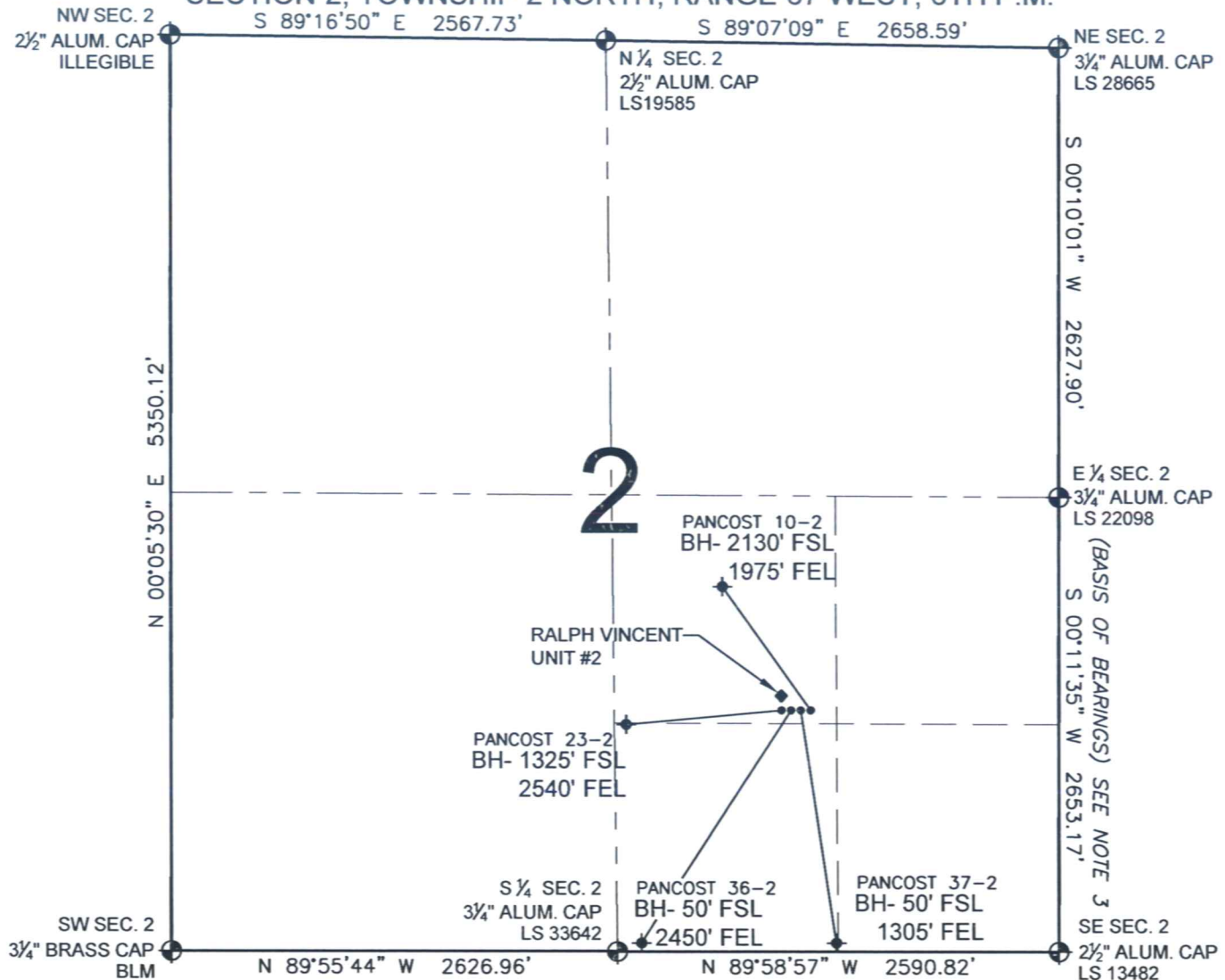


# PAD DRAWING - PANCOST 4 PAD

SECTION 2, TOWNSHIP 2 NORTH, RANGE 67 WEST, 6TH P.M.



## LEGEND

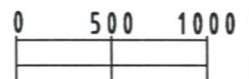
- = EXISTING MONUMENT
- ◆ = BOTTOM HOLE
- = PROPOSED WELL
- ◆ = EXISTING WELL
- BH= BOTTOM HOLE

## NOTES:

- THIS SURVEY WAS DONE BY GPS METHODS AND CONFORMS TO THE MINIMUM STANDARDS SET BY THE C.O.G.C.C., RULE NO. 215
- ELEVATIONS SHOWN AT THE WELL HEAD, AS WELL AS HORIZONTAL CONTROL, ARE BASED ON GPS-RTK VALUES DERIVED FROM DOING 2-HOUR STATIC GPS SESSIONS AND REDUCTIONS USING O.P.U.S. SOLUTIONS.  
VERTICAL = NAVD88; HORIZONTAL = NAD83/92
- THE BEARINGS SHOWN HEREON ARE BASED ON GPS OBSERVATIONS BETWEEN THE MONUMENTS SHOWN HEREON AS FOUND ON THE FIELD DATE BELOW.
- DISTANCES SHOWN ARE AT GROUND LEVEL, AS MEASURED IN THE FIELD, WITH TIES TO WELLS MEASURED AT A PERPENDICULAR TO SECTION LINES.

## NOTES:

- PANCOST 10-2 TO BE AT 1408' FSL, 1537' FEL.  
BOTTOM HOLE AT 2130' FSL & 1975' FEL.  
PANCOST 37-2 TO BE AT 1408' FSL, 1567' FEL.  
BOTTOM HOLE AT 50' FSL & 1305' FEL.  
PANCOST 36-2 TO BE AT 1408' FSL, 1597' FEL.  
BOTTOM HOLE AT 50' FSL & 2450' FEL.  
PANCOST 23-2 TO BE AT 1408' FSL, 1627' FEL.  
BOTTOM HOLE AT 1325' FSL & 2540' FEL.  
RALPH VINCENT UNIT #2 IS 1457' FSL, 1627' FEL.



SCALE: 1"=1000'

## REVISIONS

INITIAL	DATE
SMF	01-07-10
SMF	01-27-10

PREPARED BY:

**PFS**

Petroleum Field Services, LLC  
1801 W. 13th Ave.  
Denver, CO 80204



KERR-MCGEE OIL & GAS ONSHORE LP

FIELD DATE:  
12-16-09

DRAWING DATE:  
12-18-09

BY:  
SMF

PAD NAME:  
PANCOST 4 PAD

SURFACE LOCATION:

WELD COUNTY, COLORADO  
NW 1/4 SE 1/4, SEC. 2, T2N, R67W