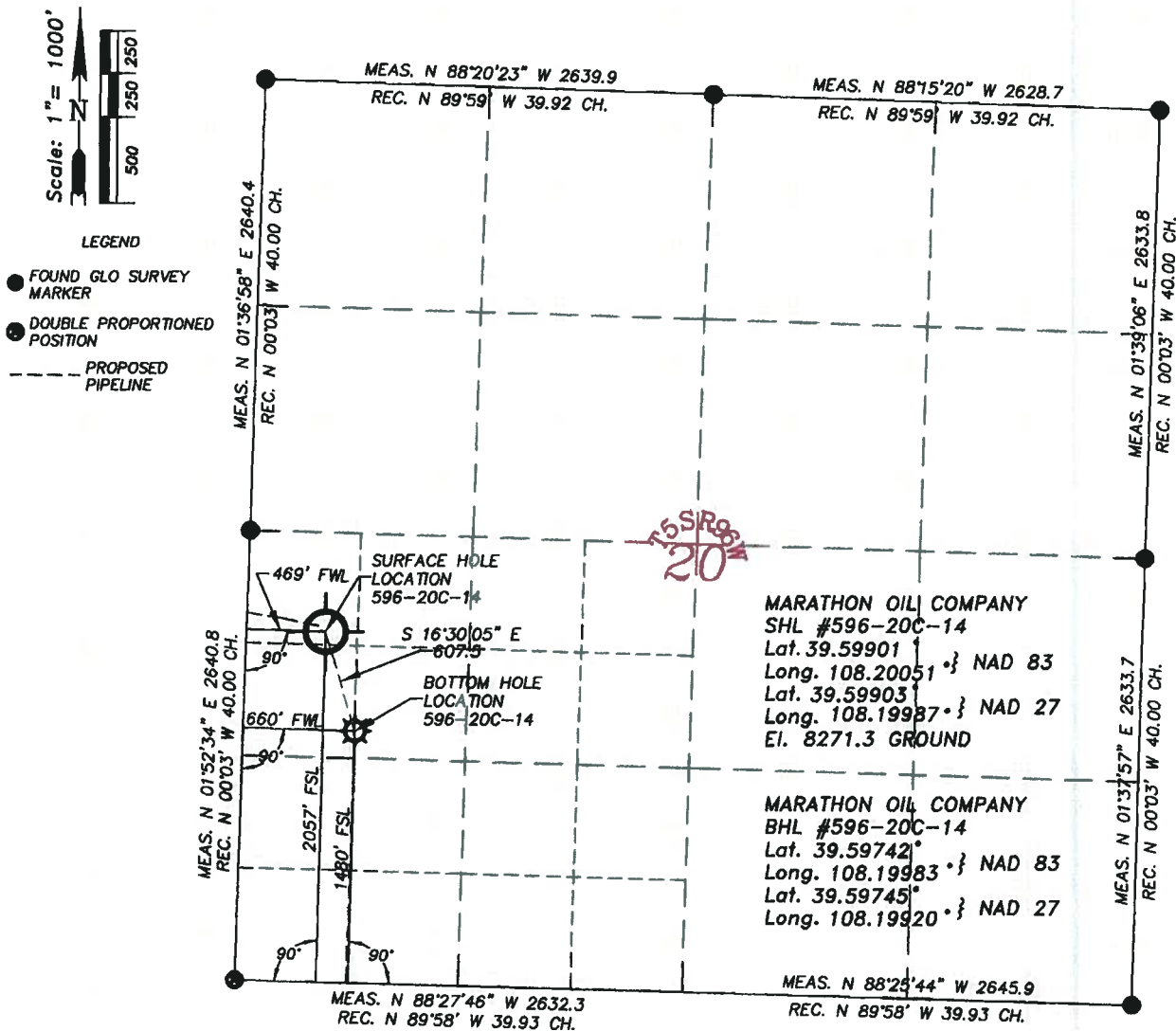


WILLIAM H. SMITH & ASSOCIATES P.C.  
SURVEYING CONSULTANTS  
T 5 S R 96 W

P.O. BOX 820  
GREEN RIVER, WYOMING 82935

550 EAST 2ND NORTH  
PH. 307-875-3638  
FAX. 307-875-3640

PLAT FOR SURFACE AND BOTTOM HOLE LOCATIONS



I, William H. Dolinar of Green River, Wyoming hereby certify that in accordance with a request from Frank Krugh for Marathon Oil Company, 5555 San Felipe, Houston, TX 77056. I and or personnel under my direction made a survey on the 23rd day of June 2008, for the Surface Hole Location and Elevation of Marathon Oil Company, Well #596-20C-14 being located within the NW/4NW/4SW/4 of Section 20, and the Bottom Hole Location being located within the S/2NW/4SW/4 of Section 20, T 5 S, R 96 W, of the 6th Principal Meridian, Garfield County, State of Colorado, as shown on the above Section Map. Surface Hole Elevation of ungraded ground = 8271.3 feet.  
Note: Basis of bearings are grid bearings based from GPS observations.  
Horizontal Datum based on Colorado State Plane Coordinate System Central Zone NAD 83.  
Vertical Datum based on NAVD 88 NGS Trilateration Station SHALE.  
NOTE: Record bearings as shown are based on the General Land Office survey, as approved on April 10, 1919.

LEICA GPS GDOP OF 3.0 ON 06/23/2008  
IMPROVEMENTS: NONE  
SURFACE USE: GRAZING: SCRUB OAK  
AND NATURAL GROUND

JOB NO. 26099  
08/04/2008 CED  
PAD 596-20C/PAD 596-20C PLATS.dwg

596-20C-14



~SEAL~