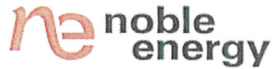


1625 Broadway
Suite 2000
Denver, CO 80202

Tel: 303.228.4000
Fax: 303.228.4280
www.nobleenergyinc.com



February 2, 2010

Colorado Oil and Gas Conservation Commission
The Chancery Building
1120 Lincoln Street, Suite 801
Denver, CO 80203

Attn: Mr. David Neslin, Director

RE: SALAZAR P20-33D
Codell/Niobrara New Drill
Township 3 North, Range 67 West, 6th P.M.
Section 20: SW/4SW/4: 571' FSL & 402' FWL (Surface Location)
Section 19: NE/4SE/4: 1350' FSL & 75' FEL (Bottom Hole Location)
Weld County, Colorado

Mr. Neslin:

Noble Energy, Inc. ("NEI") is planning to drill the captioned boundary well in accordance with the provisions of COGCC Rule 318A.e.

NEI's proposed wellbore spacing unit consists of the E/2SE/4 of Section 19 and the W/2SW/4 of Section 20, T3N, R67 W, creating a 160-acre wellbore spacing unit. NEI is the only owner within the proposed wellbore spacing unit, therefore NEI hereby attests that no notice letters are required under COGCC Rule 318A.e.(6).

Also, enclosed are copies of the following documents to assist you in your review and approval of NEI's proposed APD for the captioned well:

- Plat illustrating the proposed wellbore spacing unit and number of Codell/Niobrara wells located within the existing 160-acre governmental quarter section (SE/4) to be less than eight (8) in accordance with COGCC Rule 318A.f.
- Plat illustrating proposed wellbore spacing unit on existing location plat.

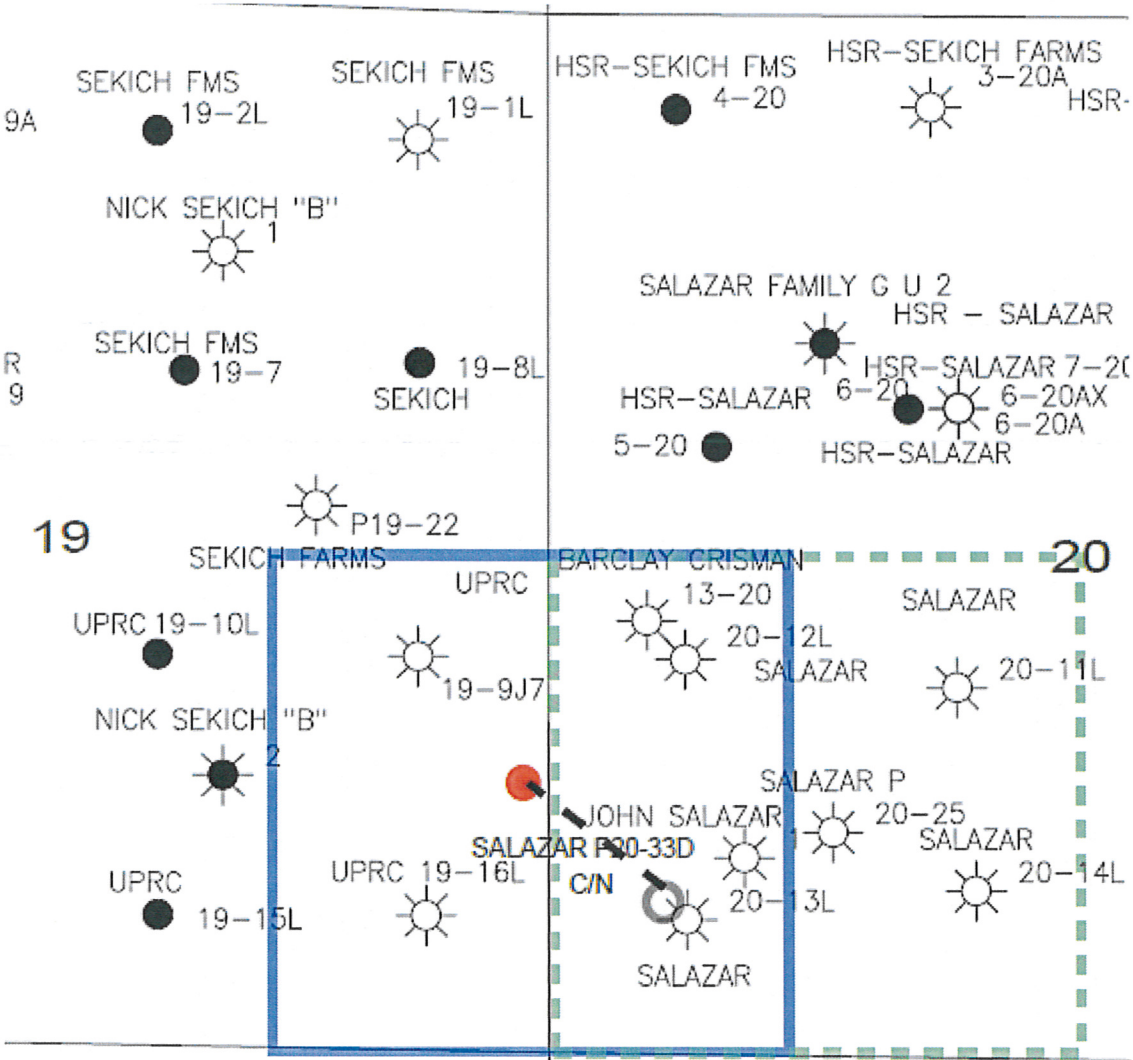
Thank you for your attention to the enclosed. NEI respectfully requests that the COGCC review the enclosed information and approve the Application for Permit to Drill the captioned well.

Sincerely,

A handwritten signature in blue ink that reads 'Mari Clark'. The signature is fluid and cursive, with the first name 'Mari' being more prominent than the last name 'Clark'.

Mari Clark
Regulatory Analyst II
Noble Energy Inc.

SALAZAR P20-33D
NESE, Section 19, T3N, R67W



LEGEND



Proposed 160 acre Spacing Unit



Bottom Hole Located NESE, Section 19, T3N, R67W

The governmental ¼ Section has less than 8 bottom hole wells producing from the Codell, Niobrara, & J-Sand Formations.

PROPOSED 318Ae SPACING UNIT

Baseline Engineering Corp. 710 11th Avenue Suite 105 Greeley, Colorado 80631

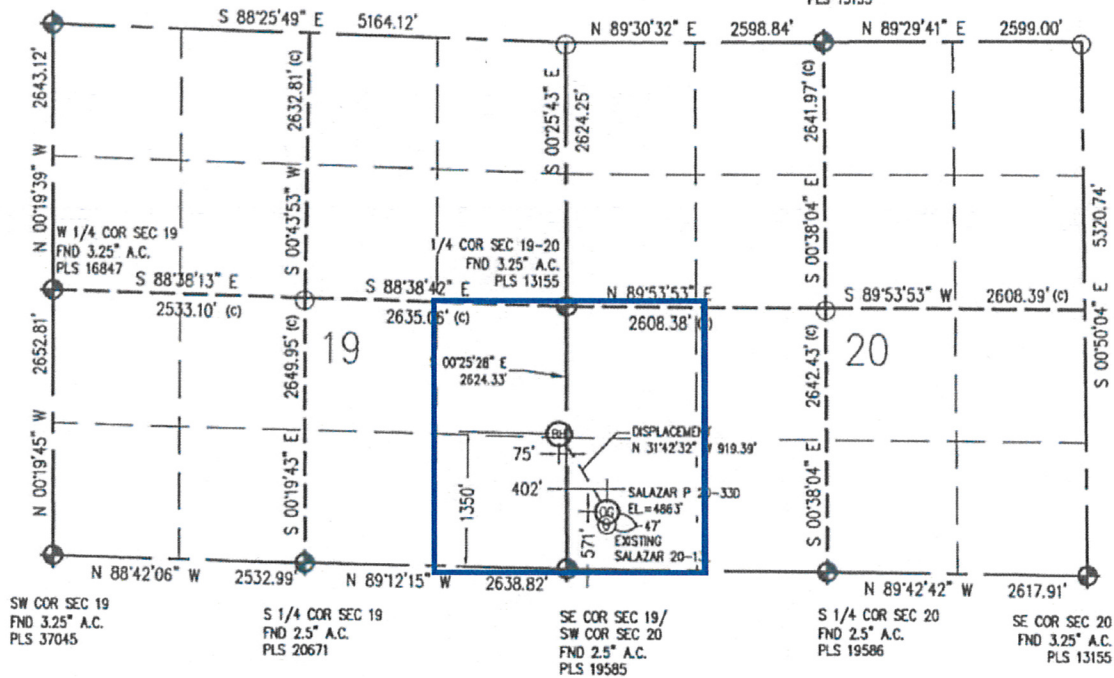
WELL LOCATION CERTIFICATE

THIS MAP DOES NOT REPRESENT A BOUNDARY SURVEY

SECTION 19 & 20
TOWNSHIP 3 NORTH
RANGE 67 WEST

NW COR SEC 19
FND 2.5" A.C.
PLS 16847

N 1/4 COR SEC 20
FND 3.25" A.C.
PLS 13155



IN ACCORDANCE WITH A REQUEST FROM MATT CAMPBELL - NOBLE ENERGY INC, BASELINE ENGINEERING CORP. HAS DETERMINED THE LOCATION OF THE SALAZAR P 20-330 TO BE 571' FSL, 402' FWL, AS MEASURED AT NINETY (90) DEGREES FROM THE SECTION LINE OF SECTION 20, TOWNSHIP 3 NORTH, RANGE 67 WEST AND THE BOTTOM HOLE LOCATION TO BE 75' FEL AND 1350' FSL OF SECTION 19, TOWNSHIP 3 NORTH, RANGE 67 WEST, 6TH PRINCIPAL MERIDIAN, WELD COUNTY, COLORADO.

I HEREBY CERTIFY THAT THIS WELL LOCATION CERTIFICATE WAS PREPARED BY ME, OR UNDER MY DIRECT SUPERVISION, THAT THE FIELD WORK WAS COMPLETED ON 9/25/2009, THAT IT IS NOT A LAND SURVEY PLAT OR AN IMPROVEMENT SURVEY PLAT, AND THAT IT IS NOT TO BE RELIED UPON FOR ESTABLISHMENT OF FENCE, BUILDING, OR OTHER FUTURE IMPROVEMENT LINES.

NOTES:

- 1) LAT/LONG SHOWN ARE BASED ON A GPS OBSERVATION (NAD83).
- 2) BEARINGS SHOWN ARE GRID BEARINGS OF THE COLORADO STATE PLANE COORDINATE SYSTEM, NORTH ZONE, NORTH AMERICAN DATUM 1983/2007.
- 3) GROUND ELEVATIONS ARE BASED ON A GPS OBSERVATION (NAVD 88 DATUM).
- 4) ALL DISTANCES SHOWN ARE FIELD MEASURED UNLESS OTHERWISE NOTED.
- 5) THE NEAREST EXISTING WELL IS: SALAZAR 20-13L 47' SOUTH.
- 6) IMPROVEMENTS: SEE VISIBLE IMPROVEMENTS EXHIBIT FOR ALL VISIBLE IMPROVEMENTS WITHIN 400' OF WELL HEAD.
- 7) SURFACE USE: PASTURE.

NOTICE: According to Colorado law you MUST commence any legal action based upon any defect in this W.L.C. within three years after you first discover such defect. In no event may any action based upon any defect in this W.L.C. be commenced more than ten years from this said date of the certification shown herein.

LATITUDE & LONGITUDE (NAD 83 SURFACE HOLE):

LATITUDE: N 40.205775°
LONGITUDE: W 104.921826°
PDOP: 1.3

1/4, 1/4: SW1/4SW1/4
NEAREST PROPERTY LINE: 220' SW

BOTTOM HOLE:
LATITUDE: N 40.207930°
LONGITUDE: W 104.923537°

LEGEND

- - FOUND/SET SURVEY MONUMENT PER MONUMENT RECORD EXCEPTS NOTED.
- - CALCULATED SURVEY MONUMENT POSITION
- (C) - CALCULATED DIMENSION



John C. Berickman
Professional Land Surveyor Registration No. 28258
State of Colorado
FOR AND ON BEHALF OF BASELINE ENGINEERING CORP.

Completed
11/9/2009
JOB # B003190/1102-02