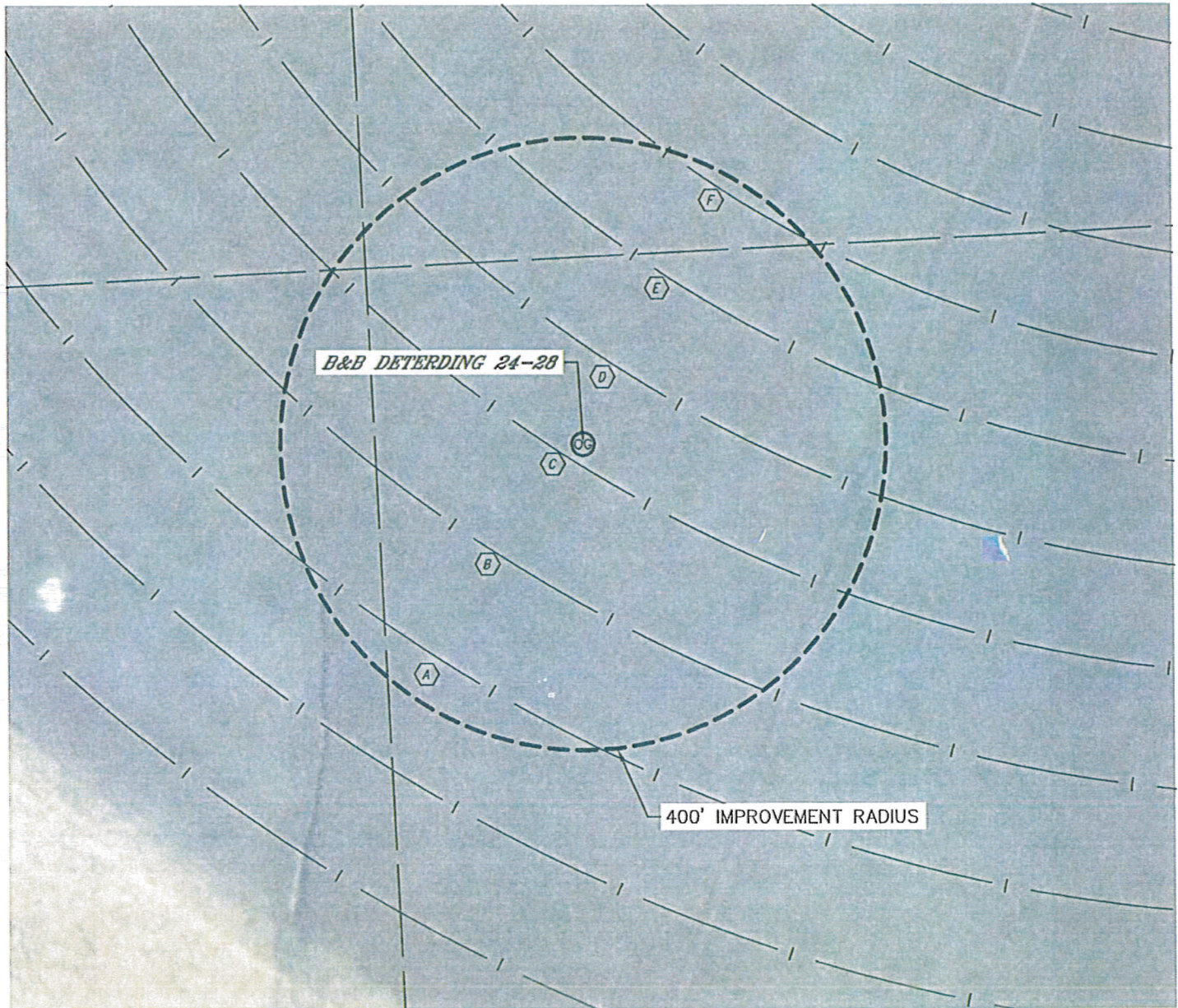


LOCATION DRAWING

SECTION: 28
TOWNSHIP: 1S
RANGE: 44W



IMPROVEMENTS:

- (A) PIVOT TRACK 339' SOUTHWEST
- (B) PIVOT TRACK 182' SOUTHWEST
- (C) PIVOT TRACK 25' SOUTHWEST
- (D) PIVOT TRACK 109' NORTHEAST
- (E) PIVOT TRACK 244' NORTHEAST
- (F) PIVOT TRACK 379' NORTHEAST

