

BRAN-DEX

GAMMA RAY-C.C.L.
CEMENT BOND-V.D.L.

WIRELINE SERVICES

Company ENCANA ENERGY RESOURCES			
Well IONE#42-2			
Field WATTENBERG			
County WELD			
State COLORADO			
Location:		API # : 05-123-21837-00	
2146FNL&468FEL SE NE		Other Services	
SEC 2	TWP 2N	RGE 65W	Elevation
Permanent Datum	G.L.		K.B. 5081
Log Measured From	K.B.	Elevation	D.F. 5080
Drilling Measured From	K.B.		G.L. 5069
Date	NOV-8-2004		
Run Number	ONE		
Depth Driller	8104		
Depth Logger	8066		
Bottom Logged Interval	8060		
Top Log Interval	6360		
Open Hole Size			
Type Fluid			
Density / Viscosity			
Max. Recorded Temp.	233		
Estimated Cement Top			
Time Well Ready			
Time Logger on Bottom			
Equipment Number	#12		
Location	STERLING		
Recorded By	GARDNER		
Witnessed By	BRAD BOEHM		
Borehole Record		Tubing Record	
Run Number	Bit	From	To
		Size	Weight
		From	To
Casing Record	Size	Wt/Ft	Top
Surface String			Bottom
Pilot String			
Production String	4 1/2		
Line1			

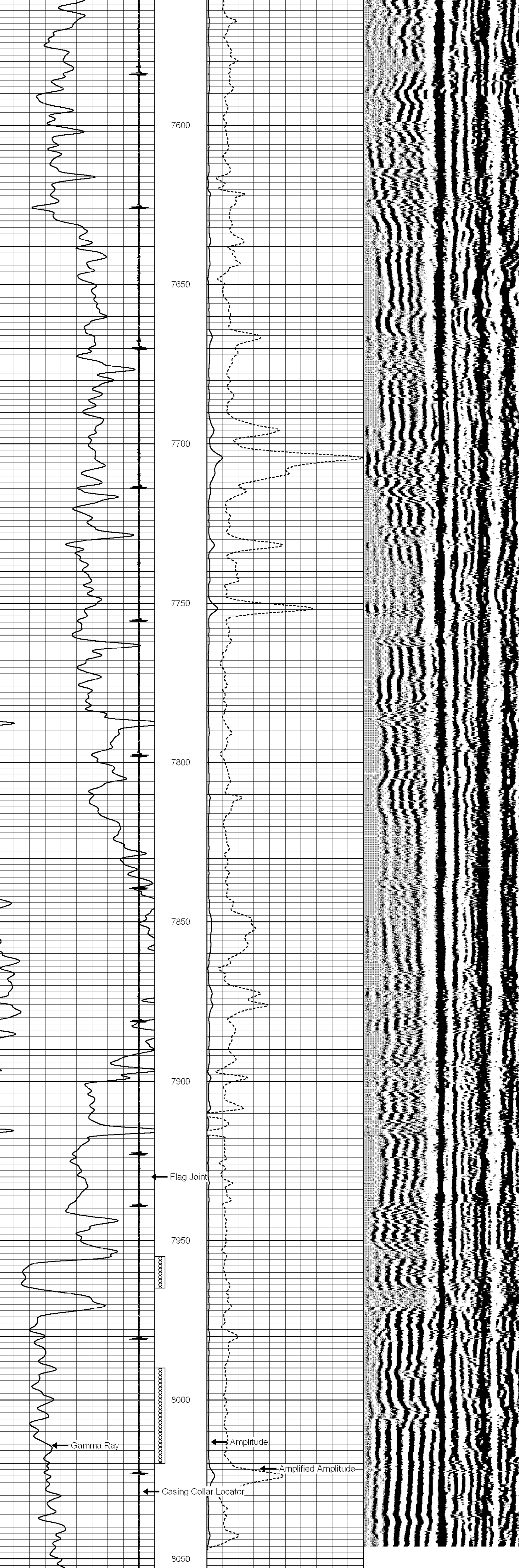
<<< Fold Here >>>

All interpretations are opinions based on inferences from electrical or other measurements and we cannot and do not guarantee the accuracy or correctness of any interpretation, and we shall not, except in the case of gross or willful negligence on our part, be liable or responsible for any loss, costs, damages, or expenses incurred or sustained by anyone resulting from any interpretation made by any of our officers, agents or employees. These interpretations are also subject to our general terms and conditions set out in our current Price Schedule.

Comments

Database File: ione.db
Dataset Pathname: pass4
Presentation Format: cbl35
Dataset Creation: Mon Nov 08 14:06:47 2004 by Log Warrior 7.0 Standar
Charted by: Depth in Feet scaled 1:240

9	Collar Locator	-1	0	Amplified Amplitude (mV)	10	300	Variable Density	1200
0	Gamma Ray	300	0	Amplitude (mV)	100			



9	Collar Locator	-1	0	Amplified Amplitude (mV)	10	300	Variable Density	1200
0	Gamma Ray	300	0	Amplitude (mV)	100			