



**SUPERIOR**  
Black Lick, Pa.  
Mercer, Pa.  
Wooster, Oh.  
Cleveland, Ok.  
Trinidad, Co.

## DUAL INDUCTION LOG

Company XTO Energy Inc.  
Well Golden Eagle 30-03  
Field Purgatoire River  
County Las Animas State Colorado

Location: API # : 05 071 09347 00

1281' FNL & 2711' FWL

SEC 30 TWP 33S RGE 67W

Permanent Datum Ground Level Elevation 7250'  
Log Measured From Ground Level  
Drilling Measured From Ground Level

Other Services  
CDL  
NEUTRON  
Elevation  
K.B. -----  
D.F. -----  
G.L. 7250'

Date	8-01-07		
Run Number	One		
Depth Driller	1900'		
Depth Logger	1894'		
Bottom Logged Interval	1892'		
Top Log Interval	Surface Casing		
Casing Driller	8 5/8" @ 496'		
Casing Logger	496'		
Bit Size	7 7/8"		
Type Fluid in Hole	Water		
Density / Viscosity	///		
pH / Fluid Loss	///		
Source of Sample	///		
Rm @ Meas. Temp	///		
Rmf @ Meas. Temp	///		
Rmc @ Meas. Temp	///		
Source of Rmf / Rmc	///		
Rm @ BHT	///		
Time Circulation Stopped	3:30 P.M.		
Time Logger on Bottom	5:00 P.M.		
Maximum Recorded Temperature	95 DEG F		
Equipment Number	T697		
Location	Trinidad		
Recorded By	M. Norton		
Witnessed By	Mr. Don Johnson		

<<< Fold Here >>>

All interpretations are opinions based on inferences from electrical or other measurements and we cannot and do not guarantee the accuracy or correctness of any interpretation, and we shall not, except in the case of gross or willful negligence on our part, be liable or responsible for any loss, costs, damages, or expenses incurred or sustained by anyone resulting from any interpretation made by any of our officers, agents or employees. These interpretations are also subject to our general terms and conditions set out in our current Price Schedule.

### Comments

Well Directions:  
Second Bosque entrance four miles after Weston,  
right on Apache Canyon, third drive thru location.



**SUPERIOR**

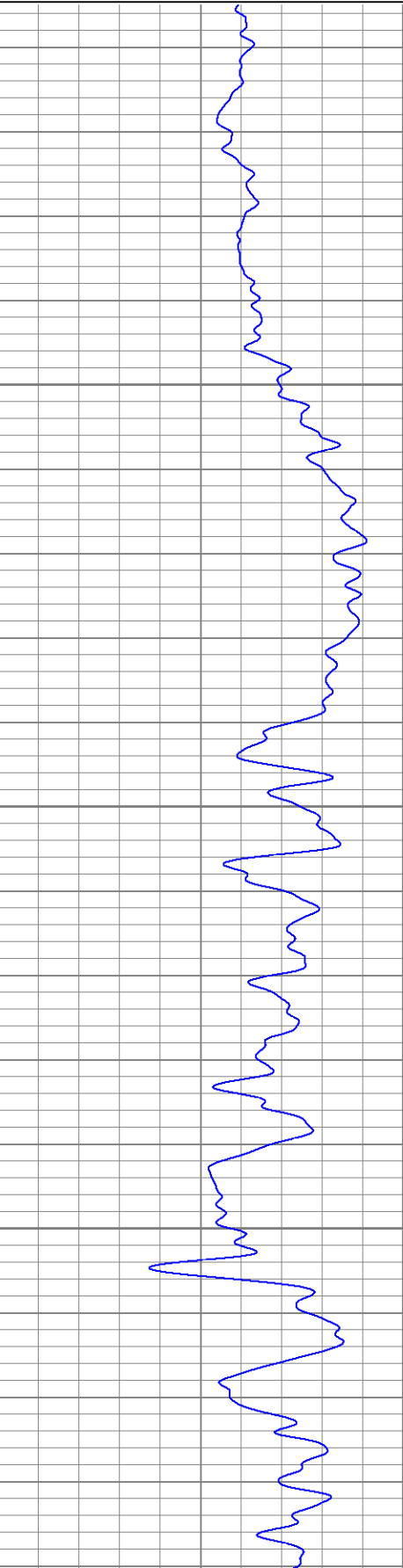
Black Lick, Pa.  
Mercer, Pa.  
Wooster, Oh.  
Cleveland, Ok.  
Trinidad, Co.

# Main Pass

Database File: xtoge3003.db  
Dataset Pathname: pass2.1  
Presentation Format: dil  
Dataset Creation: Wed Aug 01 18:14:12 2007 by Calc Open-Cased 061129  
Charted by: Depth in Feet scaled 1:240

0	GR (GAPI)	200
-100	SP (mV)	100

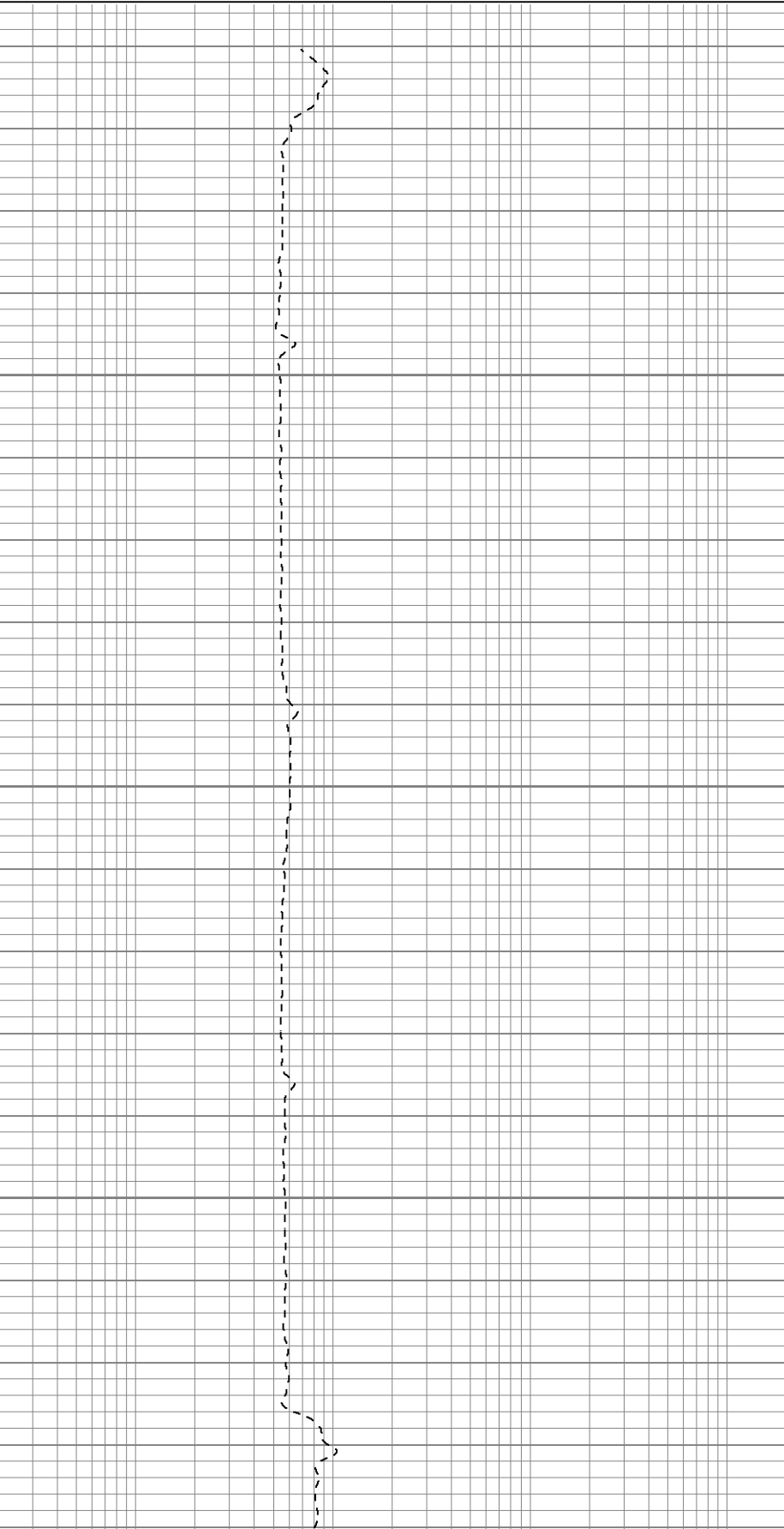
0.2	RILM (Ohm-m)	2000
0.2	RILD (Ohm-m)	2000
0.2	RLL3 (Ohm-m)	2000

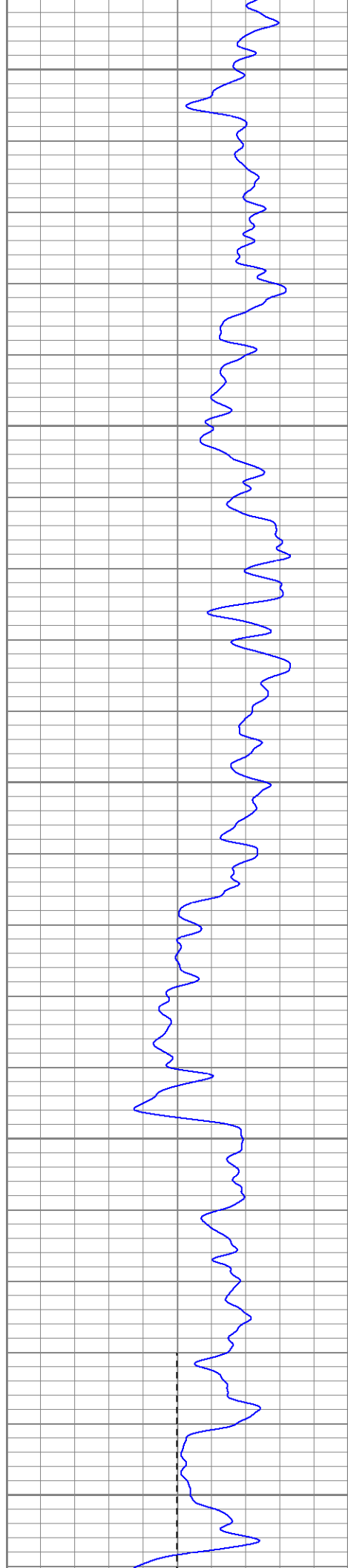


50

100

150





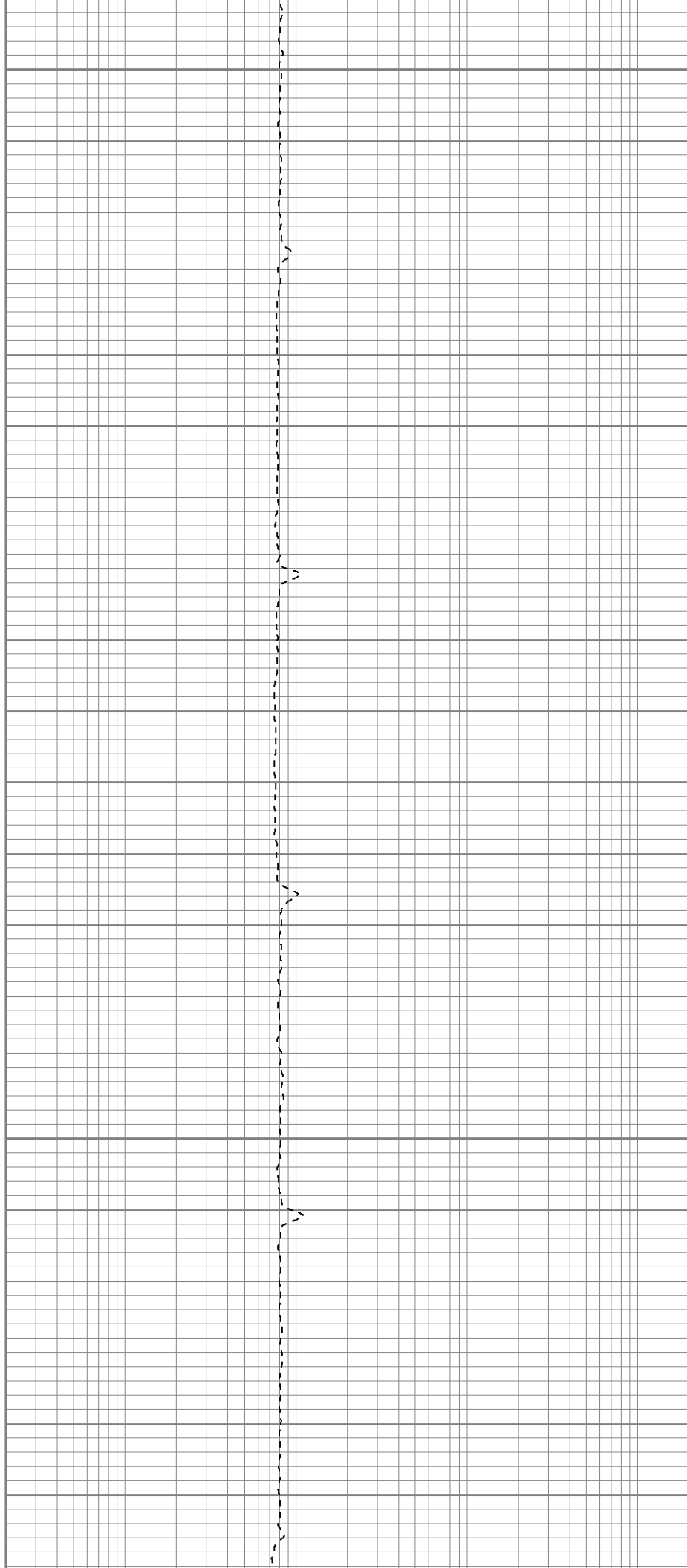
200

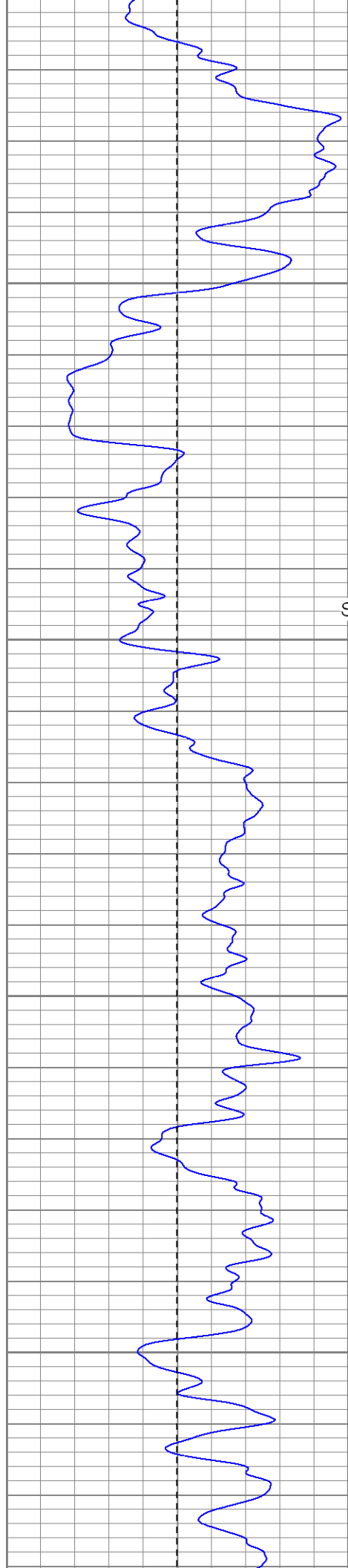
250

300

350

400





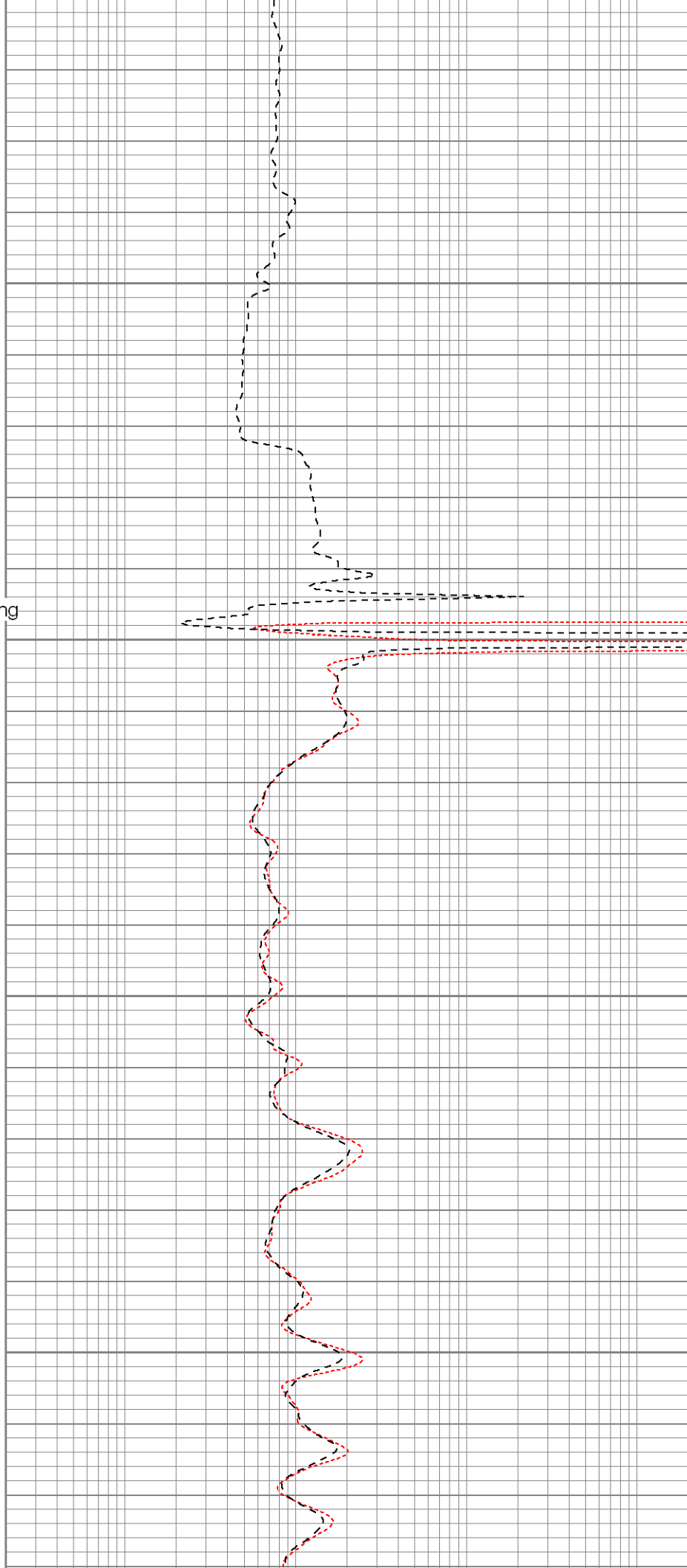
450

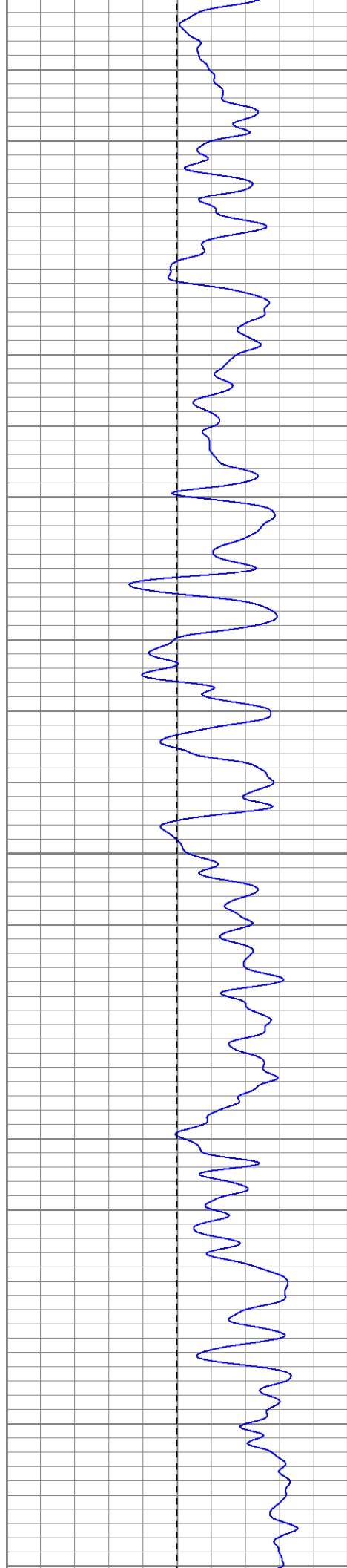
Surface Casing

500

550

600





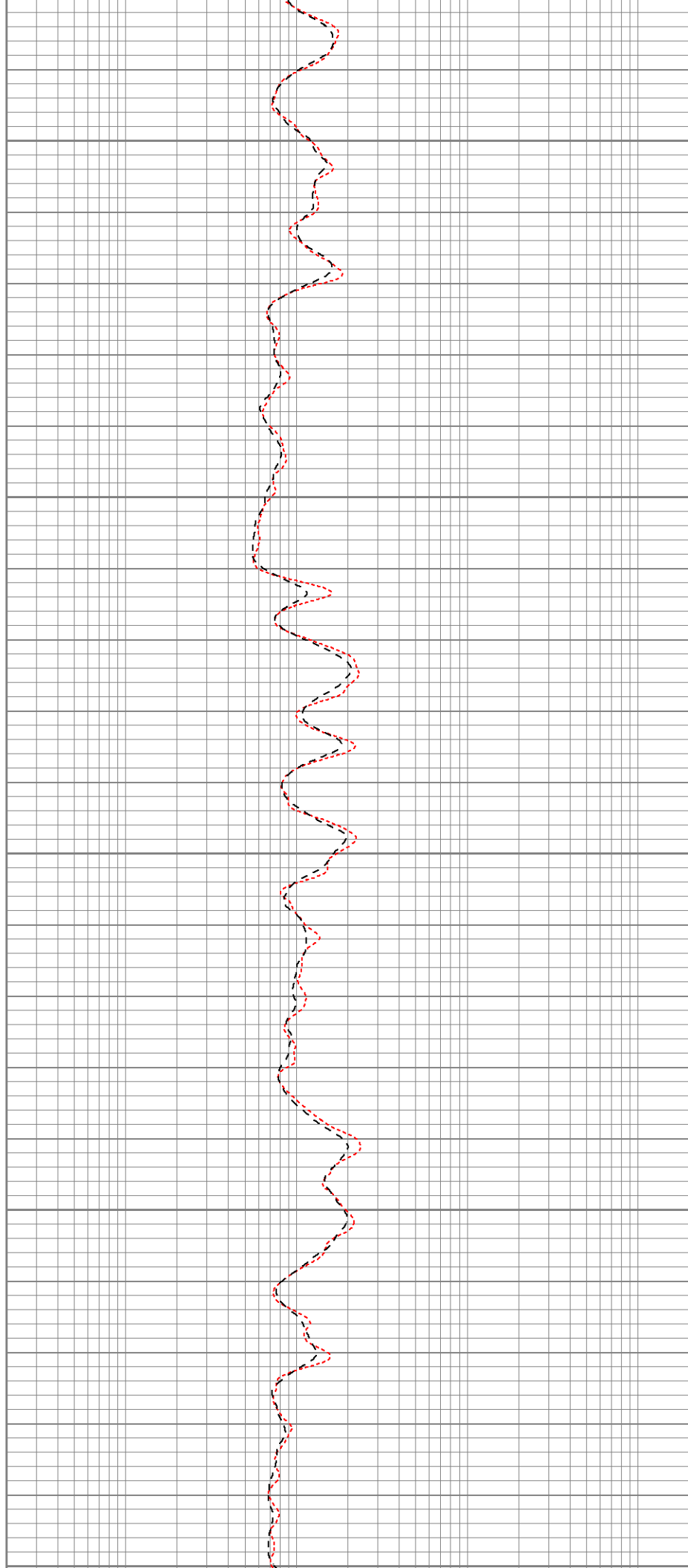
650

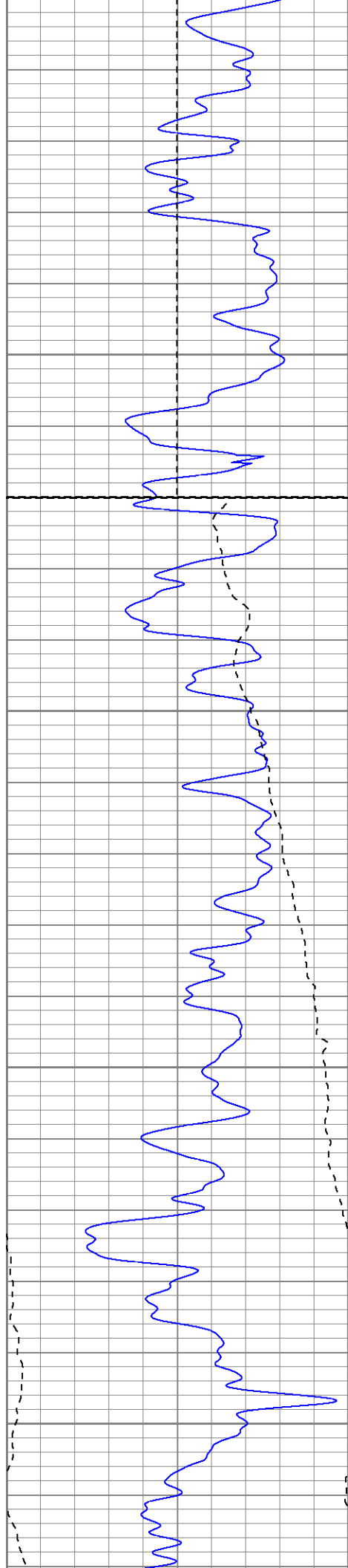
700

750

800

850





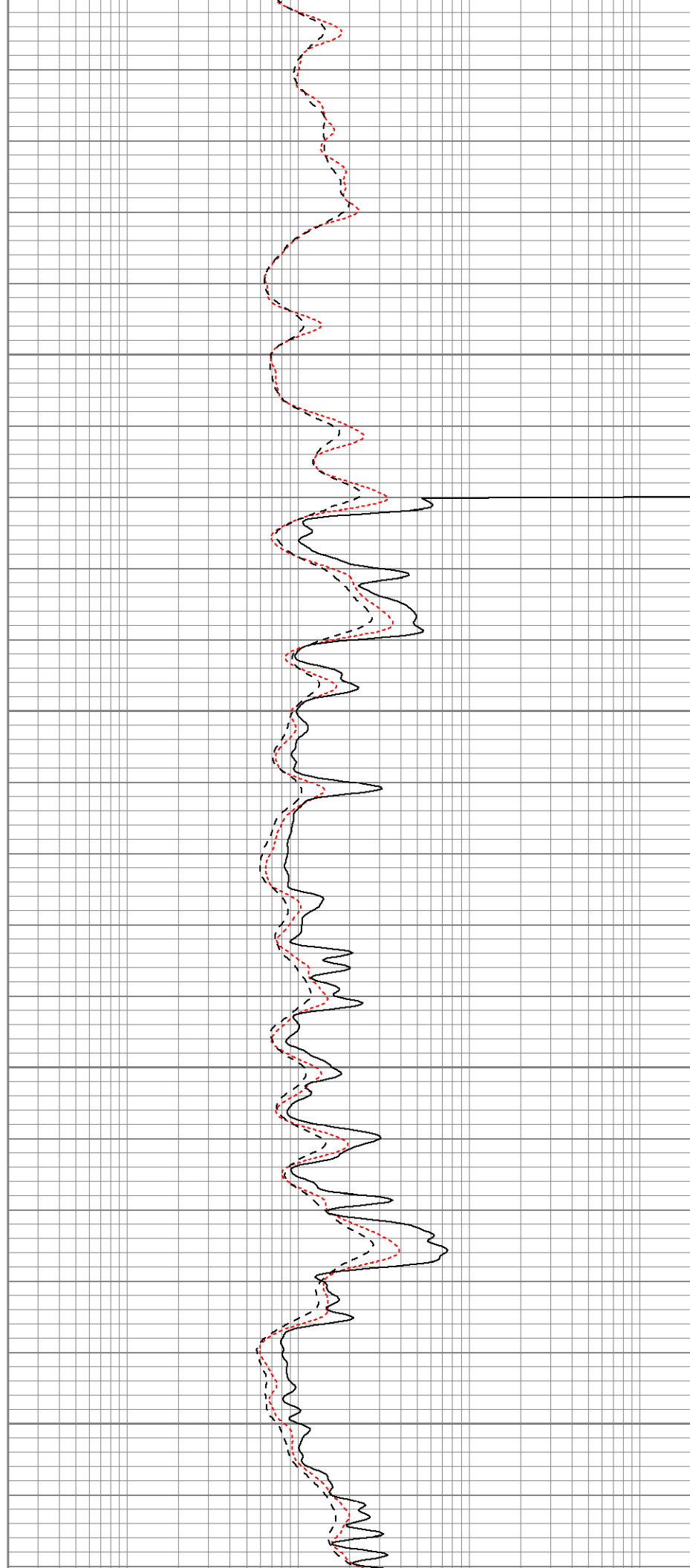
Fluid Level

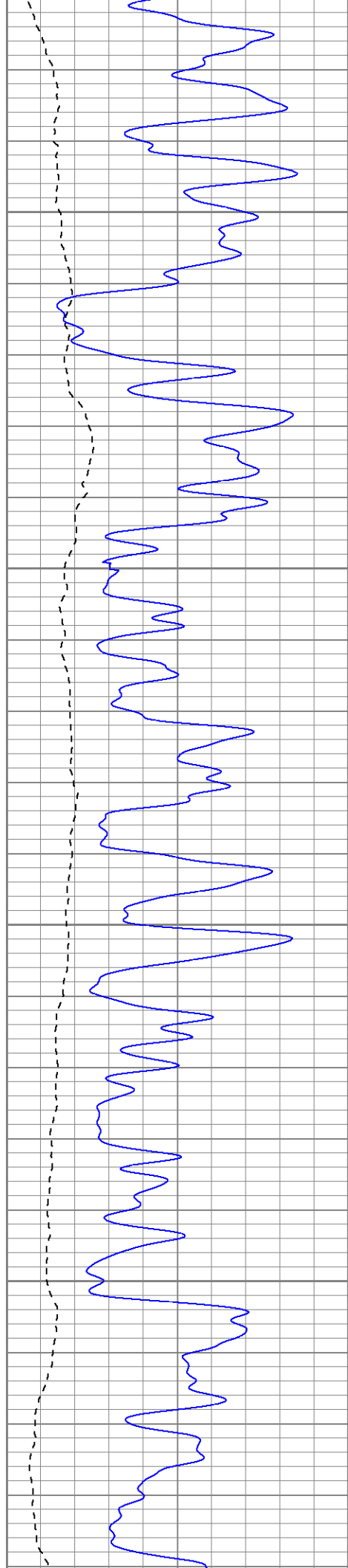
900

950

1000

1050



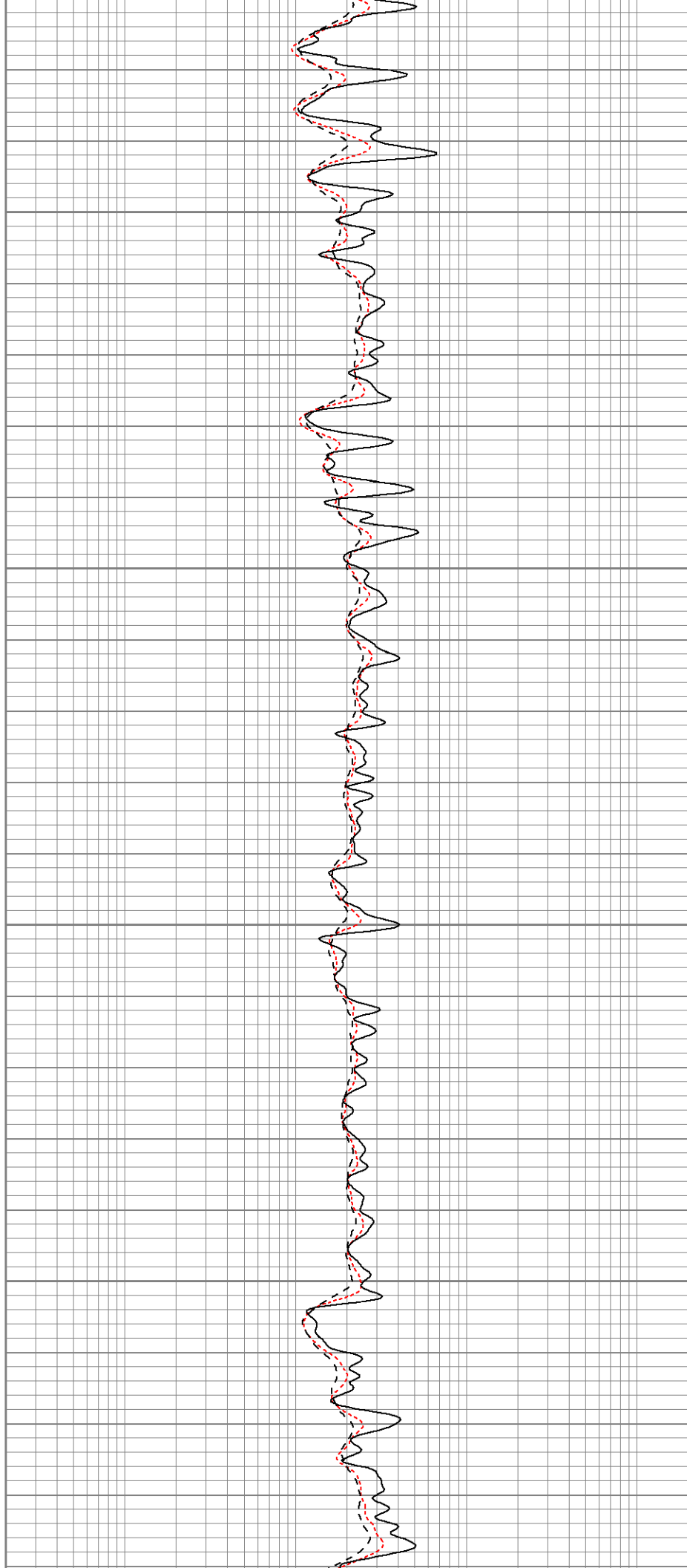


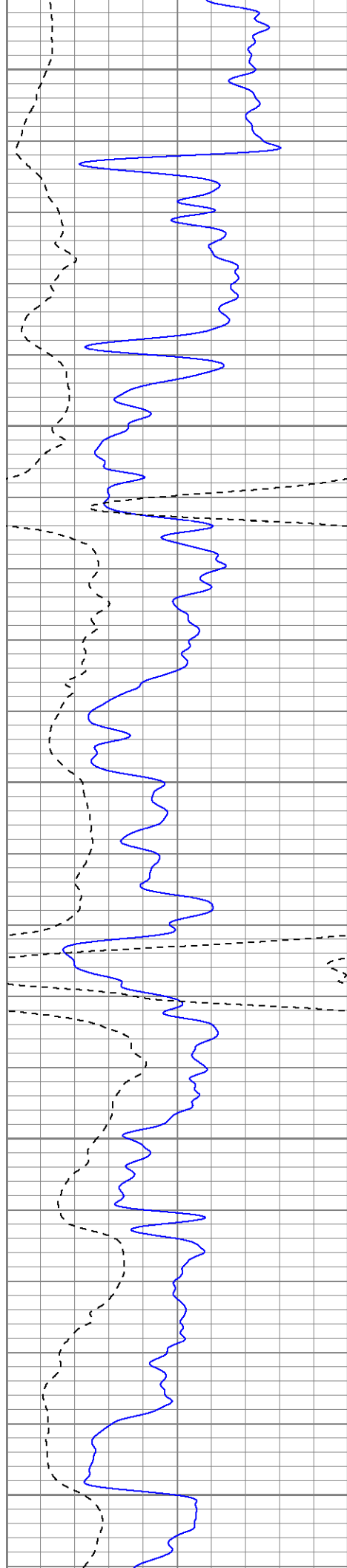
1100

1150

1200

1250





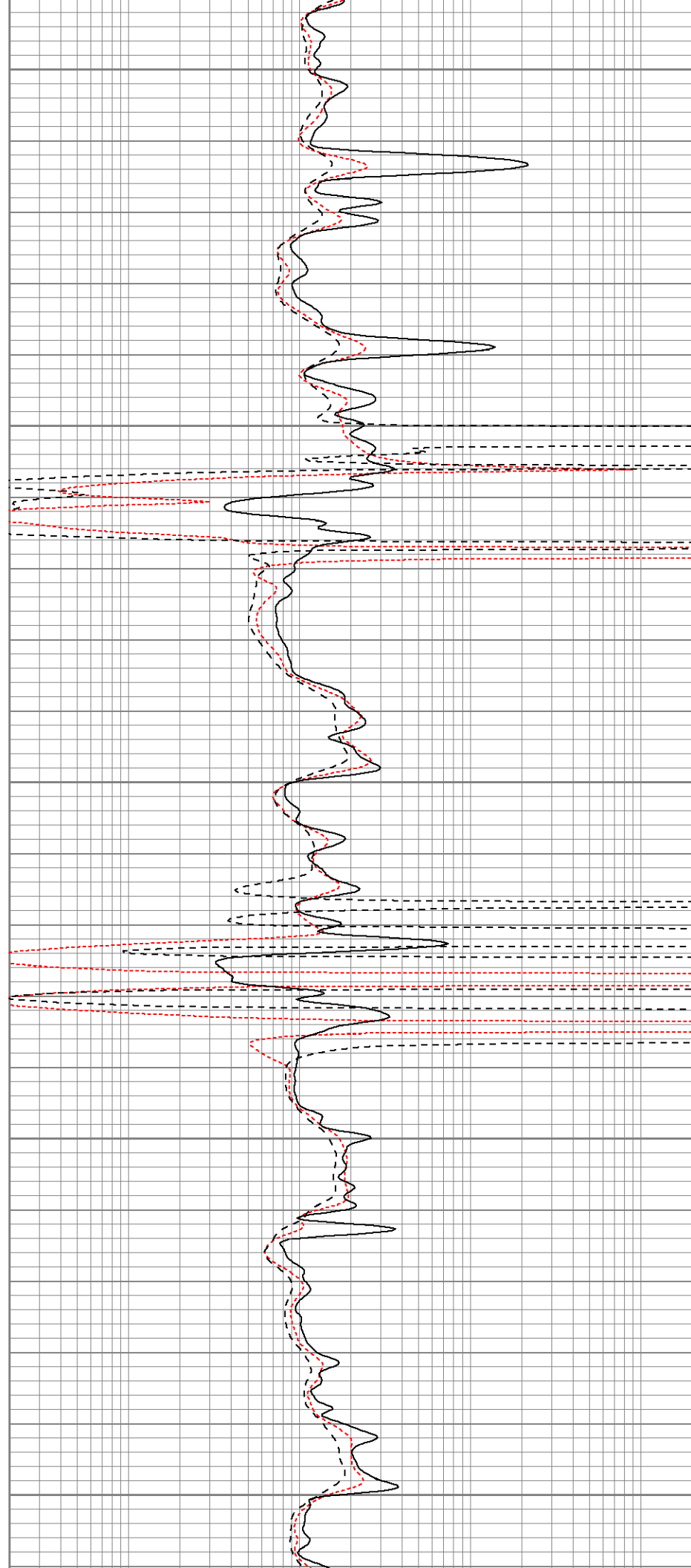
1300

1350

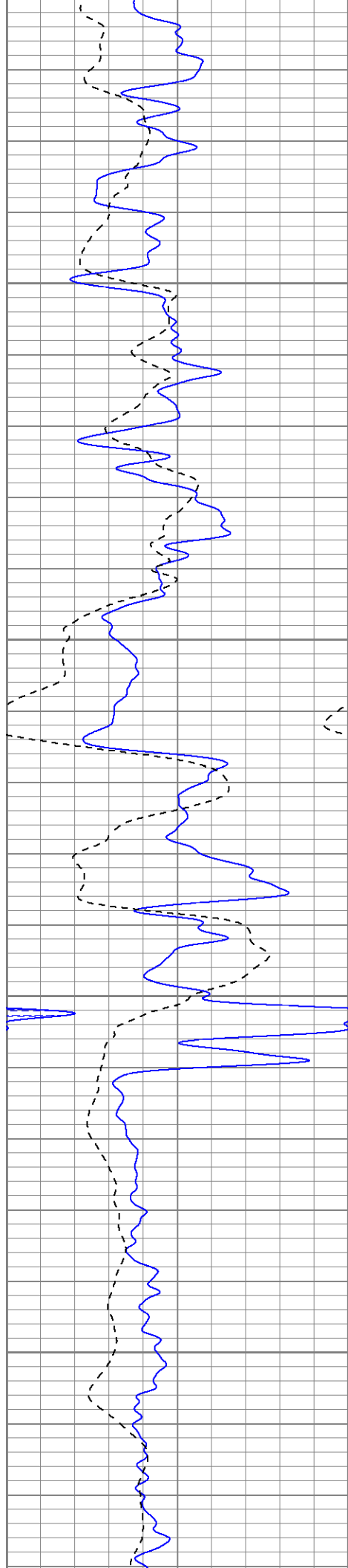
1400

1450

1500





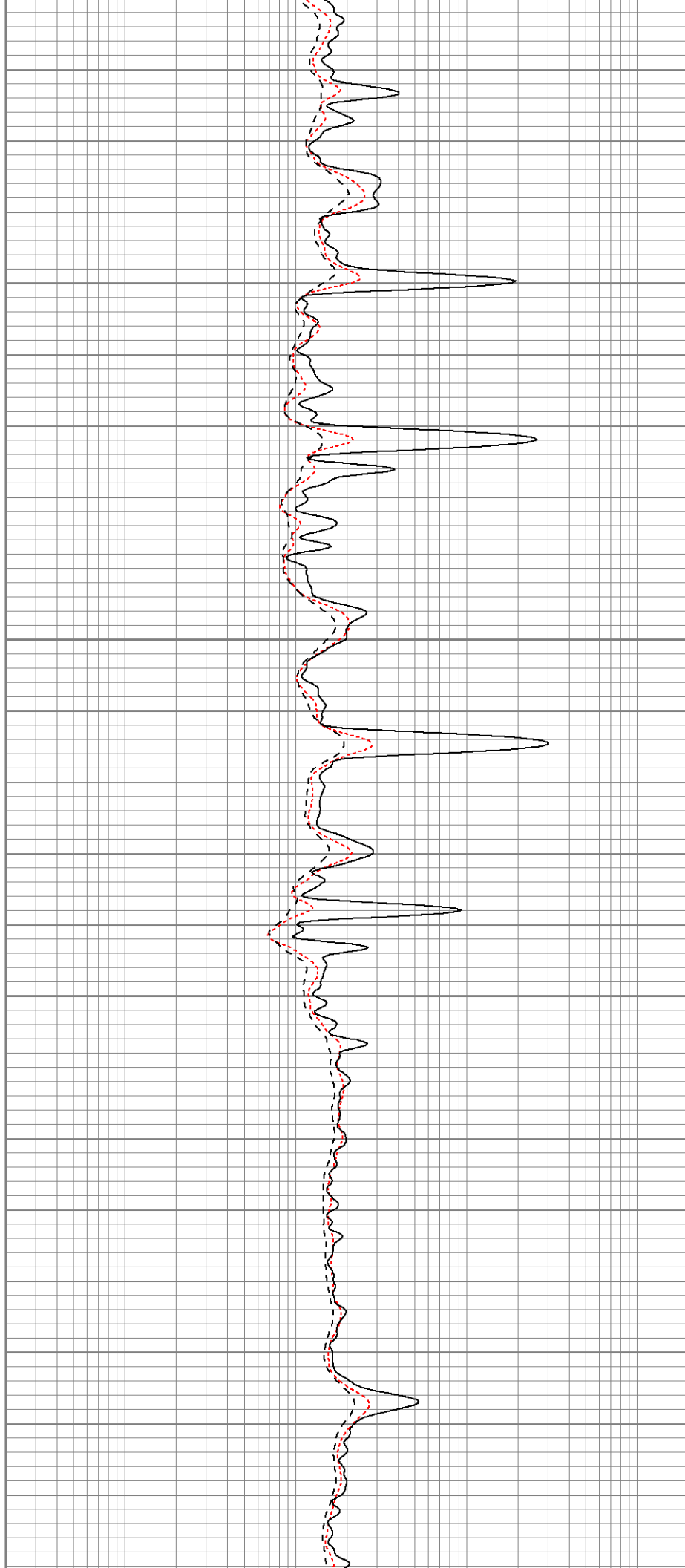


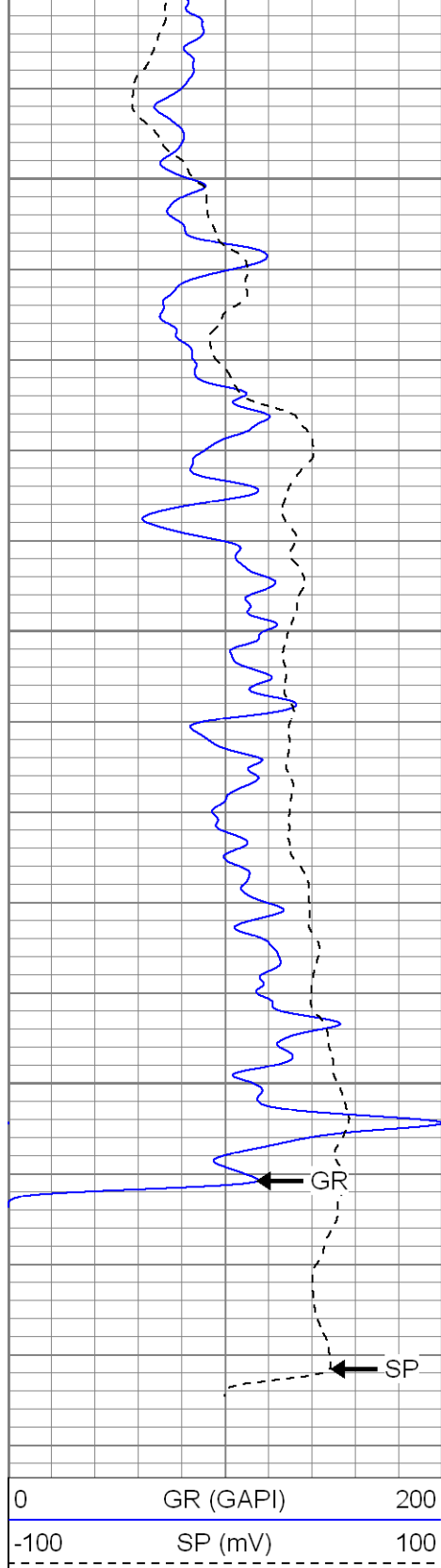
1550

1600

1650

1700

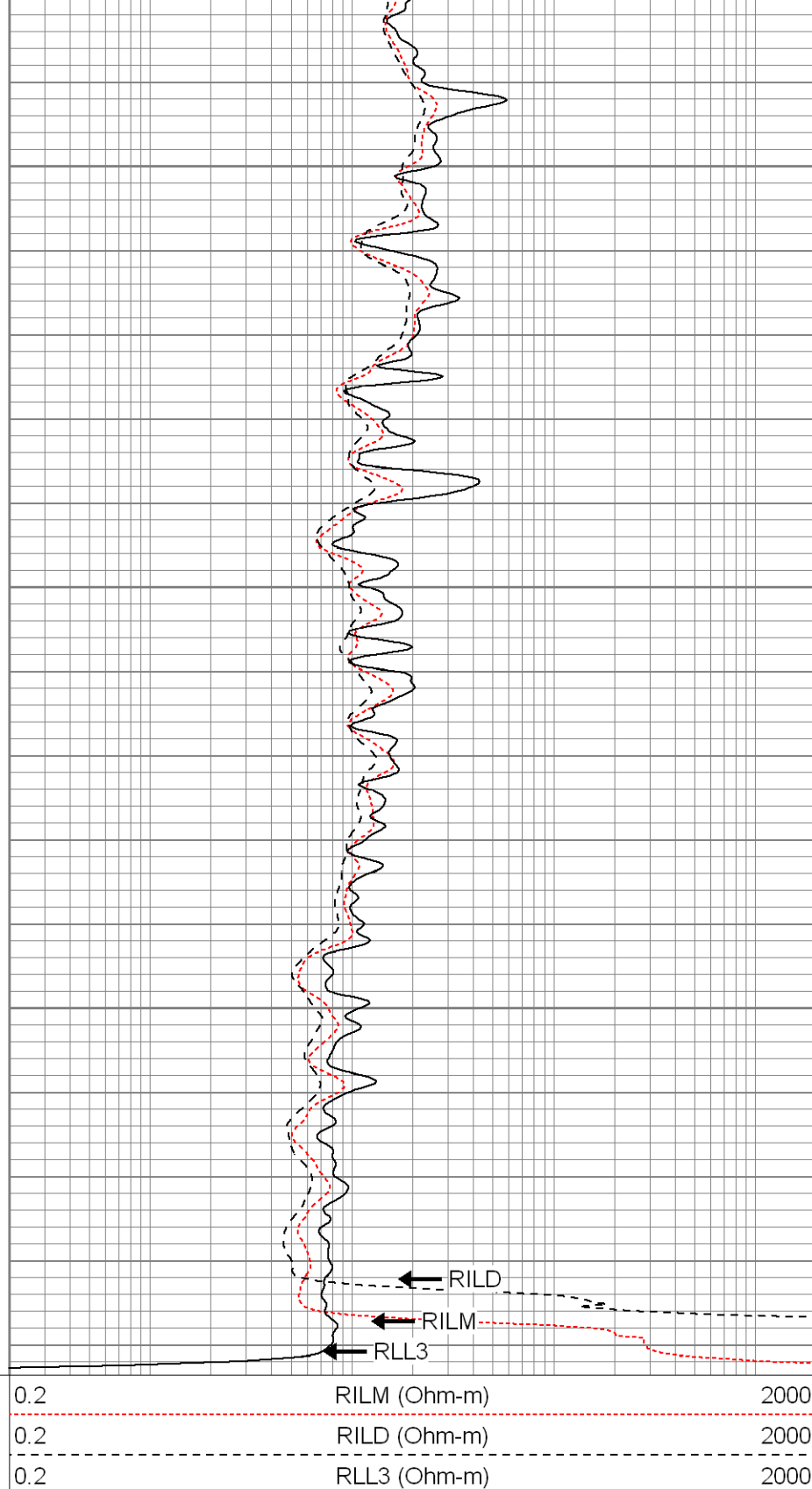




1750

1800

1850



**SUPERIOR**

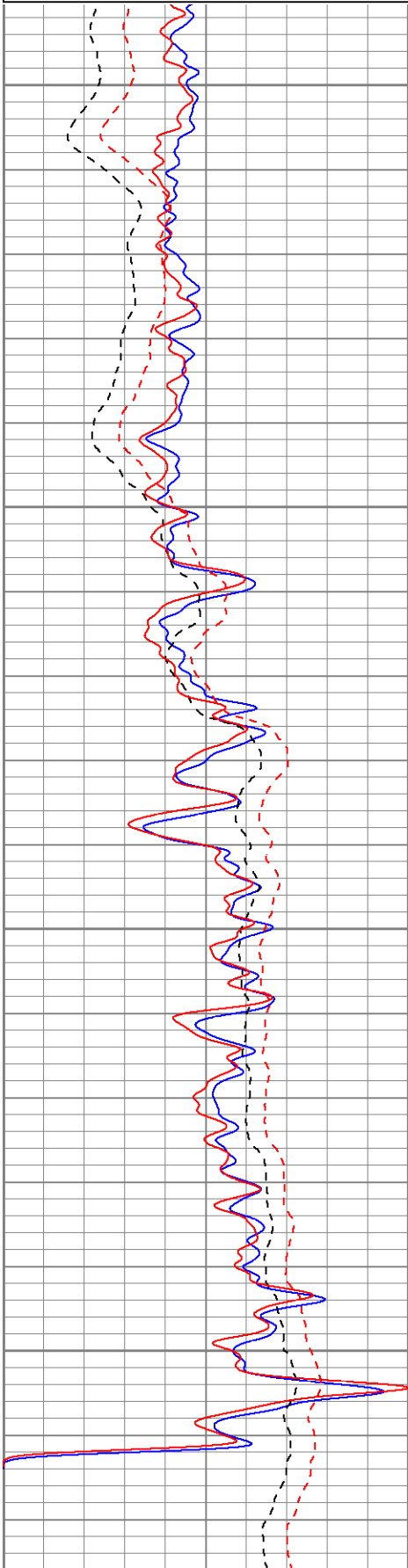
Black Lick, Pa.  
Meroer, Pa.  
Wooster, Oh.  
Cleveland, Ok.  
Trinidad, Co.

# Repeat Section

Database File: xtoge3003.db  
 Dataset Pathname: pass1.1  
 Presentation Format: dil  
 Dataset Creation: Wed Aug 01 18:13:31 2007 by Calc Open-Cased 061129  
 Charted by: Depth in Feet scaled 1:240

0	GR (GAPI)	200
-100	SP (mV)	100
0	GR-repeat (GAPI)	200
-100	SP-repeat (mV)	100

0.2	RILM (Ohm-m)	2000
0.2	RILD (Ohm-m)	2000
0.2	RLL3 (Ohm-m)	2000
0.2	RLL3-repeat (Ohm-m)	2000
0.2	RILM-repeat (Ohm-m)	2000
0.2	RILD-repeat (Ohm-m)	2000

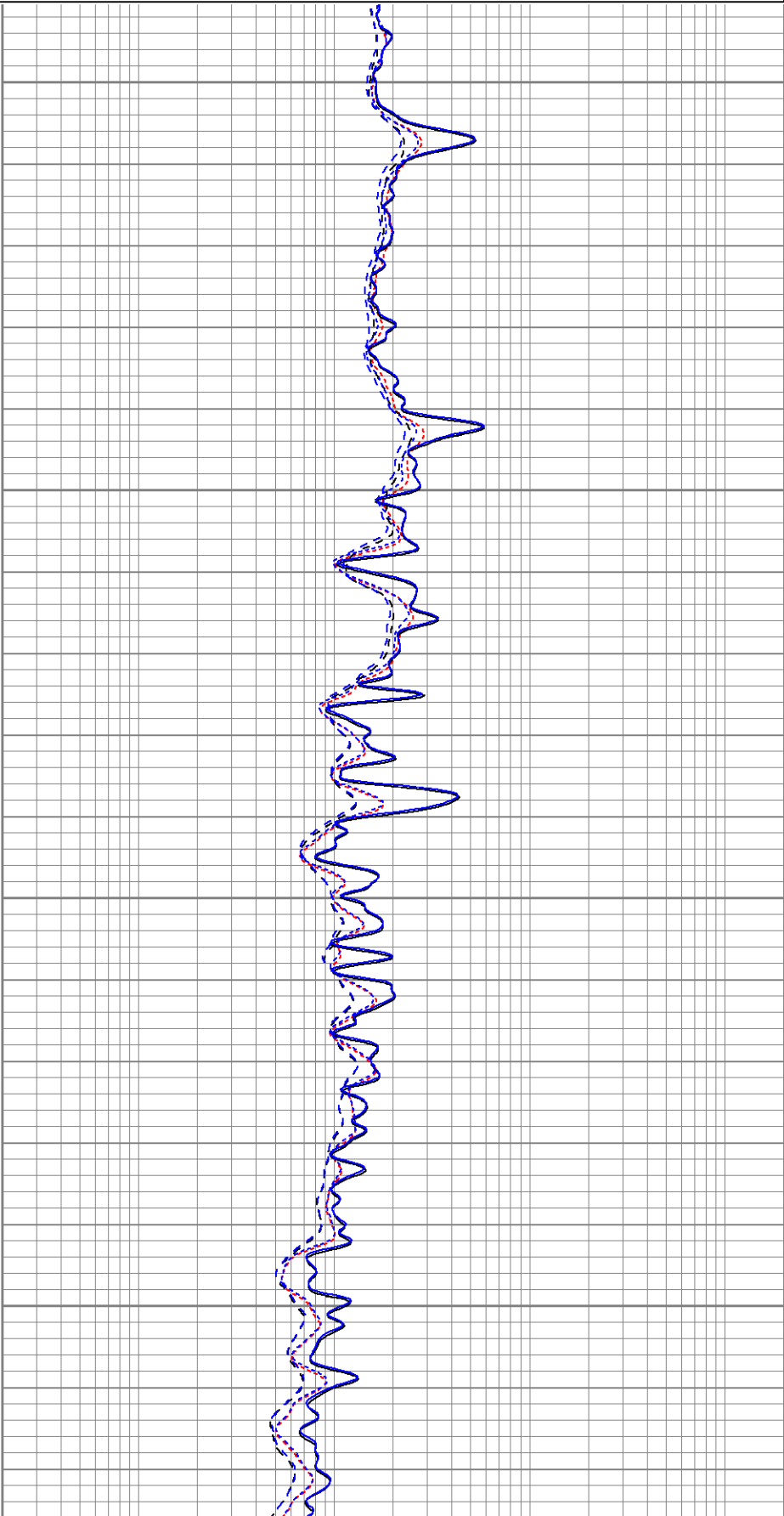


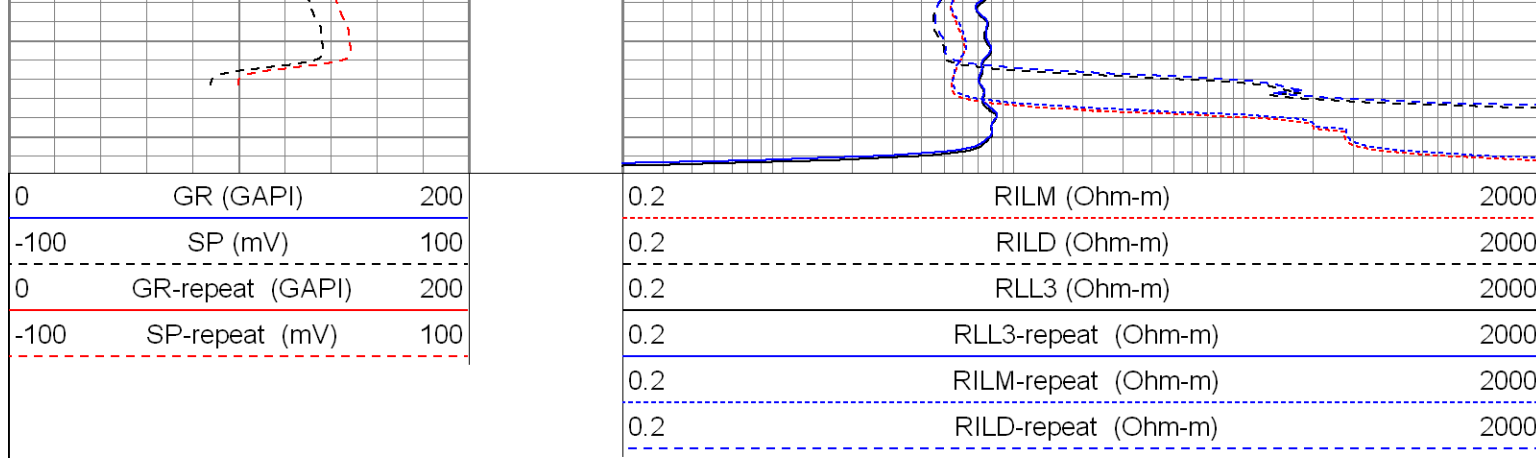
1700

1750

1800

1850





**Calibration Report**

Database File: xtoge3003.db  
 Dataset Pathname: pass2  
 Dataset Creation: Wed Aug 01 17:14:35 2007 by Log Open-Cased 061129

**Dual Induction Calibration Report**

Serial-Model: 5375-G  
 Surface Cal Performed: Wed Aug 01 17:12:11 2007  
 Downhole Cal Performed: Thu Jul 05 11:35:16 2007

Surface Calibration									
Readings				References			Results		
Loop:	Air	Loop		Air	Loop		m	b	
Deep	0.001	0.620	V	0.000	500.000	mmho-m	807.659	-1.119	
Medium	0.005	0.743	V	0.000	550.000	mmho-m	744.727	-3.505	
Internal:	Zero	Cal		Zero	Cal		m	b	
Deep	0.001	0.620	V	0.000	500.000	mmho-m	807.698	-1.159	
Medium	0.005	0.743	V	0.000	550.000	mmho-m	744.801	-3.569	

Downhole Calibration								
Internal:	Readings			References			Results	
	Zero	Cal		Zero	Cal		m	b
Deep	0.123	499.901	mmho-m	0.039	500.015	mmho-m	1.000	-0.084
Medium	0.245	549.982	mmho-m	0.064	550.009	mmho-m	1.000	-0.182
Shallow	2.506	0.009	V	500.000	2.000	Ohm-m	105.000	0.000

**Compensated Density Calibration Report**

Serial-Model: 2118-poillex  
 Source / Verifier: /  
 Master Calibration Performed: Wed Jul 11 09:42:26 2007

Master Calibration					
	Density			Far Detector	Near Detector
Magnesium	1.710	g/cc		665.94	685.05 cps
Aluminum	2.590	g/cc		149.68	463.33 cps
Spine Angle = 75.32			Density/Spine Ratio = 0.570		






	Size		Reading	
Small Ring	7.85	in	4.20	V
Large Ring	14.00	in	9.25	V

Gamma Ray Calibration Report
------------------------------

Serial Number:	2001	
Tool Model:	OH	
Performed:	Tue Jul 10 07:42:35 2007	
Calibrator Value:	1.0	GAPI
Background Reading:	0.0	cps
Calibrator Reading:	1.0	cps
Sensitivity:	0.1700	GAPI/cps

Neutron Calibration Report
----------------------------

Serial Number:	5145	
Tool Model:	G	
Performed:	Sat Jul 21 07:01:21 2007	
Calibrator Value:	1200	NAPI
Calibrator Reading:	1700	cps
Sensitivity:	1	NAPI/cps

Sensor	Offset (ft)	Schematic	Description	Len (ft)	OD (in)	Wt (lb)
NEU	37.19		None	0.75	1.50	5.00
			NEU-G (5145) Gearhart Epithermal	5.75	3.50	85.00
GR	31.62		GR-OH (2001) SIE	3.50	3.25	40.00
LSD	23.45		CDL-poilex (2118)	8.79	4.00	275.00
DCAL	23.04					
SSD	22.91					
CILD SP	10.60 10.60		DIL-G (5375) Gearhart	20.83	4.00	345.00
CILM	6.89					

RLL3	1.70					
Dataset: xtoge3003.db: field/well/run1/pass2 Total Length: 39.62 ft Total Weight: 750.00 lb O.D. 4.00 in						