

Patterson

**CEMENT
BOND
LOG**

Company Pioneer Natural Resources
Well Tiaga 23-14 Tr
Field Purgatoire River
County Las Animas State Colorado

Location: API # : 05 071 08590 00
2272' FSL & 2121' FWL
Other Services temp. dev.
Permanent Datum SEC 14 TWP 32S RGE 66W
Log Measured From Ground Level Elevation 7633'
Drilling Measured From Kelly Bushing 4' Above G.L. K.B. 7637'
D.F. -----
G.L. 7633'

Company Pioneer Natural Resources
Well Tiaga 23-14 Tr
Field Purgatoire River
County Las Animas
State Colorado

Date	11-07-05		
Run Number	One		
Depth Driller	1410'		
Depth Logger	1375'		
Bottom Logged Interval	1373'		
Top Log Interval	Surface		
Open Hole Size	7 7/8"		
Type Fluid	Water		
Density / Viscosity	///		
Max. Recorded Temp.	105 DEG F		
Estimated Cement Top	Surface		
Time Well Ready	ROA		
Time Logger on Bottom	1:45 P.M.		
Equipment Number	T720		
Location	Trinidad		
Recorded By	M. Norton		
Witnessed By			

Borehole Record				Tubing Record			
Run Number	Bit	From	To	Size	Weight	From	To

Casing Record	Size	Wgt/Ft	Top	Bottom
Surface String	8 5/8"		00	942'
Prot. String				
Production String	5 1/2"		00	N/A
Liner				

<<< Fold Here >>>

All interpretations are opinions based on inferences from electrical or other measurements and we cannot and do not guarantee the accuracy or correctness of any interpretation, and we shall not, except in the case of gross or willful negligence on our part, be liable or responsible for any loss, costs, damages, or expenses incurred or sustained by anyone resulting from any interpretation made by any of our officers, agents or employees. These interpretations are also subject to our general terms and conditions set out in our current Price Schedule.

Comments

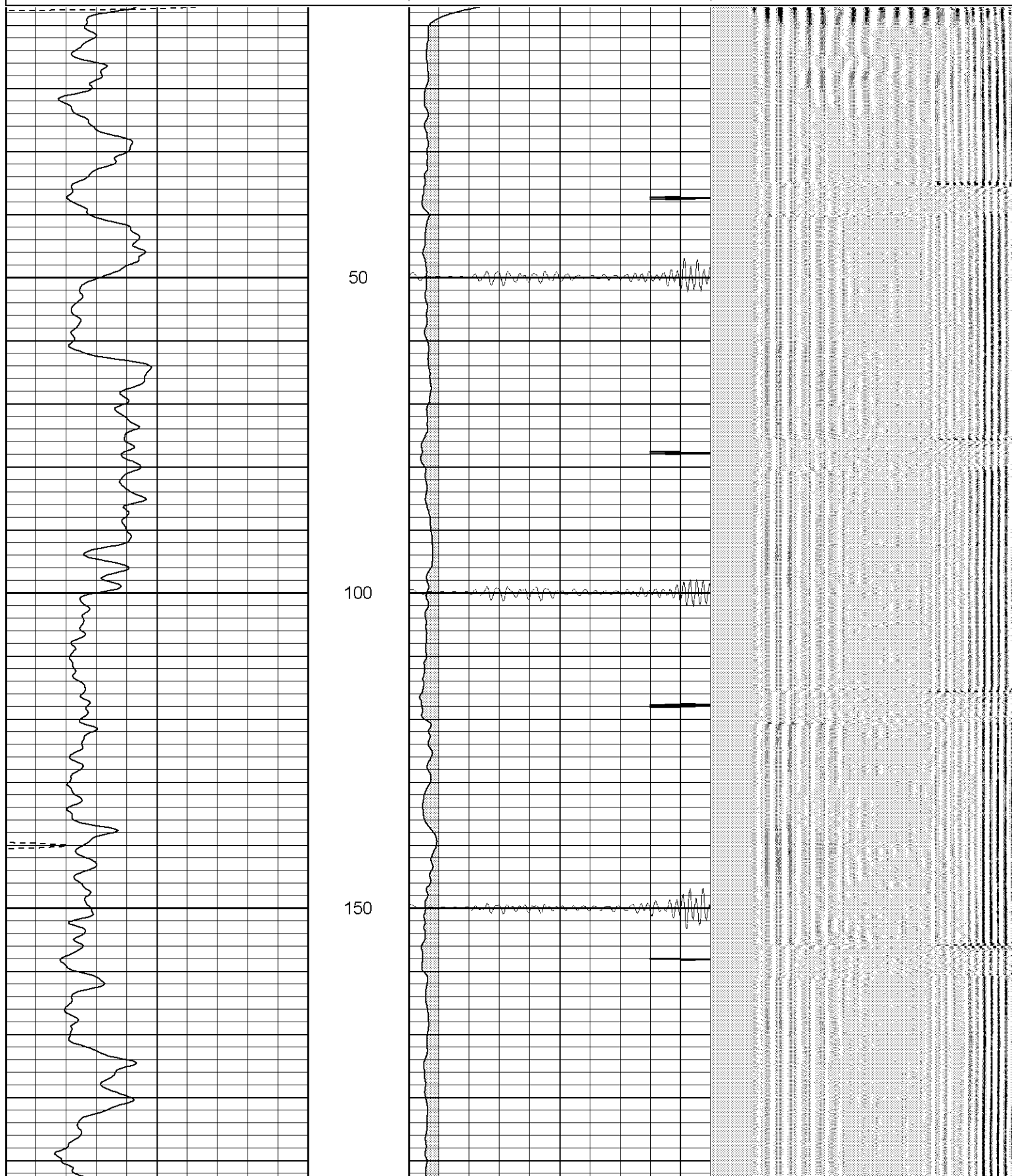
Well Directions:
Bon Carbo Right At Post Office, Left on County Road 51.0,At Y Left Thru The Trojan,
Stay On Main Road, At Y Right Thru Double Green Gate To Location.
Well Deviated 1.5 Degrees At Logger T.D.

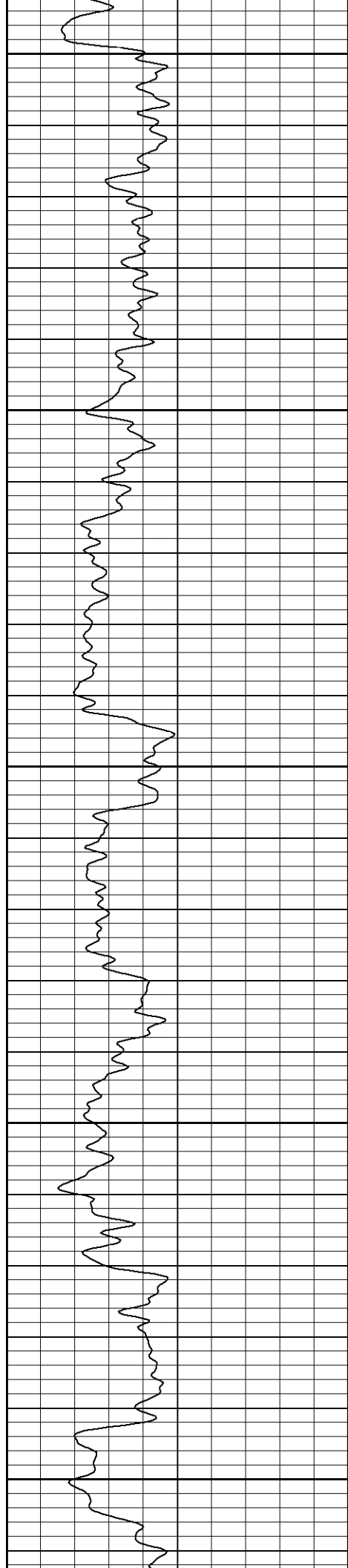
Patterson

Main Pass

Database File: tiagatr110705b.db
Dataset Pathname: pass3.2
Presentation Format: cblrt
Dataset Creation: Tue Nov 08 08:54:42 2005 by Calc Warrior 7.0 STD Ope
Charted by: Depth in Feet scaled 1:240

0	GR (GAPI)	200	0	AMP3 (mV)	100	200	Variable Density	1200
400	TT3 (usec)	200	18	CCL	-2			
-----			100	CBL5	1200			





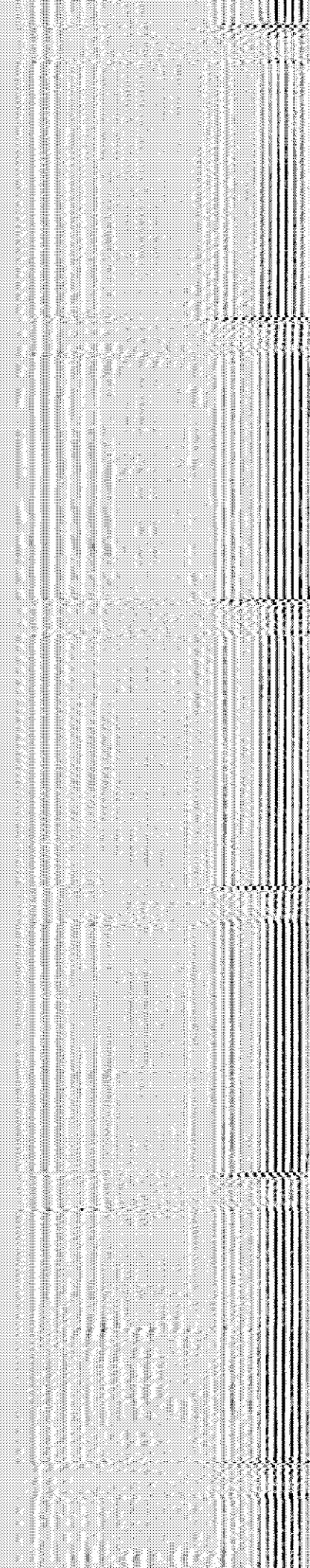
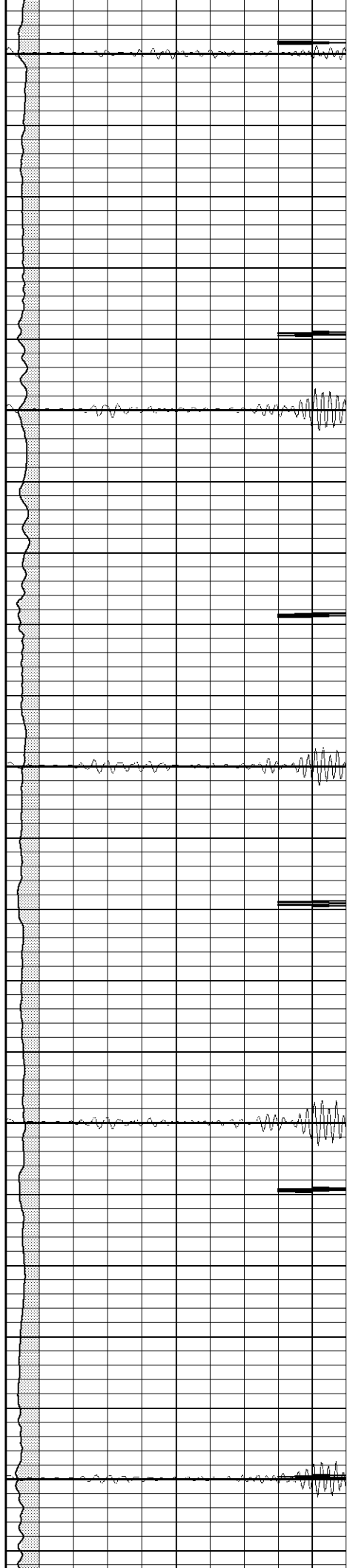
200

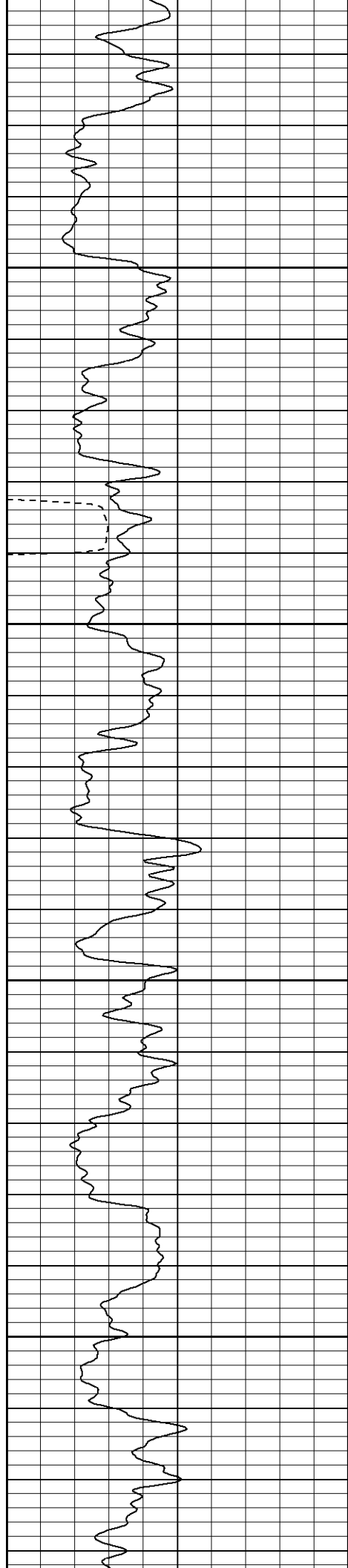
250

300

350

400



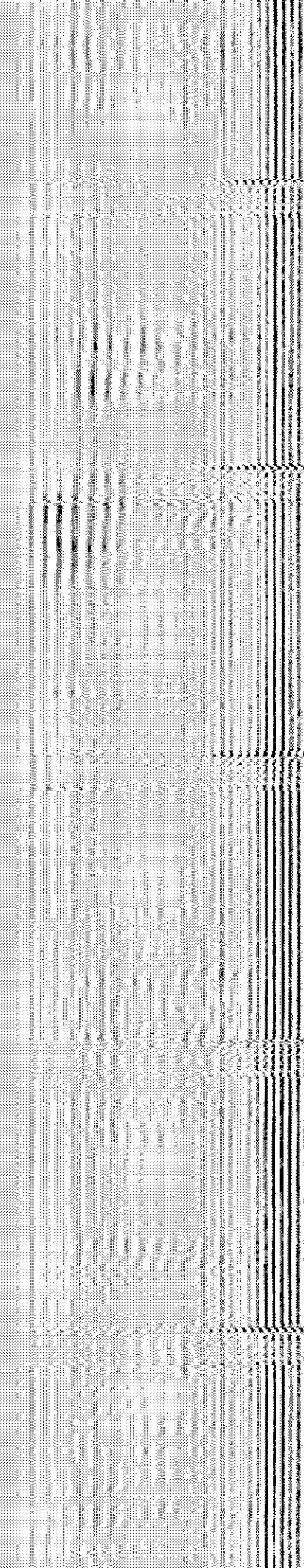
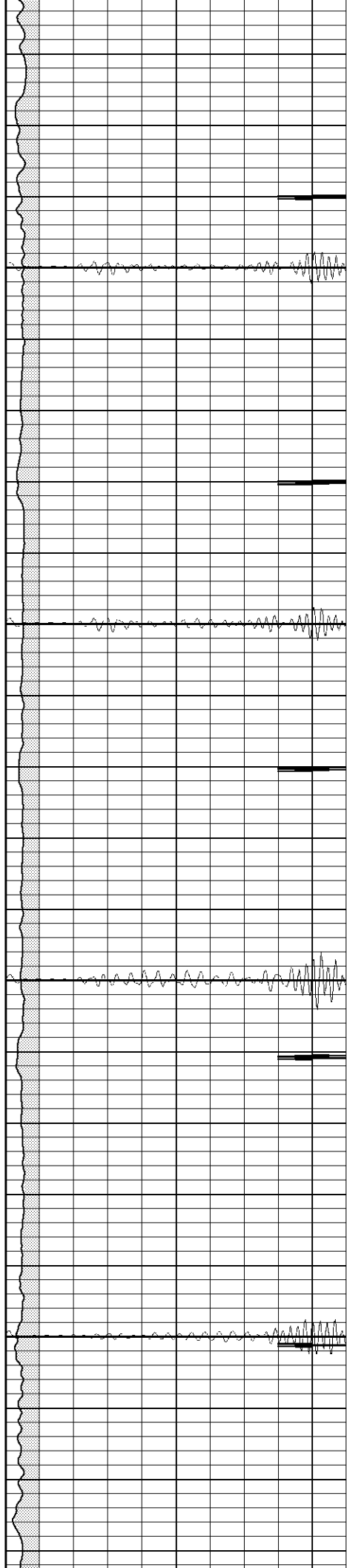


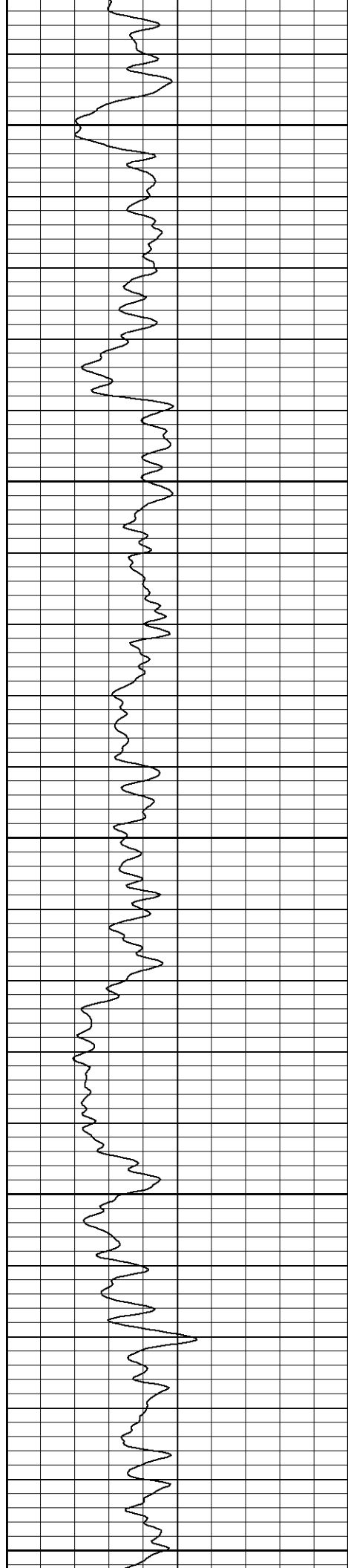
450

500

550

600





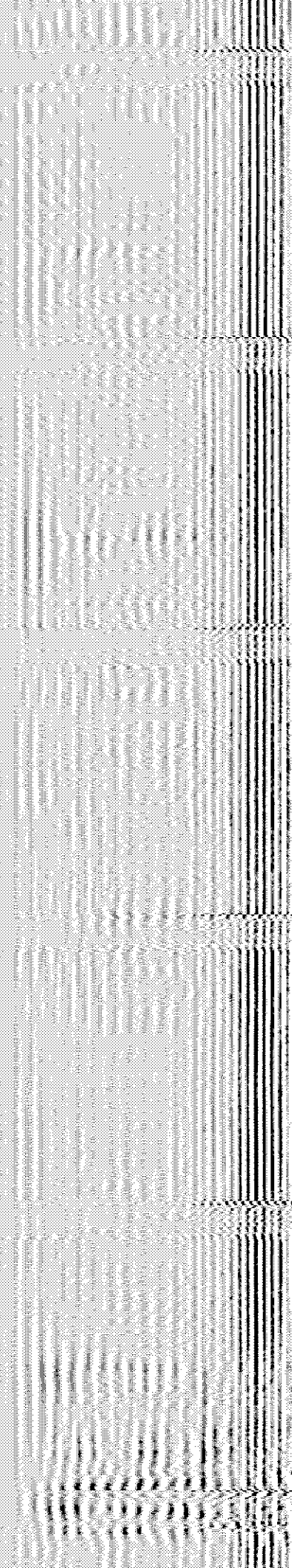
650

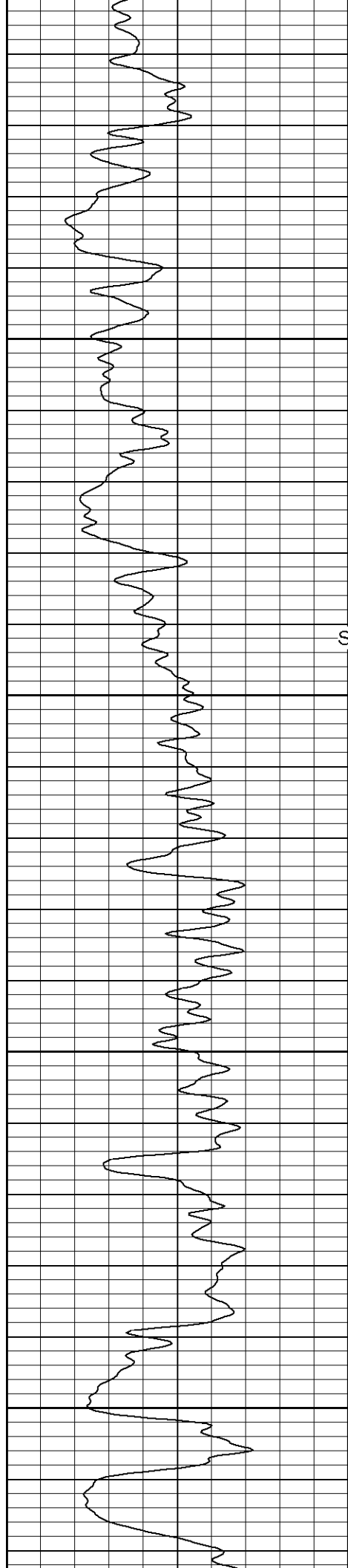
700

750

800

850





900

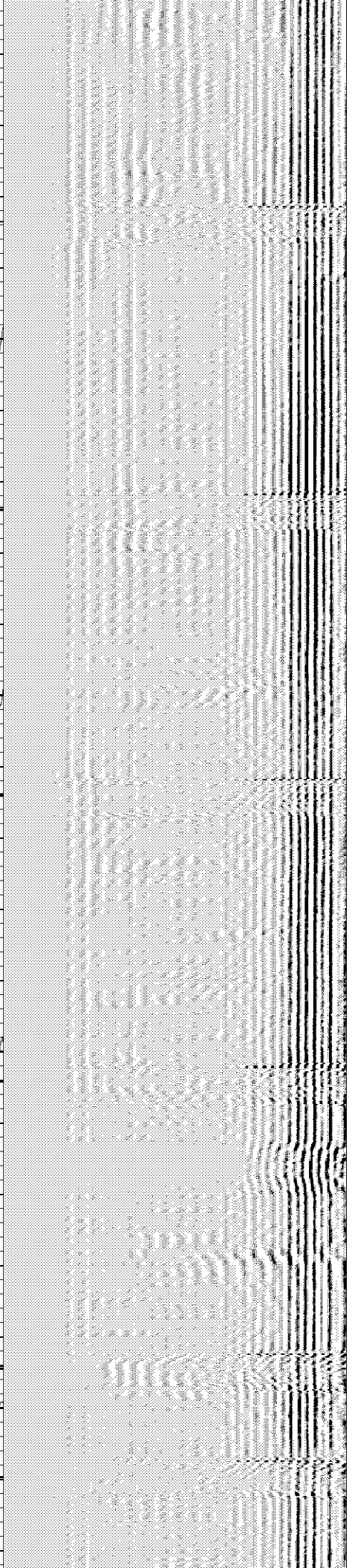
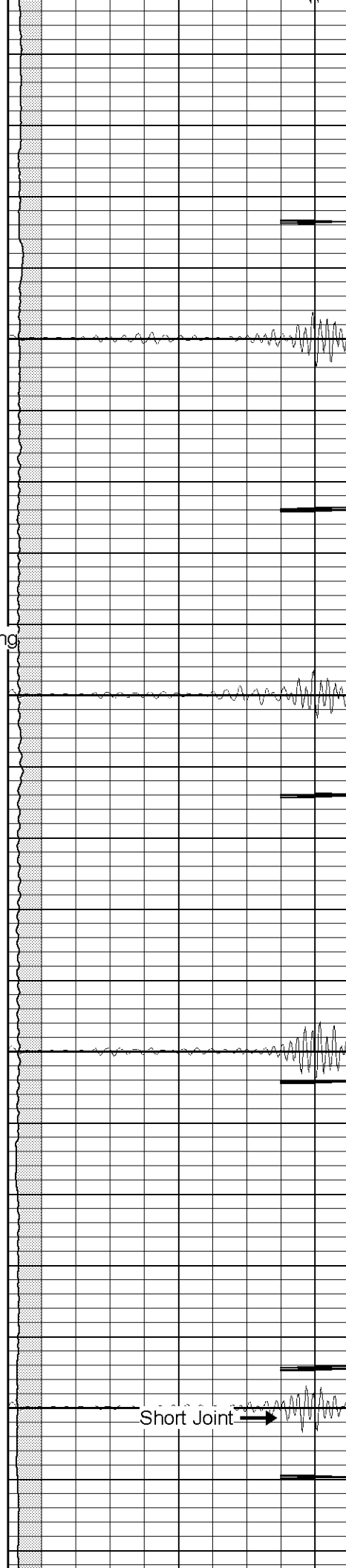
Surface Casing

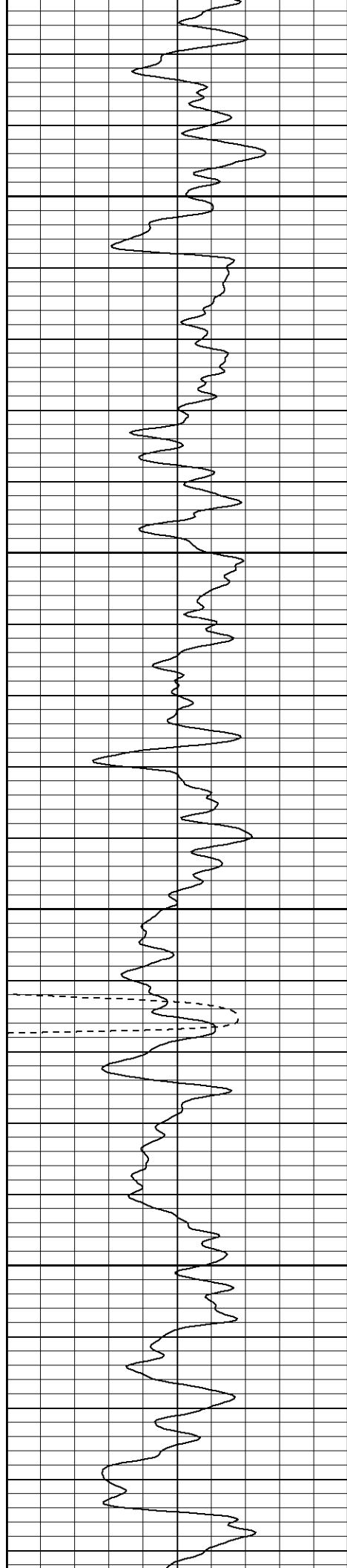
950

1000

1050

Short Joint →



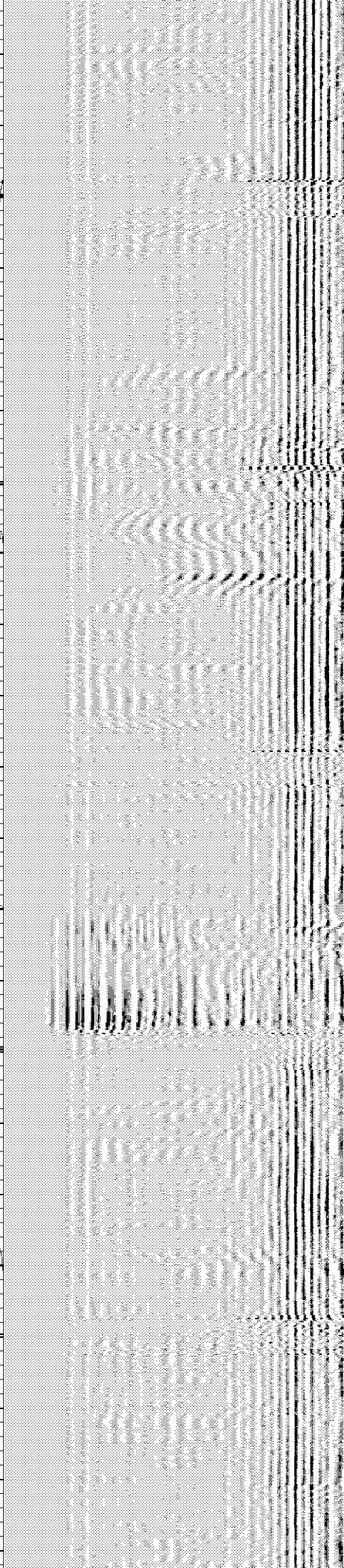
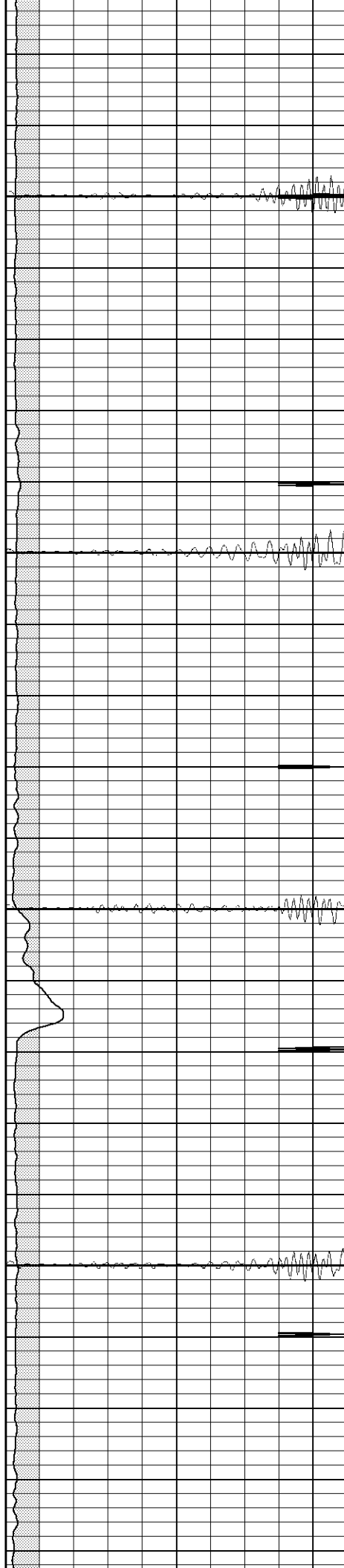


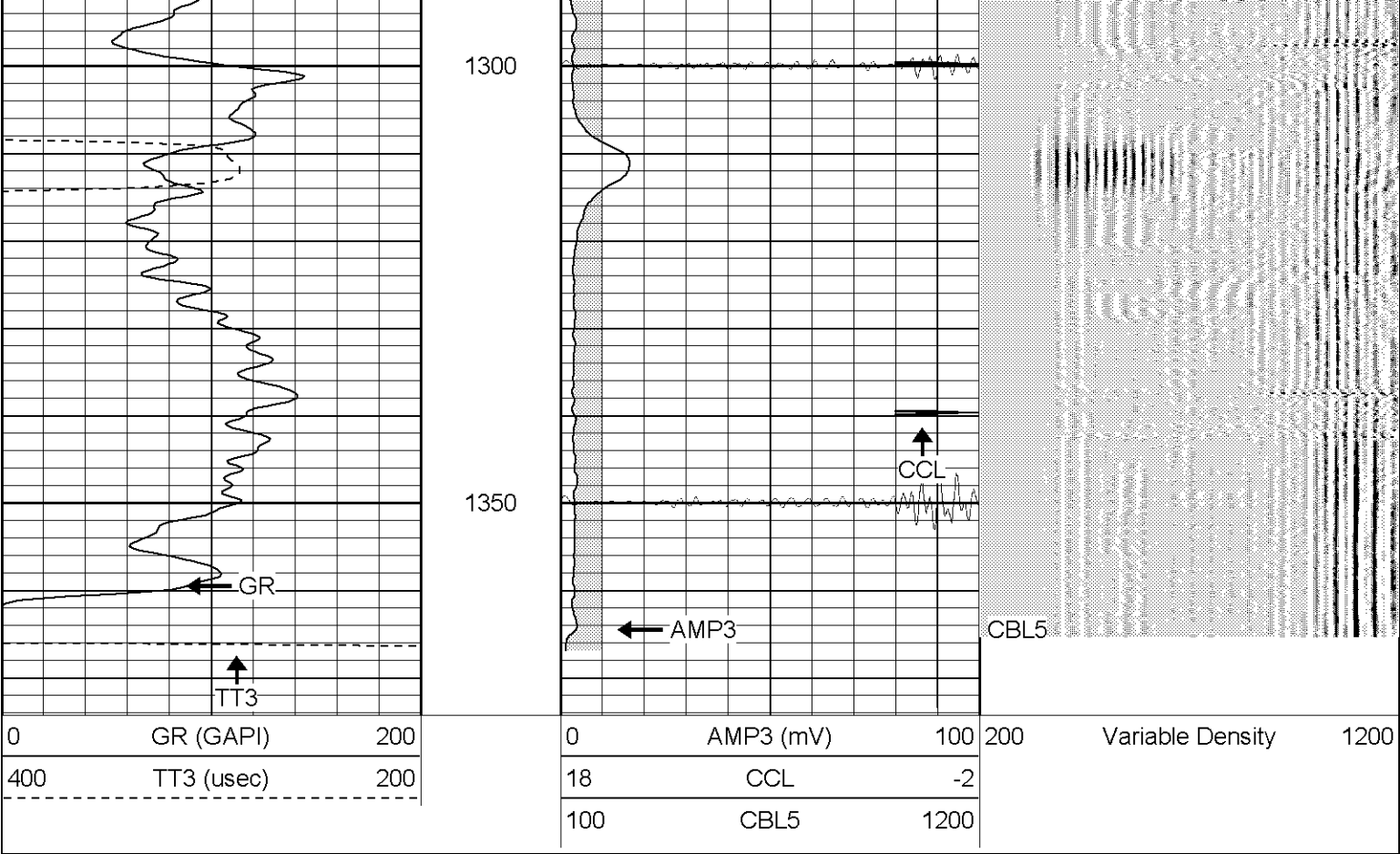
1100

1150

1200

1250

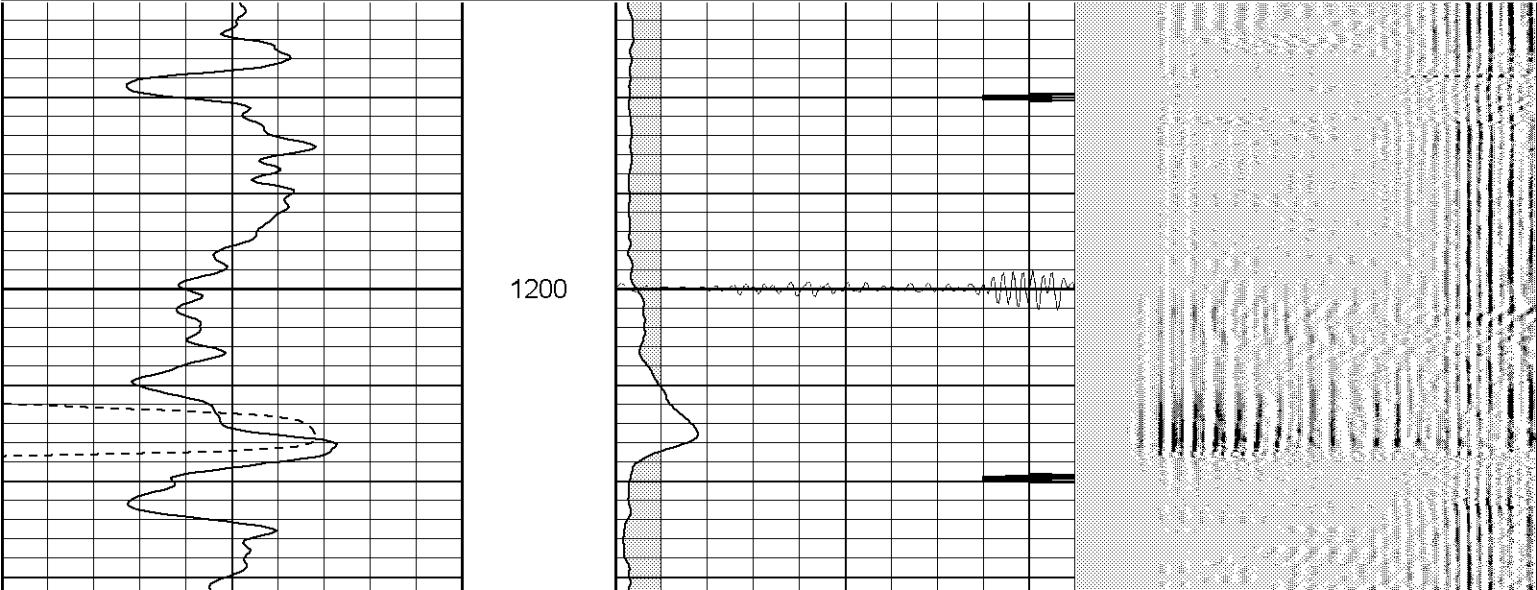
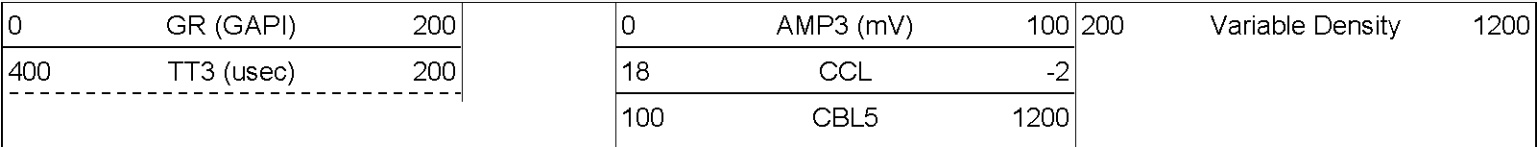


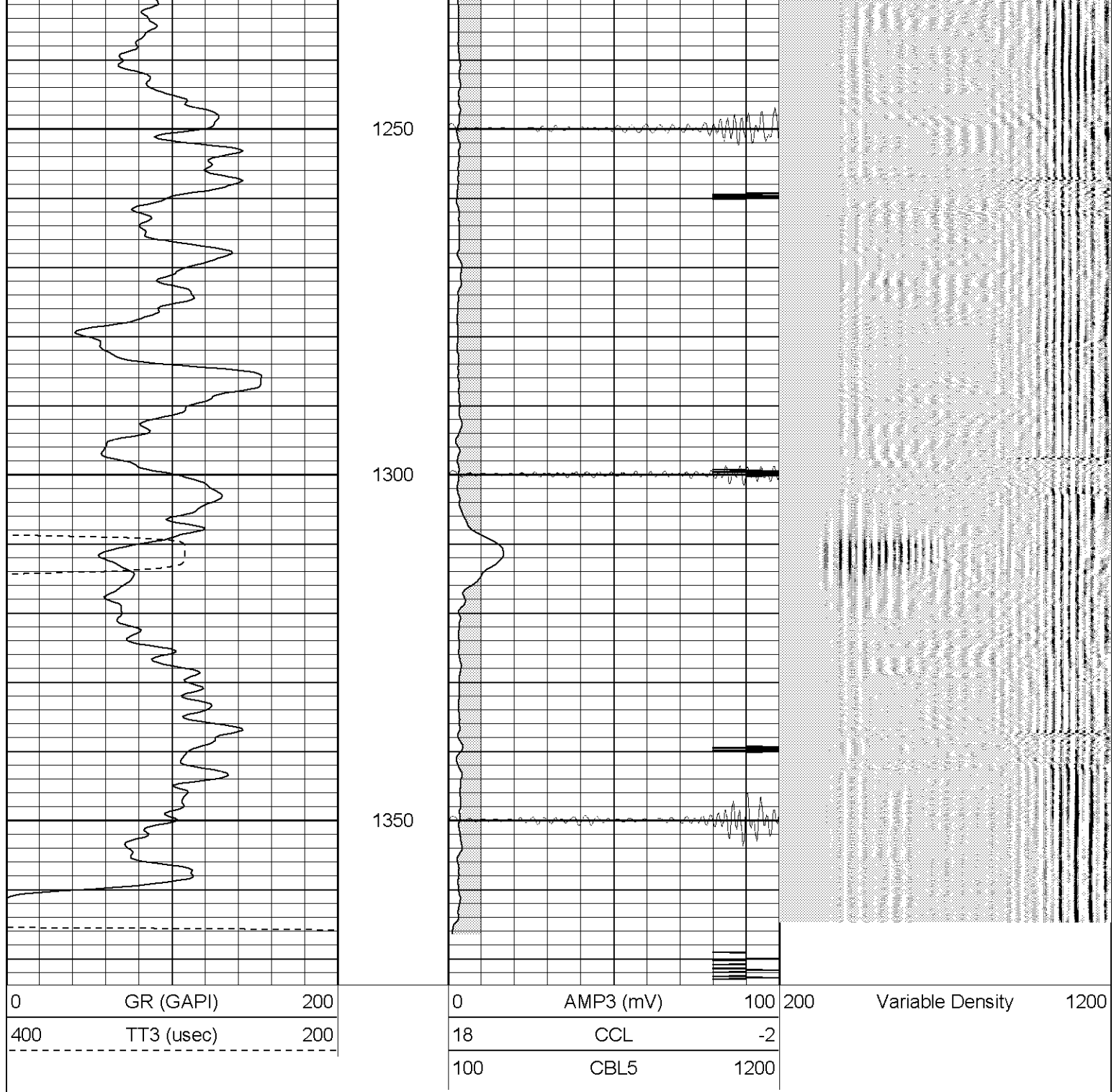


Patterson

Repeat Section

Database File: tiagatr110705b.db
Dataset Pathname: pass1.2
Presentation Format: cblrt
Dataset Creation: Tue Nov 08 08:58:57 2005 by Calc Warrior 7.0 STD Ope
Charted by: Depth in Feet scaled 1:240





Cement Bond Log Calibration Report

Serial Number:	Titan3		
Tool Model:	T3		
Performed:	Mon Nov 07 09:55:44 2005		
Depth:	0	ft	
Casing Diameter:	0	in	
	3' Spacing	5' Spacing	
Signal Zero:	1	1	mV
Calibrated Amplitude:	85	85	mV
Reading at Signal Zero:	-0.01	-0.01	V
Reading in Free Pipe:	1.95	1.45	V
Gain:	42.8571	57.5342	

Offset:

1.42857

1.57534

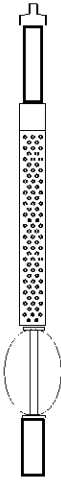
Gamma Ray Calibration Report

Serial Number: Titan3
 Tool Model: T3
 Performed: Mon Nov 07 09:55:42 2005

 Calibrator Value: 1.0 GAPI

 Background Reading: 0.0 cps
 Calibrator Reading: 1.0 cps

 Sensitivity: 1.1200 GAPI/cps

Sensor	Offset (ft)	Schematic	Description	Len (ft)	OD (in)	Wt (lb)
CHD	15.41		None	0.75	1.50	5.00
GR	13.40		GR-T3 (Titan3) Titan3	2.52	2.25	25.00
WVF5	9.24		CBL-T3 (Titan3) Titan3	7.23	2.25	110.00
WVF3	8.24					
CENT	4.91		X	3.00	1.69	25.00
CCL	0.70		CCL-T2 (Titan2) Short	1.91	2.75	15.00
<div>Dataset: /field/well/run/_plots/_jobs/cbl</div> <div>Total Length: 15.41 ft</div> <div>Total Weight: 180.00 lb</div> <div>O.D. 2.75 in</div>						