



SUPERIOR
Black Lick, Pa.
Mercer, Pa.
Wooster, Oh.
Cleveland, Ok.
Trinidad, Co.

DUAL INDUCTION LOG

Company XTO Energy Inc.
Well Apache Canyon 31-10
Field Purgatory River
County Las Animas State Colorado

Location: API # : 071 09115 00

2444' FSL & 1644' FEL

SEC 31 TWP 33S RGE 67W

Permanent Datum Ground Level Elevation 7664'
Log Measured From Ground Level
Drilling Measured From Ground Level

Other Services
CDL
NEUTRON
Elevation
K.B. -----
D.F. -----
G.L. 7664'

Date 3-4-07

Run Number One

Depth Driller 2240'

Depth Logger 2242'

Bottom Logged Interval 2240'

Top Log Interval Surface Casing

Casing Driller 8 5/8" @ 500'

Casing Logger 500'

Bit Size 7 7/8"

Type Fluid in Hole Water

Density / Viscosity ///

pH / Fluid Loss ///

Source of Sample ///

Rm @ Meas. Temp ///

Rmf @ Meas. Temp ///

Rmc @ Meas. Temp ///

Source of Rmf / Rmc ///

Rm @ BHT ///

Time Circulation Stopped 9:45 P.M.

Time Logger on Bottom 12:15 A.M.

Maximum Recorded Temperature 91 DEG F

Equipment Number T0697

Location Trinidad

Recorded By M. Norton

Witnessed By Mr. Don Johnson

>>> Fold Here >>>

All interpretations are opinions based on inferences from electrical or other measurements and we cannot and do not guarantee the accuracy or correctness of any interpretation, and we shall not, except in the case of gross or willful negligence on our part, be liable or responsible for any loss, costs, damages, or expenses incurred or sustained by anyone resulting from any interpretation made by any of our officers, agents or employees. These interpretations are also subject to our general terms and conditions set out in our current Price Schedule.

Comments

Well Directions:

Second Bosque entrance four miles past Weston turn left,
at Y stay left on Ciruele Canyon, drive to wind mill, 1st left then to location.



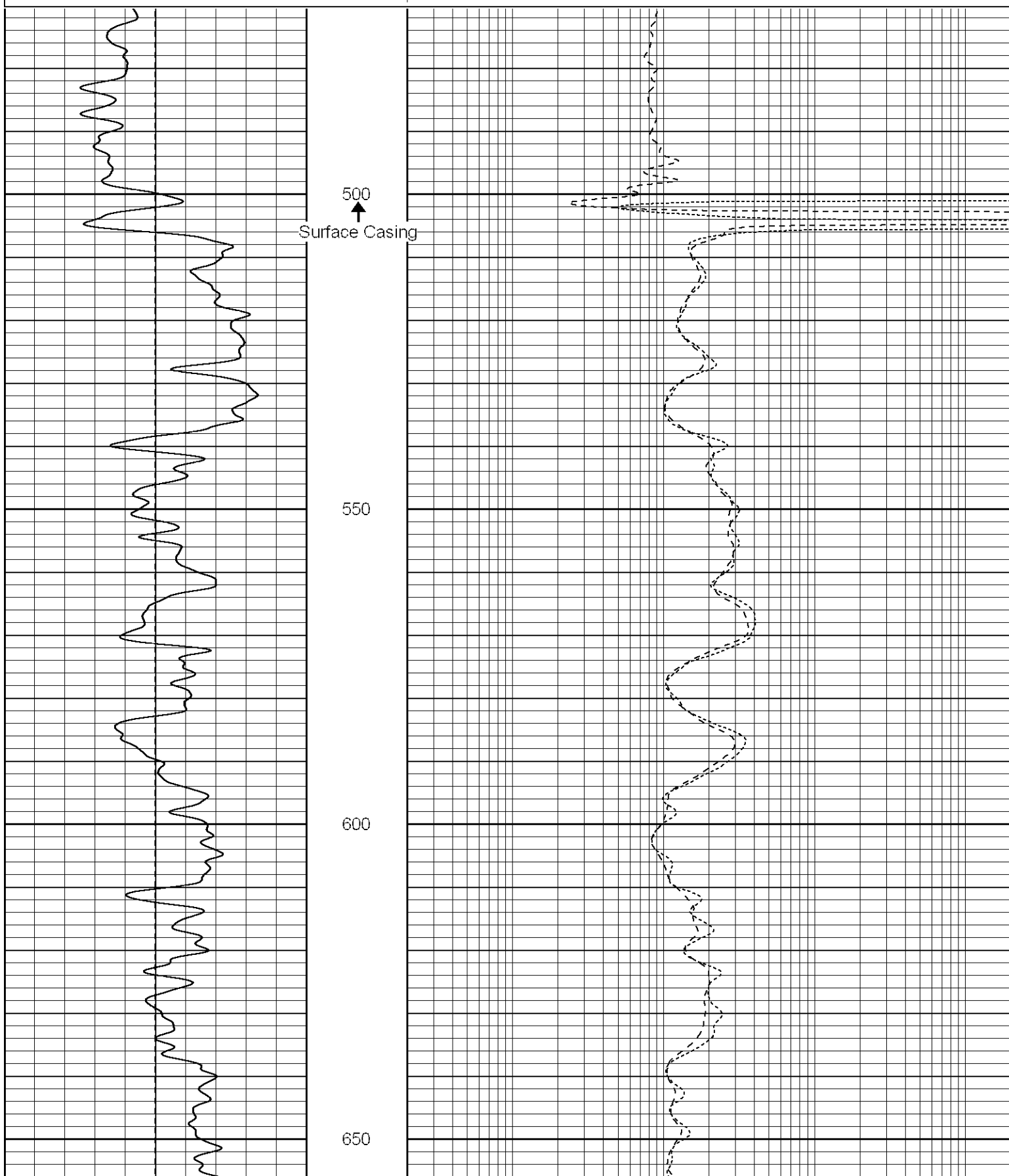
SUPERIOR
Black Lick, Pa.
Mercer, Pa.
Wooster, Oh.
Cleveland, Ok.
Trinidad, Co.

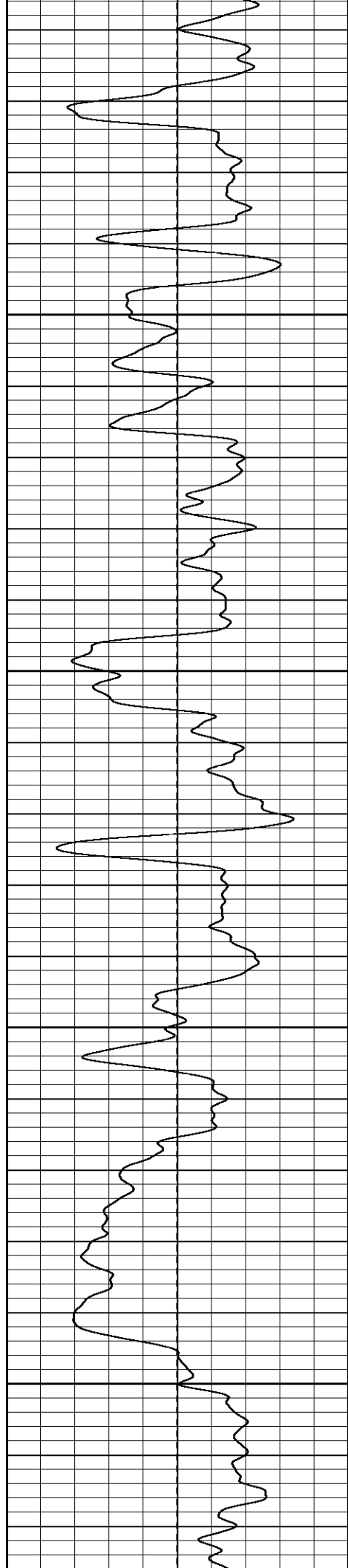
Main Pass

Database File: xtoac3110.db
Dataset Pathname: ac/well/dil/pass2.1
Presentation Format: dil
Dataset Creation: Sun Mar 04 02:27:10 2007 by Calc Open-Cased 061129
Charted by: Depth in Feet scaled 1:240

0	GR (GAPI)	200
-100	SP (mV)	100

0.2	RILM (Ohm-m)	2000
0.2	RILD (Ohm-m)	2000
0.2	RLL3 (Ohm-m)	2000



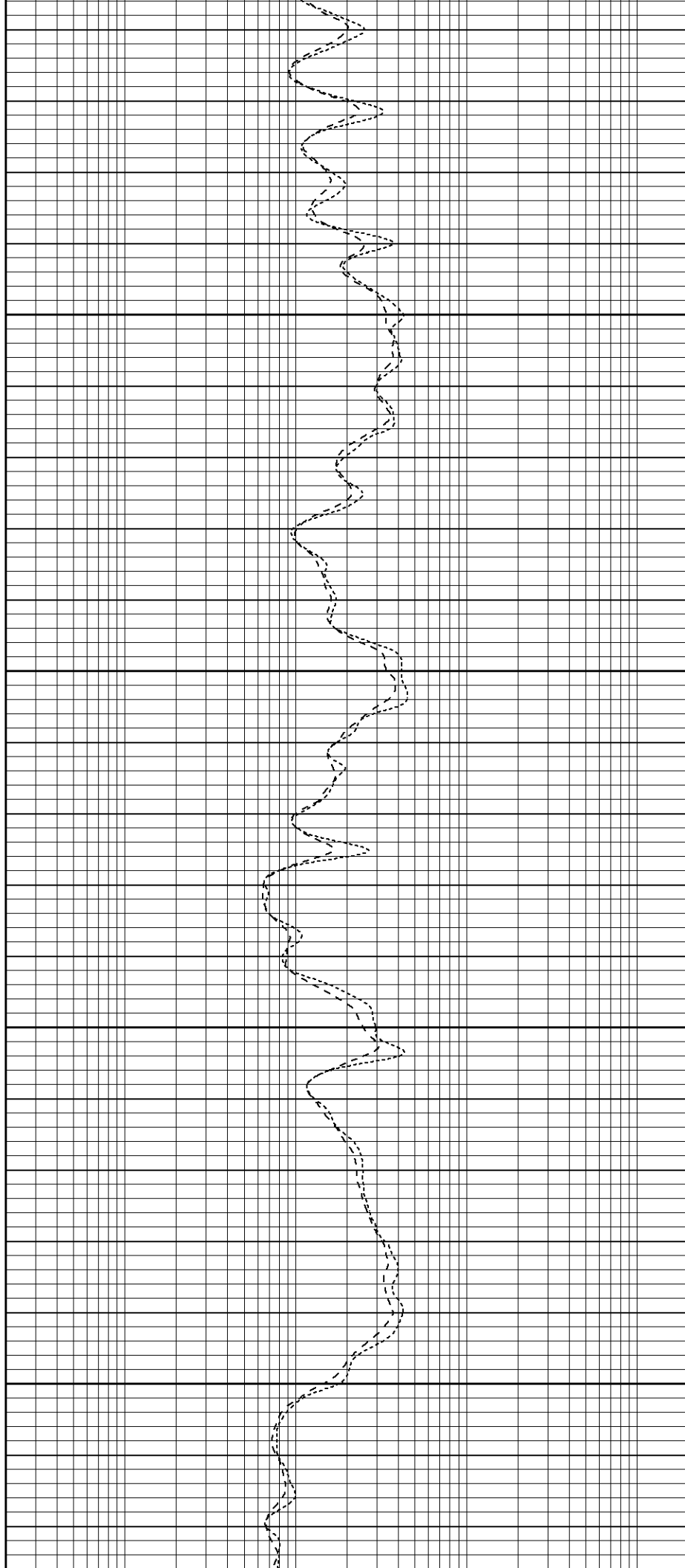


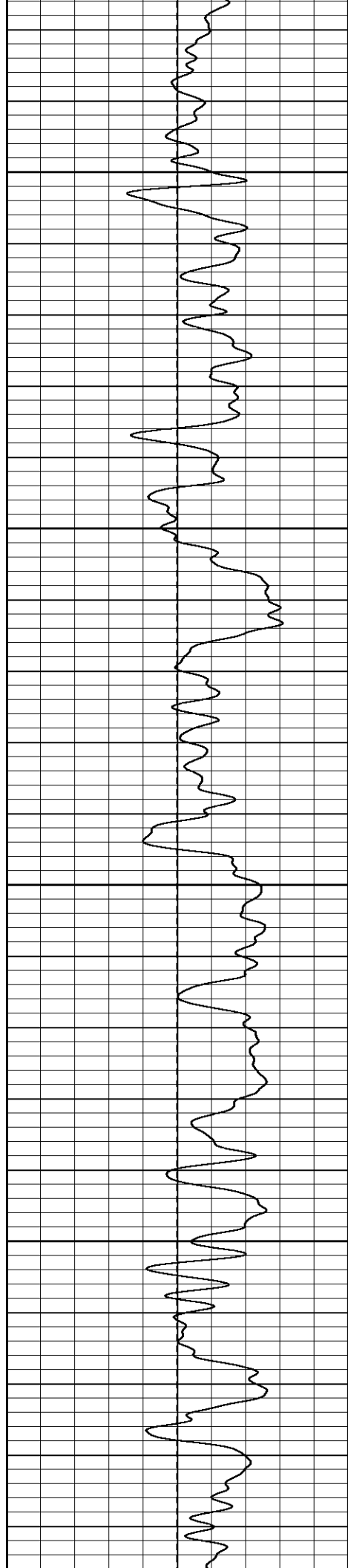
700

750

800

850



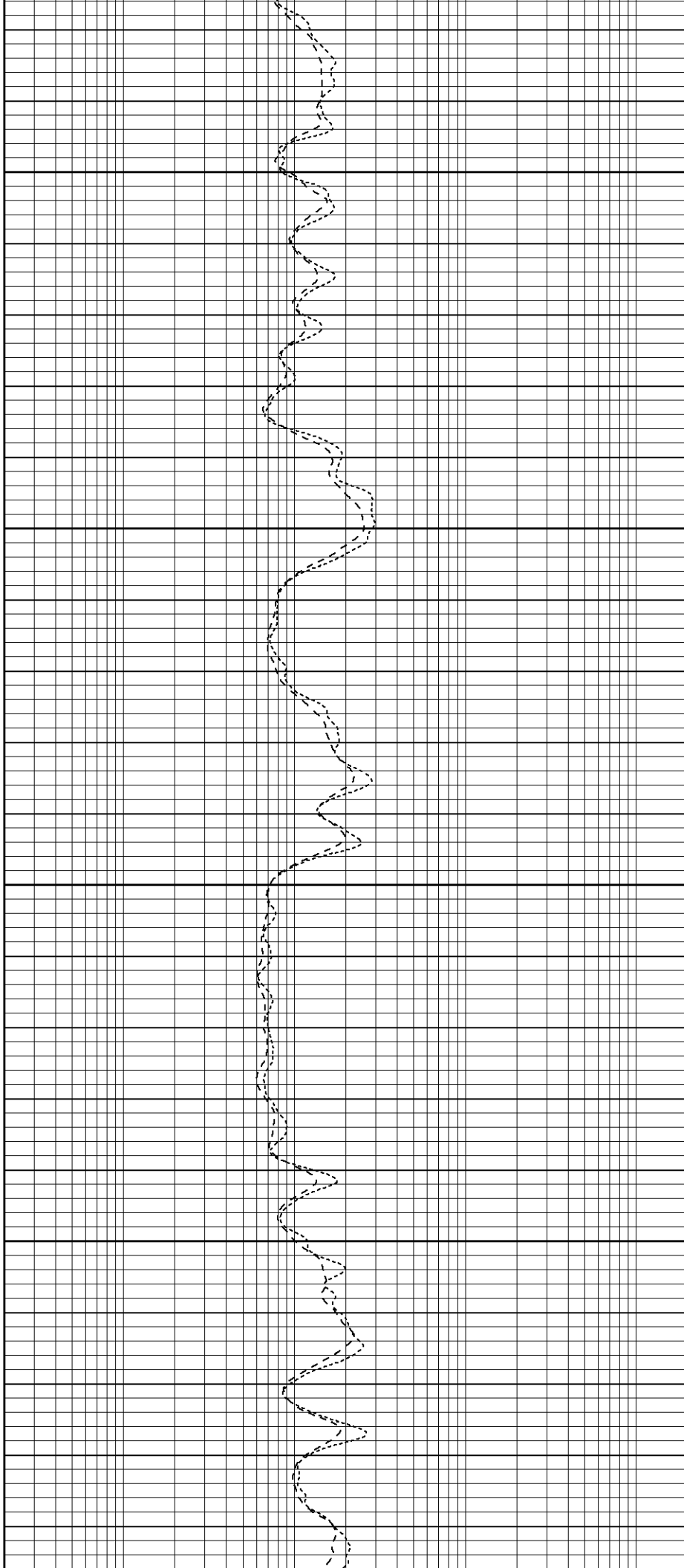


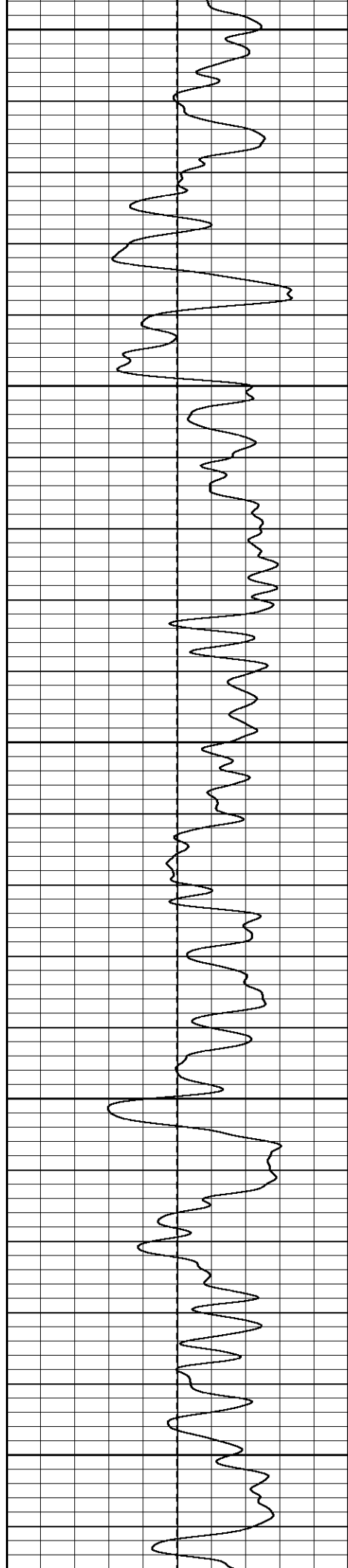
900

950

1000

1050





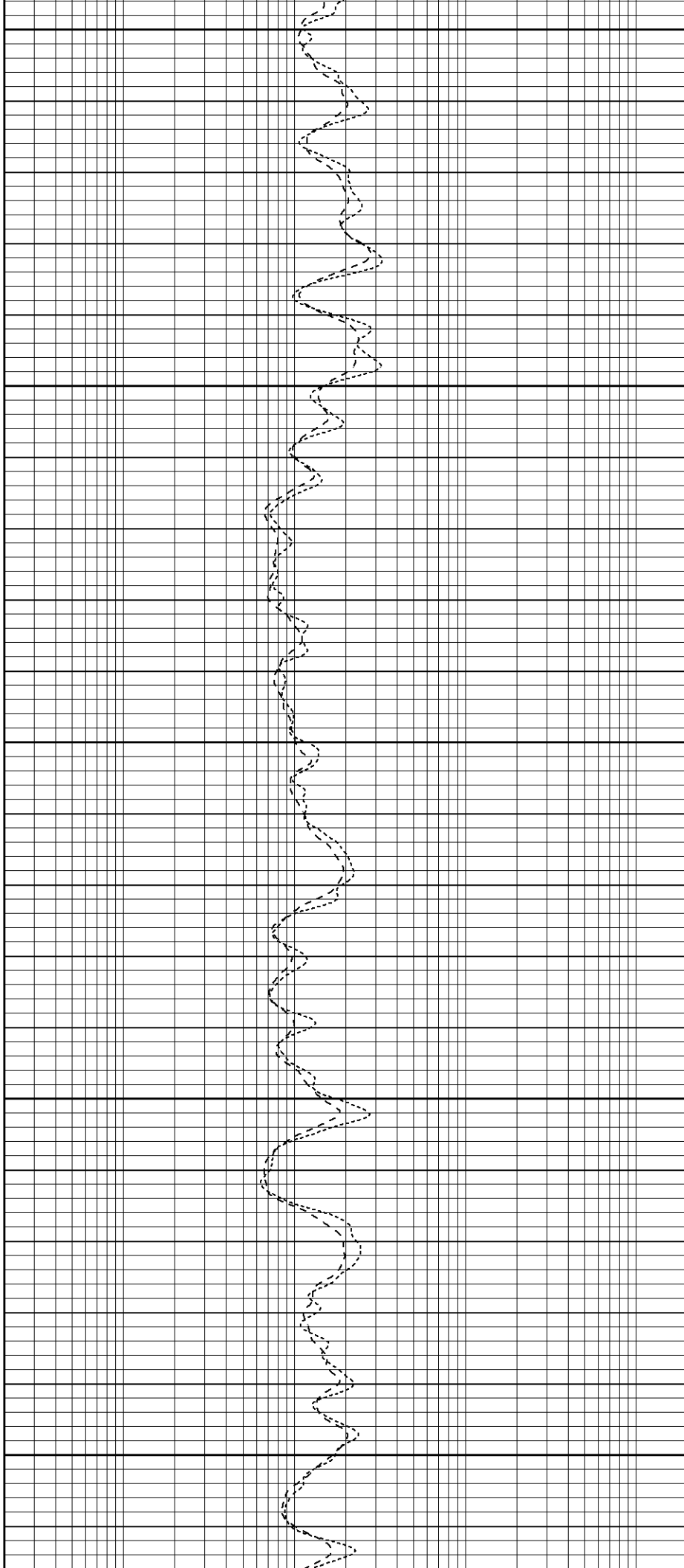
1100

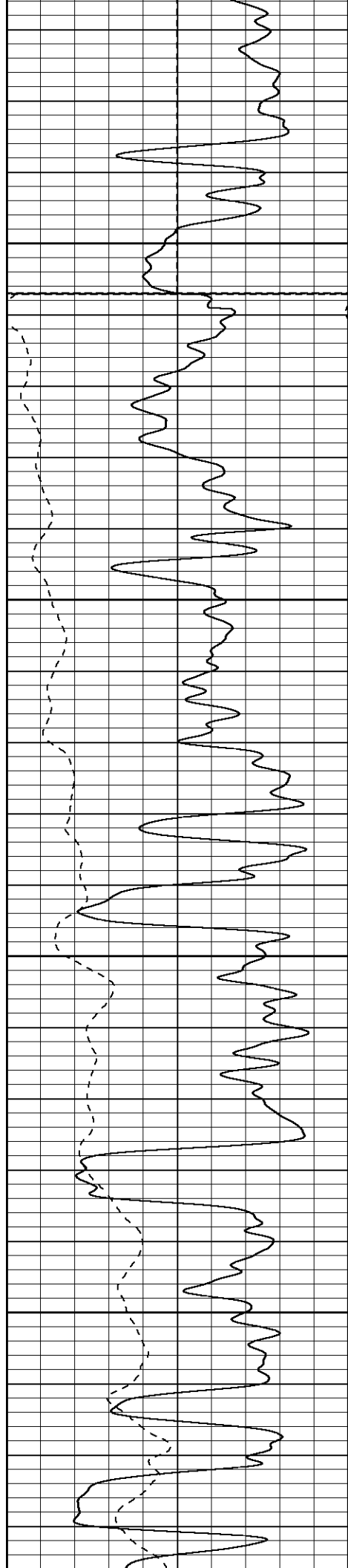
1150

1200

1250

1300





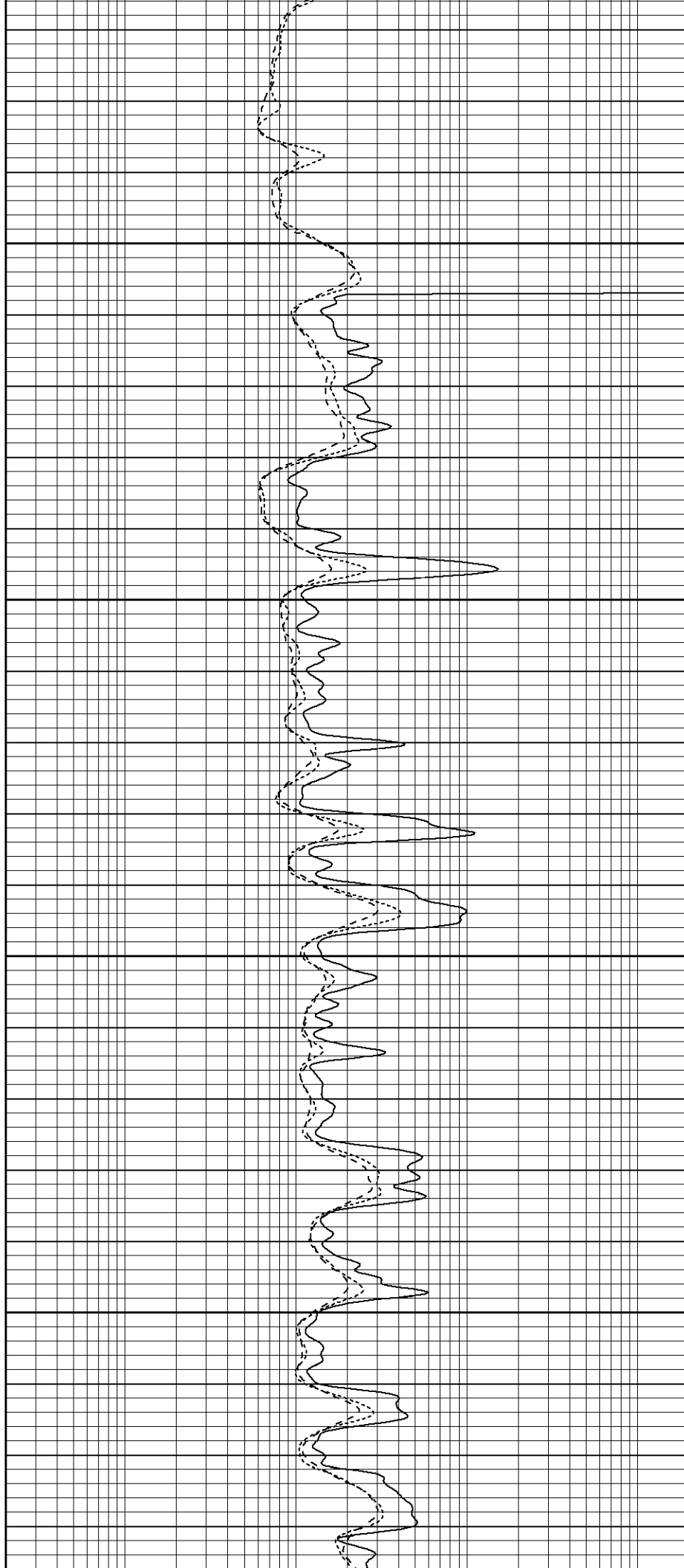
1350

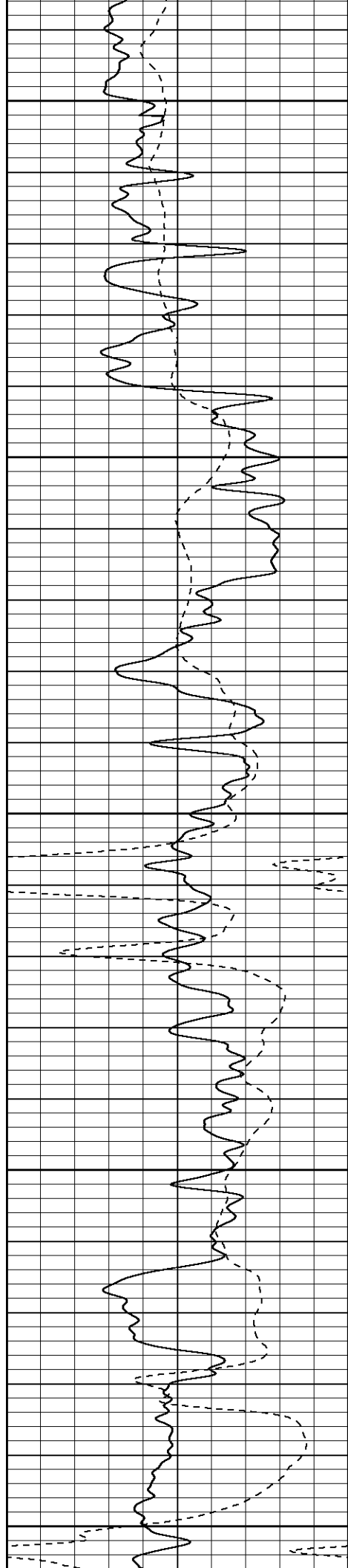
Fluid Level

1400

1450

1500





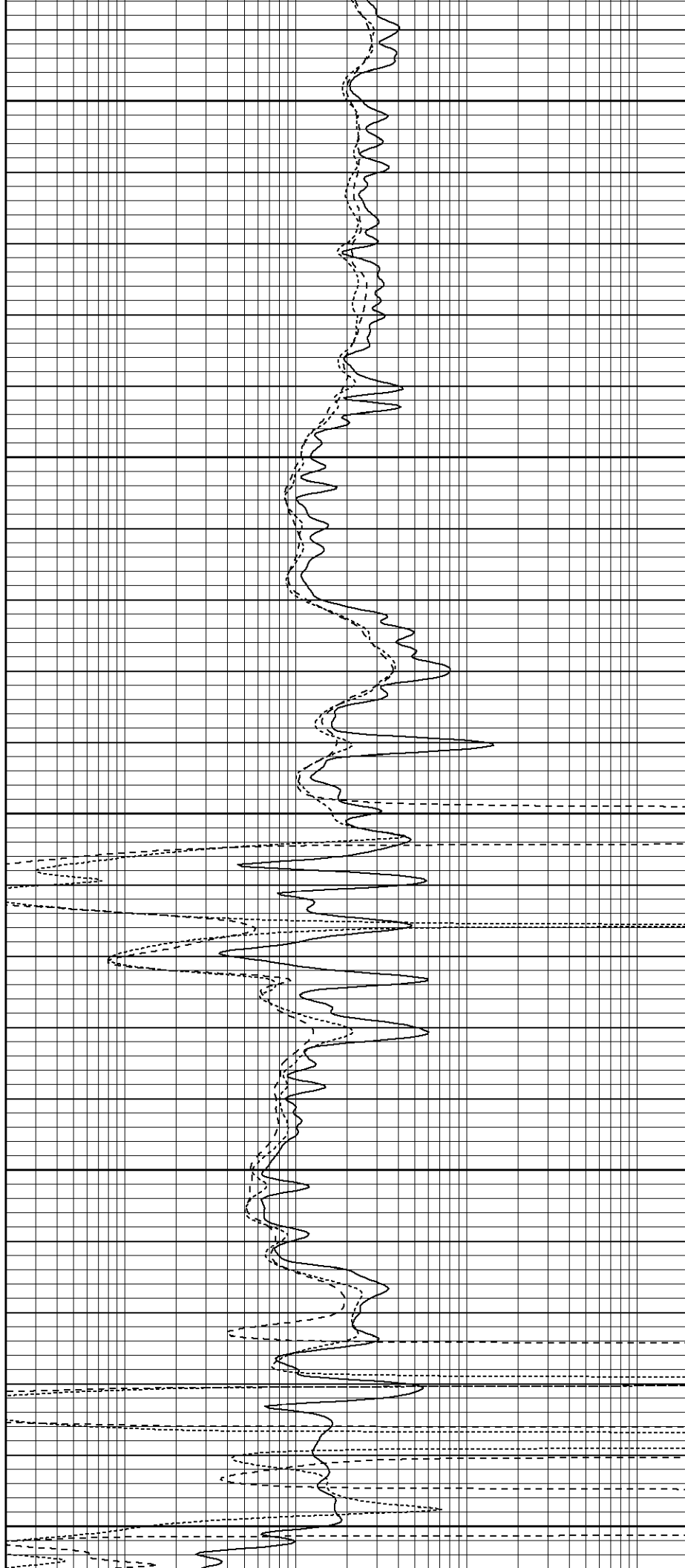
1550

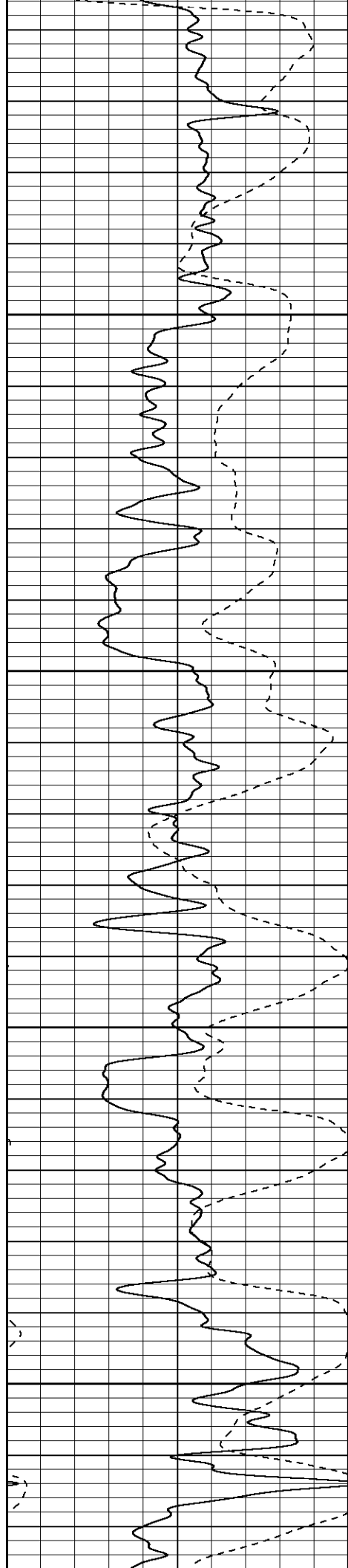
1600

1650

1700

1750



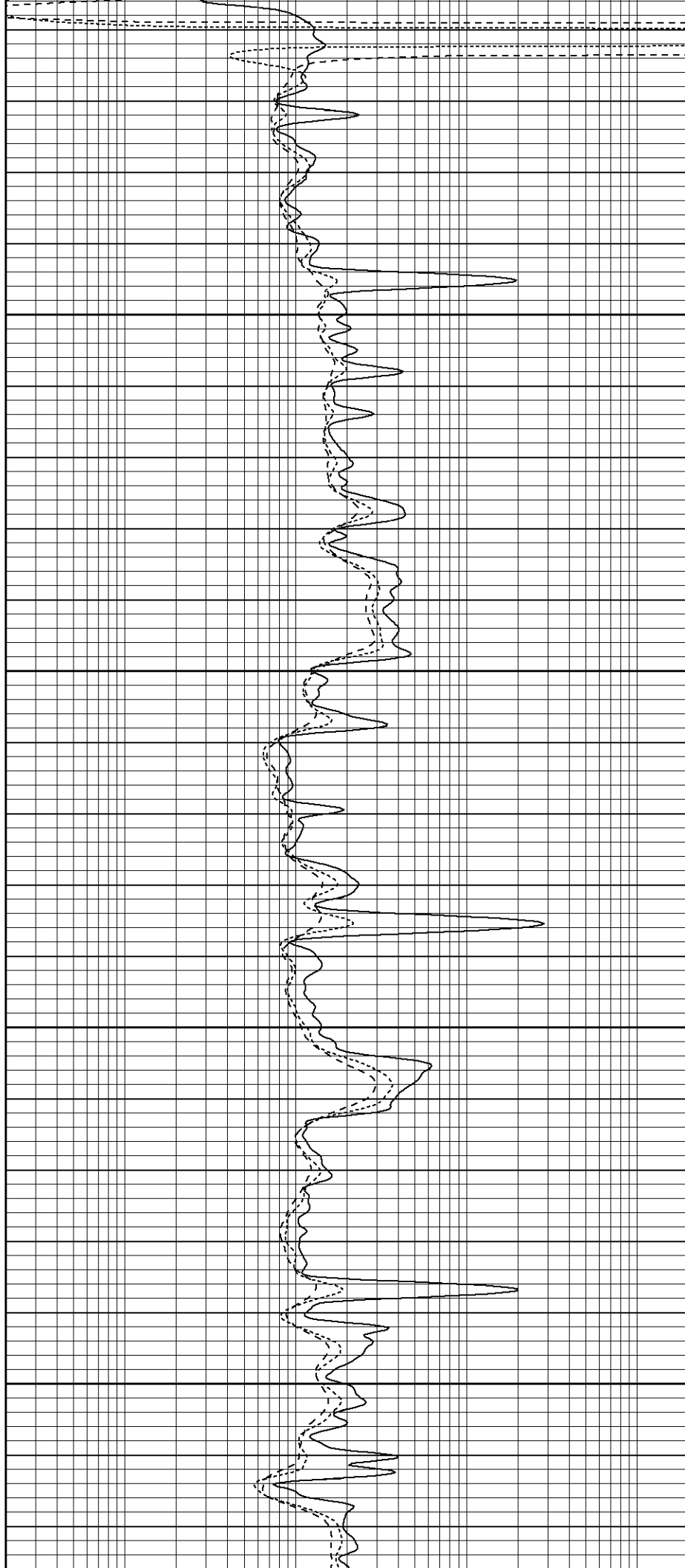


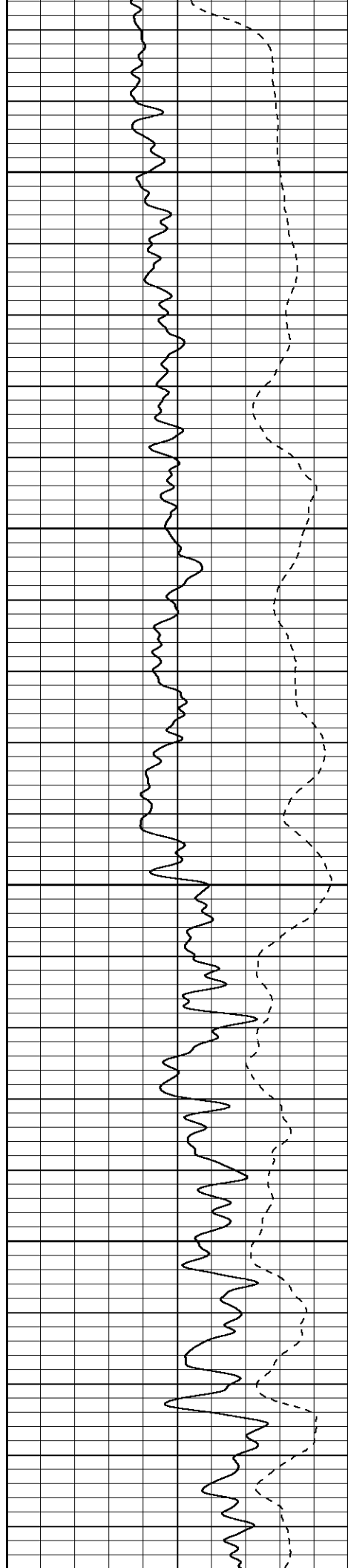
1800

1850

1900

1950



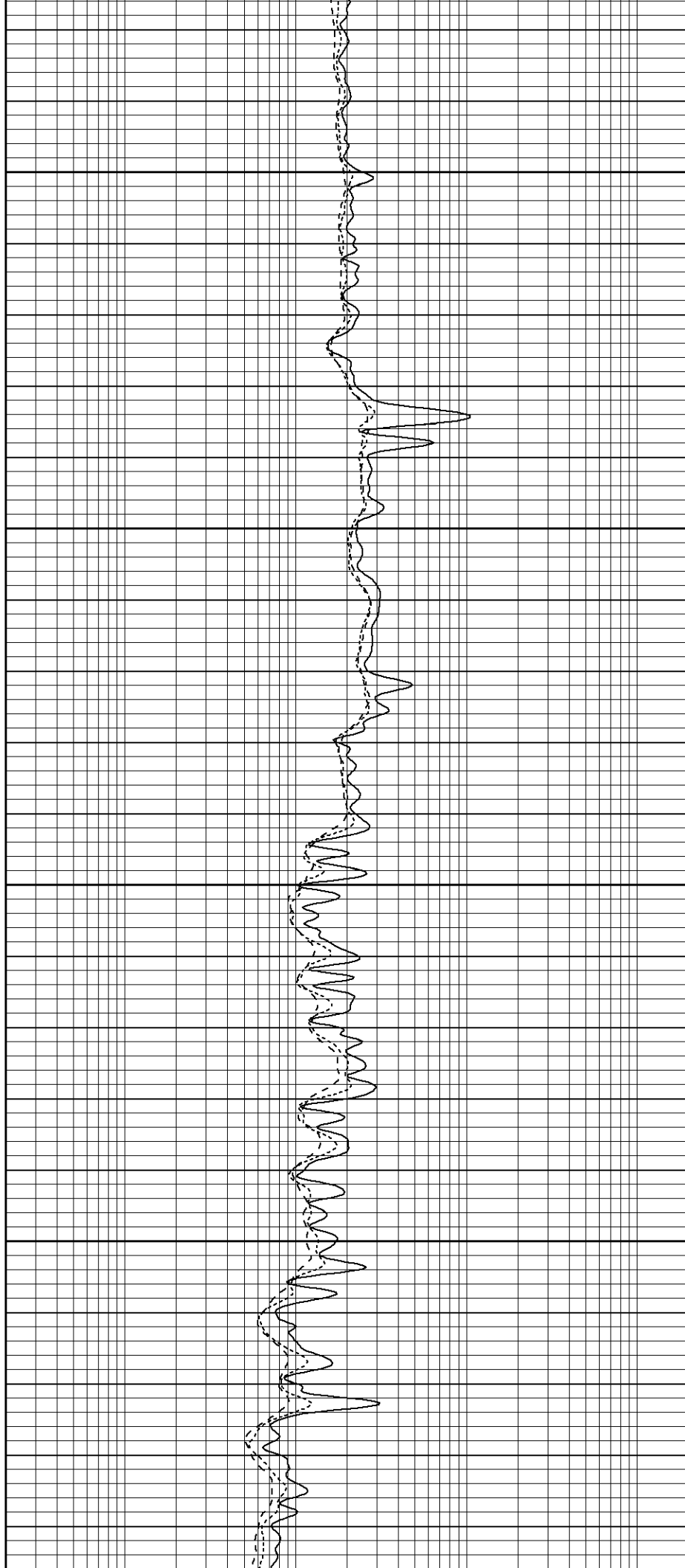


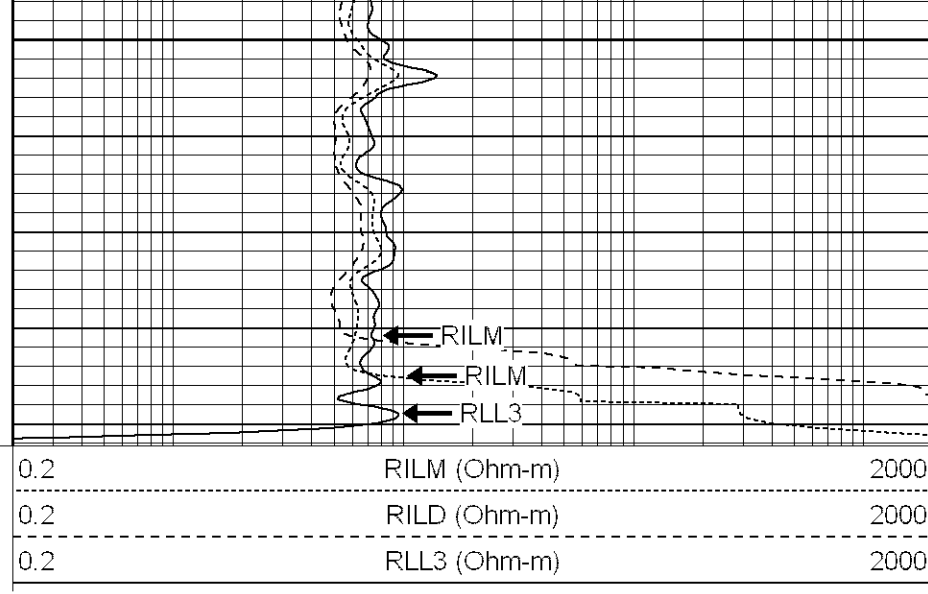
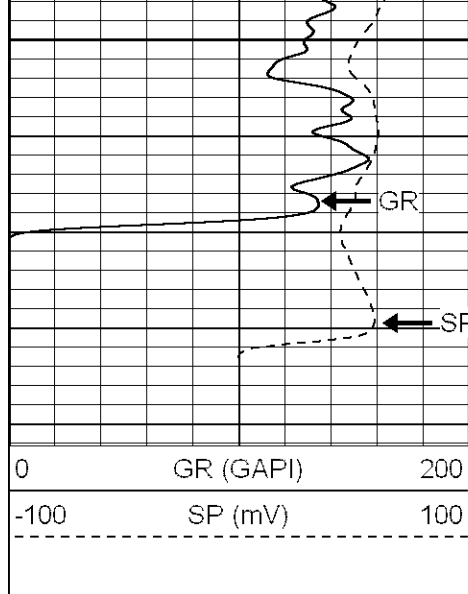
2000

2050

2100

2150





SUPERIOR

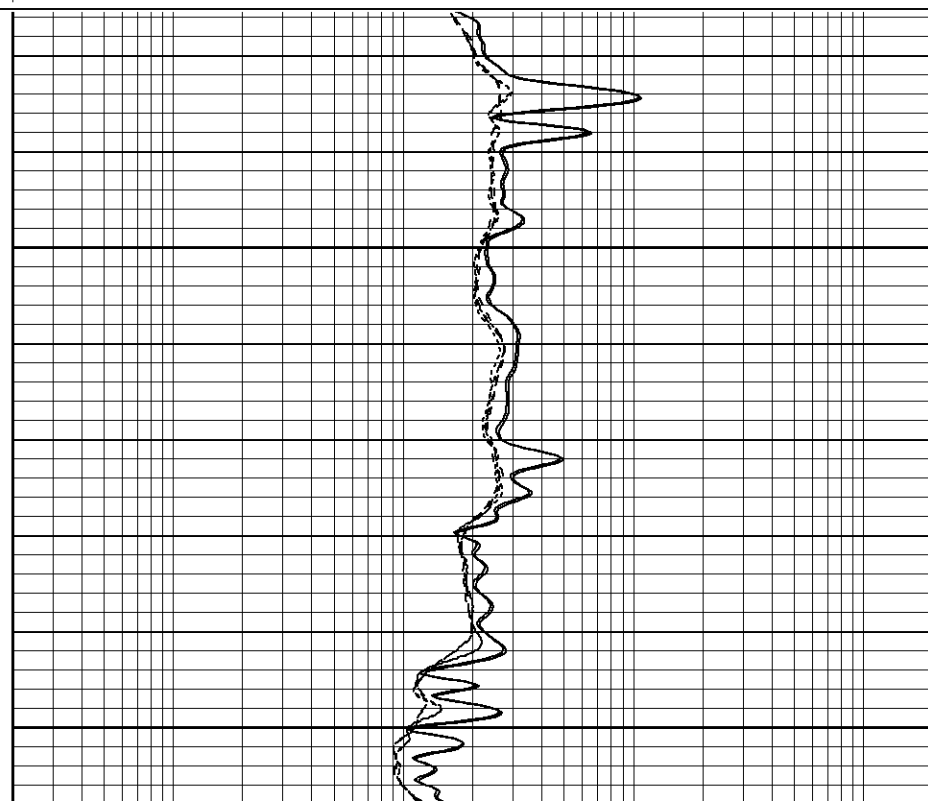
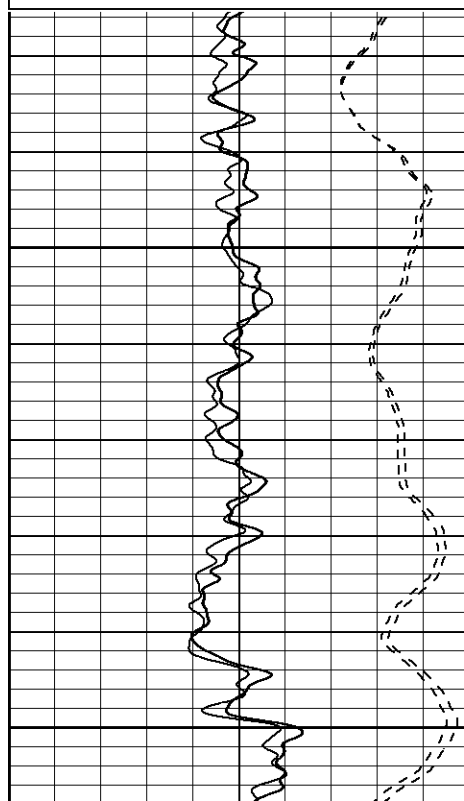
Black Lick, Pa.
Meroer, Pa.
Wooster, Oh.
Cleveland, Ok.
Trinidad, Co.

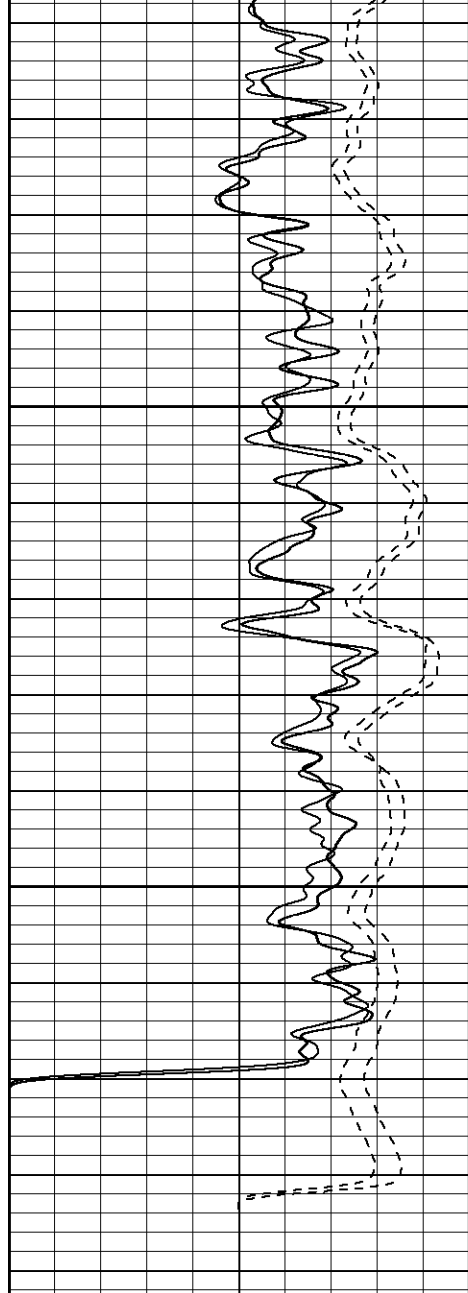
Repeat Section

Database File: xtoac3110.db
Dataset Pathname: ac/well/dil/pass1.1
Presentation Format: dil
Dataset Creation: Sun Mar 04 02:26:23 2007 by Calc Open-Cased 061129
Charted by: Depth in Feet scaled 1:240

0	GR (GAPI)	200
-100	SP (mV)	100
0	GR-repeat (GAPI)	200
-100	SP-repeat (mV)	100

0.2	RILM (Ohm-m)	2000
0.2	RILD (Ohm-m)	2000
0.2	RLL3 (Ohm-m)	2000
0.2	RLL3-repeat (Ohm-m)	2000
0.2	RILM-repeat (Ohm-m)	2000
0.2	RILD-repeat (Ohm-m)	2000

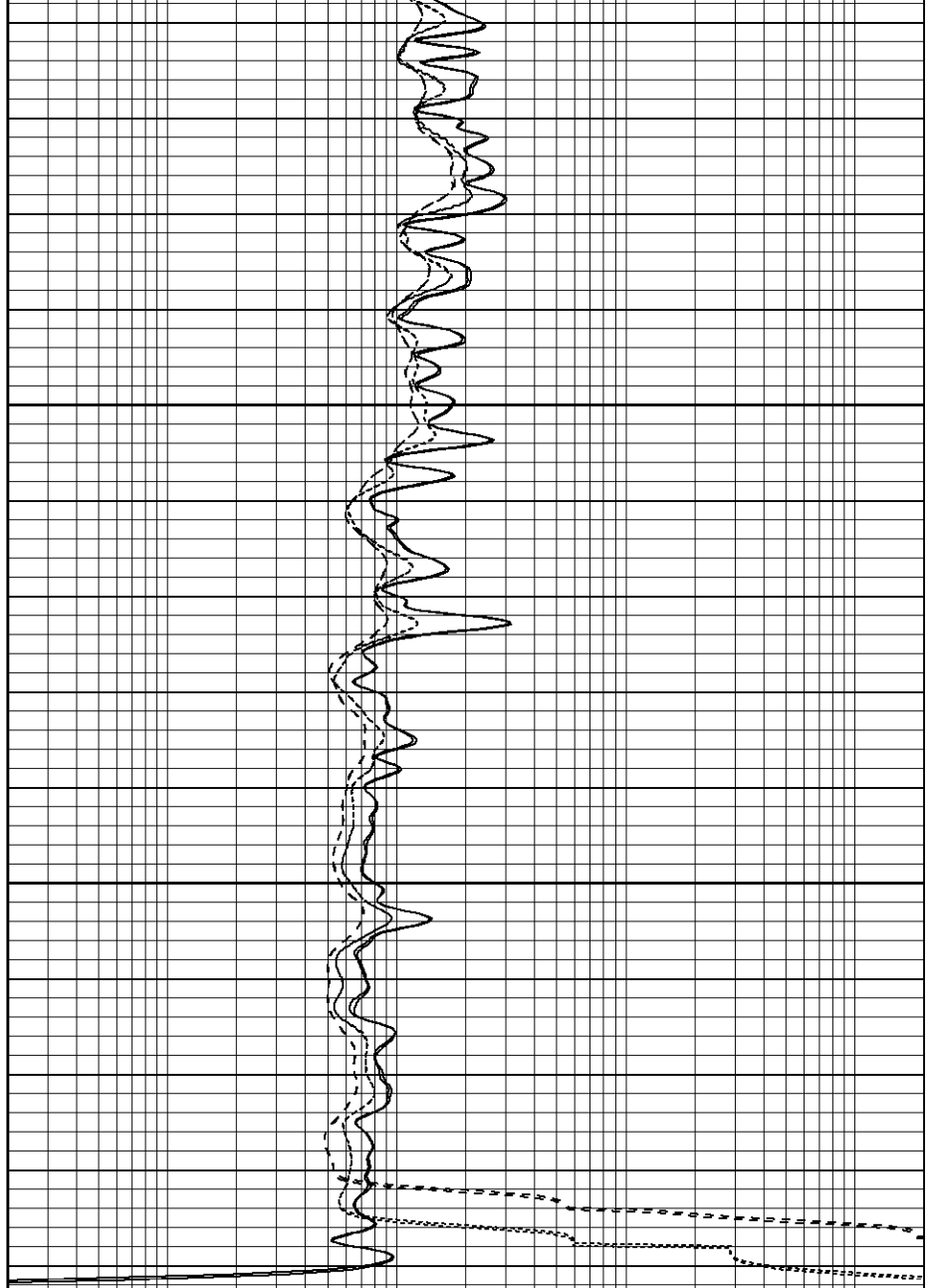




2150

2200

0	GR (GAPI)	200
-100	SP (mV)	100
0	GR-repeat (GAPI)	200
-100	SP-repeat (mV)	100



0.2	RILM (Ohm-m)	2000
0.2	RILD (Ohm-m)	2000
0.2	RLL3 (Ohm-m)	2000
0.2	RLL3-repeat (Ohm-m)	2000
0.2	RILM-repeat (Ohm-m)	2000
0.2	RILD-repeat (Ohm-m)	2000

Calibration Report

Database File: xtoac3110.db
 Dataset Pathname: ac/well/dil/pass2
 Dataset Creation: Sun Mar 04 00:20:12 2007 by Log Open-Cased 061129

Dual Induction Calibration Report

Serial-Model: 5375-G
 Surface Cal Performed: Fri Jan 19 08:02:09 2007
 Downhole Cal Performed: Sun Jan 21 14:02:19 2007

Surface Calibration

Readings

References

Results

