

CEMENT BOND LOG

Company XTO Energy Inc.

Well Apache Canyon 05-09V

Field	Purgatorie River
1	1
2	2
3	3
4	4
5	5
6	6
7	7
8	8
9	9
10	10
11	11
12	12
13	13
14	14
15	15
16	16
17	17
18	18
19	19
20	20
21	21
22	22
23	23
24	24
25	25
26	26
27	27
28	28
29	29
30	30
31	31
32	32
33	33
34	34
35	35
36	36
37	37
38	38
39	39
40	40
41	41
42	42
43	43
44	44
45	45
46	46
47	47
48	48
49	49
50	50
51	51
52	52
53	53
54	54
55	55
56	56
57	57
58	58
59	59
60	60
61	61
62	62
63	63
64	64
65	65
66	66
67	67
68	68
69	69
70	70
71	71
72	72
73	73
74	74
75	75
76	76
77	77
78	78
79	79
80	80
81	81
82	82
83	83
84	84
85	85
86	86
87	87
88	88
89	89
90	90
91	91
92	92
93	93
94	94
95	95
96	96
97	97
98	98
99	99
100	100

County Las Animas State CO

Location: API #: 05 071 09127 00

1879' FSL & 227' FEL

Pressure Control

SEC 5 TWP 34S RGE 67W

Permanent Datum	Ground Level	Elevation	7406
-----------------	--------------	-----------	------

Drilling Measured From Ground Level	G.L. 7406
1	1
2	2
3	3
4	4
5	5
6	6
7	7
8	8
9	9
10	10
11	11
12	12
13	13
14	14
15	15
16	16
17	17
18	18
19	19
20	20
21	21
22	22
23	23
24	24
25	25
26	26
27	27
28	28
29	29
30	30
31	31
32	32
33	33
34	34
35	35
36	36
37	37
38	38
39	39
40	40
41	41
42	42
43	43
44	44
45	45
46	46
47	47
48	48
49	49
50	50
51	51
52	52
53	53
54	54
55	55
56	56
57	57
58	58
59	59
60	60
61	61
62	62
63	63
64	64
65	65
66	66
67	67
68	68
69	69
70	70
71	71
72	72
73	73
74	74
75	75
76	76
77	77
78	78
79	79
80	80
81	81
82	82
83	83
84	84
85	85
86	86
87	87
88	88
89	89
90	90
91	91
92	92
93	93
94	94
95	95
96	96
97	97
98	98
99	99
100	100

Date _____

Ruin Number	One
0	0.0000
1	0.0000
2	0.0000
3	0.0000
4	0.0000
5	0.0000
6	0.0000
7	0.0000
8	0.0000
9	0.0000
10	0.0000
11	0.0000
12	0.0000
13	0.0000
14	0.0000
15	0.0000
16	0.0000
17	0.0000
18	0.0000
19	0.0000
20	0.0000
21	0.0000
22	0.0000
23	0.0000
24	0.0000
25	0.0000
26	0.0000
27	0.0000
28	0.0000
29	0.0000
30	0.0000
31	0.0000
32	0.0000
33	0.0000
34	0.0000
35	0.0000
36	0.0000
37	0.0000
38	0.0000
39	0.0000
40	0.0000
41	0.0000
42	0.0000
43	0.0000
44	0.0000
45	0.0000
46	0.0000
47	0.0000
48	0.0000
49	0.0000
50	0.0000
51	0.0000
52	0.0000
53	0.0000
54	0.0000
55	0.0000
56	0.0000
57	0.0000
58	0.0000
59	0.0000
60	0.0000
61	0.0000
62	0.0000
63	0.0000
64	0.0000
65	0.0000
66	0.0000
67	0.0000
68	0.0000
69	0.0000
70	0.0000
71	0.0000
72	0.0000
73	0.0000
74	0.0000
75	0.0000
76	0.0000
77	0.0000
78	0.0000
79	0.0000
80	0.0000
81	0.0000
82	0.0000
83	0.0000
84	0.0000
85	0.0000
86	0.0000
87	0.0000
88	0.0000
89	0.0000
90	0.0000
91	0.0000
92	0.0000
93	0.0000
94	0.0000
95	0.0000
96	0.0000
97	0.0000
98	0.0000
99	0.0000

Depth Logger	1918'
--------------	-------

Bottom Logged Interval	1914'
------------------------	-------

Open Hole Size	7 7/8
----------------	-------

Type Fluid	Water
------------	-------

Max. Recorded Temp.	100°F
---------------------	-------

Estimated Cement Top	38'
----------------------	-----

Time Well Ready	ROA
1	0.000
2	0.000
3	0.000
4	0.000
5	0.000
6	0.000
7	0.000
8	0.000
9	0.000
10	0.000
11	0.000
12	0.000
13	0.000
14	0.000
15	0.000
16	0.000
17	0.000
18	0.000
19	0.000
20	0.000
21	0.000
22	0.000
23	0.000
24	0.000
25	0.000
26	0.000
27	0.000
28	0.000
29	0.000
30	0.000
31	0.000
32	0.000
33	0.000
34	0.000
35	0.000
36	0.000
37	0.000
38	0.000
39	0.000
40	0.000
41	0.000
42	0.000
43	0.000
44	0.000
45	0.000
46	0.000
47	0.000
48	0.000
49	0.000
50	0.000
51	0.000
52	0.000
53	0.000
54	0.000
55	0.000
56	0.000
57	0.000
58	0.000
59	0.000
60	0.000
61	0.000
62	0.000
63	0.000
64	0.000
65	0.000
66	0.000
67	0.000
68	0.000
69	0.000
70	0.000
71	0.000
72	0.000
73	0.000
74	0.000
75	0.000
76	0.000
77	0.000
78	0.000
79	0.000
80	0.000
81	0.000
82	0.000
83	0.000
84	0.000
85	0.000
86	0.000
87	0.000
88	0.000
89	0.000
90	0.000
91	0.000
92	0.000
93	0.000
94	0.000
95	0.000
96	0.000
97	0.000
98	0.000
99	0.000
100	0.000

Time Logger on Bottom	8:30AM
Equipment Number	T0693

Location	Trinidad
----------	----------

Recorded By	J. Sissel
Reviewed By	Mr. Tracy

Witnessed by	MI Ilay
--------------	---------

Borehole Record

Run Number	Bit	From	To
------------	-----	------	----

--	--	--	--	--

Casing Record	Size	

Surface String	80 5/8"
----------------	---------

Production String	5.5"
-------------------	------

Liner		
-------	--	--

<<< Fold Here >>>

All interpretations are opinions based on inferences from electrical or other measurements and we cannot and do not guarantee the accuracy or correctness of any interpretation, and we shall not, except in the case of gross or willful negligence on our part, be liable or responsible for any loss, costs, damages, or expenses incurred or sustained by anyone resulting from any interpretation made by any of our officers, agents or employees. These interpretations are also subject to our general terms and conditions set out in our current Price Schedule.

Comments

Lower Bosque Entrance, first right to Alamosito Canyon, go through gate, turn right at windmill, first left to location, well is farthest from entrance

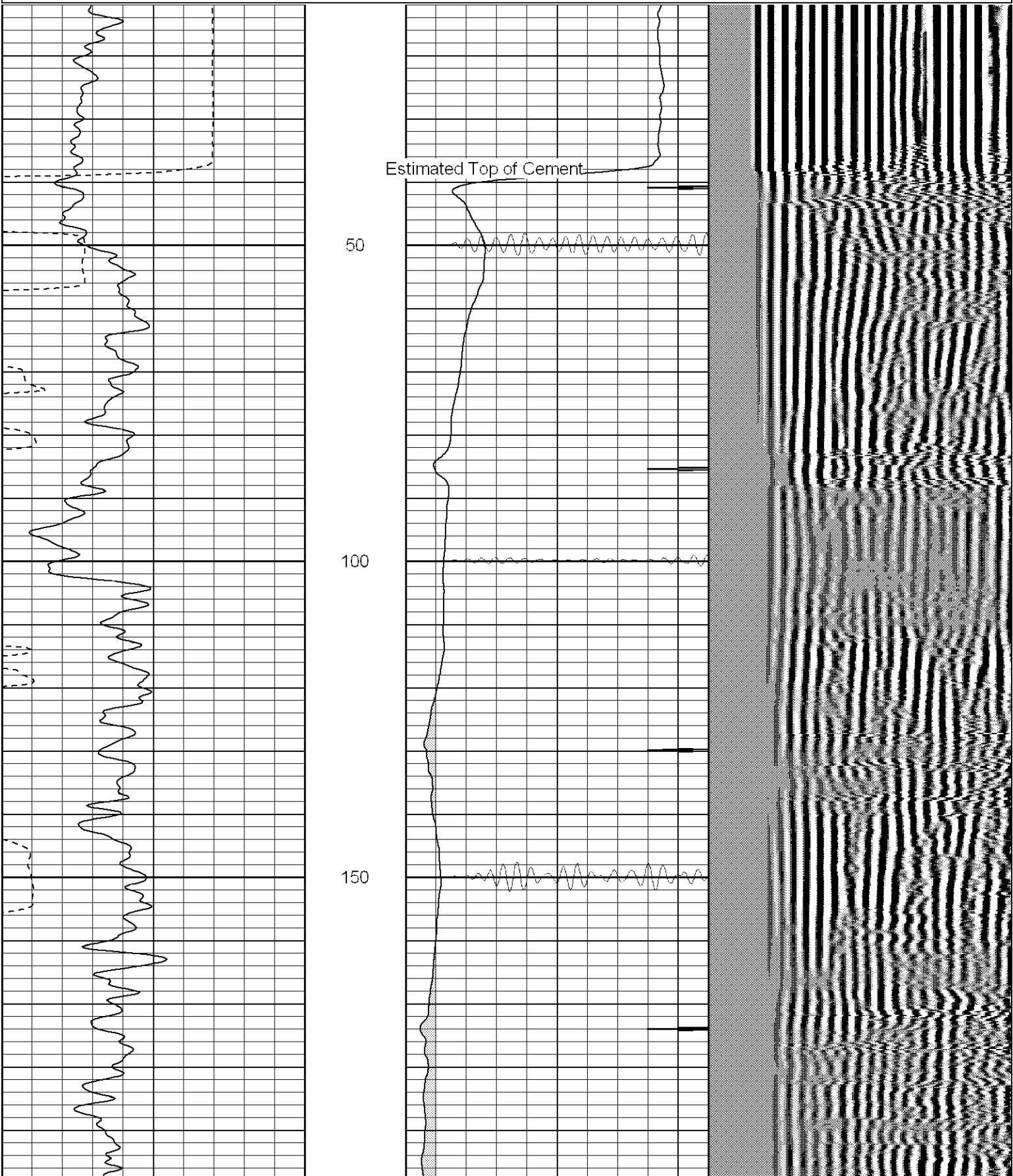


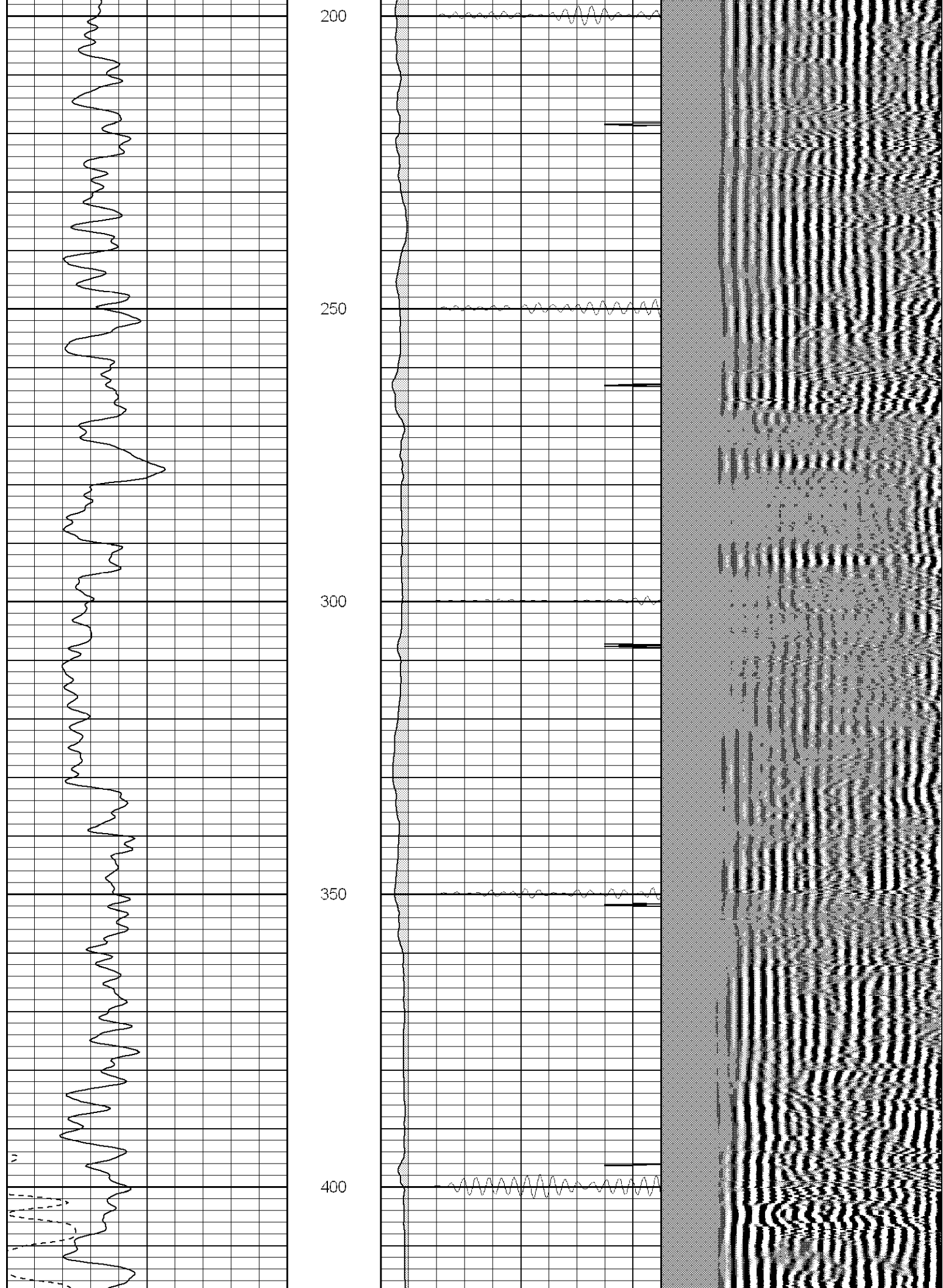
Black Lick, Pa.
Mercer, Pa.
Wooster, Oh.
Cleveland, Ok.
Trinidad, Co.

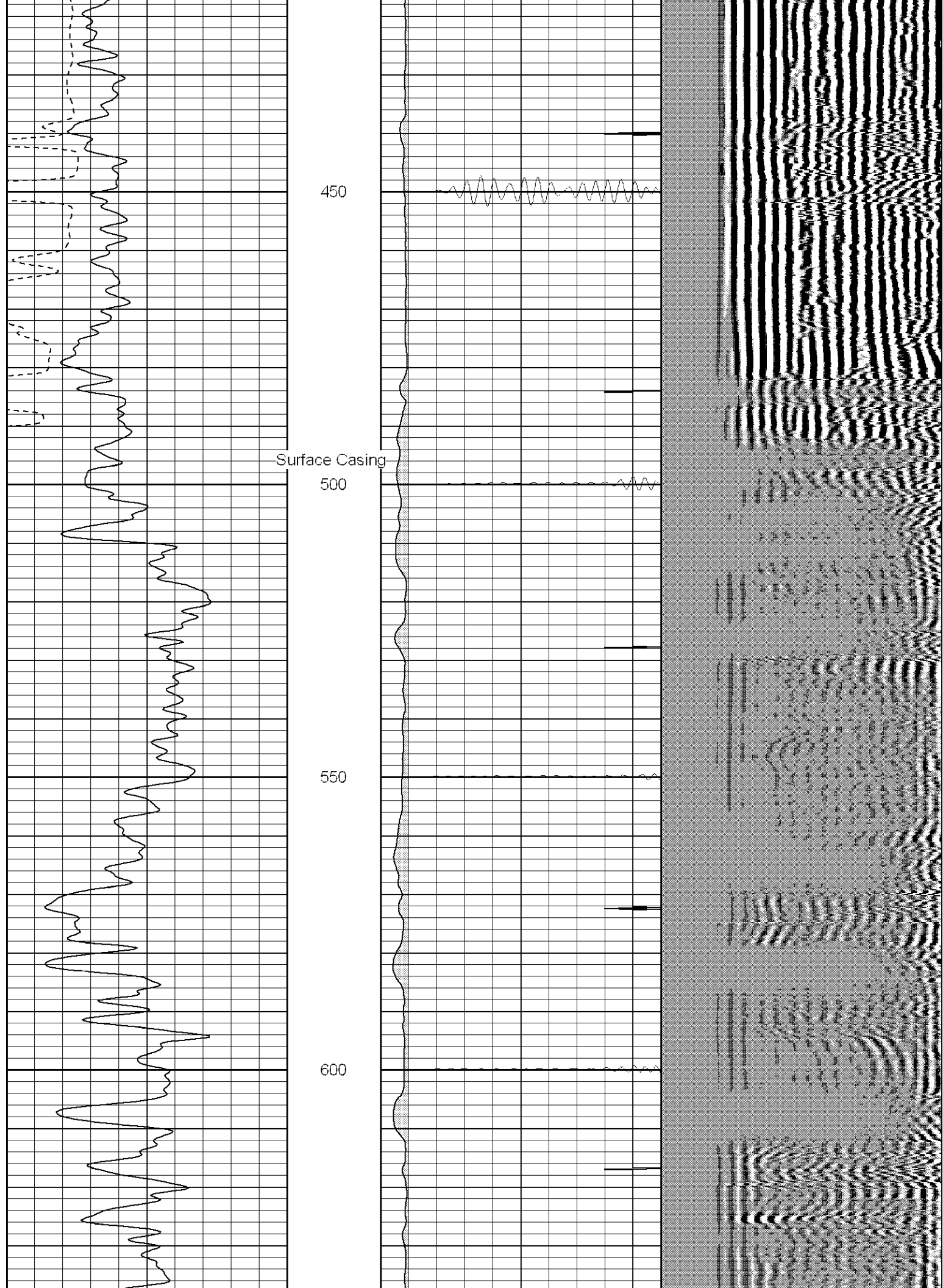
Main Pass (1000PSI)

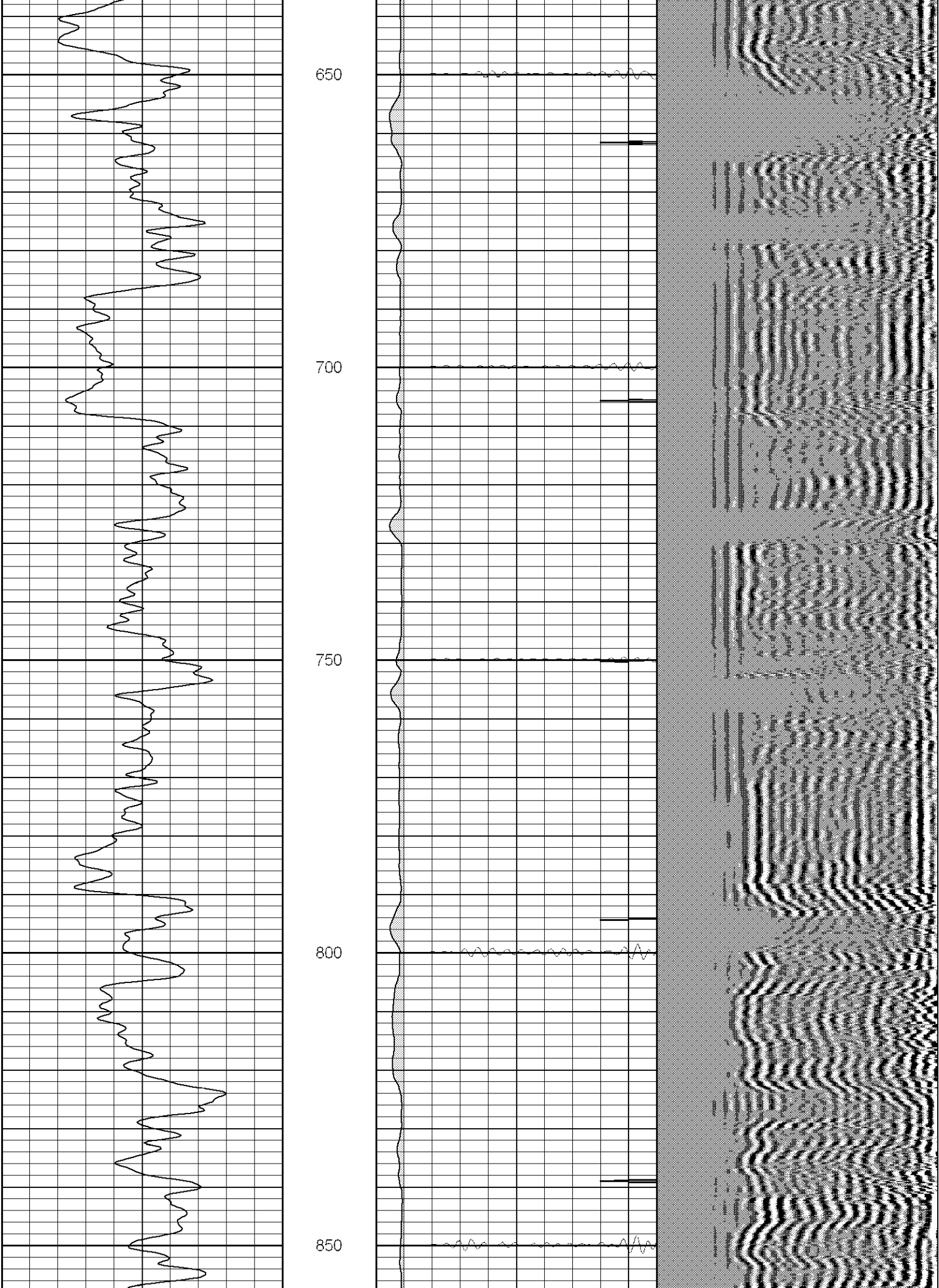
Database File: ac0509v72507b.db
Dataset Pathname: pass2.1
Presentation Format: cblrt
Dataset Creation: Wed Jul 25 09:41:03 2007 by Calc Open-Cased 070508
Charted by: Depth in Feet scaled 1:240

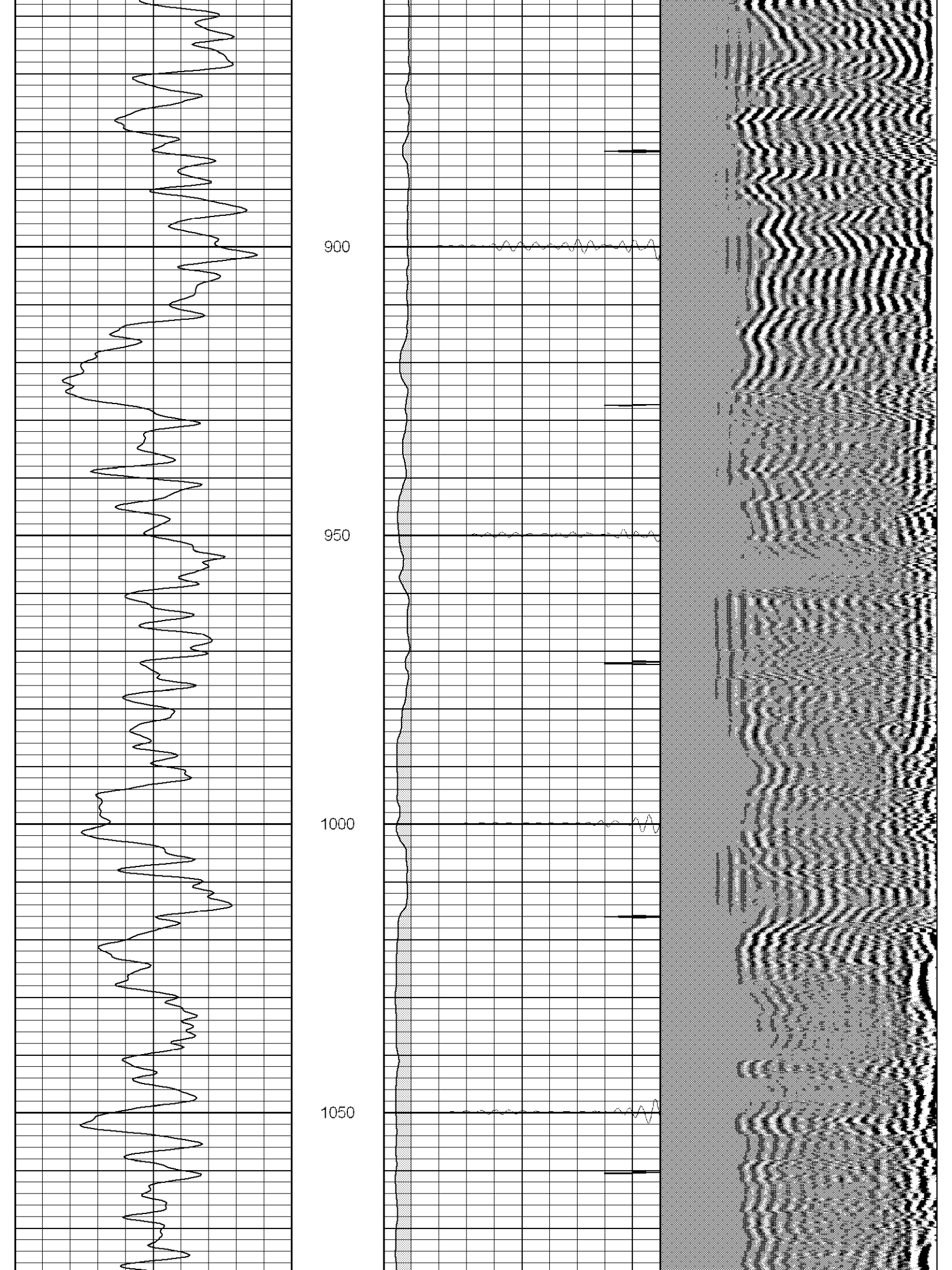
0	GR (GAPI)	200	0	AMP3 (mV)	100	200	Variable Density	1200
400	TT3 (usec)	200	18	CCL	-2			
-----			200	CBL5	1200			

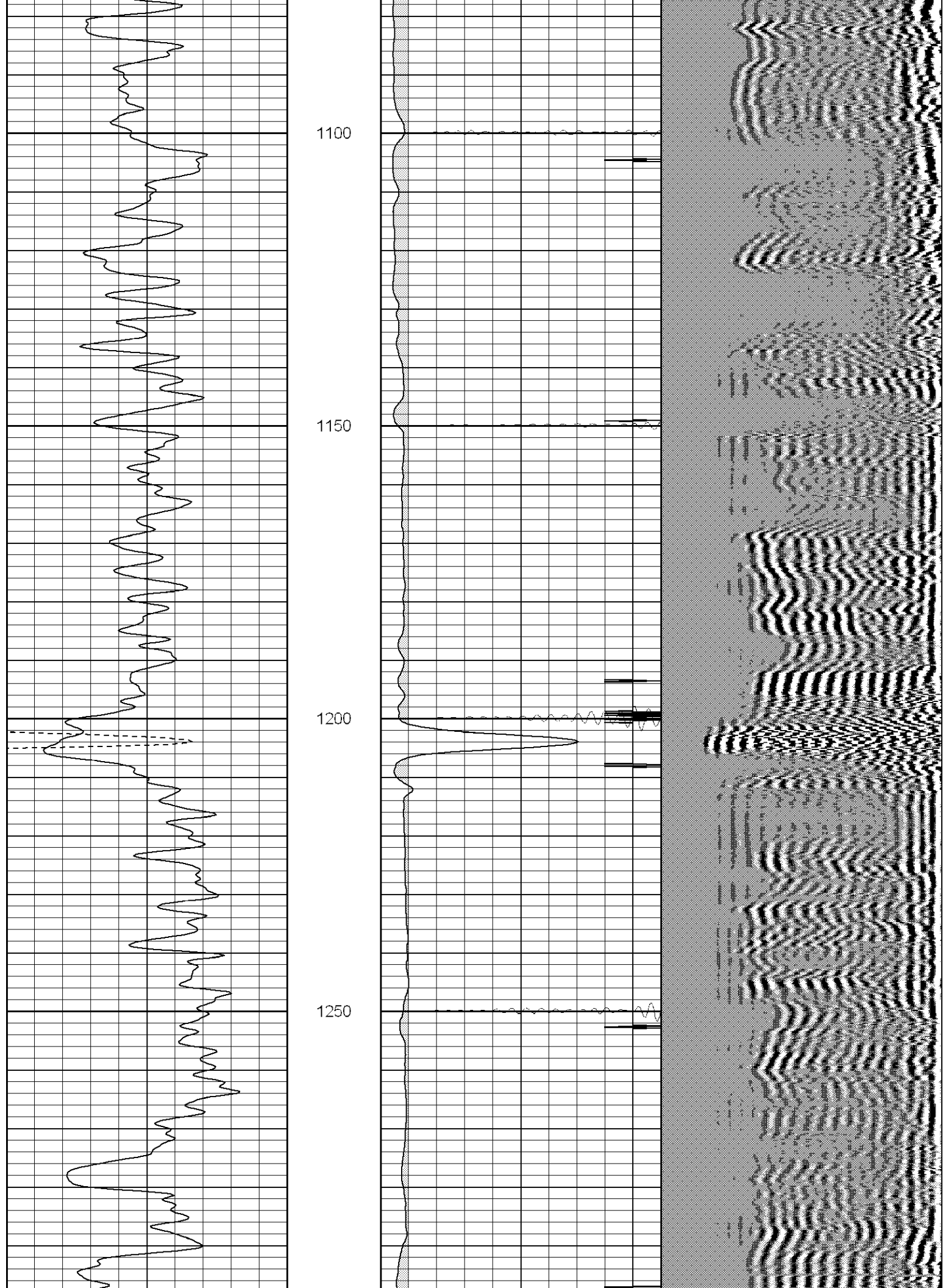


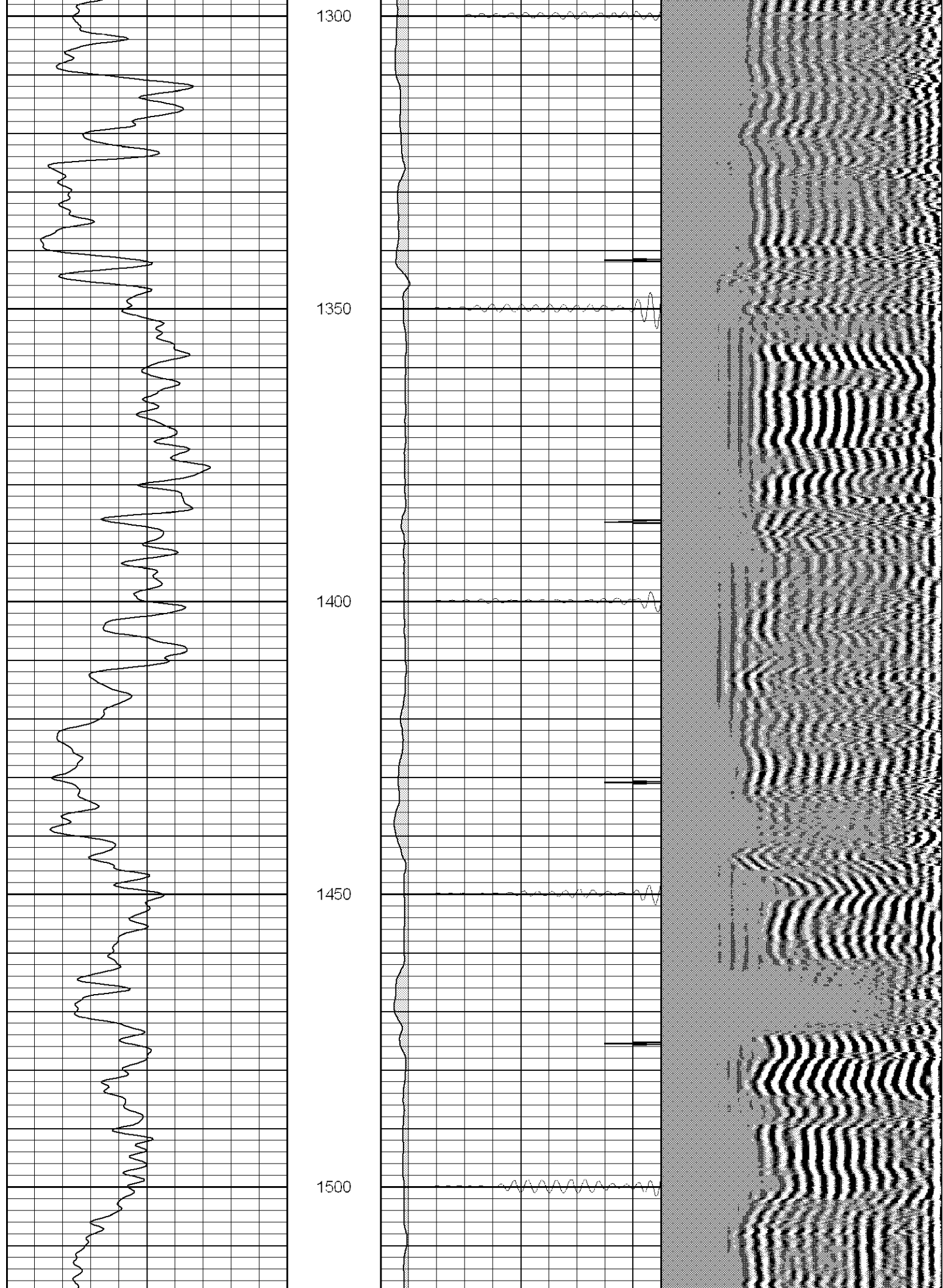


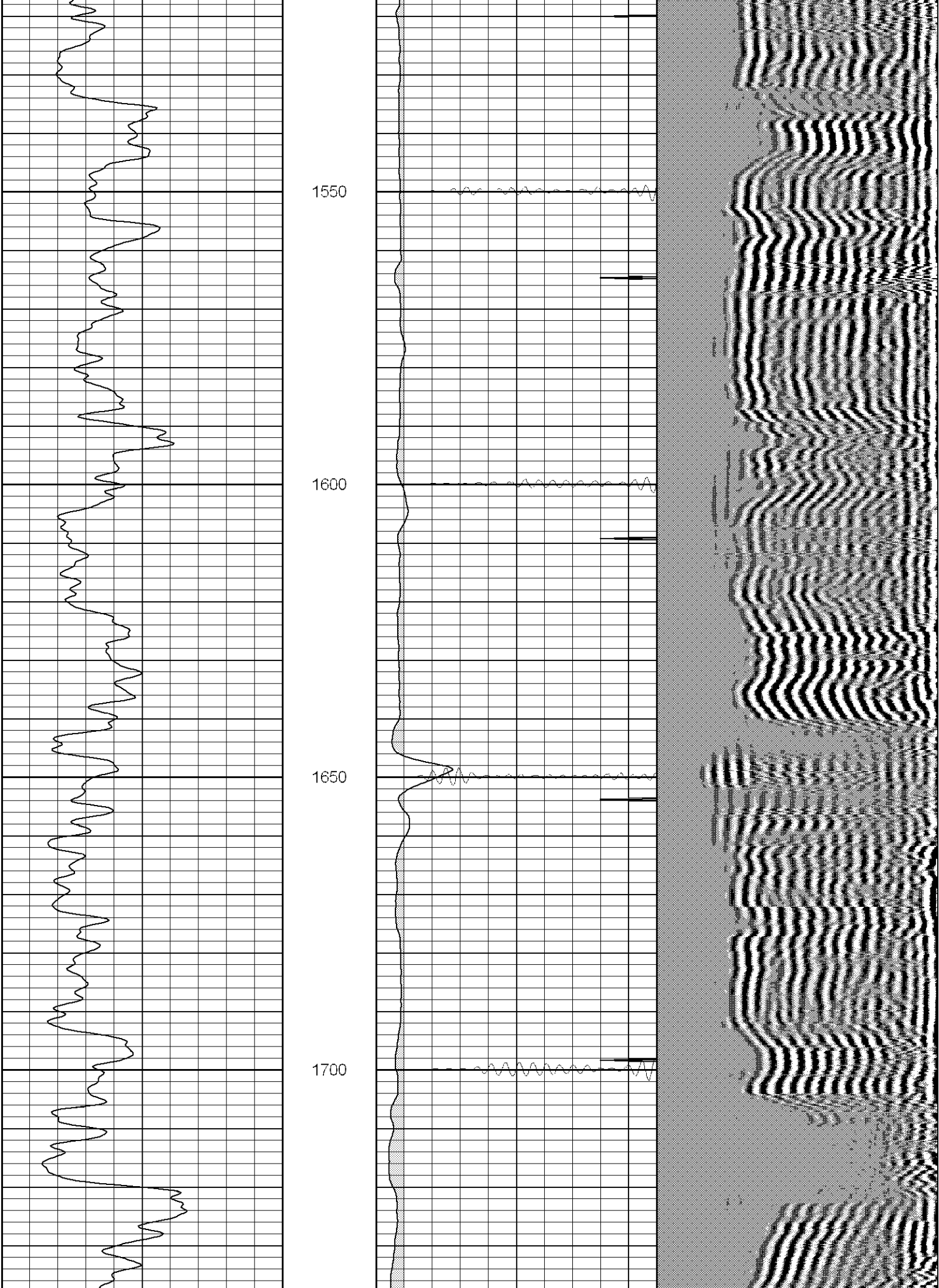


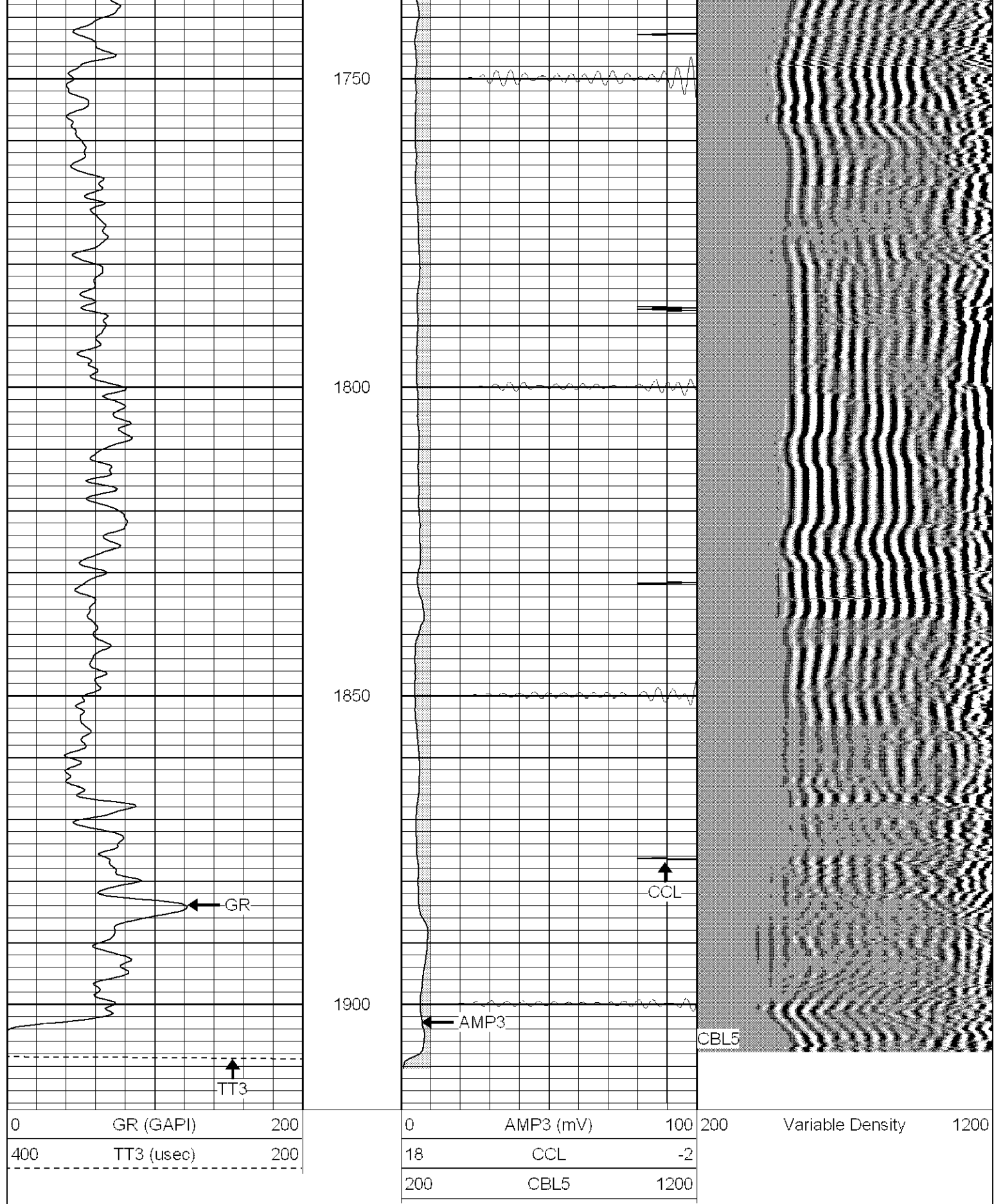












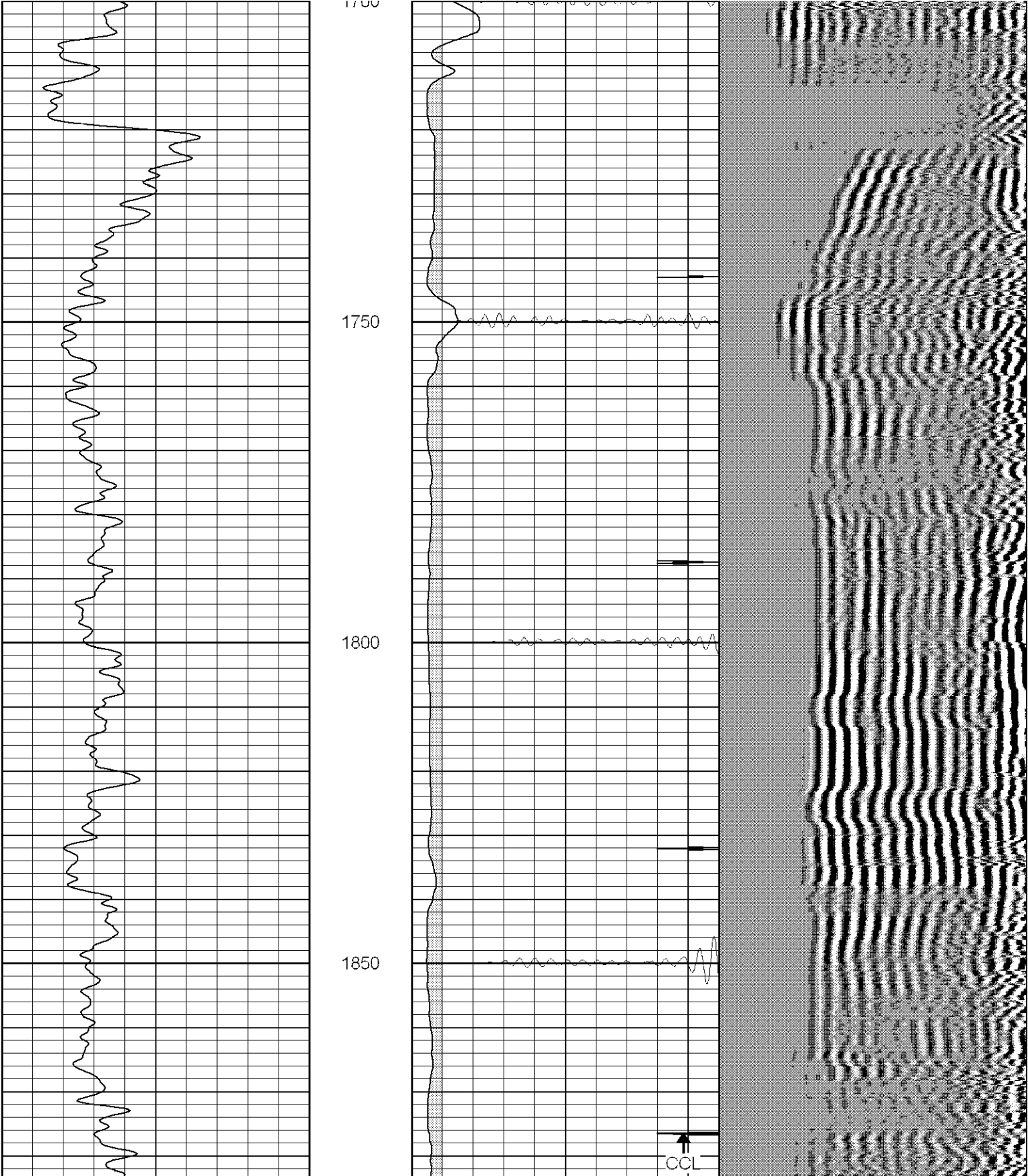
SUPERIOR

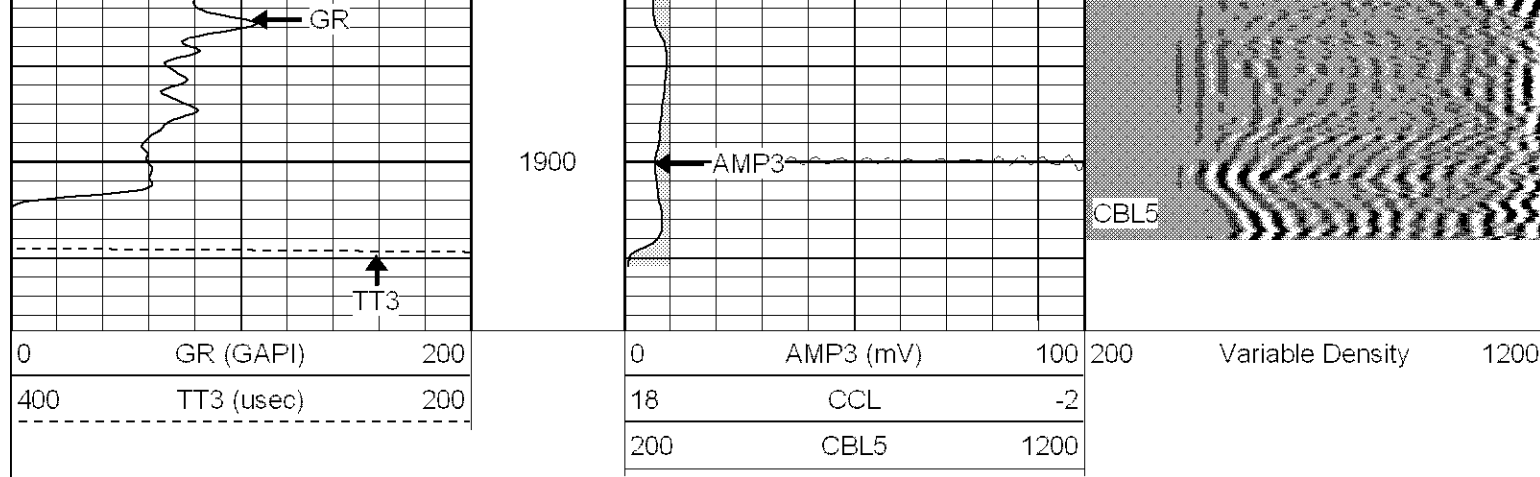
Black Lick, Pa.
 Mercer, Pa.
 Wooster, Oh.
 Cleveland, Ok.
 Trinidad, Co.

Repeat Section (0PSI)

Database File: ac0509v72507b.db
Dataset Pathname: pass1.1
Presentation Format: cblrt
Dataset Creation: Wed Jul 25 09:43:36 2007 by Calc Open-Cased 070508
Charted by: Depth in Feet scaled 1:240

0	GR (GAPI)	200	0	AMP3 (mV)	100	200	Variable Density	1200
400	TT3 (usec)	200	18	CCL	-2			
-----			200	CBL5	1200			





Calibration Report

Database File: ac0509v72507b.db
Dataset Pathname: pass1
Dataset Creation: Wed Jul 25 08:42:03 2007 by Log Open-Cased 070508

Cement Bond Log Calibration Report

Serial Number: Titan6
Tool Model: T6
Performed: Wed Jul 25 07:44:36 2007

Depth: 734.977 ft
Casing Diameter: 5.5 in

3' Spacing 5' Spacing

Signal Zero: 0 0 mV
Calibrated Amplitude: 85 85 mV
Reading at Signal Zero: 0.0194092 0.0207275 V
Reading in Free Pipe: 1 2 V

Gain: 86.6824 42.9451
Offset: 1 -0.890144

Gamma Ray Calibration Report

Serial Number: Titan6
Tool Model: T6
Performed: Wed Jul 25 07:44:20 2007

Calibrator Value: 1.0 GAPI

Background Reading: 0.0 cps
Calibrator Reading: 1.0 cps

Sensitivity: 1.0000 GAPI/cps

Sensor	Offset (ft)	Schematic	Description	Len (ft)	OD (in)	Wt (lb)
GR	13.64		CHD-None (0)	0.75	1.50	5.00
			GR-T6 (Titan6)	2.52	2.25	25.00
WVF5	9.49		CBL-T6 (Titan6) Titan 6	7.23	2.44	110.00
WVF3	8.49					

