



SUPERIOR
Black Lick, Pa.
Mercer, Pa.
Wooster, Oh.
Cleveland, Ok.
Trinidad, Co.

DUAL INDUCTION LOG

Company XTO Energy Inc.
Well Hill Ranch 25-16
Field Purgatoire River
County Las Animas State Colorado

Location: API # : 05 071 09301 00

696' FSL & 571' FEL

SEC 25 TWP 34S RGE 67W

Permanent Datum Ground Level Elevation 7751'
Log Measured From Ground Level
Drilling Measured From Ground Level

Other Services
CDL
NEUTRON
Elevation
K.B. -----
D.F. -----
G.L. 7751'

Date 8-30-07

Run Number One

Depth Driller 2450'

Depth Logger 2451'

Bottom Logged Interval 2449'

Top Log Interval Surface Casing

Casing Driller 8 5/8" @ 485'

Casing Logger 484'

Bit Size 7 7/8"

Type Fluid in Hole Water

Density / Viscosity ///

pH / Fluid Loss ///

Source of Sample ///

Rm @ Meas. Temp ///

Rmf @ Meas. Temp ///

Rmc @ Meas. Temp ///

Source of Rmf / Rmc ///

Rm @ BHT ///

Time Circulation Stopped 10:30 A.M.

Time Logger on Bottom 12:30 P.M.

Maximum Recorded Temperature 104 DEG F

Equipment Number T697

Location Trinidad

Recorded By M. Norton

Witnessed By Mr. Don Johnson

<<< Fold Here >>>

All interpretations are opinions based on inferences from electrical or other measurements and we cannot and do not guarantee the accuracy or correctness of any interpretation, and we shall not, except in the case of gross or willful negligence on our part, be liable or responsible for any loss, costs, damages, or expenses incurred or sustained by anyone resulting from any interpretation made by any of our officers, agents or employees. These interpretations are also subject to our general terms and conditions set out in our current Price Schedule.

Comments

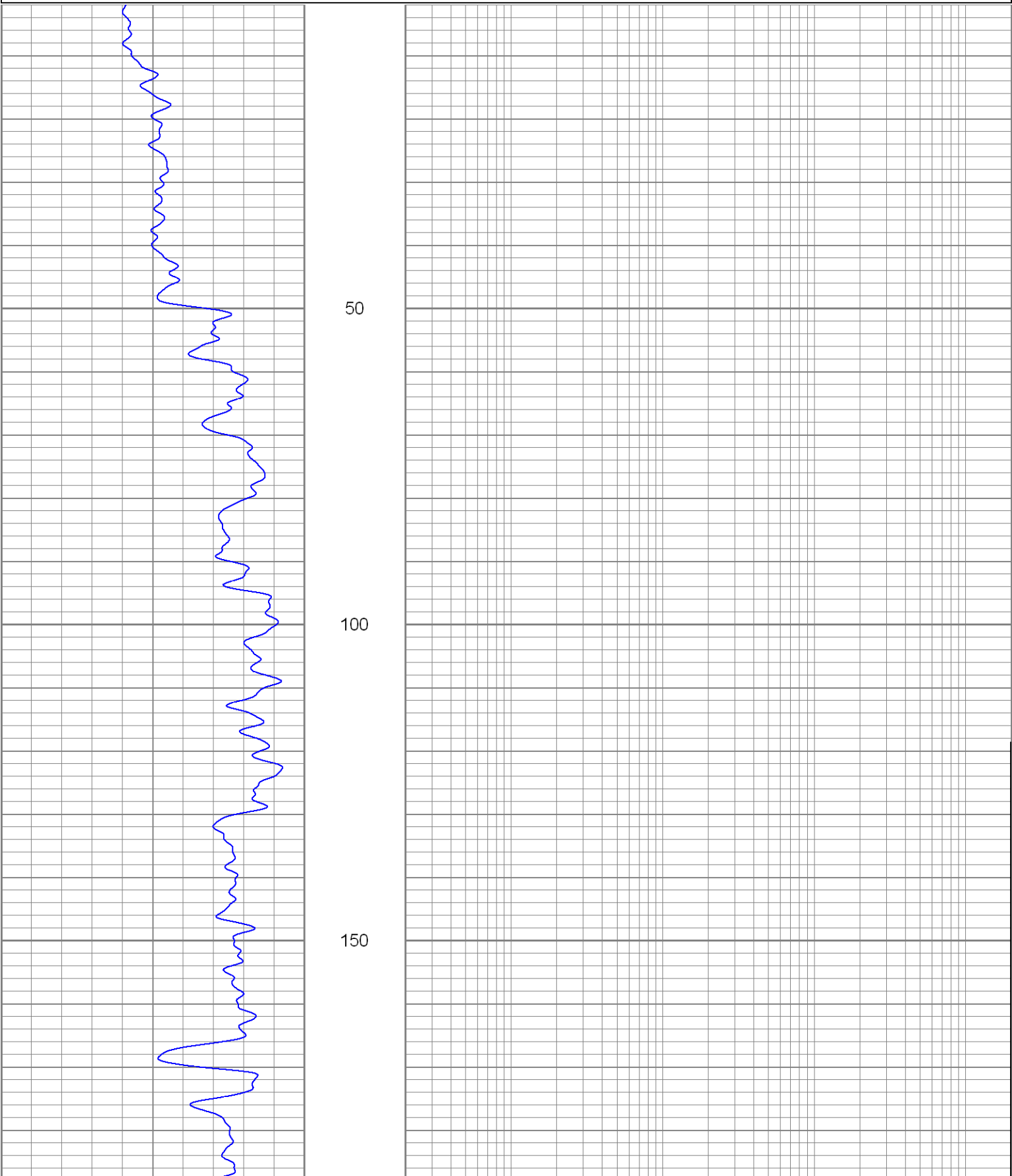
Well Directions:
Lorencito to XTO hill, third right to location.

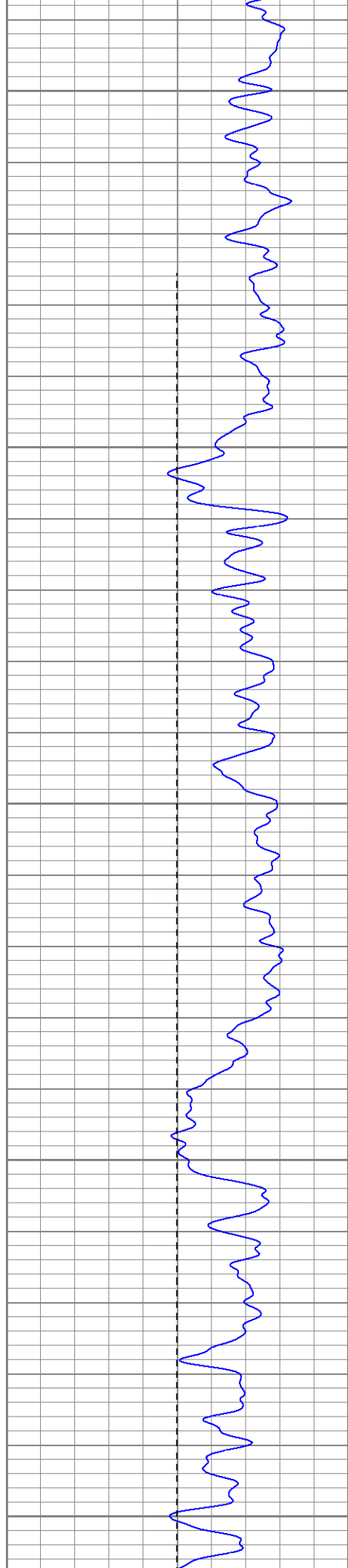


SUPERIOR
Black Lick, Pa.
Mercer, Pa.
Wooster, Oh.
Cleveland, Ok.
Trinidad, Co.

Main Pass

0	GR (GAPI)	200	0.2	RILM (Ohm-m)	2000
-100	SP (mV)	100	0.2	RILD (Ohm-m)	2000
			0.2	RLL3 (Ohm-m)	2000





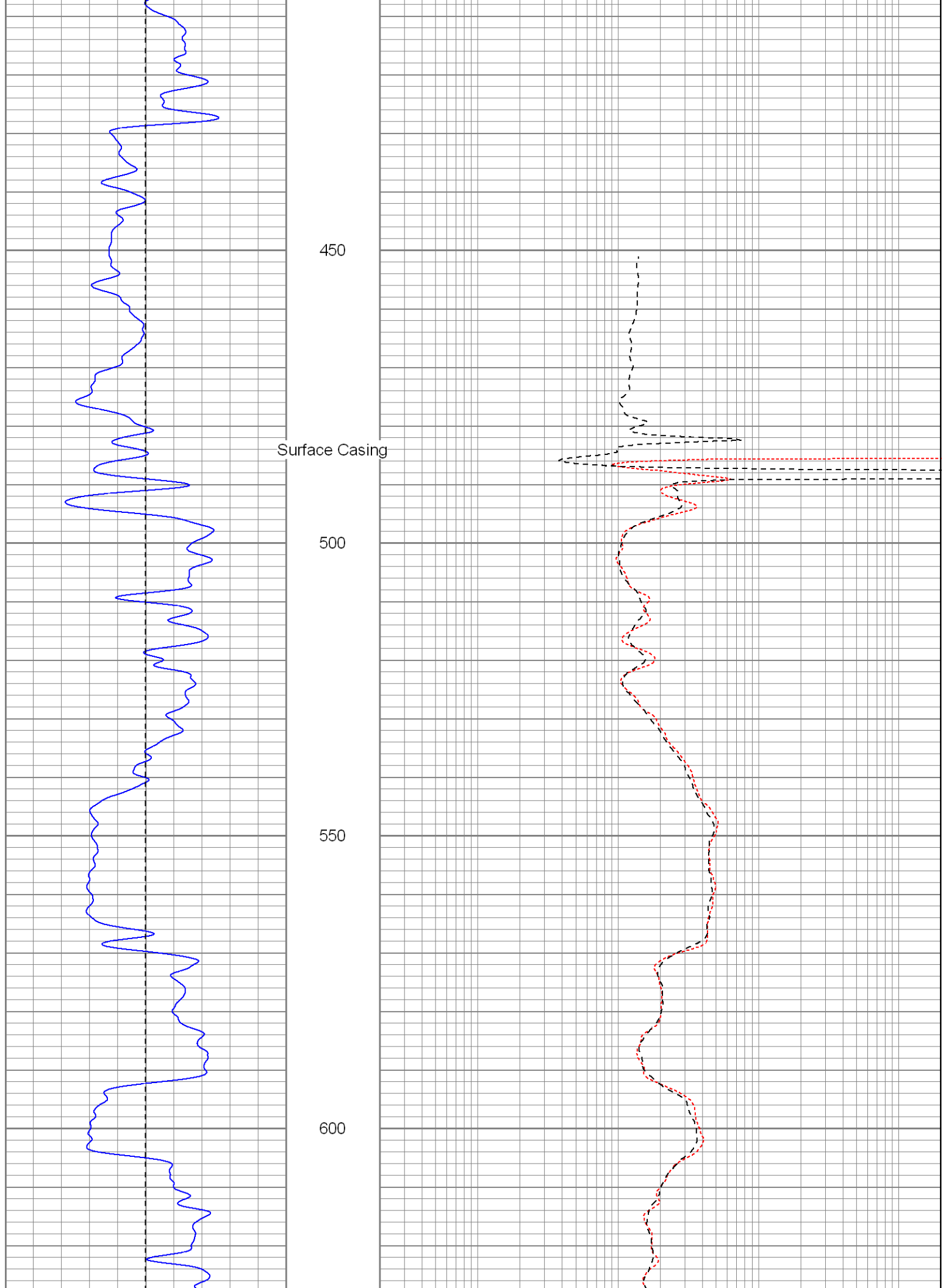
200

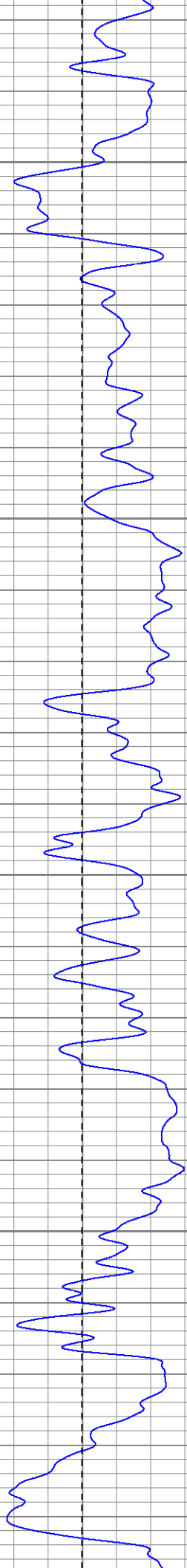
250

300

350

400



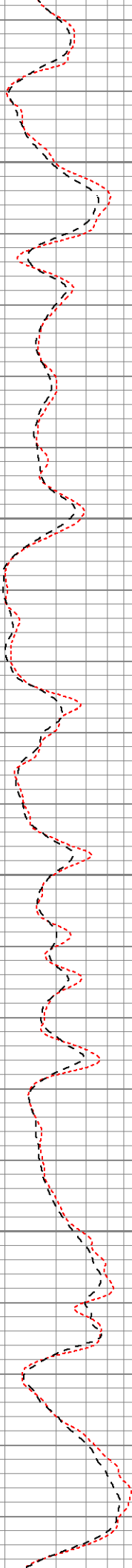


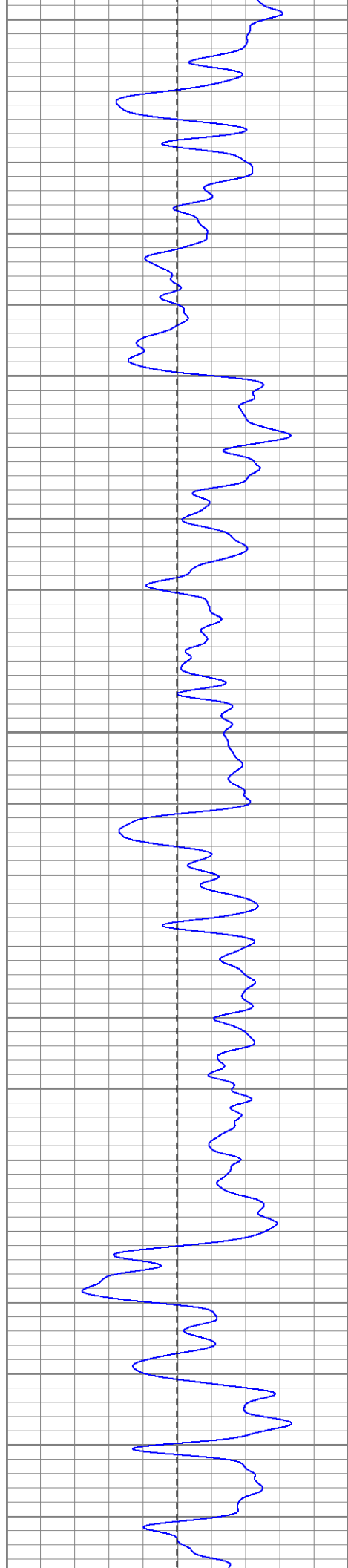
650

700

750

800





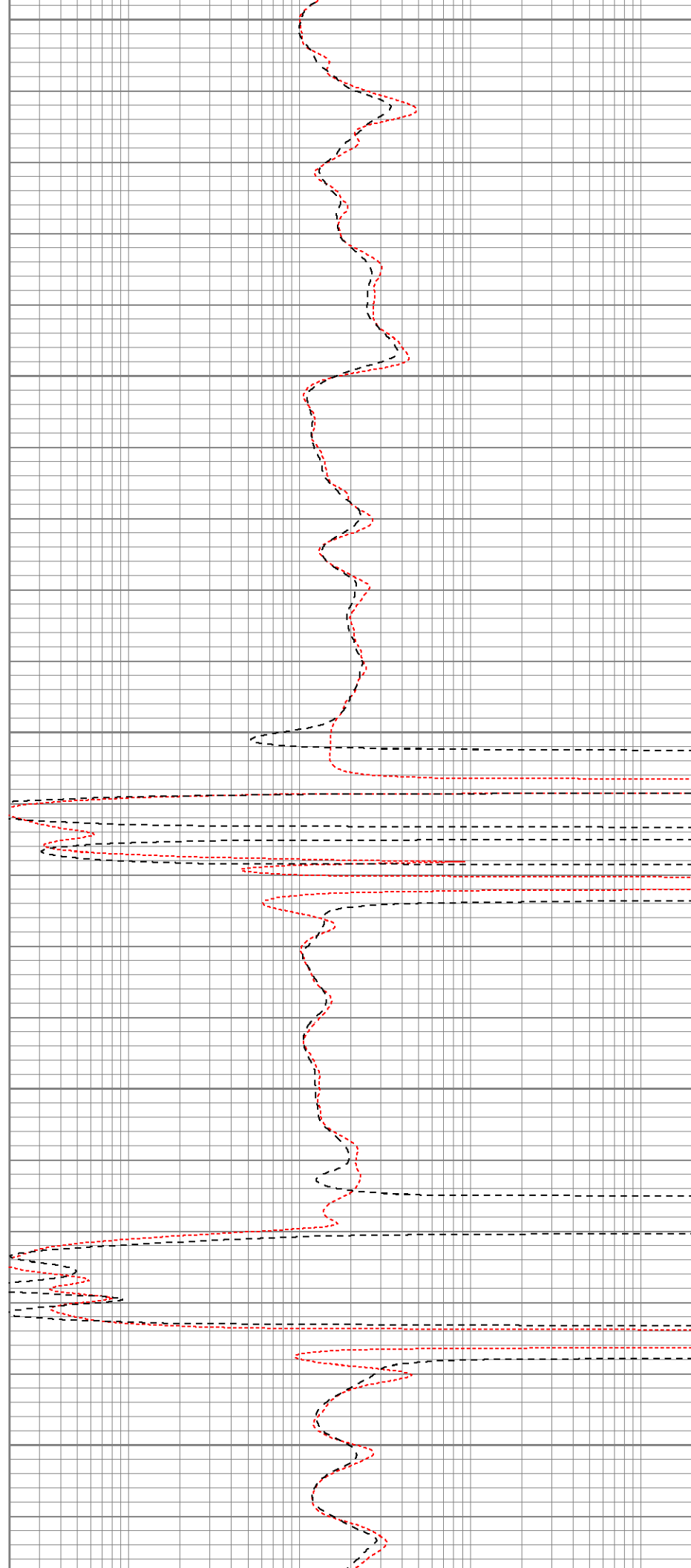
850

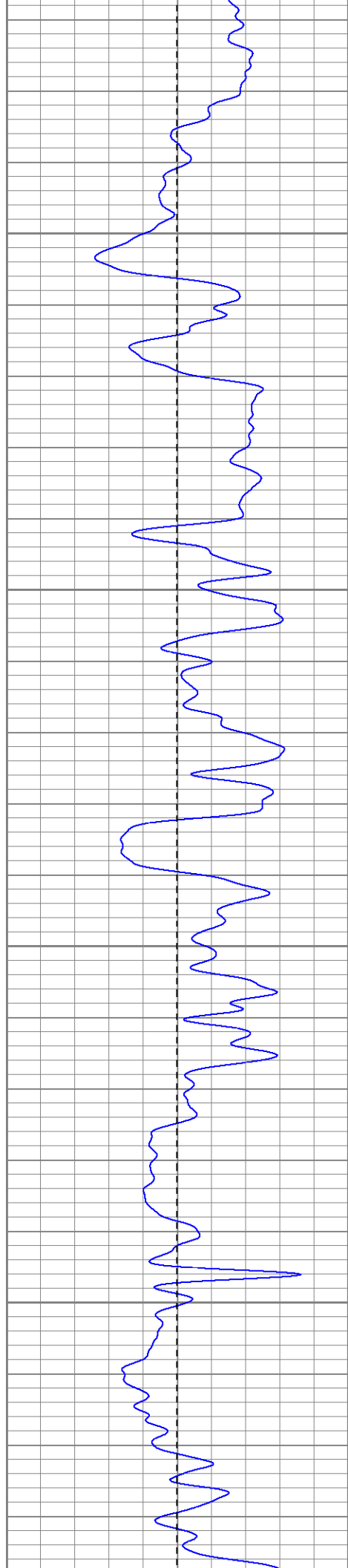
900

950

1000

1050



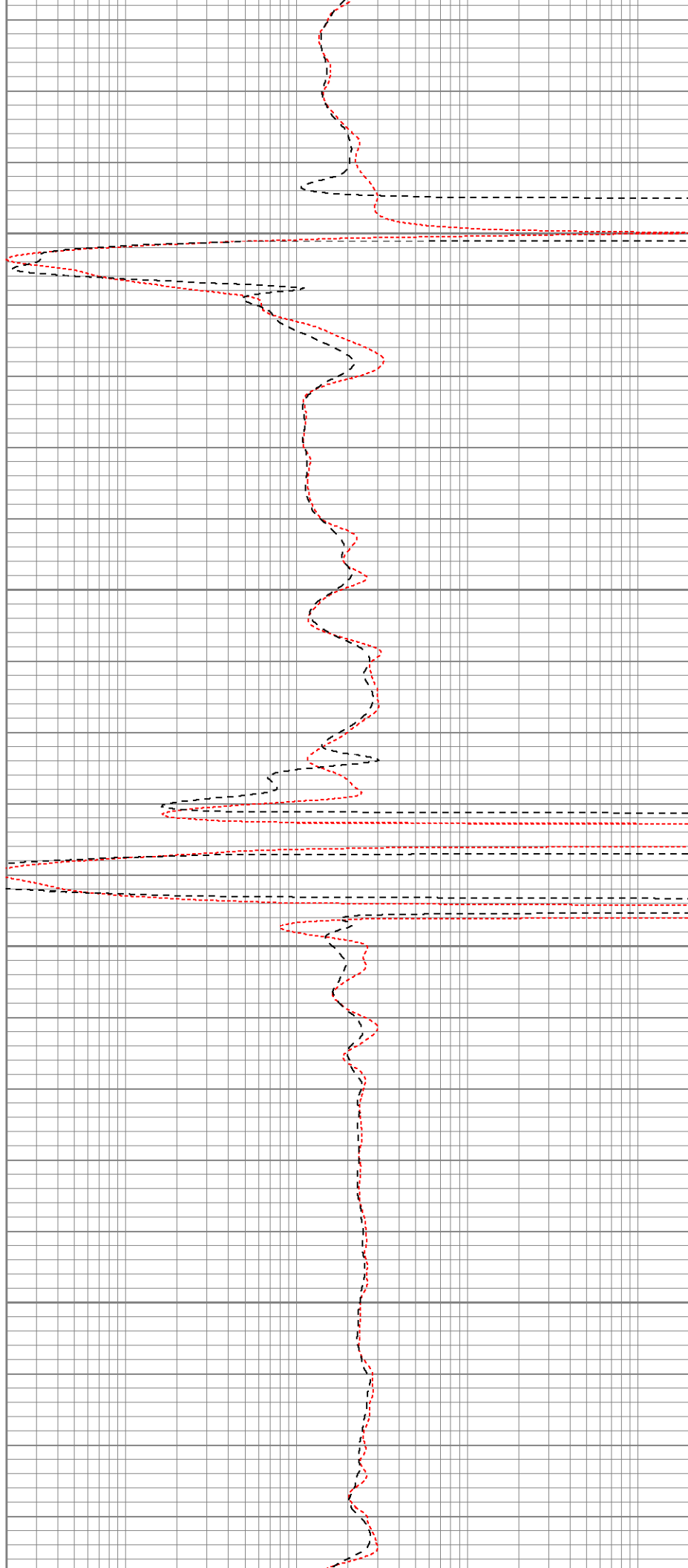


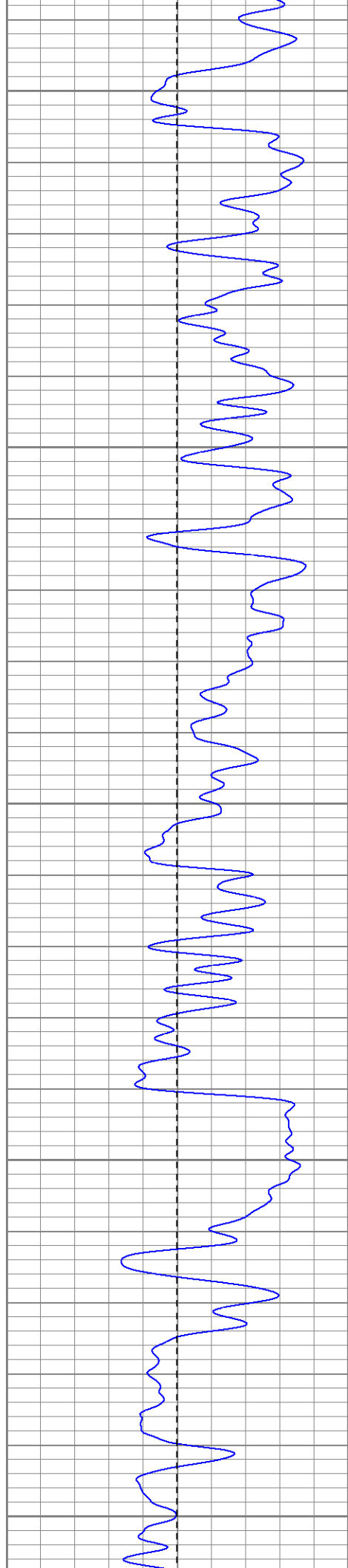
1100

1150

1200

1250





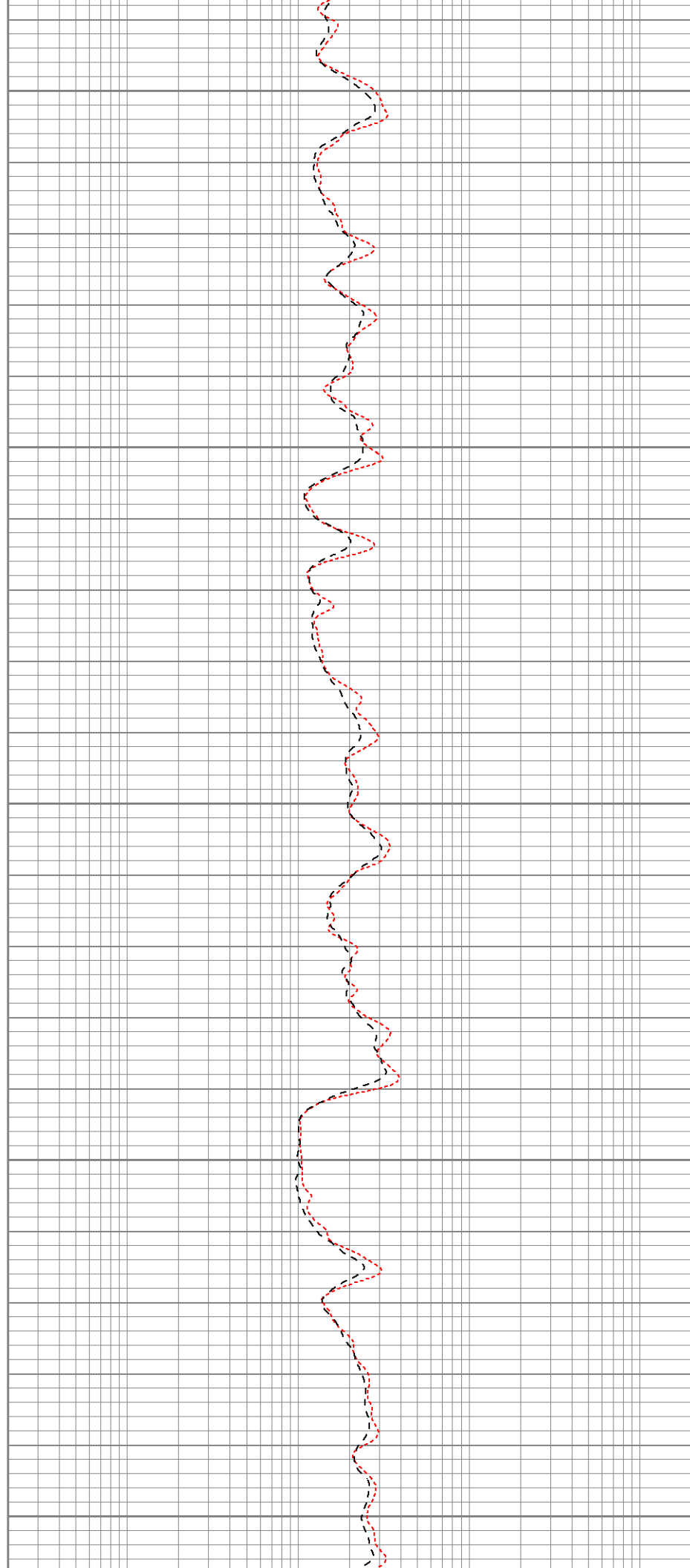
1300

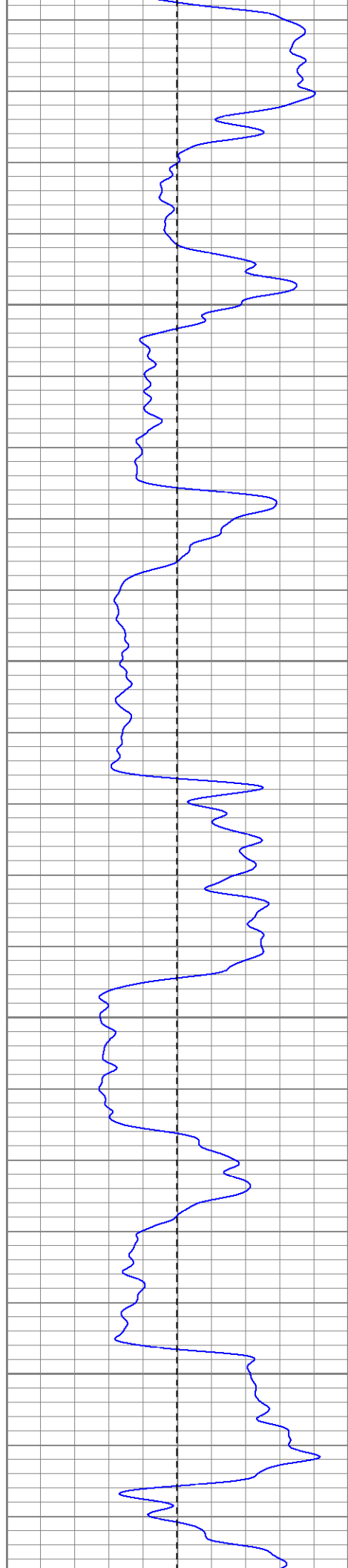
1350

1400

1450

1500



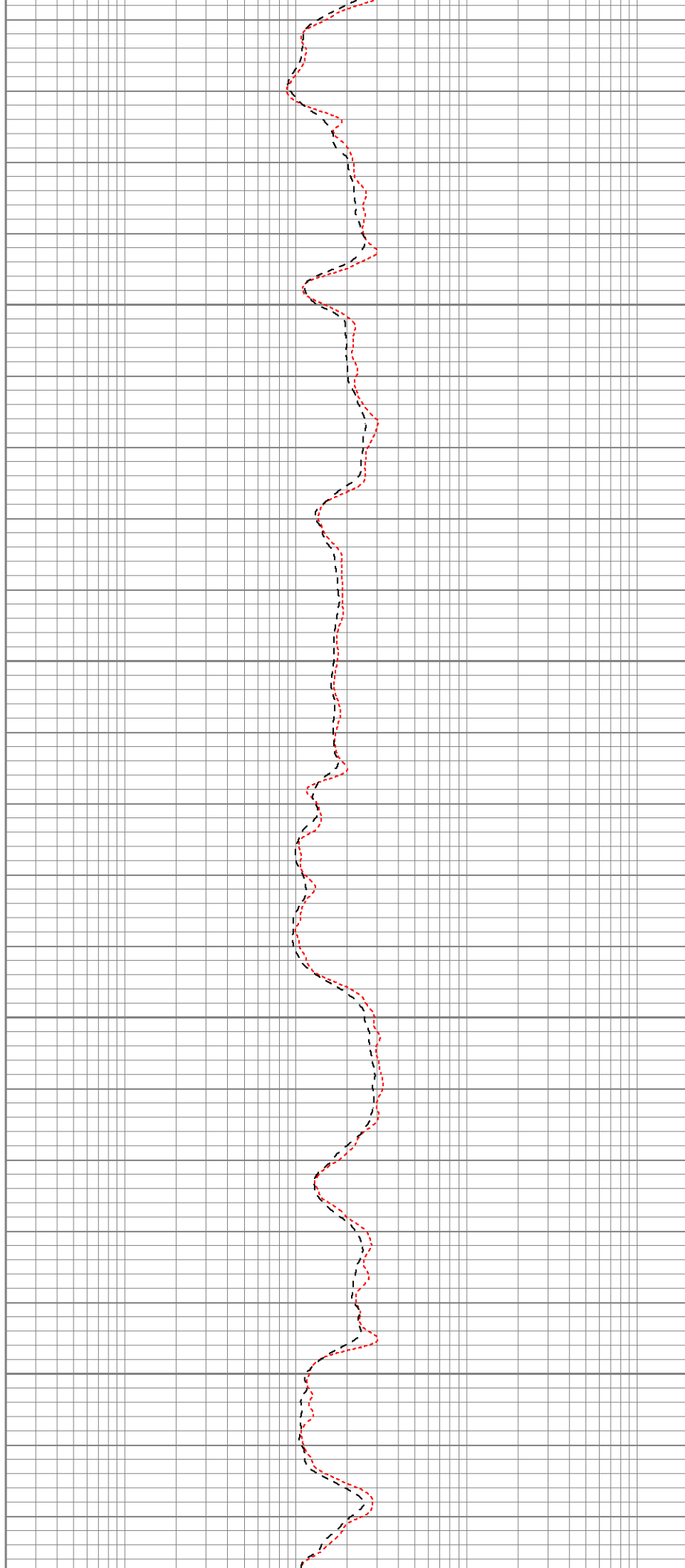


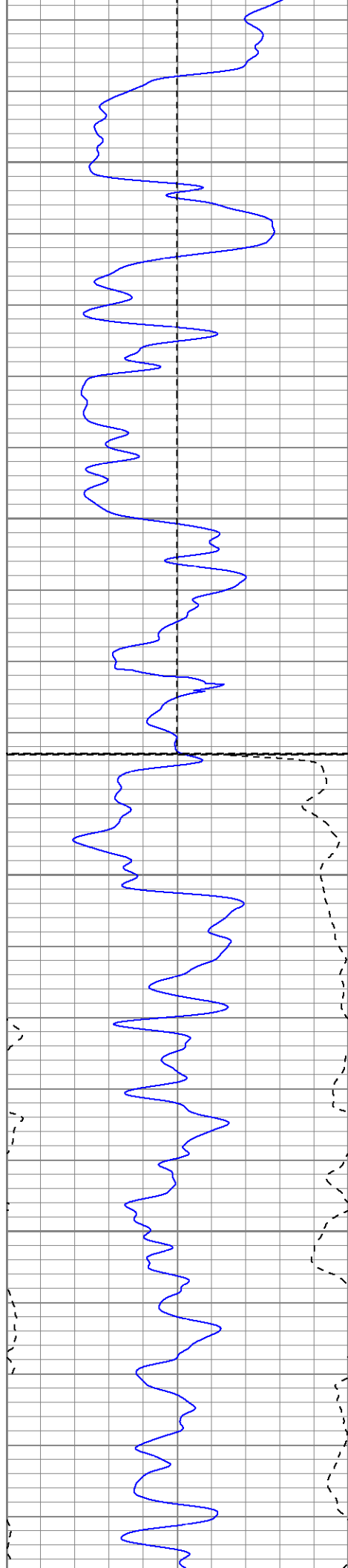
1550

1600

1650

1700





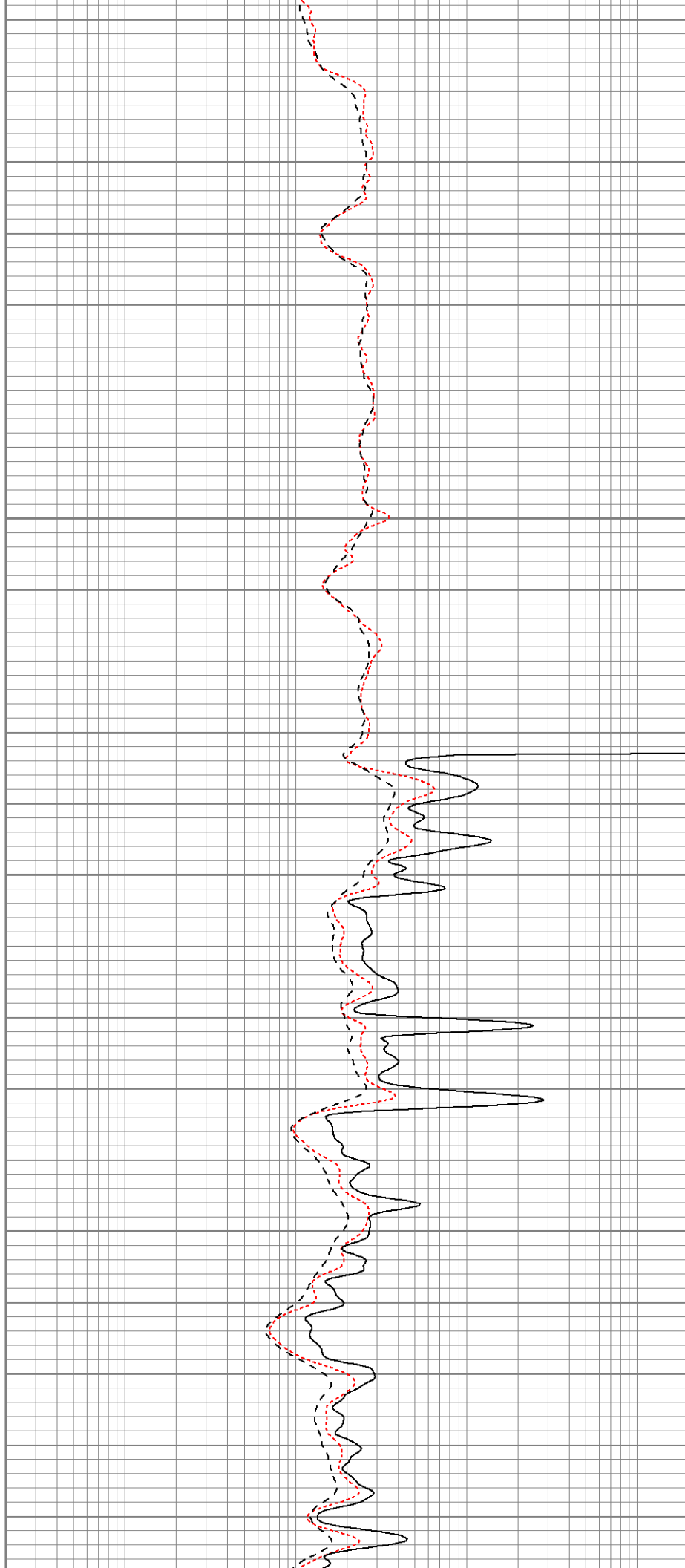
1750

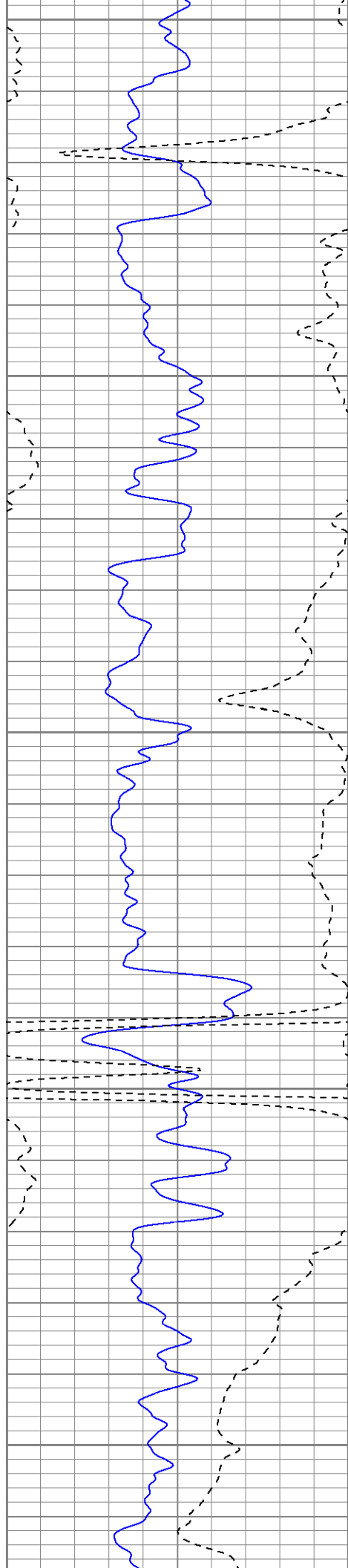
1800

Fluid Level

1850

1900





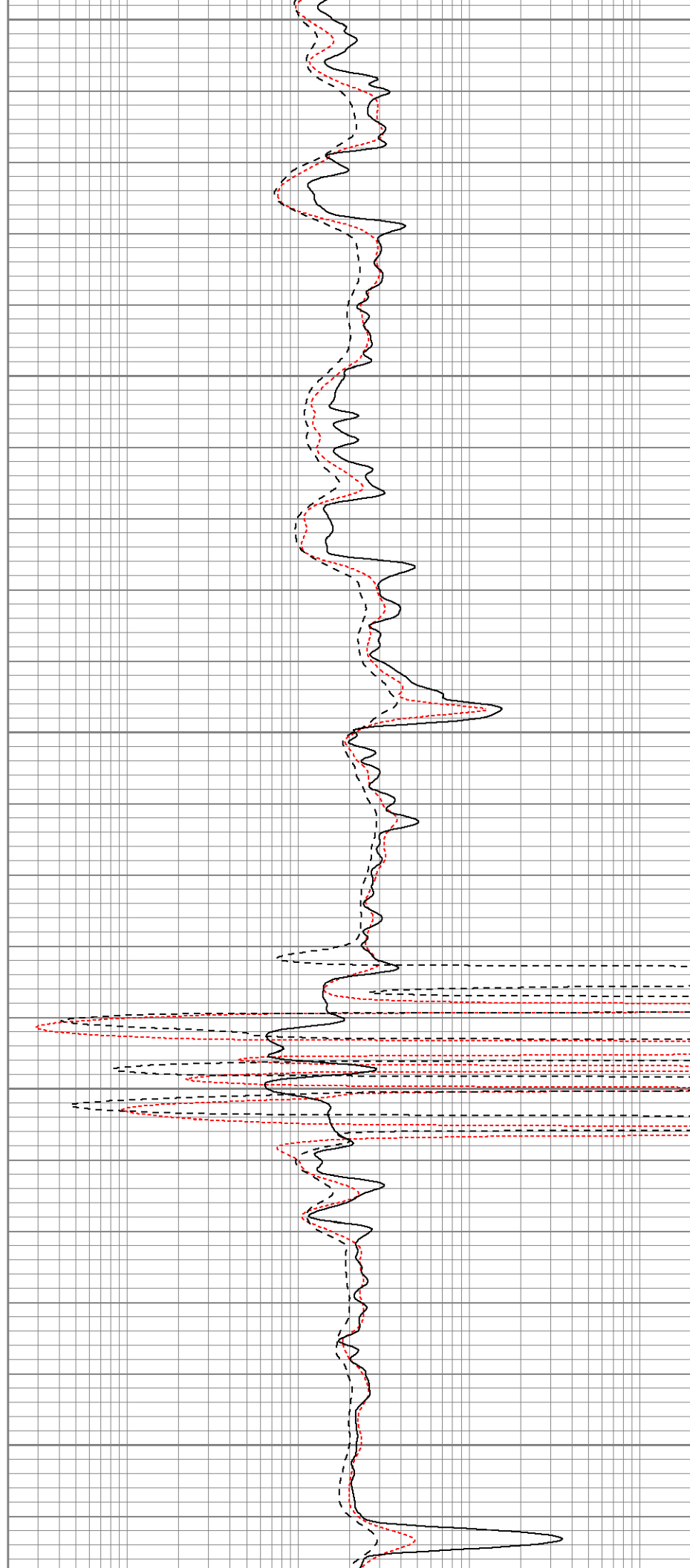
1950

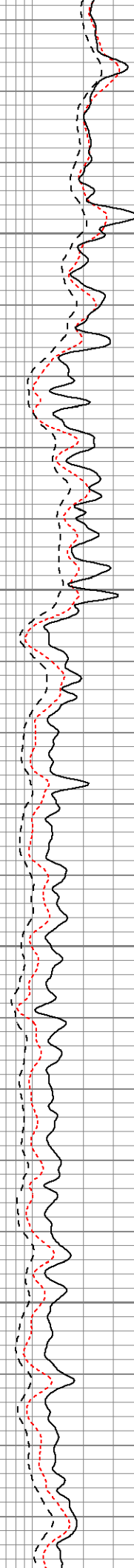
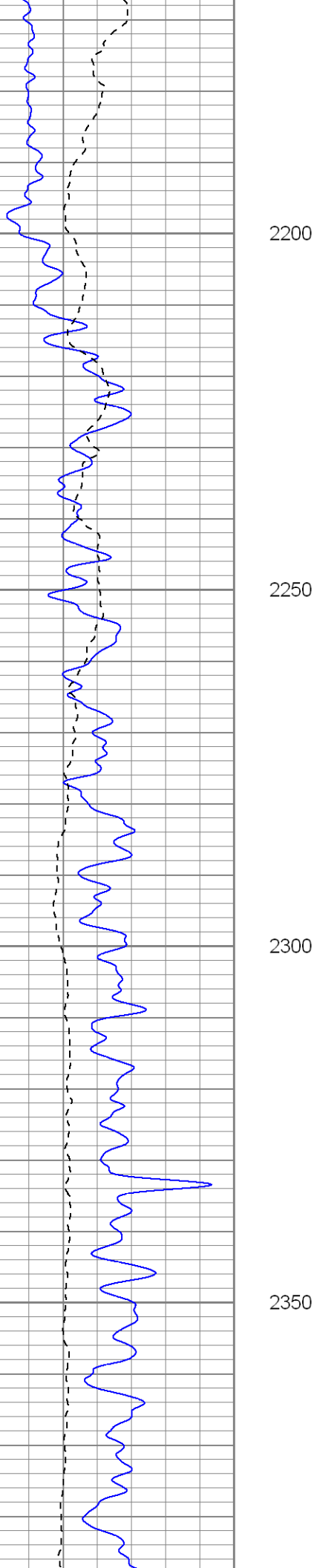
2000

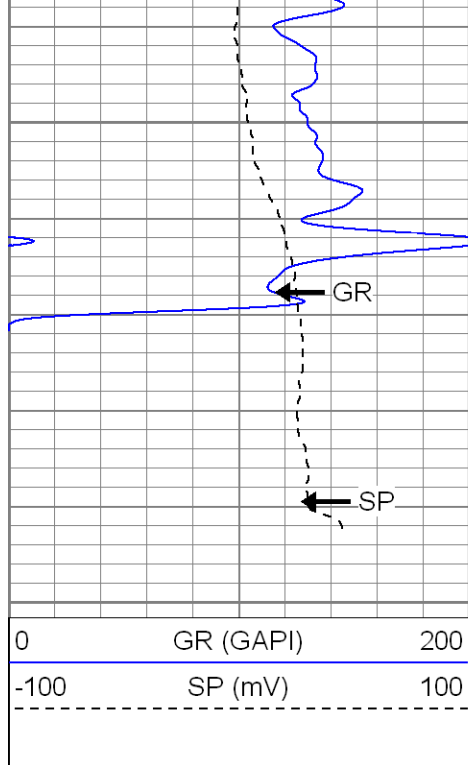
2050

2100

2150

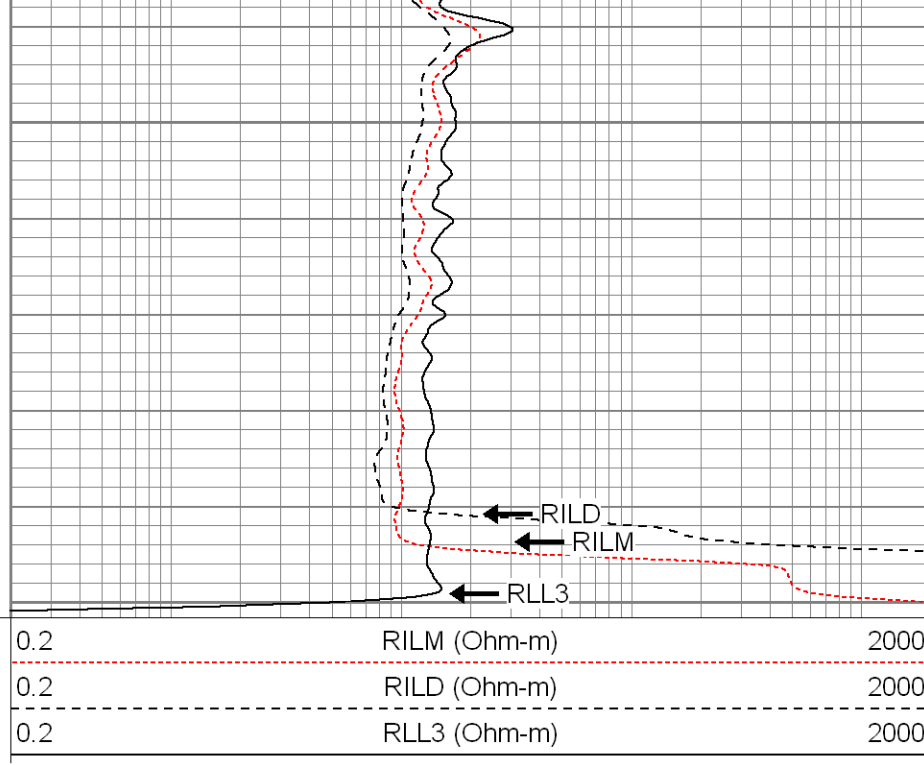






2400

2450



SUPERIOR

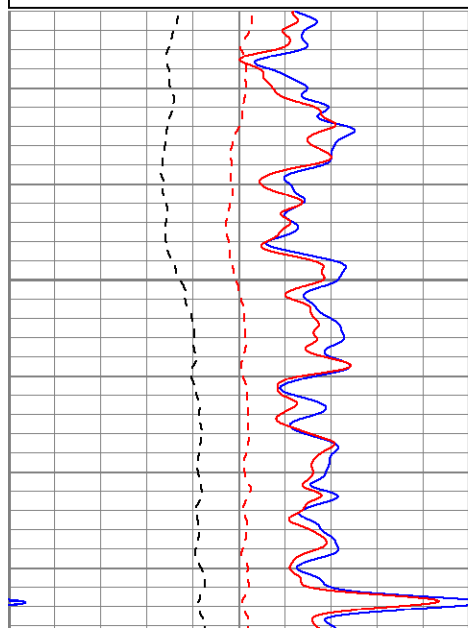
Black Lick, Pa.
Mercer, Pa.
Wooster, Oh.
Cleveland, Ok.
Trinidad, Co.

Repeat Section

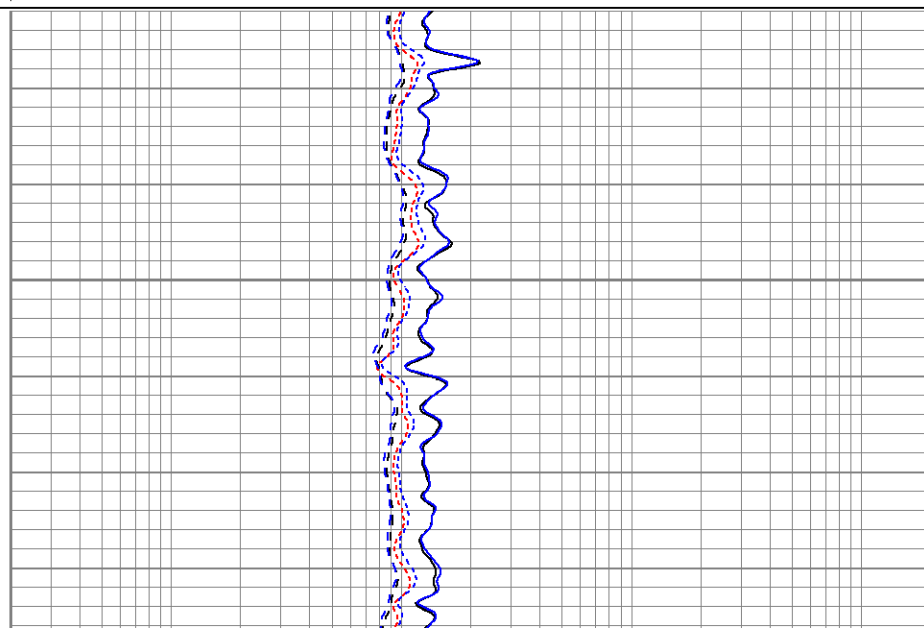
Database File: xtchr2516.db
Dataset Pathname: pass1.1
Presentation Format: dil
Dataset Creation: Thu Aug 30 14:26:30 2007 by Calc Open-Cased 061129
Charted by: Depth in Feet scaled 1:240

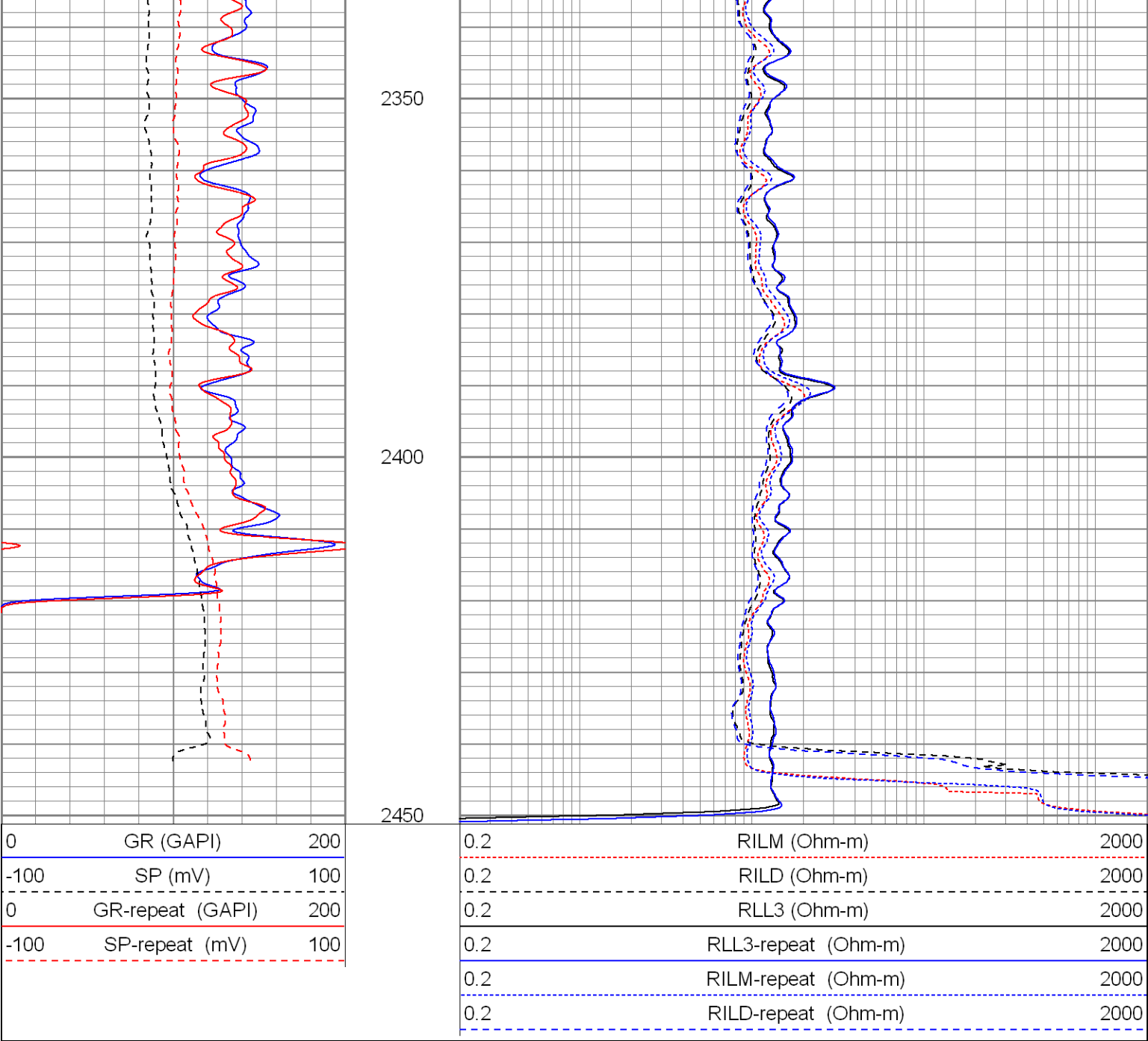
0	GR (GAPI)	200
-100	SP (mV)	100
0	GR-repeat (GAPI)	200
-100	SP-repeat (mV)	100

0.2	RILM (Ohm-m)	2000
0.2	RILD (Ohm-m)	2000
0.2	RLL3 (Ohm-m)	2000
0.2	RLL3-repeat (Ohm-m)	2000
0.2	RILM-repeat (Ohm-m)	2000
0.2	RILD-repeat (Ohm-m)	2000




2300





Calibration Report									
Database File:		xtohr2516.db							
Dataset Pathname:		pass2							
Dataset Creation:		Thu Aug 30 12:50:01 2007 by Log Open-Cased 061129							
Dual Induction Calibration Report									
Serial-Model:		5375-G							
Surface Cal Performed:		Wed Aug 08 13:10:57 2007							
Downhole Cal Performed:		Thu Aug 09 09:45:00 2007							
Surface Calibration									
		Readings			References			Results	
Loop:		Air	Loop		Air	Loop		m	b
Deep		0.002	0.622	V	0.000	500.000	mmho-m	807.380	-1.996
Medium		0.004	0.745	V	0.000	550.000	mmho-m	742.488	-3.313
Internal:		Zero	Cal		Zero	Cal		m	b

Deep	0.002	0.621	V	0.000	500.000	mmho-m	807.436	-1.769
Medium	0.004	0.745	V	0.000	550.000	mmho-m	742.818	-3.183
Downhole Calibration								
Readings			References			Results		
Internal:	Zero	Cal		Zero	Cal		m	b
Deep	0.000	0.000	mmho-m	-0.227	499.739	mmho-m	1.000	0.000
Medium	0.000	0.000	mmho-m	-0.131	549.624	mmho-m	1.000	0.000
Shallow	2.506	0.009	V	500.000	2.000	Ohm-m	105.000	0.000
Compensated Density Calibration Report								
Serial-Model:				2118-poilex				
Source / Verifier:				/				
Master Calibration Performed:				Fri Aug 17 09:14:33 2007				
Master Calibration								
Density			Far Detector		Near Detector			
Magnesium	1.710	g/cc	698.03		691.84	cps		
Aluminum	2.590	g/cc	159.73		473.01	cps		
Spine Angle = 75.54			Density/Spine Ratio = 0.578					
Size			Reading					
Small Ring	7.85	in	4.25		V			
Large Ring	14.00	in	9.25		V			
Gamma Ray Calibration Report								
Serial Number:			2001					
Tool Model:			OH					
Performed:			Wed Aug 08 12:47:02 2007					
Calibrator Value:			1.0	GAPI				
Background Reading:			0.0	cps				
Calibrator Reading:			1.0	cps				
Sensitivity:			0.1700	GAPI/cps				
Neutron Calibration Report								
Serial Number:			5145					
Tool Model:			G					
Performed:			Wed Aug 08 10:32:23 2007					
Calibrator Value:			1200	NAPI				
Calibrator Reading:			1700	cps				
Sensitivity:			1	NAPI/cps				

Sensor	Offset (ft)	Schematic	Description	Len (ft)	OD (in)	Wt (lb)
NEU	37.19		None	0.75	1.50	5.00
			NEU-G (5145) Gearhart Epithermal	5.75	3.50	85.00

GR	31.62			GR-OH (2001) SIE	3.50	3.25	40.00
LSD	23.45			CDL-poilex (2118)	8.79	4.00	275.00
DCAL	23.04						
SSD	22.91						
CILD	10.60			DIL-G (5375) Gearhart	20.83	4.00	345.00
SP	10.60						
CILM	6.89						
RLL3	1.70						

Dataset:
xtohr2516.db: field/well/run1/pass2

Total Length:
39.62 ft

Total Weight:
750.00 lb

O.D.
4.00 in