

Patterson

Company XTO Energy Inc.
Well Hill Ranch 35-15
Field Purgatorie River
County Las Animas
State CO

Company
Well
Field
County
Location
Permanent De
Log Measure
Drilling Meas.

CEMENT BOND
GAMMA RAY

XTO Energy Inc.
Hill Ranch 35-15
Purgatorie River
Las Animas State CO

AFI #: 05 071 08794 00

778' FSL & 2586' FE

SEC 35 TWP 31S RGE 67W

Sum Ground Level Elevation 7960'

From Ground Level K.E. D.F. G.L. 7960'

Head From Ground Level

10/2/05

one

2545'

2453'

2449'

Surf.

7 7/8"

water

///

///

Surf.

9:20

9:40

T244

Trinidad

Worley

Mr. Polley

To Size Weight From To

Wgt/Ft Top Bottom
00 00 410' NA

<<< Fold Here

Comments

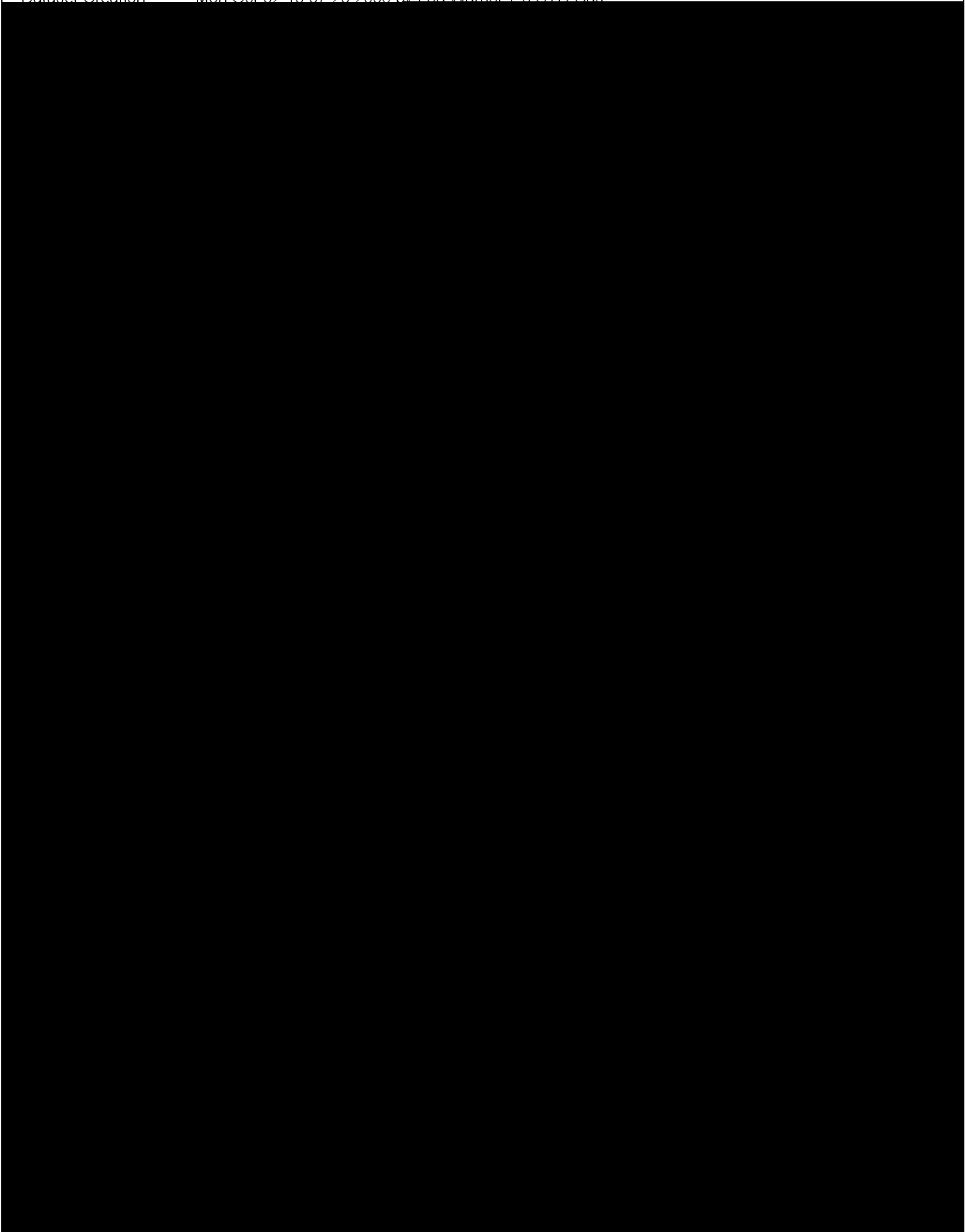
Lorencito Canyon, drive to XTO hill, drive thru top of hill, sta
drive past location on left, 1st location on right

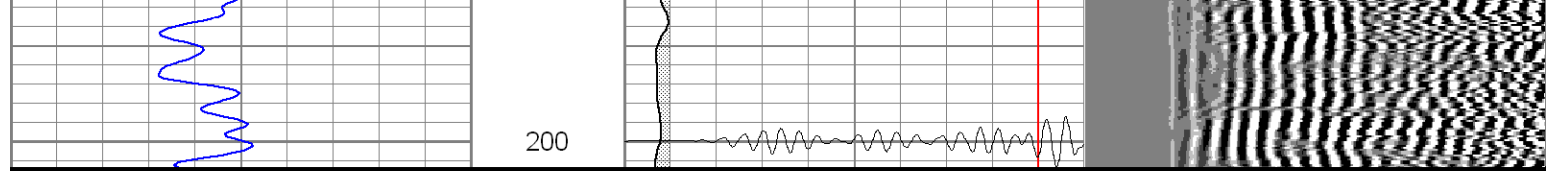
Patterson

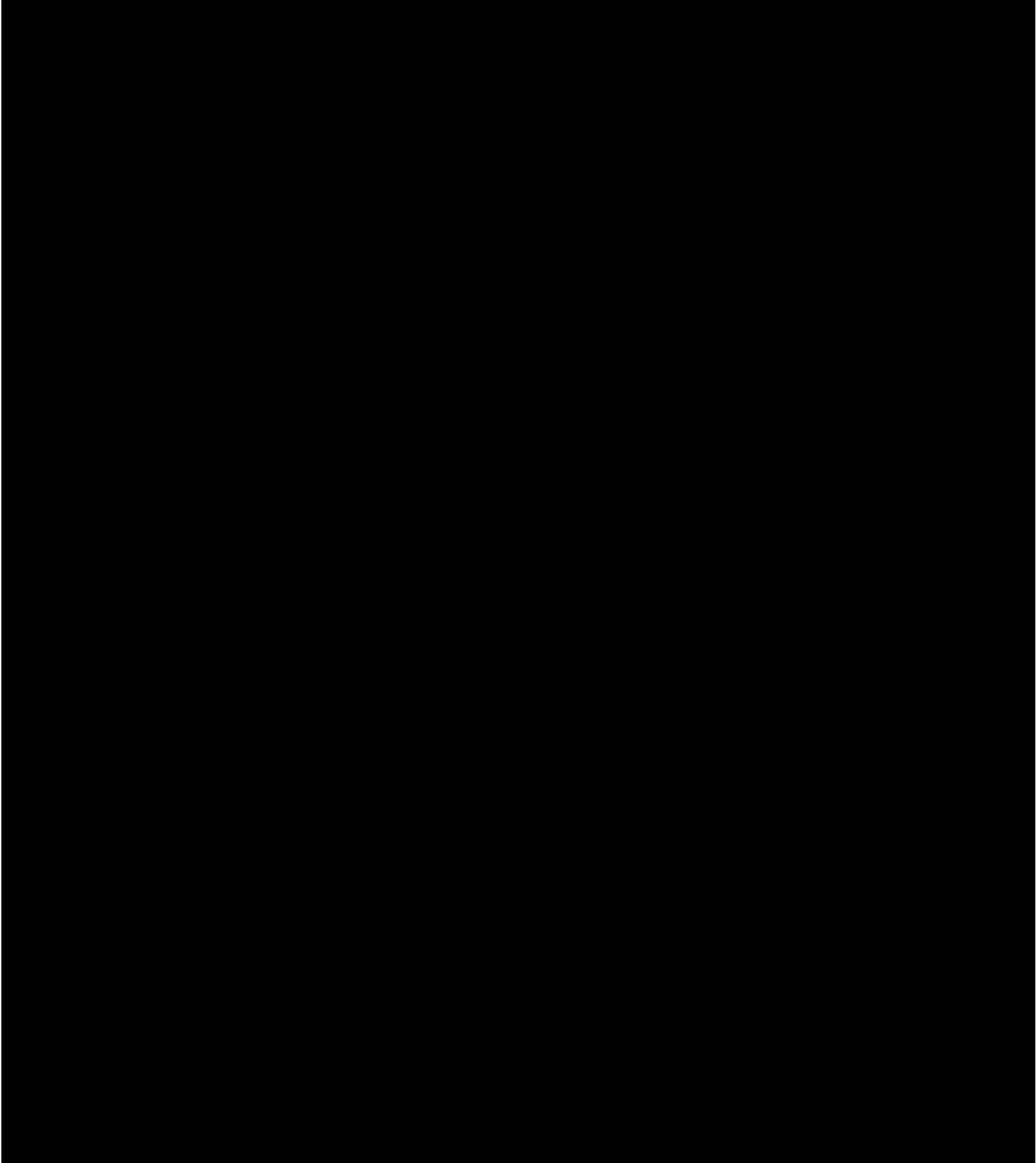
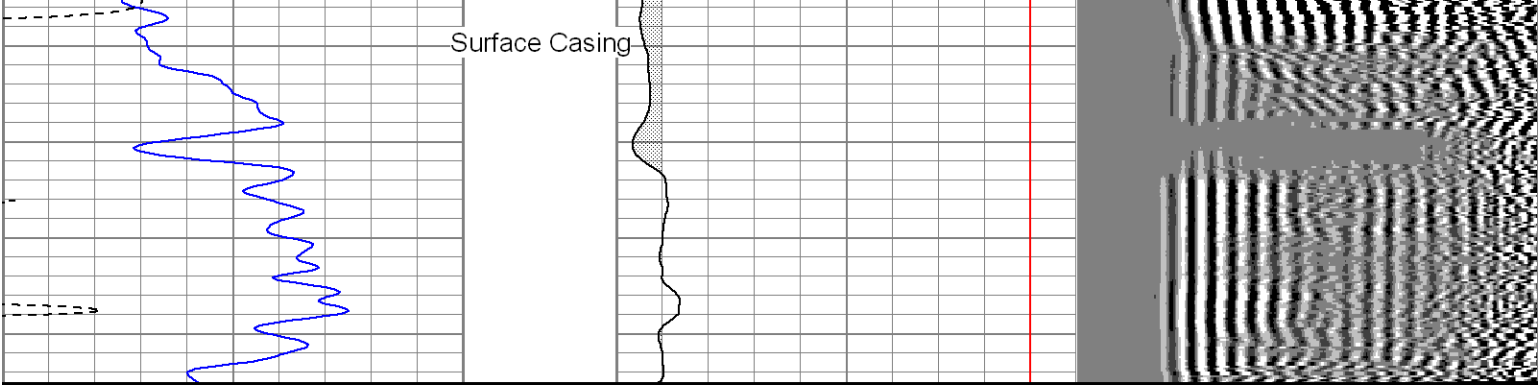
Main Pas

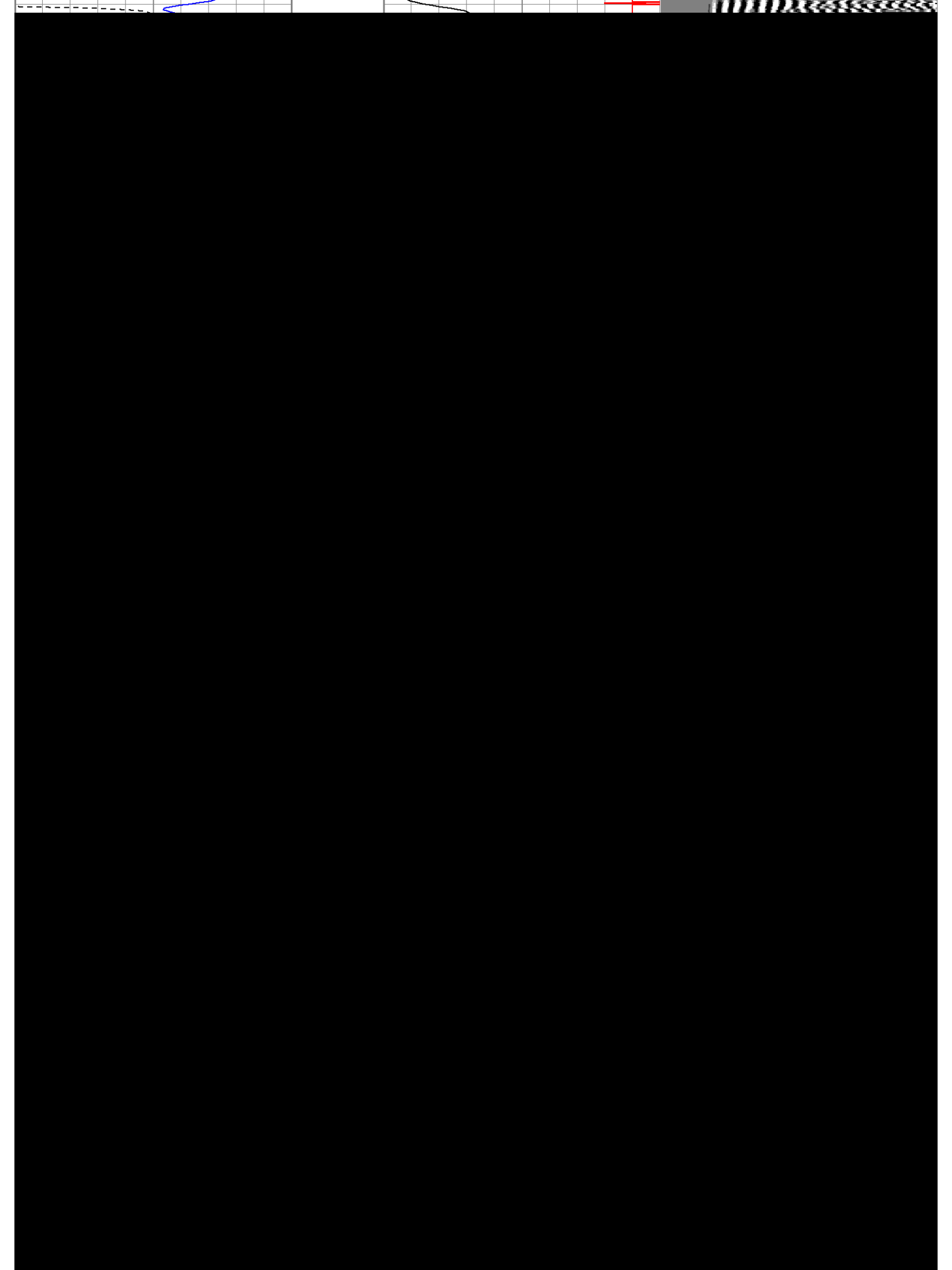
SS

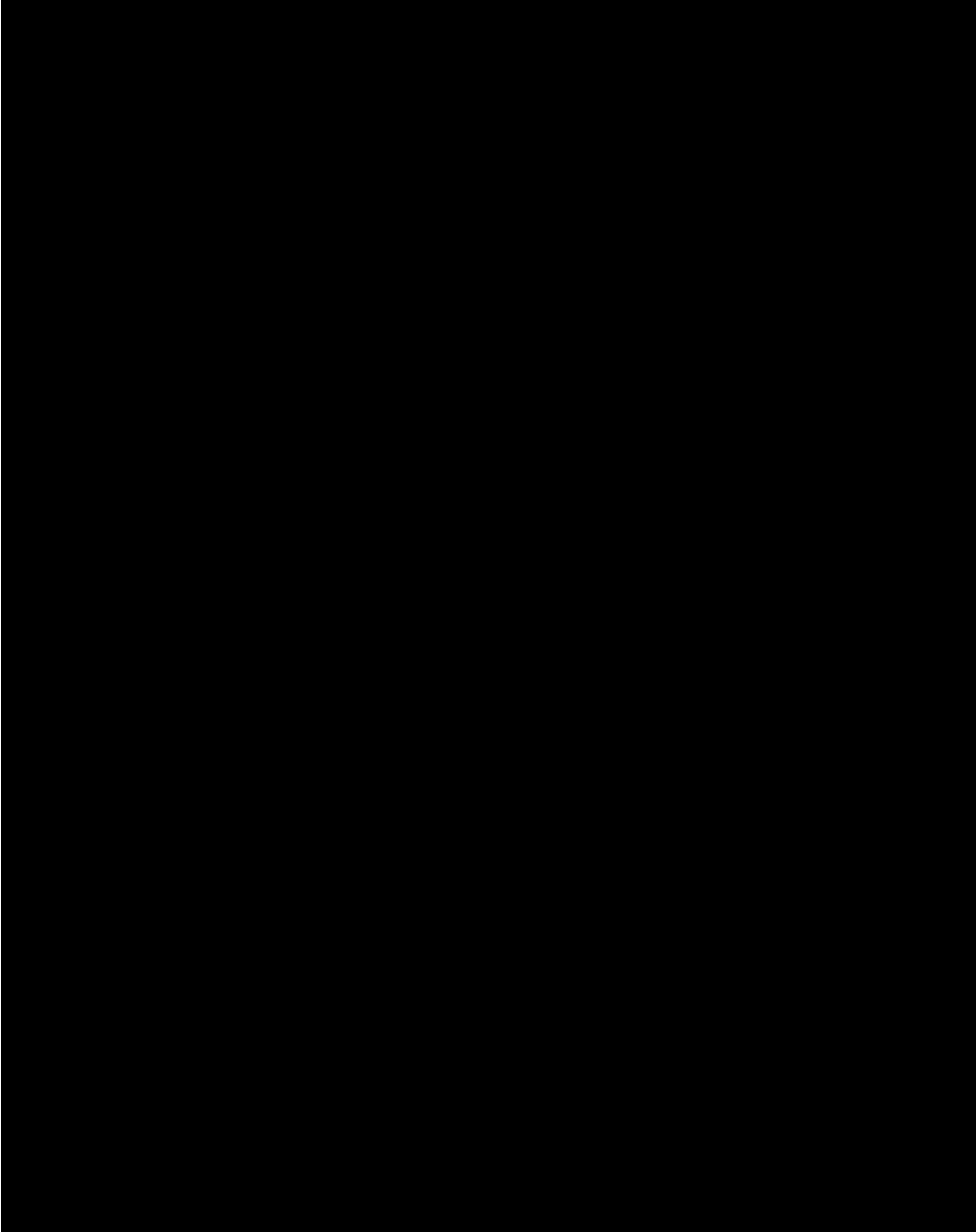
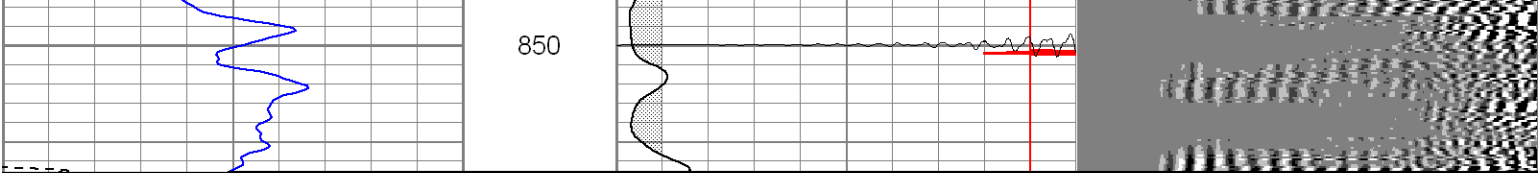
Database File: hr35-15b100206.db
Dataset Pathname: pass2
Presentation Format: cblrt
Dataset Creation: Mon Oct 02 10:07:20 2006 by Log Warrior 7.0 STD Cas

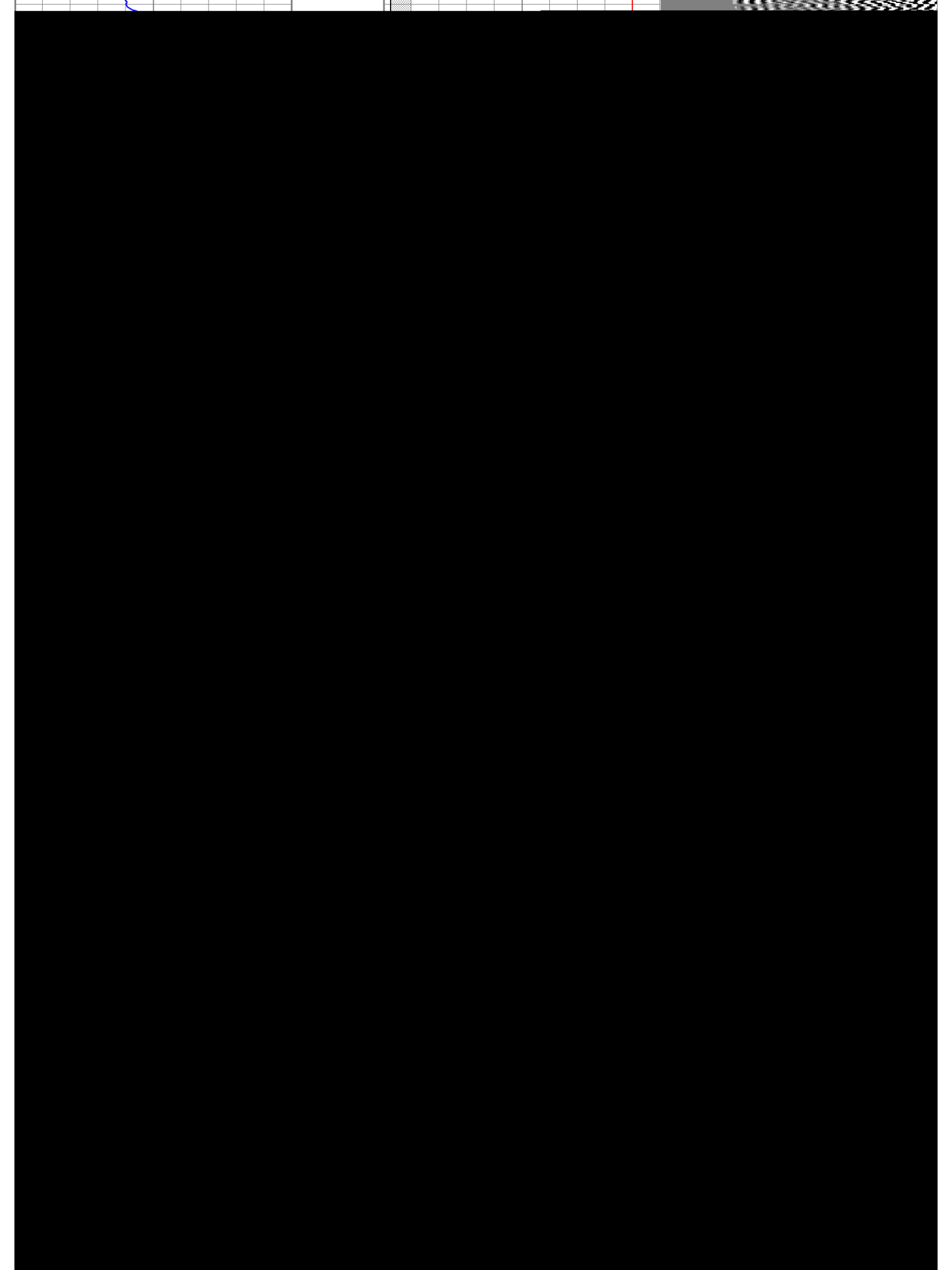


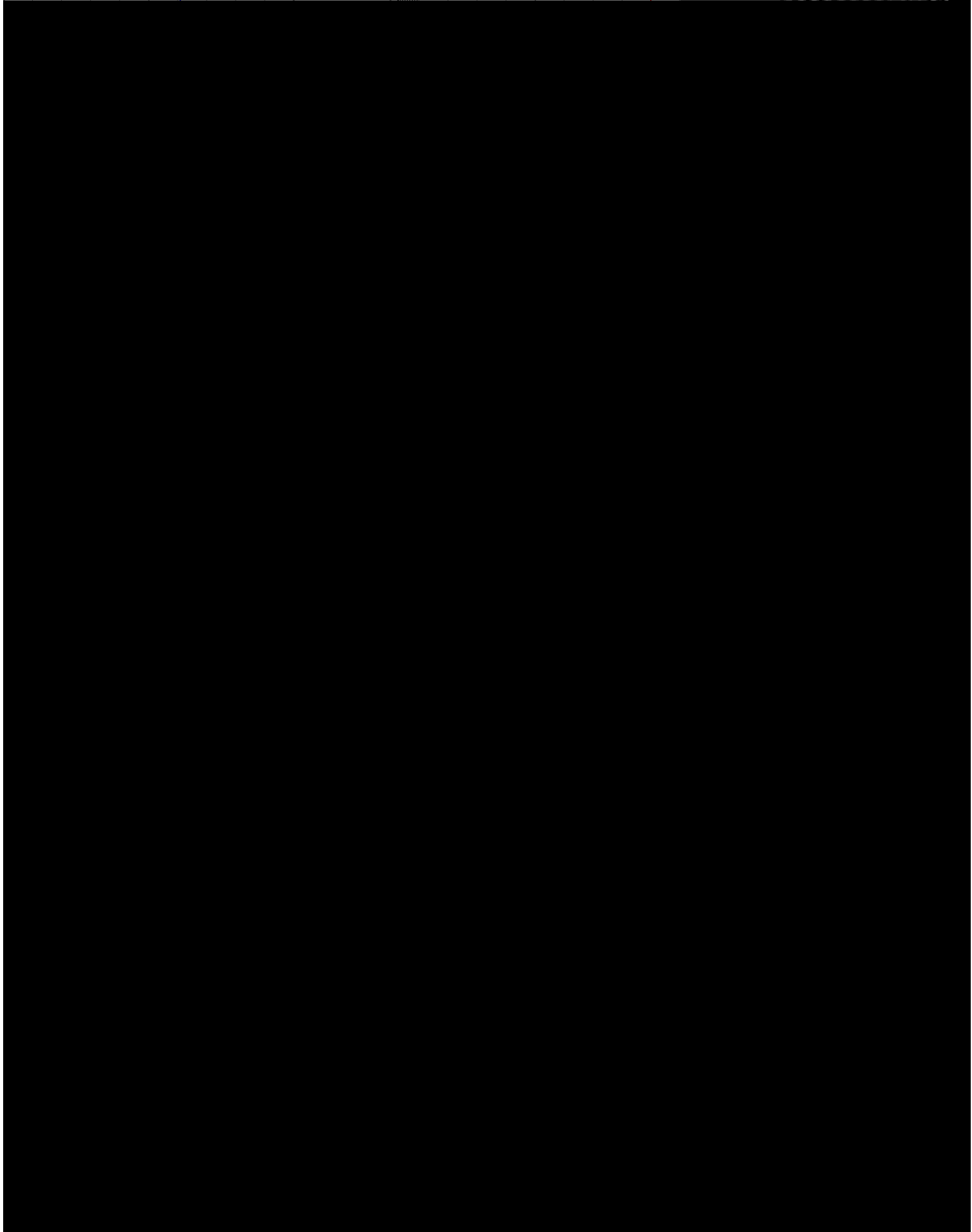
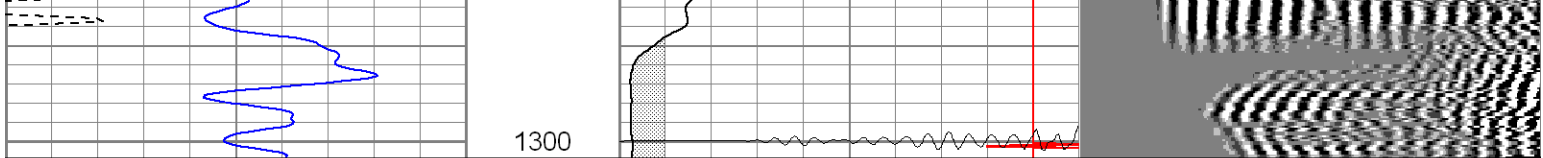


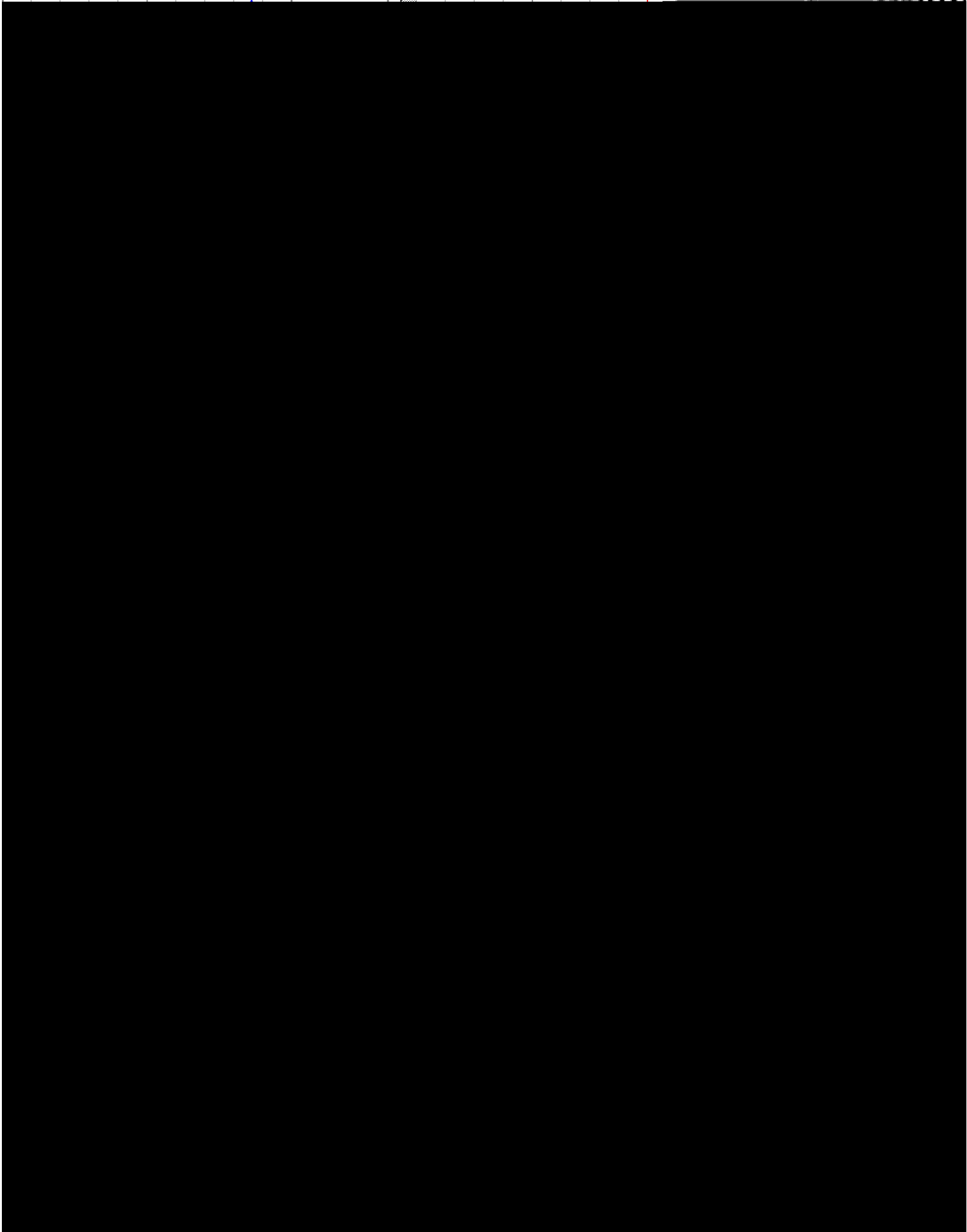
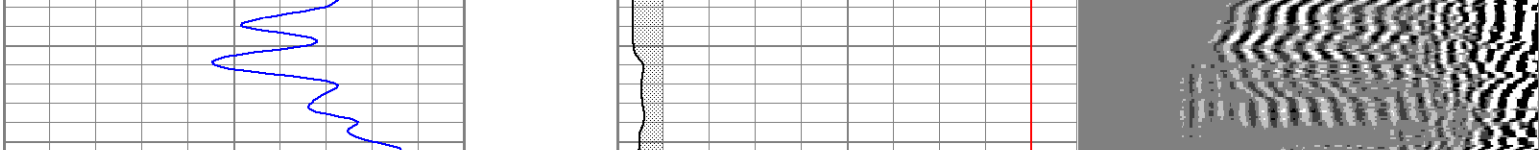


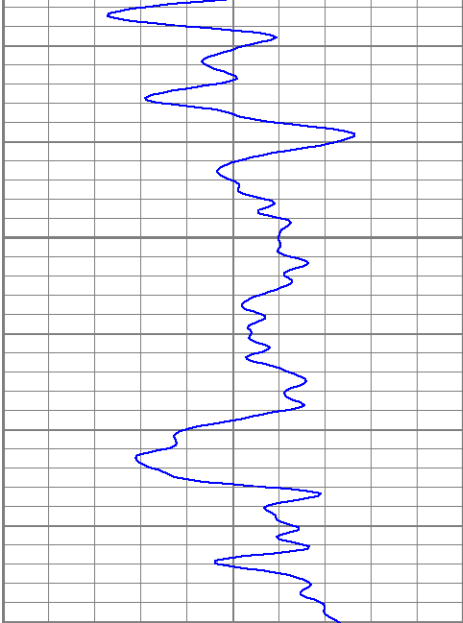




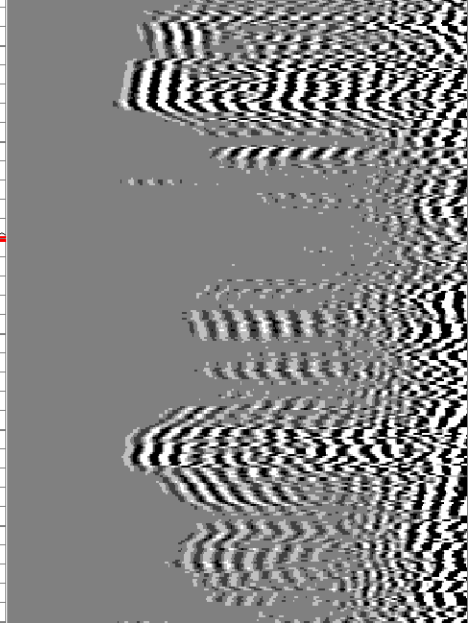
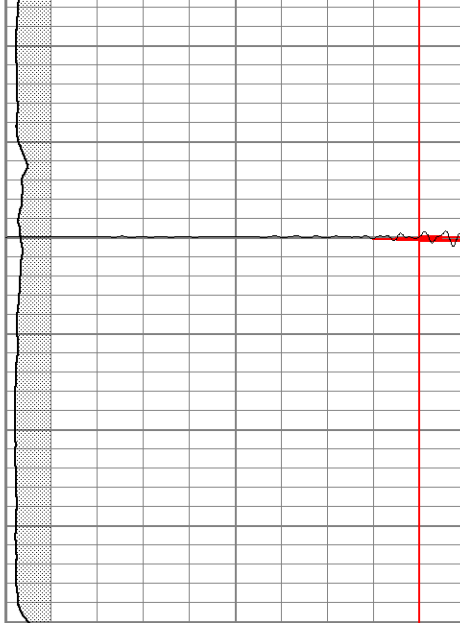


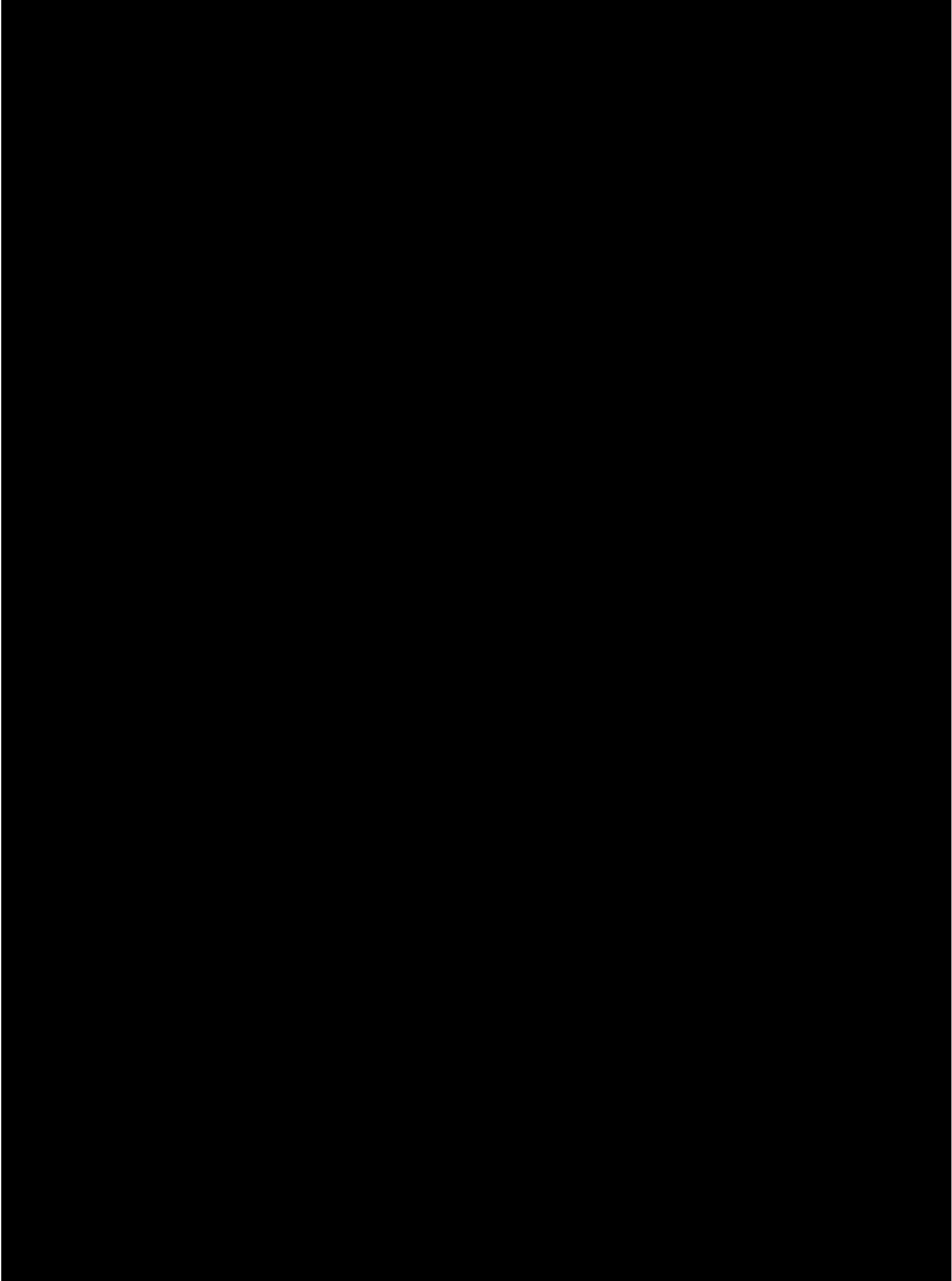


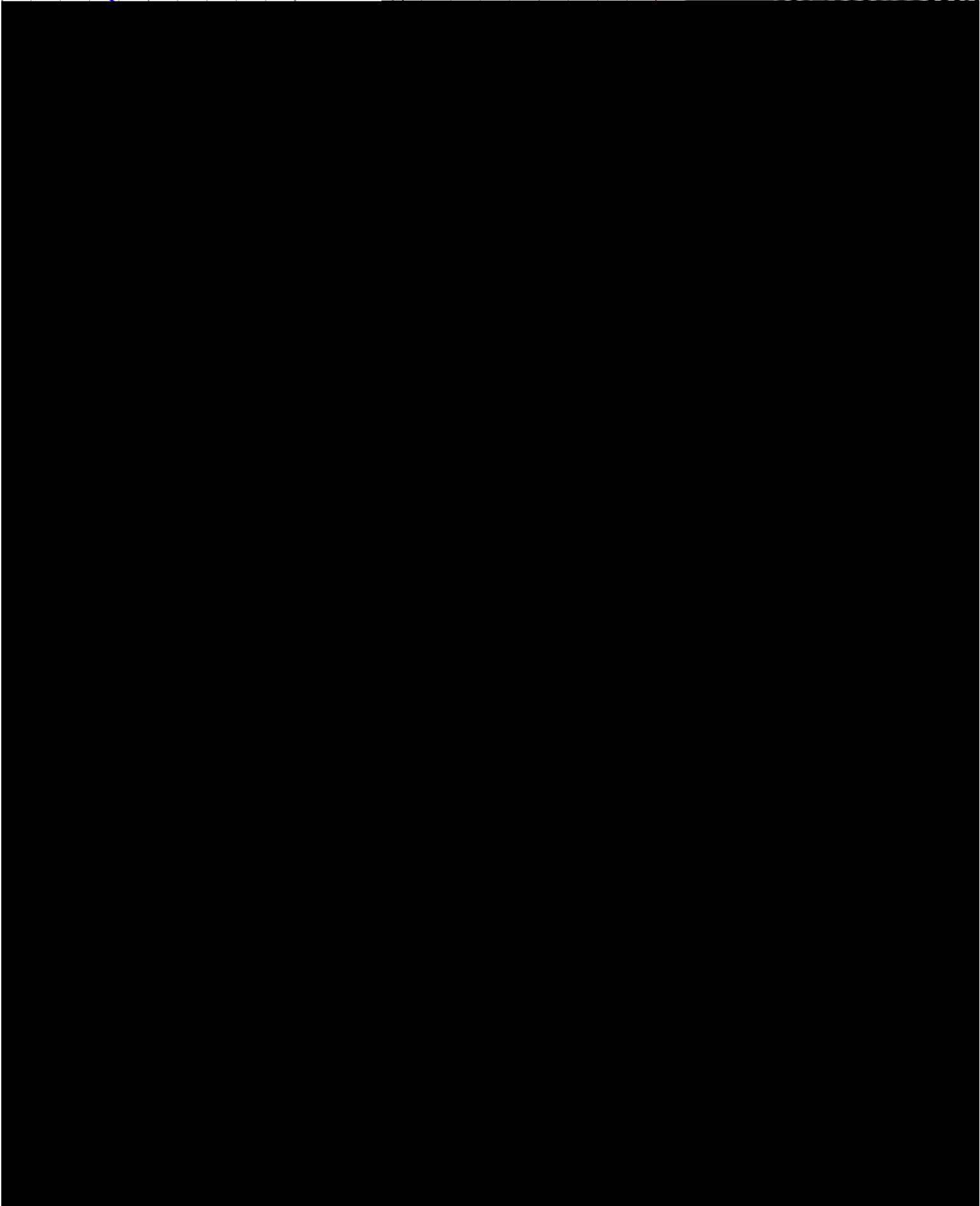
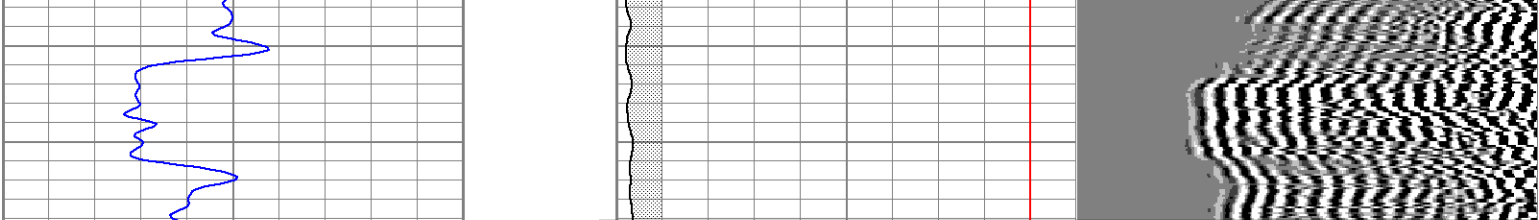


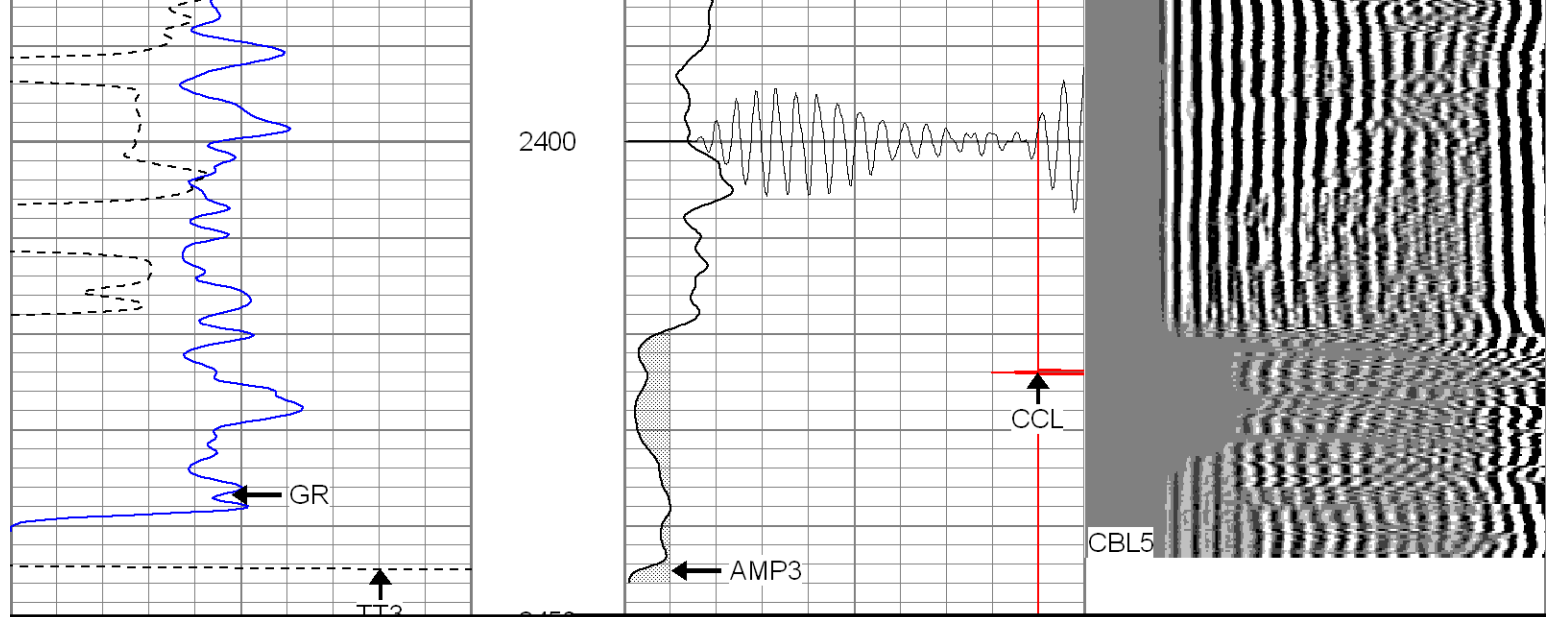


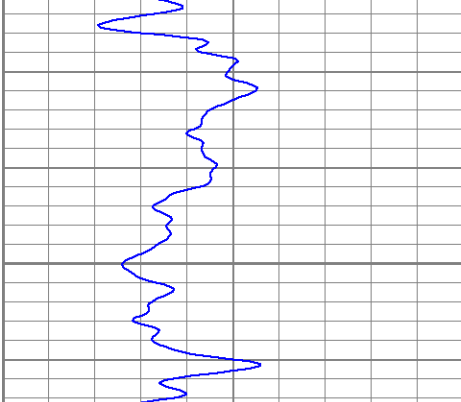
1750



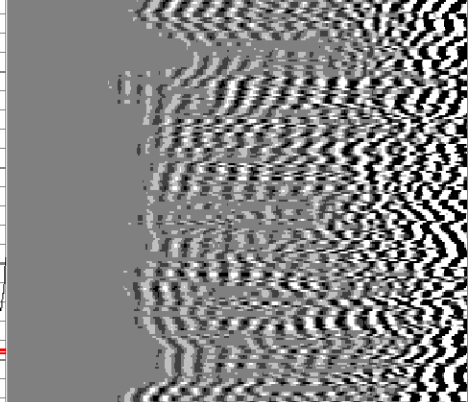
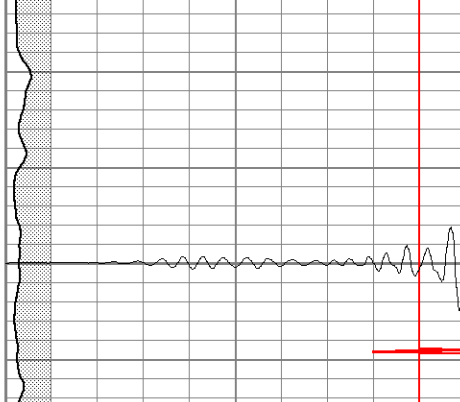


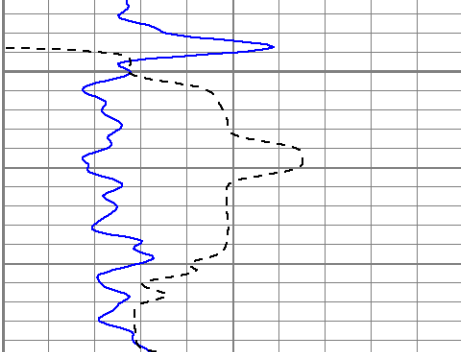




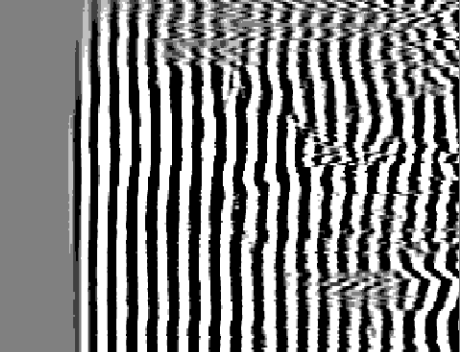
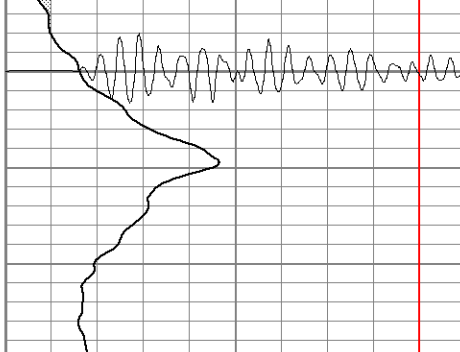


2100





2300



Signal Zero:	0	0	mV
Calibrated Amplitude:	85	85	mV
Reading at Signal Zero:	-0.02	0.00866699	V
Reading in Free Pipe:	1.4	1.4	V
Gain:	59.8592	61.0925	
Offset:	1.19718	-0.529488	

Calibration Data Report

Serial Number:	Titan5		
Tool Model:	T2		
Performed:	Thu Aug 17 10:26:00 2006		
Calibrator Value:	1.0	GAPI	
Background Reading:	0.0	cps	
Calibrator Reading:	1.0	cps	
Sensitivity:	1.2000	GAPI/cps	