



COMPENSATED DENSITY
COMPENSATED NEUTRON
GAMMA RAY

PHOENIX SURVEYS, INC.

Company
Well
Field
County
State/Prv

Company K.P. Kauffman Co.
Well Bliss 41-21
Field Wattenberg
County Weld State/Province Colorado

Location SHL: 1034' FNL & 263' FEL NE NE
BHL: 660' FNL & 660' FEL
Sec. 21, Twp. 2N, Rge. 68W

Other Services
Induction

Elevation

Permanent Datum GL Elevation 4888
Log Measured From KB
Drilling Measured From KB

K.B. 4900
D.F. 4899
G.L. 4888

Date August 4, 2006

Run Number 1

Depth Driller 4926

Depth Logger 4923

Bottom Logged Interval 4903

Top Log Interval 4100

Casing Driller 627

Casing Logger Not Logged

Bit Size 7-7/8"

Type Fluid in Hole Chem Gel

Density / Viscosity 9.8 / 63

pH / Fluid Loss 9.0 / 8.0

Source of Sample Mudpit

Rm @ Meas. Temp 1.92 @ 87° F

Rmf @ Meas. Temp 1.53 @ 87° F

Rmc @ Meas. Temp 2.23 @ 87° F

Source of Rmf / Rmc Measure / Calc

Rm @ BHT 1.34 @ 139° F

Time Circulation Stopped 2015 8/3/06

Time Logger on Bottom 0030

Maximum Recorded Temperature 139° F

Equipment Number 4041

Location Brighton, CO

Recorded By Ian Harris

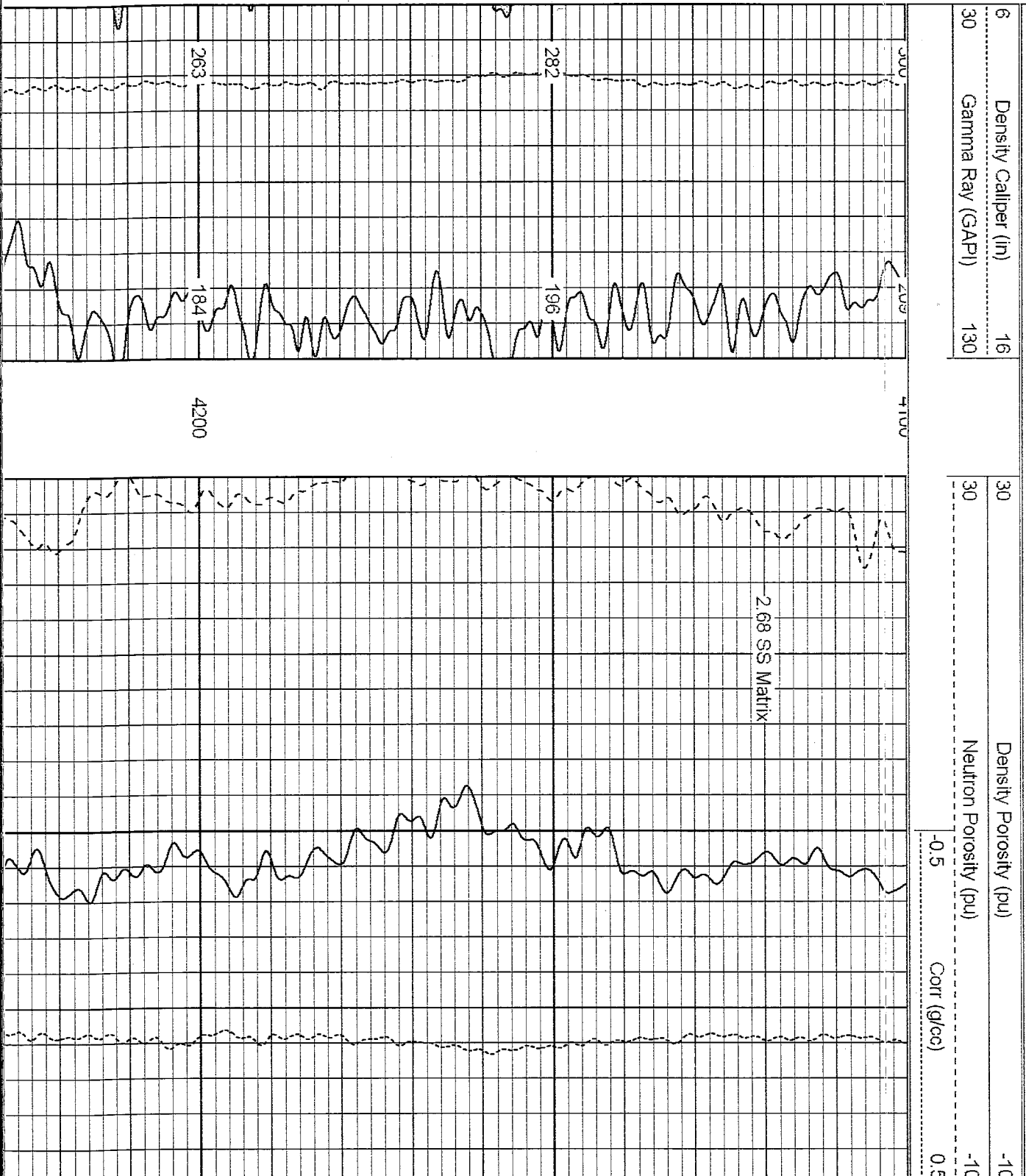
<<< Fold Here >>>

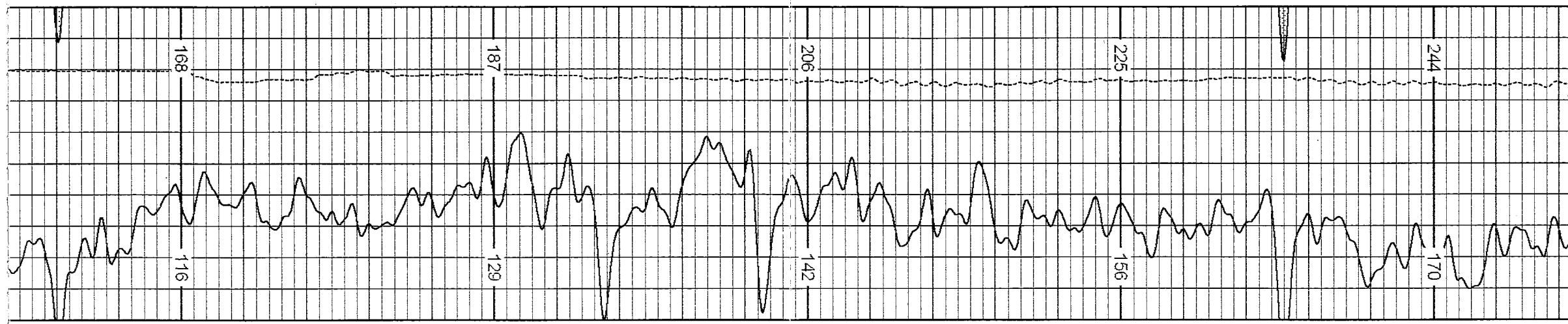
All interpretations are opinions based on inferences from electrical or other measurements and we cannot and do not guarantee the accuracy or correctness of any interpretation, and we shall not, except in the case of gross or willful negligence on our part, be liable or responsible for any loss, costs, damages, or expenses incurred or sustained by anyone resulting from any interpretation made by any of our officers, agents or employees. These interpretations are also subject to our general terms and conditions set out in our current Price Schedule.

Comments

Annular volume calculated for 4-1/2" casing
KPK Drilling Rig 1
Thank you for using Phoenix Surveys!!
API #: 05-123-24035

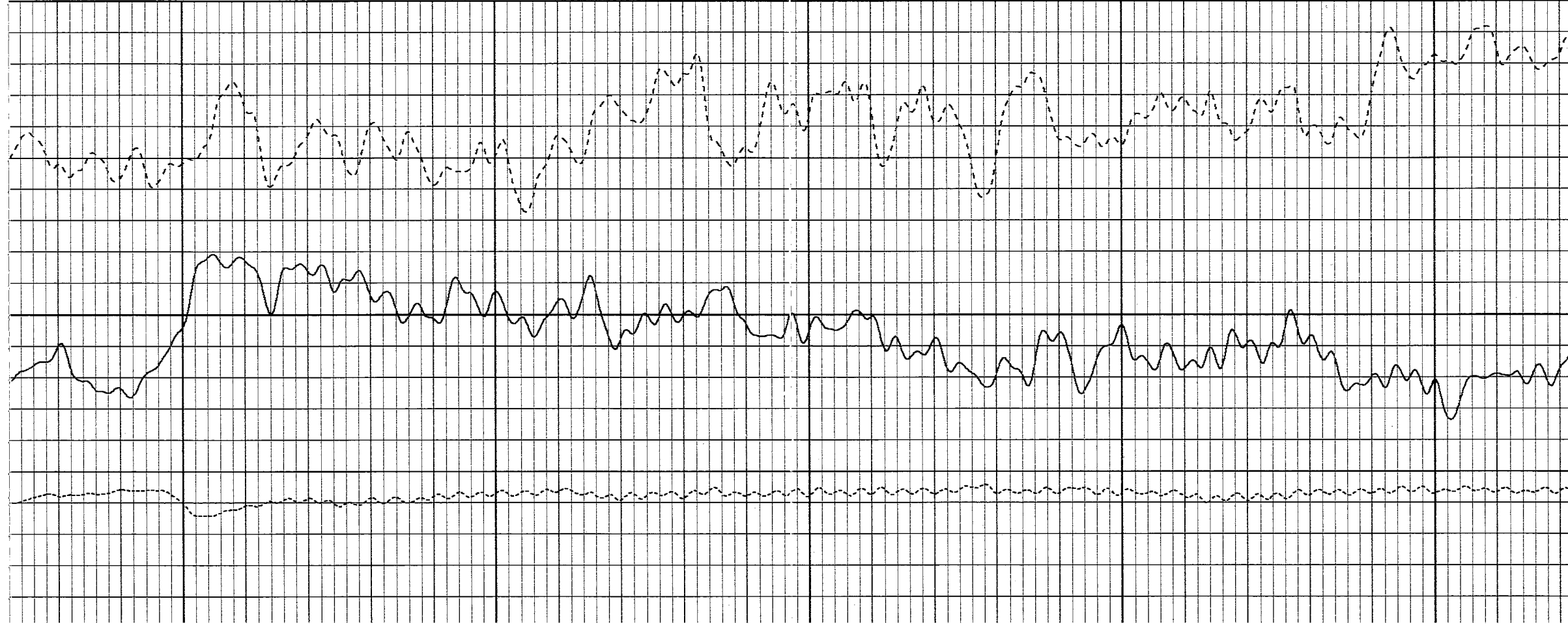
Database File: 6246.db
Dataset Pathname: pass3.3
Presentation Format: poro1
Dataset Creation: Fri Aug 04 00:57:04 2006 by Calc Open-Cased 051020
Charted by: Depth in Feet scaled 1:240

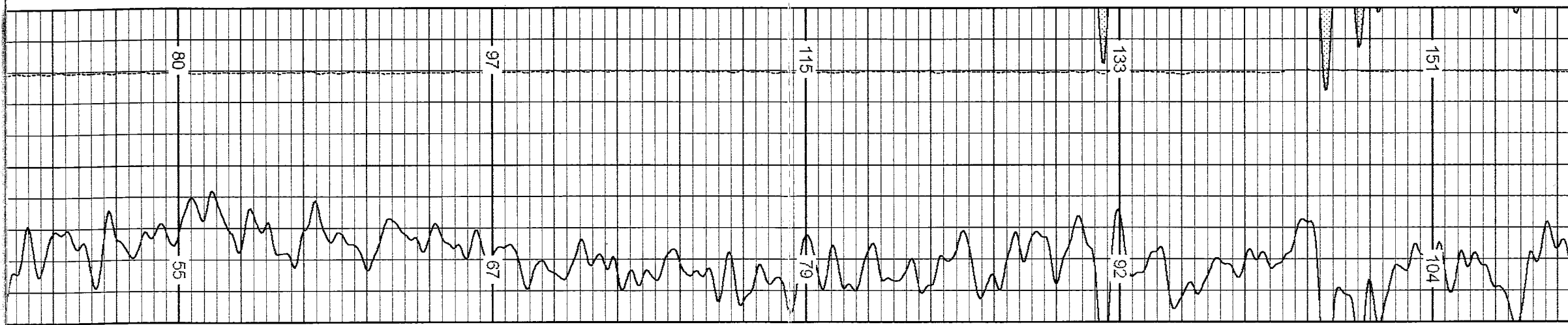




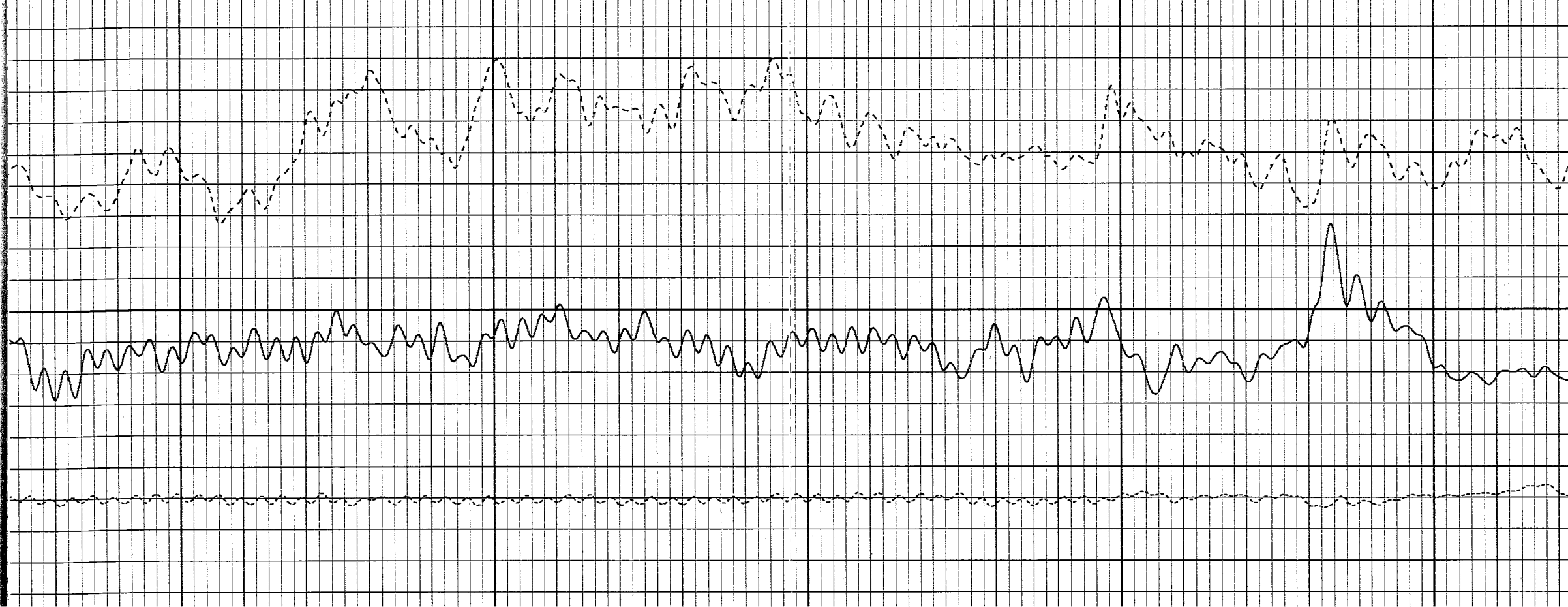
4400

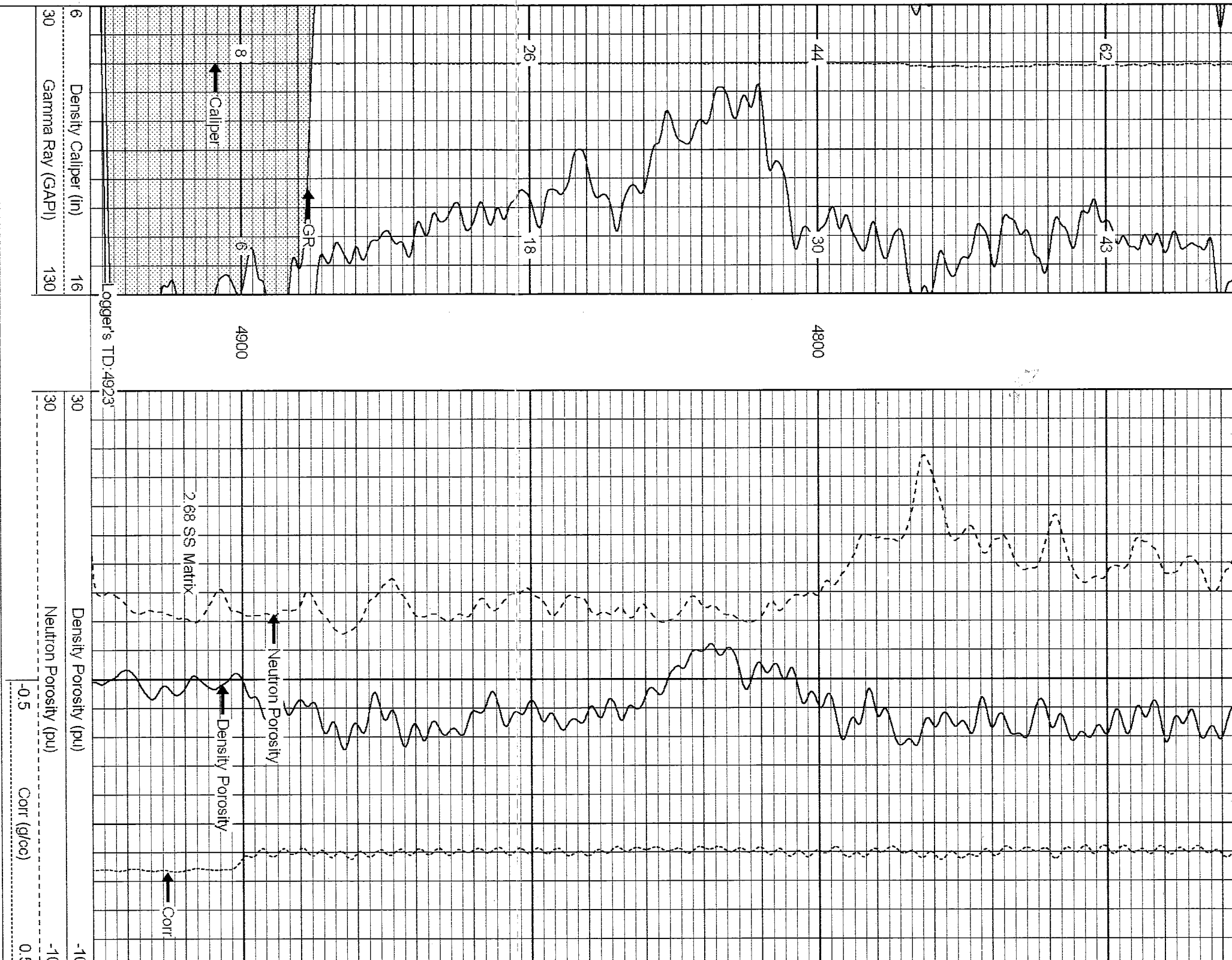
4300





4700 4600 4500





Database File: 6246.db
Dataset Pathname: pass2.2
Presentation Format: poro1
Dataset Creation: Fri Aug 04 00:33:42 2006 by Calc Open-Cased 051020
Charted by: Depth in Feet scaled 1:240

6	Density Caliper (in)	16	30	Density Porosity (pu)	-10
30	Gamma Ray (GAPI)	130	30	Neutron Porosity (pu)	-10

BRAN-DEX

CEMENT BOND
GAMMA RAY

WIRELINE SERVICES

COLLAR CORRELATION LOG

Company	K.P. KAUFFMAN CO.		
Well	BLISS 41-21		
Field	WATTENBERG		
County	WELD	State	COLORADO
Location:	APL # : 05-123-24035		Other Serv
	N E N E		NONE
	SEC 21 TWP 2 N RGE 68 W		
Permanent Datum	GROUND LEVEL	Elevation	4888
Log Measured From	KELLY BUSHING		
Drilling Measured From	KELLY BUSHING		
Elevation	K.B. 4900 D.F. 4889 G.L. 4888		

Date 10-AUGUST-2006

Run Number	ONE
Depth Driller	4926
Depth Logger	4839
Bottom Logged Interval	4840
Top Log Interval	2850
Open Hole Size	7-7/8
Type Fluid	WATER
Density / Viscosity	---
Max. Recorded Temp.	NOT RECORDED
Estimated Cement Top	3010
Time Well Ready	---
Time Logger on Bottom	---
Equipment Number	455-MAST - RED
Location	FT MORGAN
Recorded By	HAYES
Witnessed By	MR. RICK OHLEMEIER

Borehole Record			Tubing Record				
Run Number	Bit	From	To	Size	Weight	From	To

Casing Record	Size	Wgt/Ft	Top	Bottom
Surface String				
Prot. String				
Production String	4.5	11.6	SURFACE	TOTAL DEPT
Liner				