

Patterson

**CEMENT
BOND
LOG**

Company XTO Energy, Inc.
Well Apache Canyon 31-16
Field Purgatoire River
County Las Animas State CO

Location: API # : 05 071 08814 00
923' FSL & 570' FEL
Other Services temp.
Permanent Datum SEC 31 TWP 33S RGE 67W
Log Measured From Ground Level Elevation 8035'
Drilling Measured From Ground Level Elevation K.B. -----
D.F. -----
G.L. 8035'

Company XTO Energy, Inc.
Well Apache Canyon 31-16
Field Purgatoire River
County Las Animas
State CO

Date 7-26-06

Run Number	One		
Depth Driller	2625'		
Depth Logger	2560'		
Bottom Logged Interval	2558'		
Top Log Interval	Surface		
Open Hole Size	7 7/8"		
Type Fluid	Water		
Density / Viscosity	///		
Max. Recorded Temp.	124 DEG F		
Estimated Cement Top	796'		
Time Well Ready	12:15 P.M.		
Time Logger on Bottom	12:30 P.M.		
Equipment Number	T720		
Location	Trinidad		
Recorded By	M. Norton		
Witnessed By	Mr. Billy Blatnick		

Borehole Record				Tubing Record			
Run Number	Bit	From	To	Size	Weight	From	To

Casing Record	Size	Wgt/Ft	Top	Bottom
Surface String	8 5/8"		00	810'
Prot. String				
Production String	5 1/2"		00	N/A
Liner				

<<< Fold Here >>>

All interpretations are opinions based on inferences from electrical or other measurements and we cannot and do not guarantee the accuracy or correctness of any interpretation, and we shall not, except in the case of gross or willful negligence on our part, be liable or responsible for any loss, costs, damages, or expenses incurred or sustained by anyone resulting from any interpretation made by any of our officers, agents or employees. These interpretations are also subject to our general terms and conditions set out in our current Price Schedule.

Comments

Well Directions:
First Bosque Entrance, up Cherry Canyon, at Y go left, stay on main road 6.2 miles,
turn left to location.
Log ran under 1000 PSI

Patterson

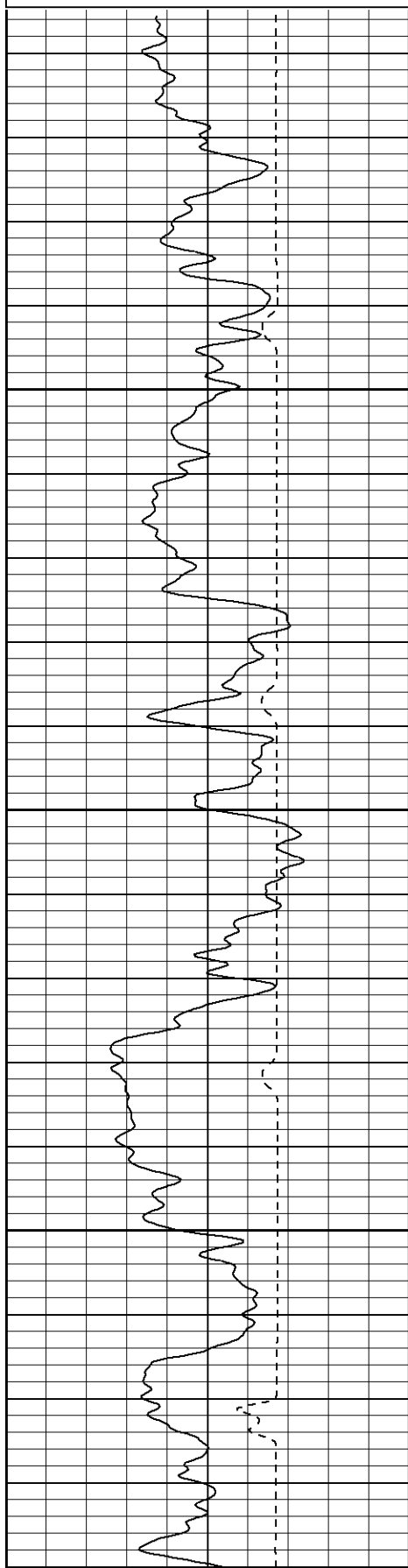
Main Pass

Database File: xtoac3116072606b.db
Dataset Pathname: pass3
Presentation Format: cblrt
Dataset Creation: Wed Jul 26 13:15:01 2006 by Log Warrior 7.0 STD Ope
Charted by: Depth in Feet scaled 1:240

0	GR (GAPI)	200
400	TT3 (usec)	200

0	AMP3 (mV)	100
18	CCL	-2

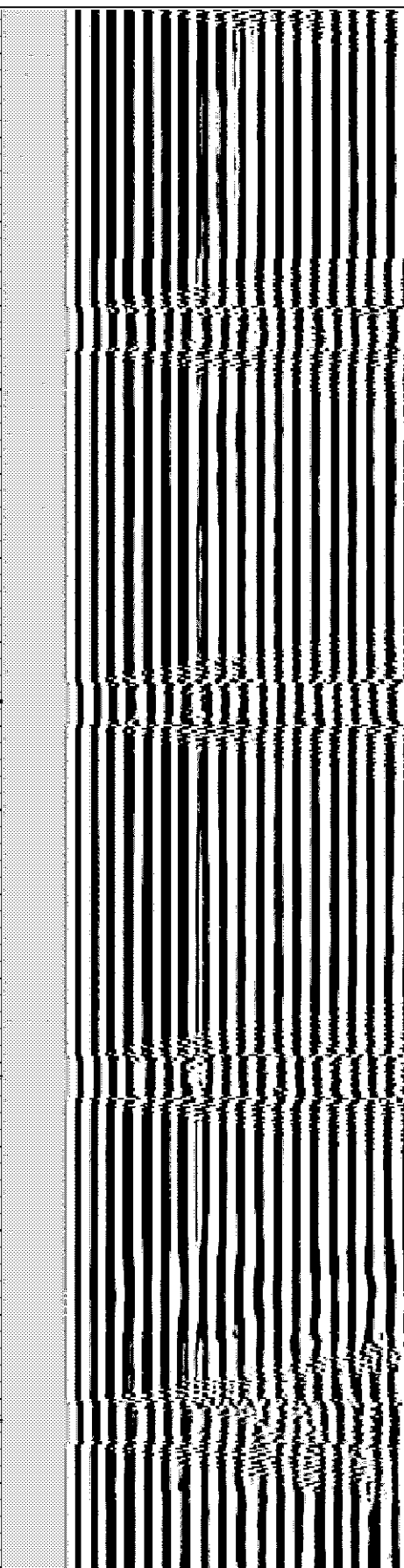
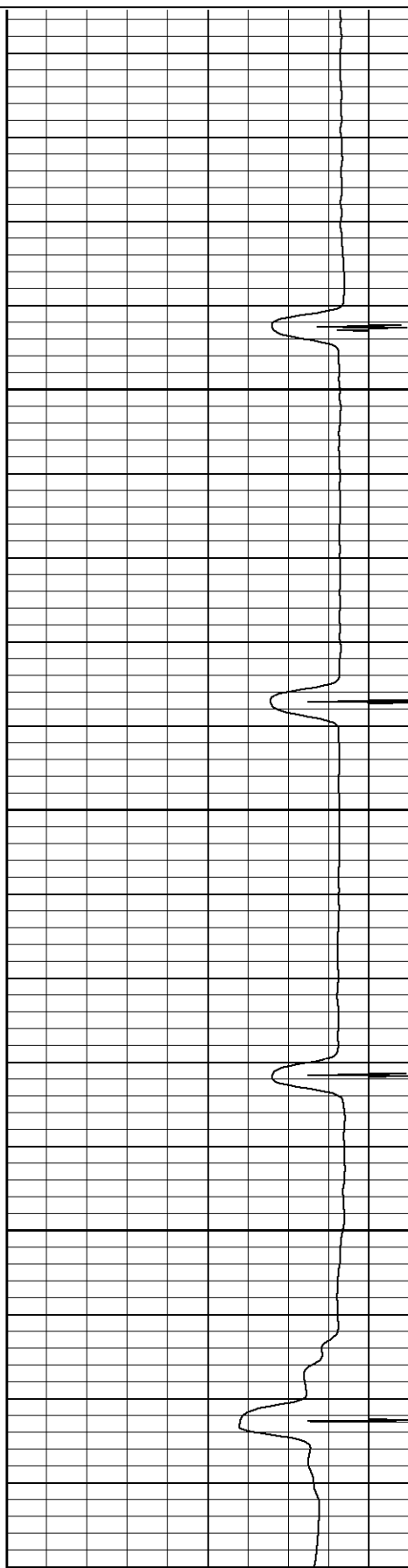
200	Variable Density	1200
-----	------------------	------

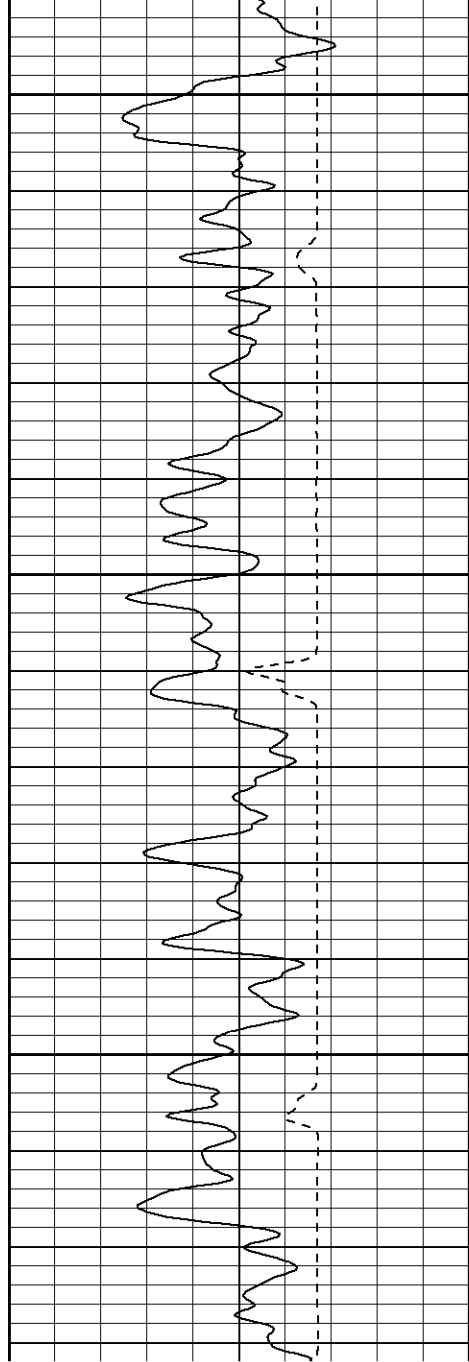


50

100

150

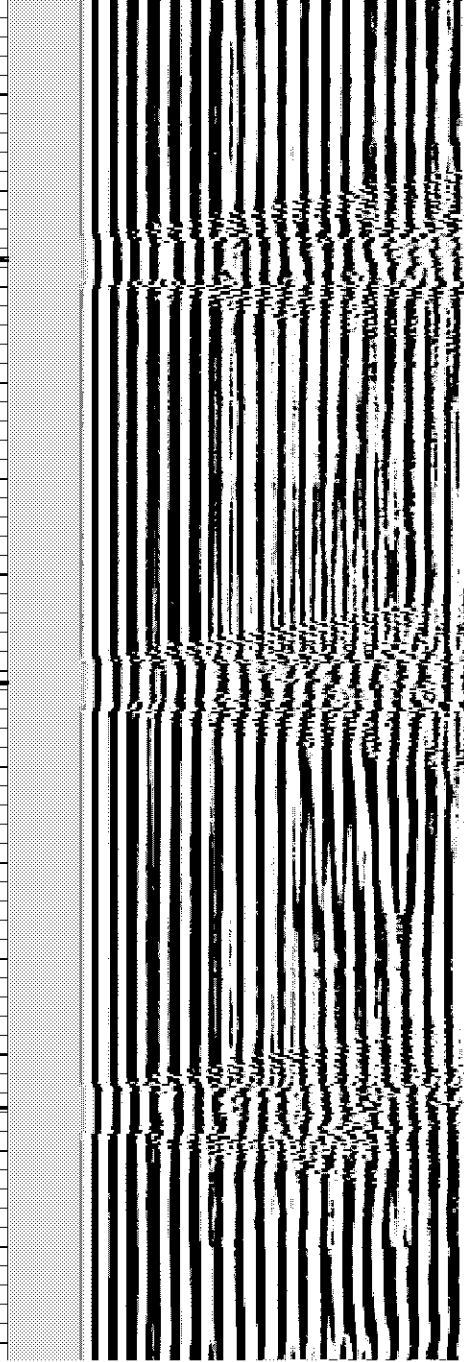
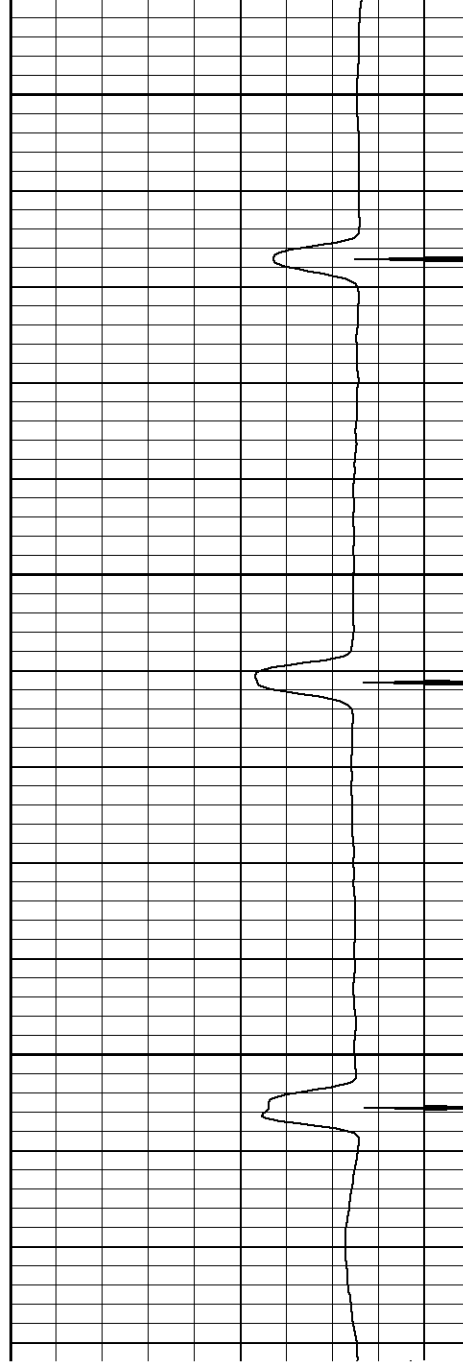


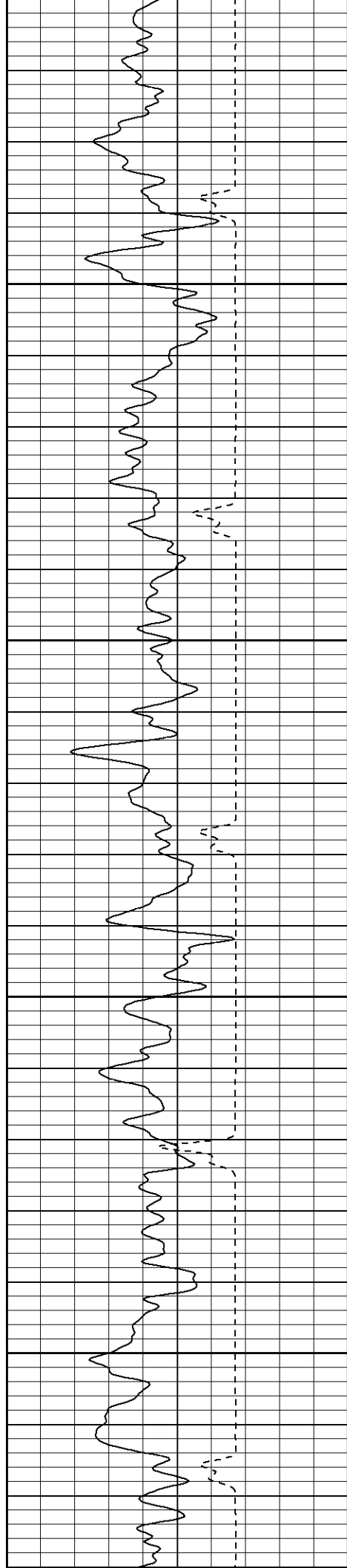


200

250

300



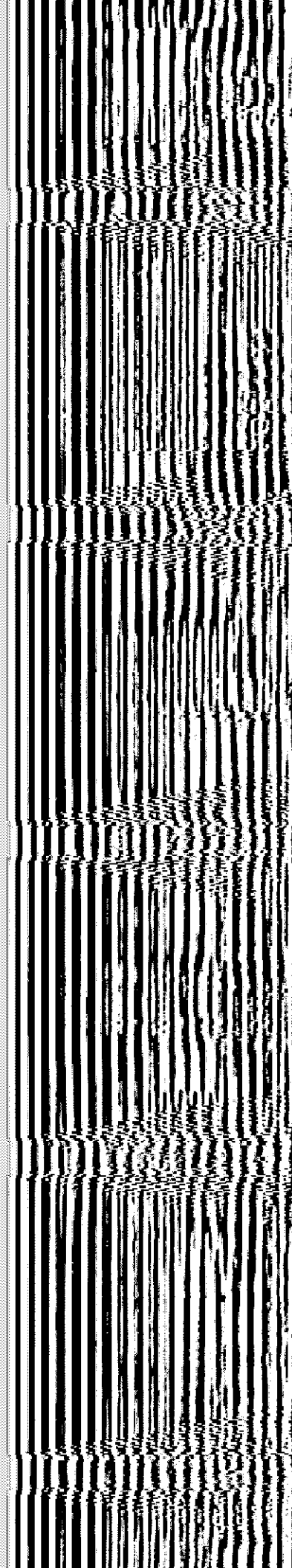
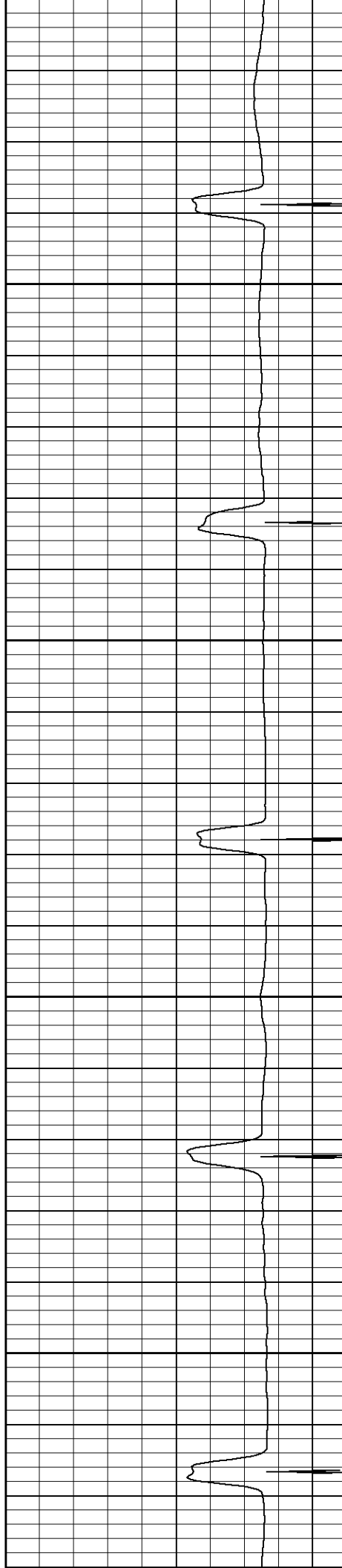


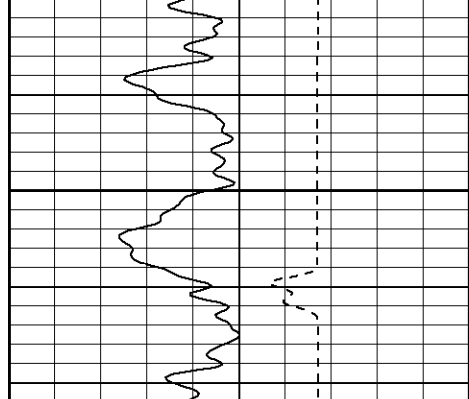
450

500

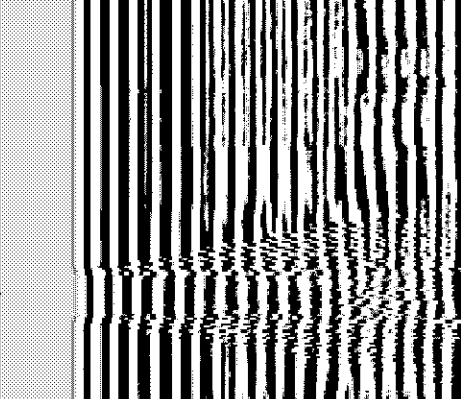
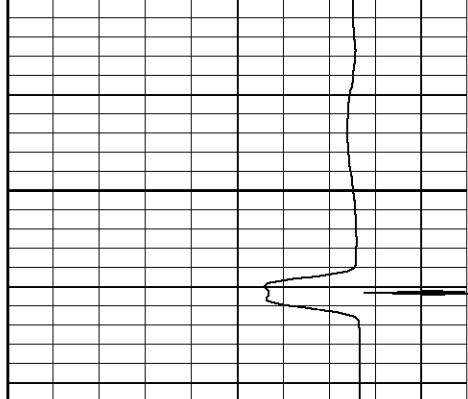
550

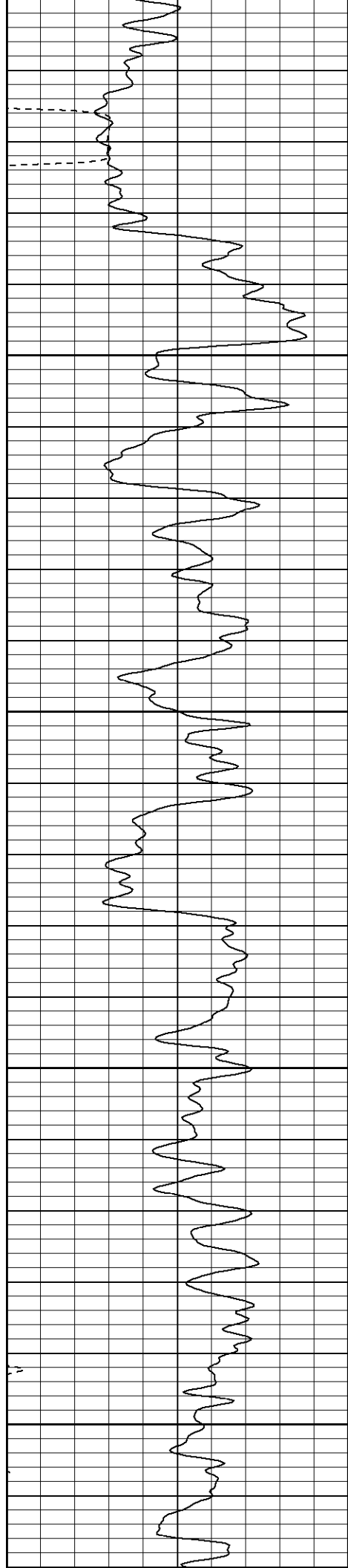
600



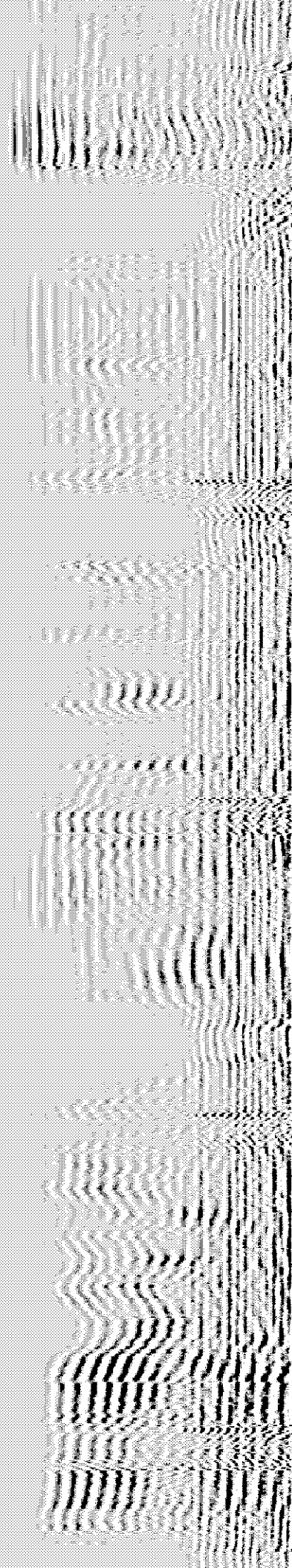
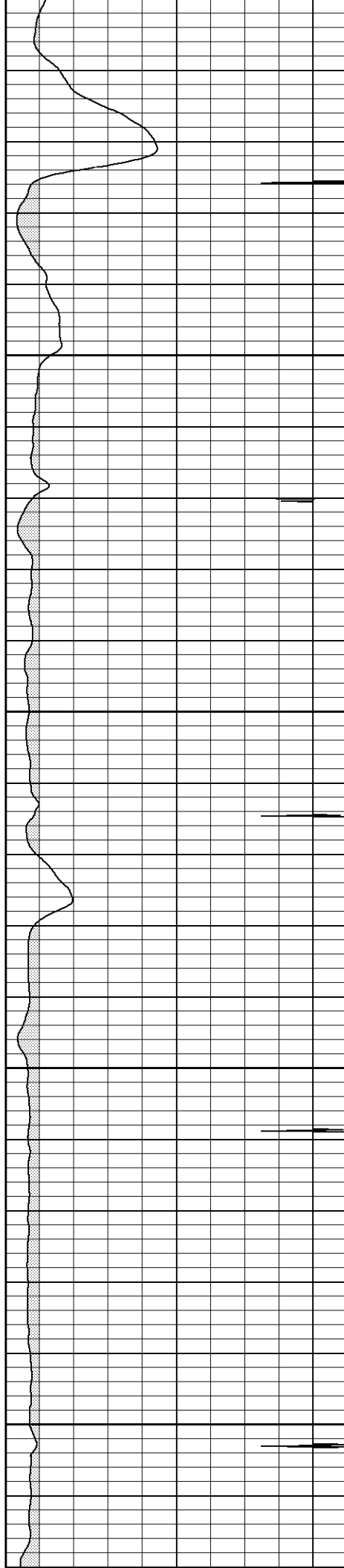


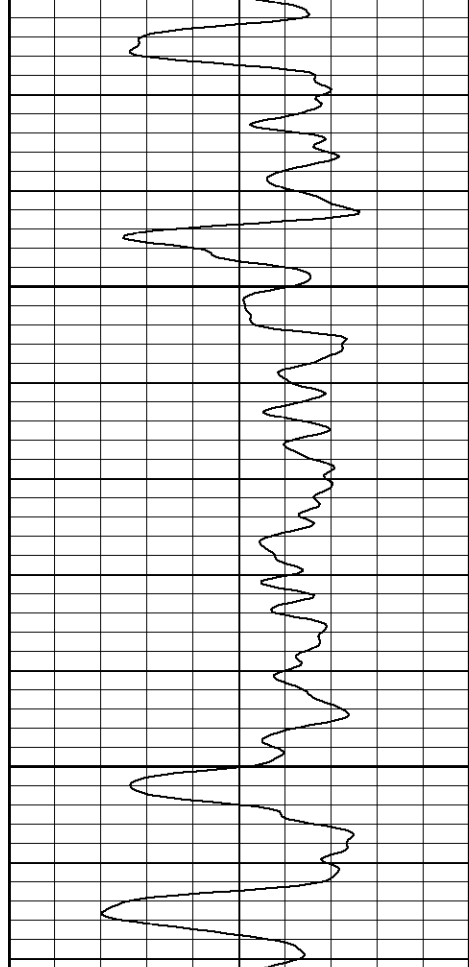
650





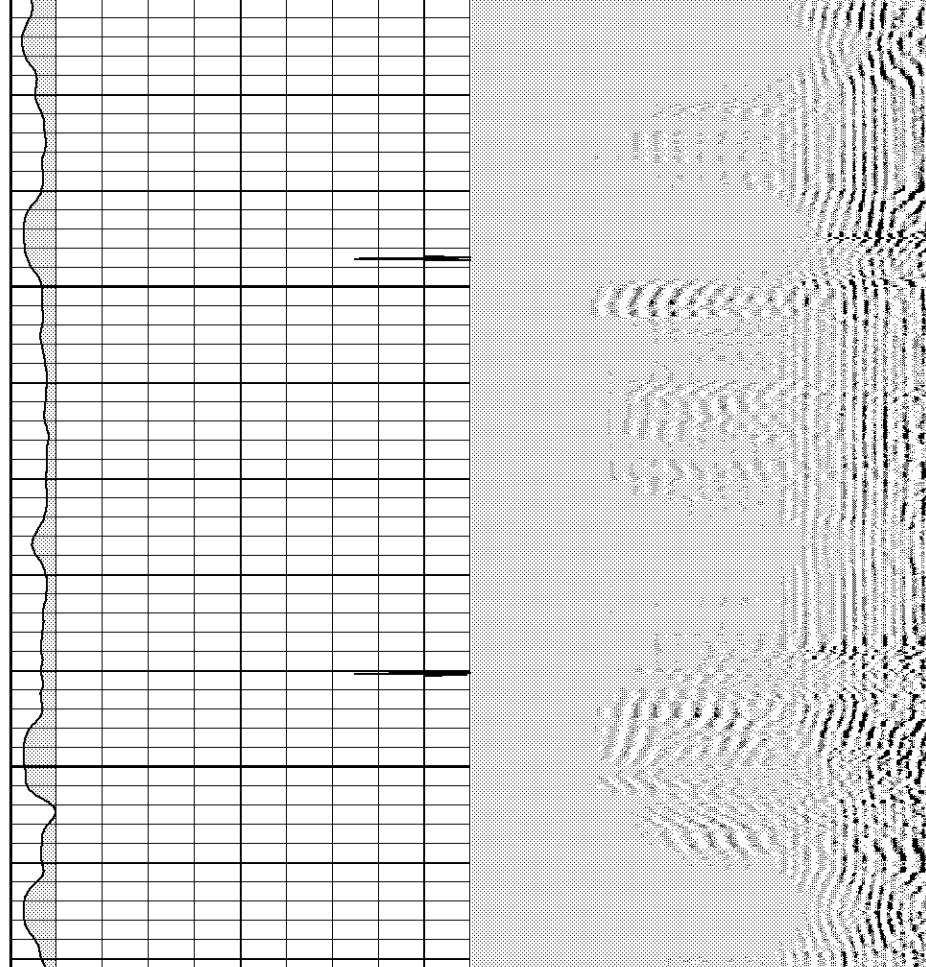
850
900
950
1000
1050

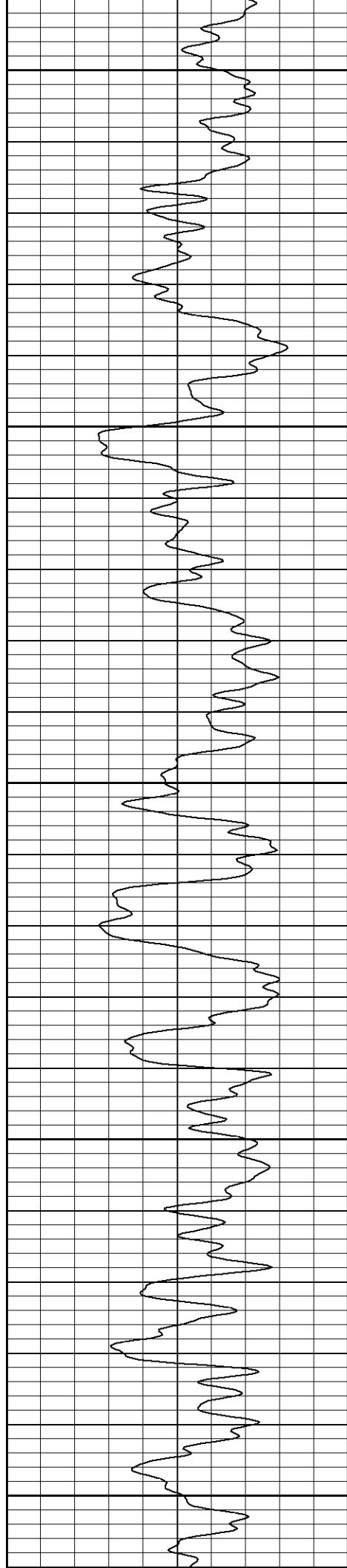




1100

1150





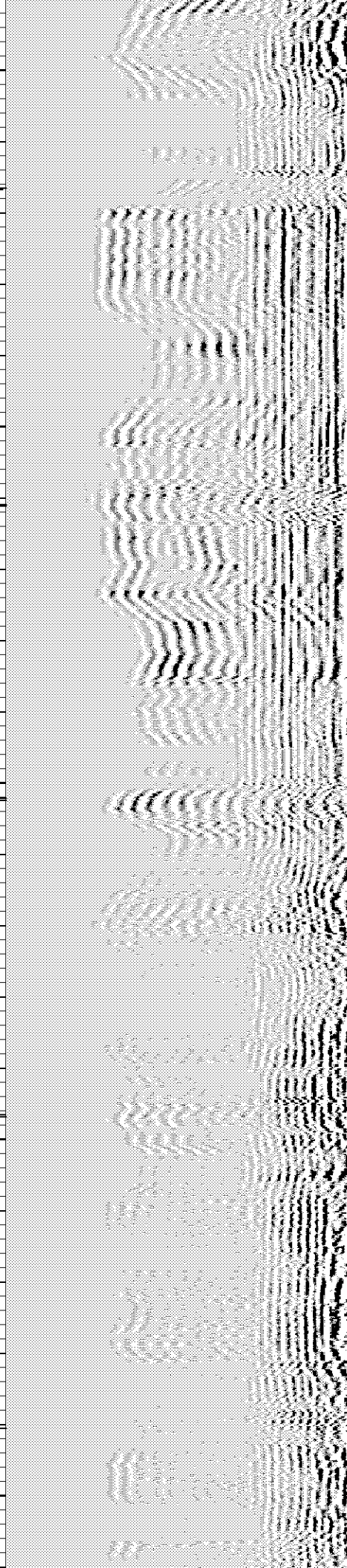
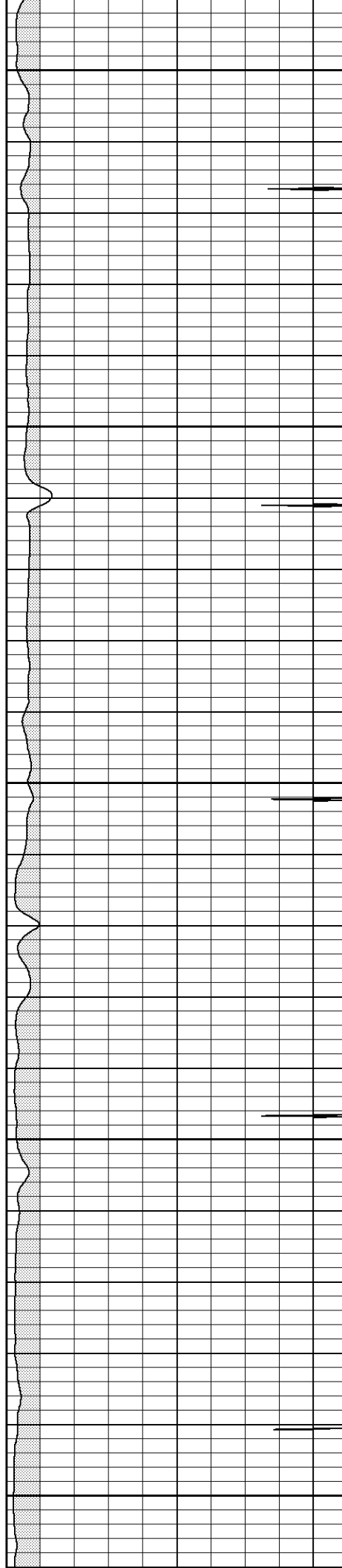
1300

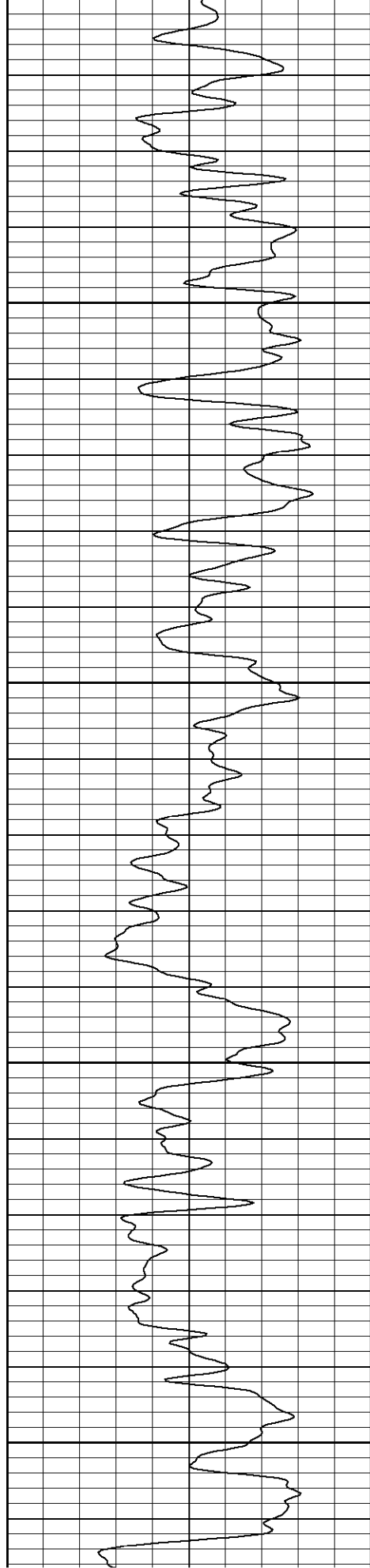
1350

1400

1450

1500



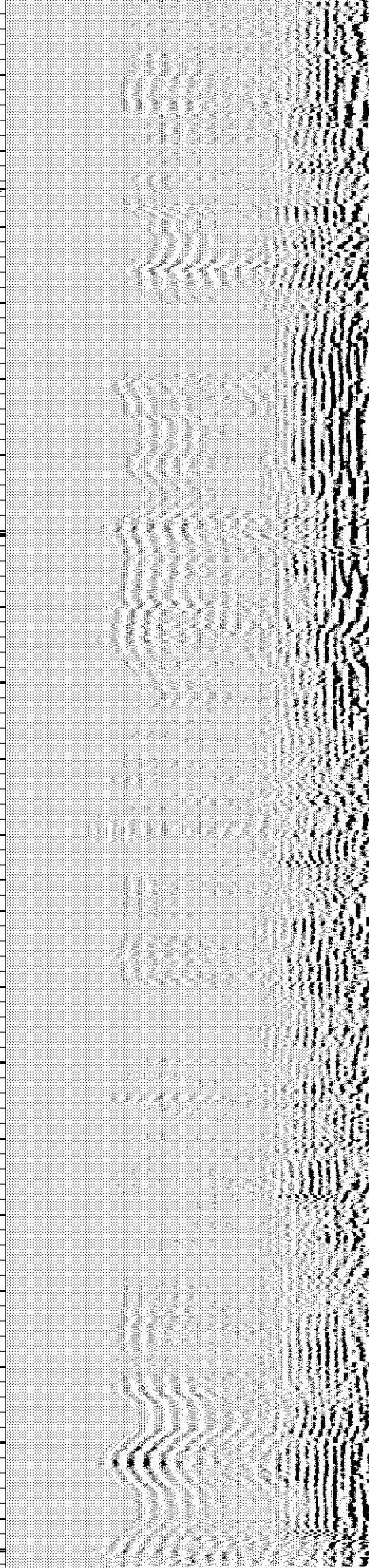
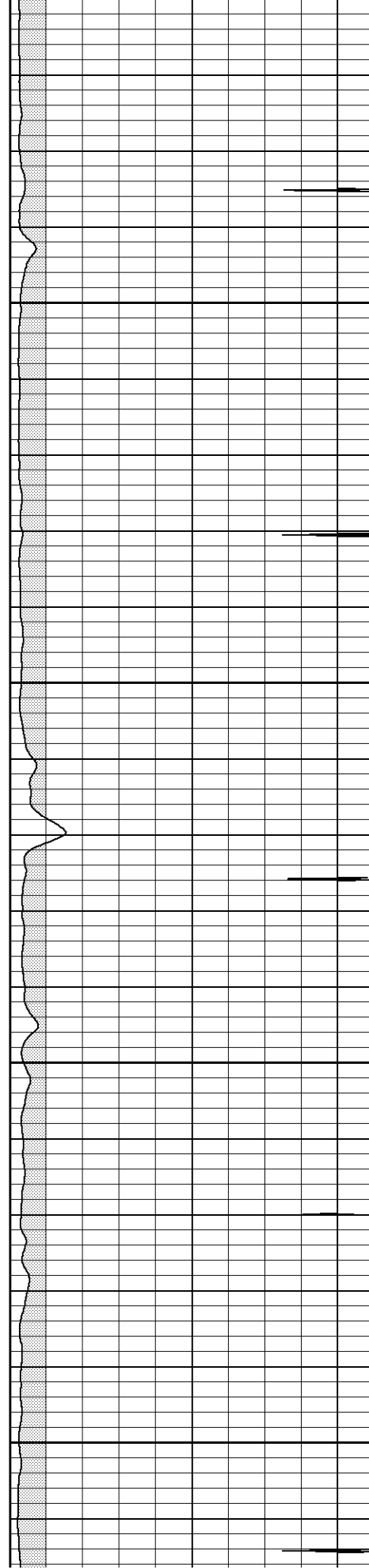


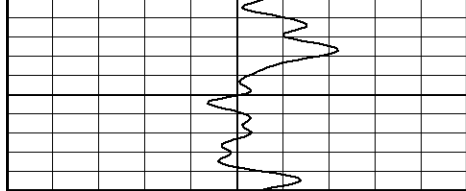
1550

1600

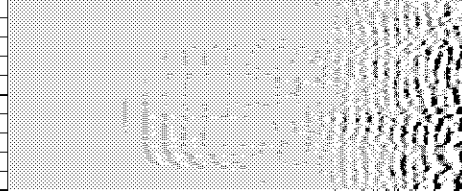
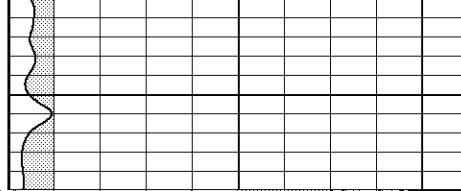
1650

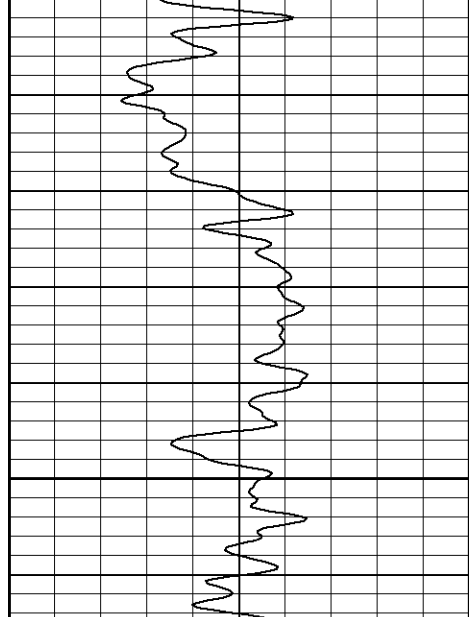
1700





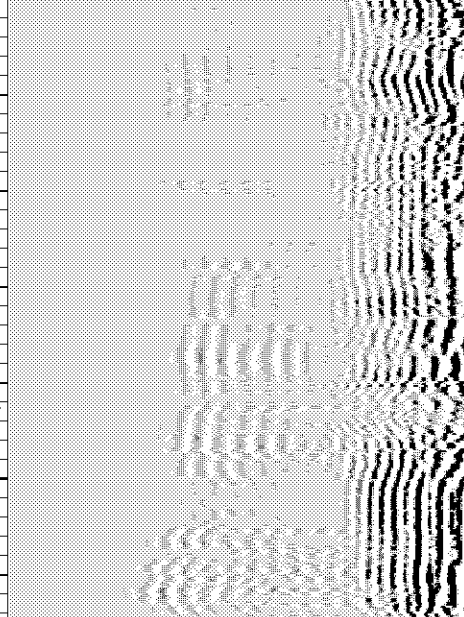
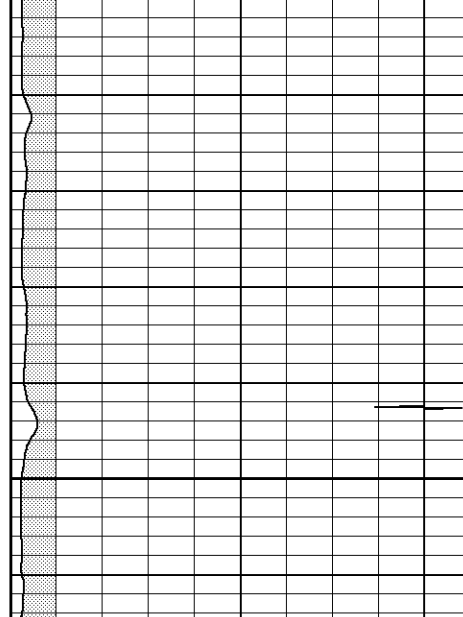
1750

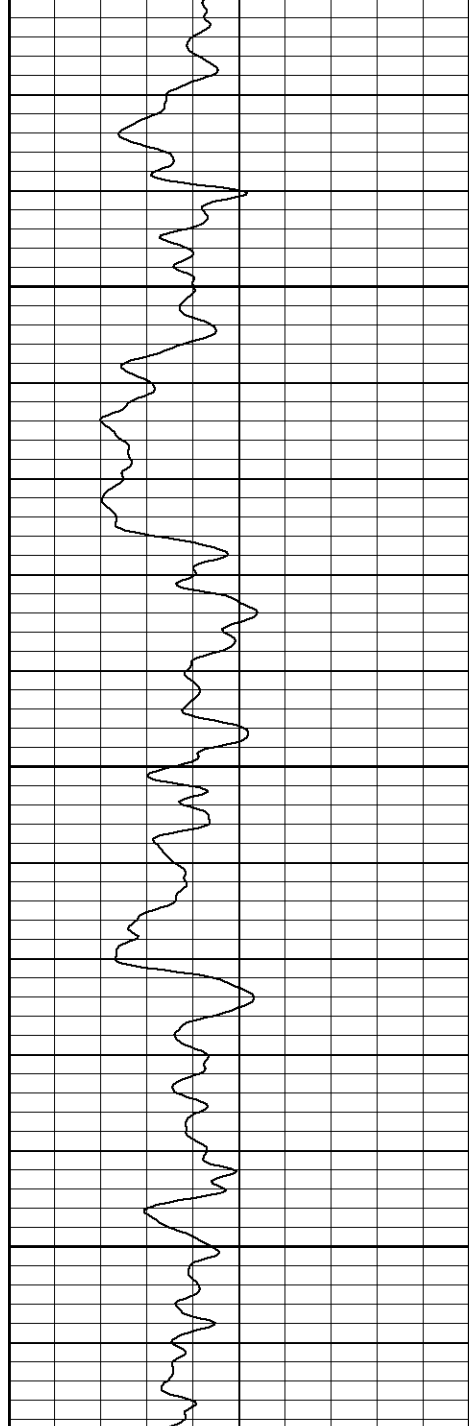




1500

2000

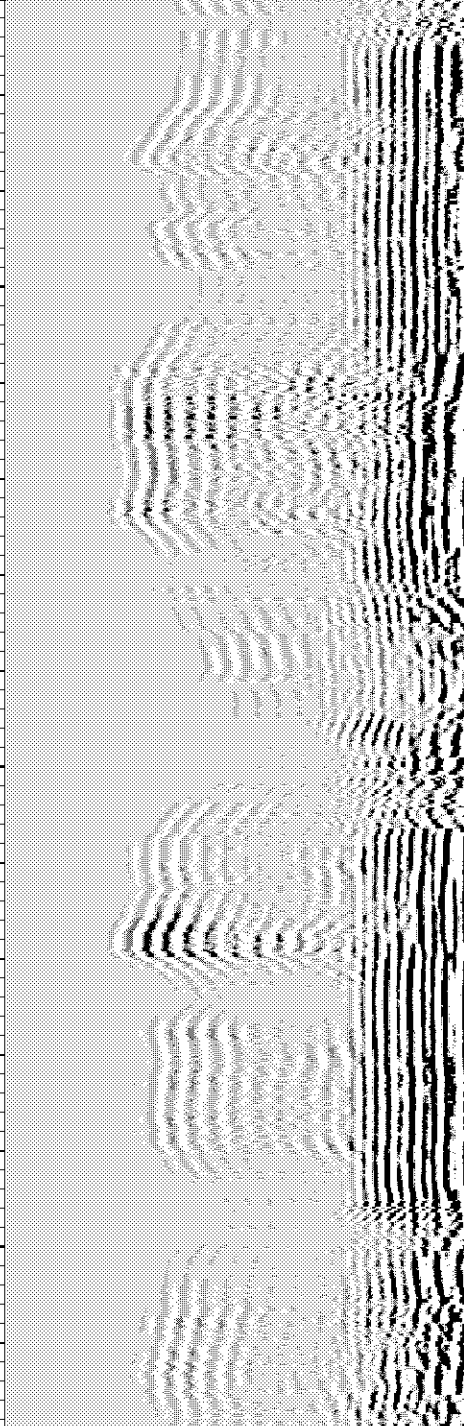
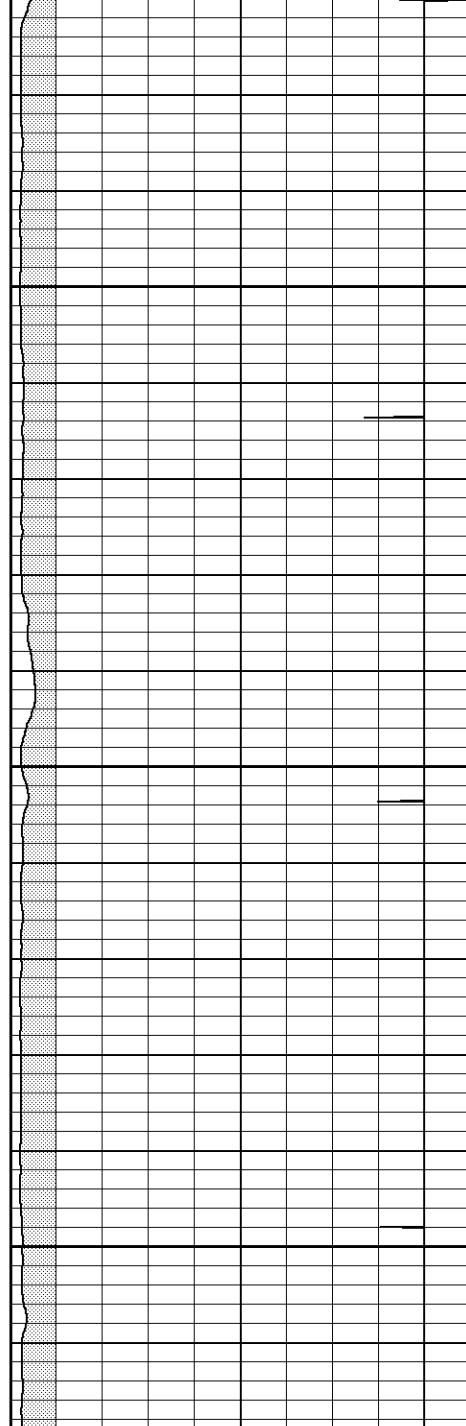


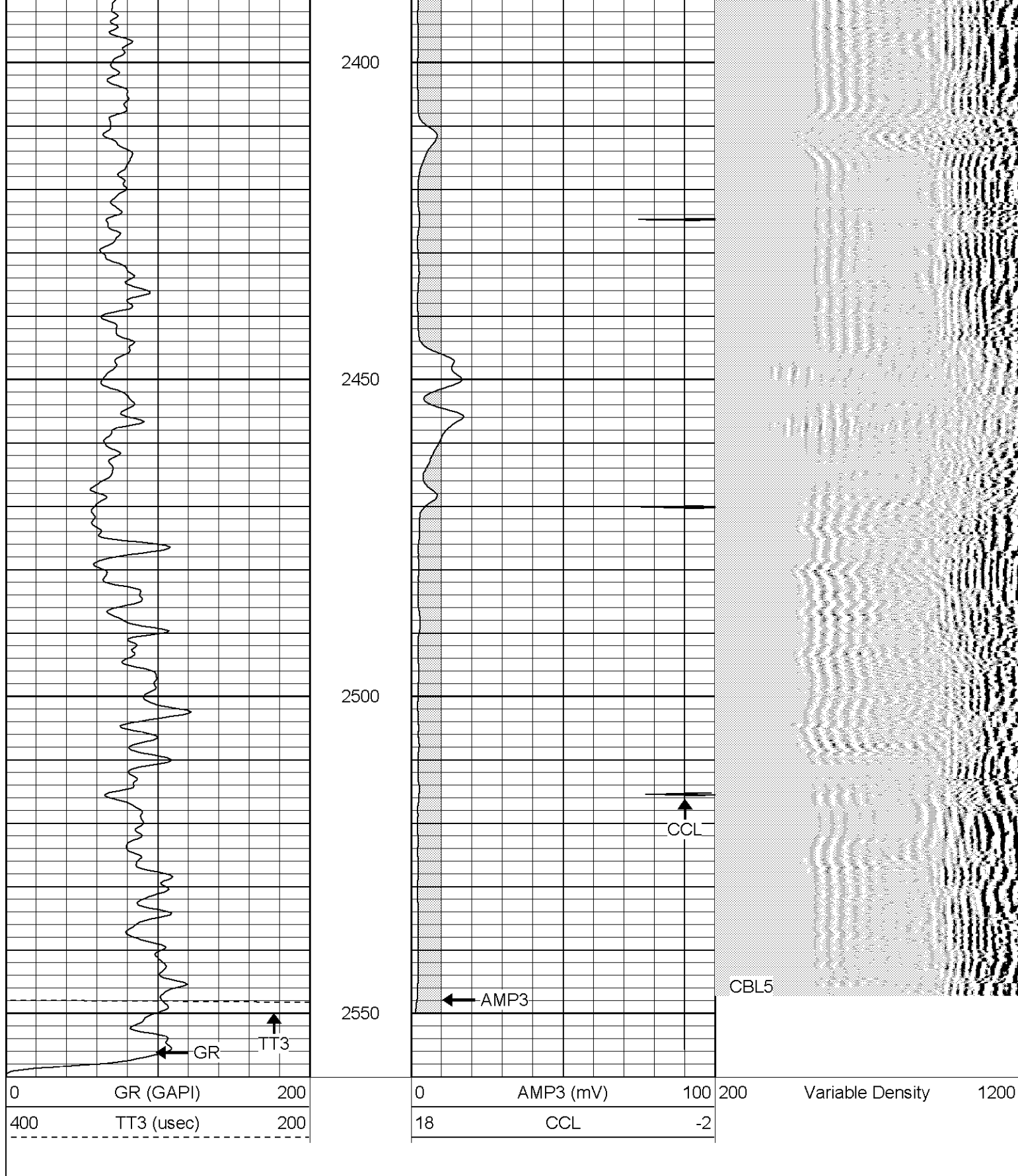


2200

2250

2300

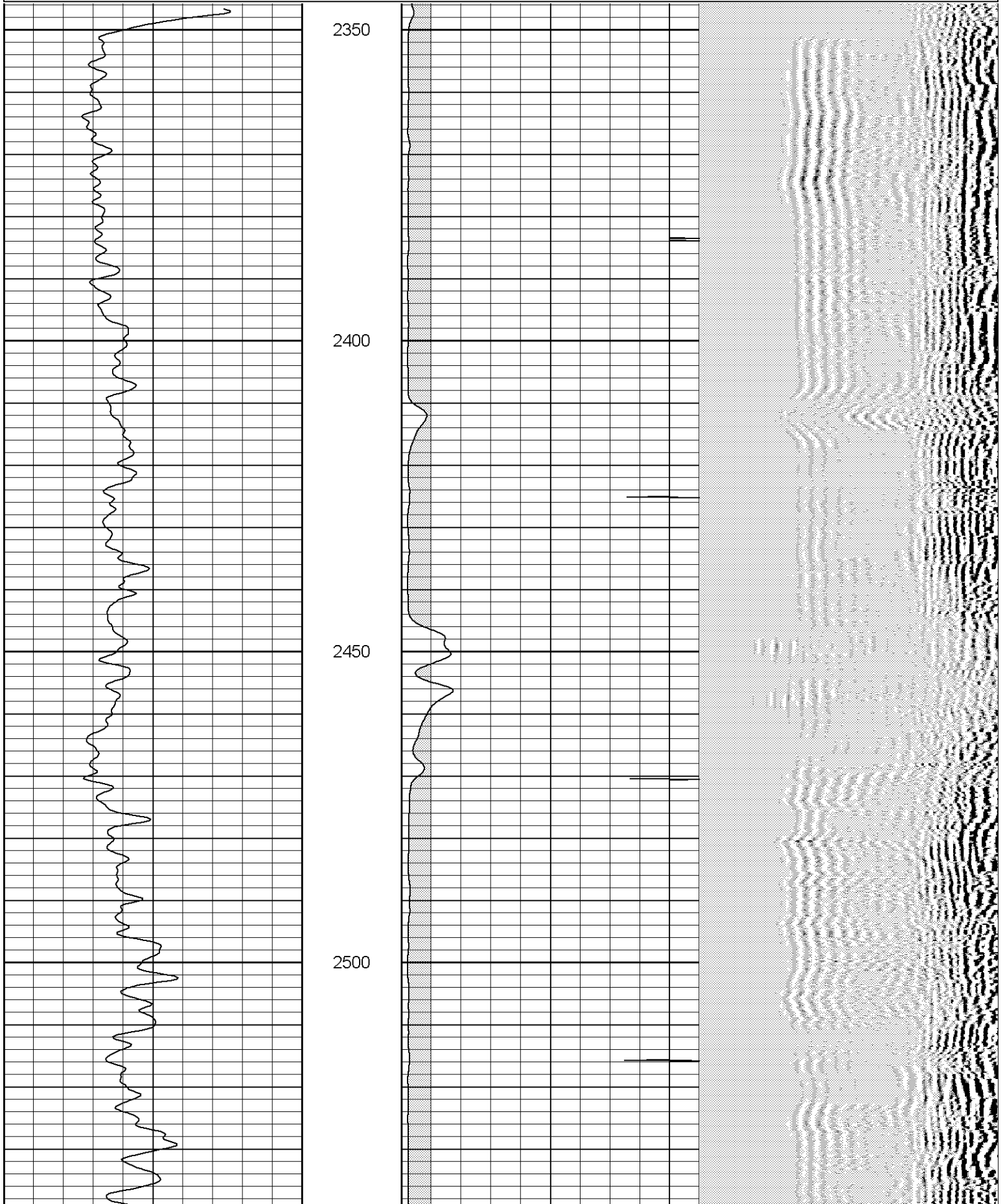


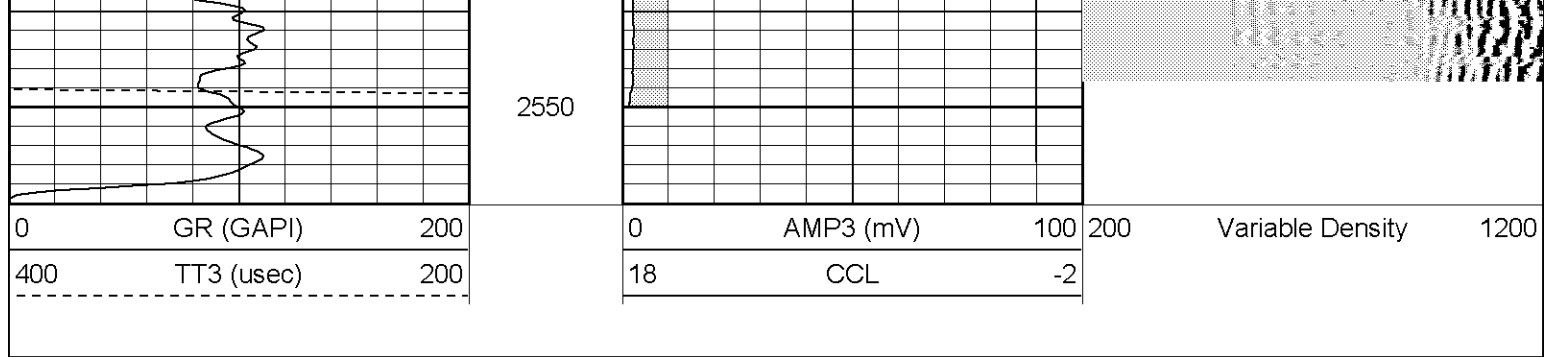


Patterson

Repeat Section

0	GR (GAPI)	200	0	AMP3 (mV)	100	200	Variable Density	1200
400	TT3 (usec)	200	18	CCL	-2			





Gamma Ray Calibration Report				
Serial Number:	2.75			
Tool Model:	Titan2.75			
Performed:	Tue Apr 04 09:15:15 2006			
Calibrator Value:	1.0	GAPI		
Background Reading:	0.0	cps		
Calibrator Reading:	1.0	cps		
Sensitivity:	0.9500	GAPI/cps		
Cement Bond Log Calibration Report				
Serial Number:	Titan4			
Tool Model:	T4			
Performed:	Wed Jul 05 15:58:04 2006			
Depth:	1421.41	ft		
Casing Diameter:	5.5	in		
	3' Spacing	5' Spacing		
Signal Zero:	1	1	mV	
Calibrated Amplitude:	85	85	mV	
Reading at Signal Zero:	-0.01	0	V	
Reading in Free Pipe:	1.25	1.75	V	
Gain:	66.6667	48		
Offset:	1.66667	1		

Sensor	Offset (ft)	Schematic	Description	Len (ft)	OD (in)	Wt (lb)
CHD	20.38		None	0.75	1.50	5.00
CENT	19.63		X	3.00	1.69	25.00
WVF5	12.82		CBL-T4 (Titan4) Titan4	8.15	2.25	110.00
WVF3	11.82					
CENT	8.48		X	3.00	1.69	25.00
CCL	4.27		CCL-Titan2.75 (2.75)	1.71	2.75	15.00
GR	1.42		GR-Titan2.75 (2.75)	3.77	2.75	40.00

		Dataset:	/field/well/run1/_plots/_jobs_/cbl			
		Total Length:	20.38 ft			
		Total Weight:	220.00 lb			
		O.D.	2.75 in			