



SUPERIOR
Black Lick, Pa.
Mercer, Pa.
Wooster, Oh.
Cleveland, Ok.
Trinidad, Co.

COMPENSATED DENSITY NEUTRON LOG

Company XTO Energy Inc.
Well Golden Eagle 29-11
Field Purgatoire River
County Las Animas State Colorado

Location: API # : 05 071 09106 00

1673' FSL & 2145' FWL

DIL

SEC 29 TWP 33S RGE 67W

Permanent Datum	Ground Level	Elevation	7251'
Log Measured From	Ground Level		
Drilling Measured From	Ground Level		

Elevation
K.B. -----
D.F. -----
G.L. 7251'

Date 2-14-07

Run Number Two

Depth Driller 1915'

Depth Logger 1918'

Bottom Logged Interval 1916'

Top Log Interval Surface Casing

Casing Driller 8 5/8" @ 738'

Casing Logger 738'

Bit Size 7 7/8"

Type Fluid in Hole Water

Density / Viscosity ///

pH / Fluid Loss ///

Source of Sample ///

Rm @ Meas. Temp ///

Rmf @ Meas. Temp ///

Rmc @ Meas. Temp ///

Source of Rmf / Rmc ///

Rm @ BHT ///

Time Circulation Stopped 3:00 A.M.

Time Logger on Bottom 5:30 A.M.

Maximum Recorded Temperature 91 DEG F

Equipment Number T0697

Location Trinidad

Recorded By M. Norton

Witnessed By Mr. Don Johnson

>>> Fold Here >>>

All interpretations are opinions based on inferences from electrical or other measurements and we cannot and do not guarantee the accuracy or correctness of any interpretation, and we shall not, except in the case of gross or willful negligence on our part, be liable or responsible for any loss, costs, damages, or expenses incurred or sustained by anyone resulting from any interpretation made by any of our officers, agents or employees. These interpretations are also subject to our general terms and conditions set out in our current Price Schedule.

Comments

Neutron Density Porosity Presented On Sandstone Matrix.
ABHV Calculated For 5 1/2" Casing.
Well Directions:
Second Bosque entrance four miles past Weston turn left,
at Y stay left on Ciruele Canyon, first drive thru location.

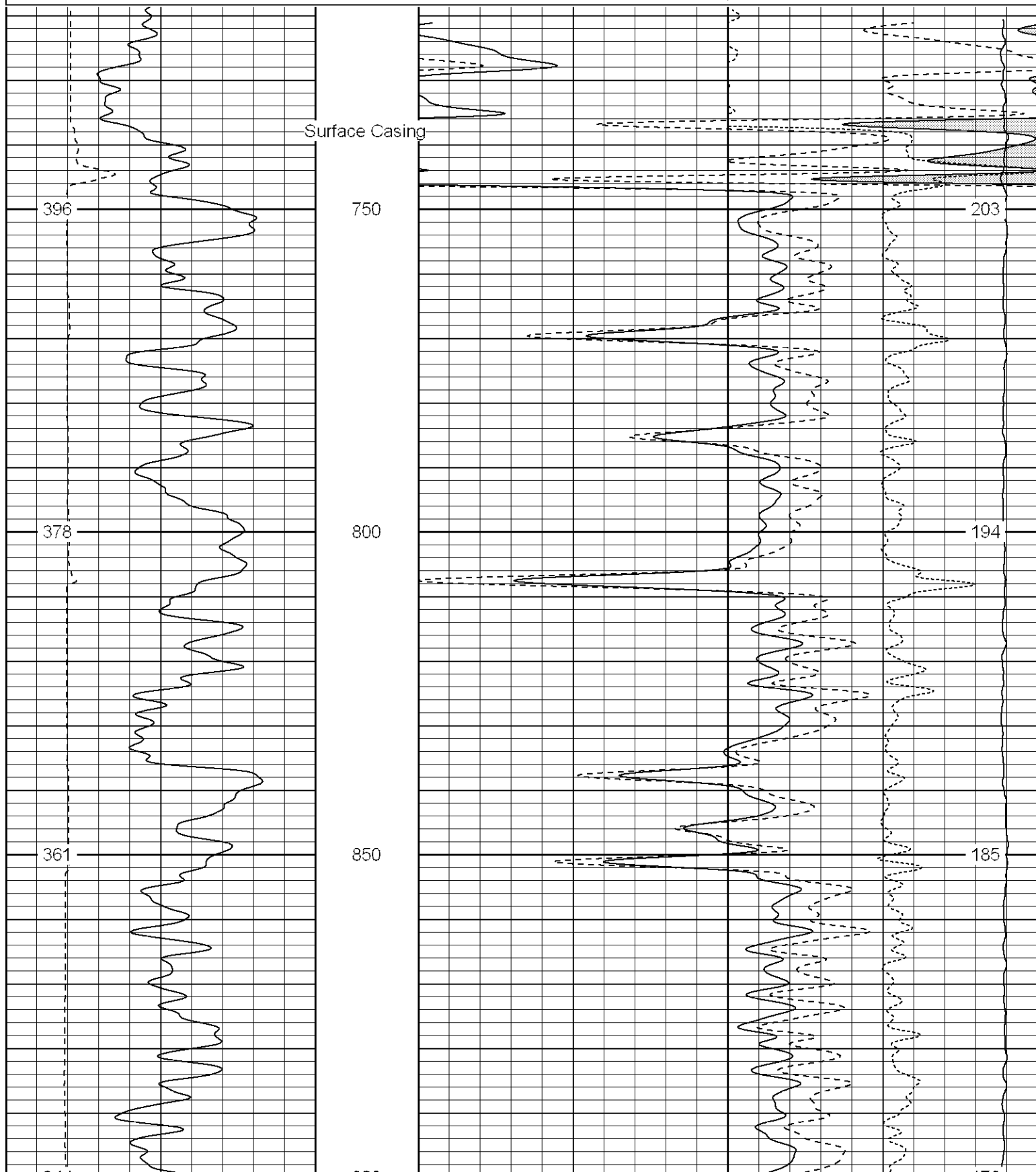


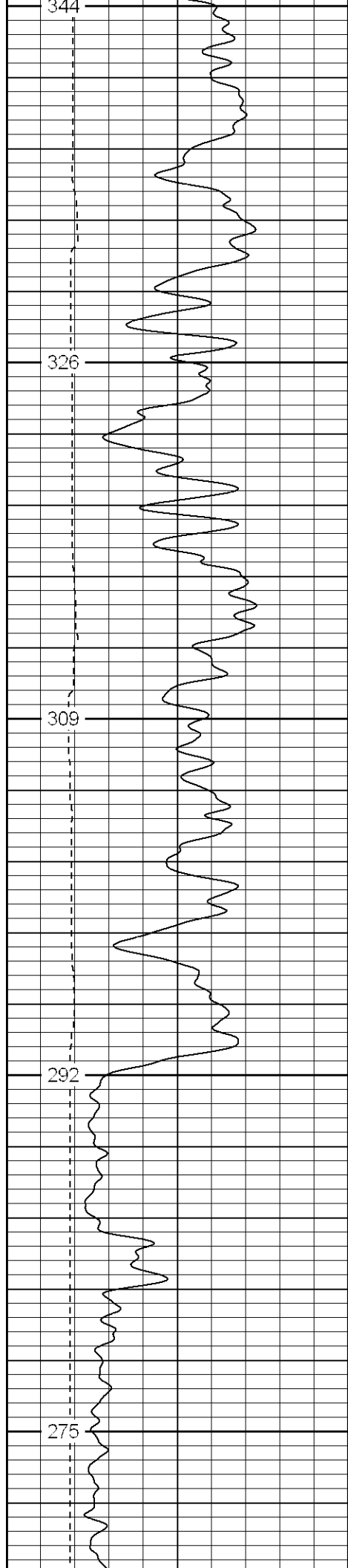
SUPERIOR
Black Lick, Pa.
Mercer, Pa.
Wooster, Oh.
Cleveland, Ok.
Trinidad, Co.

Main Pass

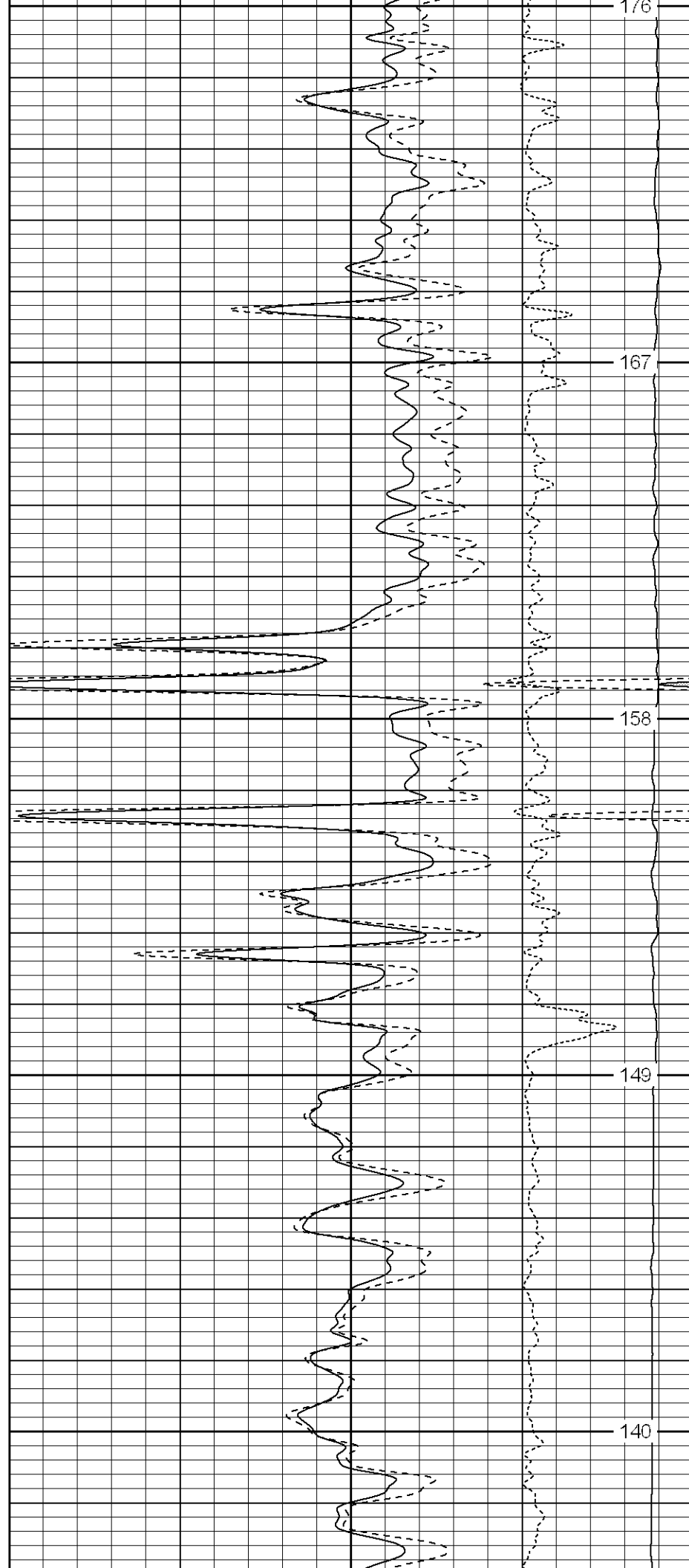
Database File: xtoge2911.db
Dataset Pathname: pass4.1
Presentation Format: cdl
Dataset Creation: Wed Feb 14 06:42:44 2007 by Calc Open-Cased 061129
Charted by: Depth in Feet scaled 1:240

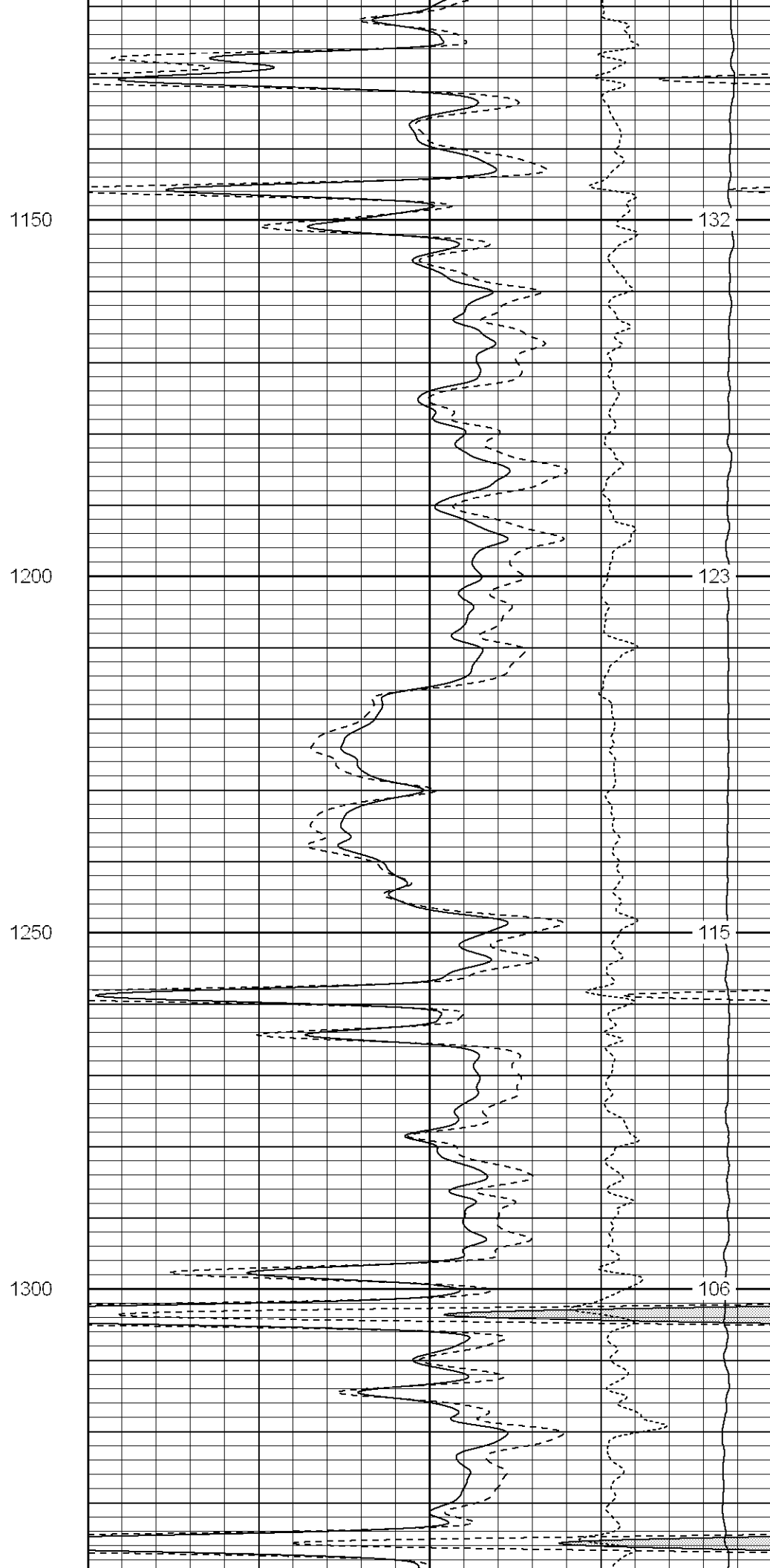
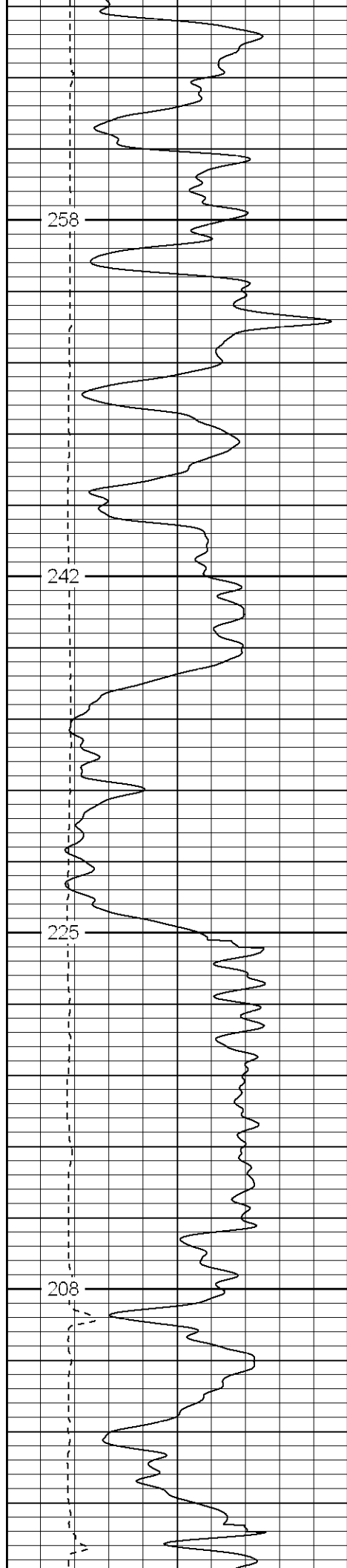
0	GR (GAPI)	200	1	RHOB (g/cc)	2
6	DCAL (in)	16	30	DPOR (pu)	-10
			-0.5	RHOC (g/cc)	0.5
			4000	LTEN (lb)	0

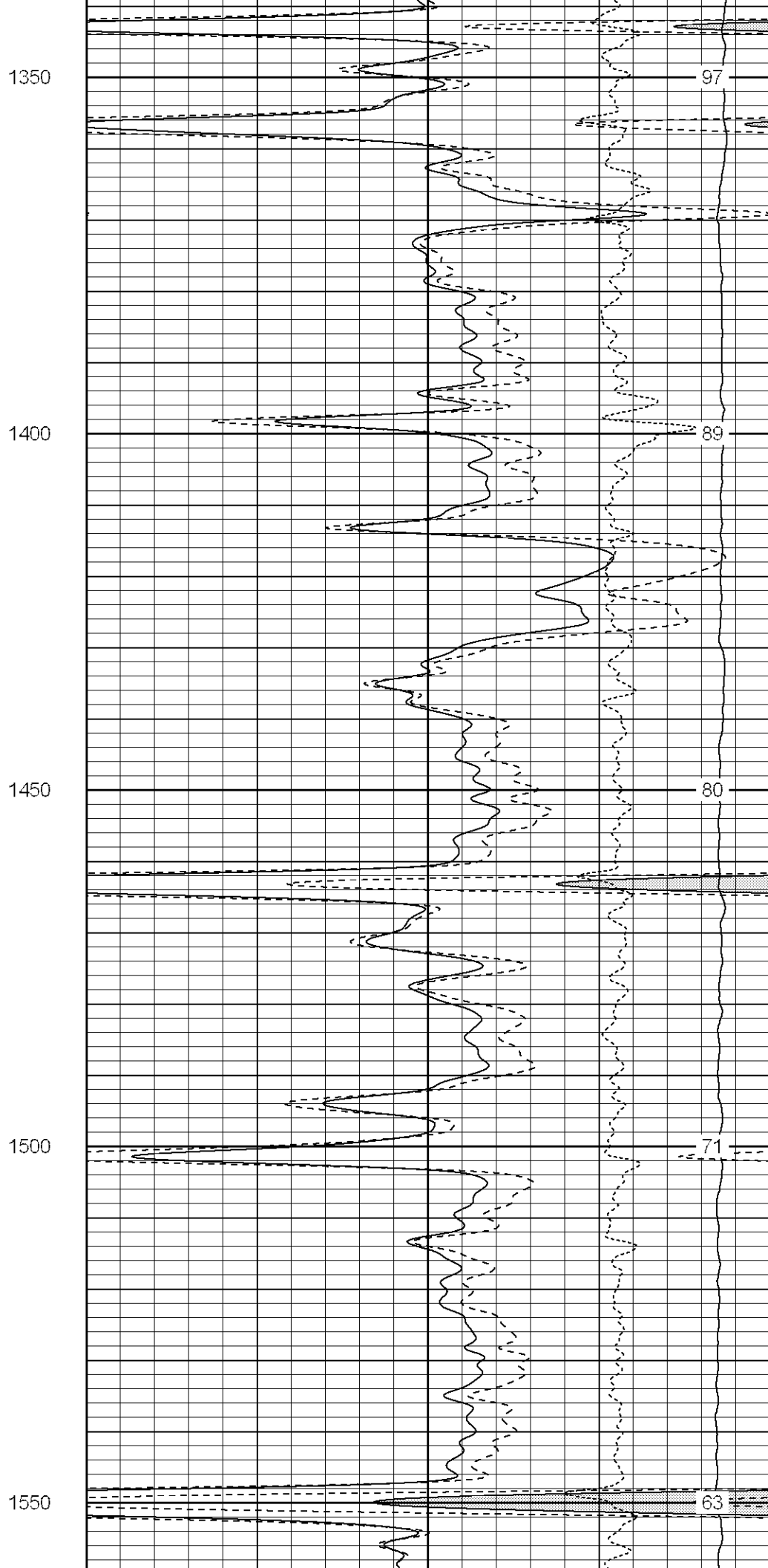
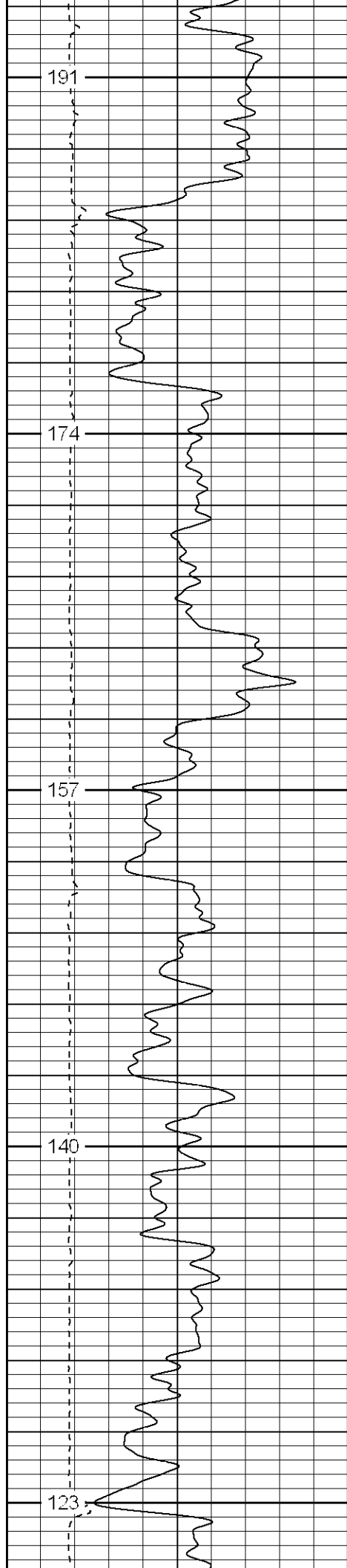


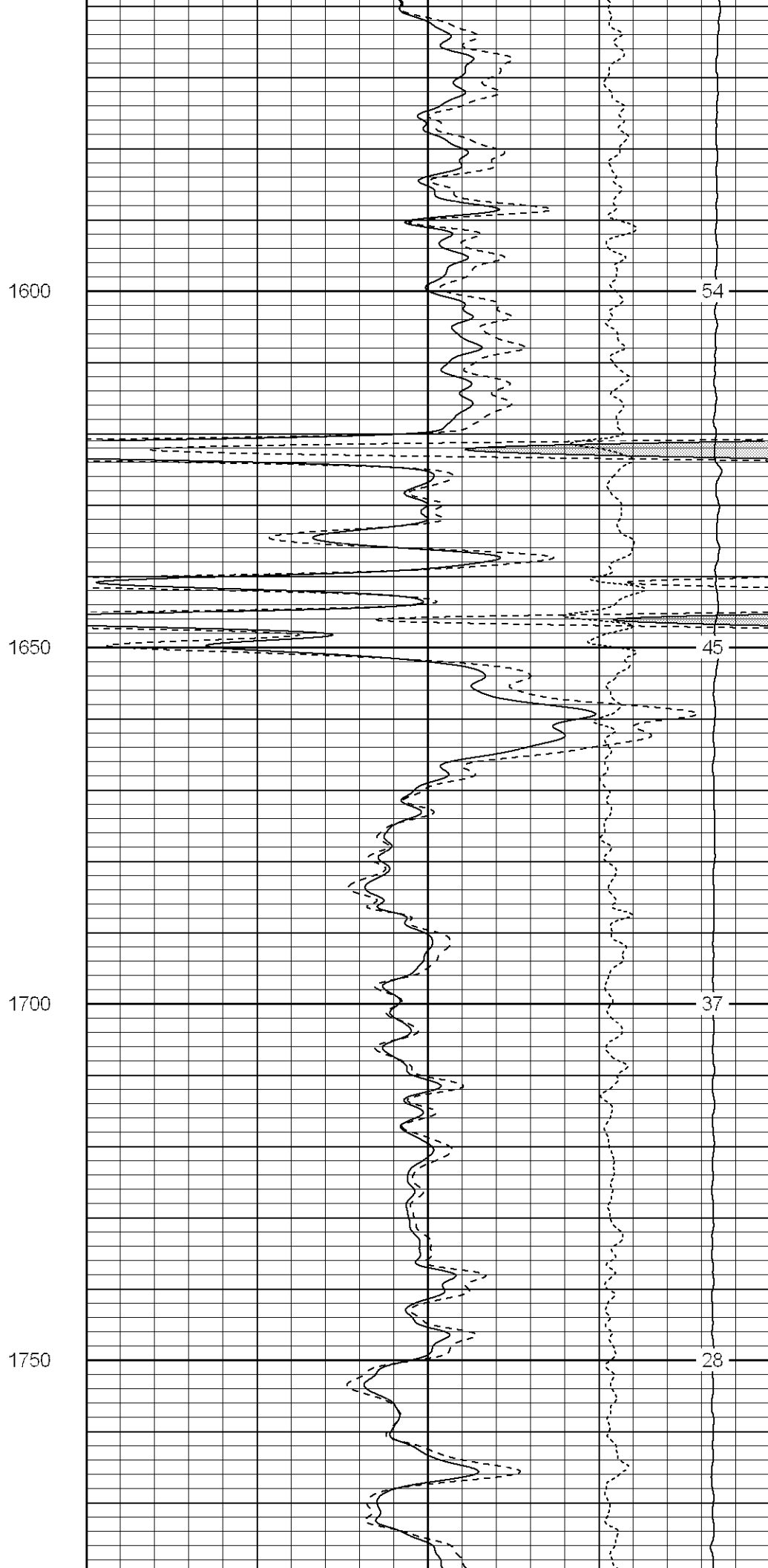
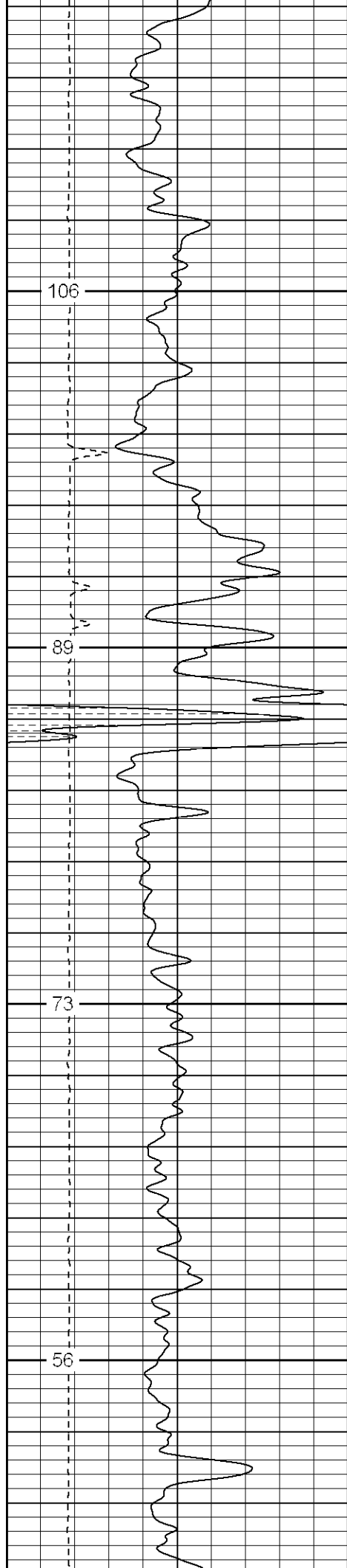


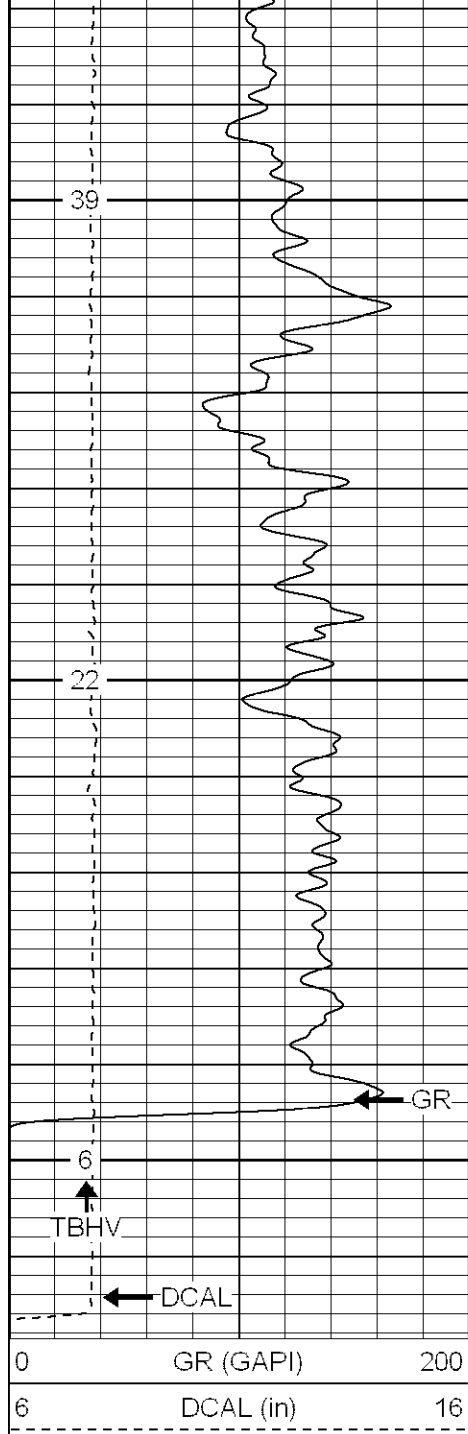
900
950
1000
1050
1100







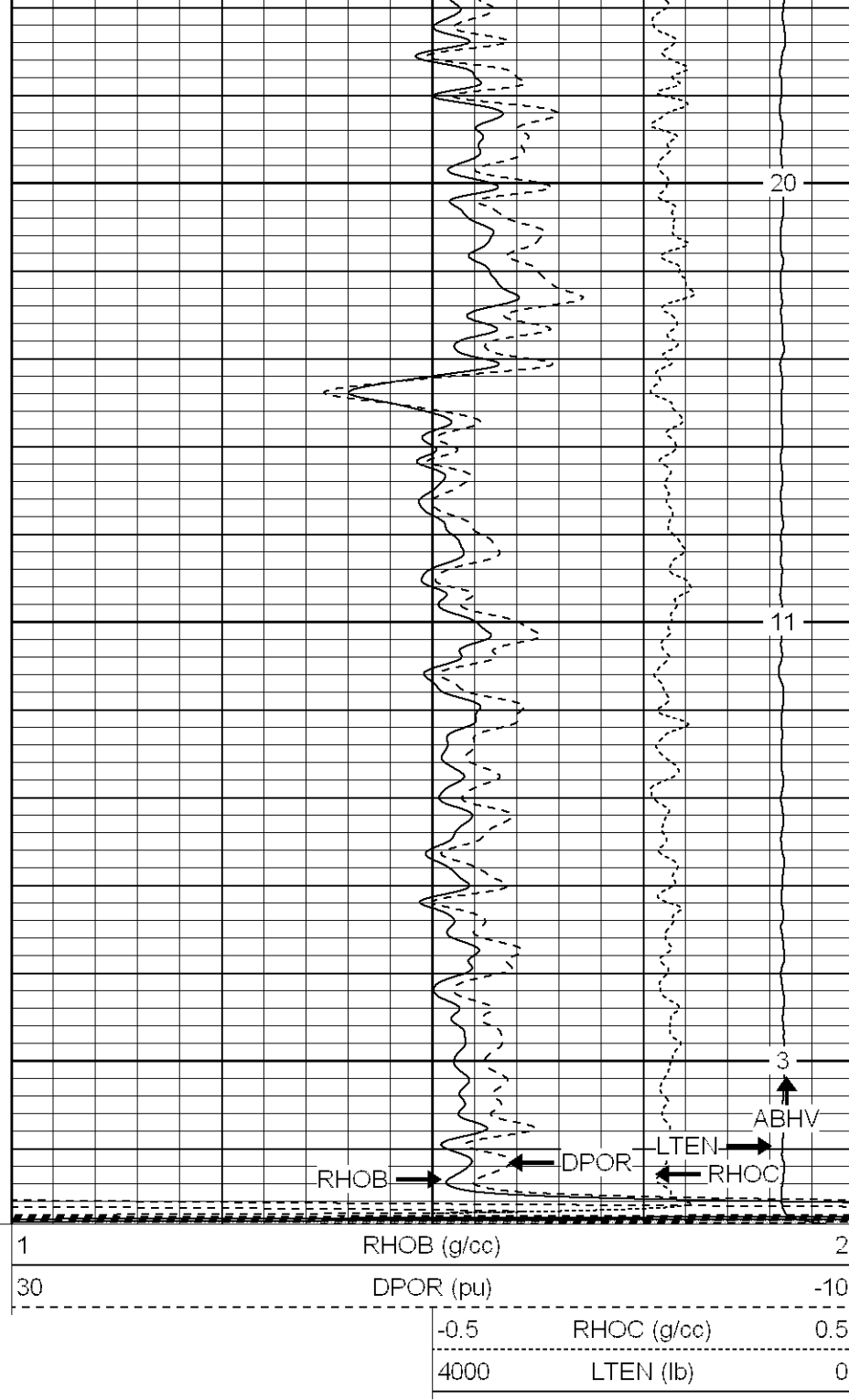




1800

1850

1900



SUPERIOR

Black Lick, Pa.
Mercer, Pa.
Wooster, Oh.
Cleveland, Ok.
Trinidad, Co.

Main Pass

Database File: xtoge2911.db
Dataset Pathname: pass4.1
Presentation Format: cdnl
Dataset Creation: Wed Feb 14 06:42:44 2007 by Calc Open-Cased 061129
Charted by: Depth in Feet scaled 1:240

0	GR (GAPI)	200
6	DCAL (in)	16

30	NPOR (pu)	-10
30	DPOR (pu)	-10
-0.5	RHOC (g/cc)	0.5

Surface Casing

750

203

800

194

AIR

850

185

900

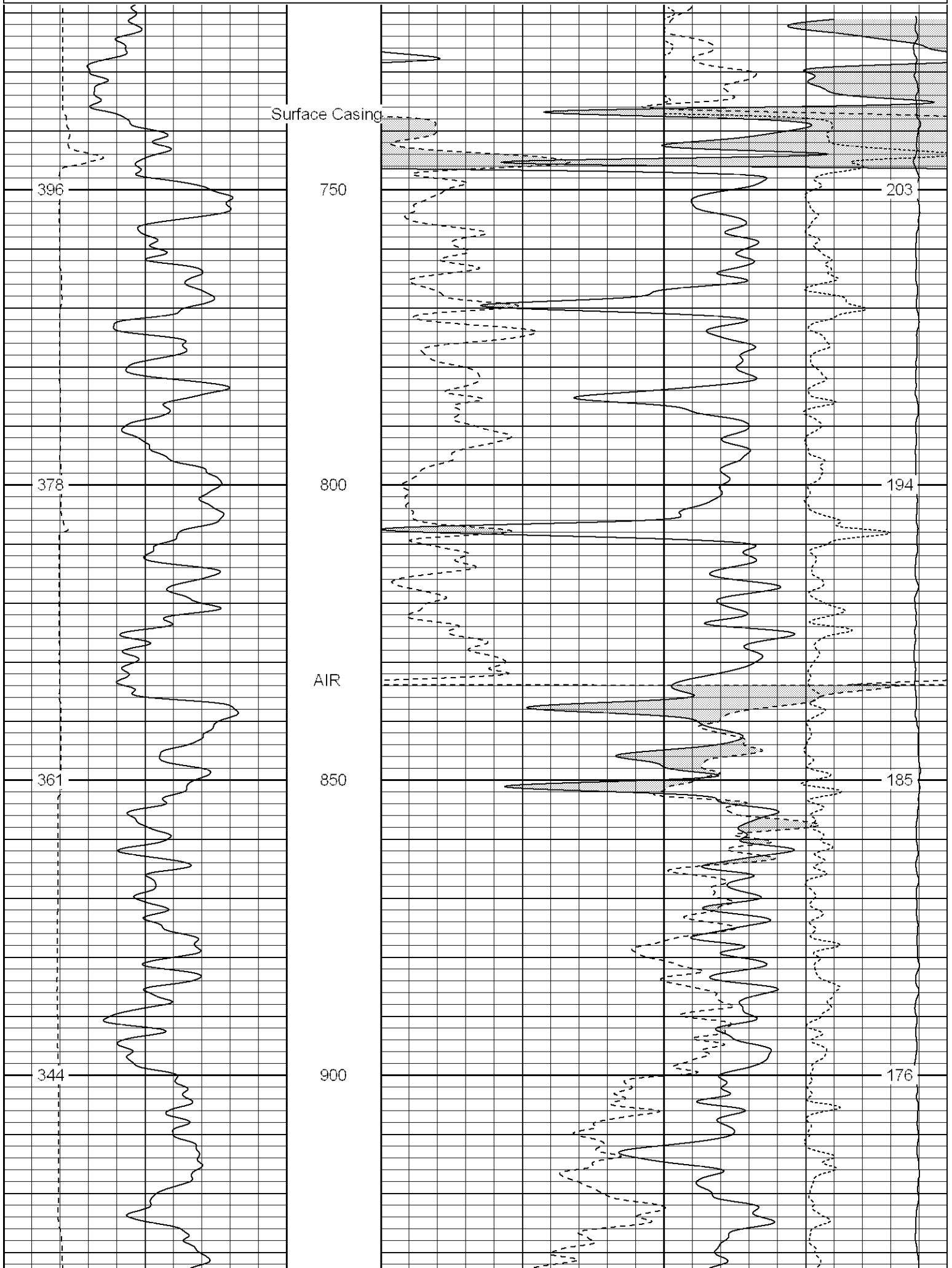
176

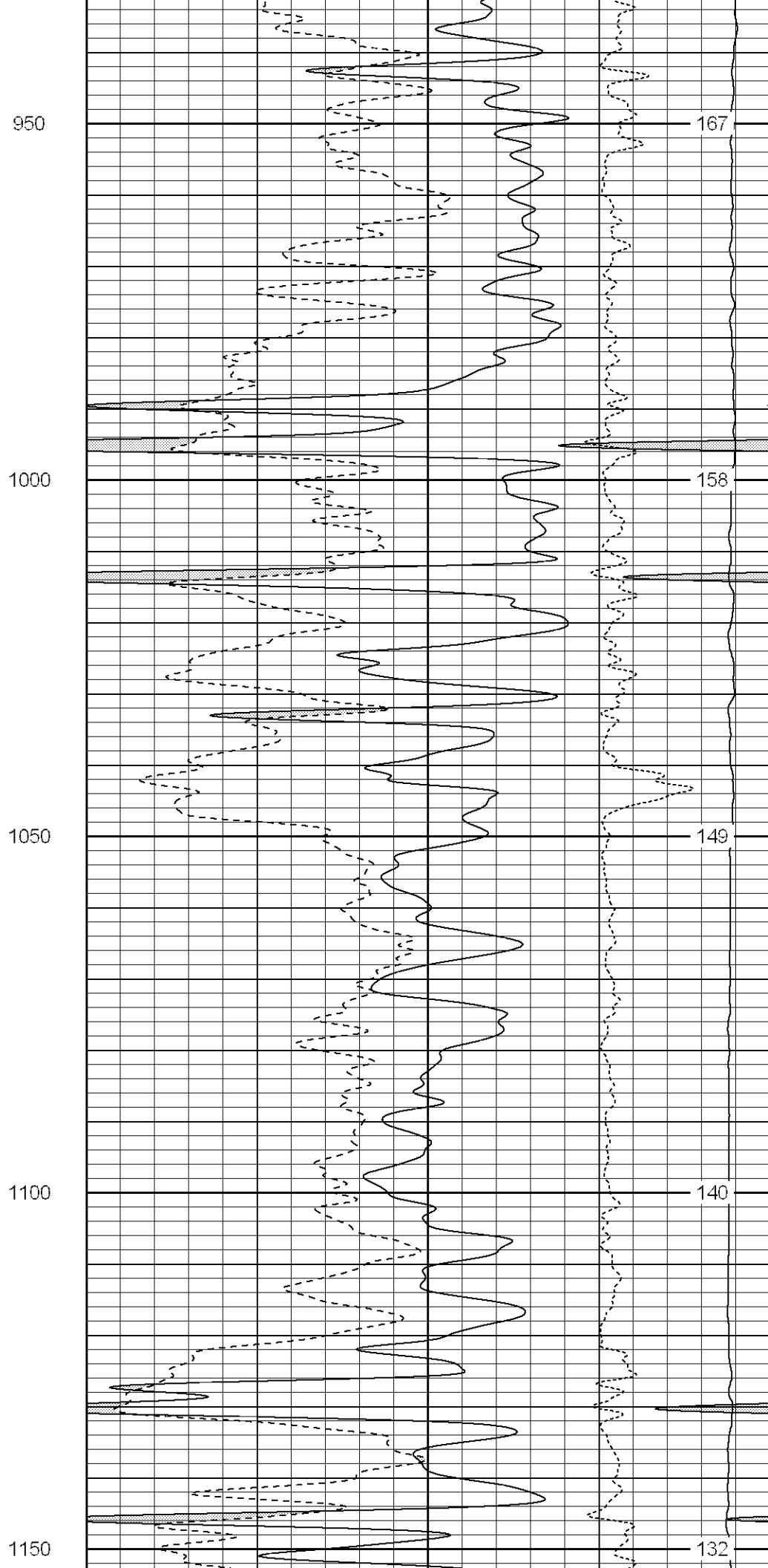
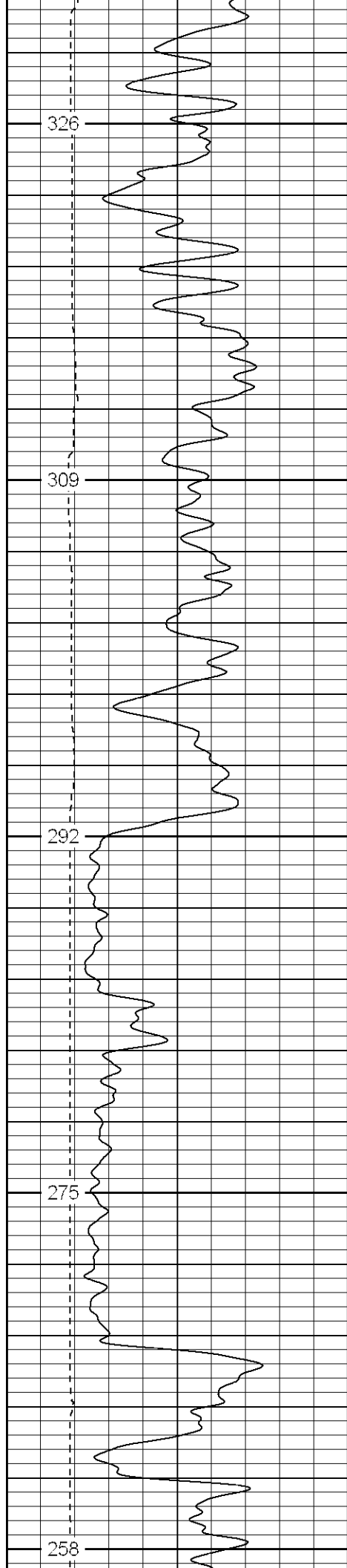
396

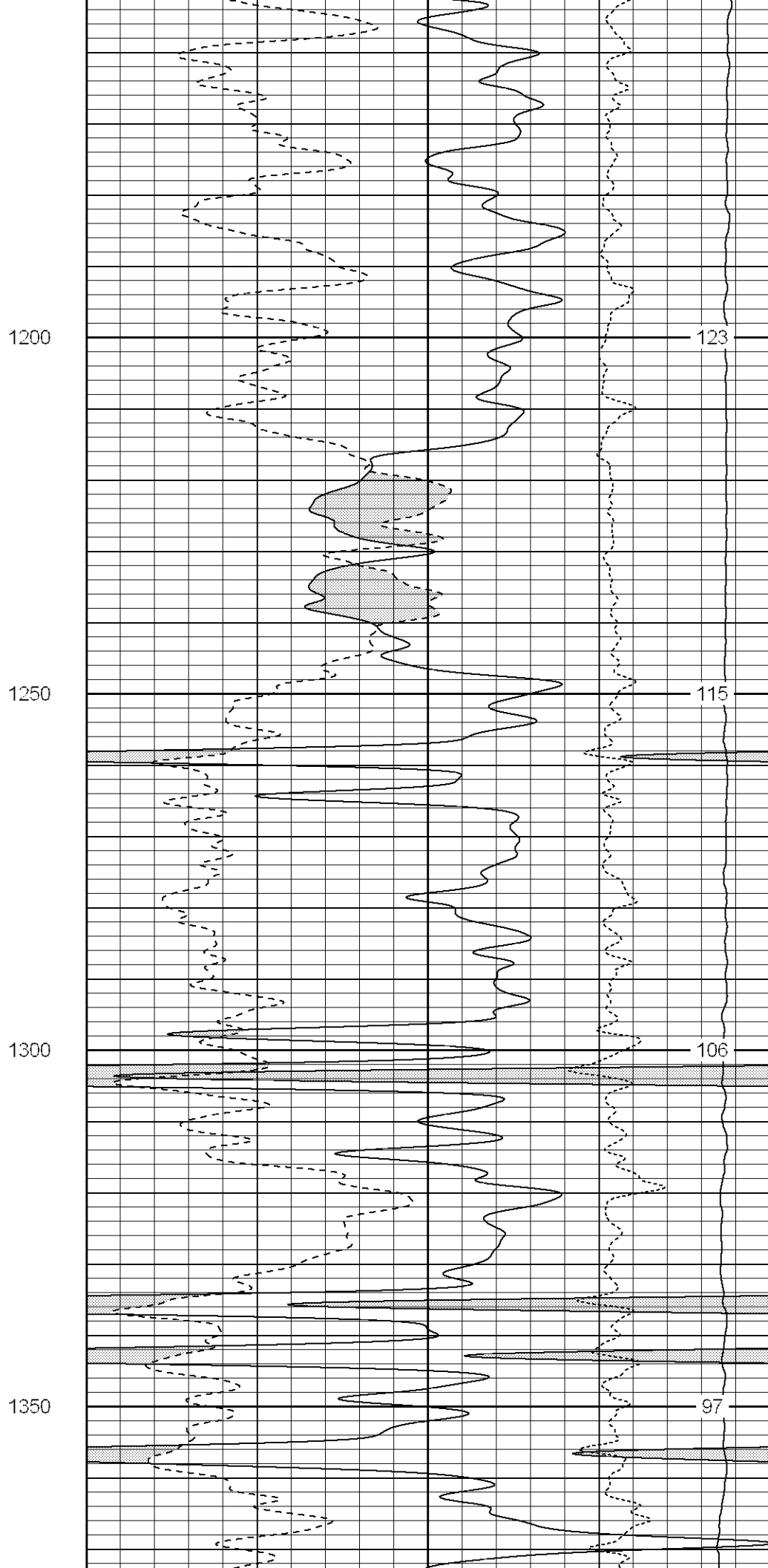
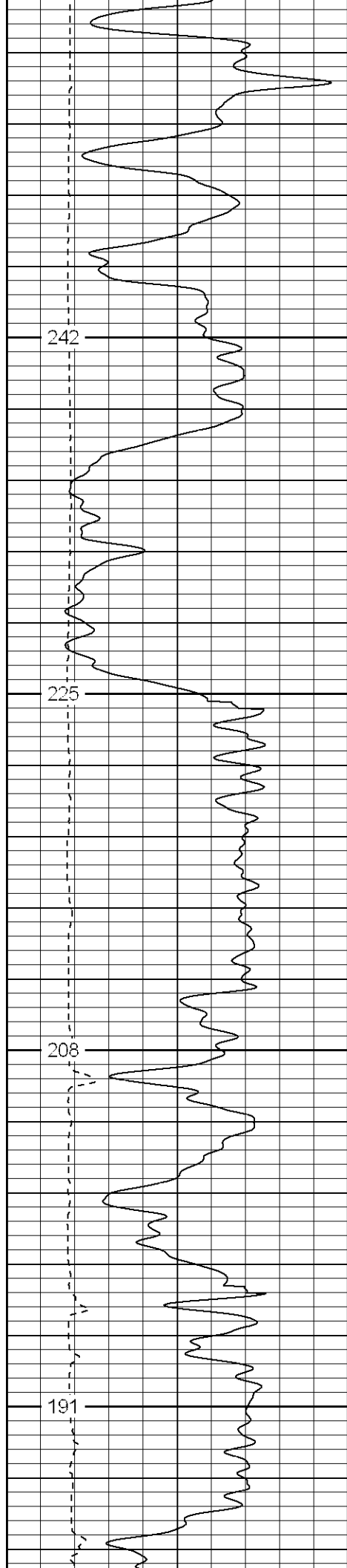
378

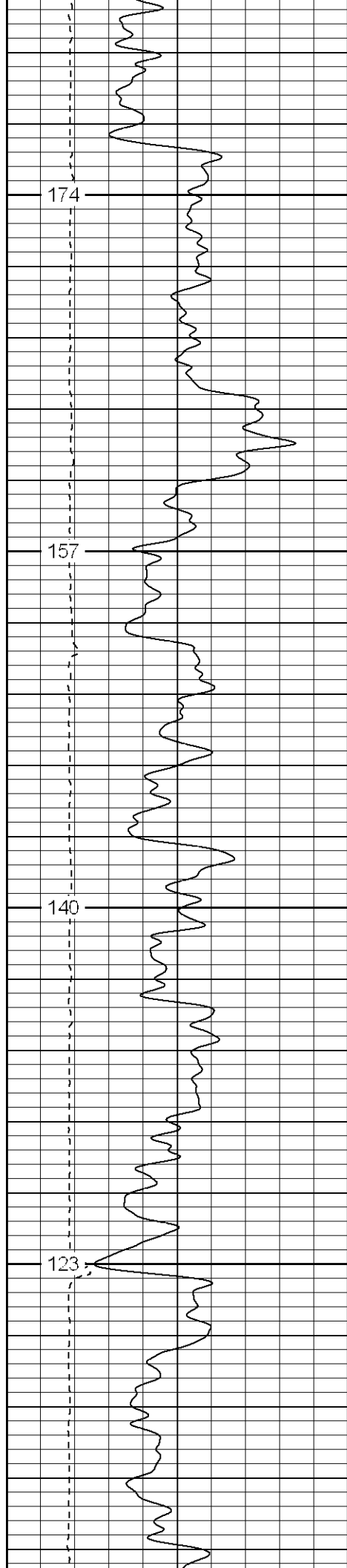
361

344









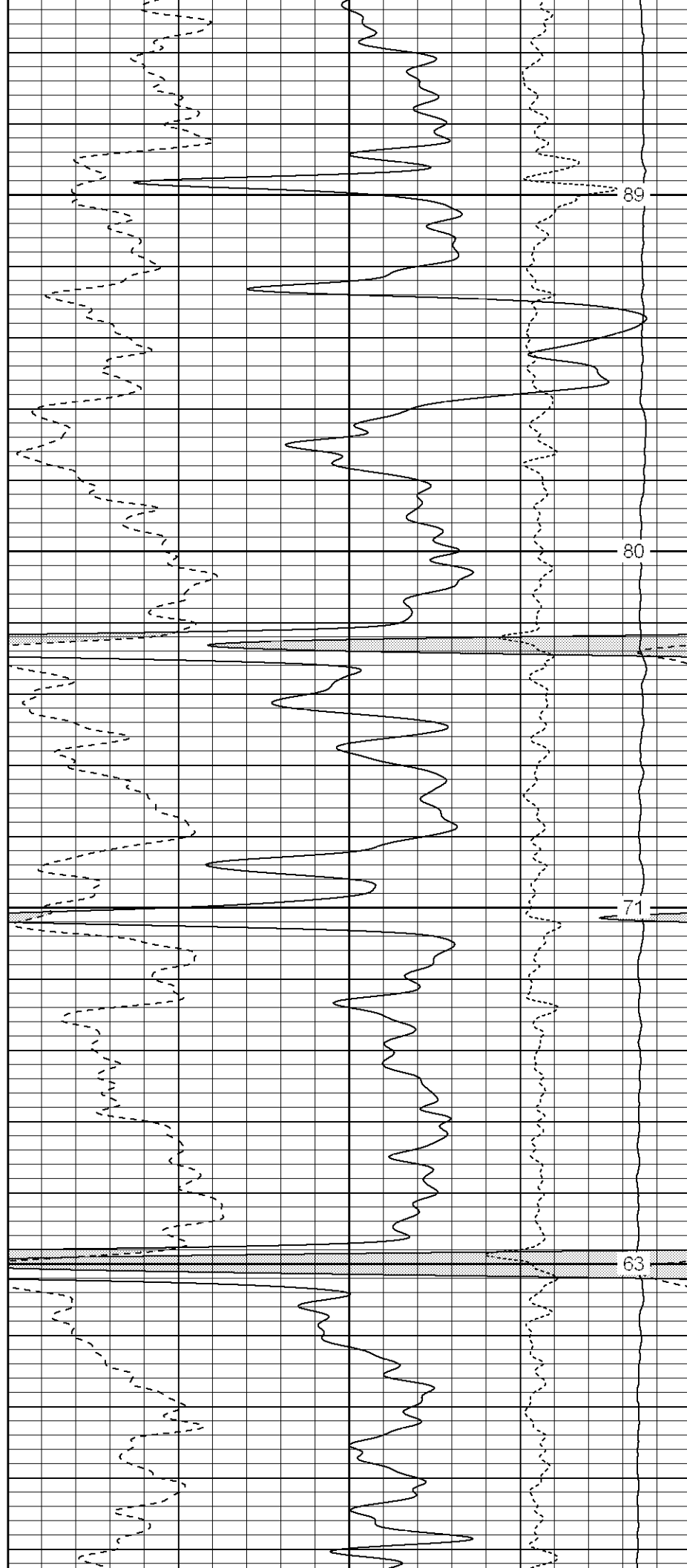
FOAM

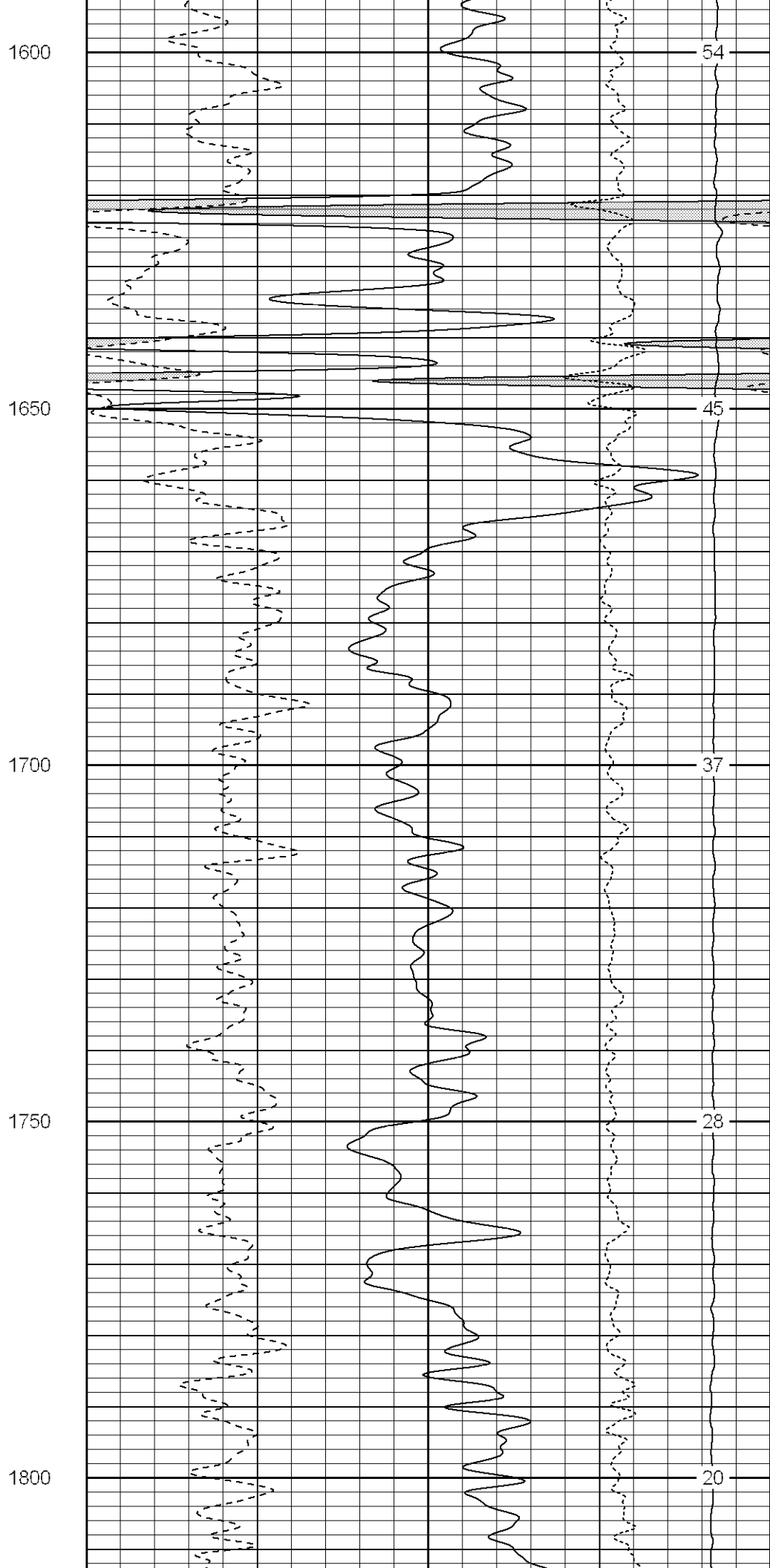
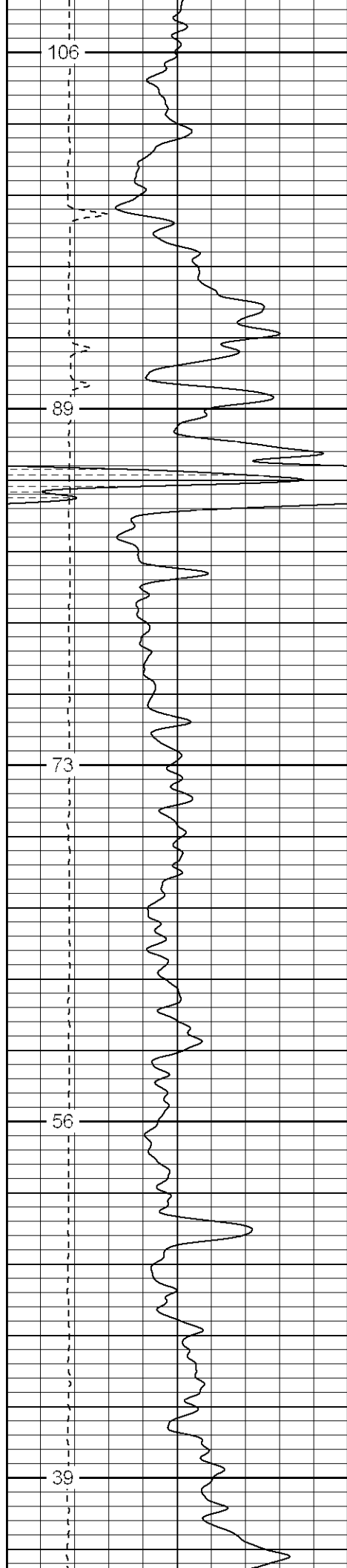
1400

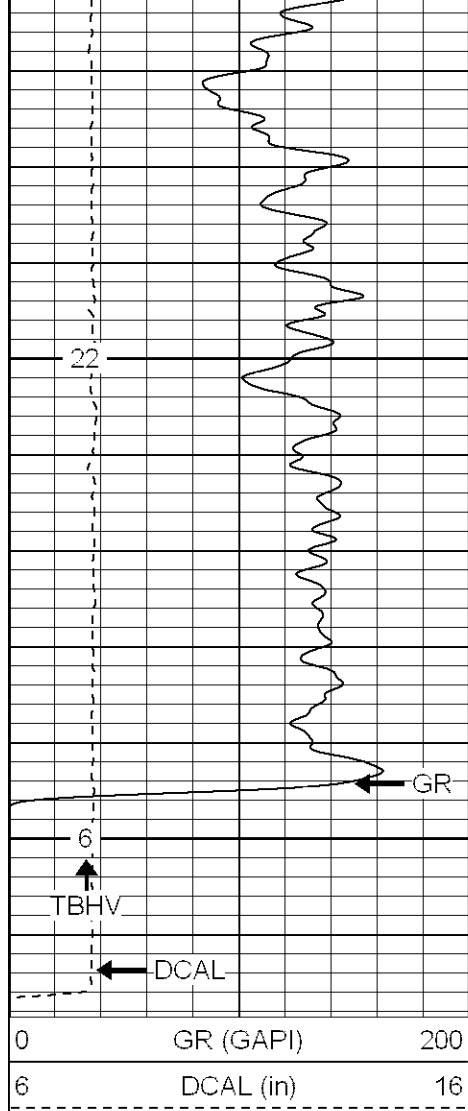
1450

1500

1550

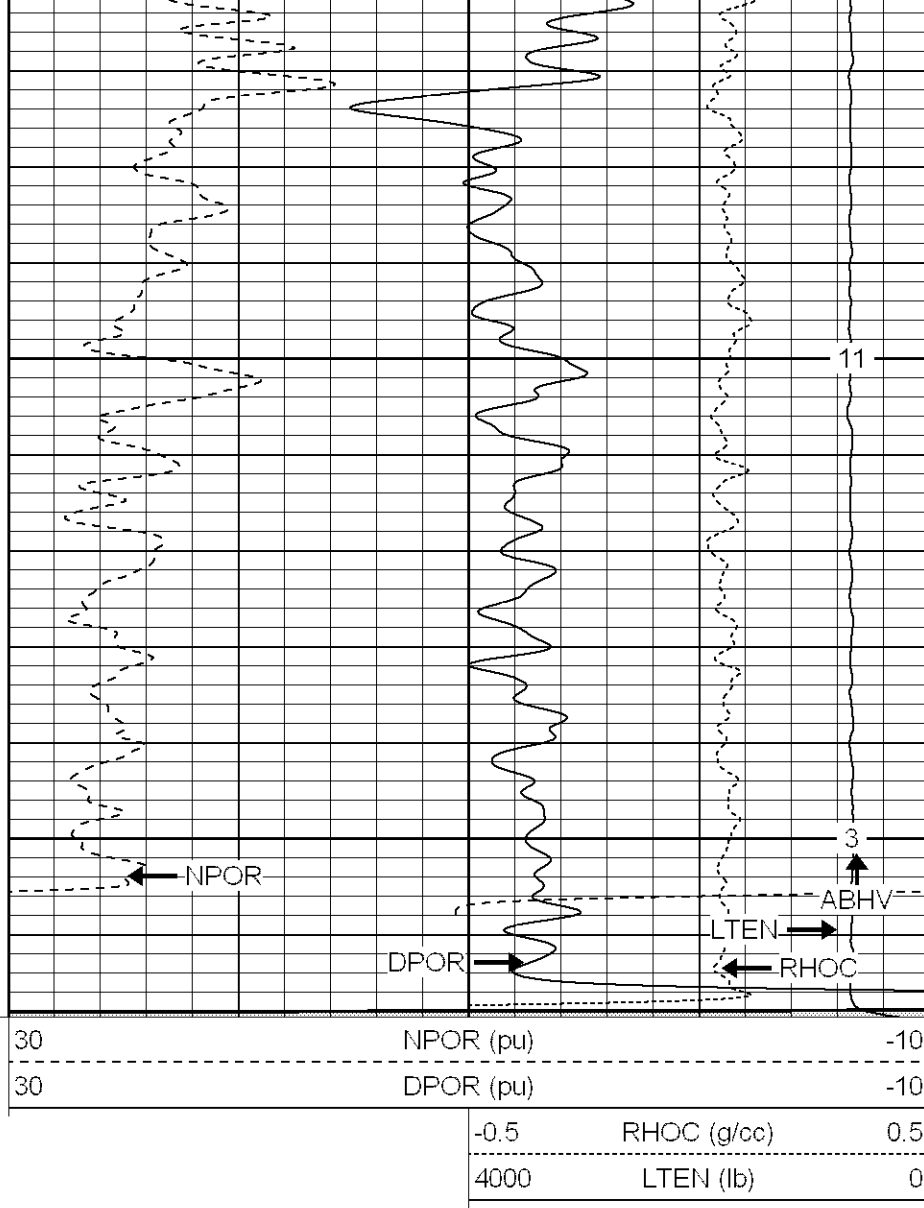






1850

1900



SUPERIOR

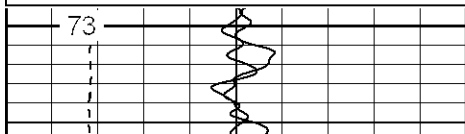
Black Lick, Pa.
Mercer, Pa.
Wooster, Oh.
Cleveland, Ok.
Trinidad, Co.

Repeat Section

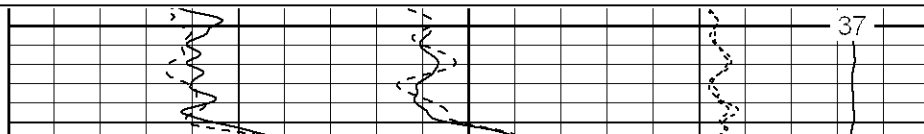
Database File: xtoge2911.db
Dataset Pathname: pass3.1
Presentation Format: cdnl
Dataset Creation: Wed Feb 14 06:39:59 2007 by Calc Open-Cased 061129
Charted by: Depth in Feet scaled 1:240

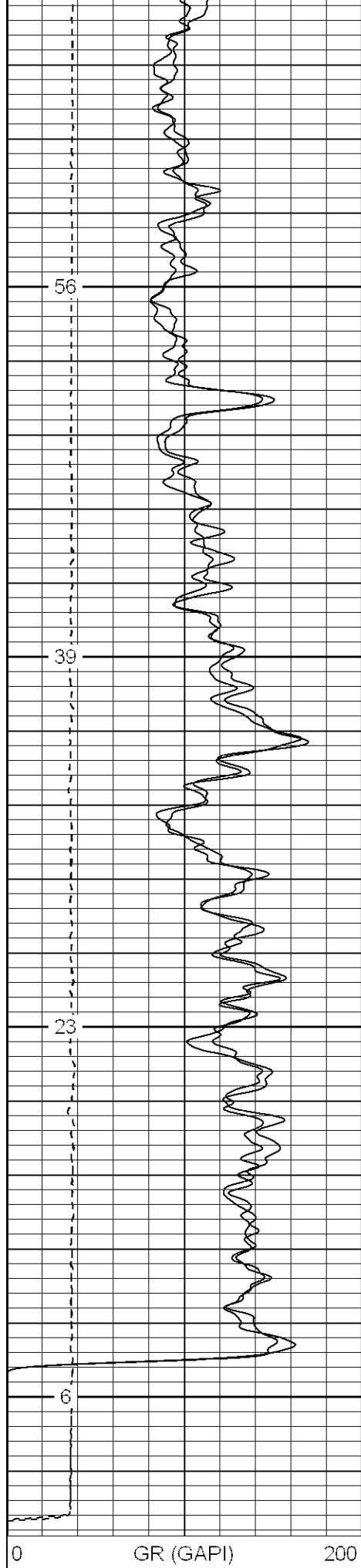
0	GR (GAPI)	200
6	DCAL (in)	16
0	GR-repeat (GAPI)	200
6	DCAL-repeat (in)	16

30	NPOR (pu)	-10
30	DPOR (pu)	-10
30	NPOR-repeat (pu)	-10
30	DPOR-repeat (pu)	-10
-0.5	RHOC (g/cc)	0.5
4000	LTEN (lb)	0
-0.5	RHOC-repeat (g/cc)	0.5

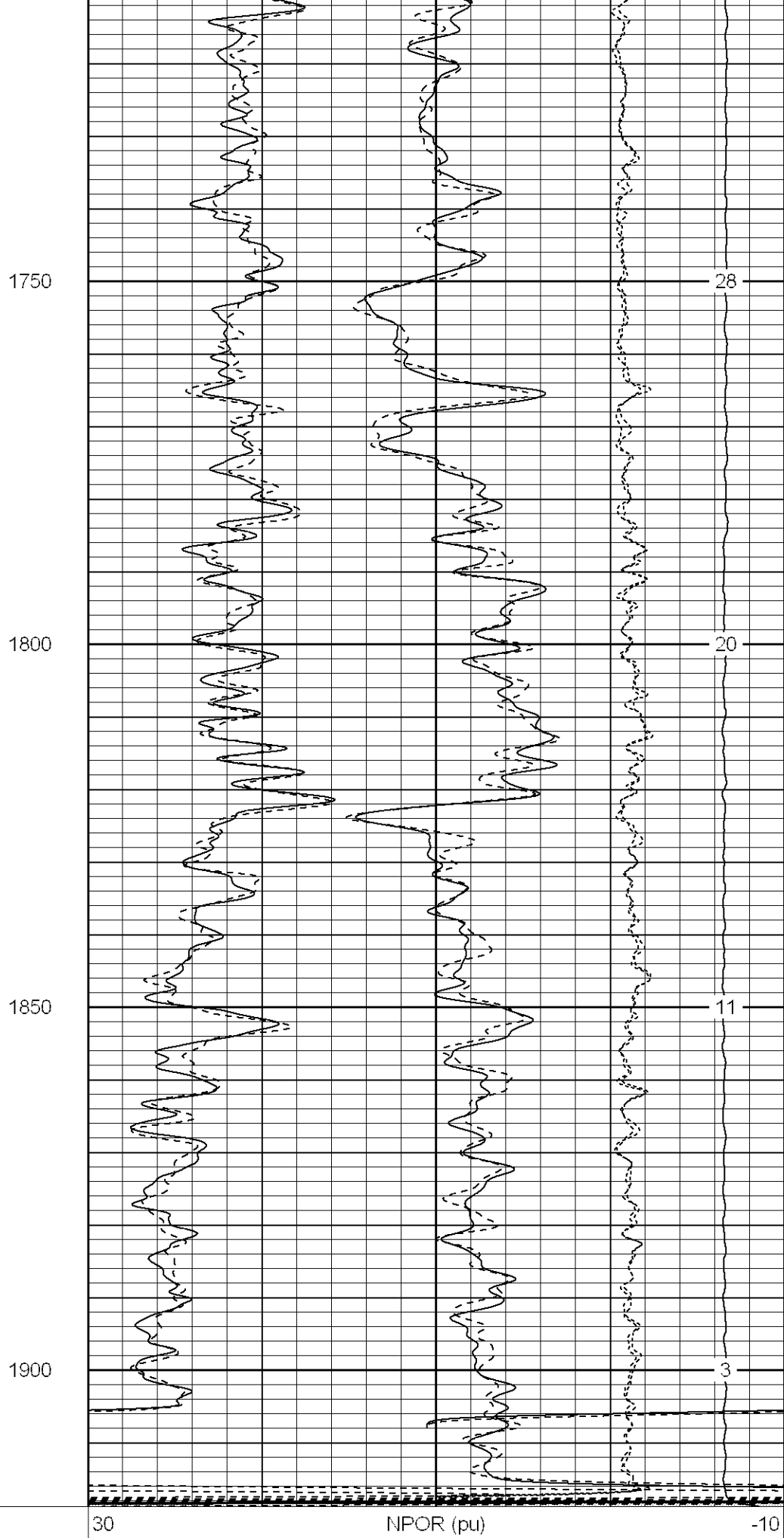


1700





0	GR (GAPI)	200
6	DCAL (in)	16
0	GR-repeat (GAPI)	200



30	NPOR (pu)	-10
30	DPOR (pu)	-10
30	NPOR-repeat (pu)	-10

6	GR-repeat (GAPI)	200
6	DCAL-repeat (in)	16

30	DPOR-repeat (pu)	-10
-0.5	RHOC (g/cc)	0.5
4000	LTEN (lb)	0
-0.5	RHOC-repeat (g/cc)	0.5



SUPERIOR

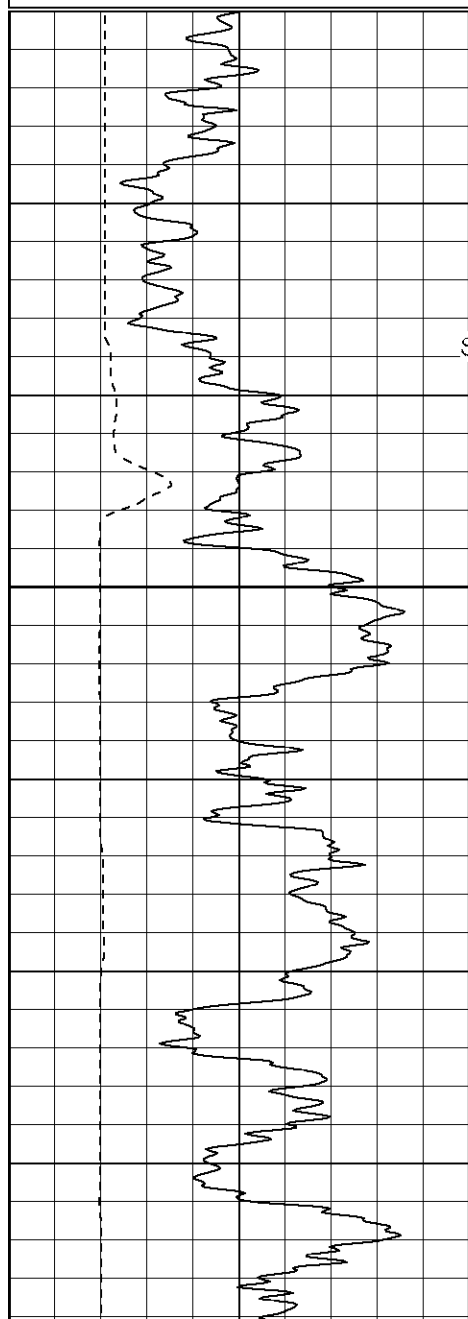
Black Lick, Pa.
Mercer, Pa.
Wooster, Oh.
Cleveland, Ok.
Trinidad, Co.

High Resolution Pass

Database File: xtoge2911.db
Dataset Pathname: pass4.2
Presentation Format: cdlhr
Dataset Creation: Wed Feb 14 13:14:01 2007 by Calc Open-Cased 061129
Charted by: Depth in Feet scaled 1:120

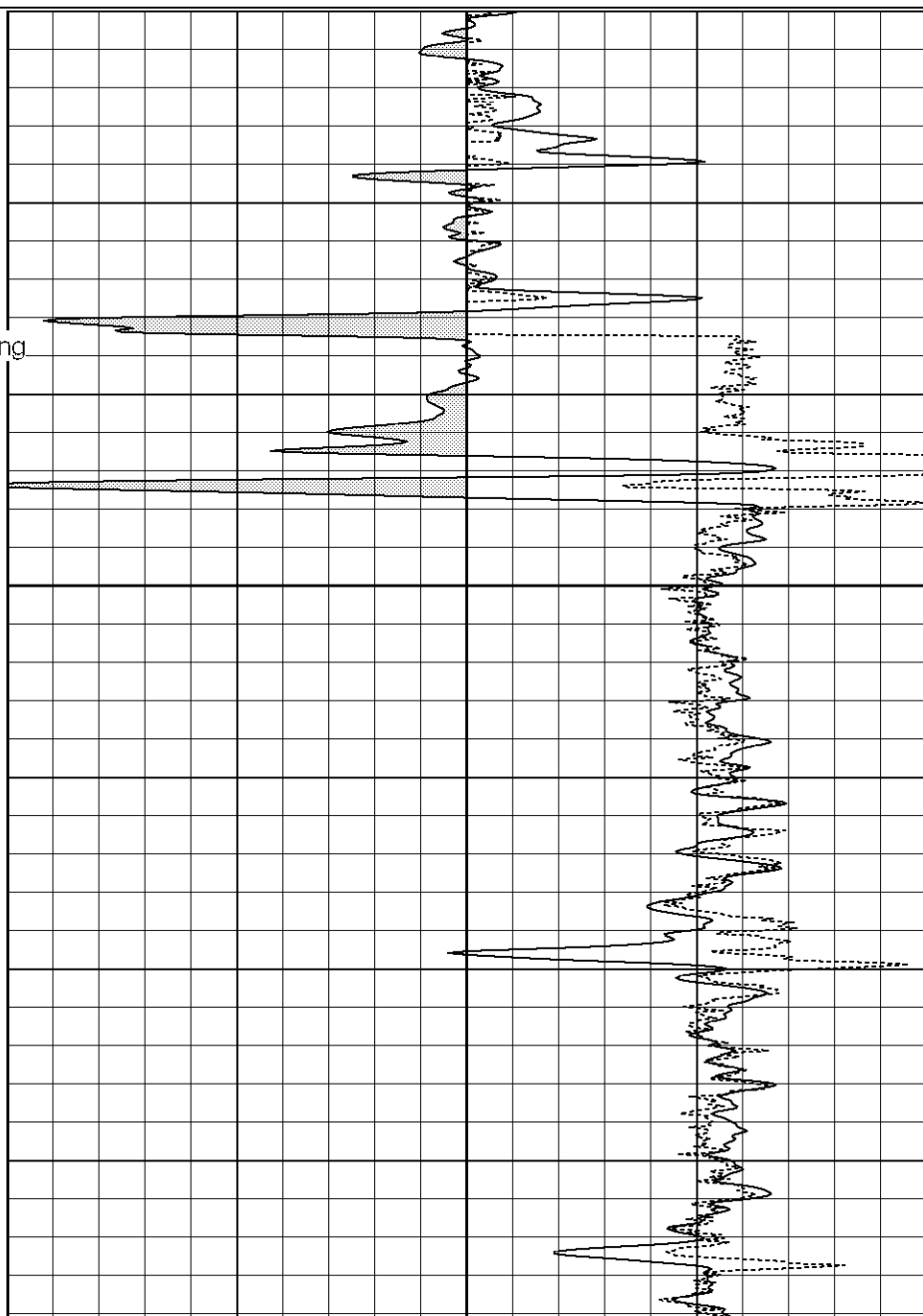
0	GR (GAPI)	200
6	DCAL (in)	16

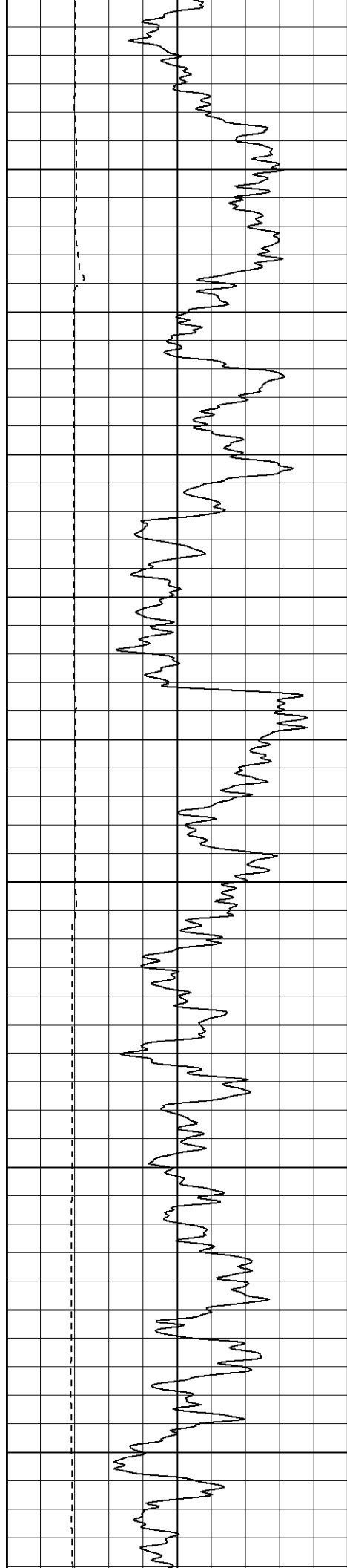
1	RHOB (g/cc)	3
-0.5	RHOC (g/cc)	0.5



Surface Casing

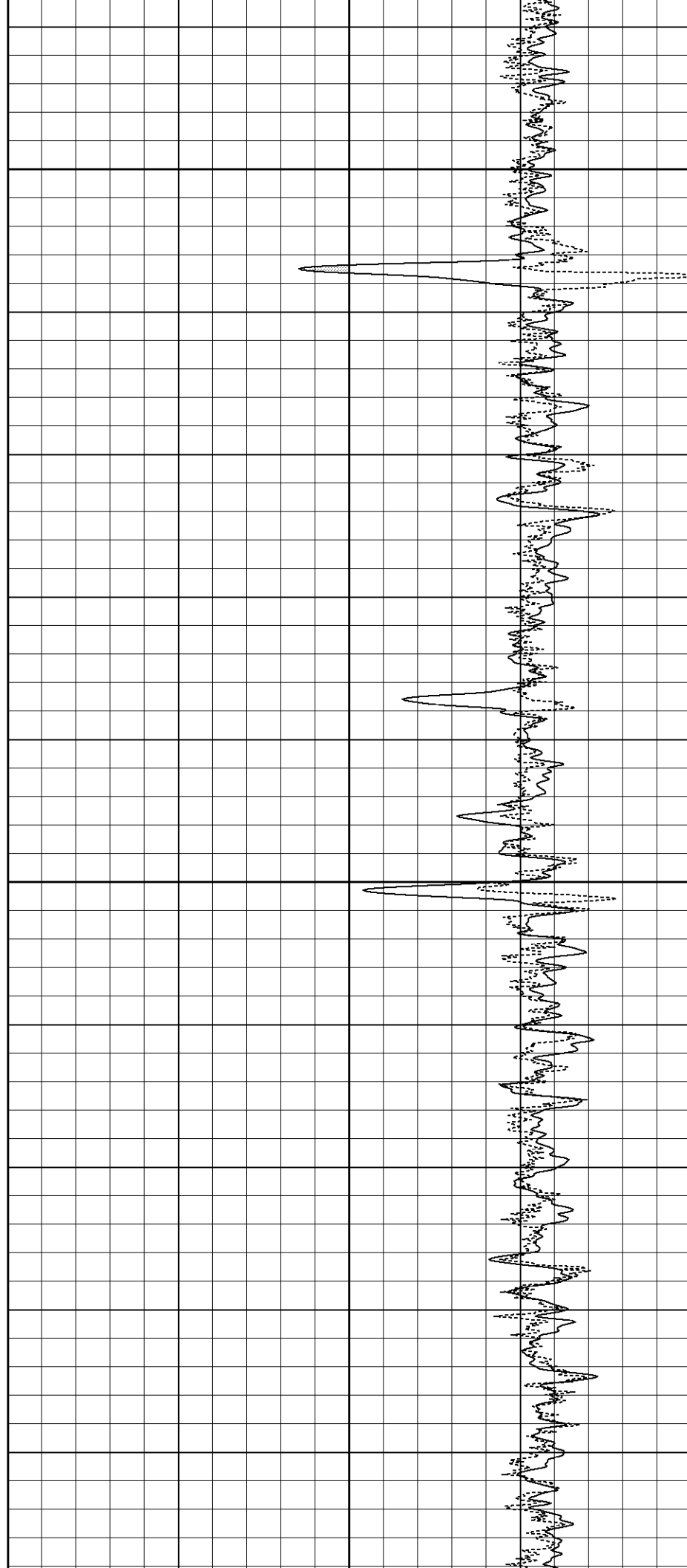
750

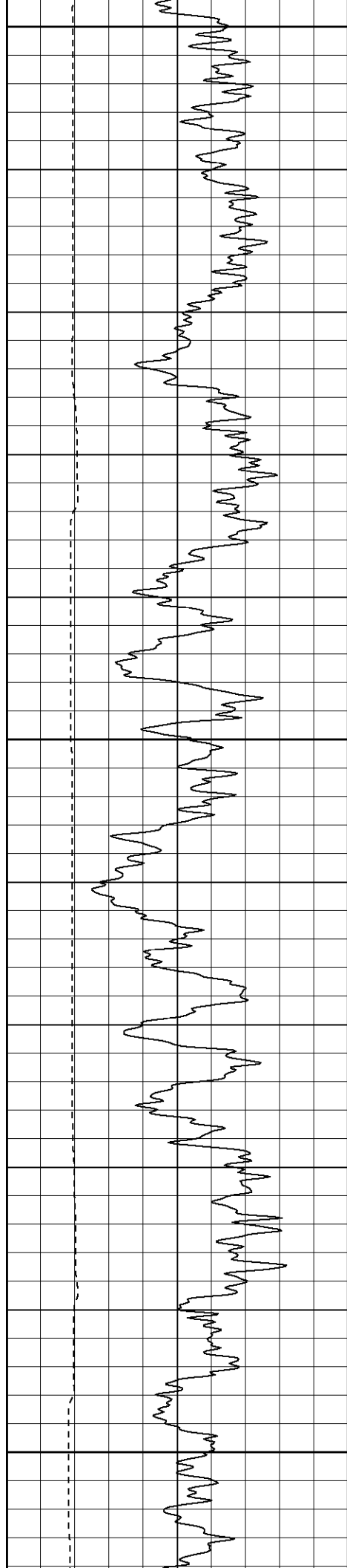




800

850

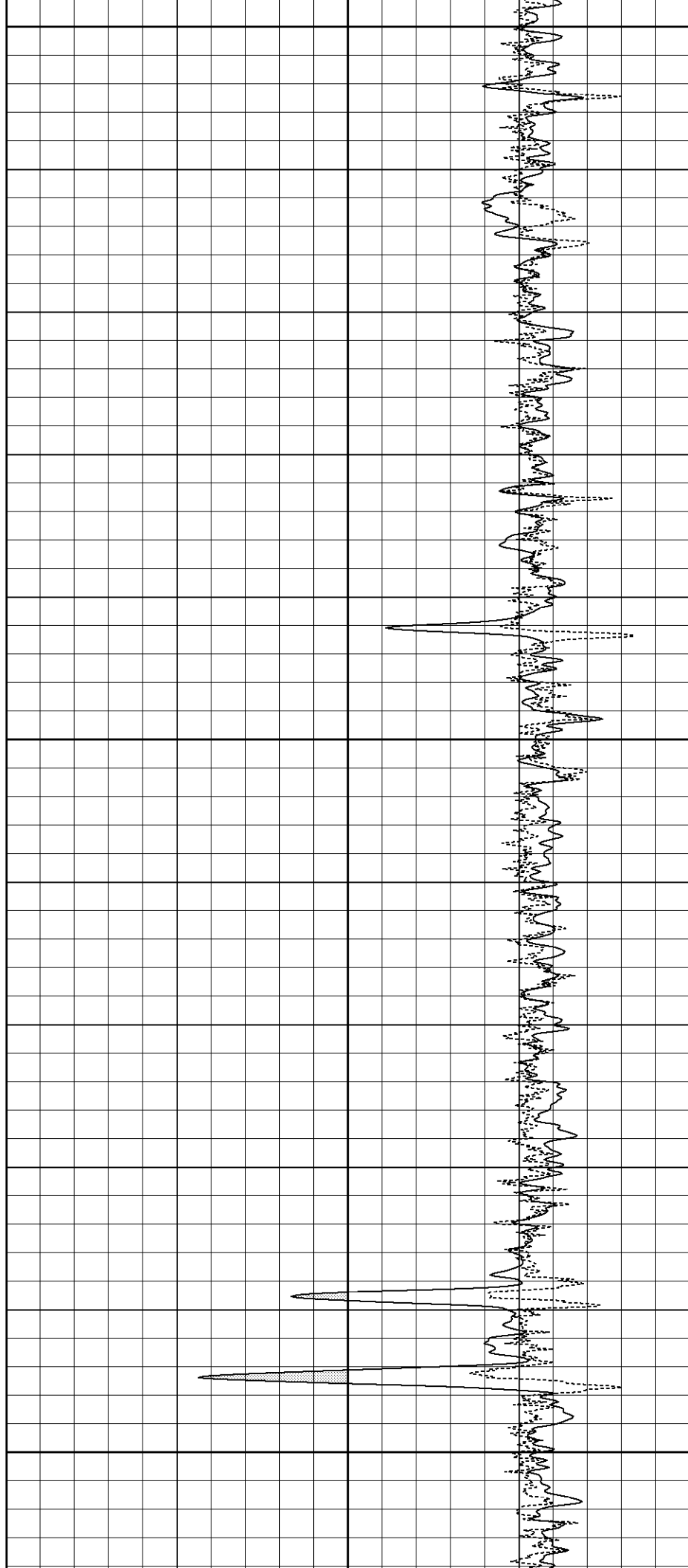


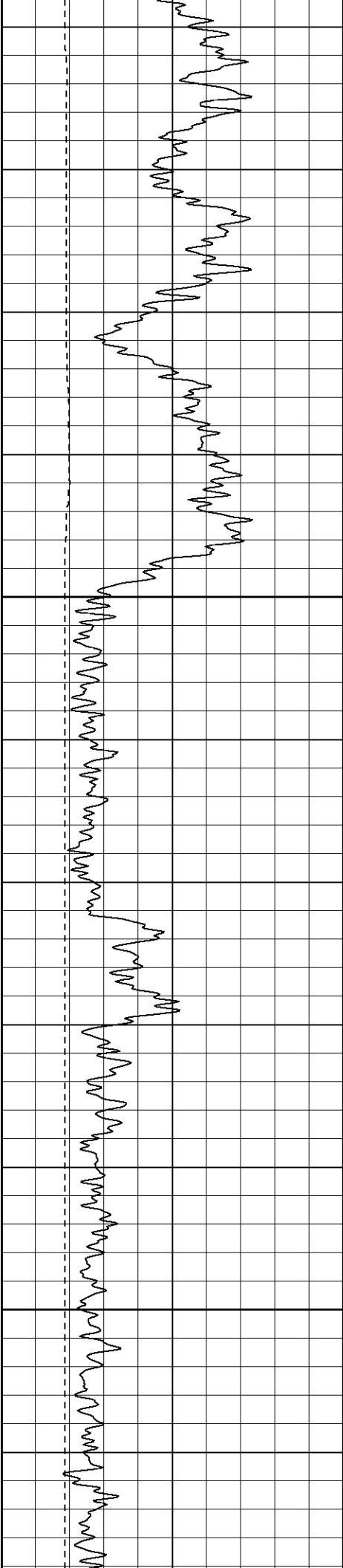


900

950

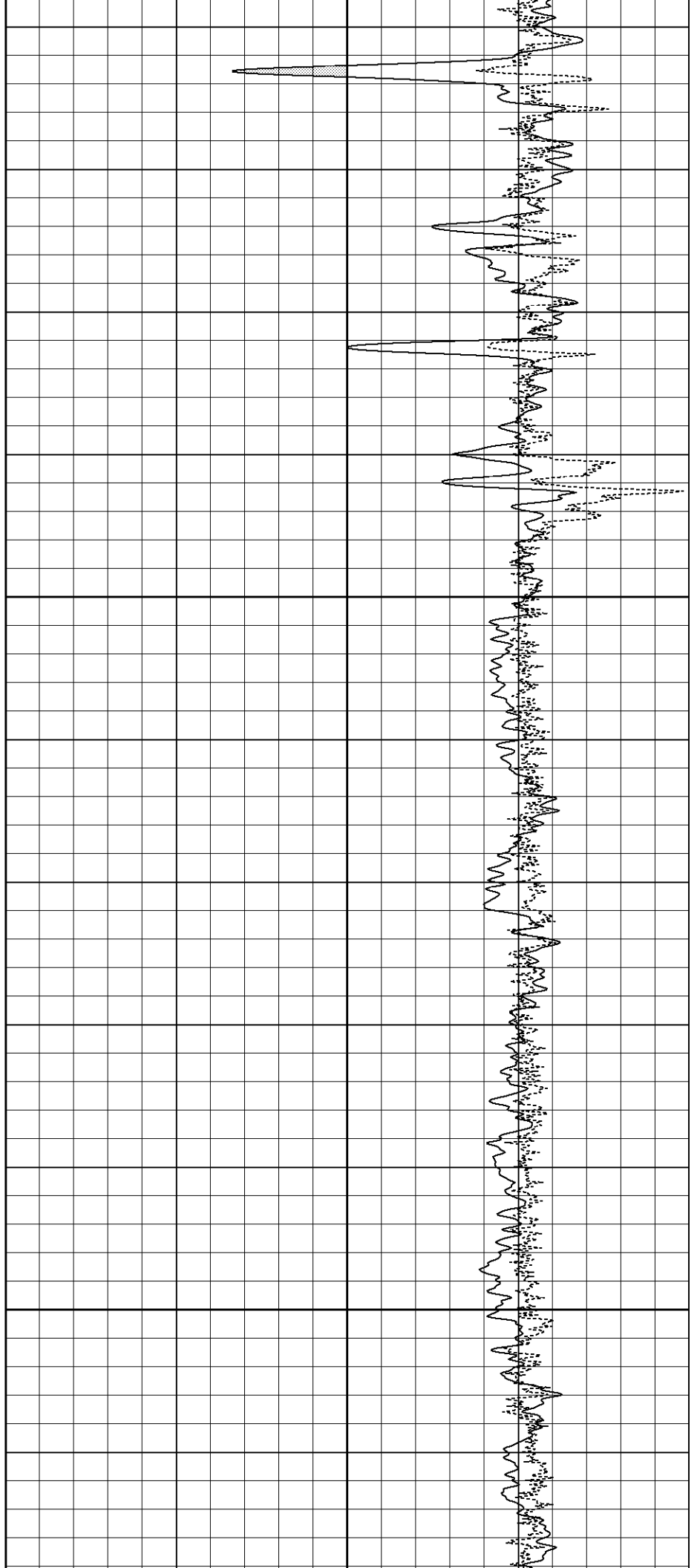
1000

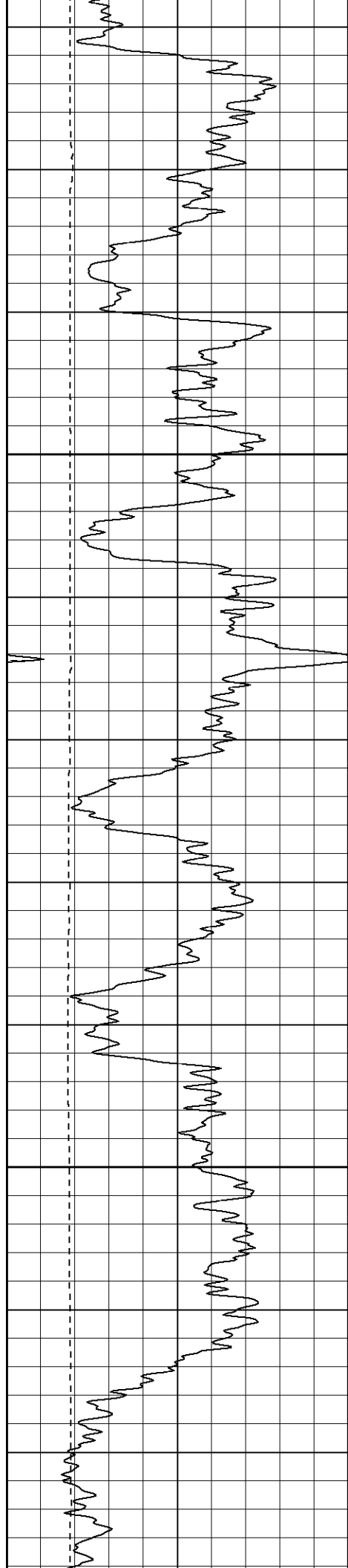




1050

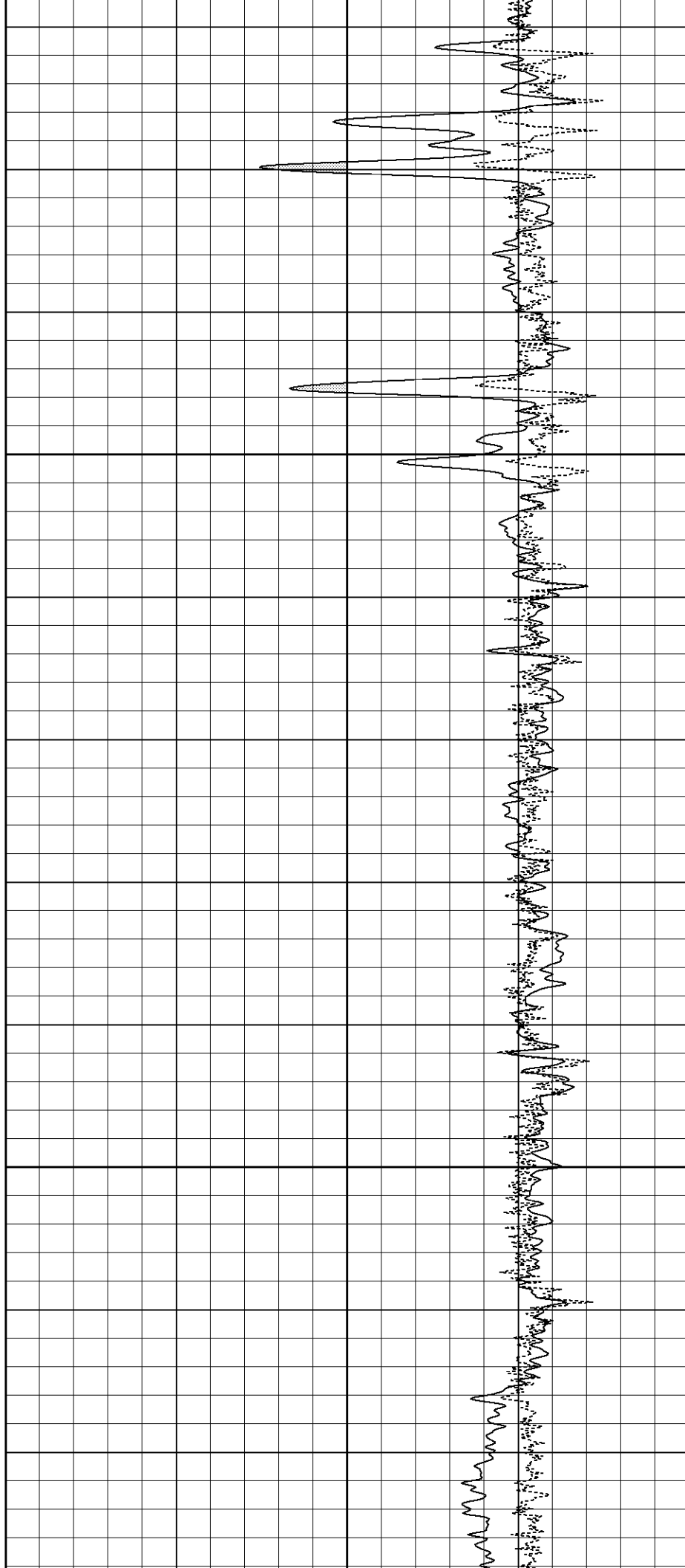
1100

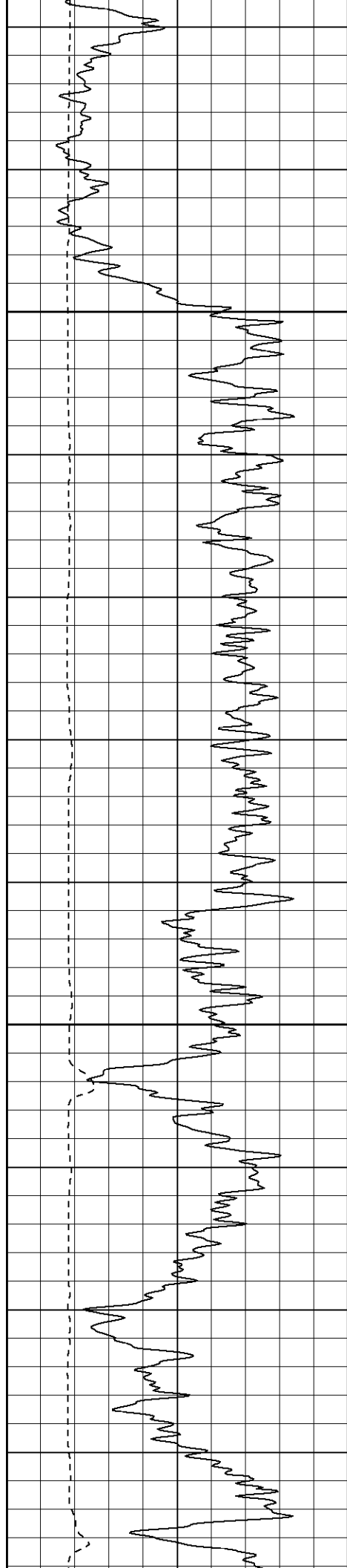




1150

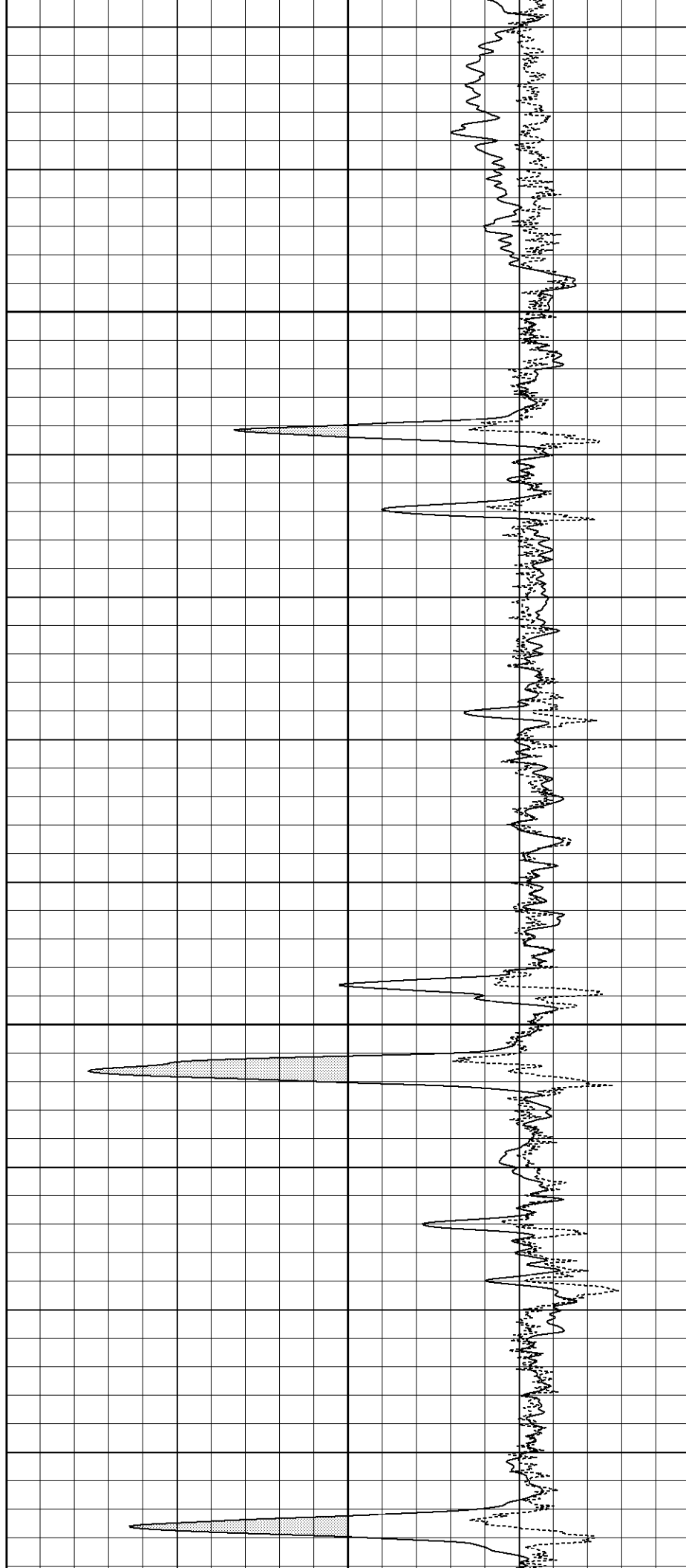
1200





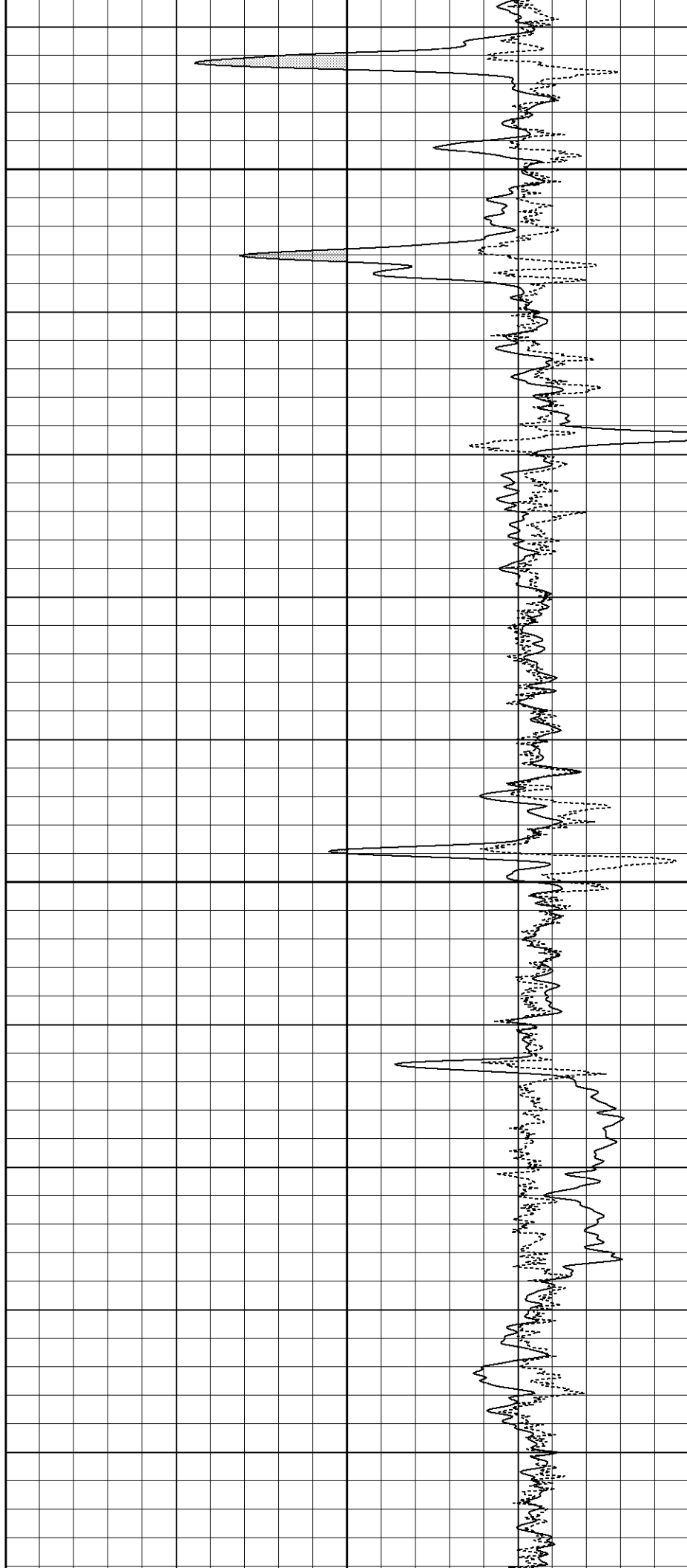
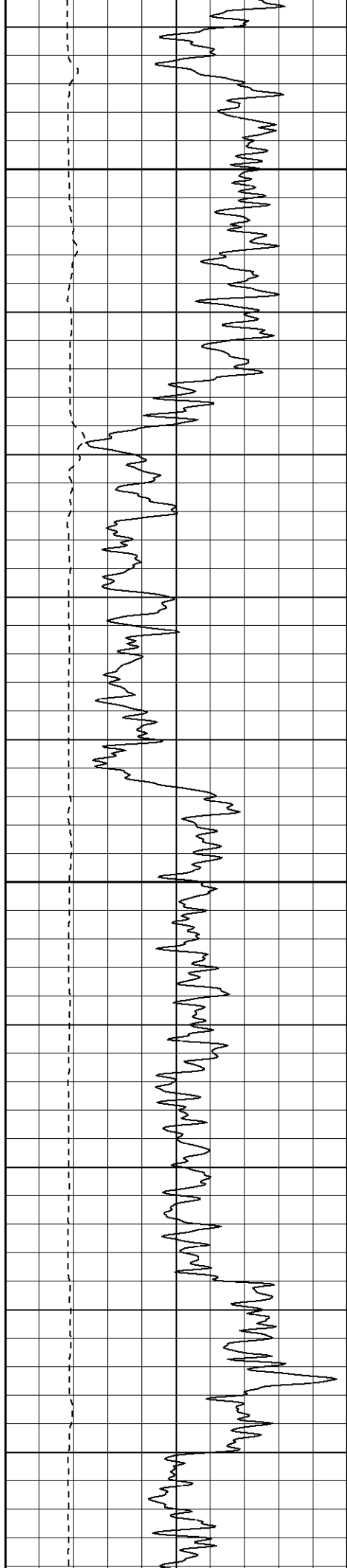
1250

1300



1350

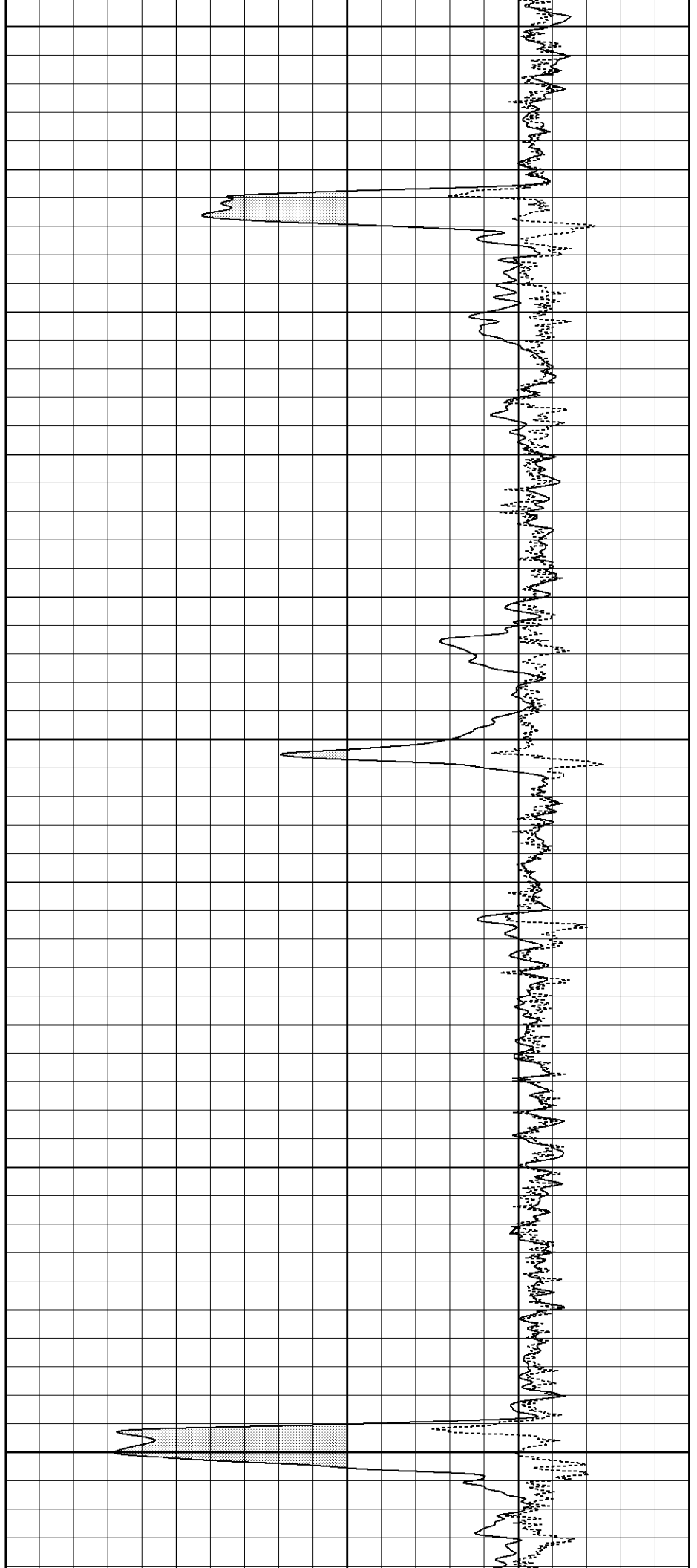
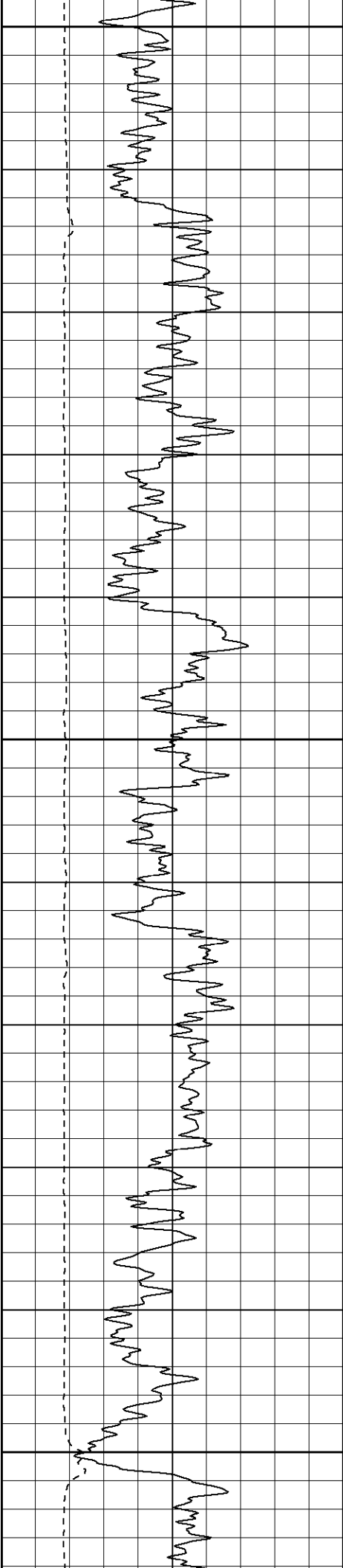
1400

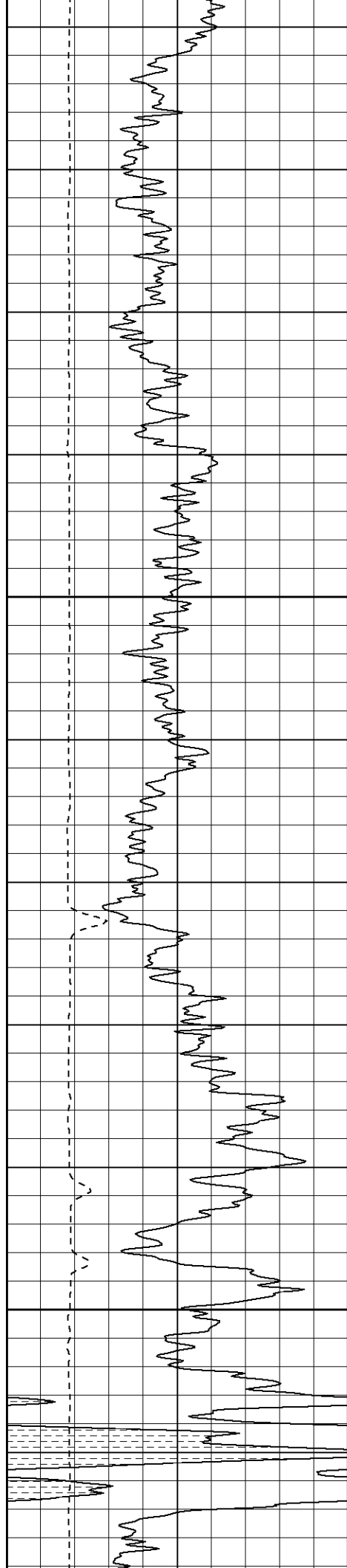


1450

1500

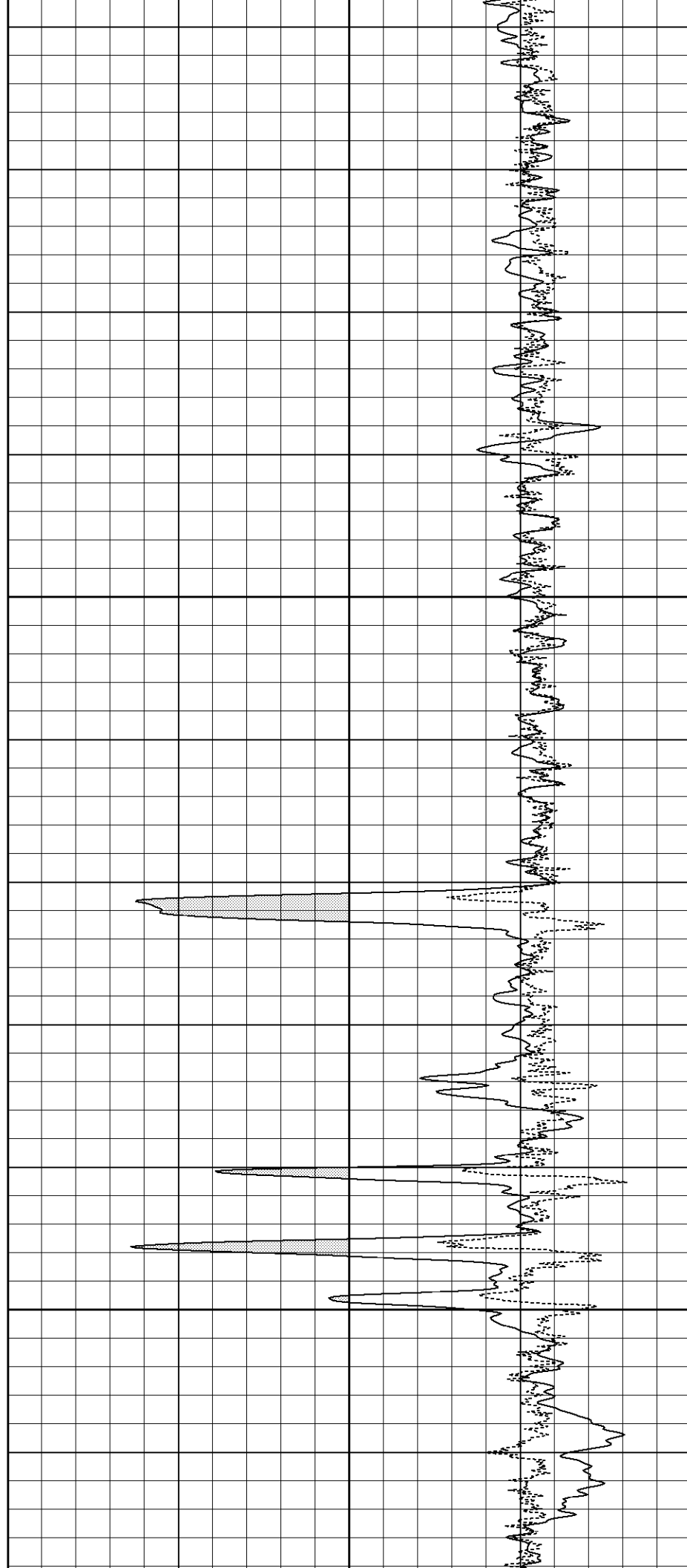
1550

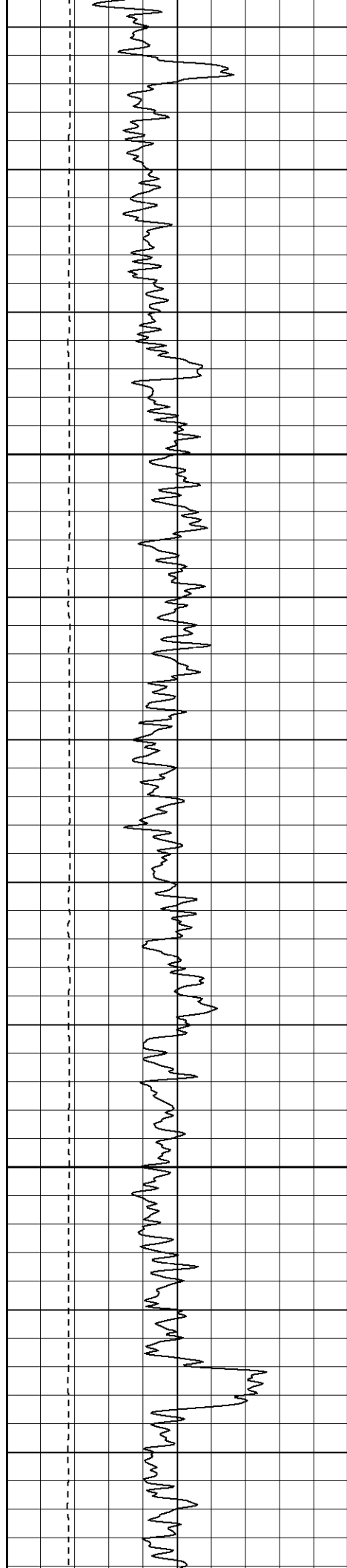




1600

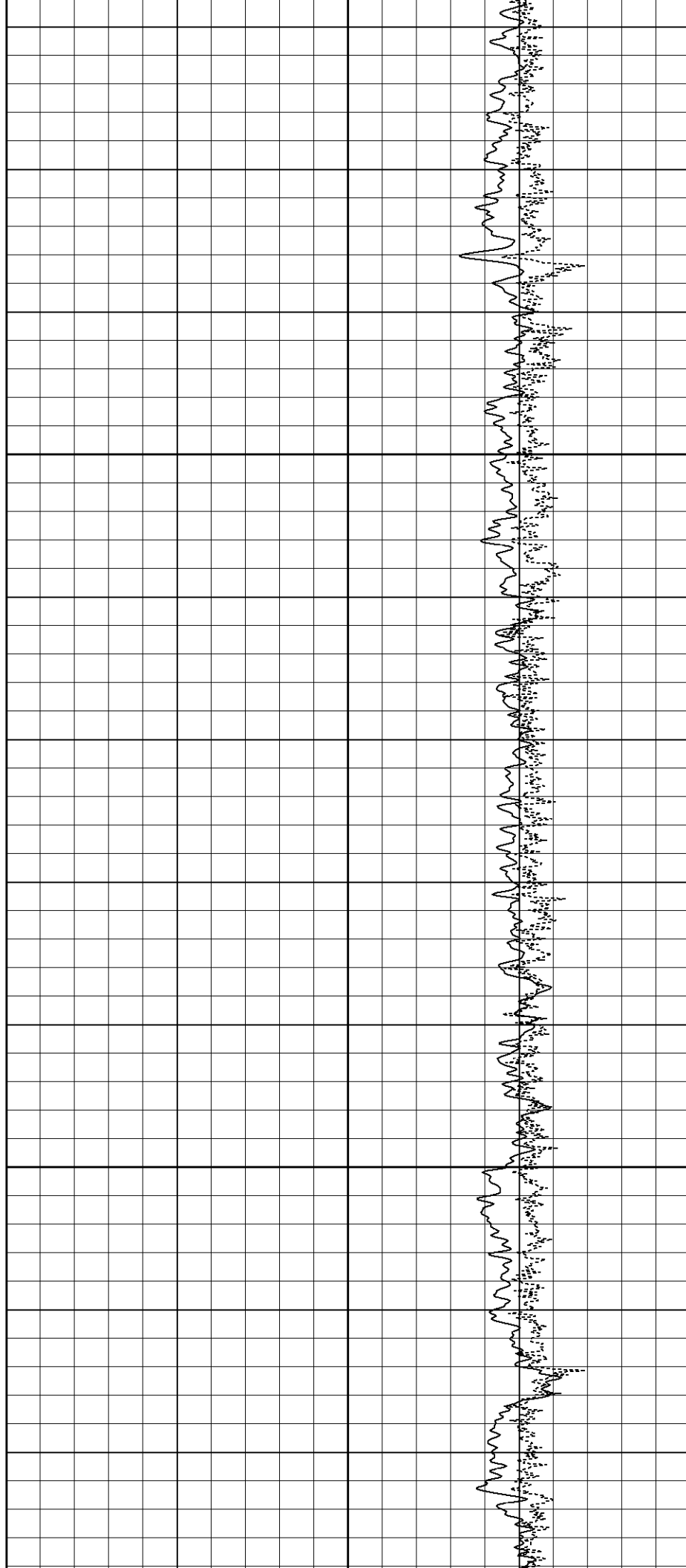
1650

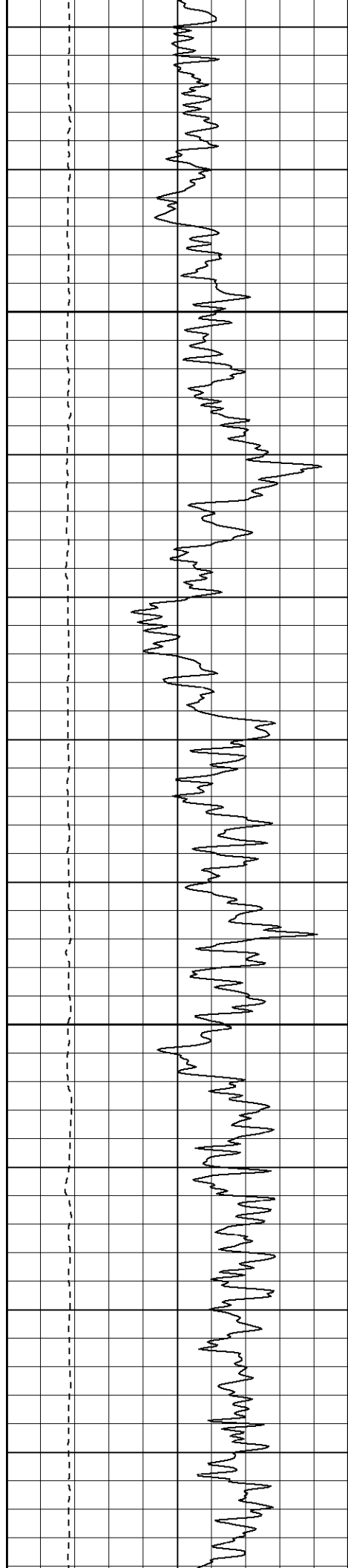




1700

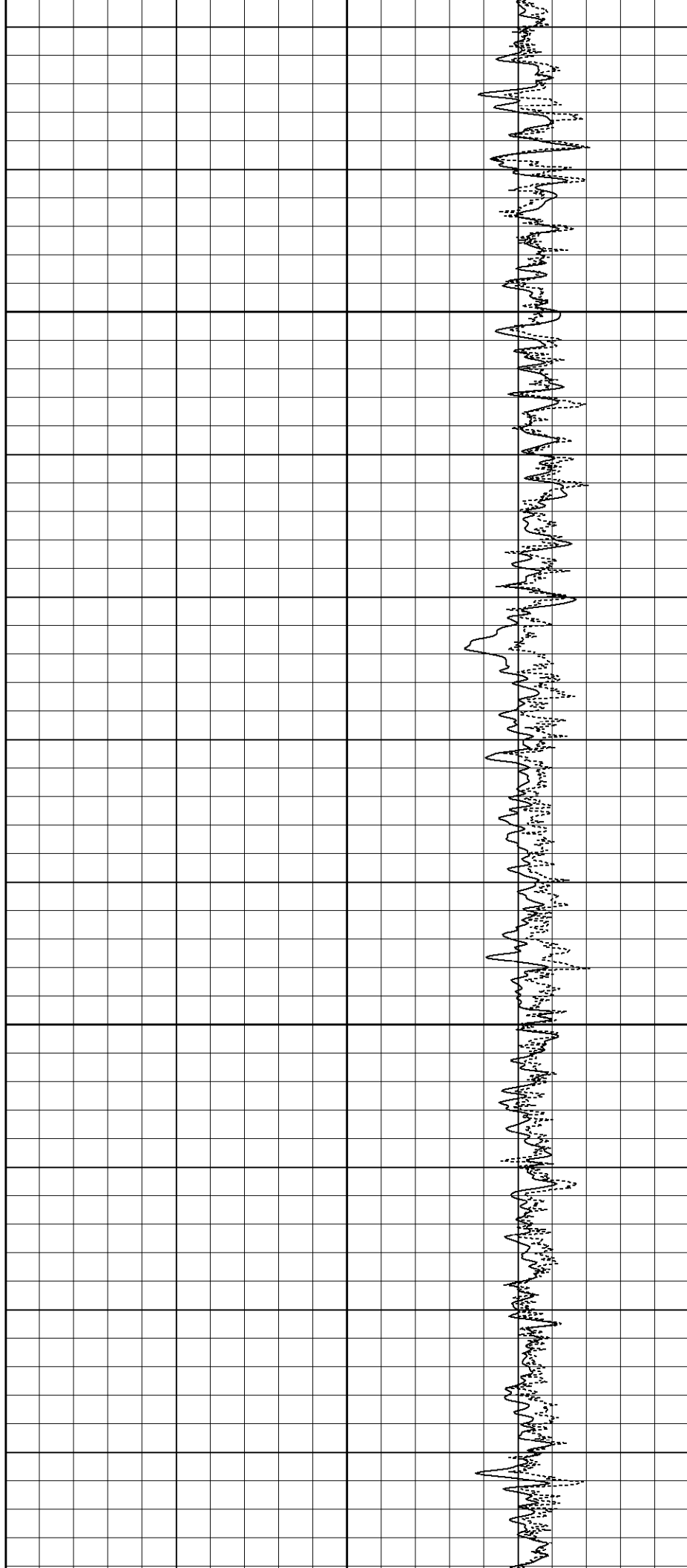
1750

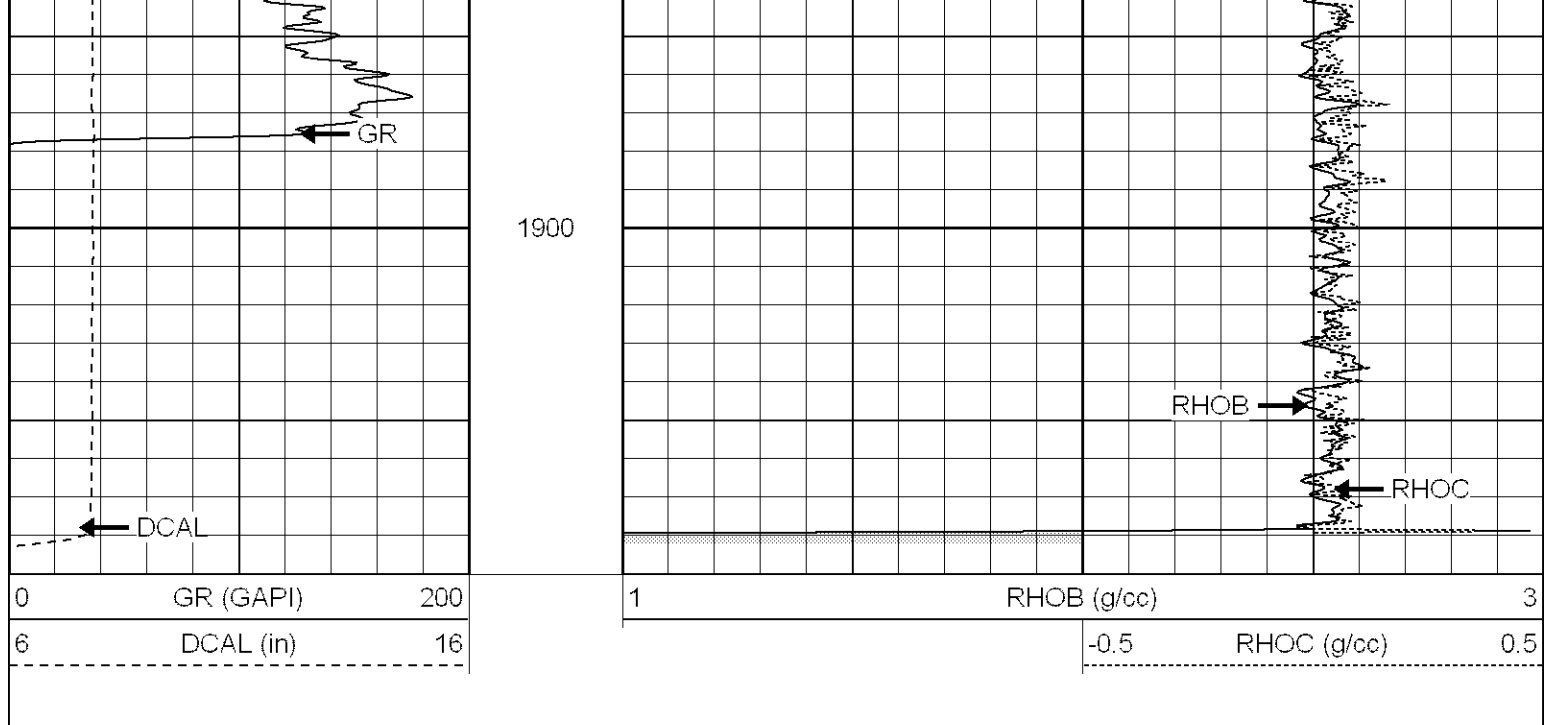




1800

1850





Calibration Report

Database File: xtoge2911.db
 Dataset Pathname: pass4
 Dataset Creation: Wed Feb 14 05:47:09 2007 by Log Open-Cased 061129

Compensated Density Calibration Report

Serial-Model: 2119-O
 Source / Verifier: csv-j12 / blks
 Master Calibration Performed: Tue Jan 09 13:59:23 2007

Master Calibration

	Density		Far Detector	Near Detector	
Magnesium	1.710	g/cc	986.57	607.78	cps
Aluminum	2.590	g/cc	221.07	405.01	cps

Spine Angle = 74.82

Density/Spine Ratio = 0.568

	Size		Reading	
Small Ring	7.85	in	2.95	V
Large Ring	14.00	in	8.81	V

Gamma Ray Calibration Report

Serial Number: 2119
 Tool Model: O
 Performed: Mon Jan 15 08:35:20 2007

Calibrator Value: 170.0 GAPI

Background Reading: 42.6 cps
 Calibrator Reading: 139.0 cps

Sensitivity: 1.0000 GAPI/cps

Neutron Calibration Report

Serial Number: 5145
 Tool Model: G

Thu Jan 25 22:38:45 2007

1200 NAPI

1700 cps

1 NAPI/cps

Sensor	Offset (ft)	Schematic	Description	Len (ft)	OD (in)	Wt (lb)
NEU	12.44		NEU-G (5145) Gearhart Epithermal	5.75	3.50	85.00
GR	7.64		GR-O (2119) Oilex	2.60	3.63	74.00
LSD	2.13		CDL-O (2119) Oilex	5.77	4.00	201.00
DCAL	1.79					
SSD	1.58					
Dataset: xtoge2911.db: field/well/run1/pass4 Total Length: 14.12 ft Total Weight: 360.00 lb O.D. 4.00 in						