



SUPERIOR
Black Lick, Pa.
Mercer, Pa.
Wooster, Oh.
Cleveland, Ok.
Trinidad, Co.

DUAL INDUCTION LOG

Company	XTO Energy Inc.		
Well	Golden Eagle 29-09-2		
Field	Purgatoire River		
County	Las Animas	State	Colorado
Location:	API # : 05 071 09362 00		Other Services CDL NEUTRON
SEC 29 TWP 33S RGE 67W		Elevation	
Permanent Datum	Ground Level	Elevation	7180'
Log Measured From	Ground Level		
Drilling Measured From	Ground Level	K.B. ----- D.F. ----- G.L. 7180'	
Date	1-23-08		
Run Number	One		
Depth Driller	1915'		
Depth Logger	1912'		
Bottom Logged Interval	1910'		
Top Log Interval	Surface Casing		
Casing Driller	8 5/8" @ 451'		
Casing Logger	451'		
Bit Size	7 7/8"		
Type Fluid in Hole	Water		
Density / Viscosity	///		
pH / Fluid Loss	///		
Source of Sample	///		
Rm @ Meas. Temp	///		
Rmf @ Meas. Temp	///		
Rmc @ Meas. Temp	///		
Source of Rmf / Rmc	///		
Rm @ BHT	///		
Time Circulation Stopped	9:00 A.M.		
Time Logger on Bottom	12:10 P.M.		
Maximum Recorded Temperature	106 DEG F		
Equipment Number	T697		
Location	Trinidad		
Recorded By	J. Cappellucci		
Witnessed By	Mr. Don Johnson		

<<< Fold Here >>>

All interpretations are opinions based on inferences from electrical or other measurements and we cannot and do not guarantee the accuracy or correctness of any interpretation, and we shall not, except in the case of gross or willful negligence on our part, be liable or responsible for any loss, costs, damages, or expenses incurred or sustained by anyone resulting from any interpretation made by any of our officers, agents or employees. These interpretations are also subject to our general terms and conditions set out in our current Price Schedule.

Comments

Well Directions:
Hwy 12 , second entrance to Bosque, First Left
follow road uphill, first left to location.



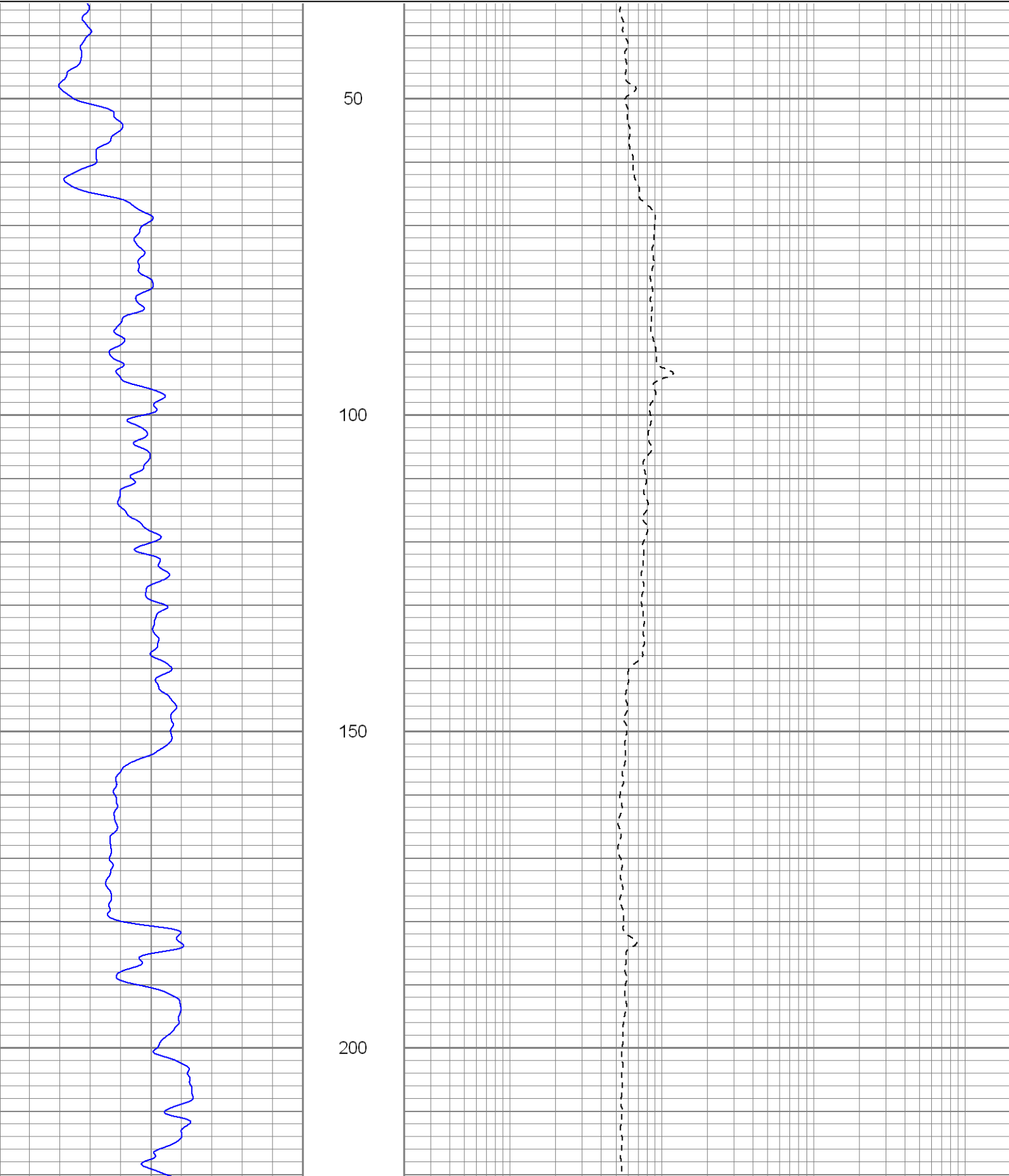
SUPERIOR
Black Lick, Pa.
Mercer, Pa.
Wooster, Oh.
Cleveland, Ok.
Trinidad, Co.

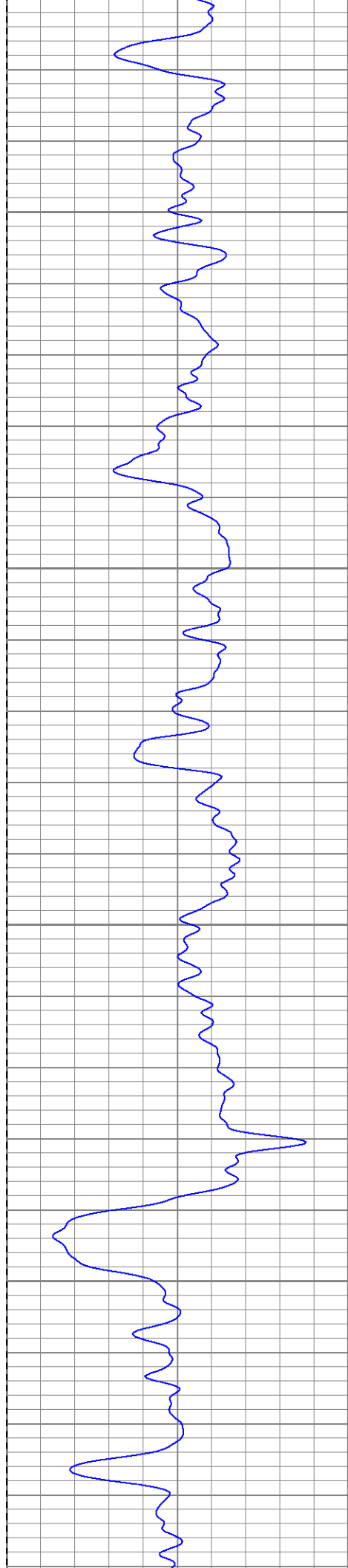
Main Pass

Database File: xtoge29-09-2.db
Dataset Pathname: pass3.1
Presentation Format: dil
Dataset Creation: Wed Jan 23 14:08:14 2008 by Calc Open-Cased 070814
Charted by: Depth in Feet scaled 1:240

0	GR (GAPI)	200
-200	SP (mV)	0

0.2	RILM (Ohm-m)	2000
0.2	RILD (Ohm-m)	2000
0.2	RLL3 (Ohm-m)	2000



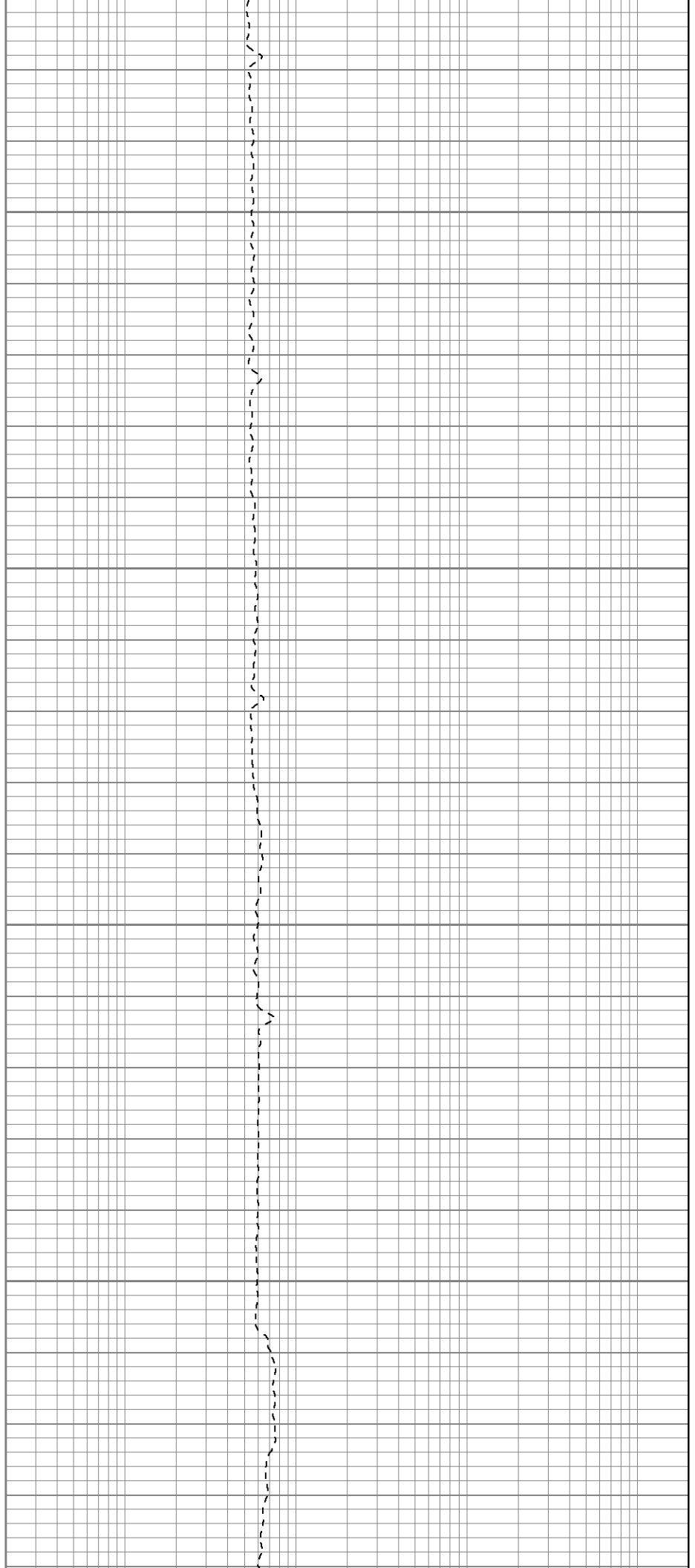


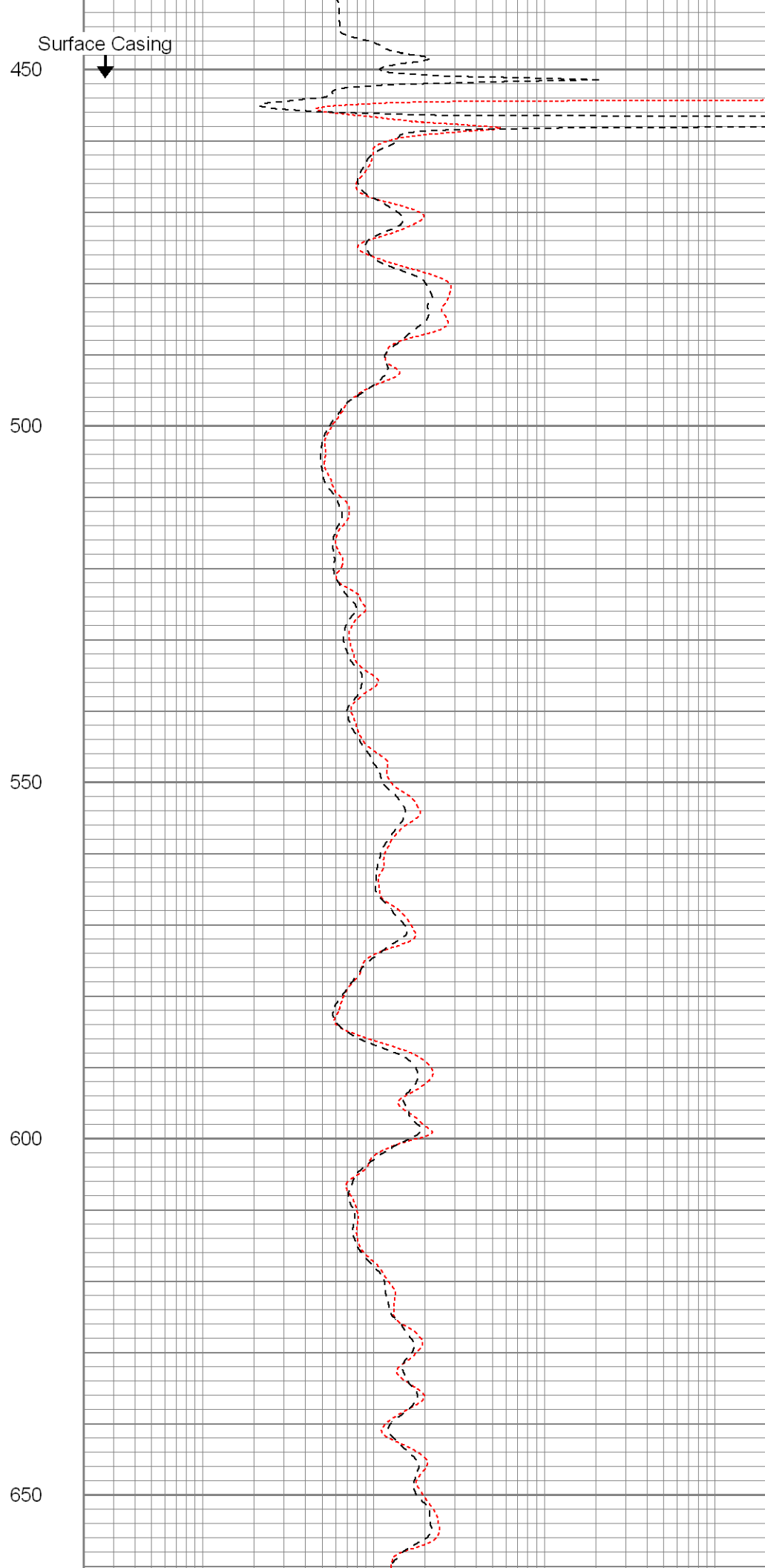
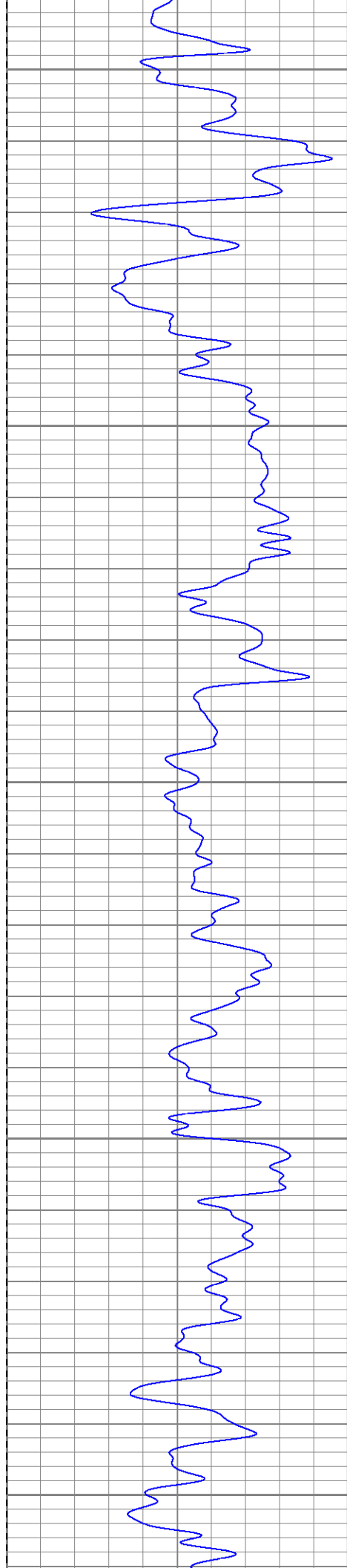
250

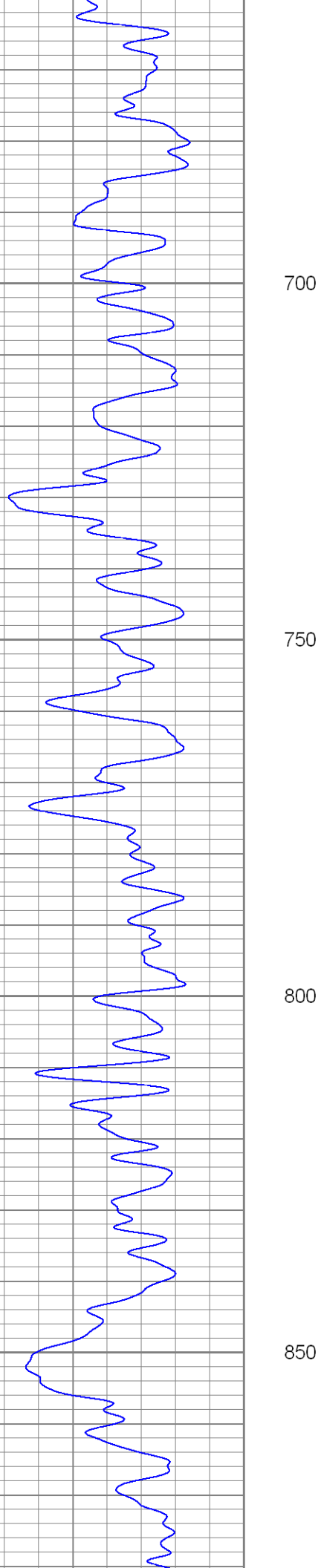
300

350

400





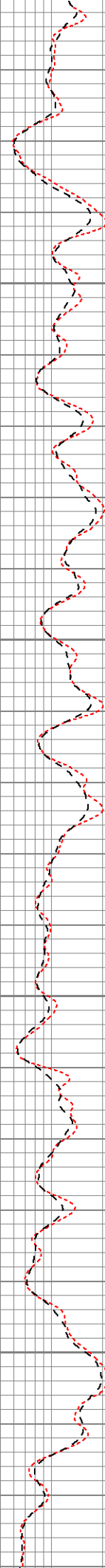


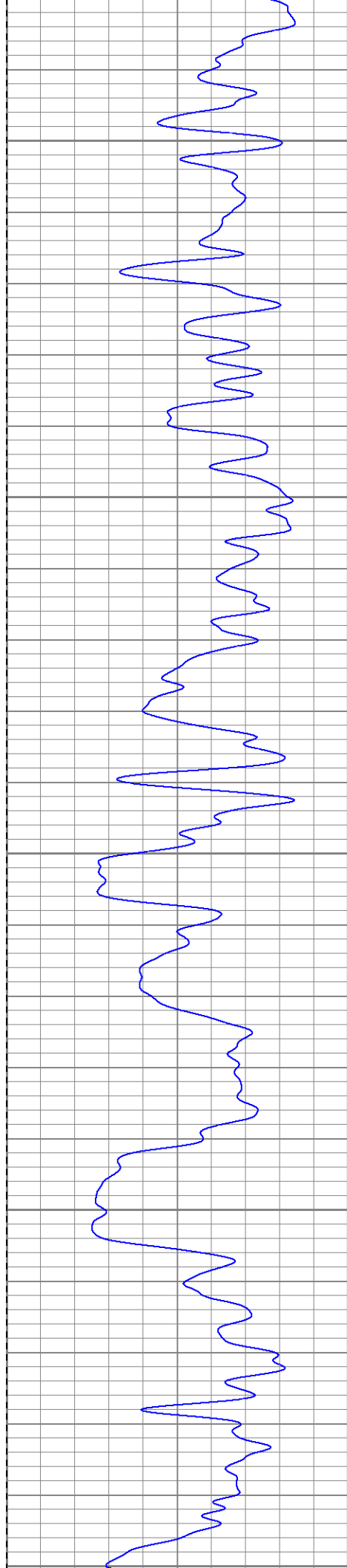
700

750

800

850





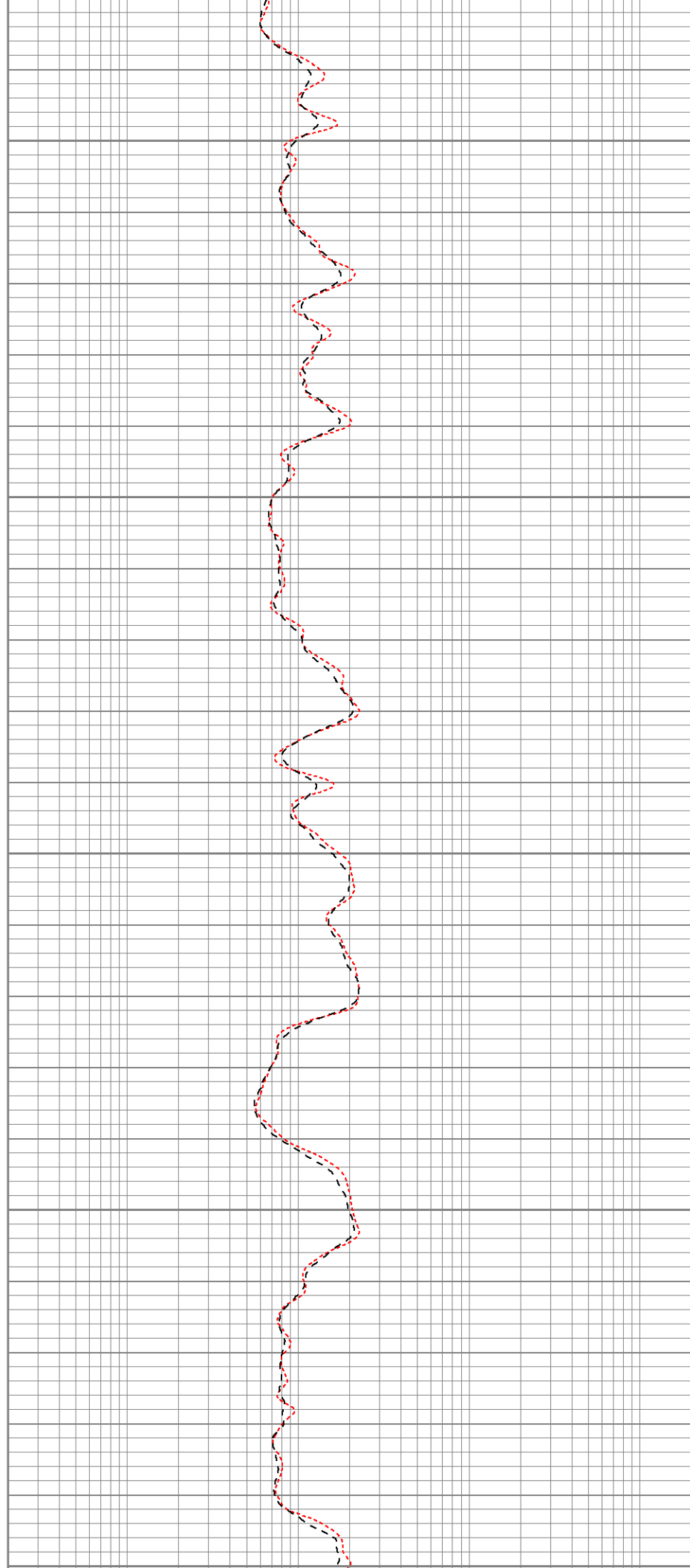
900

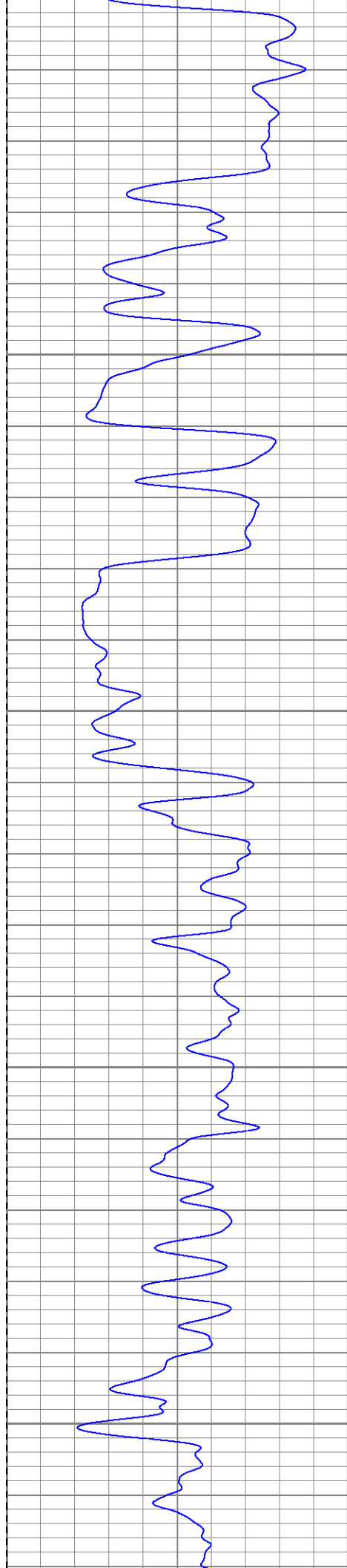
950

1000

1050

1100





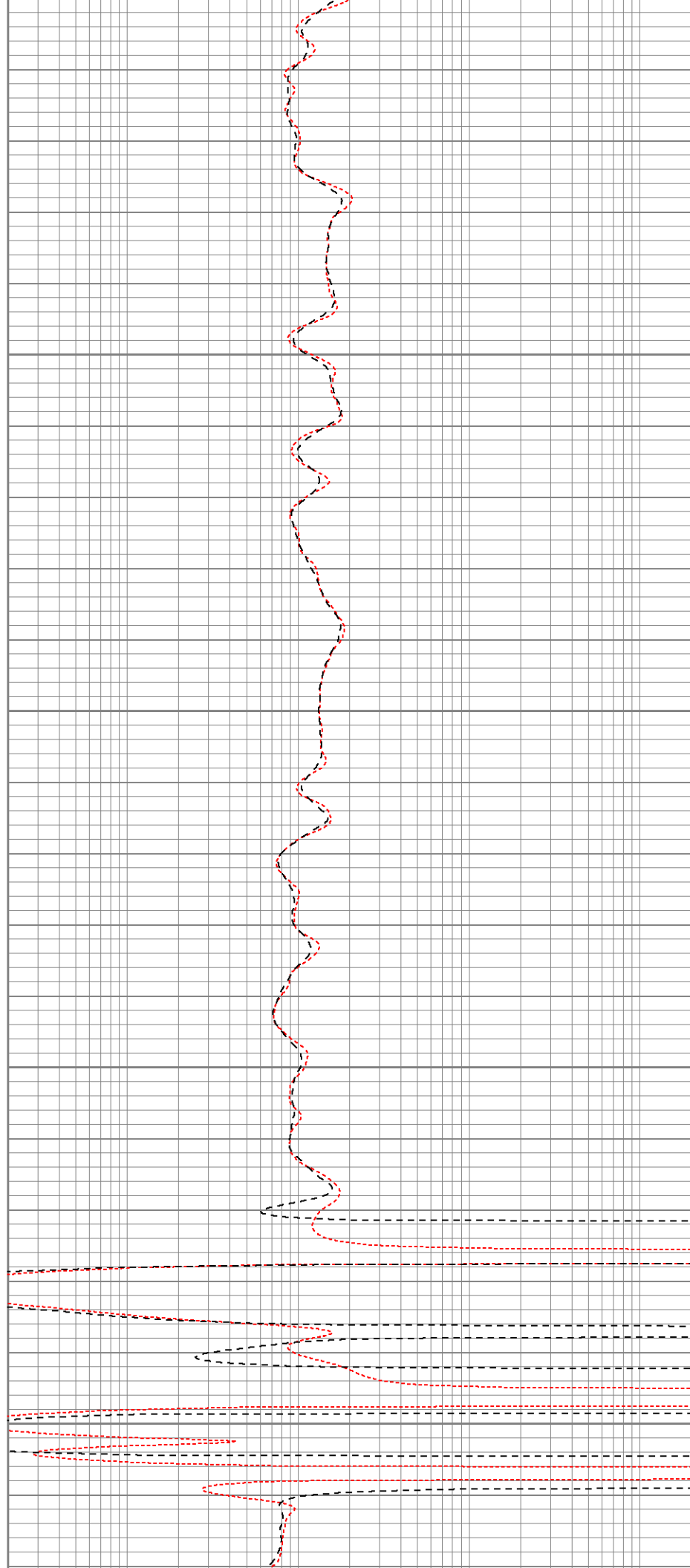
1100

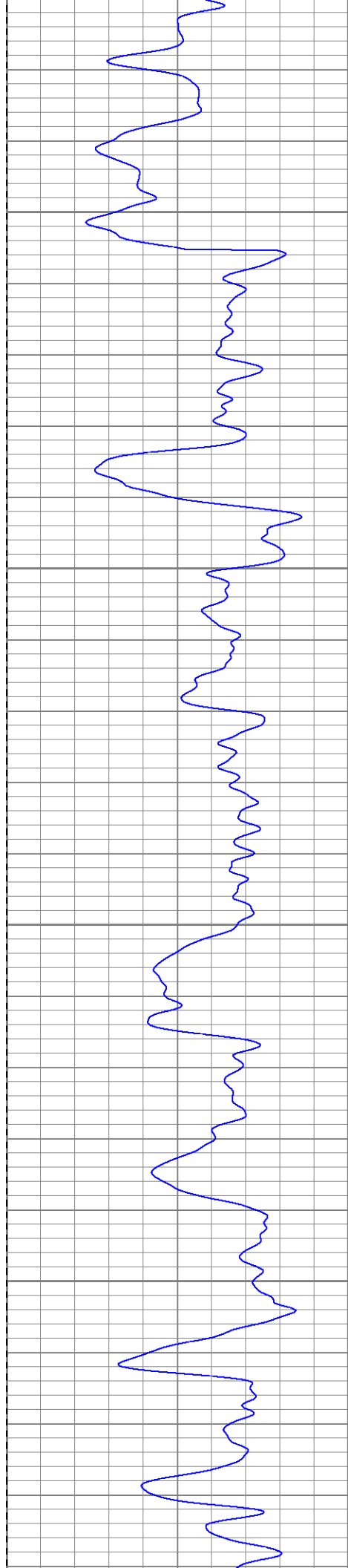
1150

1200

1250

1300



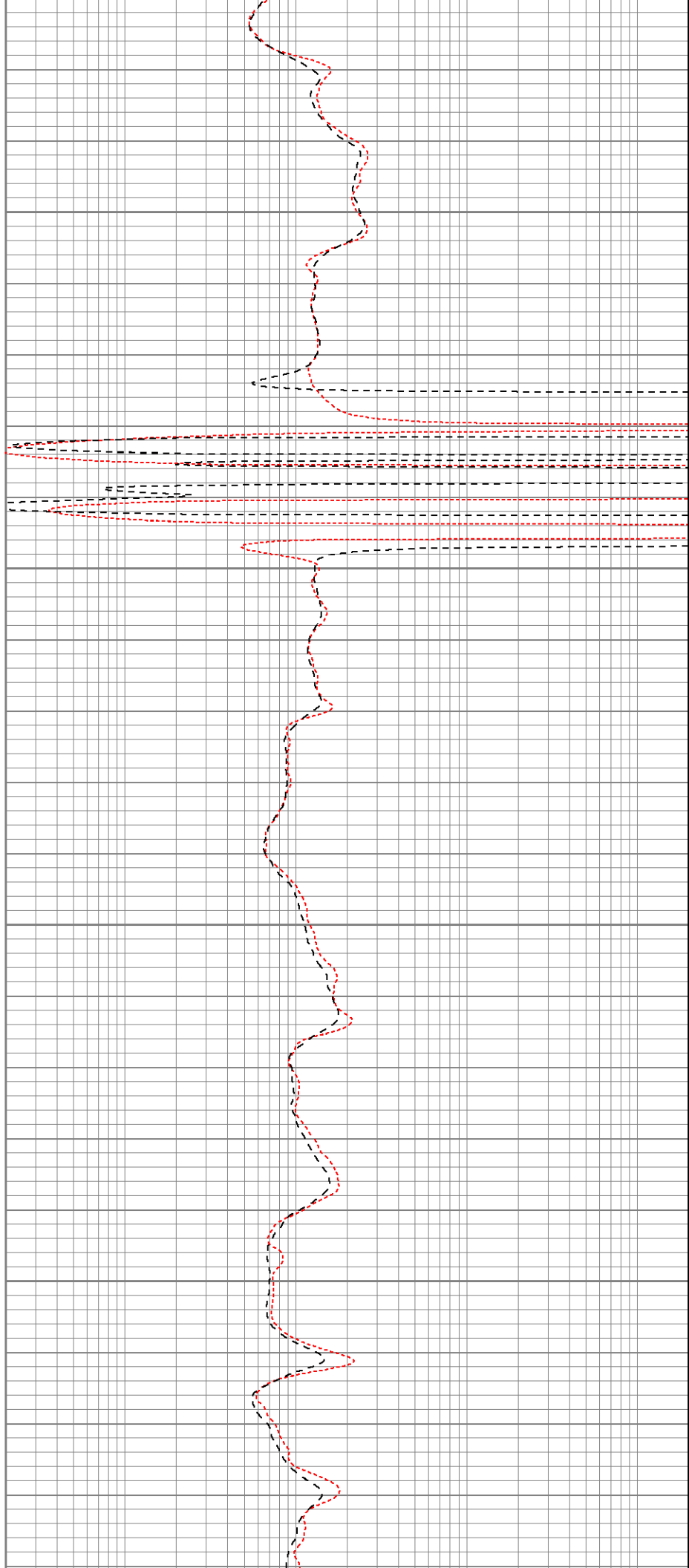


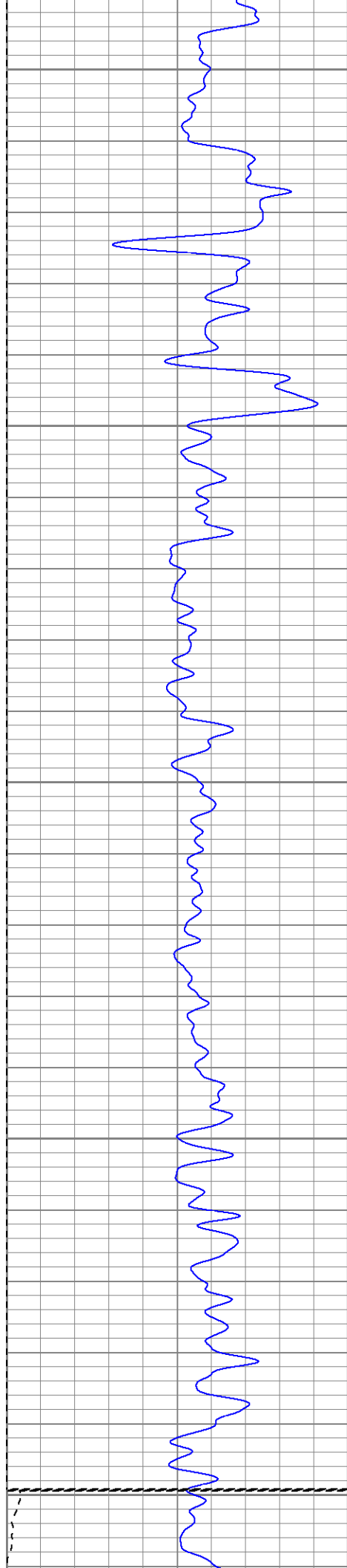
1350

1400

1450

1500





1550

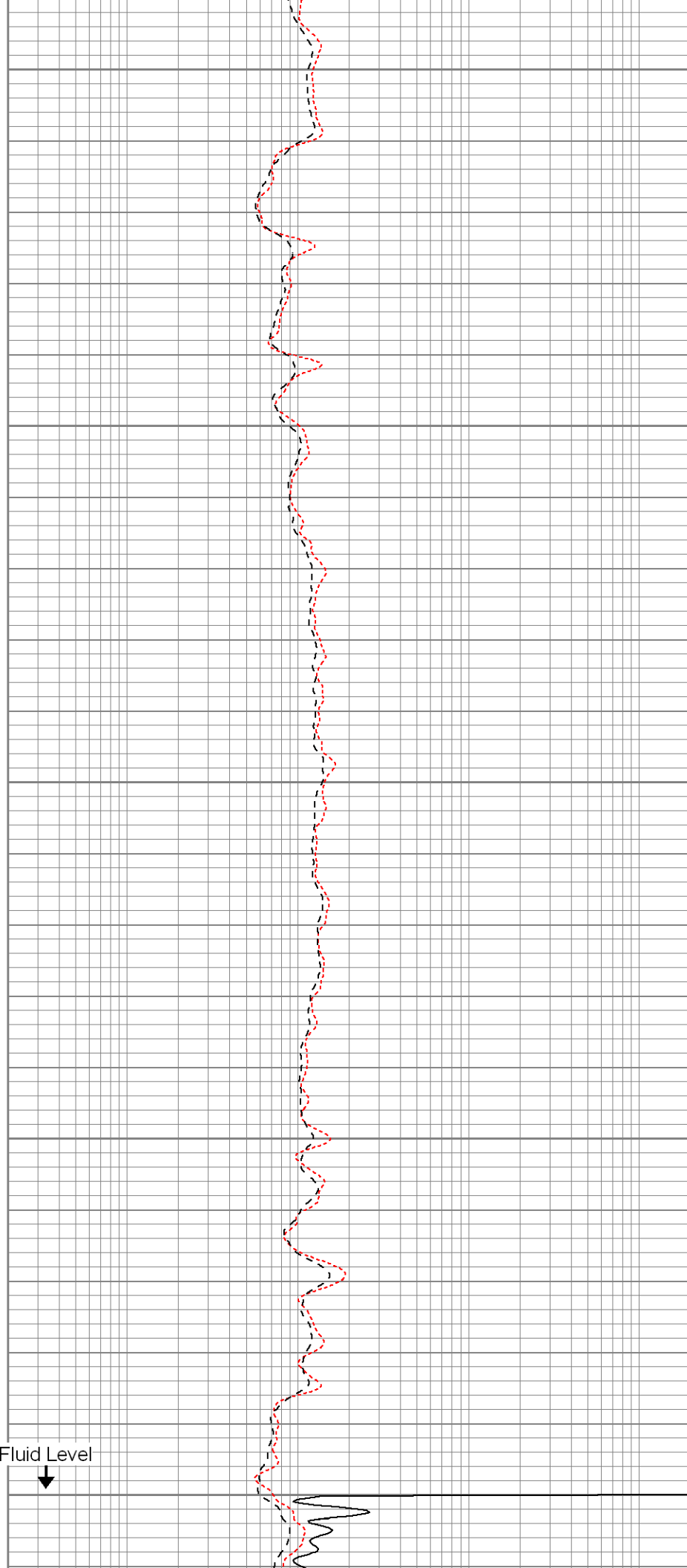
1600

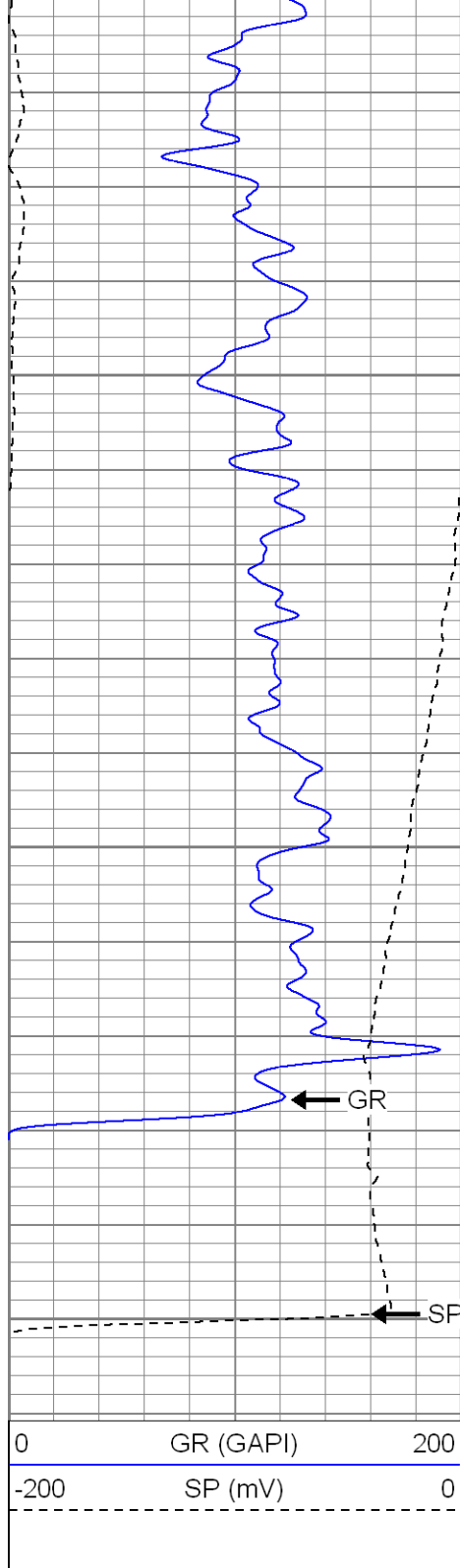
1650

1700

1750

Fluid Level

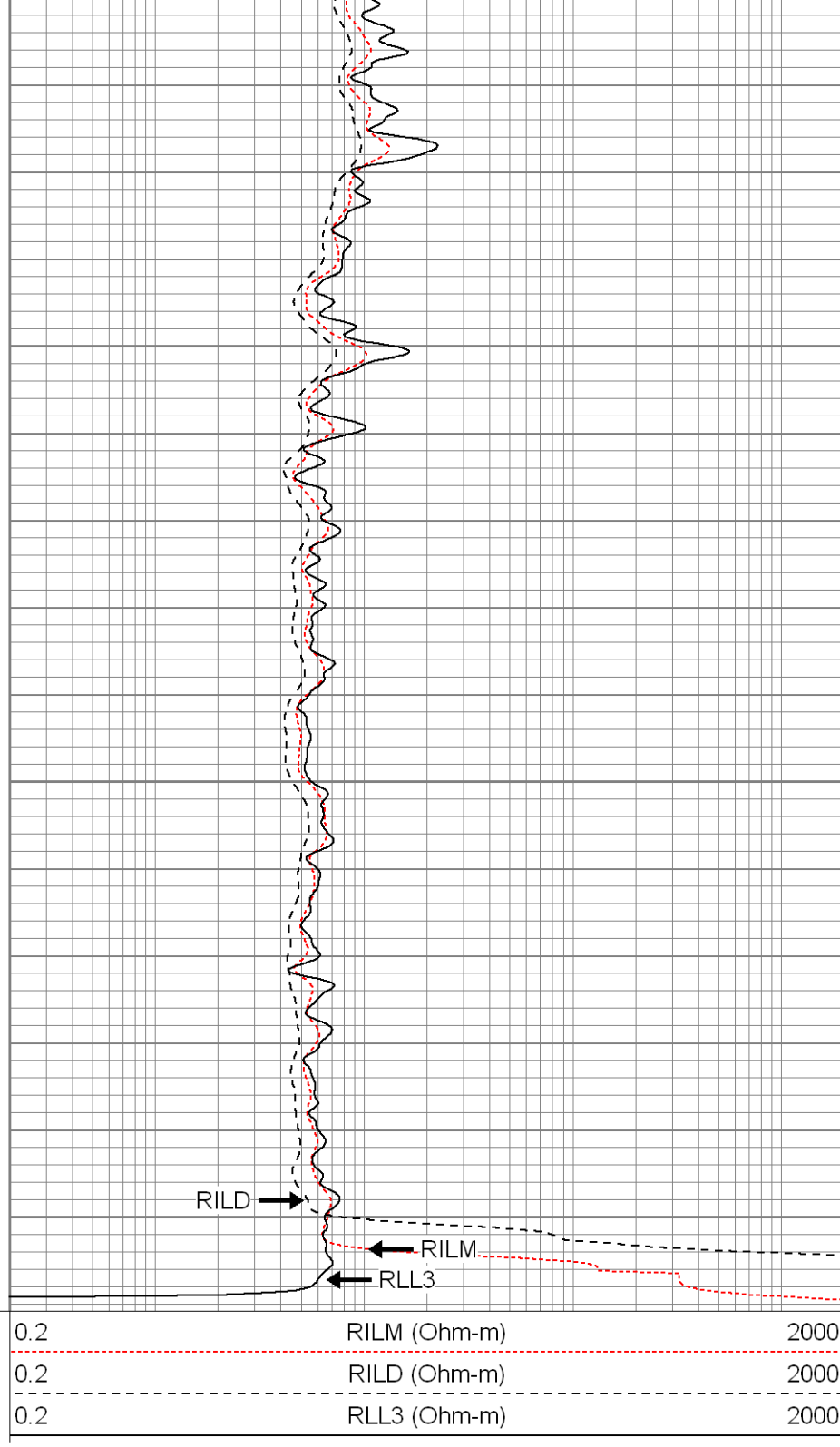




1800

1850

1900

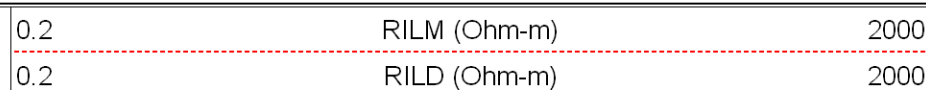
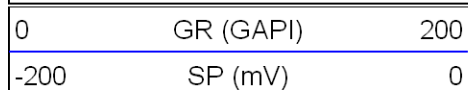


SUPERIOR

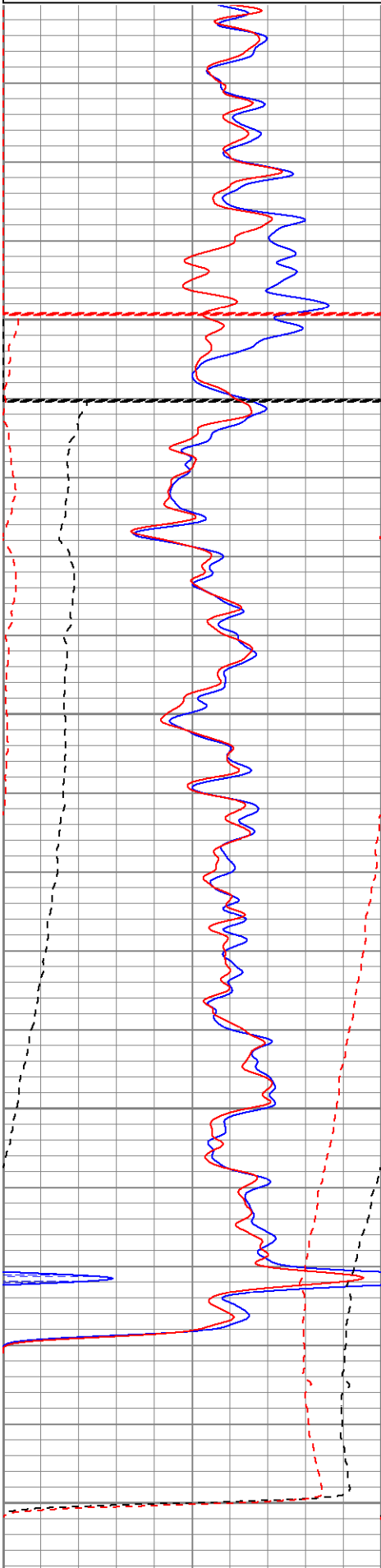
Black Lick, Pa.
Meroer, Pa.
Wooster, Oh.
Cleveland, Ok.
Trinidad, Co.

Repeat Pass

Database File: xtoge29-09-2.db
 Dataset Pathname: pass2.1
 Presentation Format: dil
 Dataset Creation: Wed Jan 23 14:55:42 2008 by Calc Open-Cased 070814
 Charted by: Depth in Feet scaled 1:240



0	GR-repeat (GAPI)	200
-200	SP-repeat (mV)	0



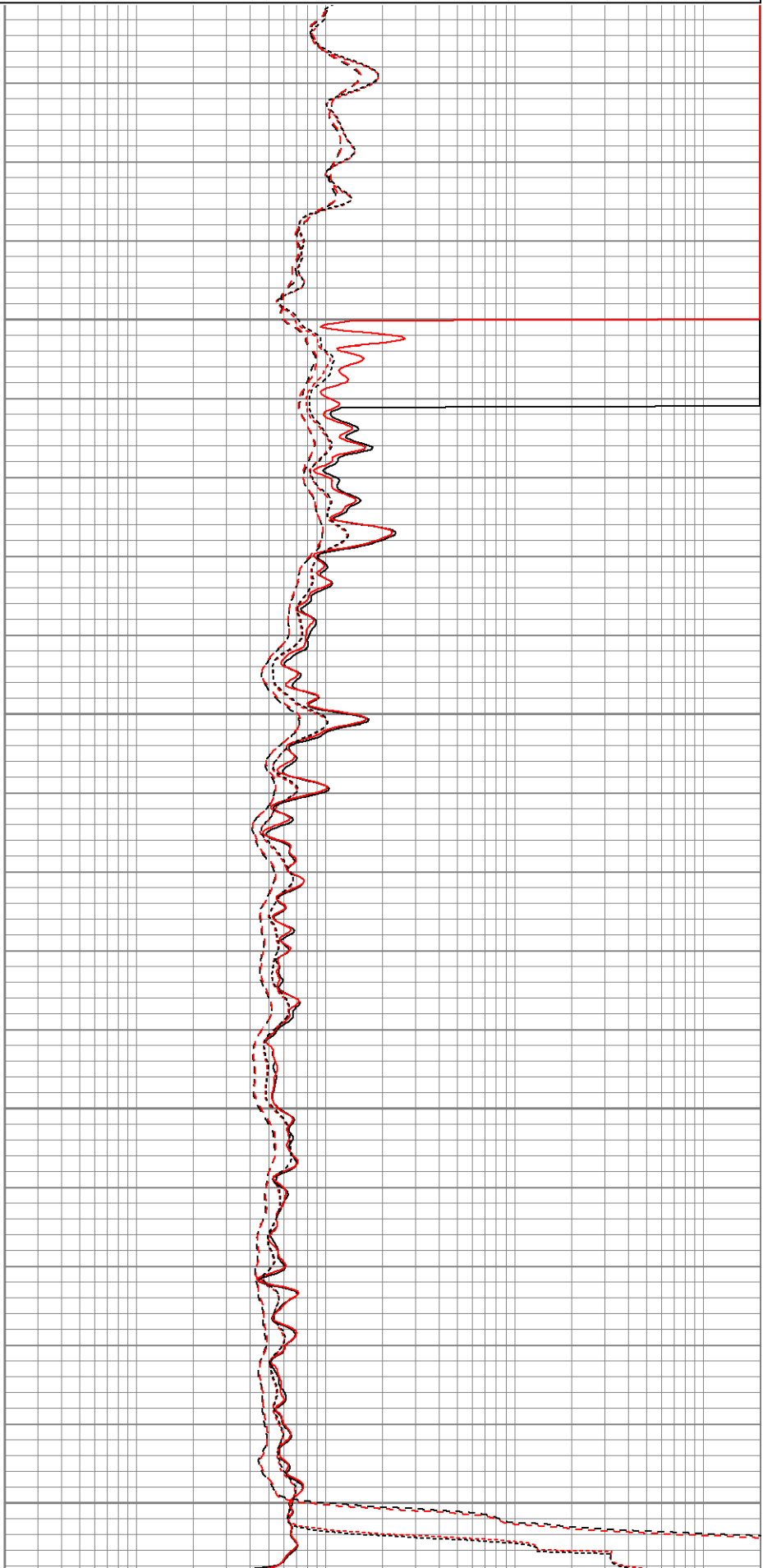
1750

1800

1850

1900

0.2	RLL3 (Ohm-m)	2000
0.2	RLL3-repeat (Ohm-m)	2000
0.2	RILM-repeat (Ohm-m)	2000
0.2	RILD-repeat (Ohm-m)	2000



0	GR (GAPI)	200	0.2	RILM (Ohm-m)	2000
-200	SP (mV)	0	0.2	RILD (Ohm-m)	2000
0	GR-repeat (GAPI)	200	0.2	RLL3 (Ohm-m)	2000
-200	SP-repeat (mV)	0	0.2	RLL3-repeat (Ohm-m)	2000
			0.2	RILM-repeat (Ohm-m)	2000
			0.2	RILD-repeat (Ohm-m)	2000

Calibration Report									
Database File:		xtoge29-09-2.db							
Dataset Pathname:		pass2							
Dataset Creation:		Wed Jan 23 12:26:48 2008 by Log Open-Cased 070814							
Dual Induction Calibration Report									
Serial-Model:		5375-G							
Surface Cal Performed:		Thu Jan 10 17:04:29 2008							
Downhole Cal Performed:		Thu Jan 10 17:05:58 2008							
Surface Calibration									
		Readings			References			Results	
Loop:	Air	Loop		Air	Loop		m	b	
Deep	0.001	0.621	V	0.000	500.000	mmho-m	807.348	-1.148	
Medium	0.005	0.745	V	0.000	550.000	mmho-m	743.100	-3.588	
Internal:	Zero	Cal		Zero	Cal		m	b	
Deep	0.001	0.621	V	0.000	500.000	mmho-m	806.966	-1.153	
Medium	0.005	0.745	V	0.000	550.000	mmho-m	742.904	-3.460	
Downhole Calibration									
		Readings			References			Results	
Internal:	Zero	Cal		Zero	Cal		m	b	
Deep	0.177	500.330	mmho-m	0.005	500.241	mmho-m	1.000	-0.172	
Medium	-0.163	549.964	mmho-m	-0.127	550.018	mmho-m	1.000	0.036	
Shallow	2.506	0.009	V	500.000	2.000	Ohm-m	125.000	-3.000	
Compensated Density Calibration Report									
Serial-Model:		2118-poilex							
Source / Verifier:		/							
Master Calibration Performed:		Tue Jan 08 02:47:05 2008							
Master Calibration									
		Density		Far Detector		Near Detector			
Magnesium	1.710	g/cc		718.08		683.29	cps		
Aluminum	2.590	g/cc		158.70		455.82	cps		
Spine Angle = 74.99				Density/Spine Ratio = 0.563					
		Size		Reading					
Small Ring	9.10	in		4.48	V				
Large Ring	14.00	in		8.06	V				

Gamma Ray Calibration Report		
Serial Number:	2001	
Tool Model:	OH	
Performed:	Tue Jan 08 10:28:42 2008	
Calibrator Value:	1.0	GAPI
Background Reading:	0.0	cps
Calibrator Reading:	1.0	cps
Sensitivity:	0.2500	GAPI/cps
Neutron Calibration Report		
Serial Number:	5145	
Tool Model:	G	
Performed:	Thu Jan 10 08:01:02 2008	
Calibrator Value:	1200	NAPI
Calibrator Reading:	1700	cps
Sensitivity:	1	NAPI/cps

Sensor	Offset (ft)	Schematic	Description	Len (ft)	OD (in)	Wt (lb)
NEU	37.19		None	0.75	1.50	5.00
			NEU-G (5145) Gearhart Epithermal	5.75	3.50	85.00
GR	31.62		GR-OH (2001) SIE	3.50	3.25	40.00
LSD DCAL SSD	23.45			CDL-poilex (2118)	8.79	4.00
	23.04					
	22.91					
CILD SP	10.60		DIL-G (5375) Gearhart	20.83	4.00	345.00
	10.60					
CILM	6.89					
RLL3	1.70					

Dataset:	xtoge29-09-2.db: field/well/run1/pass2
Total Length:	39.62 ft
Total Weight:	750.00 lb
O.D.	4.00 in