



SUPERIOR
Black Lick, Pa.
Mercer, Pa.
Wooster, Oh.
Cleveland, Ok.
Trinidad, Co.

DUAL INDUCTION LOG

Company XTO Energy Inc.
Well Golden Eagle 30-16
Field Purgatoire River
County Las Animas State Colorado

Location: API # : 05 071 09109 00

294' FSL & 881' FWL

SEC 30 TWP 33S RGE 67W

Permanent Datum Ground Level Elevation 7419'
Log Measured From Ground Level
Drilling Measured From Ground Level

Other Services
cdl
neutron
Elevation
K.B. -----
D.F. -----
G.L. 7419'

Date 02-24-07

Run Number One

Depth Driller 2050'

Depth Logger 2052'

Bottom Logged Interval 2050'

Top Log Interval Surface Casing

Casing Driller 8 5/8" @ 500'

Casing Logger 500'

Bit Size 7 7/8"

Type Fluid in Hole Water

Density / Viscosity ///

pH / Fluid Loss ///

Source of Sample ///

Rm @ Meas. Temp ///

Rmf @ Meas. Temp ///

Rmc @ Meas. Temp ///

Source of Rmf / Rmc ///

Rm @ BHT ///

Time Circulation Stopped 10:00 p.m./2-23-07

Time Logger on Bottom 12:05 a.m.

Maximum Recorded Temperature 110

Equipment Number T701

Location Trinidad

Recorded By L. Smith

Witnessed By Mr. Don Johnson

>>> Fold Here >>>

All interpretations are opinions based on inferences from electrical or other measurements and we cannot and do not guarantee the accuracy or correctness of any interpretation, and we shall not, except in the case of gross or willful negligence on our part, be liable or responsible for any loss, costs, damages, or expenses incurred or sustained by anyone resulting from any interpretation made by any of our officers, agents or employees. These interpretations are also subject to our general terms and conditions set out in our current Price Schedule.

Comments

Turn at Bosque 4mi. past Weston, up Ciruela Canyon, stay right at windmill, next right.



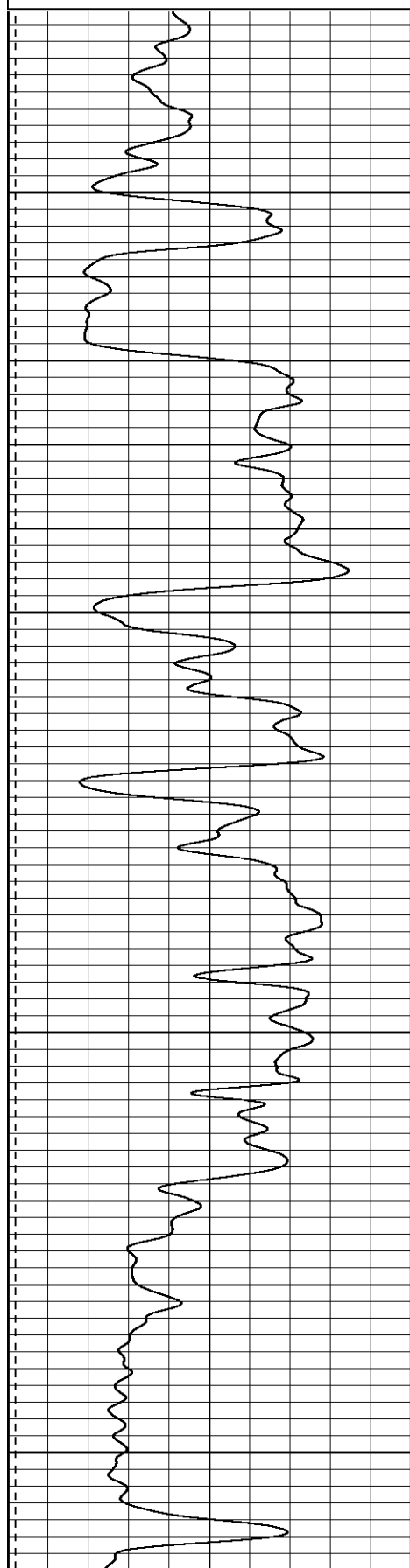
SUPERIOR
Black Lick, Pa.
Mercer, Pa.
Wooster, Oh.
Cleveland, Ok.
Trinidad, Co.

Main Pass

Database File: xtoge3016.db
Dataset Pathname: pass2.1
Presentation Format: dil
Dataset Creation: Sat Feb 24 01:37:50 2007 by Calc Open-Cased 061129
Charted by: Depth in Feet scaled 1:240

0	GR (GAPI)	200
-200	SP (mV)	0

0.2	RILD (Ohm-m)	2000
0.2	RILM (Ohm-m)	2000
0.2	RLL3 (Ohm-m)	2000

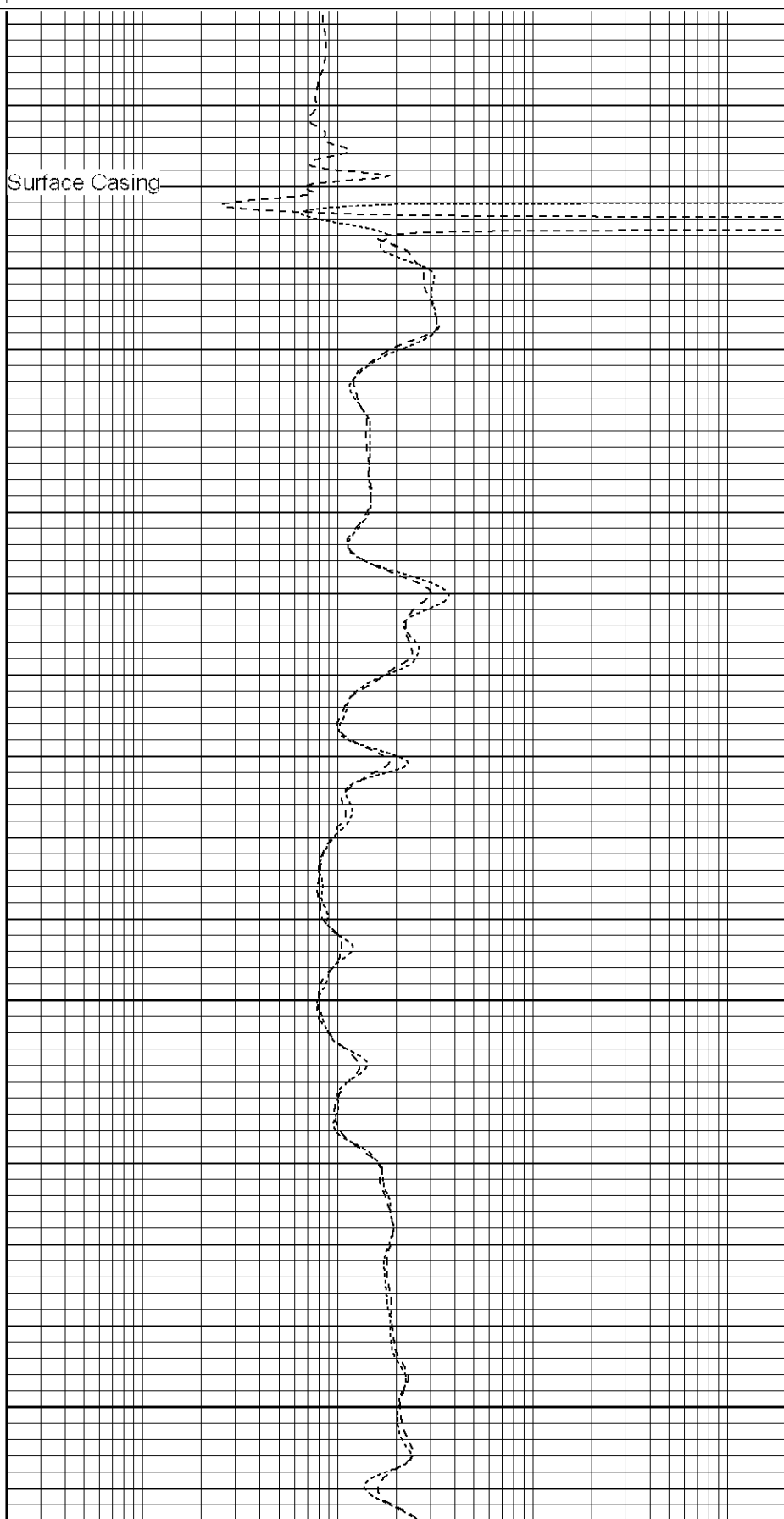


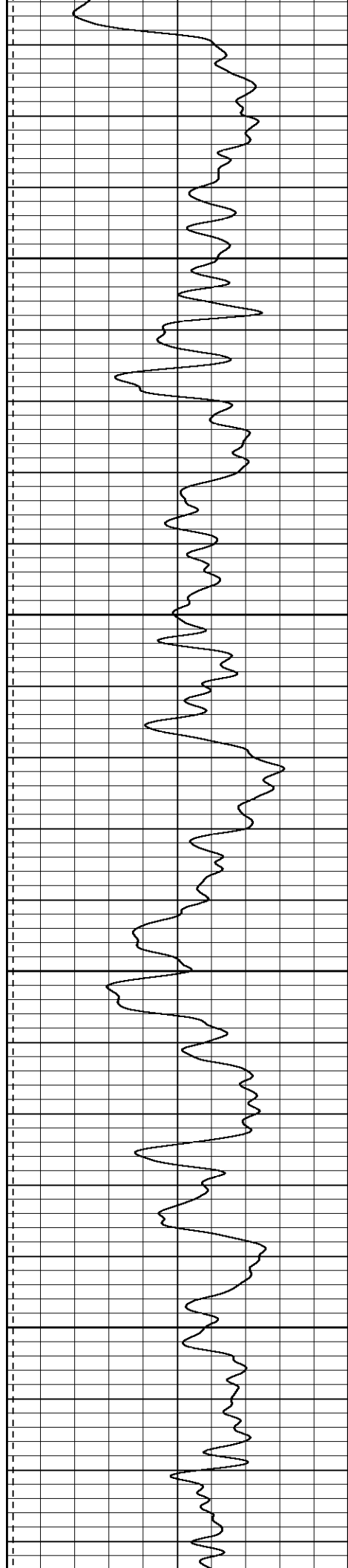
500

550

600

650



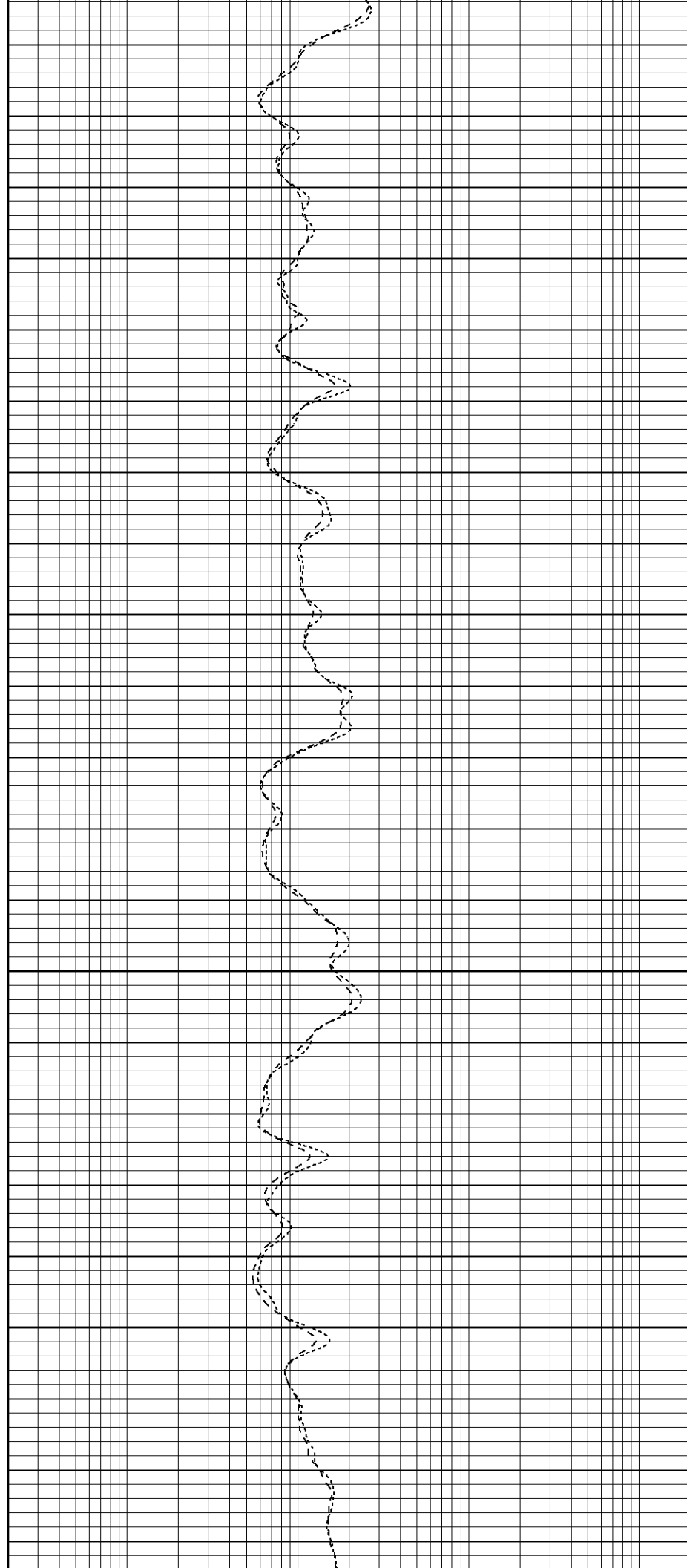


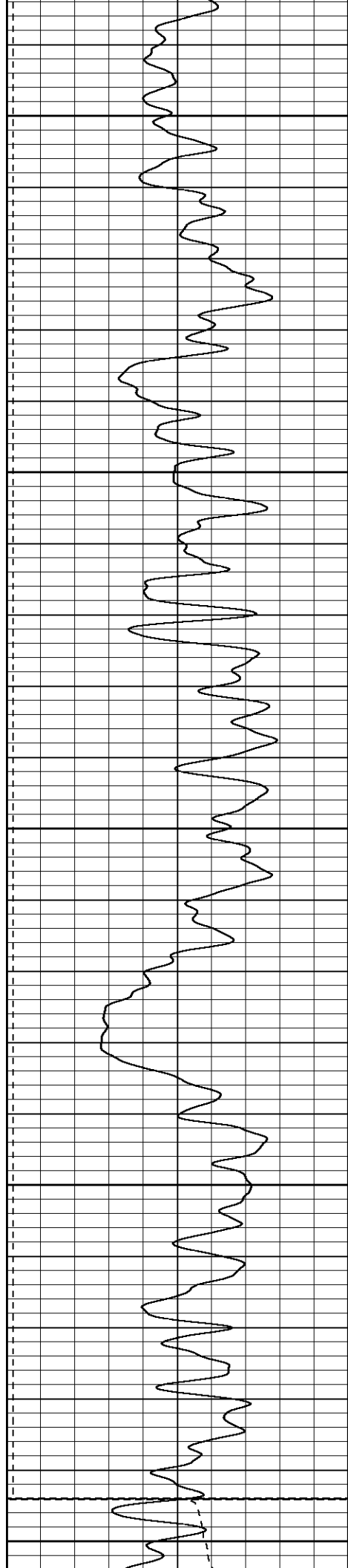
700

750

800

850





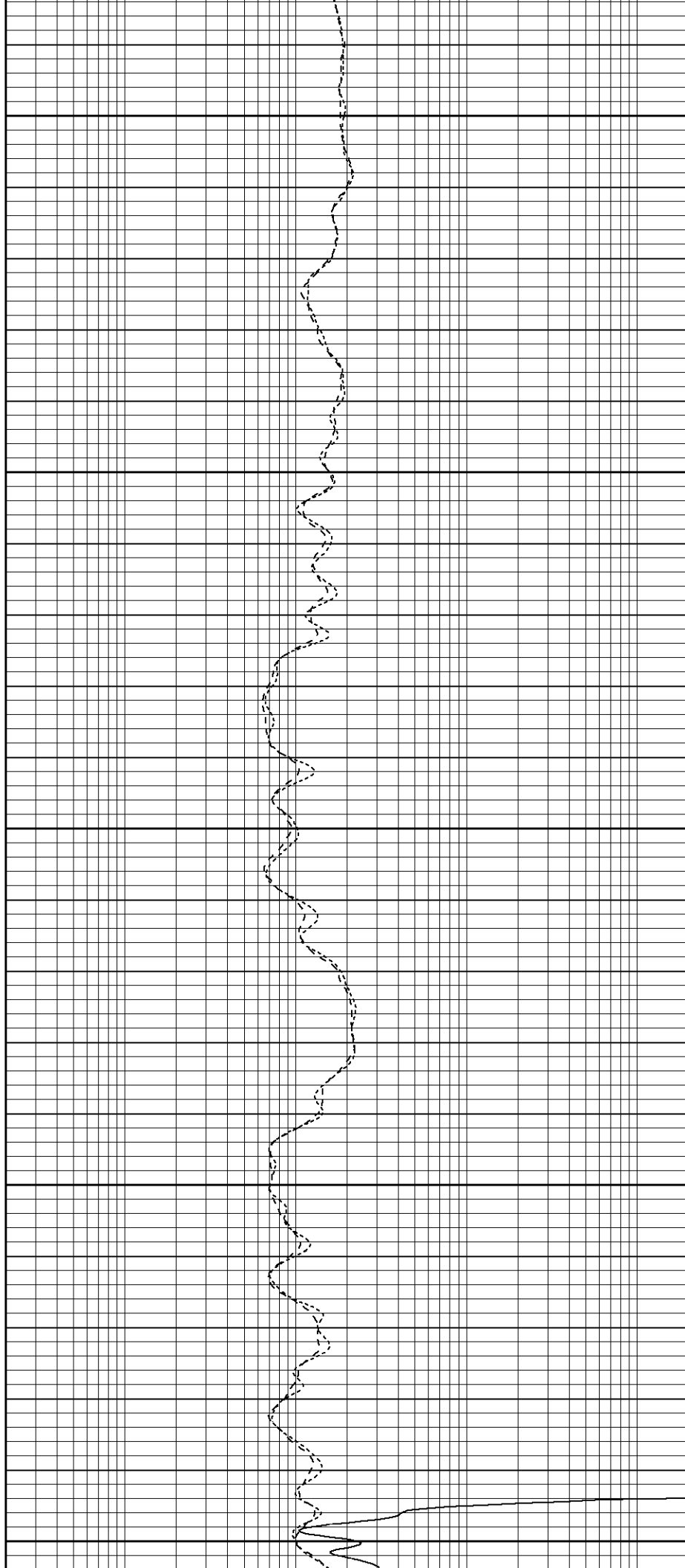
900

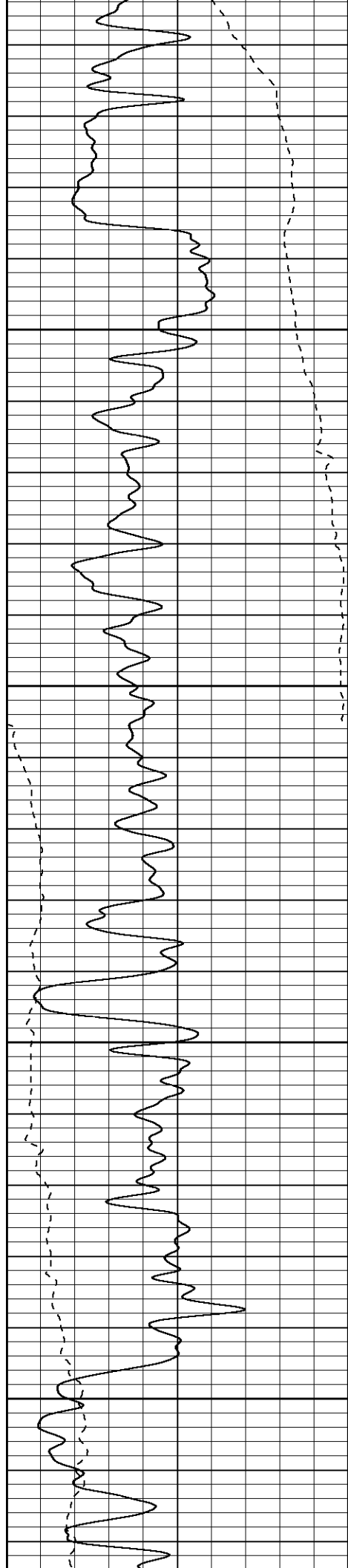
950

1000

1050

Air
1100



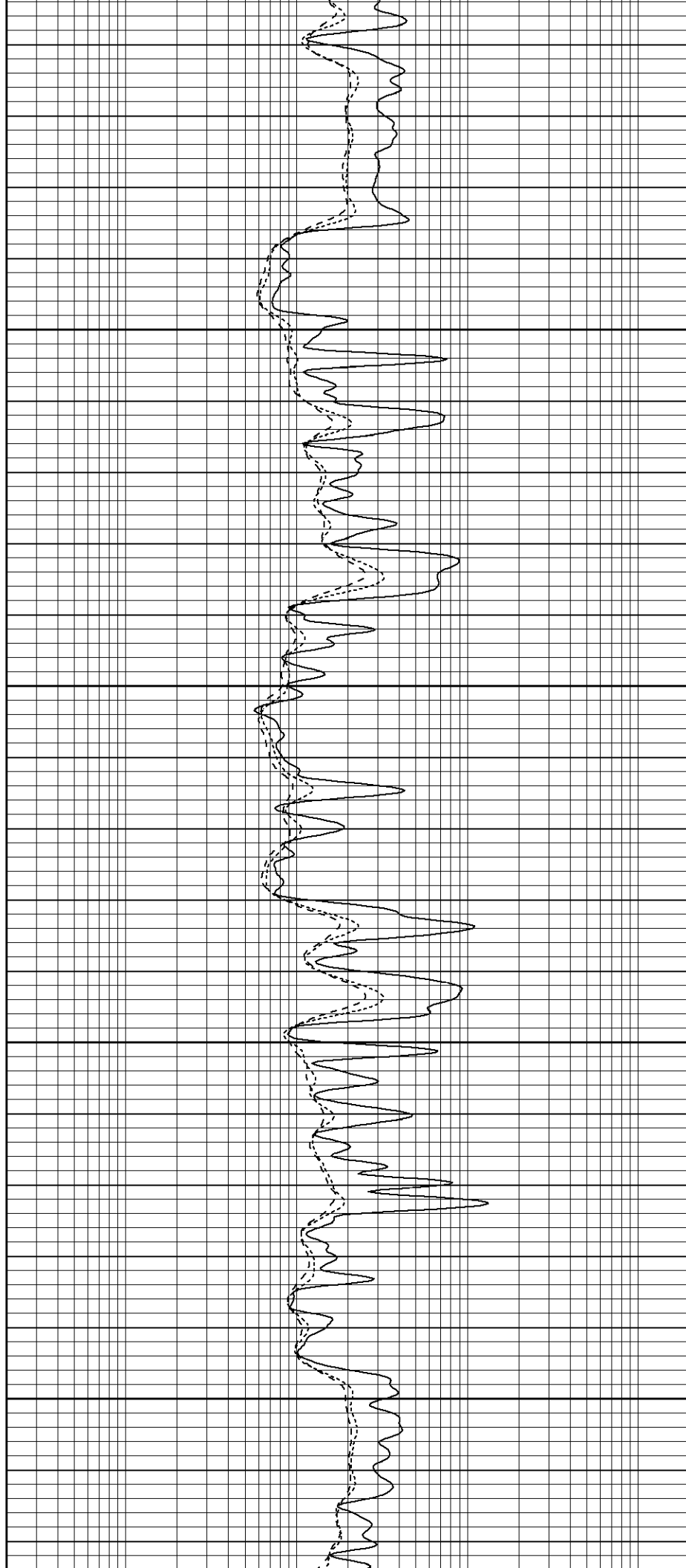


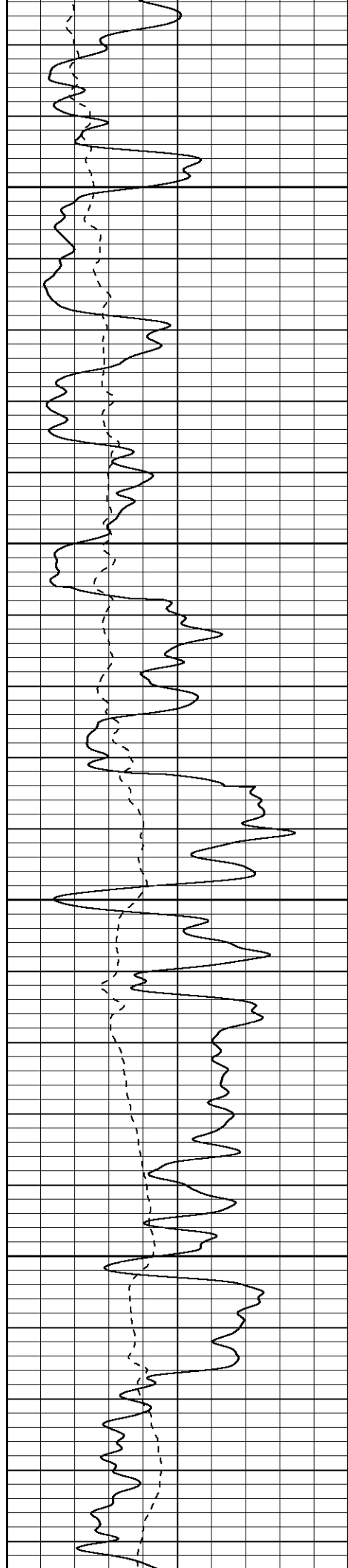
1150

1200

1250

1300



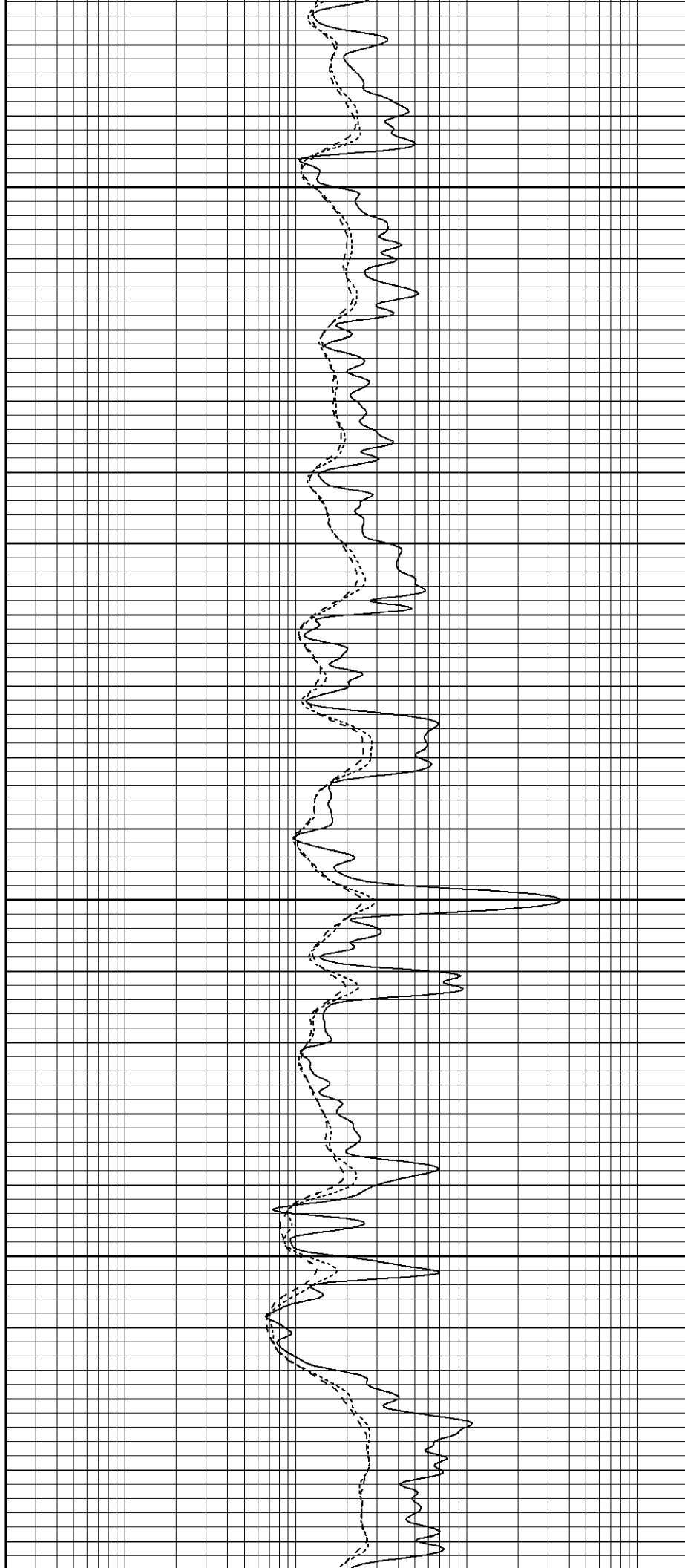


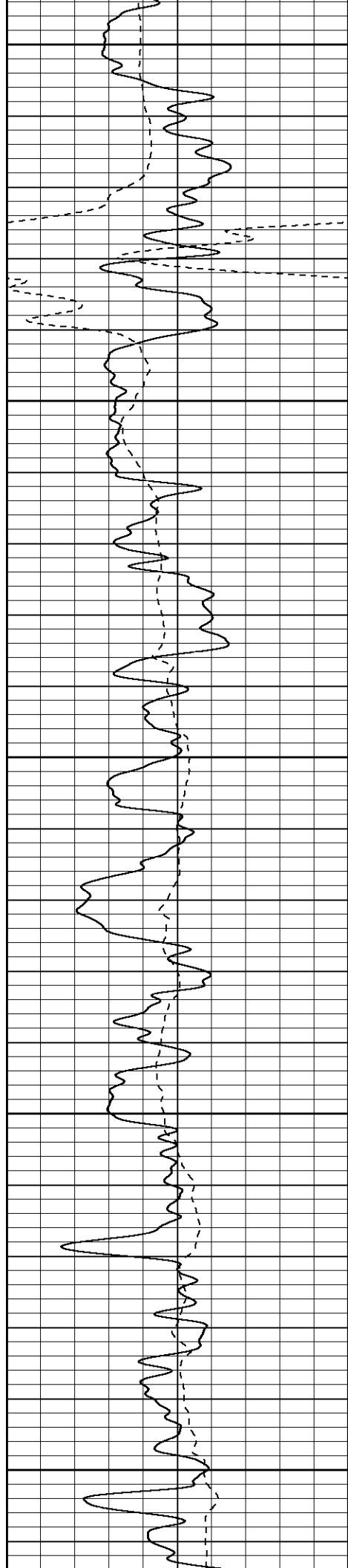
1350

1400

1450

1500





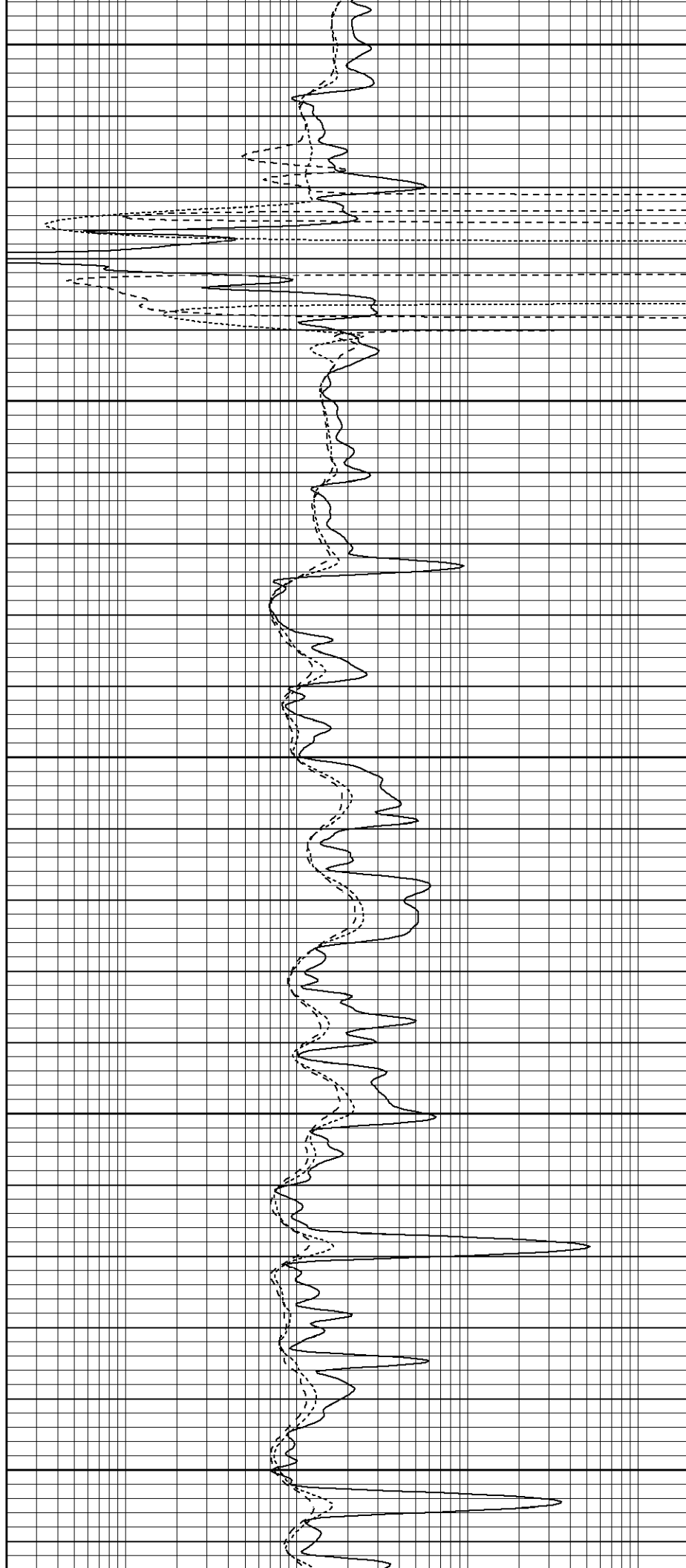
1550

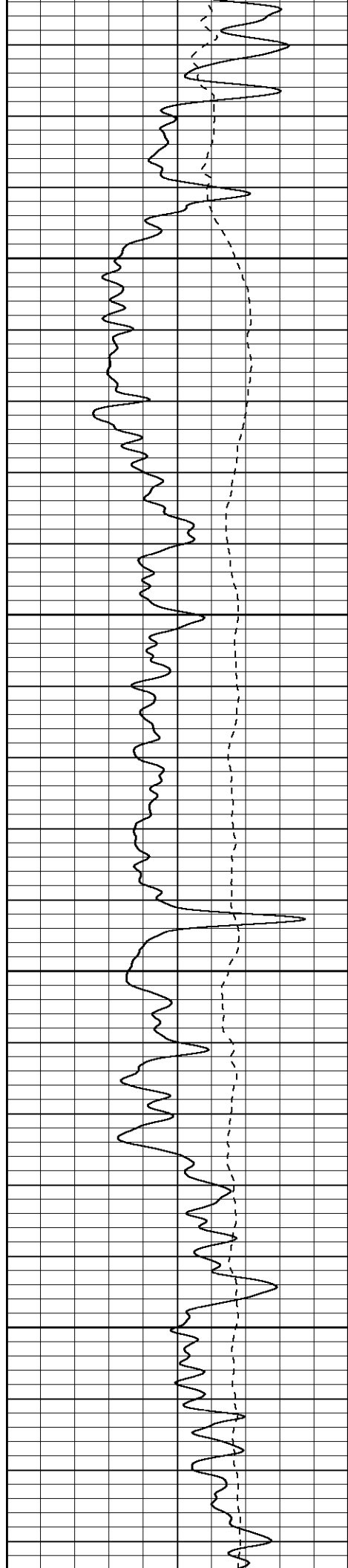
1600

1650

1700

1750



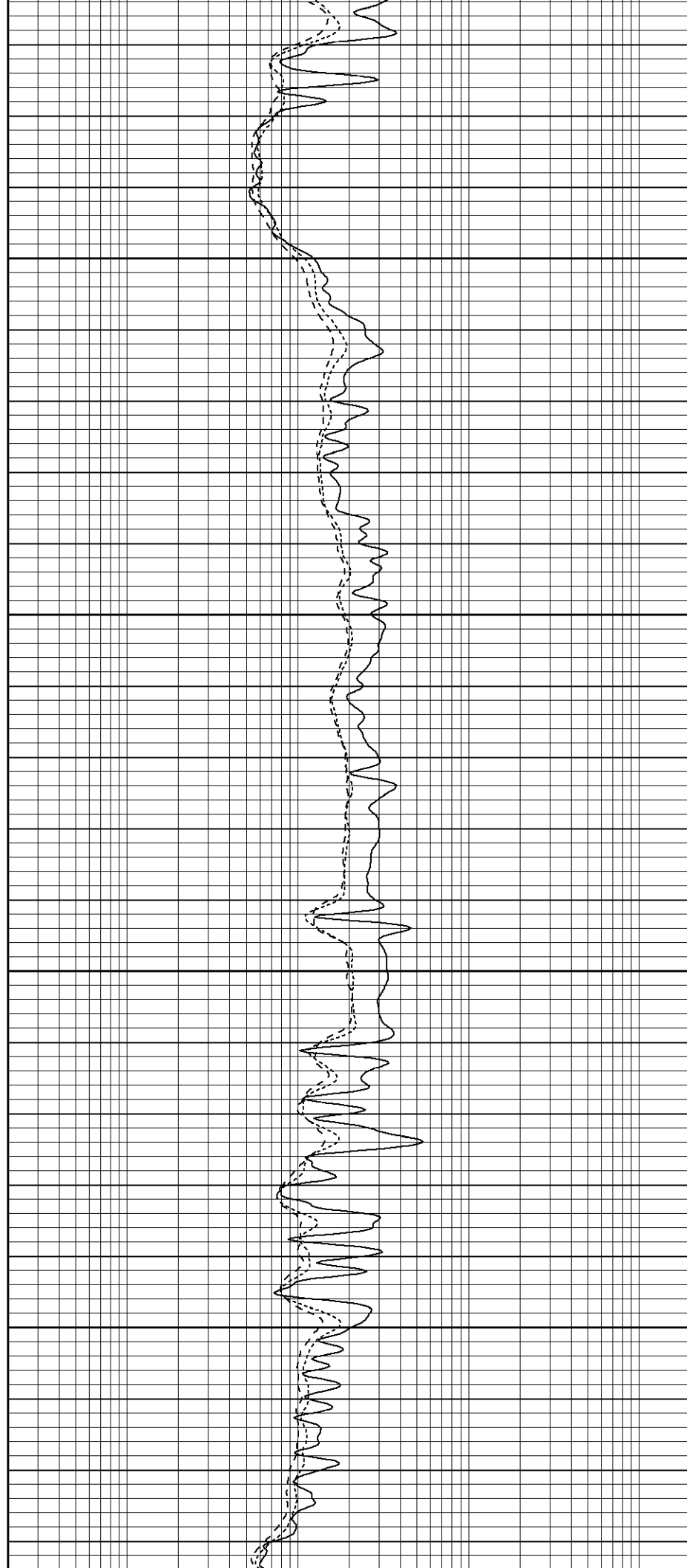


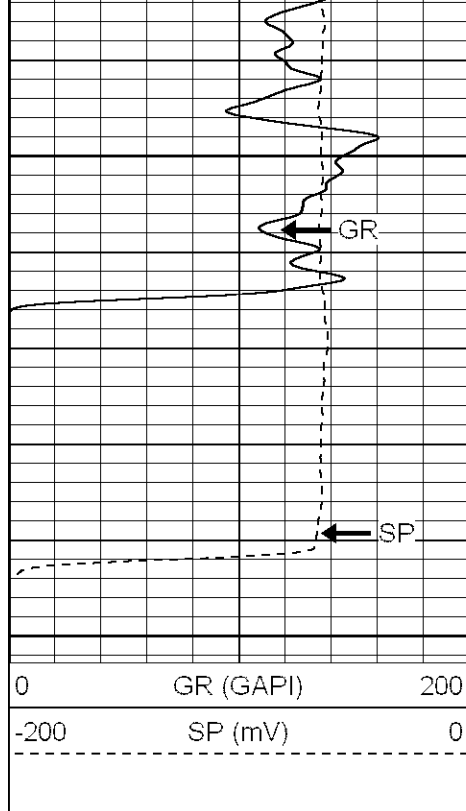
1800

1850

1900

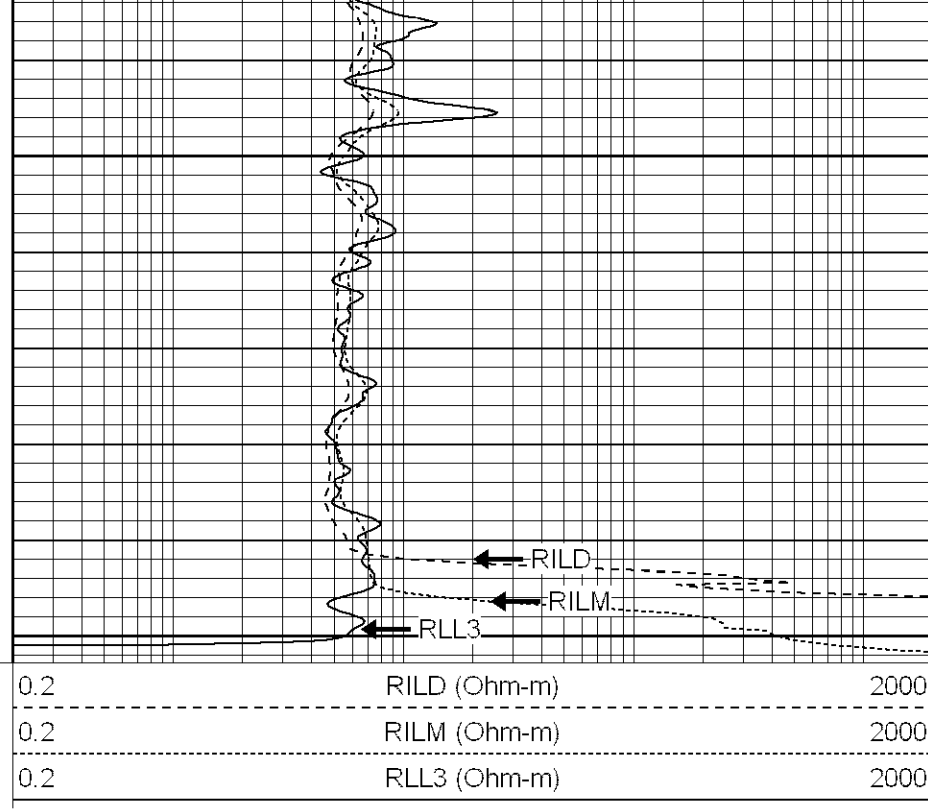
1950





2000

2050

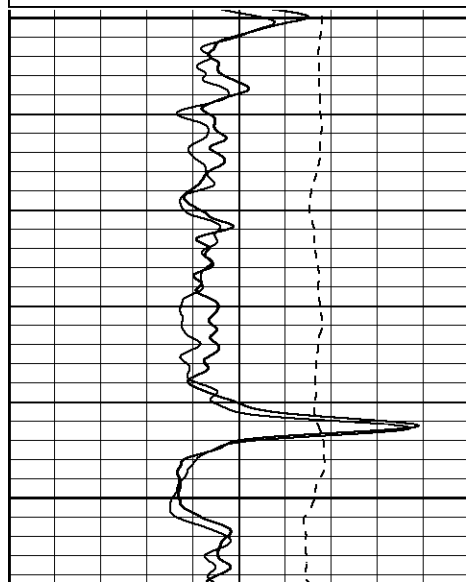
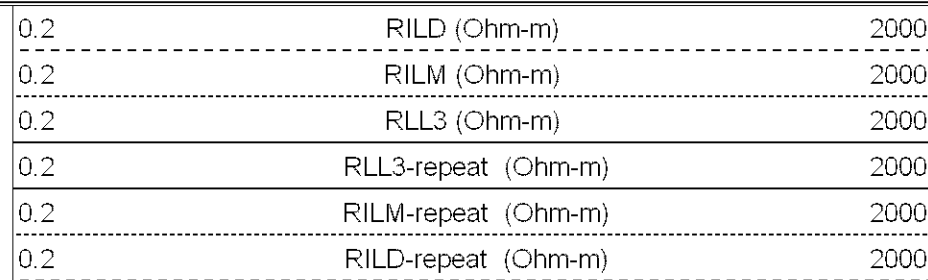
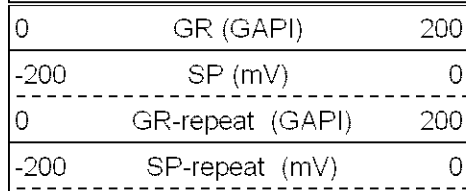


SUPERIOR

Black Lick, Pa.
Mercer, Pa.
Wooster, Oh.
Cleveland, Ok.
Trinidad, Co.

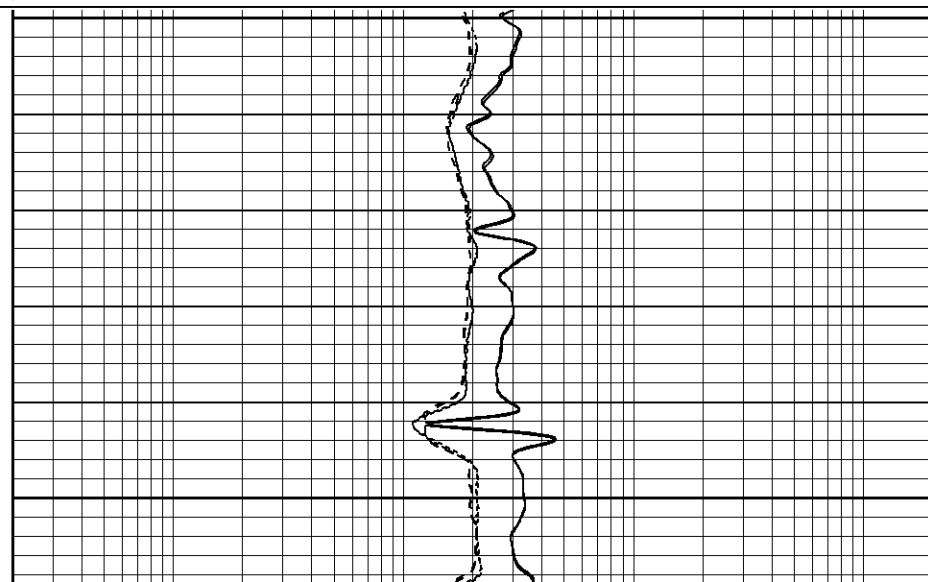
Repeat Pass

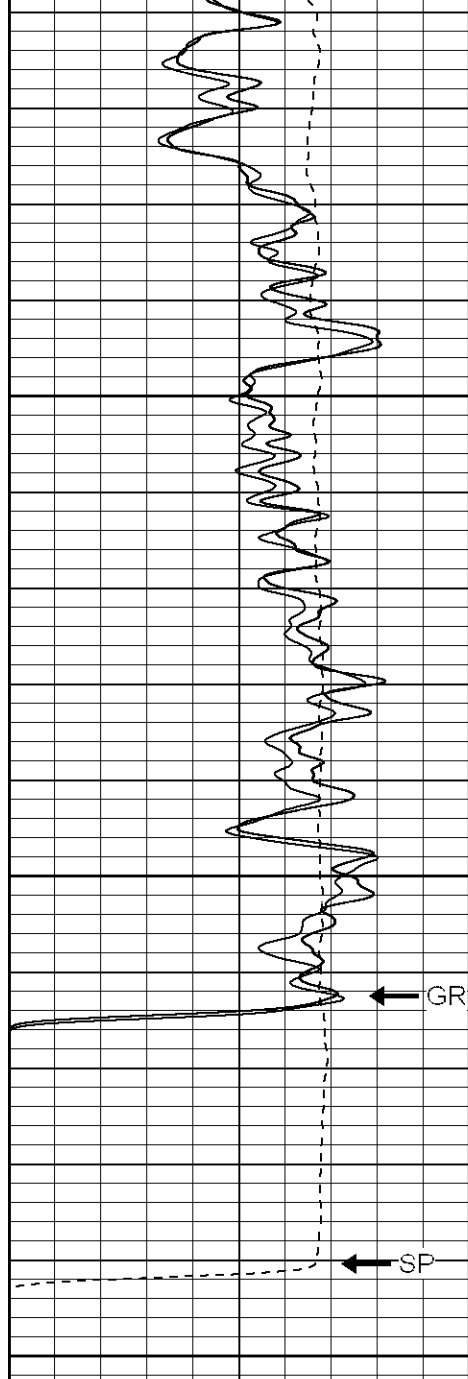
Database File: xtoge3016.db
Dataset Pathname: pass1.1
Presentation Format: dil
Dataset Creation: Sat Feb 24 00:48:56 2007 by Calc Open-Cased 061129
Charted by: Depth in Feet scaled 1:240



1850

1900



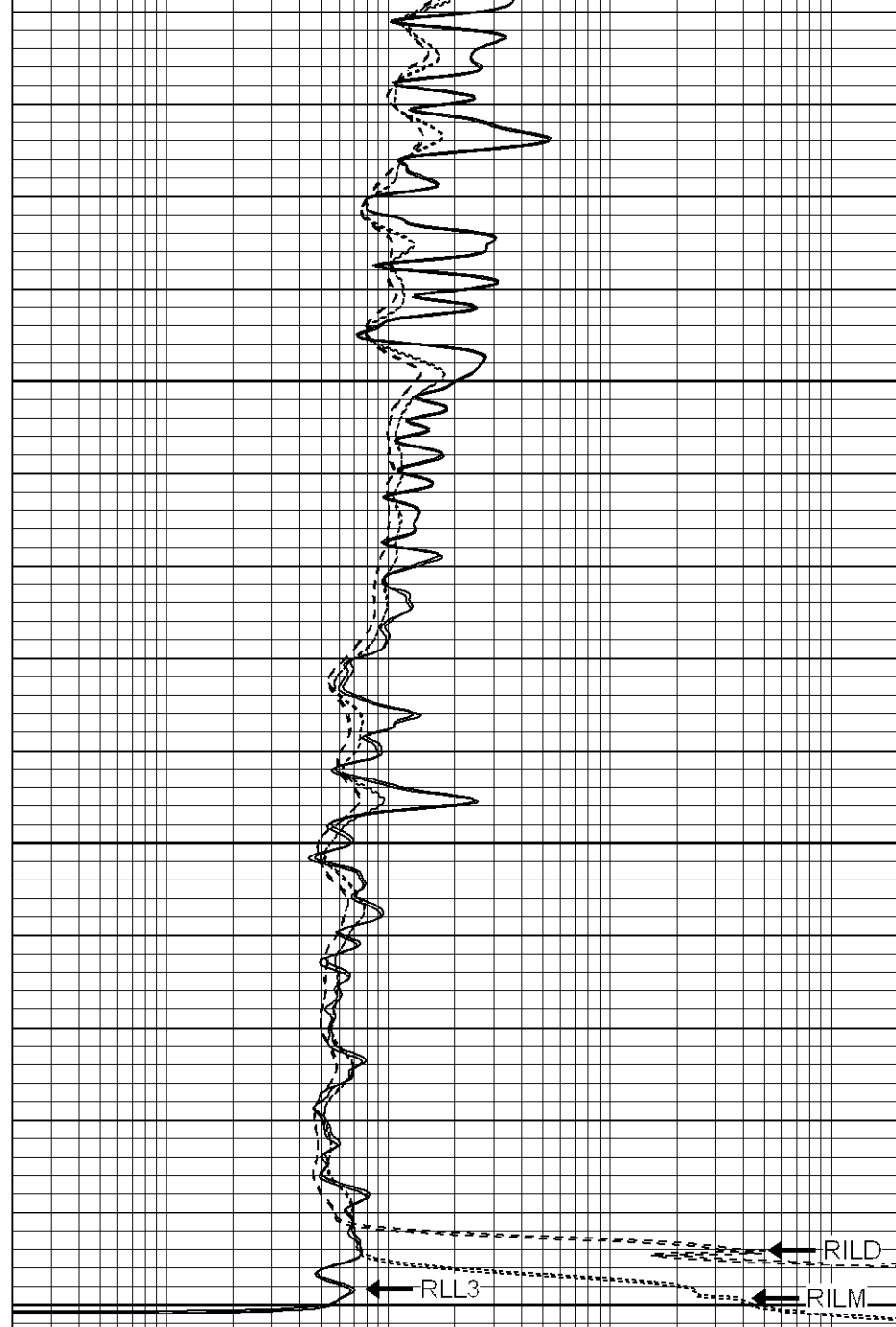


0	GR (GAPI)	200
-200	SP (mV)	0
0	GR-repeat (GAPI)	200
-200	SP-repeat (mV)	0

1950

2000

2050



0.2	RILD (Ohm-m)	2000
0.2	RILM (Ohm-m)	2000
0.2	RLL3 (Ohm-m)	2000
0.2	RLL3-repeat (Ohm-m)	2000
0.2	RILM-repeat (Ohm-m)	2000
0.2	RILD-repeat (Ohm-m)	2000

Calibration Report

Database File: xtoge3016.db
 Dataset Pathname: pass1
 Dataset Creation: Fri Feb 23 23:55:23 2007 by Log Open-Cased 061129

Dual Induction Calibration Report

Serial-Model: 5375-G
 Surface Cal Performed: Sun Feb 18 13:17:13 2007
 Downhole Cal Performed: Sun Feb 18 13:17:56 2007

Surface Calibration								
Loop:	Readings			References			Results	
	Air	Loop		Air	Loop		m	b
Deep	0.008	0.626	V	0.000	500.000	mmho-m	809.126	-6.267
Medium	0.010	0.748	V	0.000	550.000	mmho-m	745.979	-7.704
Internal:	Zero	Cal		Zero	Cal		m	b
Deep	0.008	0.626	V	0.000	500.000	mmho-m	809.454	-6.433
Medium	0.011	0.748	V	0.000	550.000	mmho-m	746.838	-8.278

Downhole Calibration								
Internal:	Readings			References			Results	
	Zero	Cal		Zero	Cal		m	b
Deep	-0.588	499.807	mmho-m	0.163	499.960	mmho-m	0.999	0.750
Medium	-0.423	549.681	mmho-m	0.565	549.932	mmho-m	0.999	0.987
Shallow	2.508	0.017	V	500.000	2.000	Ohm-m	159.862	-7.400

Compensated Density Calibration Report								
Serial-Model:				902-2.75POH				
Source / Verifier:				/				
Master Calibration Performed:				Fri Feb 09 11:24:21 2007				

Master Calibration								
	Density			Far Detector		Near Detector		
Magnesium	1.710	g/cc		1015.57		498.52	cps	
Aluminum	2.590	g/cc		183.60		250.82	cps	
Spine Angle = 68.12				Density/Spine Ratio = 0.477				
	Size			Reading				
Small Ring	7.95	in		1.84	V			
Large Ring	17.00	in		4.32	V			

Neutron Calibration Report								
Serial Number:			802					
Tool Model:			2.75POH					
Performed:			Fri Feb 09 08:32:01 2007					
Calibrator Value:			1	NAPI				
Calibrator Reading:			1	cps				
Sensitivity:			1	NAPI/cps				

Gamma Ray Calibration Report								
Serial Number:			804					
Tool Model:			2.75POH					
Performed:			Fri Feb 09 00:46:24 2007					
Calibrator Value:			1.0	GAPI				
Background Reading:			0.0	cps				
Calibrator Reading:			1.0	cps				

GAPI/cps

Dataset: xtoge3016.db: field/well/run1/pass1
Total Length: 39.37 ft
Total Weight: 577.00 lb
O.D. 4.00 in