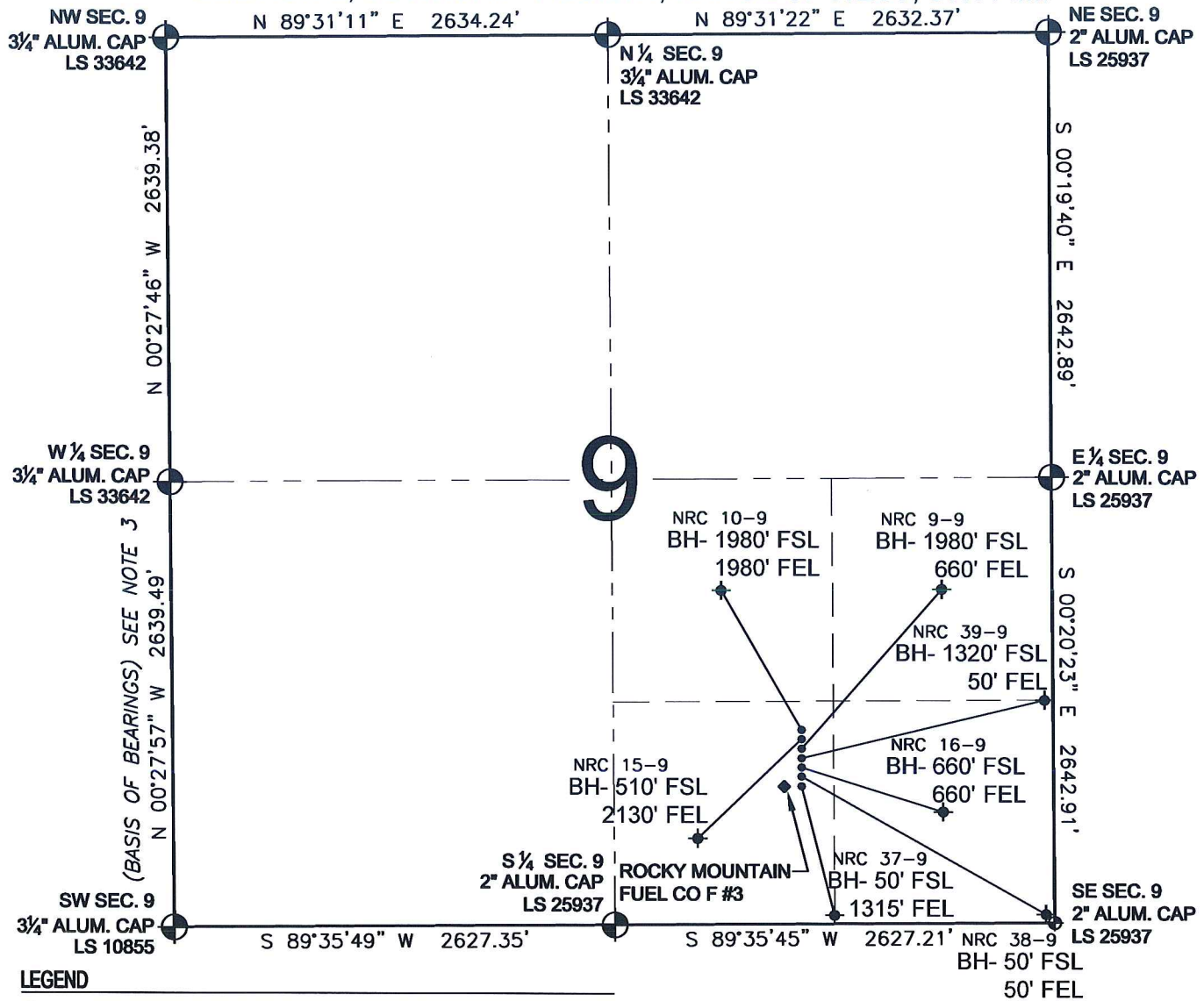


PAD DRAWING - NRC 7 PAD

SECTION 9, TOWNSHIP 1 NORTH, RANGE 67 WEST, 6TH P.M.



LEGEND

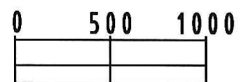
- = EXISTING MONUMENT
 = BOTTOM HOLE
 BH= BOTTOM HOLE
 = PROPOSED WELL
 = EXISTING WELL

NOTES:

- THIS SURVEY WAS DONE BY GPS METHODS AND CONFORMS TO THE MINIMUM STANDARDS SET BY THE C.O.G.C.C., RULE NO. 215
- ELEVATIONS SHOWN AT THE WELL HEAD, AS WELL AS HORIZONTAL CONTROL, ARE BASED ON GPS-RTK VALUES DERIVED FROM DOING 2-HOUR STATIC GPS SESSIONS AND REDUCTIONS USING O.P.U.S. SOLUTIONS.
VERTICAL = NAVD88; HORIZONTAL = NAD83/92
- THE BEARINGS SHOWN HEREON ARE BASED ON GPS OBSERVATIONS BETWEEN THE MONUMENTS SHOWN HEREON AS FOUND ON THE FIELD DATE BELOW.
- DISTANCES SHOWN ARE AT GROUND LEVEL, AS MEASURED IN THE FIELD, WITH TIES TO WELLS MEASURED AT A PERPENDICULAR TO SECTION LINES.

NOTES:

NRC 10-9 TO BE AT 1150' FSL, 1504' FEL.
 BOTTOM HOLE AT 1980' FSL & 1980' FEL.
 NRC 15-9 TO BE AT 1134' FSL, 1503' FEL.
 BOTTOM HOLE AT 510' FSL & 2130' FEL.
 NRC 9-9 TO BE AT 1118' FSL, 1502' FEL.
 BOTTOM HOLE AT 1980' FSL & 660' FEL.
 NRC 39-9 TO BE AT 1103' FSL, 1502' FEL.
 BOTTOM HOLE AT 1320' FSL & 50' FEL.
 NRC 16-9 TO BE AT 1086' FSL, 1501' FEL.
 BOTTOM HOLE AT 660' FSL & 660' FEL.
 NRC 38-9 TO BE AT 1071' FSL, 1500' FEL.
 BOTTOM HOLE AT 50' FSL & 50' FEL.
 NRC 37-9 TO BE AT 1055' FSL, 1499' FEL.
 BOTTOM HOLE AT 50' FSL & 1315' FEL.
 ROCKY MOUNTAIN FUEL CO F #3 IS 1055' FSL, 1548' FEL.



SCALE: 1"=1000'

REVISIONS

| INITIAL | DATE |
|---------|------|
| | |
| | |
| | |
| | |
| | |

PREPARED BY:

PFS

Petroleum Field Services, LLC
1801 W. 13th Ave.
Denver, CO 80204



KERR-MCGEE OIL & GAS ONSHORE LP

FIELD DATE:
12-11-09

DRAWING DATE:
12-14-09

BY:
SMF

PAD NAME:
NRC 7 PAD

SURFACE LOCATION:

WELD COUNTY, COLORADO
SW 1/4 SE 1/4, SEC. 9, T1N, R67W