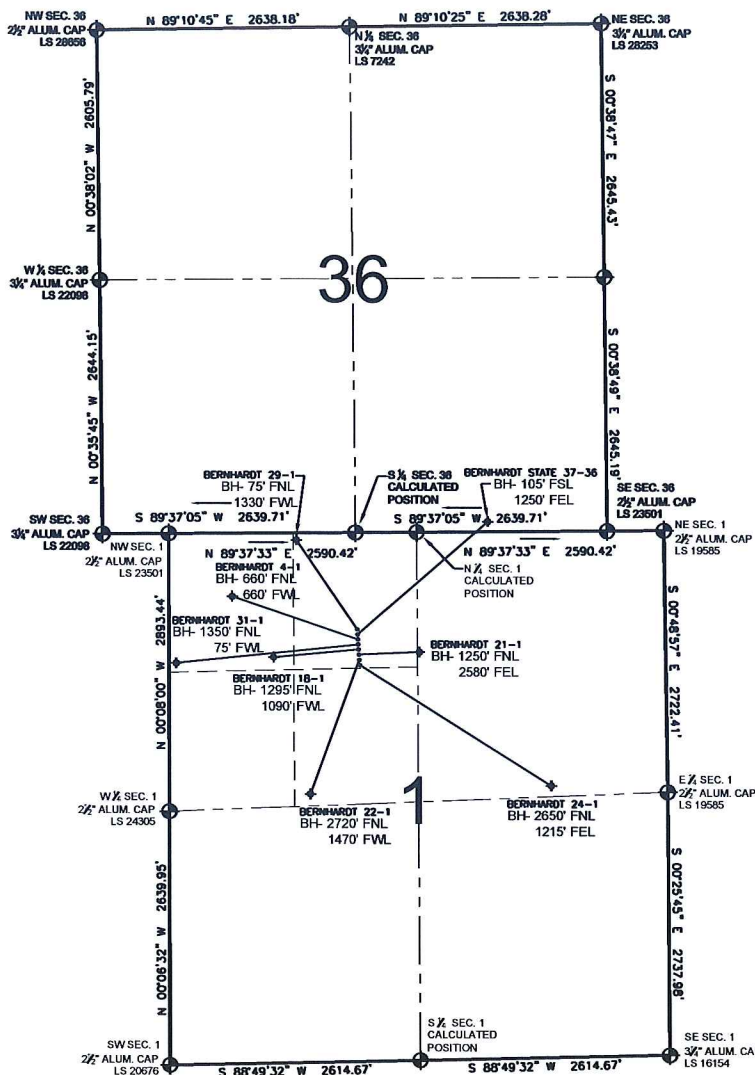


# PAD DRAWING - BERNHARDT 8 PAD

SECTION 1, TOWNSHIP 4 NORTH, RANGE 67 WEST, 6TH P.M.



## LEGEND

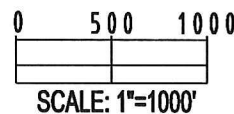
- = EXISTING MONUMENT   
 = BOTTOM HOLE   
 BH= BOTTOM HOLE  
 = PROPOSED WELL   
 = EXISTING WELL

## NOTES:

- THIS SURVEY WAS DONE BY GPS METHODS AND CONFORMS TO THE MINIMUM STANDARDS SET BY THE C.O.G.C.C., RULE NO. 215
- ELEVATIONS SHOWN AT THE WELL HEAD, AS WELL AS HORIZONTAL CONTROL, ARE BASED ON GPS-RTK VALUES DERIVED FROM DOING 2-HOUR STATIC GPS SESSIONS AND REDUCTIONS USING O.P.U.S. SOLUTIONS.  
VERTICAL = NAVD88; HORIZONTAL = NAD83/92
- THE BEARINGS SHOWN HEREON ARE BASED ON GPS OBSERVATIONS BETWEEN THE MONUMENTS SHOWN HEREON AS FOUND ON THE FIELD DATE BELOW.
- DISTANCES SHOWN ARE AT GROUND LEVEL, AS MEASURED IN THE FIELD, WITH TIES TO WELLS MEASURED AT A PERPENDICULAR TO SECTION LINES.

## NOTES:

- BERNHARDT 29-1 TO BE AT 1287' FNL, 1985' FWL.  
 BOTTOM HOLE AT 75' FNL & 1330' FWL.  
 BERNHARDT STATE 37-36 TO BE AT 1303' FNL, 1985' FWL.  
 BOTTOM HOLE AT 105' FSL & 1250' FEL.  
 BERNHARDT 4-1 TO BE AT 1319' FNL, 1987' FWL.  
 BOTTOM HOLE AT 660' FNL & 660' FWL.  
 BERNHARDT 31-1 TO BE AT 1335' FNL, 1988' FWL.  
 BOTTOM HOLE AT 1350' FNL & 75' FWL.  
 BERNHARDT 18-1 TO BE AT 1351' FNL, 1989' FWL.  
 BOTTOM HOLE AT 1295' FNL & 1090' FWL.  
 BERNHARDT 21-1 TO BE AT 1367' FNL, 1990' FWL.  
 BOTTOM HOLE AT 1250' FNL & 2580' FEL.  
 BERNHARDT 22-1 TO BE AT 1383' FNL, 1991' FWL.  
 BOTTOM HOLE AT 2720' FNL & 1470' FWL.  
 BERNHARDT 24-1 TO BE AT 1399' FNL, 1991' FWL.  
 BOTTOM HOLE AT 2650' FNL & 1215' FEL.



## REVISIONS

| INITIAL | DATE     |
|---------|----------|
| SMF     | 09-22-09 |
|         |          |
|         |          |
|         |          |
|         |          |

PREPARED BY:

**PFS**

Petroleum Field Services, LLC  
1801 W. 13th Ave.  
Denver, CO 80204



KERR-MCGEE OIL & GAS ONSHORE LP

FIELD DATE:  
08-26-09

DRAWING DATE:  
09-02-09

BY:  
SMF

PAD NAME:  
BERNHARDT 8 PAD

SURFACE LOCATION:

WELD COUNTY, COLORADO  
NE 1/4 NW 1/4, SEC. 1, T4N, R67W