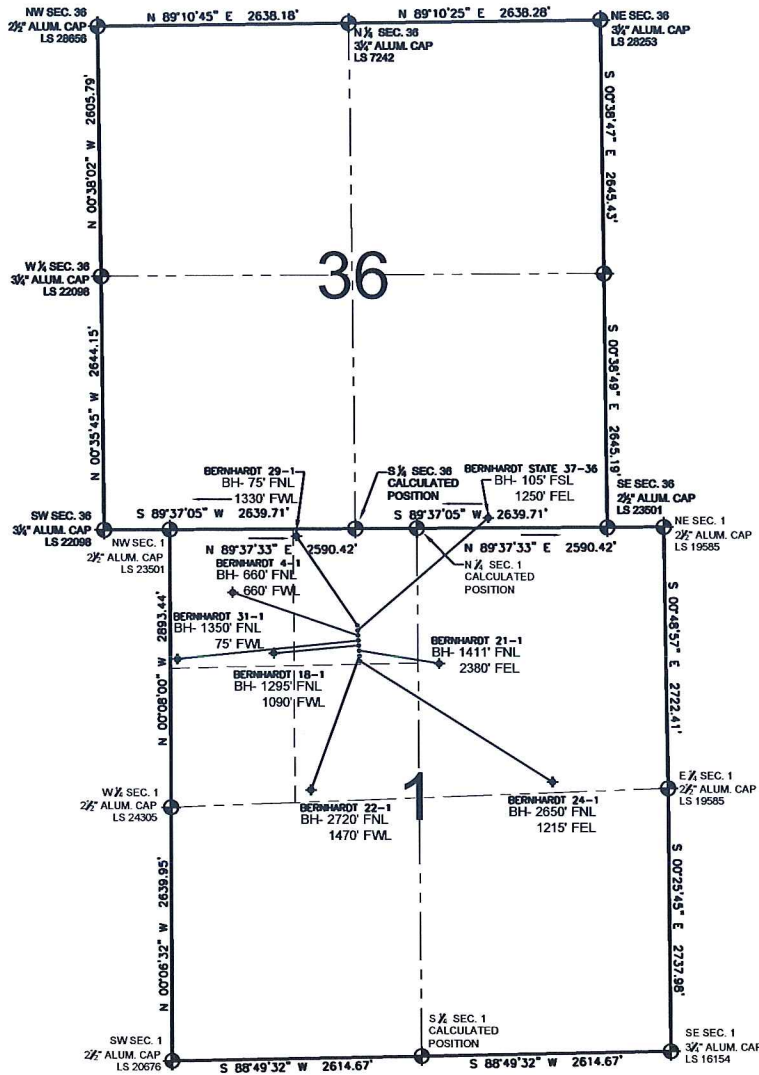


PAD DRAWING - BERNHARDT 8 PAD

SECTION 1, TOWNSHIP 4 NORTH, RANGE 67 WEST, 6TH P.M.



LEGEND

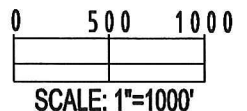
- = EXISTING MONUMENT
 = BOTTOM HOLE
 BH= BOTTOM HOLE
 = PROPOSED WELL
 = EXISTING WELL


NOTES:

- THIS SURVEY WAS DONE BY GPS METHODS AND CONFORMS TO THE MINIMUM STANDARDS SET BY THE C.O.G.C.C., RULE NO. 215
- ELEVATIONS SHOWN AT THE WELL HEAD, AS WELL AS HORIZONTAL CONTROL, ARE BASED ON GPS-RTK VALUES DERIVED FROM DOING 2-HOUR STATIC GPS SESSIONS AND REDUCTIONS USING O.P.U.S. SOLUTIONS.
VERTICAL = NAVD88; HORIZONTAL = NAD83/92
- THE BEARINGS SHOWN HEREON ARE BASED ON GPS OBSERVATIONS BETWEEN THE MONUMENTS SHOWN HEREON AS FOUND ON THE FIELD DATE BELOW.
- DISTANCES SHOWN ARE AT GROUND LEVEL, AS MEASURED IN THE FIELD, WITH TIES TO WELLS MEASURED AT A PERPENDICULAR TO SECTION LINES.

NOTES:

- BERNHARDT 29-1 TO BE AT 1287' FNL, 1985' FWL.
 BOTTOM HOLE AT 75' FNL & 1330' FWL.
 BERNHARDT STATE 37-36 TO BE AT 1303' FNL, 1985' FWL.
 BOTTOM HOLE AT 105' FSL & 1250' FEL.
 BERNHARDT 4-1 TO BE AT 1319' FNL, 1987' FWL.
 BOTTOM HOLE AT 660' FNL & 660' FWL.
 BERNHARDT 31-1 TO BE AT 1335' FNL, 1988' FWL.
 BOTTOM HOLE AT 1350' FNL & 75' FWL.
 BERNHARDT 18-1 TO BE AT 1351' FNL, 1989' FWL.
 BOTTOM HOLE AT 1295' FNL & 1090' FWL.
 BERNHARDT 21-1 TO BE AT 1367' FNL, 1990' FWL.
 BOTTOM HOLE AT 1411' FNL & 2380' FEL.
 BERNHARDT 22-1 TO BE AT 1383' FNL, 1991' FWL.
 BOTTOM HOLE AT 2720' FNL & 1470' FWL.
 BERNHARDT 24-1 TO BE AT 1399' FNL, 1991' FWL.
 BOTTOM HOLE AT 2650' FNL & 1215' FEL.



REVISIONS		PREPARED BY:	 Petroleum Field Services, LLC 1801 W. 13th Ave. Denver, CO 80204
INITIAL	DATE		
SMF	09-22-09	KERR-MCGEE OIL & GAS ONSHORE LP	FIELD DATE: 08-26-09 PAD NAME: BERNHARDT 8 PAD DRAWING DATE: 09-02-09 SURFACE LOCATION: WELD COUNTY, COLORADO NE 1/4 NW 1/4, SEC. 1, T4N, R67W
SMF	01-05-10		

KERR-MCGEE OIL & GAS ONSHORE LP

FIELD DATE:
08-26-09

DRAWING DATE:
09-02-09

BY:
SMF

PAD NAME:
BERNHARDT 8 PAD

SURFACE LOCATION:

WELD COUNTY, COLORADO
NE 1/4 NW 1/4, SEC. 1, T4N, R67W