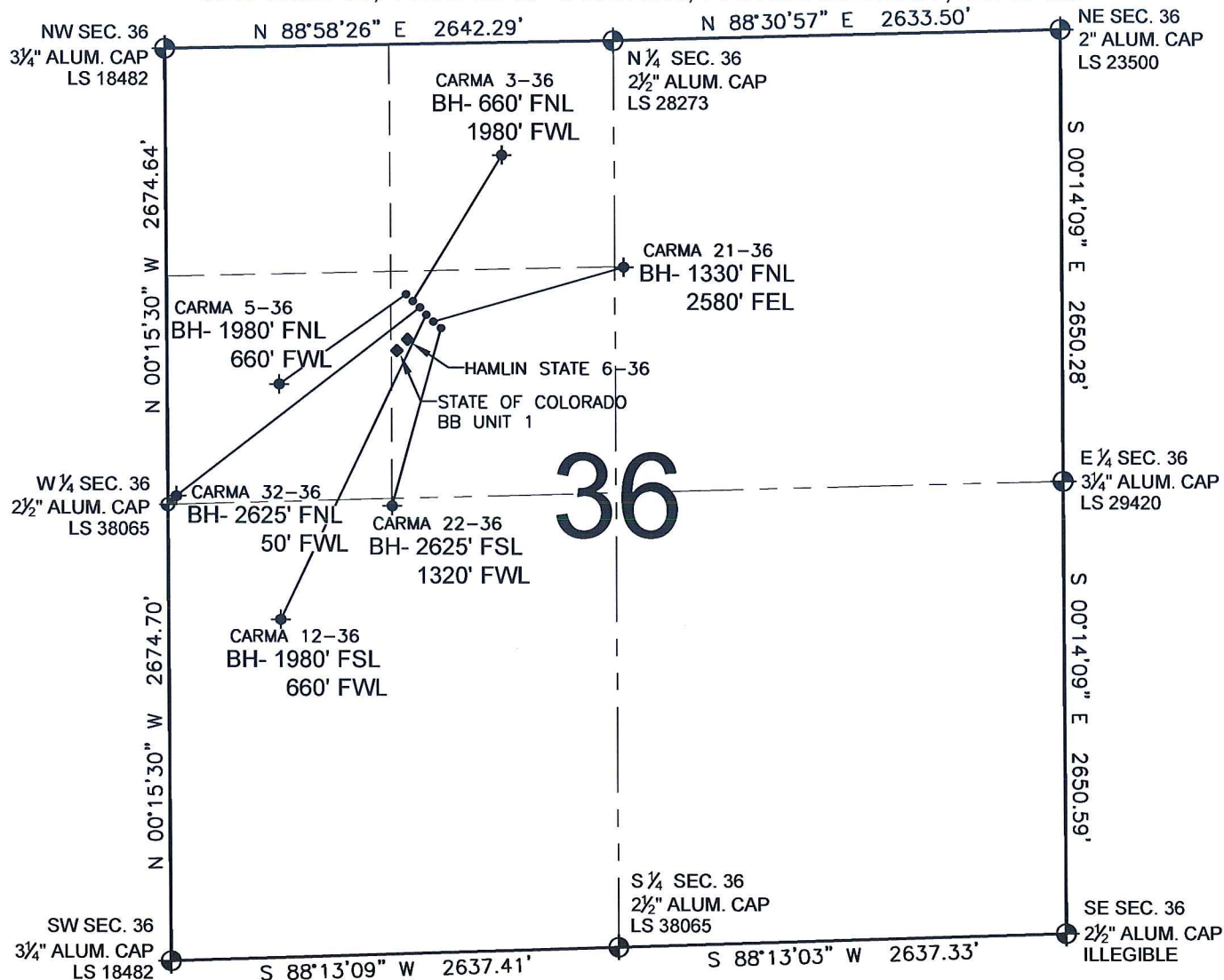


PAD DRAWING - CARMA 6 PAD

SECTION 36, TOWNSHIP 3 NORTH, RANGE 68 WEST, 6TH P.M.



LEGEND

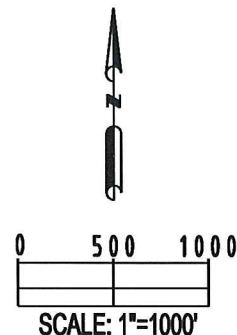
- ⊕ = EXISTING MONUMENT ⊕ = BOTTOM HOLE BH= BOTTOM HOLE
 ● = PROPOSED WELL ◆ = EXISTING WELL


NOTES:

- THIS SURVEY WAS DONE BY GPS METHODS AND CONFORMS TO THE MINIMUM STANDARDS SET BY THE C.O.G.C.C., RULE NO. 215
- ELEVATIONS SHOWN AT THE WELL HEAD, AS WELL AS HORIZONTAL CONTROL, ARE BASED ON GPS-RTK VALUES DERIVED FROM DOING 2-HOUR STATIC GPS SESSIONS AND REDUCTIONS USING O.P.U.S. SOLUTIONS.
VERTICAL = NAVD88; HORIZONTAL = NAD83/92
- THE BEARINGS SHOWN HEREON ARE BASED ON GPS OBSERVATIONS BETWEEN THE MONUMENTS SHOWN HEREON AS FOUND ON THE FIELD DATE BELOW.
- DISTANCES SHOWN ARE AT GROUND LEVEL, AS MEASURED IN THE FIELD, WITH TIES TO WELLS MEASURED AT A PERPENDICULAR TO SECTION LINES.

NOTES:

CARMA 5-36 TO BE AT 1467' FNL, 1411' FWL.
 BOTTOM HOLE AT 1980' FNL & 660' FWL.
 CARMA 3-36 TO BE AT 1478' FNL, 1422' FWL.
 BOTTOM HOLE AT 660' FNL & 1980' FWL.
 CARMA 32-36 TO BE AT 1488' FNL, 1432' FWL.
 BOTTOM HOLE AT 2625' FNL & 50' FWL.
 CARMA 12-36 TO BE AT 1499' FNL, 1443' FWL.
 BOTTOM HOLE AT 1980' FSL & 660' FWL.
 CARMA 21-36 TO BE AT 1509' FNL, 1454' FWL.
 BOTTOM HOLE AT 1330' FNL & 2580' FEL.
 CARMA 22-36 TO BE AT 1520' FNL, 1465' FWL.
 BOTTOM HOLE AT 2625' FSL & 1320' FWL.
 HAMLIN STATE 6-36 IS 1543' FNL & 1420' FWL
 STATE OF COLORADO BB UNIT 1 IS 1593' FNL & 1370' FWL



REVISIONS		PREPARED BY:
INITIAL	DATE	
		

KERR-MCGEE OIL & GAS ONSHORE LP

FIELD DATE: 11-18-09	PAD NAME: CARMA 6 PAD
DRAWING DATE: 11-20-09	SURFACE LOCATION:
BY: SMF	WELD COUNTY, COLORADO SE 1/4 NW 1/4, SEC. 36, T3N, R68W