

Steil Surveying Services, LLC

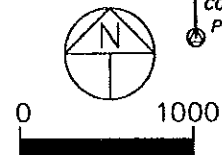
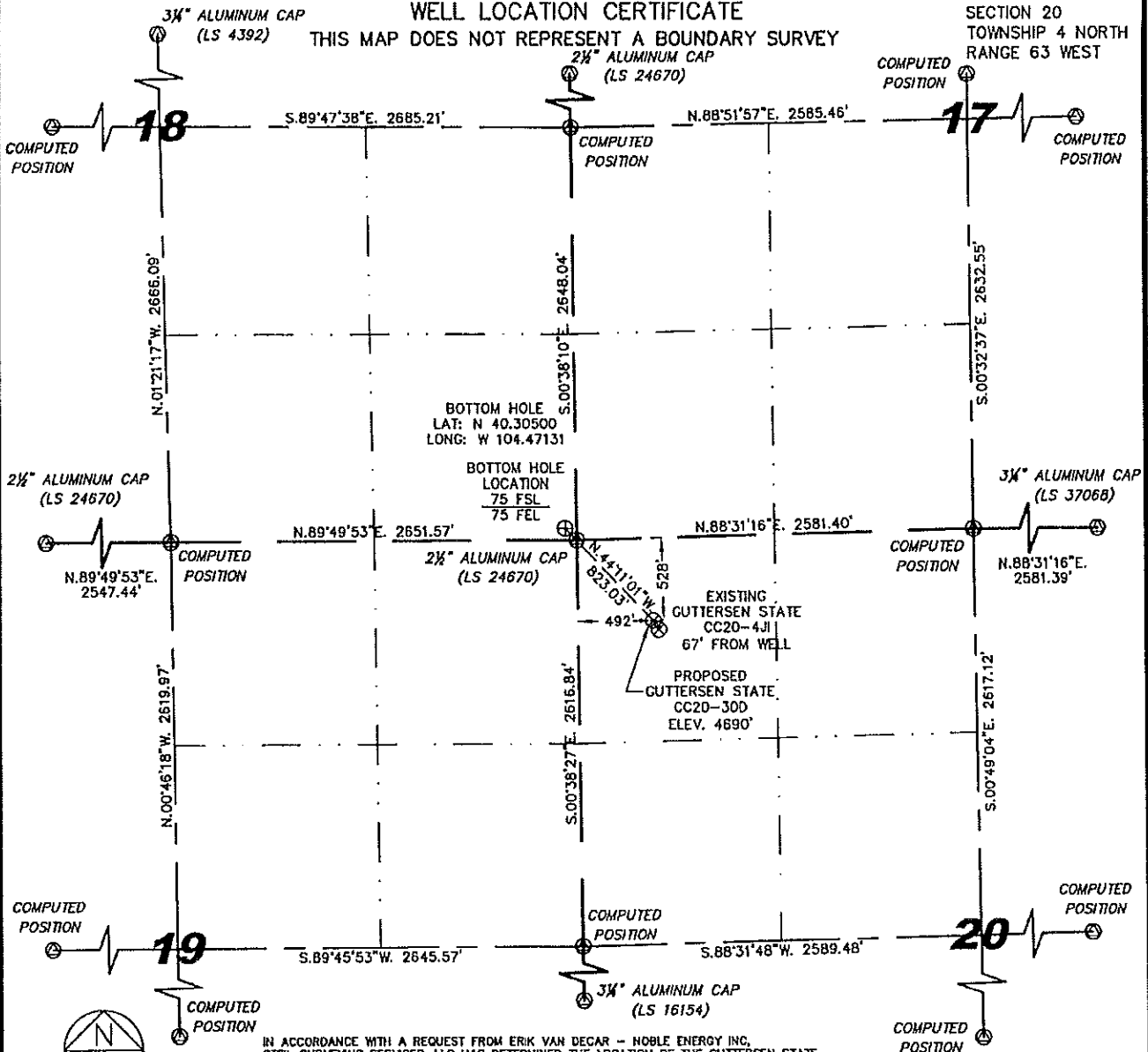
1102 West 19th Street P.O. BOX 2073

Cheyenne, Wyoming 82009

WELL LOCATION CERTIFICATE

THIS MAP DOES NOT REPRESENT A BOUNDARY SURVEY

SECTION 20
TOWNSHIP 4 NORTH
RANGE 63 WEST



Scale: 1" = 1000'

IN ACCORDANCE WITH A REQUEST FROM ERIK VAN DEGAR - NOBLE ENERGY INC, STEIL SURVEYING SERVICES, LLC HAS DETERMINED THE LOCATION OF THE GUTTERSEN STATE CC20-300 WELL TO BE 528' FNL, 492' FWL, AS MEASURED AT NINETY (90) DEGREES FROM THE SECTION LINES, SECTION 20, TOWNSHIP 4 NORTH, RANGE 63 WEST, 6TH PRINCIPLE MERIDIAN, WELD COUNTY, COLORADO.

I HEREBY CERTIFY THAT THIS WELL LOCATION CERTIFICATE WAS PREPARED BY ME, OR UNDER MY DIRECT SUPERVISION, THAT THE FIELD WORK WAS COMPLETED ON 09/08/2009, FOR AND ON BEHALF OF NOBLE ENERGY INC, THAT IT IS NOT A LAND SURVEY PLAT OR AN IMPROVEMENT SURVEY PLAT, AND THAT IT IS NOT TO BE RELIED UPON FOR ESTABLISHMENT OF FENCE, BUILDING, OR OTHER FUTURE IMPROVEMENT LINES.

NOTES:

- 1) BASIS OF BEARINGS FOR THIS MAP ARE BASED UPON GPS OBSERVATIONS MADE ON 06/18/2009 BETWEEN MONUMENTS LOCATED AT THE NORTHWEST SECTION CORNER AND THE NORTHEAST SECTION CORNER OF SAID SECTION AND WITH ALL BEARINGS SHOWN HEREON RELATIVE THERETO.
- 2) ELEVATIONS ARE BASED UPON NGS OPUS SOLUTION NAVD 88 DATUM.
- 3) THE NEAREST EXISTING WELL IS: GUTTERSEN STATE CC20-4J, 67' SOUTHEAST.
- 4) SEE VISIBLE IMPROVEMENTS EXHIBIT FOR ALL IMPROVEMENTS WITHIN 400'.
- 5) THE LOCATION FALLS IN PASTURE LAND.

LATITUDE & LONGITUDE (NAD 83 SURFACE HOLE):

LATITUDE: N 40.30336'
LONGITUDE: W 104.46928'
PDOP: 1.8
QUARTER-QUARTER: NW/4NW/4
NEAREST PROPERTY LINE: 492' TO THE WEST

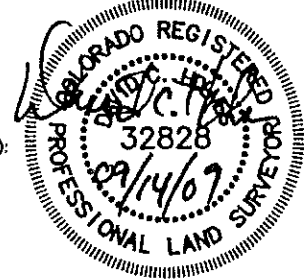
LEGEND

- ⊙ FOUND SURVEY MONUMENT PER MONUMENT RECORD - EXCEPTIONS NOTED.
- (C) CALCULATED DIMENSION

David C. Holmes
Professional Land Surveyor Registration No. 32828
State of Colorado

JOB #: 09086

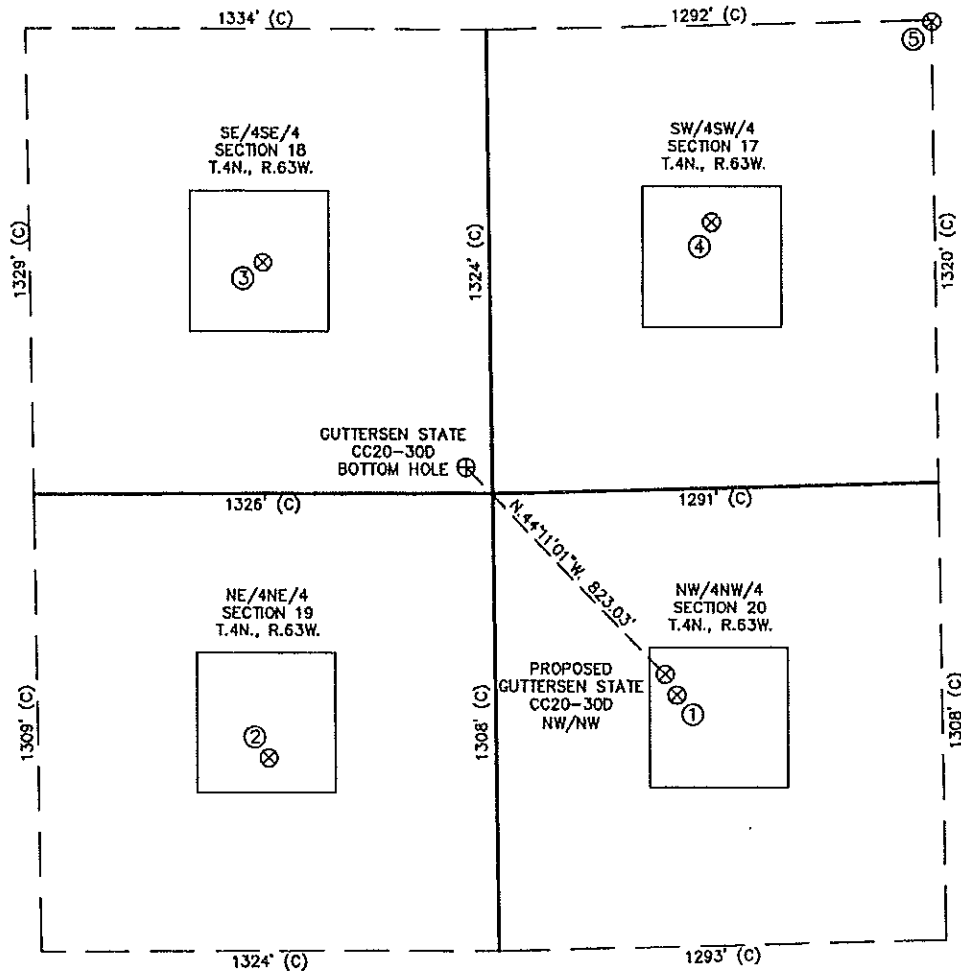
Completed 09/10/2009



NOTICE: According to Colorado law you MUST commence any legal action based upon any defect in this W.L.C. within three years after you first discover such defect. In no event may any action based upon any defect in this W.L.C. be commenced more than ten years from the date of the certification shown hereon.

SITE SKETCH - GUTTERSEN STATE CC20-30D

SECTION 20
TOWNSHIP 4 NORTH
RANGE 63 WEST



①	②	③	④	⑤
GUTTERSEN STATE CC20-4J NW/NW SEC. 20 587' FNL 525' FWL EL 4691' N 40.30320 W 104.46916 PDOP 2.0	SATER USX CC19-1 NE/NE SEC. 19 757' FNL 656' FEL EL 4681' N 40.30273 W 104.47340 PDOP 2.5	WATKINS 18-4 SE/SE SEC. 18 659' FSL 654' FEL EL 4670' N 40.30661 W 104.47339 PDOP 2.1	GUTTERSEN USX CC17-13 SW/SW SEC. 17 760' FSL 645' FWL EL 4705' N 40.30690 W 104.46873 PDOP 2.4	GUTTERSEN USX CC17-25 SW/SW SEC. 17 1316' FSL 1292' FWL EL 4706' N 40.30845 W 104.46641 PDOP 2.3

- NOTES:
1) THIS SKETCH DOES NOT REPRESENT A BOUNDARY SURVEY.
2) THE DATUM FOR THE LATITUDES AND LONGITUDES ON THIS SKETCH IS NAD83.

