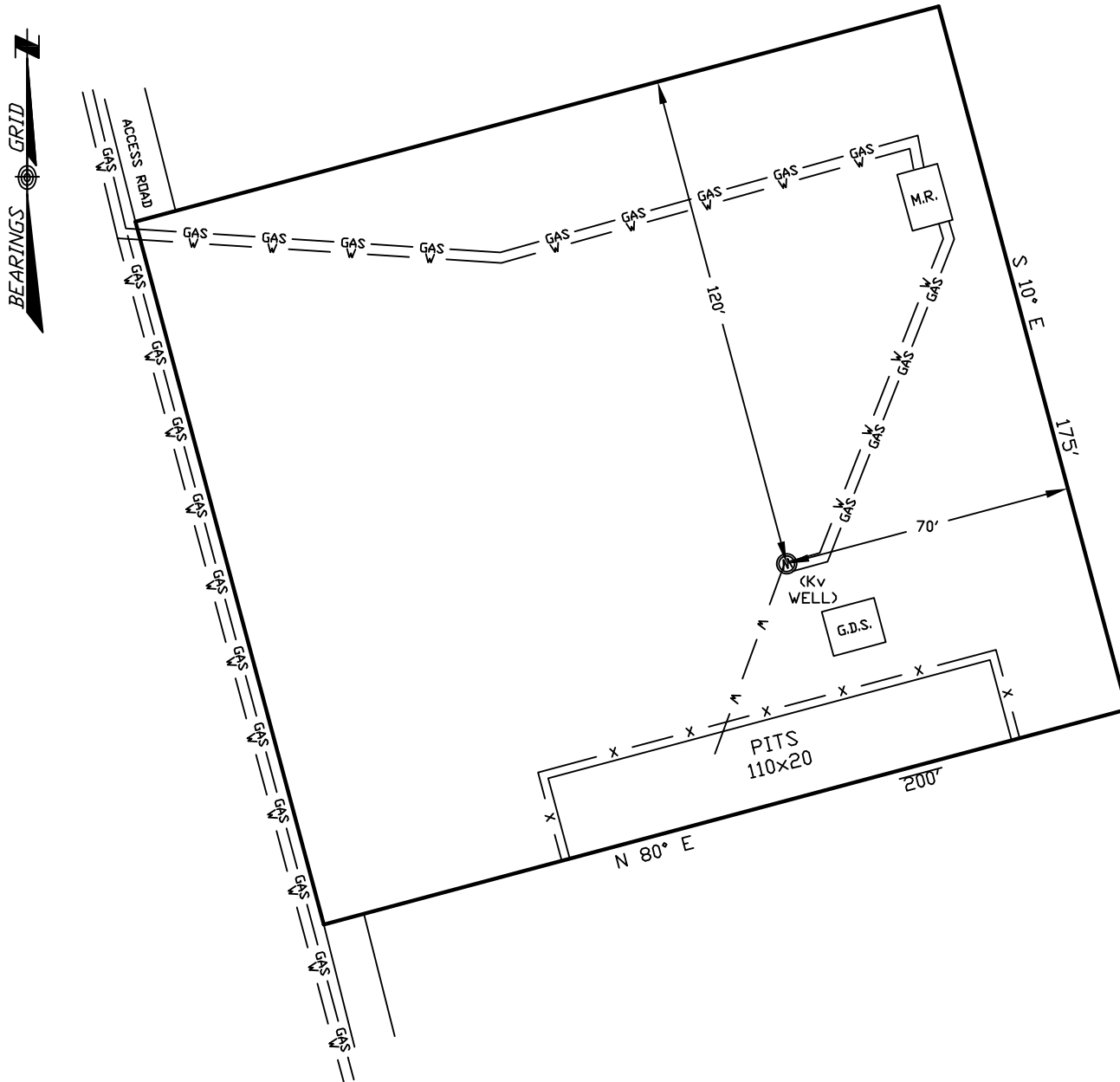


# WELLSITE/PRODUCTION EQUIPMENT LAYOUT

OPERATOR: Pioneer Natural Resources

WELL NAME: Bilbo Federal 11-24

NWNW of SECTION 24 TOWNSHIP 32 S, RANGE 66 W OF THE 6TH P.M., IN LAS ANIMAS COUNTY



## NOTE:

MUD AND BLOW PITS WILL BE CONVERTED TO UNLINED EVAPORATION PITS FOR PRODUCTION.

WELLHEADS ARE TYPICALLY PCP DRIVE HEADS

January 20, 2010 (Revised Sheet)

Date Platted

## GRAPHIC SCALE



( IN FEET )

1 inch = 40 ft.

## LEGEND:

- ⊙ = WELLHEAD
- = EXISTING WELLPAD
- x — = FENCE (4 STRAND)
- GAS — = 4" GAS GATHERING LINE
- W — = 2" WATER LINE
- M.R. = COMBO METER RUN AND WATER/GAS SEPARATOR
- G.D.S. = GAS DRIVE SYSTEM

SHIELDS SURVEY L<sup>td</sup>. C<sup>o</sup>.  
Raton, New Mexico 87740  
(575)445-1232