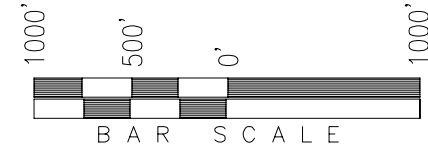
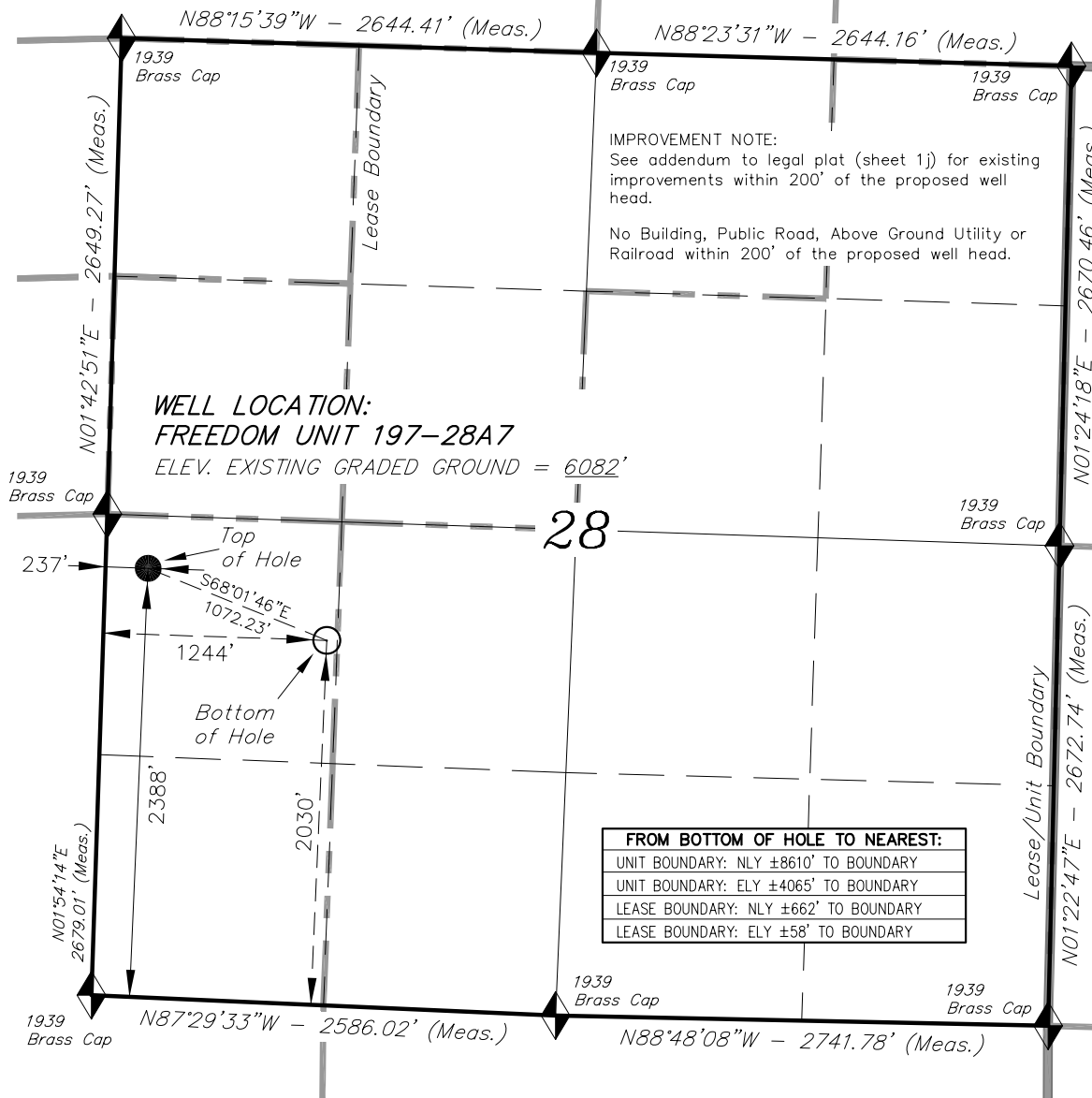


T1S, R97W, 6th P.M.

EXXON MOBIL CORPORATION

WELL LOCATION, FREEDOM UNIT 197-28A7,
LOCATED AS SHOWN IN THE NW 1/4 SW 1/4
OF SECTION 28, T1S, R97W, 6th P.M. RIO
BLANCO COUNTY, COLORADO.



◆ = SECTION CORNERS LOCATED

BASIS OF BEARINGS & BASIS OF ELEVATION

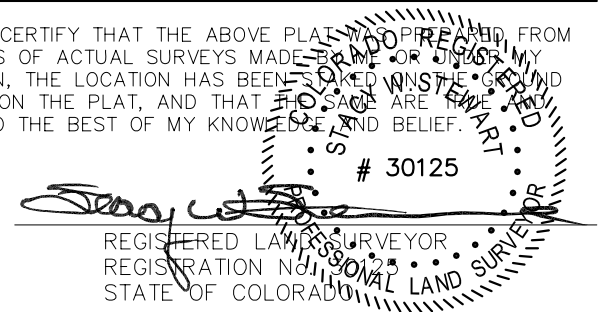
BASIS OF BEARINGS IS A LINE BETWEEN MAGNOLIA & MEYERS TRIANGULATION STATION GRID COORDINATES WHICH IS ASSUMED TO BEAR S82°36'07"E.

BASIS OF ELEVATIONS IS MAGNOLIA TRIANGULATION STATION LOCATED IN THE NW 1/4 OF SECTION 9, T2S, R96W, 6th P.M. REPORTED FROM THE NATIONAL GEODETIC SURVEY AS BEING 7529 FEET (NAVD 88). WE MEASURED IT TO BE 7526.2'

NOTES:

1. Well footages are measured at right angles to the Section Lines.
2. Bearings are based on Global Positioning Satellite observations.
3. G.P.S. Operator: D. PETTY, (PDOP) = 3.1

THIS IS TO CERTIFY THAT THE ABOVE PLAT WAS PREPARED FROM FIELD NOTES OF ACTUAL SURVEYS MADE BY ME OR UNDER MY SUPERVISION, THE LOCATION HAS BEEN LOCATED ON THE GROUND AS SHOWN ON THE PLAT, AND THAT THE SAME ARE TRUE AND CORRECT TO THE BEST OF MY KNOWLEDGE AND BELIEF.



CO-NORTH NAD 83 (SURFACE LOCATION)		CO-NORTH NAD 83 (BOTTOM HOLE)		FROM SURFACE LOCATION TO NEAREST:	
LATITUDE = 39°56'04.31" (39.934530)		LATITUDE = 39°56'00.66" (39.933516)		TOWN/COMMUNITY: 21.5 MILES NE TO MEEKER	
LONGITUDE = 108°17'45.19" (108.295886)		LONGITUDE = 108°17'32.28" (108.292300)		UNIT BOUNDARY: ±8238' NLY TO BOUNDARY	
STATE PLANE COORDINATES		STATE PLANE COORDINATES		UNIT BOUNDARY: ±5070' ELY TO BOUNDARY	
N: = 1231357.061	E: = 2216100.567	N: = 1230956.217	E: = 2217093.994	LEASE BOUNDARY: ±309' NLY TO BOUNDARY	
CO-NORTH NAD 27 (SURFACE LOCATION)		CO-NORTH NAD 27 (BOTTOM HOLE)		LEASE BOUNDARY: ±1069' ELY TO BOUNDARY	
LATITUDE = 39°56'04.41" (39.934558)		LATITUDE = 39°56'00.76" (39.933544)		EXISTING WELL: ±624' SELY TO P-1 MARATHON-FEE	
LONGITUDE = 108°17'42.87" (108.295242)		LONGITUDE = 108°17'29.96" (108.291657)			
STATE PLANE COORDINATES		STATE PLANE COORDINATES			
N: = 231357.831	E: = 1216260.583	N: = 230957.000	E: = 1217254.000		

TRI STATE LAND SURVEYING & CONSULTING

180 NORTH VERNAL AVE. - VERNAL, UTAH 84078
(435) 781-2501

DATE SURVEYED: 02-20-09	SURVEYED BY: D.P.	SHEET 2g OF 8
DATE DRAWN: 10-08-09	DRAWN BY: F.T.M.	
REVISED:	SCALE: 1" = 1000'	