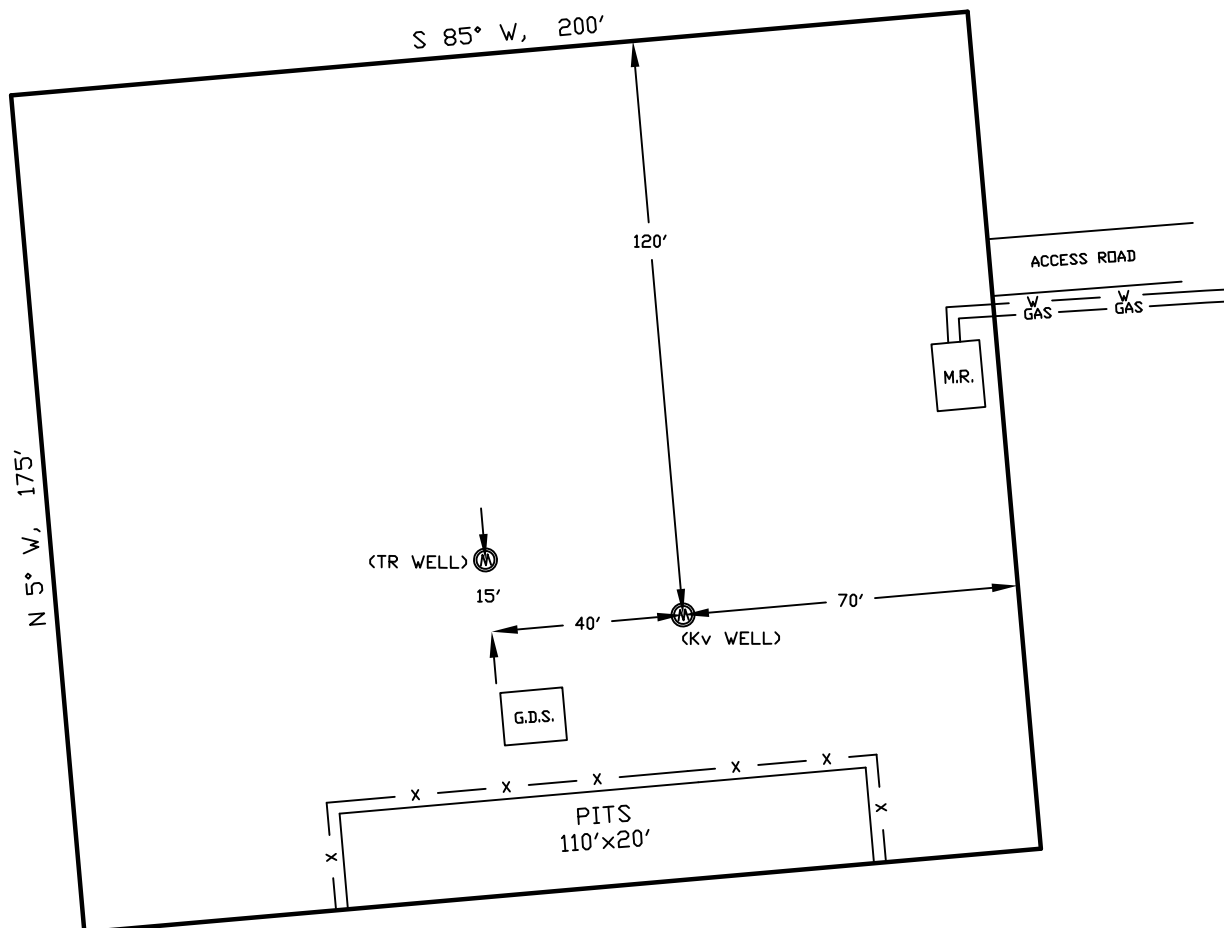


WELLSITE/PRODUCTION EQUIPMENT LAYOUT

OPERATOR: Pioneer Natural Resources

WELL NAME: Alibi 23-2

NESW of SECTION 2 TOWNSHIP 33 S, RANGE 68 W OF THE 6TH P.M., IN LAS ANIMAS COUNTY


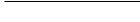
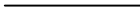




NOTE:

MUD AND BLOW PITS WILL BE CONVERTED TO LINED EVAPORATION PITS FOR PRODUCTION.

WELLHEADS ARE TYPICALLY PCP DRIVE HEADS

LEGEND:

-  = WELLHEAD
-  = EXISTING WELLPAD
-  = FENCE (4 STRAND)
-  = 4" GAS GATHERING LINE
-  = 2" WATER LINE
- M.R. = COMBO METER RUN AND WATER/GAS SEPARATOR
- G.D.S. = GAS DRIVE SYSTEM

GRAPHIC SCALE



(IN FEET)

1 inch = 40 ft.

January 18, 2010

Date Platted

SHIELDS SURVEY L^{td}. C^o.
Raton, New Mexico 87740
(575)445-1232