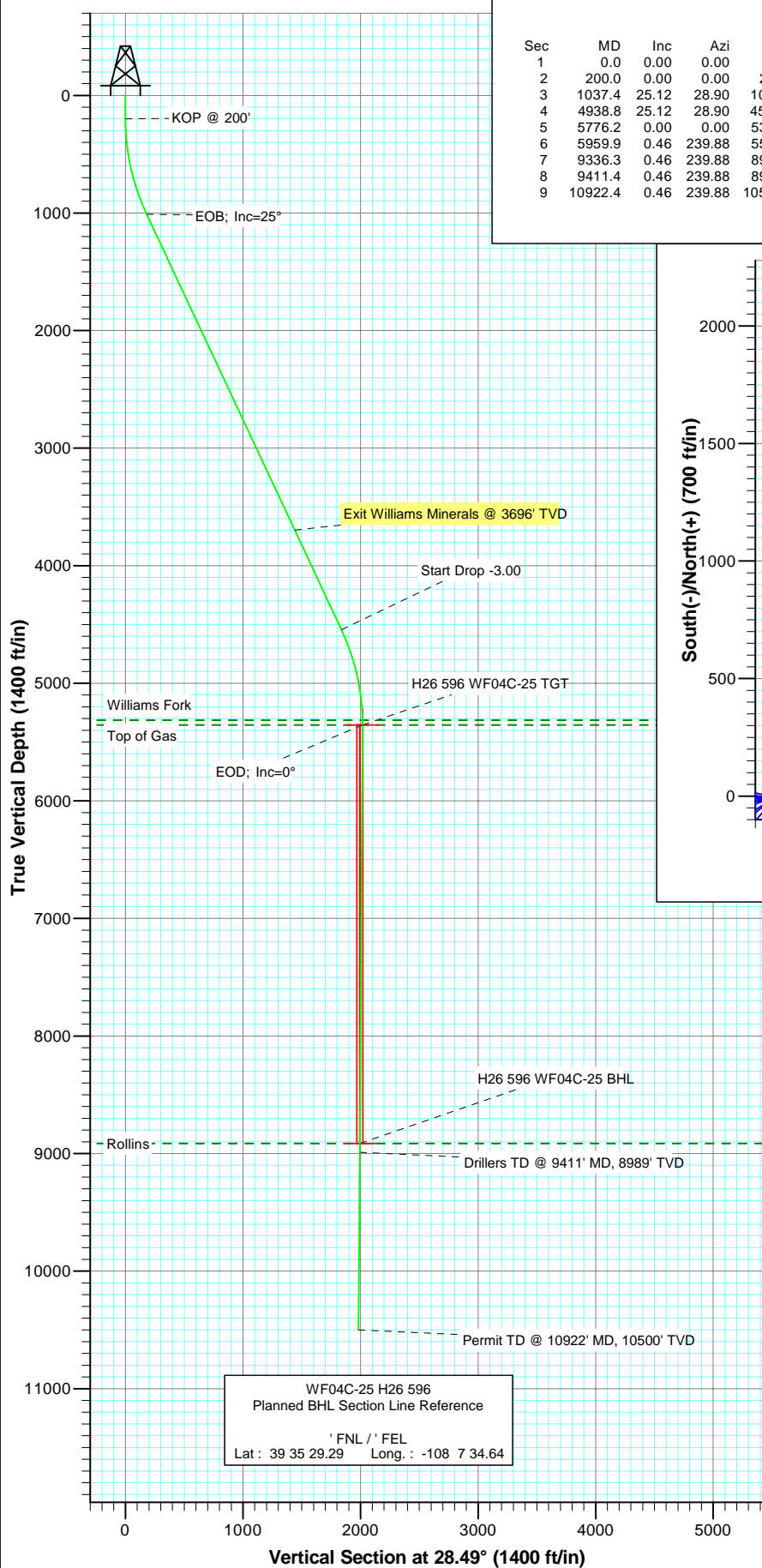
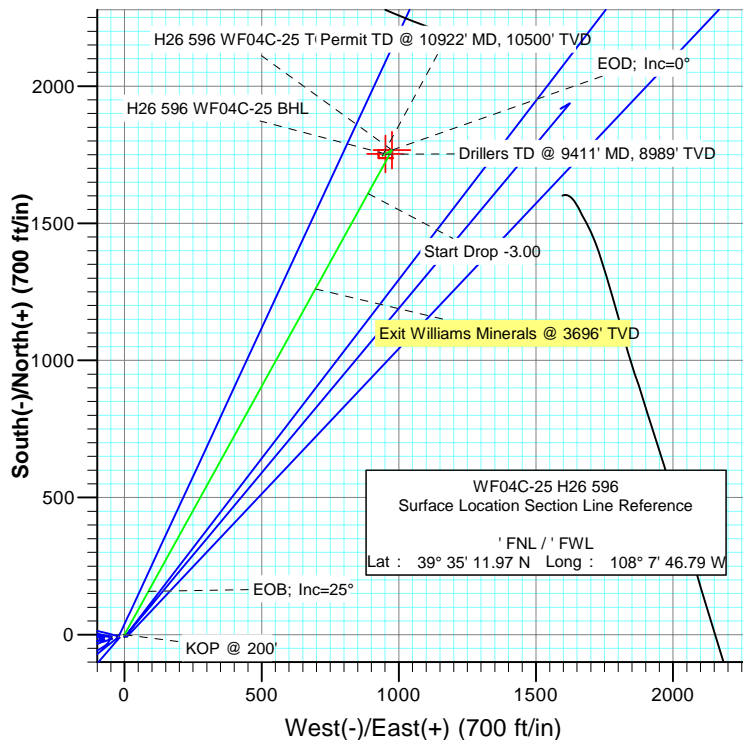




Project: North Piceance  
Site: H26 596  
Well: WF04C-25 H26 596  
Wellbore: DD  
Plan: Plan #2



SECTION DETAILS										
Sec	MD	Inc	Azi	TVD	+N/-S	+E/-W	DLeg	TFace	VSec	Target
1	0.0	0.00	0.00	0.0	0.0	0.0	0.00	0.00	0.0	
2	200.0	0.00	0.00	200.0	0.0	0.0	0.00	0.00	0.0	
3	1037.4	25.12	28.90	1010.9	158.2	87.3	3.00	28.90	180.7	
4	4938.8	25.12	28.90	4543.1	1608.3	887.9	0.00	0.00	1837.0	
5	5776.2	0.00	0.00	5354.0	1766.4	975.2	3.00	180.00	2017.7	H26 596 WF04C-25 TGT
6	5959.9	0.46	239.88	5537.7	1766.1	974.5	0.25	239.88	2017.1	
7	9336.3	0.46	239.88	8914.0	1752.5	951.1	0.00	0.00	1994.0	H26 596 WF04C-25 BHL
8	9411.4	0.46	239.88	8989.0	1752.2	950.6	0.00	0.00	1993.4	
9	10922.4	0.46	239.88	10500.0	1746.1	940.1	0.00	0.00	1983.1	



FORMATION TOP DETAILS		
TVDPath	MDPath	Formation
5314.0	5736.2	Williams Fork
5354.0	5776.2	Top of Gas
8914.0	9336.3	Rollins



Azimuths to True North  
Magnetic North: 10.73°  
Magnetic Field  
Strength: 52564.1snT  
Dip Angle: 65.87°  
Date: 11/20/2008  
Model: IGRF200510

DESIGN DETAILS: Plan #2

Job# 85xxx; LR  
WELL @ 6114.0ft (Original Well Elev)

Target	Azimuth	Origin Type	N/S	E/W	From TVD
H26 596 WF04C-25 BHL	28.49	Slot	0.0	0.0	0.0

## Planning Report

<b>Database:</b>	EDM 2003.21 US Multi User Db	<b>Local Co-ordinate Reference:</b>	Well WF04C-25 H26 596
<b>Company:</b>	EnCana Oil & Gas (USA) Inc	<b>TVD Reference:</b>	WELL @ 6114.0ft (Original Well Elev)
<b>Project:</b>	North Piceance	<b>MD Reference:</b>	WELL @ 6114.0ft (Original Well Elev)
<b>Site:</b>	H26 596	<b>North Reference:</b>	True
<b>Well:</b>	WF04C-25 H26 596	<b>Survey Calculation Method:</b>	Minimum Curvature
<b>Wellbore:</b>	DD		
<b>Design:</b>	Plan #2		

<b>Project</b>	North Piceance		
<b>Map System:</b>	US State Plane 1983	<b>System Datum:</b>	Mean Sea Level
<b>Geo Datum:</b>	North American Datum 1983		
<b>Map Zone:</b>	Colorado Central Zone		

<b>Site</b>	H26 596			
<b>Site Position:</b>		<b>Northing:</b>	1,649,294.53 ft	<b>Latitude:</b> 39° 35' 11.93 N
<b>From:</b>	Lat/Long	<b>Easting:</b>	2,258,943.98 ft	<b>Longitude:</b> 108° 7' 47.14 W
<b>Position Uncertainty:</b>	0.0 ft	<b>Slot Radius:</b>	in	<b>Grid Convergence:</b> -1.66 °

<b>Well</b>	WF04C-25 H26 596			
<b>Well Position</b>	<b>+N/-S</b>	0.0 ft	<b>Northing:</b>	1,649,297.77 ft
	<b>+E/-W</b>	0.0 ft	<b>Easting:</b>	2,258,971.48 ft
<b>Position Uncertainty</b>		0.0 ft	<b>Wellhead Elevation:</b>	ft
			<b>Ground Level:</b>	6,092.0 ft

<b>Wellbore</b>	DD				
<b>Magnetics</b>	<b>Model Name</b>	<b>Sample Date</b>	<b>Declination (°)</b>	<b>Dip Angle (°)</b>	<b>Field Strength (nT)</b>
	IGRF200510	11/20/2008	10.74	65.87	52,564

<b>Design</b>	Plan #2			
<b>Audit Notes:</b>				
<b>Version:</b>	<b>Phase:</b>	PLAN	<b>Tie On Depth:</b>	0.0
<b>Vertical Section:</b>	<b>Depth From (TVD) (ft)</b>	<b>+N/-S (ft)</b>	<b>+E/-W (ft)</b>	<b>Direction (°)</b>
	0.0	0.0	0.0	28.49

<b>Plan Sections</b>										
Measured Depth (ft)	Inclination (°)	Azimuth (°)	Vertical Depth (ft)	+N/-S (ft)	+E/-W (ft)	Dogleg Rate (°/100ft)	Build Rate (°/100ft)	Turn Rate (°/100ft)	TFO (°)	Target
0.0	0.00	0.00	0.0	0.0	0.0	0.00	0.00	0.00	0.00	
200.0	0.00	0.00	200.0	0.0	0.0	0.00	0.00	0.00	0.00	
1,037.4	25.12	28.90	1,010.9	158.2	87.3	3.00	3.00	0.00	28.90	
4,938.8	25.12	28.90	4,543.1	1,608.3	887.9	0.00	0.00	0.00	0.00	
5,776.2	0.00	0.00	5,354.0	1,766.4	975.2	3.00	-3.00	0.00	180.00	H26 596 WF04C-25 T
5,959.9	0.46	239.88	5,537.7	1,766.1	974.5	0.25	0.25	-65.40	239.88	
9,336.3	0.46	239.88	8,914.0	1,752.5	951.1	0.00	0.00	0.00	0.00	H26 596 WF04C-25 E
9,411.3	0.46	239.88	8,989.0	1,752.2	950.6	0.00	0.00	0.00	0.00	
10,922.4	0.46	239.88	10,500.0	1,746.1	940.1	0.00	0.00	0.00	0.00	

# Planning Report

<b>Database:</b>	EDM 2003.21 US Multi User Db	<b>Local Co-ordinate Reference:</b>	Well WF04C-25 H26 596
<b>Company:</b>	EnCana Oil & Gas (USA) Inc	<b>TVD Reference:</b>	WELL @ 6114.0ft (Original Well Elev)
<b>Project:</b>	North Piceance	<b>MD Reference:</b>	WELL @ 6114.0ft (Original Well Elev)
<b>Site:</b>	H26 596	<b>North Reference:</b>	True
<b>Well:</b>	WF04C-25 H26 596	<b>Survey Calculation Method:</b>	Minimum Curvature
<b>Wellbore:</b>	DD		
<b>Design:</b>	Plan #2		

## Planned Survey

Measured Depth (ft)	Inclination (°)	Azimuth (°)	Vertical Depth (ft)	+N/-S (ft)	+E/-W (ft)	Vertical Section (ft)	Dogleg Rate (°/100ft)	Build Rate (°/100ft)	Comments / Formations
0.0	0.00	0.00	0.0	0.0	0.0	0.0	0.00	0.00	
30.0	0.00	0.00	30.0	0.0	0.0	0.0	0.00	0.00	
60.0	0.00	0.00	60.0	0.0	0.0	0.0	0.00	0.00	
90.0	0.00	0.00	90.0	0.0	0.0	0.0	0.00	0.00	
120.0	0.00	0.00	120.0	0.0	0.0	0.0	0.00	0.00	
150.0	0.00	0.00	150.0	0.0	0.0	0.0	0.00	0.00	
180.0	0.00	0.00	180.0	0.0	0.0	0.0	0.00	0.00	
200.0	0.00	0.00	200.0	0.0	0.0	0.0	0.00	0.00	KOP @ 200'
210.0	0.30	28.90	210.0	0.0	0.0	0.0	3.00	3.00	
240.0	1.20	28.90	240.0	0.4	0.2	0.4	3.00	3.00	
270.0	2.10	28.90	270.0	1.1	0.6	1.3	3.00	3.00	
300.0	3.00	28.90	300.0	2.3	1.3	2.6	3.00	3.00	
330.0	3.90	28.90	329.9	3.9	2.1	4.4	3.00	3.00	
360.0	4.80	28.90	359.8	5.9	3.2	6.7	3.00	3.00	
390.0	5.70	28.90	389.7	8.3	4.6	9.4	3.00	3.00	
420.0	6.60	28.90	419.5	11.1	6.1	12.7	3.00	3.00	
450.0	7.50	28.90	449.3	14.3	7.9	16.3	3.00	3.00	
480.0	8.40	28.90	479.0	17.9	9.9	20.5	3.00	3.00	
510.0	9.30	28.90	508.6	22.0	12.1	25.1	3.00	3.00	
540.0	10.20	28.90	538.2	26.4	14.6	30.2	3.00	3.00	
570.0	11.10	28.90	567.7	31.3	17.3	35.7	3.00	3.00	
600.0	12.00	28.90	597.1	36.5	20.2	41.7	3.00	3.00	
630.0	12.90	28.90	626.4	42.2	23.3	48.2	3.00	3.00	
660.0	13.80	28.90	655.6	48.3	26.6	55.1	3.00	3.00	
690.0	14.70	28.90	684.6	54.7	30.2	62.5	3.00	3.00	
720.0	15.60	28.90	713.6	61.6	34.0	70.4	3.00	3.00	
750.0	16.50	28.90	742.4	68.9	38.0	78.6	3.00	3.00	
780.0	17.40	28.90	771.1	76.5	42.2	87.4	3.00	3.00	
810.0	18.30	28.90	799.7	84.6	46.7	96.6	3.00	3.00	
840.0	19.20	28.90	828.1	93.0	51.3	106.2	3.00	3.00	
870.0	20.10	28.90	856.3	101.8	56.2	116.3	3.00	3.00	
900.0	21.00	28.90	884.4	111.1	61.3	126.8	3.00	3.00	
930.0	21.90	28.90	912.4	120.7	66.6	137.8	3.00	3.00	
960.0	22.80	28.90	940.1	130.6	72.1	149.2	3.00	3.00	
990.0	23.70	28.90	967.7	141.0	77.8	161.1	3.00	3.00	
1,020.0	24.60	28.90	995.0	151.8	83.8	173.3	3.00	3.00	
1,037.4	25.12	28.90	1,010.9	158.2	87.3	180.7	3.00	3.00	EOB; Inc=25°
1,050.0	25.12	28.90	1,022.2	162.8	89.9	186.0	0.00	0.00	
1,080.0	25.12	28.90	1,049.4	174.0	96.1	198.7	0.00	0.00	
1,110.0	25.12	28.90	1,076.6	185.1	102.2	211.5	0.00	0.00	
1,140.0	25.12	28.90	1,103.7	196.3	108.4	224.2	0.00	0.00	
1,170.0	25.12	28.90	1,130.9	207.4	114.5	237.0	0.00	0.00	
1,200.0	25.12	28.90	1,158.0	218.6	120.7	249.7	0.00	0.00	
1,230.0	25.12	28.90	1,185.2	229.7	126.8	262.4	0.00	0.00	
1,260.0	25.12	28.90	1,212.4	240.9	133.0	275.2	0.00	0.00	
1,290.0	25.12	28.90	1,239.5	252.0	139.1	287.9	0.00	0.00	
1,320.0	25.12	28.90	1,266.7	263.2	145.3	300.6	0.00	0.00	
1,350.0	25.12	28.90	1,293.9	274.3	151.5	313.4	0.00	0.00	
1,380.0	25.12	28.90	1,321.0	285.5	157.6	326.1	0.00	0.00	
1,410.0	25.12	28.90	1,348.2	296.7	163.8	338.8	0.00	0.00	
1,440.0	25.12	28.90	1,375.3	307.8	169.9	351.6	0.00	0.00	
1,470.0	25.12	28.90	1,402.5	319.0	176.1	364.3	0.00	0.00	

## Planning Report

<b>Database:</b>	EDM 2003.21 US Multi User Db	<b>Local Co-ordinate Reference:</b>	Well WF04C-25 H26 596
<b>Company:</b>	EnCana Oil & Gas (USA) Inc	<b>TVD Reference:</b>	WELL @ 6114.0ft (Original Well Elev)
<b>Project:</b>	North Piceance	<b>MD Reference:</b>	WELL @ 6114.0ft (Original Well Elev)
<b>Site:</b>	H26 596	<b>North Reference:</b>	True
<b>Well:</b>	WF04C-25 H26 596	<b>Survey Calculation Method:</b>	Minimum Curvature
<b>Wellbore:</b>	DD		
<b>Design:</b>	Plan #2		

### Planned Survey

Measured Depth (ft)	Inclination (°)	Azimuth (°)	Vertical Depth (ft)	+N/-S (ft)	+E/-W (ft)	Vertical Section (ft)	Dogleg Rate (°/100ft)	Build Rate (°/100ft)	Comments / Formations
1,500.0	25.12	28.90	1,429.7	330.1	182.2	377.1	0.00	0.00	
1,530.0	25.12	28.90	1,456.8	341.3	188.4	389.8	0.00	0.00	
1,560.0	25.12	28.90	1,484.0	352.4	194.5	402.5	0.00	0.00	
1,590.0	25.12	28.90	1,511.1	363.6	200.7	415.3	0.00	0.00	
1,620.0	25.12	28.90	1,538.3	374.7	206.9	428.0	0.00	0.00	
1,650.0	25.12	28.90	1,565.5	385.9	213.0	440.7	0.00	0.00	
1,680.0	25.12	28.90	1,592.6	397.0	219.2	453.5	0.00	0.00	
1,710.0	25.12	28.90	1,619.8	408.2	225.3	466.2	0.00	0.00	
1,740.0	25.12	28.90	1,647.0	419.3	231.5	478.9	0.00	0.00	
1,770.0	25.12	28.90	1,674.1	430.5	237.6	491.7	0.00	0.00	
1,800.0	25.12	28.90	1,701.3	441.6	243.8	504.4	0.00	0.00	
1,830.0	25.12	28.90	1,728.4	452.8	250.0	517.2	0.00	0.00	
1,860.0	25.12	28.90	1,755.6	463.9	256.1	529.9	0.00	0.00	
1,890.0	25.12	28.90	1,782.8	475.1	262.3	542.6	0.00	0.00	
1,920.0	25.12	28.90	1,809.9	486.2	268.4	555.4	0.00	0.00	
1,950.0	25.12	28.90	1,837.1	497.4	274.6	568.1	0.00	0.00	
1,980.0	25.12	28.90	1,864.3	508.5	280.7	580.8	0.00	0.00	
2,010.0	25.12	28.90	1,891.4	519.7	286.9	593.6	0.00	0.00	
2,040.0	25.12	28.90	1,918.6	530.8	293.0	606.3	0.00	0.00	
2,070.0	25.12	28.90	1,945.7	542.0	299.2	619.1	0.00	0.00	
2,100.0	25.12	28.90	1,972.9	553.1	305.4	631.8	0.00	0.00	
2,130.0	25.12	28.90	2,000.1	564.3	311.5	644.5	0.00	0.00	
2,160.0	25.12	28.90	2,027.2	575.4	317.7	657.3	0.00	0.00	
2,190.0	25.12	28.90	2,054.4	586.6	323.8	670.0	0.00	0.00	
2,220.0	25.12	28.90	2,081.5	597.7	330.0	682.7	0.00	0.00	
2,250.0	25.12	28.90	2,108.7	608.9	336.1	695.5	0.00	0.00	
2,280.0	25.12	28.90	2,135.9	620.0	342.3	708.2	0.00	0.00	
2,310.0	25.12	28.90	2,163.0	631.2	348.4	720.9	0.00	0.00	
2,340.0	25.12	28.90	2,190.2	642.3	354.6	733.7	0.00	0.00	
2,370.0	25.12	28.90	2,217.4	653.5	360.8	746.4	0.00	0.00	
2,400.0	25.12	28.90	2,244.5	664.6	366.9	759.2	0.00	0.00	
2,430.0	25.12	28.90	2,271.7	675.8	373.1	771.9	0.00	0.00	
2,460.0	25.12	28.90	2,298.8	686.9	379.2	784.6	0.00	0.00	
2,490.0	25.12	28.90	2,326.0	698.1	385.4	797.4	0.00	0.00	

# Planning Report

<b>Database:</b>	EDM 2003.21 US Multi User DB	<b>Local Co-ordinate Reference:</b>	Well WF04C-25 H26 596
<b>Company:</b>	EnCana Oil & Gas (USA) Inc	<b>TVD Reference:</b>	WELL @ 6114.0ft (Original Well Elev)
<b>Project:</b>	North Piceance	<b>MD Reference:</b>	WELL @ 6114.0ft (Original Well Elev)
<b>Site:</b>	H26 596	<b>North Reference:</b>	True
<b>Well:</b>	WF04C-25 H26 596	<b>Survey Calculation Method:</b>	Minimum Curvature
<b>Wellbore:</b>	DD		
<b>Design:</b>	Plan #2		

## Planned Survey

Measured Depth (ft)	Inclination (°)	Azimuth (°)	Vertical Depth (ft)	+N/-S (ft)	+E/-W (ft)	Vertical Section (ft)	Dogleg Rate (°/100ft)	Build Rate (°/100ft)	Comments / Formations
2,500.0	25.12	28.90	2,335.1	701.8	387.4	801.6	0.00	0.00	
2,600.0	25.12	28.90	2,425.6	739.0	408.0	844.1	0.00	0.00	
2,700.0	25.12	28.90	2,516.1	776.1	428.5	886.5	0.00	0.00	
2,800.0	25.12	28.90	2,606.7	813.3	449.0	929.0	0.00	0.00	
2,900.0	25.12	28.90	2,697.2	850.5	469.5	971.4	0.00	0.00	
3,000.0	25.12	28.90	2,787.8	887.6	490.0	1,013.9	0.00	0.00	
3,100.0	25.12	28.90	2,878.3	924.8	510.5	1,056.3	0.00	0.00	
3,200.0	25.12	28.90	2,968.8	962.0	531.1	1,098.8	0.00	0.00	
3,300.0	25.12	28.90	3,059.4	999.1	551.6	1,141.3	0.00	0.00	
3,400.0	25.12	28.90	3,149.9	1,036.3	572.1	1,183.7	0.00	0.00	
3,500.0	25.12	28.90	3,240.5	1,073.5	592.6	1,226.2	0.00	0.00	
3,600.0	25.12	28.90	3,331.0	1,110.6	613.1	1,268.6	0.00	0.00	
3,700.0	25.12	28.90	3,421.5	1,147.8	633.7	1,311.1	0.00	0.00	
3,800.0	25.12	28.90	3,512.1	1,185.0	654.2	1,353.5	0.00	0.00	
3,900.0	25.12	28.90	3,602.6	1,222.2	674.7	1,396.0	0.00	0.00	
4,000.0	25.12	28.90	3,693.2	1,259.3	695.2	1,438.4	0.00	0.00	
4,003.7	25.12	28.90	3,696.5	1,260.7	696.0	1,440.0	0.00	0.00	Exit Williams Minerals @ 3696' TVD
4,100.0	25.12	28.90	3,783.7	1,296.5	715.7	1,480.9	0.00	0.00	
4,200.0	25.12	28.90	3,874.2	1,333.7	736.3	1,523.4	0.00	0.00	
4,300.0	25.12	28.90	3,964.8	1,370.8	756.8	1,565.8	0.00	0.00	
4,400.0	25.12	28.90	4,055.3	1,408.0	777.3	1,608.3	0.00	0.00	
4,500.0	25.12	28.90	4,145.9	1,445.2	797.8	1,650.7	0.00	0.00	
4,600.0	25.12	28.90	4,236.4	1,482.3	818.3	1,693.2	0.00	0.00	
4,700.0	25.12	28.90	4,326.9	1,519.5	838.9	1,735.6	0.00	0.00	
4,800.0	25.12	28.90	4,417.5	1,556.7	859.4	1,778.1	0.00	0.00	
4,900.0	25.12	28.90	4,508.0	1,593.8	879.9	1,820.5	0.00	0.00	
4,938.8	25.12	28.90	4,543.1	1,608.3	887.9	1,837.0	0.00	0.00	Start Drop -3.00
5,000.0	23.29	28.90	4,599.0	1,630.2	900.0	1,862.1	3.00	-3.00	
5,100.0	20.29	28.90	4,691.8	1,662.7	917.9	1,899.2	3.00	-3.00	
5,200.0	17.29	28.90	4,786.5	1,690.9	933.5	1,931.4	3.00	-3.00	
5,300.0	14.29	28.90	4,882.7	1,714.7	946.6	1,958.6	3.00	-3.00	
5,400.0	11.29	28.90	4,980.2	1,734.1	957.3	1,980.8	3.00	-3.00	
5,500.0	8.29	28.90	5,078.7	1,749.0	965.5	1,997.8	3.00	-3.00	
5,600.0	5.29	28.90	5,178.0	1,759.3	971.3	2,009.6	3.00	-3.00	
5,700.0	2.29	28.90	5,277.8	1,765.1	974.4	2,016.2	3.00	-3.00	
5,736.2	1.20	28.90	5,314.0	1,766.1	975.0	2,017.3	3.00	-3.00	Williams Fork
5,776.2	0.00	0.00	5,354.0	1,766.4	975.2	2,017.7	3.00	-3.00	EOD; Inc=0° - Top of Gas - H26 596 WF04C-25
5,800.0	0.06	239.88	5,377.8	1,766.4	975.2	2,017.7	0.25	0.25	
5,900.0	0.31	239.88	5,477.8	1,766.3	974.9	2,017.4	0.25	0.25	
5,959.9	0.46	239.88	5,537.7	1,766.1	974.5	2,017.1	0.25	0.25	
6,000.0	0.46	239.88	5,577.8	1,765.9	974.3	2,016.8	0.00	0.00	
6,100.0	0.46	239.88	5,677.8	1,765.5	973.6	2,016.1	0.00	0.00	
6,200.0	0.46	239.88	5,777.8	1,765.1	972.9	2,015.4	0.00	0.00	
6,300.0	0.46	239.88	5,877.7	1,764.7	972.2	2,014.7	0.00	0.00	
6,400.0	0.46	239.88	5,977.7	1,764.3	971.5	2,014.1	0.00	0.00	
6,500.0	0.46	239.88	6,077.7	1,763.9	970.8	2,013.4	0.00	0.00	
6,600.0	0.46	239.88	6,177.7	1,763.5	970.1	2,012.7	0.00	0.00	
6,700.0	0.46	239.88	6,277.7	1,763.1	969.4	2,012.0	0.00	0.00	
6,800.0	0.46	239.88	6,377.7	1,762.7	968.7	2,011.3	0.00	0.00	
6,900.0	0.46	239.88	6,477.7	1,762.3	968.0	2,010.6	0.00	0.00	
7,000.0	0.46	239.88	6,577.7	1,761.9	967.3	2,009.9	0.00	0.00	
7,100.0	0.46	239.88	6,677.7	1,761.5	966.6	2,009.3	0.00	0.00	

## Planning Report

<b>Database:</b>	EDM 2003.21 US Multi User DB	<b>Local Co-ordinate Reference:</b>	Well WF04C-25 H26 596
<b>Company:</b>	EnCana Oil & Gas (USA) Inc	<b>TVD Reference:</b>	WELL @ 6114.0ft (Original Well Elev)
<b>Project:</b>	North Piceance	<b>MD Reference:</b>	WELL @ 6114.0ft (Original Well Elev)
<b>Site:</b>	H26 596	<b>North Reference:</b>	True
<b>Well:</b>	WF04C-25 H26 596	<b>Survey Calculation Method:</b>	Minimum Curvature
<b>Wellbore:</b>	DD		
<b>Design:</b>	Plan #2		

### Planned Survey

Measured Depth (ft)	Inclination (°)	Azimuth (°)	Vertical Depth (ft)	+N/-S (ft)	+E/-W (ft)	Vertical Section (ft)	Dogleg Rate (°/100ft)	Build Rate (°/100ft)	Comments / Formations
7,200.0	0.46	239.88	6,777.7	1,761.1	965.9	2,008.6	0.00	0.00	
7,300.0	0.46	239.88	6,877.7	1,760.7	965.3	2,007.9	0.00	0.00	
7,400.0	0.46	239.88	6,977.7	1,760.3	964.6	2,007.2	0.00	0.00	
7,500.0	0.46	239.88	7,077.7	1,759.9	963.9	2,006.5	0.00	0.00	
7,600.0	0.46	239.88	7,177.7	1,759.5	963.2	2,005.8	0.00	0.00	
7,700.0	0.46	239.88	7,277.7	1,759.1	962.5	2,005.2	0.00	0.00	
7,800.0	0.46	239.88	7,377.7	1,758.7	961.8	2,004.5	0.00	0.00	
7,900.0	0.46	239.88	7,477.7	1,758.3	961.1	2,003.8	0.00	0.00	
8,000.0	0.46	239.88	7,577.7	1,757.9	960.4	2,003.1	0.00	0.00	
8,100.0	0.46	239.88	7,677.7	1,757.5	959.7	2,002.4	0.00	0.00	
8,200.0	0.46	239.88	7,777.7	1,757.1	959.0	2,001.7	0.00	0.00	
8,300.0	0.46	239.88	7,877.7	1,756.7	958.3	2,001.1	0.00	0.00	
8,400.0	0.46	239.88	7,977.7	1,756.3	957.6	2,000.4	0.00	0.00	
8,500.0	0.46	239.88	8,077.7	1,755.9	956.9	1,999.7	0.00	0.00	
8,600.0	0.46	239.88	8,177.7	1,755.5	956.2	1,999.0	0.00	0.00	
8,700.0	0.46	239.88	8,277.7	1,755.1	955.5	1,998.3	0.00	0.00	
8,800.0	0.46	239.88	8,377.7	1,754.6	954.9	1,997.6	0.00	0.00	
8,900.0	0.46	239.88	8,477.7	1,754.2	954.2	1,996.9	0.00	0.00	
9,000.0	0.46	239.88	8,577.7	1,753.8	953.5	1,996.3	0.00	0.00	
9,100.0	0.46	239.88	8,677.7	1,753.4	952.8	1,995.6	0.00	0.00	
9,200.0	0.46	239.88	8,777.7	1,753.0	952.1	1,994.9	0.00	0.00	
9,300.0	0.46	239.88	8,877.7	1,752.6	951.4	1,994.2	0.00	0.00	
9,336.3	0.46	239.88	8,914.0	1,752.5	951.1	1,994.0	0.00	0.00	Rollins - H26 596 WF04C-25 BHL
9,400.0	0.46	239.88	8,977.6	1,752.2	950.7	1,993.5	0.00	0.00	
9,411.3	0.46	239.88	8,988.9	1,752.2	950.6	1,993.4	0.00	0.00	Drillers TD @ 9411' MD, 8989' TVD
9,411.4	0.46	239.88	8,989.0	1,752.2	950.6	1,993.4	0.00	0.00	
9,500.0	0.46	239.88	9,077.6	1,751.8	950.0	1,992.8	0.00	0.00	
9,600.0	0.46	239.88	9,177.6	1,751.4	949.3	1,992.2	0.00	0.00	
9,700.0	0.46	239.88	9,277.6	1,751.0	948.6	1,991.5	0.00	0.00	
9,800.0	0.46	239.88	9,377.6	1,750.6	947.9	1,990.8	0.00	0.00	
9,900.0	0.46	239.88	9,477.6	1,750.2	947.2	1,990.1	0.00	0.00	
10,000.0	0.46	239.88	9,577.6	1,749.8	946.5	1,989.4	0.00	0.00	
10,100.0	0.46	239.88	9,677.6	1,749.4	945.8	1,988.7	0.00	0.00	
10,200.0	0.46	239.88	9,777.6	1,749.0	945.1	1,988.1	0.00	0.00	
10,300.0	0.46	239.88	9,877.6	1,748.6	944.5	1,987.4	0.00	0.00	
10,400.0	0.46	239.88	9,977.6	1,748.2	943.8	1,986.7	0.00	0.00	
10,500.0	0.46	239.88	10,077.6	1,747.8	943.1	1,986.0	0.00	0.00	
10,600.0	0.46	239.88	10,177.6	1,747.4	942.4	1,985.3	0.00	0.00	
10,700.0	0.46	239.88	10,277.6	1,747.0	941.7	1,984.6	0.00	0.00	
10,800.0	0.46	239.88	10,377.6	1,746.6	941.0	1,983.9	0.00	0.00	
10,900.0	0.46	239.88	10,477.6	1,746.2	940.3	1,983.3	0.00	0.00	
10,922.4	0.46	239.88	10,500.0	1,746.1	940.1	1,983.1	0.00	0.00	Permit TD @ 10922' MD, 10500' TVD

## Planning Report

<b>Database:</b>	EDM 2003.21 US Multi User DB	<b>Local Co-ordinate Reference:</b>	Well WF04C-25 H26 596
<b>Company:</b>	EnCana Oil & Gas (USA) Inc	<b>TVD Reference:</b>	WELL @ 6114.0ft (Original Well Elev)
<b>Project:</b>	North Piceance	<b>MD Reference:</b>	WELL @ 6114.0ft (Original Well Elev)
<b>Site:</b>	H26 596	<b>North Reference:</b>	True
<b>Well:</b>	WF04C-25 H26 596	<b>Survey Calculation Method:</b>	Minimum Curvature
<b>Wellbore:</b>	DD		
<b>Design:</b>	Plan #2		

Targets									
Target Name	Dip Angle	Dip Dir.	TVD	+N/-S	+E/-W	Northing	Easting	Latitude	Longitude
- hit/miss target	(°)	(°)	(ft)	(ft)	(ft)	(ft)	(ft)		
- Shape									
H26 596 WF04C-25 BHI	0.00	0.00	8,914.0	1,752.5	951.1	1,651,021.99	2,259,972.94	39° 35' 29.29 N	108° 7' 34.64 W
- plan hits target center									
- Rectangle (sides W30.0 H50.0 D0.0)									
H26 596 WF04C-25 TG	0.00	0.00	5,354.0	1,766.4	975.2	1,651,035.24	2,259,997.38	39° 35' 29.43 N	108° 7' 34.33 W
- plan hits target center									
- Point									

Formations						
Measured Depth	Vertical Depth	Name	Lithology	Dip	Dip Direction	
(ft)	(ft)			(°)	(°)	
5,736.2	5,314.0	Williams Fork		0.00		
5,776.2	5,354.0	Top of Gas		0.00		
9,336.3	8,914.0	Rollins		0.00		

Plan Annotations					
Measured Depth	Vertical Depth	Local Coordinates			
(ft)	(ft)	+N/-S	+E/-W	Comment	
(ft)	(ft)	(ft)	(ft)		
200.0	200.0	0.0	0.0	KOP @ 200'	
1,037.4	1,010.9	158.2	87.3	EOB; Inc=25°	
4,003.7	3,696.5	1,260.7	696.0	Exit Williams Minerals @ 3696' TVD	
4,938.8	4,543.1	1,608.3	887.9	Start Drop -3.00	
5,776.2	5,354.0	1,766.4	975.2	EOD; Inc=0°	
9,411.3	8,988.9	1,752.2	950.6	Drillers TD @ 9411' MD, 8989' TVD	
10,922.4	10,500.0	1,746.1	940.1	Permit TD @ 10922' MD, 10500' TVD	