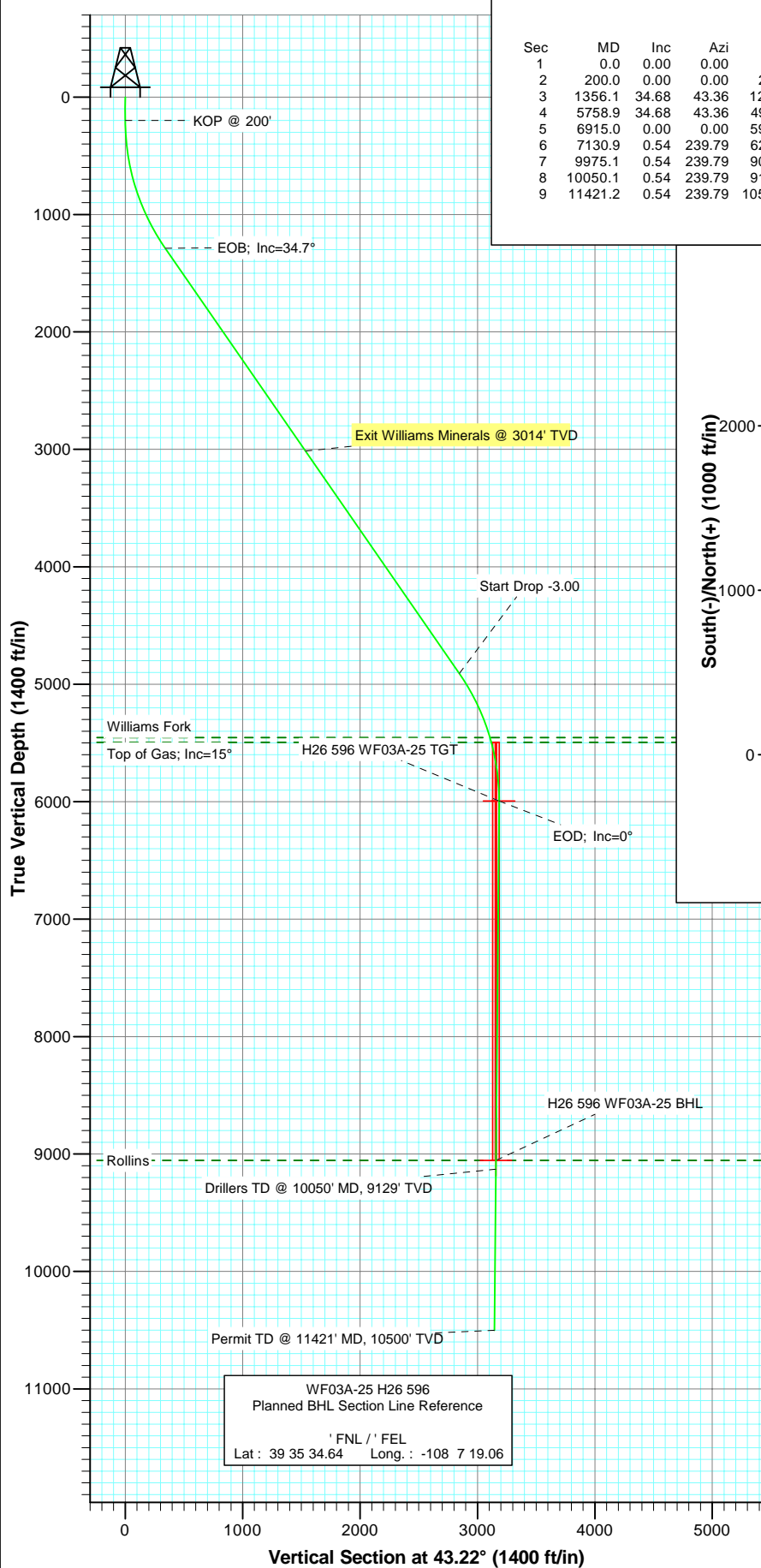
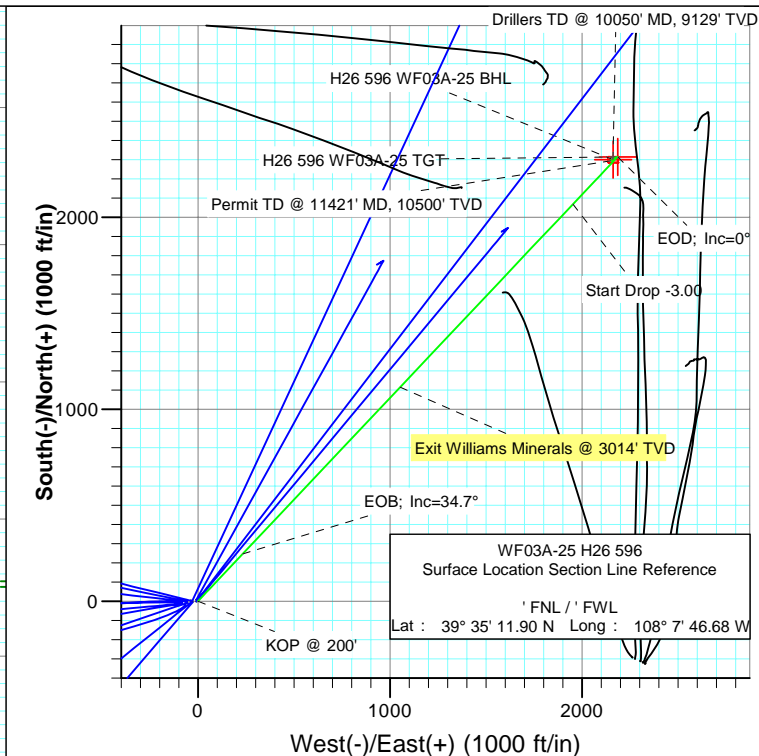




Project: North Piceance  
Site: H26 596  
Well: WF03A-25 H26 596  
Wellbore: DD  
Plan: Plan #2



SECTION DETAILS										
Sec	MD	Inc	Azi	TVD	+N/-S	+E/-W	DLeg	TFace	VSec	Target
1	0.0	0.00	0.00	0.0	0.0	0.0	0.00	0.00	0.0	
2	200.0	0.00	0.00	200.0	0.0	0.0	0.00	0.00	0.0	
3	1356.1	34.68	43.36	1286.8	246.7	233.0	3.00	43.36	339.4	
4	5758.9	34.68	43.36	4907.2	2068.2	1953.2	0.00	0.00	2844.7	
5	6915.0	0.00	0.00	5994.0	2315.0	2186.2	3.00	180.00	3184.1	H26 596 WF03A-25 TGT
6	7130.9	0.54	239.79	6209.9	2314.4	2185.3	0.25	239.79	3183.1	
7	9975.1	0.54	239.79	9054.0	2301.0	2162.1	0.00	0.00	3157.4	H26 596 WF03A-25 BHL
8	10050.1	0.54	239.79	9129.0	2300.6	2161.5	0.00	0.00	3156.7	
9	11421.2	0.54	239.79	10500.0	2294.1	2150.4	0.00	0.00	3144.4	



FORMATION TOP DETAILS		
TVDPath	MDPath	Formation
5454.0	6367.5	Williams Fork
5494.0	6409.1	Top of Gas; Inc=15°
9054.0	9975.1	Rollins



Azimuths to True North  
Magnetic North: 10.64°  
Magnetic Field  
Strength: 52491.1snT  
Dip Angle: 65.85°  
Date: 8/21/2009  
Model: IGRF200510

DESIGN DETAILS: Plan #2

Job# 85xxx; LR  
WELL @ 6114.0ft (Original Well Elev)

Target	Azimuth	Origin Type	N/S	E/W	From TVD
H26 596 WF03A-25 BHL	43.22	Slot	0.0	0.0	0.0

## Planning Report

<b>Database:</b>	EDM 2003.21 US Multi User Db	<b>Local Co-ordinate Reference:</b>	Well WF03A-25 H26 596
<b>Company:</b>	EnCana Oil & Gas (USA) Inc	<b>TVD Reference:</b>	WELL @ 6114.0ft (Original Well Elev)
<b>Project:</b>	North Piceance	<b>MD Reference:</b>	WELL @ 6114.0ft (Original Well Elev)
<b>Site:</b>	H26 596	<b>North Reference:</b>	True
<b>Well:</b>	WF03A-25 H26 596	<b>Survey Calculation Method:</b>	Minimum Curvature
<b>Wellbore:</b>	DD		
<b>Design:</b>	Plan #2		

<b>Project</b>	North Piceance		
<b>Map System:</b>	US State Plane 1983	<b>System Datum:</b>	Mean Sea Level
<b>Geo Datum:</b>	North American Datum 1983		
<b>Map Zone:</b>	Colorado Central Zone		

Site		H26 596			
Site Position:		Northing:	1,649,294.53 ft	Latitude:	39° 35' 11.93 N
From:	Lat/Long	Easting:	2,258,943.98 ft	Longitude:	108° 7' 47.14 W
Position Uncertainty:	0.0 ft	Slot Radius:	in	Grid Convergence:	-1.66 °

Well	WF03A-25 H26 596					
Well Position	+N/-S	0.0 ft	Northing:	1,649,290.44 ft	Latitude:	39° 35' 11.90 N
	+E/-W	0.0 ft	Easting:	2,258,979.89 ft	Longitude:	108° 7' 46.68 W
Position Uncertainty		0.0 ft	Wellhead Elevation:	ft	Ground Level:	6,092.0 ft

<b>Wellbore</b>	DD				
<b>Magnetics</b>	<b>Model Name</b>	<b>Sample Date</b>	<b>Declination (°)</b>	<b>Dip Angle (°)</b>	<b>Field Strength (nT)</b>
	IGRF200510	8/21/2009	10.64	65.85	52,491

<b>Design</b>	Plan #2			
<b>Audit Notes:</b>				
<b>Version:</b>	<b>Phase:</b>	PLAN	<b>Tie On Depth:</b>	0.0
<b>Vertical Section:</b>	<b>Depth From (TVD) (ft)</b>	<b>+N/-S (ft)</b>	<b>+E/-W (ft)</b>	<b>Direction (°)</b>
	0.0	0.0	0.0	43.22

<b>Plan Sections</b>										
Measured Depth (ft)	Inclination (°)	Azimuth (°)	Vertical Depth (ft)	+N/-S (ft)	+E/-W (ft)	Dogleg Rate (°/100ft)	Build Rate (°/100ft)	Turn Rate (°/100ft)	TFO (°)	Target
0.0	0.00	0.00	0.0	0.0	0.0	0.00	0.00	0.00	0.00	
200.0	0.00	0.00	200.0	0.0	0.0	0.00	0.00	0.00	0.00	
1,356.1	34.68	43.36	1,286.8	246.7	233.0	3.00	3.00	0.00	43.36	
5,758.9	34.68	43.36	4,907.2	2,068.2	1,953.2	0.00	0.00	0.00	0.00	
6,915.0	0.00	0.00	5,994.0	2,314.9	2,186.2	3.00	-3.00	0.00	180.00	H26 596 WF03A-25 T
7,130.9	0.54	239.79	6,209.9	2,314.4	2,185.3	0.25	0.25	-55.68	239.79	
9,975.1	0.54	239.79	9,054.0	2,301.0	2,162.1	0.00	0.00	0.00	0.00	H26 596 WF03A-25 E
10,050.1	0.54	239.79	9,129.0	2,300.6	2,161.5	0.00	0.00	0.00	0.00	
11,421.2	0.54	239.79	10,500.0	2,294.1	2,150.4	0.00	0.00	0.00	0.00	

# Planning Report

<b>Database:</b>	EDM 2003.21 US Multi User Db	<b>Local Co-ordinate Reference:</b>	Well WF03A-25 H26 596
<b>Company:</b>	EnCana Oil & Gas (USA) Inc	<b>TVD Reference:</b>	WELL @ 6114.0ft (Original Well Elev)
<b>Project:</b>	North Piceance	<b>MD Reference:</b>	WELL @ 6114.0ft (Original Well Elev)
<b>Site:</b>	H26 596	<b>North Reference:</b>	True
<b>Well:</b>	WF03A-25 H26 596	<b>Survey Calculation Method:</b>	Minimum Curvature
<b>Wellbore:</b>	DD		
<b>Design:</b>	Plan #2		

## Planned Survey

Measured Depth (ft)	Inclination (°)	Azimuth (°)	Vertical Depth (ft)	+N/-S (ft)	+E/-W (ft)	Vertical Section (ft)	Dogleg Rate (°/100ft)	Build Rate (°/100ft)	Comments / Formations
0.0	0.00	0.00	0.0	0.0	0.0	0.0	0.00	0.00	
30.0	0.00	0.00	30.0	0.0	0.0	0.0	0.00	0.00	
60.0	0.00	0.00	60.0	0.0	0.0	0.0	0.00	0.00	
90.0	0.00	0.00	90.0	0.0	0.0	0.0	0.00	0.00	
120.0	0.00	0.00	120.0	0.0	0.0	0.0	0.00	0.00	
150.0	0.00	0.00	150.0	0.0	0.0	0.0	0.00	0.00	
180.0	0.00	0.00	180.0	0.0	0.0	0.0	0.00	0.00	
200.0	0.00	0.00	200.0	0.0	0.0	0.0	0.00	0.00	KOP @ 200'
210.0	0.30	43.36	210.0	0.0	0.0	0.0	3.00	3.00	
240.0	1.20	43.36	240.0	0.3	0.3	0.4	3.00	3.00	
270.0	2.10	43.36	270.0	0.9	0.9	1.3	3.00	3.00	
300.0	3.00	43.36	300.0	1.9	1.8	2.6	3.00	3.00	
330.0	3.90	43.36	329.9	3.2	3.0	4.4	3.00	3.00	
360.0	4.80	43.36	359.8	4.9	4.6	6.7	3.00	3.00	
390.0	5.70	43.36	389.7	6.9	6.5	9.4	3.00	3.00	
420.0	6.60	43.36	419.5	9.2	8.7	12.7	3.00	3.00	
450.0	7.50	43.36	449.3	11.9	11.2	16.3	3.00	3.00	
480.0	8.40	43.36	479.0	14.9	14.1	20.5	3.00	3.00	
510.0	9.30	43.36	508.6	18.3	17.2	25.1	3.00	3.00	
540.0	10.20	43.36	538.2	21.9	20.7	30.2	3.00	3.00	
570.0	11.10	43.36	567.7	26.0	24.5	35.7	3.00	3.00	
600.0	12.00	43.36	597.1	30.3	28.7	41.7	3.00	3.00	
630.0	12.90	43.36	626.4	35.0	33.1	48.2	3.00	3.00	
660.0	13.80	43.36	655.6	40.1	37.9	55.1	3.00	3.00	
690.0	14.70	43.36	684.6	45.5	42.9	62.5	3.00	3.00	
720.0	15.60	43.36	713.6	51.2	48.3	70.4	3.00	3.00	
750.0	16.50	43.36	742.4	57.2	54.0	78.6	3.00	3.00	
780.0	17.40	43.36	771.1	63.5	60.0	87.4	3.00	3.00	
810.0	18.30	43.36	799.7	70.2	66.3	96.6	3.00	3.00	
840.0	19.20	43.36	828.1	77.2	72.9	106.2	3.00	3.00	
870.0	20.10	43.36	856.3	84.6	79.9	116.3	3.00	3.00	
900.0	21.00	43.36	884.4	92.2	87.1	126.9	3.00	3.00	
930.0	21.90	43.36	912.4	100.2	94.6	137.8	3.00	3.00	
960.0	22.80	43.36	940.1	108.5	102.5	149.2	3.00	3.00	
990.0	23.70	43.36	967.7	117.1	110.6	161.1	3.00	3.00	
1,020.0	24.60	43.36	995.0	126.0	119.0	173.3	3.00	3.00	
1,050.0	25.50	43.36	1,022.2	135.3	127.7	186.0	3.00	3.00	
1,080.0	26.40	43.36	1,049.2	144.8	136.8	199.2	3.00	3.00	
1,110.0	27.30	43.36	1,076.0	154.7	146.1	212.7	3.00	3.00	
1,140.0	28.20	43.36	1,102.5	164.8	155.6	226.7	3.00	3.00	
1,170.0	29.10	43.36	1,128.8	175.3	165.5	241.1	3.00	3.00	
1,200.0	30.00	43.36	1,154.9	186.0	175.7	255.9	3.00	3.00	
1,230.0	30.90	43.36	1,180.8	197.1	186.1	271.1	3.00	3.00	
1,260.0	31.80	43.36	1,206.4	208.4	196.8	286.7	3.00	3.00	
1,290.0	32.70	43.36	1,231.8	220.1	207.8	302.7	3.00	3.00	
1,320.0	33.60	43.36	1,256.9	232.0	219.1	319.1	3.00	3.00	
1,350.0	34.50	43.36	1,281.8	244.2	230.6	335.9	3.00	3.00	
1,356.1	34.68	43.36	1,286.8	246.7	233.0	339.4	3.00	3.00	EOB; Inc=34.7°
1,380.0	34.68	43.36	1,306.4	256.6	242.3	353.0	0.00	0.00	
1,410.0	34.68	43.36	1,331.1	269.0	254.1	370.0	0.00	0.00	
1,440.0	34.68	43.36	1,355.8	281.4	265.8	387.1	0.00	0.00	
1,470.0	34.68	43.36	1,380.4	293.8	277.5	404.2	0.00	0.00	

## Planning Report

<b>Database:</b>	EDM 2003.21 US Multi User Db	<b>Local Co-ordinate Reference:</b>	Well WF03A-25 H26 596
<b>Company:</b>	EnCana Oil & Gas (USA) Inc	<b>TVD Reference:</b>	WELL @ 6114.0ft (Original Well Elev)
<b>Project:</b>	North Piceance	<b>MD Reference:</b>	WELL @ 6114.0ft (Original Well Elev)
<b>Site:</b>	H26 596	<b>North Reference:</b>	True
<b>Well:</b>	WF03A-25 H26 596	<b>Survey Calculation Method:</b>	Minimum Curvature
<b>Wellbore:</b>	DD		
<b>Design:</b>	Plan #2		

### Planned Survey

Measured Depth (ft)	Inclination (°)	Azimuth (°)	Vertical Depth (ft)	+N/-S (ft)	+E/-W (ft)	Vertical Section (ft)	Dogleg Rate (°/100ft)	Build Rate (°/100ft)	Comments / Formations
1,500.0	34.68	43.36	1,405.1	306.3	289.2	421.2	0.00	0.00	
1,530.0	34.68	43.36	1,429.8	318.7	300.9	438.3	0.00	0.00	
1,560.0	34.68	43.36	1,454.4	331.1	312.7	455.4	0.00	0.00	
1,590.0	34.68	43.36	1,479.1	343.5	324.4	472.5	0.00	0.00	
1,620.0	34.68	43.36	1,503.8	355.9	336.1	489.5	0.00	0.00	
1,650.0	34.68	43.36	1,528.5	368.3	347.8	506.6	0.00	0.00	
1,680.0	34.68	43.36	1,553.1	380.7	359.5	523.7	0.00	0.00	
1,710.0	34.68	43.36	1,577.8	393.1	371.3	540.7	0.00	0.00	
1,740.0	34.68	43.36	1,602.5	405.6	383.0	557.8	0.00	0.00	
1,770.0	34.68	43.36	1,627.1	418.0	394.7	574.9	0.00	0.00	
1,800.0	34.68	43.36	1,651.8	430.4	406.4	592.0	0.00	0.00	
1,830.0	34.68	43.36	1,676.5	442.8	418.2	609.0	0.00	0.00	
1,860.0	34.68	43.36	1,701.1	455.2	429.9	626.1	0.00	0.00	
1,890.0	34.68	43.36	1,725.8	467.6	441.6	643.2	0.00	0.00	
1,920.0	34.68	43.36	1,750.5	480.0	453.3	660.2	0.00	0.00	
1,950.0	34.68	43.36	1,775.1	492.4	465.0	677.3	0.00	0.00	
1,980.0	34.68	43.36	1,799.8	504.8	476.8	694.4	0.00	0.00	
2,010.0	34.68	43.36	1,824.5	517.3	488.5	711.5	0.00	0.00	
2,040.0	34.68	43.36	1,849.2	529.7	500.2	728.5	0.00	0.00	
2,070.0	34.68	43.36	1,873.8	542.1	511.9	745.6	0.00	0.00	
2,100.0	34.68	43.36	1,898.5	554.5	523.6	762.7	0.00	0.00	
2,130.0	34.68	43.36	1,923.2	566.9	535.4	779.7	0.00	0.00	
2,160.0	34.68	43.36	1,947.8	579.3	547.1	796.8	0.00	0.00	
2,190.0	34.68	43.36	1,972.5	591.7	558.8	813.9	0.00	0.00	
2,220.0	34.68	43.36	1,997.2	604.1	570.5	830.9	0.00	0.00	
2,250.0	34.68	43.36	2,021.8	616.5	582.2	848.0	0.00	0.00	
2,280.0	34.68	43.36	2,046.5	629.0	594.0	865.1	0.00	0.00	
2,310.0	34.68	43.36	2,071.2	641.4	605.7	882.2	0.00	0.00	
2,340.0	34.68	43.36	2,095.8	653.8	617.4	899.2	0.00	0.00	
2,370.0	34.68	43.36	2,120.5	666.2	629.1	916.3	0.00	0.00	
2,400.0	34.68	43.36	2,145.2	678.6	640.9	933.4	0.00	0.00	
2,430.0	34.68	43.36	2,169.9	691.0	652.6	950.4	0.00	0.00	
2,460.0	34.68	43.36	2,194.5	703.4	664.3	967.5	0.00	0.00	
2,490.0	34.68	43.36	2,219.2	715.8	676.0	984.6	0.00	0.00	

# Planning Report

<b>Database:</b>	EDM 2003.21 US Multi User DB	<b>Local Co-ordinate Reference:</b>	Well WF03A-25 H26 596
<b>Company:</b>	EnCana Oil & Gas (USA) Inc	<b>TVD Reference:</b>	WELL @ 6114.0ft (Original Well Elev)
<b>Project:</b>	North Piceance	<b>MD Reference:</b>	WELL @ 6114.0ft (Original Well Elev)
<b>Site:</b>	H26 596	<b>North Reference:</b>	True
<b>Well:</b>	WF03A-25 H26 596	<b>Survey Calculation Method:</b>	Minimum Curvature
<b>Wellbore:</b>	DD		
<b>Design:</b>	Plan #2		

Planned Survey									
Measured Depth (ft)	Inclination (°)	Azimuth (°)	Vertical Depth (ft)	+N/-S (ft)	+E/-W (ft)	Vertical Section (ft)	Dogleg Rate (°/100ft)	Build Rate (°/100ft)	Comments / Formations
2,500.0	34.68	43.36	2,227.4	720.0	679.9	990.3	0.00	0.00	
2,600.0	34.68	43.36	2,309.6	761.3	719.0	1,047.2	0.00	0.00	
2,700.0	34.68	43.36	2,391.9	802.7	758.1	1,104.1	0.00	0.00	
2,800.0	34.68	43.36	2,474.1	844.1	797.1	1,161.0	0.00	0.00	
2,900.0	34.68	43.36	2,556.3	885.5	836.2	1,217.9	0.00	0.00	
3,000.0	34.68	43.36	2,638.6	926.8	875.3	1,274.8	0.00	0.00	
3,100.0	34.68	43.36	2,720.8	968.2	914.3	1,331.7	0.00	0.00	
3,200.0	34.68	43.36	2,803.0	1,009.6	953.4	1,388.6	0.00	0.00	
3,300.0	34.68	43.36	2,885.3	1,051.0	992.5	1,445.5	0.00	0.00	
3,400.0	34.68	43.36	2,967.5	1,092.3	1,031.5	1,502.4	0.00	0.00	
3,457.2	34.68	43.36	3,014.5	1,116.0	1,053.9	1,535.0	0.00	0.00	Exit Williams Minerals @ 3014' TVD
3,500.0	34.68	43.36	3,049.7	1,133.7	1,070.6	1,559.3	0.00	0.00	
3,600.0	34.68	43.36	3,132.0	1,175.1	1,109.7	1,616.2	0.00	0.00	
3,700.0	34.68	43.36	3,214.2	1,216.4	1,148.8	1,673.1	0.00	0.00	
3,800.0	34.68	43.36	3,296.4	1,257.8	1,187.8	1,730.0	0.00	0.00	
3,900.0	34.68	43.36	3,378.7	1,299.2	1,226.9	1,786.9	0.00	0.00	
4,000.0	34.68	43.36	3,460.9	1,340.6	1,266.0	1,843.8	0.00	0.00	
4,100.0	34.68	43.36	3,543.1	1,381.9	1,305.0	1,900.7	0.00	0.00	
4,200.0	34.68	43.36	3,625.3	1,423.3	1,344.1	1,957.6	0.00	0.00	
4,300.0	34.68	43.36	3,707.6	1,464.7	1,383.2	2,014.6	0.00	0.00	
4,400.0	34.68	43.36	3,789.8	1,506.0	1,422.2	2,071.5	0.00	0.00	
4,500.0	34.68	43.36	3,872.0	1,547.4	1,461.3	2,128.4	0.00	0.00	
4,600.0	34.68	43.36	3,954.3	1,588.8	1,500.4	2,185.3	0.00	0.00	
4,700.0	34.68	43.36	4,036.5	1,630.2	1,539.5	2,242.2	0.00	0.00	
4,800.0	34.68	43.36	4,118.7	1,671.5	1,578.5	2,299.1	0.00	0.00	
4,900.0	34.68	43.36	4,201.0	1,712.9	1,617.6	2,356.0	0.00	0.00	
5,000.0	34.68	43.36	4,283.2	1,754.3	1,656.7	2,412.9	0.00	0.00	
5,100.0	34.68	43.36	4,365.4	1,795.6	1,695.7	2,469.8	0.00	0.00	
5,200.0	34.68	43.36	4,447.7	1,837.0	1,734.8	2,526.7	0.00	0.00	
5,300.0	34.68	43.36	4,529.9	1,878.4	1,773.9	2,583.6	0.00	0.00	
5,400.0	34.68	43.36	4,612.1	1,919.8	1,812.9	2,640.5	0.00	0.00	
5,500.0	34.68	43.36	4,694.3	1,961.1	1,852.0	2,697.4	0.00	0.00	
5,600.0	34.68	43.36	4,776.6	2,002.5	1,891.1	2,754.3	0.00	0.00	
5,700.0	34.68	43.36	4,858.8	2,043.9	1,930.2	2,811.2	0.00	0.00	
5,758.9	34.68	43.36	4,907.2	2,068.2	1,953.2	2,844.7	0.00	0.00	Start Drop -3.00
5,800.0	33.45	43.36	4,941.3	2,085.0	1,969.0	2,867.7	3.00	-3.00	
5,900.0	30.45	43.36	5,026.1	2,123.4	2,005.3	2,920.7	3.00	-3.00	
6,000.0	27.45	43.36	5,113.6	2,158.6	2,038.5	2,969.1	3.00	-3.00	
6,100.0	24.45	43.36	5,203.5	2,190.4	2,068.6	3,012.8	3.00	-3.00	
6,200.0	21.45	43.36	5,295.6	2,218.8	2,095.3	3,051.8	3.00	-3.00	
6,300.0	18.45	43.36	5,389.6	2,243.6	2,118.8	3,085.9	3.00	-3.00	
6,367.5	16.42	43.36	5,454.0	2,258.3	2,132.7	3,106.1	3.00	-3.00	Williams Fork
6,400.0	15.45	43.36	5,485.2	2,264.8	2,138.8	3,115.1	3.00	-3.00	
6,409.1	15.18	43.36	5,494.0	2,266.5	2,140.4	3,117.5	3.00	-3.00	Top of Gas; Inc=15°
6,500.0	12.45	43.36	5,582.3	2,282.3	2,155.3	3,139.2	3.00	-3.00	
6,600.0	9.45	43.36	5,680.4	2,296.1	2,168.4	3,158.1	3.00	-3.00	
6,700.0	6.45	43.36	5,779.5	2,306.2	2,177.9	3,172.0	3.00	-3.00	
6,800.0	3.45	43.36	5,879.1	2,312.4	2,183.8	3,180.6	3.00	-3.00	
6,900.0	0.45	43.36	5,979.0	2,314.9	2,186.1	3,184.0	3.00	-3.00	
6,915.0	0.00	43.36	5,994.0	2,315.0	2,186.2	3,184.1	3.00	-3.00	EOD; Inc=0° - H26 596 WF03A-25 TGT
7,000.0	0.21	239.79	6,079.0	2,314.9	2,186.0	3,183.9	0.25	0.25	
7,100.0	0.46	239.79	6,179.0	2,314.6	2,185.5	3,183.3	0.25	0.25	

## Planning Report

<b>Database:</b>	EDM 2003.21 US Multi User DB	<b>Local Co-ordinate Reference:</b>	Well WF03A-25 H26 596
<b>Company:</b>	EnCana Oil & Gas (USA) Inc	<b>TVD Reference:</b>	WELL @ 6114.0ft (Original Well Elev)
<b>Project:</b>	North Piceance	<b>MD Reference:</b>	WELL @ 6114.0ft (Original Well Elev)
<b>Site:</b>	H26 596	<b>North Reference:</b>	True
<b>Well:</b>	WF03A-25 H26 596	<b>Survey Calculation Method:</b>	Minimum Curvature
<b>Wellbore:</b>	DD		
<b>Design:</b>	Plan #2		

### Planned Survey

Measured Depth (ft)	Inclination (°)	Azimuth (°)	Vertical Depth (ft)	+N/-S (ft)	+E/-W (ft)	Vertical Section (ft)	Dogleg Rate (°/100ft)	Build Rate (°/100ft)	Comments / Formations
7,130.9	0.54	239.79	6,209.9	2,314.4	2,185.3	3,183.1	0.25	0.25	
7,200.0	0.54	239.79	6,279.0	2,314.1	2,184.7	3,182.5	0.00	0.00	
7,300.0	0.54	239.79	6,379.0	2,313.6	2,183.9	3,181.6	0.00	0.00	
7,400.0	0.54	239.79	6,479.0	2,313.2	2,183.1	3,180.7	0.00	0.00	
7,500.0	0.54	239.79	6,579.0	2,312.7	2,182.3	3,179.8	0.00	0.00	
7,600.0	0.54	239.79	6,679.0	2,312.2	2,181.5	3,178.9	0.00	0.00	
7,700.0	0.54	239.79	6,779.0	2,311.7	2,180.6	3,178.0	0.00	0.00	
7,800.0	0.54	239.79	6,879.0	2,311.3	2,179.8	3,177.0	0.00	0.00	
7,900.0	0.54	239.79	6,979.0	2,310.8	2,179.0	3,176.1	0.00	0.00	
8,000.0	0.54	239.79	7,079.0	2,310.3	2,178.2	3,175.2	0.00	0.00	
8,100.0	0.54	239.79	7,179.0	2,309.9	2,177.4	3,174.3	0.00	0.00	
8,200.0	0.54	239.79	7,279.0	2,309.4	2,176.6	3,173.4	0.00	0.00	
8,300.0	0.54	239.79	7,379.0	2,308.9	2,175.8	3,172.5	0.00	0.00	
8,400.0	0.54	239.79	7,479.0	2,308.4	2,174.9	3,171.6	0.00	0.00	
8,500.0	0.54	239.79	7,579.0	2,308.0	2,174.1	3,170.7	0.00	0.00	
8,600.0	0.54	239.79	7,679.0	2,307.5	2,173.3	3,169.8	0.00	0.00	
8,700.0	0.54	239.79	7,779.0	2,307.0	2,172.5	3,168.9	0.00	0.00	
8,800.0	0.54	239.79	7,878.9	2,306.5	2,171.7	3,168.0	0.00	0.00	
8,900.0	0.54	239.79	7,978.9	2,306.1	2,170.9	3,167.1	0.00	0.00	
9,000.0	0.54	239.79	8,078.9	2,305.6	2,170.1	3,166.2	0.00	0.00	
9,100.0	0.54	239.79	8,178.9	2,305.1	2,169.3	3,165.3	0.00	0.00	
9,200.0	0.54	239.79	8,278.9	2,304.6	2,168.4	3,164.4	0.00	0.00	
9,300.0	0.54	239.79	8,378.9	2,304.2	2,167.6	3,163.5	0.00	0.00	
9,400.0	0.54	239.79	8,478.9	2,303.7	2,166.8	3,162.6	0.00	0.00	
9,500.0	0.54	239.79	8,578.9	2,303.2	2,166.0	3,161.7	0.00	0.00	
9,600.0	0.54	239.79	8,678.9	2,302.7	2,165.2	3,160.8	0.00	0.00	
9,700.0	0.54	239.79	8,778.9	2,302.3	2,164.4	3,159.9	0.00	0.00	
9,800.0	0.54	239.79	8,878.9	2,301.8	2,163.6	3,159.0	0.00	0.00	
9,900.0	0.54	239.79	8,978.9	2,301.3	2,162.7	3,158.1	0.00	0.00	
9,975.1	0.54	239.79	9,054.0	2,301.0	2,162.1	3,157.4	0.00	0.00	Rollins - H26 596 WF03A-25 BHL
10,000.0	0.54	239.79	9,078.9	2,300.8	2,161.9	3,157.2	0.00	0.00	
10,050.1	0.54	239.79	9,129.0	2,300.6	2,161.5	3,156.7	0.00	0.00	Drillers TD @ 10050' MD, 9129' TVD
10,100.0	0.54	239.79	9,178.9	2,300.4	2,161.1	3,156.3	0.00	0.00	
10,200.0	0.54	239.79	9,278.9	2,299.9	2,160.3	3,155.4	0.00	0.00	
10,300.0	0.54	239.79	9,378.9	2,299.4	2,159.5	3,154.5	0.00	0.00	
10,400.0	0.54	239.79	9,478.9	2,299.0	2,158.7	3,153.6	0.00	0.00	
10,500.0	0.54	239.79	9,578.9	2,298.5	2,157.9	3,152.7	0.00	0.00	
10,600.0	0.54	239.79	9,678.9	2,298.0	2,157.0	3,151.8	0.00	0.00	
10,700.0	0.54	239.79	9,778.9	2,297.5	2,156.2	3,150.9	0.00	0.00	
10,800.0	0.54	239.79	9,878.9	2,297.1	2,155.4	3,150.0	0.00	0.00	
10,900.0	0.54	239.79	9,978.9	2,296.6	2,154.6	3,149.1	0.00	0.00	
11,000.0	0.54	239.79	10,078.8	2,296.1	2,153.8	3,148.2	0.00	0.00	
11,100.0	0.54	239.79	10,178.8	2,295.6	2,153.0	3,147.3	0.00	0.00	
11,200.0	0.54	239.79	10,278.8	2,295.2	2,152.2	3,146.3	0.00	0.00	
11,300.0	0.54	239.79	10,378.8	2,294.7	2,151.3	3,145.4	0.00	0.00	
11,400.0	0.54	239.79	10,478.8	2,294.2	2,150.5	3,144.5	0.00	0.00	
11,421.2	0.54	239.79	10,500.0	2,294.1	2,150.4	3,144.4	0.00	0.00	

## Planning Report

<b>Database:</b>	EDM 2003.21 US Multi User DB	<b>Local Co-ordinate Reference:</b>	Well WF03A-25 H26 596
<b>Company:</b>	EnCana Oil & Gas (USA) Inc	<b>TVD Reference:</b>	WELL @ 6114.0ft (Original Well Elev)
<b>Project:</b>	North Piceance	<b>MD Reference:</b>	WELL @ 6114.0ft (Original Well Elev)
<b>Site:</b>	H26 596	<b>North Reference:</b>	True
<b>Well:</b>	WF03A-25 H26 596	<b>Survey Calculation Method:</b>	Minimum Curvature
<b>Wellbore:</b>	DD		
<b>Design:</b>	Plan #2		

Targets									
Target Name	Dip Angle	Dip Dir.	TVD	+N/-S	+E/-W	Northing	Easting	Latitude	Longitude
- hit/miss target	(°)	(°)	(ft)	(ft)	(ft)	(ft)	(ft)		
- Shape									
H26 596 WF03A-25 TG <sup>+</sup>	0.00	0.00	5,994.0	2,315.0	2,186.2	1,651,541.15	2,261,232.13	39° 35' 34.78 N	108° 7' 18.75 W
- plan hits target center									
- Point									
H26 596 WF03A-25 BHL	0.00	0.00	9,054.0	2,301.0	2,162.1	1,651,527.86	2,261,207.70	39° 35' 34.64 N	108° 7' 19.06 W
- plan hits target center									
- Rectangle (sides W30.0 H50.0 D0.0)									

Formations					
Measured Depth	Vertical Depth	Name	Lithology	Dip	Dip Direction
(ft)	(ft)			(°)	(°)
6,367.5	5,454.0	Williams Fork		0.00	
6,409.1	5,494.0	Top of Gas; Inc=15°		0.00	
9,975.1	9,054.0	Rollins		0.00	

Plan Annotations				
Measured Depth	Vertical Depth	Local Coordinates		Comment
(ft)	(ft)	+N/-S (ft)	+E/-W (ft)	
200.0	200.0	0.0	0.0	KOP @ 200'
1,356.1	1,286.8	246.7	233.0	EOB; Inc=34.7°
3,457.2	3,014.5	1,116.0	1,053.9	Exit Williams Minerals @ 3014' TVD
5,758.9	4,907.2	2,068.2	1,953.2	Start Drop -3.00
6,915.0	5,994.0	2,315.0	2,186.2	EOD; Inc=0°
10,050.1	9,129.0	2,300.6	2,161.5	Drillers TD @ 10050' MD, 9129' TVD
11,421.2	10,500.0	2,294.1	2,150.4	Permit TD @ 11421' MD, 10500' TVD