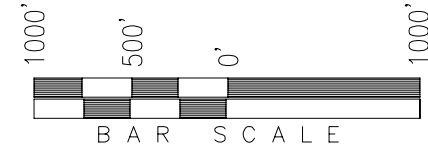
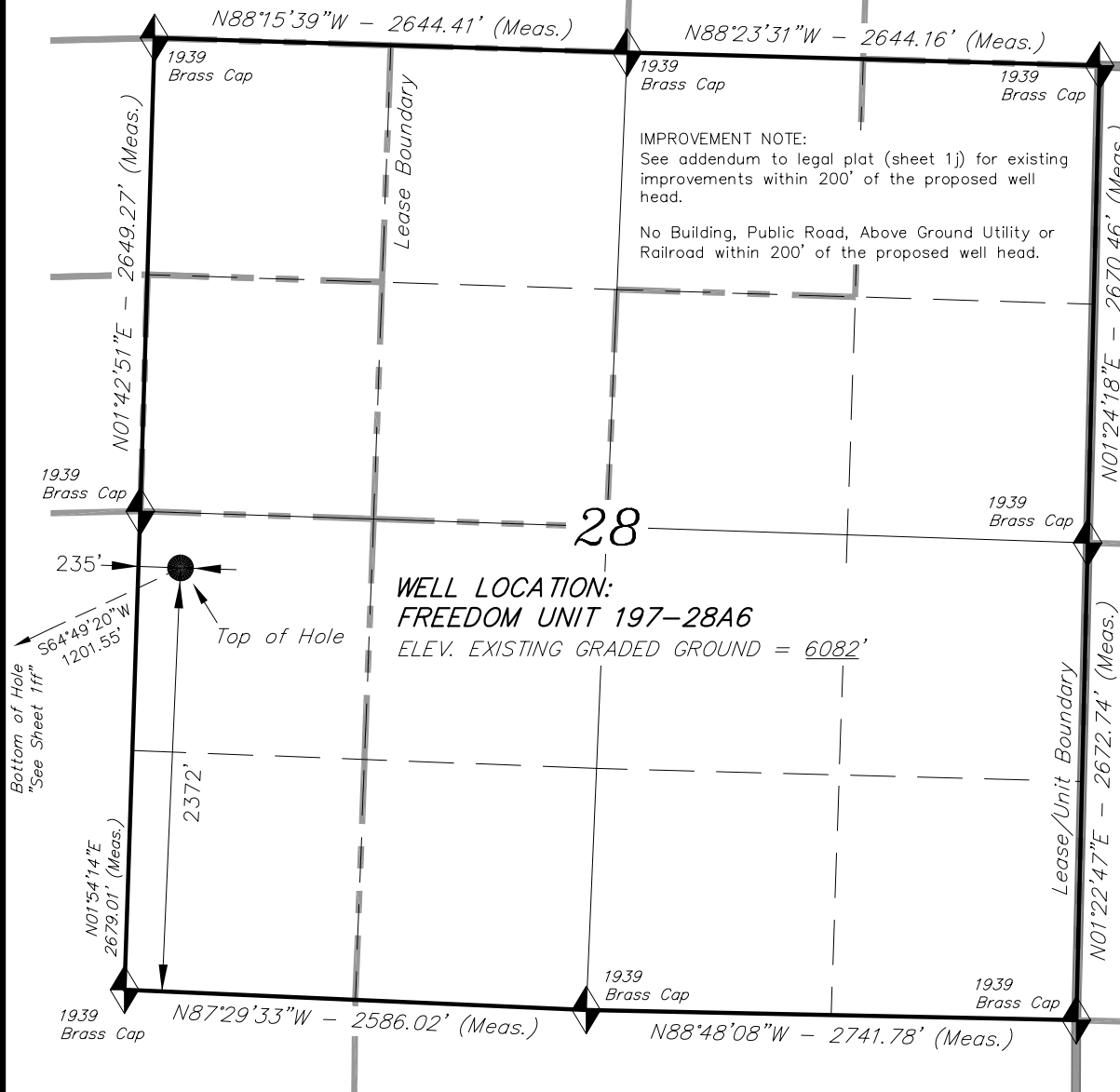


T1S, R97W, 6th P.M.

EXXON MOBIL CORPORATION

WELL LOCATION, FREEDOM UNIT 197-28A6,
LOCATED AS SHOWN IN THE NW 1/4 SW 1/4
OF SECTION 28, T1S, R97W, 6th P.M. RIO
BLANCO COUNTY, COLORADO.



◆ = SECTION CORNERS LOCATED

BASIS OF BEARINGS & BASIS OF ELEVATION

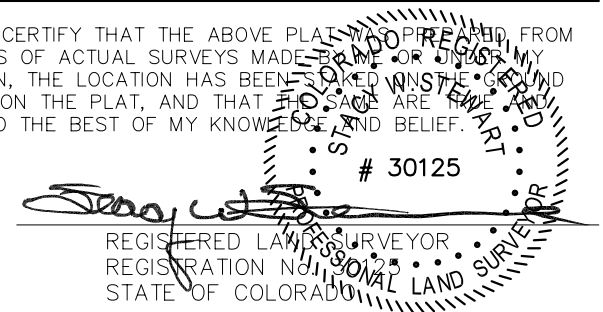
BASIS OF BEARINGS IS A LINE BETWEEN MAGNOLIA & MEYERS TRIANGULATION STATION GRID COORDINATES WHICH IS ASSUMED TO BEAR S82°36'07"E.

BASIS OF ELEVATIONS IS MAGNOLIA TRIANGULATION STATION LOCATED IN THE NW 1/4 OF SECTION 9, T2S, R96W, 6th P.M. REPORTED FROM THE NATIONAL GEODETIC SURVEY AS BEING 7529 FEET (NAVD 88). WE MEASURED IT TO BE 7526.2'

NOTES:

1. Well footages are measured at right angles to the Section Lines.
2. Bearings are based on Global Positioning Satellite observations.
3. G.P.S. Operator: D. PETTY, (PDOP) = 3.1

THIS IS TO CERTIFY THAT THE ABOVE PLAT WAS PREPARED FROM FIELD NOTES OF ACTUAL SURVEYS MADE BY ME OR UNDER MY SUPERVISION, THE LOCATION HAS BEEN CHECKED ON THE GROUND AS SHOWN ON THE PLAT, AND THAT THE SAME ARE TRUE AND CORRECT TO THE BEST OF MY KNOWLEDGE AND BELIEF.



| CO-NORTH NAD 83 (SURFACE LOCATION) | |
|--|------------------|
| LATITUDE = 39°56'04.16" (39.934490) | |
| LONGITUDE = 108°17'45.21" (108.295893) | |
| STATE PLANE COORDINATES | |
| N: = 1231342.263 | E: = 2216098.143 |
| CO-NORTH NAD 27 (SURFACE LOCATION) | |
| LATITUDE = 39°56'04.26" (39.934517) | |
| LONGITUDE = 108°17'42.90" (108.295249) | |
| STATE PLANE COORDINATES | |
| N: = 231343.033 | E: = 1216258.159 |

| FROM SURFACE LOCATION TO NEAREST: | |
|---|--|
| TOWN/COMMUNITY: 21.5 MILES NE TO MEEKER | |
| UNIT BOUNDARY: ±8238' NLY TO BOUNDARY | |
| UNIT BOUNDARY: ±5070' ELY TO BOUNDARY | |
| LEASE BOUNDARY: ±309' NLY TO BOUNDARY | |
| LEASE BOUNDARY: ±1069' ELY TO BOUNDARY | |
| EXISTING WELL: ±624' SELY TO P-1 MARATHON-FEE | |

TRI STATE LAND SURVEYING & CONSULTING

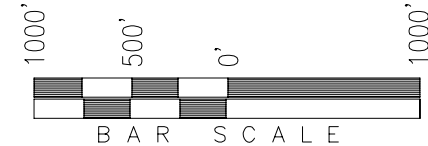
180 NORTH VERNAL AVE. - VERNAL, UTAH 84078
(435) 781-2501

| | | |
|----------------------------|-------------------|----------------------------|
| DATE SURVEYED: 02-20-09 | SURVEYED BY: D.P. | SHEET 1f OF 8 |
| DATE DRAWN: 10-08-09 | DRAWN BY: F.T.M. | |
| REVISED: | SCALE: 1" = 1000' | |

T1S, R97W, 6th P.M.

Exxon Mobil Corporation

TARGET BOTTOM HOLE, FREEDOM UNIT
197-28A6, LOCATED AS SHOWN IN THE NE
1/4 SE 1/4 OF SECTION 29, T1S, R97W, 6th
P.M. RIO BLANCO COUNTY, COLORADO.



◆ = SECTION CORNERS LOCATED



BASIS OF BEARINGS & BASIS OF ELEVATION

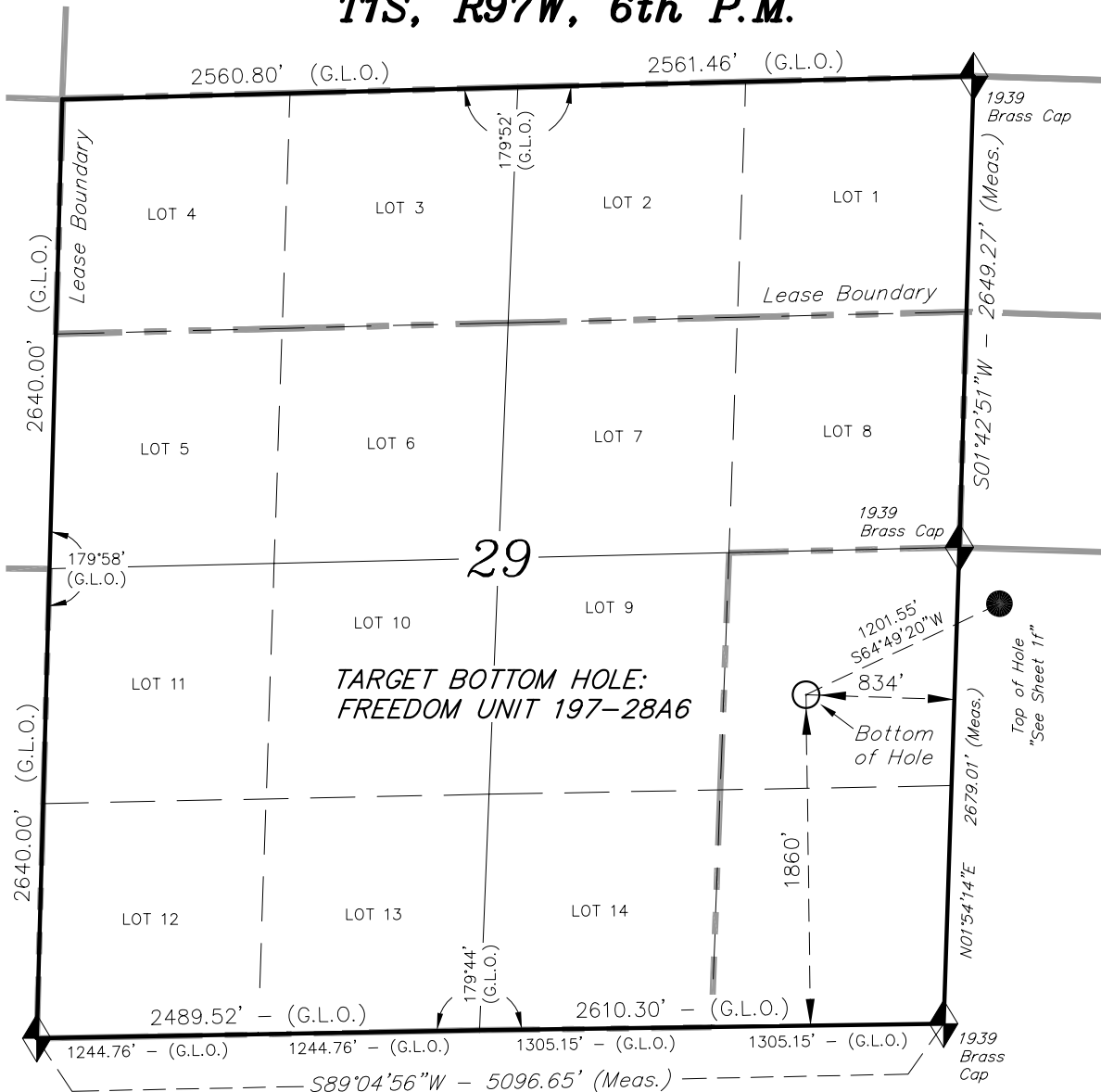
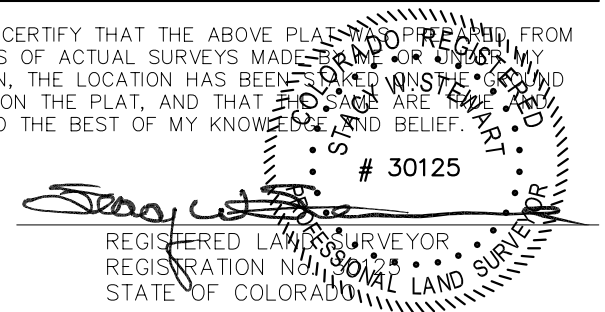
BASIS OF BEARINGS IS A LINE BETWEEN MAGNOLIA & MEYERS TRIANGULATION STATION GRID COORDINATES WHICH IS ASSUMED TO BEAR S82°36'07"E.

BASIS OF ELEVATIONS IS MAGNOLIA TRIANGULATION STATION LOCATED IN THE NW 1/4 OF SECTION 9, T2S, R96W, 6th P.M. REPORTED FROM THE NATIONAL GEODETIC SURVEY AS BEING 7529 FEET (NAVD 88). WE MEASURED IT TO BE 7526.2'

NOTES:

1. Well footages are measured at right angles to the Section Lines.
2. Bearings are based on Global Positioning Satellite observations.

THIS IS TO CERTIFY THAT THE ABOVE PLAT WAS PREPARED FROM FIELD NOTES OF ACTUAL SURVEYS MADE BY ME OR UNDER MY SUPERVISION, THE LOCATION HAS BEEN CHECKED ON THE GROUND AS SHOWN ON THE PLAT, AND THAT THE SAME ARE TRUE AND CORRECT TO THE BEST OF MY KNOWLEDGE AND BELIEF.



| CO-NORTH NAD 83 (BOTTOM HOLE) | | FROM TARGET BOTTOM HOLE TO NEAREST: | |
|--|------------------|--|--|
| LATITUDE = 39°55'58.78" (39.932993) | | UNIT BOUNDARY: NLY ±9985' TO BOUNDARY | |
| LONGITUDE = 108°17'58.96" (108.299710) | | UNIT BOUNDARY: ELY ±6456' TO BOUNDARY | |
| STATE PLANE COORDINATES | | LEASE BOUNDARY: NLY ±2074' TO BOUNDARY | |
| N: = 1230831.235 | E: = 2215010.970 | LEASE BOUNDARY: WLY ±167' TO BOUNDARY | |
| CO-NORTH NAD 27 (BOTTOM HOLE) | | | |
| LATITUDE = 39°55'58.88" (39.933021) | | | |
| LONGITUDE = 108°17'56.64" (108.299067) | | | |
| STATE PLANE COORDINATES | | | |
| N: = 230832.000 | E: = 1215171.000 | | |

TRI STATE LAND SURVEYING & CONSULTING

180 NORTH VERNAL AVE. - VERNAL, UTAH 84078
(435) 781-2501

| | | |
|----------------------------|-------------------|-----------------------------|
| DATE SURVEYED: 02-20-09 | SURVEYED BY: D.P. | SHEET 1ff OF 8 |
| DATE DRAWN: 10-08-09 | DRAWN BY: F.T.M. | |
| REVISED: | SCALE: 1" = 1000' | |