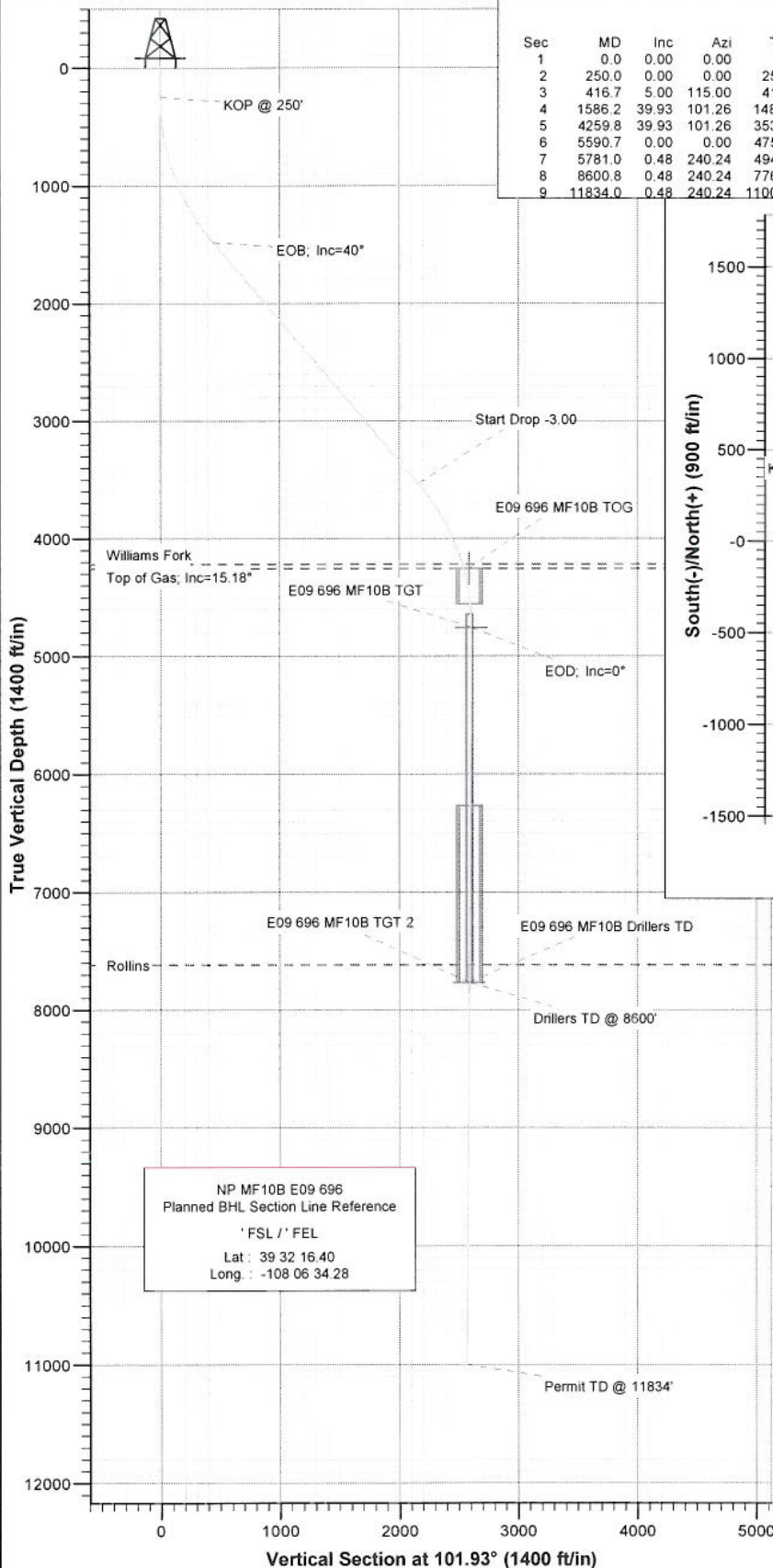
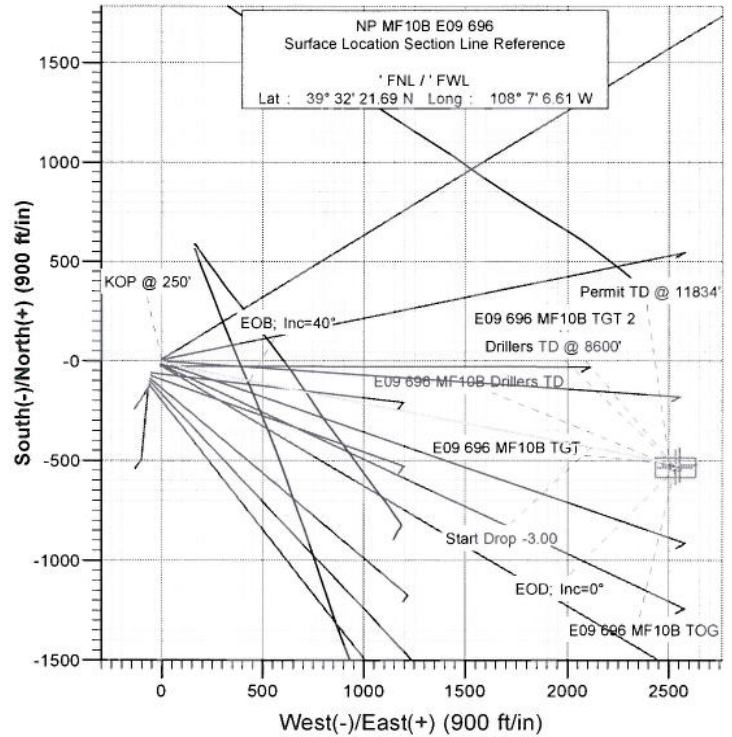




Project: North Piceance
 Site: E09 696 (SWNW S9-T6S-R96W)
 Well: NP MF10B E09 696
 Wellbore: DD
 Plan: Plan #2



SECTION DETAILS										
Sec	MD	Inc	Azi	TVD	+N/-S	+E/-W	DLeg	TFace	VSec	Target
1	0.0	0.00	0.00	0.0	0.0	0.0	0.00	0.00	0.0	
2	250.0	0.00	0.00	250.0	0.0	0.0	0.00	0.00	0.0	
3	416.7	5.00	115.00	416.5	-3.1	6.6	3.00	115.00	7.1	
4	1586.2	39.93	101.26	1480.9	-101.0	434.3	3.00	-15.38	445.8	
5	4259.8	39.93	101.26	3531.2	-436.1	2117.2	0.00	0.00	2161.6	E09 696 MF10B TGT
6	5590.7	0.00	0.00	4757.0	-523.0	2553.9	3.00	180.00	2606.9	E09 696 MF10B Drillers TD
7	5781.0	0.48	240.24	4947.3	-523.4	2553.2	0.25	240.24	2606.3	
8	8600.8	0.48	240.24	7767.0	-535.1	2532.9	0.00	0.00	2588.8	
9	11834.0	0.48	240.24	11000.0	-548.4	2509.6	0.00	0.00	2568.7	



FORMATION TOP DETAILS

TVDPath	MDPath	Formation
4217.0	5043.3	Williams Fork
4257.0	5084.8	Top of Gas; Inc=15.18°
7617.0	8450.8	Rollins



Azimuths to True North
 Magnetic North: 10.89°
 Magnetic Field
 Strength: 52668.05nT
 Dip Angle: 65.86°
 Date: 8/7/2007
 Model: IGRF200510

DESIGN DETAILS: Plan #2

Job# 75xxx; LR
 WELL @ 5772.0ft (Original Well Elev)

Target	Azimuth	Origin	Type	N/S	E/W	From	TVD
E09 696 MF10B Drillers TD	101.93	Slot		0.0	0.0		0.0

Cathedral Energy Services

Planning Report

Database: EDM 2003.21 US Multi Users DB
 Company: EnCana Oil & Gas (USA) Inc
 Project: North Piceance
 Site: E09 696 (SWNW S9-T6S-R96W)
 Well: NP MF10B E09 696
 Wellbore: DD
 Design: Plan #2

Local Co-ordinate Reference: Well NP MF10B E09 696
 TVD Reference: WELL @ 5772.0ft (Original Well Elev)
 MD Reference: WELL @ 5772.0ft (Original Well Elev)
 North Reference: True
 Survey Calculation Method: Minimum Curvature

Project North Piceance

Map System: US State Plane 1983 System Datum: Mean Sea Level
 Geo Datum: North American Datum 1983
 Map Zone: Colorado Central Zone

Site E09 696 (SWNW S9-T6S-R96W)

Site Position: Northing: 1,632,140.57 ft Latitude: 39° 32' 23.23 N
 From: Lat/Long Easting: 2,261,634.68 ft Longitude: 108° 7' 6.47 W
 Position Uncertainty: 0.0 ft Slot Radius: in Grid Convergence: -1.65 °

Well NP MF10B E09 696

Well Position +N/-S 0.0 ft Northing: 1,631,985.16 ft Latitude: 39° 32' 21.69 N
 +E/-W 0.0 ft Easting: 2,261,619.26 ft Longitude: 108° 7' 6.61 W
 Position Uncertainty 0.0 ft Wellhead Elevation: ft Ground Level: 5,756.0 ft

Wellbore DD

Magnetics	Model Name	Sample Date	Declination (°)	Dip Angle (°)	Field Strength (nT)
	IGRF200510	8/7/2007	10.89	65.86	52,668

Design Plan #2

Audit Notes:

Version: Phase: PLAN Tie On Depth: 0.0

Vertical Section:	Depth From (TVD) (ft)	+N/-S (ft)	+E/-W (ft)	Direction (°)
	0.0	0.0	0.0	101.93

Plan Sections

Measured Depth (ft)	Inclination (°)	Azimuth (°)	Vertical Depth (ft)	+N/-S (ft)	+E/-W (ft)	Dogleg Rate (°/100ft)	Build Rate (°/100ft)	Turn Rate (°/100ft)	TFO (°)	Target
0.0	0.00	0.00	0.0	0.0	0.0	0.00	0.00	0.00	0.00	
250.0	0.00	0.00	250.0	0.0	0.0	0.00	0.00	0.00	0.00	
416.7	5.00	115.00	416.5	-3.1	6.6	3.00	3.00	0.00	115.00	
1,586.2	39.93	101.26	1,480.9	-101.0	434.3	3.00	2.99	-1.17	-15.38	
4,259.8	39.93	101.26	3,531.2	-436.1	2,117.2	0.00	0.00	0.00	0.00	
5,590.7	0.00	0.00	4,757.0	-523.0	2,553.9	3.00	-3.00	0.00	180.00	E09 696 MF10B TGT
5,781.0	0.48	240.24	4,947.3	-523.4	2,553.2	0.25	0.25	-62.92	240.24	
8,600.8	0.48	240.24	7,767.0	-535.1	2,532.9	0.00	0.00	0.00	0.00	E09 696 MF10B Drille
11,834.0	0.48	240.24	11,000.0	-548.4	2,509.6	0.00	0.00	0.00	0.00	

Cathedral Energy Services

Planning Report

Database:	EDM 2003.21 US Multi Users DB	Local Co-ordinate Reference:	Well NP MF10B E09 696
Company:	EnCana Oil & Gas (USA) Inc	TVD Reference:	WELL @ 5772.0ft (Original Well Elev)
Project:	North Piceance	MD Reference:	WELL @ 5772.0ft (Original Well Elev)
Site:	E09 696 (SWNW S9-T6S-R96W)	North Reference:	True
Well:	NP MF10B E09 696	Survey Calculation Method:	Minimum Curvature
Wellbore:	DD		
Design:	Plan #2		

Planned Survey

Measured Depth (ft)	Inclination (°)	Azimuth (°)	Vertical Depth (ft)	+N/-S (ft)	+E/-W (ft)	Vertical Section (ft)	Dogleg Rate (°/100ft)	Build Rate (°/100ft)	Comments / Formations
0.0	0.00	0.00	0.0	0.0	0.0	0.0	0.00	0.00	
30.0	0.00	0.00	30.0	0.0	0.0	0.0	0.00	0.00	
60.0	0.00	0.00	60.0	0.0	0.0	0.0	0.00	0.00	
90.0	0.00	0.00	90.0	0.0	0.0	0.0	0.00	0.00	
120.0	0.00	0.00	120.0	0.0	0.0	0.0	0.00	0.00	
150.0	0.00	0.00	150.0	0.0	0.0	0.0	0.00	0.00	
180.0	0.00	0.00	180.0	0.0	0.0	0.0	0.00	0.00	
210.0	0.00	0.00	210.0	0.0	0.0	0.0	0.00	0.00	
240.0	0.00	0.00	240.0	0.0	0.0	0.0	0.00	0.00	
250.0	0.00	0.00	250.0	0.0	0.0	0.0	0.00	0.00	KOP @ 250'
270.0	0.60	115.00	270.0	0.0	0.1	0.1	3.00	3.00	
300.0	1.50	115.00	300.0	-0.3	0.6	0.6	3.00	3.00	
330.0	2.40	115.00	330.0	-0.7	1.5	1.6	3.00	3.00	
360.0	3.30	115.00	359.9	-1.3	2.9	3.1	3.00	3.00	
390.0	4.20	115.00	389.9	-2.2	4.6	5.0	3.00	3.00	
416.7	5.00	115.00	416.5	-3.1	6.6	7.1	3.00	3.00	
420.0	5.10	114.70	419.8	-3.2	6.9	7.4	3.00	2.89	
450.0	5.97	112.45	449.6	-4.3	9.5	10.2	3.00	2.91	
480.0	6.85	110.77	479.4	-5.6	12.6	13.5	3.00	2.93	
510.0	7.74	109.48	509.2	-6.9	16.2	17.3	3.00	2.95	
540.0	8.62	108.45	538.9	-8.3	20.2	21.5	3.00	2.96	
570.0	9.51	107.61	568.5	-9.7	24.7	26.2	3.00	2.97	
600.0	10.41	106.91	598.1	-11.3	29.7	31.4	3.00	2.97	
630.0	11.30	106.32	627.5	-12.9	35.1	37.0	3.00	2.98	
660.0	12.19	105.82	656.9	-14.6	41.0	43.1	3.00	2.98	
690.0	13.09	105.39	686.2	-16.3	47.3	49.6	3.00	2.98	
720.0	13.98	105.01	715.3	-18.2	54.1	56.7	3.00	2.99	
750.0	14.88	104.67	744.4	-20.1	61.3	64.1	3.00	2.99	
780.0	15.78	104.37	773.3	-22.1	69.0	72.0	3.00	2.99	
810.0	16.67	104.11	802.1	-24.1	77.1	80.4	3.00	2.99	
840.0	17.57	103.87	830.8	-26.3	85.7	89.2	3.00	2.99	
870.0	18.47	103.65	859.3	-28.5	94.7	98.5	3.00	2.99	
900.0	19.37	103.45	887.7	-30.8	104.1	108.2	3.00	2.99	
930.0	20.26	103.27	915.9	-33.1	114.0	118.4	3.00	2.99	
960.0	21.16	103.10	944.0	-35.5	124.4	129.0	3.00	2.99	
990.0	22.06	102.95	971.9	-38.0	135.1	140.1	3.00	2.99	
1,020.0	22.96	102.81	999.6	-40.6	146.3	151.5	3.00	2.99	
1,050.0	23.86	102.68	1,027.1	-43.2	157.9	163.5	3.00	2.99	
1,080.0	24.76	102.55	1,054.5	-45.9	170.0	175.8	3.00	3.00	
1,110.0	25.65	102.44	1,081.6	-48.7	182.5	188.6	3.00	3.00	
1,140.0	26.55	102.33	1,108.6	-51.5	195.4	201.8	3.00	3.00	
1,170.0	27.45	102.23	1,135.3	-54.4	208.7	215.4	3.00	3.00	
1,200.0	28.35	102.13	1,161.8	-57.4	222.4	229.4	3.00	3.00	
1,230.0	29.25	102.04	1,188.1	-60.4	236.5	243.9	3.00	3.00	
1,260.0	30.15	101.96	1,214.1	-63.5	251.1	258.8	3.00	3.00	
1,290.0	31.05	101.88	1,240.0	-66.6	266.0	274.0	3.00	3.00	
1,320.0	31.95	101.80	1,265.6	-69.8	281.3	289.7	3.00	3.00	
1,350.0	32.85	101.73	1,290.9	-73.1	297.1	305.8	3.00	3.00	
1,380.0	33.74	101.66	1,316.0	-76.5	313.2	322.2	3.00	3.00	
1,410.0	34.64	101.60	1,340.8	-79.9	329.7	339.1	3.00	3.00	
1,440.0	35.54	101.53	1,365.3	-83.3	346.6	356.3	3.00	3.00	
1,470.0	36.44	101.47	1,389.6	-86.8	363.9	374.0	3.00	3.00	

Cathedral Energy Services

Planning Report

Database:	EDM 2003.21 US Multi Users DB	Local Co-ordinate Reference:	Well NP MF10B E09 696
Company:	EnCana Oil & Gas (USA) Inc	TVD Reference:	WELL @ 5772.0ft (Original Well Elev)
Project:	North Piceance	MD Reference:	WELL @ 5772.0ft (Original Well Elev)
Site:	E09 696 (SWNW S9-T6S-R96W)	North Reference:	True
Well:	NP MF10B E09 696	Survey Calculation Method:	Minimum Curvature
Wellbore:	DD		
Design:	Plan #2		

Planned Survey

Measured Depth (ft)	Inclination (°)	Azimuth (°)	Vertical Depth (ft)	+N/-S (ft)	+E/-W (ft)	Vertical Section (ft)	Dogleg Rate (°/100ft)	Build Rate (°/100ft)	Comments / Formations
1,500.0	37.34	101.42	1,413.6	-90.4	381.5	392.0	3.00	3.00	
1,530.0	38.24	101.36	1,437.3	-94.0	399.6	410.4	3.00	3.00	
1,560.0	39.14	101.31	1,460.7	-97.7	417.9	429.1	3.00	3.00	
1,586.2	39.93	101.26	1,480.9	-101.0	434.3	445.8	3.00	3.00	EOB; Inc=40°
1,590.0	39.93	101.26	1,483.8	-101.5	436.7	448.2	0.01	0.01	
1,620.0	39.93	101.26	1,506.8	-105.2	455.6	467.5	0.00	0.00	
1,650.0	39.93	101.26	1,529.8	-109.0	474.5	486.7	0.00	0.00	
1,680.0	39.93	101.26	1,552.8	-112.7	493.3	506.0	0.00	0.00	
1,710.0	39.93	101.26	1,575.9	-116.5	512.2	525.2	0.00	0.00	
1,740.0	39.93	101.26	1,598.9	-120.3	531.1	544.5	0.00	0.00	
1,770.0	39.93	101.26	1,621.9	-124.0	550.0	563.8	0.00	0.00	
1,800.0	39.93	101.26	1,644.9	-127.8	568.9	583.0	0.00	0.00	
1,830.0	39.93	101.26	1,667.9	-131.5	587.8	602.3	0.00	0.00	
1,860.0	39.93	101.26	1,690.9	-135.3	606.6	621.5	0.00	0.00	
1,890.0	39.93	101.26	1,713.9	-139.1	625.5	640.8	0.00	0.00	
1,920.0	39.93	101.26	1,736.9	-142.8	644.4	660.0	0.00	0.00	
1,950.0	39.93	101.26	1,759.9	-146.6	663.3	679.3	0.00	0.00	
1,980.0	39.93	101.26	1,782.9	-150.3	682.2	698.5	0.00	0.00	
2,010.0	39.93	101.26	1,805.9	-154.1	701.1	717.8	0.00	0.00	
2,040.0	39.93	101.26	1,828.9	-157.9	719.9	737.0	0.00	0.00	
2,070.0	39.93	101.26	1,851.9	-161.6	738.8	756.3	0.00	0.00	
2,100.0	39.93	101.26	1,874.9	-165.4	757.7	775.5	0.00	0.00	
2,130.0	39.93	101.26	1,897.9	-169.1	776.6	794.8	0.00	0.00	
2,160.0	39.93	101.26	1,920.9	-172.9	795.5	814.0	0.00	0.00	
2,190.0	39.93	101.26	1,943.9	-176.7	814.4	833.3	0.00	0.00	
2,220.0	39.93	101.26	1,967.0	-180.4	833.2	852.5	0.00	0.00	
2,250.0	39.93	101.26	1,990.0	-184.2	852.1	871.8	0.00	0.00	
2,280.0	39.93	101.26	2,013.0	-187.9	871.0	891.1	0.00	0.00	
2,310.0	39.93	101.26	2,036.0	-191.7	889.9	910.3	0.00	0.00	
2,340.0	39.93	101.26	2,059.0	-195.5	908.8	929.6	0.00	0.00	
2,370.0	39.93	101.26	2,082.0	-199.2	927.7	948.8	0.00	0.00	
2,400.0	39.93	101.26	2,105.0	-203.0	946.5	968.1	0.00	0.00	
2,430.0	39.93	101.26	2,128.0	-206.7	965.4	987.3	0.00	0.00	
2,460.0	39.93	101.26	2,151.0	-210.5	984.3	1,006.6	0.00	0.00	
2,490.0	39.93	101.26	2,174.0	-214.3	1,003.2	1,025.8	0.00	0.00	

Cathedral Energy Services

Planning Report

Database:	EDM 2003.21 US Multi Users DB	Local Co-ordinate Reference:	Well NP MF10B E09 696
Company:	EnCana Oil & Gas (USA) Inc	TVD Reference:	WELL @ 5772.0ft (Original Well Elev)
Project:	North Piceance	MD Reference:	WELL @ 5772.0ft (Original Well Elev)
Site:	E09 696 (SWNW S9-T6S-R96W)	North Reference:	True
Well:	NP MF10B E09 696	Survey Calculation Method:	Minimum Curvature
Wellbore:	DD		
Design:	Plan #2		

Planned Survey

Measured Depth (ft)	Inclination (°)	Azimuth (°)	Vertical Depth (ft)	+N/-S (ft)	+E/-W (ft)	Vertical Section (ft)	Dogleg Rate (°/100ft)	Build Rate (°/100ft)	Comments / Formations
2,500.0	39.93	101.26	2,181.7	-215.5	1,009.5	1,032.2	0.00	0.00	
2,600.0	39.93	101.26	2,258.4	-228.1	1,072.4	1,096.4	0.00	0.00	
2,700.0	39.93	101.26	2,335.1	-240.6	1,135.4	1,160.6	0.00	0.00	
2,800.0	39.93	101.26	2,411.7	-253.1	1,198.3	1,224.8	0.00	0.00	
2,900.0	39.93	101.26	2,488.4	-265.7	1,261.3	1,288.9	0.00	0.00	
3,000.0	39.93	101.26	2,565.1	-278.2	1,324.2	1,353.1	0.00	0.00	
3,100.0	39.93	101.26	2,641.8	-290.7	1,387.2	1,417.3	0.00	0.00	
3,200.0	39.93	101.26	2,718.5	-303.3	1,450.1	1,481.5	0.00	0.00	
3,300.0	39.93	101.26	2,795.2	-315.8	1,513.0	1,545.6	0.00	0.00	
3,400.0	39.93	101.26	2,871.9	-328.3	1,576.0	1,609.8	0.00	0.00	
3,500.0	39.93	101.26	2,948.5	-340.9	1,638.9	1,674.0	0.00	0.00	
3,600.0	39.93	101.26	3,025.2	-353.4	1,701.9	1,738.2	0.00	0.00	
3,700.0	39.93	101.26	3,101.9	-365.9	1,764.8	1,802.4	0.00	0.00	
3,800.0	39.93	101.26	3,178.6	-378.5	1,827.8	1,866.5	0.00	0.00	
3,900.0	39.93	101.26	3,255.3	-391.0	1,890.7	1,930.7	0.00	0.00	
4,000.0	39.93	101.26	3,332.0	-403.5	1,953.7	1,994.9	0.00	0.00	
4,100.0	39.93	101.26	3,408.7	-416.1	2,016.6	2,059.1	0.00	0.00	
4,200.0	39.93	101.26	3,485.4	-428.6	2,079.5	2,123.2	0.00	0.00	
4,259.8	39.93	101.26	3,531.2	-436.1	2,117.2	2,161.6	0.00	0.00	Start Drop -3.00
4,300.0	38.72	101.26	3,562.3	-441.1	2,142.2	2,187.1	3.00	-3.00	
4,400.0	35.72	101.26	3,641.9	-452.9	2,201.5	2,247.6	3.00	-3.00	
4,500.0	32.72	101.26	3,724.6	-463.9	2,256.6	2,303.8	3.00	-3.00	
4,600.0	29.72	101.26	3,810.1	-474.0	2,307.5	2,355.6	3.00	-3.00	
4,700.0	26.72	101.26	3,898.2	-483.2	2,353.8	2,402.9	3.00	-3.00	
4,800.0	23.72	101.26	3,988.7	-491.5	2,395.6	2,445.5	3.00	-3.00	
4,900.0	20.72	101.26	4,081.2	-498.9	2,432.7	2,483.3	3.00	-3.00	
5,000.0	17.72	101.26	4,175.6	-505.3	2,465.0	2,516.2	3.00	-3.00	
5,043.3	16.42	101.26	4,217.0	-507.8	2,477.5	2,528.9	3.00	-3.00	Williams Fork
5,084.8	15.18	101.26	4,257.0	-510.0	2,488.6	2,540.2	3.00	-3.00	Top of Gas; Inc=15.18°
5,097.3	14.80	101.26	4,269.0	-510.7	2,491.7	2,543.5	3.00	-3.00	E09 696 MF10B TOG
5,100.0	14.72	101.26	4,271.7	-510.8	2,492.4	2,544.2	3.00	-3.00	
5,200.0	11.72	101.26	4,369.0	-515.3	2,514.8	2,567.0	3.00	-3.00	
5,300.0	8.72	101.26	4,467.4	-518.7	2,532.2	2,584.8	3.00	-3.00	
5,400.0	5.72	101.26	4,566.6	-521.2	2,544.6	2,597.3	3.00	-3.00	
5,500.0	2.72	101.26	4,666.3	-522.6	2,551.8	2,604.7	3.00	-3.00	
5,590.7	0.00	101.26	4,757.0	-523.0	2,553.9	2,606.9	3.00	-3.00	EOD; Inc=0° - E09 696 MF10B TGT
5,600.0	0.02	240.24	4,766.3	-523.0	2,553.9	2,606.9	0.26	0.24	
5,700.0	0.27	240.24	4,866.3	-523.2	2,553.7	2,606.7	0.25	0.25	
5,781.0	0.48	240.24	4,947.3	-523.4	2,553.2	2,606.3	0.25	0.25	
5,800.0	0.48	240.24	4,966.3	-523.5	2,553.1	2,606.1	0.00	0.00	
5,900.0	0.48	240.24	5,066.3	-523.9	2,552.3	2,605.5	0.00	0.00	
6,000.0	0.48	240.24	5,166.3	-524.3	2,551.6	2,604.9	0.00	0.00	
6,100.0	0.48	240.24	5,266.3	-524.8	2,550.9	2,604.3	0.00	0.00	
6,200.0	0.48	240.24	5,366.3	-525.2	2,550.2	2,603.7	0.00	0.00	
6,300.0	0.48	240.24	5,466.3	-525.6	2,549.5	2,603.0	0.00	0.00	
6,400.0	0.48	240.24	5,566.3	-526.0	2,548.7	2,602.4	0.00	0.00	
6,500.0	0.48	240.24	5,666.2	-526.4	2,548.0	2,601.8	0.00	0.00	
6,600.0	0.48	240.24	5,766.2	-526.8	2,547.3	2,601.2	0.00	0.00	
6,700.0	0.48	240.24	5,866.2	-527.2	2,546.6	2,600.6	0.00	0.00	
6,800.0	0.48	240.24	5,966.2	-527.6	2,545.9	2,599.9	0.00	0.00	
6,900.0	0.48	240.24	6,066.2	-528.1	2,545.1	2,599.3	0.00	0.00	
7,000.0	0.48	240.24	6,166.2	-528.5	2,544.4	2,598.7	0.00	0.00	

Cathedral Energy Services

Planning Report

Database: EDM 2003.21 US Multi Users DB
 Company: EnCana Oil & Gas (USA) Inc
 Project: North Piceance
 Site: E09 696 (SWNW S9-T6S-R96W)
 Well: NP MF10B E09 696
 Wellbore: DD
 Design: Plan #2

Local Co-ordinate Reference: Well NP MF10B E09 696
 TVD Reference: WELL @ 5772.0ft (Original Well Elev)
 MD Reference: WELL @ 5772.0ft (Original Well Elev)
 North Reference: True
 Survey Calculation Method: Minimum Curvature

Planned Survey

Measured Depth (ft)	Inclination (°)	Azimuth (°)	Vertical Depth (ft)	+N/-S (ft)	+E/-W (ft)	Vertical Section (ft)	Dogleg Rate (°/100ft)	Build Rate (°/100ft)	Comments / Formations
7,100.0	0.48	240.24	6,266.2	-528.9	2,543.7	2,598.1	0.00	0.00	
7,200.0	0.48	240.24	6,366.2	-529.3	2,543.0	2,597.5	0.00	0.00	
7,300.0	0.48	240.24	6,466.2	-529.7	2,542.3	2,596.8	0.00	0.00	
7,400.0	0.48	240.24	6,566.2	-530.1	2,541.5	2,596.2	0.00	0.00	
7,500.0	0.48	240.24	6,666.2	-530.5	2,540.8	2,595.6	0.00	0.00	
7,600.0	0.48	240.24	6,766.2	-530.9	2,540.1	2,595.0	0.00	0.00	
7,700.0	0.48	240.24	6,866.2	-531.4	2,539.4	2,594.4	0.00	0.00	
7,800.0	0.48	240.24	6,966.2	-531.8	2,538.6	2,593.7	0.00	0.00	
7,900.0	0.48	240.24	7,066.2	-532.2	2,537.9	2,593.1	0.00	0.00	
8,000.0	0.48	240.24	7,166.2	-532.6	2,537.2	2,592.5	0.00	0.00	
8,100.0	0.48	240.24	7,266.2	-533.0	2,536.5	2,591.9	0.00	0.00	
8,200.0	0.48	240.24	7,366.2	-533.4	2,535.8	2,591.3	0.00	0.00	
8,300.0	0.48	240.24	7,466.2	-533.8	2,535.0	2,590.6	0.00	0.00	
8,400.0	0.48	240.24	7,566.2	-534.2	2,534.3	2,590.0	0.00	0.00	
8,450.8	0.48	240.24	7,617.0	-534.4	2,534.0	2,589.7	0.00	0.00	Rollins
8,500.0	0.48	240.24	7,666.2	-534.6	2,533.6	2,589.4	0.00	0.00	
8,600.0	0.48	240.24	7,766.2	-535.1	2,532.9	2,588.8	0.00	0.00	
8,600.8	0.48	240.24	7,767.0	-535.1	2,532.9	2,588.8	0.00	0.00	Drillers TD @ 8600' - E09 696 MF10B TGT 2 - I
8,700.0	0.48	240.24	7,866.2	-535.5	2,532.2	2,588.2	0.00	0.00	
8,800.0	0.48	240.24	7,966.2	-535.9	2,531.4	2,587.5	0.00	0.00	
8,900.0	0.48	240.24	8,066.2	-536.3	2,530.7	2,586.9	0.00	0.00	
9,000.0	0.48	240.24	8,166.2	-536.7	2,530.0	2,586.3	0.00	0.00	
9,100.0	0.48	240.24	8,266.2	-537.1	2,529.3	2,585.7	0.00	0.00	
9,200.0	0.48	240.24	8,366.2	-537.5	2,528.6	2,585.1	0.00	0.00	
9,300.0	0.48	240.24	8,466.2	-537.9	2,527.8	2,584.4	0.00	0.00	
9,400.0	0.48	240.24	8,566.1	-538.4	2,527.1	2,583.8	0.00	0.00	
9,500.0	0.48	240.24	8,666.1	-538.8	2,526.4	2,583.2	0.00	0.00	
9,600.0	0.48	240.24	8,766.1	-539.2	2,525.7	2,582.6	0.00	0.00	
9,700.0	0.48	240.24	8,866.1	-539.6	2,525.0	2,582.0	0.00	0.00	
9,800.0	0.48	240.24	8,966.1	-540.0	2,524.2	2,581.3	0.00	0.00	
9,900.0	0.48	240.24	9,066.1	-540.4	2,523.5	2,580.7	0.00	0.00	
10,000.0	0.48	240.24	9,166.1	-540.8	2,522.8	2,580.1	0.00	0.00	
10,100.0	0.48	240.24	9,266.1	-541.2	2,522.1	2,579.5	0.00	0.00	
10,200.0	0.48	240.24	9,366.1	-541.7	2,521.3	2,578.9	0.00	0.00	
10,300.0	0.48	240.24	9,466.1	-542.1	2,520.6	2,578.2	0.00	0.00	
10,400.0	0.48	240.24	9,566.1	-542.5	2,519.9	2,577.6	0.00	0.00	
10,500.0	0.48	240.24	9,666.1	-542.9	2,519.2	2,577.0	0.00	0.00	
10,600.0	0.48	240.24	9,766.1	-543.3	2,518.5	2,576.4	0.00	0.00	
10,700.0	0.48	240.24	9,866.1	-543.7	2,517.7	2,575.8	0.00	0.00	
10,800.0	0.48	240.24	9,966.1	-544.1	2,517.0	2,575.1	0.00	0.00	
10,900.0	0.48	240.24	10,066.1	-544.5	2,516.3	2,574.5	0.00	0.00	
11,000.0	0.48	240.24	10,166.1	-545.0	2,515.6	2,573.9	0.00	0.00	
11,100.0	0.48	240.24	10,266.1	-545.4	2,514.9	2,573.3	0.00	0.00	
11,200.0	0.48	240.24	10,366.1	-545.8	2,514.1	2,572.7	0.00	0.00	
11,300.0	0.48	240.24	10,466.1	-546.2	2,513.4	2,572.0	0.00	0.00	
11,400.0	0.48	240.24	10,566.1	-546.6	2,512.7	2,571.4	0.00	0.00	
11,500.0	0.48	240.24	10,666.1	-547.0	2,512.0	2,570.8	0.00	0.00	
11,600.0	0.48	240.24	10,766.1	-547.4	2,511.3	2,570.2	0.00	0.00	
11,700.0	0.48	240.24	10,866.1	-547.8	2,510.5	2,569.6	0.00	0.00	
11,800.0	0.48	240.24	10,966.1	-548.2	2,509.8	2,568.9	0.00	0.00	
11,834.0	0.48	240.24	11,000.0	-548.4	2,509.6	2,568.7	0.00	0.00	

Cathedral Energy Services

Planning Report

Database:	EDM 2003.21 US Multi Users DB	Local Co-ordinate Reference:	Well NP MF10B E09 696
Company:	EnCana Oil & Gas (USA) Inc	TVD Reference:	WELL @ 5772.0ft (Original Well Elev)
Project:	North Piceance	MD Reference:	WELL @ 5772.0ft (Original Well Elev)
Site:	E09 696 (SWNW S9-T6S-R96W)	North Reference:	True
Well:	NP MF10B E09 696	Survey Calculation Method:	Minimum Curvature
Wellbore:	DD		
Design:	Plan #2		

Targets									
Target Name	Dip Angle	Dip Dir.	TVD	+N/-S	+E/-W	Northing	Easting	Latitude	Longitude
- hit/miss target	(°)	(°)	(ft)	(ft)	(ft)	(ft)	(ft)		
- Shape									
E09 696 MF10B TGT	0.00	0.00	4,757.0	-523.0	2,553.9	1,631,388.73	2,264,157.02	39° 32' 16.52 N	108° 6' 34.01 W
- plan hits target center									
- Point									
E09 696 MF10B TGT 2	0.00	0.00	7,767.0	-535.1	2,532.9	1,631,377.33	2,264,135.67	39° 32' 16.40 N	108° 6' 34.28 W
- plan hits target center									
- Rectangle (sides W100.0 H200.0 D0.0)									
E09 696 MF10B Drillers	0.00	0.00	7,767.0	-535.1	2,532.9	1,631,377.33	2,264,135.67	39° 32' 16.40 N	108° 6' 34.28 W
- plan hits target center									
- Rectangle (sides W30.0 H50.0 D0.0)									
E09 696 MF10B TOG	0.00	0.00	4,257.0	-535.1	2,532.9	1,631,377.33	2,264,135.67	39° 32' 16.40 N	108° 6' 34.28 W
- plan misses target center by 49.3ft at 5097.3ft MD (4269.0 TVD, -510.7 N, 2491.7 E)									
- Rectangle (sides W100.0 H200.0 D300.0)									

Formations					
Measured Depth	Vertical Depth	Name	Lithology	Dip	Dip Direction
(ft)	(ft)			(°)	(°)
5,043.3	4,217.0	Williams Fork		0.00	
5,084.8	4,257.0	Top of Gas; Inc=15.18°		0.00	
8,450.8	7,617.0	Rollins		0.00	

Plan Annotations					
Measured Depth	Vertical Depth	Local Coordinates			
(ft)	(ft)	+N/-S (ft)	+E/-W (ft)	Comment	
250.0	250.0	0.0	0.0	KOP @ 250'	
1,586.2	1,480.9	-101.0	434.3	EOB; Inc=40°	
4,259.8	3,531.2	-436.1	2,117.2	Start Drop -3.00	
5,590.7	4,757.0	-523.0	2,553.9	EOD; Inc=0°	
8,600.8	7,767.0	-535.1	2,532.9	Drillers TD @ 8600'	
11,834.0	11,000.1	-548.4	2,509.6	Permit TD @ 11834'	