

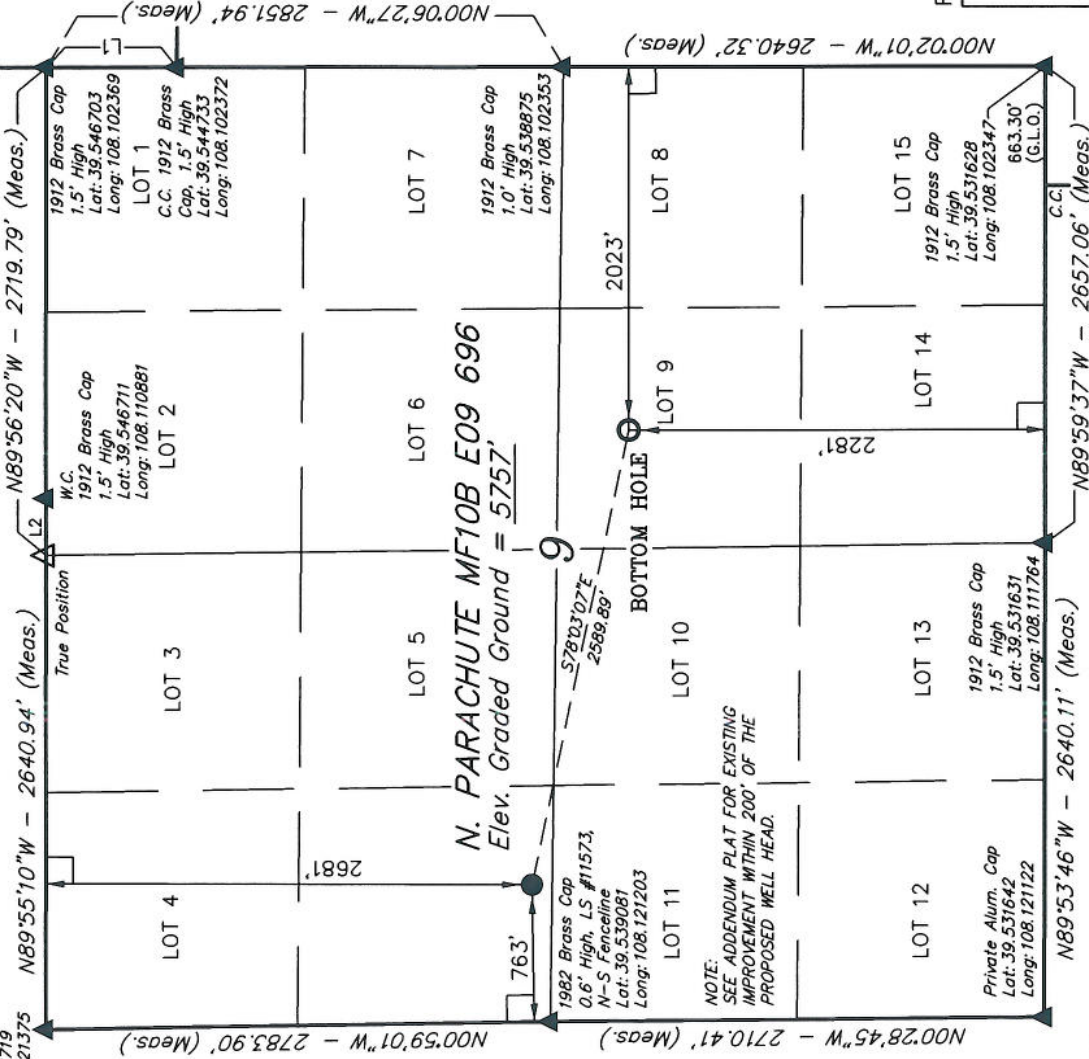
EnCana Oil & Gas (USA) INC.

Well location, N. PARACHUTE MF10B E09 696, located as shown in the SW 1/4 NW 1/4 of Section 9, T6S, R96W, 6th P.M., Garfield County, Colorado.

T6S, R96W, 6th P.M.

LINE TABLE		
LINE	BEARING	LENGTH
L1	N00°02'02"E	718.08'
L2	N89°56'20"W	319.44'

1912 Brass Cap, 0.4' High, E-W Fenceline, Pile of Stones
Lat: 39.546719
Long: 108.121375

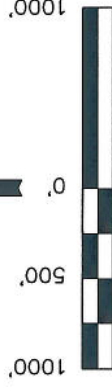


BASIS OF ELEVATION

SPOT ELEVATION AT THE NORTHWEST CORNER OF SECTION 30, T5S, R95W, 6th P.M. TAKEN FROM THE FORKED GULCH QUADRANGLE, COLORADO, GARFIELD COUNTY, 7.5 MINUTE SERIES (TOPOGRAPHICAL MAP) PUBLISHED BY THE UNITED STATES DEPARTMENT OF THE INTERIOR, GEOLOGICAL SURVEY. SAID ELEVATION IS MARKED AS BEING 5966 FEET.

BASIS OF BEARINGS

BASIS OF BEARINGS IS A G.P.S. OBSERVATION.



SCALE

CERTIFICATE

THIS IS TO CERTIFY THAT THE ABOVE PLAT WAS PREPARED FROM FIELD NOTES OF ACTUAL SURVEYS MADE BY ME OR UNDER MY SUPERVISION AND THAT THE SAME ARE TRUE AND CORRECT TO THE BEST OF MY KNOWLEDGE AND BELIEF.

REGISTERED LAND SURVEYOR
STATE OF COLORADO
REGISTRATION NO. 17493
J. D. [Signature]

Revised: 12-24-08 D.R.B.

UNTAH ENGINEERING & LAND SURVEYING
85 SOUTH 200 EAST - VERNAL, UTAH 84078
(435) 789-1017

LEGEND:

- = 90° SYMBOL
- = PROPOSED WELL HEAD.
- ▲ = SECTION CORNERS LOCATED.

SCALE 1" = 1000'

PDOP = 5.6

NAD 83 (TARGET BOTTOM HOLE)	NAD 83 (SURFACE LOCATION)
LATITUDE = 39°32'16.40" (39.537889)	LATITUDE = 39°32'21.70" (39.539361)
LONGITUDE = 108°06'34.28" (108.109522)	LONGITUDE = 108°07'06.61" (108.118503)
NAD 27 (TARGET BOTTOM HOLE)	NAD 27 (SURFACE LOCATION)
LATITUDE = 39°32'16.48" (39.537911)	LATITUDE = 39°32'21.78" (39.539383)
LONGITUDE = 108°06'32.00" (108.108889)	LONGITUDE = 108°07'04.33" (108.117869)

PARTY B.H. F.Y. D.R.B.

WEATHER COOL

REFERENCES G.L.O. PLAT

DATE SURVEYED: 09-18-06

DATE DRAWN: 06-11-07

FILE EnCana OIL & GAS (USA) INC.