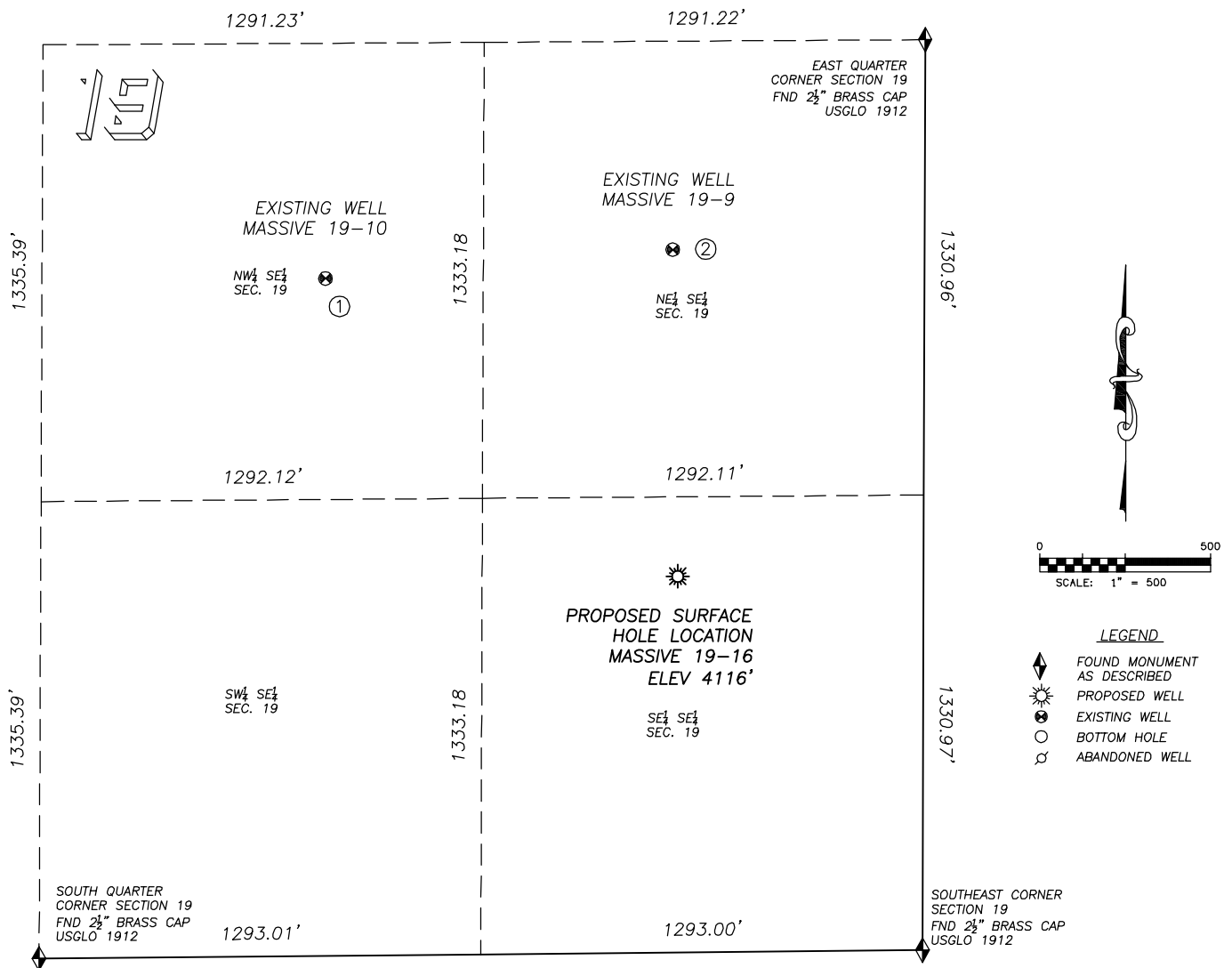


SITE SKETCH MASSIVE 19-16

SECTION 19, TOWNSHIP 2 SOUTH, RANGE 46 WEST OF THE 6TH PRINCIPAL MERIDIAN



①

MASSIVE 19-10

NW/SE SEC. 19
2002' FSL, 1752' FEL
1350' NW OF PROPOSED
SURFACE HOLE LOCATION
LAT. N39.86619"
LONG. W102.56406"
EL: 4110'
PDOP 1.3

②

MASSIVE 19-9

NE/SE SEC. 19
2055' FSL, 737' FEL
955' N OF PROPOSED
SURFACE HOLE LOCATION
LAT. N39.86636"
LONG. W102.56045"
EL: 4124'
PDOP 1.3

NOTES:

1. THIS DOES NOT REPRESENT A BOUNDARY SURVEY
2. THE LATITUDES AND LONGITUDES SHOWN ARE REFERENCED TO NAD83
3. DATUM FOR ELEVATION IS NAVD88. ELEVATIONS ARE DERIVED FROM GPS-RTK OBSERVATIONS PROCESSED THROUGH OPUS, UTILIZING THE GEOID03 MODEL.