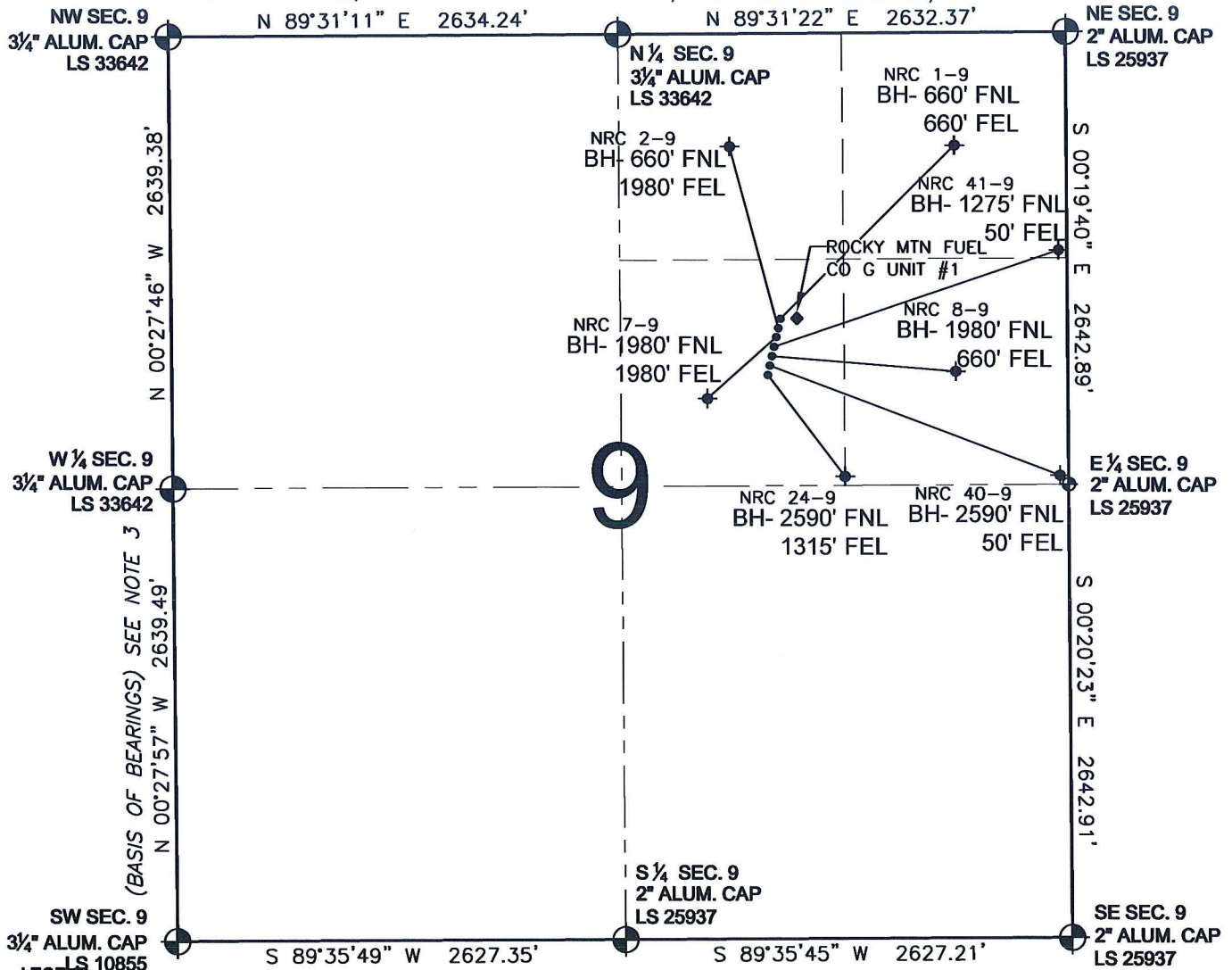


PAD DRAWING - NRC 7 PAD

SECTION 9, TOWNSHIP 1 NORTH, RANGE 67 WEST, 6TH P.M.



LEGEND

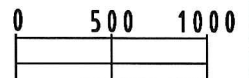
- ⊕ = EXISTING MONUMENT
- ⬢ = BOTTOM HOLE
- BH= BOTTOM HOLE
- = PROPOSED WELL
- ◆ = EXISTING WELL

NOTES:

- THIS SURVEY WAS DONE BY GPS METHODS AND CONFORMS TO THE MINIMUM STANDARDS SET BY THE C.O.G.C.C., RULE NO. 215 (PDOP VALUE IS LESS THAN 6.0, LATITUDE AND LONGITUDE ARE ACCURATE TO 5 DECIMAL PLACES, AND GPS OBSERVATIONS ARE DIFFERENTIAL AND DONE BY QUALIFIED PERSONNEL.)
- ELEVATIONS SHOWN AT THE WELL HEAD, AS WELL AS HORIZONTAL CONTROL, ARE BASED ON GPS-RTK VALUES DERIVED FROM DOING 2-HOUR STATIC GPS SESSIONS AND REDUCTIONS USING O.P.U.S. SOLUTIONS.
VERTICAL = NAVD88; HORIZONTAL = NAD83/92
- THE BEARINGS SHOWN HEREON ARE BASED ON GPS OBSERVATIONS BETWEEN THE MONUMENTS SHOWN HEREON AS FOUND ON THE FIELD DATE BELOW.
- DISTANCES SHOWN ARE AT GROUND LEVEL, AS MEASURED IN THE FIELD, WITH TIES TO WELLS MEASURED AT A PERPENDICULAR TO SECTION LINES.

NOTES:

NRC 1-9 TO BE AT 1667' FNL, 1689' FEL.
 BOTTOM HOLE AT 660' FNL & 660' FEL.
 NRC 2-9 TO BE AT 1683' FNL, 1693' FEL.
 BOTTOM HOLE AT 660' FNL & 1980' FEL.
 NRC 7-9 TO BE AT 1699' FNL, 1696' FEL.
 BOTTOM HOLE AT 1980' FNL & 1980' FEL.
 NRC 41-9 TO BE AT 1714' FNL, 1700' FEL.
 BOTTOM HOLE AT 1275' FNL & 50' FEL.
 NRC 8-9 TO BE AT 1730' FNL, 1703' FEL.
 BOTTOM HOLE AT 1980' FNL & 660' FEL.
 NRC 40-9 TO BE AT 1745' FNL, 1707' FEL.
 BOTTOM HOLE AT 2590' FNL & 50' FEL.
 NRC 24-9 TO BE AT 1761' FNL, 1711' FEL.
 BOTTOM HOLE AT 2590' FNL & 1315' FEL.
 ROCKY MTN FUEL CO G UNIT #1 IS 1667' FNL, 1640' FEL.



SCALE: 1"=1000'

REVISIONS

INITIAL	DATE

PREPARED BY:

PFS

Petroleum Field Services, LLC
 1801 W. 13th Ave.
 Denver, CO 80204



KERR-MCGEE OIL & GAS ONSHORE LP

FIELD DATE:
12-10-09

PAD NAME:
NRC 7 PAD

DRAWING DATE:
12-11-09

SURFACE LOCATION:

BY:
SMF

WELD COUNTY, COLORADO
 SW 1/4 NE 1/4, SEC. 9, T1N, R67W