



US ROCKIES REGION PLANNING

COLORADO NORTHERN ZONE - 83

WELD_NRC 17-9 PAD

P_NRC 1-9

P_NRC 1-9

Plan: PLAN #1 1-5-10 RHS

Standard Planning Report

04 February, 2010





Azimuths to True North
Magnetic North: 9.06°

Magnetic Field
Strength: 53112.7nT
Dip Angle: 66.82°
Date: 1/5/2010
Model: IGRF200510

WELL DETAILS: P_NRC 1-9

+N/-S	+E/-W	Northing	Ground Level:	Easting	Latitude	Longitude	Slot
0.00	0.00	1268271.65	4997.00	3170066.29	40° 4' 5.506 N	104° 53' 32.428 W	

FORMATION TOP DETAILS

TVDPath	MDPath	Formation
3239.00	3321.78	PARKMAN
4714.00	4875.92	SUSSEX
5184.00	5371.14	SHANNON
7354.00	7571.13	NIO A
7694.00	7911.13	CODELL
8144.00	8361.13	JSAND

SECTION DETAILS

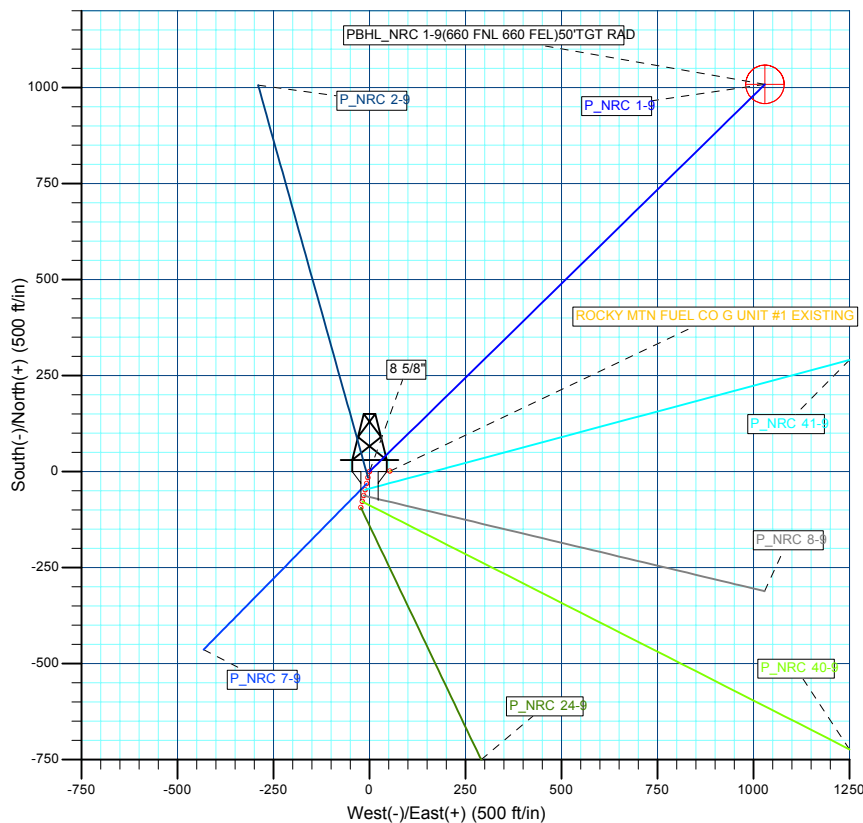
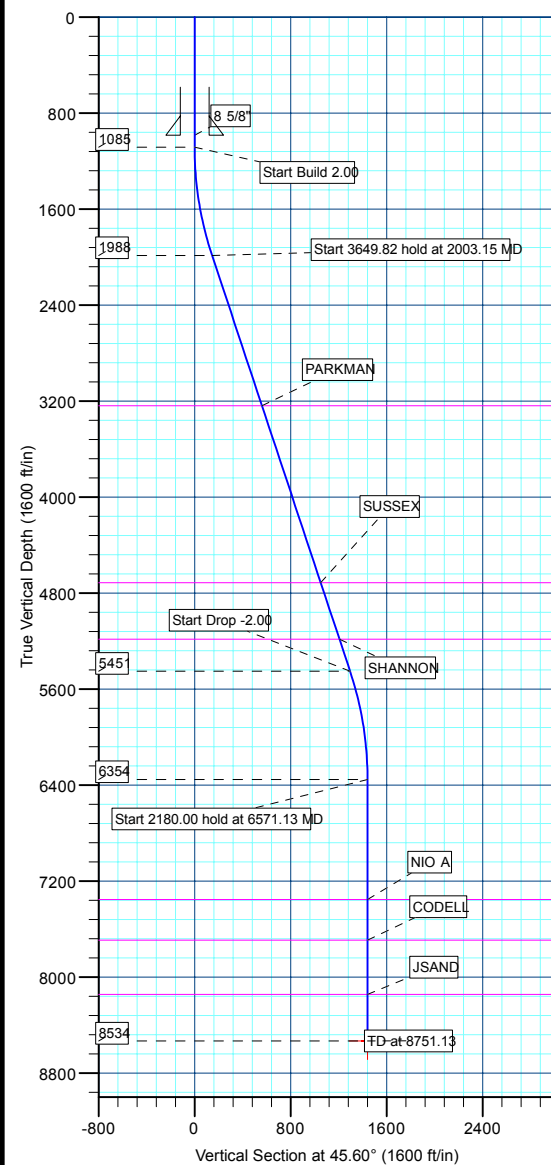
MD	Inc	Azi	TVD	+N/-S	+E/-W	DLeg	TFace	VSec	Target
0.00	0.00	0.00	0.00	0.00	0.00	0.00	0.00	0.00	
1085.00	0.00	0.00	1085.00	0.00	0.00	0.00	0.00	0.00	
2003.15	18.36	45.60	1987.52	102.07	104.22	2.00	45.60	145.88	
5652.97	18.36	45.60	5451.48	906.63	925.68	0.00	0.00	1295.71	
6571.13	0.00	0.00	6354.00	1008.71	1029.89	2.00	180.00	1441.59	
8751.13	0.00	0.00	8534.00	1008.71	1029.89	0.00	0.00	1441.59	PBHL_NRC 1-9(660 FNL 660 FEL)50'TGT RAD

CASING DETAILS

TVD	MD	Name	Size
985.00	985.00	8 5/8"	8.62



B ELEV:WELL @ 5012.00ft (Original Well Elev)
GRD ELEV: 4997.00



WELLBORE TARGET DETAILS (MAP CO-ORDINATES AND LAT/LONG)

Name	TVD	+N/-S	+E/-W	Northing	Easting	Latitude	Longitude	Shape
PBHL	8534.00	1008.71	1029.89	1269287.38	3171089.24	40° 4' 15.474 N 104° 53' 19.180 W		Circle (Radius: 50.00)

Plan: PLAN #1 1-5-10 RHS (P_NRC 1-9/P_NRC 1-9)

Created By: Robert H. Scott

Database:	EDM 2003.21 Single User Db	Local Co-ordinate Reference:	Well P_NRC 1-9
Company:	US ROCKIES REGION PLANNING	TVD Reference:	WELL @ 5012.00ft (Original Well Elev)
Project:	COLORADO NORTHERN ZONE - 83	MD Reference:	WELL @ 5012.00ft (Original Well Elev)
Site:	WELD_NRC 17-9 PAD	North Reference:	True
Well:	P_NRC 1-9	Survey Calculation Method:	Minimum Curvature
Wellbore:	P_NRC 1-9		
Design:	PLAN #1 1-5-10 RHS		

Project	COLORADO NORTHERN ZONE - 83, KERR MCGEE OIL & GAS ONSHORE LP		
Map System:	US State Plane 1983	System Datum:	Mean Sea Level
Geo Datum:	North American Datum 1983		
Map Zone:	Colorado Northern Zone		

Site						WELD_NRC 17-9 PAD, SECTION 9 T1N R67W											
Site Position:						Northing:			1,268,271.65 ft			Latitude:			40° 4' 5.506 N		
From:			Lat/Long			Easting:			3,170,066.29 ft			Longitude:			104° 53' 32.428 W		
Position Uncertainty:			0.00 ft			Slot Radius:			in			Grid Convergence:			0.39 °		

Well	P_NRC 1-9					
Well Position	+N/-S	0.00 ft	Northing:	1,268,271.65 ft	Latitude:	40° 4' 5.506 N
	+E/-W	0.00 ft	Easting:	3,170,066.29 ft	Longitude:	104° 53' 32.428 W
Position Uncertainty		0.00 ft	Wellhead Elevation:	ft	Ground Level:	4,997.00 ft

Wellbore	P_NRC 1-9				
Magnetics	Model Name	Sample Date	Declination (°)	Dip Angle (°)	Field Strength (nT)
	IGRF200510	1/5/2010	9.06	66.82	53,113

Design	PLAN #1 1-5-10 RHS			
Audit Notes:				
Version:	Phase:	PLAN	Tie On Depth:	0.00
Vertical Section:	Depth From (TVD) (ft)	+N/-S (ft)	+E/-W (ft)	Direction (°)
	0.00	0.00	0.00	45.60

Plan Sections										
Measured Depth (ft)	Inclination (°)	Azimuth (°)	Vertical Depth (ft)	+N/-S (ft)	+E/-W (ft)	Dogleg Rate (°/100ft)	Build Rate (°/100ft)	Turn Rate (°/100ft)	TFO (°)	Target
0.00	0.00	0.00	0.00	0.00	0.00	0.00	0.00	0.00	0.00	
1,085.00	0.00	0.00	1,085.00	0.00	0.00	0.00	0.00	0.00	0.00	
2,003.15	18.36	45.60	1,987.52	102.07	104.22	2.00	2.00	0.00	45.60	
5,652.97	18.36	45.60	5,451.48	906.63	925.68	0.00	0.00	0.00	0.00	
6,571.13	0.00	0.00	6,354.00	1,008.71	1,029.89	2.00	-2.00	0.00	180.00	
8,751.13	0.00	0.00	8,534.00	1,008.71	1,029.89	0.00	0.00	0.00	0.00	PBHL_NRC 1-9(66)

Database:	EDM 2003.21 Single User Db	Local Co-ordinate Reference:	Well P_NRC 1-9
Company:	US ROCKIES REGION PLANNING	TVD Reference:	WELL @ 5012.00ft (Original Well Elev)
Project:	COLORADO NORTHERN ZONE - 83	MD Reference:	WELL @ 5012.00ft (Original Well Elev)
Site:	WELD_NRC 17-9 PAD	North Reference:	True
Well:	P_NRC 1-9	Survey Calculation Method:	Minimum Curvature
Wellbore:	P_NRC 1-9		
Design:	PLAN #1 1-5-10 RHS		

Planned Survey									
Measured Depth (ft)	Inclination (°)	Azimuth (°)	Vertical Depth (ft)	+N/-S (ft)	+E/-W (ft)	Vertical Section (ft)	Dogleg Rate (°/100ft)	Build Rate (°/100ft)	Turn Rate (°/100ft)
Start Build 2.00									
1,085.00	0.00	0.00	1,085.00	0.00	0.00	0.00	0.00	0.00	0.00
1,100.00	0.30	45.60	1,100.00	0.03	0.03	0.04	2.00	2.00	0.00
1,200.00	2.30	45.60	1,199.97	1.61	1.65	2.31	2.00	2.00	0.00
1,300.00	4.30	45.60	1,299.80	5.64	5.76	8.06	2.00	2.00	0.00
1,400.00	6.30	45.60	1,399.37	12.11	12.36	17.30	2.00	2.00	0.00
1,500.00	8.30	45.60	1,498.55	21.00	21.44	30.01	2.00	2.00	0.00
1,600.00	10.30	45.60	1,597.23	32.30	32.98	46.17	2.00	2.00	0.00
1,700.00	12.30	45.60	1,695.29	46.01	46.98	65.76	2.00	2.00	0.00
1,800.00	14.30	45.60	1,792.60	62.11	63.41	88.76	2.00	2.00	0.00
1,900.00	16.30	45.60	1,889.05	80.57	82.26	115.15	2.00	2.00	0.00
2,000.00	18.30	45.60	1,984.52	101.38	103.51	144.89	2.00	2.00	0.00
Start 3649.82 hold at 2003.15 MD									
2,003.15	18.36	45.60	1,987.52	102.07	104.22	145.88	2.00	2.00	0.00
2,100.00	18.36	45.60	2,079.43	123.42	126.01	176.39	0.00	0.00	0.00
2,200.00	18.36	45.60	2,174.34	145.47	148.52	207.89	0.00	0.00	0.00
2,300.00	18.36	45.60	2,269.25	167.51	171.03	239.40	0.00	0.00	0.00
2,400.00	18.36	45.60	2,364.15	189.55	193.53	270.90	0.00	0.00	0.00
2,500.00	18.36	45.60	2,459.06	211.60	216.04	302.40	0.00	0.00	0.00
2,600.00	18.36	45.60	2,553.97	233.64	238.55	333.91	0.00	0.00	0.00
2,700.00	18.36	45.60	2,648.88	255.68	261.06	365.41	0.00	0.00	0.00
2,800.00	18.36	45.60	2,743.79	277.73	283.56	396.91	0.00	0.00	0.00
2,900.00	18.36	45.60	2,838.69	299.77	306.07	428.42	0.00	0.00	0.00
3,000.00	18.36	45.60	2,933.60	321.82	328.58	459.92	0.00	0.00	0.00
3,100.00	18.36	45.60	3,028.51	343.86	351.08	491.43	0.00	0.00	0.00
3,200.00	18.36	45.60	3,123.42	365.90	373.59	522.93	0.00	0.00	0.00
3,300.00	18.36	45.60	3,218.33	387.95	396.10	554.43	0.00	0.00	0.00
PARKMAN									
3,321.78	18.36	45.60	3,239.00	392.75	401.00	561.30	0.00	0.00	0.00
3,400.00	18.36	45.60	3,313.23	409.99	418.60	585.94	0.00	0.00	0.00
3,500.00	18.36	45.60	3,408.14	432.03	441.11	617.44	0.00	0.00	0.00
3,600.00	18.36	45.60	3,503.05	454.08	463.62	648.94	0.00	0.00	0.00
3,700.00	18.36	45.60	3,597.96	476.12	486.12	680.45	0.00	0.00	0.00
3,800.00	18.36	45.60	3,692.87	498.17	508.63	711.95	0.00	0.00	0.00
3,900.00	18.36	45.60	3,787.77	520.21	531.14	743.46	0.00	0.00	0.00
4,000.00	18.36	45.60	3,882.68	542.25	553.64	774.96	0.00	0.00	0.00
4,100.00	18.36	45.60	3,977.59	564.30	576.15	806.46	0.00	0.00	0.00
4,200.00	18.36	45.60	4,072.50	586.34	598.66	837.97	0.00	0.00	0.00
4,300.00	18.36	45.60	4,167.40	608.39	621.17	869.47	0.00	0.00	0.00
4,400.00	18.36	45.60	4,262.31	630.43	643.67	900.97	0.00	0.00	0.00
4,500.00	18.36	45.60	4,357.22	652.47	666.18	932.48	0.00	0.00	0.00
4,600.00	18.36	45.60	4,452.13	674.52	688.69	963.98	0.00	0.00	0.00
4,700.00	18.36	45.60	4,547.04	696.56	711.19	995.49	0.00	0.00	0.00
4,800.00	18.36	45.60	4,641.94	718.60	733.70	1,026.99	0.00	0.00	0.00
SUSSEX									
4,875.92	18.36	45.60	4,714.00	735.34	750.79	1,050.91	0.00	0.00	0.00
4,900.00	18.36	45.60	4,736.85	740.65	756.21	1,058.49	0.00	0.00	0.00
5,000.00	18.36	45.60	4,831.76	762.69	778.71	1,090.00	0.00	0.00	0.00
5,100.00	18.36	45.60	4,926.67	784.74	801.22	1,121.50	0.00	0.00	0.00
5,200.00	18.36	45.60	5,021.58	806.78	823.73	1,153.00	0.00	0.00	0.00
5,300.00	18.36	45.60	5,116.48	828.82	846.23	1,184.51	0.00	0.00	0.00
SHANNON									
5,371.14	18.36	45.60	5,184.00	844.50	862.24	1,206.92	0.00	0.00	0.00

Database:	EDM 2003.21 Single User Db	Local Co-ordinate Reference:	Well P_NRC 1-9
Company:	US ROCKIES REGION PLANNING	TVD Reference:	WELL @ 5012.00ft (Original Well Elev)
Project:	COLORADO NORTHERN ZONE - 83	MD Reference:	WELL @ 5012.00ft (Original Well Elev)
Site:	WELD_NRC 17-9 PAD	North Reference:	True
Well:	P_NRC 1-9	Survey Calculation Method:	Minimum Curvature
Wellbore:	P_NRC 1-9		
Design:	PLAN #1 1-5-10 RHS		

Planned Survey									
Measured Depth (ft)	Inclination (°)	Azimuth (°)	Vertical Depth (ft)	+N/-S (ft)	+E/-W (ft)	Vertical Section (ft)	Dogleg Rate (°/100ft)	Build Rate (°/100ft)	Turn Rate (°/100ft)
5,400.00	18.36	45.60	5,211.39	850.87	868.74	1,216.01	0.00	0.00	0.00
5,500.00	18.36	45.60	5,306.30	872.91	891.25	1,247.52	0.00	0.00	0.00
5,600.00	18.36	45.60	5,401.21	894.95	913.75	1,279.02	0.00	0.00	0.00
Start Drop -2.00									
5,652.97	18.36	45.60	5,451.48	906.63	925.68	1,295.71	0.00	0.00	0.00
5,700.00	17.42	45.60	5,496.24	916.74	936.00	1,310.16	2.00	-2.00	0.00
5,800.00	15.42	45.60	5,592.15	936.52	956.20	1,338.43	2.00	-2.00	0.00
5,900.00	13.42	45.60	5,688.99	953.95	973.99	1,363.33	2.00	-2.00	0.00
6,000.00	11.42	45.60	5,786.65	969.00	989.36	1,384.84	2.00	-2.00	0.00
6,100.00	9.42	45.60	5,884.99	981.66	1,002.28	1,402.93	2.00	-2.00	0.00
6,200.00	7.42	45.60	5,983.91	991.91	1,012.74	1,417.58	2.00	-2.00	0.00
6,300.00	5.42	45.60	6,083.28	999.73	1,020.74	1,428.77	2.00	-2.00	0.00
6,400.00	3.42	45.60	6,182.97	1,005.13	1,026.24	1,436.48	2.00	-2.00	0.00
6,500.00	1.42	45.60	6,282.88	1,008.09	1,029.26	1,440.70	2.00	-2.00	0.00
Start 2180.00 hold at 6571.13 MD									
6,571.13	0.00	0.00	6,354.00	1,008.71	1,029.89	1,441.59	2.00	-2.00	0.00
6,600.00	0.00	0.00	6,382.87	1,008.71	1,029.89	1,441.59	0.00	0.00	0.00
6,700.00	0.00	0.00	6,482.87	1,008.71	1,029.89	1,441.59	0.00	0.00	0.00
6,800.00	0.00	0.00	6,582.87	1,008.71	1,029.89	1,441.59	0.00	0.00	0.00
6,900.00	0.00	0.00	6,682.87	1,008.71	1,029.89	1,441.59	0.00	0.00	0.00
7,000.00	0.00	0.00	6,782.87	1,008.71	1,029.89	1,441.59	0.00	0.00	0.00
7,100.00	0.00	0.00	6,882.87	1,008.71	1,029.89	1,441.59	0.00	0.00	0.00
7,200.00	0.00	0.00	6,982.87	1,008.71	1,029.89	1,441.59	0.00	0.00	0.00
7,300.00	0.00	0.00	7,082.87	1,008.71	1,029.89	1,441.59	0.00	0.00	0.00
7,400.00	0.00	0.00	7,182.87	1,008.71	1,029.89	1,441.59	0.00	0.00	0.00
7,500.00	0.00	0.00	7,282.87	1,008.71	1,029.89	1,441.59	0.00	0.00	0.00
NIO A									
7,571.13	0.00	0.00	7,354.00	1,008.71	1,029.89	1,441.59	0.00	0.00	0.00
7,600.00	0.00	0.00	7,382.87	1,008.71	1,029.89	1,441.59	0.00	0.00	0.00
7,700.00	0.00	0.00	7,482.87	1,008.71	1,029.89	1,441.59	0.00	0.00	0.00
7,800.00	0.00	0.00	7,582.87	1,008.71	1,029.89	1,441.59	0.00	0.00	0.00
7,900.00	0.00	0.00	7,682.87	1,008.71	1,029.89	1,441.59	0.00	0.00	0.00
CODELL									
7,911.13	0.00	0.00	7,694.00	1,008.71	1,029.89	1,441.59	0.00	0.00	0.00
8,000.00	0.00	0.00	7,782.87	1,008.71	1,029.89	1,441.59	0.00	0.00	0.00
8,100.00	0.00	0.00	7,882.87	1,008.71	1,029.89	1,441.59	0.00	0.00	0.00
8,200.00	0.00	0.00	7,982.87	1,008.71	1,029.89	1,441.59	0.00	0.00	0.00
8,300.00	0.00	0.00	8,082.87	1,008.71	1,029.89	1,441.59	0.00	0.00	0.00
JSAND									
8,361.13	0.00	0.00	8,144.00	1,008.71	1,029.89	1,441.59	0.00	0.00	0.00
8,400.00	0.00	0.00	8,182.87	1,008.71	1,029.89	1,441.59	0.00	0.00	0.00
8,500.00	0.00	0.00	8,282.87	1,008.71	1,029.89	1,441.59	0.00	0.00	0.00
8,600.00	0.00	0.00	8,382.87	1,008.71	1,029.89	1,441.59	0.00	0.00	0.00
8,700.00	0.00	0.00	8,482.87	1,008.71	1,029.89	1,441.59	0.00	0.00	0.00
PBHL_NRC 1-9(660 FNL 660 FEL)50'TGT RAD									
8,751.13	0.00	0.00	8,534.00	1,008.71	1,029.89	1,441.59	0.00	0.00	0.00

Database:	EDM 2003.21 Single User Db	Local Co-ordinate Reference:	Well P_NRC 1-9
Company:	US ROCKIES REGION PLANNING	TVD Reference:	WELL @ 5012.00ft (Original Well Elev)
Project:	COLORADO NORTHERN ZONE - 83	MD Reference:	WELL @ 5012.00ft (Original Well Elev)
Site:	WELD_NRC 17-9 PAD	North Reference:	True
Well:	P_NRC 1-9	Survey Calculation Method:	Minimum Curvature
Wellbore:	P_NRC 1-9		
Design:	PLAN #1 1-5-10 RHS		

Design Targets									
Target Name									
- hit/miss target	Dip Angle	Dip Dir.	TVD	+N/-S	+E/-W	Northing	Easting	Latitude	Longitude
- Shape	(°)	(°)	(ft)	(ft)	(ft)	(ft)	(ft)		
PBHL_NRC 1-9(660 F	0.00	0.00	8,534.00	1,008.71	1,029.89	1,269,287.38	3,171,089.24	40° 4' 15.474 N	104° 53' 19.180 W
- plan hits target center									
- Circle (radius 50.00)									

Casing Points					
	Measured Depth	Vertical Depth		Casing Diameter	Hole Diameter
	(ft)	(ft)	Name	(in)	(in)
	985.00	985.00	8 5/8"	8.62	11.00

Formations						
	Measured Depth	Vertical Depth			Dip	Dip Direction
	(ft)	(ft)	Name	Lithology	(°)	(°)
	3,321.78	3,239.00	PARKMAN			
	4,875.92	4,714.00	SUSSEX			
	5,371.14	5,184.00	SHANNON			
	7,571.13	7,354.00	NIO A			
	7,911.13	7,694.00	CODELL			
	8,361.13	8,144.00	JSAND			

Plan Annotations					
	Measured Depth	Vertical Depth	Local Coordinates		
	(ft)	(ft)	+N/-S	+E/-W	Comment
	(ft)	(ft)	(ft)	(ft)	
	1,085.00	1,085.00	0.00	0.00	Start Build 2.00
	2,003.15	1,987.52	102.07	104.22	Start 3649.82 hold at 2003.15 MD
	5,652.97	5,451.48	906.63	925.68	Start Drop -2.00
	6,571.13	6,354.00	1,008.71	1,029.89	Start 2180.00 hold at 6571.13 MD
	8,751.13	8,534.00	1,008.71	1,029.89	TD at 8751.13



US ROCKIES REGION PLANNING

**COLORADO NORTHERN ZONE - 83
WELD_NRC 17-9 PAD
P_NRC 1-9**

**P_NRC 1-9
PLAN #1 1-5-10 RHS**

Anticollision Report

04 February, 2010



Company:	US ROCKIES REGION PLANNING	Local Co-ordinate Reference:	Well P_NRC 1-9
Project:	COLORADO NORTHERN ZONE - 83	TVD Reference:	WELL @ 5012.00ft (Original Well Elev)
Reference Site:	WELD_NRC 17-9 PAD	MD Reference:	WELL @ 5012.00ft (Original Well Elev)
Site Error:	0.00ft	North Reference:	True
Reference Well:	P_NRC 1-9	Survey Calculation Method:	Minimum Curvature
Well Error:	0.00ft	Output errors are at	2.00 sigma
Reference Wellbore	P_NRC 1-9	Database:	EDM 2003.21 Single User Db
Reference Design:	PLAN #1 1-5-10 RHS	Offset TVD Reference:	Offset Datum

Reference	PLAN #1 1-5-10 RHS		
Filter type:	NO GLOBAL FILTER: Using user defined selection & filtering criteria		
Interpolation Method:	Stations	Error Model:	ISCWSA
Depth Range:	0.00 to 20,000.00ft	Scan Method:	Closest Approach 3D
Results Limited by:	Maximum center-center distance of 10,000.00ft	Error Surface:	Elliptical Conic
Warning Levels Evaluated at:	2.00 Sigma		

Survey Tool Program	Date 2/4/2010			
From (ft)	To (ft)	Survey (Wellbore)	Tool Name	Description
0.00	8,751.13	PLAN #1 1-5-10 RHS (P_NRC 1-9)	MWD	MWD - Standard

Summary						
Site Name Offset Well - Wellbore - Design	Reference Measured Depth (ft)	Offset Measured Depth (ft)	Distance Between Centres (ft)	Distance Between Ellipses (ft)	Separation Factor	Warning
WELD_NRC 17-9 PAD						
P_NRC 24-9 - P_NRC 24-9 - PLAN #1 1-5-10 RHS	1,085.00	1,085.00	96.22	91.60	20.831	CC, ES
P_NRC 24-9 - P_NRC 24-9 - PLAN #1 1-5-10 RHS	1,200.00	1,196.95	99.92	94.85	19.728	SF
P_NRC 2-9 - P_NRC 2-9 - PLAN #1 1-5-10 RHS	1,143.06	1,143.34	16.08	11.21	3.298	CC
P_NRC 2-9 - P_NRC 2-9 - PLAN #1 1-5-10 RHS	1,200.00	1,200.52	16.18	11.05	3.157	ES, SF
P_NRC 40-9 - P_NRC 40-9 - PLAN #1 1-5-10 RHS	1,085.00	1,085.00	80.13	75.51	17.348	CC
P_NRC 40-9 - P_NRC 40-9 - PLAN #1 1-5-10 RHS	1,100.00	1,099.90	80.17	75.49	17.123	ES
P_NRC 40-9 - P_NRC 40-9 - PLAN #1 1-5-10 RHS	1,300.00	1,298.19	88.90	83.41	16.186	SF
P_NRC 41-9 - P_NRC 41-9 - PLAN #1 1-5-10 RHS	1,085.00	1,085.00	48.26	43.64	10.447	CC
P_NRC 41-9 - P_NRC 41-9 - PLAN #1 1-5-10 RHS	1,100.00	1,100.12	48.27	43.59	10.305	ES
P_NRC 41-9 - P_NRC 41-9 - PLAN #1 1-5-10 RHS	1,400.00	1,402.26	54.98	49.00	9.189	SF
P_NRC 7-9 - P_NRC 7-9 - Design #1	1,085.00	1,085.00	32.18	27.56	6.967	CC, ES
P_NRC 7-9 - P_NRC 7-9 - Design #1	1,100.00	1,099.86	32.24	27.56	6.887	SF
P_NRC 8-9 - P_NRC 8-9 - PLAN #1 1-5-10 RHS	1,085.00	1,085.00	63.98	59.37	13.865	CC
P_NRC 8-9 - P_NRC 8-9 - PLAN #1 1-5-10 RHS	1,100.00	1,100.00	64.01	59.34	13.683	ES
P_NRC 8-9 - P_NRC 8-9 - PLAN #1 1-5-10 RHS	1,300.00	1,299.70	70.92	65.42	12.886	SF
ROCKY MTN FUEL CO G UNIT #1 EXISTING - ROCKY	1,559.46	1,538.30	36.37	-26.60	0.578	Level 1, CC
ROCKY MTN FUEL CO G UNIT #1 EXISTING - ROCKY	1,600.00	1,578.23	37.03	-27.62	0.573	Level 1, ES, SF

Offset Design	WELD_NRC 17-9 PAD - P_NRC 24-9 - P_NRC 24-9 - PLAN #1 1-5-10 RHS												Offset Site Error:	0.00 ft
Survey Program:	0-MWD												Offset Well Error:	0.00 ft
Reference	Offset	Semi Major Axis		Distance		Minimum		Separation		Warning				
Measured Depth (ft)	Vertical Depth (ft)	Measured Depth (ft)	Vertical Depth (ft)	Reference (ft)	Offset (ft)	Highside Toolface (°)	Offset Wellbore Centre +N/-S (ft)	Offset Wellbore Centre +E/-W (ft)	Between Centres (ft)	Between Ellipses (ft)	Minimum Separation (ft)	Separation Factor		
0.00	0.00	0.00	0.00	0.00	0.00	-166.71	-93.64	-22.11	96.22					
100.00	100.00	100.00	100.00	0.10	0.10	-166.71	-93.64	-22.11	96.22	96.02	0.19	503.609		
200.00	200.00	200.00	200.00	0.32	0.32	-166.71	-93.64	-22.11	96.22	95.57	0.64	150.199		
300.00	300.00	300.00	300.00	0.55	0.55	-166.71	-93.64	-22.11	96.22	95.13	1.09	88.261		
400.00	400.00	400.00	400.00	0.77	0.77	-166.71	-93.64	-22.11	96.22	94.68	1.54	62.492		
500.00	500.00	500.00	500.00	0.99	0.99	-166.71	-93.64	-22.11	96.22	94.23	1.99	48.369		
600.00	600.00	600.00	600.00	1.22	1.22	-166.71	-93.64	-22.11	96.22	93.78	2.44	39.453		
700.00	700.00	700.00	700.00	1.44	1.44	-166.71	-93.64	-22.11	96.22	93.33	2.89	33.313		
800.00	800.00	800.00	800.00	1.67	1.67	-166.71	-93.64	-22.11	96.22	92.88	3.34	28.826		
900.00	900.00	900.00	900.00	1.89	1.89	-166.71	-93.64	-22.11	96.22	92.43	3.79	25.405		
1,000.00	1,000.00	1,000.00	1,000.00	2.12	2.12	-166.71	-93.64	-22.11	96.22	91.98	4.24	22.709		

CC - Min centre to center distance or convergent point, SF - min separation factor, ES - min ellipse separation

Company:	US ROCKIES REGION PLANNING	Local Co-ordinate Reference:	Well P_NRC 1-9
Project:	COLORADO NORTHERN ZONE - 83	TVD Reference:	WELL @ 5012.00ft (Original Well Elev)
Reference Site:	WELD_NRC 17-9 PAD	MD Reference:	WELL @ 5012.00ft (Original Well Elev)
Site Error:	0.00ft	North Reference:	True
Reference Well:	P_NRC 1-9	Survey Calculation Method:	Minimum Curvature
Well Error:	0.00ft	Output errors are at	2.00 sigma
Reference Wellbore	P_NRC 1-9	Database:	EDM 2003.21 Single User Db
Reference Design:	PLAN #1 1-5-10 RHS	Offset TVD Reference:	Offset Datum

Offset Design WELD_NRC 17-9 PAD - P_NRC 24-9 - P_NRC 24-9 - PLAN #1 1-5-10 RHS												Offset Site Error:	0.00 ft
Survey Program: 0-MWMD												Offset Well Error:	0.00 ft
Measured Depth (ft)	Vertical Depth (ft)	Measured Depth (ft)	Vertical Depth (ft)	Reference (ft)	Offset (ft)	Highside Toolface (°)	Offset Wellbore Centre +N/-S (ft)	+E/-W (ft)	Between Centres (ft)	Between Ellipses (ft)	Minimum Separation (ft)	Separation Factor	Warning
1,085.00	1,085.00	1,085.00	1,085.00	2.31	2.31	-166.71	-93.64	-22.11	96.22	91.60	4.62	20.831 CC, ES	
1,100.00	1,100.00	1,099.62	1,099.62	2.34	2.34	147.69	-93.67	-22.09	96.28	91.60	4.68	20.569	
1,200.00	1,199.97	1,196.95	1,196.92	2.56	2.51	147.55	-95.61	-21.17	99.92	94.85	5.06	19.728 SF	
1,300.00	1,299.80	1,293.76	1,293.58	2.78	2.69	147.25	-100.50	-18.84	109.14	103.68	5.45	20.007	
1,400.00	1,399.37	1,389.61	1,389.03	3.01	2.88	146.83	-108.24	-15.15	123.89	118.03	5.85	21.169	
1,500.00	1,498.55	1,484.07	1,482.78	3.26	3.08	146.37	-118.69	-10.17	144.08	137.82	6.26	23.015	
1,600.00	1,597.23	1,576.75	1,574.33	3.53	3.32	145.90	-131.64	-3.99	169.62	162.93	6.68	25.381	
1,700.00	1,695.29	1,668.83	1,664.82	3.84	3.58	145.45	-147.02	3.34	200.24	193.11	7.13	28.099	
1,800.00	1,792.60	1,762.89	1,757.13	4.20	3.88	145.38	-163.35	11.12	234.14	226.55	7.60	30.815	
1,900.00	1,889.05	1,855.89	1,848.40	4.60	4.19	145.63	-179.49	18.82	270.76	262.67	8.09	33.471	
2,003.15	1,987.52	1,950.61	1,941.34	5.08	4.53	146.09	-195.93	26.66	311.38	302.76	8.62	36.141	
2,100.00	2,079.43	2,038.90	2,027.99	5.58	4.85	146.95	-211.26	33.97	350.90	341.72	9.18	38.218	
2,200.00	2,174.34	2,130.08	2,117.46	6.12	5.19	147.65	-227.09	41.51	391.77	381.98	9.78	40.047	
2,300.00	2,269.25	2,221.25	2,206.93	6.67	5.54	148.23	-242.91	49.06	432.67	422.28	10.40	41.613	
2,400.00	2,364.15	2,312.42	2,296.41	7.24	5.89	148.70	-258.74	56.60	473.61	462.59	11.02	42.963	
2,500.00	2,459.06	2,403.59	2,385.88	7.82	6.25	149.10	-274.56	64.15	514.57	502.91	11.66	44.135	
2,600.00	2,553.97	2,494.77	2,475.35	8.40	6.62	149.44	-290.39	71.69	555.55	543.24	12.30	45.158	
2,700.00	2,648.88	2,585.94	2,564.82	9.00	6.98	149.74	-306.22	79.24	596.54	583.59	12.95	46.056	
2,800.00	2,743.79	2,677.11	2,654.29	9.60	7.36	149.99	-322.04	86.78	637.54	623.93	13.61	46.850	
2,900.00	2,838.69	2,768.28	2,743.76	10.20	7.73	150.22	-337.87	94.33	678.55	664.28	14.27	47.556	
3,000.00	2,933.60	2,859.46	2,833.23	10.81	8.10	150.42	-353.70	101.87	719.57	704.64	14.93	48.186	
3,100.00	3,028.51	2,950.63	2,922.70	11.42	8.48	150.60	-369.52	109.42	760.60	745.00	15.60	48.752	
3,200.00	3,123.42	3,041.80	3,012.17	12.04	8.86	150.76	-385.35	116.96	801.63	785.36	16.27	49.262	
3,300.00	3,218.33	3,132.97	3,101.64	12.65	9.24	150.90	-401.17	124.51	842.67	825.72	16.95	49.724	
3,400.00	3,313.23	3,224.15	3,191.12	13.27	9.62	151.03	-417.00	132.05	883.71	866.08	17.62	50.143	
3,500.00	3,408.14	3,315.32	3,280.59	13.89	10.01	151.15	-432.83	139.60	924.75	906.45	18.30	50.526	
3,600.00	3,503.05	3,406.49	3,370.06	14.52	10.39	151.26	-448.65	147.14	965.80	946.81	18.98	50.876	
3,700.00	3,597.96	3,497.67	3,459.53	15.14	10.78	151.36	-464.48	154.69	1,006.85	987.18	19.67	51.197	
3,800.00	3,692.87	3,588.84	3,549.00	15.76	11.16	151.45	-480.31	162.23	1,047.90	1,027.55	20.35	51.493	
3,900.00	3,787.77	3,680.01	3,638.47	16.39	11.55	151.54	-496.13	169.78	1,088.95	1,067.92	21.04	51.766	
4,000.00	3,882.68	3,771.18	3,727.94	17.02	11.94	151.62	-511.96	177.33	1,130.01	1,108.29	21.72	52.019	
4,100.00	3,977.59	3,862.36	3,817.41	17.65	12.33	151.69	-527.78	184.87	1,171.07	1,148.66	22.41	52.253	
4,200.00	4,072.50	3,953.53	3,906.88	18.27	12.71	151.76	-543.61	192.42	1,212.13	1,189.03	23.10	52.472	
4,300.00	4,167.40	4,044.70	3,996.35	18.90	13.10	151.82	-559.44	199.96	1,253.19	1,229.40	23.79	52.675	
4,400.00	4,262.31	4,135.87	4,085.82	19.53	13.49	151.88	-575.26	207.51	1,294.25	1,269.77	24.48	52.866	
4,500.00	4,357.22	4,227.05	4,175.30	20.16	13.88	151.94	-591.09	215.05	1,335.31	1,310.14	25.17	53.044	
4,600.00	4,452.13	4,318.22	4,264.77	20.79	14.27	151.99	-606.91	222.60	1,376.38	1,350.51	25.87	53.211	
4,700.00	4,547.04	4,409.39	4,354.24	21.42	14.66	152.04	-622.74	230.14	1,417.44	1,390.88	26.56	53.368	
4,800.00	4,641.94	4,500.56	4,443.71	22.06	15.06	152.09	-638.57	237.69	1,458.51	1,431.25	27.25	53.516	
4,900.00	4,736.85	4,591.74	4,533.18	22.69	15.45	152.13	-654.39	245.23	1,499.57	1,471.62	27.95	53.655	
5,000.00	4,831.76	4,682.91	4,622.65	23.32	15.84	152.17	-670.22	252.78	1,540.64	1,512.00	28.64	53.787	
5,100.00	4,926.67	4,774.08	4,712.12	23.95	16.23	152.21	-686.05	260.32	1,581.71	1,552.37	29.34	53.912	
5,200.00	5,021.58	4,865.26	4,801.59	24.58	16.62	152.25	-701.87	267.87	1,622.78	1,592.74	30.04	54.029	
5,300.00	5,116.48	4,956.43	4,891.06	25.22	17.01	152.29	-717.70	275.41	1,663.84	1,633.11	30.73	54.141	
5,400.00	5,211.39	5,047.60	4,980.53	25.85	17.41	152.32	-733.52	282.96	1,704.91	1,673.49	31.43	54.247	
5,500.00	5,306.30	5,138.77	5,070.01	26.49	17.80	152.36	-749.35	290.50	1,745.98	1,713.86	32.13	54.348	
5,600.00	5,401.21	5,229.95	5,159.48	27.12	18.19	152.39	-765.18	298.05	1,787.05	1,754.23	32.82	54.444	
5,652.97	5,451.48	5,278.24	5,206.87	27.45	18.40	152.40	-773.56	302.05	1,808.81	1,775.62	33.19	54.493	
5,700.00	5,496.24	5,321.26	5,249.08	27.72	18.59	152.60	-781.03	305.61	1,827.81	1,794.24	33.58	54.438	
5,800.00	5,592.15	5,413.62	5,339.72	28.17	18.99	152.96	-797.06	313.25	1,866.12	1,831.79	34.33	54.359	
5,900.00	5,688.99	5,507.11	5,431.46	28.58	19.39	153.23	-813.29	320.99	1,901.54	1,866.49	35.05	54.247	
6,000.00	5,786.65	5,601.60	5,524.19	28.95	19.80	153.42	-829.69	328.81	1,934.04	1,898.29	35.74	54.108	

CC - Min centre to center distance or convergent point, SF - min separation factor, ES - min ellipse separation

Company:	US ROCKIES REGION PLANNING	Local Co-ordinate Reference:	Well P_NRC 1-9
Project:	COLORADO NORTHERN ZONE - 83	TVD Reference:	WELL @ 5012.00ft (Original Well Elev)
Reference Site:	WELD_NRC 17-9 PAD	MD Reference:	WELL @ 5012.00ft (Original Well Elev)
Site Error:	0.00ft	North Reference:	True
Reference Well:	P_NRC 1-9	Survey Calculation Method:	Minimum Curvature
Well Error:	0.00ft	Output errors are at	2.00 sigma
Reference Wellbore	P_NRC 1-9	Database:	EDM 2003.21 Single User Db
Reference Design:	PLAN #1 1-5-10 RHS	Offset TVD Reference:	Offset Datum

Offset Design WELD_NRC 17-9 PAD - P_NRC 24-9 - P_NRC 24-9 - PLAN #1 1-5-10 RHS												Offset Site Error:	0.00 ft
Survey Program: 0-MWD												Offset Well Error:	0.00 ft
Reference		Offset		Semi Major Axis			Distance						Warning
Measured Depth (ft)	Vertical Depth (ft)	Measured Depth (ft)	Vertical Depth (ft)	Reference (ft)	Offset (ft)	Highside Toolface (°)	Offset Wellbore Centre +N/-S (ft)	+E/-W (ft)	Between Centres (ft)	Between Ellipses (ft)	Minimum Separation (ft)	Separation Factor	
6,100.00	5,884.99	5,696.98	5,617.79	29.27	20.21	153.53	-846.25	336.70	1,963.58	1,927.18	36.40	53.947	
6,200.00	5,983.91	5,793.13	5,712.15	29.55	20.62	153.57	-862.94	344.66	1,990.14	1,953.12	37.01	53.768	
6,300.00	6,083.28	5,924.82	5,841.54	29.79	21.13	153.46	-885.05	355.20	2,013.40	1,975.73	37.67	53.448	
6,400.00	6,182.97	6,123.30	6,038.18	29.97	21.63	153.27	-909.08	366.66	2,029.83	1,991.51	38.33	52.960	
6,500.00	6,282.88	6,325.78	6,240.20	30.11	21.99	153.19	-920.88	372.28	2,038.22	1,999.39	38.83	52.491	
6,571.13	6,354.00	6,439.59	6,354.00	30.19	22.15	-161.20	-921.98	372.81	2,039.44	2,000.38	39.06	52.209	
6,600.00	6,382.87	6,468.47	6,382.87	30.21	22.18	-161.20	-921.98	372.81	2,039.44	2,000.30	39.14	52.102	
6,700.00	6,482.87	6,568.47	6,482.87	30.31	22.30	-161.20	-921.98	372.81	2,039.44	2,000.01	39.43	51.720	
6,800.00	6,582.87	6,668.47	6,582.87	30.41	22.42	-161.20	-921.98	372.81	2,039.44	1,999.72	39.72	51.343	
6,900.00	6,682.87	6,768.47	6,682.87	30.51	22.54	-161.20	-921.98	372.81	2,039.44	1,999.43	40.01	50.968	
7,000.00	6,782.87	6,868.47	6,782.87	30.62	22.66	-161.20	-921.98	372.81	2,039.44	1,999.13	40.31	50.595	
7,100.00	6,882.87	6,968.47	6,882.87	30.72	22.78	-161.20	-921.98	372.81	2,039.44	1,998.83	40.61	50.224	
7,200.00	6,982.87	7,068.47	6,982.87	30.83	22.90	-161.20	-921.98	372.81	2,039.44	1,998.53	40.91	49.854	
7,300.00	7,082.87	7,168.47	7,082.87	30.93	23.02	-161.20	-921.98	372.81	2,039.44	1,998.23	41.21	49.487	
7,400.00	7,182.87	7,268.47	7,182.87	31.04	23.15	-161.20	-921.98	372.81	2,039.44	1,997.92	41.52	49.122	
7,500.00	7,282.87	7,368.47	7,282.87	31.15	23.27	-161.20	-921.98	372.81	2,039.44	1,997.61	41.83	48.760	
7,600.00	7,382.87	7,468.47	7,382.87	31.26	23.40	-161.20	-921.98	372.81	2,039.44	1,997.30	42.14	48.399	
7,700.00	7,482.87	7,568.47	7,482.87	31.38	23.53	-161.20	-921.98	372.81	2,039.44	1,996.99	42.45	48.042	
7,800.00	7,582.87	7,668.47	7,582.87	31.49	23.66	-161.20	-921.98	372.81	2,039.44	1,996.67	42.77	47.687	
7,900.00	7,682.87	7,768.47	7,682.87	31.60	23.80	-161.20	-921.98	372.81	2,039.44	1,996.35	43.09	47.334	
8,000.00	7,782.87	7,868.47	7,782.87	31.72	23.93	-161.20	-921.98	372.81	2,039.44	1,996.03	43.41	46.984	
8,100.00	7,882.87	7,968.47	7,882.87	31.84	24.07	-161.20	-921.98	372.81	2,039.44	1,995.71	43.73	46.637	
8,200.00	7,982.87	8,068.47	7,982.87	31.95	24.20	-161.20	-921.98	372.81	2,039.44	1,995.39	44.06	46.292	
8,300.00	8,082.87	8,168.47	8,082.87	32.07	24.34	-161.20	-921.98	372.81	2,039.44	1,995.06	44.38	45.951	
8,400.00	8,182.87	8,268.47	8,182.87	32.19	24.48	-161.20	-921.98	372.81	2,039.44	1,994.73	44.71	45.612	
8,449.59	8,232.46	8,318.06	8,232.46	32.25	24.55	-161.20	-921.98	372.81	2,039.44	1,994.56	44.88	45.445	
8,500.00	8,282.87	8,334.59	8,249.00	32.31	24.57	-161.20	-921.98	372.81	2,039.72	1,994.73	44.99	45.338	
8,600.00	8,382.87	8,334.59	8,249.00	32.44	24.57	-161.20	-921.98	372.81	2,043.83	1,998.67	45.16	45.259	
8,700.00	8,482.87	8,334.59	8,249.00	32.56	24.57	-161.20	-921.98	372.81	2,052.81	2,007.48	45.33	45.287	
8,751.13	8,534.00	8,334.59	8,249.00	32.62	24.57	-161.20	-921.98	372.81	2,059.26	2,013.84	45.42	45.342	

Company:	US ROCKIES REGION PLANNING	Local Co-ordinate Reference:	Well P_NRC 1-9
Project:	COLORADO NORTHERN ZONE - 83	TVD Reference:	WELL @ 5012.00ft (Original Well Elev)
Reference Site:	WELD_NRC 17-9 PAD	MD Reference:	WELL @ 5012.00ft (Original Well Elev)
Site Error:	0.00ft	North Reference:	True
Reference Well:	P_NRC 1-9	Survey Calculation Method:	Minimum Curvature
Well Error:	0.00ft	Output errors are at	2.00 sigma
Reference Wellbore	P_NRC 1-9	Database:	EDM 2003.21 Single User Db
Reference Design:	PLAN #1 1-5-10 RHS	Offset TVD Reference:	Offset Datum

Offset Design WELD_NRC 17-9 PAD - P_NRC 2-9 - P_NRC 2-9 - PLAN #1 1-5-10 RHS												Offset Site Error:	0.00 ft
Survey Program: 0-MWD												Offset Well Error:	0.00 ft
Measured Depth (ft)	Vertical Depth (ft)	Measured Depth (ft)	Vertical Depth (ft)	Reference (ft)	Offset (ft)	Semi Major Axis Highside Toolface (°)	Offset Wellbore Centre +N/-S (ft)		Distance Between Centres (ft)		Minimum Separation (ft)	Separation Factor	Warning
0.00	0.00	0.00	0.00	0.00	0.00	-166.93	-15.68	-3.64	16.09				
100.00	100.00	100.00	100.00	0.10	0.10	-166.93	-15.68	-3.64	16.09	15.90	0.19	84.235	
200.00	200.00	200.00	200.00	0.32	0.32	-166.93	-15.68	-3.64	16.09	15.45	0.64	25.123	
300.00	300.00	300.00	300.00	0.55	0.55	-166.93	-15.68	-3.64	16.09	15.00	1.09	14.763	
400.00	400.00	400.00	400.00	0.77	0.77	-166.93	-15.68	-3.64	16.09	14.55	1.54	10.453	
500.00	500.00	500.00	500.00	0.99	0.99	-166.93	-15.68	-3.64	16.09	14.10	1.99	8.090	
600.00	600.00	600.00	600.00	1.22	1.22	-166.93	-15.68	-3.64	16.09	13.65	2.44	6.599	
700.00	700.00	700.00	700.00	1.44	1.44	-166.93	-15.68	-3.64	16.09	13.20	2.89	5.572	
800.00	800.00	800.00	800.00	1.67	1.67	-166.93	-15.68	-3.64	16.09	12.76	3.34	4.822	
900.00	900.00	900.00	900.00	1.89	1.89	-166.93	-15.68	-3.64	16.09	12.31	3.79	4.249	
1,000.00	1,000.00	1,000.00	1,000.00	2.12	2.12	-166.93	-15.68	-3.64	16.09	11.86	4.24	3.798	
1,085.00	1,085.00	1,085.00	1,085.00	2.31	2.31	-166.93	-15.68	-3.64	16.09	11.47	4.62	3.484	
1,100.00	1,100.00	1,100.07	1,100.07	2.34	2.34	147.61	-15.64	-3.65	16.09	11.41	4.69	3.434	
1,143.06	1,143.06	1,143.34	1,143.34	2.44	2.44	149.62	-15.10	-3.80	16.08	11.21	4.88	3.298 CC	
1,200.00	1,199.97	1,200.52	1,200.49	2.56	2.57	155.88	-13.43	-4.27	16.18	11.05	5.12	3.157 ES, SF	
1,300.00	1,299.80	1,300.75	1,300.54	2.78	2.79	175.05	-7.86	-5.83	17.81	12.25	5.56	3.204	
1,400.00	1,399.37	1,400.56	1,399.93	3.01	3.02	-163.69	1.04	-8.32	23.46	17.47	5.99	3.916	
1,500.00	1,498.55	1,499.79	1,498.34	3.26	3.27	-148.55	13.19	-11.72	34.06	27.62	6.45	5.284	
1,600.00	1,597.23	1,598.25	1,595.51	3.53	3.54	-139.37	28.48	-16.00	49.16	42.22	6.94	7.083	
1,700.00	1,695.29	1,695.77	1,691.15	3.84	3.84	-133.74	46.78	-21.13	68.24	60.75	7.48	9.117	
1,800.00	1,792.60	1,792.85	1,785.82	4.20	4.17	-130.47	67.49	-26.92	90.75	82.67	8.08	11.227	
1,900.00	1,889.05	1,889.69	1,880.21	4.60	4.52	-129.59	88.36	-32.77	115.64	106.91	8.73	13.250	
2,003.15	1,987.52	1,988.97	1,976.97	5.08	4.90	-129.99	109.76	-38.76	143.57	134.14	9.43	15.223	
2,100.00	2,079.43	2,081.84	2,067.48	5.58	5.27	-130.99	129.77	-44.36	170.91	160.76	10.16	16.827	
2,200.00	2,174.34	2,177.73	2,160.94	6.12	5.67	-131.74	150.43	-50.15	199.18	188.25	10.93	18.219	
2,300.00	2,269.25	2,273.62	2,254.40	6.67	6.07	-132.30	171.10	-55.93	227.47	215.74	11.73	19.393	
2,400.00	2,364.15	2,369.52	2,347.86	7.24	6.47	-132.73	191.76	-61.72	255.78	243.24	12.54	20.390	
2,500.00	2,459.06	2,465.41	2,441.32	7.82	6.89	-133.08	212.43	-67.51	284.10	270.73	13.37	21.244	
2,600.00	2,553.97	2,561.30	2,534.79	8.40	7.30	-133.37	233.09	-73.29	312.43	298.22	14.21	21.982	
2,700.00	2,648.88	2,657.20	2,628.25	9.00	7.73	-133.61	253.76	-79.08	340.76	325.70	15.06	22.624	
2,800.00	2,743.79	2,753.09	2,721.71	9.60	8.15	-133.81	274.42	-84.86	369.10	353.18	15.92	23.185	
2,900.00	2,838.69	2,848.98	2,815.17	10.20	8.58	-133.98	295.09	-90.65	397.44	380.66	16.78	23.680	
3,000.00	2,933.60	2,944.88	2,908.63	10.81	9.01	-134.13	315.75	-96.43	425.79	408.13	17.65	24.119	
3,100.00	3,028.51	3,040.77	3,002.09	11.42	9.44	-134.27	336.42	-102.22	454.13	435.61	18.53	24.511	
3,200.00	3,123.42	3,136.66	3,095.55	12.04	9.88	-134.38	357.08	-108.01	482.48	463.08	19.41	24.862	
3,300.00	3,218.33	3,232.56	3,189.02	12.65	10.31	-134.48	377.75	-113.79	510.83	490.54	20.29	25.178	
3,400.00	3,313.23	3,328.45	3,282.48	13.27	10.75	-134.58	398.41	-119.58	539.18	518.01	21.17	25.463	
3,500.00	3,408.14	3,424.34	3,375.94	13.89	11.19	-134.66	419.08	-125.36	567.54	545.47	22.06	25.723	
3,600.00	3,503.05	3,520.24	3,469.40	14.52	11.63	-134.74	439.74	-131.15	595.89	572.94	22.95	25.960	
3,700.00	3,597.96	3,616.13	3,562.86	15.14	12.07	-134.80	460.41	-136.94	624.25	600.40	23.85	26.177	
3,800.00	3,692.87	3,712.02	3,656.32	15.76	12.51	-134.87	481.07	-142.72	652.60	627.86	24.74	26.376	
3,900.00	3,787.77	3,807.92	3,749.78	16.39	12.95	-134.92	501.74	-148.51	680.96	655.32	25.64	26.559	
4,000.00	3,882.68	3,903.81	3,843.24	17.02	13.39	-134.98	522.40	-154.29	709.31	682.78	26.54	26.728	
4,100.00	3,977.59	3,999.70	3,936.71	17.65	13.84	-135.02	543.07	-160.08	737.67	710.23	27.44	26.885	
4,200.00	4,072.50	4,095.60	4,030.17	18.27	14.28	-135.07	563.73	-165.87	766.03	737.69	28.34	27.031	
4,300.00	4,167.40	4,191.49	4,123.63	18.90	14.73	-135.11	584.40	-171.65	794.39	765.15	29.24	27.166	
4,400.00	4,262.31	4,287.38	4,217.09	19.53	15.17	-135.15	605.06	-177.44	822.75	792.60	30.14	27.293	
4,500.00	4,357.22	4,383.28	4,310.55	20.16	15.62	-135.19	625.73	-183.22	851.10	820.05	31.05	27.411	
4,600.00	4,452.13	4,479.17	4,404.01	20.79	16.06	-135.22	646.39	-189.01	879.46	847.51	31.95	27.522	
4,700.00	4,547.04	4,575.06	4,497.47	21.42	16.51	-135.25	667.06	-194.80	907.82	874.96	32.86	27.626	
4,800.00	4,641.94	4,670.96	4,590.93	22.06	16.96	-135.28	687.72	-200.58	936.18	902.41	33.77	27.724	
4,900.00	4,736.85	4,766.85	4,684.40	22.69	17.40	-135.31	708.39	-206.37	964.54	929.87	34.67	27.817	

CC - Min centre to center distance or convergent point, SF - min separation factor, ES - min ellipse separation

Company:	US ROCKIES REGION PLANNING	Local Co-ordinate Reference:	Well P_NRC 1-9
Project:	COLORADO NORTHERN ZONE - 83	TVD Reference:	WELL @ 5012.00ft (Original Well Elev)
Reference Site:	WELD_NRC 17-9 PAD	MD Reference:	WELL @ 5012.00ft (Original Well Elev)
Site Error:	0.00ft	North Reference:	True
Reference Well:	P_NRC 1-9	Survey Calculation Method:	Minimum Curvature
Well Error:	0.00ft	Output errors are at	2.00 sigma
Reference Wellbore	P_NRC 1-9	Database:	EDM 2003.21 Single User Db
Reference Design:	PLAN #1 1-5-10 RHS	Offset TVD Reference:	Offset Datum

Offset Design WELD_NRC 17-9 PAD - P_NRC 2-9 - P_NRC 2-9 - PLAN #1 1-5-10 RHS												Offset Site Error:	0.00 ft
Survey Program: 0-MWD												Offset Well Error:	0.00 ft
Reference	Offset	Semi Major Axis		Distance									
Measured Depth (ft)	Vertical Depth (ft)	Measured Depth (ft)	Vertical Depth (ft)	Reference (ft)	Offset (ft)	Highside Toolface (°)	Offset Wellbore Centre +N/-S (ft)	+E/-W (ft)	Between Centres (ft)	Between Ellipses (ft)	Minimum Separation (ft)	Separation Factor	Warning
5,000.00	4,831.76	4,862.74	4,777.86	23.32	17.85	-135.34	729.05	-212.15	992.90	957.32	35.58	27.904	
5,100.00	4,926.67	4,958.64	4,871.32	23.95	18.30	-135.36	749.71	-217.94	1,021.26	984.77	36.49	27.986	
5,200.00	5,021.58	5,054.53	4,964.78	24.58	18.75	-135.39	770.38	-223.72	1,049.62	1,012.22	37.40	28.064	
5,300.00	5,116.48	5,150.42	5,058.24	25.22	19.19	-135.41	791.04	-229.51	1,077.98	1,039.67	38.31	28.138	
5,400.00	5,211.39	5,246.32	5,151.70	25.85	19.64	-135.43	811.71	-235.30	1,106.34	1,067.12	39.22	28.208	
5,500.00	5,306.30	5,342.21	5,245.16	26.49	20.09	-135.45	832.37	-241.08	1,134.70	1,094.57	40.13	28.274	
5,600.00	5,401.21	5,438.10	5,338.62	27.12	20.54	-135.47	853.04	-246.87	1,163.06	1,122.02	41.04	28.338	
5,652.97	5,451.48	5,488.90	5,388.13	27.45	20.78	-135.48	863.99	-249.93	1,178.09	1,136.56	41.53	28.370	
5,700.00	5,496.24	5,534.07	5,432.16	27.72	20.99	-135.66	873.72	-252.66	1,191.16	1,149.19	41.97	28.380	
5,800.00	5,592.15	5,630.60	5,526.24	28.17	21.44	-135.94	894.52	-258.48	1,217.19	1,174.33	42.86	28.397	
5,900.00	5,688.99	5,727.67	5,620.85	28.58	21.89	-136.07	915.44	-264.34	1,240.80	1,197.07	43.74	28.371	
6,000.00	5,786.65	5,825.16	5,715.87	28.95	22.35	-136.06	936.45	-270.22	1,261.99	1,217.40	44.58	28.307	
6,100.00	5,884.99	5,935.36	5,823.71	29.27	22.77	-135.94	958.28	-276.33	1,280.30	1,234.94	45.36	28.225	
6,200.00	5,983.91	6,047.04	5,933.80	29.55	23.11	-135.84	976.31	-281.38	1,295.19	1,249.18	46.01	28.151	
6,300.00	6,083.28	6,159.71	6,045.51	29.79	23.40	-135.77	990.30	-285.30	1,306.61	1,260.06	46.55	28.067	
6,400.00	6,182.97	6,273.11	6,158.45	29.97	23.64	-135.72	1,000.10	-288.04	1,314.53	1,267.53	46.99	27.973	
6,500.00	6,282.88	6,386.98	6,272.17	30.11	23.83	-135.69	1,005.60	-289.58	1,318.89	1,271.57	47.32	27.869	
6,571.13	6,354.00	6,468.12	6,353.29	30.19	23.94	-90.08	1,006.86	-289.94	1,319.83	1,272.34	47.49	27.789	
6,600.00	6,382.87	6,497.70	6,382.87	30.21	23.97	-90.08	1,006.86	-289.94	1,319.83	1,272.27	47.56	27.750	
6,700.00	6,482.87	6,597.70	6,482.87	30.31	24.10	-90.08	1,006.86	-289.94	1,319.83	1,272.03	47.81	27.607	
6,800.00	6,582.87	6,697.70	6,582.87	30.41	24.22	-90.08	1,006.86	-289.94	1,319.83	1,271.78	48.06	27.463	
6,900.00	6,682.87	6,797.70	6,682.87	30.51	24.35	-90.08	1,006.86	-289.94	1,319.83	1,271.52	48.31	27.320	
7,000.00	6,782.87	6,897.70	6,782.87	30.62	24.48	-90.08	1,006.86	-289.94	1,319.83	1,271.27	48.57	27.176	
7,100.00	6,882.87	6,997.70	6,882.87	30.72	24.61	-90.08	1,006.86	-289.94	1,319.83	1,271.01	48.82	27.032	
7,200.00	6,982.87	7,097.70	6,982.87	30.83	24.75	-90.08	1,006.86	-289.94	1,319.83	1,270.75	49.09	26.888	
7,300.00	7,082.87	7,197.70	7,082.87	30.93	24.88	-90.08	1,006.86	-289.94	1,319.83	1,270.48	49.35	26.745	
7,400.00	7,182.87	7,297.70	7,182.87	31.04	25.01	-90.08	1,006.86	-289.94	1,319.83	1,270.22	49.62	26.601	
7,500.00	7,282.87	7,397.70	7,282.87	31.15	25.15	-90.08	1,006.86	-289.94	1,319.83	1,269.95	49.88	26.458	
7,600.00	7,382.87	7,497.70	7,382.87	31.26	25.29	-90.08	1,006.86	-289.94	1,319.83	1,269.68	50.16	26.314	
7,700.00	7,482.87	7,597.70	7,482.87	31.38	25.43	-90.08	1,006.86	-289.94	1,319.83	1,269.40	50.43	26.171	
7,800.00	7,582.87	7,697.70	7,582.87	31.49	25.57	-90.08	1,006.86	-289.94	1,319.83	1,269.13	50.71	26.029	
7,900.00	7,682.87	7,797.70	7,682.87	31.60	25.71	-90.08	1,006.86	-289.94	1,319.83	1,268.85	50.99	25.886	
8,000.00	7,782.87	7,897.70	7,782.87	31.72	25.85	-90.08	1,006.86	-289.94	1,319.83	1,268.57	51.27	25.744	
8,100.00	7,882.87	7,997.70	7,882.87	31.84	26.00	-90.08	1,006.86	-289.94	1,319.83	1,268.28	51.55	25.602	
8,200.00	7,982.87	8,097.70	7,982.87	31.95	26.14	-90.08	1,006.86	-289.94	1,319.83	1,268.00	51.84	25.461	
8,300.00	8,082.87	8,197.70	8,082.87	32.07	26.29	-90.08	1,006.86	-289.94	1,319.83	1,267.71	52.13	25.320	
8,400.00	8,182.87	8,297.70	8,182.87	32.19	26.43	-90.08	1,006.86	-289.94	1,319.83	1,267.42	52.42	25.179	
8,500.00	8,282.87	8,397.70	8,282.87	32.31	26.58	-90.08	1,006.86	-289.94	1,319.83	1,267.12	52.71	25.039	
8,600.00	8,382.87	8,497.70	8,382.87	32.44	26.73	-90.08	1,006.86	-289.94	1,319.83	1,266.83	53.01	24.900	
8,700.00	8,482.87	8,597.70	8,482.87	32.56	26.88	-90.08	1,006.86	-289.94	1,319.83	1,266.53	53.30	24.761	
8,751.13	8,534.00	8,648.82	8,534.00	32.62	26.96	-90.08	1,006.86	-289.94	1,319.83	1,266.38	53.46	24.690	

Company:	US ROCKIES REGION PLANNING	Local Co-ordinate Reference:	Well P_NRC 1-9
Project:	COLORADO NORTHERN ZONE - 83	TVD Reference:	WELL @ 5012.00ft (Original Well Elev)
Reference Site:	WELD_NRC 17-9 PAD	MD Reference:	WELL @ 5012.00ft (Original Well Elev)
Site Error:	0.00ft	North Reference:	True
Reference Well:	P_NRC 1-9	Survey Calculation Method:	Minimum Curvature
Well Error:	0.00ft	Output errors are at	2.00 sigma
Reference Wellbore	P_NRC 1-9	Database:	EDM 2003.21 Single User Db
Reference Design:	PLAN #1 1-5-10 RHS	Offset TVD Reference:	Offset Datum

Offset Design WELD_NRC 17-9 PAD - P_NRC 40-9 - P_NRC 40-9 - PLAN #1 1-5-10 RHS												Offset Site Error:	0.00 ft
Survey Program: 0-MWD												Offset Well Error:	0.00 ft
Reference	Offset	Semi Major Axis		Distance									
Measured Depth (ft)	Vertical Depth (ft)	Measured Depth (ft)	Vertical Depth (ft)	Reference (ft)	Offset (ft)	Highside Toolface (°)	Offset Wellbore Centre +N/-S (ft)	+E/-W (ft)	Between Centres (ft)	Between Ellipses (ft)	Minimum Separation (ft)	Separation Factor	Warning
0.00	0.00	0.00	0.00	0.00	0.00	-166.67	-77.97	-18.47	80.13				
100.00	100.00	100.00	100.00	0.10	0.10	-166.67	-77.97	-18.47	80.13	79.94	0.19	419.417	
200.00	200.00	200.00	200.00	0.32	0.32	-166.67	-77.97	-18.47	80.13	79.49	0.64	125.089	
300.00	300.00	300.00	300.00	0.55	0.55	-166.67	-77.97	-18.47	80.13	79.04	1.09	73.506	
400.00	400.00	400.00	400.00	0.77	0.77	-166.67	-77.97	-18.47	80.13	78.59	1.54	52.045	
500.00	500.00	500.00	500.00	0.99	0.99	-166.67	-77.97	-18.47	80.13	78.14	1.99	40.283	
600.00	600.00	600.00	600.00	1.22	1.22	-166.67	-77.97	-18.47	80.13	77.69	2.44	32.858	
700.00	700.00	700.00	700.00	1.44	1.44	-166.67	-77.97	-18.47	80.13	77.24	2.89	27.744	
800.00	800.00	800.00	800.00	1.67	1.67	-166.67	-77.97	-18.47	80.13	76.79	3.34	24.007	
900.00	900.00	900.00	900.00	1.89	1.89	-166.67	-77.97	-18.47	80.13	76.34	3.79	21.158	
1,000.00	1,000.00	1,000.00	1,000.00	2.12	2.12	-166.67	-77.97	-18.47	80.13	75.89	4.24	18.913	
1,085.00	1,085.00	1,085.00	1,085.00	2.31	2.31	-166.67	-77.97	-18.47	80.13	75.51	4.62	17.348	CC
1,100.00	1,100.00	1,099.90	1,099.90	2.34	2.34	147.72	-77.99	-18.44	80.17	75.49	4.68	17.123	ES
1,200.00	1,199.97	1,199.19	1,199.16	2.56	2.53	147.02	-79.00	-16.44	82.63	77.54	5.08	16.256	
1,300.00	1,299.80	1,298.19	1,297.99	2.78	2.72	145.41	-81.57	-11.40	88.90	83.41	5.49	16.186	SF
1,400.00	1,399.37	1,396.67	1,396.06	3.01	2.93	143.26	-85.65	-3.37	99.07	93.15	5.92	16.744	
1,500.00	1,498.55	1,494.40	1,493.01	3.26	3.16	140.90	-91.21	7.56	113.19	106.83	6.36	17.784	
1,600.00	1,597.23	1,591.16	1,588.53	3.53	3.42	138.61	-98.19	21.28	131.30	124.45	6.85	19.174	
1,700.00	1,695.29	1,686.74	1,682.32	3.84	3.72	136.52	-106.51	37.65	153.36	145.98	7.38	20.790	
1,800.00	1,792.60	1,780.94	1,774.11	4.20	4.05	134.66	-116.09	56.51	179.29	171.33	7.96	22.523	
1,900.00	1,889.05	1,873.58	1,863.66	4.60	4.43	133.03	-126.85	77.67	209.02	200.41	8.61	24.281	
2,003.15	1,987.52	1,967.35	1,953.46	5.08	4.87	131.55	-139.07	101.70	243.55	234.20	9.35	26.050	
2,100.00	2,079.43	2,053.91	2,035.54	5.58	5.33	130.63	-151.53	126.20	278.43	268.28	10.15	27.438	
2,200.00	2,174.34	2,142.01	2,118.19	6.12	5.86	129.43	-165.35	153.39	315.88	304.86	11.03	28.644	
2,300.00	2,269.25	2,228.68	2,198.54	6.67	6.43	128.10	-180.07	182.34	354.88	342.92	11.96	29.675	
2,400.00	2,364.15	2,313.78	2,276.45	7.24	7.05	126.68	-195.59	212.86	395.47	382.54	12.93	30.586	
2,500.00	2,459.06	2,401.80	2,356.18	7.82	7.74	125.23	-212.49	246.10	437.42	423.46	13.96	31.324	
2,600.00	2,553.97	2,491.98	2,437.80	8.40	8.47	123.99	-229.87	280.28	479.66	464.63	15.03	31.910	
2,700.00	2,648.88	2,582.17	2,519.43	9.00	9.21	122.94	-247.25	314.46	522.06	505.95	16.11	32.402	
2,800.00	2,743.79	2,672.35	2,601.05	9.60	9.97	122.05	-264.63	348.65	564.59	547.38	17.20	32.820	
2,900.00	2,838.69	2,762.53	2,682.68	10.20	10.73	121.28	-282.01	382.83	607.21	588.90	18.30	33.178	
3,000.00	2,933.60	2,852.72	2,764.30	10.81	11.50	120.61	-299.38	417.01	649.90	630.50	19.41	33.488	
3,100.00	3,028.51	2,942.90	2,845.92	11.42	12.28	120.03	-316.76	451.20	692.66	672.15	20.52	33.758	
3,200.00	3,123.42	3,033.08	2,927.55	12.04	13.06	119.51	-334.14	485.38	735.48	713.84	21.64	33.995	
3,300.00	3,218.33	3,123.27	3,009.17	12.65	13.85	119.05	-351.52	519.56	778.33	755.58	22.76	34.204	
3,400.00	3,313.23	3,213.45	3,090.80	13.27	14.64	118.64	-368.90	553.74	821.23	797.35	23.88	34.390	
3,500.00	3,408.14	3,303.63	3,172.42	13.89	15.43	118.27	-386.28	587.93	864.15	839.15	25.01	34.556	
3,600.00	3,503.05	3,393.82	3,254.04	14.52	16.22	117.93	-403.66	622.11	907.11	880.97	26.14	34.706	
3,700.00	3,597.96	3,484.00	3,335.67	15.14	17.02	117.63	-421.04	656.29	950.08	922.81	27.27	34.840	
3,800.00	3,692.87	3,574.18	3,417.29	15.76	17.82	117.35	-438.42	690.48	993.08	964.67	28.40	34.963	
3,900.00	3,787.77	3,664.37	3,498.92	16.39	18.62	117.09	-455.80	724.66	1,036.09	1,006.55	29.54	35.074	
4,000.00	3,882.68	3,754.55	3,580.54	17.02	19.42	116.85	-473.18	758.84	1,079.12	1,048.44	30.68	35.176	
4,100.00	3,977.59	3,844.73	3,662.17	17.65	20.22	116.64	-490.56	793.02	1,122.16	1,090.35	31.82	35.269	
4,200.00	4,072.50	3,934.92	3,743.79	18.27	21.02	116.44	-507.94	827.21	1,165.22	1,132.26	32.96	35.355	
4,300.00	4,167.40	4,025.10	3,825.41	18.90	21.83	116.25	-525.32	861.39	1,208.28	1,174.18	34.10	35.434	
4,400.00	4,262.31	4,115.28	3,907.04	19.53	22.63	116.07	-542.70	895.57	1,251.36	1,216.12	35.24	35.508	
4,500.00	4,357.22	4,205.47	3,988.66	20.16	23.44	115.91	-560.08	929.76	1,294.44	1,258.06	36.39	35.576	
4,600.00	4,452.13	4,295.65	4,070.29	20.79	24.24	115.76	-577.46	963.94	1,337.54	1,300.01	37.53	35.639	
4,700.00	4,547.04	4,385.83	4,151.91	21.42	25.05	115.61	-594.84	998.12	1,380.64	1,341.96	38.68	35.698	
4,800.00	4,641.94	4,476.02	4,233.53	22.06	25.86	115.48	-612.22	1,032.30	1,423.74	1,383.92	39.82	35.754	
4,900.00	4,736.85	4,566.20	4,315.16	22.69	26.67	115.35	-629.59	1,066.49	1,466.86	1,425.89	40.97	35.805	
5,000.00	4,831.76	4,656.38	4,396.78	23.32	27.48	115.23	-646.97	1,100.67	1,509.97	1,467.86	42.11	35.854	

CC - Min centre to center distance or convergent point, SF - min separation factor, ES - min ellipse separation

Company:	US ROCKIES REGION PLANNING	Local Co-ordinate Reference:	Well P_NRC 1-9
Project:	COLORADO NORTHERN ZONE - 83	TVD Reference:	WELL @ 5012.00ft (Original Well Elev)
Reference Site:	WELD_NRC 17-9 PAD	MD Reference:	WELL @ 5012.00ft (Original Well Elev)
Site Error:	0.00ft	North Reference:	True
Reference Well:	P_NRC 1-9	Survey Calculation Method:	Minimum Curvature
Well Error:	0.00ft	Output errors are at	2.00 sigma
Reference Wellbore	P_NRC 1-9	Database:	EDM 2003.21 Single User Db
Reference Design:	PLAN #1 1-5-10 RHS	Offset TVD Reference:	Offset Datum

Offset Design WELD_NRC 17-9 PAD - P_NRC 40-9 - P_NRC 40-9 - PLAN #1 1-5-10 RHS												Offset Site Error:	0.00 ft
Survey Program: 0-MWD												Offset Well Error:	0.00 ft
Reference		Offset		Semi Major Axis			Distance						
Measured Depth (ft)	Vertical Depth (ft)	Measured Depth (ft)	Vertical Depth (ft)	Reference (ft)	Offset (ft)	Highside Toolface (°)	Offset Wellbore Centre +N/-S (ft)	+E/-W (ft)	Between Centres (ft)	Between Ellipses (ft)	Minimum Separation (ft)	Separation Factor	Warning
5,100.00	4,926.67	4,746.57	4,478.41	23.95	28.28	115.12	-664.35	1,134.85	1,553.10	1,509.83	43.26	35.899	
5,200.00	5,021.58	4,836.75	4,560.03	24.58	29.09	115.02	-681.73	1,169.04	1,596.22	1,551.81	44.41	35.942	
5,300.00	5,116.48	4,926.93	4,641.66	25.22	29.90	114.91	-699.11	1,203.22	1,639.36	1,593.80	45.56	35.983	
5,400.00	5,211.39	5,017.12	4,723.28	25.85	30.71	114.82	-716.49	1,237.40	1,682.49	1,635.78	46.71	36.021	
5,500.00	5,306.30	5,107.30	4,804.90	26.49	31.52	114.73	-733.87	1,271.58	1,725.63	1,677.77	47.86	36.057	
5,600.00	5,401.21	5,197.48	4,886.53	27.12	32.33	114.64	-751.25	1,305.77	1,768.77	1,719.77	49.01	36.092	
5,652.97	5,451.48	5,245.26	4,929.77	27.45	32.76	114.60	-760.46	1,323.87	1,791.63	1,742.01	49.62	36.109	
5,700.00	5,496.24	5,287.72	4,968.20	27.72	33.15	114.95	-768.64	1,339.97	1,811.77	1,761.52	50.25	36.052	
5,800.00	5,592.15	5,378.38	5,050.26	28.17	33.96	115.60	-786.11	1,374.33	1,853.63	1,802.13	51.50	35.991	
5,900.00	5,688.99	5,498.95	5,159.69	28.58	34.97	116.03	-809.05	1,419.44	1,893.87	1,841.04	52.83	35.847	
6,000.00	5,786.65	5,671.88	5,319.84	28.95	36.07	116.25	-838.58	1,477.53	1,929.66	1,875.48	54.18	35.616	
6,100.00	5,884.99	5,851.83	5,490.35	29.27	37.04	116.43	-864.61	1,528.72	1,960.00	1,904.60	55.39	35.384	
6,200.00	5,983.91	6,037.94	5,670.13	29.55	37.86	116.58	-886.37	1,571.52	1,984.59	1,928.15	56.45	35.159	
6,300.00	6,083.28	6,229.10	5,857.63	29.79	38.52	116.69	-903.16	1,604.55	2,003.19	1,945.87	57.32	34.948	
6,400.00	6,182.97	6,423.98	6,050.88	29.97	38.98	116.79	-914.41	1,626.68	2,015.59	1,957.59	58.00	34.751	
6,500.00	6,282.88	6,621.06	6,247.58	30.11	39.27	116.88	-919.71	1,637.09	2,021.65	1,963.17	58.48	34.569	
6,571.13	6,354.00	6,727.49	6,354.00	30.19	39.36	162.50	-920.11	1,637.88	2,022.37	1,963.68	58.68	34.462	
6,600.00	6,382.87	6,756.36	6,382.87	30.21	39.38	162.50	-920.11	1,637.88	2,022.37	1,963.63	58.74	34.430	
6,700.00	6,482.87	6,856.36	6,482.87	30.31	39.45	162.50	-920.11	1,637.88	2,022.37	1,963.43	58.94	34.312	
6,800.00	6,582.87	6,956.36	6,582.87	30.41	39.53	162.50	-920.11	1,637.88	2,022.37	1,963.22	59.14	34.194	
6,900.00	6,682.87	7,056.36	6,682.87	30.51	39.60	162.50	-920.11	1,637.88	2,022.37	1,963.02	59.35	34.074	
7,000.00	6,782.87	7,156.36	6,782.87	30.62	39.68	162.50	-920.11	1,637.88	2,022.37	1,962.81	59.56	33.954	
7,100.00	6,882.87	7,256.36	6,882.87	30.72	39.76	162.50	-920.11	1,637.88	2,022.37	1,962.59	59.77	33.834	
7,200.00	6,982.87	7,356.36	6,982.87	30.83	39.84	162.50	-920.11	1,637.88	2,022.37	1,962.38	59.99	33.712	
7,300.00	7,082.87	7,456.36	7,082.87	30.93	39.92	162.50	-920.11	1,637.88	2,022.37	1,962.16	60.21	33.591	
7,400.00	7,182.87	7,556.36	7,182.87	31.04	40.00	162.50	-920.11	1,637.88	2,022.37	1,961.94	60.43	33.468	
7,500.00	7,282.87	7,656.36	7,282.87	31.15	40.08	162.50	-920.11	1,637.88	2,022.37	1,961.72	60.65	33.345	
7,600.00	7,382.87	7,756.36	7,382.87	31.26	40.17	162.50	-920.11	1,637.88	2,022.37	1,961.49	60.87	33.222	
7,700.00	7,482.87	7,856.36	7,482.87	31.38	40.25	162.50	-920.11	1,637.88	2,022.37	1,961.27	61.10	33.098	
7,800.00	7,582.87	7,956.36	7,582.87	31.49	40.34	162.50	-920.11	1,637.88	2,022.37	1,961.04	61.33	32.974	
7,900.00	7,682.87	8,056.36	7,682.87	31.60	40.42	162.50	-920.11	1,637.88	2,022.37	1,960.80	61.56	32.850	
8,000.00	7,782.87	8,156.36	7,782.87	31.72	40.51	162.50	-920.11	1,637.88	2,022.37	1,960.57	61.80	32.725	
8,100.00	7,882.87	8,256.36	7,882.87	31.84	40.60	162.50	-920.11	1,637.88	2,022.37	1,960.33	62.04	32.600	
8,200.00	7,982.87	8,356.36	7,982.87	31.95	40.69	162.50	-920.11	1,637.88	2,022.37	1,960.09	62.28	32.474	
8,300.00	8,082.87	8,456.36	8,082.87	32.07	40.78	162.50	-920.11	1,637.88	2,022.37	1,959.85	62.52	32.349	
8,400.00	8,182.87	8,556.36	8,182.87	32.19	40.88	162.50	-920.11	1,637.88	2,022.37	1,959.61	62.76	32.223	
8,445.47	8,228.34	8,601.83	8,228.34	32.25	40.92	162.50	-920.11	1,637.88	2,022.37	1,959.49	62.87	32.165	
8,500.00	8,282.87	8,617.49	8,244.00	32.31	40.93	162.50	-920.11	1,637.88	2,022.74	1,959.78	62.96	32.126	
8,600.00	8,382.87	8,617.49	8,244.00	32.44	40.93	162.50	-920.11	1,637.88	2,027.13	1,964.04	63.10	32.128	
8,700.00	8,482.87	8,617.49	8,244.00	32.56	40.93	162.50	-920.11	1,637.88	2,036.43	1,973.20	63.23	32.208	
8,751.13	8,534.00	8,617.49	8,244.00	32.62	40.93	162.50	-920.11	1,637.88	2,043.06	1,979.76	63.30	32.277	

Company:	US ROCKIES REGION PLANNING	Local Co-ordinate Reference:	Well P_NRC 1-9
Project:	COLORADO NORTHERN ZONE - 83	TVD Reference:	WELL @ 5012.00ft (Original Well Elev)
Reference Site:	WELD_NRC 17-9 PAD	MD Reference:	WELL @ 5012.00ft (Original Well Elev)
Site Error:	0.00ft	North Reference:	True
Reference Well:	P_NRC 1-9	Survey Calculation Method:	Minimum Curvature
Well Error:	0.00ft	Output errors are at	2.00 sigma
Reference Wellbore	P_NRC 1-9	Database:	EDM 2003.21 Single User Db
Reference Design:	PLAN #1 1-5-10 RHS	Offset TVD Reference:	Offset Datum

Offset Design WELD_NRC 17-9 PAD - P_NRC 41-9 - P_NRC 41-9 - PLAN #1 1-5-10 RHS												Offset Site Error: 0.00 ft	
Survey Program: 0-MWD												Offset Well Error: 0.00 ft	
Reference		Offset		Semi Major Axis			Distance						
Measured Depth (ft)	Vertical Depth (ft)	Measured Depth (ft)	Vertical Depth (ft)	Reference (ft)	Offset (ft)	Highside Toolface (°)	Offset Wellbore Centre +N/-S (ft)	+E/-W (ft)	Between Centres (ft)	Between Ellipses (ft)	Minimum Separation (ft)	Separation Factor	Warning
0.00	0.00	0.00	0.00	0.00	0.00	-166.93	-47.00	-10.92	48.26				
100.00	100.00	100.00	100.00	0.10	0.10	-166.93	-47.00	-10.92	48.26	48.06	0.19	252.576	
200.00	200.00	200.00	200.00	0.32	0.32	-166.93	-47.00	-10.92	48.26	47.61	0.64	75.330	
300.00	300.00	300.00	300.00	0.55	0.55	-166.93	-47.00	-10.92	48.26	47.16	1.09	44.266	
400.00	400.00	400.00	400.00	0.77	0.77	-166.93	-47.00	-10.92	48.26	46.72	1.54	31.342	
500.00	500.00	500.00	500.00	0.99	0.99	-166.93	-47.00	-10.92	48.26	46.27	1.99	24.259	
600.00	600.00	600.00	600.00	1.22	1.22	-166.93	-47.00	-10.92	48.26	45.82	2.44	19.787	
700.00	700.00	700.00	700.00	1.44	1.44	-166.93	-47.00	-10.92	48.26	45.37	2.89	16.707	
800.00	800.00	800.00	800.00	1.67	1.67	-166.93	-47.00	-10.92	48.26	44.92	3.34	14.457	
900.00	900.00	900.00	900.00	1.89	1.89	-166.93	-47.00	-10.92	48.26	44.47	3.79	12.741	
1,000.00	1,000.00	1,000.00	1,000.00	2.12	2.12	-166.93	-47.00	-10.92	48.26	44.02	4.24	11.389	
1,085.00	1,085.00	1,085.00	1,085.00	2.31	2.31	-166.93	-47.00	-10.92	48.26	43.64	4.62	10.447	CC
1,100.00	1,100.00	1,100.12	1,100.12	2.34	2.34	147.46	-46.99	-10.88	48.27	43.59	4.68	10.305	ES
1,200.00	1,199.97	1,200.91	1,200.87	2.56	2.55	146.51	-46.40	-8.65	49.11	44.01	5.11	9.616	
1,300.00	1,299.80	1,301.64	1,301.43	2.78	2.77	144.25	-44.89	-3.01	51.31	45.77	5.54	9.266	
1,400.00	1,399.37	1,402.26	1,401.61	3.01	2.99	141.01	-42.46	6.04	54.98	49.00	5.98	9.189	SF
1,500.00	1,498.55	1,502.74	1,501.26	3.26	3.24	137.20	-39.14	18.45	60.27	53.81	6.46	9.332	
1,600.00	1,597.23	1,603.01	1,600.19	3.53	3.52	133.23	-34.92	34.20	67.30	60.32	6.98	9.637	
1,700.00	1,695.29	1,703.05	1,698.26	3.84	3.84	129.41	-29.82	53.23	76.15	68.58	7.58	10.051	
1,800.00	1,792.60	1,802.79	1,795.31	4.20	4.20	125.91	-23.86	75.49	86.86	78.60	8.26	10.517	
1,900.00	1,889.05	1,902.21	1,891.17	4.60	4.62	122.81	-17.05	100.91	99.41	90.37	9.04	10.993	
2,003.15	1,987.52	2,004.39	1,988.68	5.08	5.11	120.03	-9.16	130.37	114.28	104.30	9.98	11.456	
2,100.00	2,079.43	2,099.95	2,078.85	5.58	5.63	117.40	-0.98	160.95	129.21	118.23	10.98	11.770	
2,200.00	2,174.34	2,198.15	2,170.35	6.12	6.24	113.95	8.24	195.37	145.05	132.94	12.12	11.972	
2,300.00	2,269.25	2,296.23	2,260.88	6.67	6.90	110.36	18.00	231.81	161.61	148.28	13.32	12.129	
2,400.00	2,364.15	2,394.38	2,351.45	7.24	7.59	107.42	27.79	268.35	178.68	164.13	14.55	12.278	
2,500.00	2,459.06	2,492.53	2,442.02	7.82	8.30	105.00	37.57	304.89	196.13	180.34	15.79	12.418	
2,600.00	2,553.97	2,590.69	2,532.60	8.40	9.02	102.97	47.36	341.42	213.87	196.83	17.04	12.548	
2,700.00	2,648.88	2,688.84	2,623.17	9.00	9.75	101.25	57.14	377.96	231.83	213.53	18.30	12.669	
2,800.00	2,743.79	2,786.99	2,713.75	9.60	10.48	99.78	66.93	414.49	249.96	230.40	19.56	12.780	
2,900.00	2,838.69	2,885.15	2,804.32	10.20	11.23	98.51	76.71	451.03	268.23	247.41	20.82	12.882	
3,000.00	2,933.60	2,983.30	2,894.89	10.81	11.98	97.40	86.50	487.56	286.62	264.53	22.09	12.976	
3,100.00	3,028.51	3,081.45	2,985.47	11.42	12.73	96.42	96.28	524.10	305.09	281.74	23.36	13.063	
3,200.00	3,123.42	3,179.61	3,076.04	12.04	13.49	95.56	106.07	560.63	323.64	299.02	24.62	13.143	
3,300.00	3,218.33	3,277.76	3,166.61	12.65	14.25	94.79	115.85	597.17	342.26	316.36	25.89	13.217	
3,400.00	3,313.23	3,375.91	3,257.19	13.27	15.01	94.10	125.64	633.70	360.92	333.76	27.17	13.286	
3,500.00	3,408.14	3,474.07	3,347.76	13.89	15.78	93.47	135.42	670.24	379.64	351.20	28.44	13.349	
3,600.00	3,503.05	3,572.22	3,438.33	14.52	16.55	92.91	145.21	706.77	398.39	368.68	29.71	13.408	
3,700.00	3,597.96	3,670.38	3,528.91	15.14	17.31	92.40	154.99	743.31	417.18	386.19	30.99	13.463	
3,800.00	3,692.87	3,768.53	3,619.48	15.76	18.08	91.93	164.78	779.85	435.99	403.73	32.26	13.515	
3,900.00	3,787.77	3,866.68	3,710.05	16.39	18.86	91.49	174.56	816.38	454.84	421.30	33.54	13.562	
4,000.00	3,882.68	3,964.84	3,800.63	17.02	19.63	91.10	184.35	852.92	473.70	438.89	34.81	13.607	
4,100.00	3,977.59	4,062.99	3,891.20	17.65	20.40	90.73	194.13	889.45	492.59	456.50	36.09	13.649	
4,200.00	4,072.50	4,161.14	3,981.77	18.27	21.18	90.39	203.92	925.99	511.49	474.12	37.36	13.689	
4,300.00	4,167.40	4,259.30	4,072.35	18.90	21.95	90.08	213.70	962.52	530.41	491.77	38.64	13.726	
4,400.00	4,262.31	4,357.45	4,162.92	19.53	22.73	89.78	223.49	999.06	549.34	509.42	39.92	13.761	
4,500.00	4,357.22	4,455.60	4,253.49	20.16	23.51	89.51	233.27	1,035.59	568.29	527.09	41.20	13.795	
4,600.00	4,452.13	4,553.76	4,344.07	20.79	24.28	89.25	243.06	1,072.13	587.25	544.77	42.47	13.826	
4,700.00	4,547.04	4,651.91	4,434.64	21.42	25.06	89.01	252.84	1,108.66	606.22	562.47	43.75	13.855	
4,800.00	4,641.94	4,750.07	4,525.22	22.06	25.84	88.79	262.63	1,145.20	625.20	580.17	45.03	13.884	
4,900.00	4,736.85	4,848.22	4,615.79	22.69	26.62	88.58	272.41	1,181.73	644.18	597.88	46.31	13.910	
5,000.00	4,831.76	4,946.37	4,706.36	23.32	27.40	88.38	282.20	1,218.27	663.18	615.59	47.59	13.936	

CC - Min centre to center distance or convergent point, SF - min separation factor, ES - min ellipse separation

Company:	US ROCKIES REGION PLANNING	Local Co-ordinate Reference:	Well P_NRC 1-9
Project:	COLORADO NORTHERN ZONE - 83	TVD Reference:	WELL @ 5012.00ft (Original Well Elev)
Reference Site:	WELD_NRC 17-9 PAD	MD Reference:	WELL @ 5012.00ft (Original Well Elev)
Site Error:	0.00ft	North Reference:	True
Reference Well:	P_NRC 1-9	Survey Calculation Method:	Minimum Curvature
Well Error:	0.00ft	Output errors are at	2.00 sigma
Reference Wellbore	P_NRC 1-9	Database:	EDM 2003.21 Single User Db
Reference Design:	PLAN #1 1-5-10 RHS	Offset TVD Reference:	Offset Datum

Offset Design WELD_NRC 17-9 PAD - P_NRC 41-9 - P_NRC 41-9 - PLAN #1 1-5-10 RHS												Offset Site Error:	0.00 ft
Survey Program: 0-MWD												Offset Well Error:	0.00 ft
Reference	Offset	Semi Major Axis		Distance									
Measured Depth (ft)	Vertical Depth (ft)	Measured Depth (ft)	Vertical Depth (ft)	Reference (ft)	Offset (ft)	Highside Toolface (°)	Offset Wellbore Centre +N/-S (ft)	+E/-W (ft)	Between Centres (ft)	Between Ellipses (ft)	Minimum Separation (ft)	Separation Factor	Warning
5,100.00	4,926.67	5,044.53	4,796.94	23.95	28.18	88.19	291.98	1,254.80	682.18	633.32	48.87	13.960	
5,200.00	5,021.58	5,142.68	4,887.51	24.58	28.96	88.01	301.77	1,291.34	701.19	651.05	50.15	13.983	
5,300.00	5,116.48	5,240.83	4,978.08	25.22	29.74	87.84	311.55	1,327.88	720.21	668.78	51.43	14.005	
5,400.00	5,211.39	5,338.99	5,068.66	25.85	30.52	87.68	321.34	1,364.41	739.23	686.53	52.71	14.026	
5,500.00	5,306.30	5,437.14	5,159.23	26.49	31.30	87.53	331.12	1,400.95	758.26	704.27	53.99	14.046	
5,600.00	5,401.21	5,540.41	5,254.62	27.12	32.08	87.39	341.36	1,439.17	777.18	721.91	55.27	14.061	
5,652.97	5,451.48	5,600.87	5,310.94	27.45	32.50	87.39	347.05	1,460.40	786.65	730.67	55.97	14.054	
5,700.00	5,496.24	5,654.73	5,361.49	27.72	32.80	87.59	351.85	1,478.33	794.60	738.05	56.55	14.052	
5,800.00	5,592.15	5,769.75	5,470.58	28.17	33.40	87.99	361.28	1,513.55	810.14	752.50	57.64	14.055	
5,900.00	5,688.99	5,885.41	5,581.65	28.58	33.95	88.33	369.62	1,544.67	823.80	765.18	58.63	14.052	
6,000.00	5,786.65	6,001.63	5,694.48	28.95	34.43	88.63	376.82	1,571.56	835.55	776.04	59.50	14.042	
6,100.00	5,884.99	6,118.32	5,808.81	29.27	34.83	88.90	382.85	1,594.08	845.34	785.08	60.26	14.027	
6,200.00	5,983.91	6,235.39	5,924.36	29.55	35.17	89.12	387.68	1,612.14	853.17	792.26	60.91	14.006	
6,300.00	6,083.28	6,352.74	6,040.88	29.79	35.44	89.30	391.30	1,625.65	859.01	797.56	61.45	13.979	
6,400.00	6,182.97	6,470.29	6,158.06	29.97	35.65	89.45	393.69	1,634.55	862.85	800.98	61.88	13.944	
6,500.00	6,282.88	6,587.94	6,275.61	30.11	35.80	89.57	394.83	1,638.80	864.68	802.49	62.20	13.902	
6,571.13	6,354.00	6,666.33	6,354.00	30.19	35.86	135.21	394.93	1,639.20	864.85	802.50	62.35	13.871	
6,600.00	6,382.87	6,695.20	6,382.87	30.21	35.89	135.21	394.93	1,639.20	864.85	802.45	62.40	13.859	
6,700.00	6,482.87	6,795.20	6,482.87	30.31	35.97	135.21	394.93	1,639.20	864.85	802.26	62.59	13.817	
6,800.00	6,582.87	6,895.20	6,582.87	30.41	36.06	135.21	394.93	1,639.20	864.85	802.06	62.79	13.775	
6,900.00	6,682.87	6,995.20	6,682.87	30.51	36.14	135.21	394.93	1,639.20	864.85	801.87	62.98	13.732	
7,000.00	6,782.87	7,095.20	6,782.87	30.62	36.23	135.21	394.93	1,639.20	864.85	801.67	63.18	13.689	
7,100.00	6,882.87	7,195.20	6,882.87	30.72	36.32	135.21	394.93	1,639.20	864.85	801.47	63.38	13.645	
7,200.00	6,982.87	7,295.20	6,982.87	30.83	36.41	135.21	394.93	1,639.20	864.85	801.26	63.59	13.601	
7,300.00	7,082.87	7,395.20	7,082.87	30.93	36.51	135.21	394.93	1,639.20	864.85	801.06	63.79	13.557	
7,400.00	7,182.87	7,495.20	7,182.87	31.04	36.60	135.21	394.93	1,639.20	864.85	800.85	64.00	13.513	
7,500.00	7,282.87	7,595.20	7,282.87	31.15	36.70	135.21	394.93	1,639.20	864.85	800.64	64.21	13.469	
7,600.00	7,382.87	7,695.20	7,382.87	31.26	36.79	135.21	394.93	1,639.20	864.85	800.43	64.43	13.424	
7,700.00	7,482.87	7,795.20	7,482.87	31.38	36.89	135.21	394.93	1,639.20	864.85	800.21	64.64	13.379	
7,800.00	7,582.87	7,895.20	7,582.87	31.49	36.99	135.21	394.93	1,639.20	864.85	799.99	64.86	13.334	
7,900.00	7,682.87	7,995.20	7,682.87	31.60	37.09	135.21	394.93	1,639.20	864.85	799.77	65.08	13.289	
8,000.00	7,782.87	8,095.20	7,782.87	31.72	37.19	135.21	394.93	1,639.20	864.85	799.55	65.30	13.244	
8,100.00	7,882.87	8,195.20	7,882.87	31.84	37.29	135.21	394.93	1,639.20	864.85	799.32	65.53	13.198	
8,200.00	7,982.87	8,295.20	7,982.87	31.95	37.39	135.21	394.93	1,639.20	864.85	799.09	65.76	13.152	
8,300.00	8,082.87	8,395.20	8,082.87	32.07	37.49	135.21	394.93	1,639.20	864.85	798.86	65.99	13.106	
8,400.00	8,182.87	8,495.20	8,182.87	32.19	37.60	135.21	394.93	1,639.20	864.85	798.63	66.22	13.061	
8,449.59	8,232.46	8,544.79	8,232.46	32.25	37.65	135.21	394.93	1,639.20	864.85	798.52	66.33	13.038	
8,500.00	8,282.87	8,561.33	8,249.00	32.31	37.67	135.21	394.93	1,639.20	865.51	799.10	66.41	13.032	
8,600.00	8,382.87	8,561.33	8,249.00	32.44	37.67	135.21	394.93	1,639.20	875.15	808.61	66.54	13.153	
8,700.00	8,482.87	8,561.33	8,249.00	32.56	37.67	135.21	394.93	1,639.20	895.91	829.25	66.66	13.440	
8,751.13	8,534.00	8,561.33	8,249.00	32.62	37.67	135.21	394.93	1,639.20	910.60	843.88	66.72	13.647	

Company:	US ROCKIES REGION PLANNING	Local Co-ordinate Reference:	Well P_NRC 1-9
Project:	COLORADO NORTHERN ZONE - 83	TVD Reference:	WELL @ 5012.00ft (Original Well Elev)
Reference Site:	WELD_NRC 17-9 PAD	MD Reference:	WELL @ 5012.00ft (Original Well Elev)
Site Error:	0.00ft	North Reference:	True
Reference Well:	P_NRC 1-9	Survey Calculation Method:	Minimum Curvature
Well Error:	0.00ft	Output errors are at	2.00 sigma
Reference Wellbore	P_NRC 1-9	Database:	EDM 2003.21 Single User Db
Reference Design:	PLAN #1 1-5-10 RHS	Offset TVD Reference:	Offset Datum

Offset Design WELD_NRC 17-9 PAD - P_NRC 7-9 - P_NRC 7-9 - Design #1													Offset Site Error:	0.00 ft
Survey Program: 0-MWD													Offset Well Error:	0.00 ft
Measured Depth (ft)	Vertical Depth (ft)	Measured Depth (ft)	Vertical Depth (ft)	Reference (ft)	Offset (ft)	Semi Major Axis Highside Toolface (°)	Offset Wellbore Centre +N/-S (ft)	+E/-W (ft)	Between Centres (ft)	Between Ellipses (ft)	Minimum Separation (ft)	Separation Factor	Warning	
0.00	0.00	0.00	0.00	0.00	0.00	-166.93	-31.34	-7.28	32.18					
100.00	100.00	100.00	100.00	0.10	0.10	-166.93	-31.34	-7.28	32.18	31.99	0.19	168.427		
200.00	200.00	200.00	200.00	0.32	0.32	-166.93	-31.34	-7.28	32.18	31.54	0.64	50.233		
300.00	300.00	300.00	300.00	0.55	0.55	-166.93	-31.34	-7.28	32.18	31.09	1.09	29.518		
400.00	400.00	400.00	400.00	0.77	0.77	-166.93	-31.34	-7.28	32.18	30.64	1.54	20.900		
500.00	500.00	500.00	500.00	0.99	0.99	-166.93	-31.34	-7.28	32.18	30.19	1.99	16.177		
600.00	600.00	600.00	600.00	1.22	1.22	-166.93	-31.34	-7.28	32.18	29.74	2.44	13.195		
700.00	700.00	700.00	700.00	1.44	1.44	-166.93	-31.34	-7.28	32.18	29.29	2.89	11.141		
800.00	800.00	800.00	800.00	1.67	1.67	-166.93	-31.34	-7.28	32.18	28.84	3.34	9.641		
900.00	900.00	900.00	900.00	1.89	1.89	-166.93	-31.34	-7.28	32.18	28.39	3.79	8.496		
1,000.00	1,000.00	1,000.00	1,000.00	2.12	2.12	-166.93	-31.34	-7.28	32.18	27.94	4.24	7.595		
1,085.00	1,085.00	1,085.00	1,085.00	2.31	2.31	-166.93	-31.34	-7.28	32.18	27.56	4.62	6.967 CC, ES		
1,100.00	1,100.00	1,099.86	1,099.86	2.34	2.34	147.55	-31.37	-7.30	32.24	27.56	4.68	6.887 SF		
1,200.00	1,199.97	1,198.73	1,198.70	2.56	2.52	151.25	-32.95	-8.86	36.15	31.08	5.07	7.126		
1,300.00	1,299.80	1,296.78	1,296.59	2.78	2.70	157.75	-36.93	-12.76	46.53	41.07	5.47	8.513		
1,400.00	1,399.37	1,393.33	1,392.74	3.01	2.90	163.61	-43.17	-18.90	63.84	57.99	5.86	10.903		
1,500.00	1,498.55	1,489.22	1,487.94	3.26	3.12	167.83	-51.34	-26.92	87.66	81.42	6.24	14.047		
1,600.00	1,597.23	1,585.16	1,583.15	3.53	3.35	170.57	-59.77	-35.21	115.43	108.81	6.62	17.431		
1,700.00	1,695.29	1,680.06	1,677.32	3.84	3.59	172.41	-68.10	-43.40	146.68	139.68	7.00	20.954		
1,800.00	1,792.60	1,773.80	1,770.34	4.20	3.84	173.71	-76.34	-51.50	181.29	173.92	7.37	24.591		
1,900.00	1,889.05	1,866.26	1,862.11	4.60	4.09	174.66	-84.46	-59.48	219.21	211.47	7.74	28.322		
2,003.15	1,987.52	1,960.19	1,955.32	5.08	4.36	175.41	-92.71	-67.59	261.72	253.60	8.11	32.254		
2,100.00	2,079.43	2,047.65	2,042.11	5.58	4.61	175.99	-100.40	-75.14	303.24	294.69	8.55	35.482		
2,200.00	2,174.34	2,137.95	2,131.73	6.12	4.87	176.45	-108.33	-82.94	346.13	337.13	9.00	38.459		
2,300.00	2,269.25	2,228.26	2,221.35	6.67	5.14	176.81	-116.27	-90.74	389.03	379.57	9.46	41.123		
2,400.00	2,364.15	2,318.56	2,310.96	7.24	5.41	177.09	-124.20	-98.53	431.94	422.02	9.93	43.517		
2,500.00	2,459.06	2,408.87	2,400.58	7.82	5.68	177.33	-132.13	-106.33	474.86	464.47	10.40	45.675		
2,600.00	2,553.97	2,499.17	2,490.20	8.40	5.96	177.52	-140.07	-114.13	517.79	506.92	10.87	47.628		
2,700.00	2,648.88	2,589.48	2,579.82	9.00	6.24	177.69	-148.00	-121.93	560.72	549.37	11.35	49.401		
2,800.00	2,743.79	2,679.78	2,669.43	9.60	6.52	177.83	-155.94	-129.72	603.65	591.82	11.83	51.018		
2,900.00	2,838.69	2,770.09	2,759.05	10.20	6.80	177.95	-163.87	-137.52	646.59	634.27	12.32	52.496		
3,000.00	2,933.60	2,860.39	2,848.67	10.81	7.08	178.06	-171.80	-145.32	689.53	676.73	12.80	53.853		
3,100.00	3,028.51	2,950.70	2,938.29	11.42	7.36	178.16	-179.74	-153.12	732.47	719.18	13.29	55.101		
3,200.00	3,123.42	3,041.00	3,027.90	12.04	7.65	178.24	-187.67	-160.91	775.41	761.63	13.78	56.253		
3,300.00	3,218.33	3,131.31	3,117.52	12.65	7.93	178.32	-195.61	-168.71	818.35	804.08	14.28	57.319		
3,400.00	3,313.23	3,221.61	3,207.14	13.27	8.22	178.39	-203.54	-176.51	861.30	846.53	14.77	58.307		
3,500.00	3,408.14	3,311.92	3,296.75	13.89	8.50	178.45	-211.47	-184.31	904.24	888.98	15.27	59.227		
3,600.00	3,503.05	3,402.22	3,386.37	14.52	8.79	178.50	-219.41	-192.10	947.19	931.42	15.76	60.083		
3,700.00	3,597.96	3,492.53	3,475.99	15.14	9.08	178.56	-227.34	-199.90	990.14	973.87	16.26	60.883		
3,800.00	3,692.87	3,582.83	3,565.61	15.76	9.37	178.60	-235.28	-207.70	1,033.08	1,016.32	16.76	61.632		
3,900.00	3,787.77	3,673.14	3,655.22	16.39	9.66	178.65	-243.21	-215.50	1,076.03	1,058.77	17.26	62.334		
4,000.00	3,882.68	3,763.44	3,744.84	17.02	9.95	178.69	-251.14	-223.29	1,118.98	1,101.21	17.76	62.993		
4,100.00	3,977.59	3,853.75	3,834.46	17.65	10.24	178.72	-259.08	-231.09	1,161.93	1,143.66	18.27	63.614		
4,200.00	4,072.50	3,944.05	3,924.08	18.27	10.53	178.76	-267.01	-238.89	1,204.87	1,186.11	18.77	64.198		
4,300.00	4,167.40	4,034.36	4,013.69	18.90	10.82	178.79	-274.95	-246.68	1,247.82	1,228.55	19.27	64.751		
4,400.00	4,262.31	4,124.66	4,103.31	19.53	11.11	178.82	-282.88	-254.48	1,290.77	1,271.00	19.78	65.273		
4,500.00	4,357.22	4,214.97	4,192.93	20.16	11.40	178.85	-290.81	-262.28	1,333.72	1,313.44	20.28	65.767		
4,600.00	4,452.13	4,305.27	4,282.54	20.79	11.69	178.87	-298.75	-270.08	1,376.67	1,355.89	20.78	66.235		
4,700.00	4,547.04	4,395.58	4,372.16	21.42	11.99	178.90	-306.68	-277.87	1,419.62	1,398.33	21.29	66.680		
4,800.00	4,641.94	4,485.88	4,461.78	22.06	12.28	178.92	-314.62	-285.67	1,462.57	1,440.78	21.80	67.103		
4,900.00	4,736.85	4,576.19	4,551.40	22.69	12.57	178.94	-322.55	-293.47	1,505.52	1,483.22	22.30	67.505		
5,000.00	4,831.76	4,666.49	4,641.01	23.32	12.86	178.96	-330.48	-301.27	1,548.47	1,525.67	22.81	67.889		

CC - Min centre to center distance or convergent point, SF - min separation factor, ES - min ellipse separation

Company:	US ROCKIES REGION PLANNING	Local Co-ordinate Reference:	Well P_NRC 1-9
Project:	COLORADO NORTHERN ZONE - 83	TVD Reference:	WELL @ 5012.00ft (Original Well Elev)
Reference Site:	WELD_NRC 17-9 PAD	MD Reference:	WELL @ 5012.00ft (Original Well Elev)
Site Error:	0.00ft	North Reference:	True
Reference Well:	P_NRC 1-9	Survey Calculation Method:	Minimum Curvature
Well Error:	0.00ft	Output errors are at	2.00 sigma
Reference Wellbore	P_NRC 1-9	Database:	EDM 2003.21 Single User Db
Reference Design:	PLAN #1 1-5-10 RHS	Offset TVD Reference:	Offset Datum

Offset Design WELD_NRC 17-9 PAD - P_NRC 7-9 - P_NRC 7-9 - Design #1												Offset Site Error:	0.00 ft
Survey Program: 0-MWD												Offset Well Error:	0.00 ft
Reference		Offset		Semi Major Axis			Distance						Warning
Measured Depth (ft)	Vertical Depth (ft)	Measured Depth (ft)	Vertical Depth (ft)	Reference (ft)	Offset (ft)	Highside Toolface (°)	Offset Wellbore Centre +N/-S (ft)	+E/-W (ft)	Between Centres (ft)	Between Ellipses (ft)	Minimum Separation (ft)	Separation Factor	
5,100.00	4,926.67	4,756.80	4,730.63	23.95	13.16	178.98	-338.42	-309.06	1,591.43	1,568.11	23.32	68.254	
5,200.00	5,021.58	4,847.10	4,820.25	24.58	13.45	179.00	-346.35	-316.86	1,634.38	1,610.55	23.82	68.603	
5,300.00	5,116.48	4,937.41	4,909.86	25.22	13.74	179.02	-354.29	-324.66	1,677.33	1,653.00	24.33	68.937	
5,400.00	5,211.39	5,027.71	4,999.48	25.85	14.04	179.04	-362.22	-332.46	1,720.28	1,695.44	24.84	69.256	
5,500.00	5,306.30	5,118.02	5,089.10	26.49	14.33	179.05	-370.15	-340.25	1,763.23	1,737.88	25.35	69.561	
5,600.00	5,401.21	5,208.32	5,178.72	27.12	14.62	179.07	-378.09	-348.05	1,806.18	1,780.32	25.86	69.854	
5,652.97	5,451.48	5,256.16	5,226.19	27.45	14.78	179.07	-382.29	-352.18	1,828.93	1,802.81	26.13	70.004	
5,700.00	5,496.24	5,298.79	5,268.50	27.72	14.92	179.09	-386.04	-355.86	1,848.78	1,822.34	26.44	69.924	
5,800.00	5,592.15	5,390.50	5,359.50	28.17	15.22	179.11	-394.09	-363.78	1,888.65	1,861.59	27.06	69.791	
5,900.00	5,688.99	5,483.53	5,451.83	28.58	15.52	179.14	-402.27	-371.81	1,925.29	1,897.65	27.65	69.639	
6,000.00	5,786.65	5,577.80	5,545.37	28.95	15.83	179.15	-410.55	-379.95	1,958.67	1,930.47	28.19	69.471	
6,100.00	5,884.99	5,673.16	5,640.02	29.27	16.14	179.17	-418.93	-388.19	1,988.73	1,960.03	28.70	69.288	
6,200.00	5,983.91	5,769.52	5,735.64	29.55	16.45	179.18	-427.39	-396.51	2,015.45	1,986.28	29.17	69.095	
6,300.00	6,083.28	5,866.76	5,832.13	29.79	16.77	179.19	-435.93	-404.90	2,038.79	2,009.20	29.59	68.891	
6,400.00	6,182.97	5,964.74	5,929.37	29.97	17.09	179.20	-444.54	-413.36	2,058.72	2,028.75	29.98	68.680	
6,500.00	6,282.88	6,064.85	6,188.35	30.11	17.71	179.20	-461.23	-429.76	2,072.82	2,042.21	30.61	67.719	
6,571.13	6,354.00	6,390.55	6,354.00	30.19	17.97	-135.20	-463.36	-431.85	2,074.53	2,043.56	30.97	66.995	
6,600.00	6,382.87	6,419.42	6,382.87	30.21	18.01	-135.20	-463.36	-431.85	2,074.53	2,043.46	31.07	66.780	
6,700.00	6,482.87	6,519.42	6,482.87	30.31	18.16	-135.20	-463.36	-431.85	2,074.53	2,043.11	31.42	66.021	
6,800.00	6,582.87	6,619.42	6,582.87	30.41	18.31	-135.20	-463.36	-431.85	2,074.53	2,042.75	31.78	65.274	
6,900.00	6,682.87	6,719.42	6,682.87	30.51	18.46	-135.20	-463.36	-431.85	2,074.53	2,042.39	32.14	64.540	
7,000.00	6,782.87	6,819.42	6,782.87	30.62	18.61	-135.20	-463.36	-431.85	2,074.53	2,042.02	32.51	63.817	
7,100.00	6,882.87	6,919.42	6,882.87	30.72	18.76	-135.20	-463.36	-431.85	2,074.53	2,041.66	32.87	63.107	
7,200.00	6,982.87	7,019.42	6,982.87	30.83	18.91	-135.20	-463.36	-431.85	2,074.53	2,041.29	33.24	62.408	
7,300.00	7,082.87	7,119.42	7,082.87	30.93	19.06	-135.20	-463.36	-431.85	2,074.53	2,040.92	33.61	61.721	
7,400.00	7,182.87	7,219.42	7,182.87	31.04	19.22	-135.20	-463.36	-431.85	2,074.53	2,040.55	33.98	61.046	
7,500.00	7,282.87	7,319.42	7,282.87	31.15	19.38	-135.20	-463.36	-431.85	2,074.53	2,040.17	34.36	60.381	
7,600.00	7,382.87	7,419.42	7,382.87	31.26	19.54	-135.20	-463.36	-431.85	2,074.53	2,039.80	34.73	59.728	
7,700.00	7,482.87	7,519.42	7,482.87	31.38	19.70	-135.20	-463.36	-431.85	2,074.53	2,039.42	35.11	59.087	
7,800.00	7,582.87	7,619.42	7,582.87	31.49	19.86	-135.20	-463.36	-431.85	2,074.53	2,039.04	35.49	58.456	
7,900.00	7,682.87	7,719.42	7,682.87	31.60	20.02	-135.20	-463.36	-431.85	2,074.53	2,038.66	35.87	57.835	
8,000.00	7,782.87	7,819.42	7,782.87	31.72	20.18	-135.20	-463.36	-431.85	2,074.53	2,038.28	36.25	57.226	
8,100.00	7,882.87	7,919.42	7,882.87	31.84	20.35	-135.20	-463.36	-431.85	2,074.53	2,037.89	36.64	56.626	
8,200.00	7,982.87	8,019.42	7,982.87	31.95	20.51	-135.20	-463.36	-431.85	2,074.53	2,037.51	37.02	56.037	
8,300.00	8,082.87	8,119.42	8,082.87	32.07	20.68	-135.20	-463.36	-431.85	2,074.53	2,037.12	37.41	55.458	
8,400.00	8,182.87	8,219.42	8,182.87	32.19	20.85	-135.20	-463.36	-431.85	2,074.53	2,036.73	37.80	54.889	
8,500.00	8,282.87	8,319.42	8,282.87	32.31	21.02	-135.20	-463.36	-431.85	2,074.53	2,036.35	38.18	54.329	
8,600.00	8,382.87	8,419.42	8,382.87	32.44	21.19	-135.20	-463.36	-431.85	2,074.53	2,035.95	38.58	53.779	
8,700.00	8,482.87	8,519.42	8,482.87	32.56	21.36	-135.20	-463.36	-431.85	2,074.53	2,035.56	38.97	53.238	
8,751.13	8,534.00	8,535.55	8,499.00	32.62	21.39	-135.20	-463.36	-431.85	2,074.83	2,035.73	39.10	53.068	

Company:	US ROCKIES REGION PLANNING	Local Co-ordinate Reference:	Well P_NRC 1-9
Project:	COLORADO NORTHERN ZONE - 83	TVD Reference:	WELL @ 5012.00ft (Original Well Elev)
Reference Site:	WELD_NRC 17-9 PAD	MD Reference:	WELL @ 5012.00ft (Original Well Elev)
Site Error:	0.00ft	North Reference:	True
Reference Well:	P_NRC 1-9	Survey Calculation Method:	Minimum Curvature
Well Error:	0.00ft	Output errors are at	2.00 sigma
Reference Wellbore	P_NRC 1-9	Database:	EDM 2003.21 Single User Db
Reference Design:	PLAN #1 1-5-10 RHS	Offset TVD Reference:	Offset Datum

Offset Design WELD_NRC 17-9 PAD - P_NRC 8-9 - P_NRC 8-9 - PLAN #1 1-5-10 RHS												Offset Site Error:	0.00 ft
Survey Program: 0-MWD												Offset Well Error:	0.00 ft
Measured Depth (ft)	Vertical Depth (ft)	Measured Depth (ft)	Vertical Depth (ft)	Reference (ft)	Offset (ft)	Highside Toolface (°)	Offset Wellbore Centre +N/-S (ft)	+E/-W (ft)	Between Centres (ft)	Between Ellipses (ft)	Minimum Separation (ft)	Separation Factor	Warning
0.00	0.00	0.00	0.00	0.00	0.00	-166.85	-62.30	-14.55	63.98				
100.00	100.00	100.00	100.00	0.10	0.09	-166.85	-62.30	-14.55	63.98	63.79	0.19	342.960	
200.00	200.00	200.00	200.00	0.32	0.32	-166.85	-62.30	-14.55	63.98	63.35	0.64	100.585	
300.00	300.00	300.00	300.00	0.55	0.54	-166.85	-62.30	-14.55	63.98	62.90	1.09	58.935	
400.00	400.00	400.00	400.00	0.77	0.77	-166.85	-62.30	-14.55	63.98	62.45	1.54	41.677	
500.00	500.00	500.00	500.00	0.99	0.99	-166.85	-62.30	-14.55	63.98	62.00	1.98	32.237	
600.00	600.00	600.00	600.00	1.22	1.21	-166.85	-62.30	-14.55	63.98	61.55	2.43	26.284	
700.00	700.00	700.00	700.00	1.44	1.44	-166.85	-62.30	-14.55	63.98	61.10	2.88	22.187	
800.00	800.00	800.00	800.00	1.67	1.66	-166.85	-62.30	-14.55	63.98	60.65	3.33	19.195	
900.00	900.00	900.00	900.00	1.89	1.89	-166.85	-62.30	-14.55	63.98	60.20	3.78	16.914	
1,000.00	1,000.00	1,000.00	1,000.00	2.12	2.11	-166.85	-62.30	-14.55	63.98	59.75	4.23	15.117	
1,085.00	1,085.00	1,085.00	1,085.00	2.31	2.30	-166.85	-62.30	-14.55	63.98	59.37	4.61	13.865 CC	
1,100.00	1,100.00	1,100.00	1,100.00	2.34	2.34	147.54	-62.31	-14.52	64.01	59.34	4.68	13.683 ES	
1,200.00	1,199.97	1,199.94	1,199.91	2.56	2.53	146.60	-62.84	-12.31	65.95	60.86	5.09	12.965	
1,300.00	1,299.80	1,299.70	1,299.49	2.78	2.73	144.46	-64.17	-6.73	70.92	65.42	5.50	12.886 SF	
1,400.00	1,399.37	1,399.08	1,398.45	3.01	2.95	141.59	-66.29	2.18	79.06	73.13	5.94	13.316	
1,500.00	1,498.55	1,497.94	1,496.51	3.26	3.19	138.48	-69.20	14.35	90.49	84.09	6.40	14.142	
1,600.00	1,597.23	1,596.12	1,593.41	3.53	3.45	135.47	-72.85	29.68	105.28	98.38	6.90	15.253	
1,700.00	1,695.29	1,693.46	1,688.89	3.84	3.76	132.77	-77.24	48.06	123.42	115.96	7.46	16.544	
1,800.00	1,792.60	1,790.45	1,783.43	4.20	4.10	130.53	-82.27	69.17	144.79	136.70	8.08	17.911	
1,900.00	1,889.05	1,887.56	1,877.97	4.60	4.48	129.52	-87.42	90.75	168.57	159.80	8.76	19.236	
2,003.15	1,987.52	1,987.17	1,974.94	5.08	4.88	129.46	-92.69	112.88	195.36	185.85	9.51	20.541	
2,100.00	2,079.43	2,080.36	2,065.67	5.58	5.28	130.08	-97.63	133.58	221.61	211.33	10.28	21.554	
2,200.00	2,174.34	2,176.59	2,159.36	6.12	5.69	130.58	-102.73	154.96	248.73	237.63	11.10	22.401	
2,300.00	2,269.25	2,272.82	2,253.05	6.67	6.12	130.99	-107.83	176.34	275.87	263.92	11.95	23.090	
2,400.00	2,364.15	2,369.06	2,346.74	7.24	6.55	131.32	-112.93	197.72	303.01	290.20	12.81	23.658	
2,500.00	2,459.06	2,465.29	2,440.42	7.82	6.99	131.60	-118.03	219.10	330.17	316.48	13.68	24.131	
2,600.00	2,553.97	2,561.52	2,534.11	8.40	7.43	131.83	-123.13	240.48	357.32	342.76	14.57	24.528	
2,700.00	2,648.88	2,657.75	2,627.80	9.00	7.87	132.03	-128.23	261.86	384.49	369.03	15.46	24.866	
2,800.00	2,743.79	2,753.98	2,721.49	9.60	8.33	132.21	-133.32	283.24	411.66	395.29	16.36	25.155	
2,900.00	2,838.69	2,850.21	2,815.18	10.20	8.78	132.36	-138.42	304.62	438.83	421.55	17.27	25.404	
3,000.00	2,933.60	2,946.45	2,908.86	10.81	9.23	132.50	-143.52	326.00	466.00	447.81	18.19	25.621	
3,100.00	3,028.51	3,042.68	3,002.55	11.42	9.69	132.62	-148.62	347.38	493.18	474.07	19.11	25.811	
3,200.00	3,123.42	3,138.91	3,096.24	12.04	10.15	132.73	-153.72	368.76	520.36	500.33	20.03	25.979	
3,300.00	3,218.33	3,235.14	3,189.93	12.65	10.61	132.83	-158.82	390.14	547.54	526.58	20.96	26.127	
3,400.00	3,313.23	3,331.37	3,283.62	13.27	11.08	132.92	-163.92	411.52	574.72	552.83	21.89	26.259	
3,500.00	3,408.14	3,427.60	3,377.30	13.89	11.54	133.00	-169.02	432.90	601.90	579.08	22.82	26.378	
3,600.00	3,503.05	3,523.83	3,470.99	14.52	12.00	133.07	-174.12	454.28	629.08	605.33	23.75	26.484	
3,700.00	3,597.96	3,620.07	3,564.68	15.14	12.47	133.14	-179.21	475.66	656.26	631.57	24.69	26.581	
3,800.00	3,692.87	3,716.30	3,658.37	15.76	12.94	133.20	-184.31	497.04	683.45	657.82	25.63	26.668	
3,900.00	3,787.77	3,812.53	3,752.05	16.39	13.40	133.26	-189.41	518.42	710.63	684.07	26.57	26.747	
4,000.00	3,882.68	3,908.76	3,845.74	17.02	13.87	133.31	-194.51	539.80	737.82	710.31	27.51	26.820	
4,100.00	3,977.59	4,004.99	3,939.43	17.65	14.34	133.36	-199.61	561.18	765.01	736.55	28.45	26.887	
4,200.00	4,072.50	4,101.22	4,033.12	18.27	14.81	133.40	-204.71	582.56	792.19	762.80	29.40	26.948	
4,300.00	4,167.40	4,197.46	4,126.81	18.90	15.28	133.45	-209.81	603.94	819.38	789.04	30.34	27.005	
4,400.00	4,262.31	4,293.69	4,220.49	19.53	15.75	133.49	-214.91	625.32	846.57	815.28	31.29	27.057	
4,500.00	4,357.22	4,389.92	4,314.18	20.16	16.22	133.52	-220.00	646.70	873.76	841.52	32.24	27.105	
4,600.00	4,452.13	4,486.15	4,407.87	20.79	16.69	133.56	-225.10	668.08	900.94	867.76	33.18	27.150	
4,700.00	4,547.04	4,582.38	4,501.56	21.42	17.16	133.59	-230.20	689.46	928.13	894.00	34.13	27.192	
4,800.00	4,641.94	4,678.61	4,595.25	22.06	17.64	133.62	-235.30	710.84	955.32	920.24	35.08	27.231	
4,900.00	4,736.85	4,774.85	4,688.93	22.69	18.11	133.65	-240.40	732.22	982.51	946.48	36.03	27.268	
5,000.00	4,831.76	4,871.08	4,782.62	23.32	18.58	133.68	-245.50	753.60	1,009.70	972.72	36.98	27.302	

CC - Min centre to center distance or convergent point, SF - min separation factor, ES - min ellipse separation

Company:	US ROCKIES REGION PLANNING	Local Co-ordinate Reference:	Well P_NRC 1-9
Project:	COLORADO NORTHERN ZONE - 83	TVD Reference:	WELL @ 5012.00ft (Original Well Elev)
Reference Site:	WELD_NRC 17-9 PAD	MD Reference:	WELL @ 5012.00ft (Original Well Elev)
Site Error:	0.00ft	North Reference:	True
Reference Well:	P_NRC 1-9	Survey Calculation Method:	Minimum Curvature
Well Error:	0.00ft	Output errors are at	2.00 sigma
Reference Wellbore	P_NRC 1-9	Database:	EDM 2003.21 Single User Db
Reference Design:	PLAN #1 1-5-10 RHS	Offset TVD Reference:	Offset Datum

Offset Design WELD_NRC 17-9 PAD - P_NRC 8-9 - P_NRC 8-9 - PLAN #1 1-5-10 RHS												Offset Site Error:	0.00 ft
Survey Program: 0-MWD												Offset Well Error:	0.00 ft
Reference		Offset		Semi Major Axis			Distance						
Measured Depth (ft)	Vertical Depth (ft)	Measured Depth (ft)	Vertical Depth (ft)	Reference (ft)	Offset (ft)	Highside Toolface (°)	Offset Wellbore Centre +N/-S (ft)	+E/-W (ft)	Between Centres (ft)	Between Ellipses (ft)	Minimum Separation (ft)	Separation Factor	Warning
5,100.00	4,926.67	4,967.31	4,876.31	23.95	19.05	133.71	-250.60	774.98	1,036.89	998.96	37.93	27.334	
5,200.00	5,021.58	5,063.54	4,970.00	24.58	19.53	133.73	-255.70	796.36	1,064.08	1,025.19	38.89	27.364	
5,300.00	5,116.48	5,159.77	5,063.68	25.22	20.00	133.76	-260.80	817.74	1,091.27	1,051.43	39.84	27.393	
5,400.00	5,211.39	5,256.00	5,157.37	25.85	20.47	133.78	-265.89	839.12	1,118.46	1,077.67	40.79	27.420	
5,500.00	5,306.30	5,352.23	5,251.06	26.49	20.95	133.80	-270.99	860.50	1,145.65	1,103.91	41.74	27.445	
5,600.00	5,401.21	5,448.47	5,344.75	27.12	21.42	133.82	-276.09	881.88	1,172.84	1,130.14	42.70	27.469	
5,652.97	5,451.48	5,499.44	5,394.38	27.45	21.67	133.83	-278.79	893.21	1,187.24	1,144.04	43.20	27.481	
5,700.00	5,496.24	5,544.77	5,438.51	27.72	21.89	134.02	-281.19	903.28	1,199.77	1,156.11	43.66	27.479	
5,800.00	5,592.15	5,641.59	5,532.77	28.17	22.37	134.29	-286.32	924.79	1,224.69	1,180.12	44.57	27.478	
5,900.00	5,688.99	5,738.90	5,627.51	28.58	22.85	134.40	-291.48	946.41	1,247.25	1,201.80	45.46	27.438	
6,000.00	5,786.65	5,843.04	5,729.06	28.95	23.28	134.39	-296.83	968.82	1,267.30	1,221.03	46.28	27.386	
6,100.00	5,884.99	5,952.29	5,836.37	29.27	23.64	134.36	-301.57	988.72	1,284.22	1,237.26	46.97	27.342	
6,200.00	5,983.91	6,062.51	5,945.34	29.55	23.94	134.36	-305.39	1,004.74	1,297.90	1,250.34	47.56	27.289	
6,300.00	6,083.28	6,173.48	6,055.62	29.79	24.20	134.37	-308.26	1,016.75	1,308.29	1,260.24	48.05	27.227	
6,400.00	6,182.97	6,284.99	6,166.83	29.97	24.41	134.39	-310.13	1,024.62	1,315.36	1,266.93	48.44	27.157	
6,500.00	6,282.88	6,396.80	6,278.57	30.11	24.56	134.44	-311.00	1,028.27	1,319.10	1,270.39	48.71	27.079	
6,571.13	6,354.00	6,472.23	6,354.00	30.19	24.65	-179.94	-311.07	1,028.55	1,319.78	1,270.93	48.85	27.017	
6,600.00	6,382.87	6,501.10	6,382.87	30.21	24.68	-179.94	-311.07	1,028.55	1,319.78	1,270.86	48.91	26.981	
6,700.00	6,482.87	6,601.10	6,482.87	30.31	24.80	-179.94	-311.07	1,028.55	1,319.78	1,270.62	49.16	26.847	
6,800.00	6,582.87	6,701.10	6,582.87	30.41	24.92	-179.94	-311.07	1,028.55	1,319.78	1,270.37	49.41	26.713	
6,900.00	6,682.87	6,801.10	6,682.87	30.51	25.04	-179.94	-311.07	1,028.55	1,319.78	1,270.12	49.66	26.578	
7,000.00	6,782.87	6,901.10	6,782.87	30.62	25.16	-179.94	-311.07	1,028.55	1,319.78	1,269.87	49.91	26.444	
7,100.00	6,882.87	7,001.10	6,882.87	30.72	25.29	-179.94	-311.07	1,028.55	1,319.78	1,269.61	50.16	26.309	
7,200.00	6,982.87	7,101.10	6,982.87	30.83	25.41	-179.94	-311.07	1,028.55	1,319.78	1,269.35	50.42	26.174	
7,300.00	7,082.87	7,201.10	7,082.87	30.93	25.54	-179.94	-311.07	1,028.55	1,319.78	1,269.09	50.68	26.039	
7,400.00	7,182.87	7,301.10	7,182.87	31.04	25.67	-179.94	-311.07	1,028.55	1,319.78	1,268.83	50.95	25.905	
7,500.00	7,282.87	7,401.10	7,282.87	31.15	25.80	-179.94	-311.07	1,028.55	1,319.78	1,268.56	51.21	25.770	
7,600.00	7,382.87	7,501.10	7,382.87	31.26	25.93	-179.94	-311.07	1,028.55	1,319.78	1,268.29	51.48	25.636	
7,700.00	7,482.87	7,601.10	7,482.87	31.38	26.06	-179.94	-311.07	1,028.55	1,319.78	1,268.02	51.75	25.501	
7,800.00	7,582.87	7,701.10	7,582.87	31.49	26.20	-179.94	-311.07	1,028.55	1,319.78	1,267.75	52.03	25.367	
7,900.00	7,682.87	7,801.10	7,682.87	31.60	26.33	-179.94	-311.07	1,028.55	1,319.78	1,267.47	52.30	25.233	
8,000.00	7,782.87	7,901.10	7,782.87	31.72	26.47	-179.94	-311.07	1,028.55	1,319.78	1,267.19	52.58	25.099	
8,100.00	7,882.87	8,001.10	7,882.87	31.84	26.61	-179.94	-311.07	1,028.55	1,319.78	1,266.91	52.86	24.966	
8,200.00	7,982.87	8,101.10	7,982.87	31.95	26.74	-179.94	-311.07	1,028.55	1,319.78	1,266.63	53.15	24.833	
8,300.00	8,082.87	8,201.10	8,082.87	32.07	26.88	-179.94	-311.07	1,028.55	1,319.78	1,266.34	53.43	24.700	
8,400.00	8,182.87	8,301.10	8,182.87	32.19	27.02	-179.94	-311.07	1,028.55	1,319.78	1,266.06	53.72	24.568	
8,500.00	8,282.87	8,401.10	8,282.87	32.31	27.17	-179.94	-311.07	1,028.55	1,319.78	1,265.77	54.01	24.436	
8,600.00	8,382.87	8,501.10	8,382.87	32.44	27.31	-179.94	-311.07	1,028.55	1,319.78	1,265.48	54.30	24.304	
8,700.00	8,482.87	8,601.10	8,482.87	32.56	27.45	-179.94	-311.07	1,028.55	1,319.78	1,265.18	54.60	24.173	
8,728.27	8,511.15	8,629.38	8,511.15	32.60	27.49	-179.94	-311.07	1,028.55	1,319.78	1,265.10	54.68	24.137	
8,751.13	8,534.00	8,639.23	8,521.00	32.62	27.51	-179.94	-311.07	1,028.55	1,319.84	1,265.11	54.73	24.116	

Company:	US ROCKIES REGION PLANNING	Local Co-ordinate Reference:	Well P_NRC 1-9
Project:	COLORADO NORTHERN ZONE - 83	TVD Reference:	WELL @ 5012.00ft (Original Well Elev)
Reference Site:	WELD_NRC 17-9 PAD	MD Reference:	WELL @ 5012.00ft (Original Well Elev)
Site Error:	0.00ft	North Reference:	True
Reference Well:	P_NRC 1-9	Survey Calculation Method:	Minimum Curvature
Well Error:	0.00ft	Output errors are at	2.00 sigma
Reference Wellbore	P_NRC 1-9	Database:	EDM 2003.21 Single User Db
Reference Design:	PLAN #1 1-5-10 RHS	Offset TVD Reference:	Offset Datum

Offset Design												Offset Site Error:	0.00 ft
Survey Program: 0-UNKNOWN												Offset Well Error:	0.00 ft
Reference	Offset	Semi Major Axis			Distance								Warning
Measured Depth (ft)	Vertical Depth (ft)	Measured Depth (ft)	Vertical Depth (ft)	Reference (ft)	Offset (ft)	Highside Toolface (°)	Offset Wellbore Centre +N/-S (ft)	+E/-W (ft)	Between Centres (ft)	Between Ellipses (ft)	Minimum Separation (ft)	Separation Factor	
0.00	0.00	0.00	0.00	0.00	0.00	88.45	1.44	53.46	56.75				
100.00	100.00	81.00	81.00	0.10	1.62	88.45	1.44	53.46	53.48	51.76	1.72	31.171	
200.00	200.00	181.00	181.00	0.32	5.24	88.45	1.44	53.46	53.48	47.92	5.56	9.617	
300.00	300.00	281.00	281.00	0.55	9.24	88.45	1.44	53.46	53.48	43.69	9.79	5.465	
400.00	400.00	381.00	381.00	0.77	13.24	88.45	1.44	53.46	53.48	39.47	14.01	3.817	
500.00	500.00	481.00	481.00	0.99	17.24	88.45	1.44	53.46	53.48	35.24	18.23	2.933	
600.00	600.00	581.00	581.00	1.22	21.24	88.45	1.44	53.46	53.48	31.02	22.46	2.381	
700.00	700.00	681.00	681.00	1.44	25.24	88.45	1.44	53.46	53.48	26.79	26.68	2.004	
800.00	800.00	781.00	781.00	1.67	29.24	88.45	1.44	53.46	53.48	22.57	30.91	1.730	
900.00	900.00	881.00	881.00	1.89	33.24	88.45	1.44	53.46	53.48	18.34	35.13	1.522	
1,000.00	1,000.00	981.00	981.00	2.12	37.24	88.45	1.44	53.46	53.48	14.12	39.36	1.359 Level 3	
1,085.00	1,085.00	1,066.00	1,066.00	2.31	40.64	88.45	1.44	53.46	53.48	10.53	42.95	1.245 Level 2	
1,100.00	1,100.00	1,081.00	1,081.00	2.34	41.24	42.89	1.44	53.46	53.45	9.86	43.58	1.226 Level 2	
1,200.00	1,199.97	1,180.97	1,180.97	2.56	45.24	44.62	1.44	53.46	51.81	4.03	47.78	1.084 Level 2	
1,300.00	1,299.80	1,280.80	1,280.80	2.78	49.23	49.51	1.44	53.46	47.88	-4.07	51.95	0.922 Level 1	
1,400.00	1,399.37	1,380.37	1,380.37	3.01	53.21	59.10	1.44	53.46	42.46	-13.67	56.13	0.756 Level 1	
1,500.00	1,498.55	1,479.55	1,479.55	3.26	57.18	75.96	1.44	53.46	37.52	-22.88	60.40	0.621 Level 1	
1,559.46	1,557.30	1,538.30	1,538.30	3.42	59.53	90.00	1.44	53.46	36.37	-26.60	62.97	0.578 Level 1, CC	
1,600.00	1,597.23	1,578.23	1,578.23	3.53	61.13	100.67	1.44	53.46	37.03	-27.62	64.65	0.573 Level 1, ES, SF	
1,700.00	1,695.29	1,676.29	1,676.29	3.84	65.05	125.51	1.44	53.46	45.04	-23.36	68.40	0.658 Level 1	
1,800.00	1,792.60	1,773.60	1,773.60	4.20	68.94	142.86	1.44	53.46	61.48	-10.20	71.68	0.858 Level 1	
1,900.00	1,889.05	1,870.05	1,870.05	4.60	72.80	153.48	1.44	53.46	84.21	9.43	74.78	1.126 Level 2	
2,003.15	1,987.52	1,968.52	1,968.52	5.08	76.74	160.24	1.44	53.46	112.71	34.87	77.84	1.448 Level 3	
2,100.00	2,079.43	2,060.43	2,060.43	5.58	80.42	164.39	1.44	53.46	141.93	60.51	81.42	1.743	
2,200.00	2,174.34	2,155.34	2,155.34	6.12	84.21	167.20	1.44	53.46	172.57	87.37	85.20	2.026	
2,300.00	2,269.25	2,250.25	2,250.25	6.67	88.01	169.16	1.44	53.46	203.47	114.46	89.02	2.286	
2,400.00	2,364.15	2,345.15	2,345.15	7.24	91.81	170.61	1.44	53.46	234.54	141.68	92.86	2.526	
2,500.00	2,459.06	2,440.06	2,440.06	7.82	95.60	171.72	1.44	53.46	265.70	168.98	96.72	2.747	
2,600.00	2,553.97	2,534.97	2,534.97	8.40	99.40	172.59	1.44	53.46	296.94	196.35	100.59	2.952	
2,700.00	2,648.88	2,629.88	2,629.88	9.00	103.20	173.30	1.44	53.46	328.23	223.76	104.47	3.142	
2,800.00	2,743.79	2,724.79	2,724.79	9.60	106.99	173.88	1.44	53.46	359.56	251.20	108.35	3.318	
2,900.00	2,838.69	2,819.69	2,819.69	10.20	110.79	174.38	1.44	53.46	390.91	278.67	112.24	3.483	
3,000.00	2,933.60	2,914.60	2,914.60	10.81	114.58	174.80	1.44	53.46	422.29	306.16	116.13	3.636	
3,100.00	3,028.51	3,009.51	3,009.51	11.42	118.38	175.16	1.44	53.46	453.68	333.66	120.03	3.780	
3,200.00	3,123.42	3,104.42	3,104.42	12.04	122.18	175.47	1.44	53.46	485.09	361.17	123.93	3.914	
3,300.00	3,218.33	3,199.33	3,199.33	12.65	125.97	175.75	1.44	53.46	516.51	388.69	127.83	4.041	
3,400.00	3,313.23	3,294.23	3,294.23	13.27	129.77	175.99	1.44	53.46	547.94	416.22	131.73	4.160	
3,500.00	3,408.14	3,389.14	3,389.14	13.89	133.57	176.21	1.44	53.46	579.38	443.75	135.63	4.272	
3,600.00	3,503.05	3,484.05	3,484.05	14.52	137.36	176.40	1.44	53.46	610.83	471.29	139.54	4.378	
3,700.00	3,597.96	3,578.96	3,578.96	15.14	141.16	176.58	1.44	53.46	642.28	498.84	143.44	4.478	
3,800.00	3,692.87	3,673.87	3,673.87	15.76	144.95	176.74	1.44	53.46	673.73	526.38	147.35	4.572	
3,900.00	3,787.77	3,768.77	3,768.77	16.39	148.75	176.89	1.44	53.46	705.19	553.94	151.26	4.662	
4,000.00	3,882.68	3,863.68	3,863.68	17.02	152.55	177.02	1.44	53.46	736.66	581.49	155.17	4.748	
4,100.00	3,977.59	3,958.59	3,958.59	17.65	156.34	177.14	1.44	53.46	768.12	609.05	159.08	4.829	
4,200.00	4,072.50	4,053.50	4,053.50	18.27	160.14	177.25	1.44	53.46	799.59	636.61	162.99	4.906	
4,300.00	4,167.40	4,148.40	4,148.40	18.90	163.94	177.36	1.44	53.46	831.07	664.17	166.90	4.980	
4,400.00	4,262.31	4,243.31	4,243.31	19.53	167.73	177.45	1.44	53.46	862.54	691.73	170.81	5.050	
4,500.00	4,357.22	4,338.22	4,338.22	20.16	171.53	177.54	1.44	53.46	894.02	719.30	174.72	5.117	
4,600.00	4,452.13	4,433.13	4,433.13	20.79	175.33	177.63	1.44	53.46	925.50	746.86	178.63	5.181	
4,700.00	4,547.04	4,528.04	4,528.04	21.42	179.12	177.71	1.44	53.46	956.98	774.43	182.54	5.242	
4,800.00	4,641.94	4,622.94	4,622.94	22.06	182.92	177.78	1.44	53.46	988.46	802.00	186.46	5.301	
4,900.00	4,736.85	4,717.85	4,717.85	22.69	186.71	177.85	1.44	53.46	1,019.94	829.57	190.37	5.358	

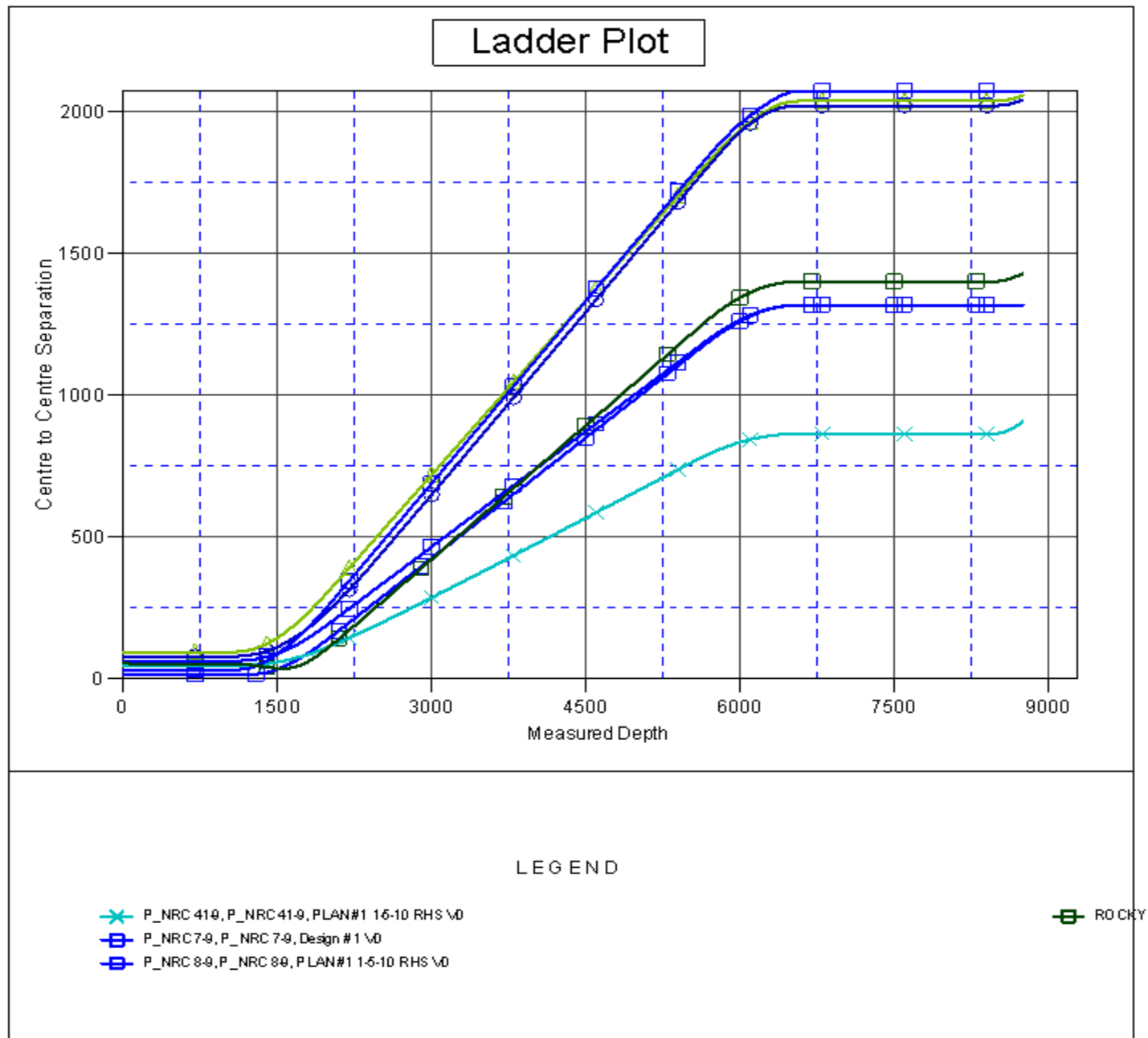
CC - Min centre to center distance or convergent point, SF - min separation factor, ES - min ellipse separation

Company:	US ROCKIES REGION PLANNING	Local Co-ordinate Reference:	Well P_NRC 1-9
Project:	COLORADO NORTHERN ZONE - 83	TVD Reference:	WELL @ 5012.00ft (Original Well Elev)
Reference Site:	WELD_NRC 17-9 PAD	MD Reference:	WELL @ 5012.00ft (Original Well Elev)
Site Error:	0.00ft	North Reference:	True
Reference Well:	P_NRC 1-9	Survey Calculation Method:	Minimum Curvature
Well Error:	0.00ft	Output errors are at	2.00 sigma
Reference Wellbore	P_NRC 1-9	Database:	EDM 2003.21 Single User Db
Reference Design:	PLAN #1 1-5-10 RHS	Offset TVD Reference:	Offset Datum

Offset Design WELD_NRC 17-9 PAD - ROCKY MTN FUEL CO G UNIT #1 EXISTING - ROCKY MTN FUEL CO G UN													Offset Site Error: 0.00 ft
Survey Program: 0-UNKNOWN													Offset Well Error: 0.00 ft
Reference		Offset		Semi Major Axis			Distance						
Measured Depth (ft)	Vertical Depth (ft)	Measured Depth (ft)	Vertical Depth (ft)	Reference (ft)	Offset (ft)	Highside Toolface (°)	Offset Wellbore Centre +N/-S (ft)	+E/-W (ft)	Between Centres (ft)	Between Ellipses (ft)	Minimum Separation (ft)	Separation Factor	Warning
5,000.00	4,831.76	4,812.76	4,812.76	23.32	190.51	177.91	1.44	53.46	1,051.43	857.14	194.29	5.412	
5,100.00	4,926.67	4,907.67	4,907.67	23.95	194.31	177.97	1.44	53.46	1,082.91	884.71	198.20	5.464	
5,200.00	5,021.58	5,002.58	5,002.58	24.58	198.10	178.03	1.44	53.46	1,114.40	912.28	202.11	5.514	
5,300.00	5,116.48	5,097.48	5,097.48	25.22	201.90	178.08	1.44	53.46	1,145.88	939.86	206.03	5.562	
5,400.00	5,211.39	5,192.39	5,192.39	25.85	205.70	178.13	1.44	53.46	1,177.37	967.43	209.94	5.608	
5,500.00	5,306.30	5,287.30	5,287.30	26.49	209.49	178.18	1.44	53.46	1,208.86	995.00	213.86	5.653	
5,600.00	5,401.21	5,382.21	5,382.21	27.12	213.29	178.23	1.44	53.46	1,240.35	1,022.58	217.77	5.696	
5,652.97	5,451.48	5,432.48	5,432.48	27.45	215.30	178.25	1.44	53.46	1,257.03	1,037.19	219.85	5.718	
5,700.00	5,496.24	5,477.24	5,477.24	27.72	217.09	178.28	1.44	53.46	1,271.48	1,048.76	222.72	5.709	
5,800.00	5,592.15	5,573.15	5,573.15	28.17	220.93	178.34	1.44	53.46	1,299.74	1,070.99	228.75	5.682	
5,900.00	5,688.99	5,669.99	5,669.99	28.58	224.80	178.38	1.44	53.46	1,324.63	1,089.96	234.67	5.645	
6,000.00	5,786.65	5,767.65	5,767.65	28.95	228.71	178.42	1.44	53.46	1,346.13	1,105.74	240.39	5.600	
6,100.00	5,884.99	5,865.99	5,865.99	29.27	232.64	178.45	1.44	53.46	1,364.22	1,118.33	245.89	5.548	
6,200.00	5,983.91	5,964.91	5,964.91	29.55	236.60	178.48	1.44	53.46	1,378.86	1,127.72	251.14	5.490	
6,300.00	6,083.28	6,064.28	6,064.28	29.79	240.57	178.49	1.44	53.46	1,390.04	1,133.92	256.13	5.427	
6,400.00	6,182.97	6,163.97	6,163.97	29.97	244.56	178.51	1.44	53.46	1,397.75	1,136.92	260.82	5.359	
6,500.00	6,282.88	6,263.88	6,263.88	30.11	248.56	178.51	1.44	53.46	1,401.97	1,136.76	265.22	5.286	
6,571.13	6,354.00	6,335.00	6,335.00	30.19	251.40	-135.89	1.44	53.46	1,402.86	1,134.71	268.15	5.232	
6,600.00	6,382.87	6,363.87	6,363.87	30.21	252.55	-135.89	1.44	53.46	1,402.86	1,133.51	269.35	5.208	
6,700.00	6,482.87	6,463.87	6,463.87	30.31	256.55	-135.89	1.44	53.46	1,402.86	1,129.34	273.52	5.129	
6,800.00	6,582.87	6,563.87	6,563.87	30.41	260.55	-135.89	1.44	53.46	1,402.86	1,125.16	277.70	5.052	
6,900.00	6,682.87	6,663.87	6,663.87	30.51	264.55	-135.89	1.44	53.46	1,402.86	1,120.98	281.87	4.977	
7,000.00	6,782.87	6,763.87	6,763.87	30.62	268.55	-135.89	1.44	53.46	1,402.86	1,116.81	286.05	4.904	
7,100.00	6,882.87	6,863.87	6,863.87	30.72	272.55	-135.89	1.44	53.46	1,402.86	1,112.63	290.23	4.834	
7,200.00	6,982.87	6,963.87	6,963.87	30.83	276.55	-135.89	1.44	53.46	1,402.86	1,108.45	294.41	4.765	
7,300.00	7,082.87	7,063.87	7,063.87	30.93	280.55	-135.89	1.44	53.46	1,402.86	1,104.27	298.59	4.698	
7,400.00	7,182.87	7,163.87	7,163.87	31.04	284.55	-135.89	1.44	53.46	1,402.86	1,100.09	302.77	4.633	
7,500.00	7,282.87	7,263.87	7,263.87	31.15	288.55	-135.89	1.44	53.46	1,402.86	1,095.90	306.95	4.570	
7,600.00	7,382.87	7,363.87	7,363.87	31.26	292.55	-135.89	1.44	53.46	1,402.86	1,091.72	311.14	4.509	
7,700.00	7,482.87	7,463.87	7,463.87	31.38	296.55	-135.89	1.44	53.46	1,402.86	1,087.54	315.32	4.449	
7,800.00	7,582.87	7,563.87	7,563.87	31.49	300.55	-135.89	1.44	53.46	1,402.86	1,083.35	319.51	4.391	
7,900.00	7,682.87	7,663.87	7,663.87	31.60	304.55	-135.89	1.44	53.46	1,402.86	1,079.16	323.69	4.334	
8,000.00	7,782.87	7,763.87	7,763.87	31.72	308.55	-135.89	1.44	53.46	1,402.86	1,074.98	327.88	4.279	
8,100.00	7,882.87	7,863.87	7,863.87	31.84	312.55	-135.89	1.44	53.46	1,402.86	1,070.79	332.07	4.225	
8,200.00	7,982.87	7,963.87	7,963.87	31.95	316.55	-135.89	1.44	53.46	1,402.86	1,066.60	336.25	4.172	
8,300.00	8,082.87	8,063.87	8,063.87	32.07	320.55	-135.89	1.44	53.46	1,402.86	1,062.41	340.44	4.121	
8,400.00	8,182.87	8,163.87	8,163.87	32.19	324.55	-135.89	1.44	53.46	1,402.86	1,058.22	344.63	4.071	
8,450.34	8,233.21	8,214.21	8,214.21	32.25	326.57	-135.89	1.44	53.46	1,402.86	1,056.11	346.74	4.046	
8,500.00	8,282.87	8,231.00	8,231.00	32.31	327.24	-135.89	1.44	53.46	1,403.24	1,055.73	347.51	4.038	
8,600.00	8,382.87	8,231.00	8,231.00	32.44	327.24	-135.89	1.44	53.46	1,409.13	1,061.43	347.70	4.053	
8,700.00	8,482.87	8,231.00	8,231.00	32.56	327.24	-135.89	1.44	53.46	1,422.05	1,074.16	347.89	4.088	
8,751.13	8,534.00	8,231.00	8,231.00	32.62	327.24	-135.89	1.44	53.46	1,431.31	1,083.32	347.99	4.113	

Company:	US ROCKIES REGION PLANNING	Local Co-ordinate Reference:	Well P_NRC 1-9
Project:	COLORADO NORTHERN ZONE - 83	TVD Reference:	WELL @ 5012.00ft (Original Well Elev)
Reference Site:	WELD_NRC 17-9 PAD	MD Reference:	WELL @ 5012.00ft (Original Well Elev)
Site Error:	0.00ft	North Reference:	True
Reference Well:	P_NRC 1-9	Survey Calculation Method:	Minimum Curvature
Well Error:	0.00ft	Output errors are at	2.00 sigma
Reference Wellbore	P_NRC 1-9	Database:	EDM 2003.21 Single User Db
Reference Design:	PLAN #1 1-5-10 RHS	Offset TVD Reference:	Offset Datum

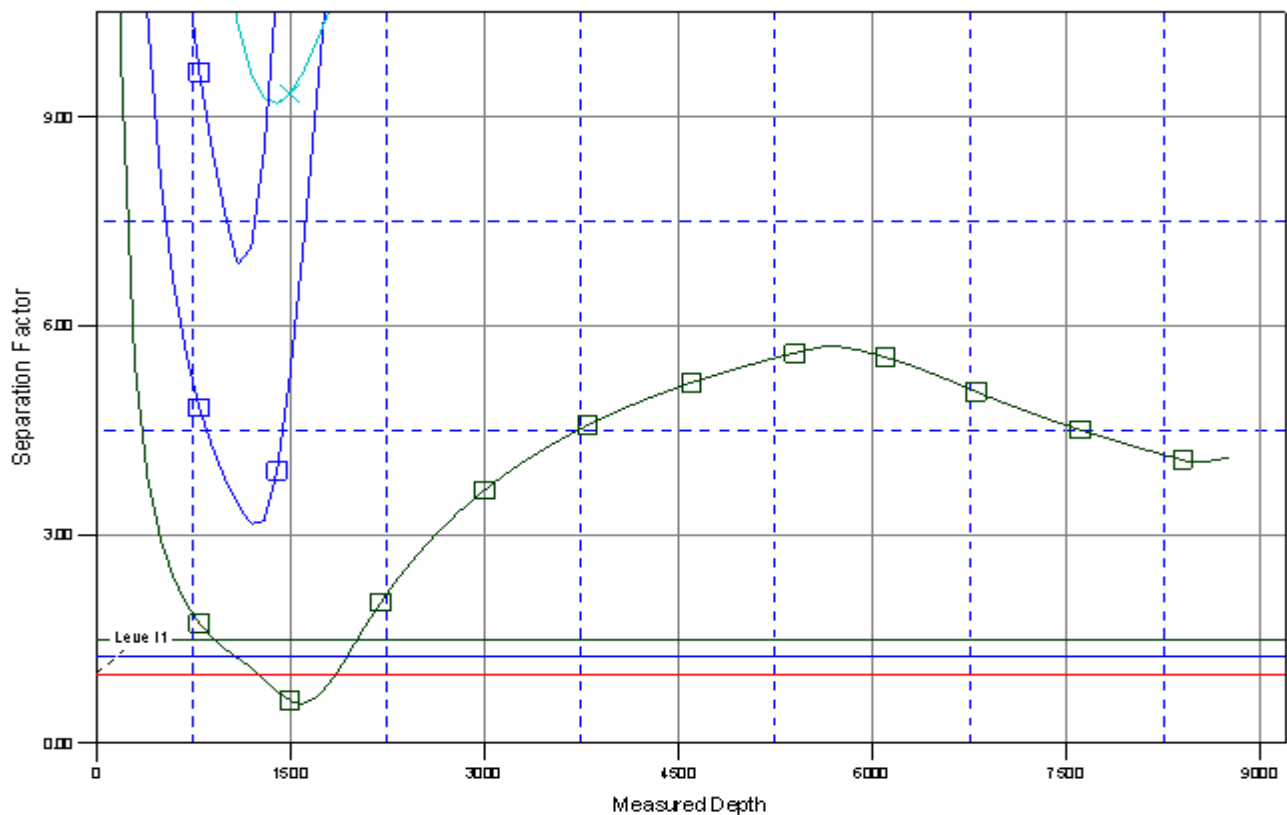
Reference Depths are relative to WELL @ 5012.00ft (Original Well Elev) Coordinates are relative to: P_NRC 1-9
Offset Depths are relative to Offset Datum Coordinate System is US State Plane 1983, Colorado Northern Zone
Central Meridian is 105° 30' 0.000 W ° Grid Convergence at Surface is: 0.39°



Company:	US ROCKIES REGION PLANNING	Local Co-ordinate Reference:	Well P_NRC 1-9
Project:	COLORADO NORTHERN ZONE - 83	TVD Reference:	WELL @ 5012.00ft (Original Well Elev)
Reference Site:	WELD_NRC 17-9 PAD	MD Reference:	WELL @ 5012.00ft (Original Well Elev)
Site Error:	0.00ft	North Reference:	True
Reference Well:	P_NRC 1-9	Survey Calculation Method:	Minimum Curvature
Well Error:	0.00ft	Output errors are at	2.00 sigma
Reference Wellbore	P_NRC 1-9	Database:	EDM 2003.21 Single User Db
Reference Design:	PLAN #1 1-5-10 RHS	Offset TVD Reference:	Offset Datum

Reference Depths are relative to WELL @ 5012.00ft (Original Well Elev) Coordinates are relative to: P_NRC 1-9
Offset Depths are relative to Offset Datum Coordinate System is US State Plane 1983, Colorado Northern Zone
Central Meridian is 105° 30' 0.000 W ° Grid Convergence at Surface is: 0.39°

Separation Factor Plot



LEGEND

- ✕ P_NRC 41-9, P_NRC 41-9, PLAN #1 1-5-10 RHS \0
- ✕ P_NRC 7-9, P_NRC 7-9, Design #1 \0
- ✕ P_NRC 8-9, P_NRC 8-9, PLAN #1 1-5-10 RHS \0

✕ ROCKY