

Patterson

**DUAL
INDUCTION
LOG**

Company XTO Energy Inc.		Company XTO Energy Inc.	
Well Apache Canyon 07-05		Well Apache Canyon 07-05	
Field Purgatoire River		Field Purgatoire River	
County Las Animas		County Las Animas	
State Colorado		State Colorado	
Location: API # : 05 071 08652 00		Other Services CDL NEUTRON	
SEC 07 TWP 34S RGE 67W		Elevation	
Permanent Datum	Ground Level	Elevation	7862'
Log Measured From	Ground Level		
Drilling Measured From	Ground Level		
Date 2-15-06			
Run Number	One		
Depth Driller	2340'		
Depth Logger	2331'		
Bottom Logged Interval	2329'		
Top Log Interval	Surface Casing		
Casing Driller	8 5/8" @ 226'		
Casing Logger	229'		
Bit Size	7 7/8"		
Type Fluid in Hole	Water		
Density / Viscosity	///		
pH / Fluid Loss	///		
Source of Sample	///		
Rm @ Meas. Temp	///		
Rmf @ Meas. Temp	///		
Rmc @ Meas. Temp	///		
Source of Rmf / Rmc	///		
Rm @ BHT	///		
Time Circulation Stopped	9:30 P.M./2-14-06		
Time Logger on Bottom	12:00 A.M.		
Maximum Recorded Temperature	108 DEG F		
Equipment Number	T720		
Location	Trinidad		
Recorded By	M. Norton		
Witnessed By	Mr. Don Johnson		

<<< Fold Here >>>

All interpretations are opinions based on inferences from electrical or other measurements and we cannot and do not guarantee the accuracy or correctness of any interpretation, and we shall not, except in the case of gross or willful negligence on our part, be liable or responsible for any loss, costs, damages, or expenses incurred or sustained by anyone resulting from any interpretation made by any of our officers, agents or employees. These interpretations are also subject to our general terms and conditions set out in our current Price Schedule.

Comments

Well Directions:
Left Just Before Weston Towards Bosque Del Oso, Right On Torres Canyon,
Two and Half Miles To Y, At Y Stay Right, One Mile Turn Left To Location.

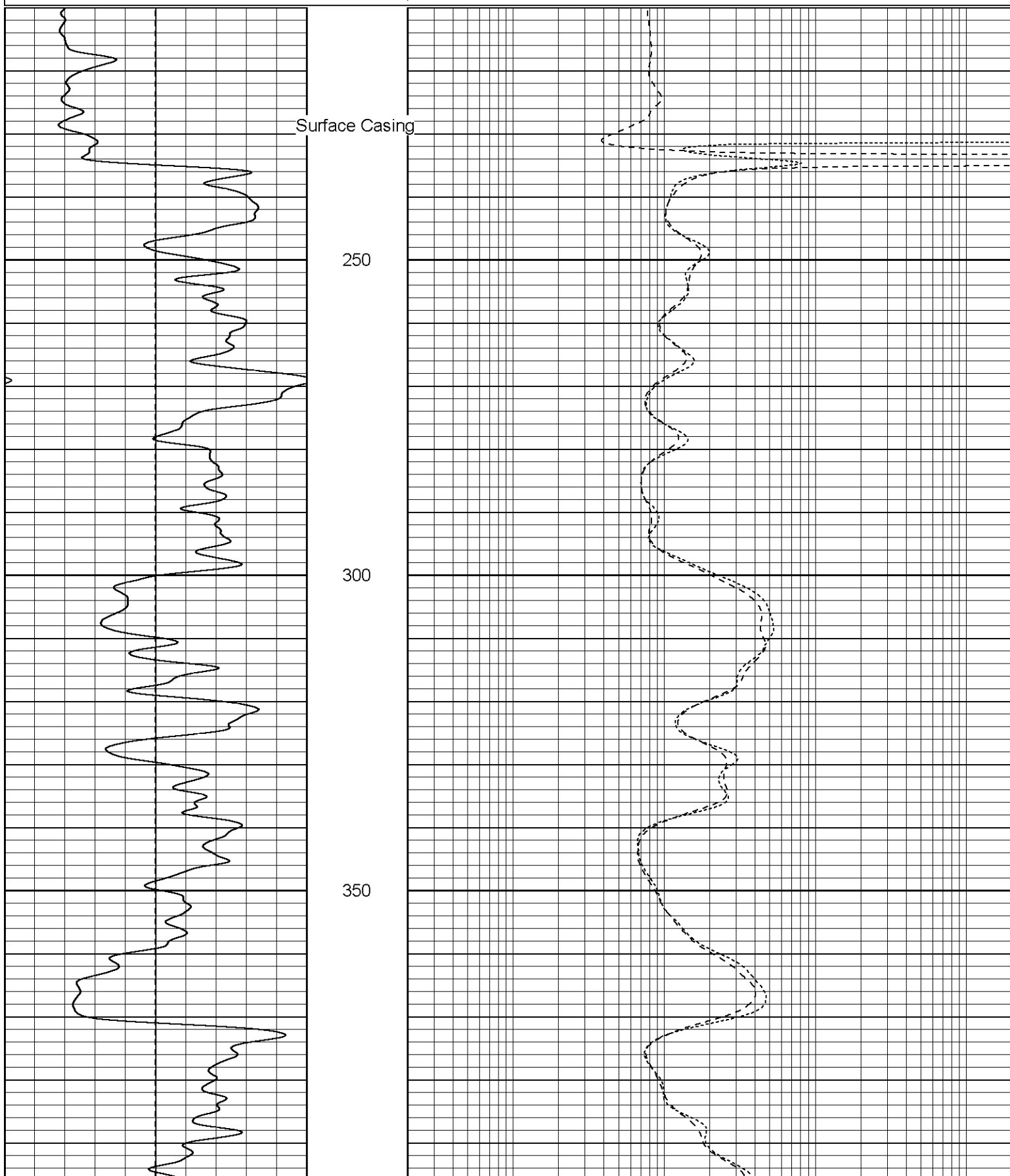
Patterson

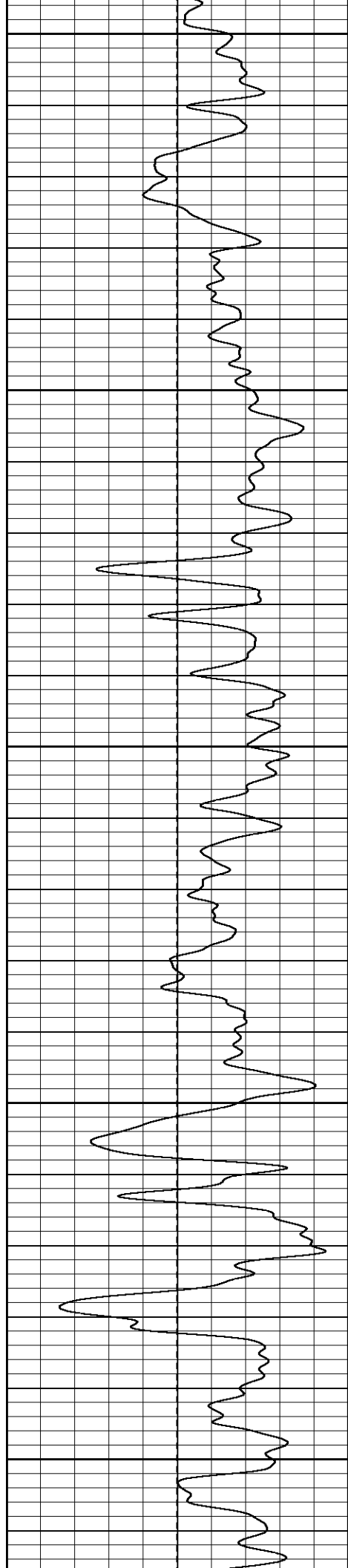
Main Pass

Database File: xtoac0705.db
Dataset Pathname: pass2.2
Presentation Format: dil
Dataset Creation: Wed Feb 15 02:57:54 2006 by Calc Warrior 7.0 STD Ope
Charted by: Depth in Feet scaled 1:240

0	GR (GAPI)	200
-100	SP (mV)	100

0.2	RILM (Ohm-m)	2000
0.2	RILD (Ohm-m)	2000
0.2	RLL3 (Ohm-m)	2000





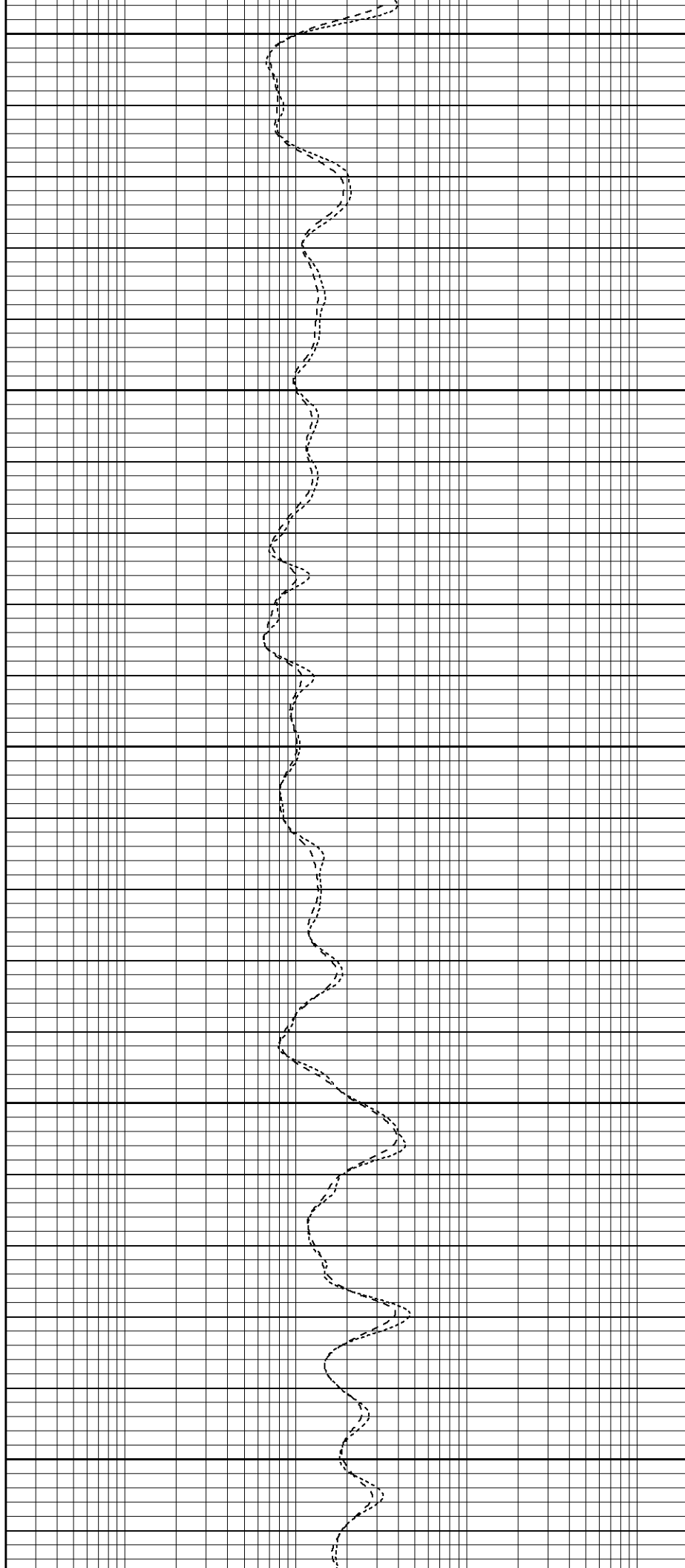
400

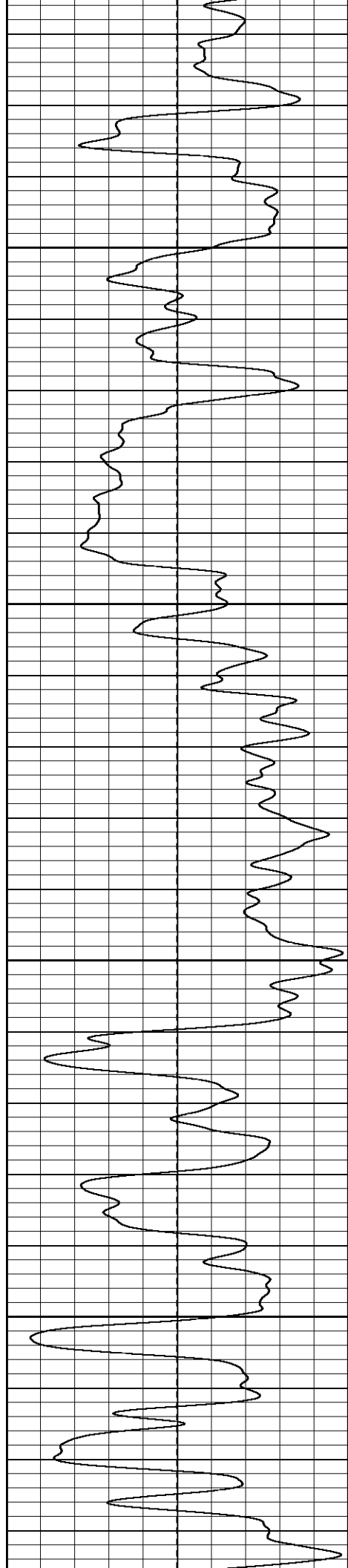
450

500

550

600



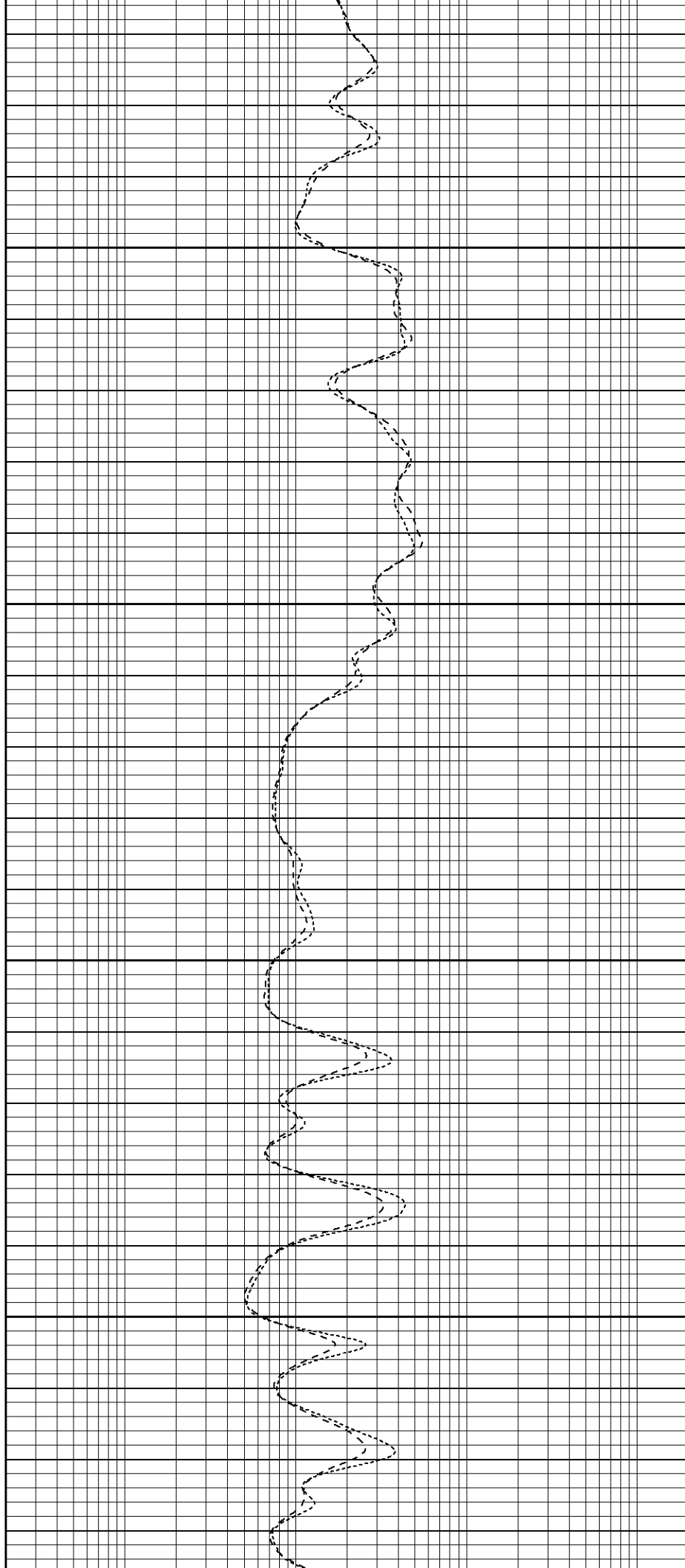


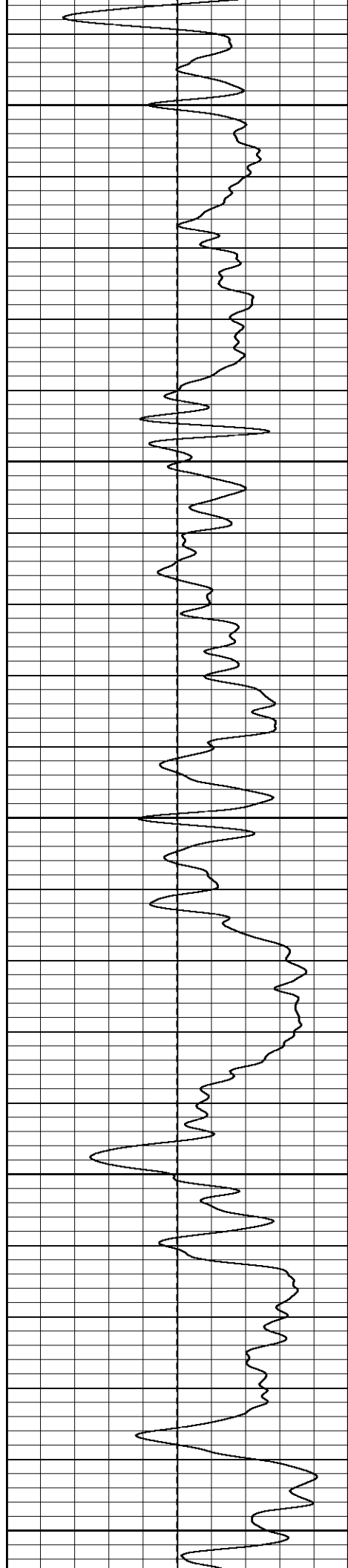
650

700

750

800





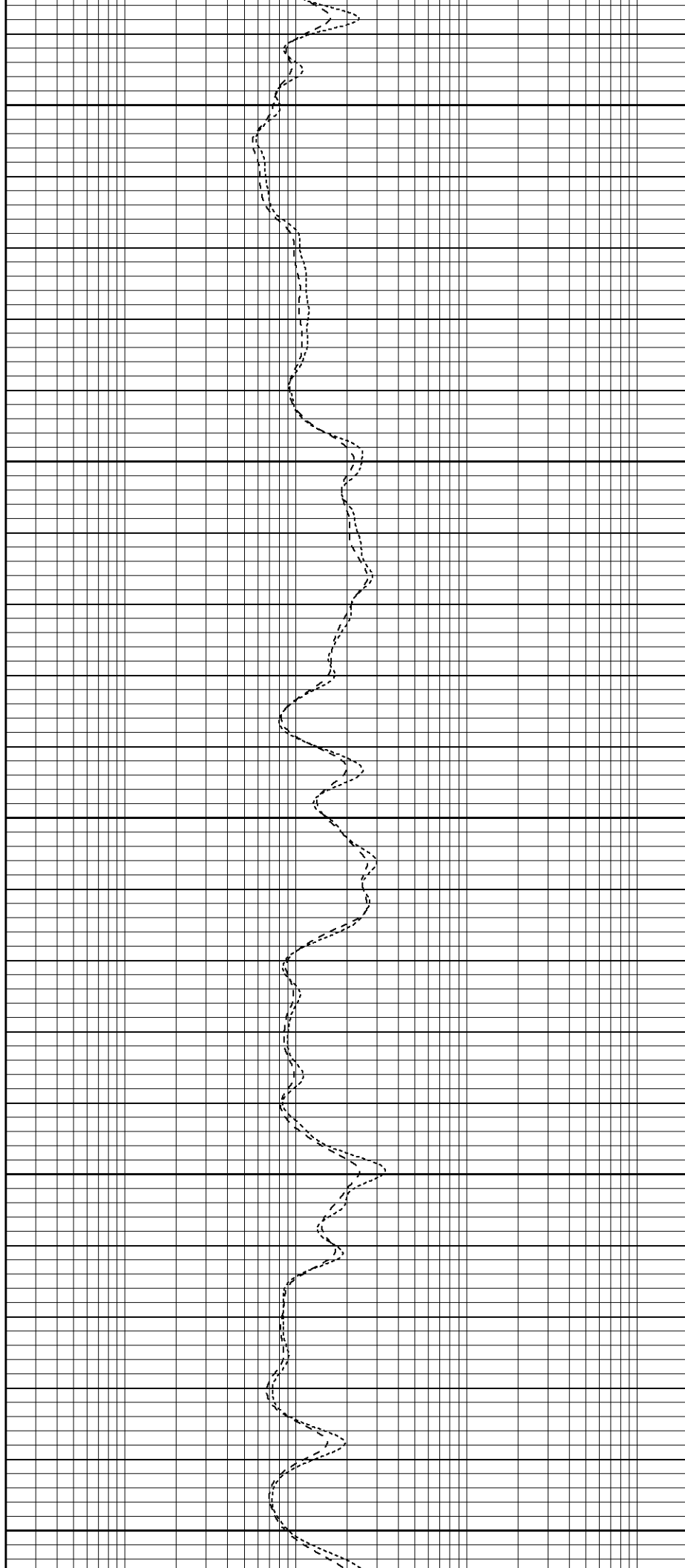
850

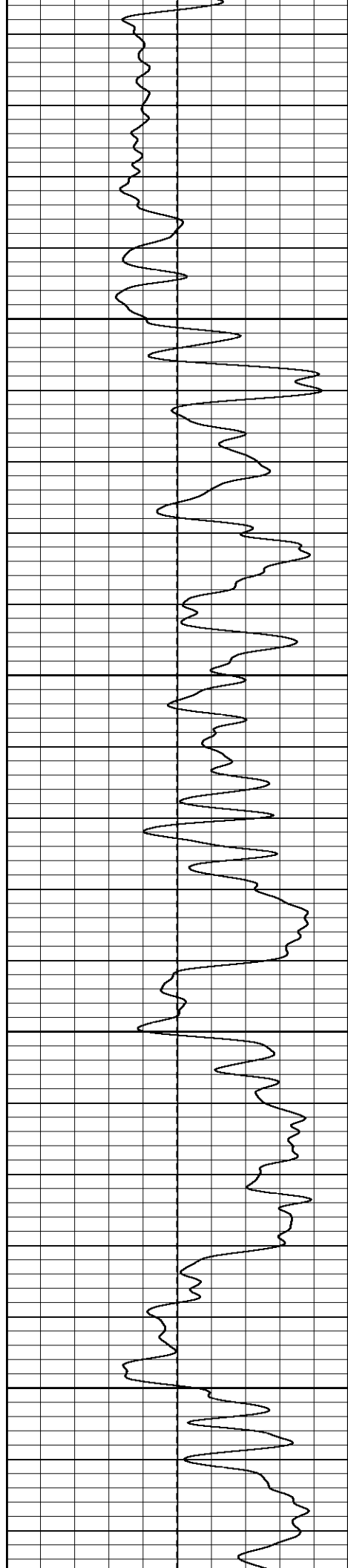
900

950

1000

1050



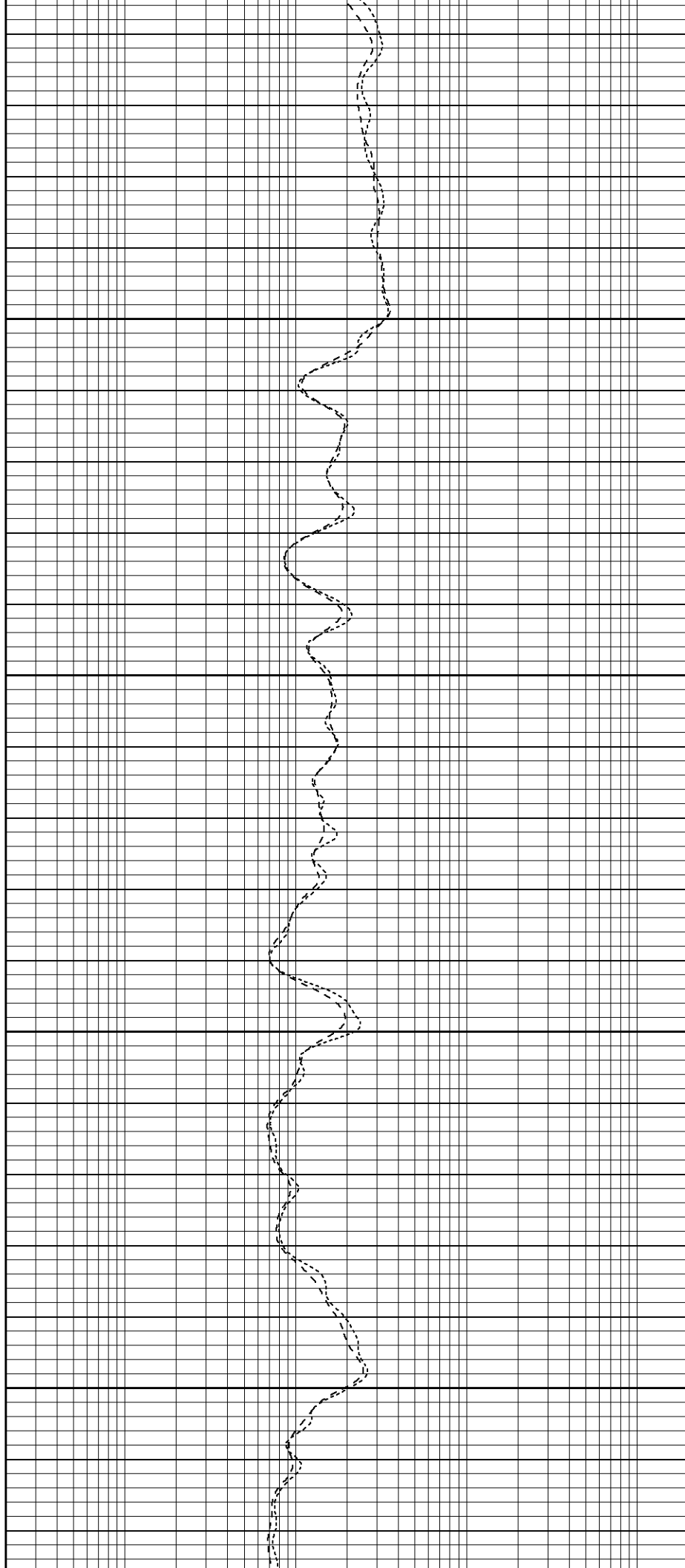


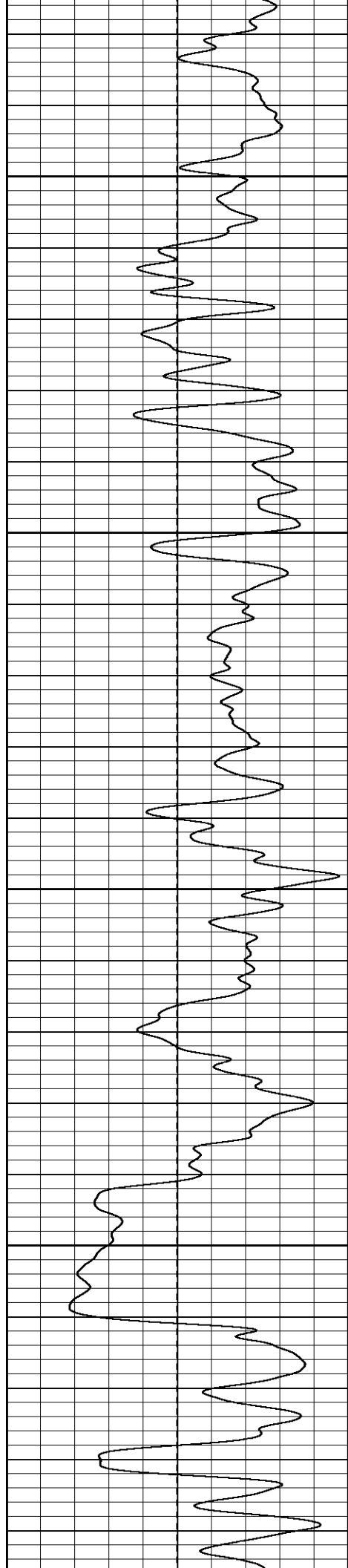
1100

1150

1200

1250



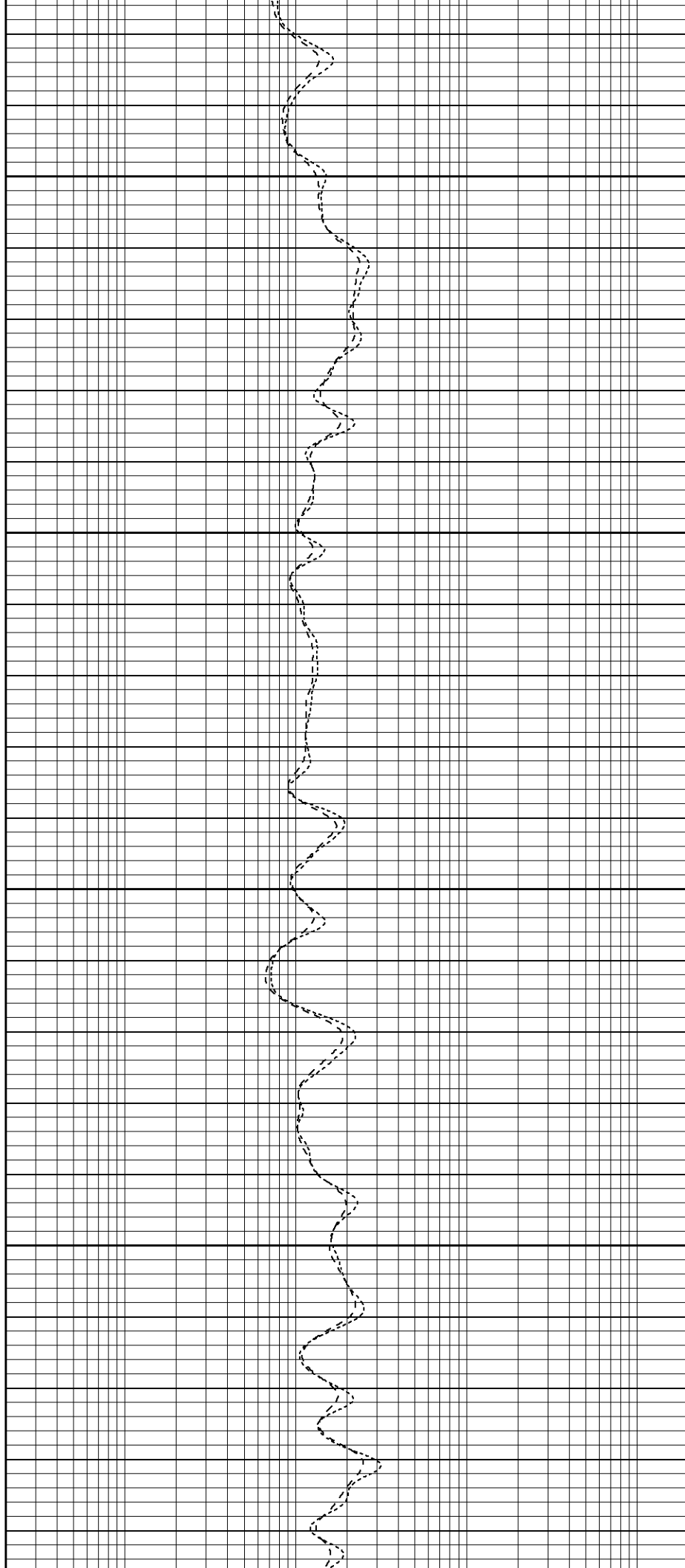


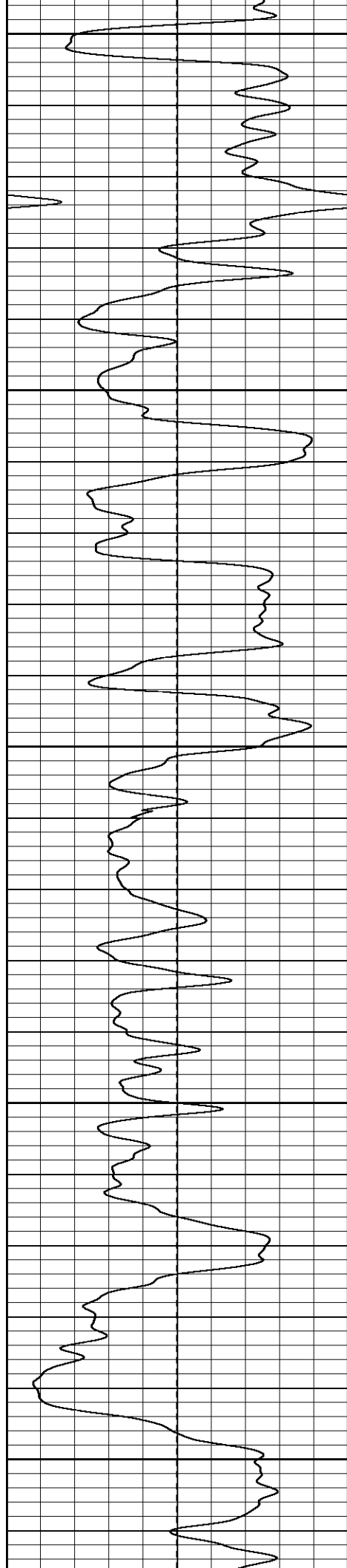
1300

1350

1400

1450





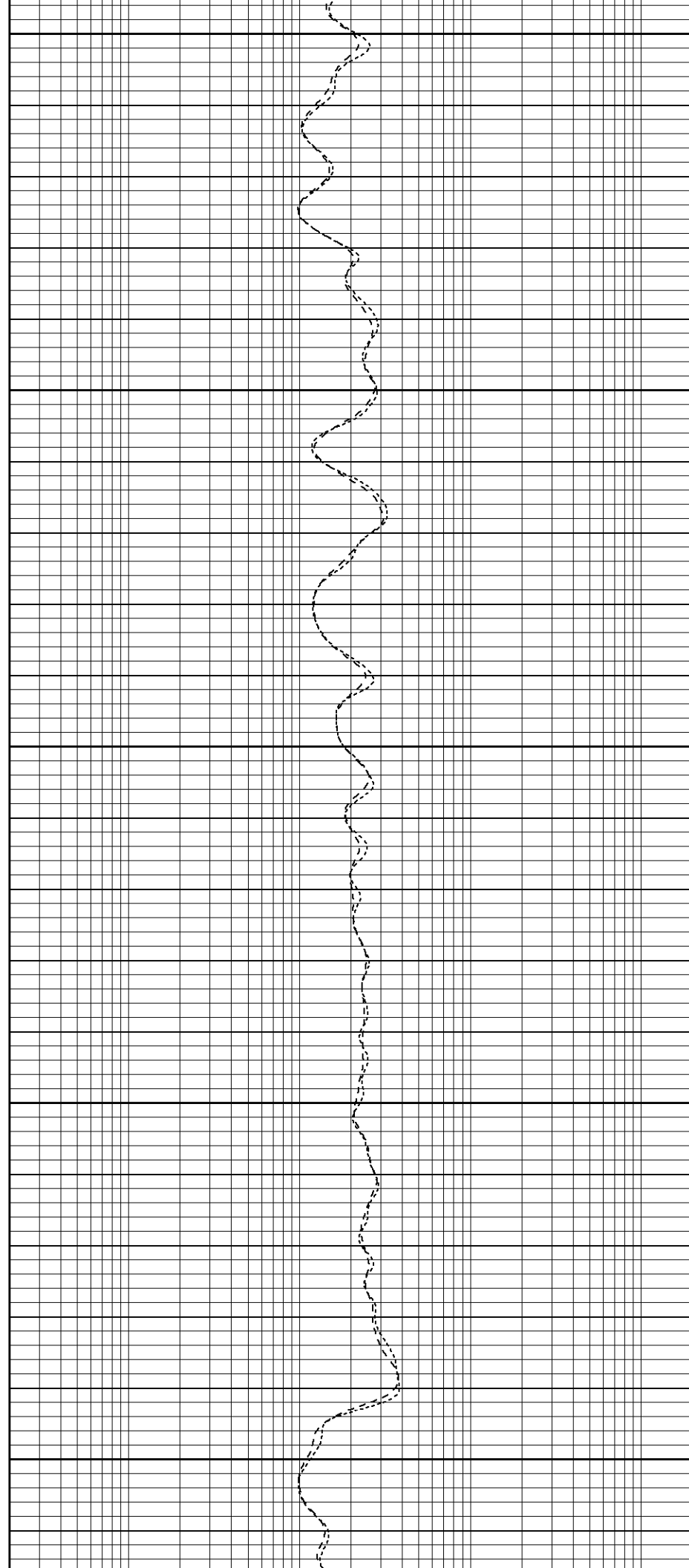
1500

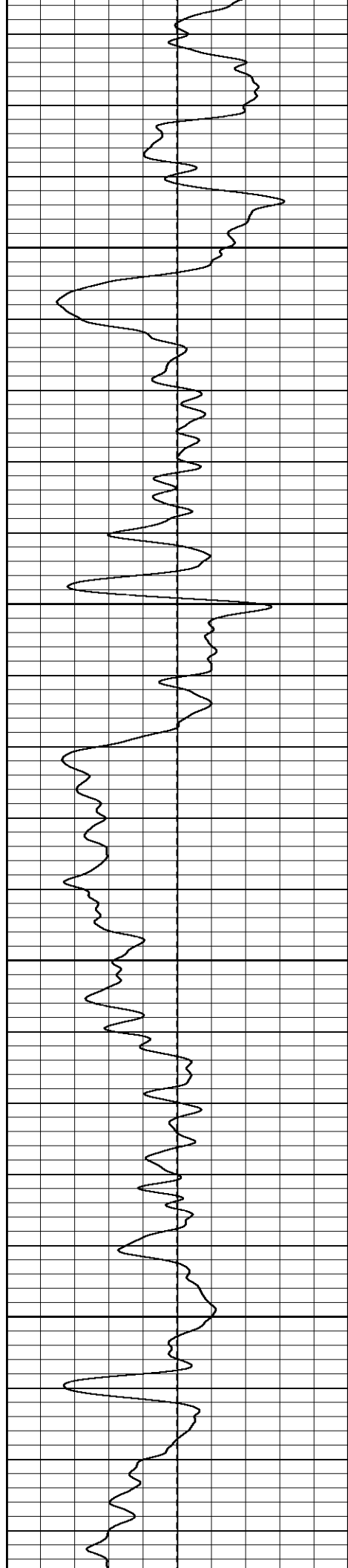
1550

1600

1650

1700



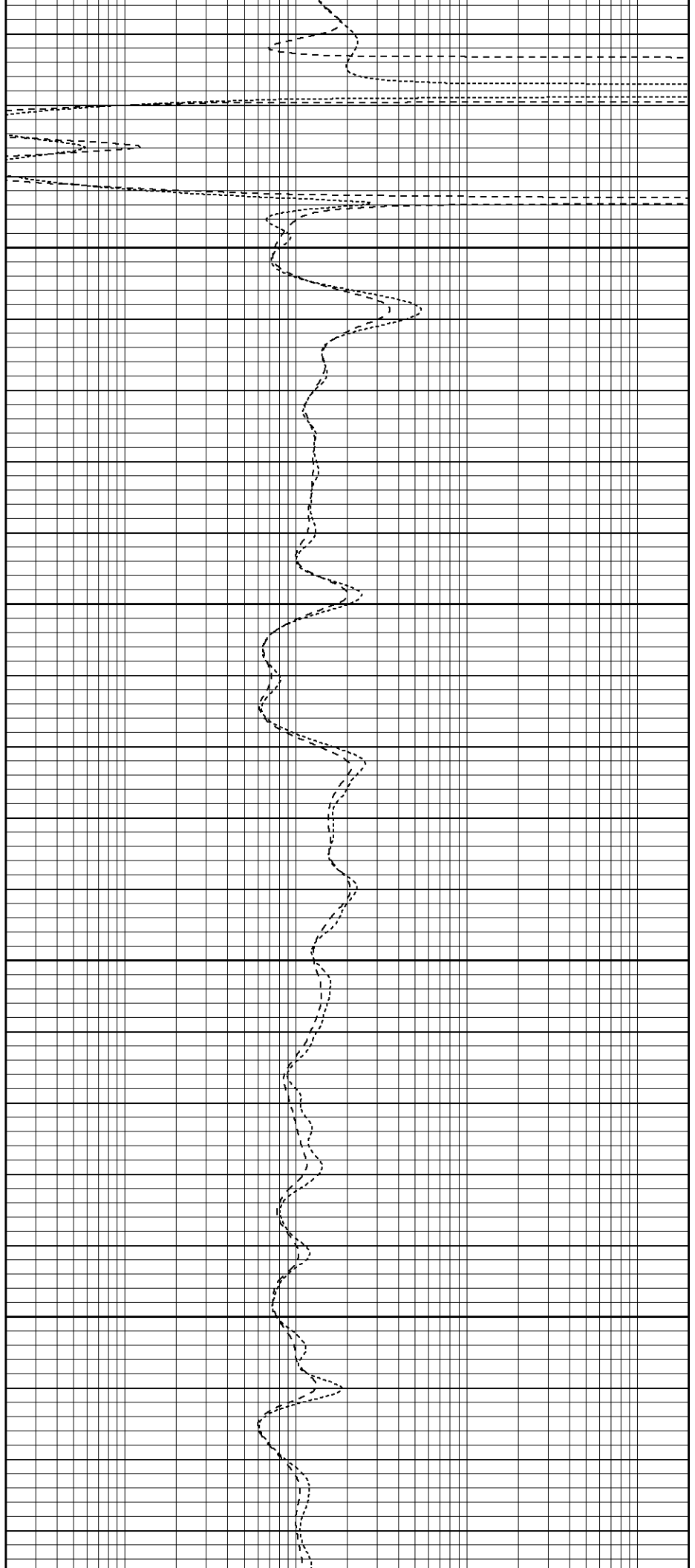


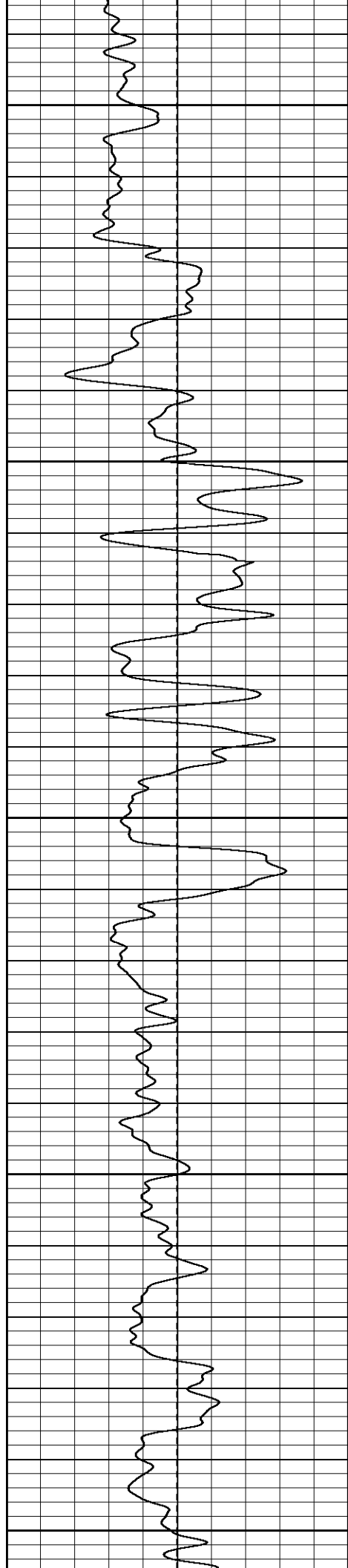
1750

1800

1850

1900





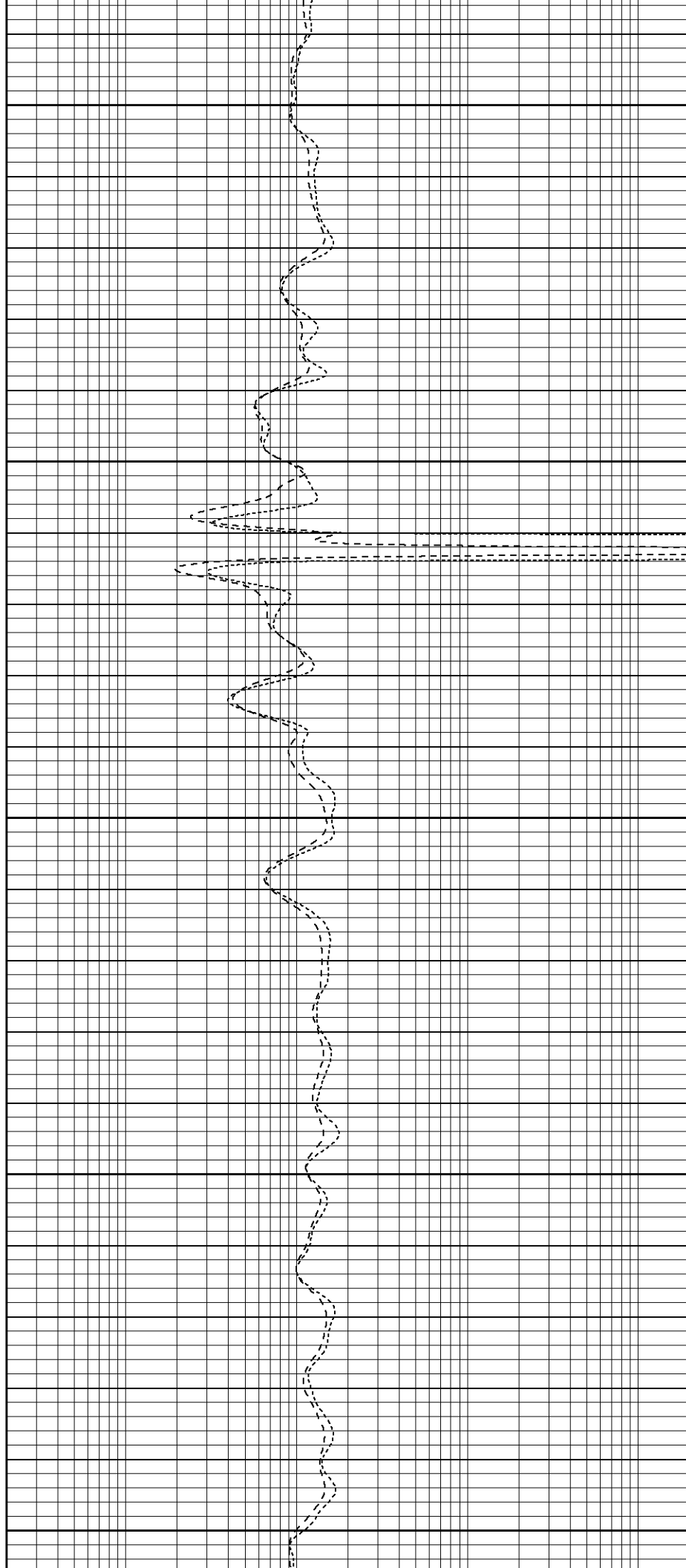
1950

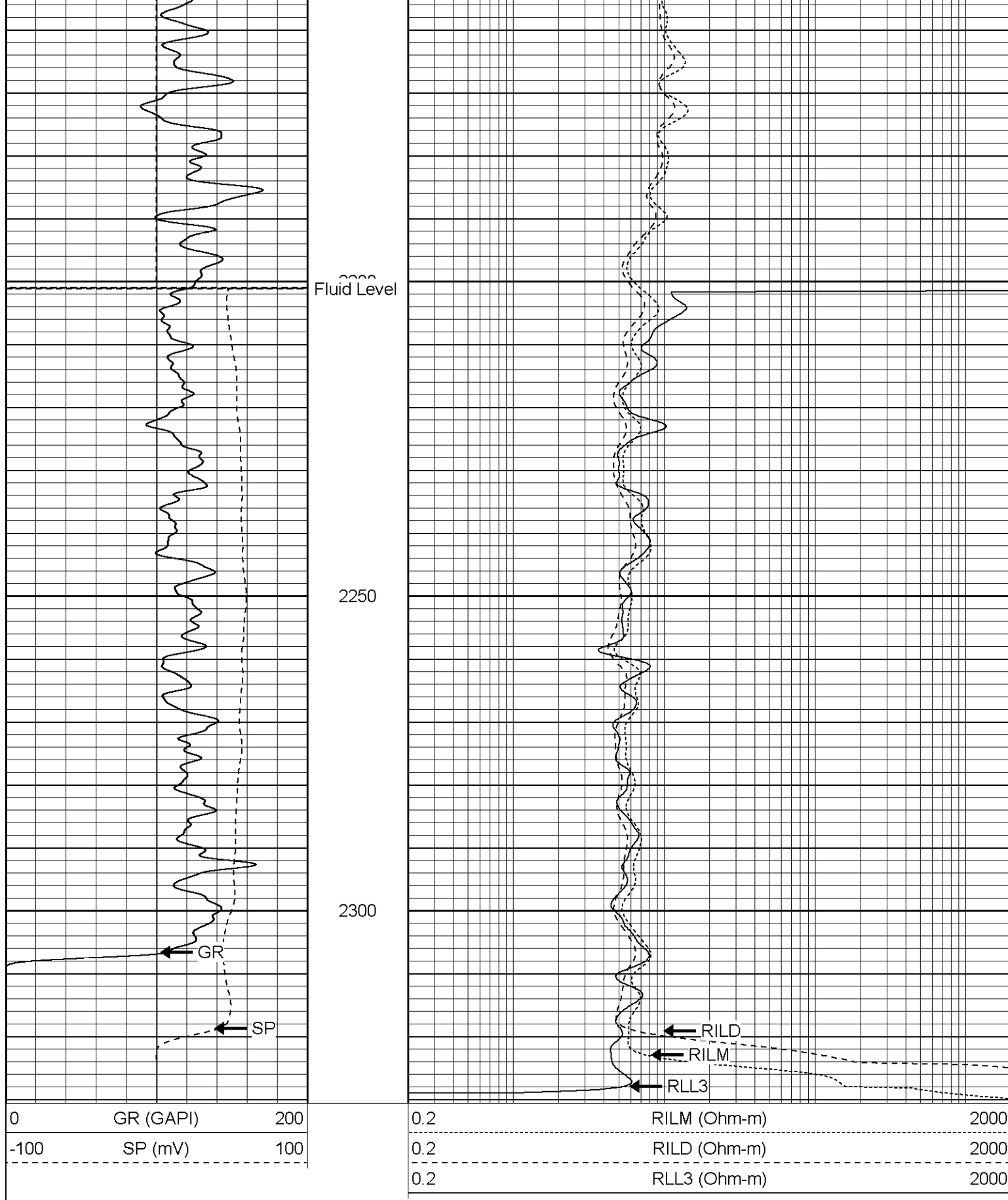
2000

2050

2100

2150





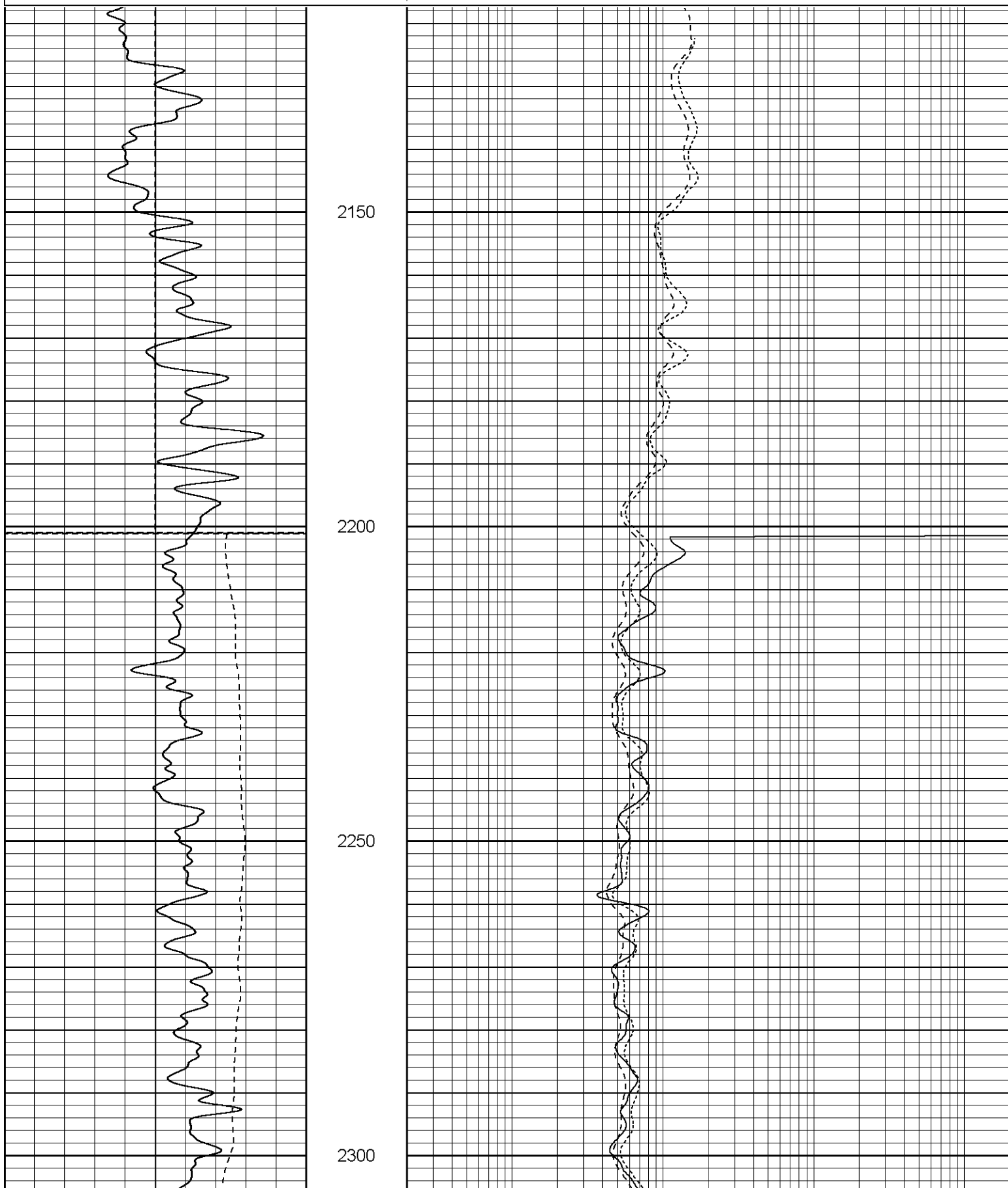
Patterson

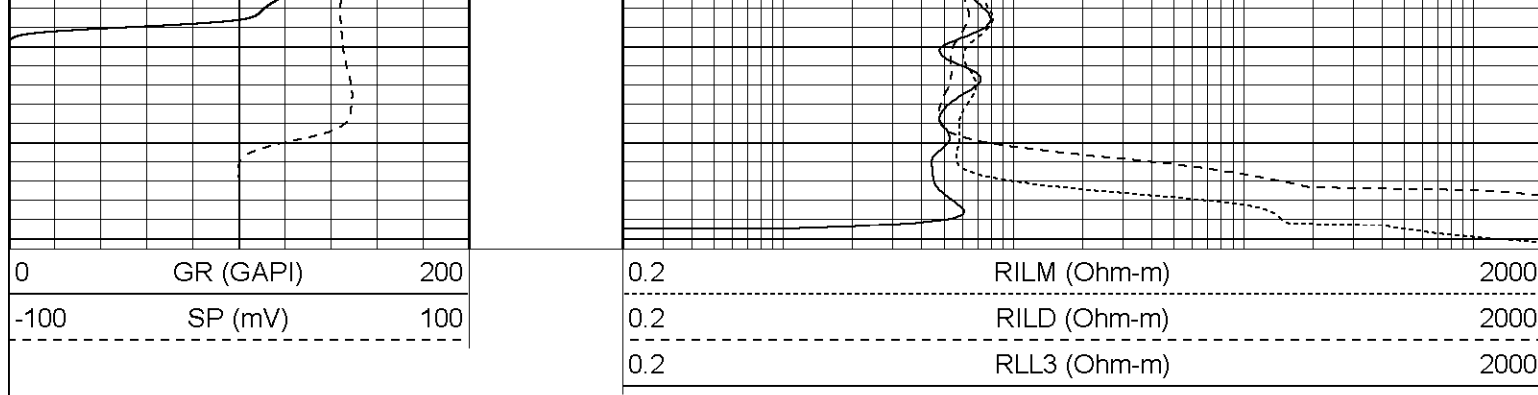
Repeat Section

Database File: xtd00700.db
Dataset Pathname: pass1.3
Presentation Format: dil
Dataset Creation: Wed Feb 15 13:55:30 2006 by Calc Warrior 7.0 STD Ope
Charted by: Depth in Feet scaled 1:240

0	GR (GAPI)	200
-100	SP (mV)	100

0.2	RILM (Ohm-m)	2000
0.2	RILD (Ohm-m)	2000
0.2	RLL3 (Ohm-m)	2000





Dual Induction Calibration Report

Serial-Model: 5375-G
 Surface Cal Performed: Mon Feb 13 13:52:53 2006
 Downhole Cal Performed: Tue Feb 14 23:23:54 2006

Surface Calibration

Readings				References			Results	
Loop:	Air	Loop		Air	Loop		m	b
Deep	0.000	0.633	V	0.000	500.000	mmho-m	789.538	0.000
Medium	0.016	0.752	V	0.000	550.000	mmho-m	747.433	-11.697
Internal:	Zero	Cal		Zero	Cal		m	b
Deep	0.012	0.636	V	0.000	500.000	mmho-m	800.610	-9.578
Medium	0.016	0.752	V	0.000	550.000	mmho-m	747.389	-12.066

Downhole Calibration

Readings				References			Results	
Internal:	Zero	Cal		Zero	Cal		m	b
Deep	1.512	503.799	mmho-m	0.280	502.577	mmho-m	1.000	-1.232
Medium	0.922	551.464	mmho-m	0.370	550.401	mmho-m	0.999	-0.551
Shallow	2.522	0.024	V	500.000	2.000	Ohm-m	199.331	-3.000

Gamma Ray Calibration Report

Serial Number: 2001
 Tool Model: OH
 Performed: Tue Feb 14 10:15:47 2006

Calibration Values: 1.0 GAPI

CILD SP	10.60 10.60		20.83	4.00	345.00
CILM	6.89				
RLL3	1.70				
Dataset: /field/well/run1/_plots/_jobs_/dil Total Length: 25.08 ft Total Weight: 390.00 lb O.D. 4.00 in					