

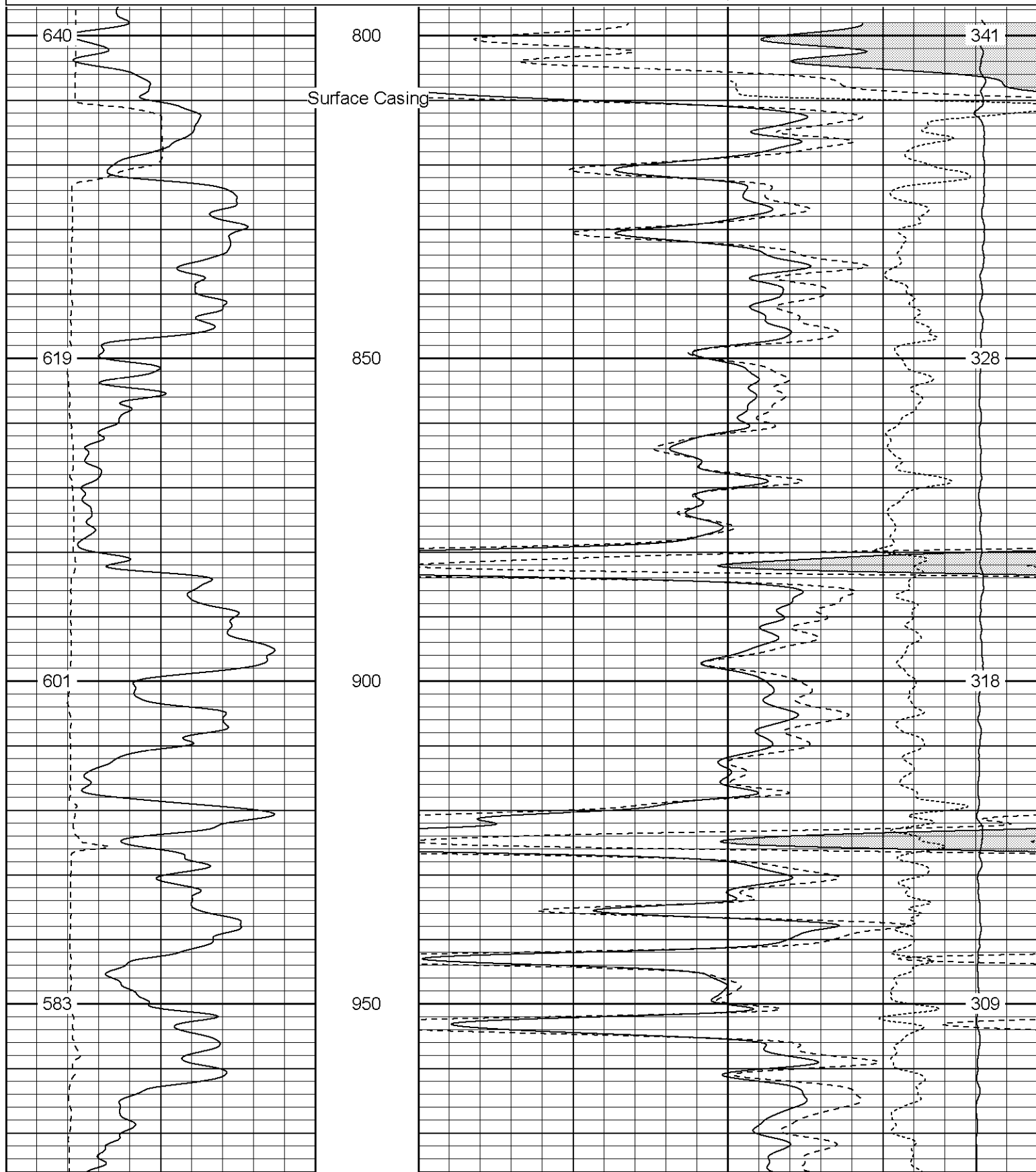


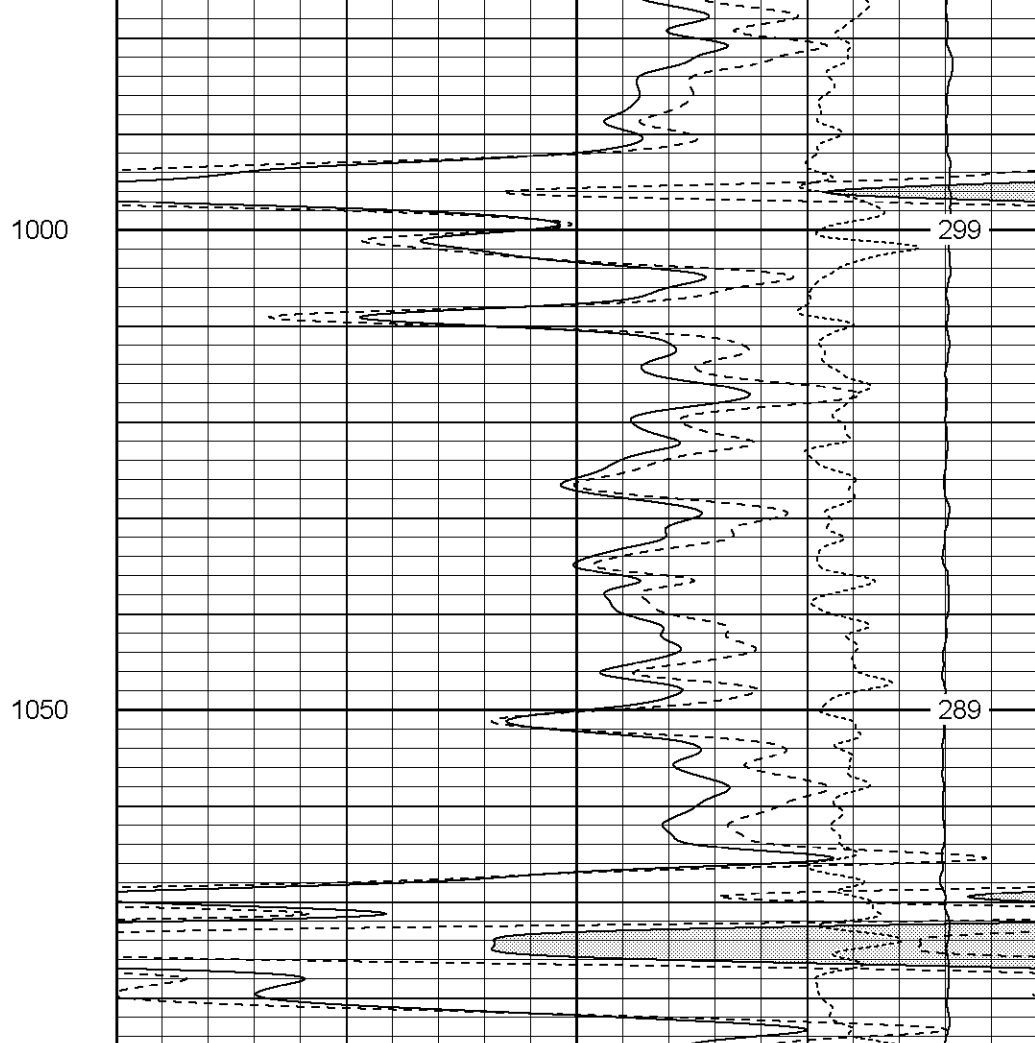
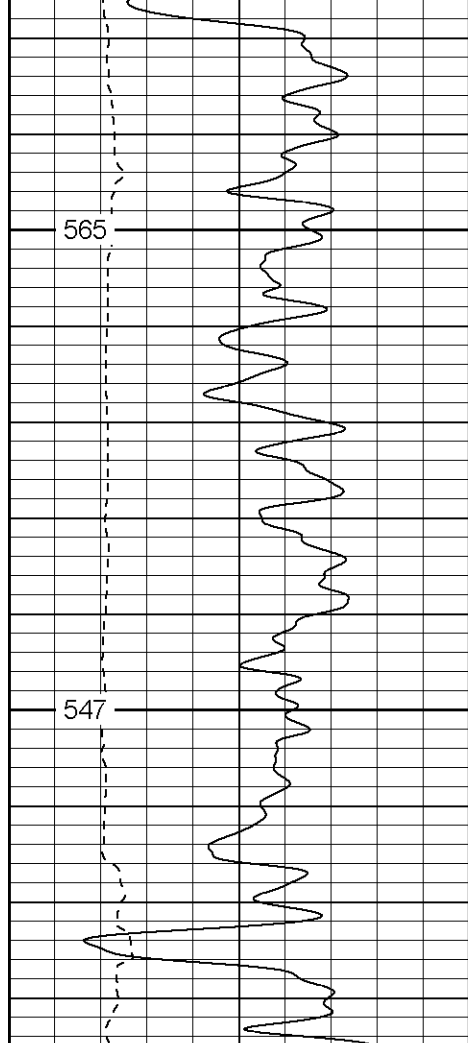
Company XTO Energy, Inc.  
Well Apache Canyon 24-10

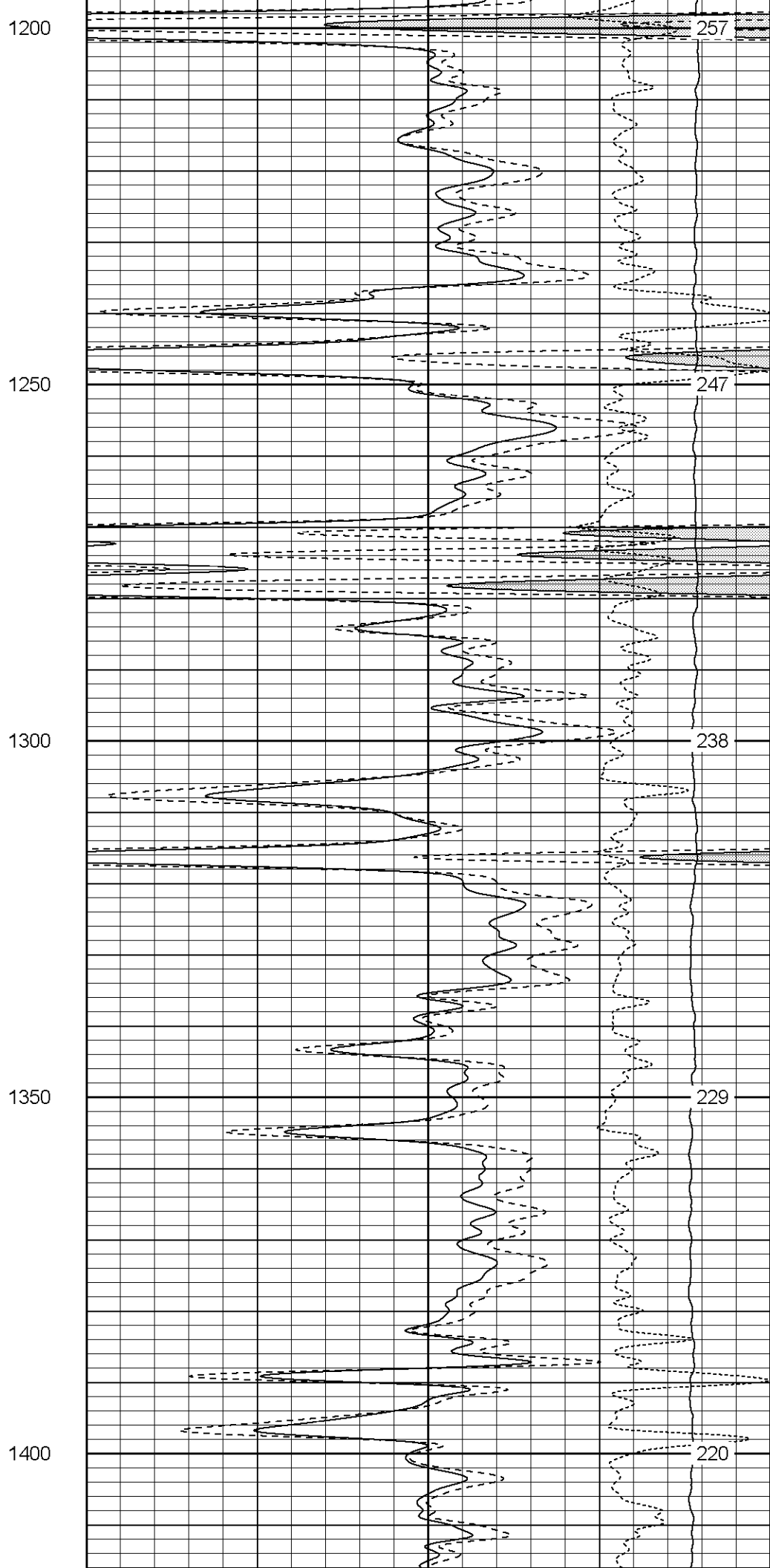
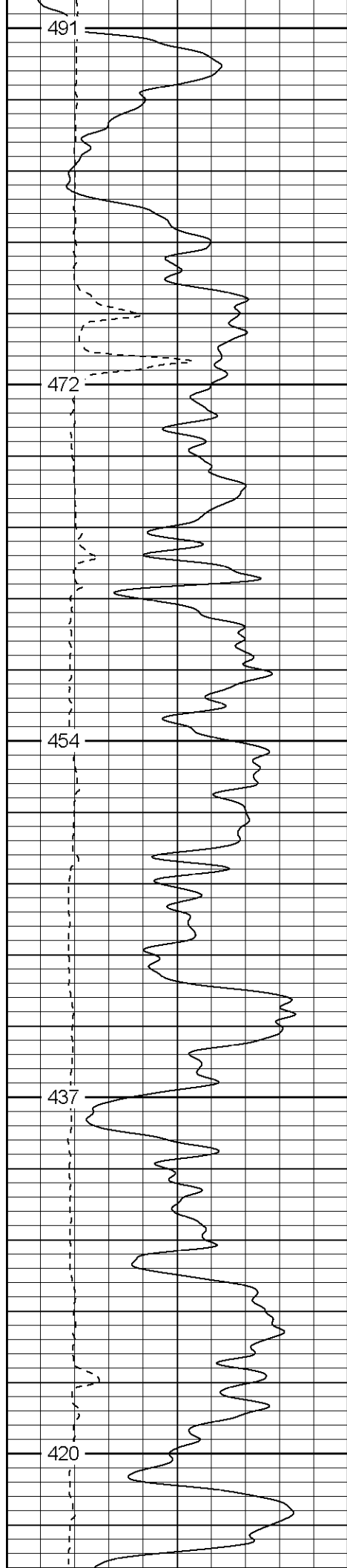
Date
Run Nt
Depth
Depth
Bottom
Top Lc
Casing
Casing
Bit Size
Type F
Density
ph / Fil
Source
Rm @
Rmf @
Rmc @
Source
Rm @
Time C
Time L
Maximi
Equipn
Locatic
Recort
Witness

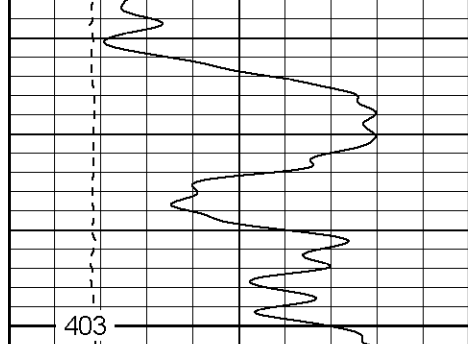
Database File: xtoac31-16.db  
Dataset Pathname: pass5  
Presentation Format: cdl  
Dataset Creation: Sun Jul 16 00:26:54 2006 by Log Warrior 7.0 STD Ope  
Charted by: Depth in Feet scaled 1:240

0	GR (GAPI)	200	1	RHOB (g/cc)		2
6	DCAL (in)	16	30	DPOR (pu)		-10
				-0.5	RHOC (g/cc)	0.5
				4000	LTEN (lb)	0

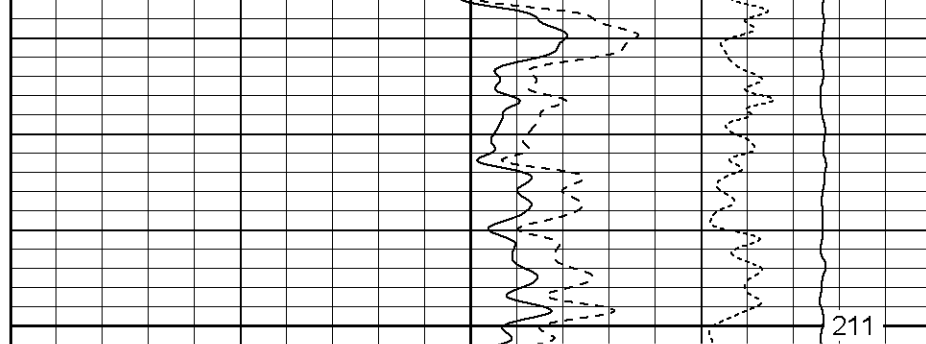


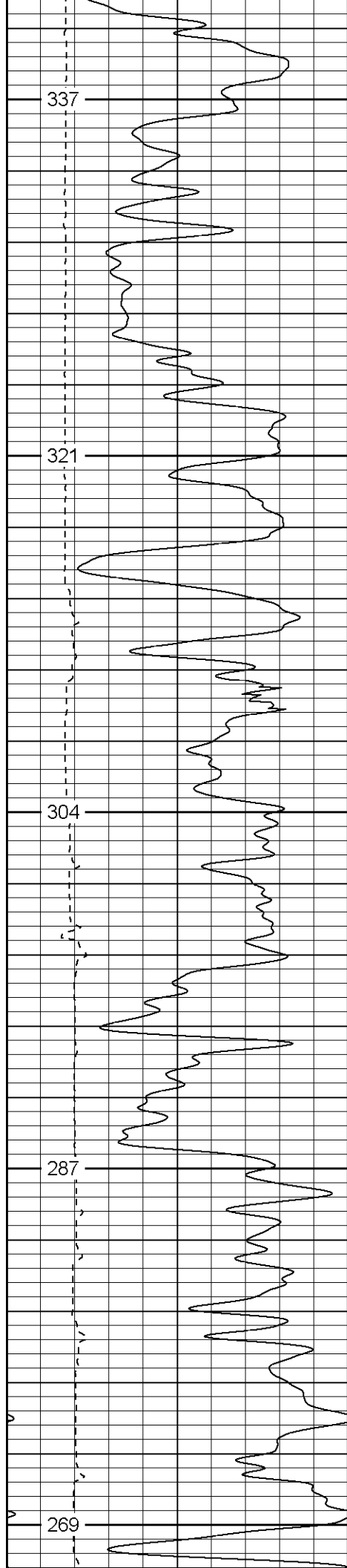






1450





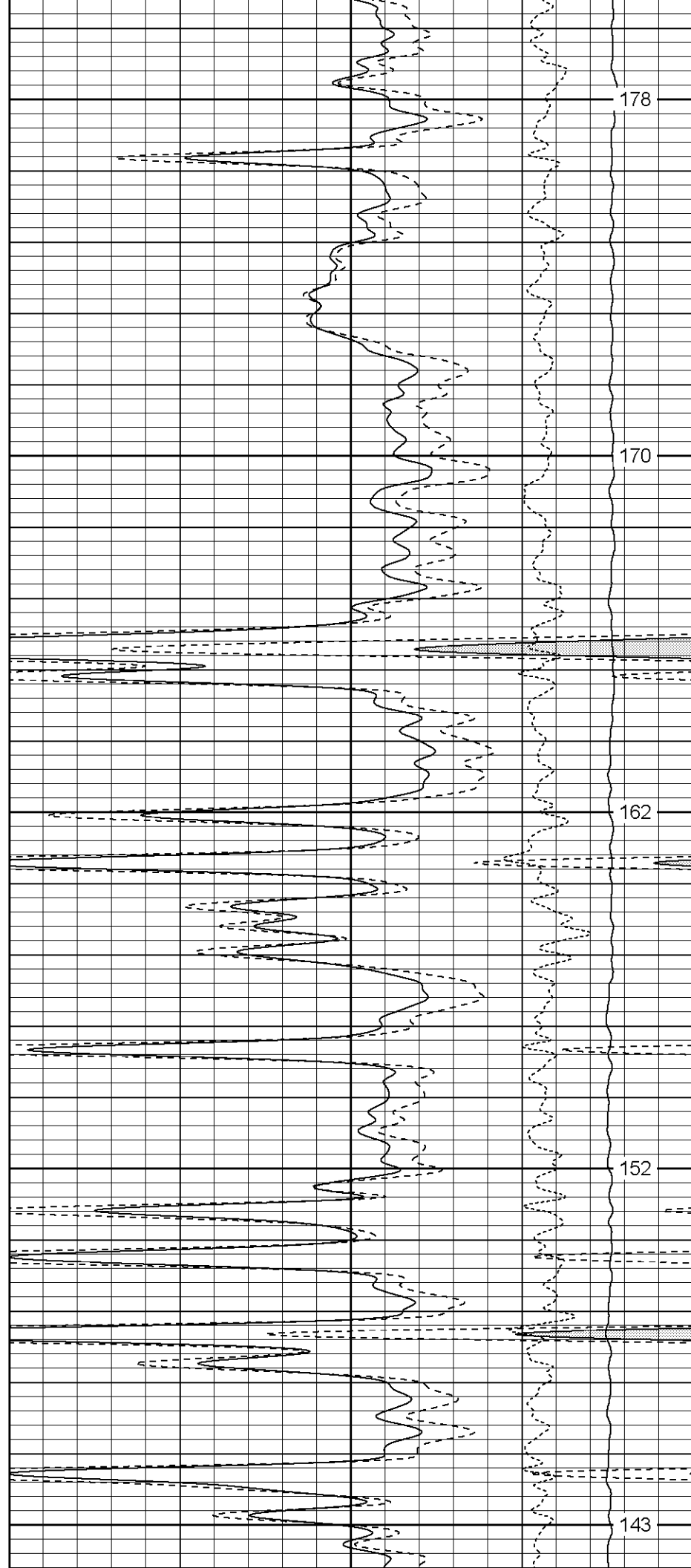
1650

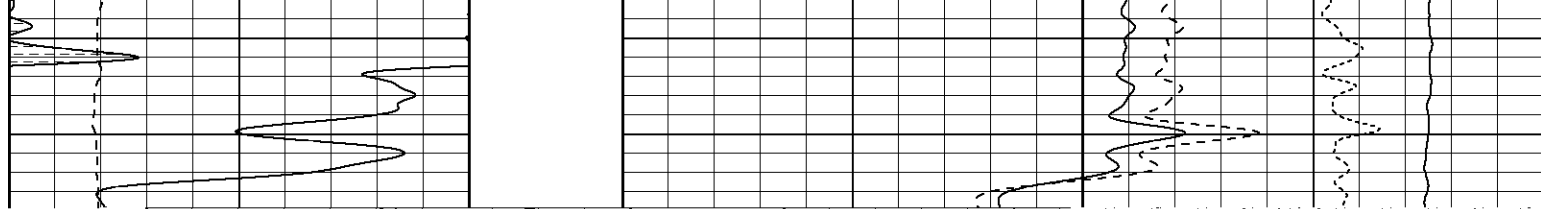
1700

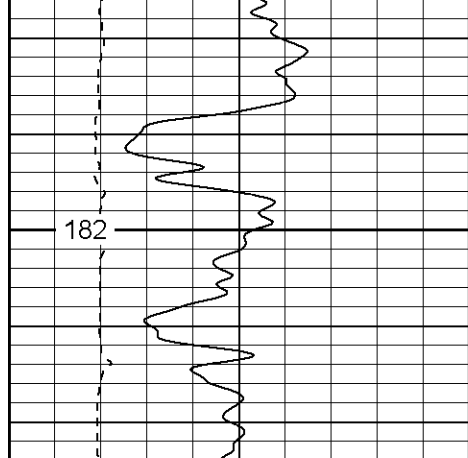
1750

1800

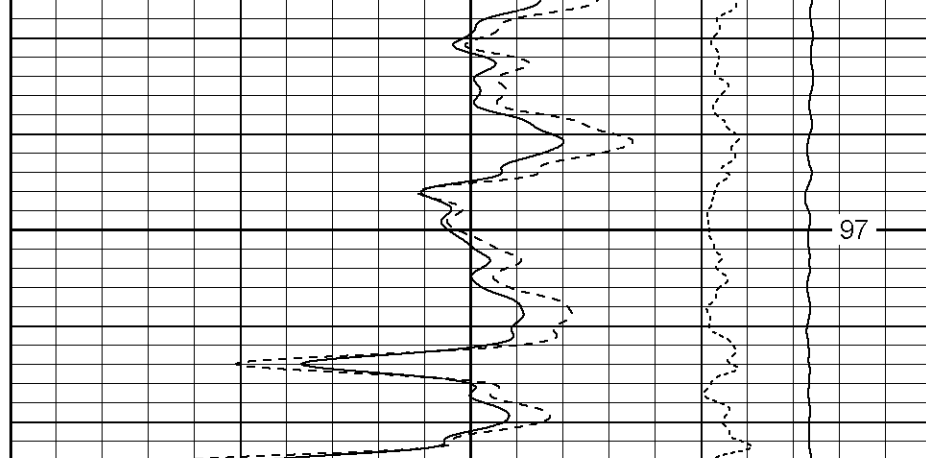
1850



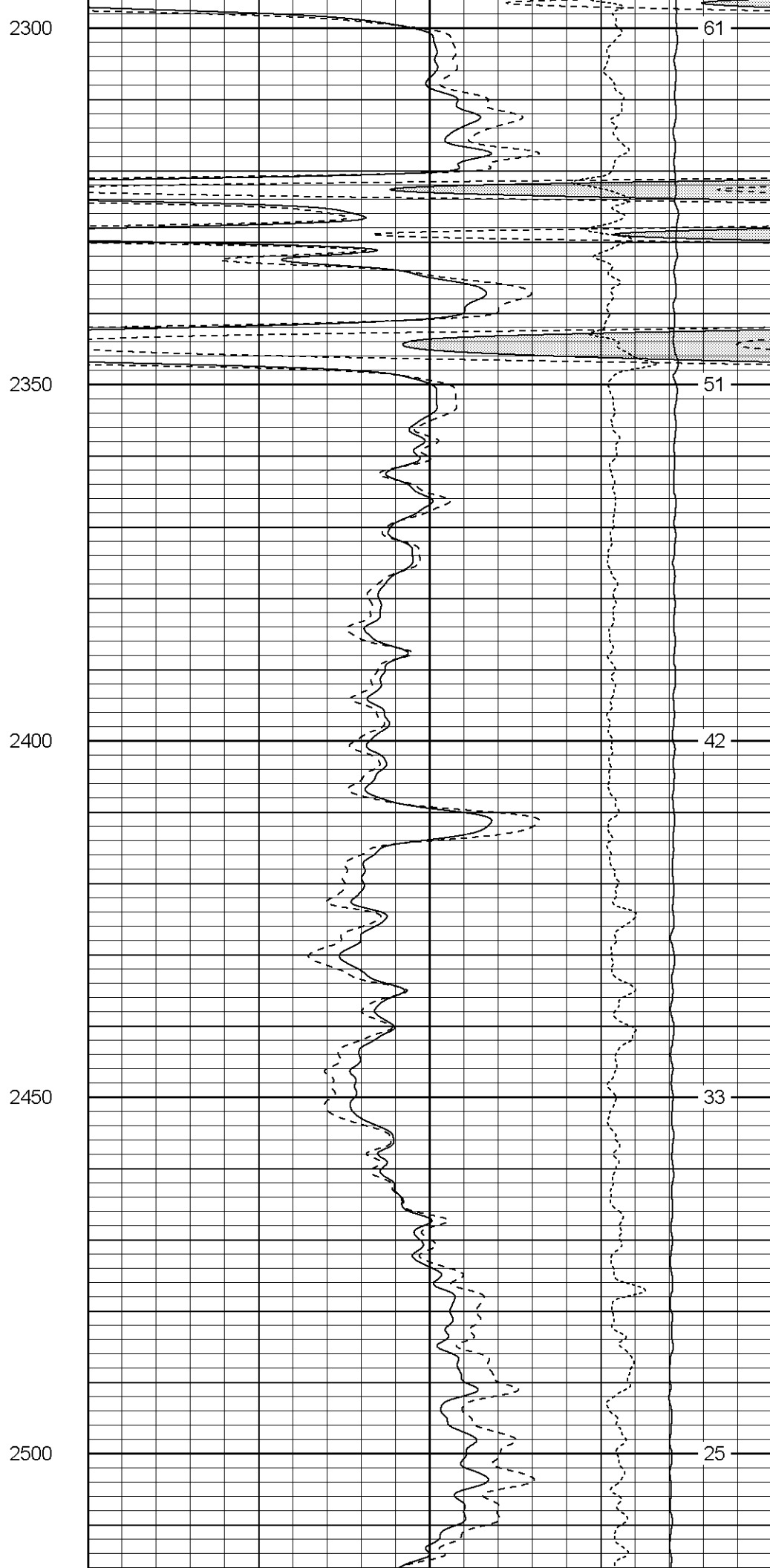
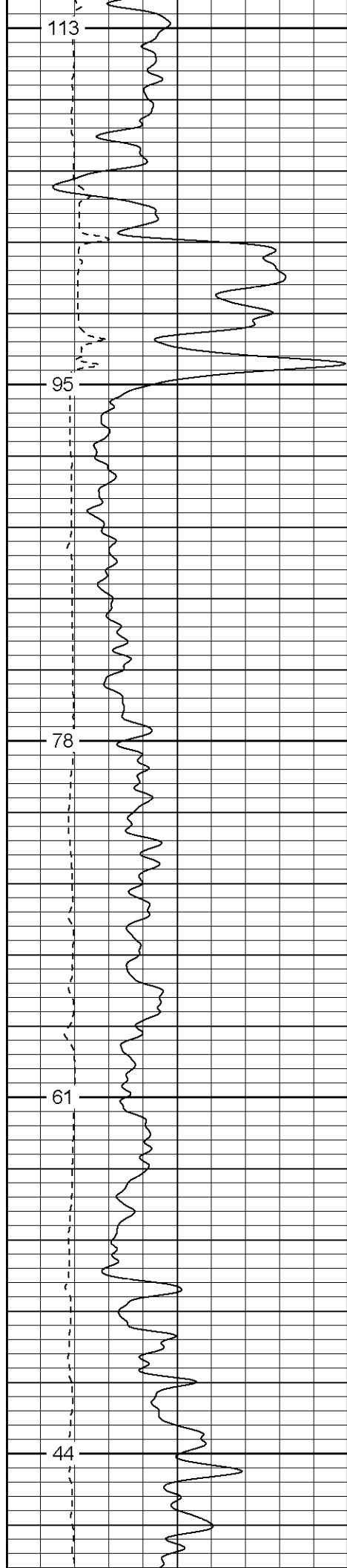


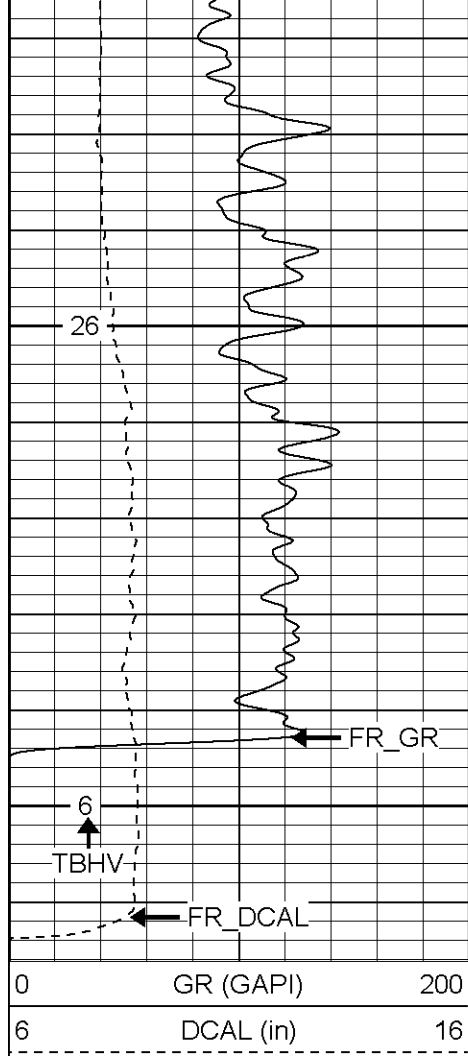


2100



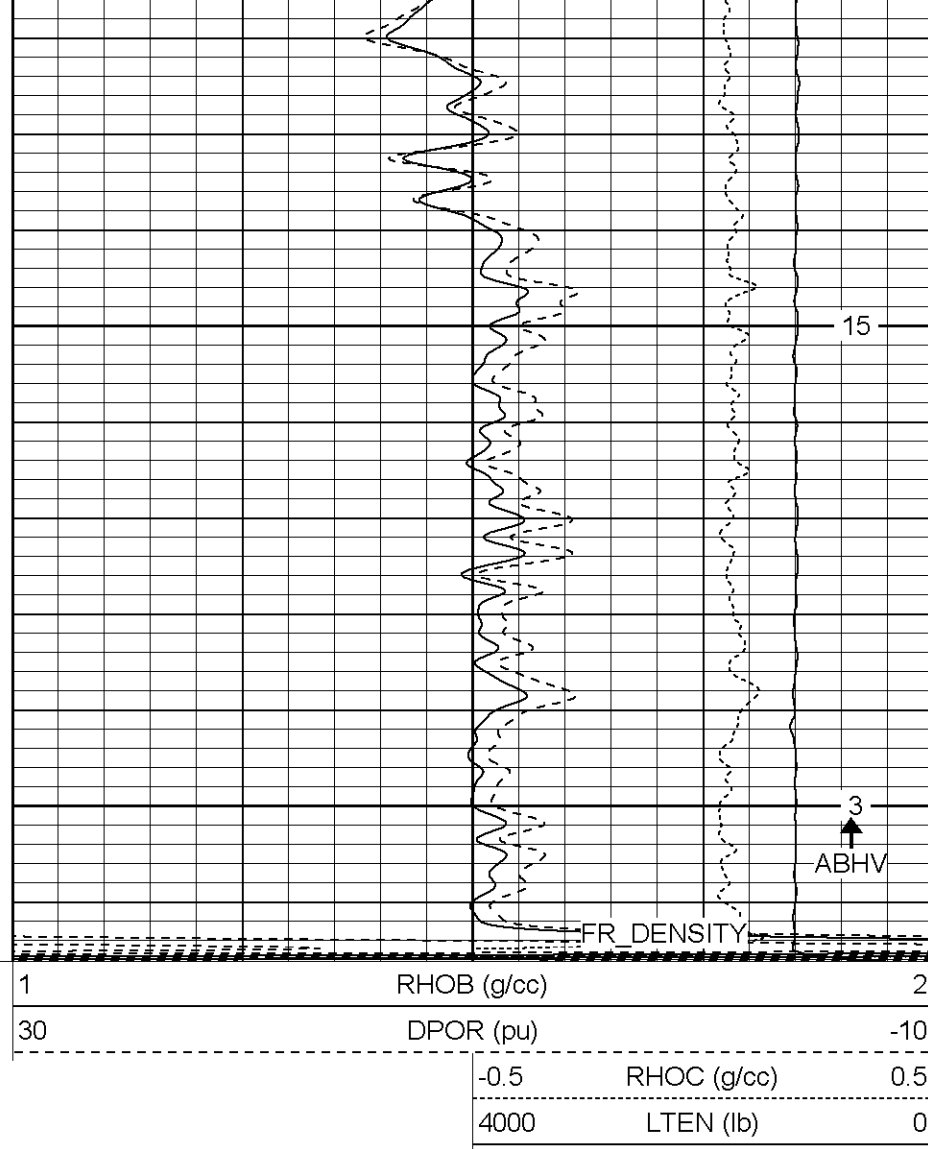






2550

2600



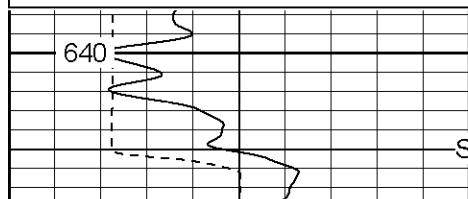
**Patterson**

**Main Pass**

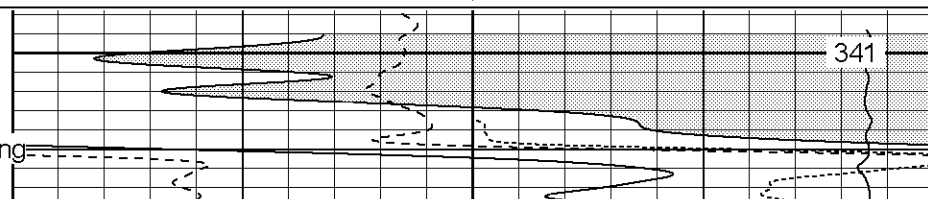
Database File: xtoac31-16.db  
 Dataset Pathname: pass5  
 Presentation Format: cdnl  
 Dataset Creation: Sun Jul 16 00:26:54 2006 by Log Warrior 7.0 STD Ope  
 Charted by: Depth in Feet scaled 1:240

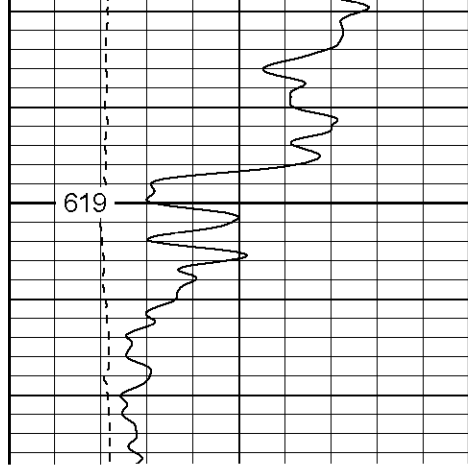
0	GR (GAPI)	200
6	DCAL (in)	16

30	NPOR (pu)	-10
30	DPOR (pu)	-10
-0.5	RHOC (g/cc)	0.5
5000	LTEN (lb)	0

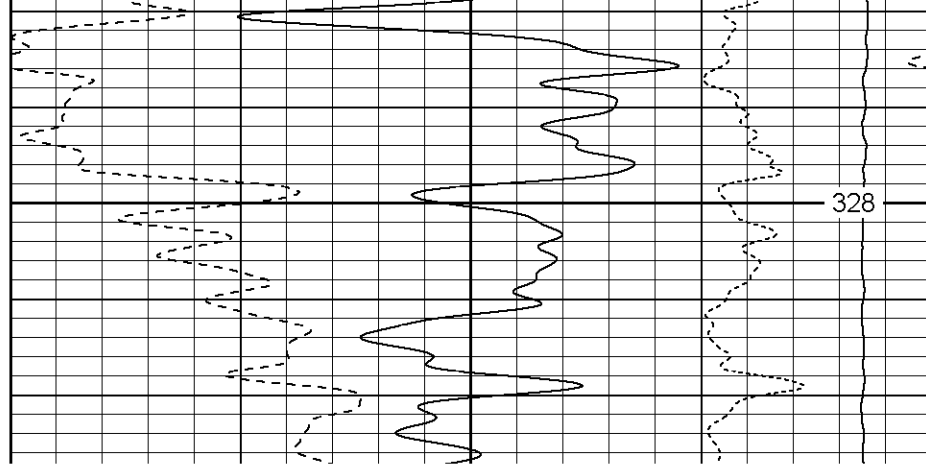


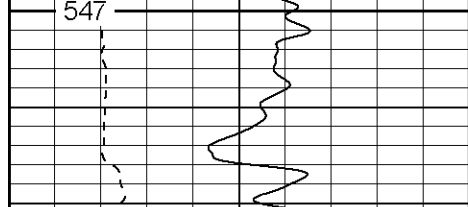
800



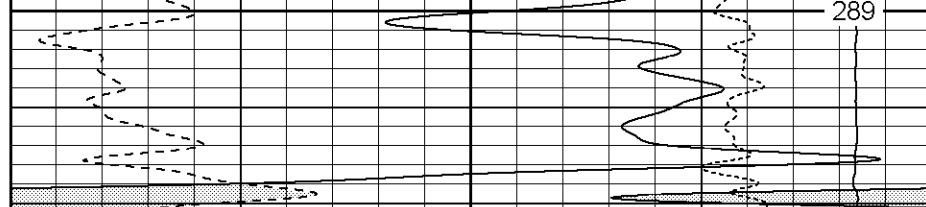


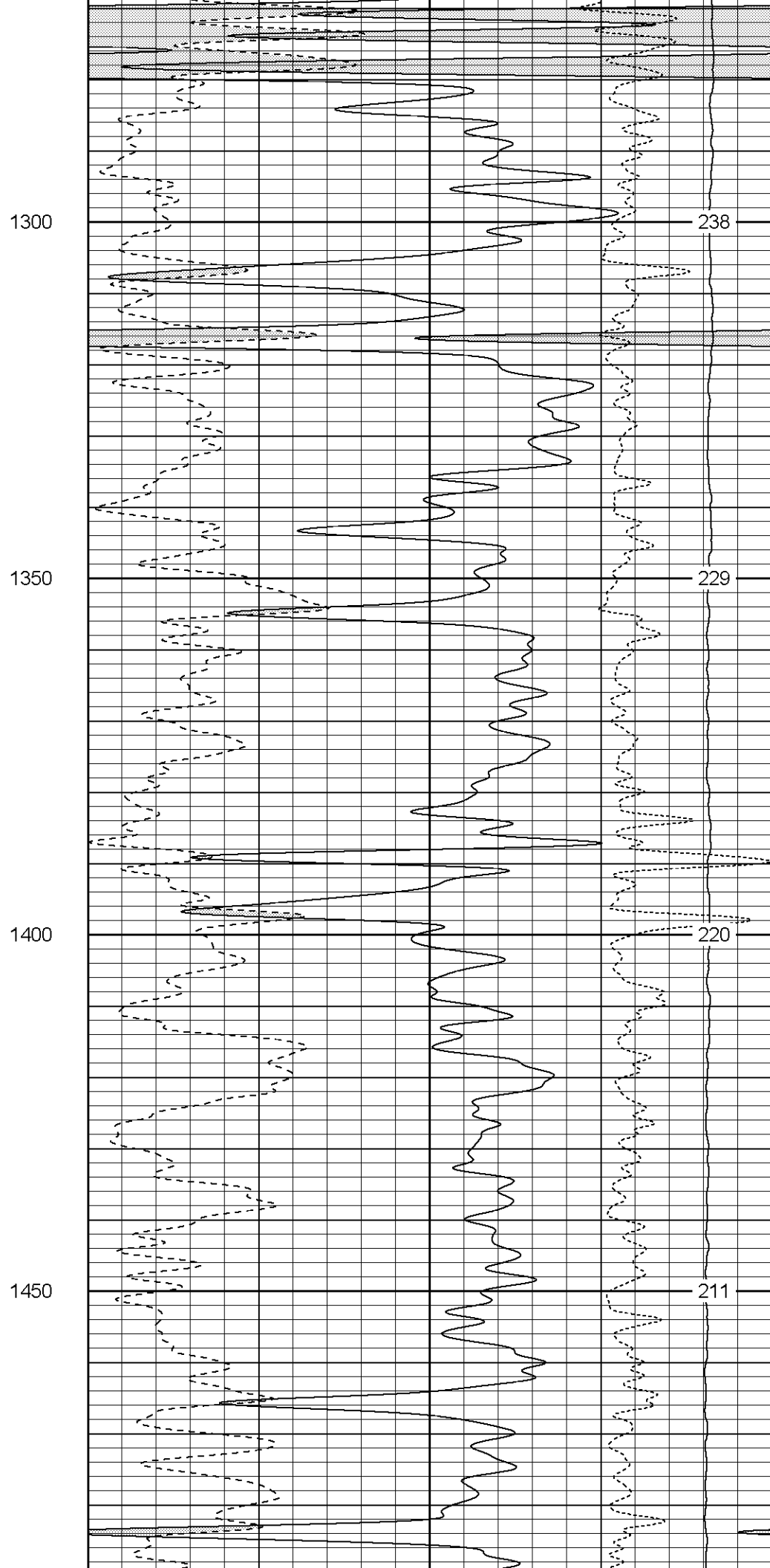
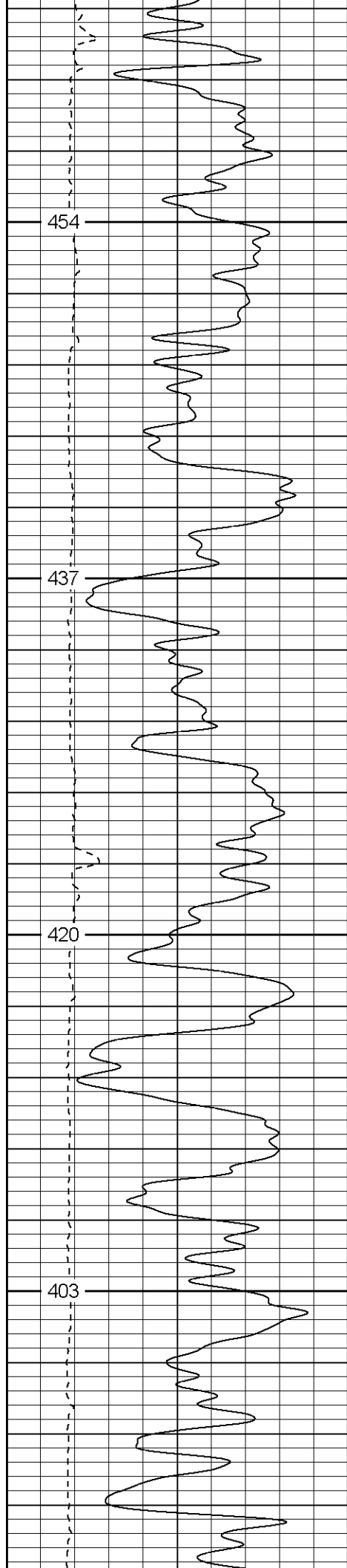
850

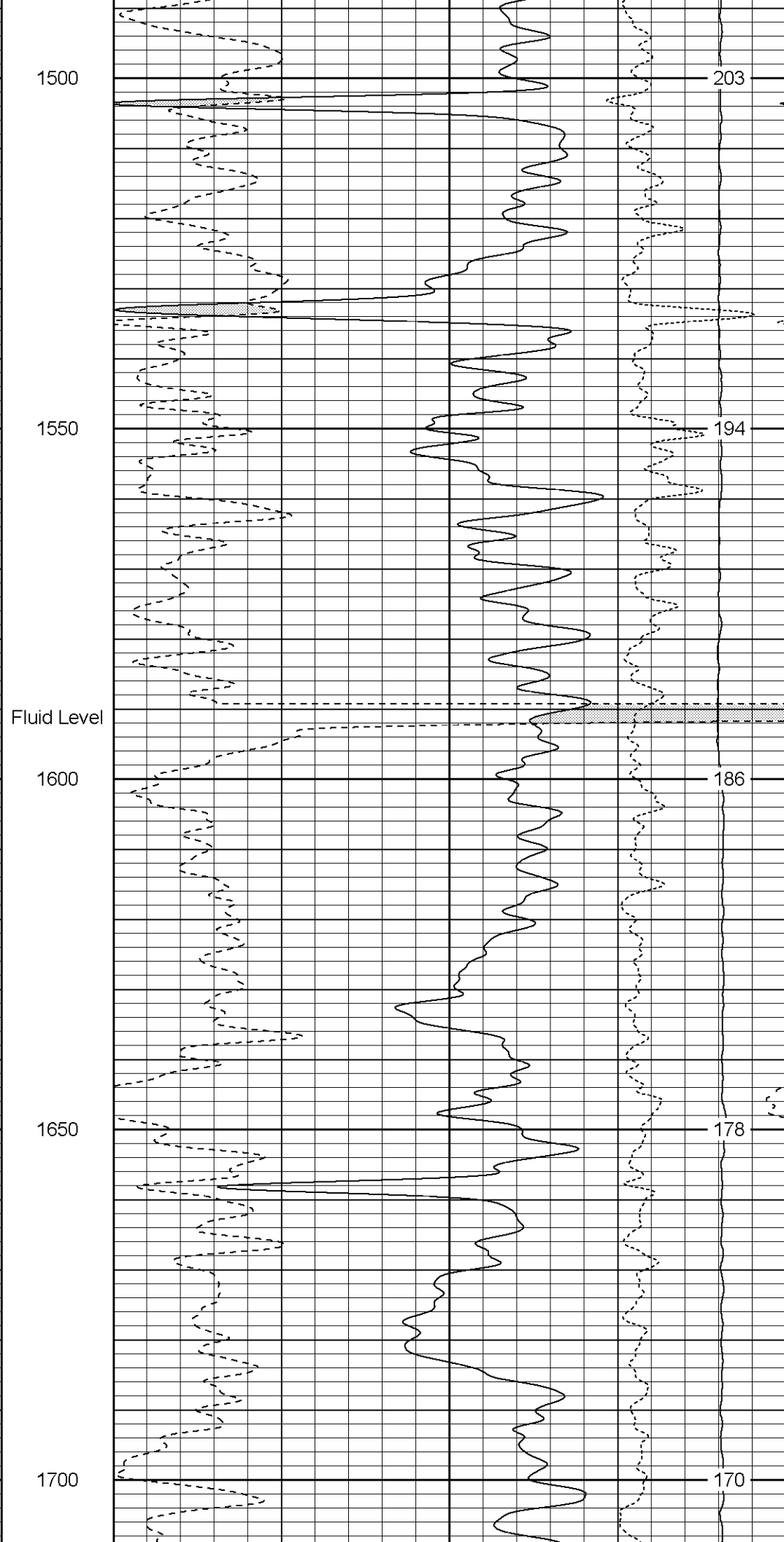
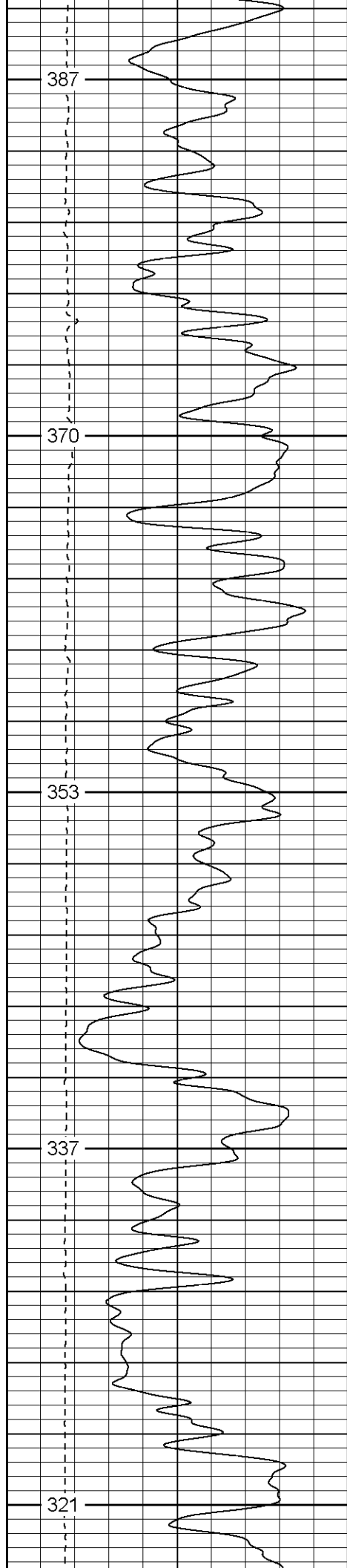


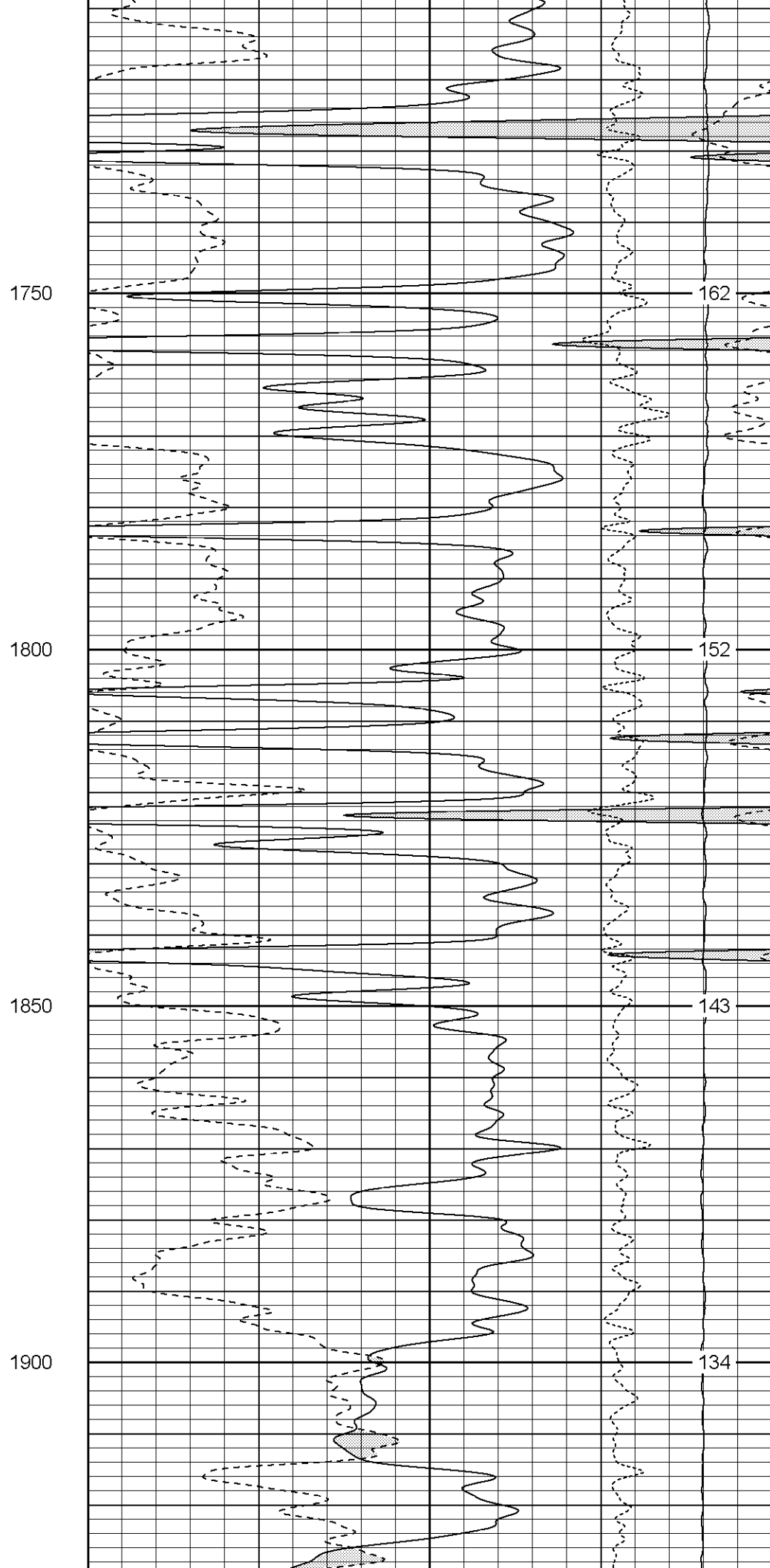
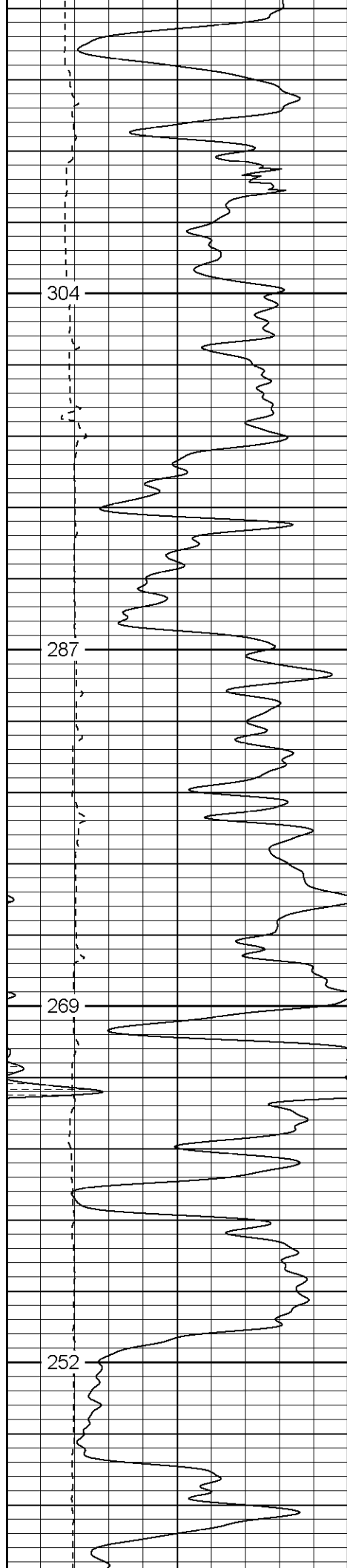


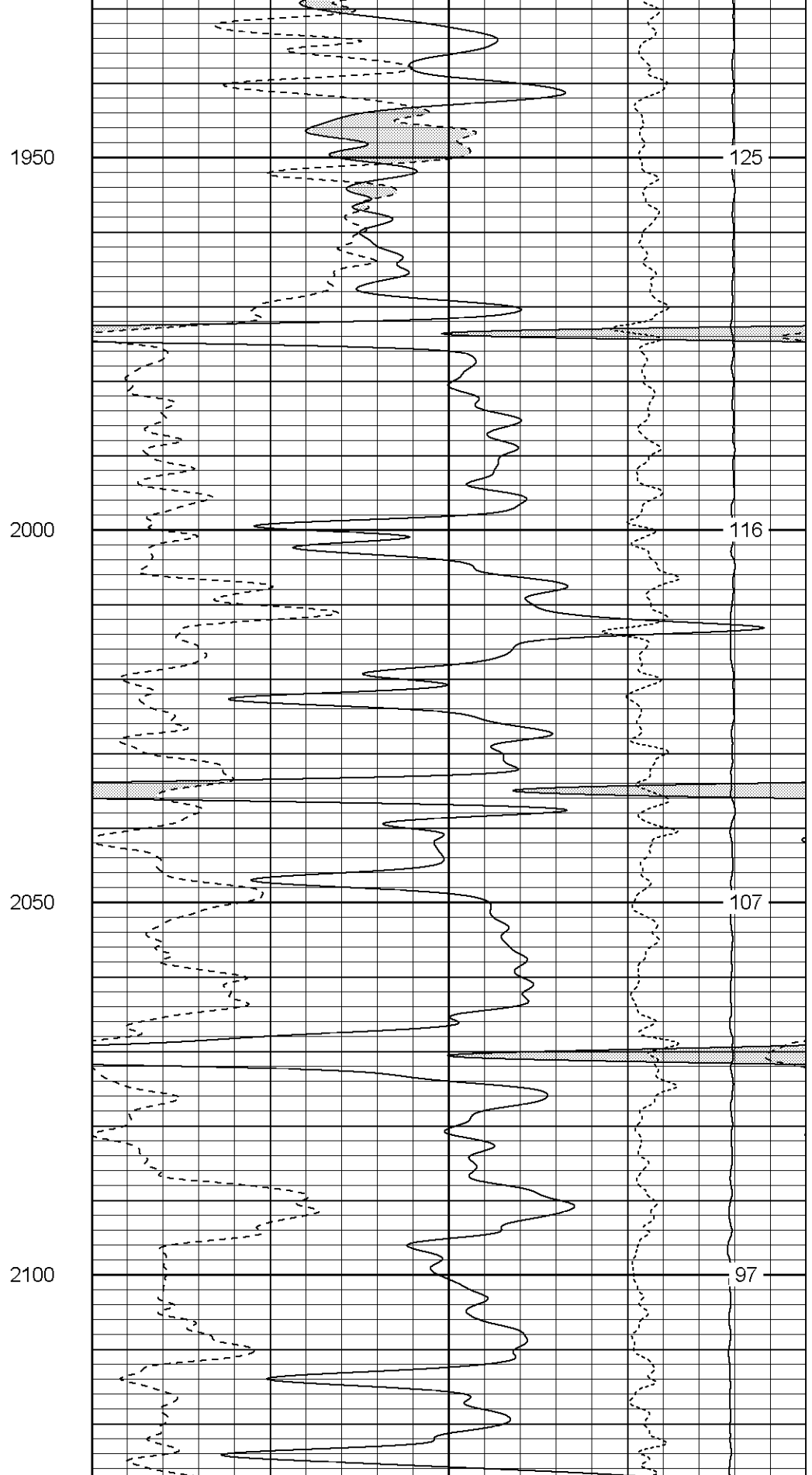
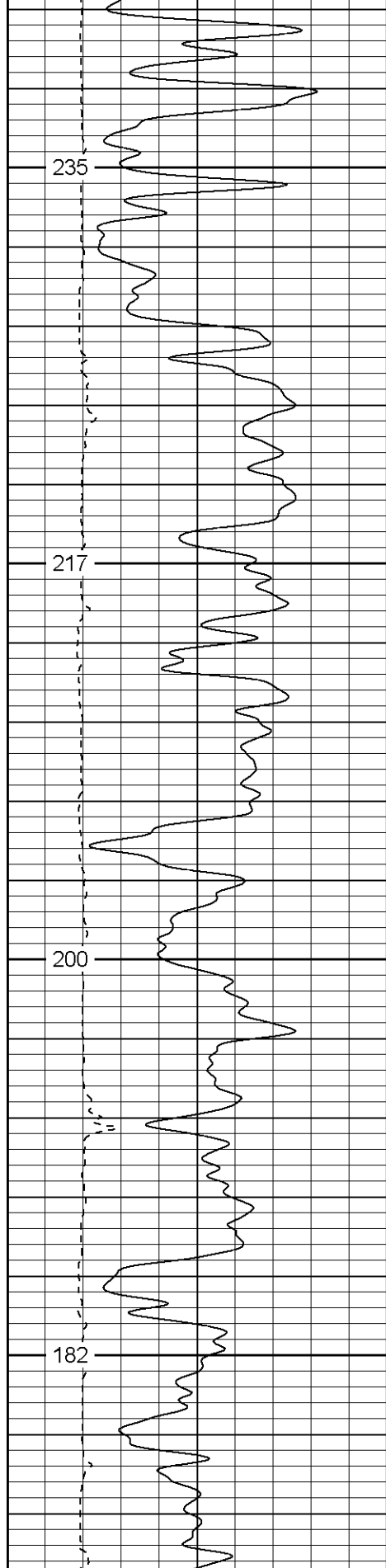
1050



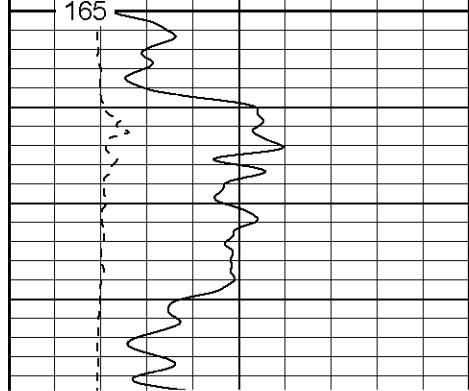




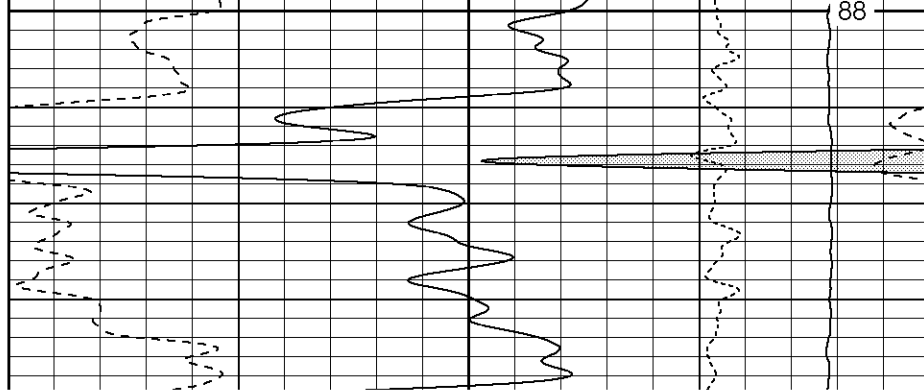


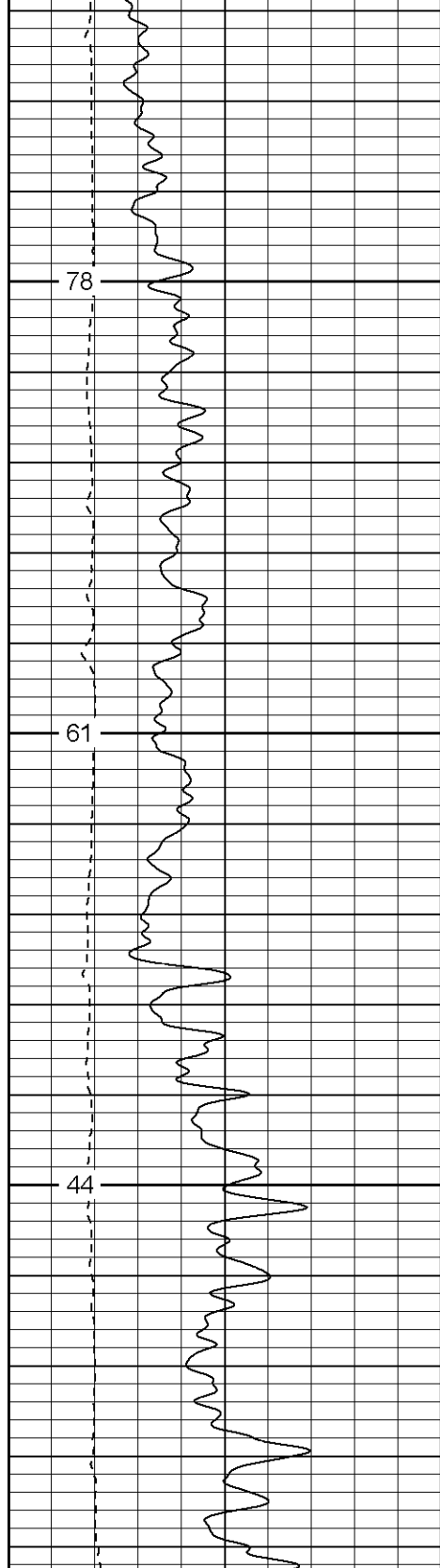






2150

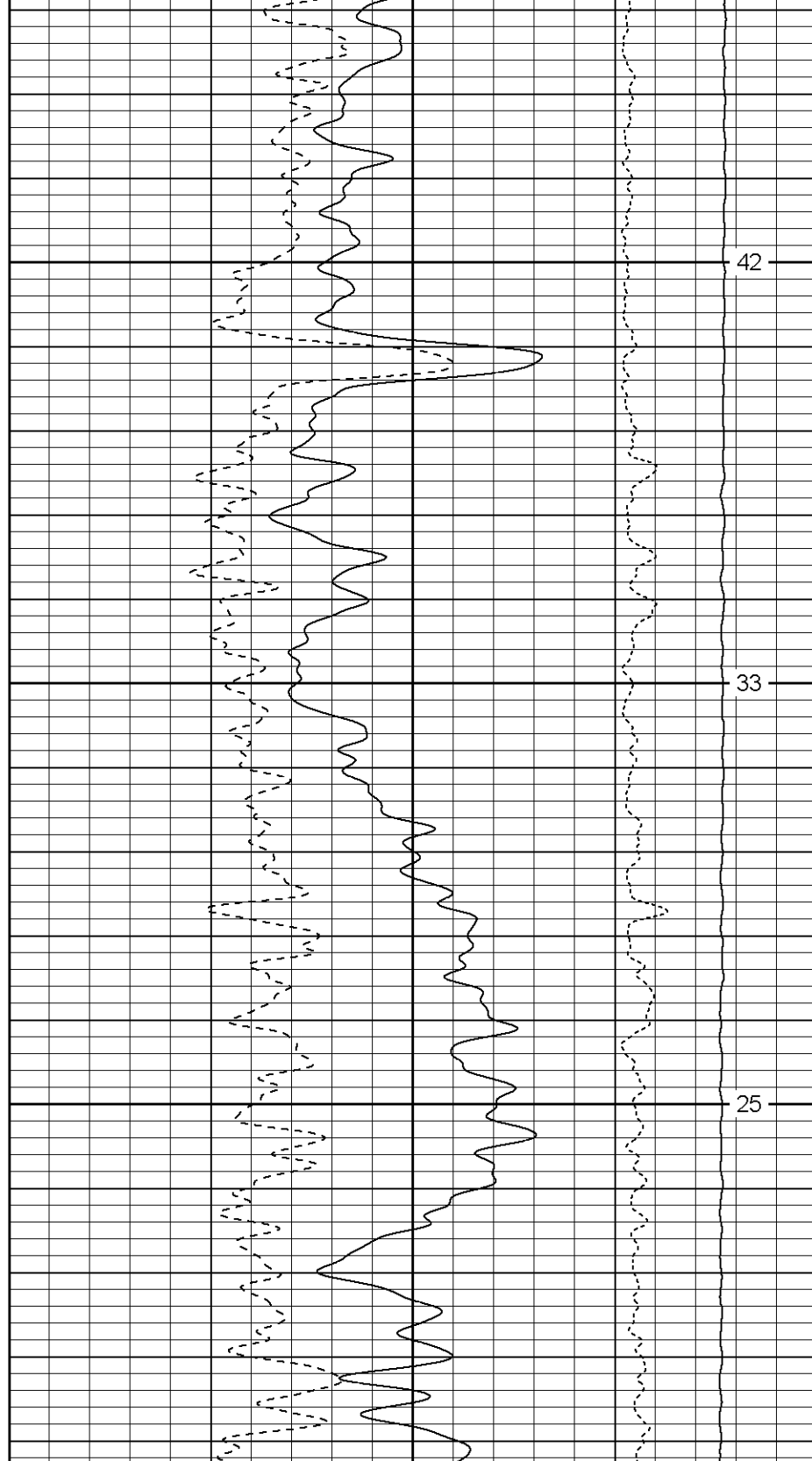


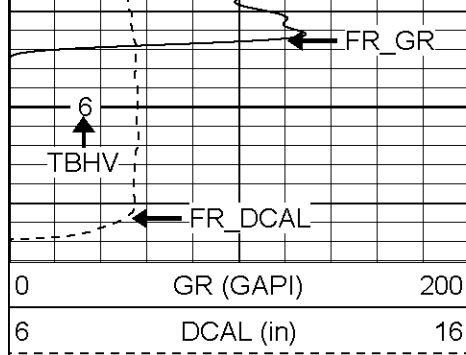


2400

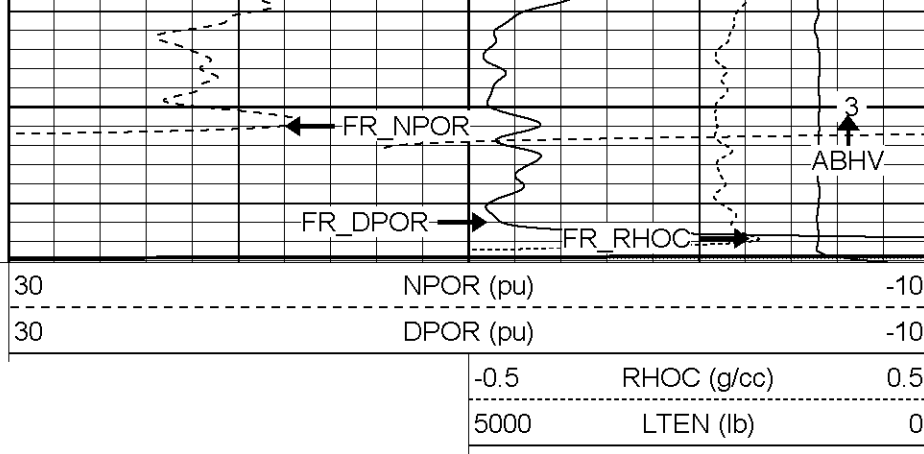
2450

2500





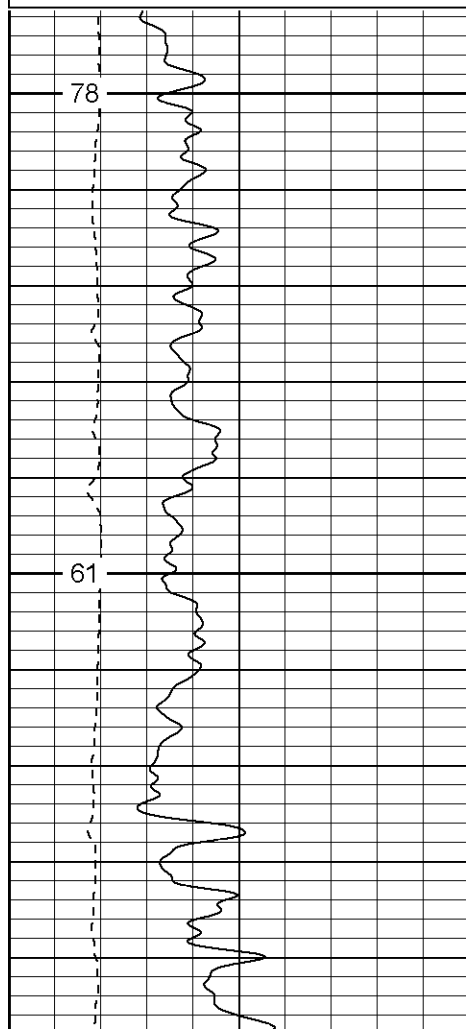
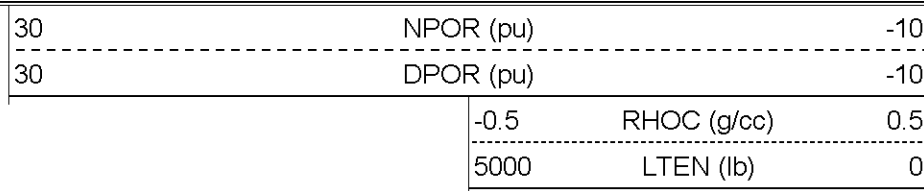
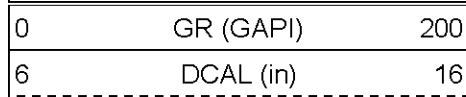
2600



**Patterson**

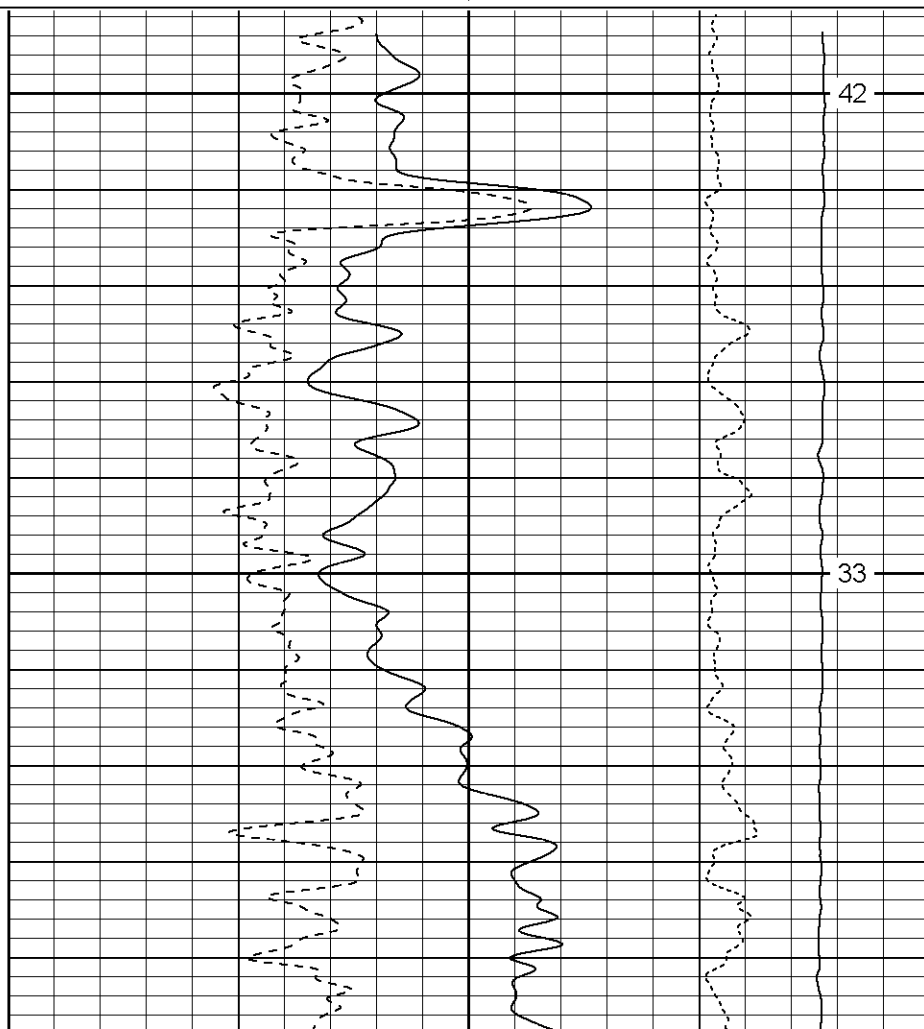
# Repeat Section

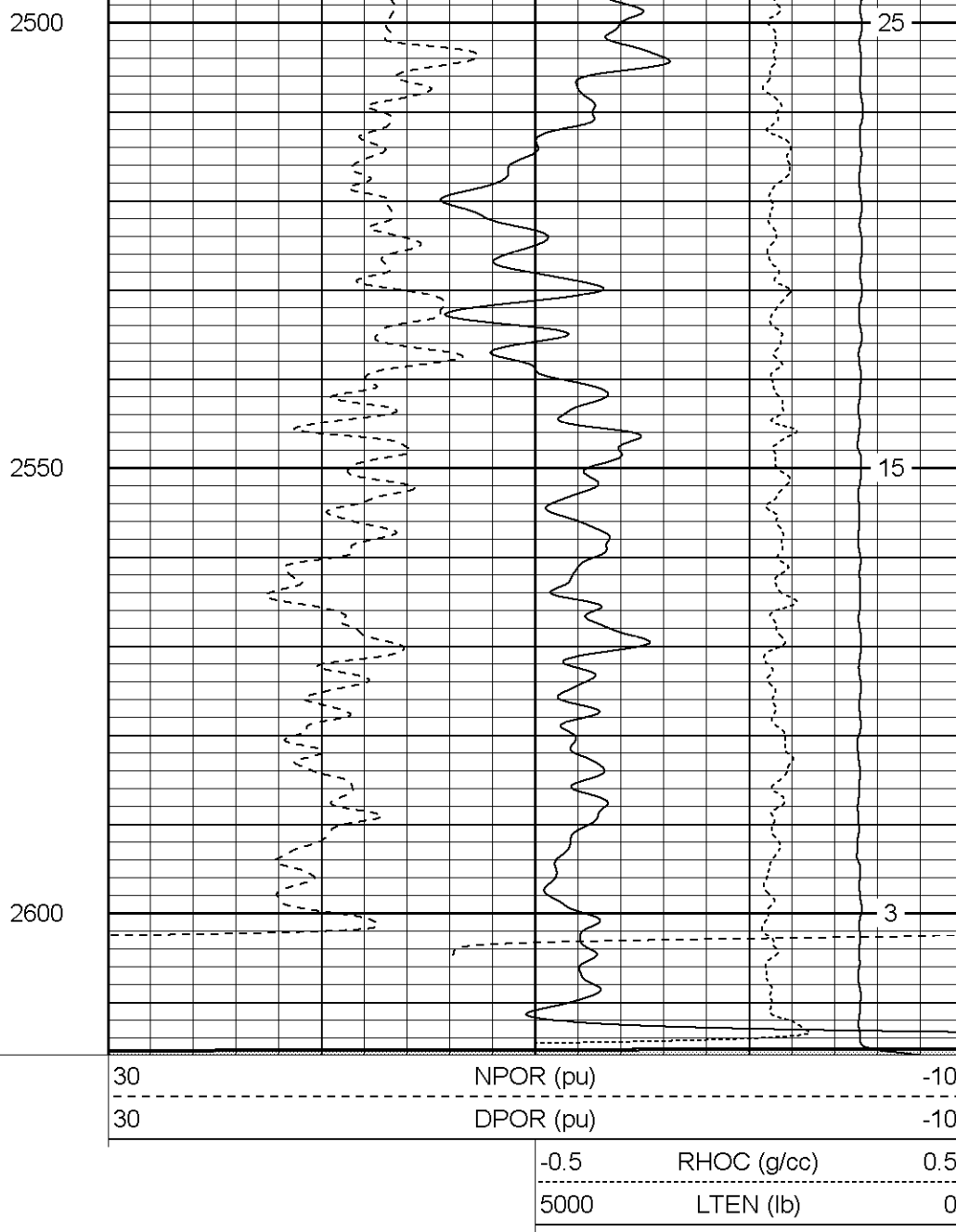
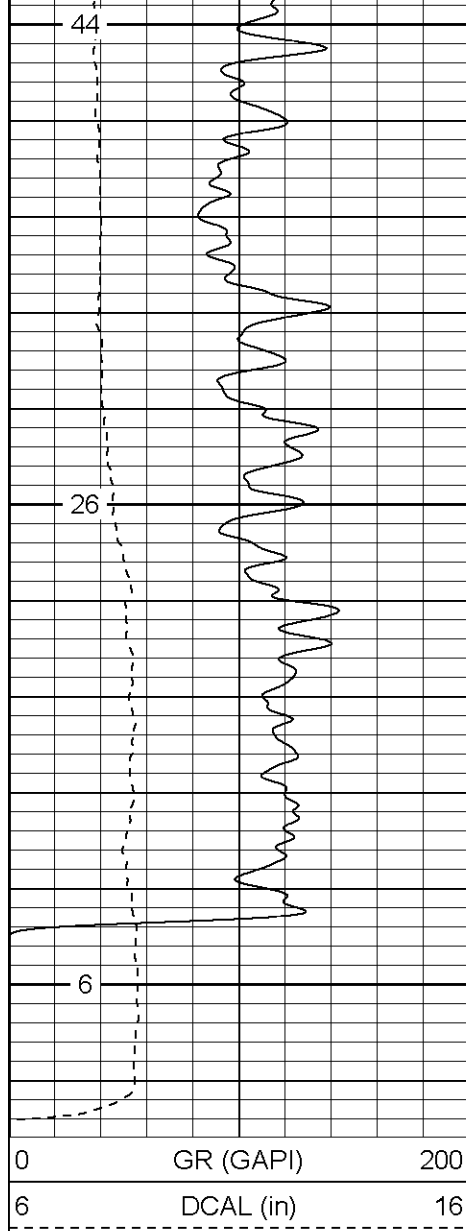
Database File: xtoac31-16.db  
 Dataset Pathname: pass4  
 Presentation Format: cdnl  
 Dataset Creation: Sun Jul 16 00:13:34 2006 by Log Warrior 7.0 STD Ope  
 Charted by: Depth in Feet scaled 1:240



2400

2450

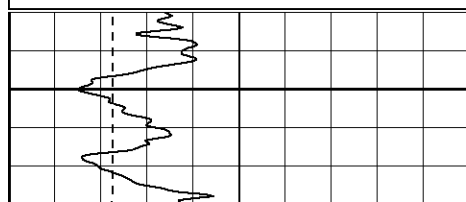
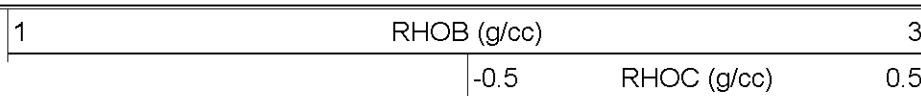




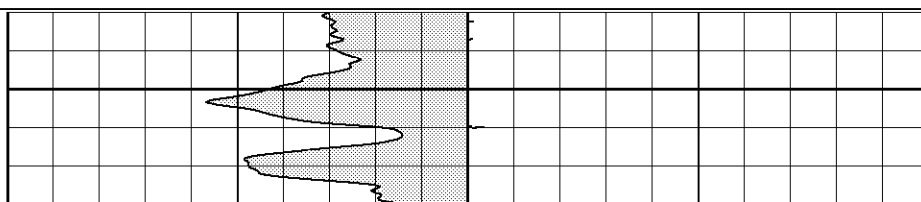
**Patterson**

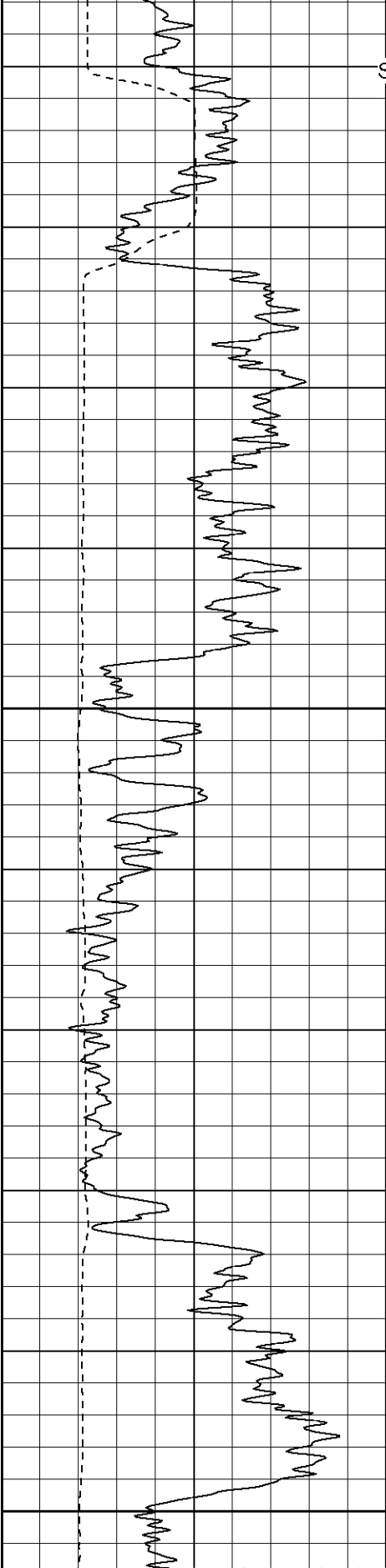
# High Resolution Pass

Database File: xtoac31-16.db  
 Dataset Pathname: pass5.4  
 Presentation Format: cd1hr  
 Dataset Creation: Mon Jul 17 07:39:08 2006 by Calc Warrior 7.0 STD Ope  
 Charted by: Depth in Feet scaled 1:120



800

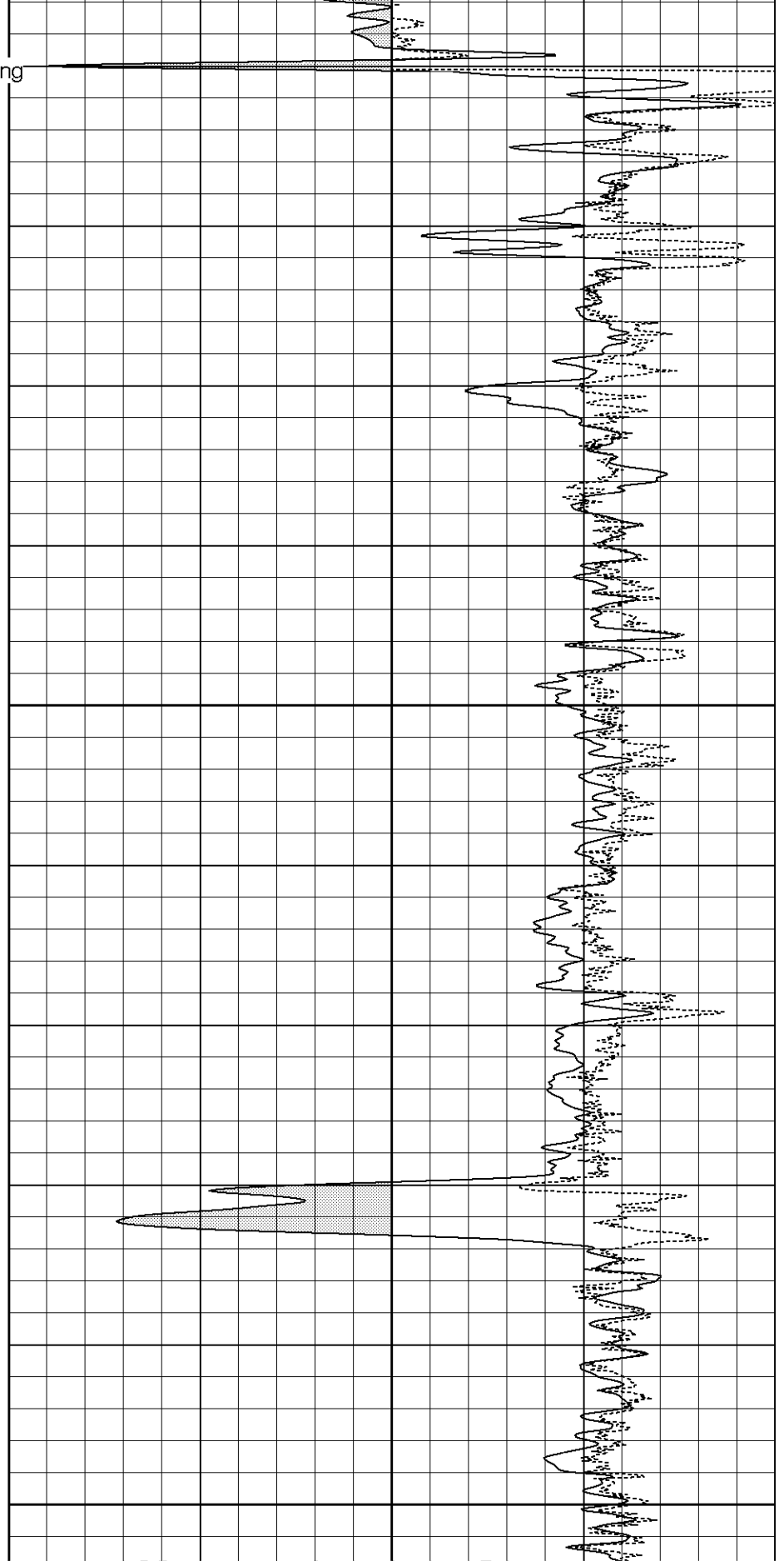


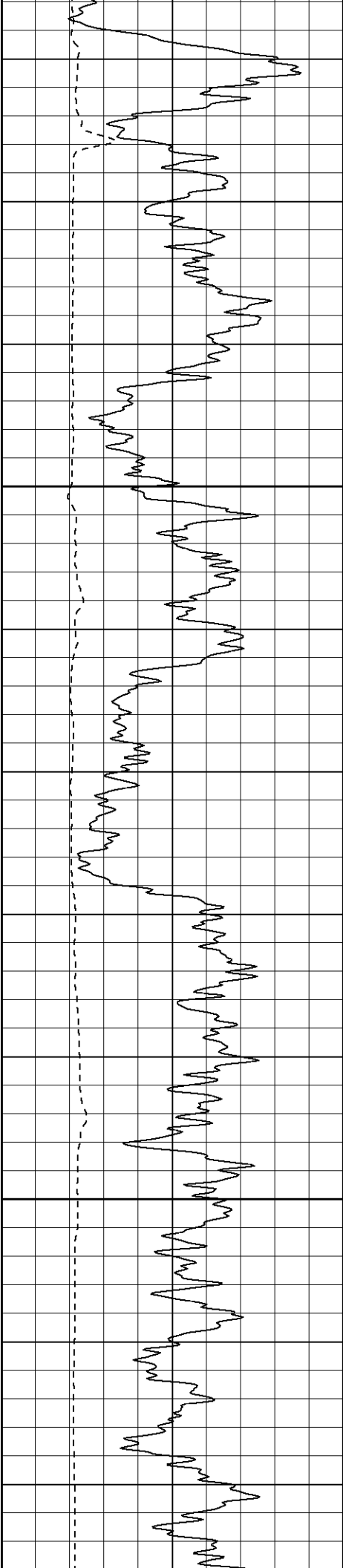


Surface Casing

850

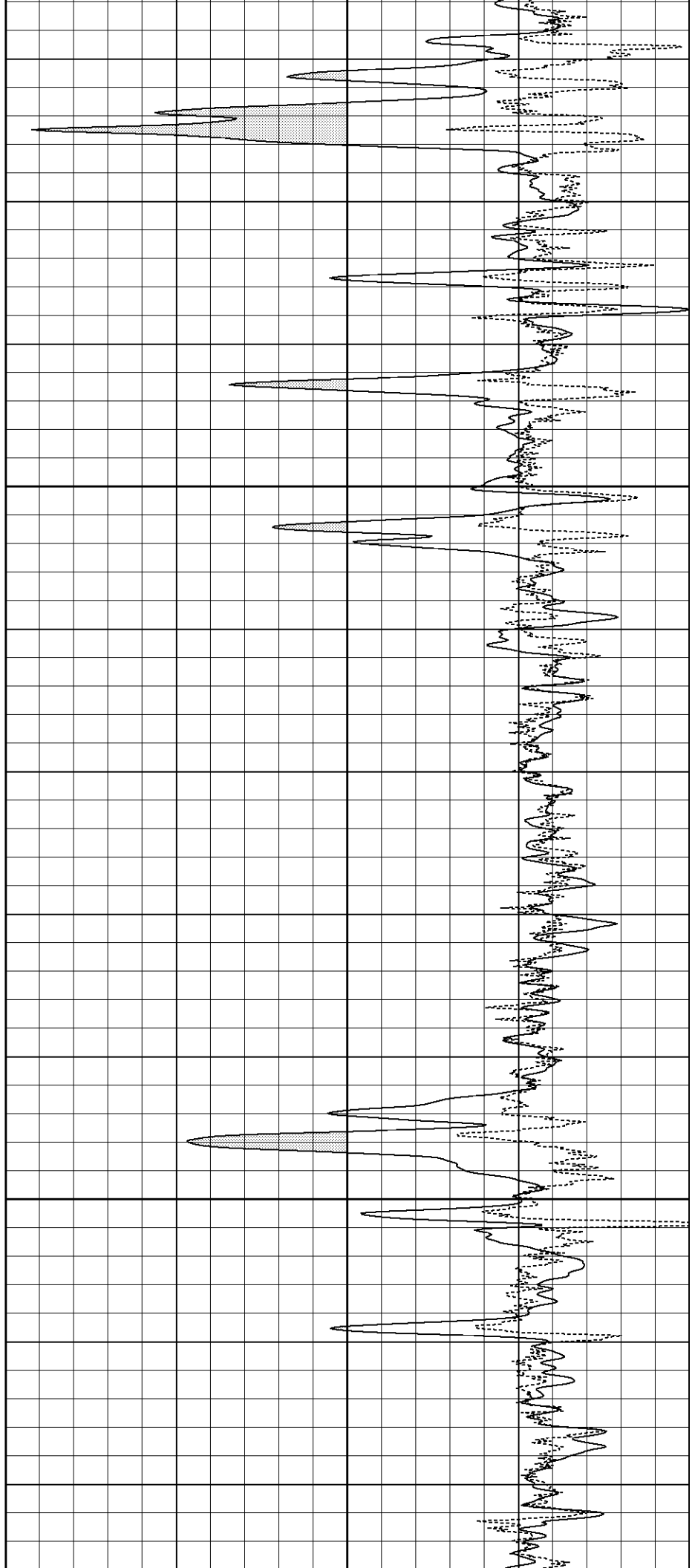
900

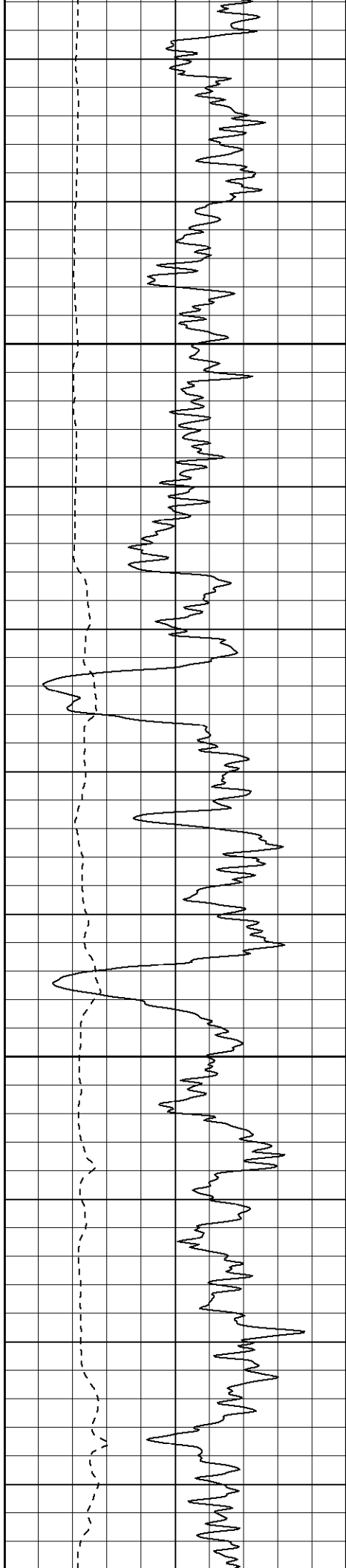




950

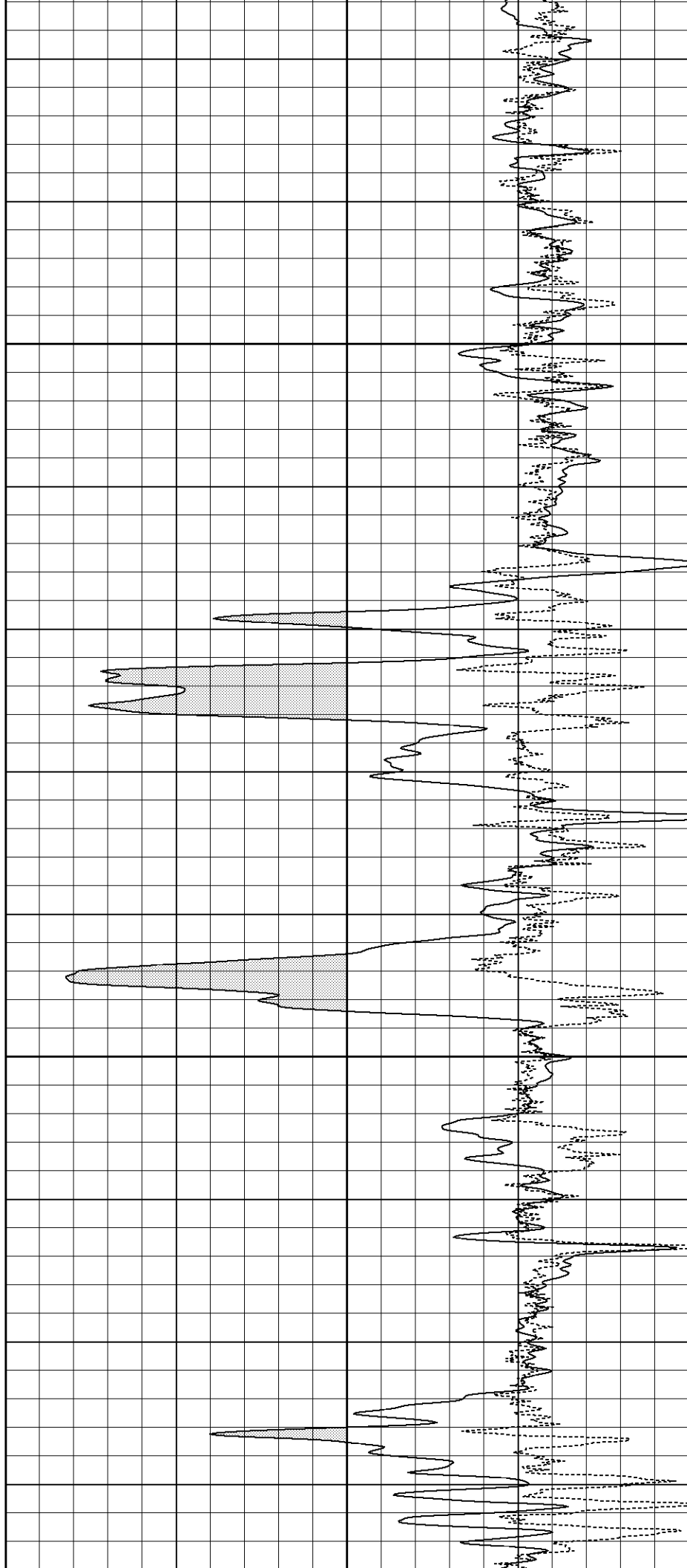
1000

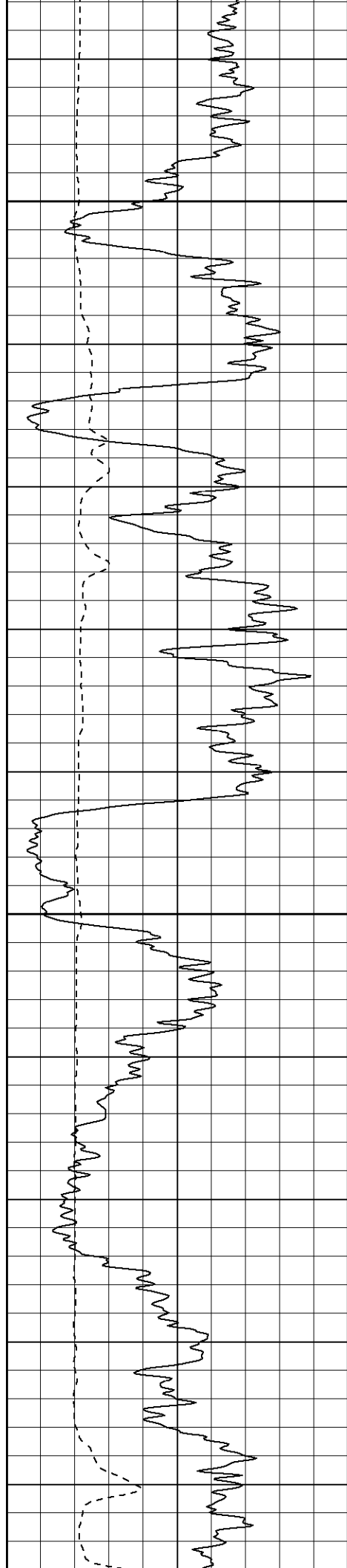




1050

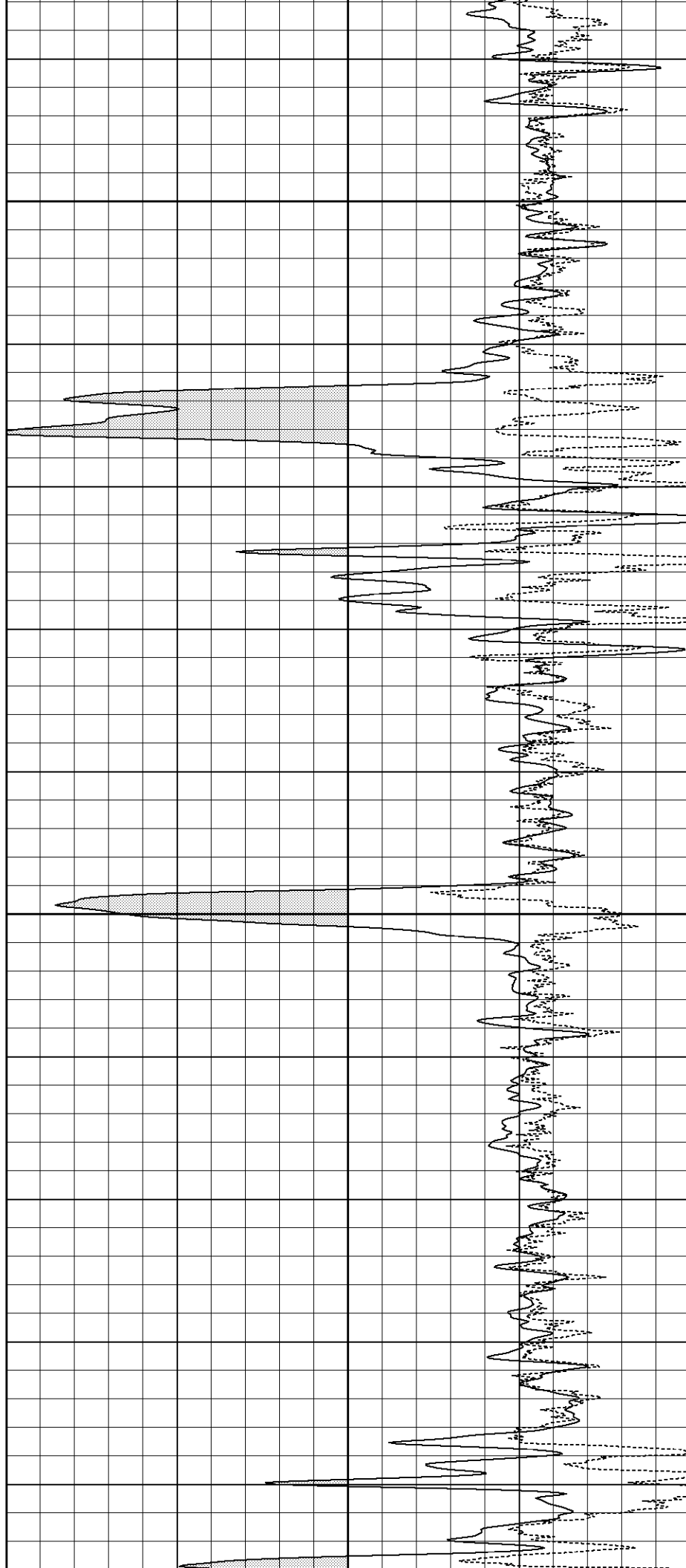
1100



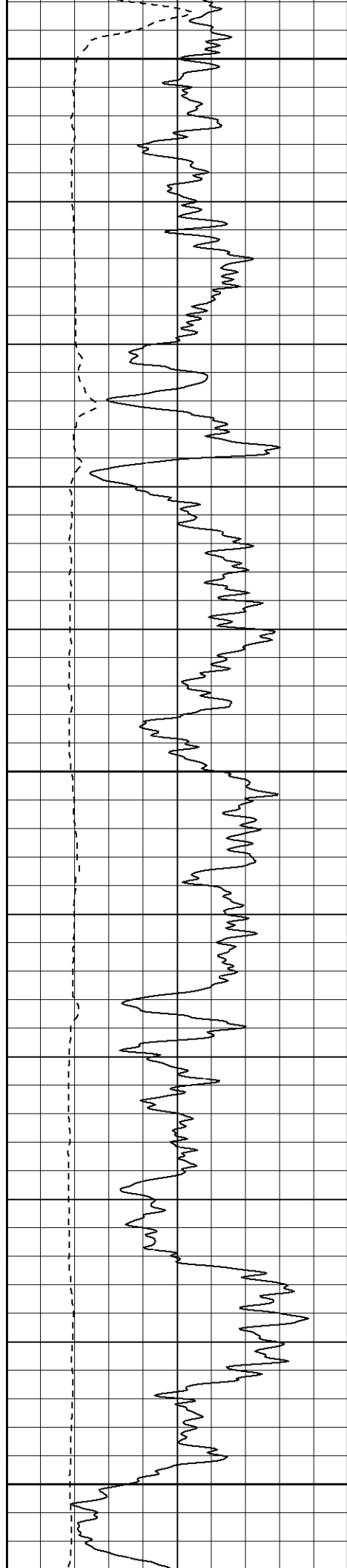


1150

1200



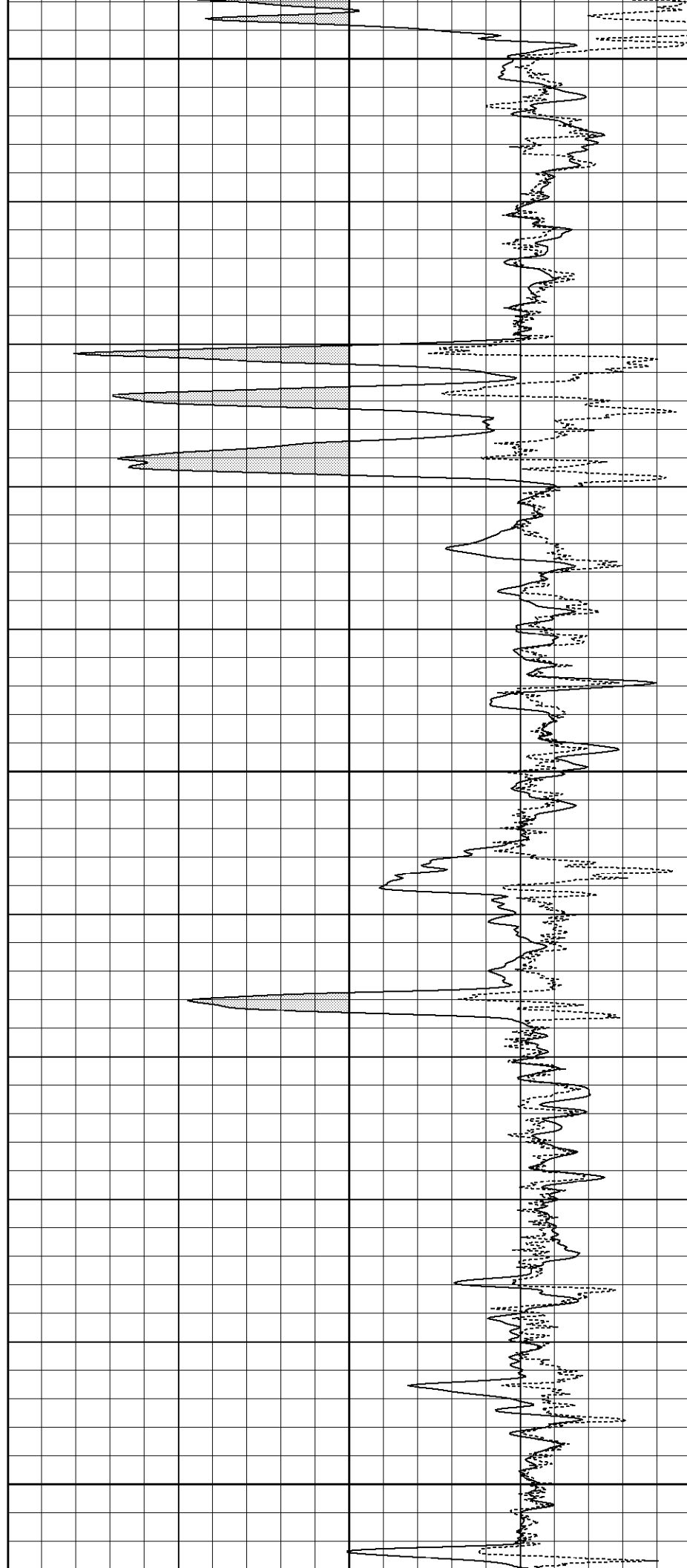


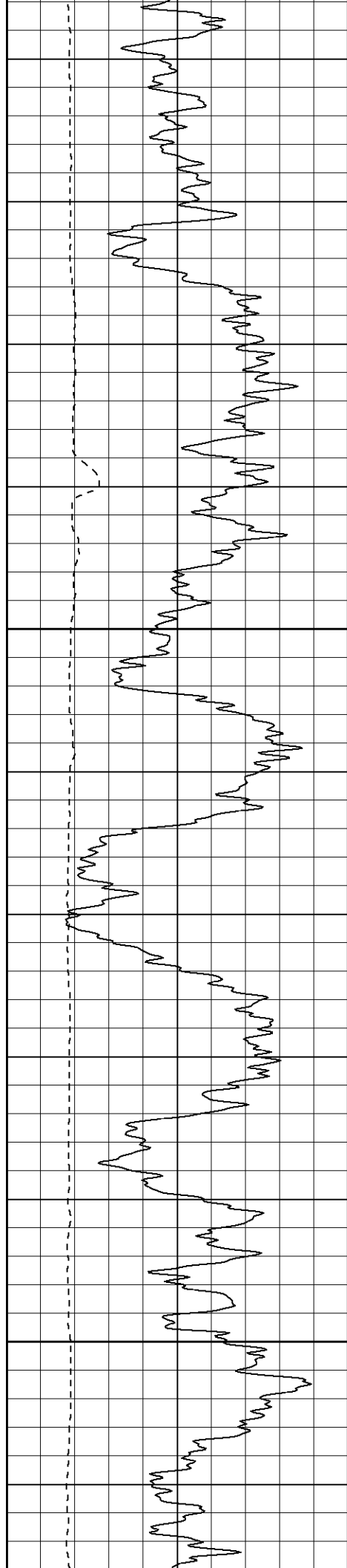


1250

1300

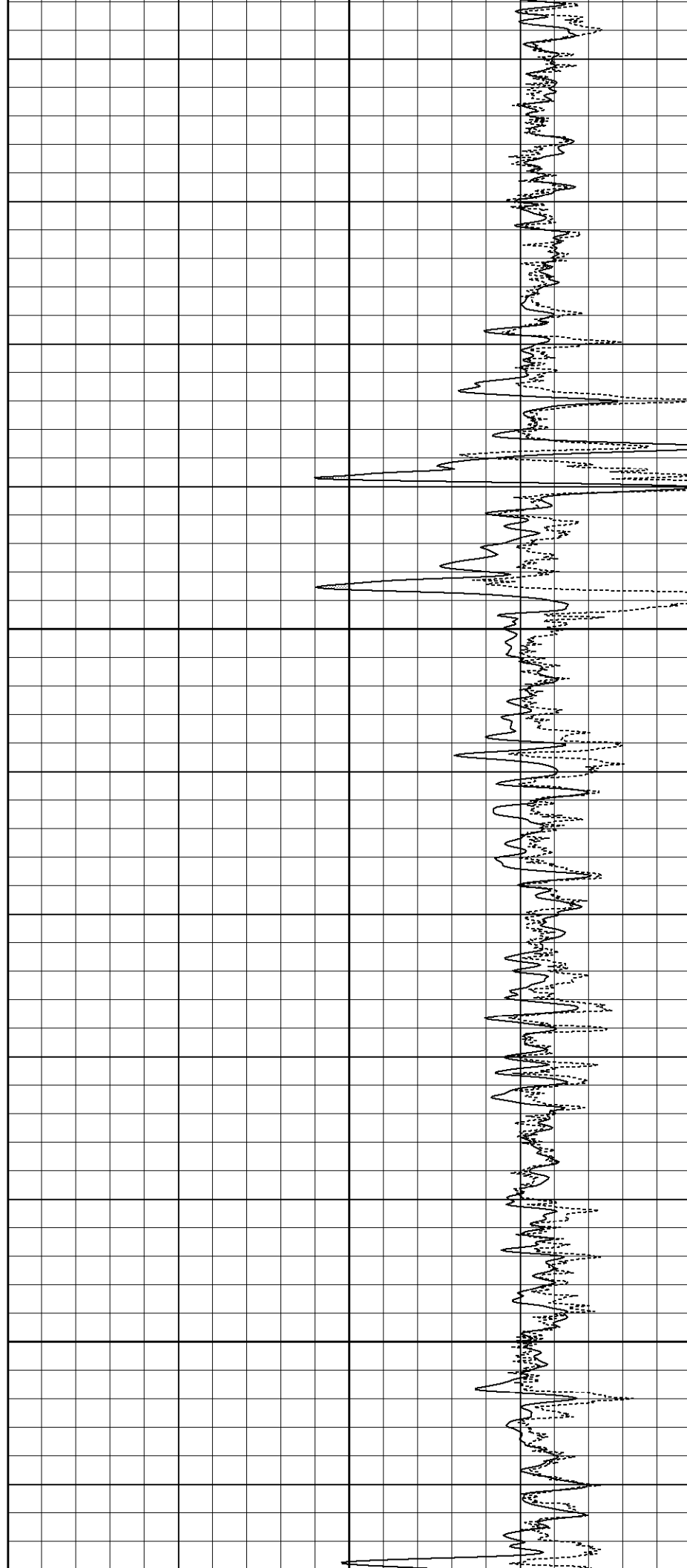
1350



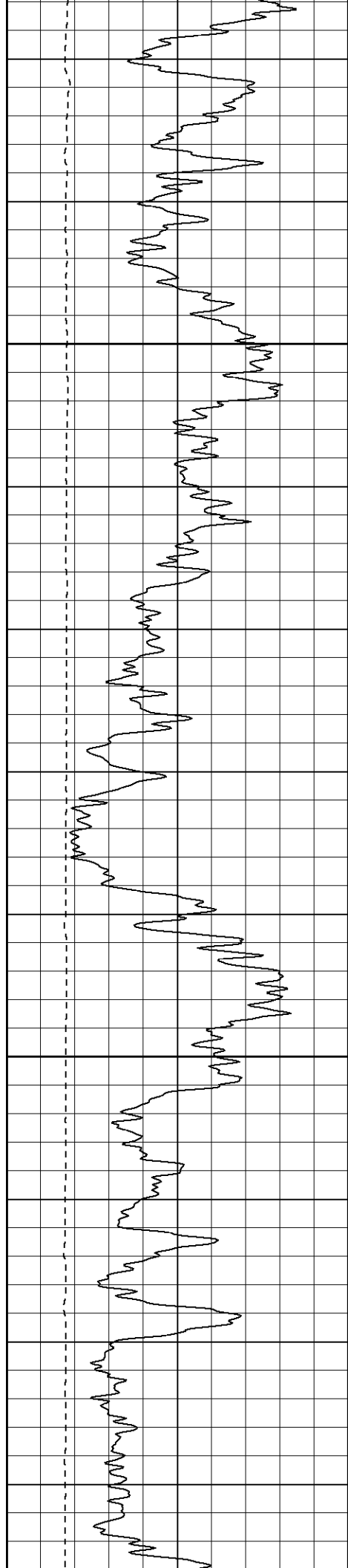


1400

1450

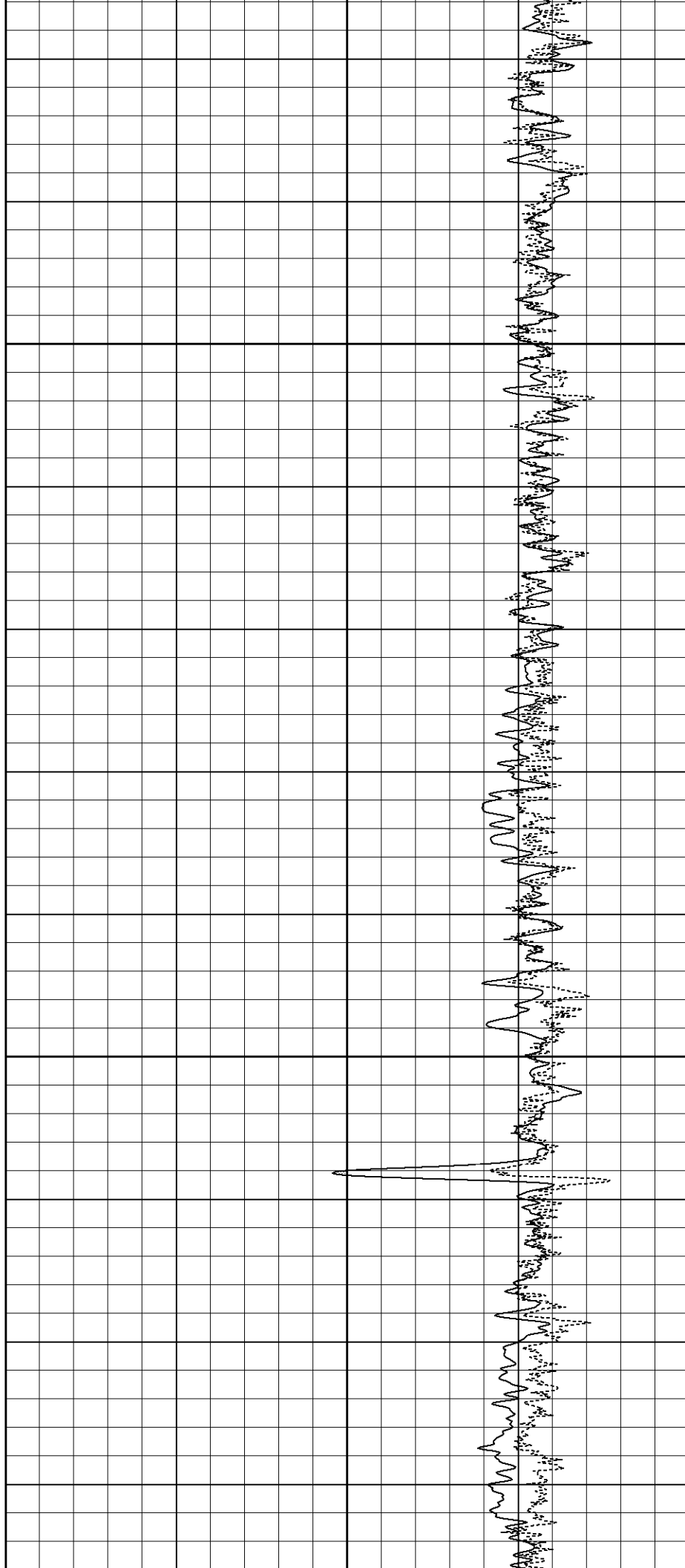




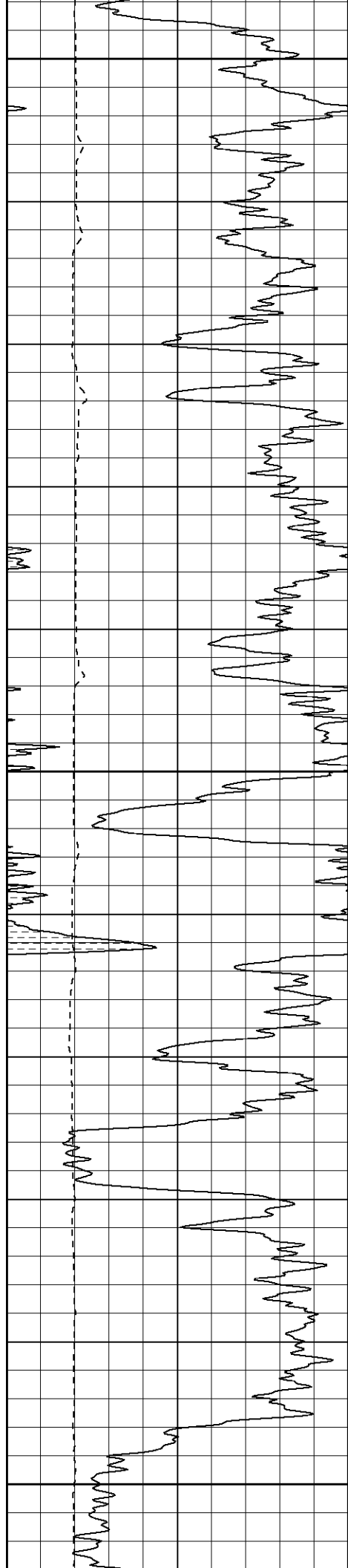


1600

1650



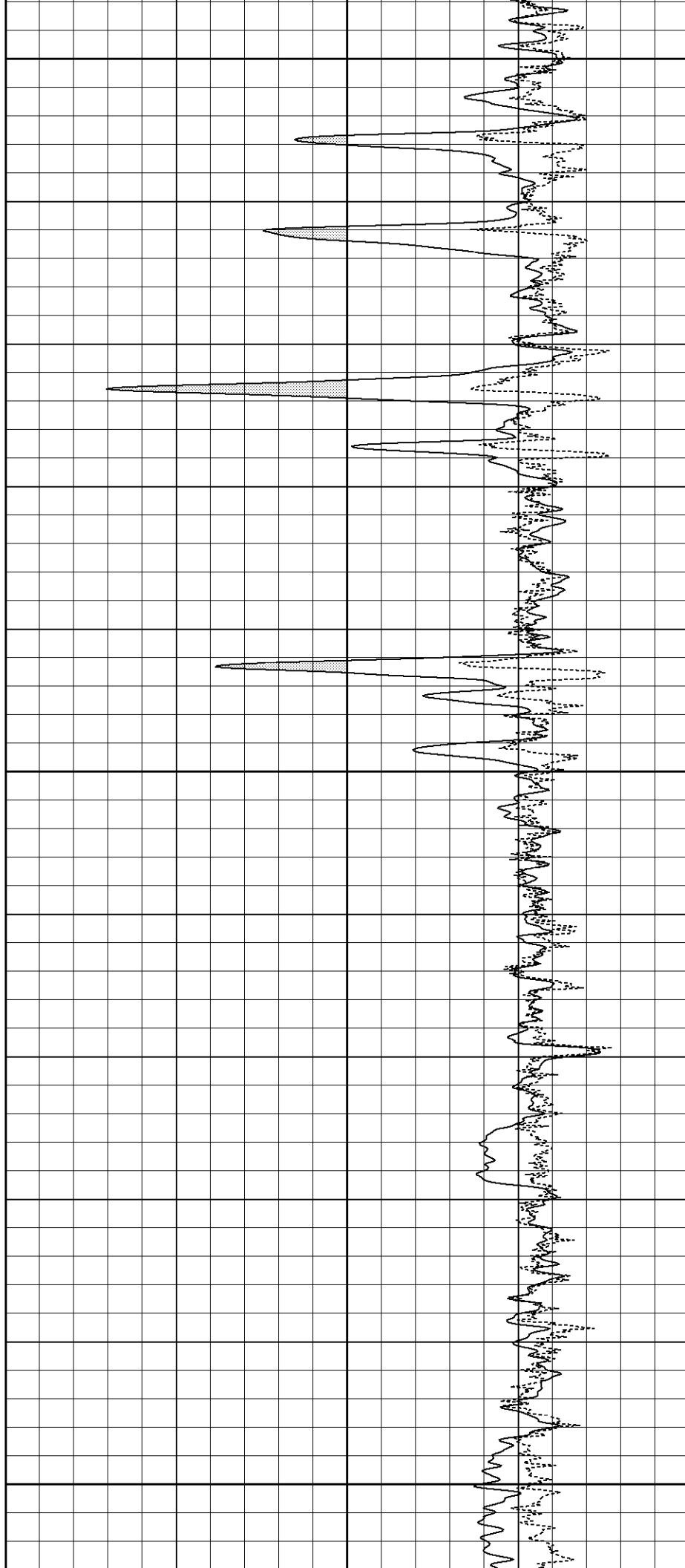


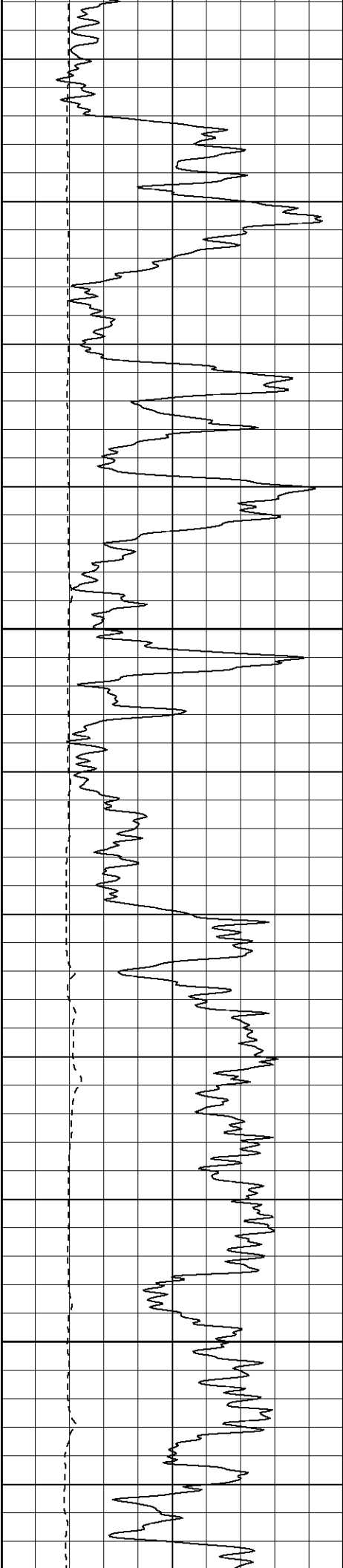


1800

1850

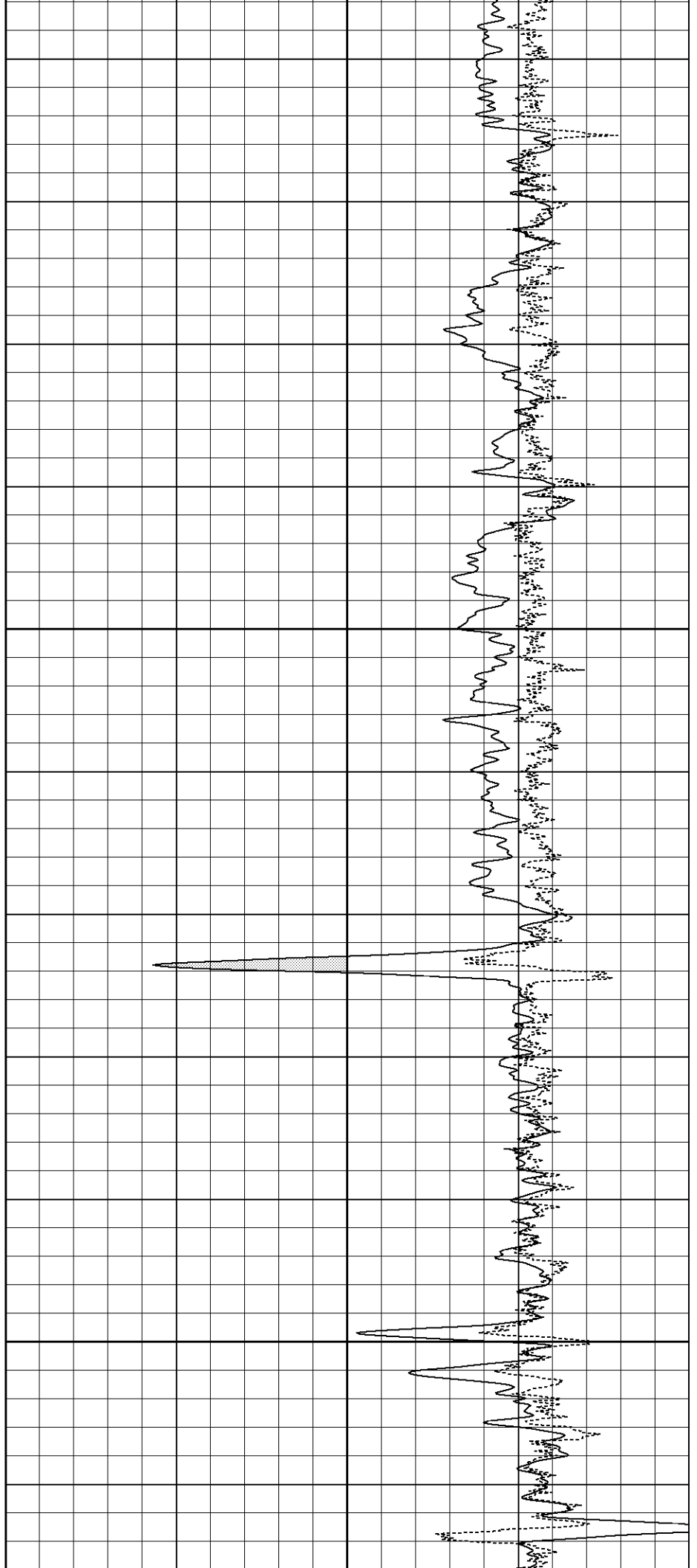
1900

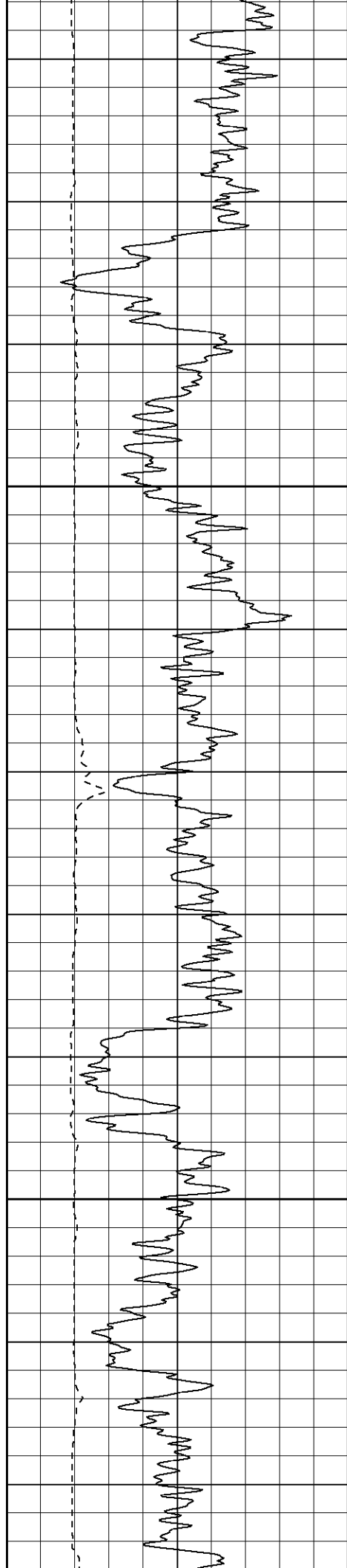




1950

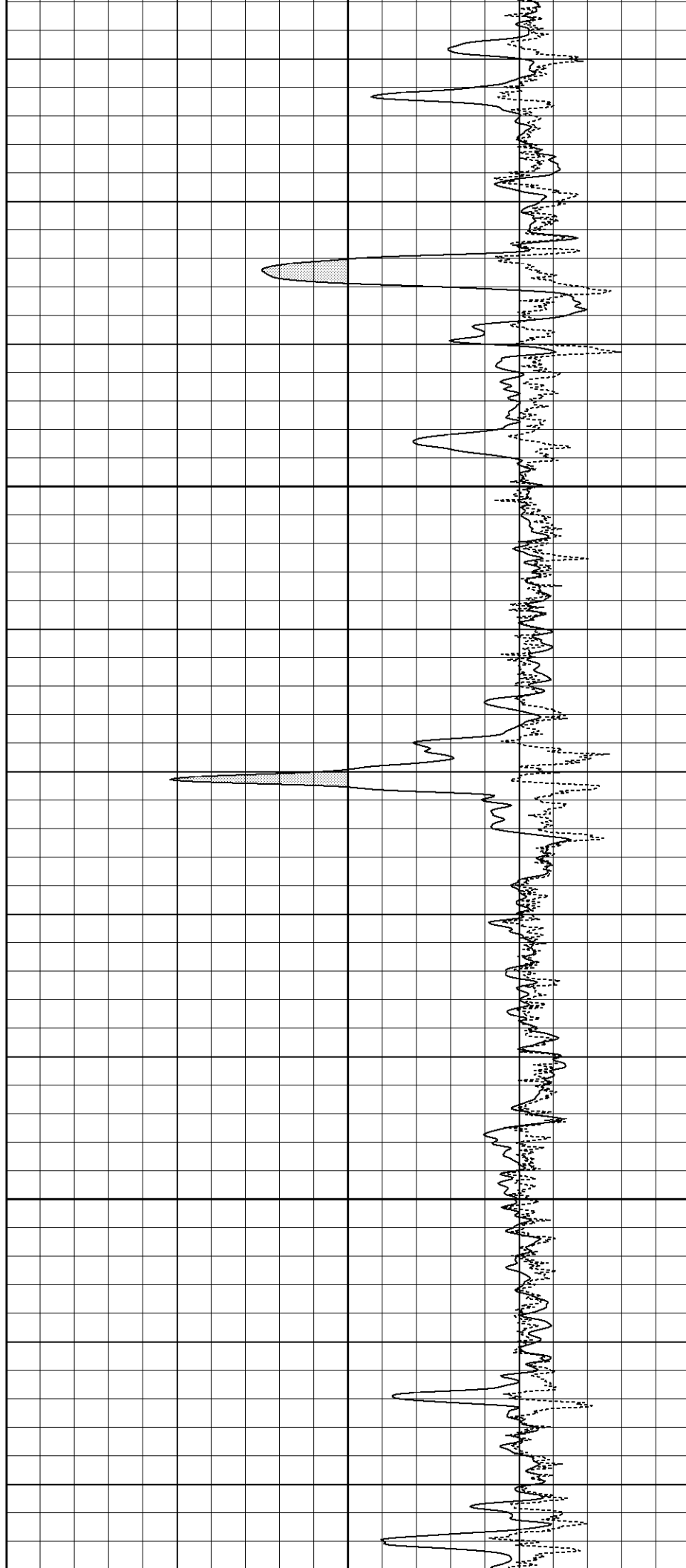
2000



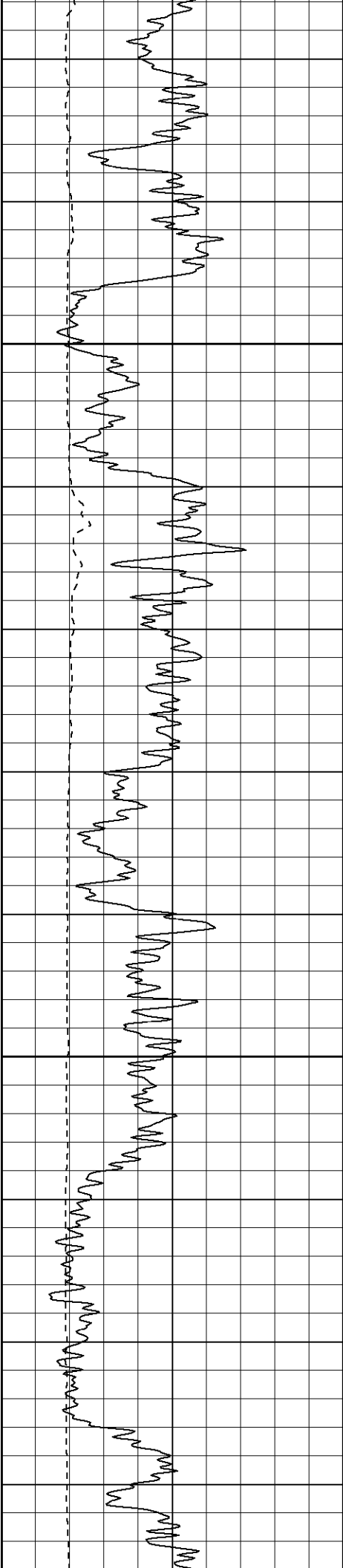


2050

2100

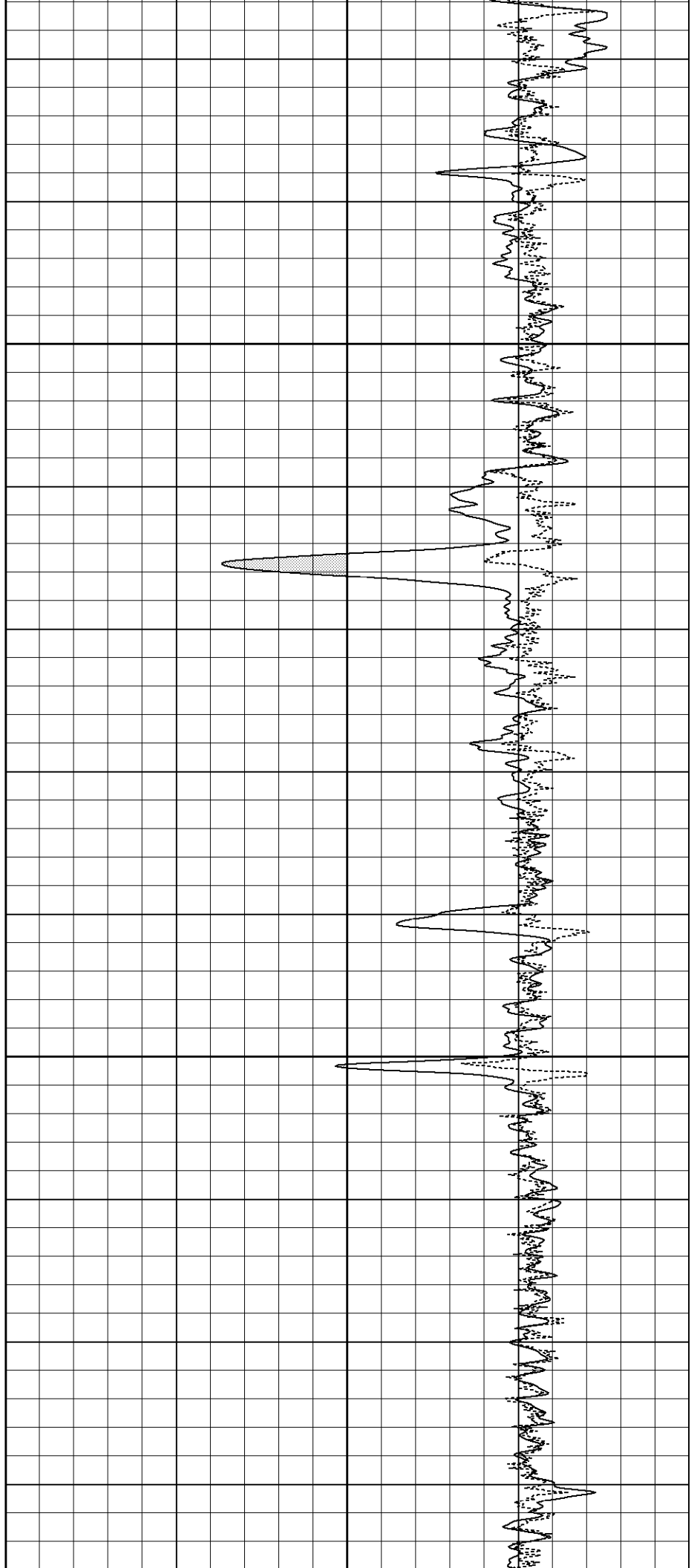


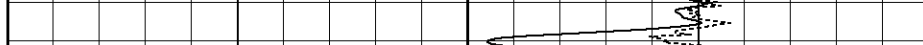
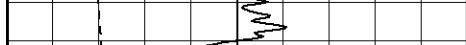


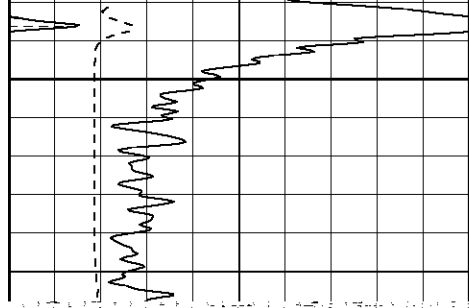


2150

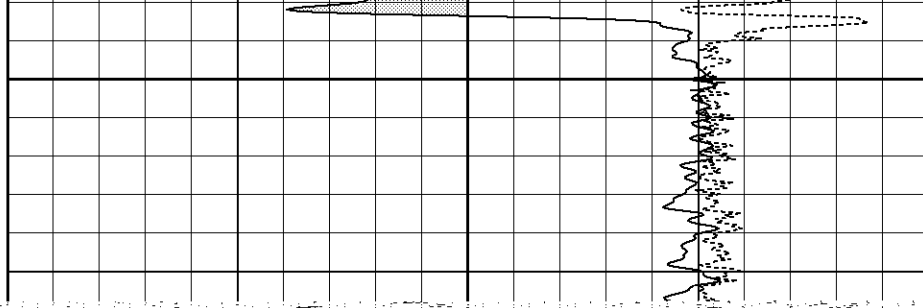
2200

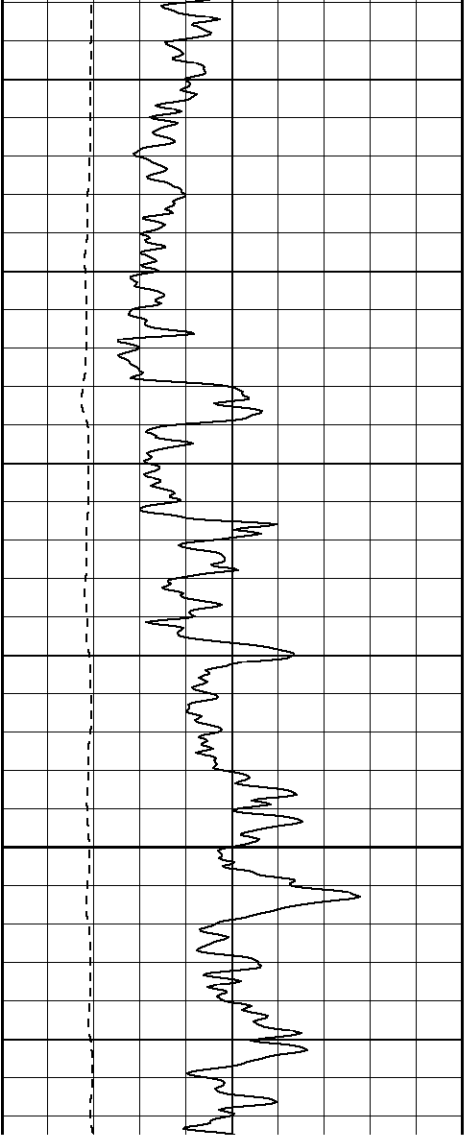




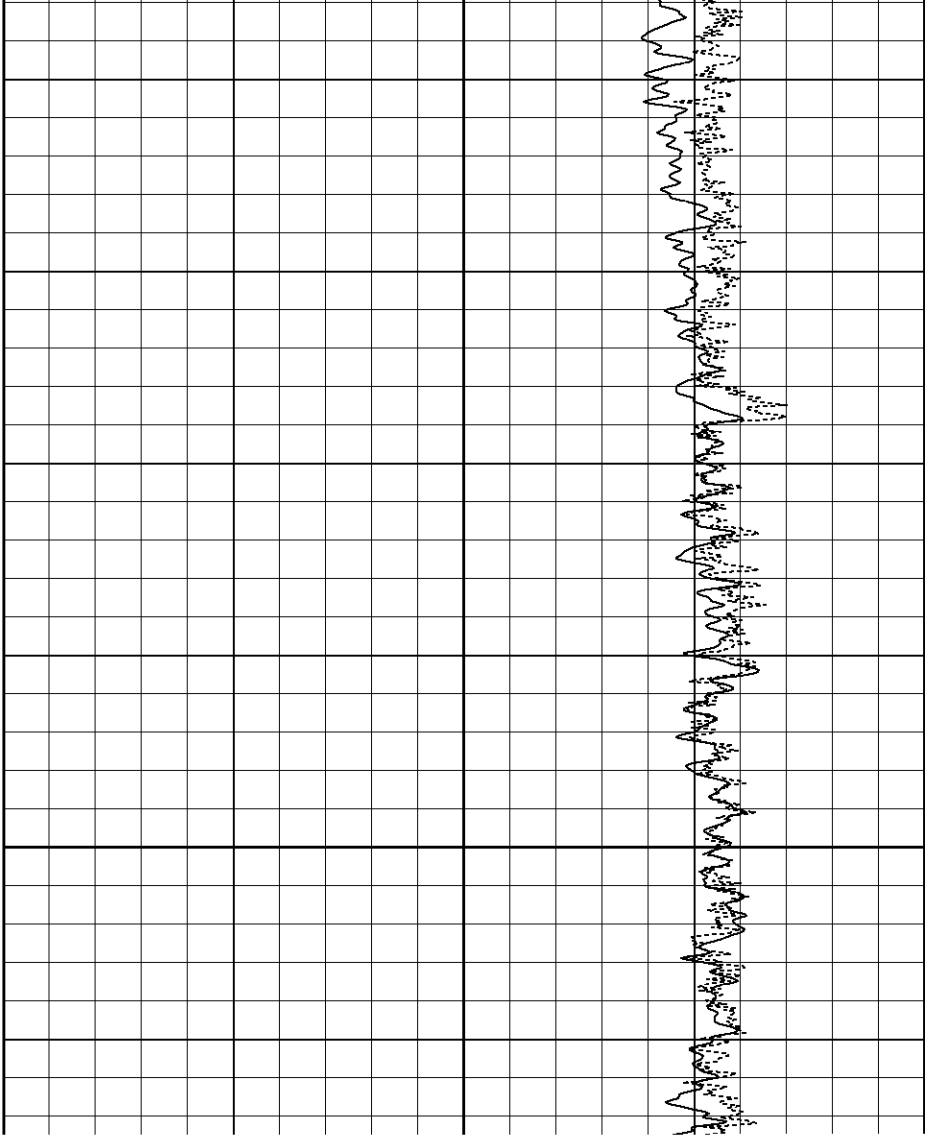


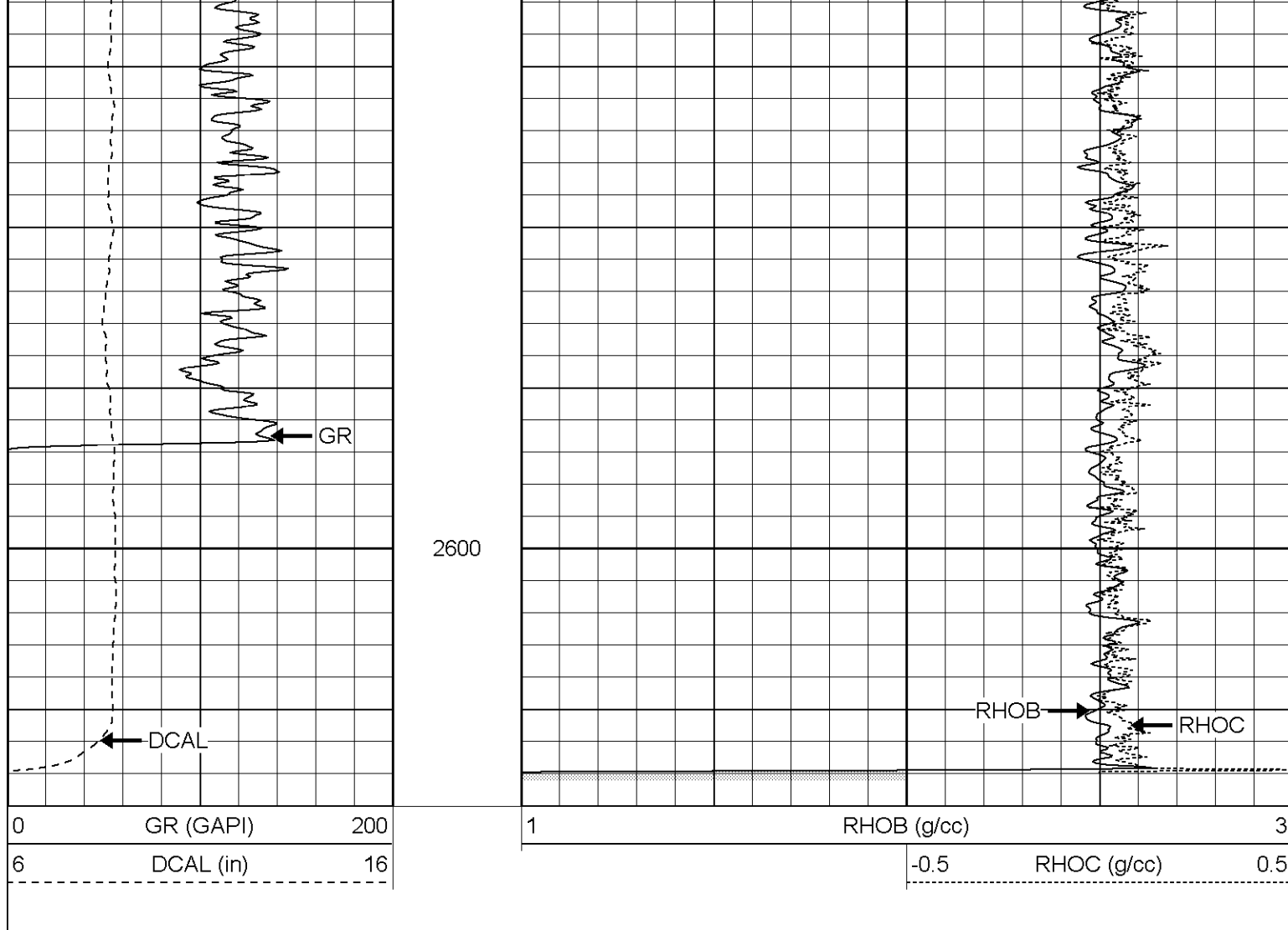
2350





2500





### Compensated Density Calibration Report

Serial-Model:	2119-O
Source / Verifier:	csv-j12 / blks
Master Calibration Performed:	Fri Jul 07 08:48:39 2006

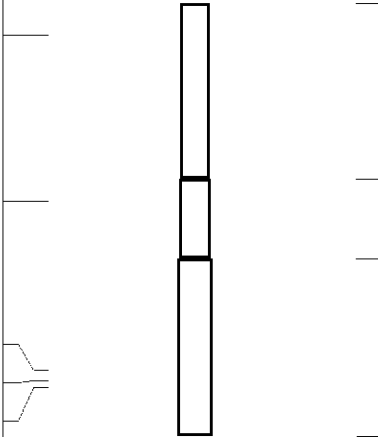
Master Calibration

Density

For Detector

Mass Detector

Calibrator Reading:	139.0	cps
Sensitivity:	0.6000	GAPI/cps
Neutron Calibration Report		
Serial Number:	5138	
Tool Model:	G	
Performed:	Tue Jun 27 08:34:07 2006	
Calibrator Value:	1	NAPI
Calibrator Reading:	1	cps
Sensitivity:	1	NAPI/cps

Sensor	Offset (ft)	Schematic	Description	Len (ft)	OD (in)	Wt (lb)
NEU	13.07		NEU-G (5138) Gearhart Epithermal	5.75	3.50	85.00
GR	7.64		GR-O (2119) Oilex	2.60	3.63	74.00
LSD	2.13		CDL-O (2119) Oilex	5.77	4.00	201.00
DCAL	1.79					
SSD	1.58					
Dataset:			/field/well/run1/_plots/_jobs_/dup			
Total Length:			14.12 ft			
Total Weight:			360.00 lb			
O.D.			4.00 in			