

Patterson

**DUAL
INDUCTION
LOG**

Company XTO Energy, Inc.		Company XTO Energy, Inc.	
Well Apache Canyon 06-08		Well Apache Canyon 06-08	
Field Purgatoire River		Field Purgatoire River	
County Las Animas		County Las Animas	
State CO		State CO	
Location: API # : 05 071 08790 00		Other Services CDL NEUTRON	
SEC 06 TWP 34S RGE 67W 1751' FNL & 988' FEL		Elevation	
Permanent Datum	Ground Level	Elevation	8033'
Log Measured From	Ground Level		
Drilling Measured From	Ground Level		
Date	7-19-06	7-20-06	
Run Number	One	Two	
Depth Driller	2610'	2610'	
Depth Logger	2039'	2610'	
Bottom Logged Interval	No Log Ran	2608'	
Top Log Interval	No Log Ran	Surface Casing	
Casing Driller	8 5/8" @ 622'	8 5/8" @ 622'	
Casing Logger	No Log Ran	622'	
Bit Size	7 7/8"	7 7/8"	
Type Fluid in Hole	Water	Water	
Density / Viscosity	///	///	
pH / Fluid Loss	///	///	
Source of Sample	///	///	
Rm @ Meas. Temp	///	///	
Rmf @ Meas. Temp	///	///	
Rmc @ Meas. Temp	///	///	
Source of Rmf / Rmc	///	///	
Rm @ BHT	///	///	
Time Circulation Stopped	2:30 A.M.	11:30 P.M. 7-19-06	
Time Logger on Bottom	11:30 A.M.	2:45 A.M.	
Maximum Recorded Temperature	No Log Ran	111 DEG F	
Equipment Number	T720	T720	
Location	Trinidad	Trinidad	
Recorded By	M. Norton	M. Norton	
Witnessed By	Mr. Don Johnson	Mr. Don Johnson	

<<< Fold Here >>>

All interpretations are opinions based on inferences from electrical or other measurements and we cannot and do not guarantee the accuracy or correctness of any interpretation, and we shall not, except in the case of gross or willful negligence on our part, be liable or responsible for any loss, costs, damages, or expenses incurred or sustained by anyone resulting from any interpretation made by any of our officers, agents or employees. These interpretations are also subject to our general terms and conditions set out in our current Price Schedule.

Comments

Well Directions:
First Bosque entrance, right on Cherry Canyon, at first Y stay left, thru two gates, stay on main road at top of hill at T stay left, after drive thru location second left to location.

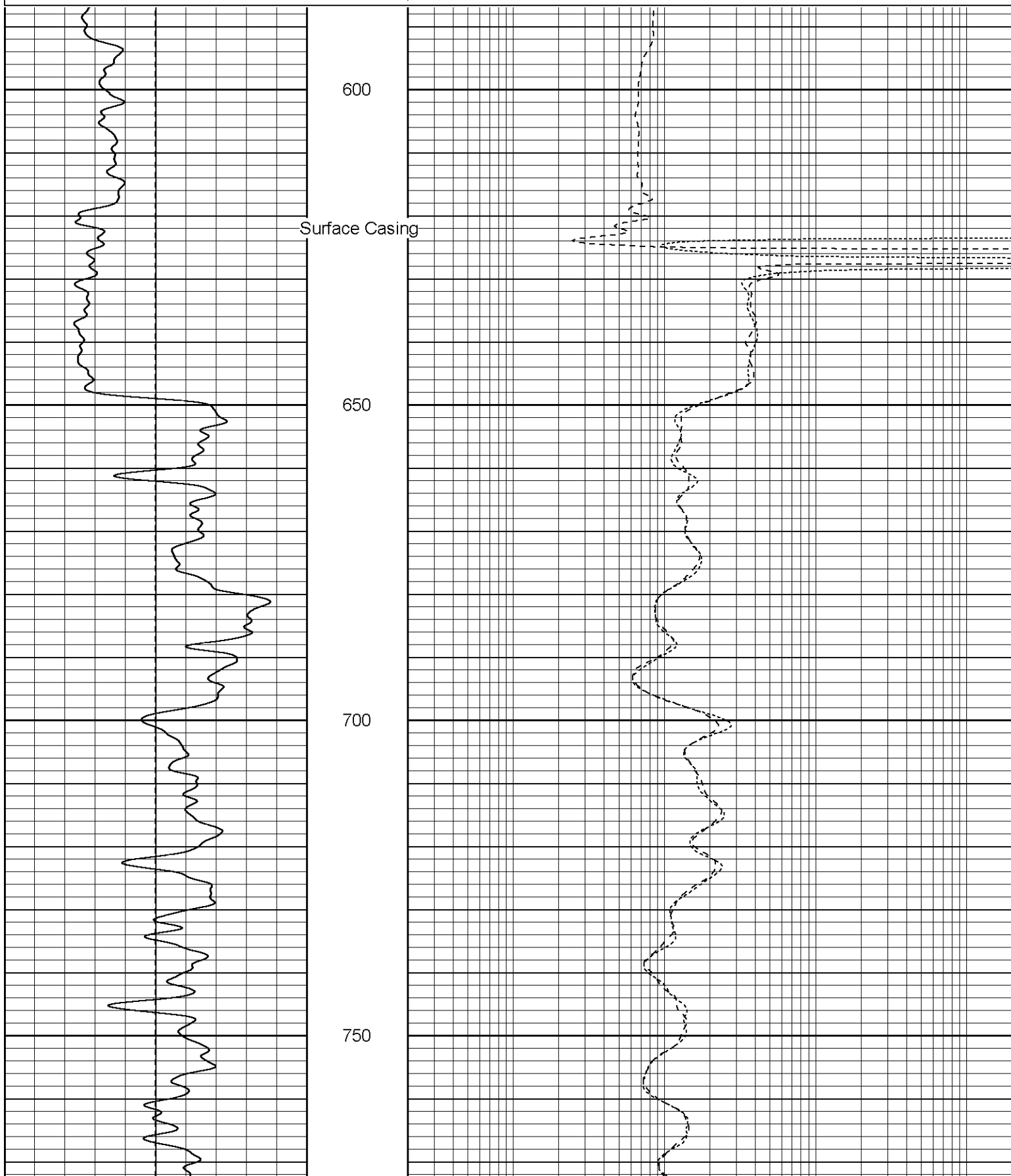
Patterson

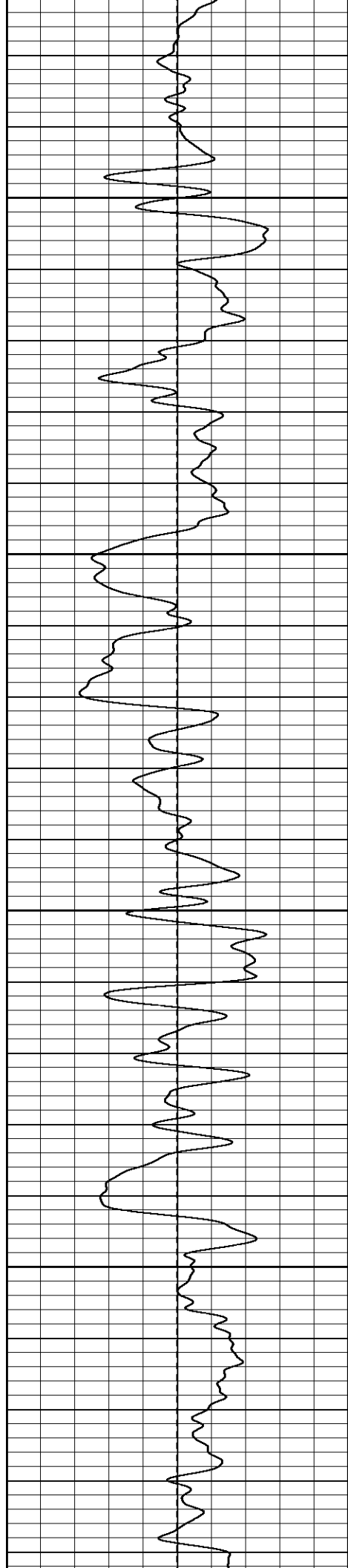
Main Pass

Database File: xtoac0608.db
Dataset Pathname: pass2.1
Presentation Format: dil
Dataset Creation: Thu Jul 20 05:15:14 2006 by Calc Warrior 7.0 STD Ope
Charted by: Depth in Feet scaled 1:240

0	GR (GAPI)	200
-100	SP (mV)	100

0.2	RILM (Ohm-m)	2000
0.2	RILD (Ohm-m)	2000
0.2	RLL3 (Ohm-m)	2000



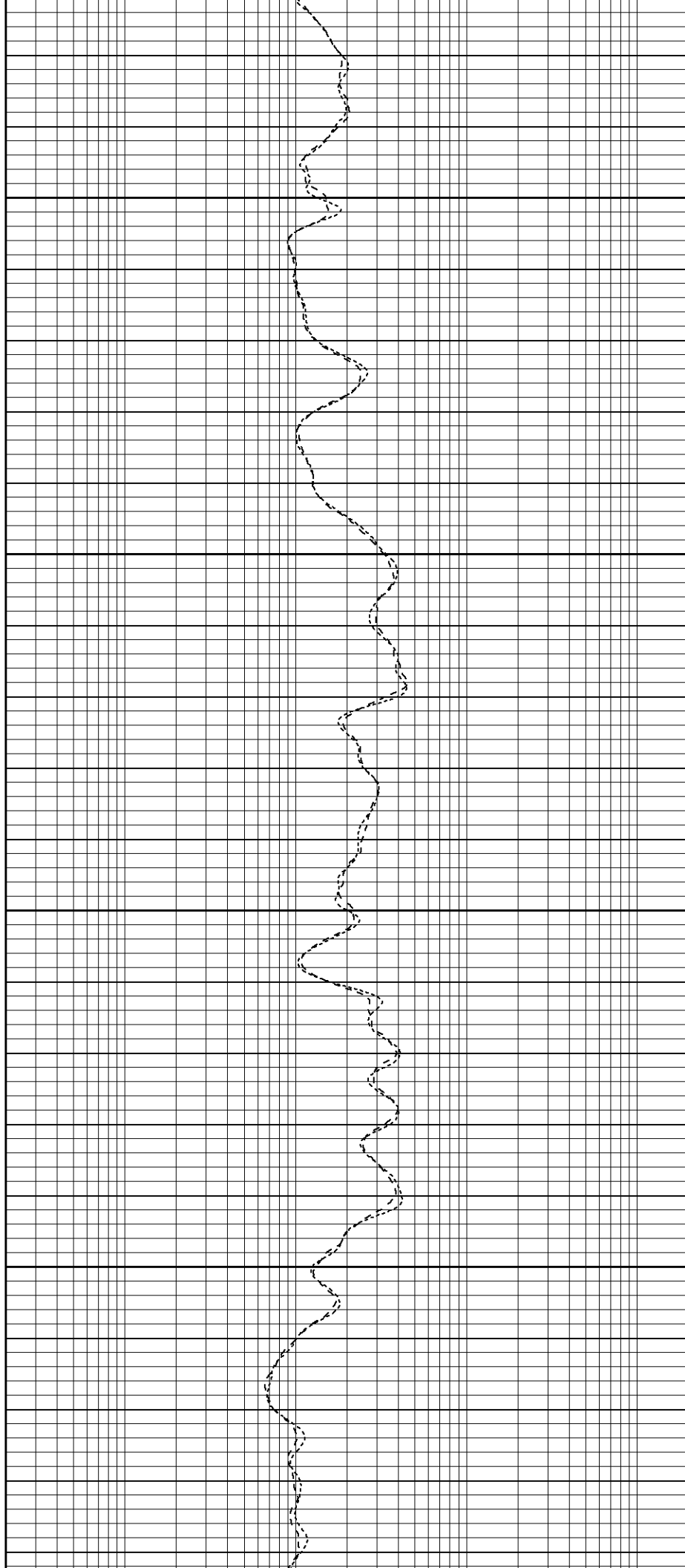


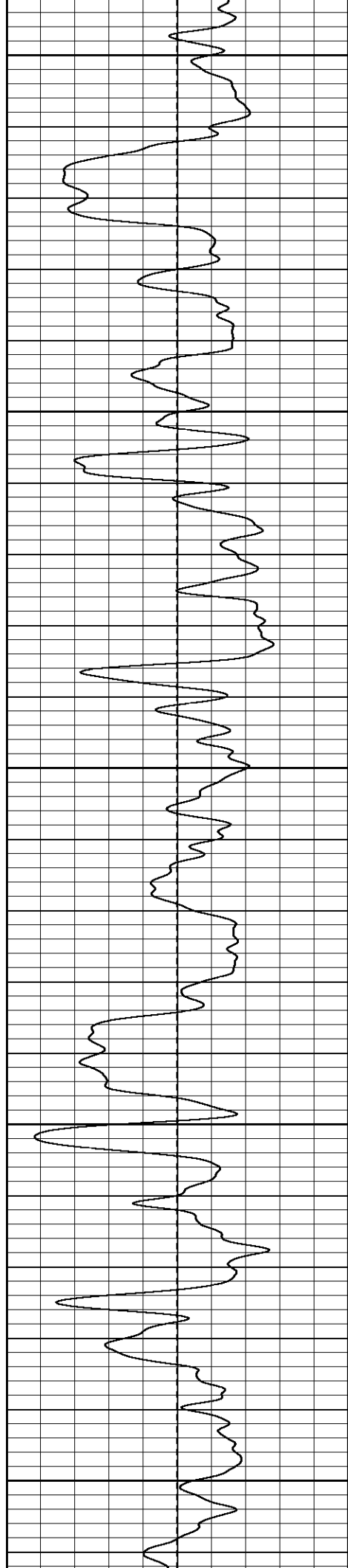
800

850

900

950





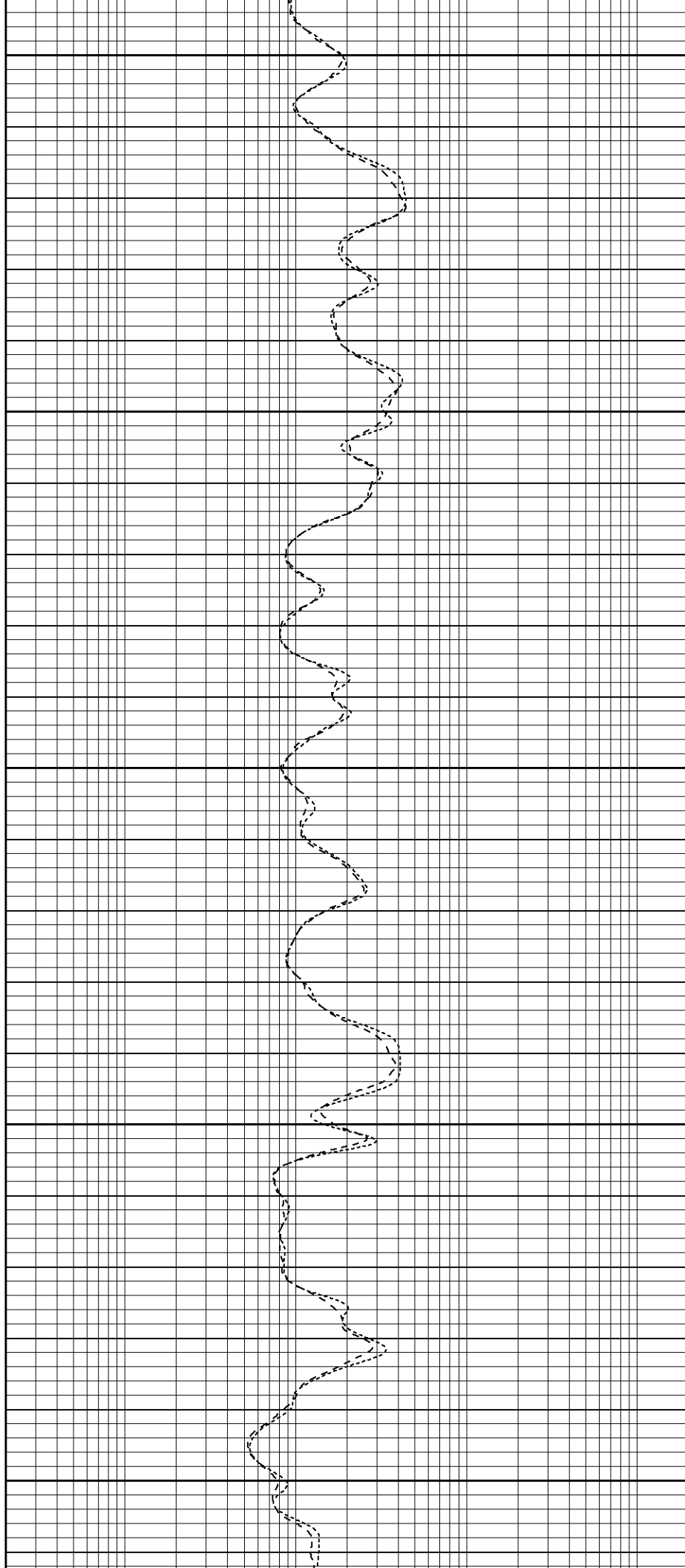
1000

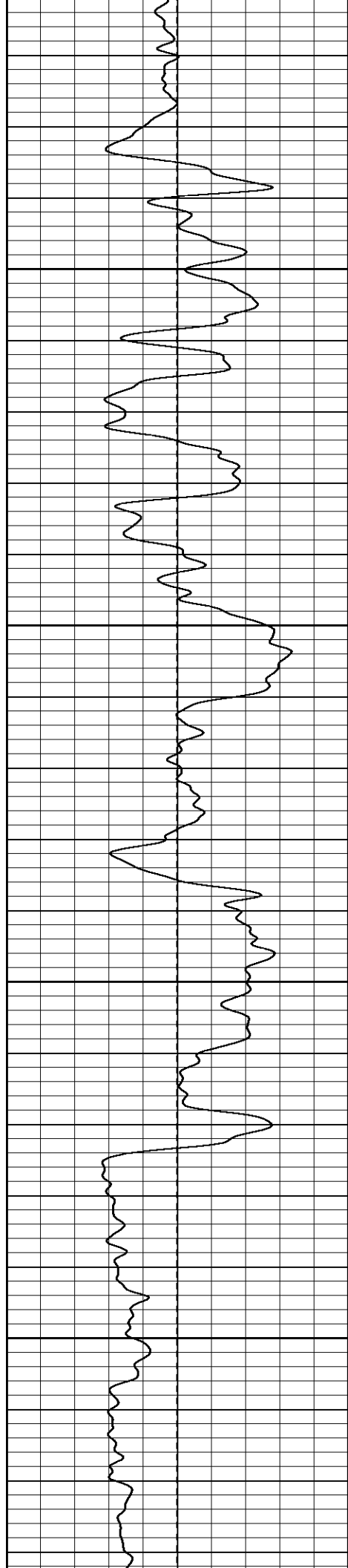
1050

1100

1150

1200



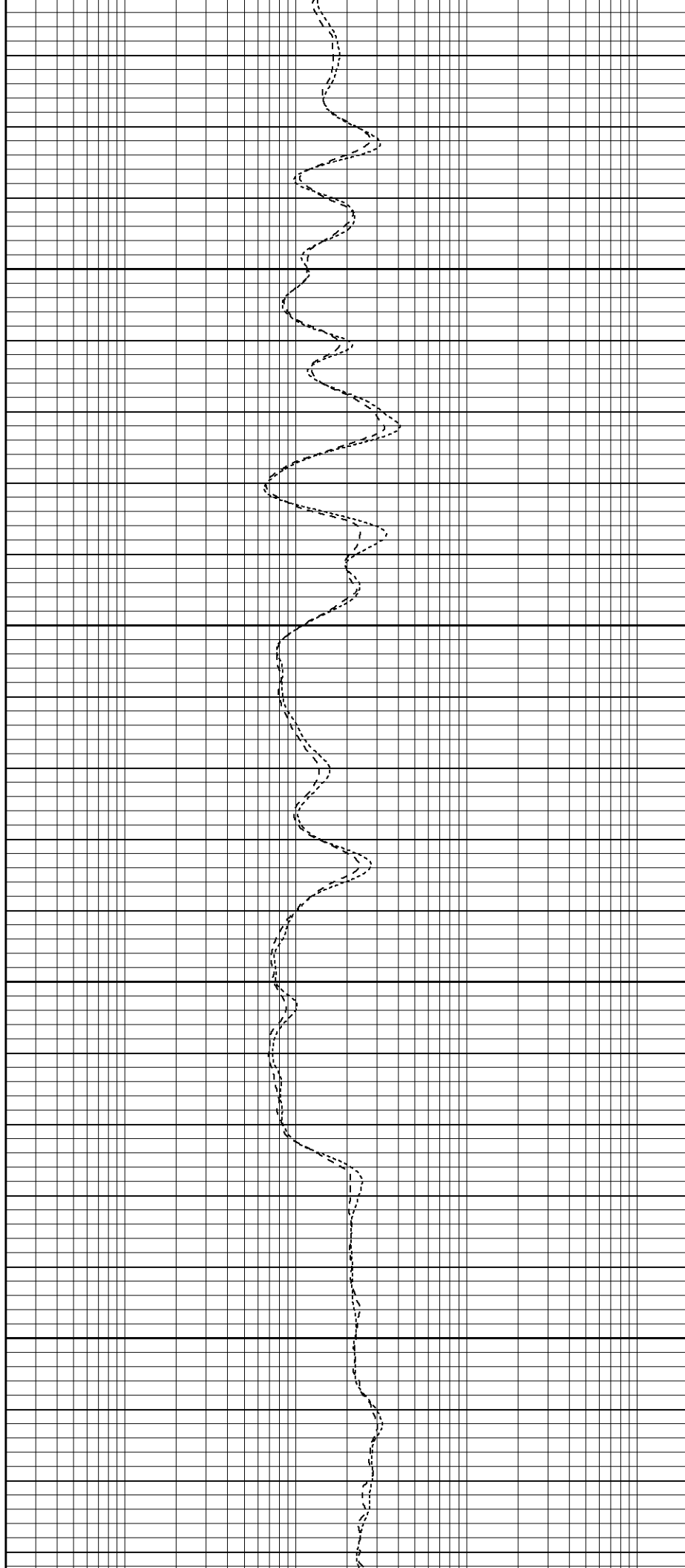


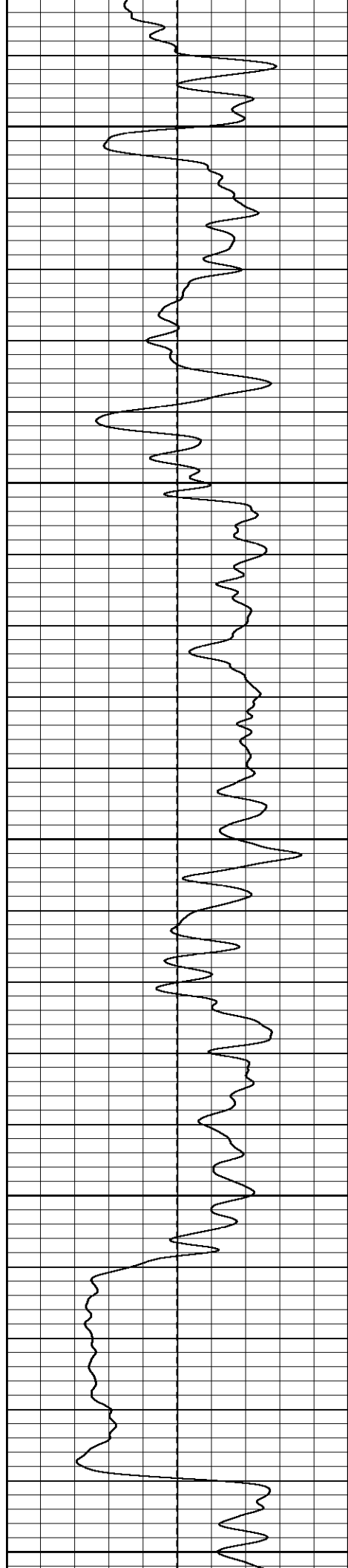
1250

1300

1350

1400





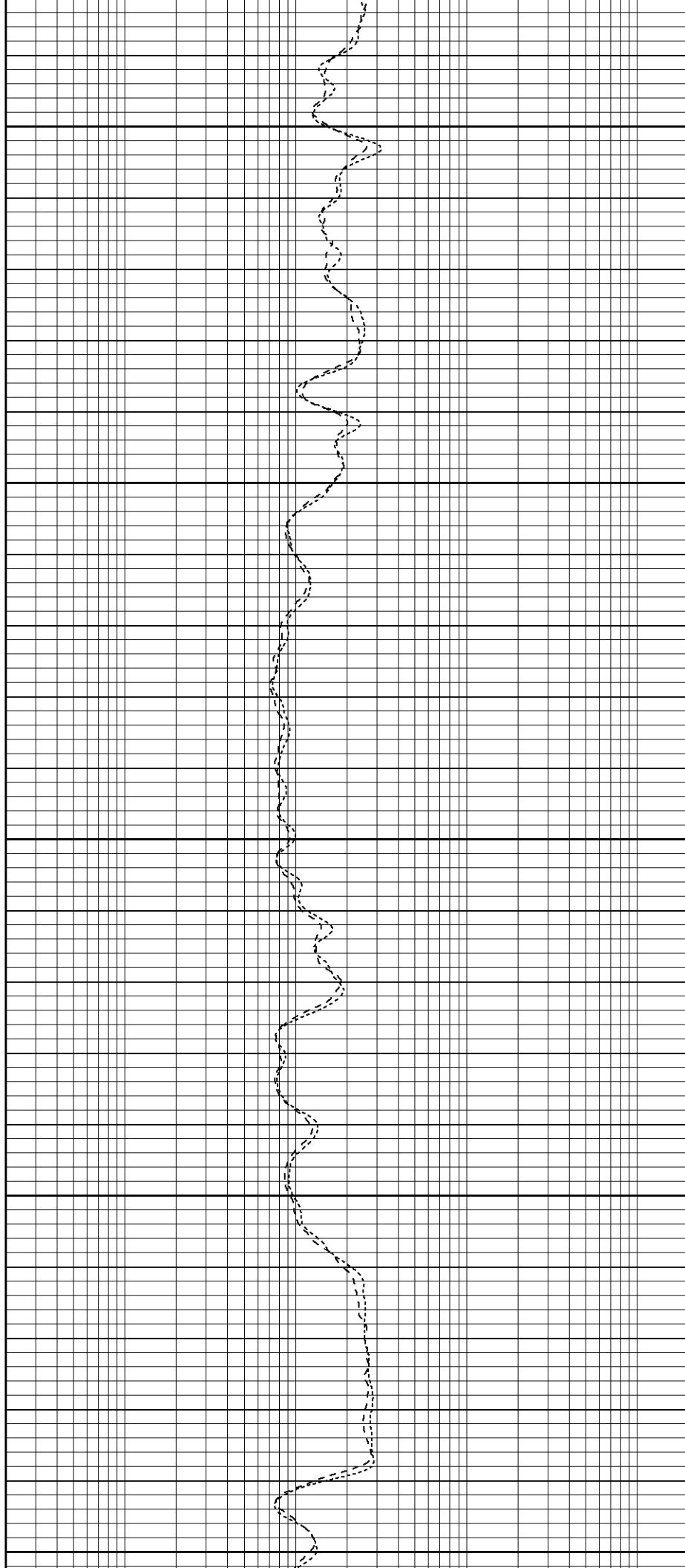
1450

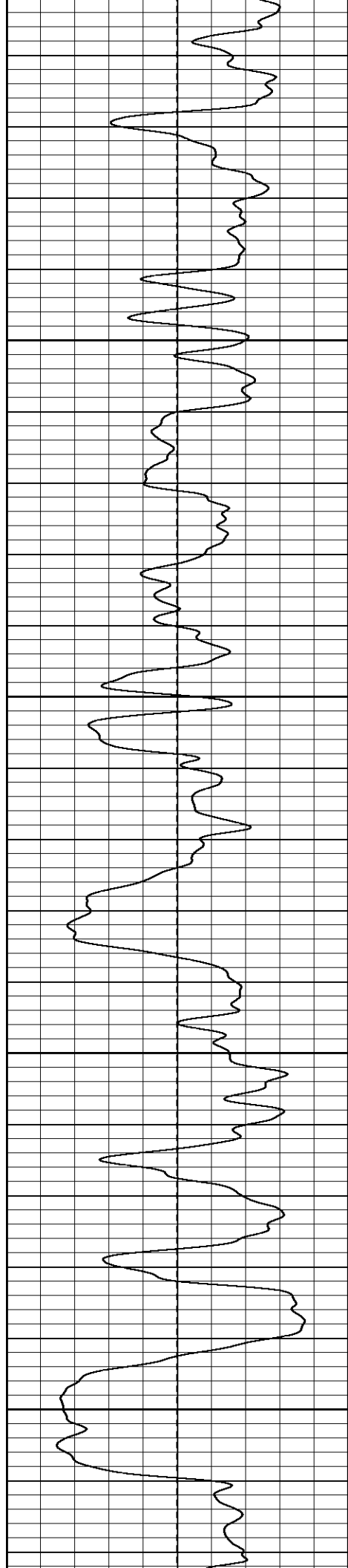
1500

1550

1600

1650



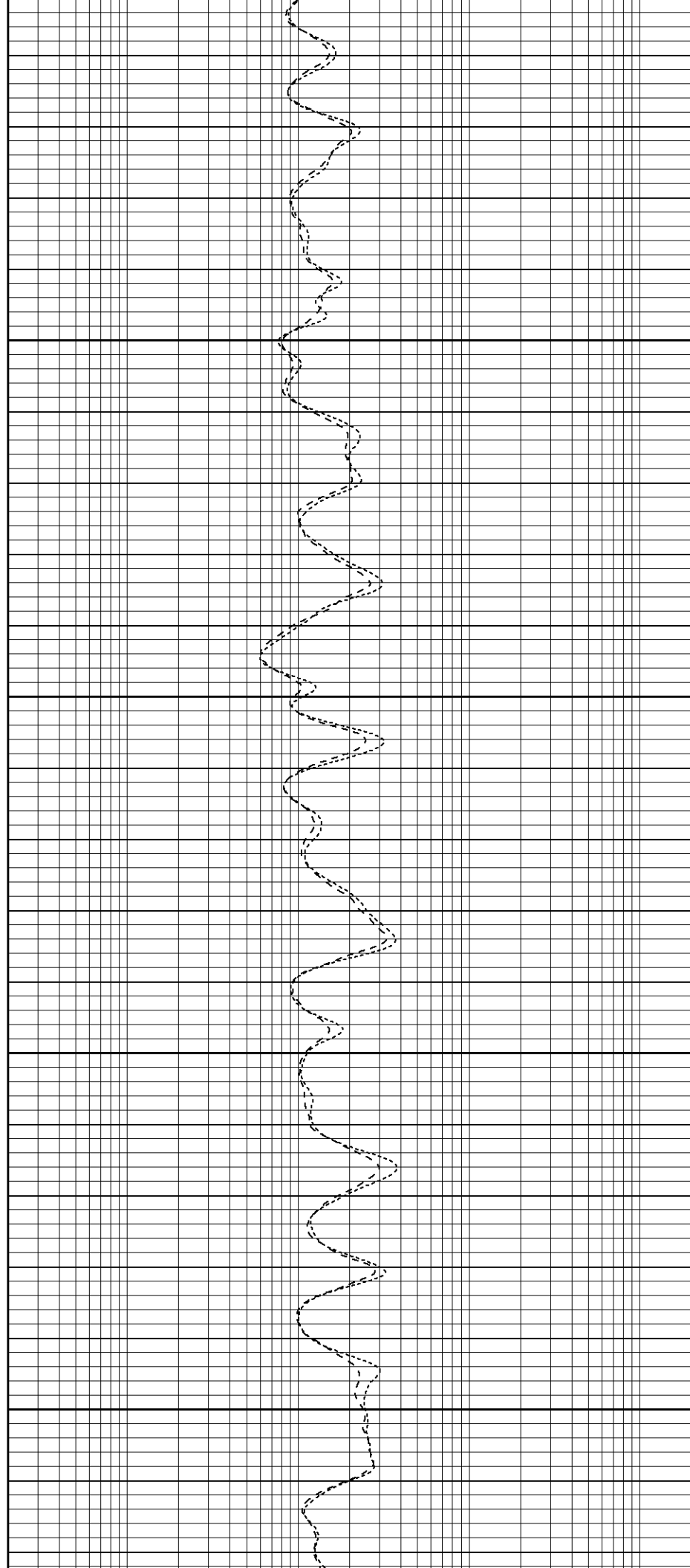


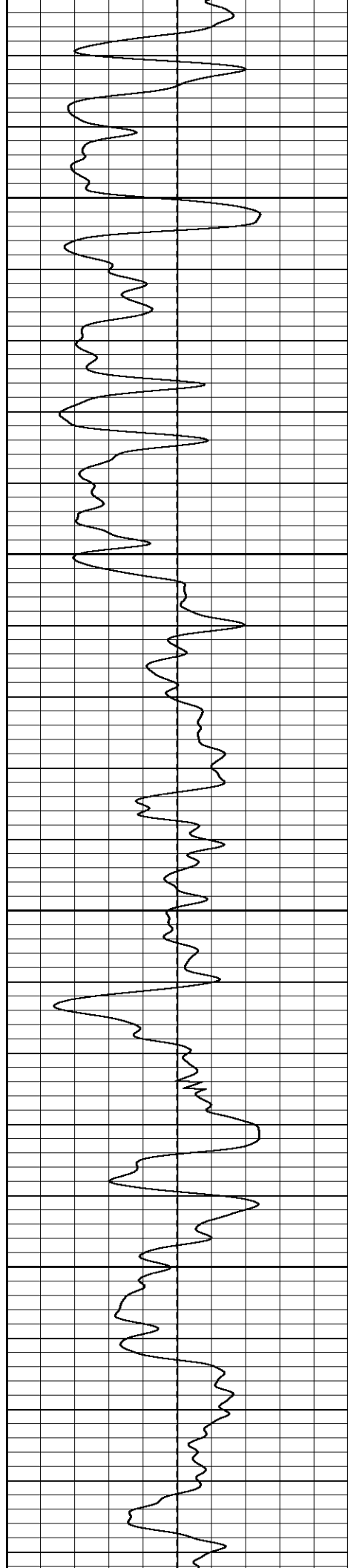
1700

1750

1800

1850



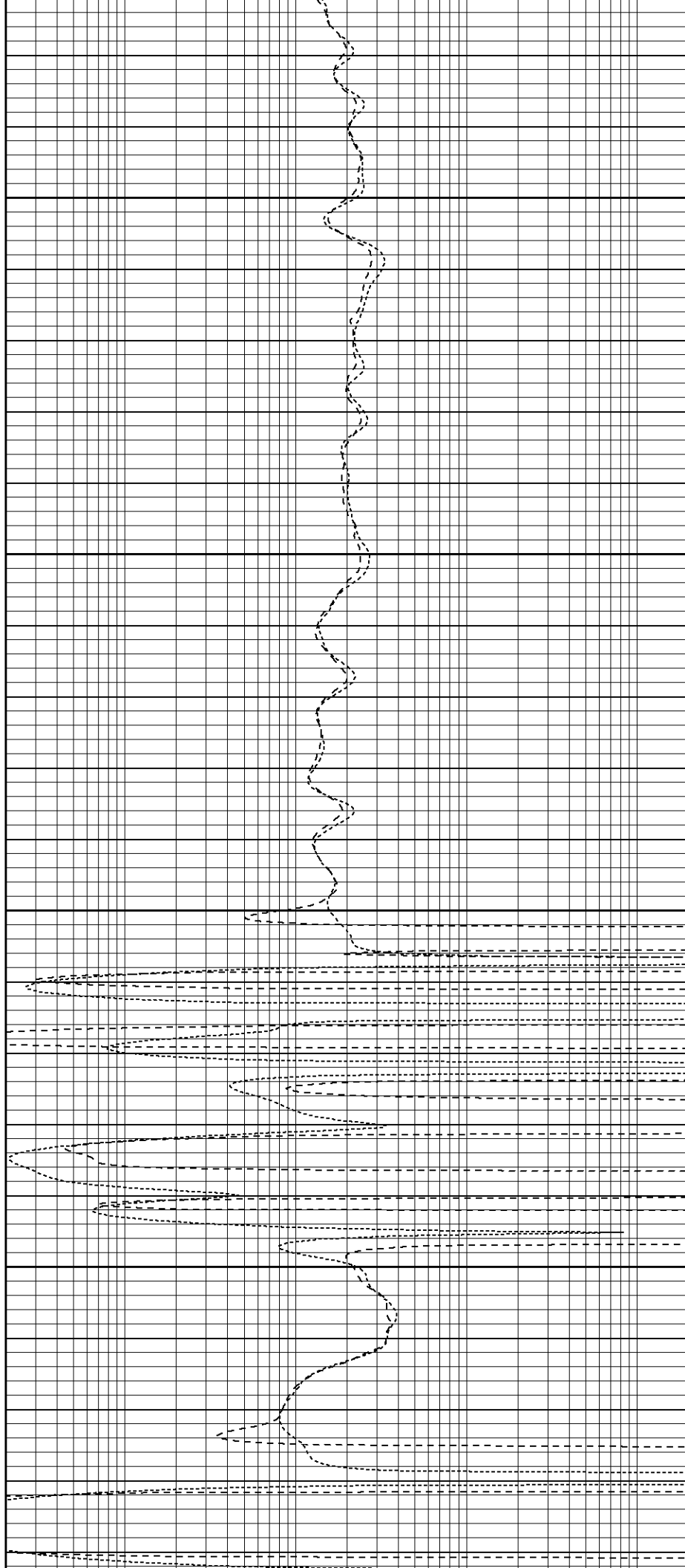


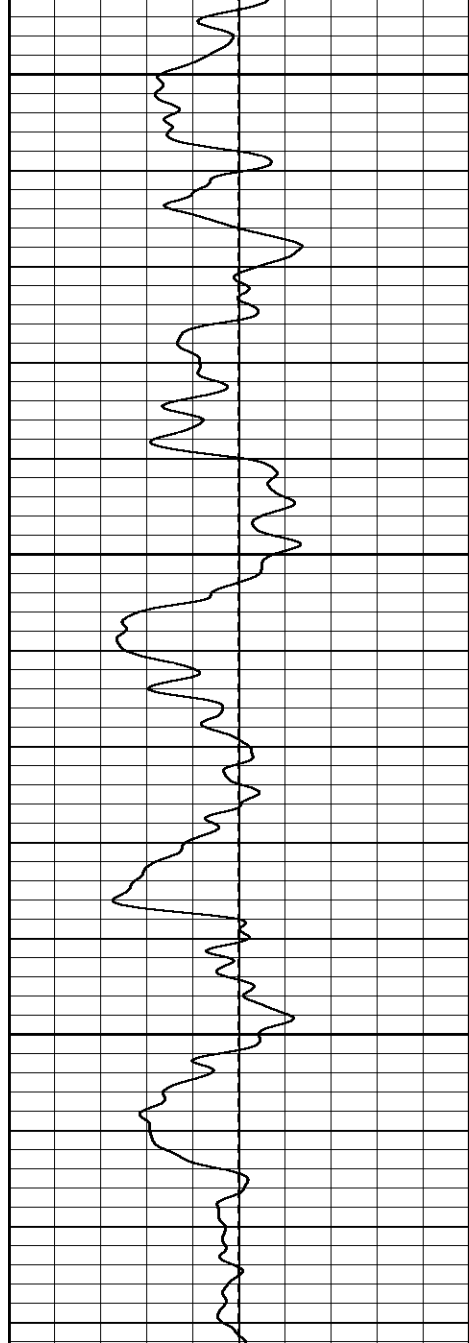
1900

1950

2000

2050

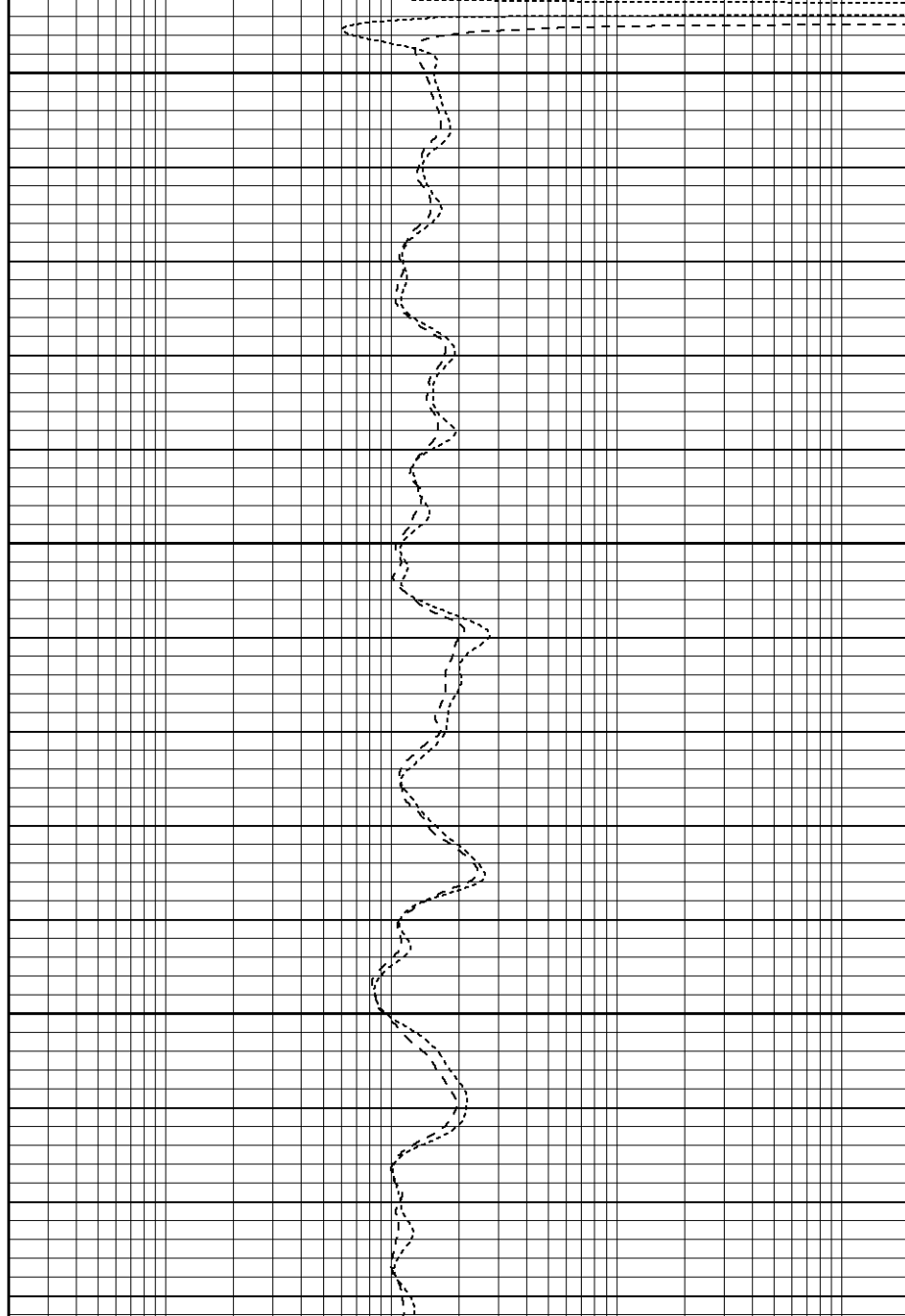


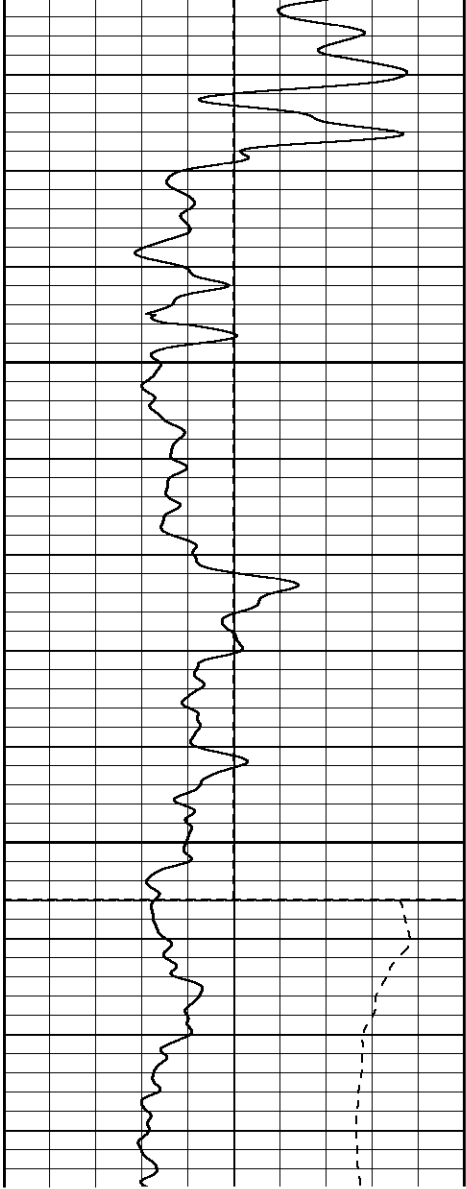


2100

2150

2200

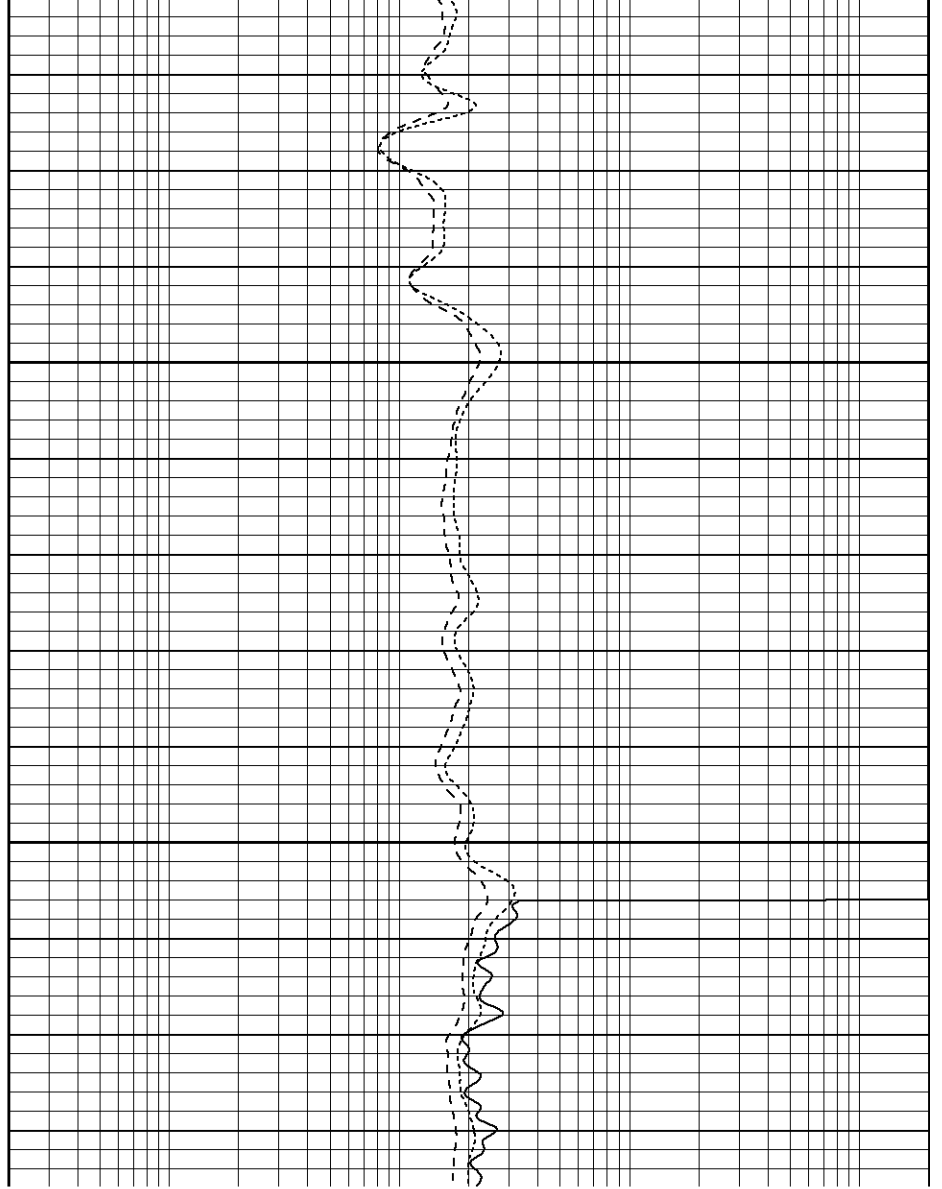


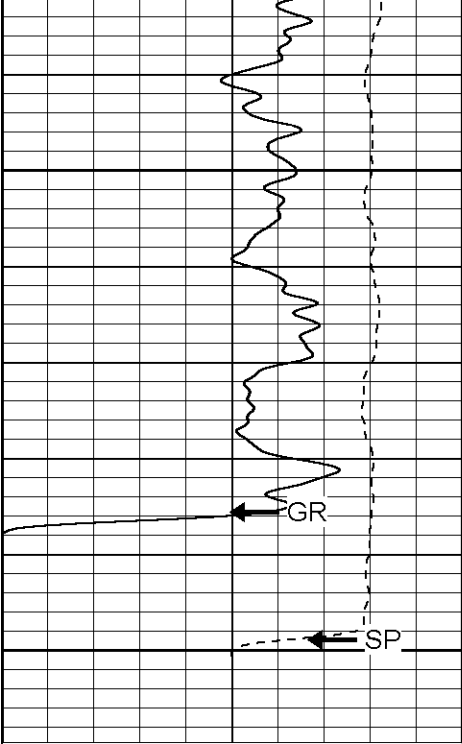


2350

2400

Fluid Level

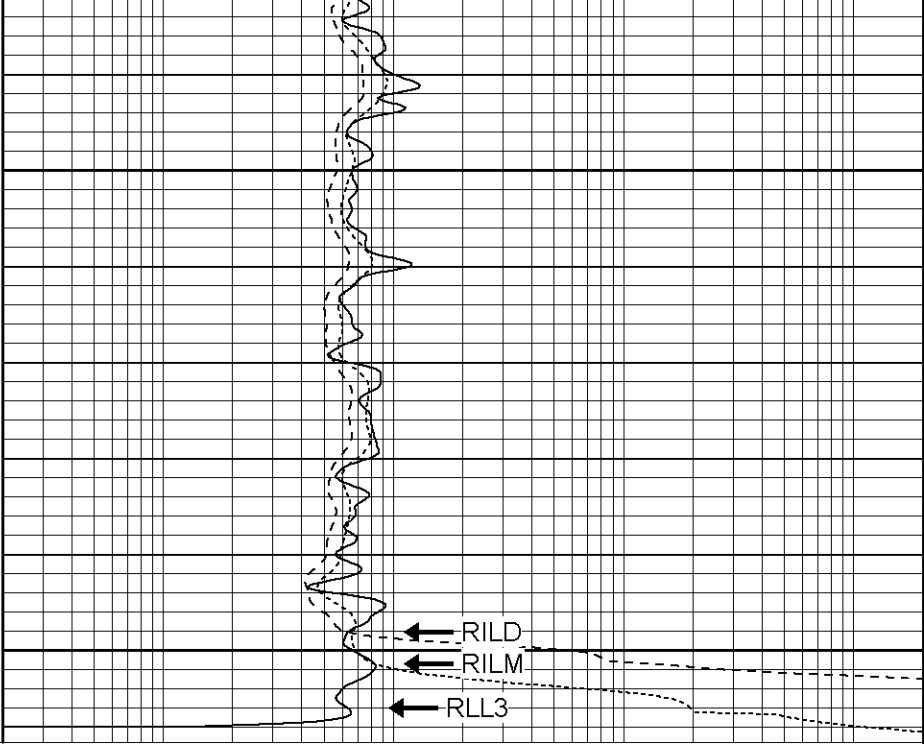




2550

2600

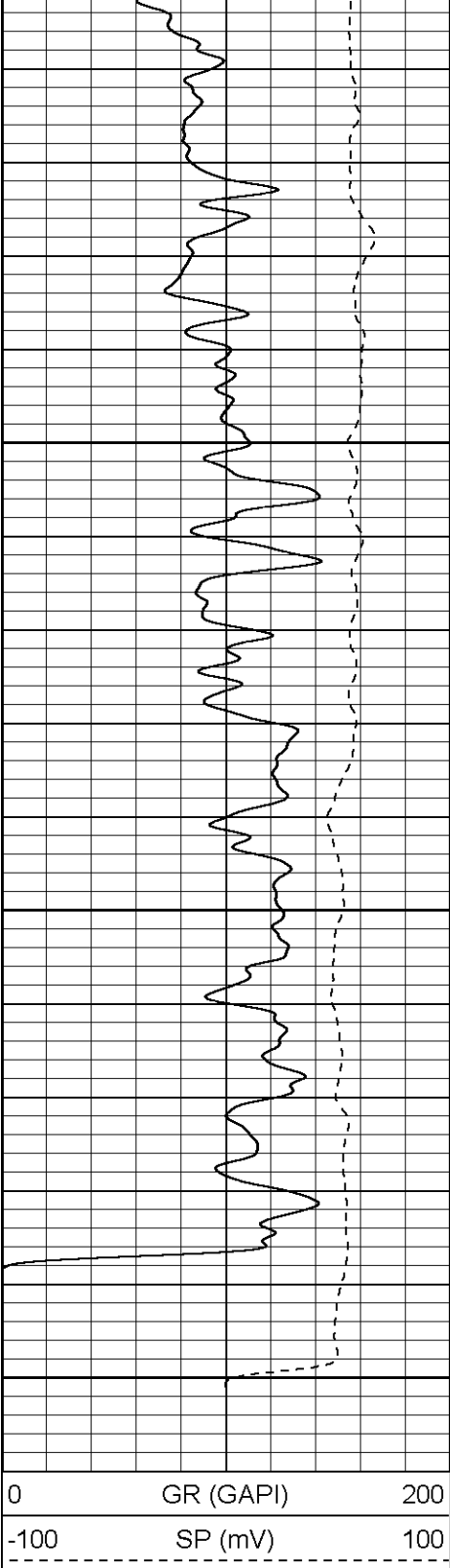
0 GR (GAPI) 200
-100 SP (mV) 100



0.2 RILM (Ohm-m) 2000
0.2 RILD (Ohm-m) 2000
0.2 RLL3 (Ohm-m) 2000

0.2

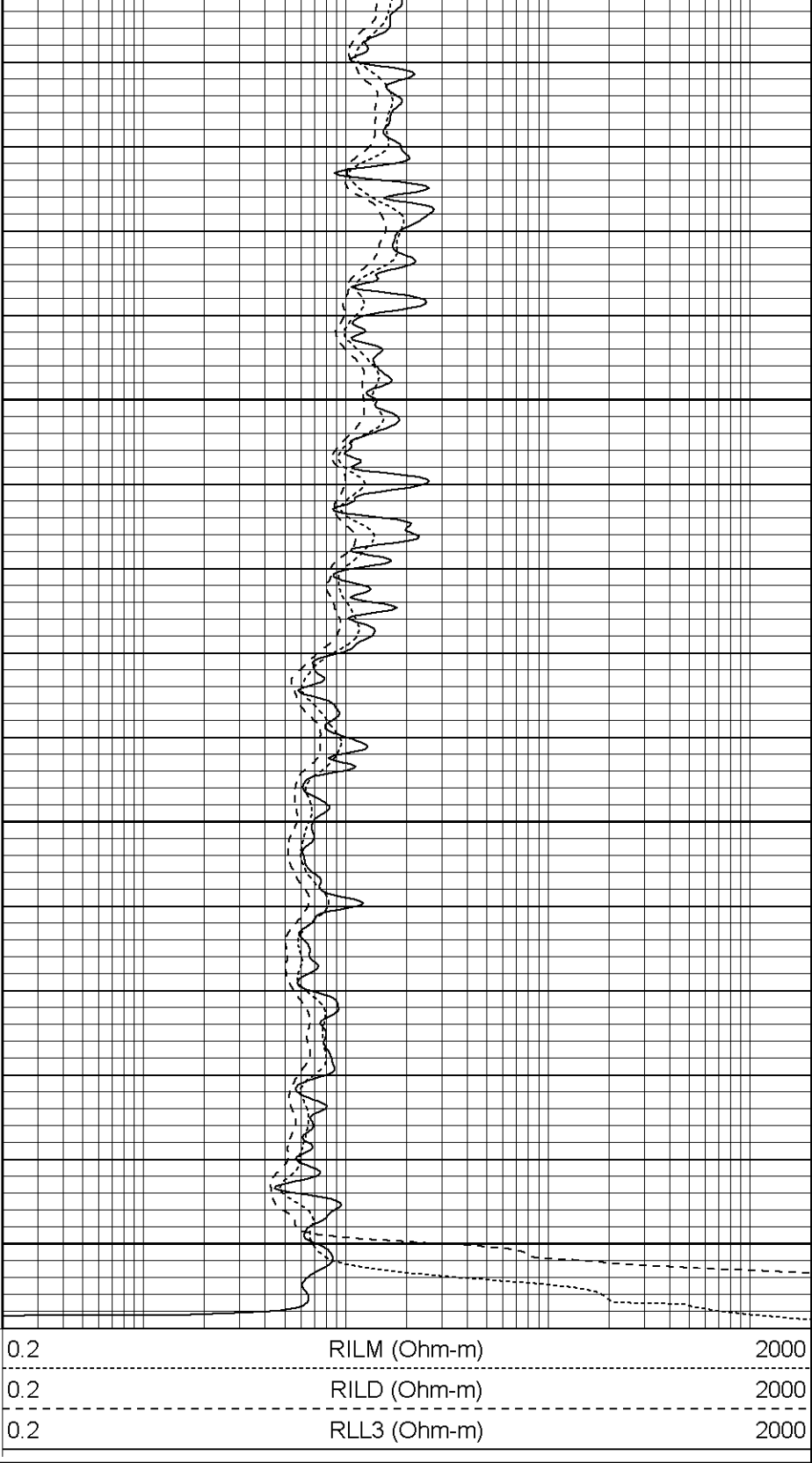
0.2



2500

2550

2600



Dual Induction Calibration Report

Serial-Model:	5375-G
Surface Cal Performed:	Mon Jun 19 08:21:38 2006
Downhole Cal Performed:	Wed Jul 12 14:42:49 2006



Surface Calibration

Readings		References		Results	
Loop:	Air	Loop	Air	Loop	m

Deep	0.012	0.632	V	0.000	500.000	mmho-m	806.768	-9.661
Medium	0.016	0.753	V	0.000	550.000	mmho-m	746.164	-12.032
Internal:	Zero	Cal		Zero	Cal		m	b
Deep	0.014	0.631	V	0.000	500.000	mmho-m	809.790	-11.230
Medium	0.017	0.753	V	0.000	550.000	mmho-m	746.752	-12.516

Downhole Calibration								
	Readings			References			Results	
Internal:	Zero	Cal		Zero	Cal		m	b
Deep	0.409	500.729	mmho-m	1.526	499.660	mmho-m	0.996	1.120
Medium	-0.000	552.341	mmho-m	0.474	550.041	mmho-m	0.995	0.474
Shallow	2.510	0.023	V	500.000	2.000	Ohm-m	140.000	-2.000

Gamma Ray Calibration Report								
Serial Number:			2001					
Tool Model:			OH					
Performed:			Tue Jul 04 08:55:06 2006					
Calibrator Value:			1.0	GAPI				
Background Reading:			0.0	cps				
Calibrator Reading:			1.0	cps				
Sensitivity:			0.2800	GAPI/cps				

Sensor	Offset (ft)	Schematic	Description	Len (ft)	OD (in)	Wt (lb)
CHD	25.08		None	0.75	1.50	5.00
GR	22.83		GR-OH (2001) PROBE	3.50	3.25	40.00