

Patterson

**CEMENT BOND
GAMMA RAY
LOG**

Company		XTO Energy, Inc.	
Well		Hill Ranch 35-15	
Field		Purgatoire River	
County		Las Animas	
State		CO	
Company		XTO Energy, Inc.	
Well		Hill Ranch 35-15	
Field		Purgatoire River	
County		Las Animas	
State		CO	
Location:		API # : 05 071 08794 00	
SEC 35 TWP 34S RGE 67W		778' FSL & 2586' FEL	
Permanent Datum		Ground Level	
Log Measured From		Ground Level	
Drilling Measured From		Ground Level	
Elevation		7960'	
K.B. -----		D.F. -----	
G.L. 7960'			
Date		9-21-06	
Run Number		One	
Depth Driller		2545'	
Depth Logger		2384'	
Bottom Logged Interval		2382'	
Top Log Interval		Surface	
Open Hole Size		7 7/8"	
Type Fluid		Water	
Density / Viscosity		///	
Max. Recorded Temp.		112F	
Estimated Cement Top		2204'	
Time Well Ready		Portable Mast	
Time Logger on Bottom		1:15PM	
Equipment Number		1875	
Location		Trinidad	
Recorded By		E. Ray	
Witnessed By			
Run Number		Borehole Record	
Bit		From	
To		Size	
Weight		From	
To		Tubing Record	
Casing Record		Size	
Surface String		8 5/8"	
Prot. String		Wgt/Ft	
Production String		Top	
Liner		Bottom	
5 1/2"		00	
		410'	
		N/A	

<<< Fold Here >>>

All interpretations are opinions based on inferences from electrical or other measurements and we cannot and do not guarantee the accuracy or correctness of any interpretation, and we shall not, except in the case of gross or willful negligence on our part, be liable or responsible for any loss, costs, damages, or expenses incurred or sustained by anyone resulting from any interpretation made by any of our officers, agents or employees. These interpretations are also subject to our general terms and conditions set out in our current Price Schedule.

Comments

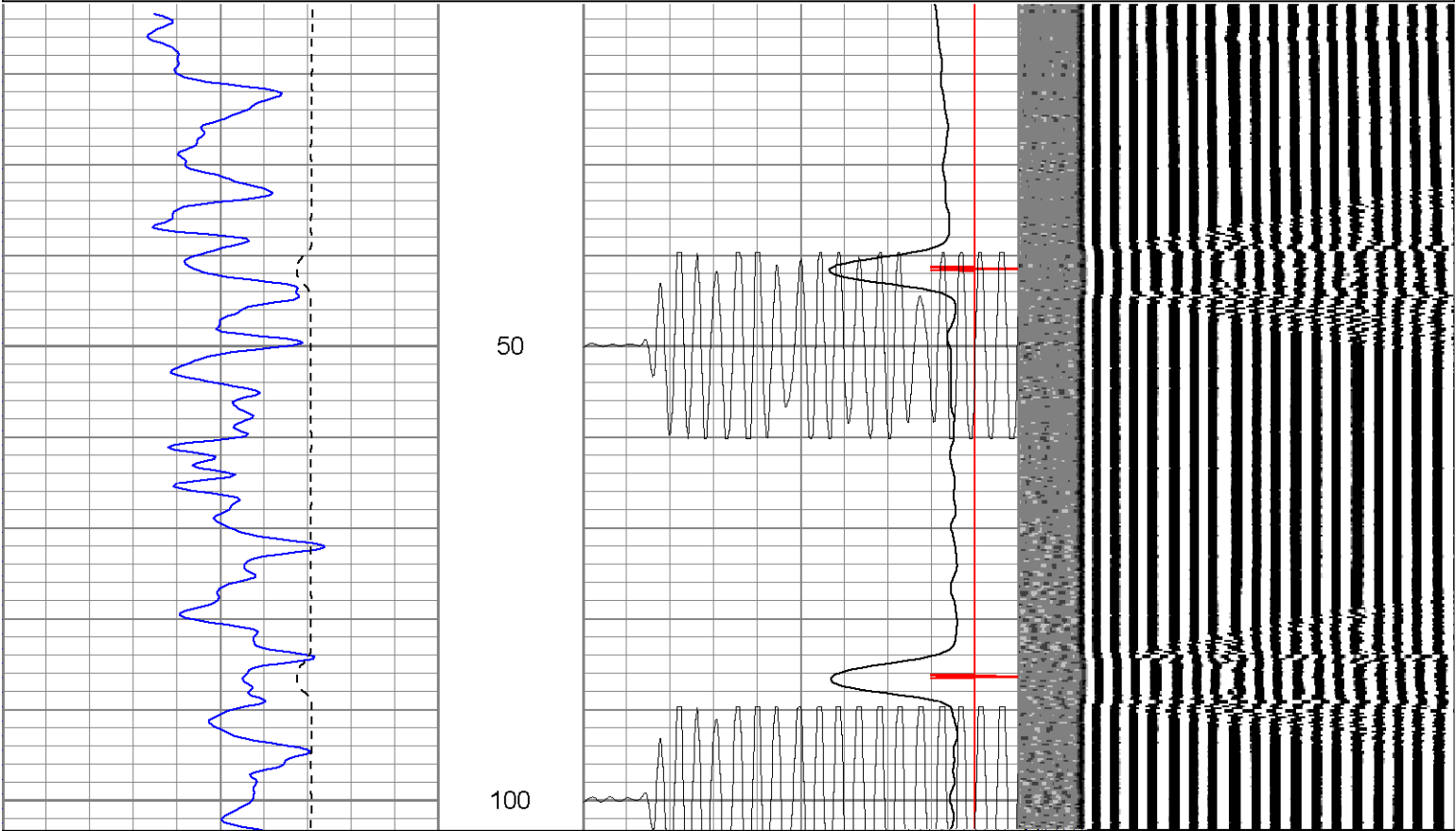
Up Lorencito Canyon XTO hill, Drive to the Top of the Hill, Stay on Main Road, Drive Past Location on Left, 1st Location on Right

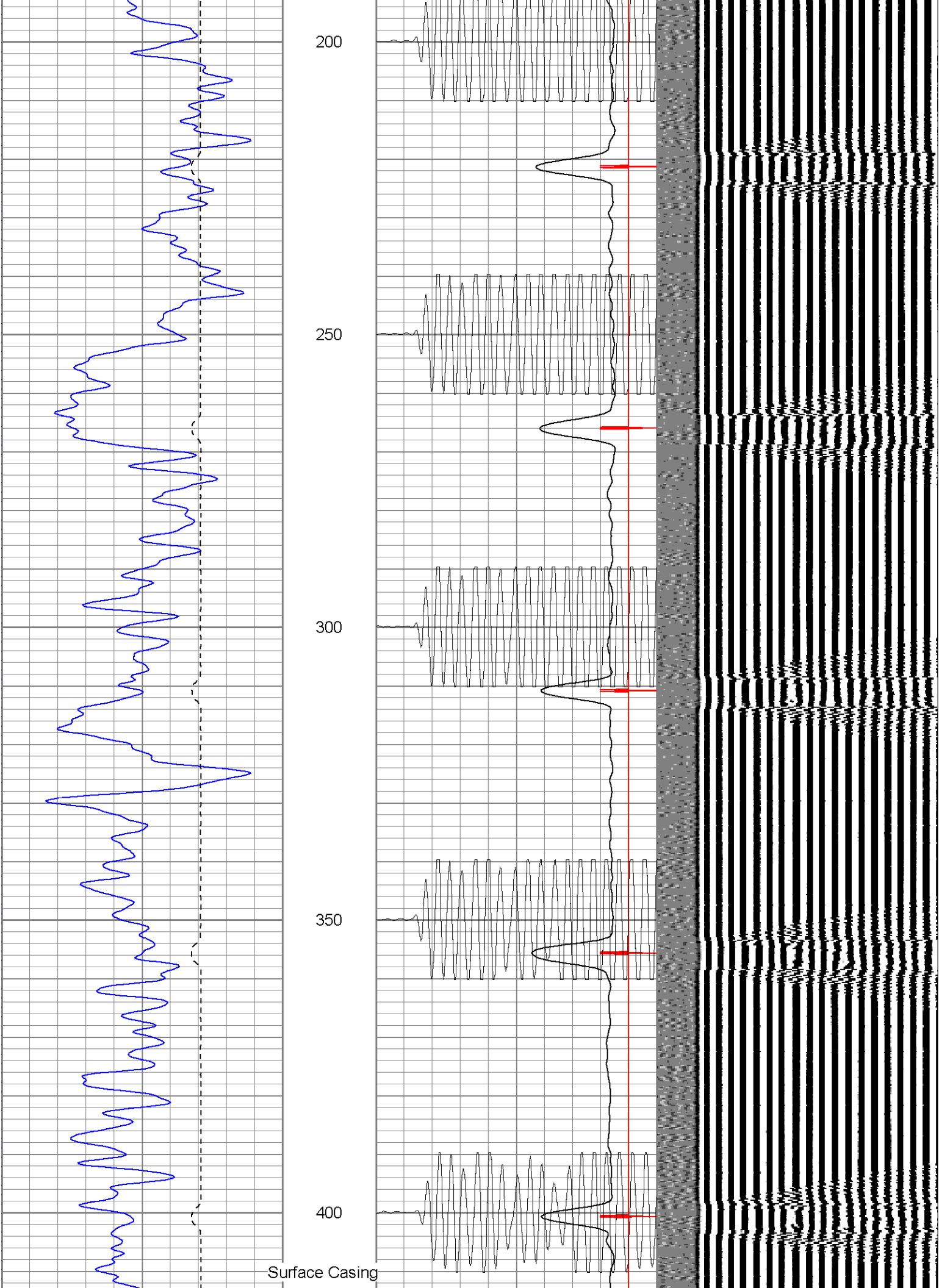
Patterson

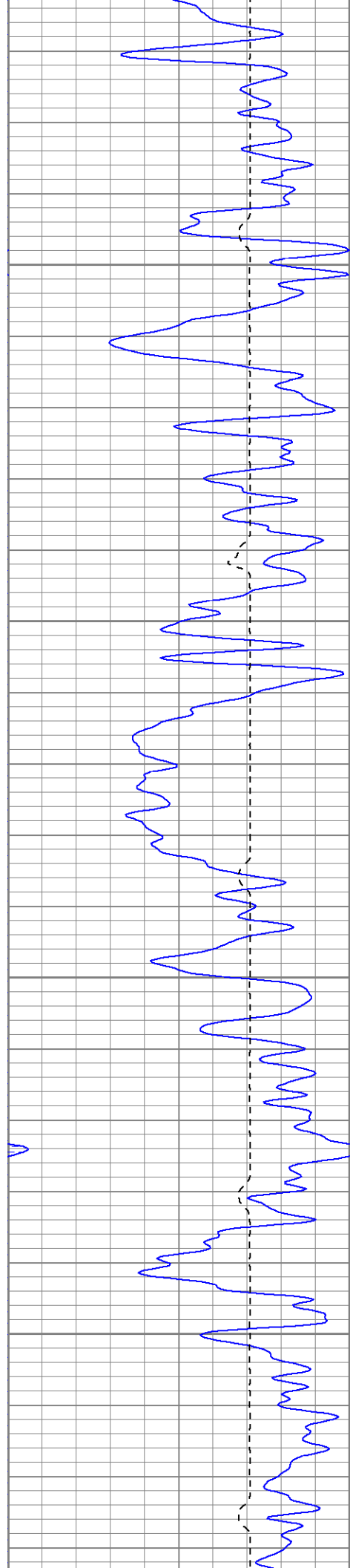
Main Pass

Database File: hillranch351592106b.db
Dataset Pathname: pass2
Presentation Format: cblrt
Dataset Creation: Thu Sep 21 13:27:45 2006 by Log Open-Cased 060407
Charted by: Depth in Feet scaled 1:240

0	GR (GAPI)	200	0	AMP3 (mV)	100	200	Variable Density	1200
200	GR (GAPI)	400	18	CCL	-2			
400	TT3 (usec)	200	200	CBL5	1200			





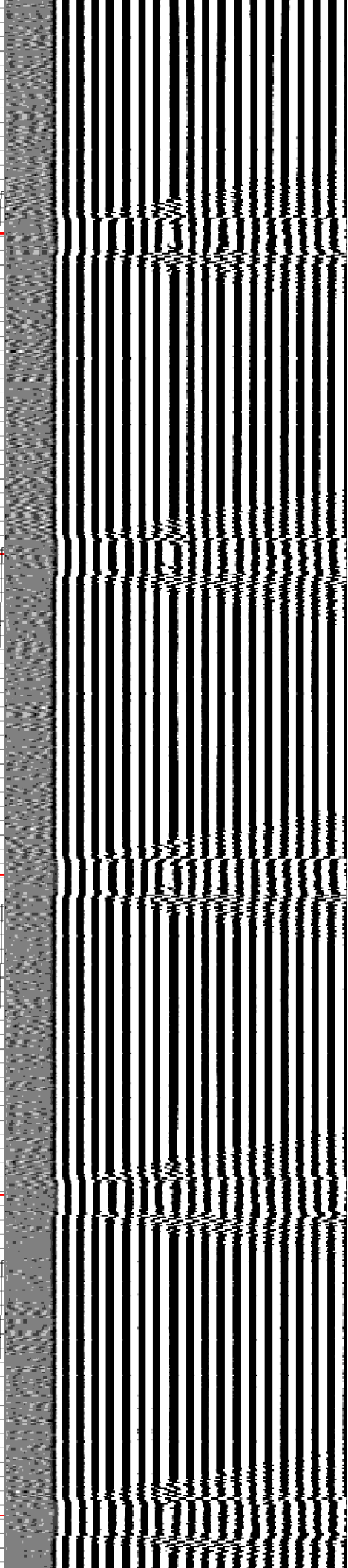
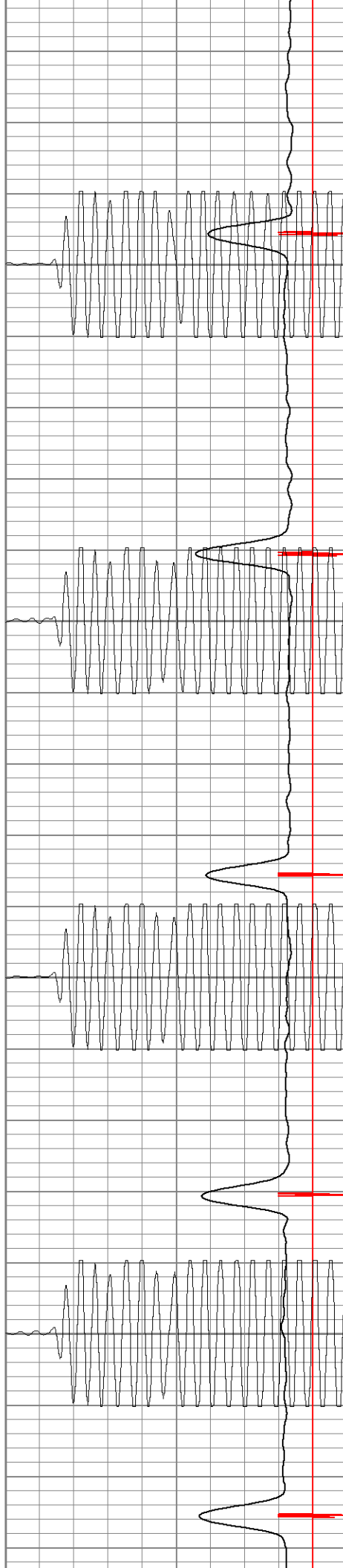


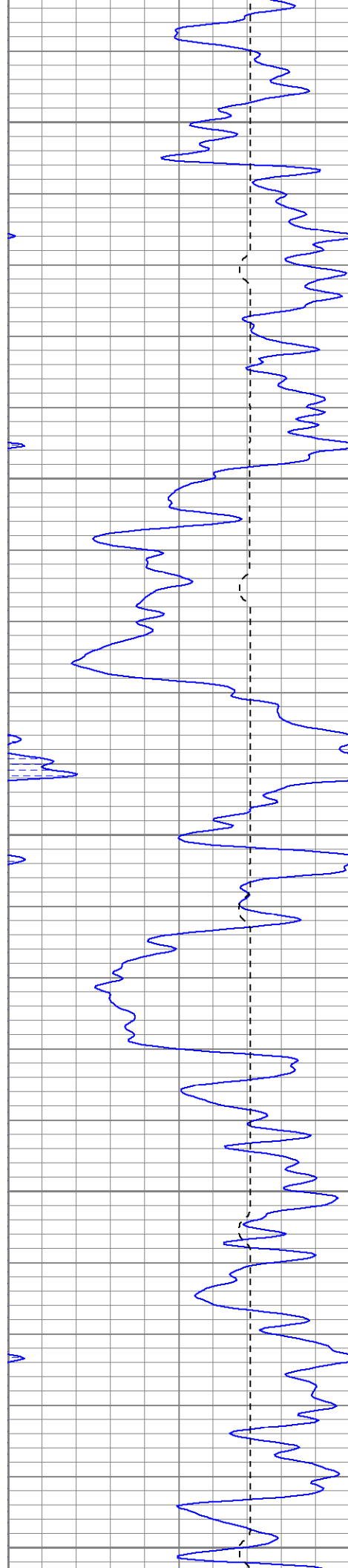
450

500

550

600





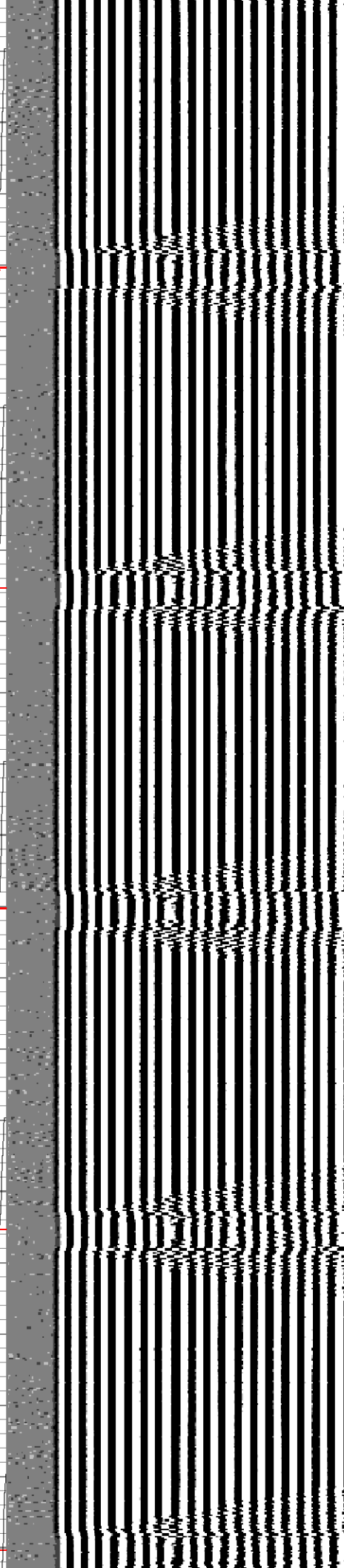
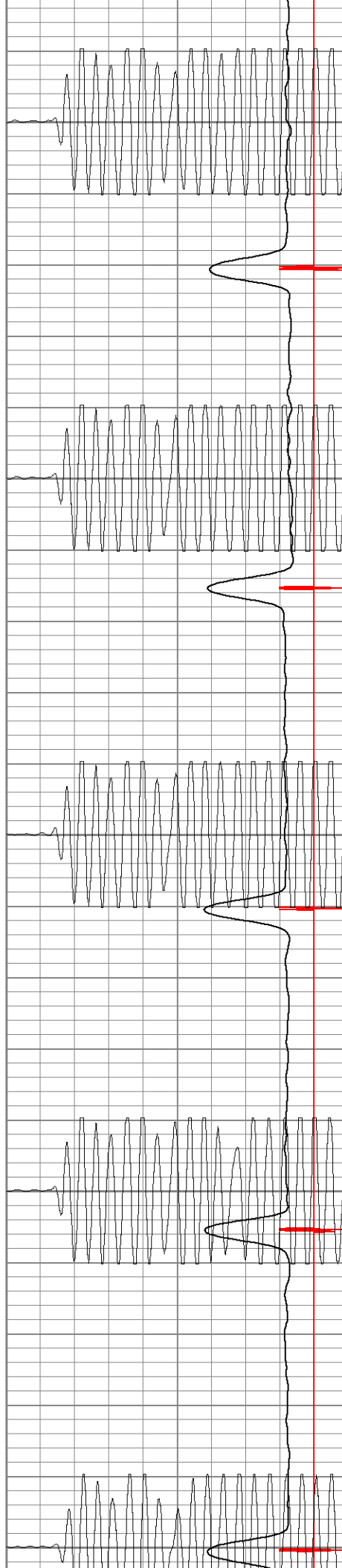
650

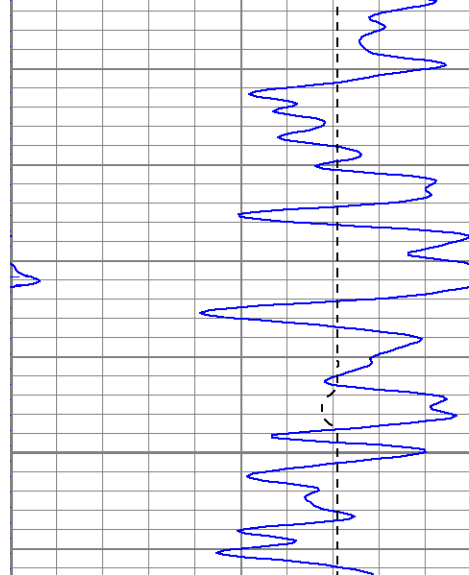
700

750

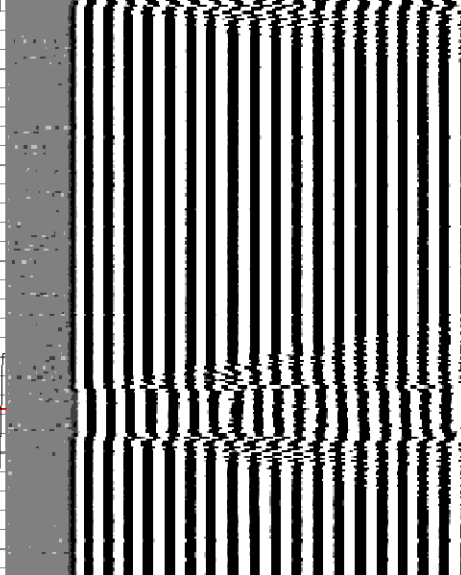
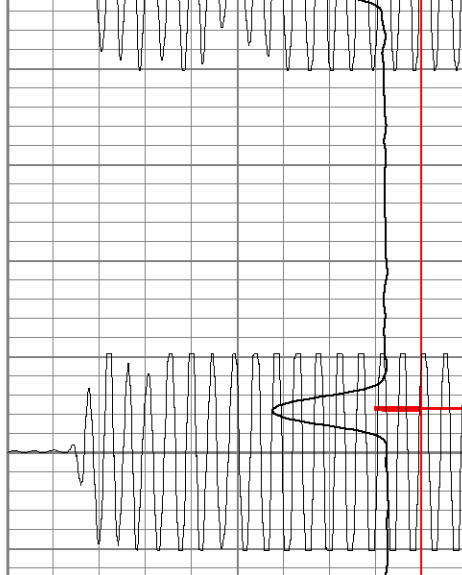
800

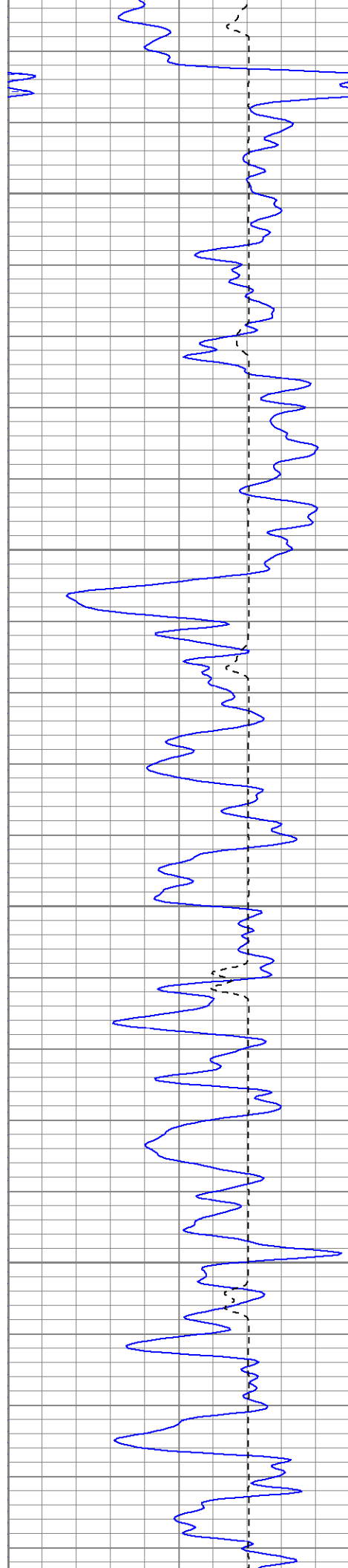
850





900



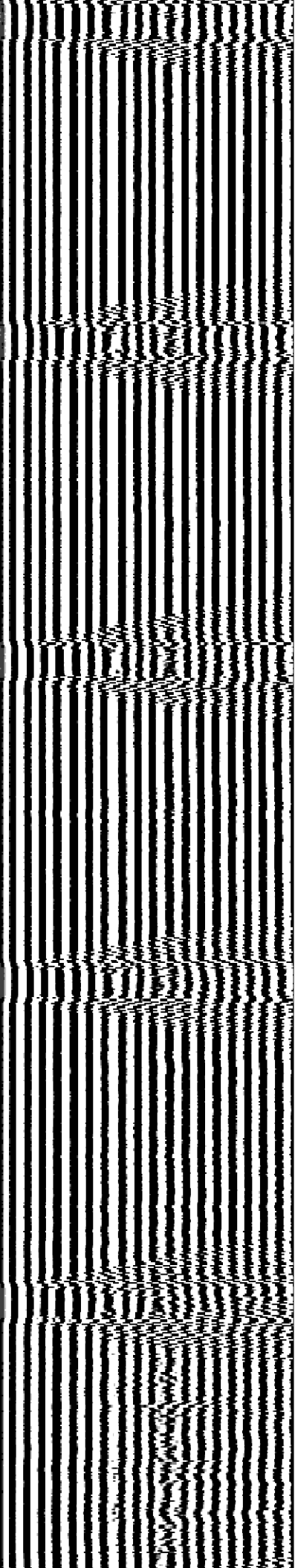
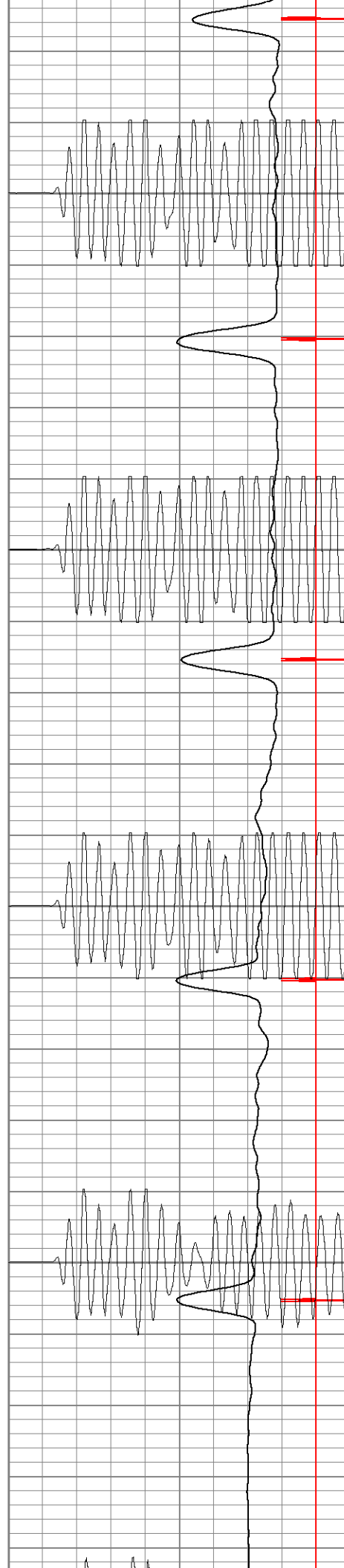


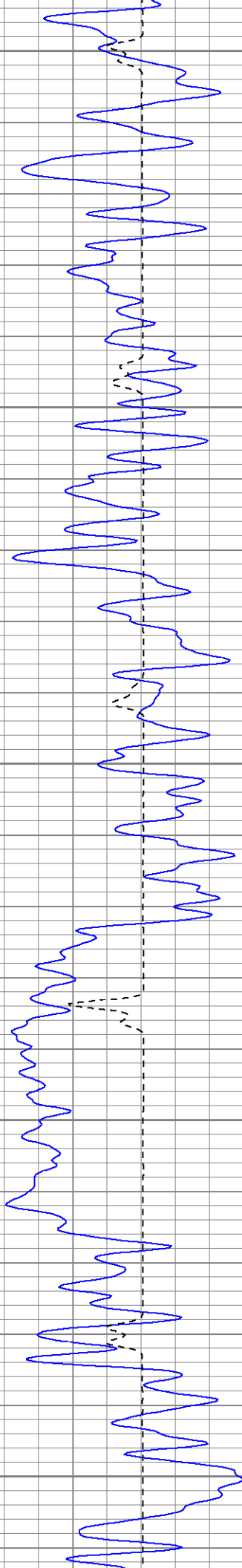
1100

1150

1200

1250





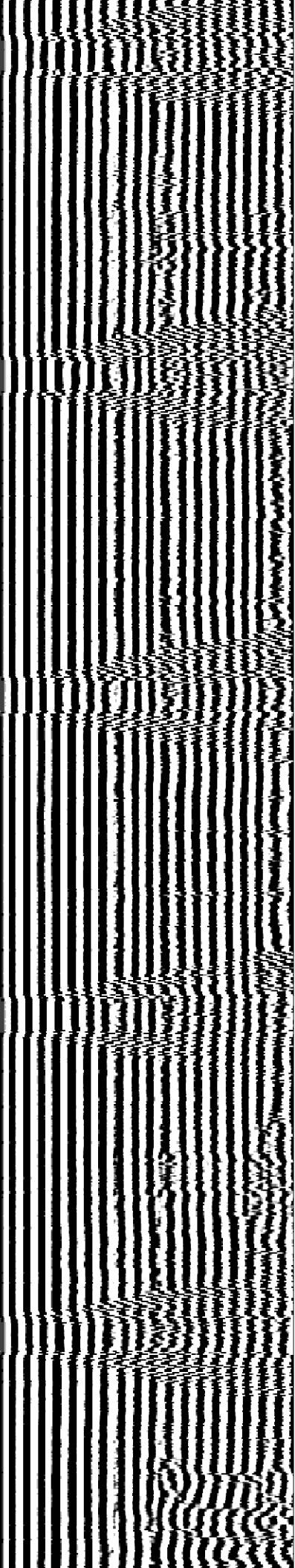
1300

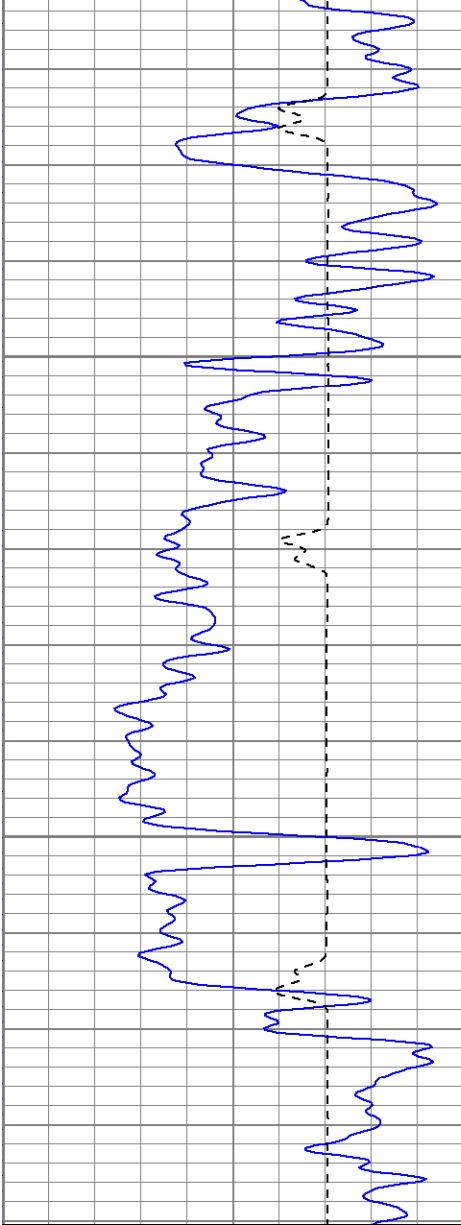
1350

1400

1450

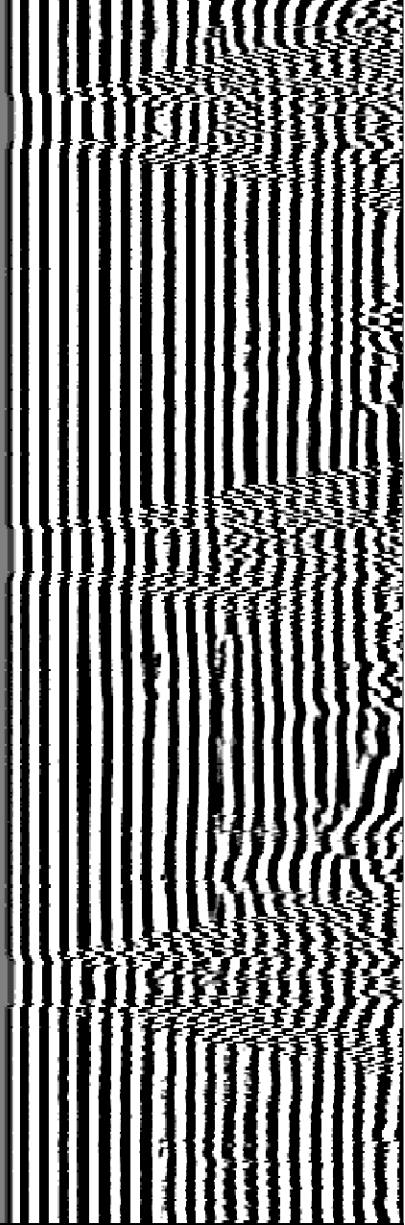
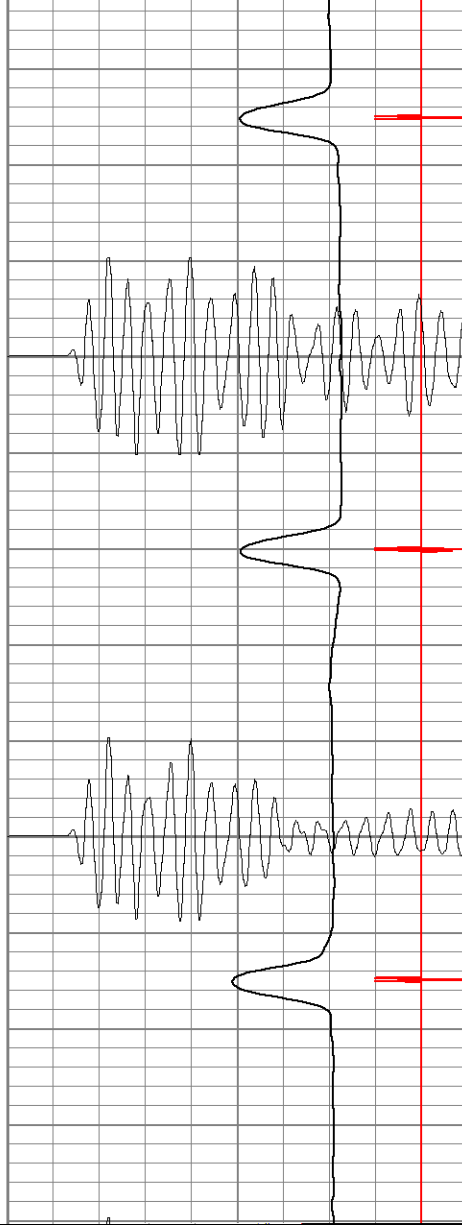
1500





1550

1600



100

100

100

100

100

100

100

100

100

100

100

100

100

100

100

100

100

100

100

100

100

100

100

100

100

100

100

100

100

100

100

100

100

100

100

100

100

100

100

100

100

100

100

100

100

100

100

100

100

100

100

100

100

100

100

100

100

100

100

100

100

100

100

100

100

100

100

100

100

100

100

100

100

100

100

100

100

100

100

100

100

100

100

100

100

100

100

100

100

100

100

100

100

100

100

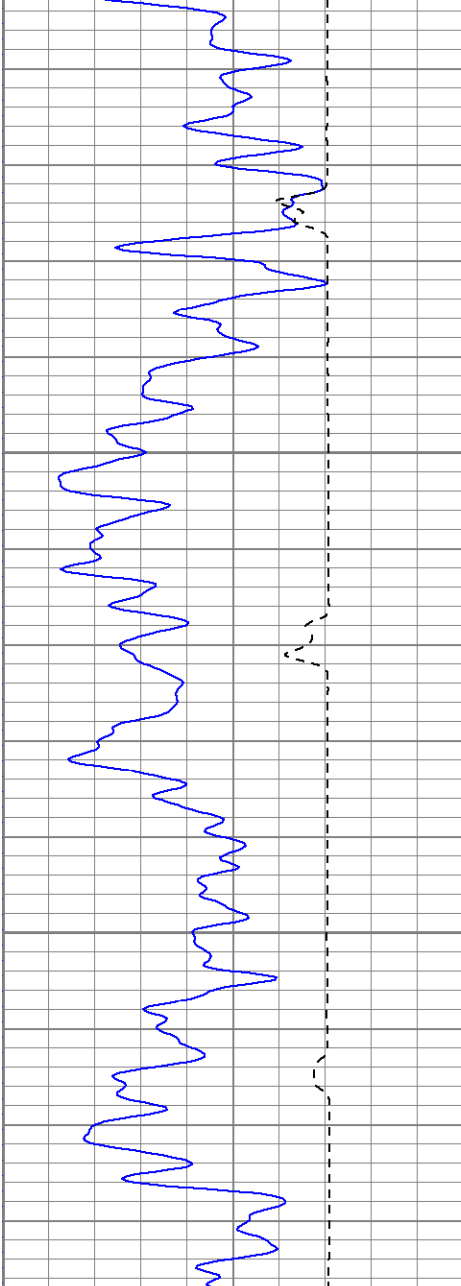
100

100

100

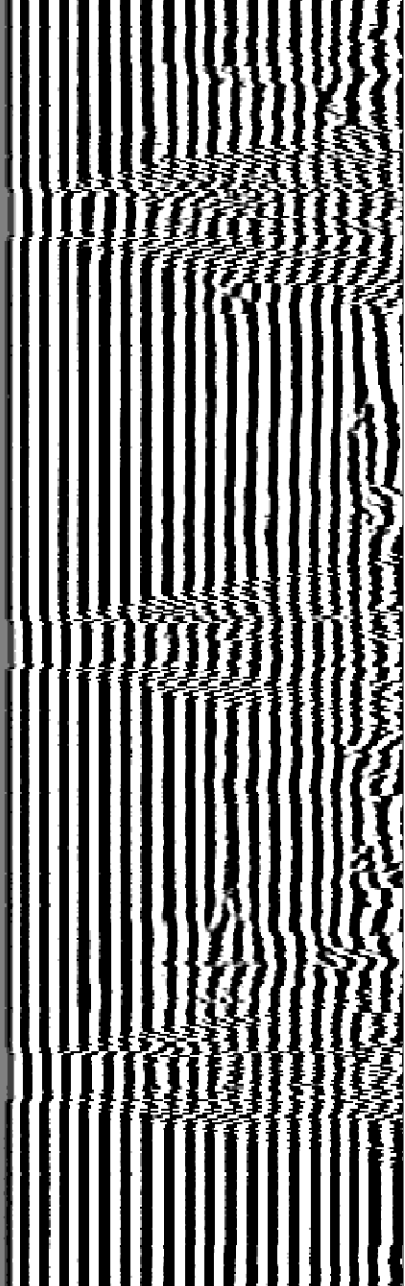
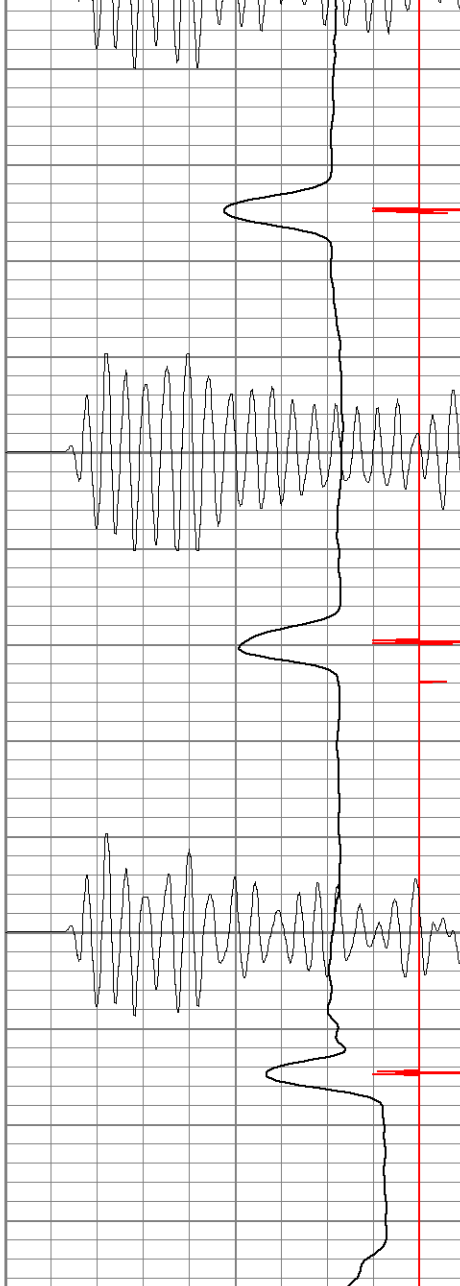
100

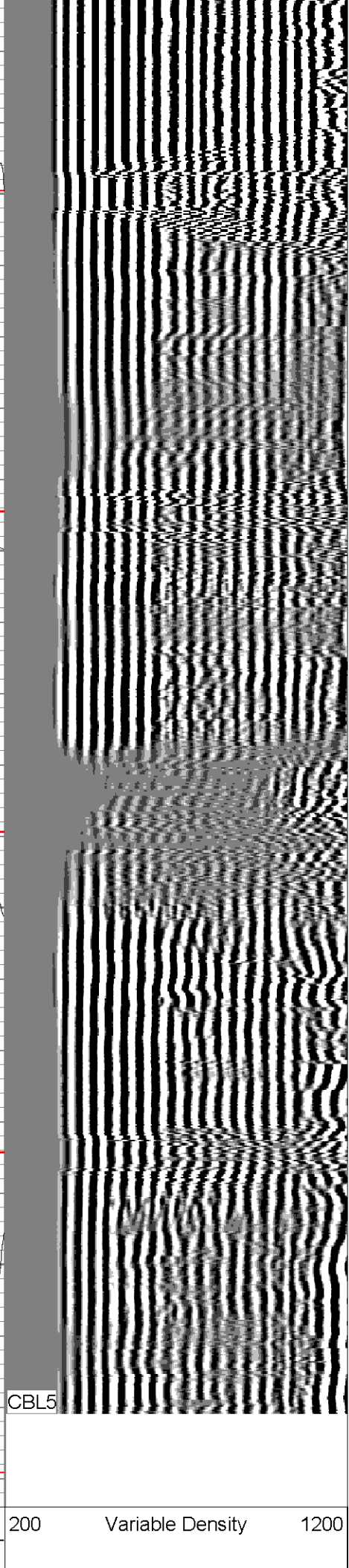
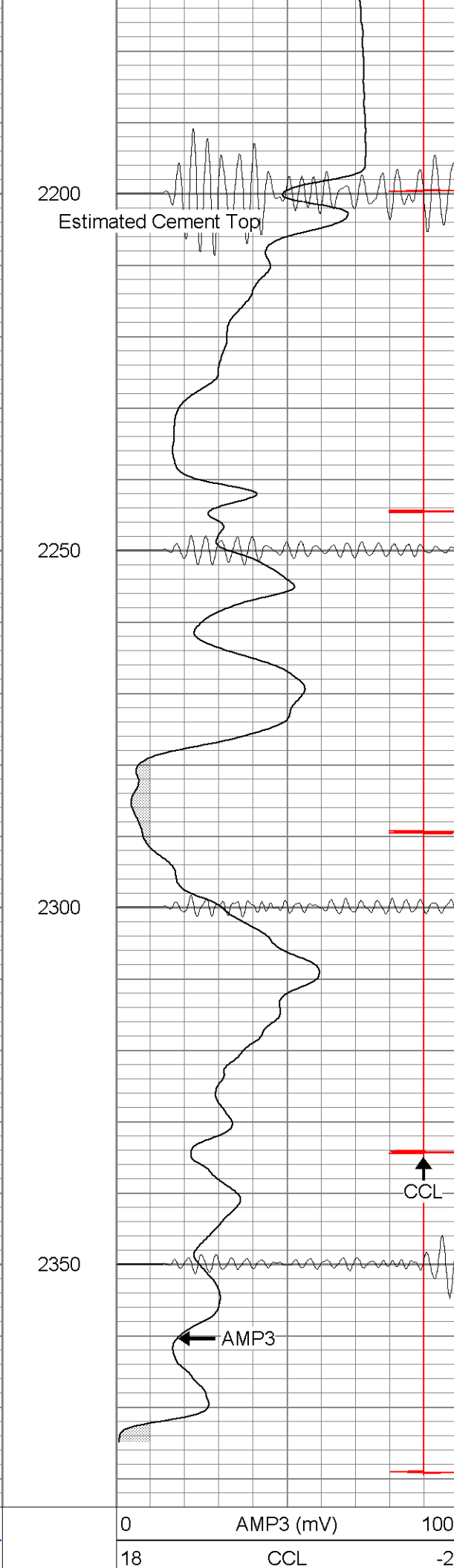
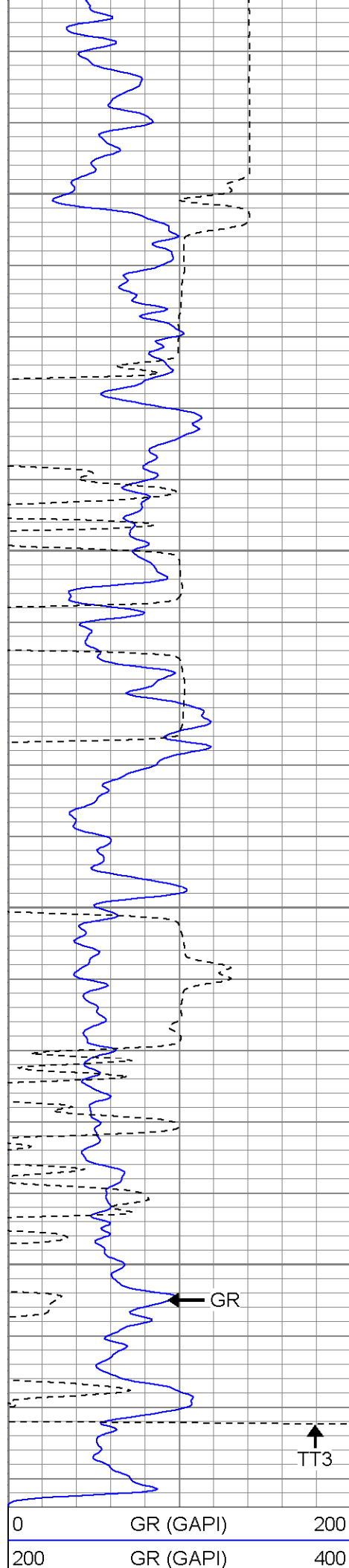
100



2000

2050





400	TT3 (usec)	200

200	CBL5	1200
-----	------	------

Patterson

Repeat Section

Database File: hillranch351592106b.db
Dataset Pathname: pass1
Presentation Format: cblrt
Dataset Creation: Thu Sep 21 13:19:56 2006 by Log Open-Cased 060407
Charted by: Depth in Feet scaled 1:240

