



SUPERIOR
Black Lick, Pa.
Mercer, Pa.
Wooster, Oh.
Cleveland, Ok.
Trinidad, Co.

CEMENT BOND GAMMA RAY LOG

Company XTO Energy, Inc.

Well Apache Canyon 13-01

Field Purgatoire River

County Las Animas

State CO

Location: API #: 05 071 08821 00

151' FNL & 39' FEL

SEC 13 TWP 34S RGE 68W

Permanent Datum Ground Level Elevation 7769'
Log Measured From Ground Level
Drilling Measured From Ground Level

Elevation
K.B. -----
D.F. -----
G.L. 7769'

Date

2-7-07

Run Number

Two

Depth Driller

2125'

Depth Logger

847'

Bottom Logged Interval

845'

Top Log Interval

Surface

Open Hole Size

7 7/8"

Type Fluid

Water

Density / Viscosity

///

Max. Recorded Temp.

///

Estimated Cement Top

16'

Time Well Ready

2:45PM

Time Logger on Bottom

3:15PM

Equipment Number

T0698

Location

Trinidad

Recorded By

J Sineros

Witnessed By

Mr. Terry Maxwell

Run Number

Bit

From

To

Size

Weight

From

To

Size

Wgt/Ft

Top

Bottom

00

447'

00

N/A

<<< Fold Here >>>

All interpretations are opinions based on inferences from electrical or other measurements and we cannot and do not guarantee the accuracy or correctness of any interpretation, and we shall not, except in the case of gross or willful negligence on our part, be liable or responsible for any loss, costs, damages, or expenses incurred or sustained by anyone resulting from any interpretation made by any of our officers, agents or employees. These interpretations are also subject to our general terms and conditions set out in our current Price Schedule.

Comments

First Bosque Entrance just before Weston, drive to Big Bingham Canyon, turn right, go 2.2 miles turn left, go thru yellow gate, 1st right to location



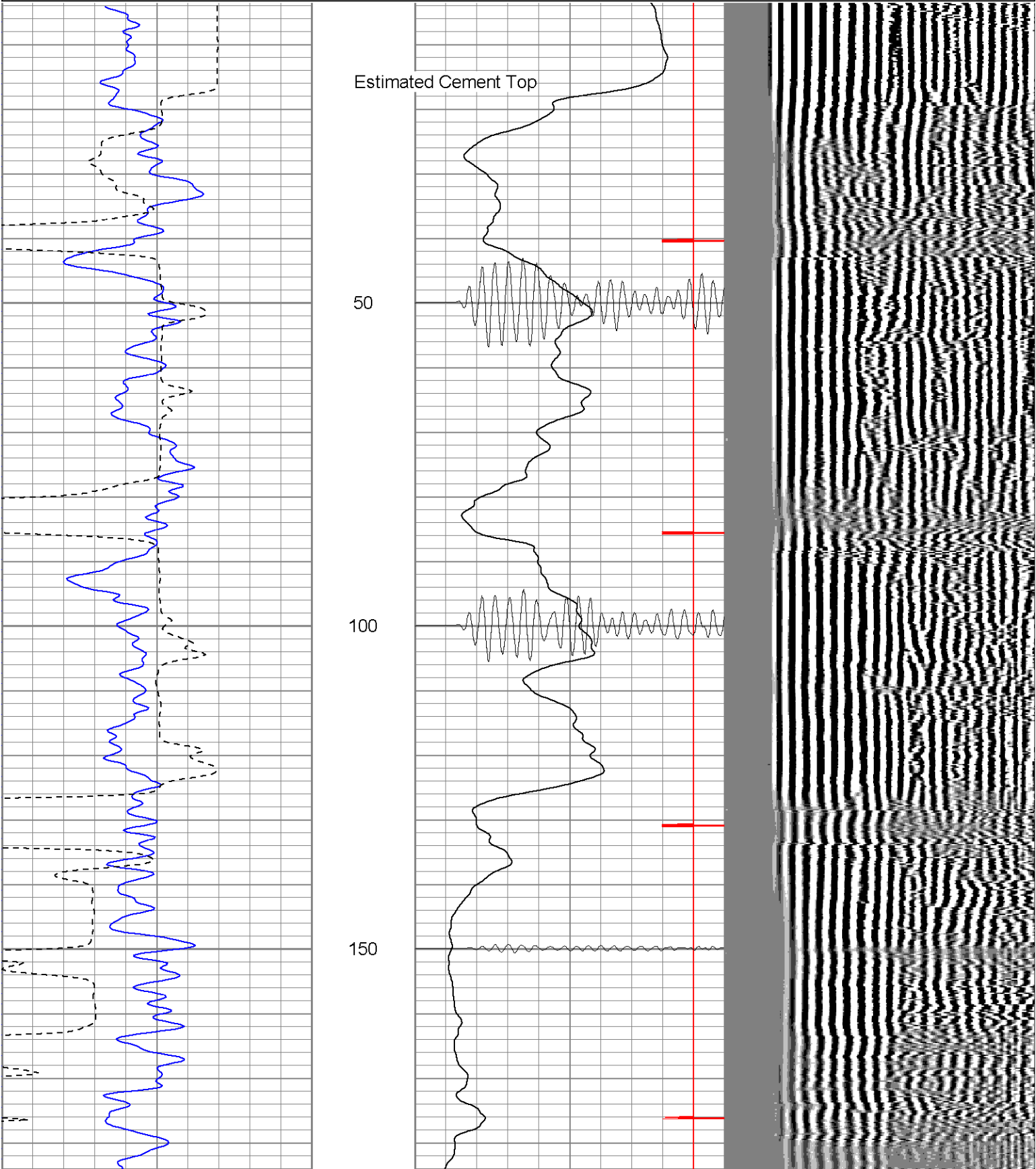
SUPERIOR

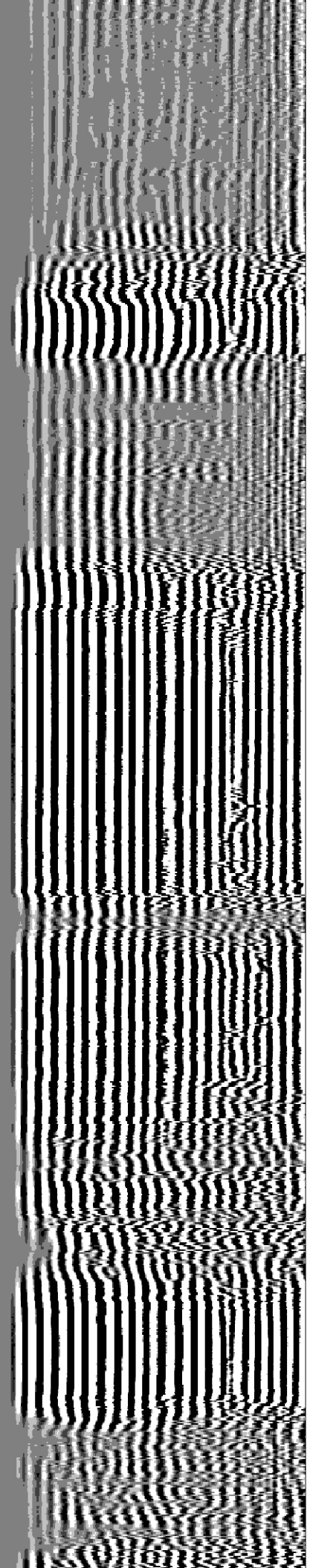
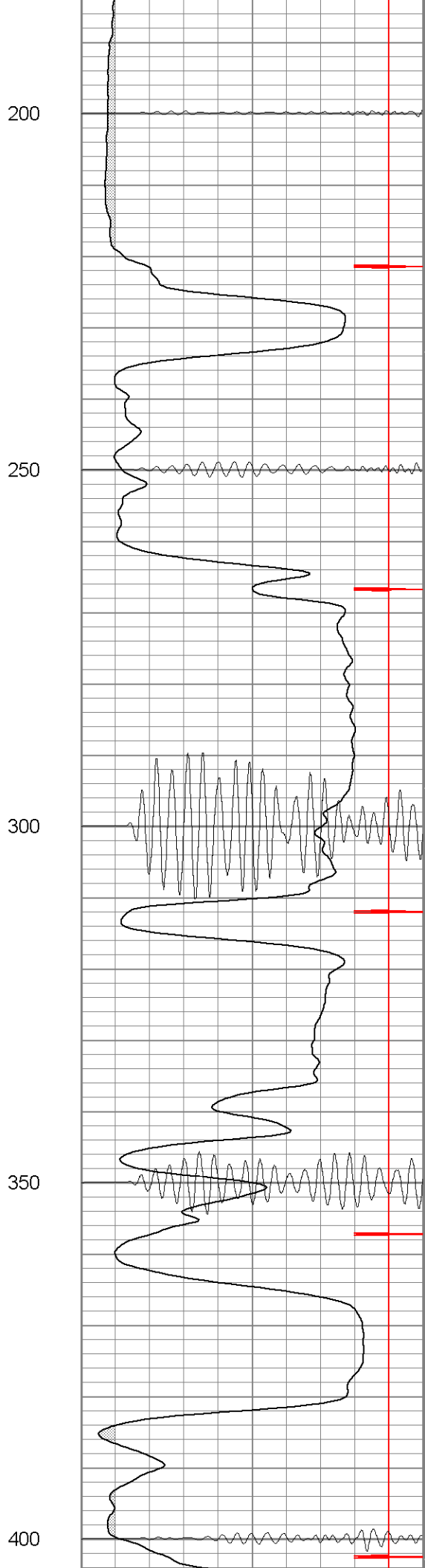
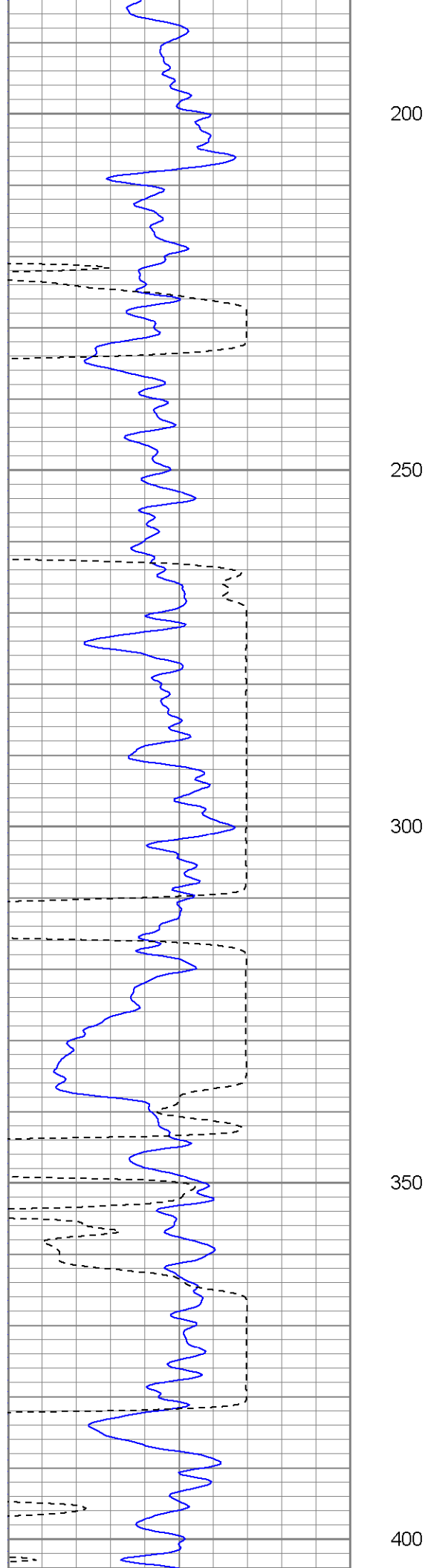
Black Lick, Pa.
Mercer, Pa.
Wooster, Oh.
Cleveland, Ok.
Trinidad, Co.

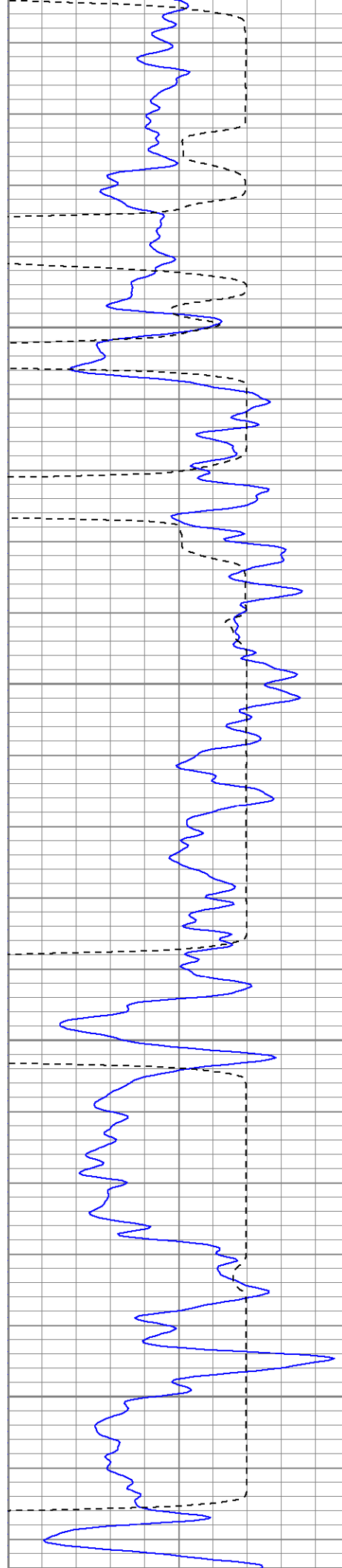
Main Pass

Database File: ac13012707b.db
Dataset Pathname: pass2
Presentation Format: cblrt
Dataset Creation: Wed Feb 07 15:32:12 2007 by Log Open-Cased 060407
Charted by: Depth in Feet scaled 1:240

0	GR (GAPI)	200	0	AMP3 (mV)	100	200	Variable Density	1200
200	GR (GAPI)	400	18	CCL	-2			
400	TT3 (usec)	200	200	CBL5	1200			





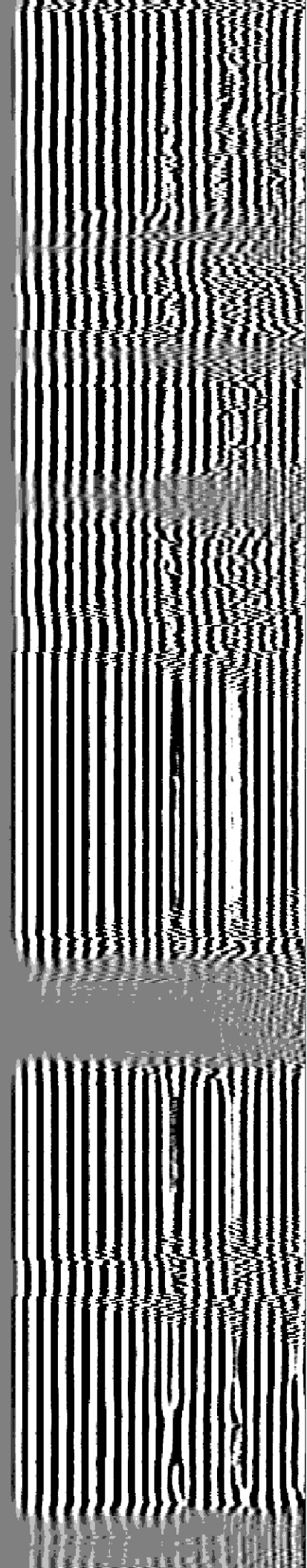


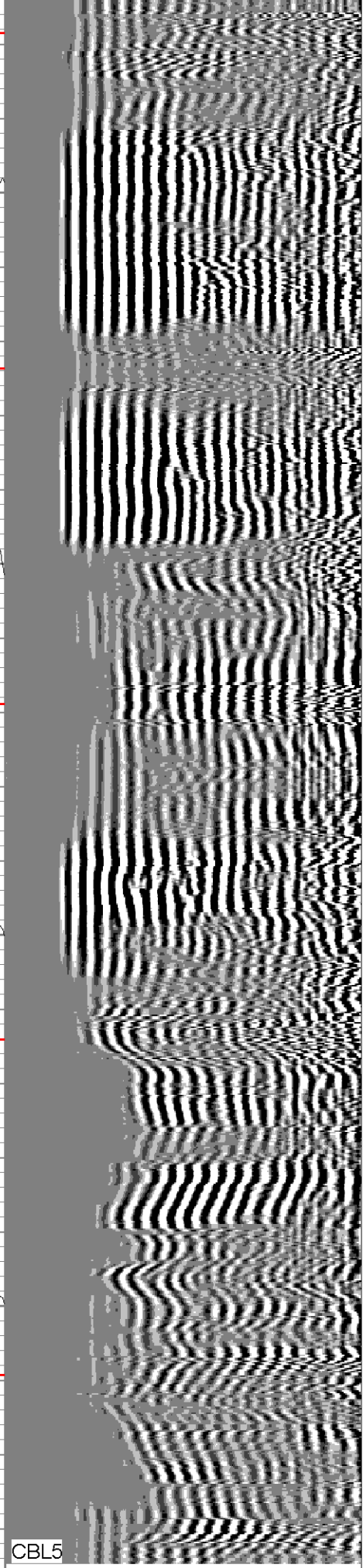
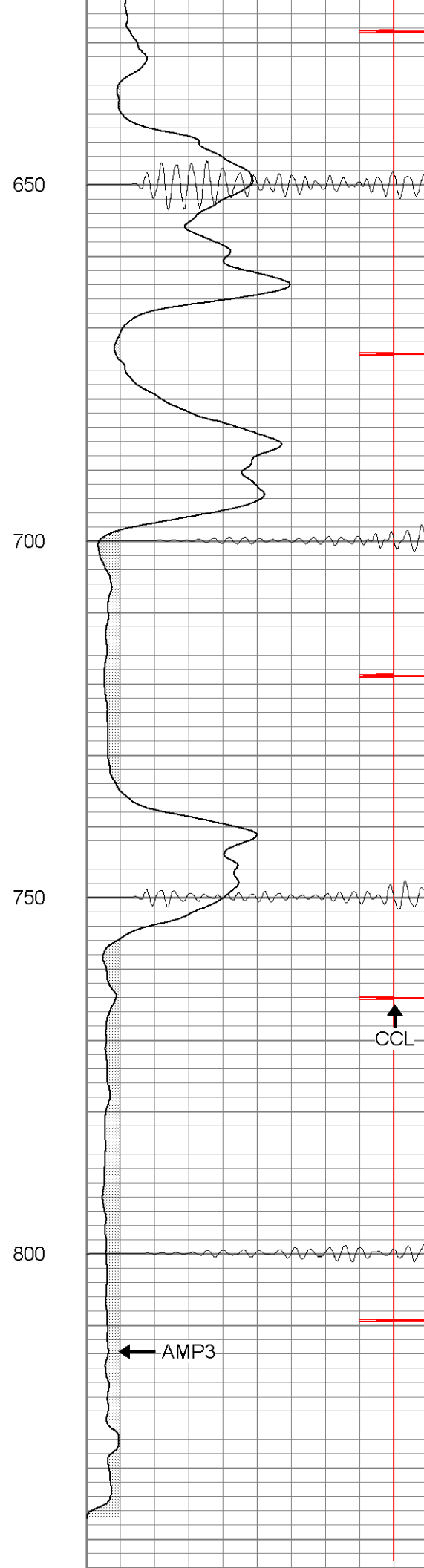
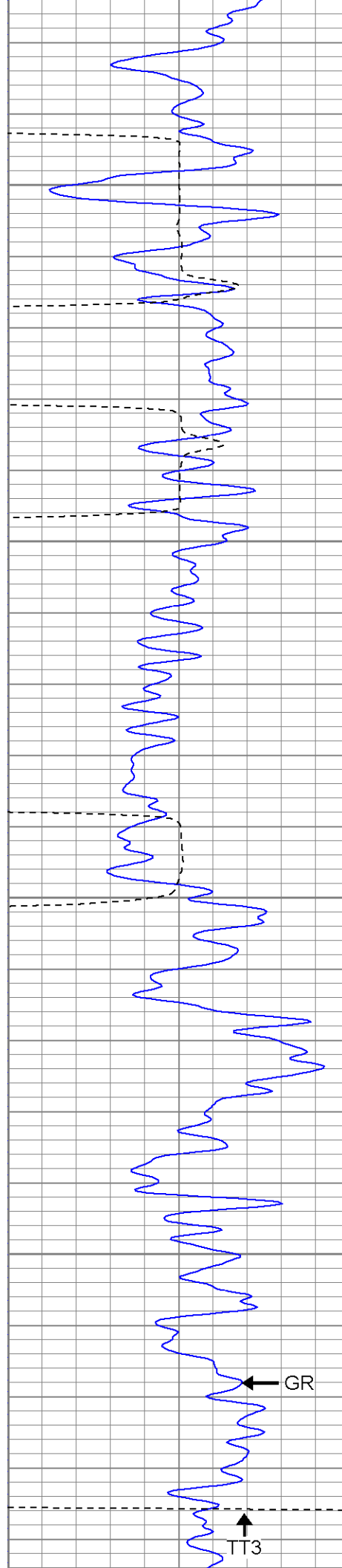
Surface Casing
450

500

550

600





0	GR (GAPI)	200	0	AMP3 (mV)	100	200	Variable Density	1200
200	GR (GAPI)	400	18	CCL	-2			
400	TT3 (usec)	200	200	CBL5	1200			



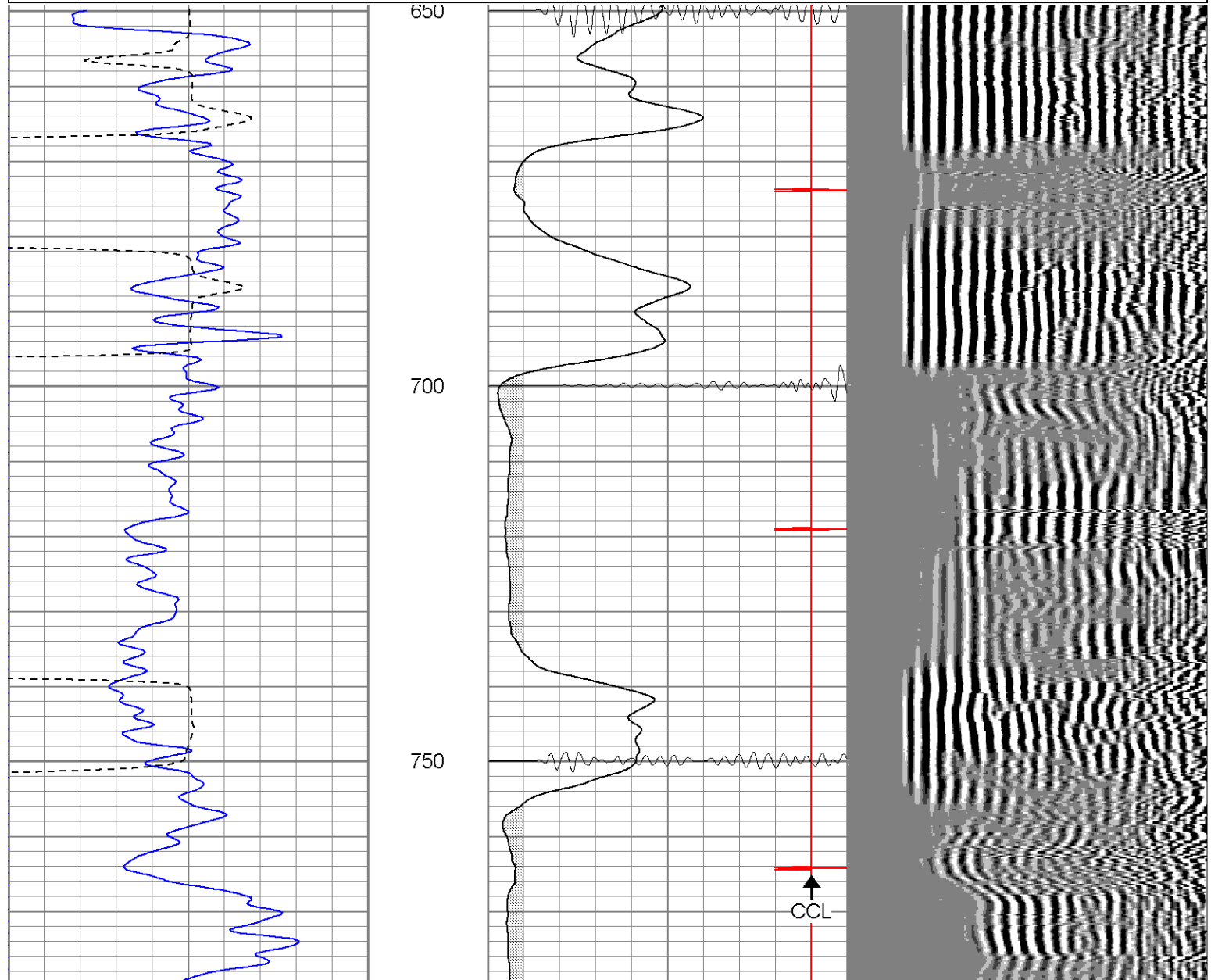
SUPERIOR

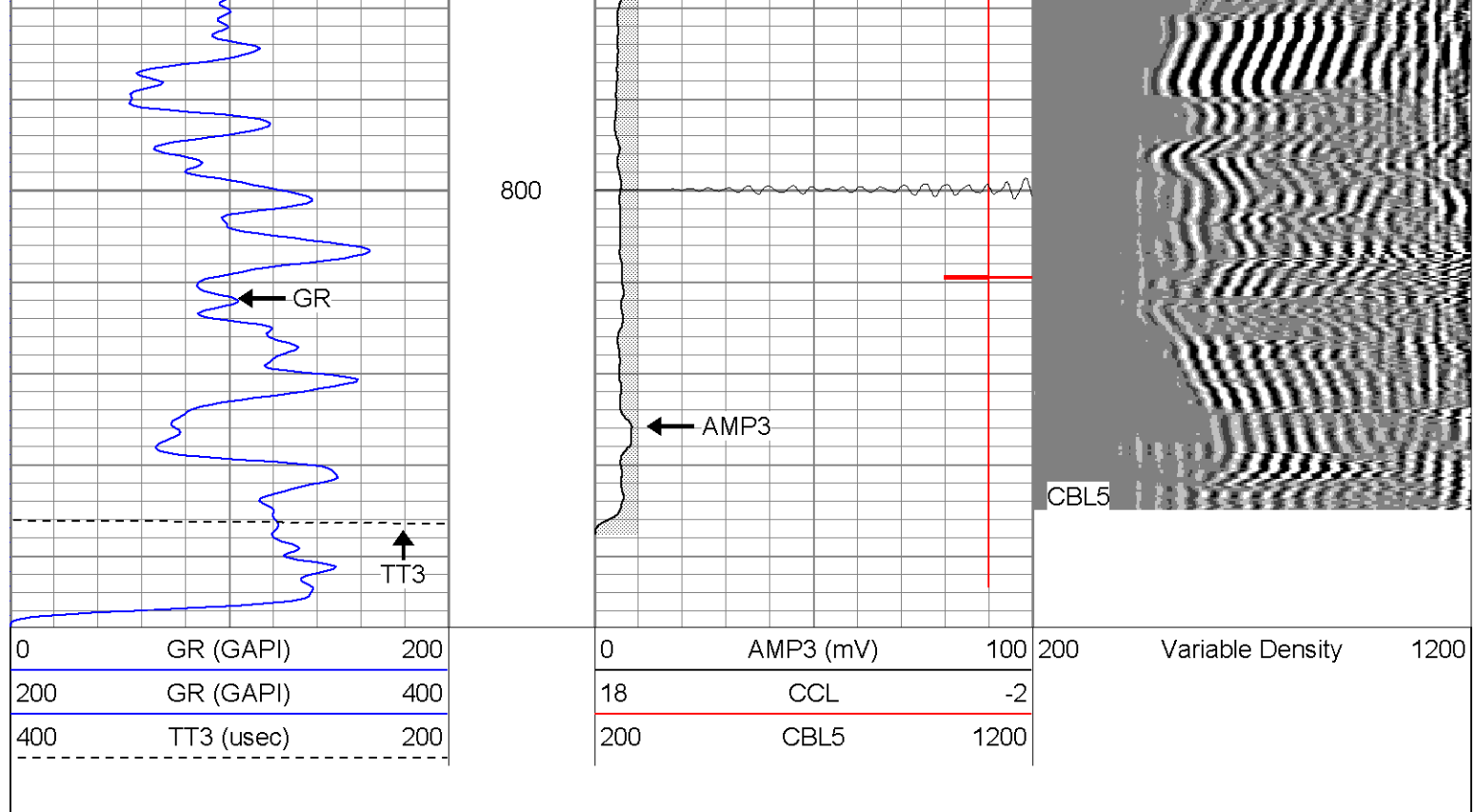
Black Lick, Pa.
Mercer, Pa.
Wooster, Oh.
Cleveland, Ok.
Trinidad, Co.

Repeat Section

Database File: ac13012707b.db
 Dataset Pathname: pass1
 Presentation Format: cblrt
 Dataset Creation: Wed Feb 07 15:23:33 2007 by Log Open-Cased 060407
 Charted by: Depth in Feet scaled 1:240

0	GR (GAPI)	200	0	AMP3 (mV)	100	200	Variable Density	1200
200	GR (GAPI)	400	18	CCL	-2			
400	TT3 (usec)	200	200	CBL5	1200			





Calibration Report

Database File: ac13012707b.db
 Dataset Pathname: pass1
 Dataset Creation: Wed Feb 07 15:23:33 2007 by Log Open-Cased 060407

Gamma Ray Calibration Report

Serial Number: Titan2.75
 Tool Model: 2.75
 Performed: Fri Jan 26 10:30:12 2007

Calibrator Value: 200.0 GAPI

Background Reading: 40.0 cps
 Calibrator Reading: 240.0 cps

Sensitivity: 1.1000 GAPI/cps

Cement Bond Log Calibration Report

Serial Number: Titan4
 Tool Model: 4
 Performed: Fri Jan 26 11:14:49 2007

Depth: 1054.62 ft
 Casing Diameter: 5.5 in

	3' Spacing	5' Spacing	
Signal Zero:	0	1	mV
Calibrated Amplitude:	85	85	mV
Reading at Signal Zero:	0.00161133	0.0143555	V
Reading in Free Pipe:	1.27	1.65081	V
Gain:	67.0142	51.3306	
Offset:	0.25	0.263125	

Sensor	Offset (ft)	Schematic	Description	Len (ft)	OD (in)	Wt (lb)
CHD	20.38		CHD-None (0)	0.75	1.50	5.00
CENT	19.63		CENT-X (2)	3.00	1.69	25.00
WVF5	12.82		CBL-4 (Titan4)	8.15	2.25	110.00
WVF3	11.82					
CENT	8.48		CENT-X (1)	3.00	1.69	25.00
CCL	4.27		CCL-2.75 (Titan2.75)	1.71	2.75	15.00
GR	1.42		GR-2.75 (Titan2.75) Two Point	3.77	2.75	25.00
Dataset: ac13012707b.db: field/well/run1/pass1 Total Length: 20.38 ft Total Weight: 205.00 lb O.D. 2.75 in						