



SUPERIOR
Black Lick, Pa.
Mercer, Pa.
Wooster, Oh.
Cleveland, Ok.
Trinidad, Co.

CEMENT BOND GAMMA RAY LOG

Company		XTO Energy, Inc.	
Well		Apache Canyon 24-08	
Field		Purgatoire River	
County		Las Animas	
State		CO	
Location:		API # : 05 071 08820 00 1981' FNL & 1060' FEL	
Permanent Datum		Ground Level	
Log Measured From		Ground Level	
Drilling Measured From		Ground Level	
SEC 24 TWP 34S RGE 68W		Elevation 7726'	
Other Services Pressure Control		Elevation K.B. ----- D.F. ----- G.L. 7730'	
Date		2-7-07	
Run Number		One	
Depth Driller		2065'	
Depth Logger		1981'	
Bottom Logged Interval		1979'	
Top Log Interval		Surface	
Open Hole Size		7 7/8"	
Type Fluid		Water	
Density / Viscosity		///	
Max. Recorded Temp.		92F	
Estimated Cement Top		180'	
Time Well Ready		ROA	
Time Logger on Bottom		8:00 AM	
Equipment Number		T0698	
Location		Trinidad	
Recorded By		J Sisneros	
Witnessed By		Mr. Terry Maxwell	
Run Number		Borehole Record	
Bit		From	
To		Size	
Weight		From	
To		Tubing Record	
Casing Record		Size	
Surface String		8 5/8"	
Prot. String		Wgt/Ft	
Production String		Top	
Liner		Bottom	
5 1/2"		00	
		456'	
		N/A	

<<< Fold Here >>>

All interpretations are opinions based on inferences from electrical or other measurements and we cannot and do not guarantee the accuracy or correctness of any interpretation, and we shall not, except in the case of gross or willful negligence on our part, be liable or responsible for any loss, costs, damages, or expenses incurred or sustained by anyone resulting from any interpretation made by any of our officers, agents or employees. These interpretations are also subject to our general terms and conditions set out in our current Price Schedule.

Comments

First Bosque Entrance just before Weston, Stay on Main Road for seven and a half miles, turn right up hill, First left to Location

Repeat Section (0 PSI)
Main Pass (1000PSI)



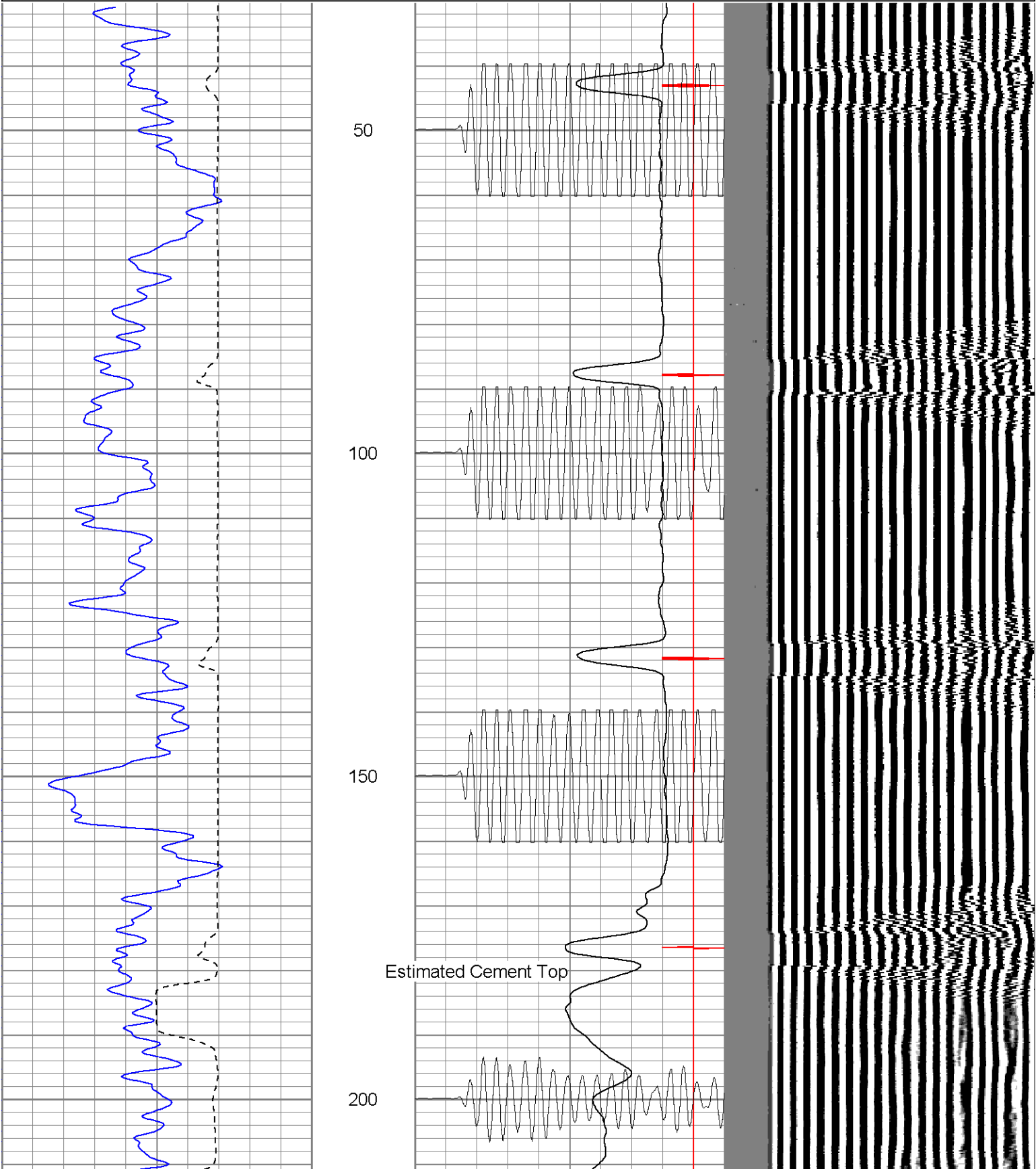
SUPERIOR

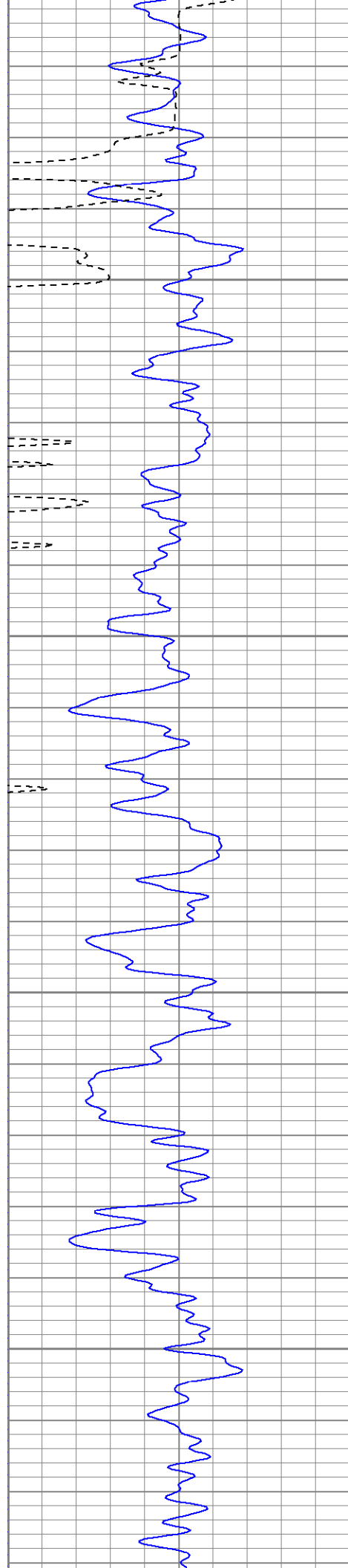
Black Lick, Pa.
Mercer, Pa.
Wooster, Oh.
Cleveland, Ok.
Trinidad, Co.

Main Pass (1000 PSI)

Database File: ac24082707b.db
Dataset Pathname: pass2.1
Presentation Format: cblrt
Dataset Creation: Wed Feb 07 09:56:13 2007 by Calc Open-Cased 060407
Charted by: Depth in Feet scaled 1:240

0	GR (GAPI)	200	0	AMP3 (mV)	100	200	Variable Density	1200
200	GR (GAPI)	400	18	CCL	-2			
400	TT3 (usec)	200	200	CBL5	1200			



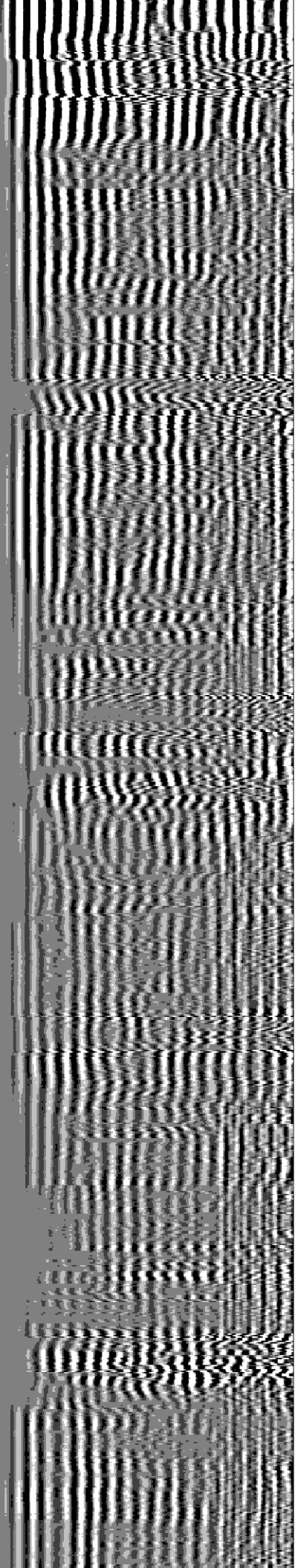


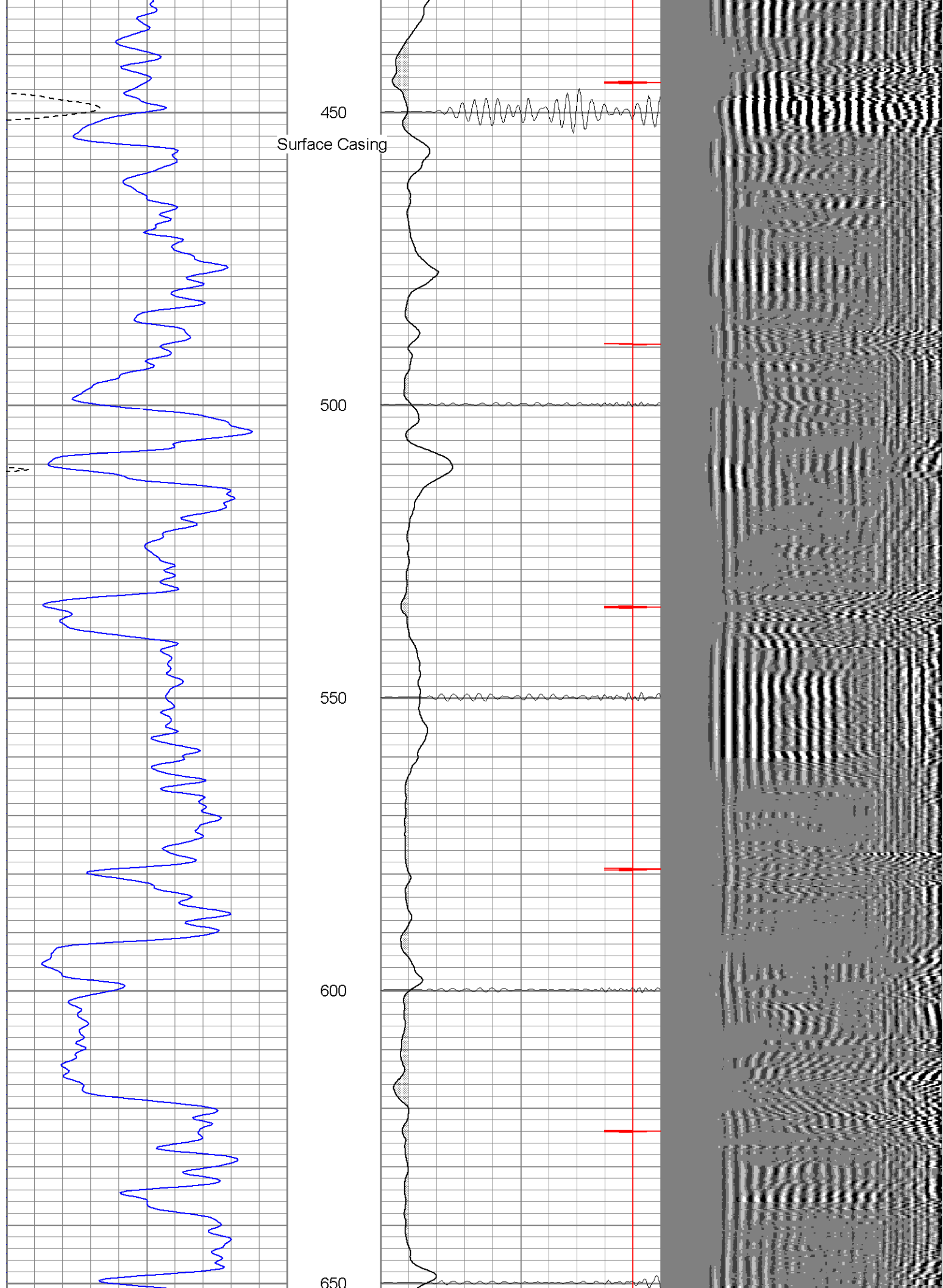
250

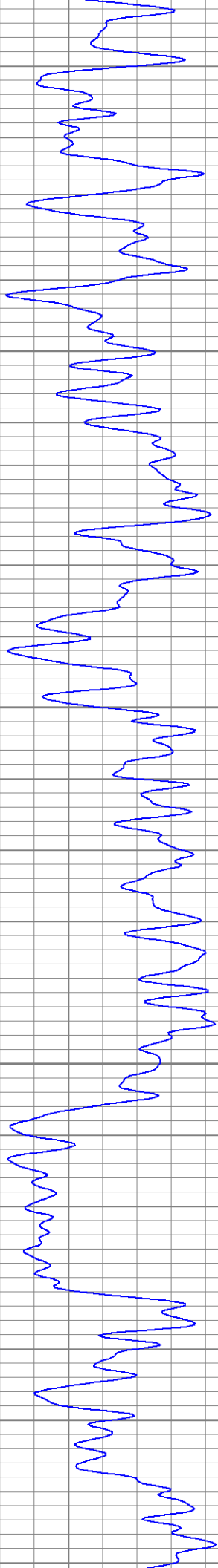
300

350

400





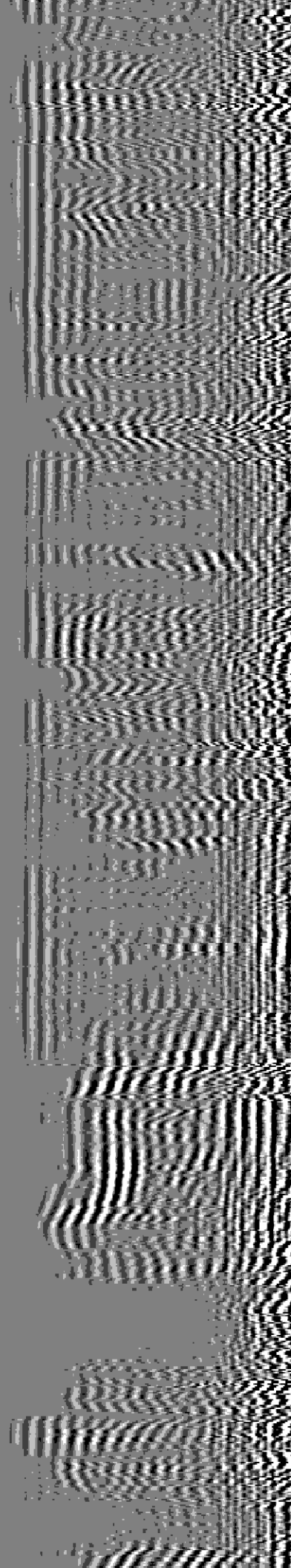
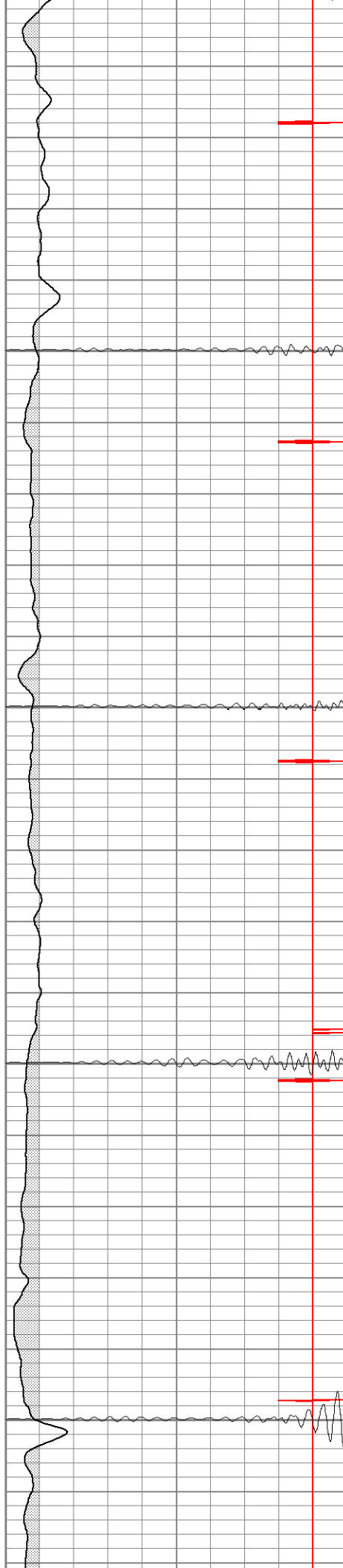


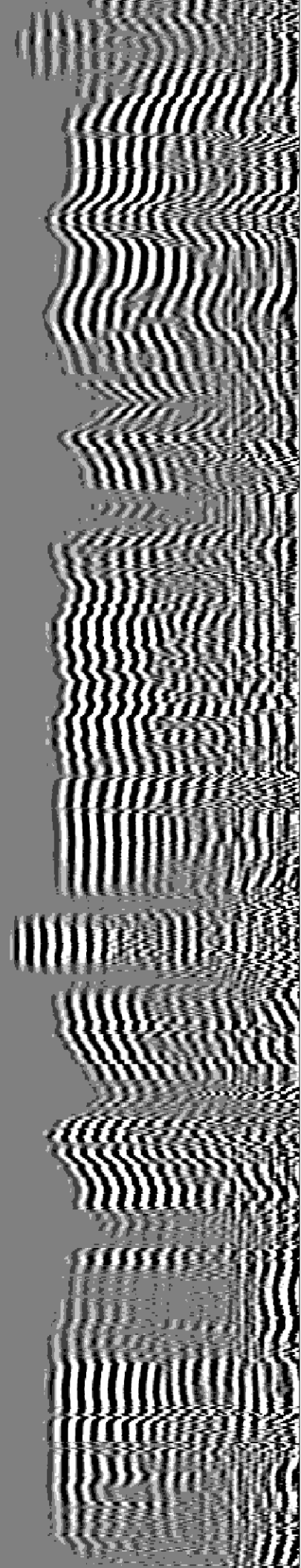
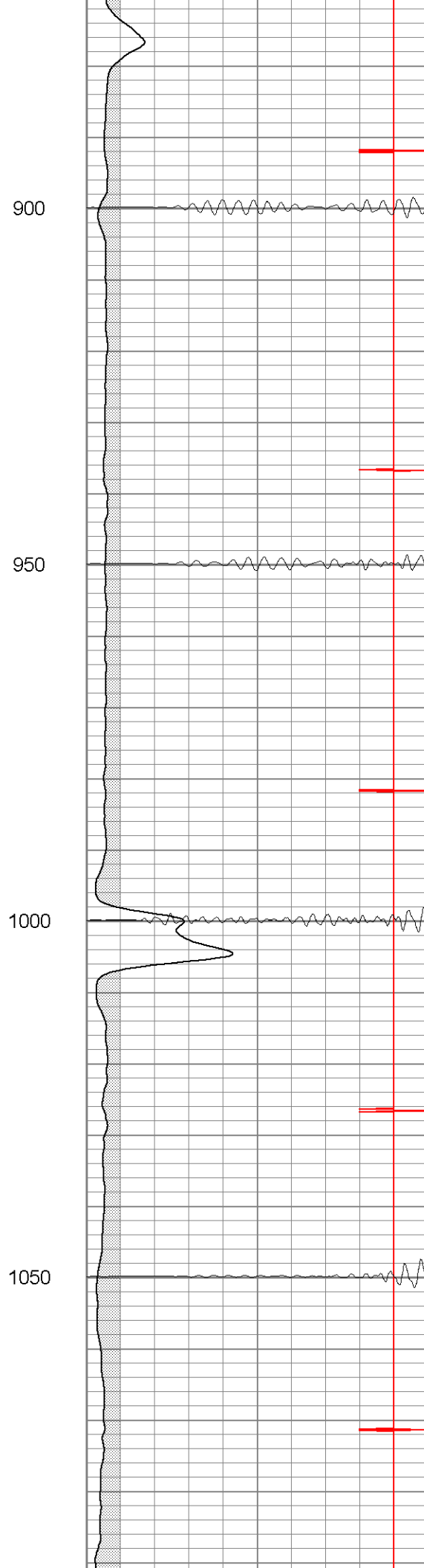
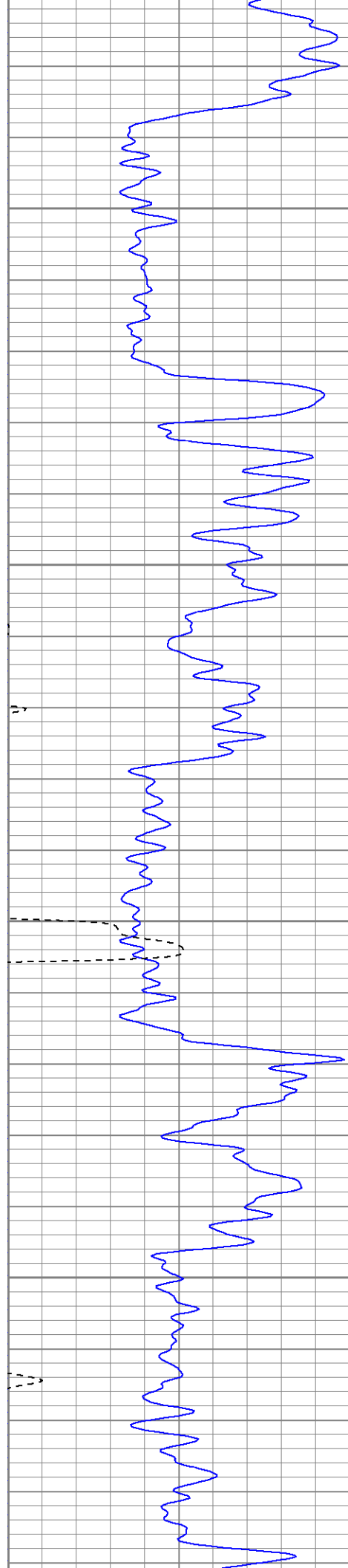
700

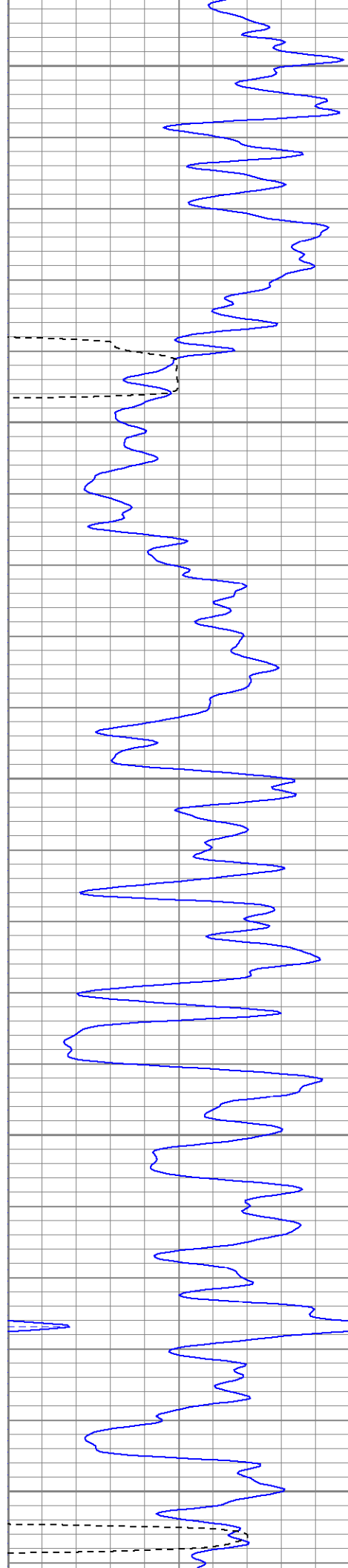
750

800

850







1100

1150

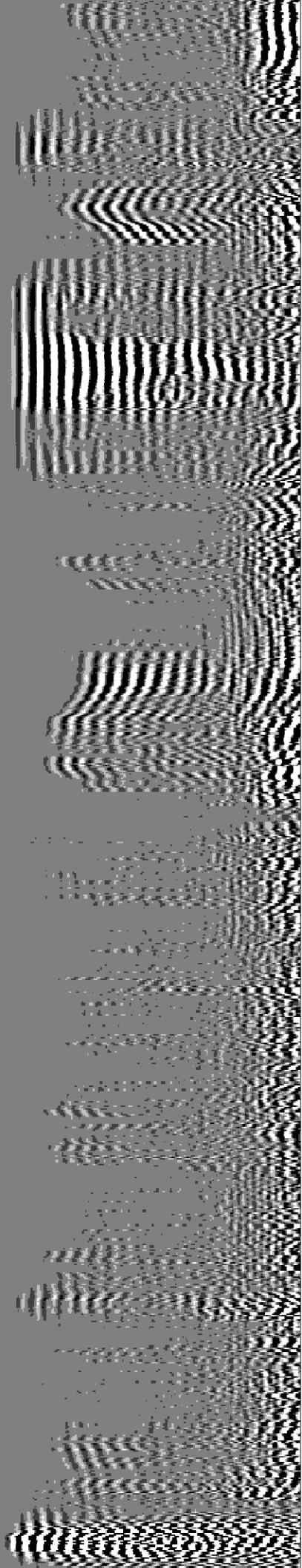
1200

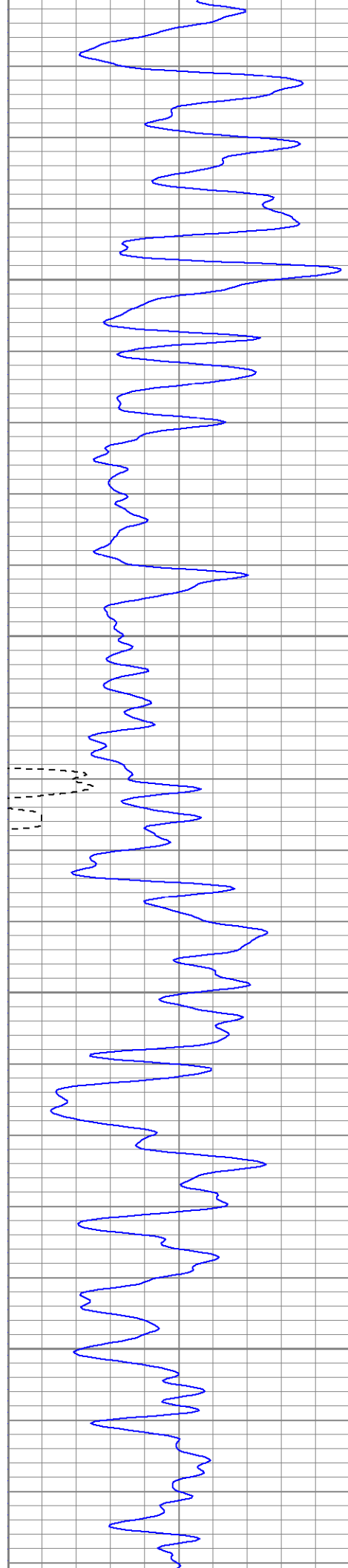
1250

1300



ECP



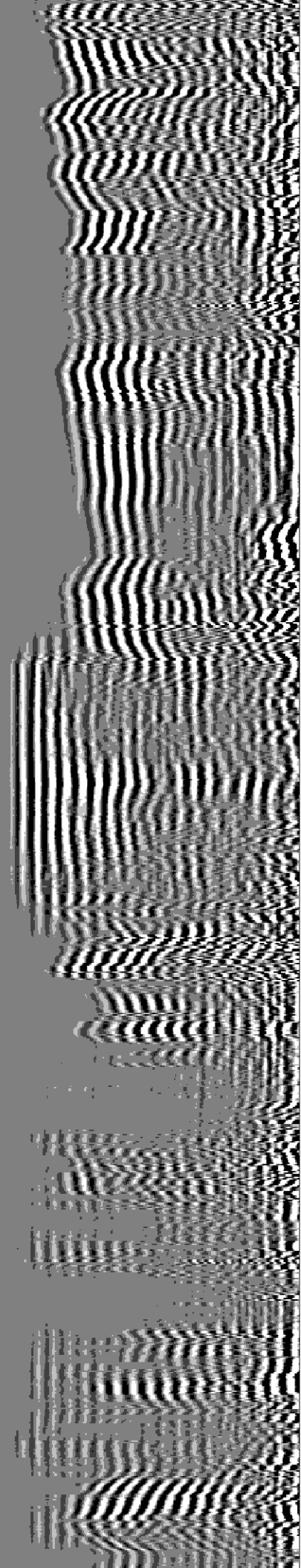
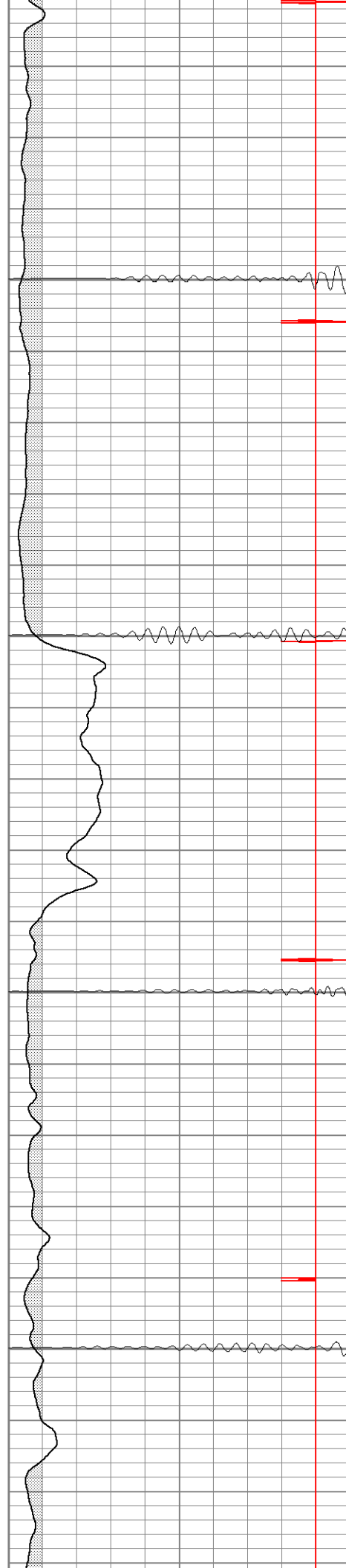


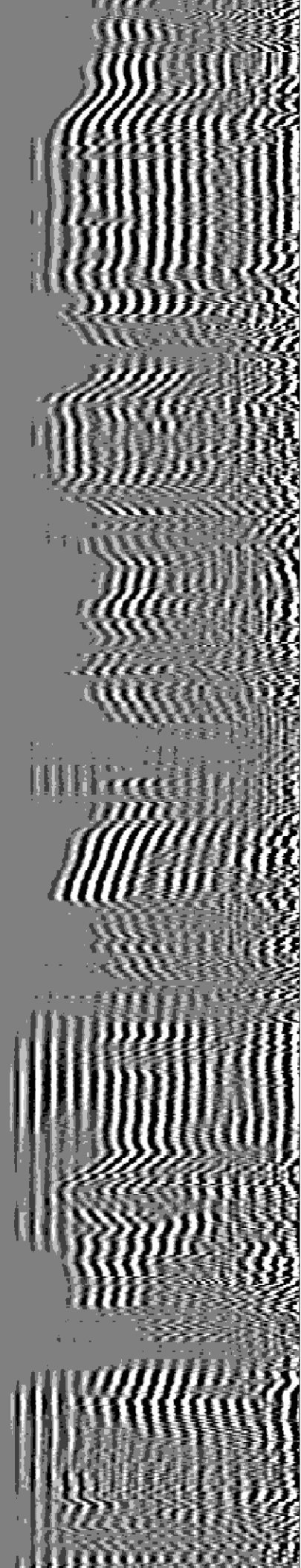
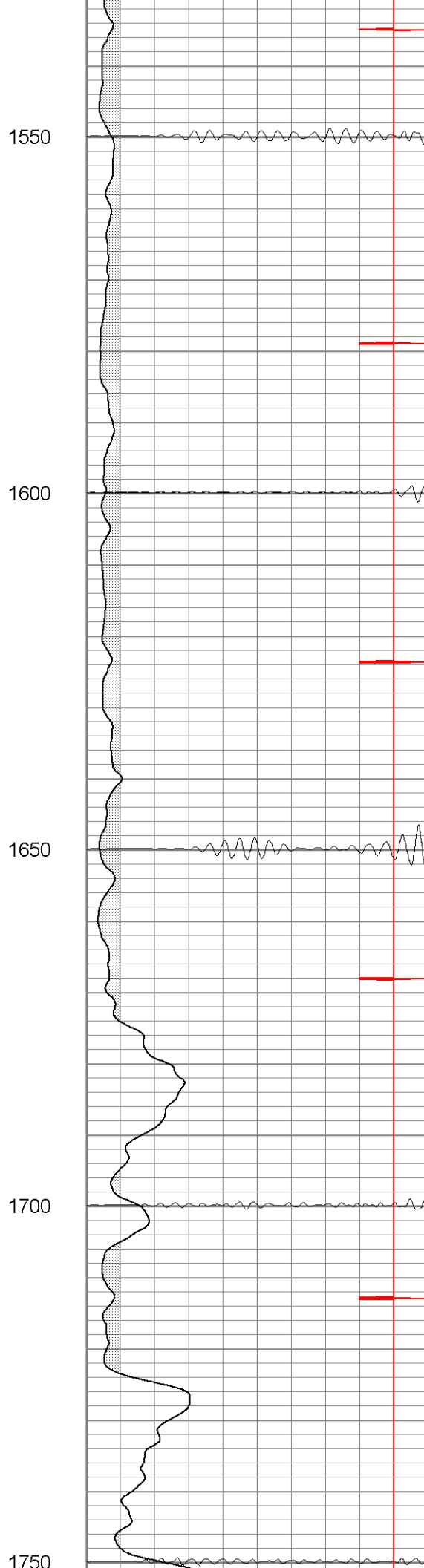
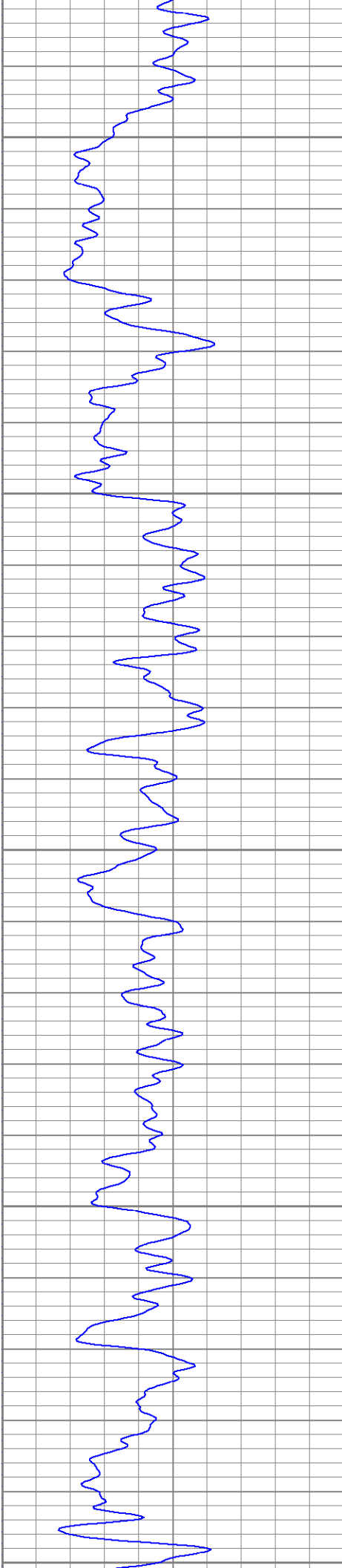
1350

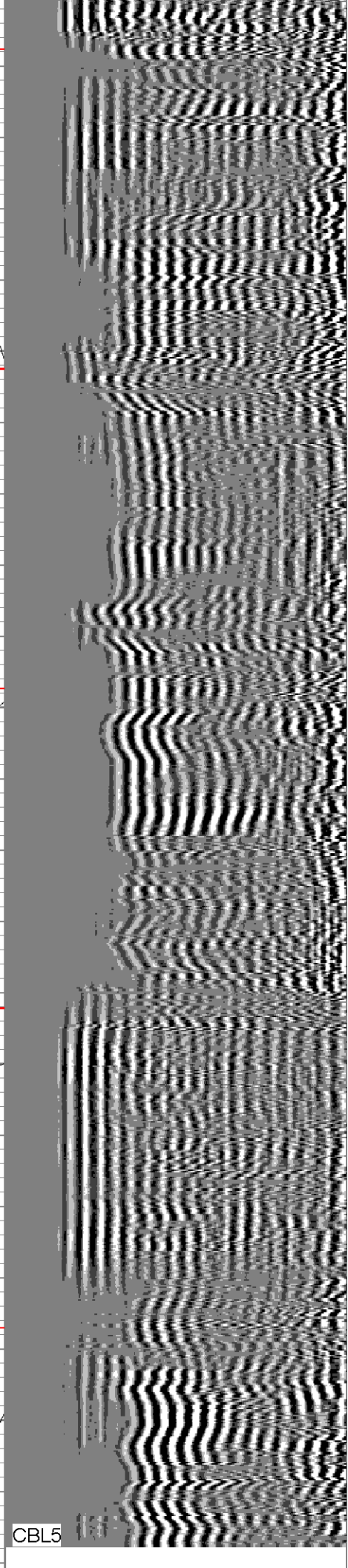
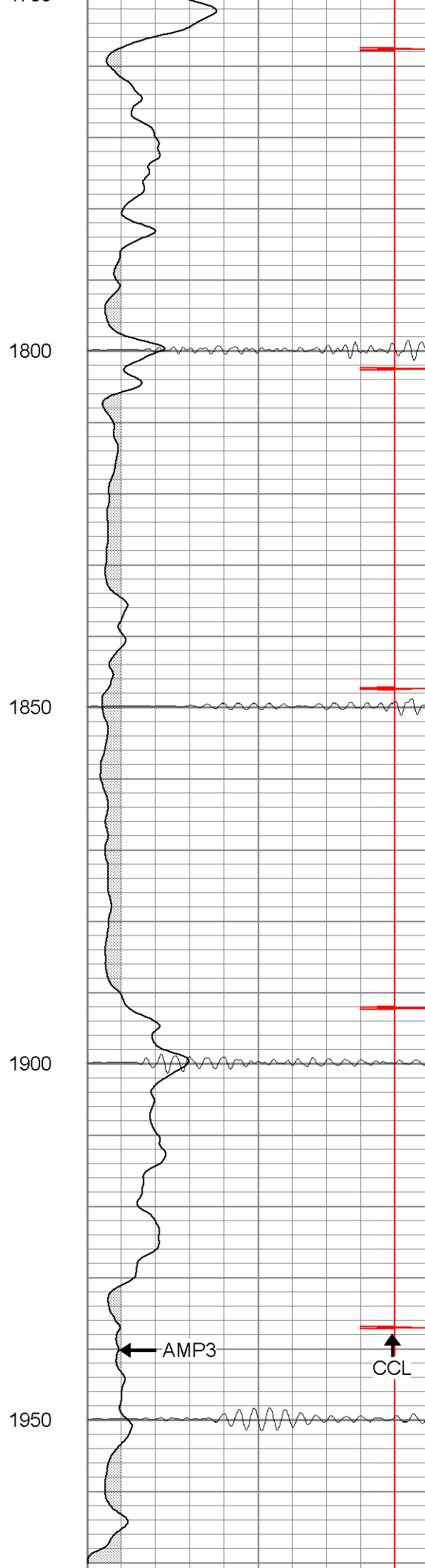
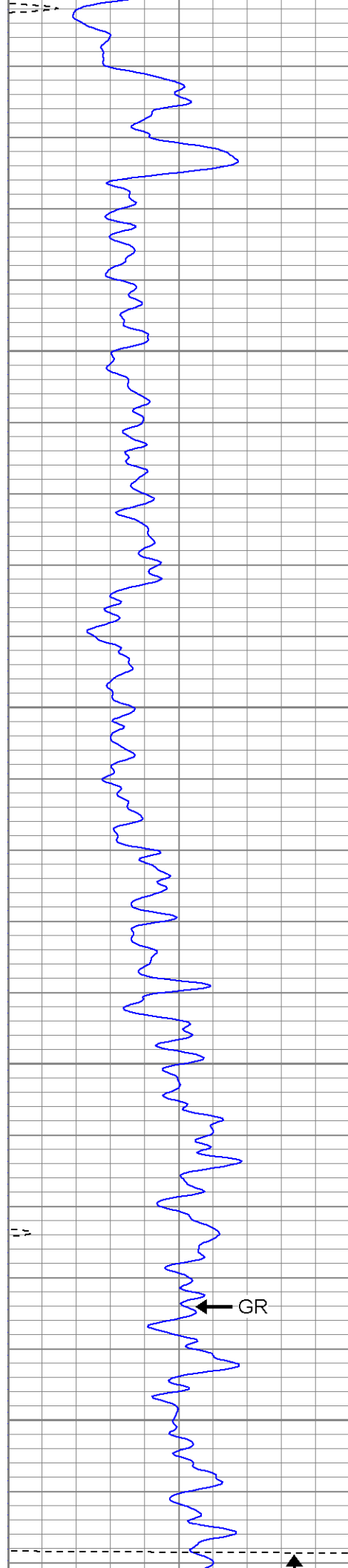
1400

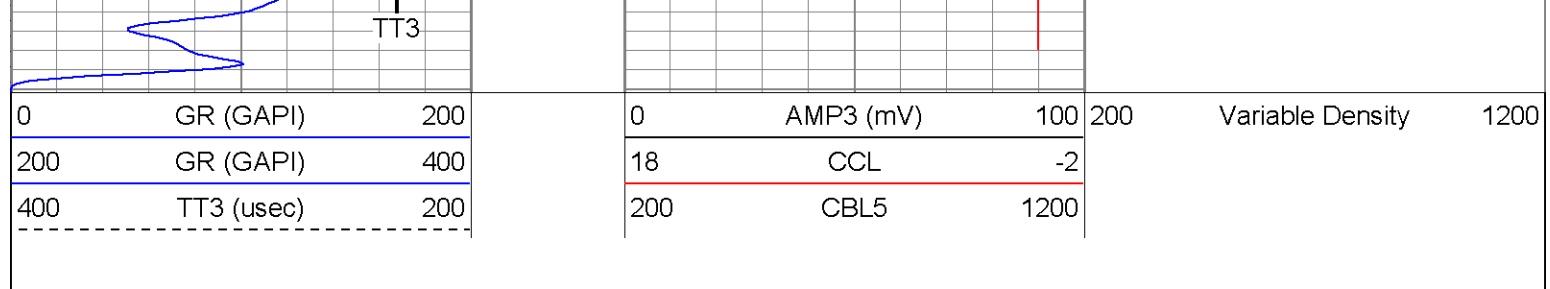
1450

1500







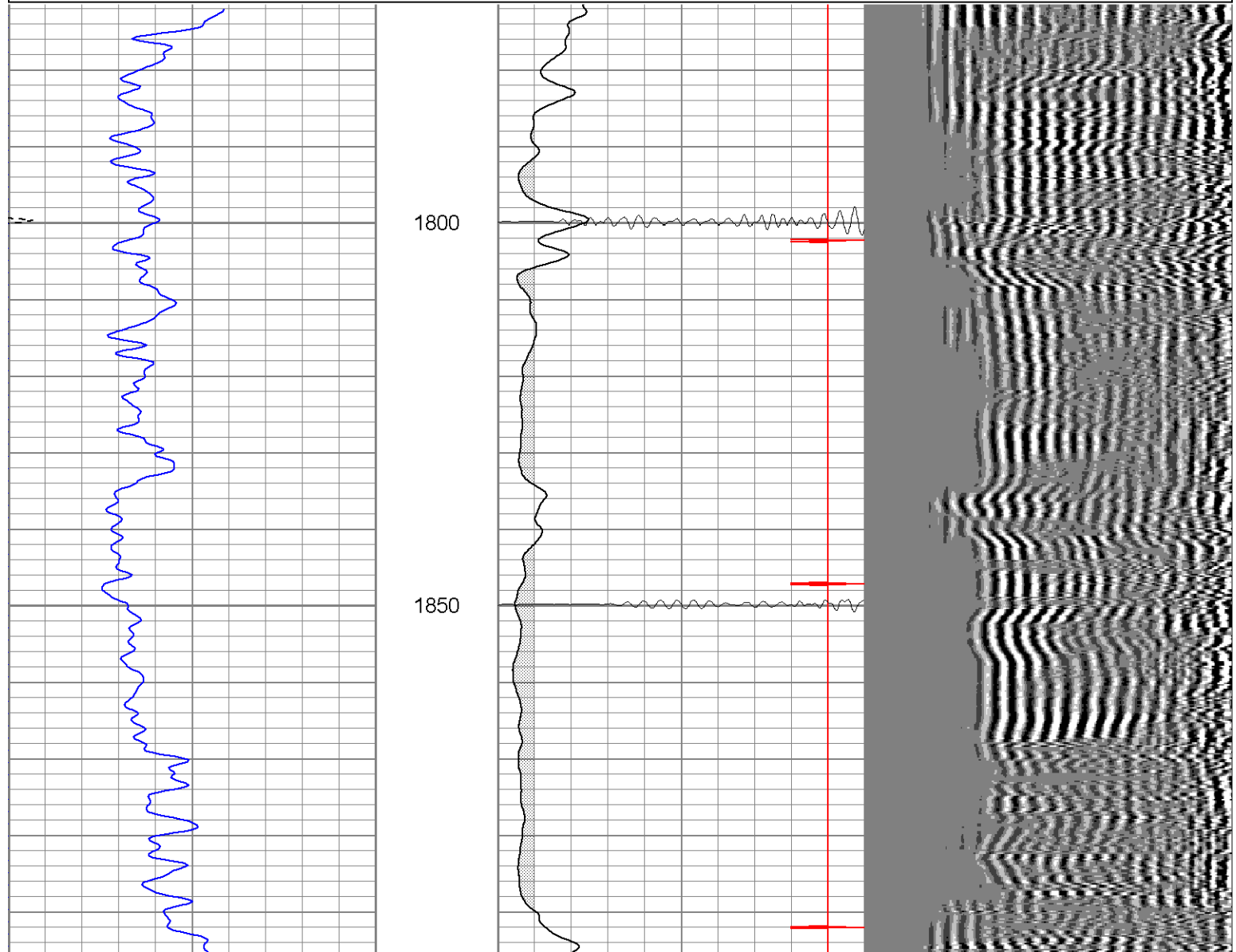
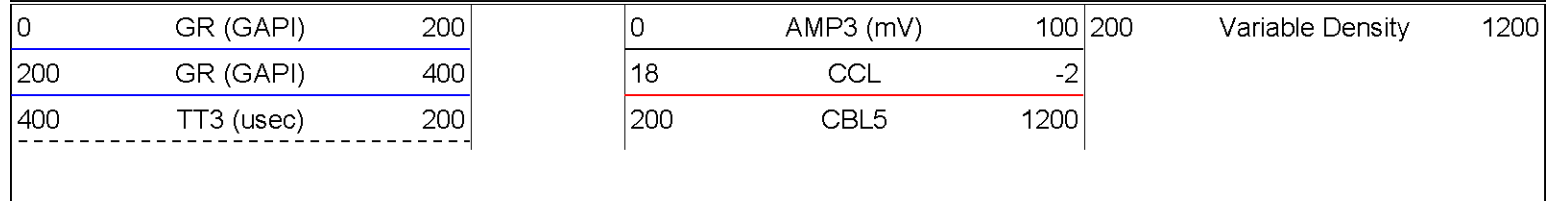


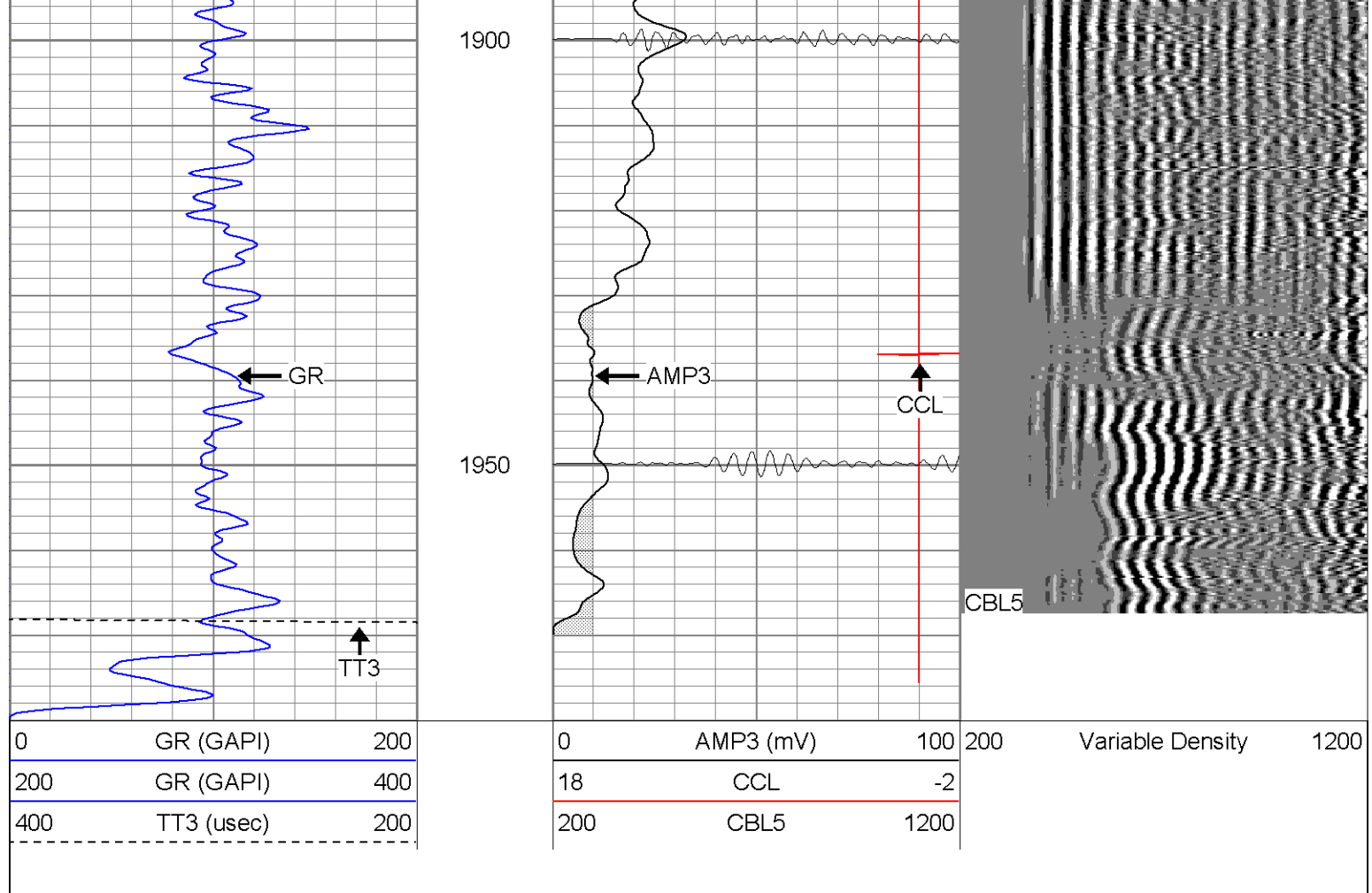


SUPERIOR
Black Lick, Pa.
Mercer, Pa.
Wooster, Oh.
Cleveland, Ok.
Trinidad, Co.

Repeat Section (0 PSI)

Database File: ac24082707b.db
 Dataset Pathname: pass1.1
 Presentation Format: cblrt
 Dataset Creation: Wed Feb 07 09:57:01 2007 by Calc Open-Cased 060407
 Charted by: Depth in Feet scaled 1:240





Calibration Report

Database File: ac24082707b.db
 Dataset Pathname: pass1
 Dataset Creation: Wed Feb 07 08:22:25 2007 by Log Open-Cased 060407

Gamma Ray Calibration Report

Serial Number: Titan2.75
 Tool Model: 2.75
 Performed: Fri Jan 26 10:30:12 2007

Calibrator Value: 200.0 GAPI

Background Reading: 40.0 cps
 Calibrator Reading: 240.0 cps

Sensitivity: 1.1000 GAPI/cps

Cement Bond Log Calibration Report

Serial Number: Titan4
 Tool Model: 4
 Performed: Fri Jan 26 11:14:49 2007

Depth: 1054.62 ft
 Casing Diameter: 5.5 in

3' Spacing 5' Spacing

Signal Zero: 0 1 mV
 Calibrated Amplitude: 85 85 mV
 Reading at Signal Zero: 0.00161133 0.0143555 V
 Reading in Free Pipe: 1.27 1.65081 V

51.3306
0.263125

Sensor	Offset (ft)	Schematic	Description	Len (ft)	OD (in)	Wt (lb)
CHD	20.38		CHD-None (0)	0.75	1.50	5.00
CENT	19.63		CENT-X (2)	3.00	1.69	25.00
WVF5	12.82		CBL-4 (Titan4)	8.15	2.25	110.00
WVF3	11.82					
CENT	8.48		CENT-X (1)	3.00	1.69	25.00
CCL	4.27		CCL-2.75 (Titan2.75)	1.71	2.75	15.00
GR	1.42		GR-2.75 (Titan2.75) Two Point	3.77	2.75	25.00
		Dataset: ac24082707b.db: field/well/run1/pass1 Total Length: 20.38 ft Total Weight: 205.00 lb O.D. 2.75 in				