



SUPERIOR
WELL SERVICES
Black Lick, Pa.
Mercer, Pa.
Wooster, Oh.
Cleveland, Ok.
Trinidad, Co.

Cement Bond Log

Company XTO Energy Inc.
Well Golden Eagle 29-13
Field Purgatoire River
County Las Animas State Colorado

Company XTO Energy Inc.
Well Golden Eagle 29-13
Field Purgatoire River
County Las Animas
State Colorado

Location: API # : 05 071 09110 00
1033' FSL & 268 FWL
SEC 29 TWP 33S RGE 67W
Permanent Datum Ground Level Elevation 7388'
Log Measured From Ground Level
Drilling Measured From Ground Level
Other Services
Temp
PSI
Control
Elevation
K.B. -----
D.F. -----
G.L. 7388'

Date 3-7-07

Run Number	One		
Depth Driller	2005'		
Depth Logger	1930'		
Bottom Logged Interval	1926'		
Top Log Interval	Surface		
Open Hole Size	8 5/8		
Type Fluid	Water		
Density / Viscosity	///		
Max. Recorded Temp.	135 DEGF		
Estimated Cement Top	Surface		
Time Well Ready	ROA		
Time Logger on Bottom	12:45		
Equipment Number	T0702		
Location	Trinidad		
Recorded By	Larson		
Witnessed By	M. Polley		

Borehole Record				Tubing Record			
Run Number	Bit	From	To	Size	Weight	From	To
Casing Record	Size		Wgt/Ft		Top		Bottom
Surface String	8 5/8"				0		700'
Prot. String							
Production String	5.5"				0		NA
Liner							

<<< Fold Here >>>

All interpretations are opinions based on inferences from electrical or other measurements and we cannot and do not guarantee the accuracy or correctness of any interpretation, and we shall not, except in the case of gross or willful negligence on our part, be liable or responsible for any loss, costs, damages, or expenses incurred or sustained by anyone resulting from any interpretation made by any of our officers, agents or employees. These interpretations are also subject to our general terms and conditions set out in our current Price Schedule.

Comments

Main Pass Ran Under 1000 PSIG

Turn At Bosque 4mi past weston, up Ciruela Canyon take first right, first location

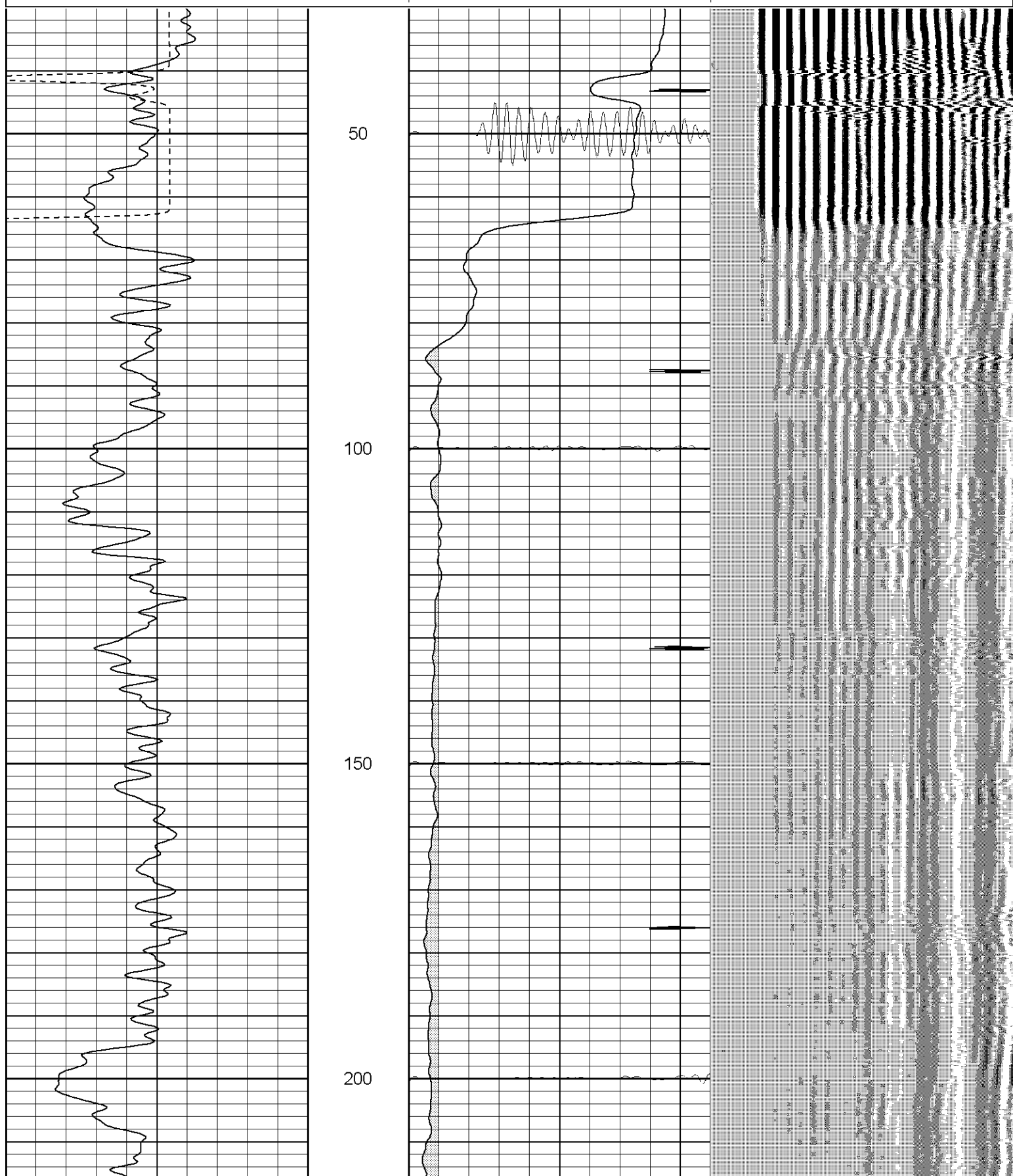


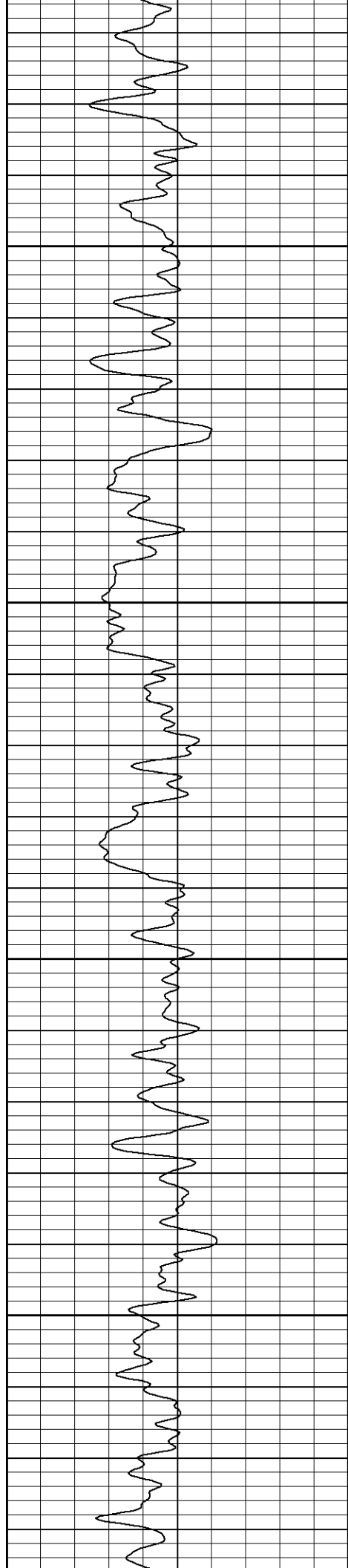
SUPERIOR
Black Lick, Pa.
Mercer, Pa.
Wooster, Oh.
Cleveland, Ok.
Trinidad, Co.

Main Pass 1000 PSI

Database File: ge29133707cbl.db
Dataset Pathname: pass4
Presentation Format: cblrt
Dataset Creation: Wed Mar 07 14:23:47 2007 by Log Warrior 7.0 STD Cas
Charted by: Depth in Feet scaled 1:240

0	GR (GAPI)	200	0	AMP3 (mV)	100	200	Variable Density	1200
400	TT3 (usec)	200	18	CCL	-2			
-----			100	CBL5	1200			



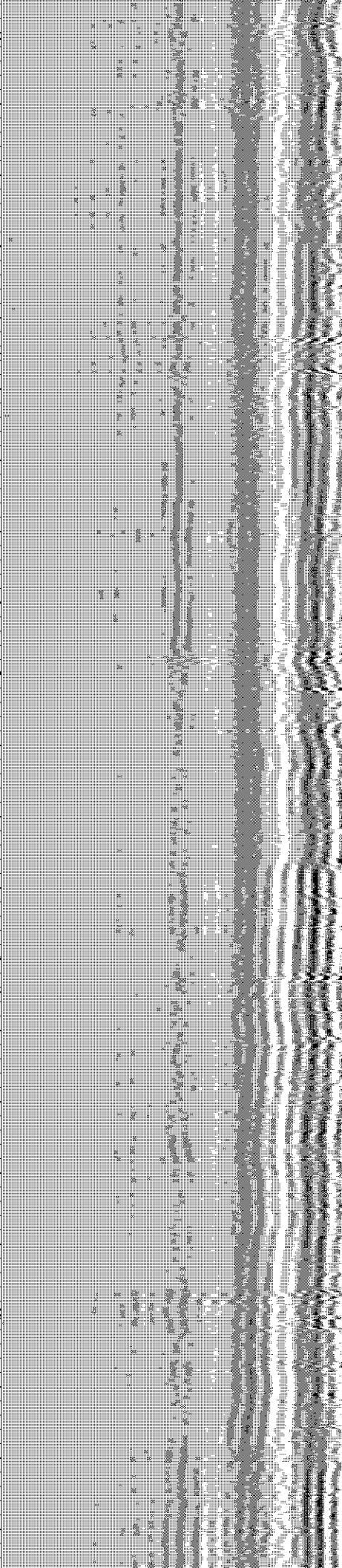
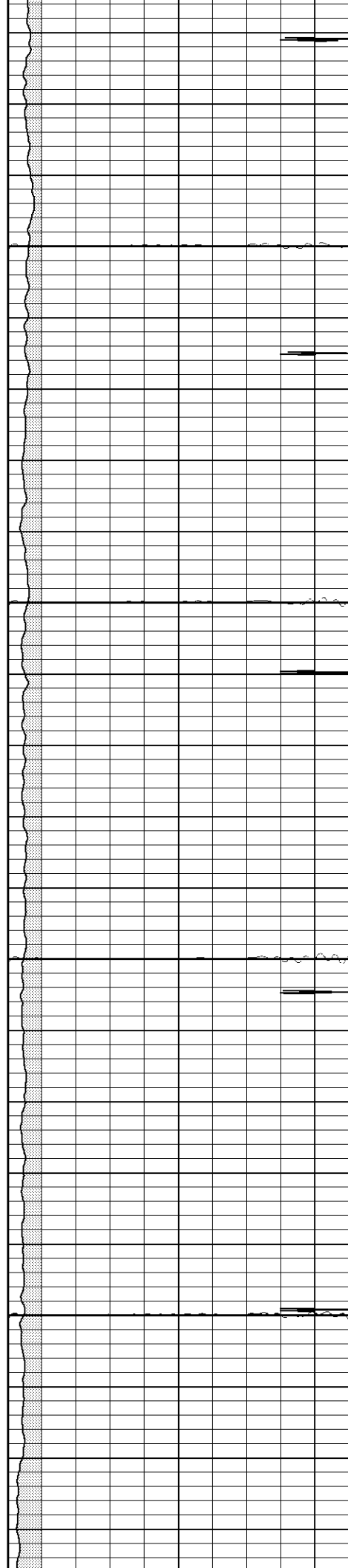


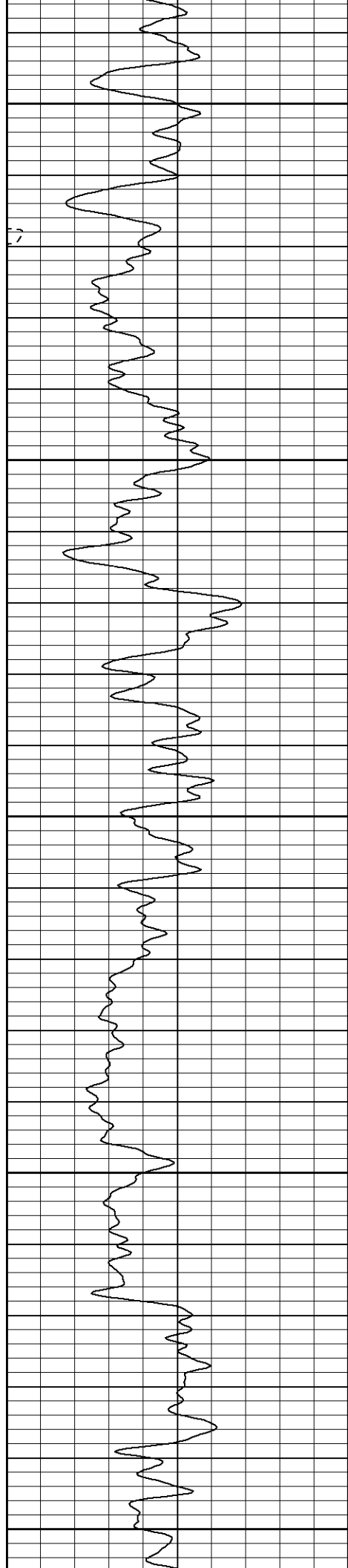
250

300

350

400





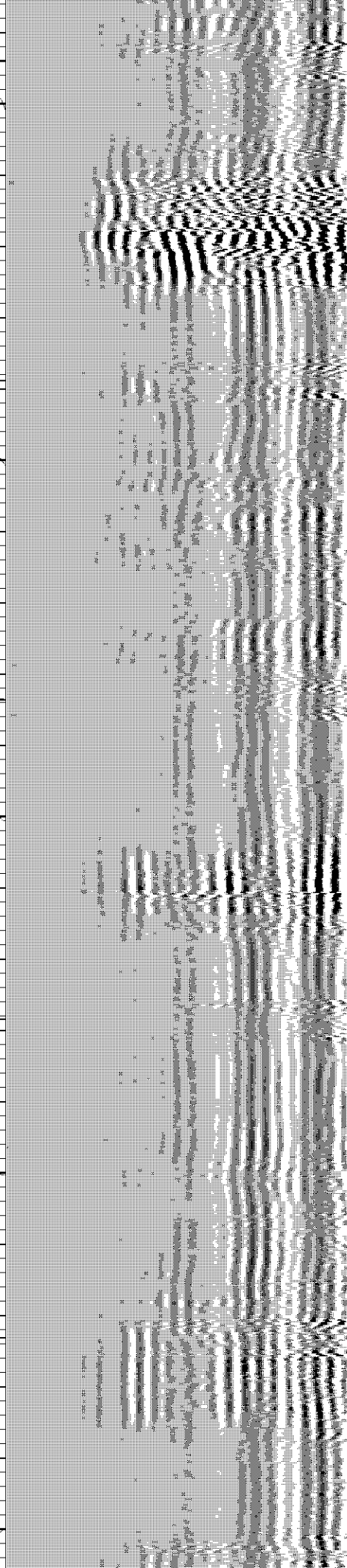
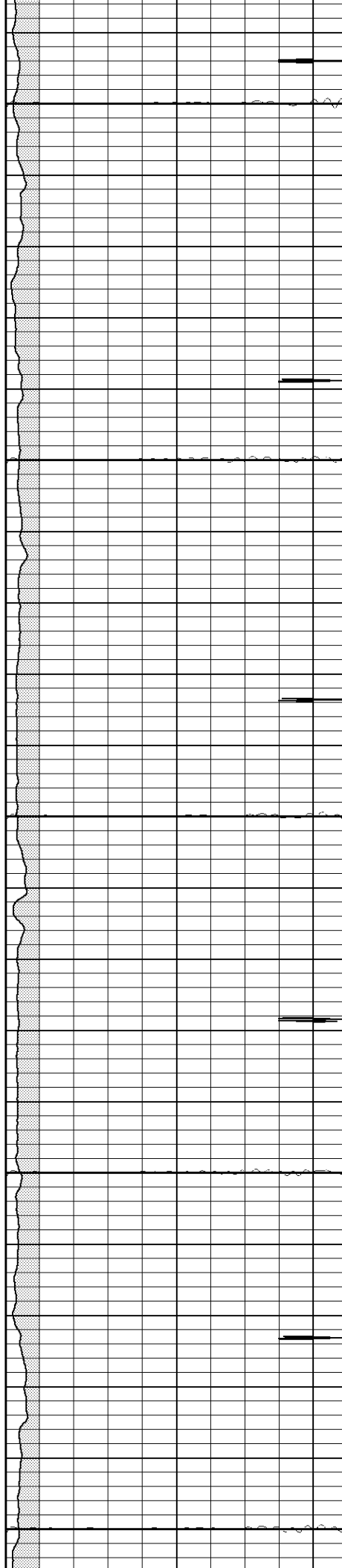
450

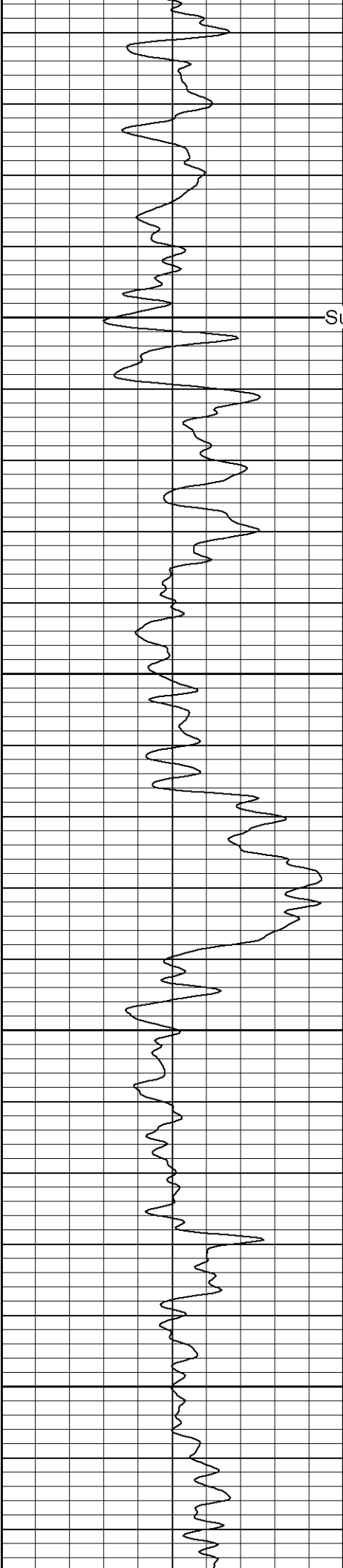
500

550

600

650



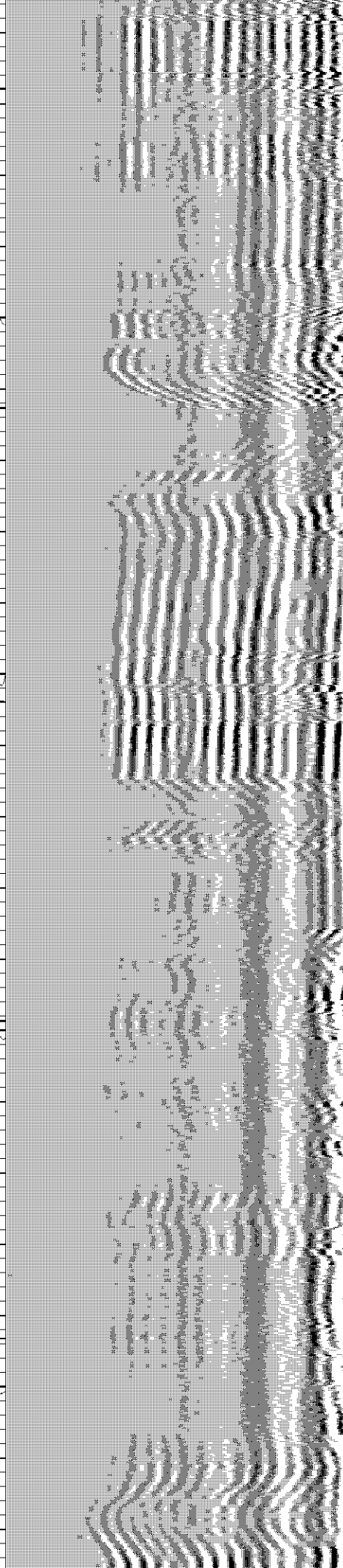
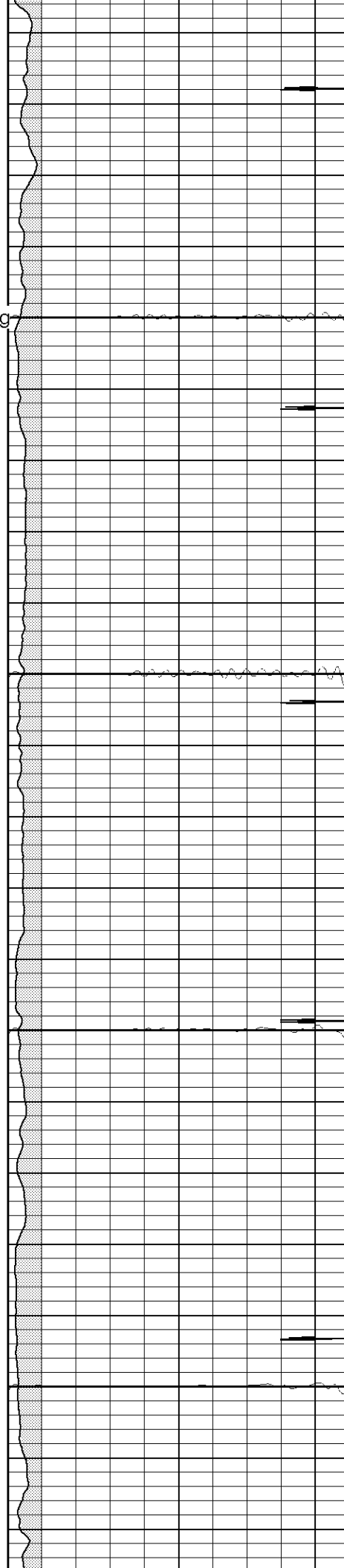


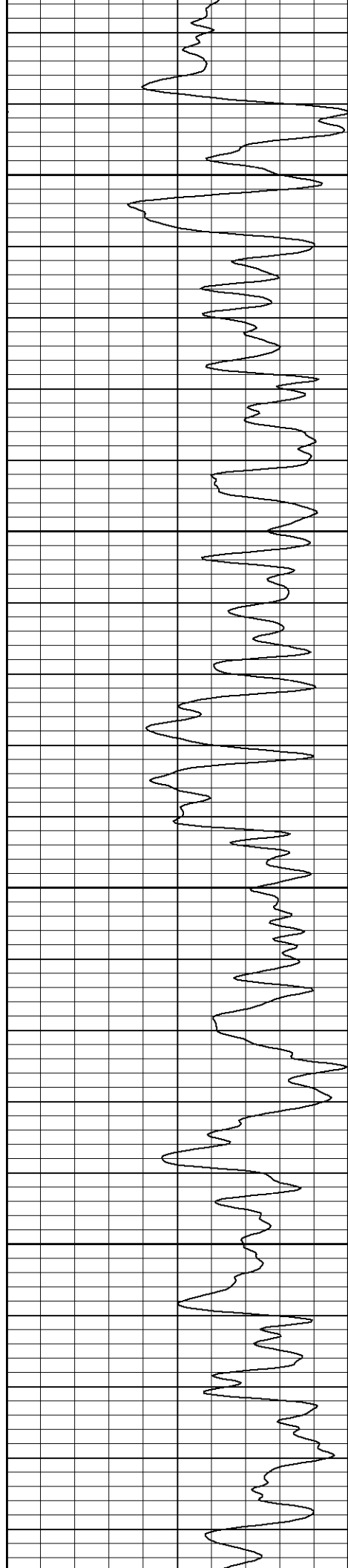
Surface Casing

750

800

850



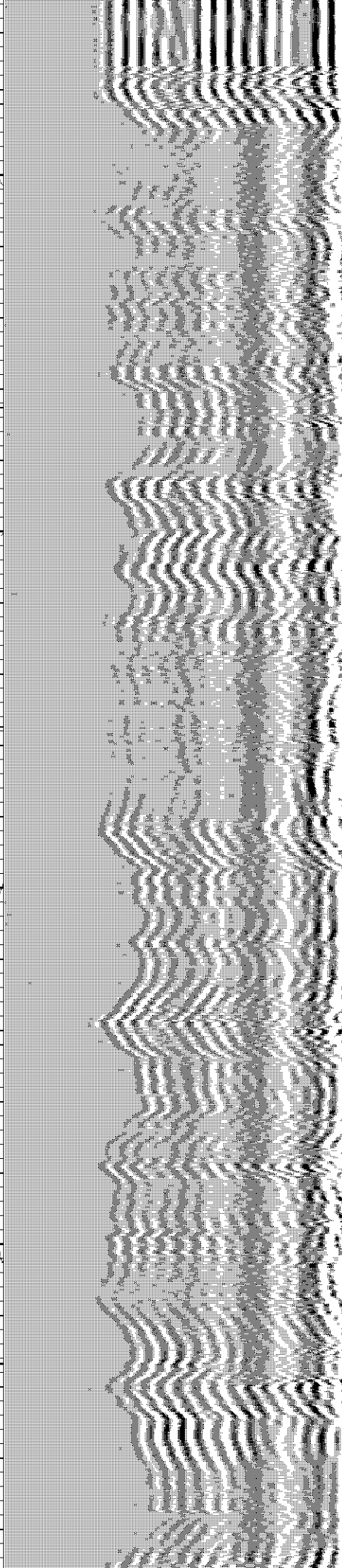
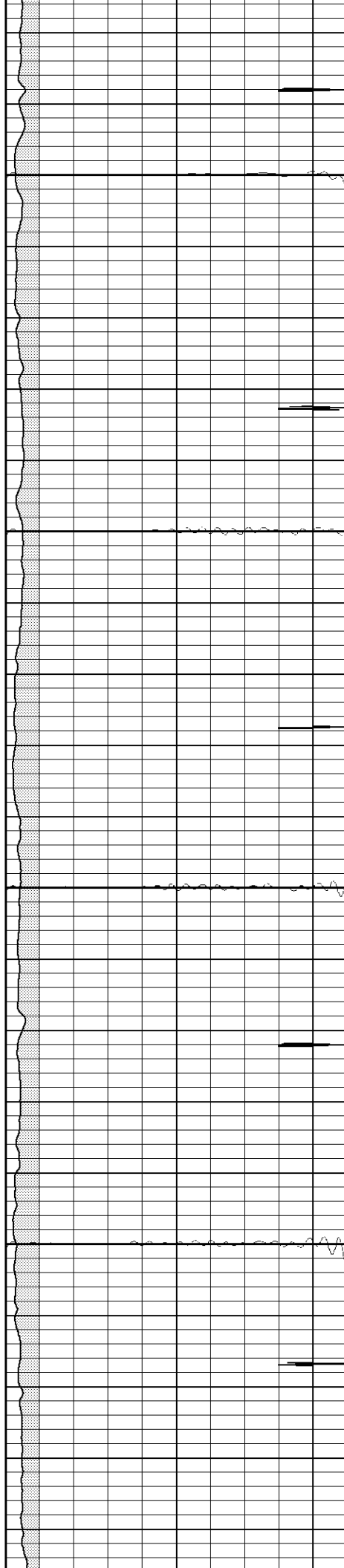


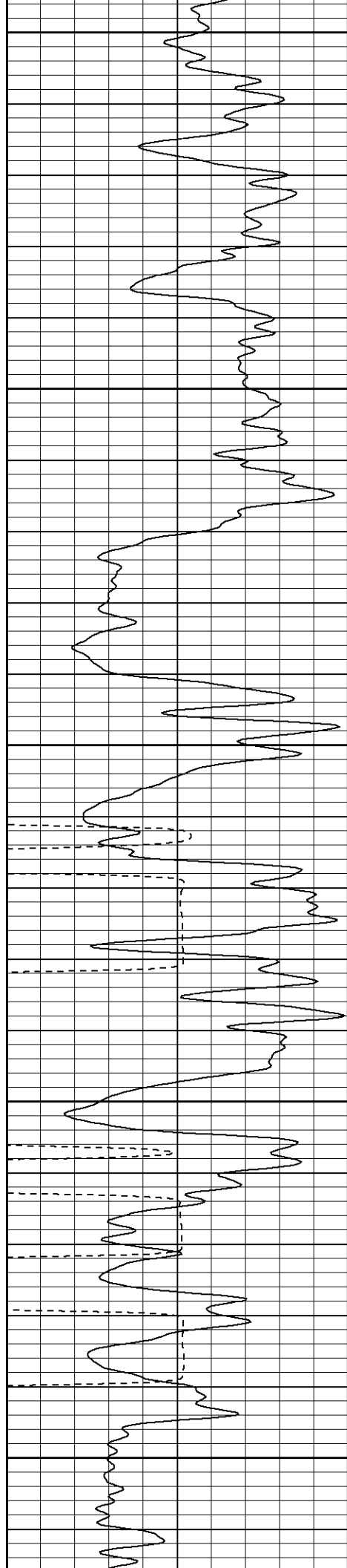
900

950

1000

1050





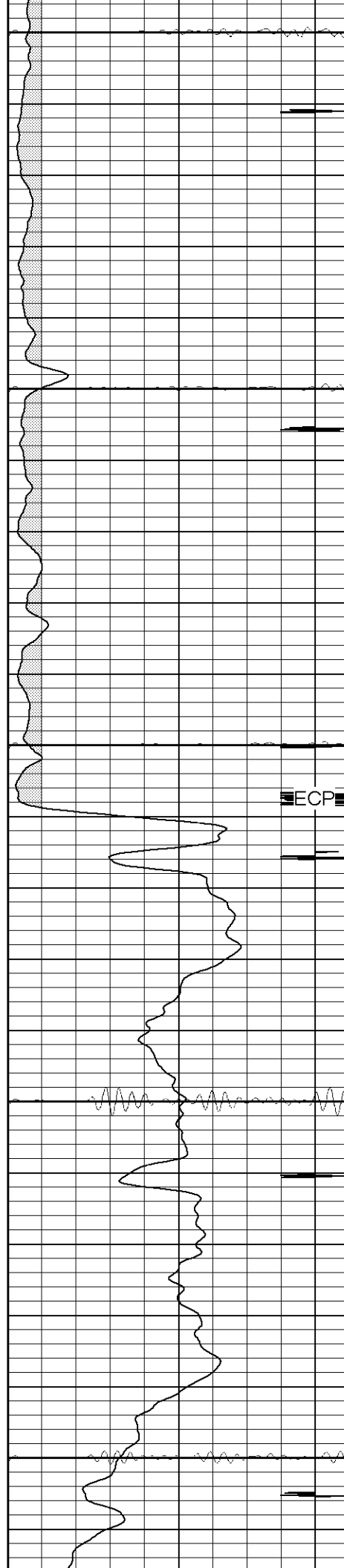
1100

1150

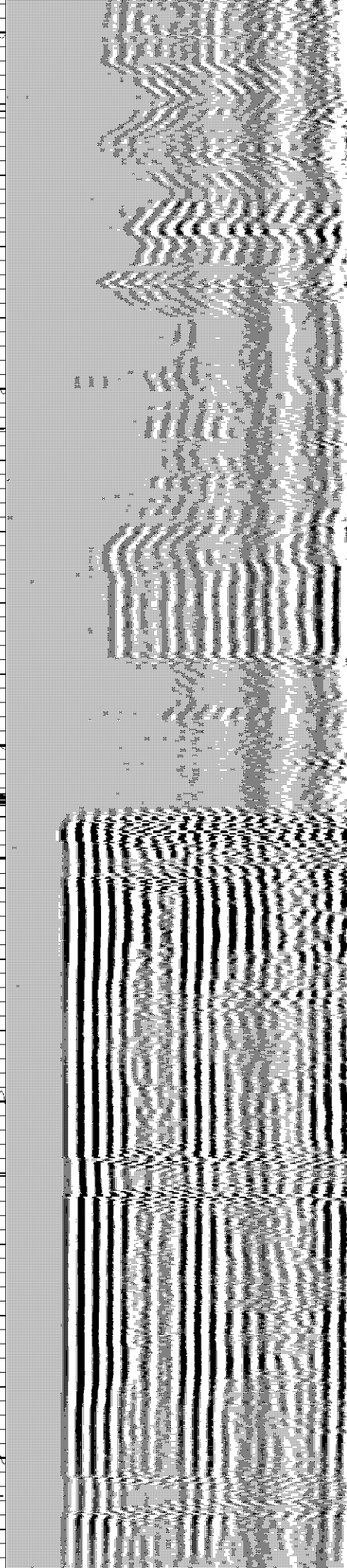
1200

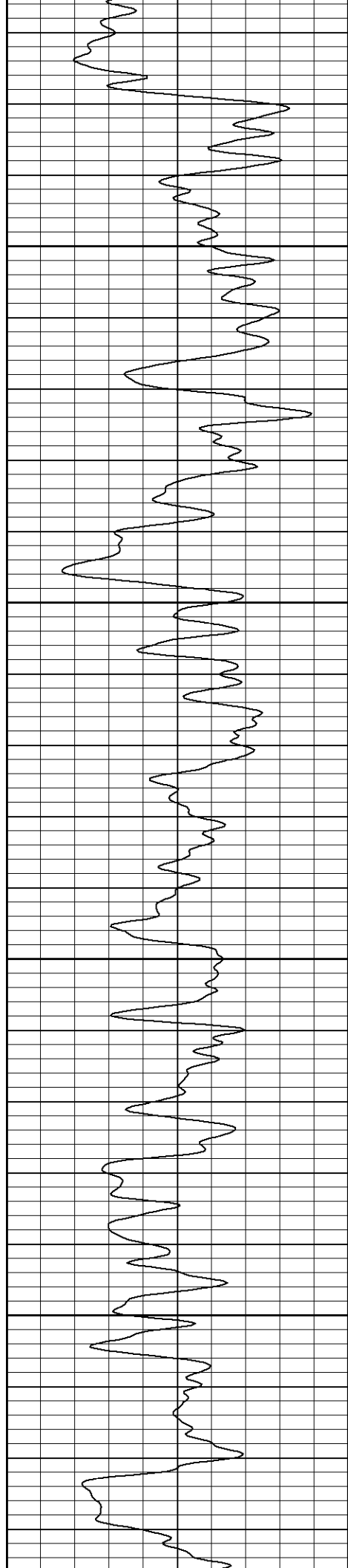
1250

1300



ECP



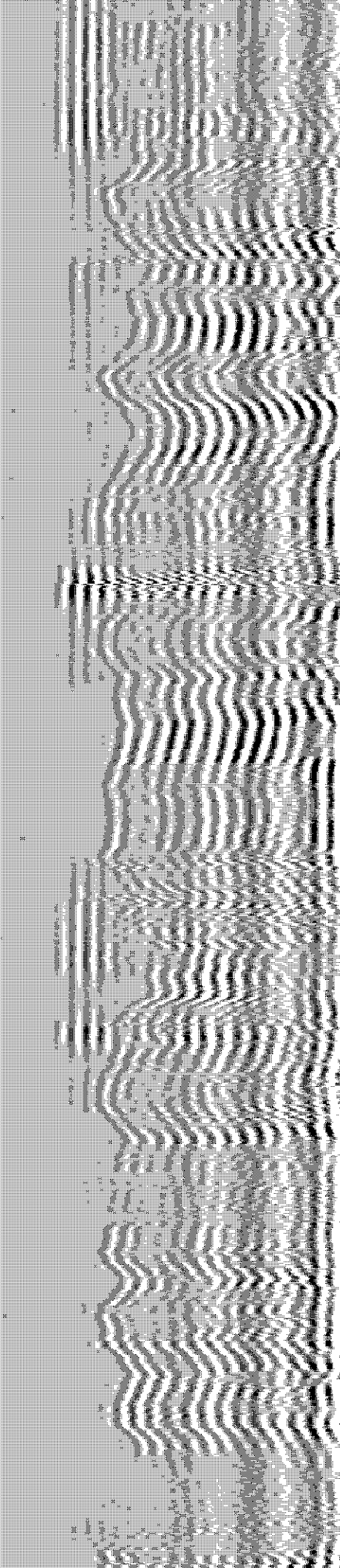
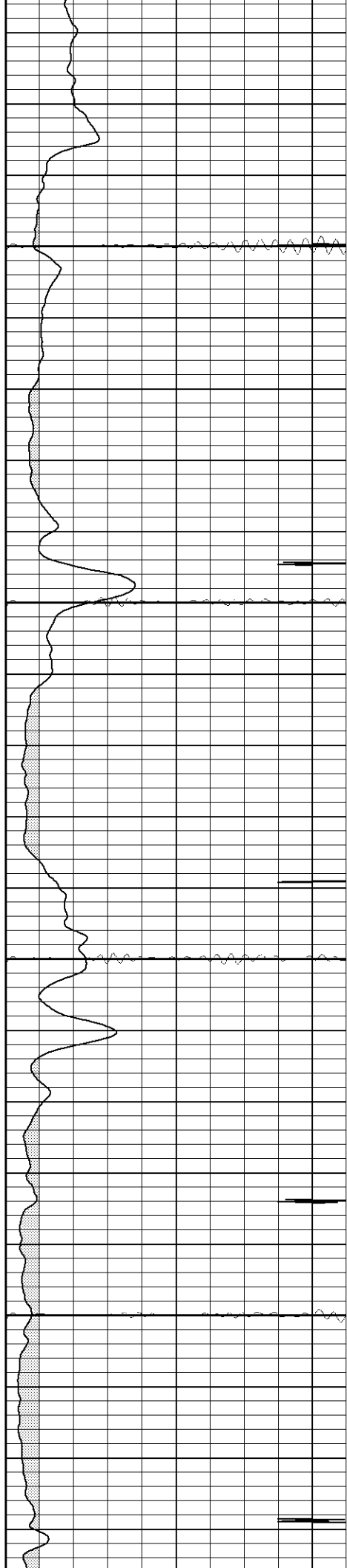


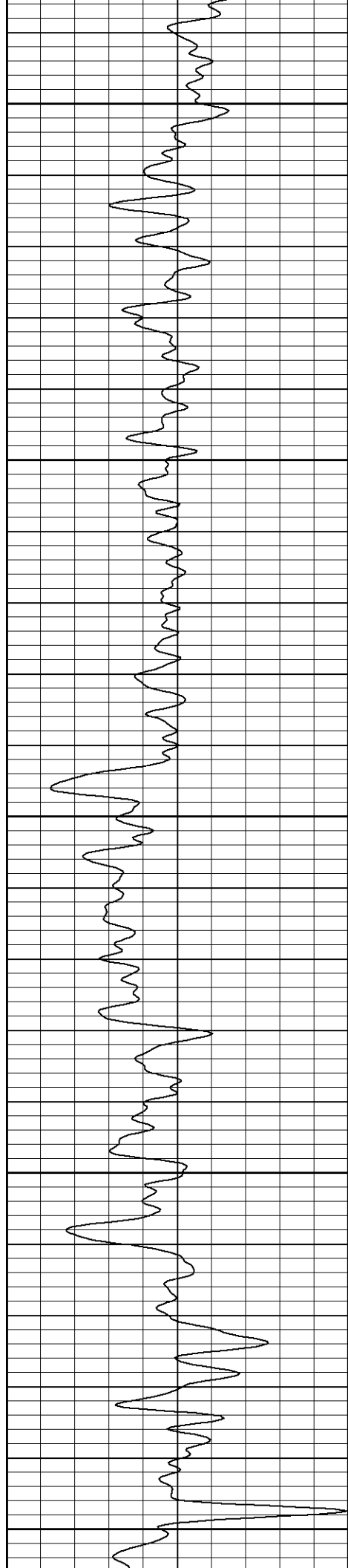
1350

1400

1450

1500





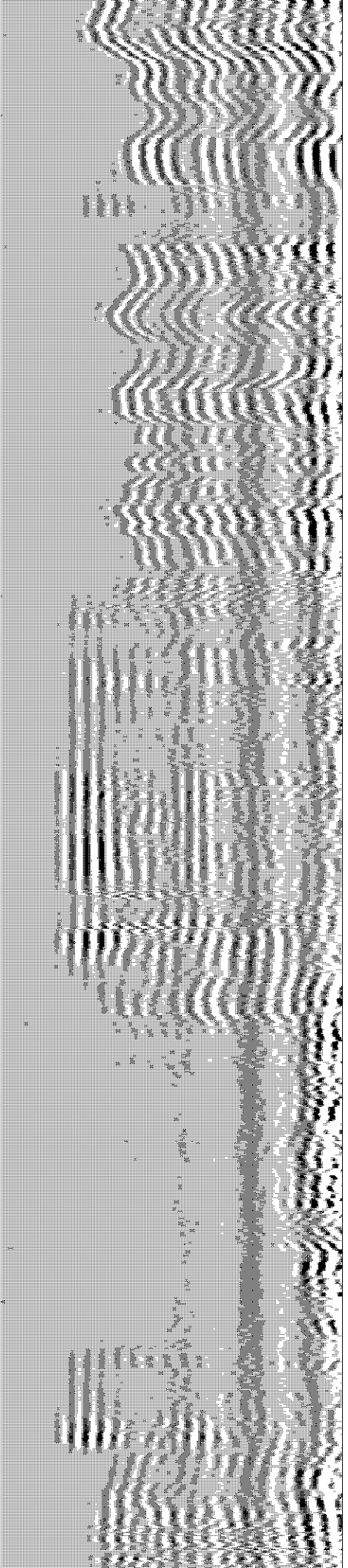
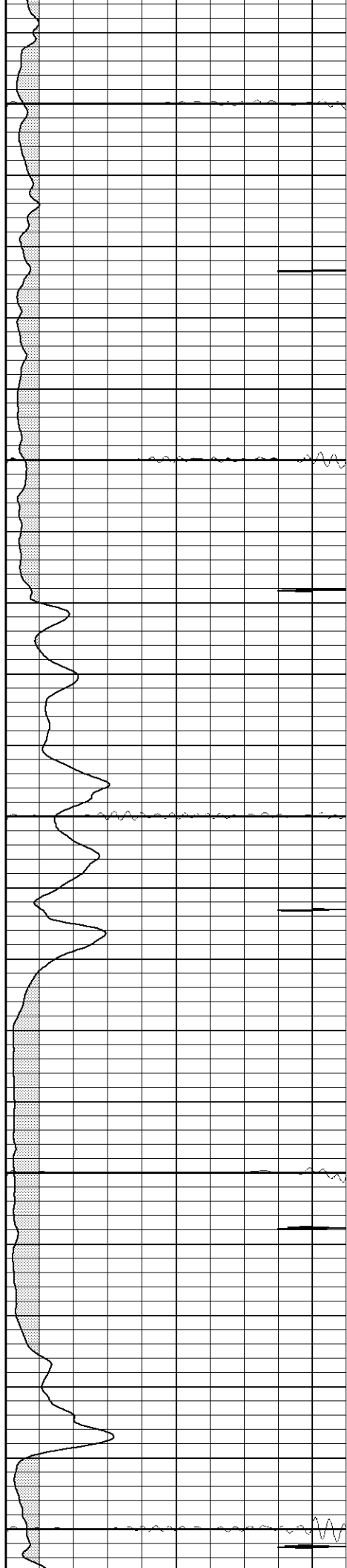
1550

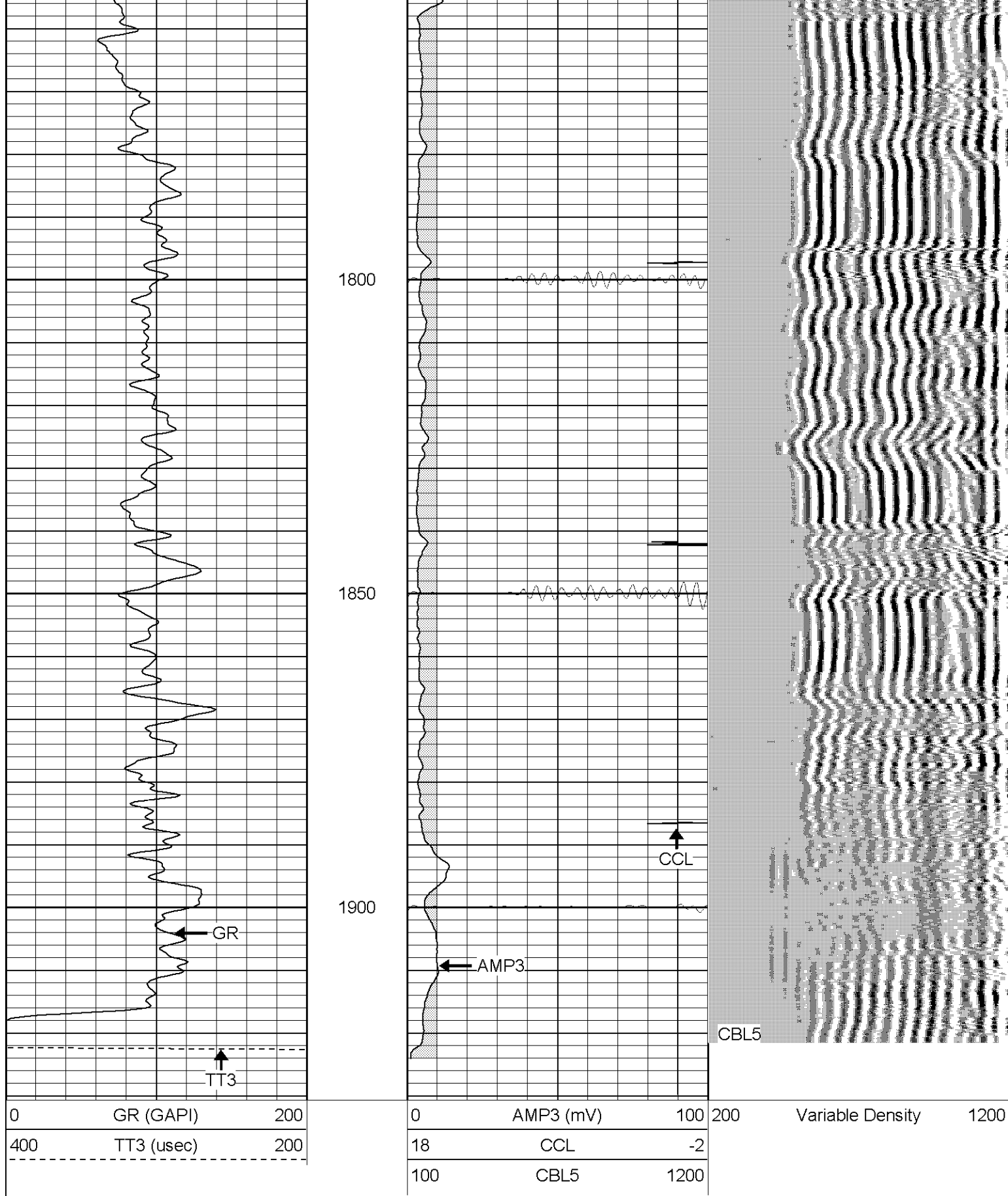
1600

1650

1700

1750





SUPERIOR

Black Lick, Pa.
Mercer, Pa.
Wooster, Oh.
Cleveland, Ok.
Trinidad, Co.

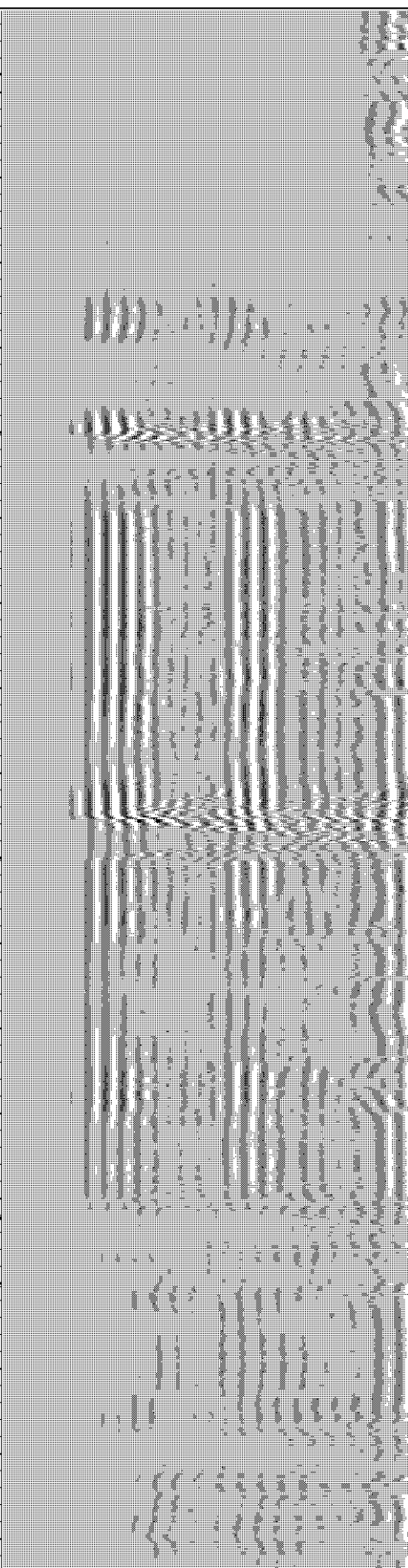
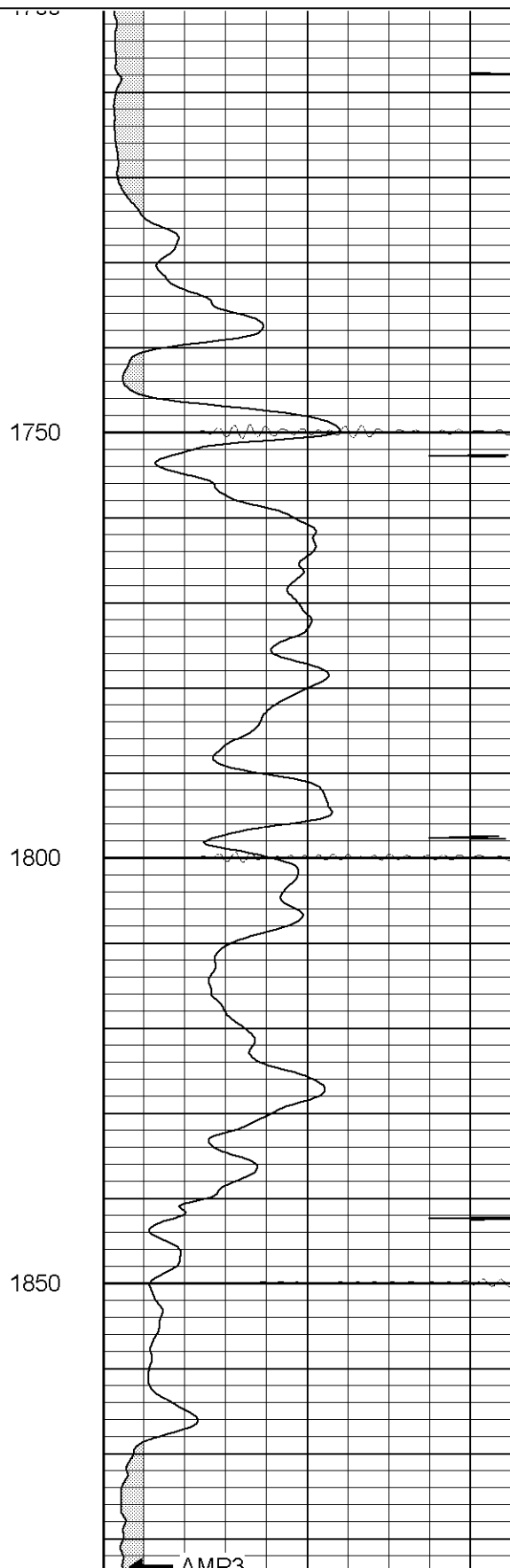
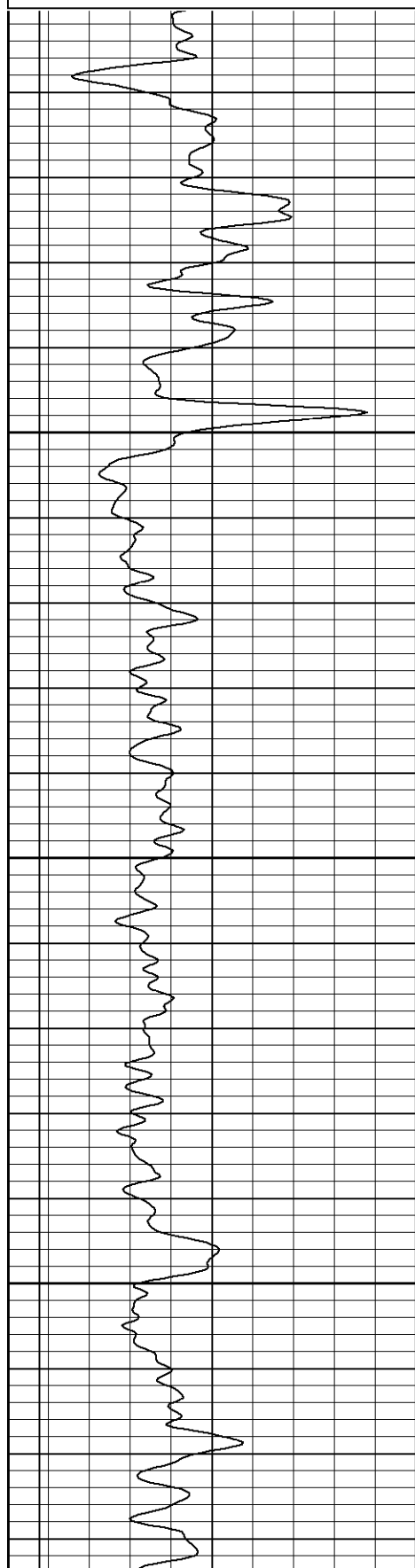
Repeat Pass

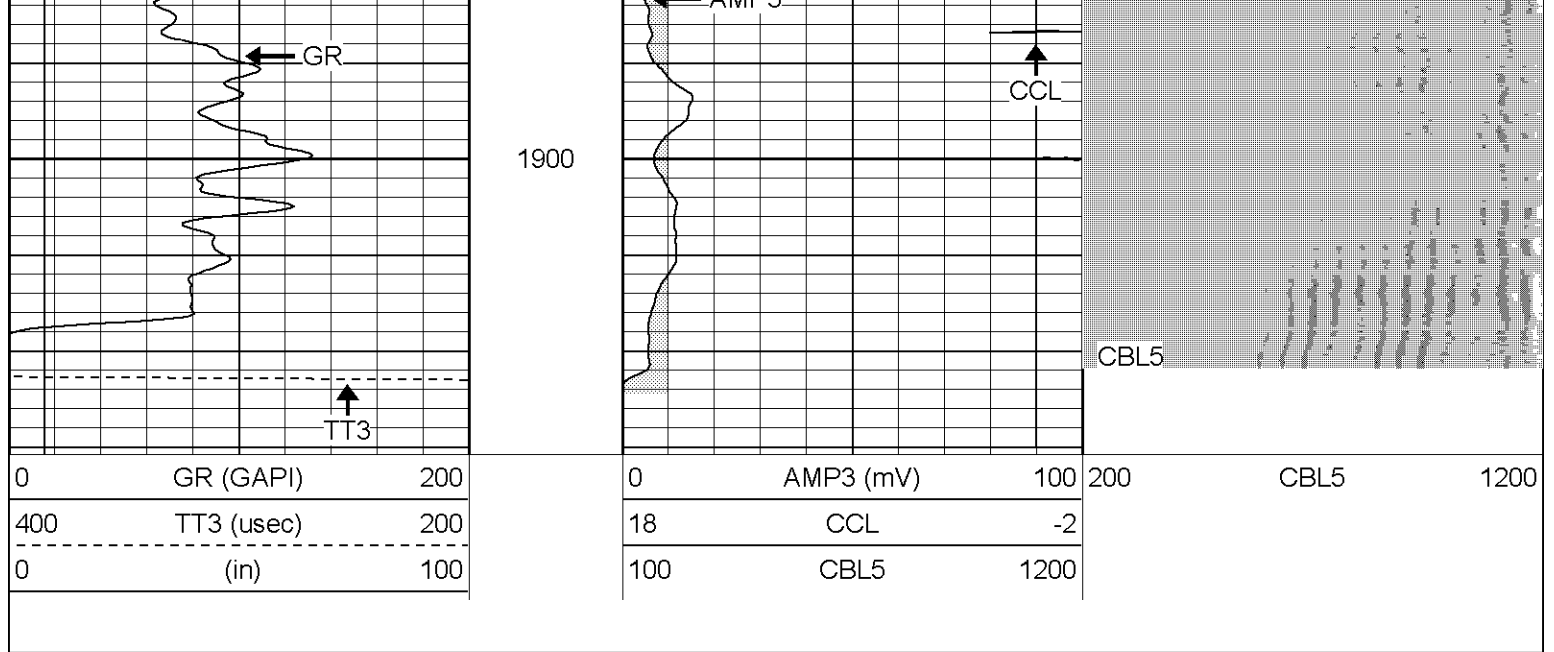
Dataset Pathname: pass2..5
Presentation Format: cblrt
Dataset Creation: Wed Mar 07 15:22:38 2007 by Calc Warrior 7.0 STD Cas
Charted by: Depth in Feet scaled 1:240

0	GR (GAPI)	200
400	TT3 (usec)	200
0	(in)	100

0	AMP3 (mV)	100
18	CCL	-2
100	CBL5	1200

200 CBL5 1200





Cement Bond Log Calibration Report

Serial Number: Titan2
 Tool Model: T2
 Performed: Fri Mar 02 16:16:43 2007

Depth: 840.683 ft
 Casing Diameter: 5.5 in

3' Spacing 5' Spacing

Signal Zero: 0 0 mV
 Calibrated Amplitude: 85 85 mV
 Reading at Signal Zero: 0 0.022876 V
 Reading in Free Pipe: 0.35 1.32 V

Gain: 242.857 65.5296
 Offset: 0 -1.49905

Gamma Ray Calibration Report

Serial Number: Titan2
 Tool Model: T2
 Performed: Wed Oct 04 11:03:55 2006

Calibrator Value: 250.0 GAPI

Background Reading: 40.0 cps
 Calibrator Reading: 220.0 cps

Sensitivity: 1.2000 GAPI/cps

Sensor	Offset (ft)	Schematic	Description	Len (ft)	OD (in)	Wt (lb)
GR	13.40		GR-T2 (Titan2)	2.52	2.44	25.00
WVF5	9.24					
WVF3	8.24		CBL-T2 (Titan2)	7.23	2.25	110.00

CENT	4.91		3.00	3.00	25.00
CCL	0.70		1.91	2.75	15.00
<p>Dataset: /field/well/run1/_plots/_jobs_/cbl</p> <p>Total Length: 14.66 ft</p> <p>Total Weight: 175.00 lb</p> <p>O.D. 3.00 in</p>					