



SUPERIOR
Black Lick, Pa.
Mercer, Pa.
Wooster, Oh.
Cleveland, Ok.
Trinidad, Co.

CEMENT BOND GAMMA RAY LOG

Company		XTO Energy Inc.	
Well		Hill Ranch 26-11-2	
Field		Purgatorie River	
County		Las Animas	
State		CO	
Location:		API # : 05 071 09206 00 1401' FSL & 2120' FWL	
SEC 26 TWP 34S RGE 67W		Other Services Pressure Control	
Permanent Datum		Ground Level	
Log Measured From		Ground Level	
Drilling Measured From		Ground Level	
Elevation		7912'	
K.B. -----		D.F. -----	
G.L. 7912'			
Date	4-19-07		
Run Number	One		
Depth Driller	2550'		
Depth Logger	2447'		
Bottom Logged Interval	2445'		
Top Log Interval	Surface		
Open Hole Size	7 7/8"		
Type Fluid	Water		
Density / Viscosity	///		
Max. Recorded Temp.	///		
Estimated Cement Top	98'		
Time Well Ready	ROA		
Time Logger on Bottom	8:30AM		
Equipment Number	T0698		
Location	Trinidad		
Recorded By	J Sisneros		
Witnessed By	Mr. Ryan Rensink		
Borehole Record		Tubing Record	
Run Number	Bit	From	To
		Size	Weight
		From	To
Casing Record	Size	Wgt/Ft	Top
Surface String	8 5/8"		00
Prot. String			476'
Production String	5 1/2"		00
Liner			N/A

<<< Fold Here >>>

All interpretations are opinions based on inferences from electrical or other measurements and we cannot and do not guarantee the accuracy or correctness of any interpretation, and we shall not, except in the case of gross or willful negligence on our part, be liable or responsible for any loss, costs, damages, or expenses incurred or sustained by anyone resulting from any interpretation made by any of our officers, agents or employees. These interpretations are also subject to our general terms and conditions set out in our current Price Schedule.

Comments

Lorencito to Hill Ranch lease to top of hill, to white trash can, take right, stay right, first right, first drive through location, location on west end.



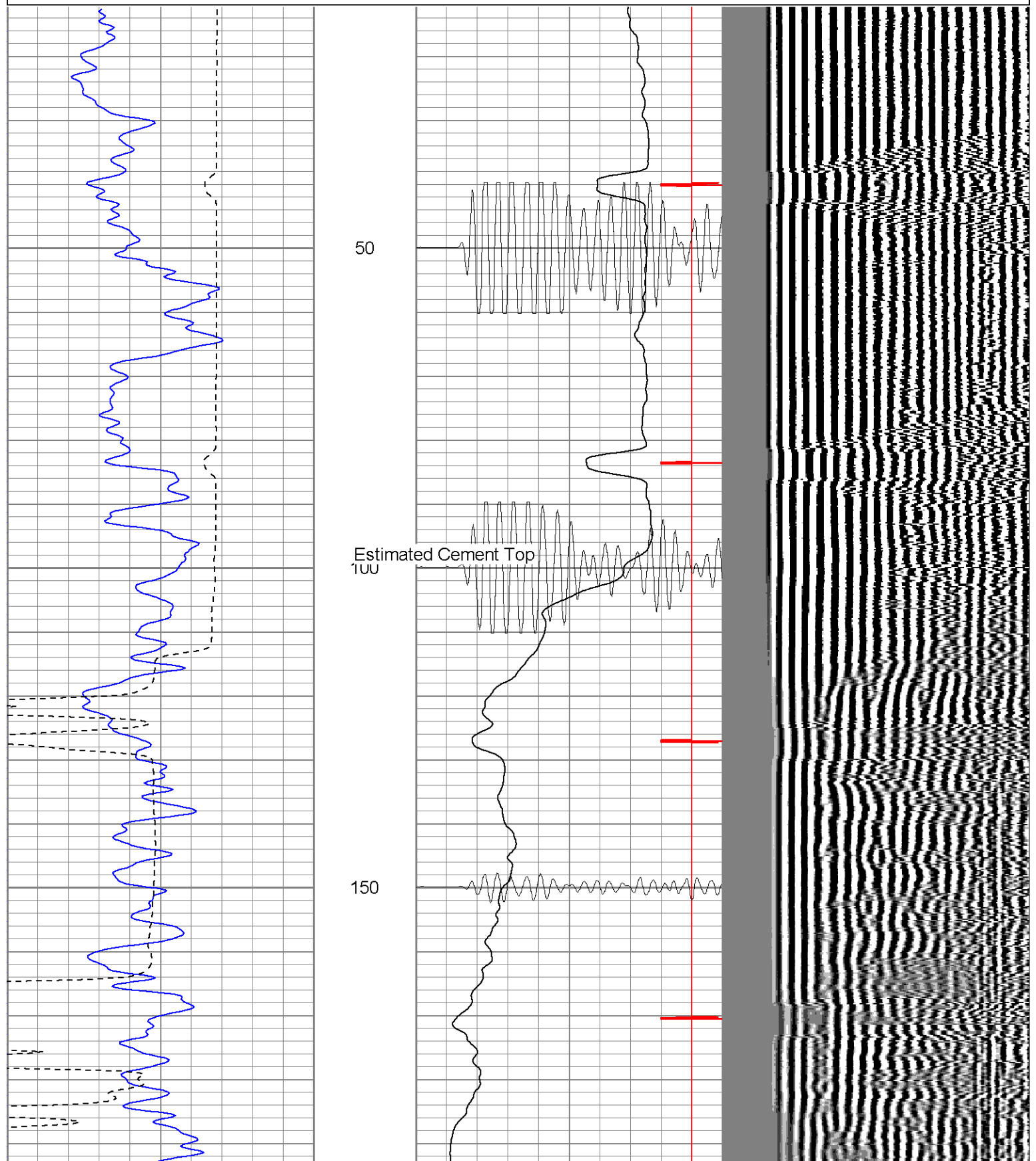
SUPERIOR

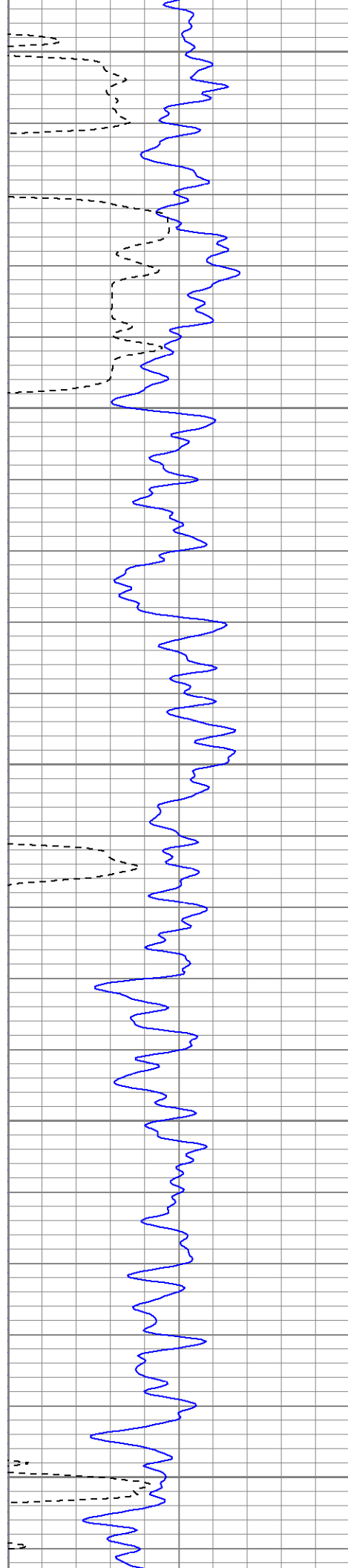
Black Lick, Pa.
Mercer, Pa.
Wooster, Oh.
Cleveland, Ok.
Trinidad, Co.

Main Pass

Database File: hr2611241907b.db
Dataset Pathname: pass2
Presentation Format: cblrt
Dataset Creation: Thu Apr 19 07:36:39 2007 by Log Open-Cased 060407
Charted by: Depth in Feet scaled 1:240

0	GR (GAPI)	200	0	AMP3 (mV)	100	200	Variable Density	1200
200	GR (GAPI)	400	18	CCL	-2			
400	TT3 (usec)	200	200	CBL5	1200			





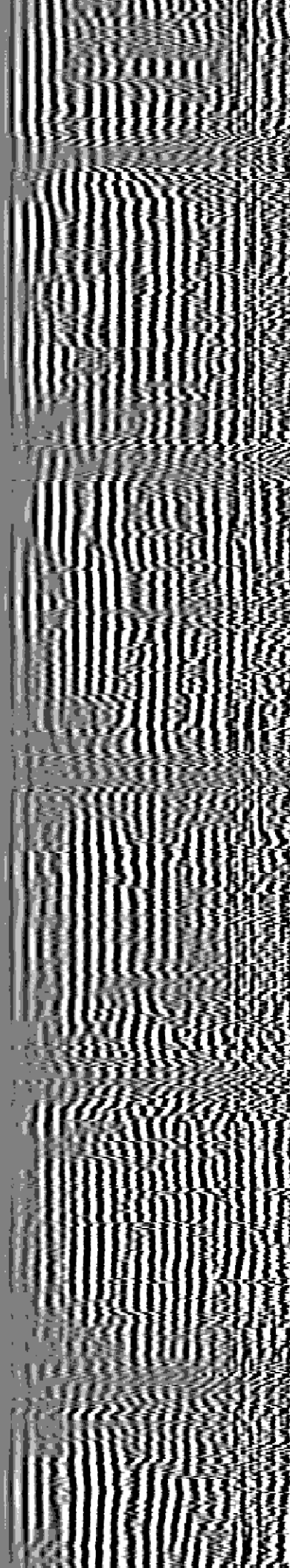
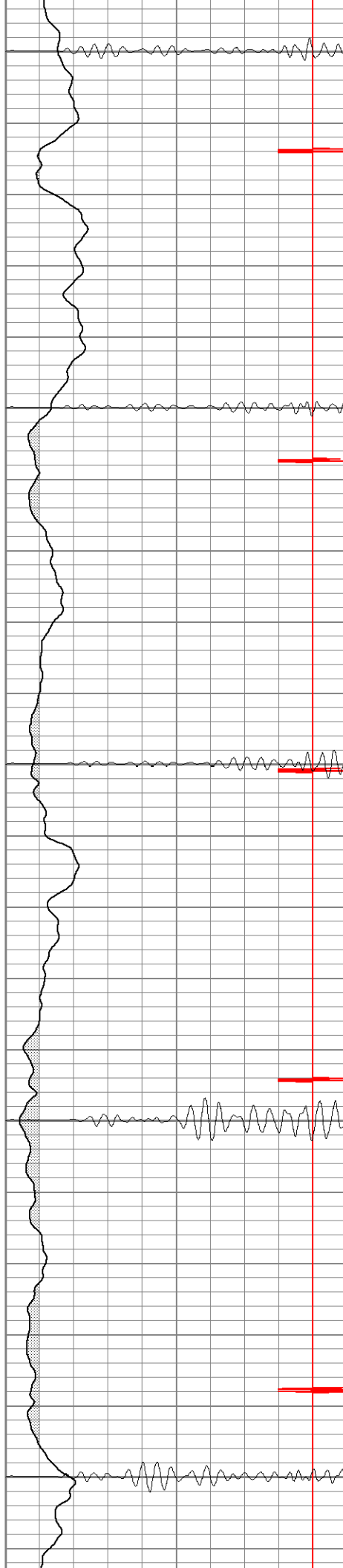
200

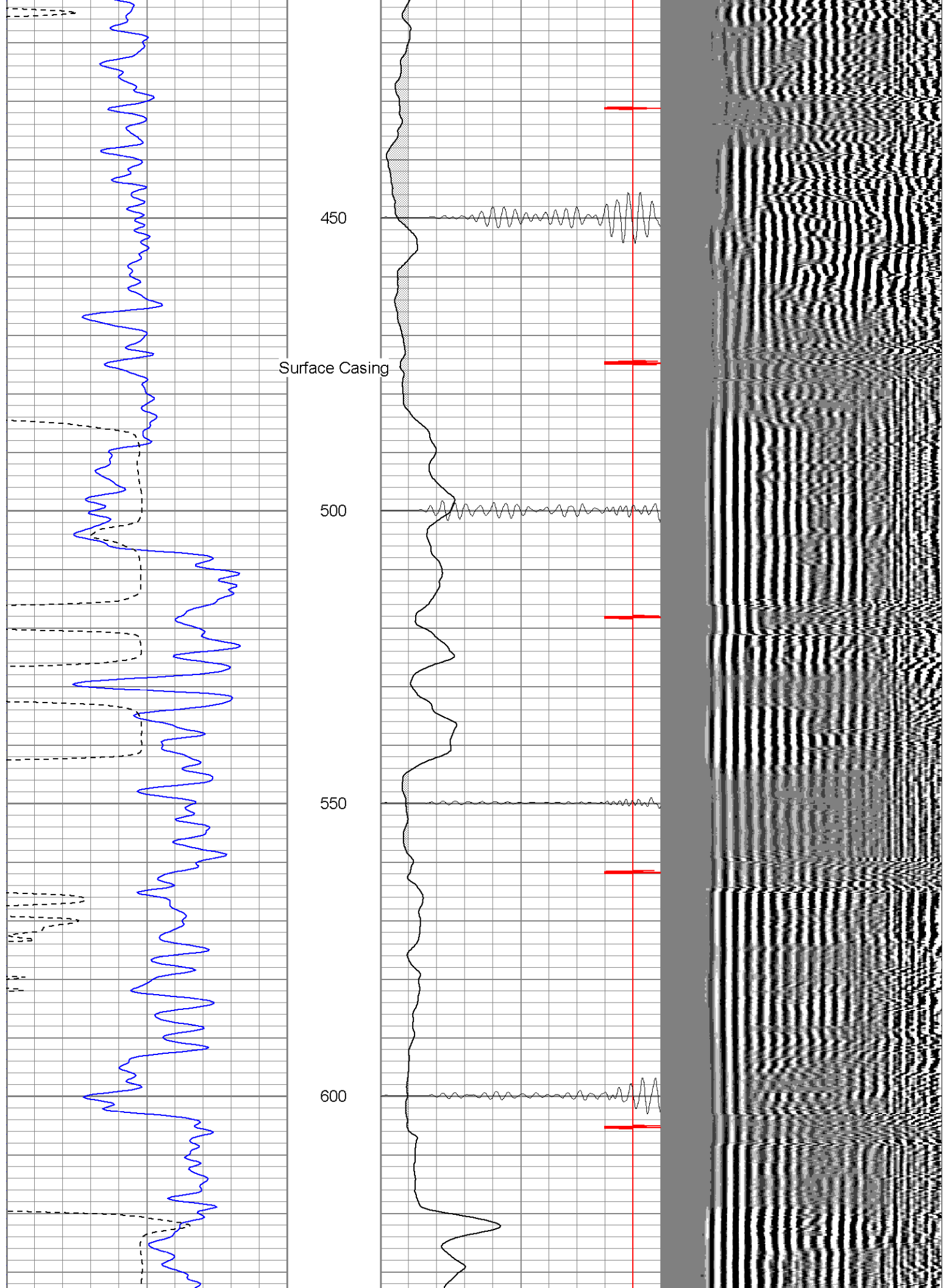
250

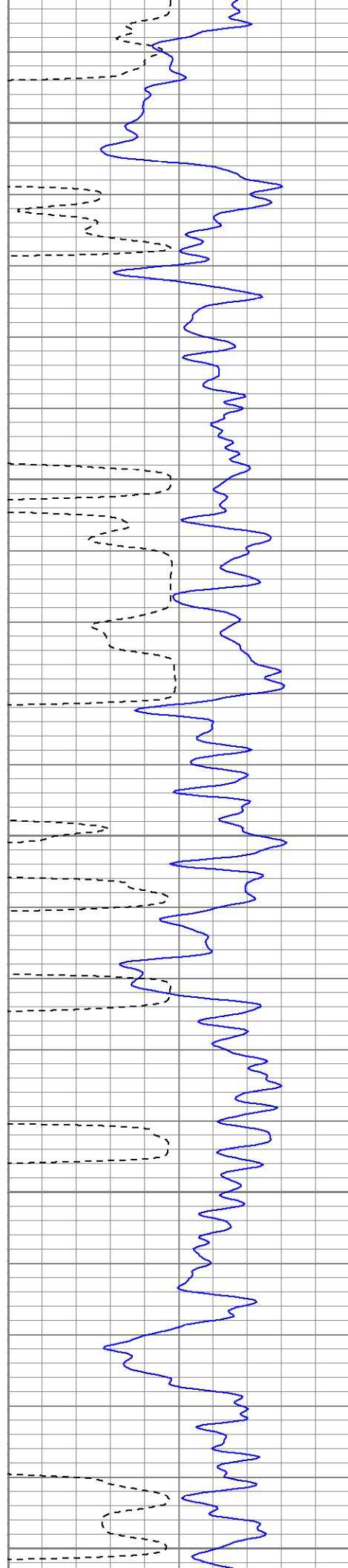
300

350

400







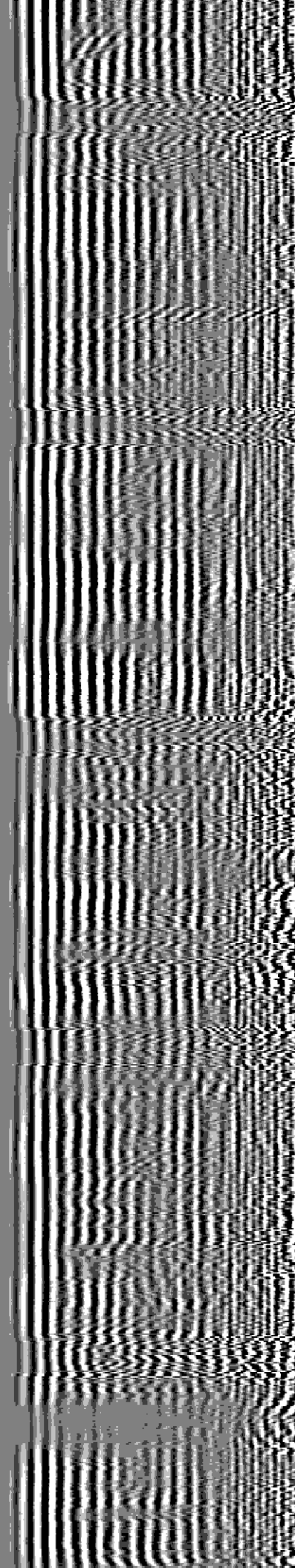
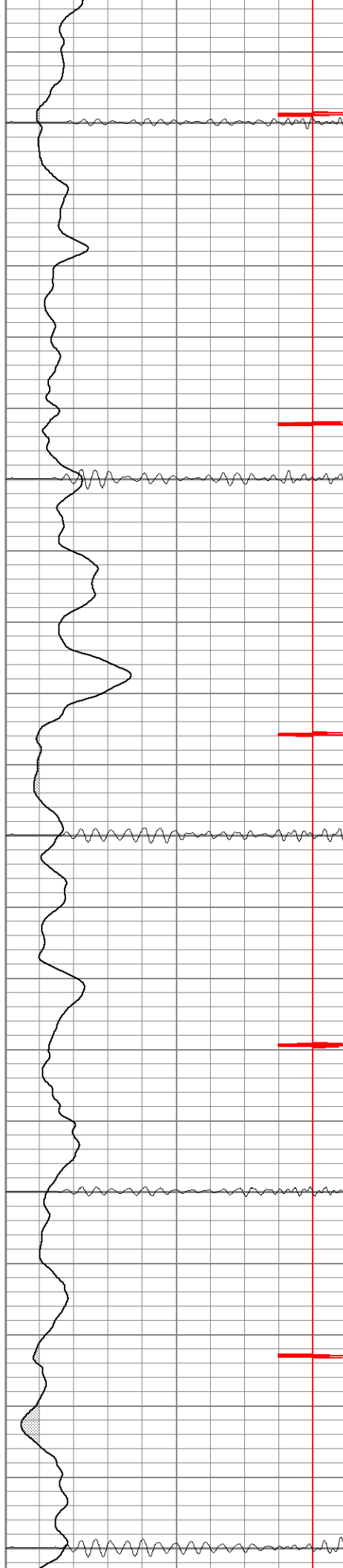
650

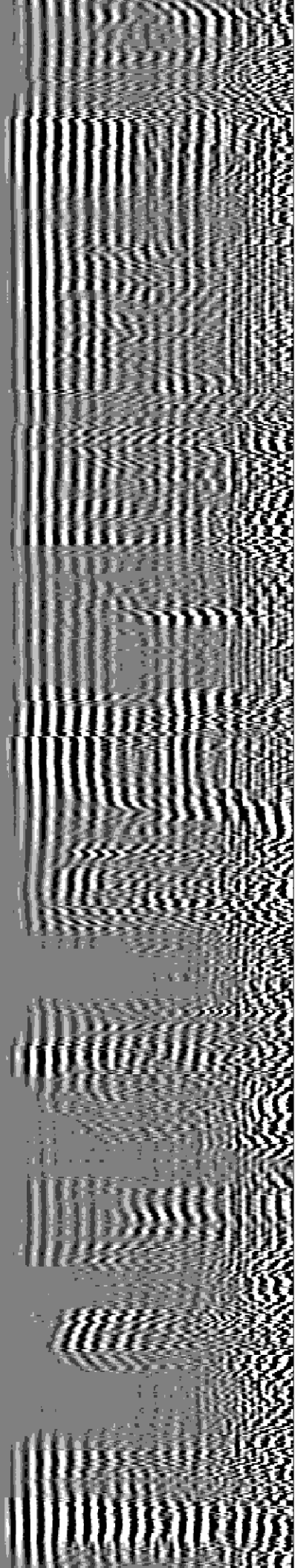
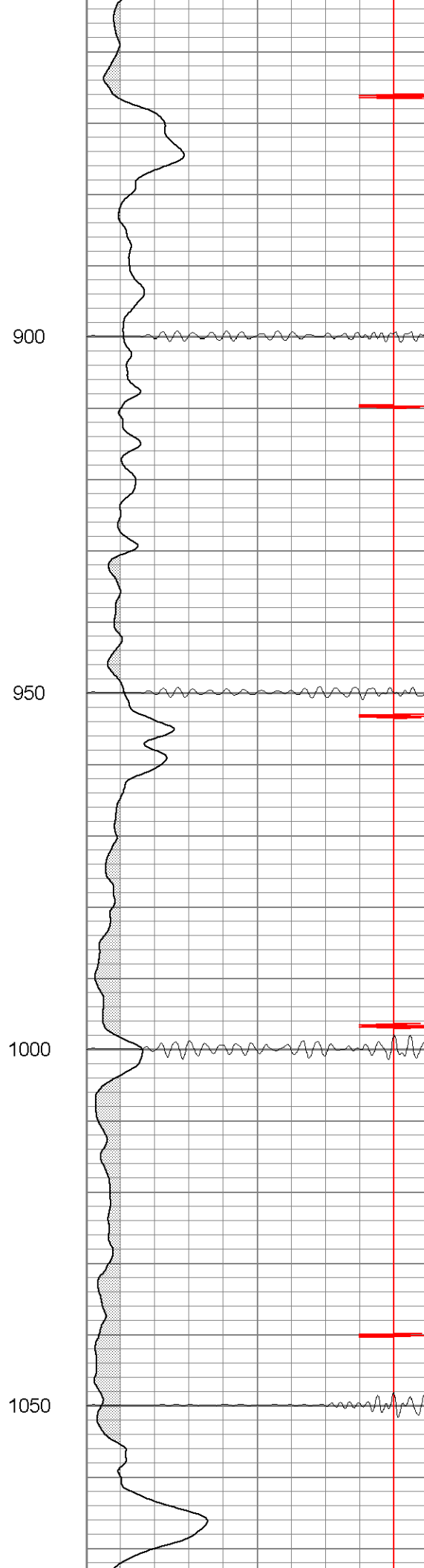
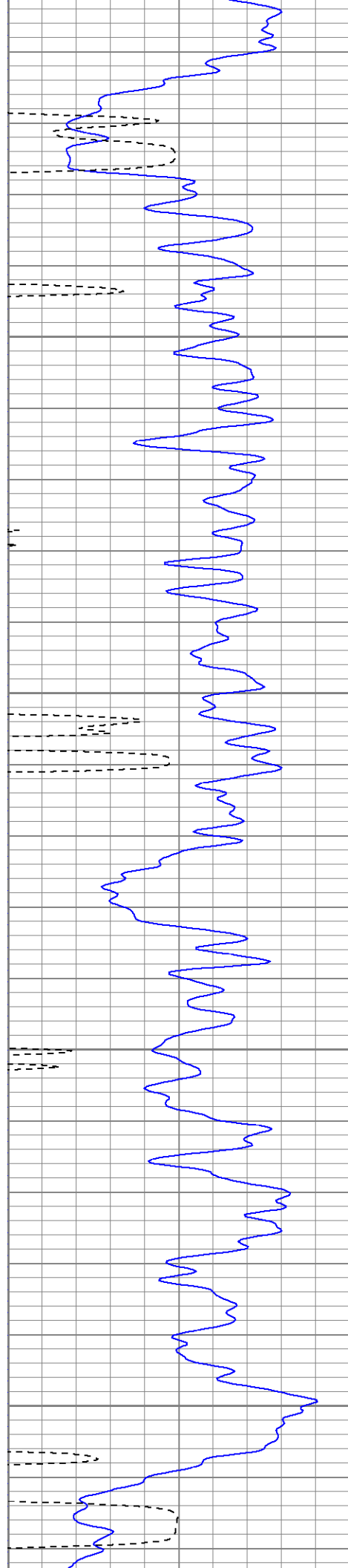
700

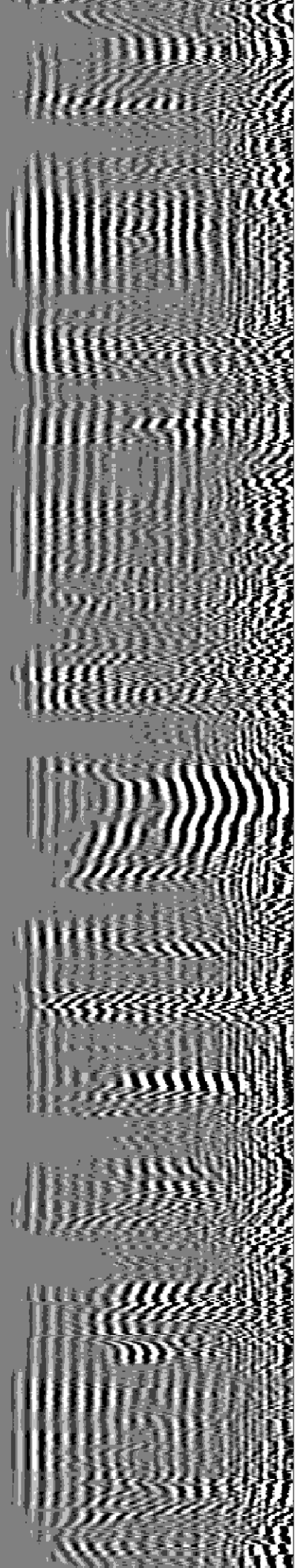
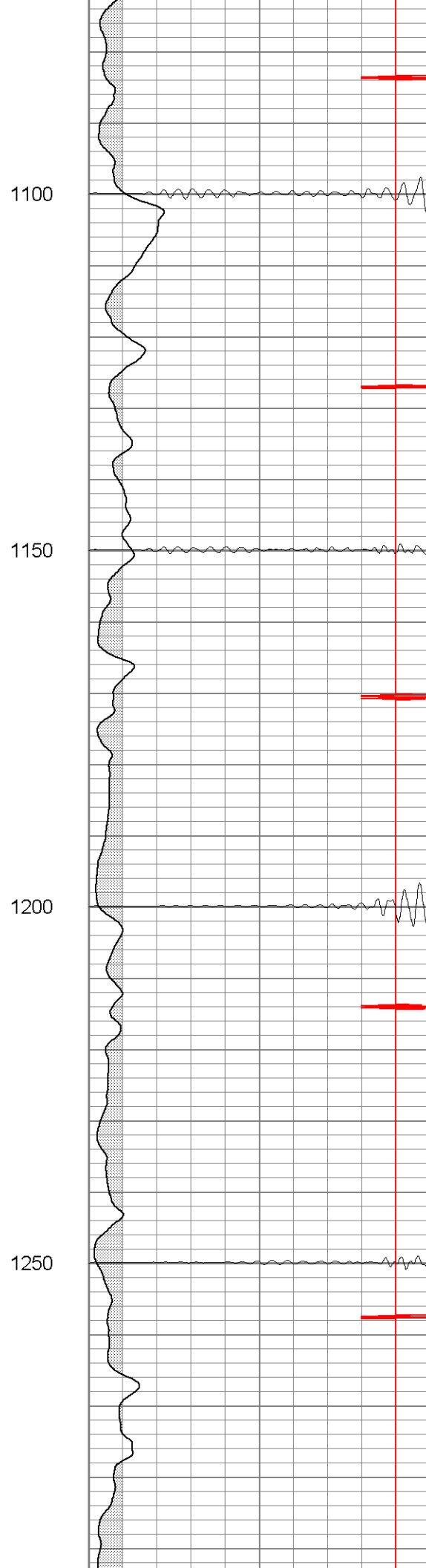
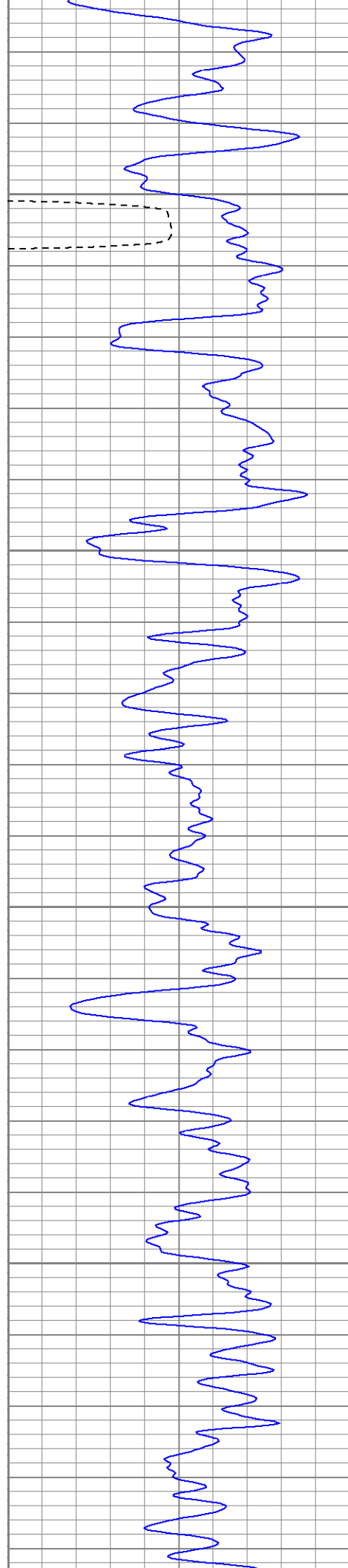
750

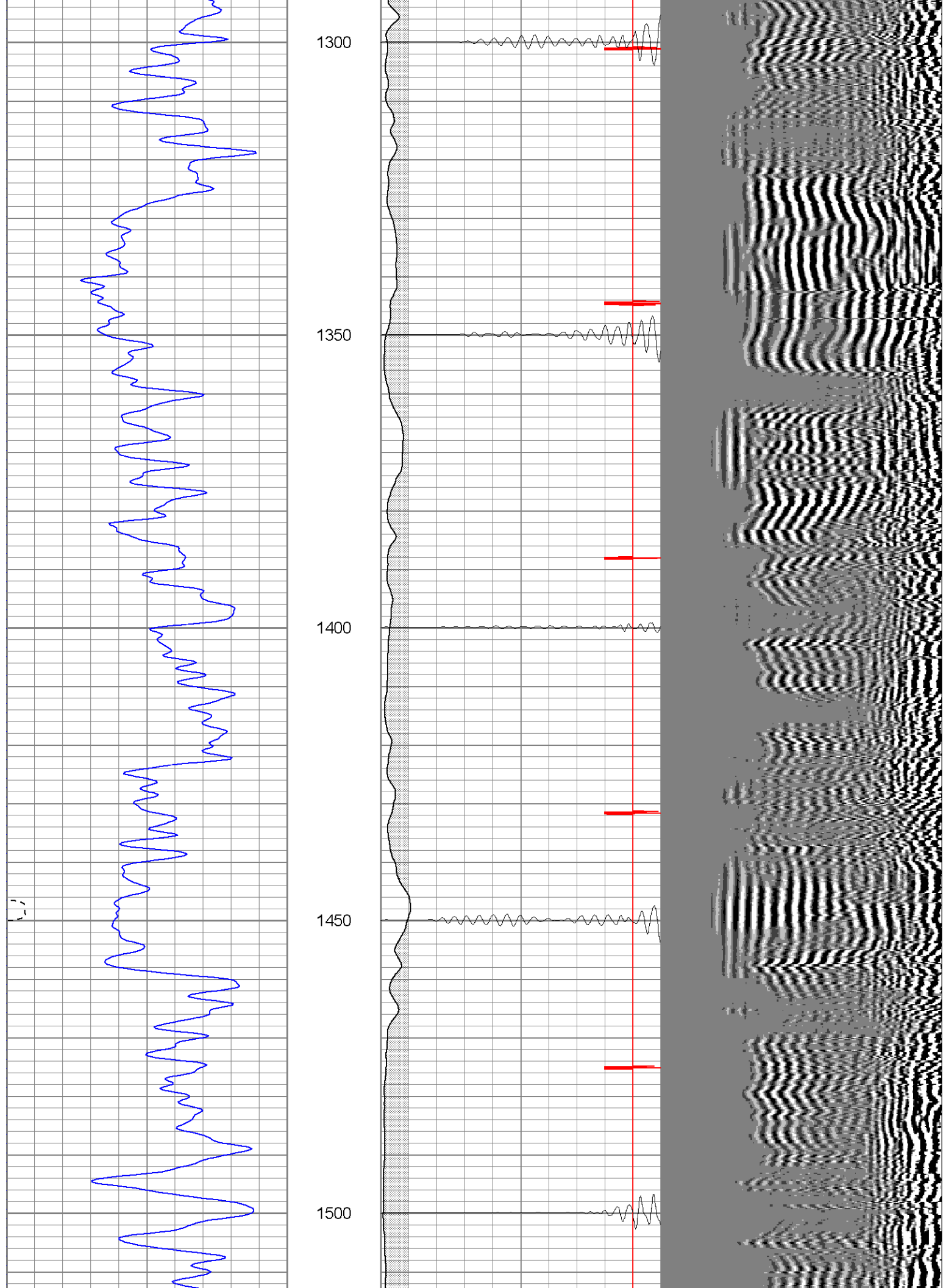
800

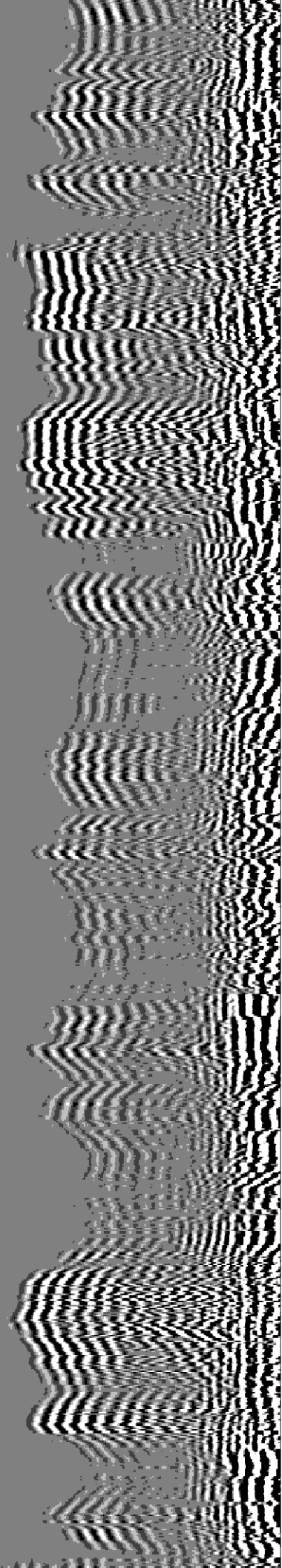
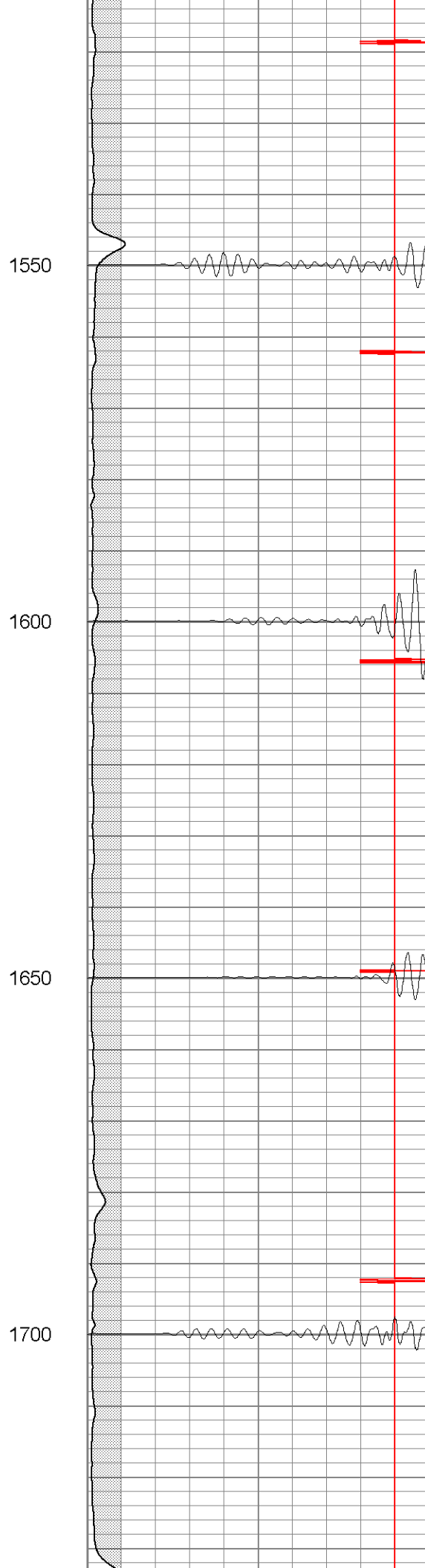
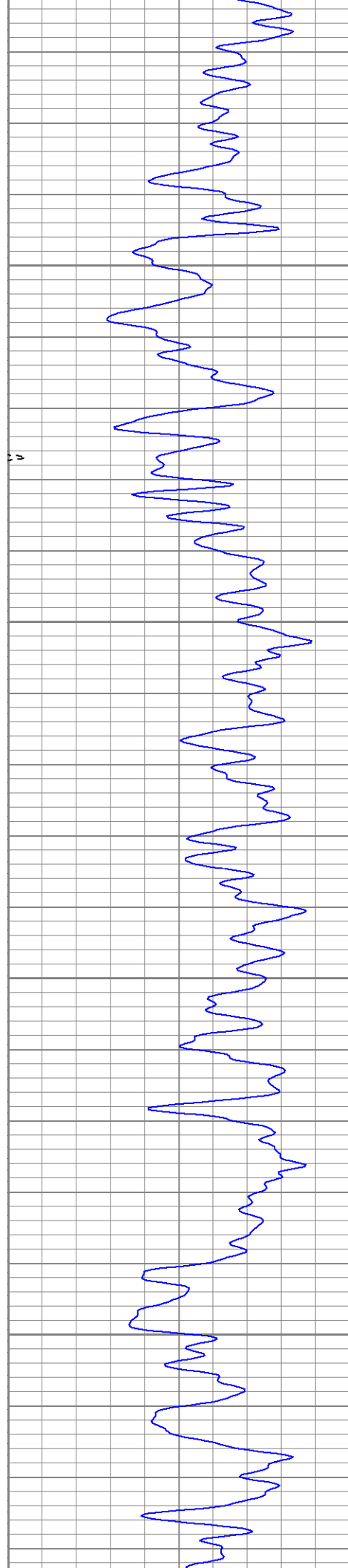
850

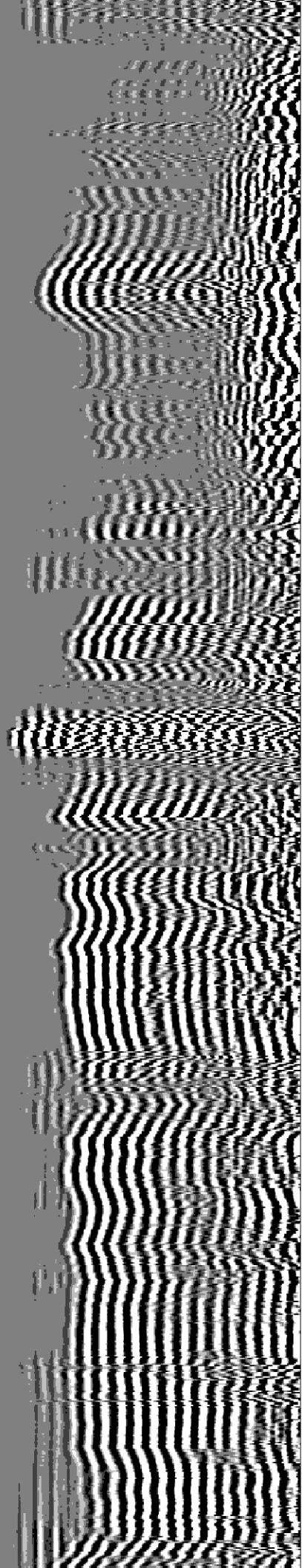
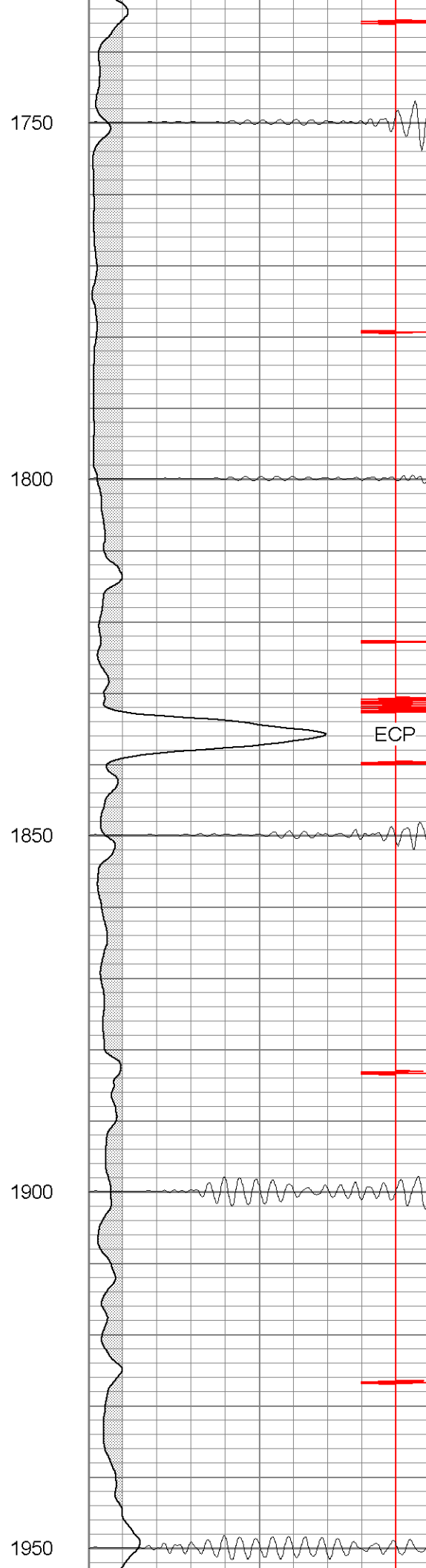
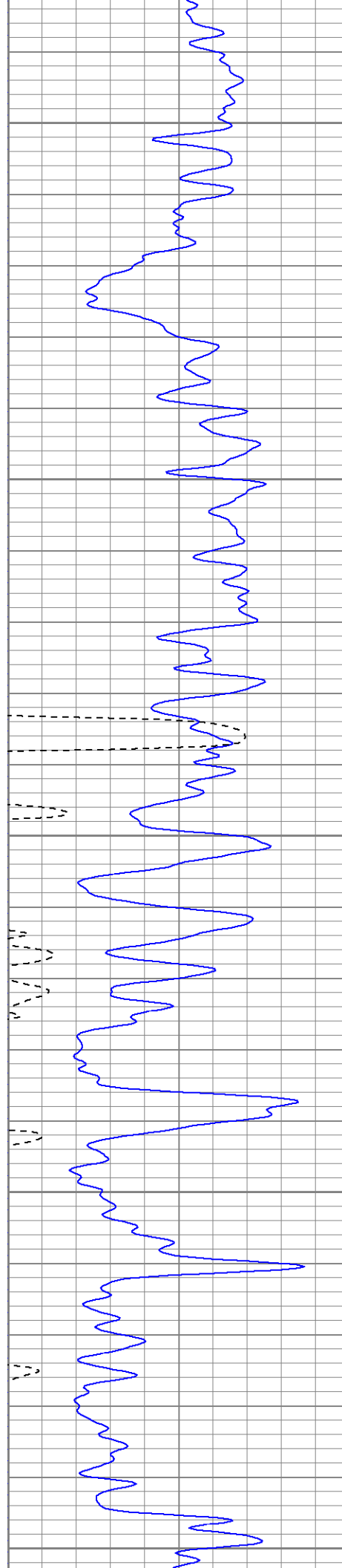


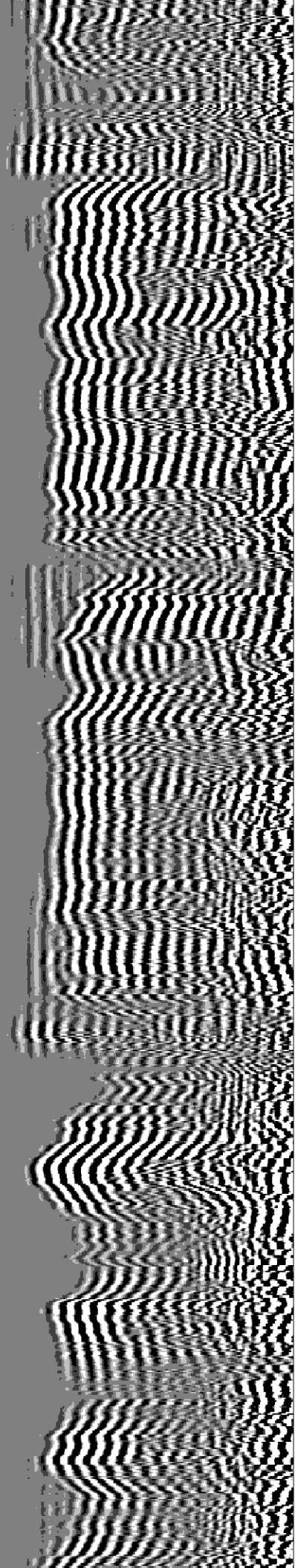
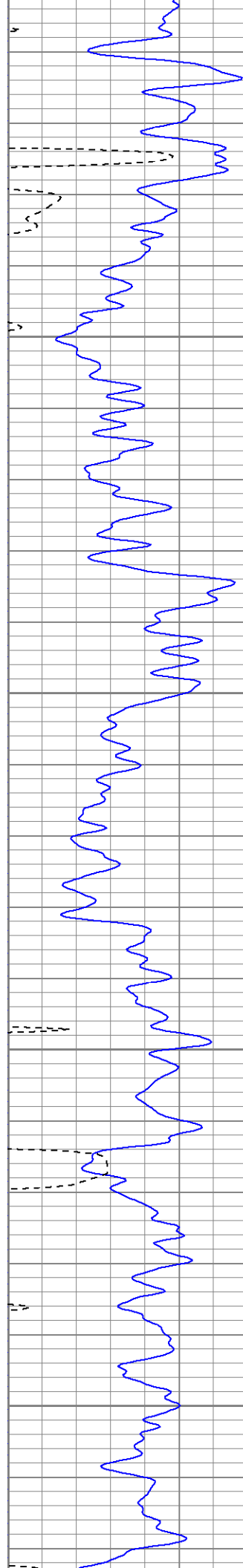


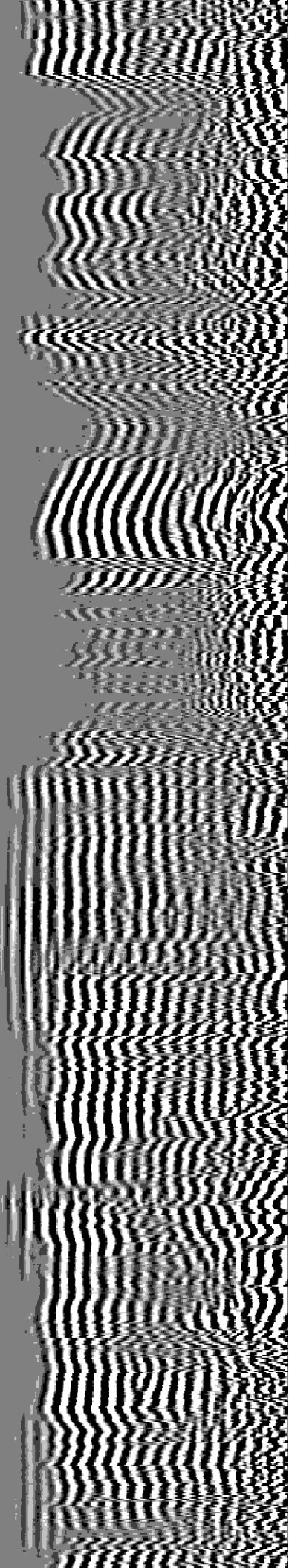
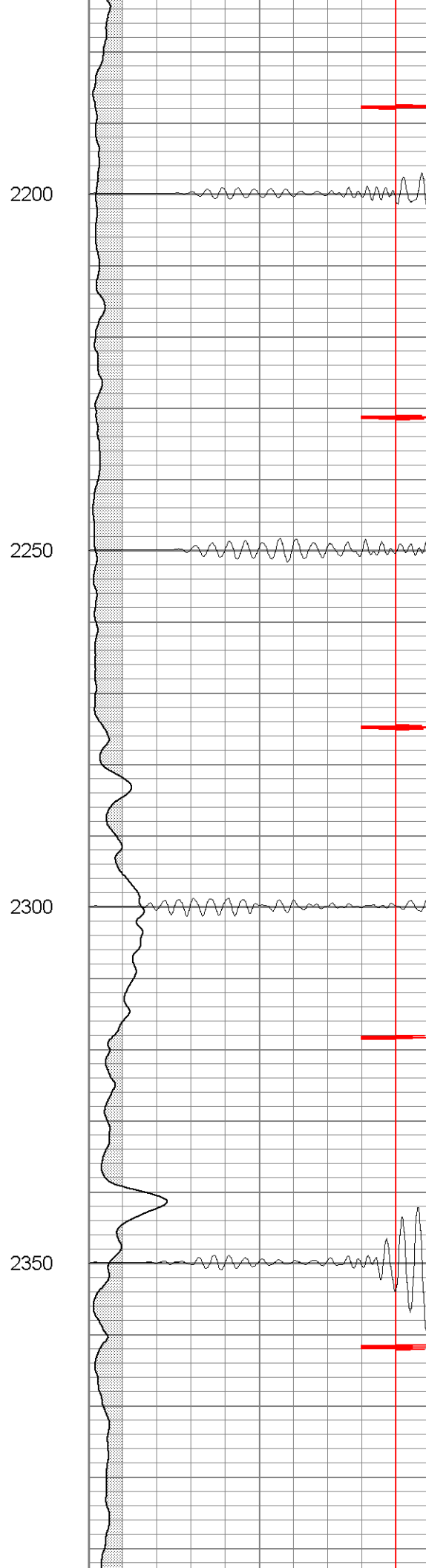
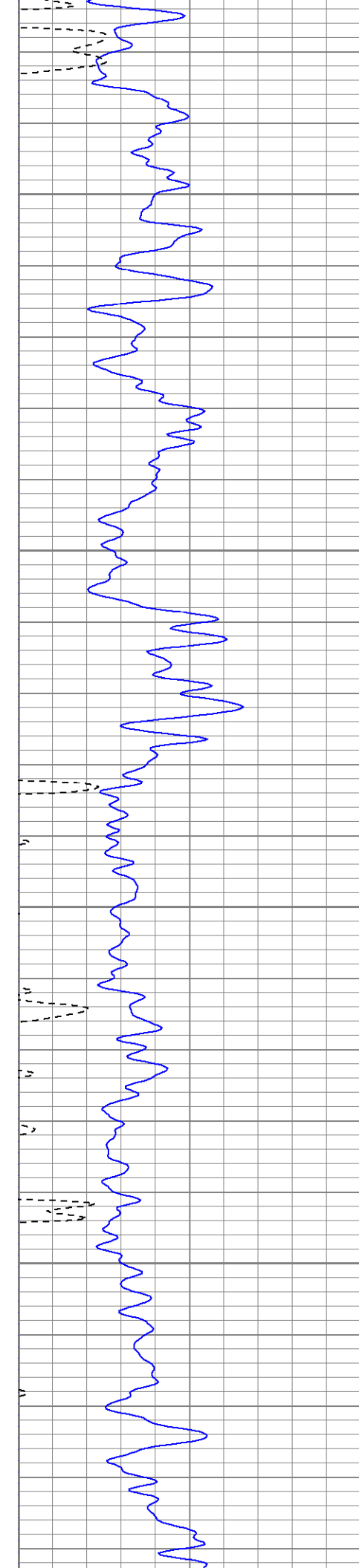


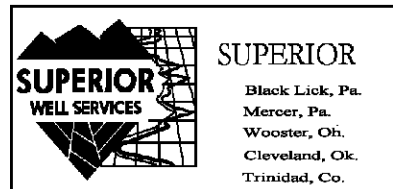
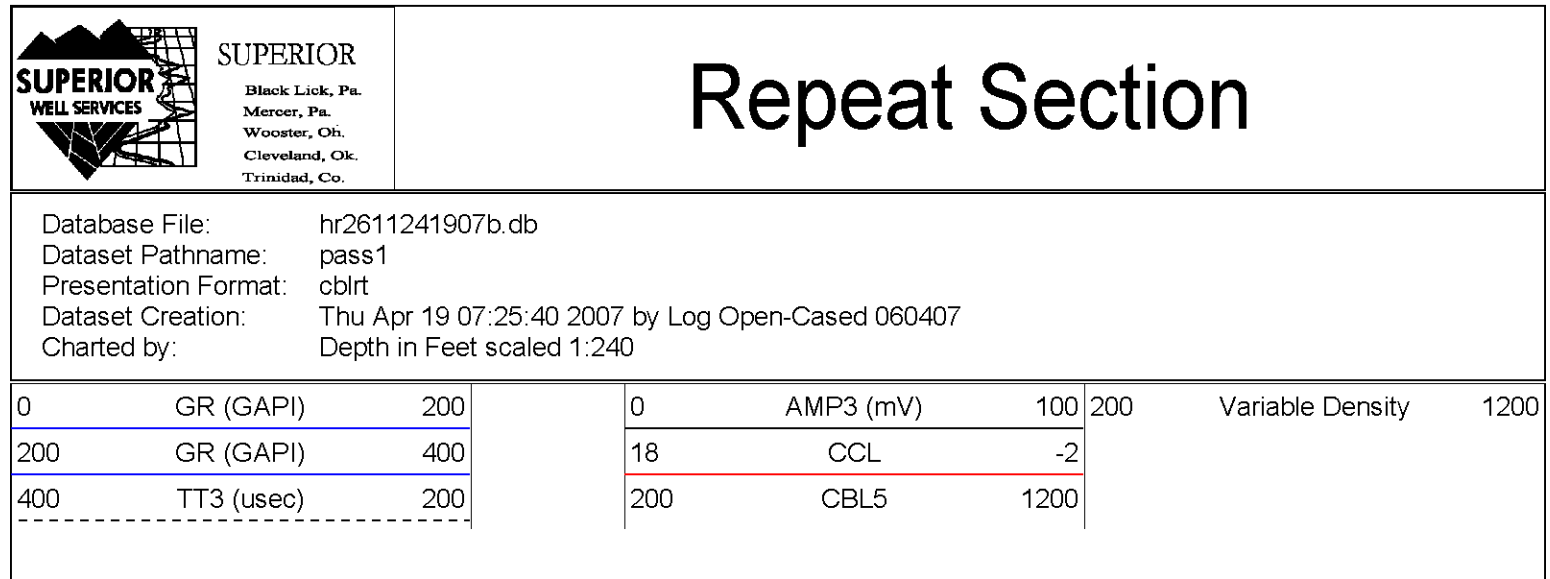
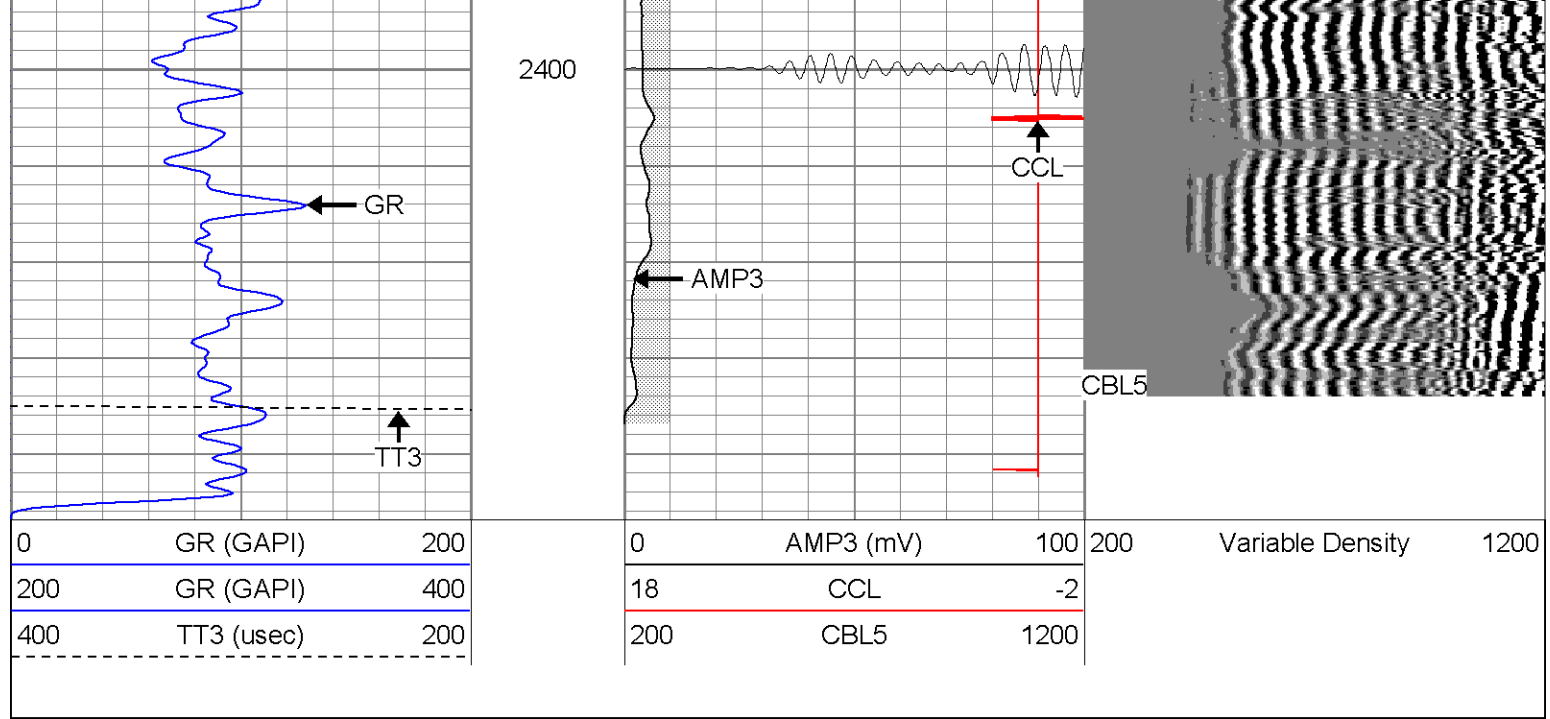






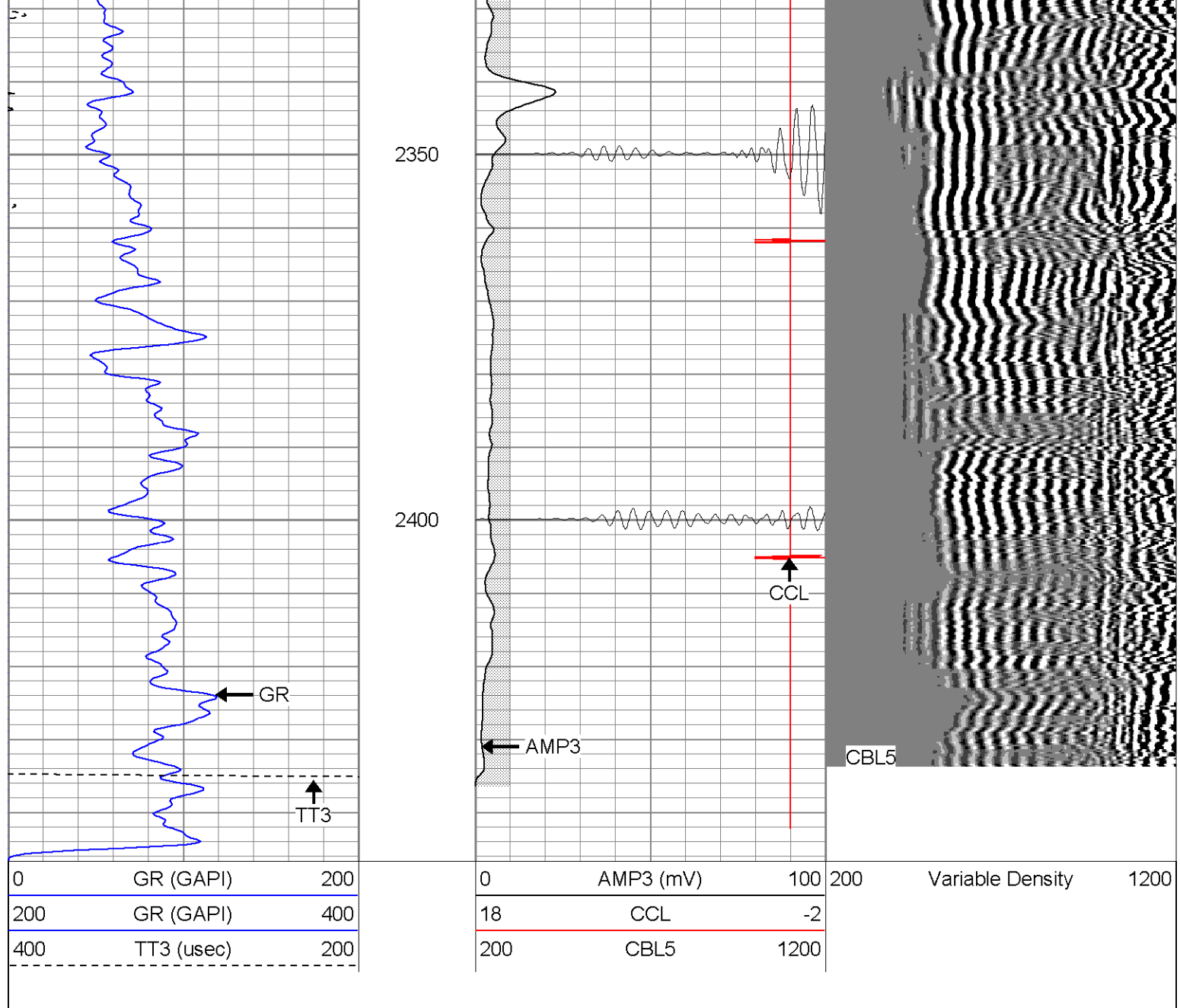






Repeat Section

Database File: hr2611241907b.db
 Dataset Pathname: pass1
 Presentation Format: cblrt
 Dataset Creation: Thu Apr 19 07:25:40 2007 by Log Open-Cased 060407
 Charted by: Depth in Feet scaled 1:240



Calibration Report

Database File: hr2611241907b.db
Dataset Pathname: pass1
Dataset Creation: Thu Apr 19 07:25:40 2007 by Log Open-Cased 060407

Gamma Ray Calibration Report

Serial Number: Titan2.75
Tool Model: 2.75
Performed: Thu Apr 12 13:38:58 2007

Calibrator Value: 200.0 GAPI

Background Reading: 40.0 cps
Calibrator Reading: 240.0 cps

Sensitivity: 1.1000 GAPI/cps

Cement Bond Log Calibration Report

Serial Number: Titan4
Tool Model: 4
Performed: Thu Apr 12 14:22:52 2007

Depth:	1054.62	ft	
Casing Diameter:	5.5	in	
	3' Spacing	5' Spacing	
Signal Zero:	0	1	mV
Calibrated Amplitude:	85	85	mV
Reading at Signal Zero:	0.00161133	0.0143555	V
Reading in Free Pipe:	1.82	1.65081	V
Gain:	46.7447	51.3306	
Offset:	0.15	0.263125	

Sensor	Offset (ft)	Schematic	Description	Len (ft)	OD (in)	Wt (lb)
CHD	20.38		CHD-None (0)	0.75	1.50	5.00
CENT	19.63		CENT-X (2)	3.00	1.69	25.00
WVF5	12.82		CBL-4 (Titan4)	8.15	2.25	110.00
WVF3	11.82					
CENT	8.48		CENT-X (1)	3.00	1.69	25.00
CCL	4.27		CCL-2.75 (Titan2.75)	1.71	2.75	15.00
GR	1.42		GR-2.75 (Titan2.75) Two Point	3.77	2.75	25.00
Dataset: hr2611241907b.db: field/well/run1/pass1 Total Length: 20.38 ft Total Weight: 205.00 lb O.D. 2.75 in						