

**DUAL INDUCTION**

Company **EnCana Oil & Gas (USA) Inc**

Wattenberg	to not guarantee responsibility for employment schedule.
------------	--

location	662' FSL & 2034' FWL	Other Services
----------	----------------------	----------------

Sec. 24, Twp. 4N, Rge. 66W	Elevation
----------------------------	-----------

KB	DF. 4759	measurements
KB	GL. 4747	negligent made by tions set
January 14, 2007		

[illegible][illegible][illegible]

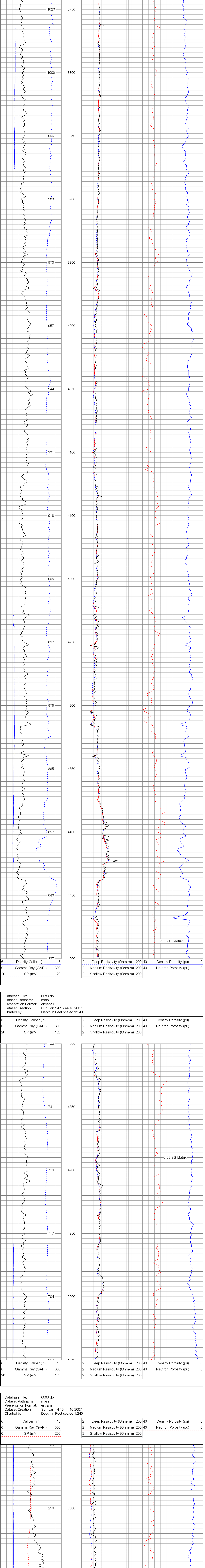
4.75 @ 49° F		
3.92 @ 49° F		
5.50 @ 40° F		

[illegible]

				Interpretation
				Primary interpretation
				Uses included
Brighton, CO	4400	724° F		Fold He
				Temperature

	Official Document			<	All in of exp
	Ed Pichler				

Database File: 6683.db



The figure consists of four subplots arranged horizontally, each showing a different type of time series on a grid background. From left to right: 1. A smooth, upward-sloping curve (black solid line) with a dashed red line representing a linear fit. 2. A noisy, upward-sloping curve (black solid line) with a dashed red line representing a linear fit. 3. A periodic, oscillating signal (black solid line) with a dashed red line representing a linear fit. 4. A random walk signal (blue solid line) with a dashed red line representing a linear fit.

