

Patterson

**CEMENT
BOND
LOG**

Company		XTO Energy Inc.	
Well		Apache Canyon 05-04	
Field		Purgatoire River	
County		Las Animas	
State		Colorado	
Location:		API # : 05 071 08817 00	
SEC 5		TWP 34S	
RGE 67W		Elevation 7838'	
Permanent Datum		Ground Level	
Log Measured From		Ground Level	
Drilling Measured From		Ground Level	
Date		07-19-06	
Run Number		One	
Depth Driller		2420'	
Depth Logger		2358'	
Bottom Logged Interval		2354'	
Top Log Interval		Surface	
Open Hole Size		7 7/8"	
Type Fluid		Water	
Density / Viscosity		///	
Max. Recorded Temp.		///	
Estimated Cement Top		1130'	
Time Well Ready		11:00 a.m.	
Time Logger on Bottom		11:15 a.m.	
Equipment Number		T677	
Location		Trinidad	
Recorded By		L. Smith	
Witnessed By		Mr. Mike Polley	
Run Number		Bit	
From		To	
Size		Weight	
From		To	
Casing Record		Size	
Surface String		8 5/8"	
Prot. String		Wgt/Ft	
Production String		Top	
Liner		Bottom	

>>> Fold Here >>>

All interpretations are opinions based on inferences from electrical or other measurements and we cannot and do not guarantee the accuracy or correctness of any interpretation, and we shall not, except in the case of gross or willful negligence on our part, be liable or responsible for any loss, costs, damages, or expenses incurred or sustained by anyone resulting from any interpretation made by any of our officers, agents or employees. These interpretations are also subject to our general terms and conditions set out in our current Price Schedule.

Comments

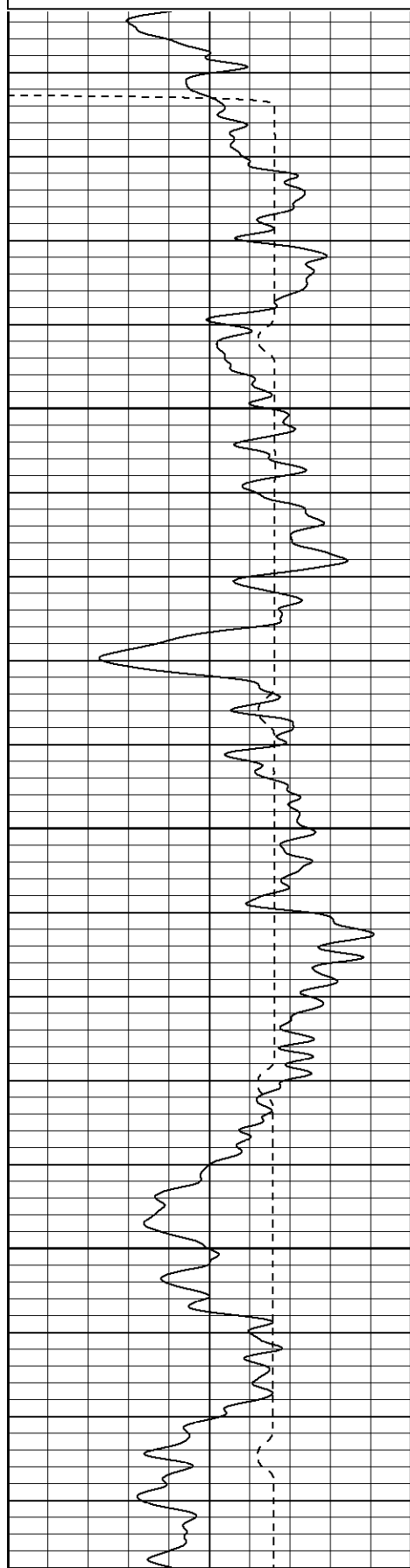
First Bosque entrance, up Cherry Canyon, at Y go left and stay on main rd. for 5.1 miles, turn left, drive thru AC 31-16 to location.

Database File: xtoac0504071906b.db
Dataset Pathname: pass2
Presentation Format: cblrt
Dataset Creation: Wed Jul 19 11:27:24 2006 by Log Warrior 7.0 STD Ope
Charted by: Depth in Feet scaled 1:240

0	GR (GAPI)	200
400	TT3 (usec)	200

0	AMP3 (mV)	100
18	CCL	-2
100	CBL5	1200

200	Variable Density	1200
-----	------------------	------



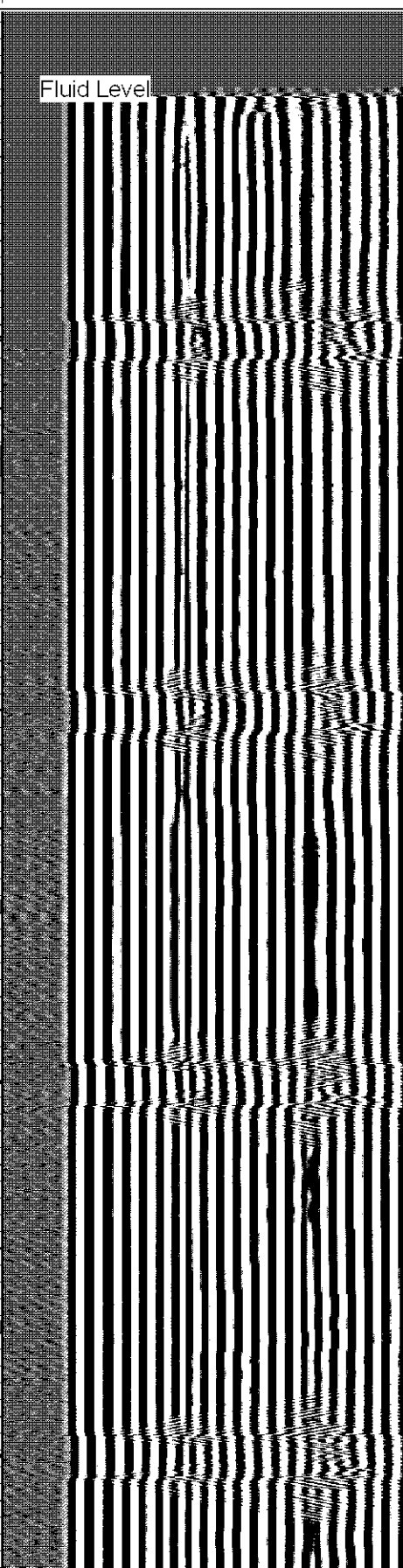
50

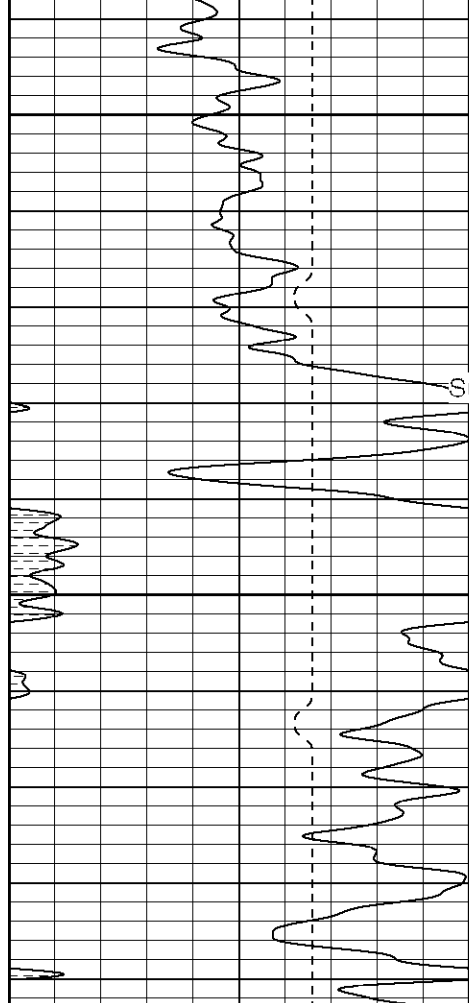
100

150



Fluid Level

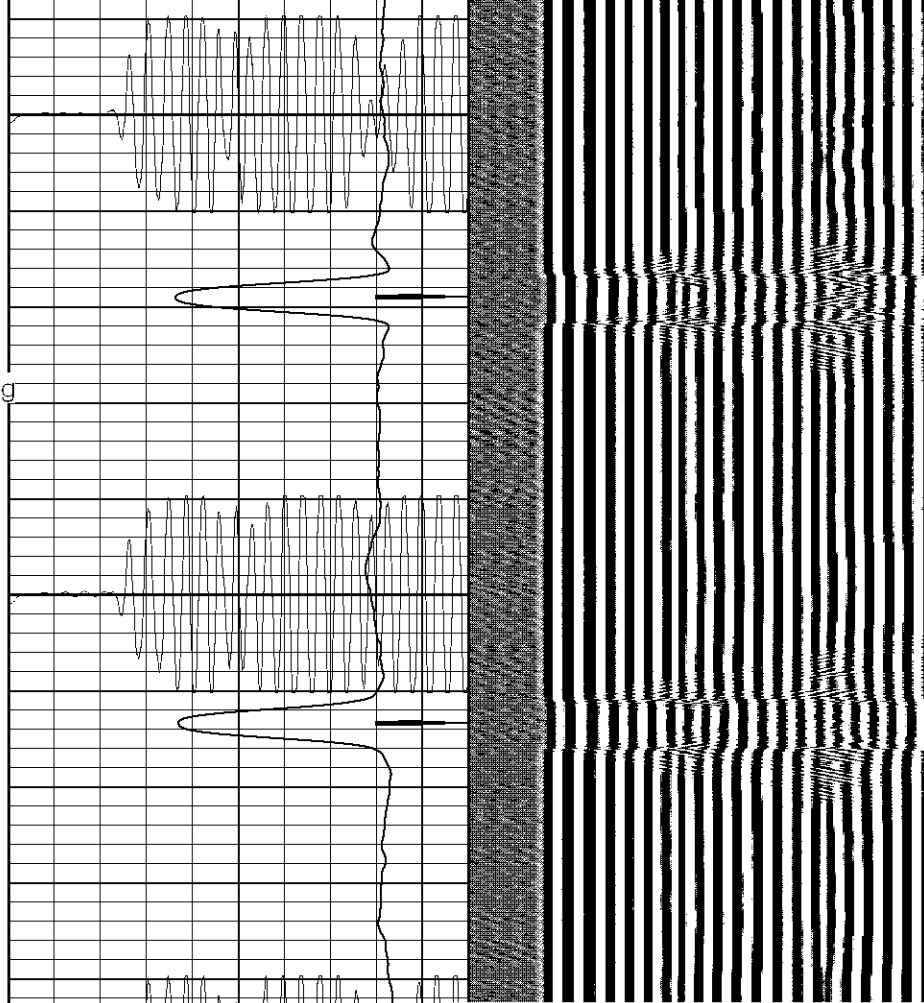


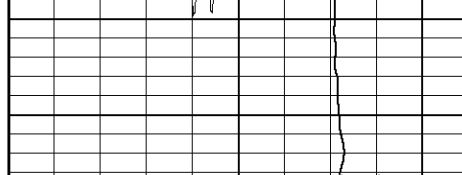
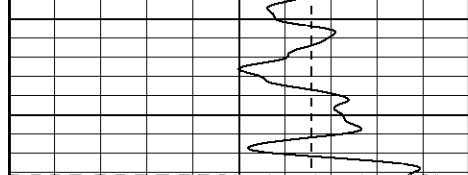


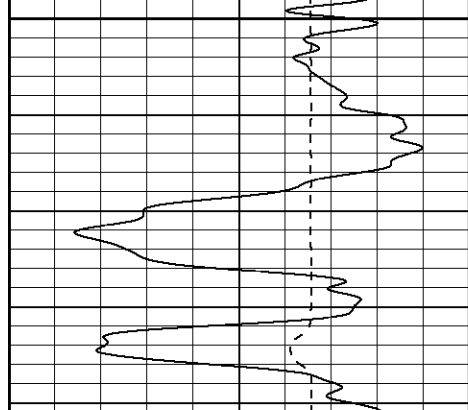
200

Surface Casing

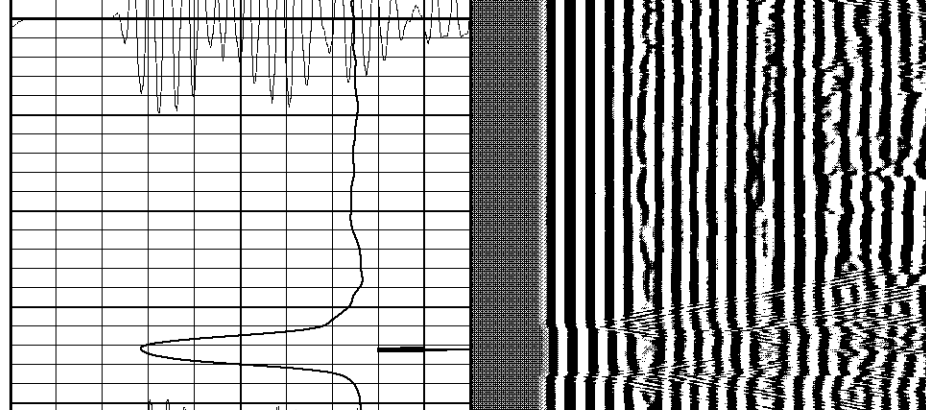
250

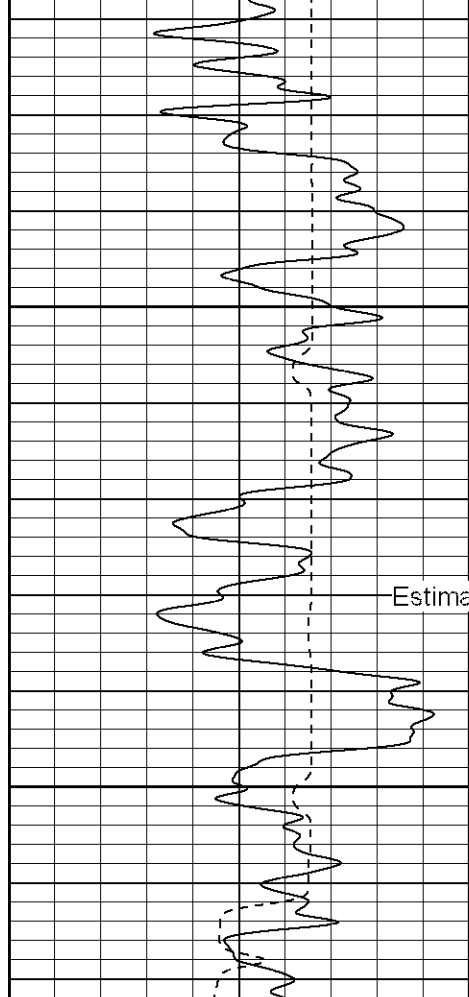






850

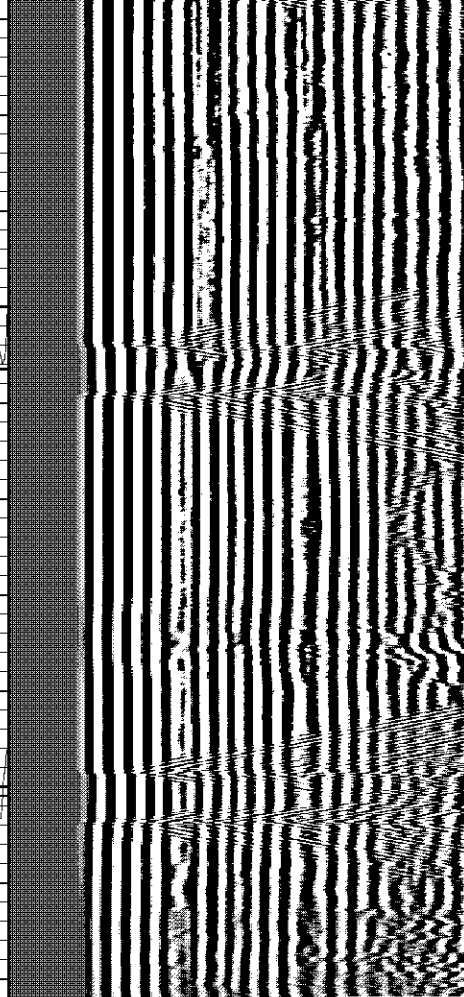
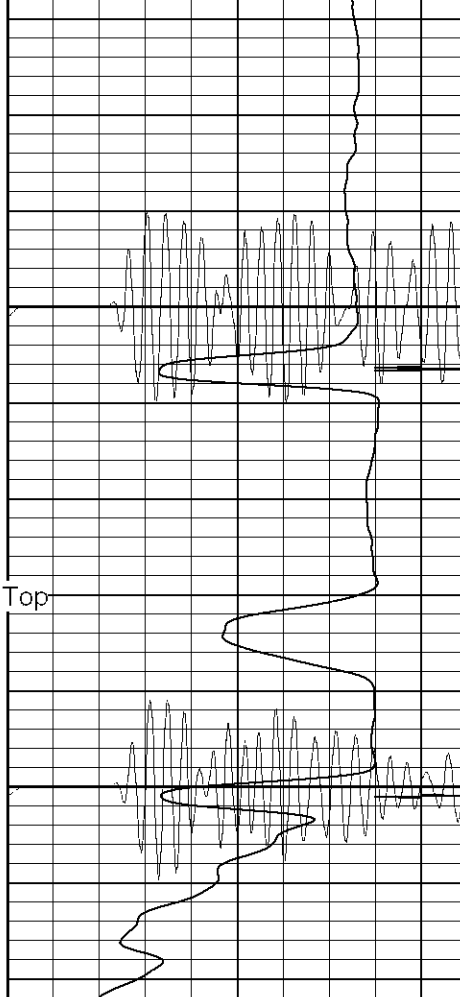


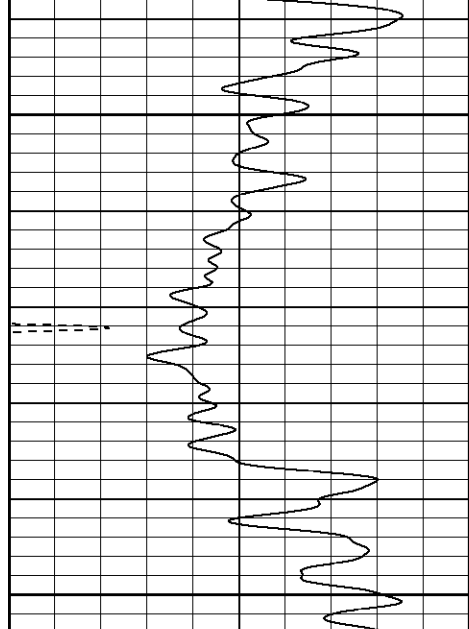


1100

Estimated Cement Top

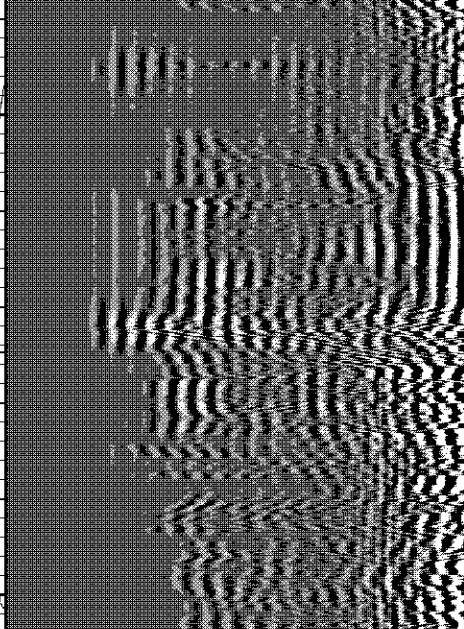
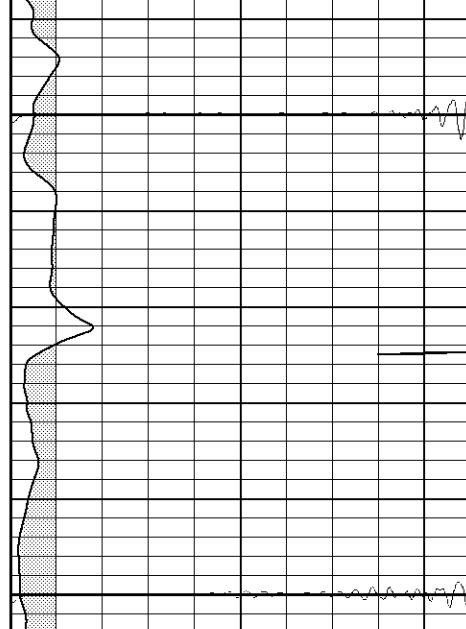
1150

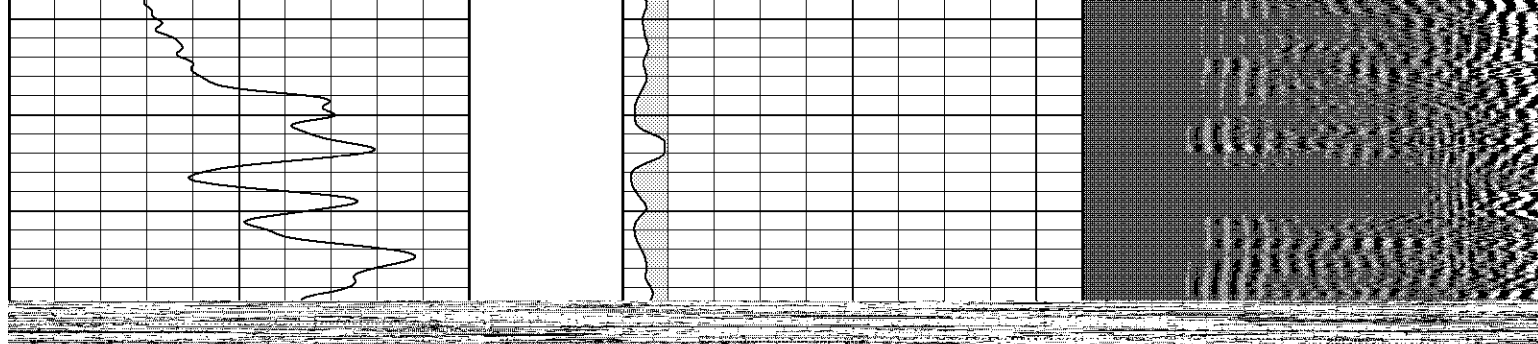


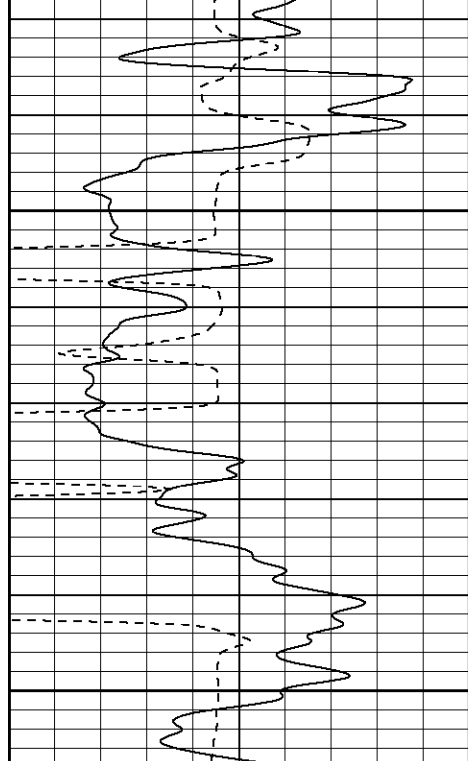


1300

1350

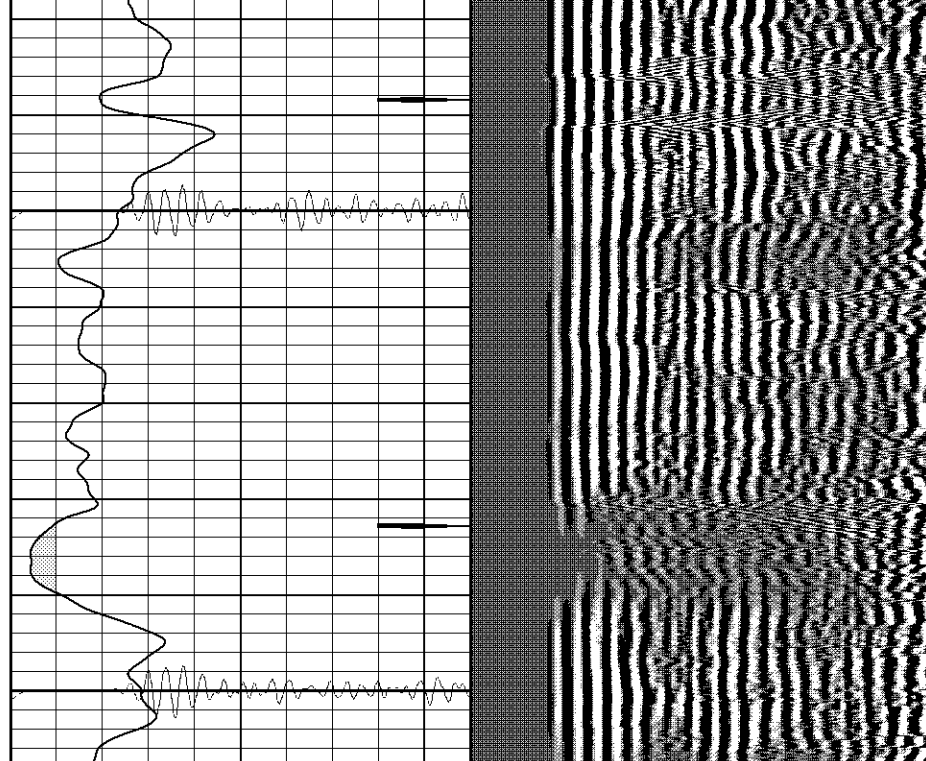


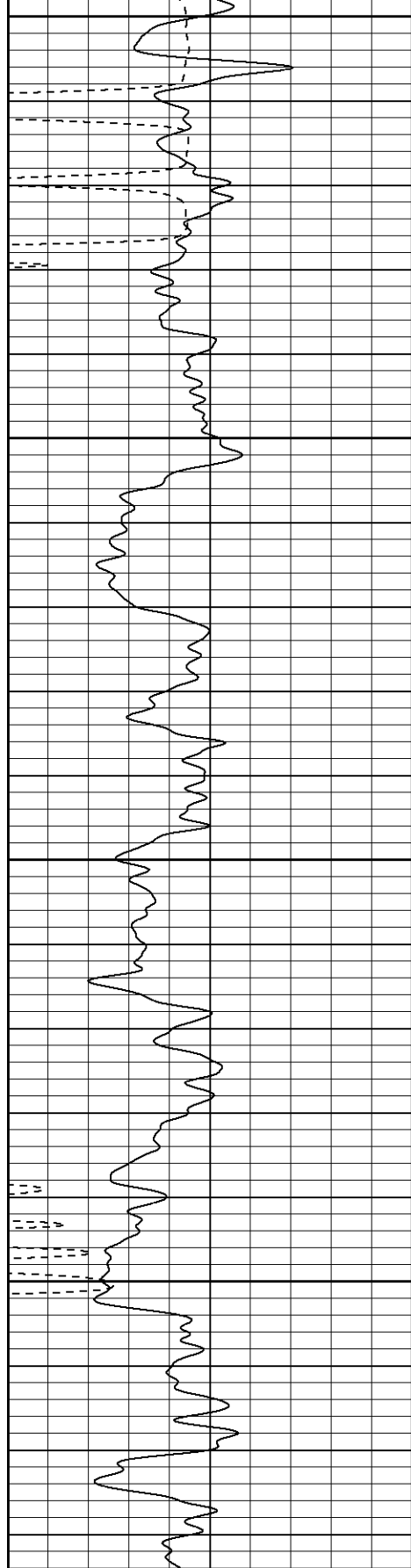




1750

1800



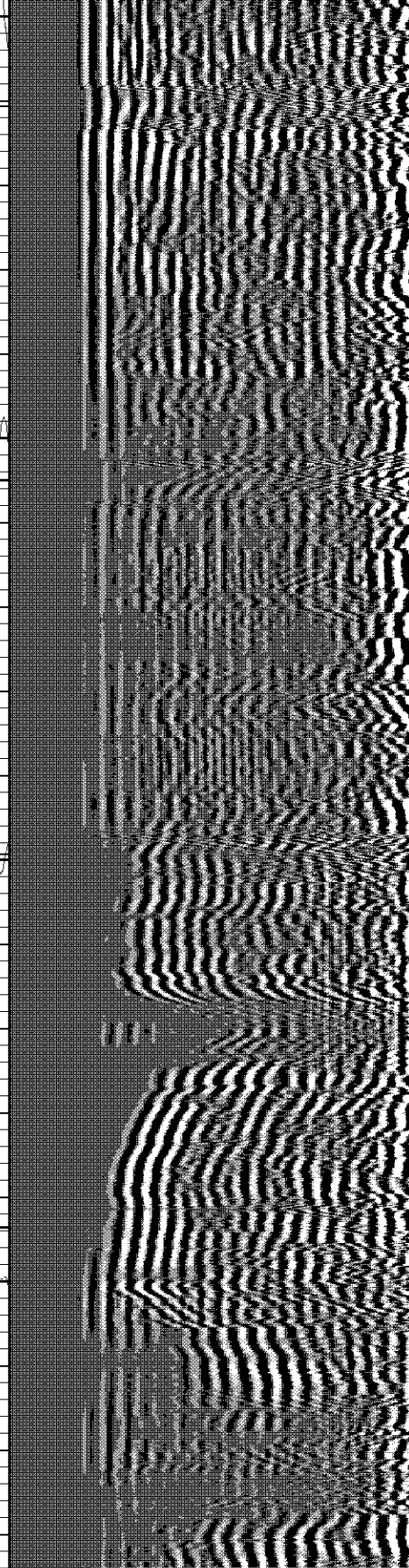
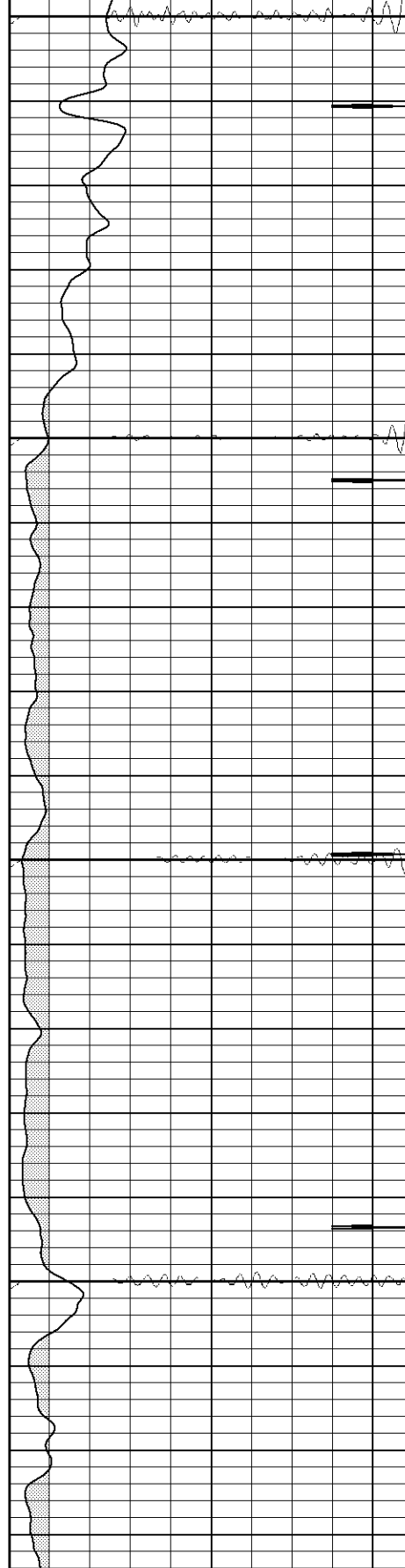


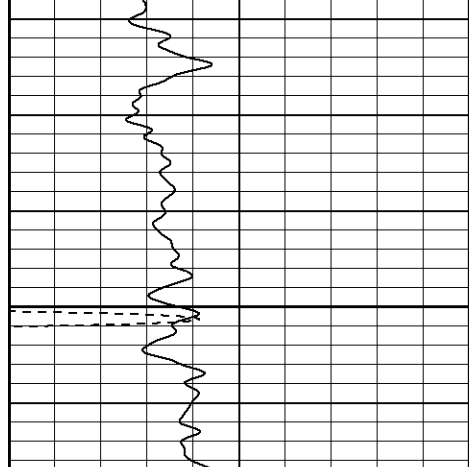
1950

2000

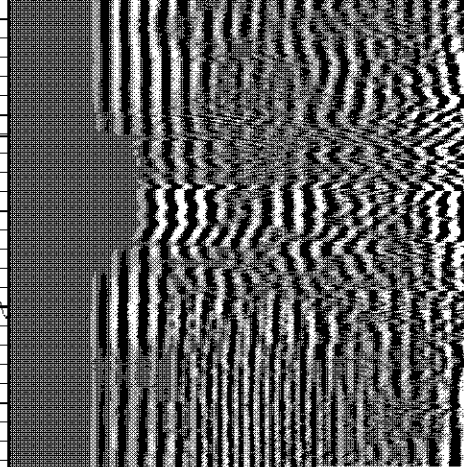
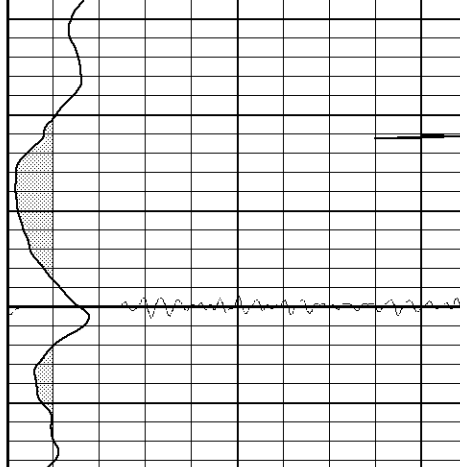
2050

2100





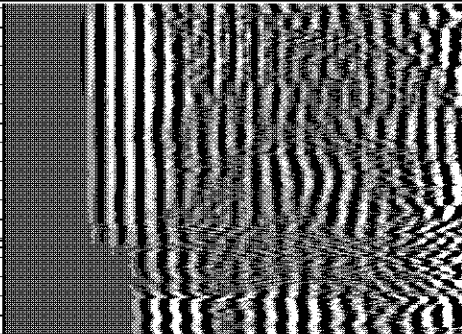
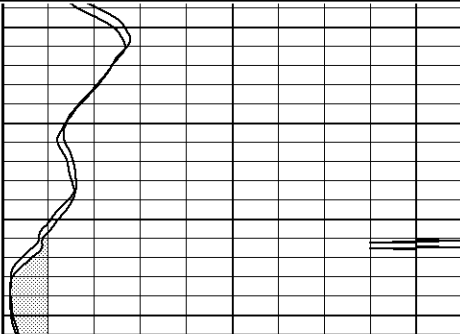
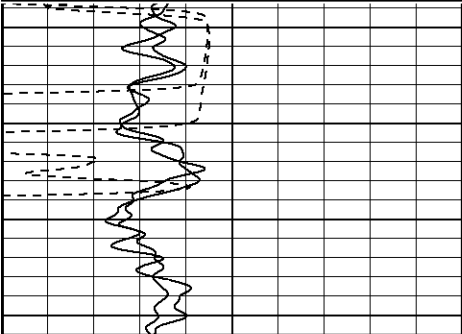
2200

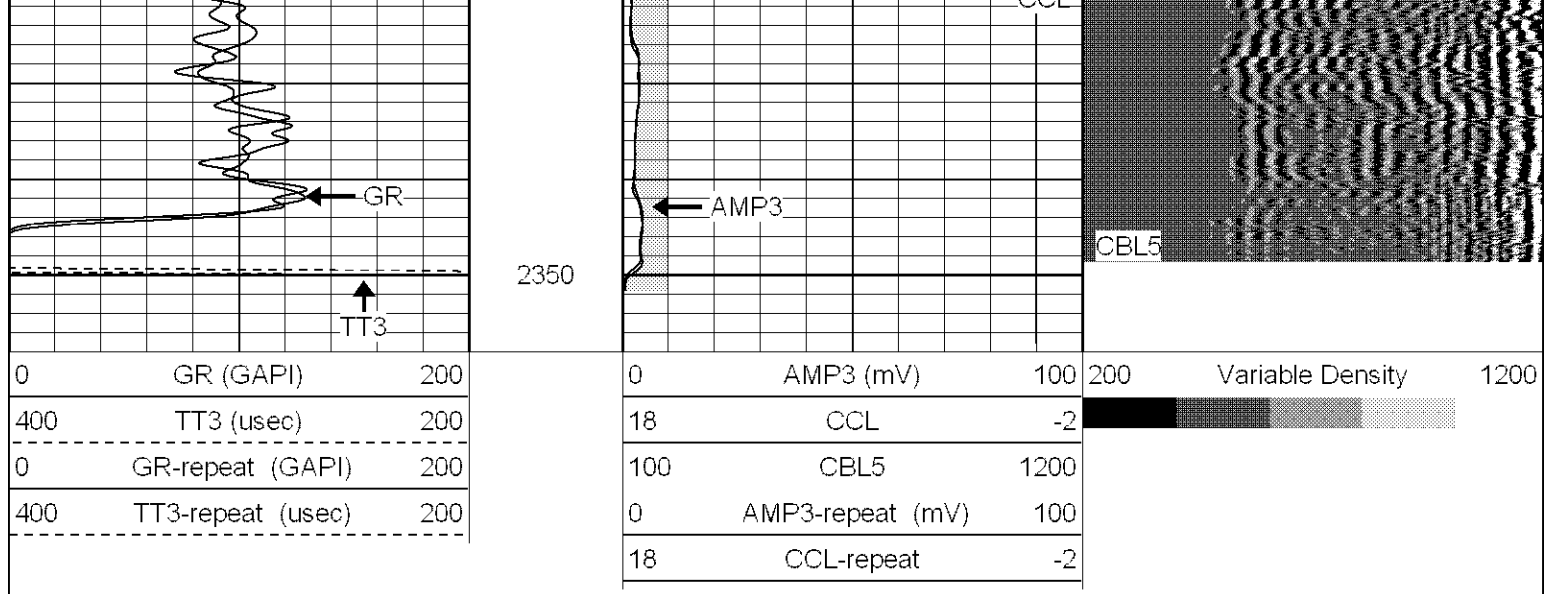


Database File: xtoac0504071906b.db
Dataset Pathname: pass1
Presentation Format: cblrt
Dataset Creation: Wed Jul 19 11:21:19 2006 by Log Warrior 7.0 STD Ope
Charted by: Depth in Feet scaled 1:240

0	GR (GAPI)	200
400	TT3 (usec)	200
0	GR-repeat (GAPI)	200
400	TT3-repeat (usec)	200

0	AMP3 (mV)	100	200	Variable Density	1200
18	CCL	-2			
100	CBL5	1200			
0	AMP3-repeat (mV)	100			
18	CCL-repeat	-2			





Cement Bond Log Calibration Report

Serial Number: Titan2
 Tool Model: 2
 Performed: Fri Jul 07 11:16:31 2006

Depth: 131.206 ft
 Casing Diameter: 5.5 in

	3' Spacing	5' Spacing	
Signal Zero:	1	1	mV
Calibrated Amplitude:	85	71.921	mV
Reading at Signal Zero:	0.00546875	0.00556641	V
Reading in Free Pipe:	1.86	1.48699	V
Gain:	45.2945	47.8736	
Offset:	0.752296	0.733516	

Gamma Ray Calibration Report

Serial Number: TITAN2
 Tool Model: T2
 Performed: Fri Jul 14 08:11:42 2006

Calibrator Value: 200.0 GAPI

Background Reading: 54.0 cps
 Calibrator Reading: 219.0 cps

Sensitivity: 1.2000 GAPI/cps

Sensor	Offset (ft)	Schematic	Description	Len (ft)	OD (in)	Wt (lb)
CBL	15.11			0.75	1.50	5.00

