



SUPERIOR
Black Lick, Pa.
Mercer, Pa.
Wooster, Oh.
Cleveland, Ok.
Trinidad, Co.

COMPENSATED DENSITY NEUTRON LOG

Company	XTO Energy Inc.		
Well	Apache Canyon 35-14-2		
Field	Purgatoire River		
County	Las Animas	State	Colorado
Location:	API # : 05 071 09233 00		Other Services
1077' FSL & 2121' FWL		DIL	
Permanent Datum	SEC 35	TWP 33S	RGE 67W
Log Measured From	Ground Level	Elevation	7008'
Drilling Measured From	Ground Level	Elevation	7008'
Date	4-29-07		
Run Number	Two		
Depth Driller	1750'		
Depth Logger	1750'		
Bottom Logged Interval	1748'		
Top Log Interval	Surface Casing		
Casing Driller	8 5/8" @ 494'		
Casing Logger	494'		
Bit Size	7 7/8"		
Type Fluid in Hole	Water		
Density / Viscosity	///		
pH / Fluid Loss	///		
Source of Sample	///		
Rm @ Meas. Temp	///		
Rmf @ Meas. Temp	///		
Rmc @ Meas. Temp	///		
Source of Rmf / Rmc	///		
Rm @ BHT	///		
Time Circulation Stopped	1:00 P.M.		
Time Logger on Bottom	4:00 P.M.		
Maximum Recorded Temperature	95 DEG F		
Equipment Number	T0697		
Location	Trinidad		
Recorded By	M. Norton		
Witnessed By	Mr. Don Johnson		

>>> Fold Here >>>

All interpretations are opinions based on inferences from electrical or other measurements and we cannot and do not guarantee the accuracy or correctness of any interpretation, and we shall not, except in the case of gross or willful negligence on our part, be liable or responsible for any loss, costs, damages, or expenses incurred or sustained by anyone resulting from any interpretation made by any of our officers, agents or employees. These interpretations are also subject to our general terms and conditions set out in our current Price Schedule.

Comments

Density Neutron Porosity Presented On Sandstone Matrix.
ABHV Calculated For 5 1/2" Casing
Well Directions:
First Bosque entrance just before Weston,
first right just after compressor (thru contractor yard)

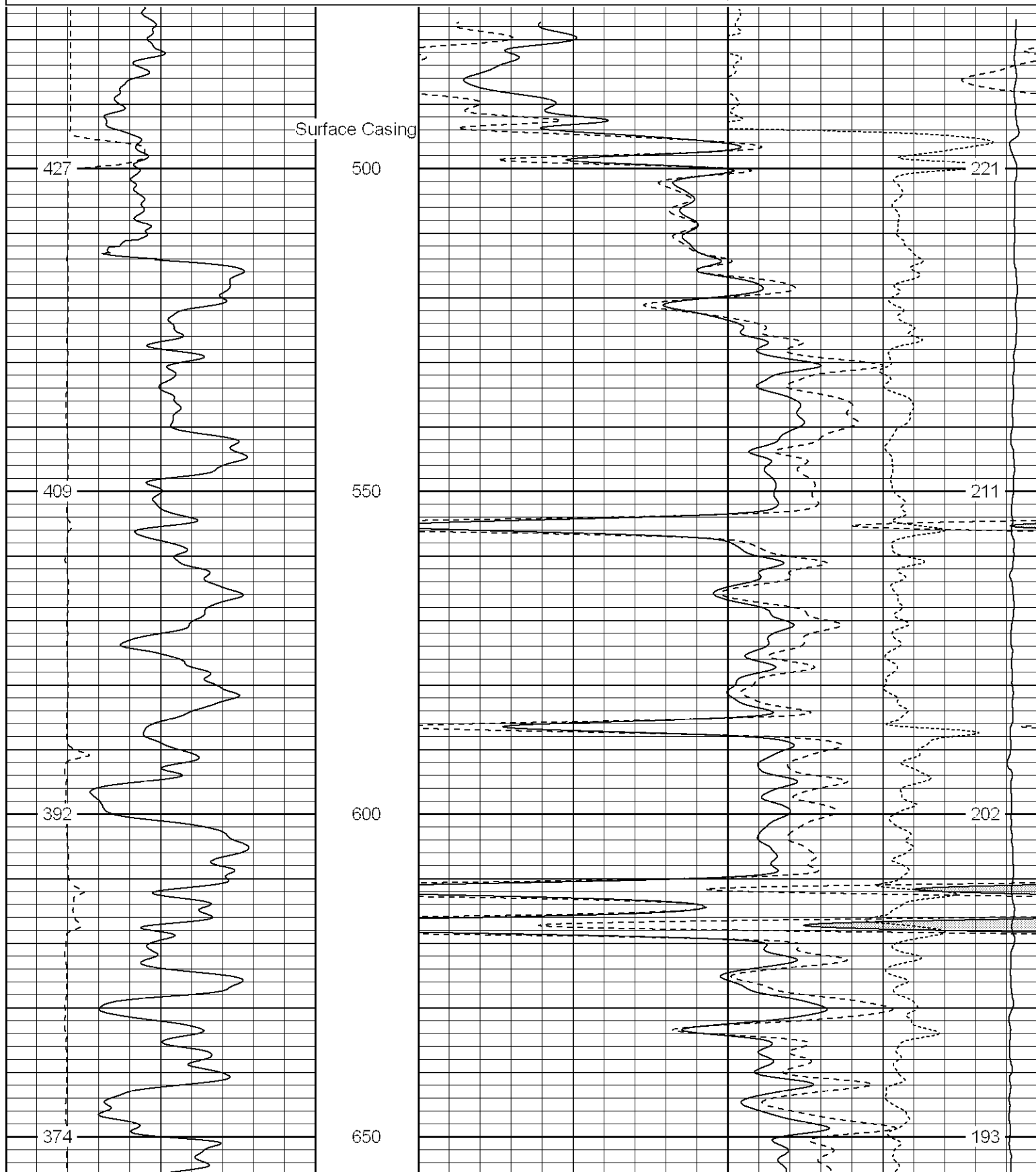


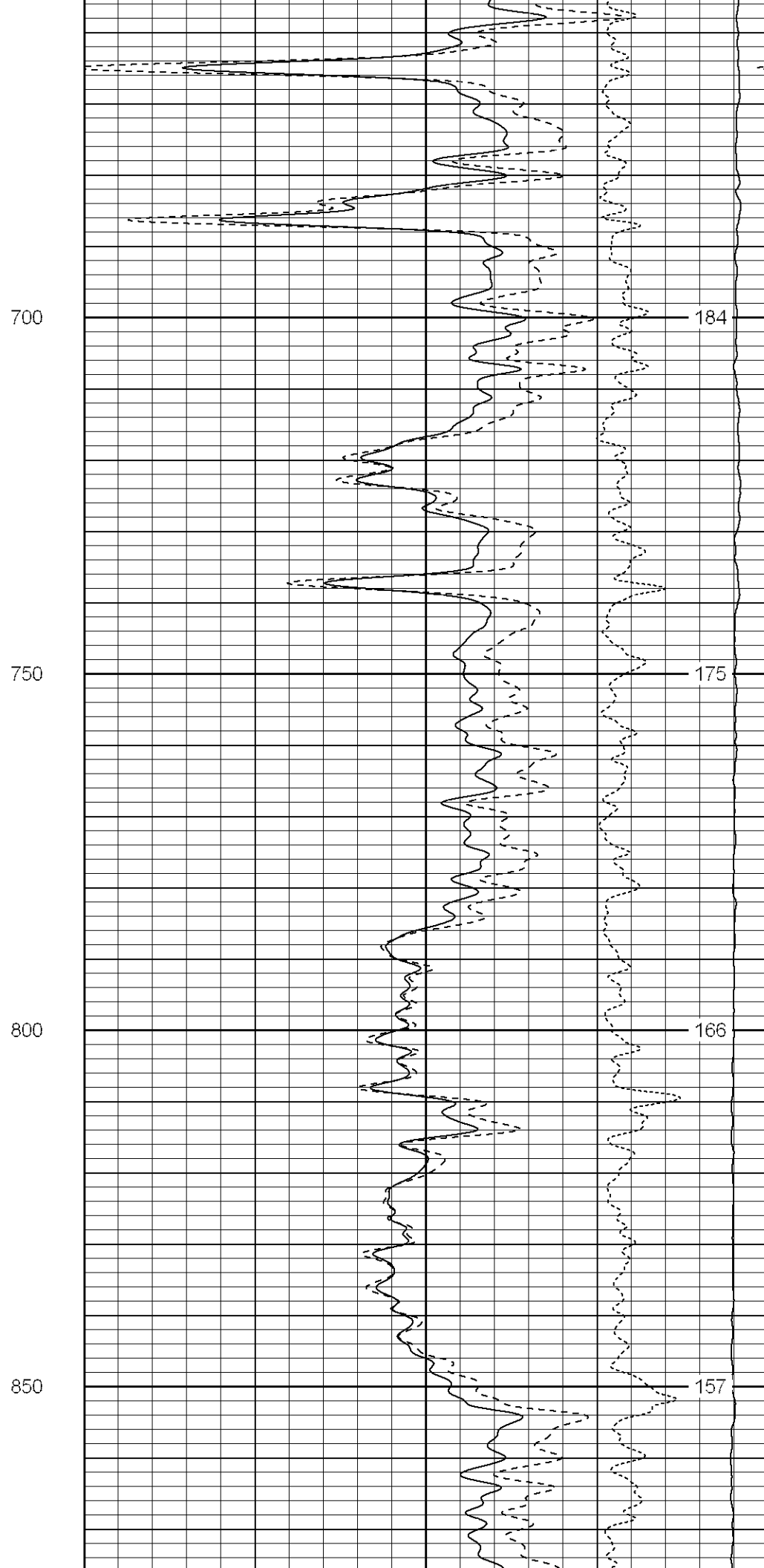
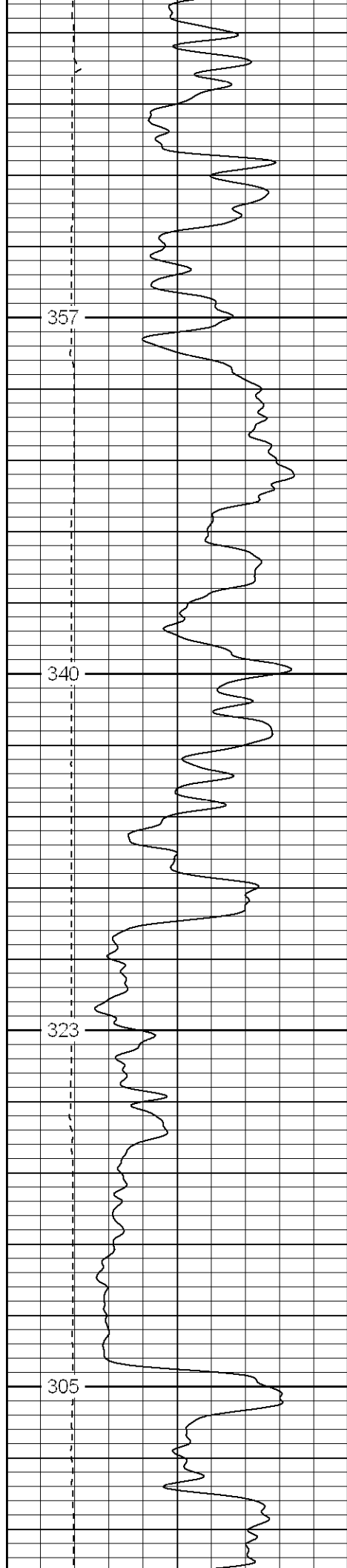
SUPERIOR
Black Lick, Pa.
Mercer, Pa.
Wooster, Oh.
Cleveland, Ok.
Trinidad, Co.

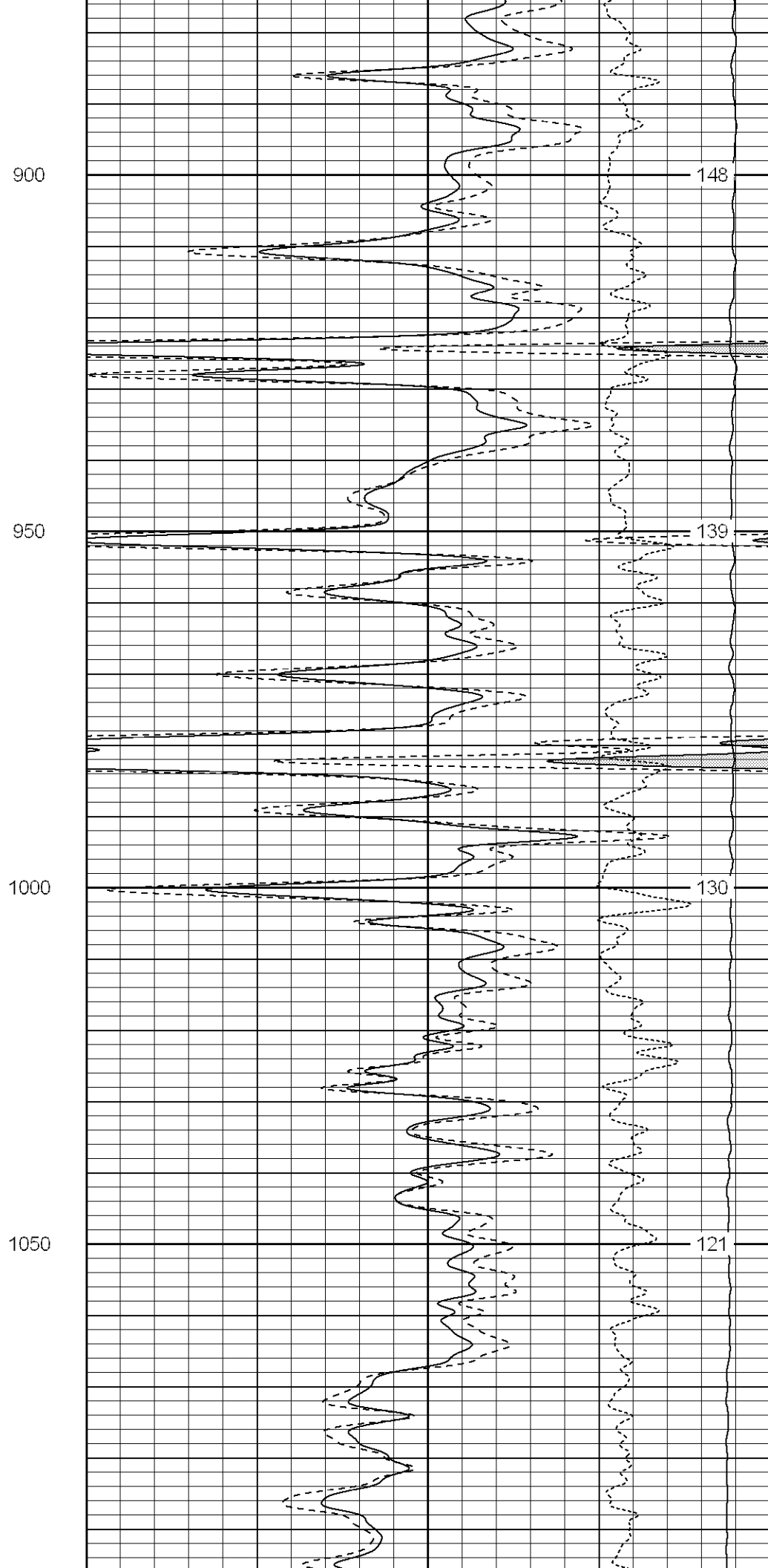
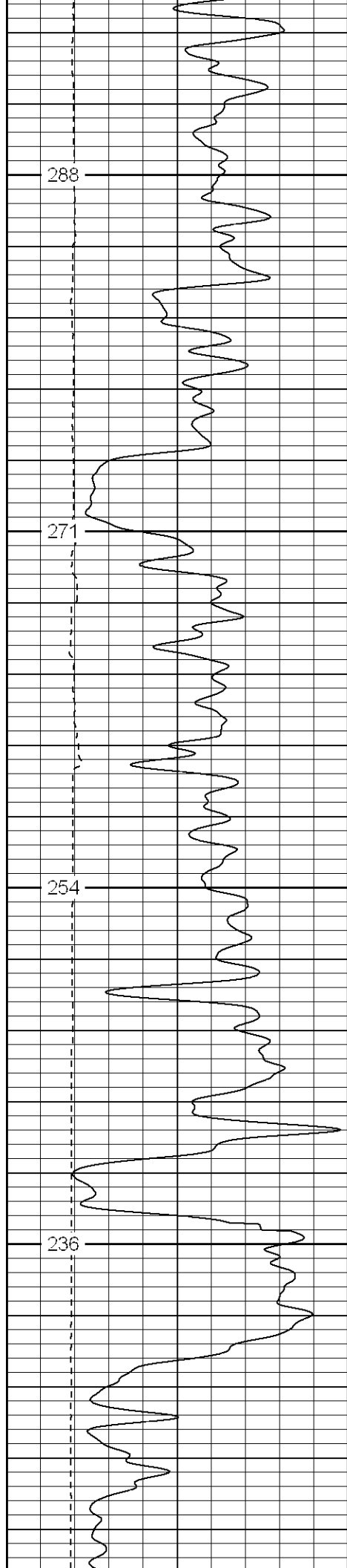
Main Pass

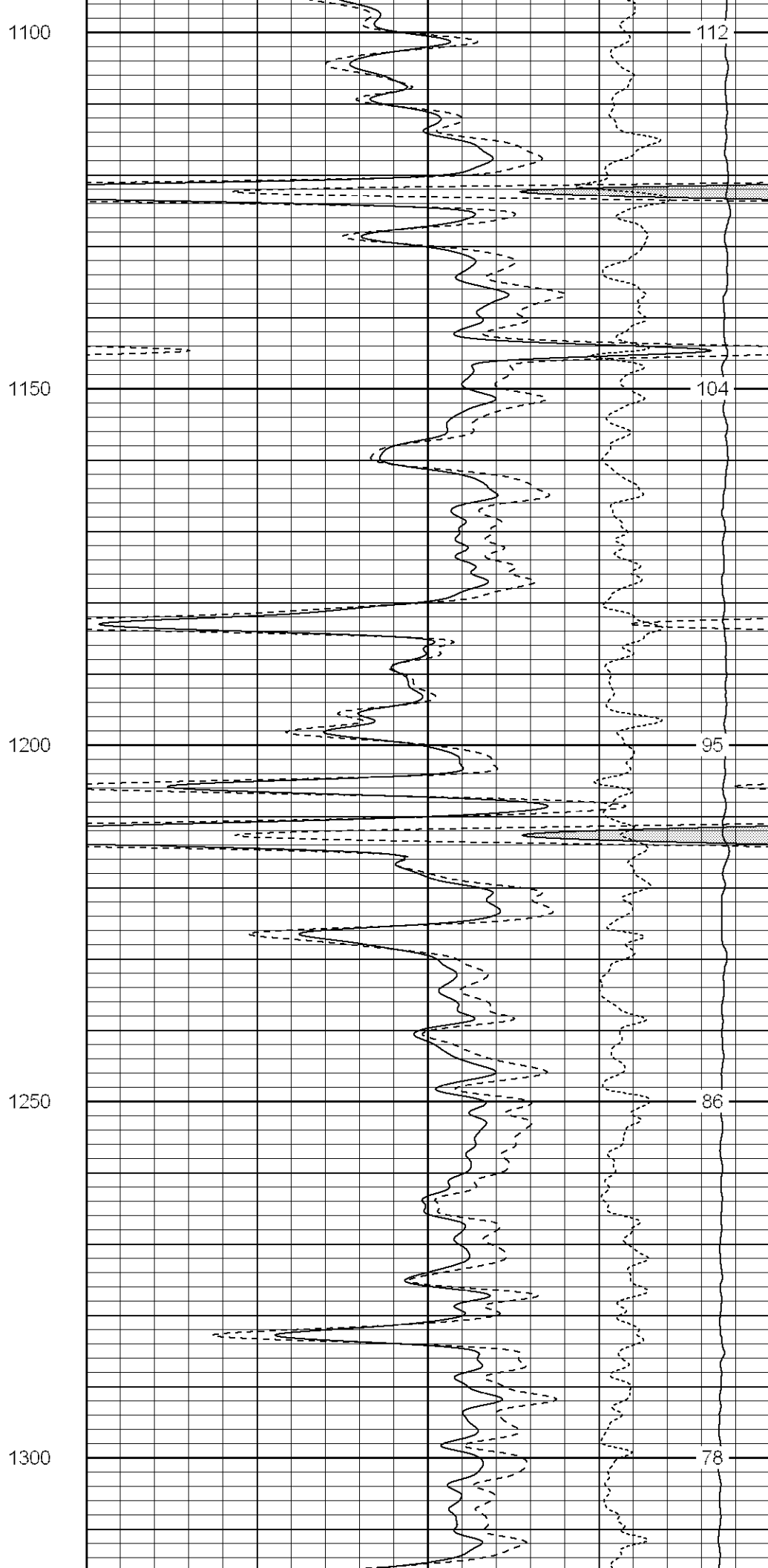
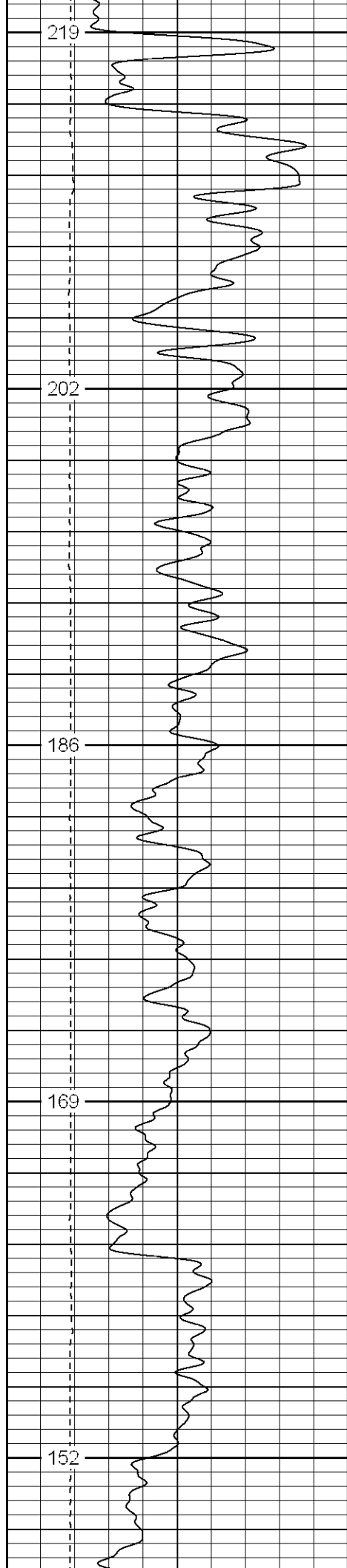
Database File: xtoac35142.db
Dataset Pathname: pass4.1
Presentation Format: cdl
Dataset Creation: Sun Apr 29 17:01:40 2007 by Calc Open-Cased 061129
Charted by: Depth in Feet scaled 1:240

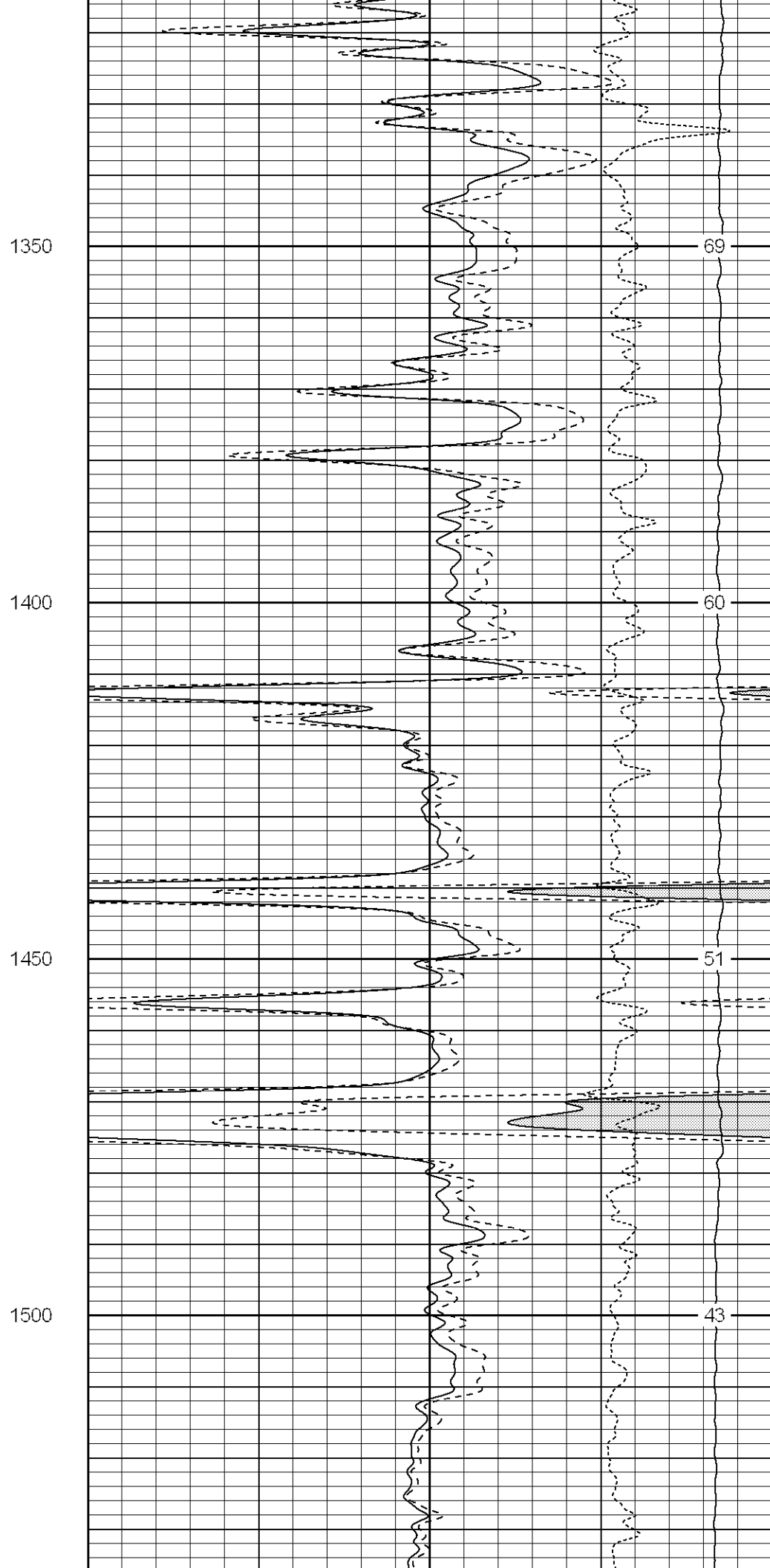
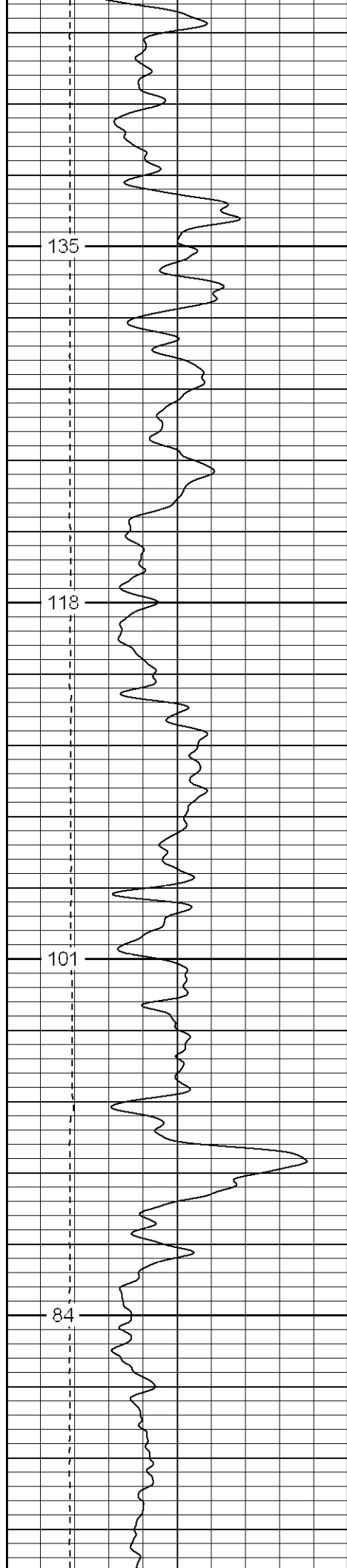
0	GR (GAPI)	200	1	RHOB (g/cc)	2
6	DCAL (in)	16	30	DPOR (pu)	-10
			-0.5	RHOC (g/cc)	0.5
			4000	LTEN (lb)	0

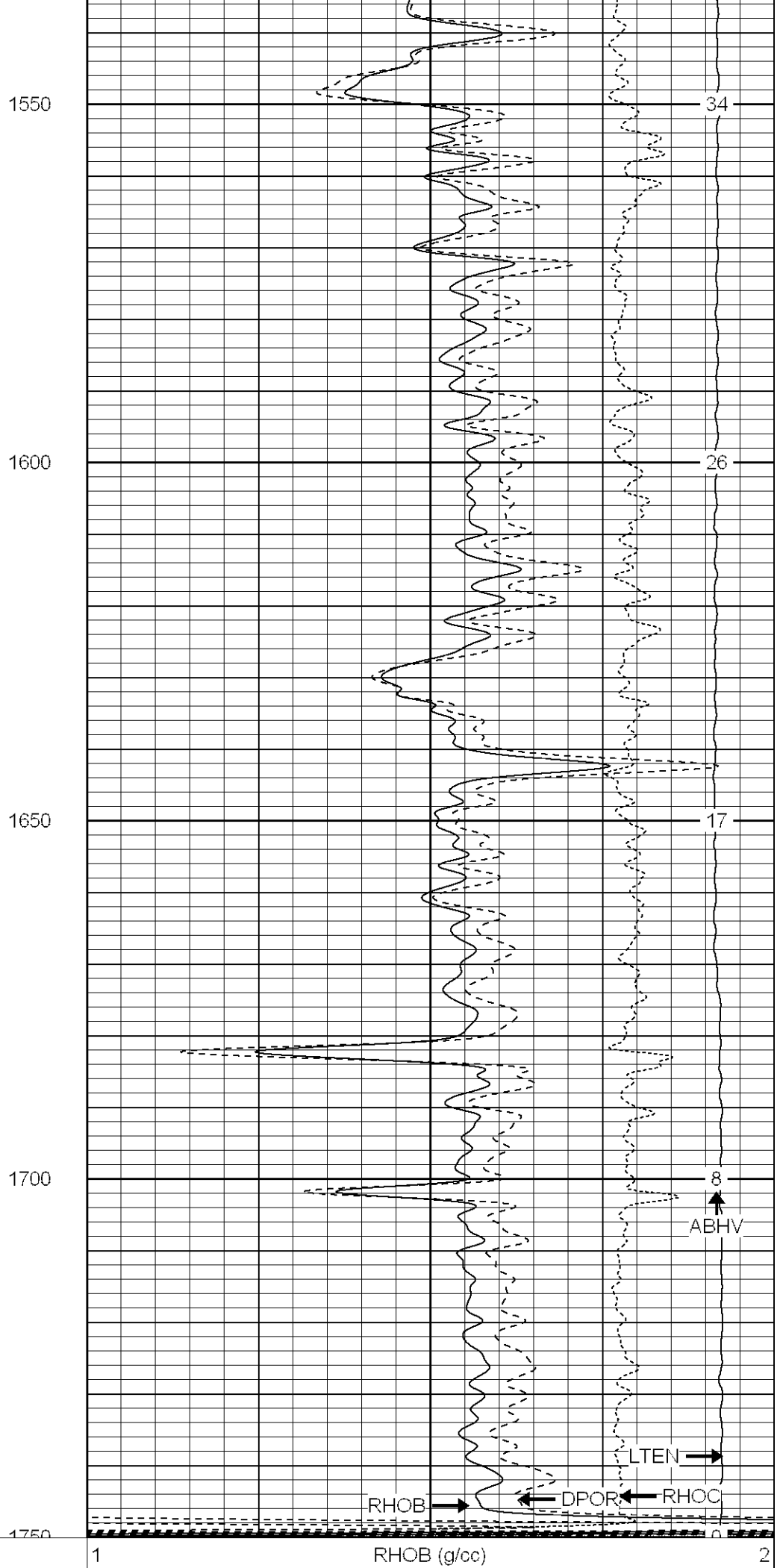
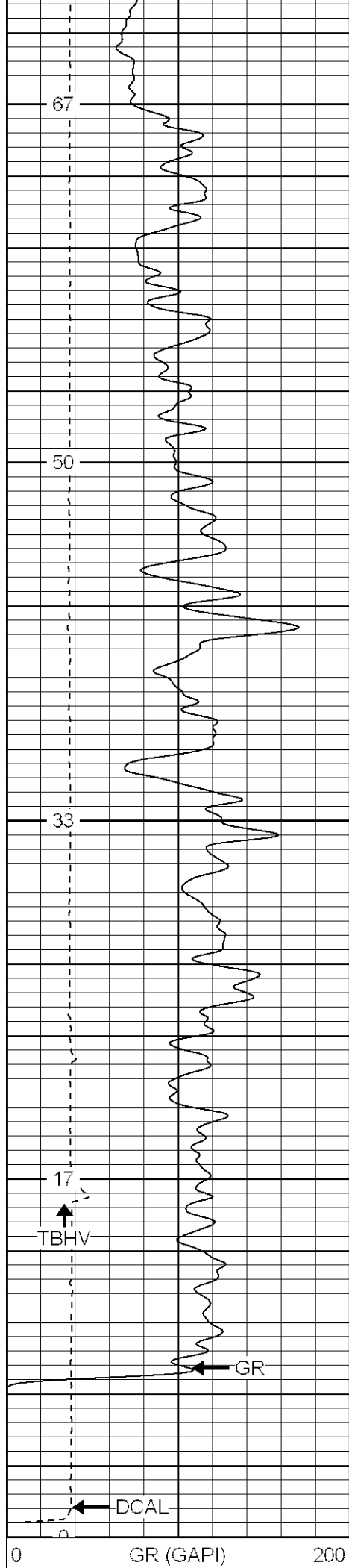












6	DCAL (in)	16	30	DPOR (pu)	-10	
				-0.5	RHOC (g/cc)	0.5
				4000	LTEN (lb)	0



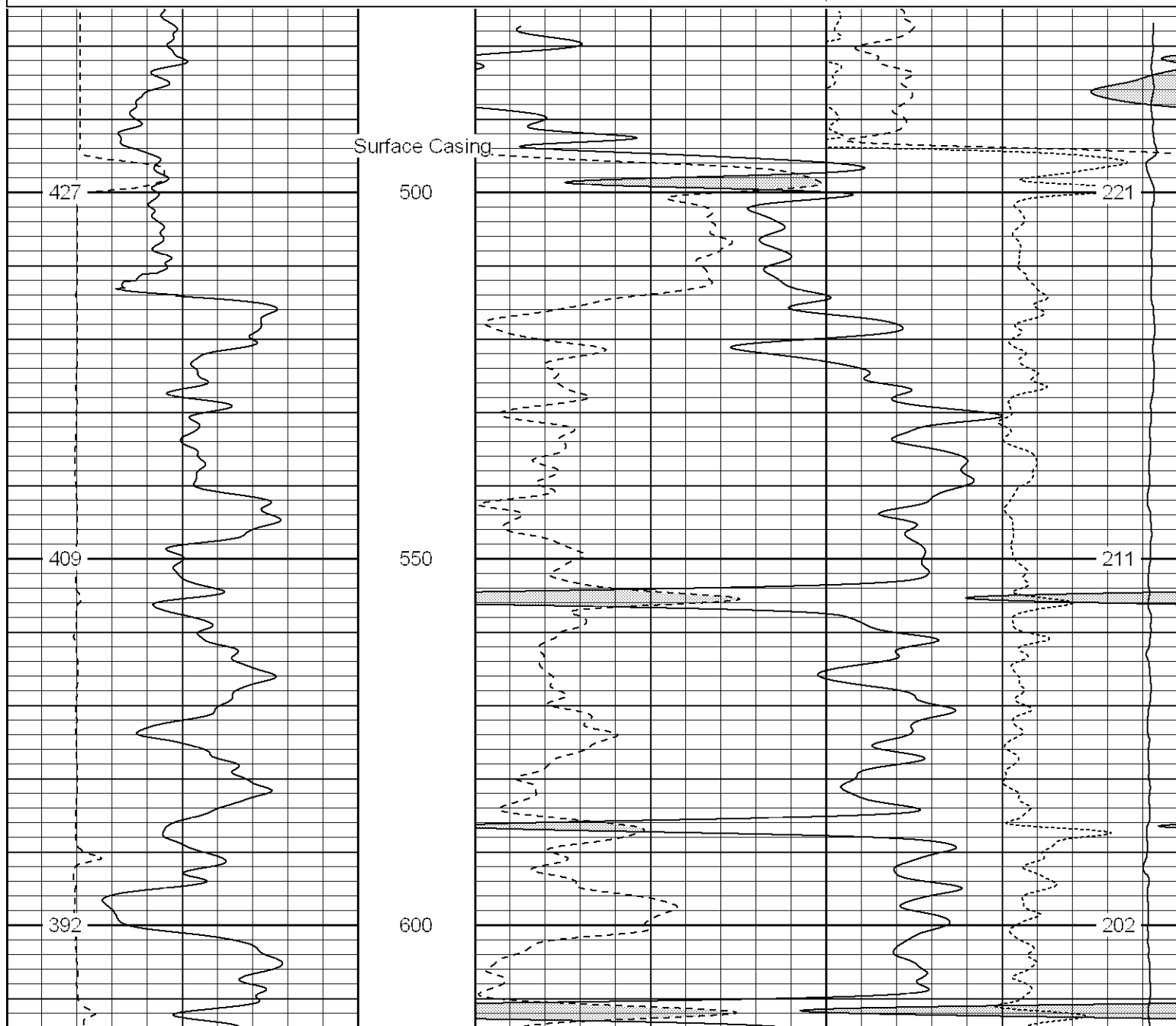
SUPERIOR

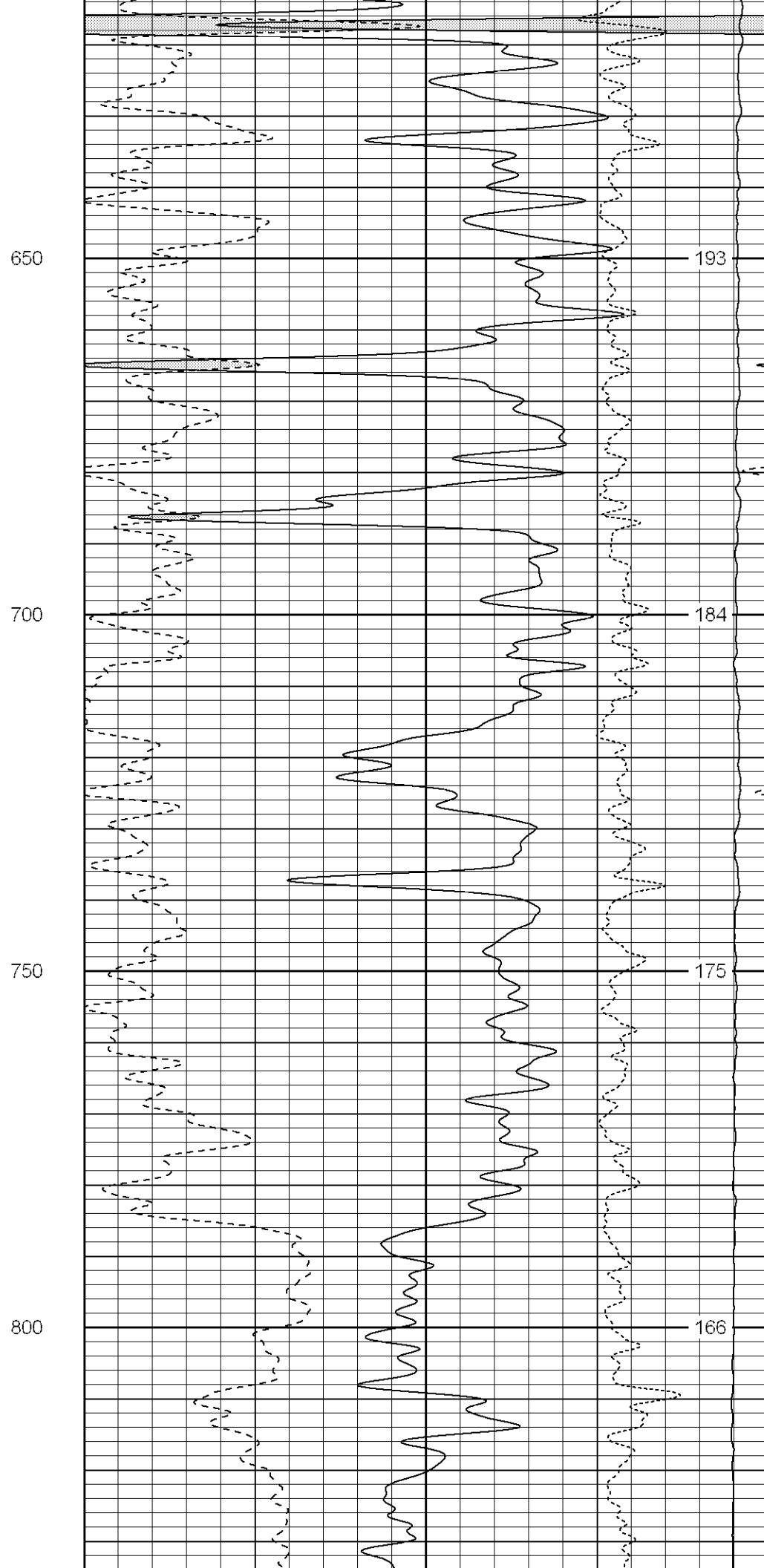
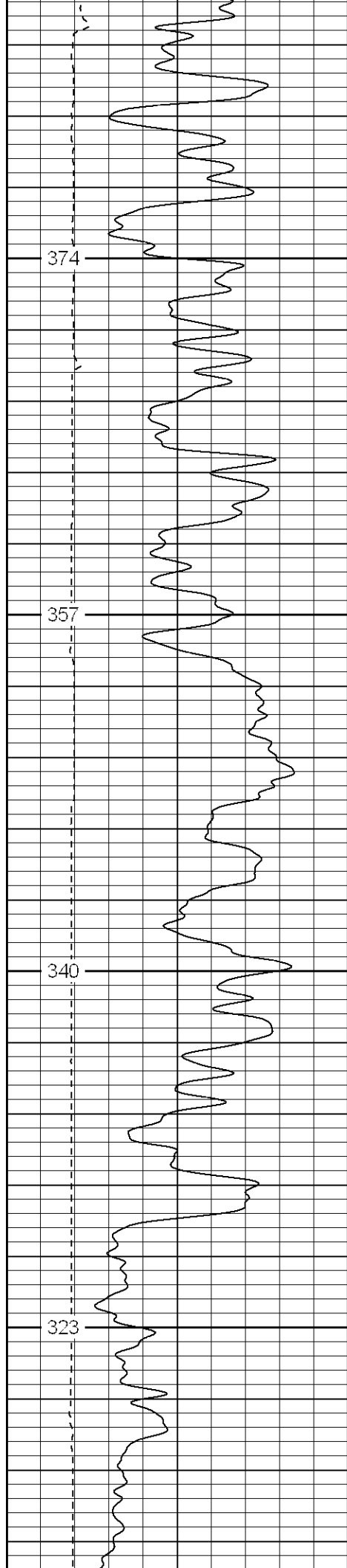
Black Lick, Pa.
Meroer, Pa.
Wooster, Oh.
Cleveland, Ok.
Trinidad, Co.

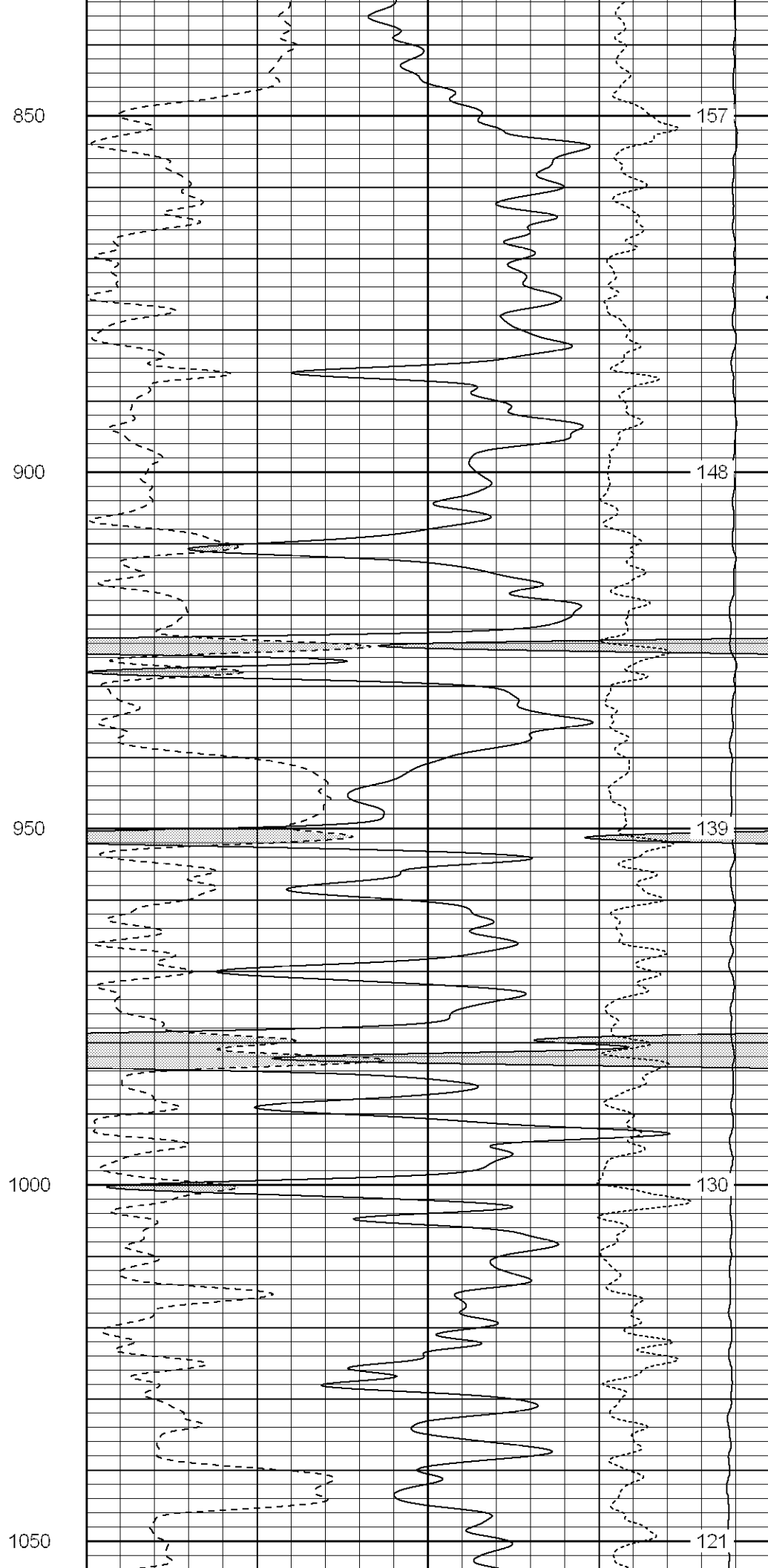
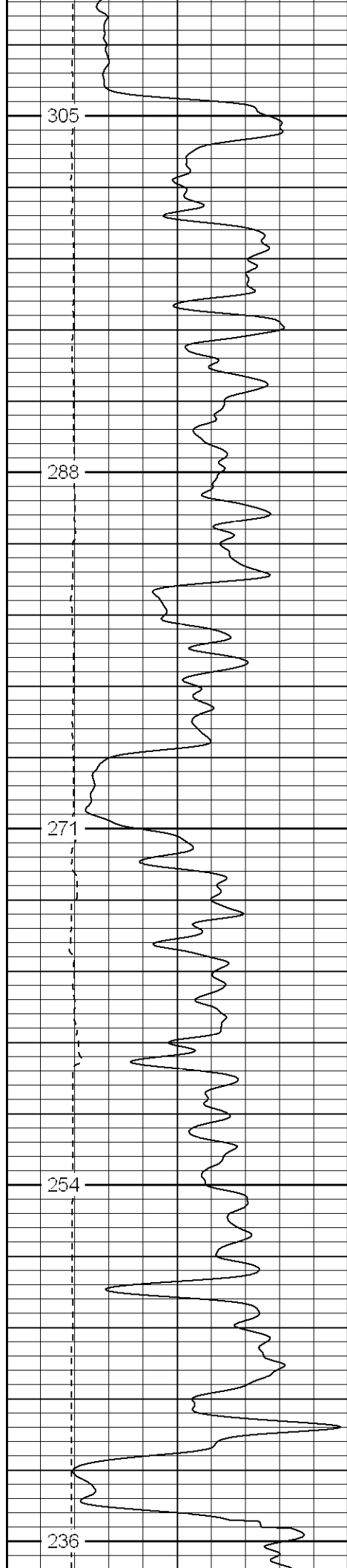
Main Pass

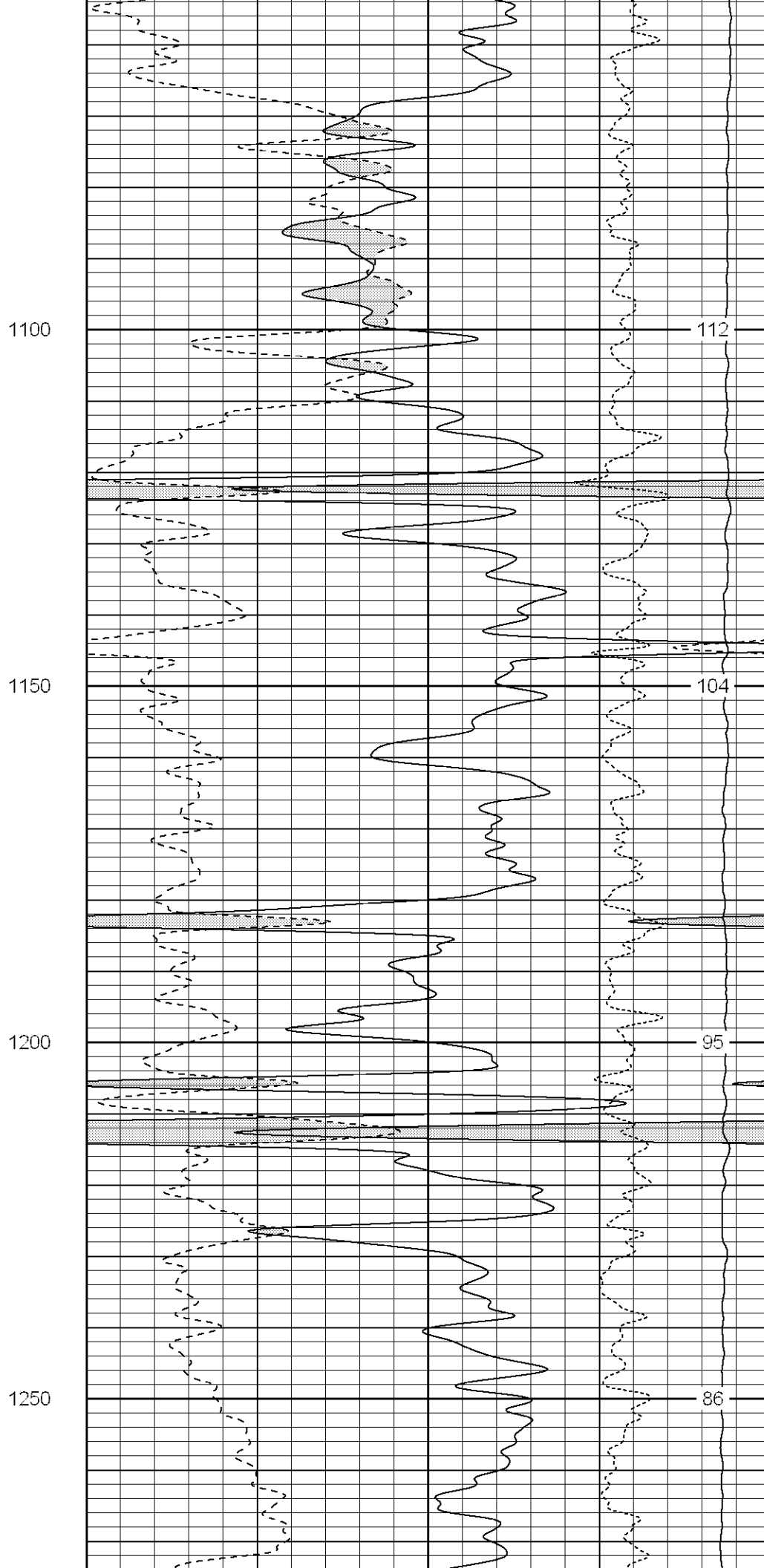
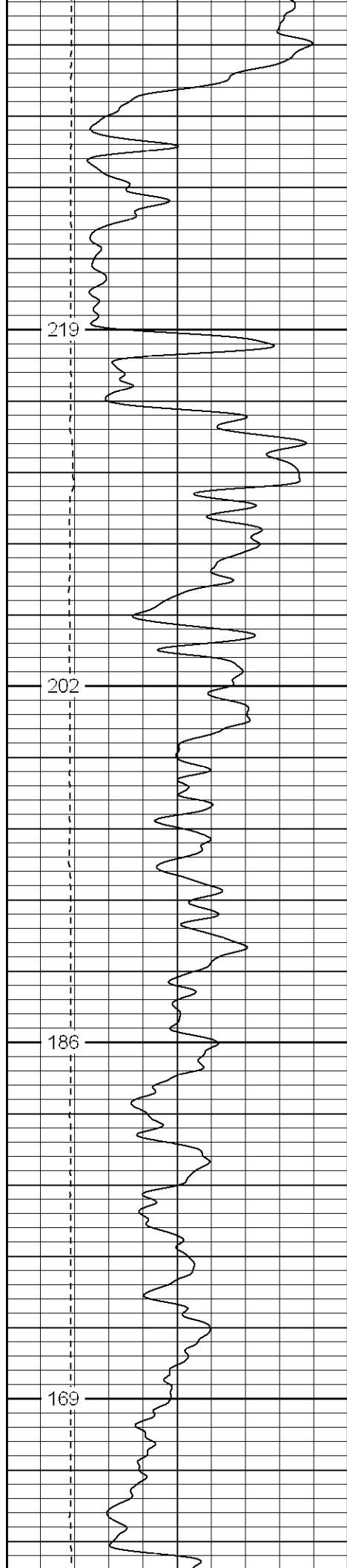
Database File: xtoac35142.db
Dataset Pathname: pass4.1
Presentation Format: cdnl
Dataset Creation: Sun Apr 29 17:01:40 2007 by Calc Open-Cased 061129
Charted by: Depth in Feet scaled 1:240

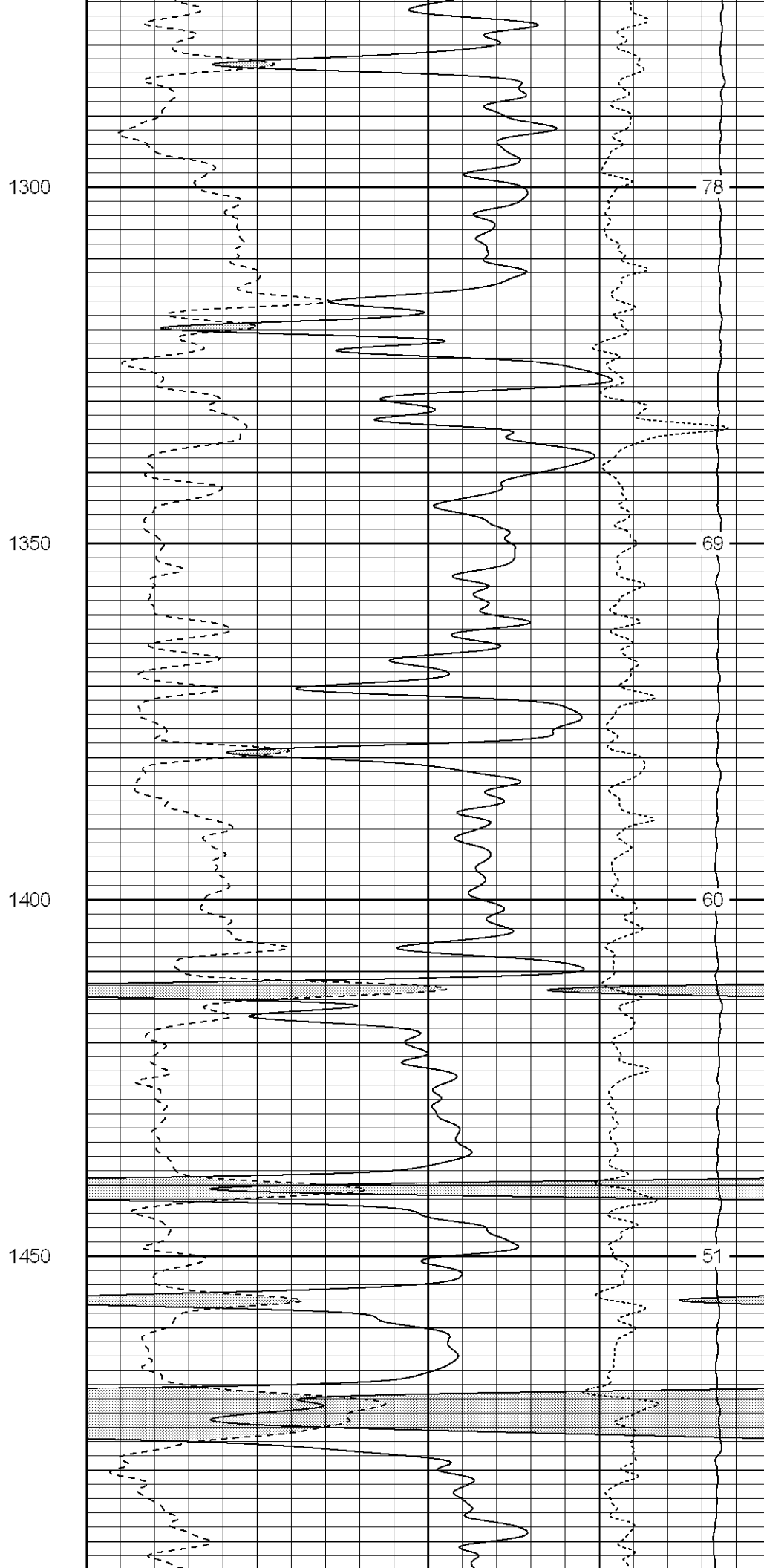
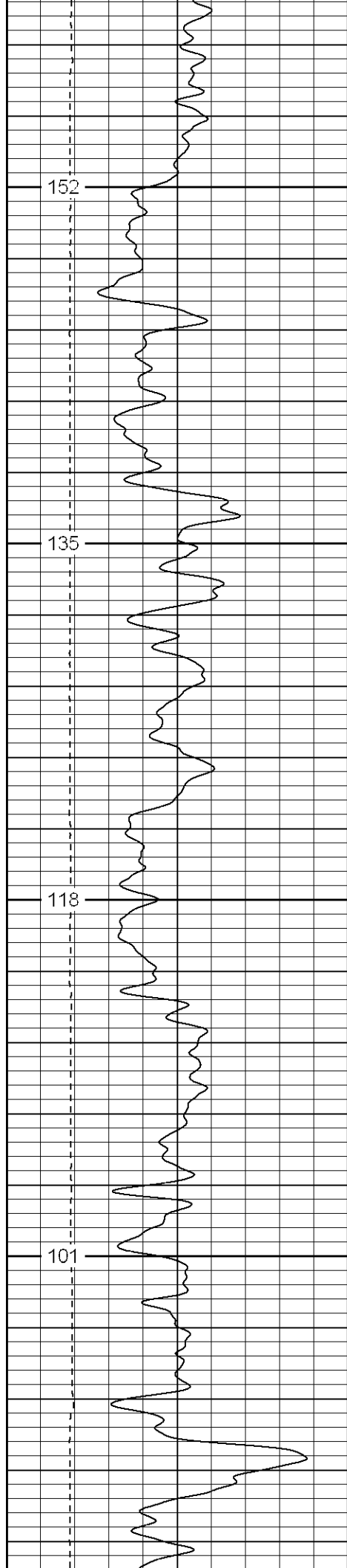
0	GR (GAPI)	200	30	NPOR (pu)	-10	
6	DCAL (in)	16	30	DPOR (pu)	-10	
				-0.5	RHOC (g/cc)	0.5
				4000	LTEN (lb)	0

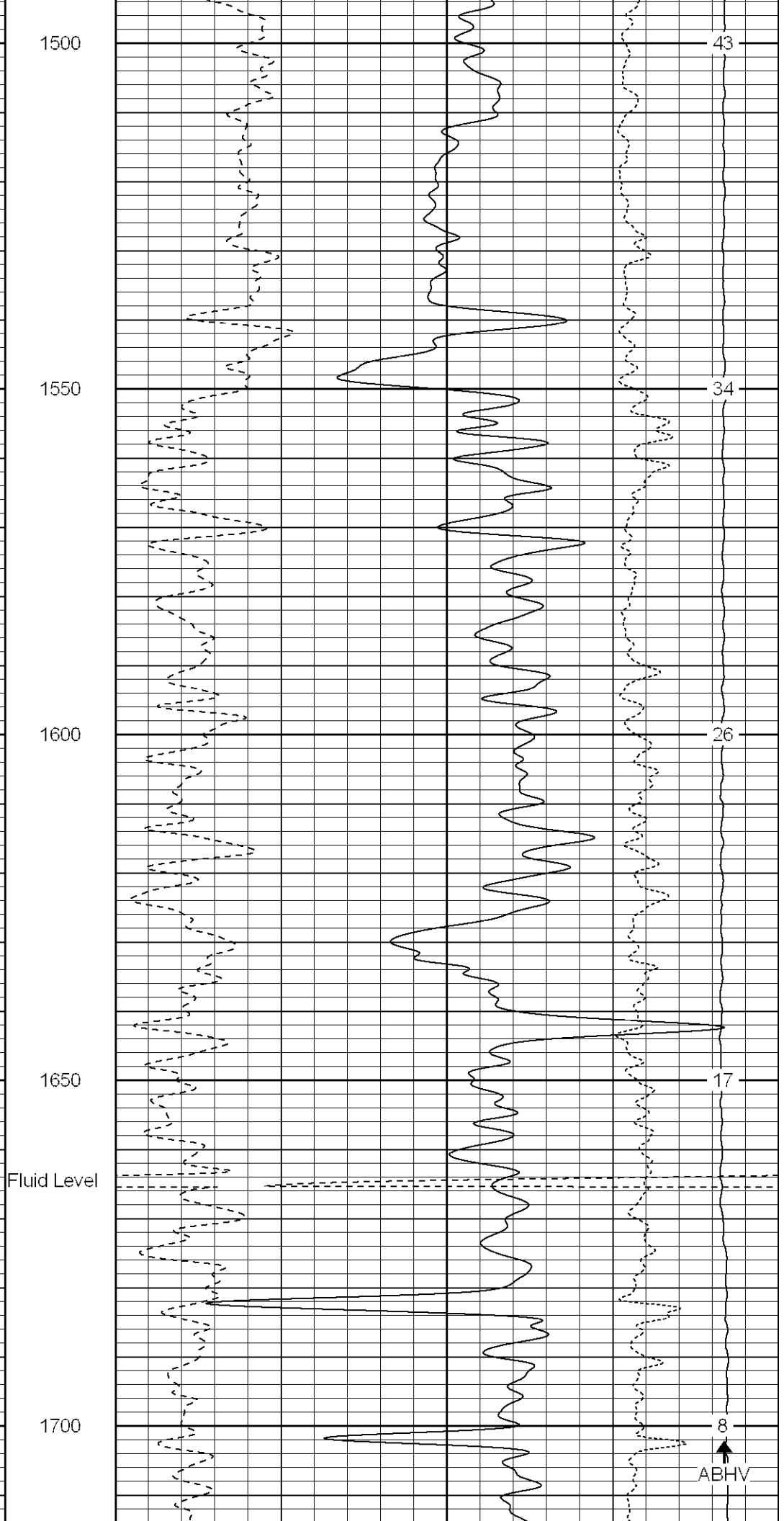
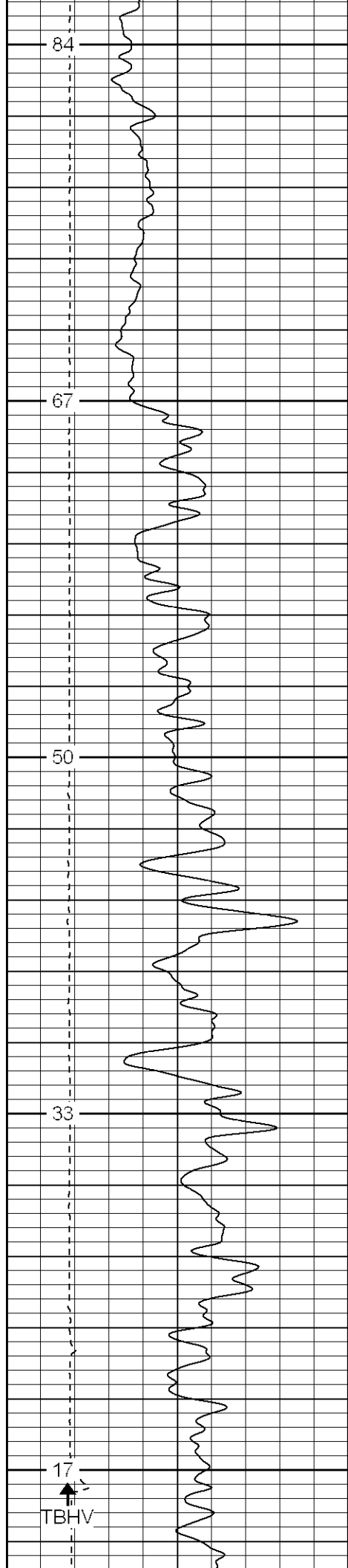


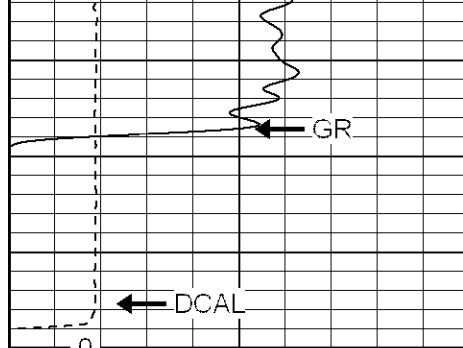






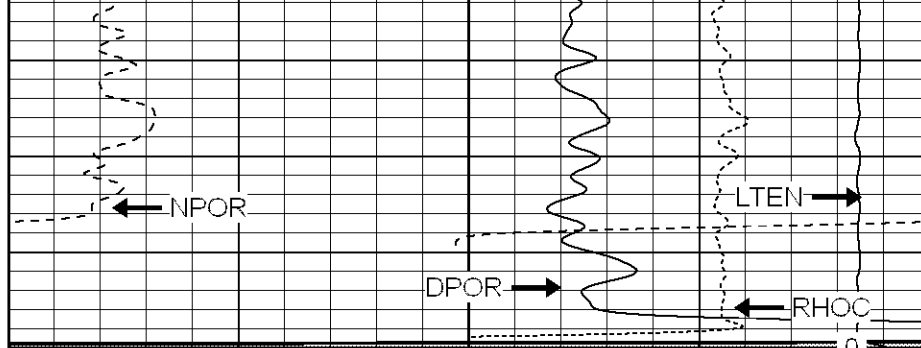






0	GR (GAPI)	200
6	DCAL (in)	16

1750



30	NPOR (pu)	-10
30	DPOR (pu)	-10
-0.5	RHOC (g/cc)	0.5
4000	LTEN (lb)	0



SUPERIOR

Black Lick, Pa.
Meroer, Pa.
Wooster, Oh.
Cleveland, Ok.
Trinidad, Co.

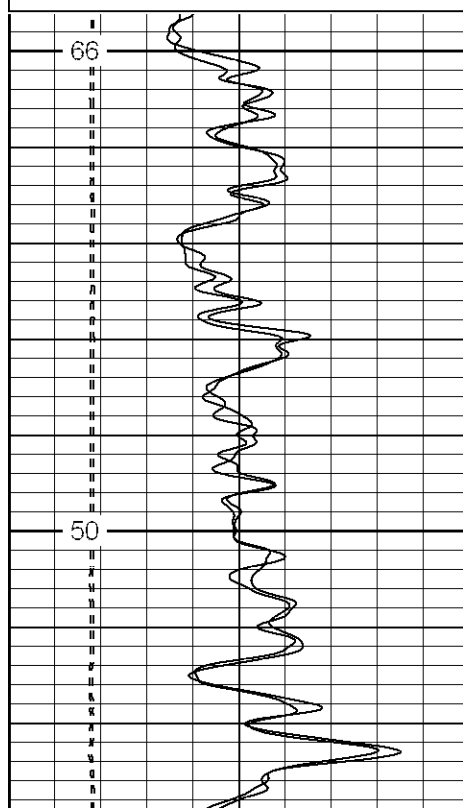
Repeat Section

Database File: xtoac35142.db
Dataset Pathname: pass3.1
Presentation Format: cdnl
Dataset Creation: Sun Apr 29 16:49:20 2007 by Calc Open-Cased 061129
Charted by: Depth in Feet scaled 1:240

0	GR (GAPI)	200
6	DCAL (in)	16
0	GR-repeat (GAPI)	200
6	DCAL-repeat (in)	16

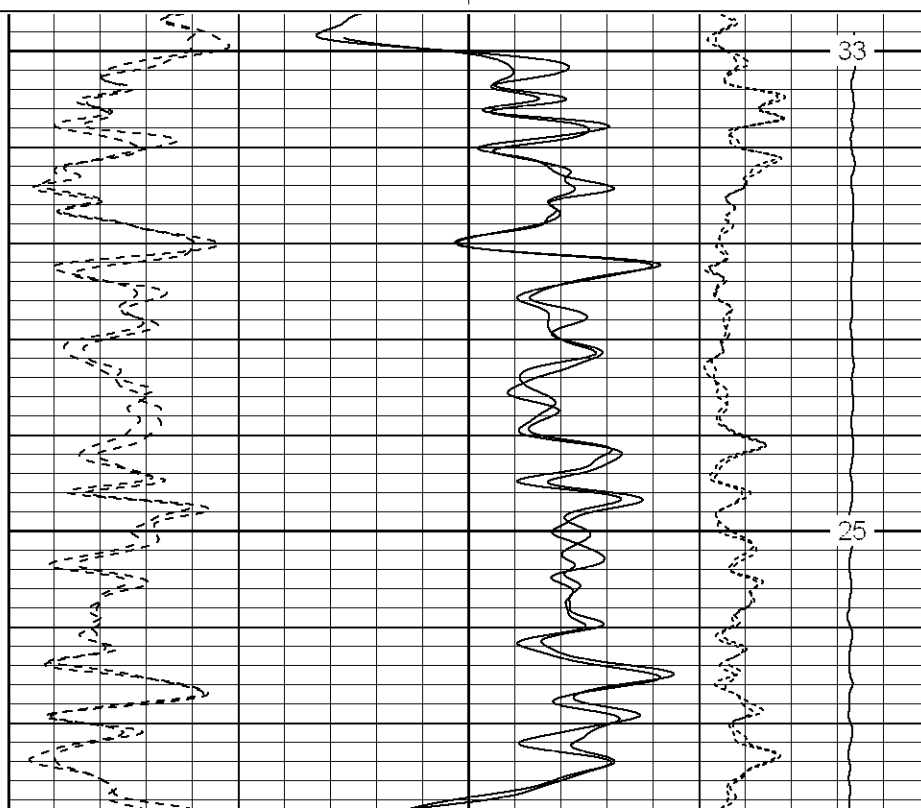
30	NPOR (pu)	-10
30	DPOR (pu)	-10
30	NPOR-repeat (pu)	-10
30	DPOR-repeat (pu)	-10

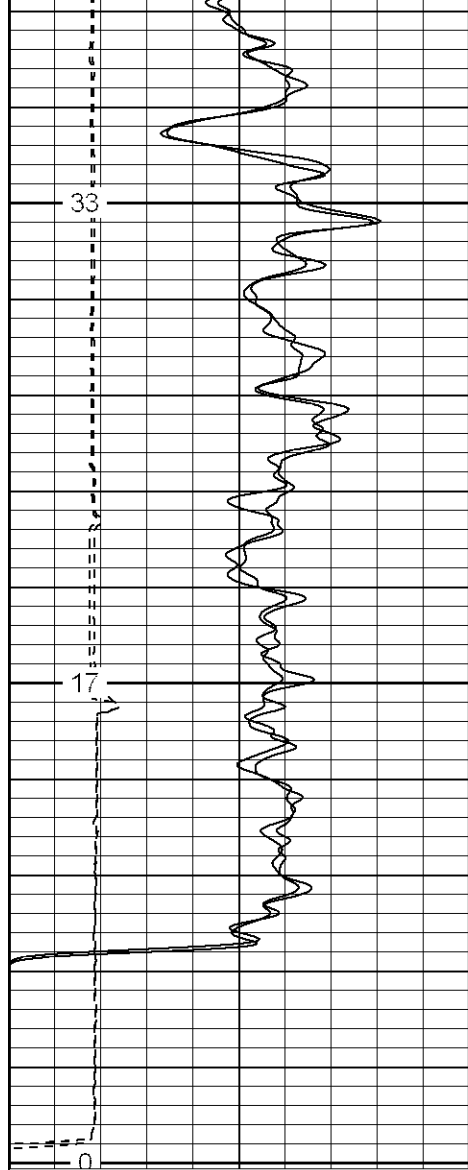
-0.5	RHOC (g/cc)	0.5
4000	LTEN (lb)	0
-0.5	RHOC-repeat (g/cc)	0.5



1550

1600



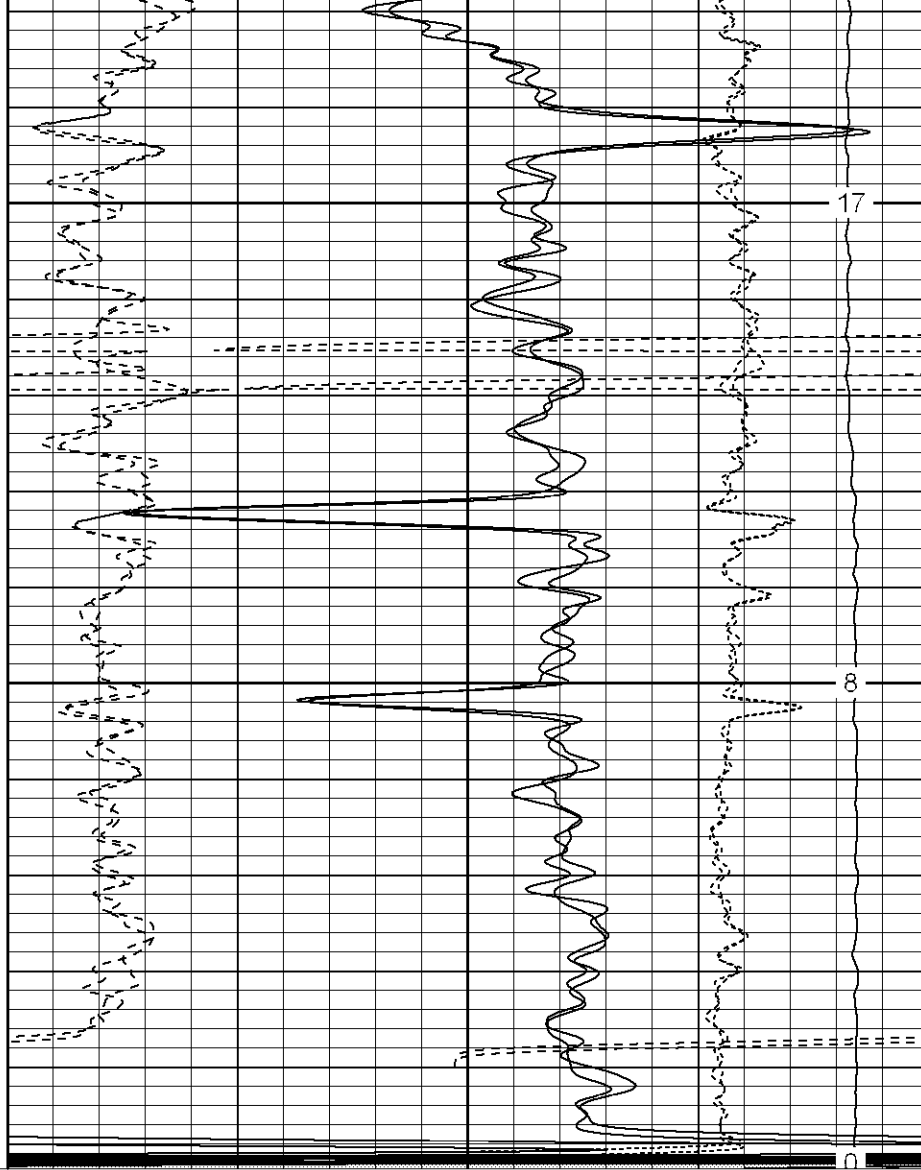


0	GR (GAPI)	200
6	DCAL (in)	16
0	GR-repeat (GAPI)	200
6	DCAL-repeat (in)	16

1650

1700

1750



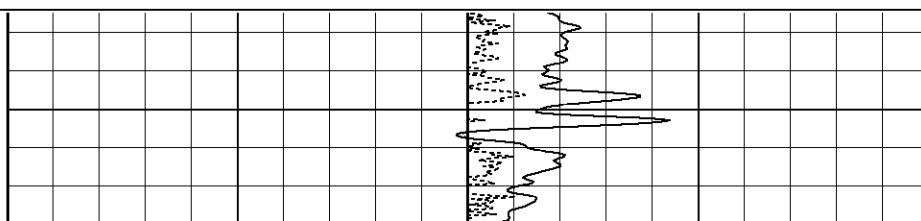
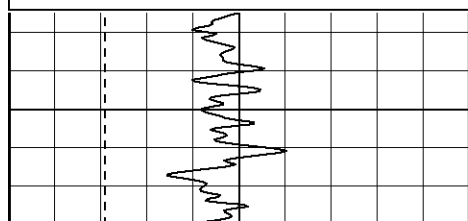
30	NPOR (pu)	-10
30	DPOR (pu)	-10
30	NPOR-repeat (pu)	-10
30	DPOR-repeat (pu)	-10

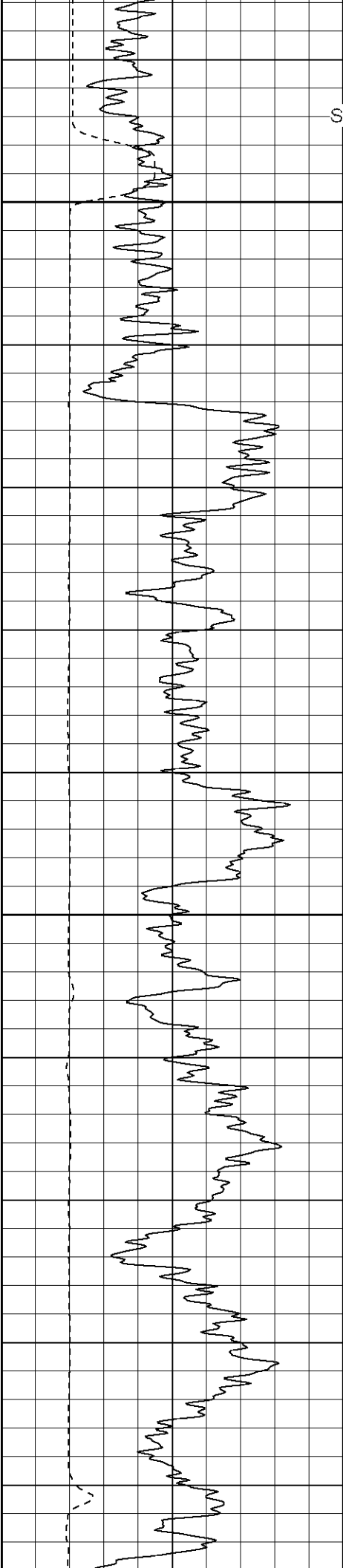
-0.5	RHOC (g/cc)	0.5
4000	LTEN (lb)	0
-0.5	RHOC-repeat (g/cc)	0.5

Database File: xtoac35142.db
 Dataset Pathname: pass4.2
 Presentation Format: cdlhr
 Dataset Creation: Mon Apr 30 07:11:09 2007 by Calc Open-Cased 061129
 Charted by: Depth in Feet scaled 1:120

0	GR (GAPI)	200
6	DCAL (in)	16

1	RHOB (g/cc)	3
-0.5	RHOC (g/cc)	0.5

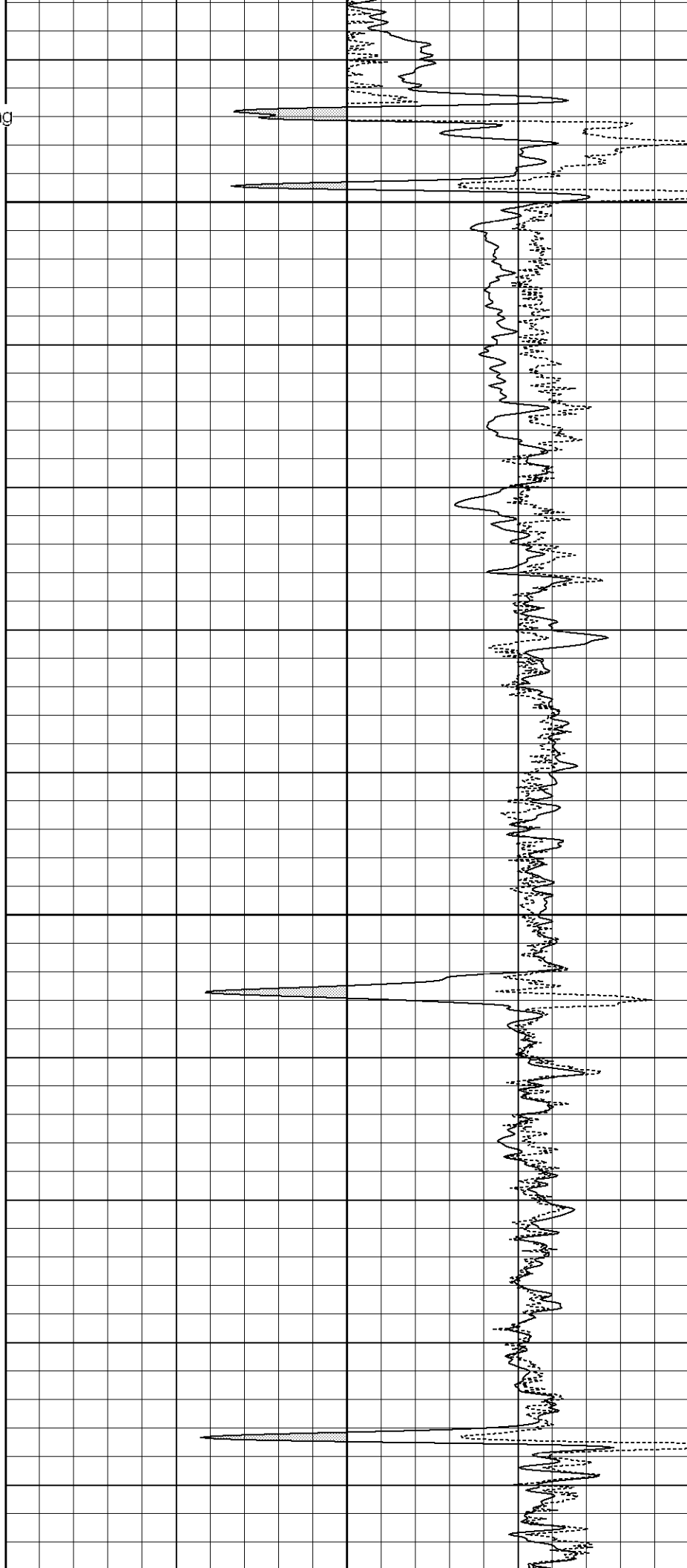


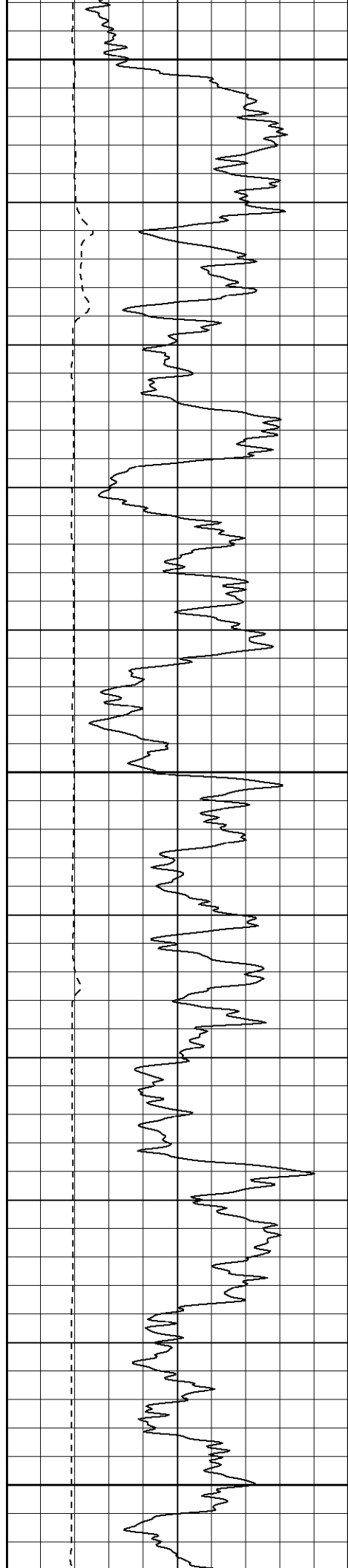


Surface Casing

500

550

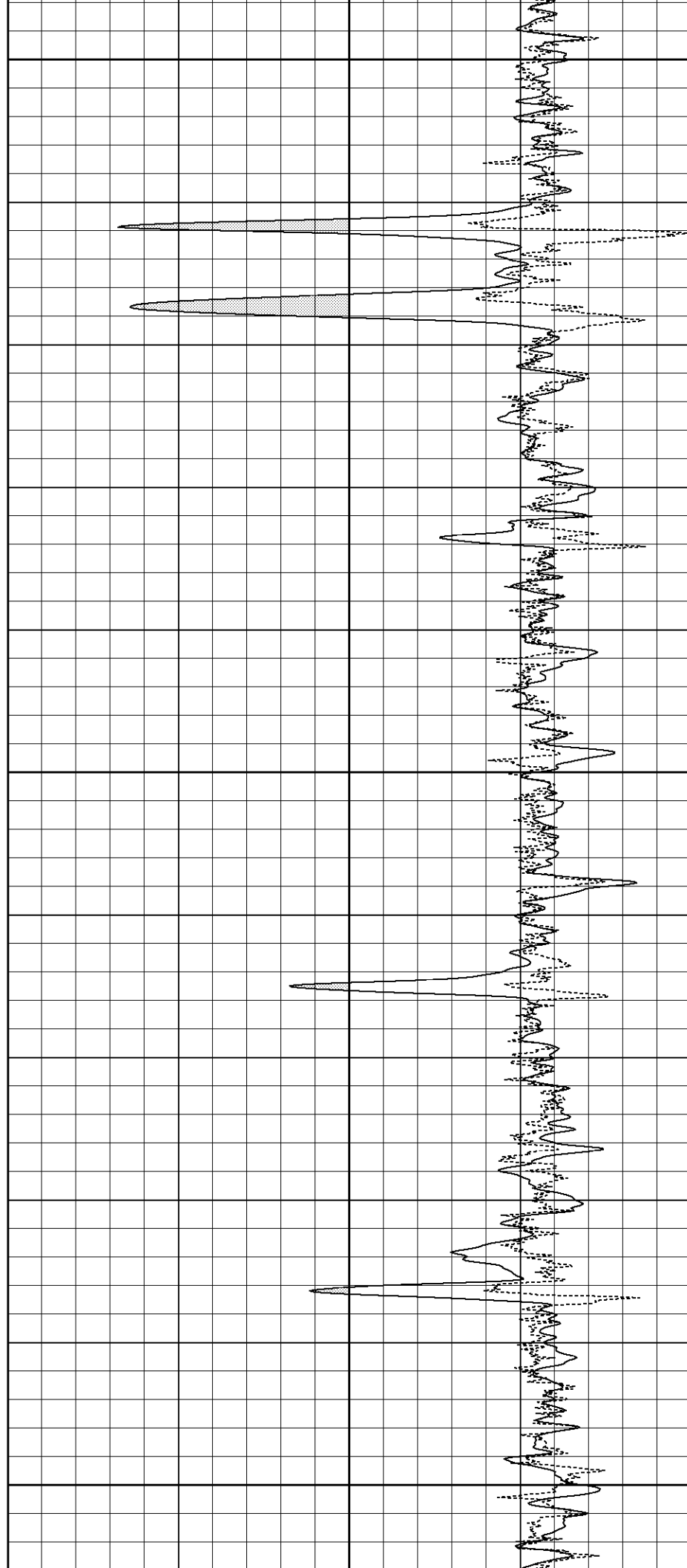


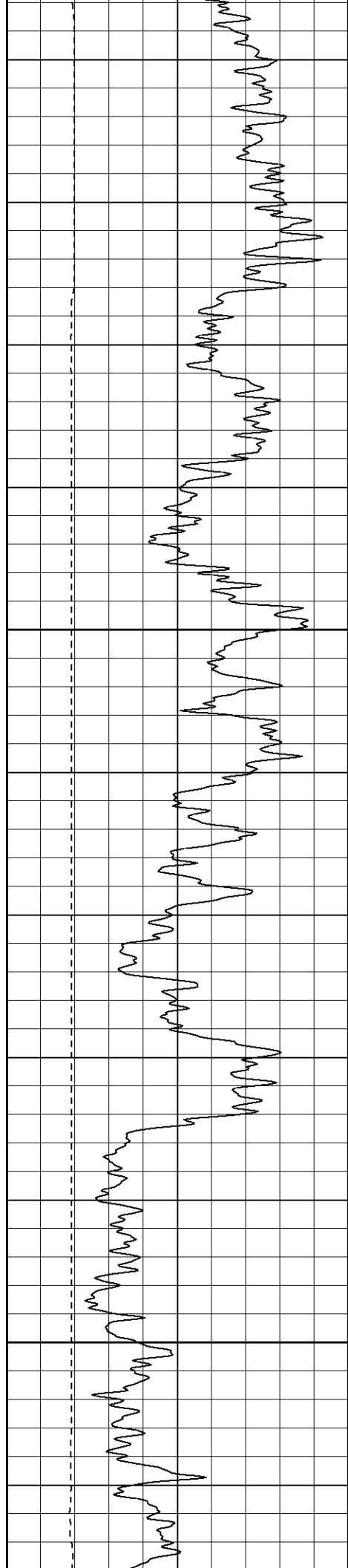


600

650

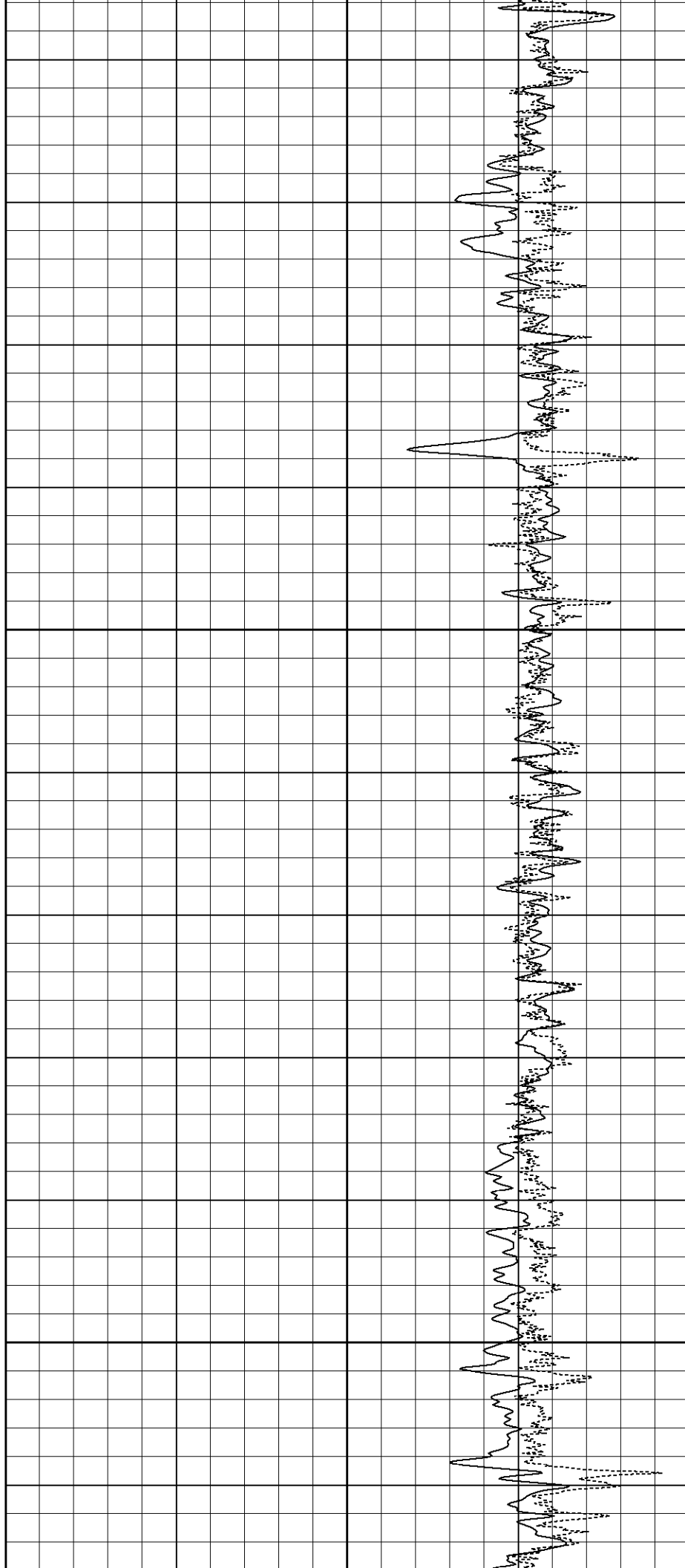
700

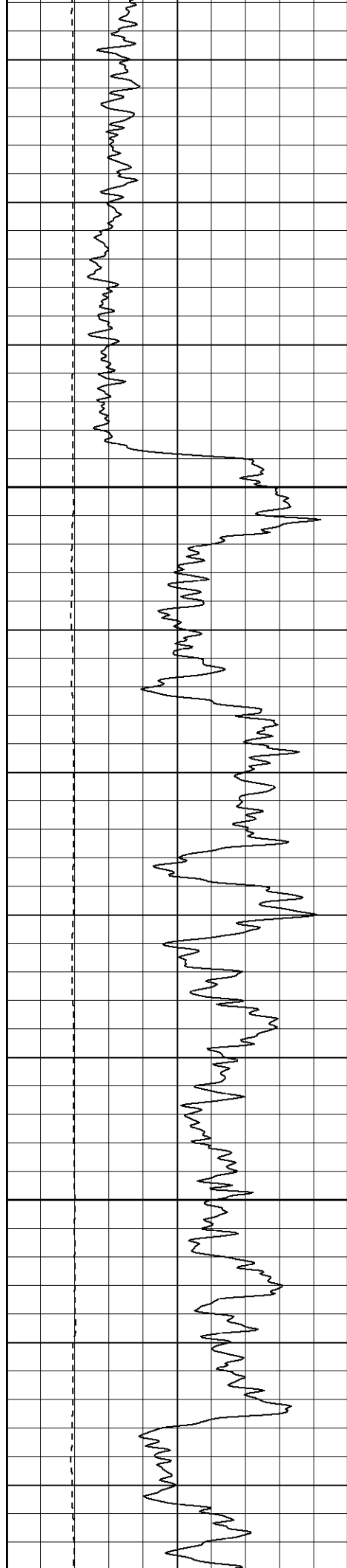




750

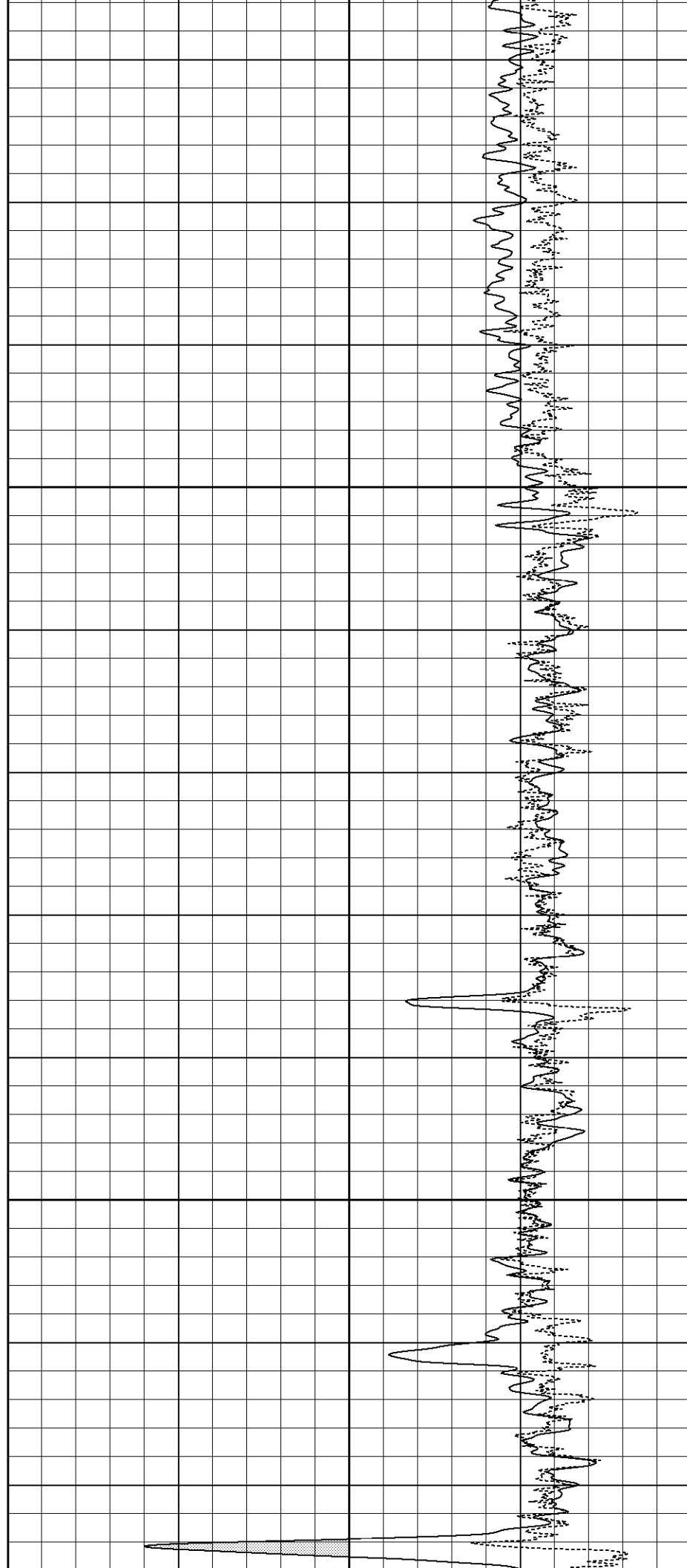
800

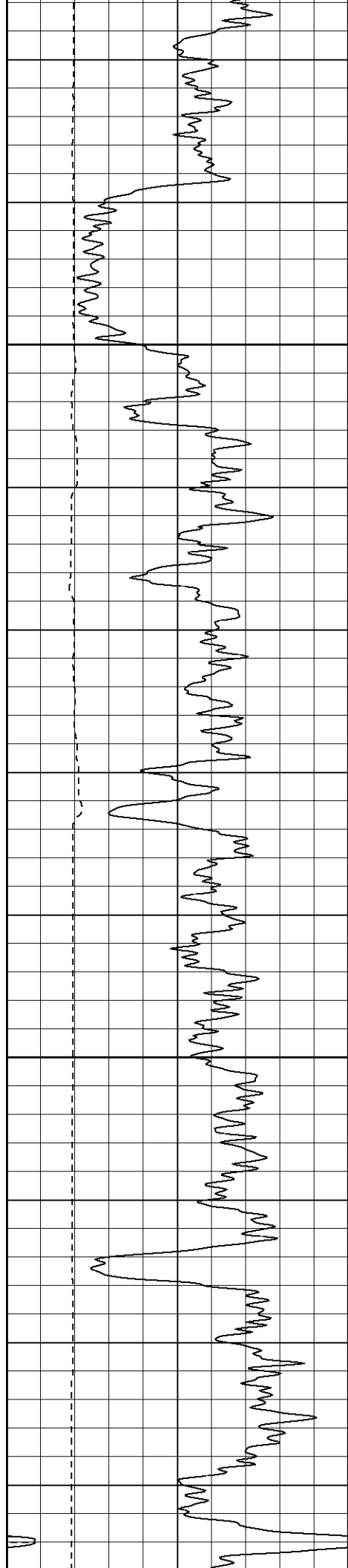




850

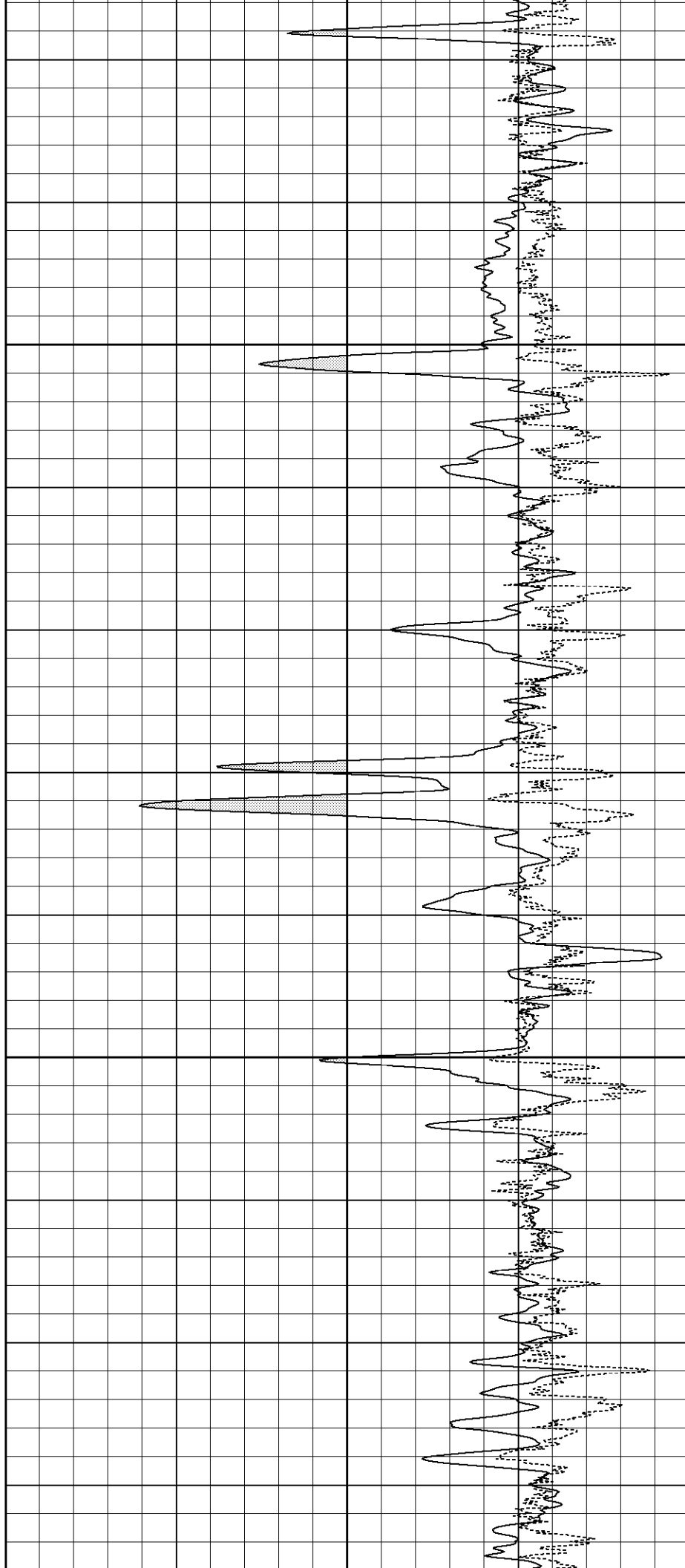
900

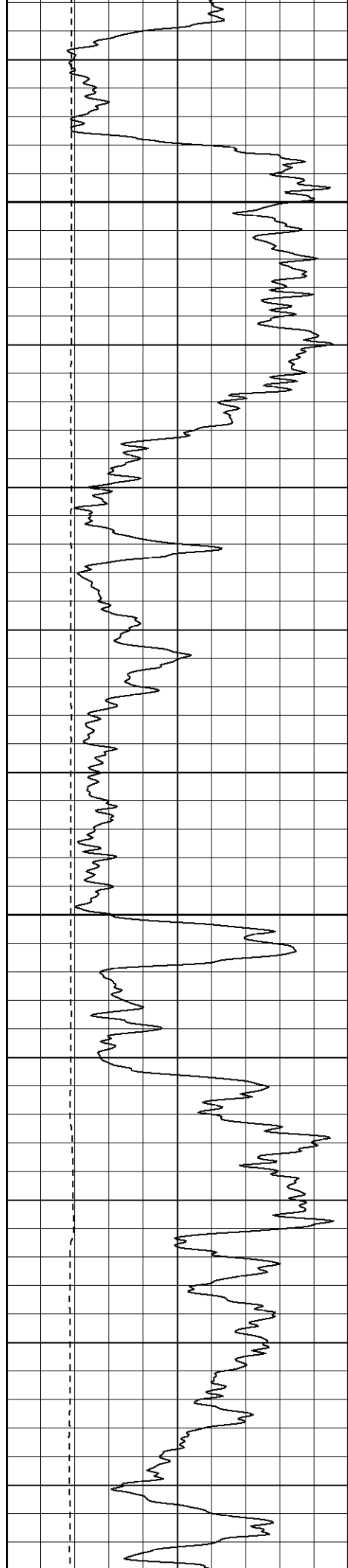




950

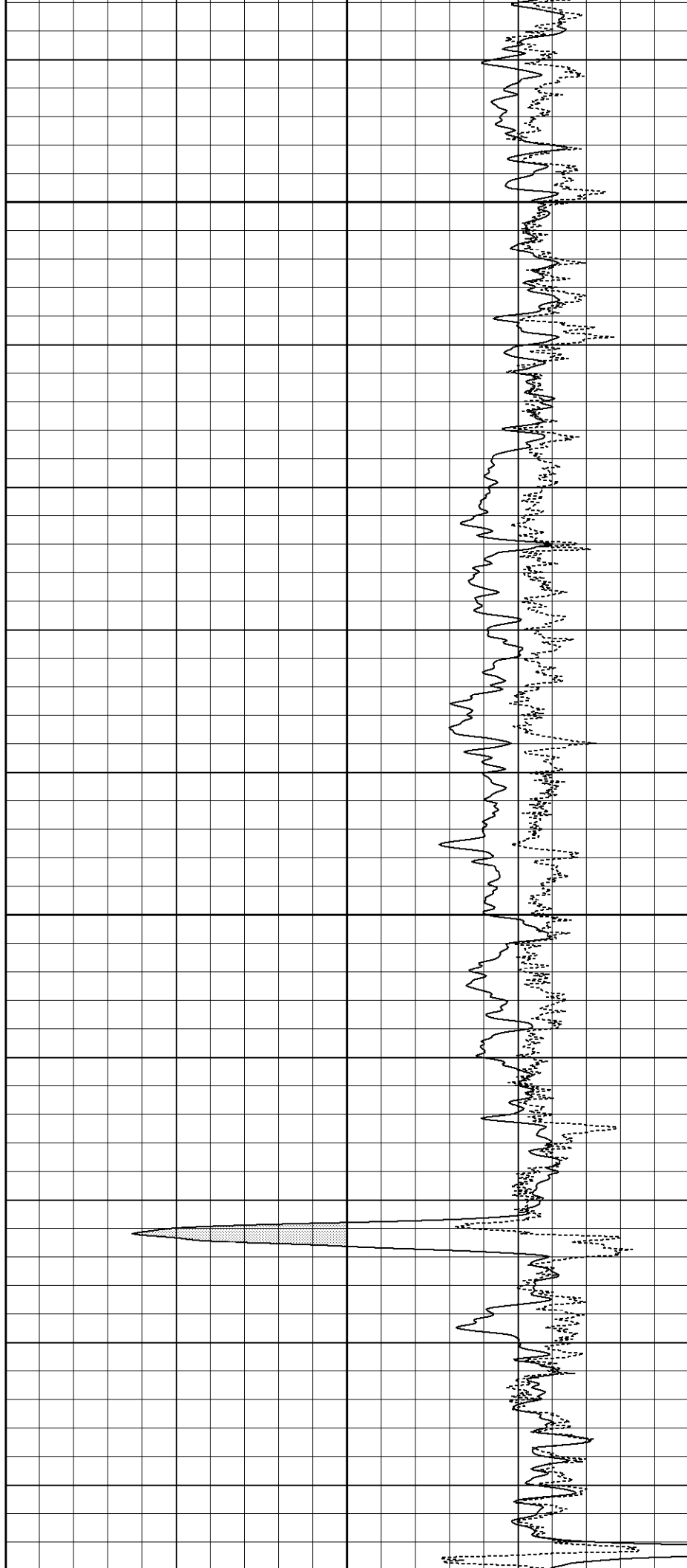
1000

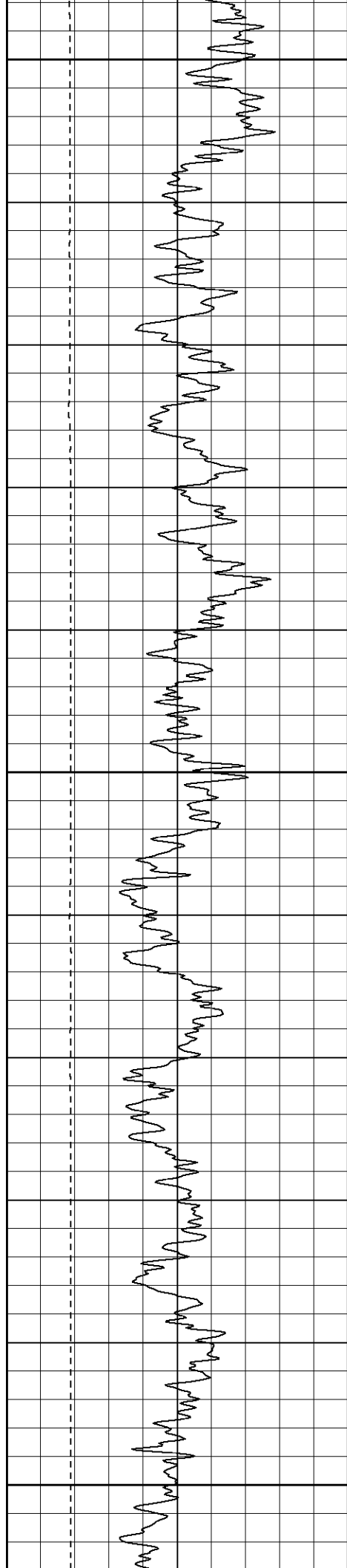




1050

1100

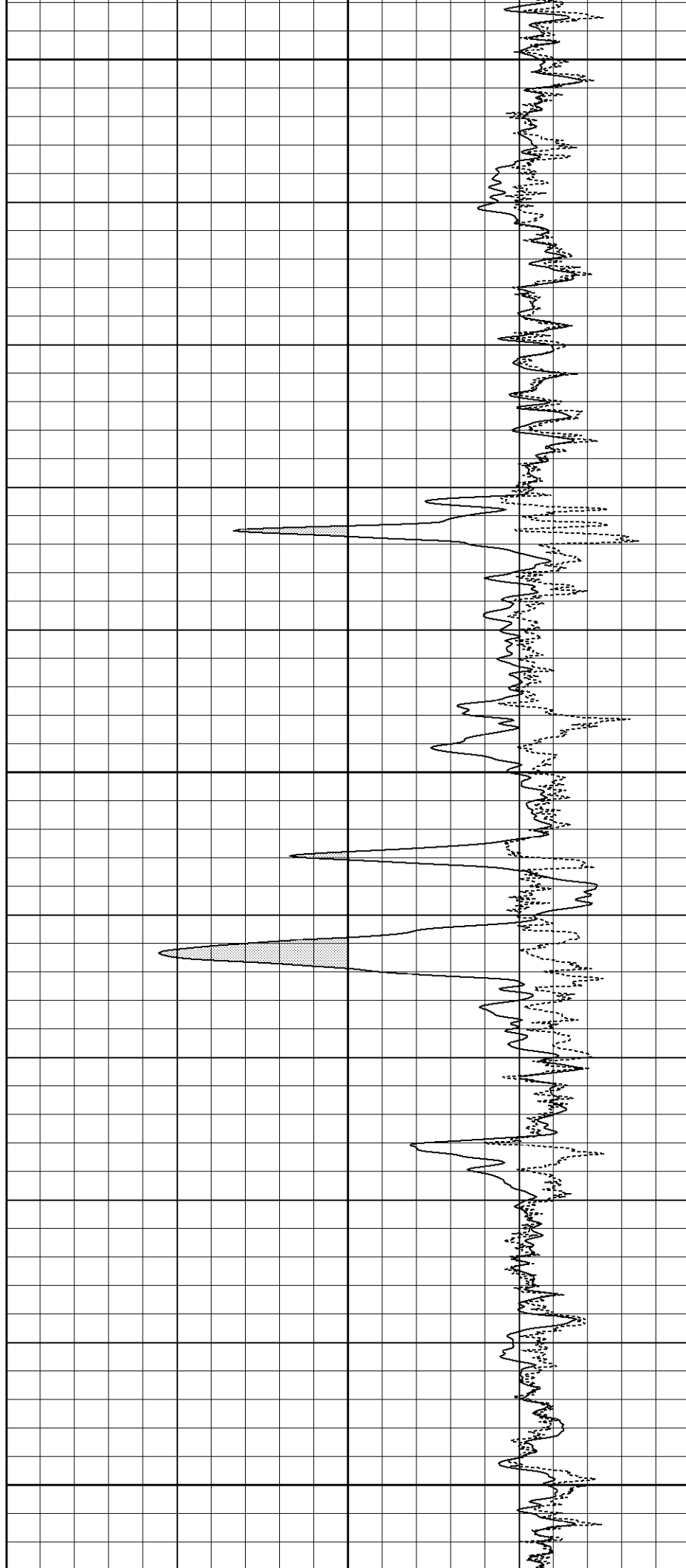


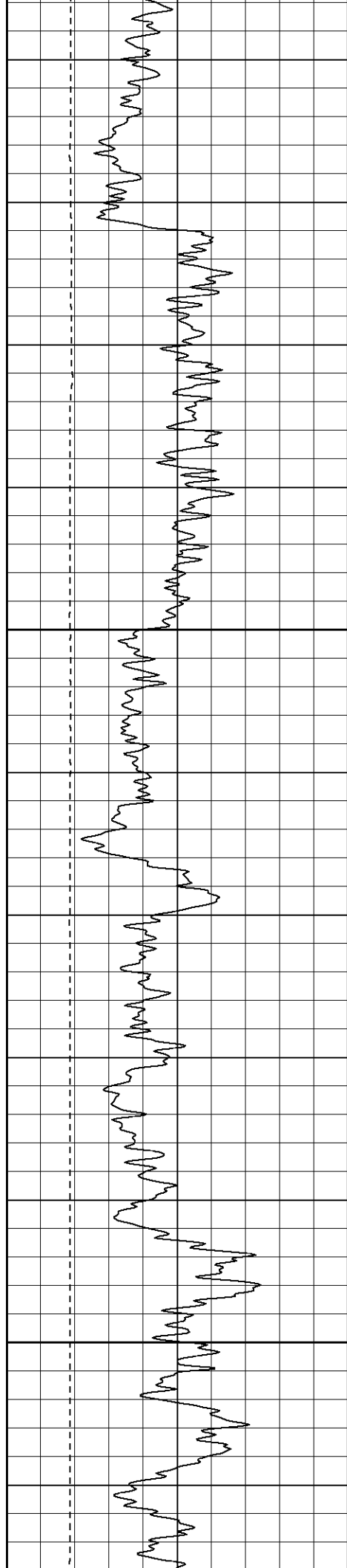


1150

1200

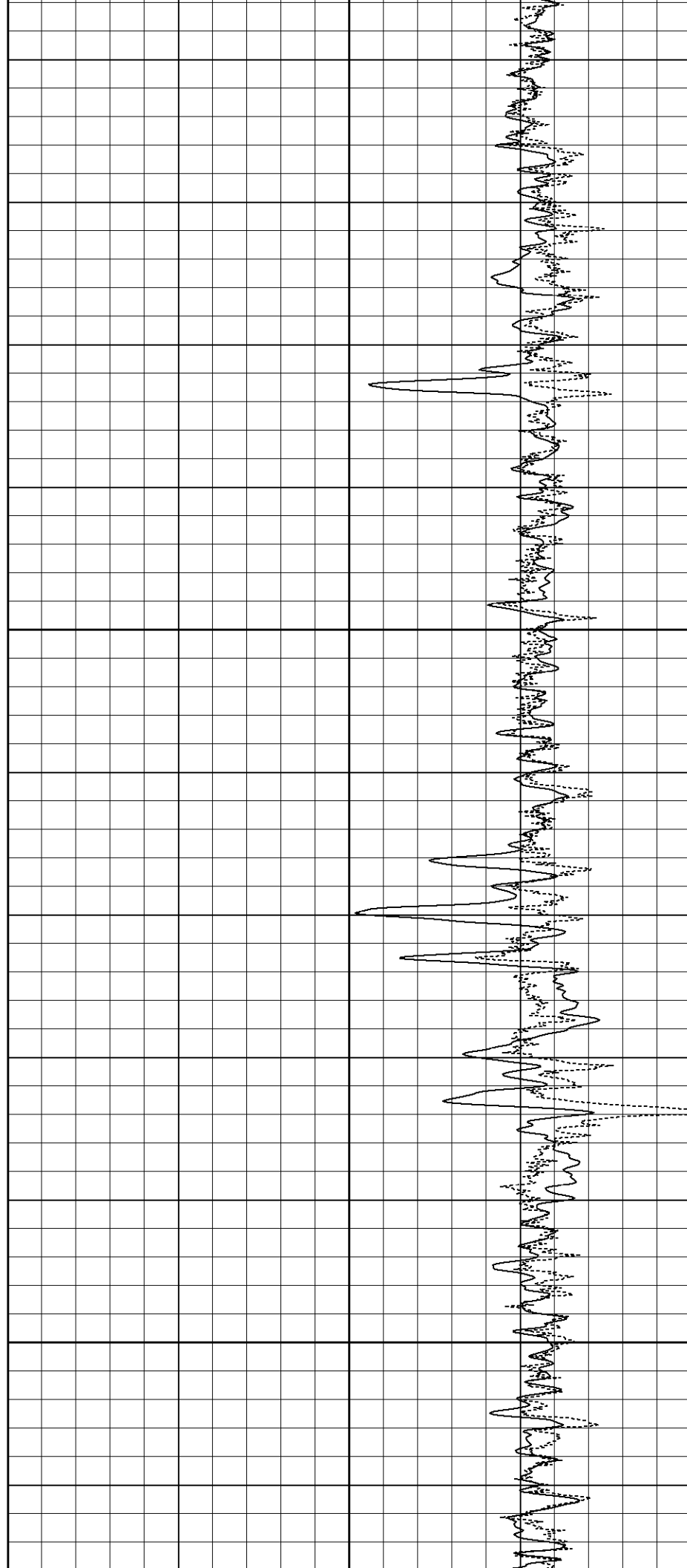
1250

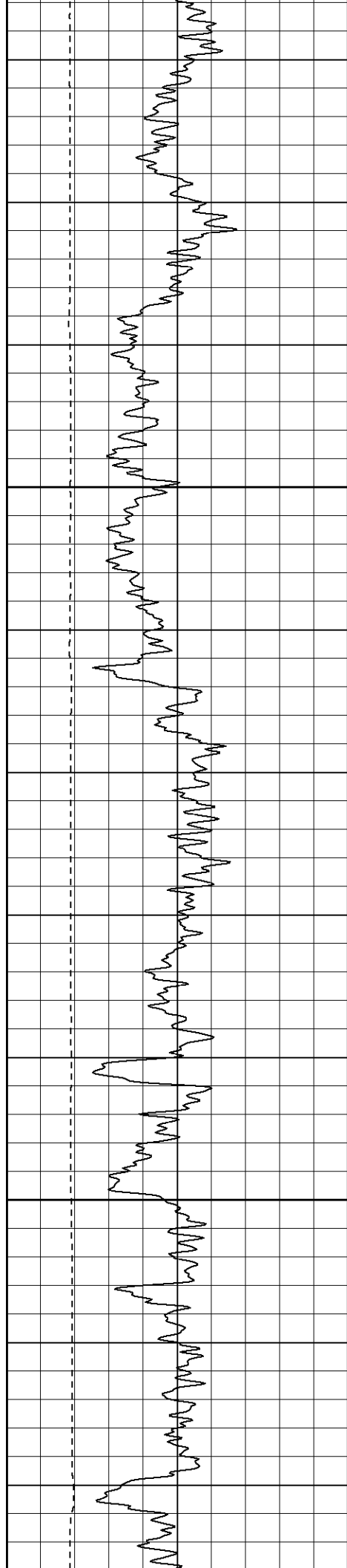




1300

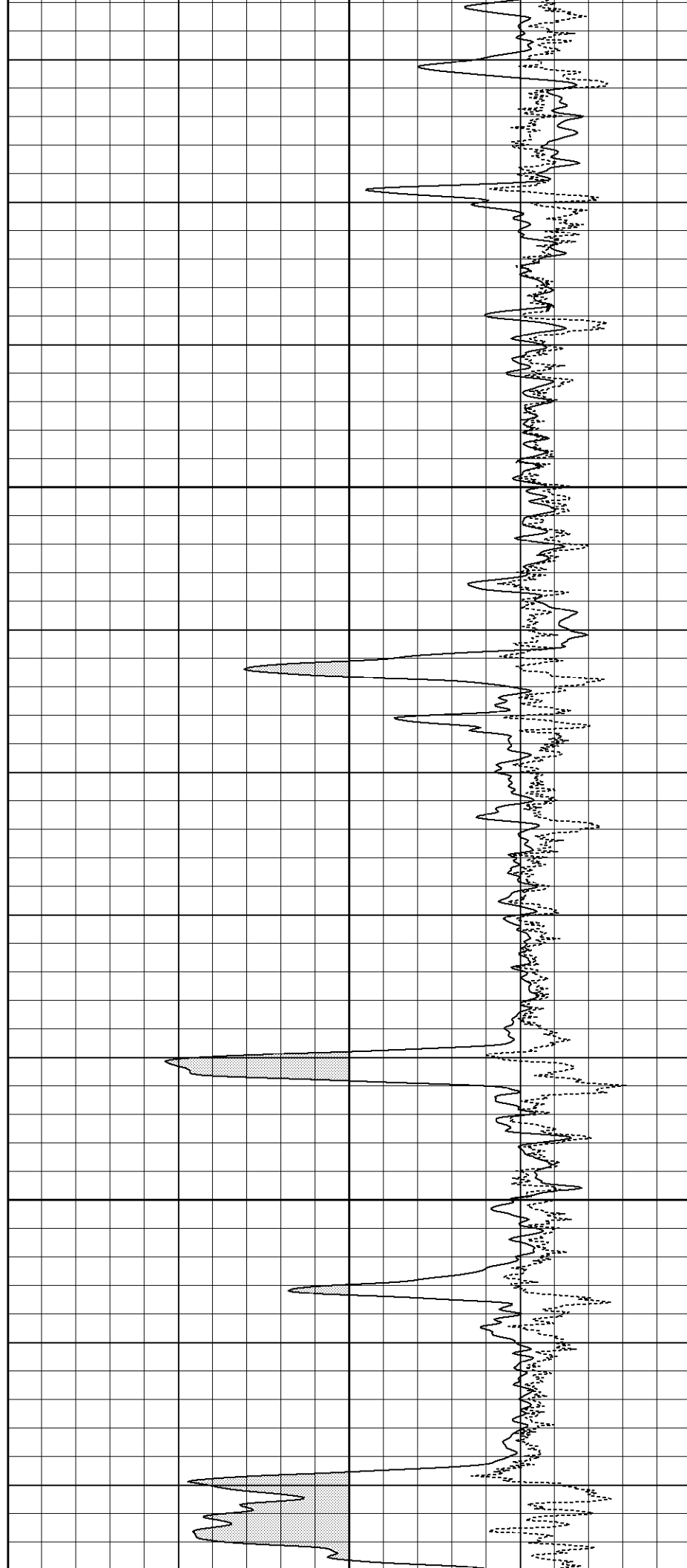
1350

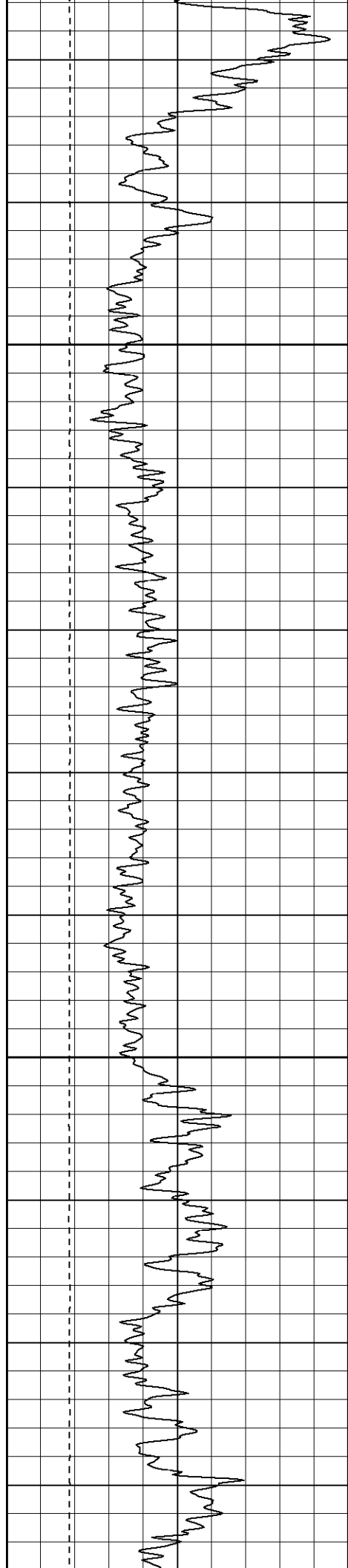




1400

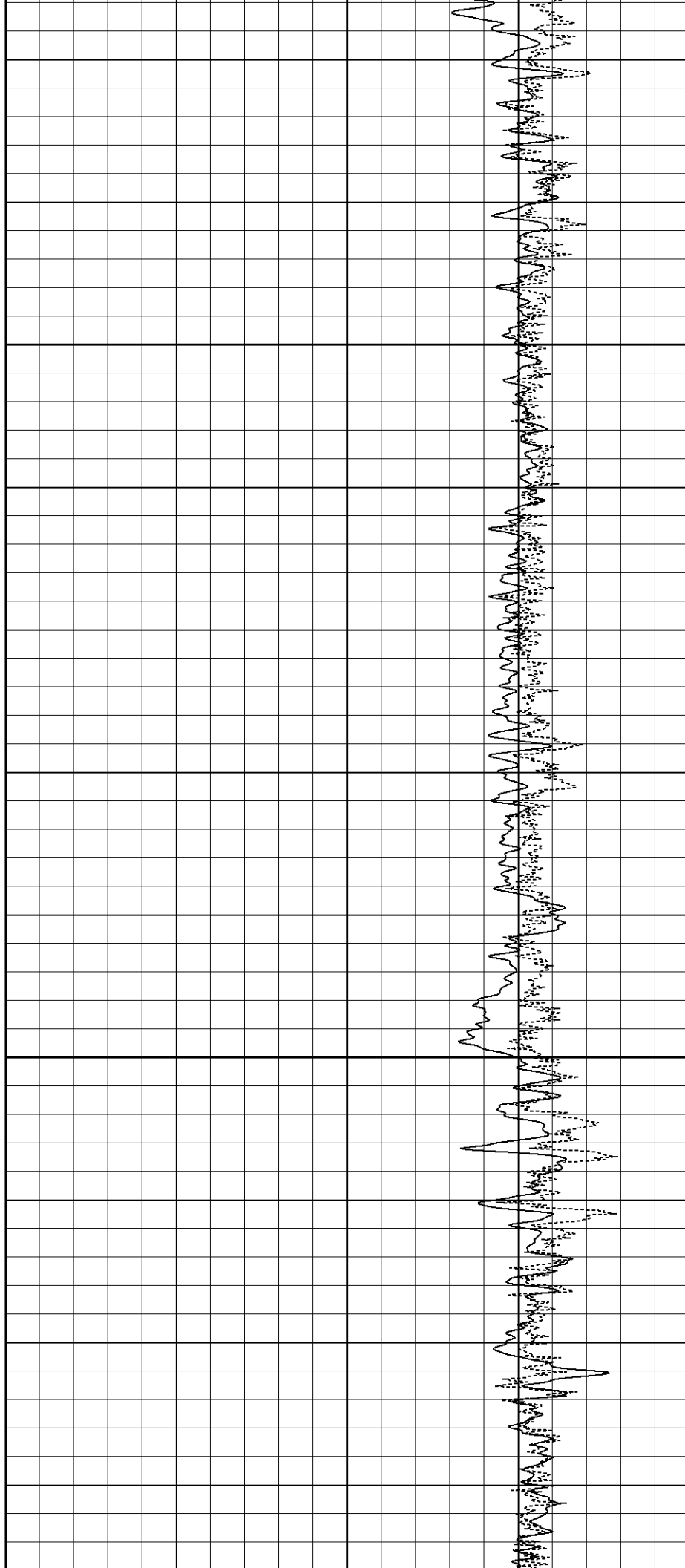
1450

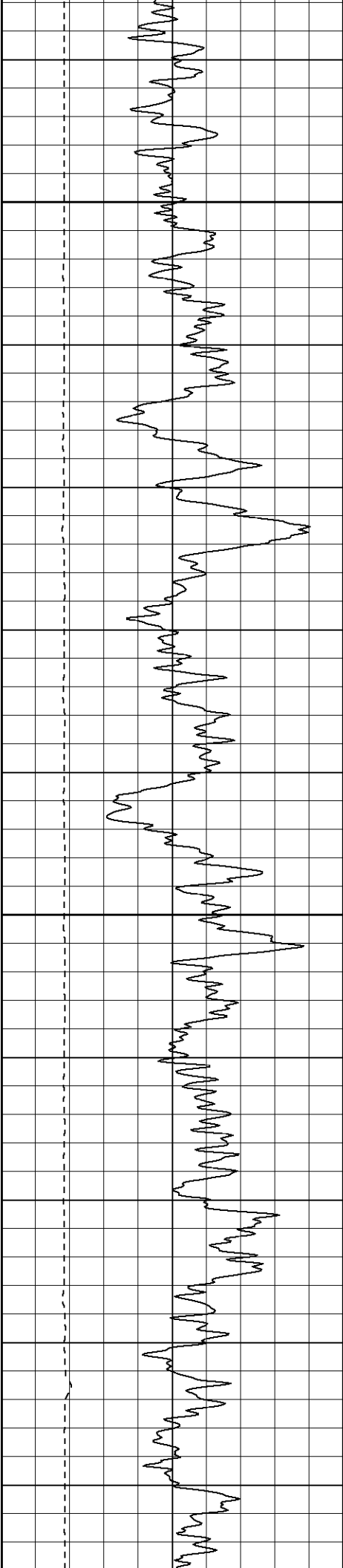




1500

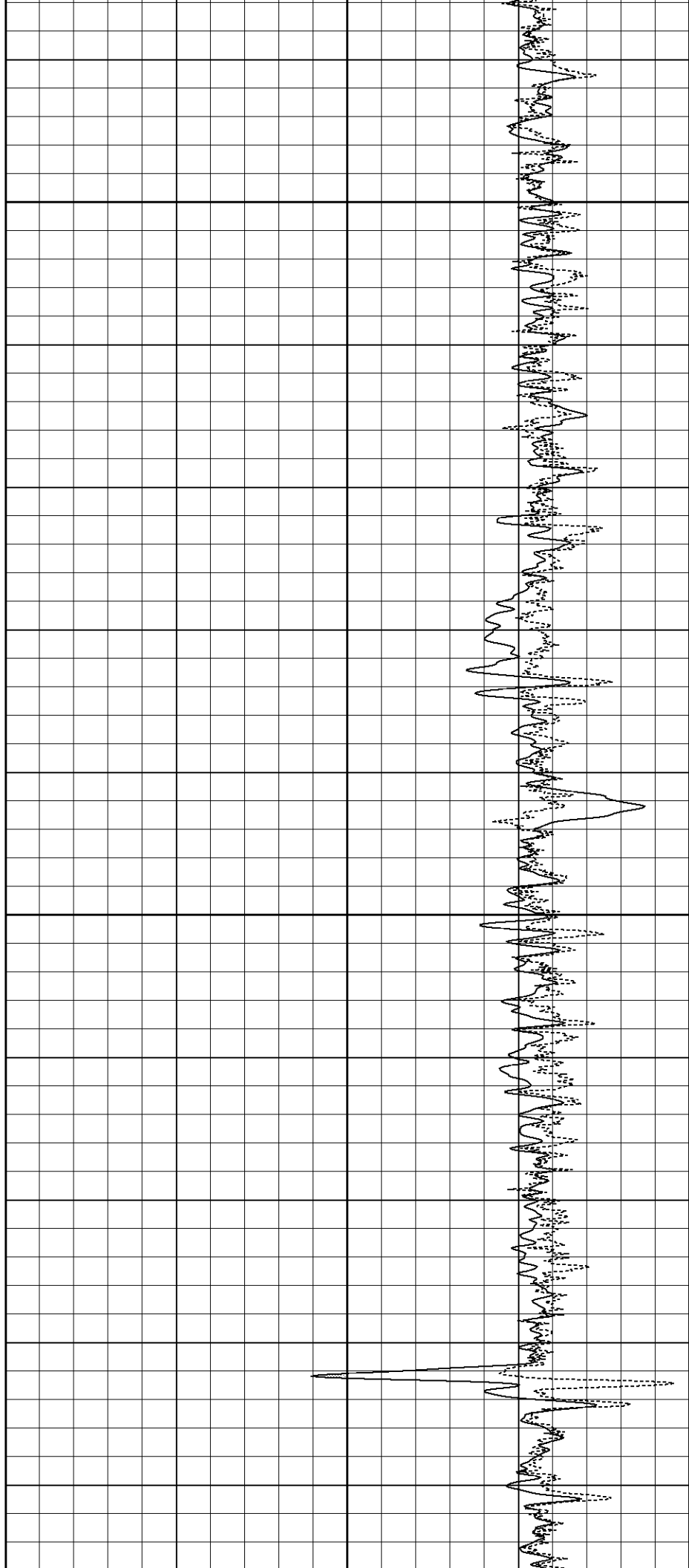
1550

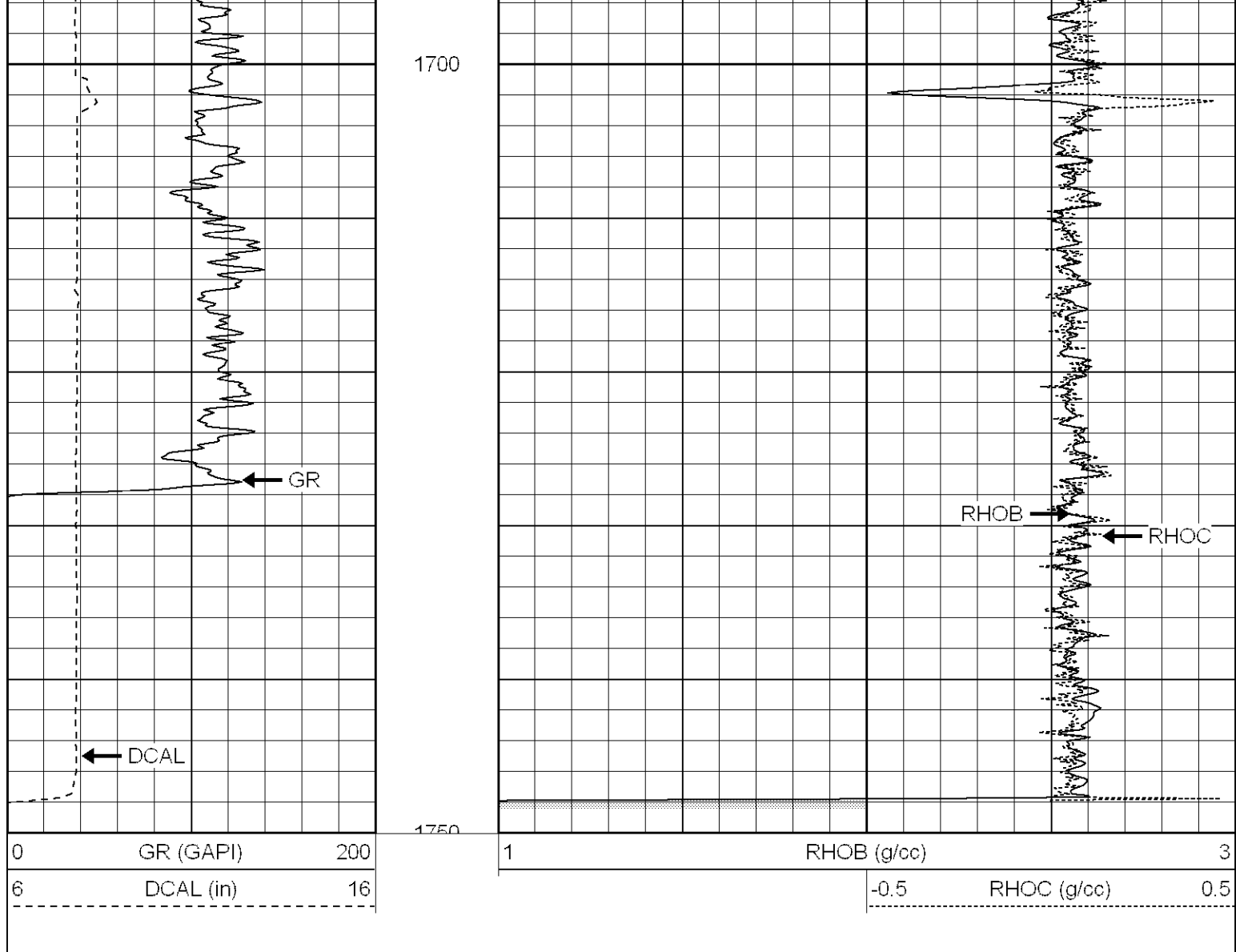




1600

1650





Calibration Report

Database File: xtoac35142.db
 Dataset Pathname: pass4
 Dataset Creation: Sun Apr 29 16:12:34 2007 by Log Open-Cased 061129

Compensated Density Calibration Report

Serial-Model: 2119-O
 Source / Verifier: csv-j12 / blks
 Master Calibration Performed: Wed Mar 28 17:52:23 2007

Master Calibration

	Density		Far Detector	Near Detector	
Magnesium	1.710	g/cc	988.49	602.41	cps
Aluminum	2.590	g/cc	220.69	404.88	cps

Spine Angle = 75.16

Density/Spine Ratio = 0.567

	Size		Reading	
Small Ring	7.85	in	3.75	V
Large Ring	14.00	in	8.81	V

Gamma Ray Calibration Report

Sensor	Offset (ft)	Schematic	Description	Len (ft)	OD (in)	Wt (lb)
NEU	12.44		None	0.75	1.50	5.00
			NEU-G (5145) Gearhart Epithermal	5.75	3.50	85.00
GR	7.64		GR-O (2119) Oilex	2.60	3.63	74.00
LSD	2.13		CDL-O (2119) Oilex	5.77	4.00	201.00
DCAL	1.79					
SSD	1.58					
Dataset: xtoac35142.db: field/well/run1/pass4 Total Length: 14.87 ft Total Weight: 365.00 lb O.D. 4.00 in						