



**SUPERIOR**  
WELL SERVICES  
Black Lick, Pa.  
Mercer, Pa.  
Wooster, Oh.  
Cleveland, Ok.  
Trinidad, Co.

**CEMENT BOND  
GAMMA RAY  
1000 PSI**

Company XTO Energy Inc.  
Well Golden Eagle 32-08  
Field Purgatorie River  
County Las Animas  
State CO

Company XTO Enegy Inc.  
Well Golden Eagle 32-08  
Field Purgatorie River  
County Las Animas  
State CO

Location: API # : 05 071 09107 00  
2857' FNL & 758' FEL

SEC 32 TWP 33S RGE 67W

Permanent Datum Ground Level Elevation 7743'  
Log Measured From Ground Level  
Drilling Measured From Ground Level

Other Services  
PRES  
CONTROL  
Elevation  
K.B. -----  
D.F. -----  
G.L. 7743'

Date	6/12/07				
Run Number	one				
Depth Driller	2360'				
Depth Logger	2296'				
Bottom Logged Interval	2292'				
Top Log Interval	Surt.				
Open Hole Size	7 7/8"				
Type Fluid	water				
Density / Viscosity	///				
Max. Recorded Temp.	///				
Estimated Cement Top	1174'				
Time Well Ready	8:30				
Time Logger on Bottom	8:50				
Equipment Number	0703				
Location	Trinidad				
Recorded By	Worley				
Witnessed By	Mr. Maxwell				
Run Number	Borehole Record				Tubing Record
	Bit	From	To	Size	Weight
Casing Record	Size				Top
	8 5/8"				00
Prot. String	Wgt/Ft				Bottom
	5 1/2"				00
Production String					NA
Liner					

<<< Fold Here >>>

All interpretations are opinions based on inferences from electrical or other measurements and we cannot and do not guarantee the accuracy or correctness of any interpretation, and we shall not, except in the case of gross or willful negligence on our part, be liable or responsible for any loss, costs, damages, or expenses incurred or sustained by anyone resulting from any interpretation made by any of our officers, agents or employees. These interpretations are also subject to our general terms and conditions set out in our current Price Schedule.

Comments

First Bosque entrance just before Weston, first right at Cherry Canyon, stay left at Y, stay on main road approx. four miles, first drive thru location on right.

CBL ran under 1000 PSI.



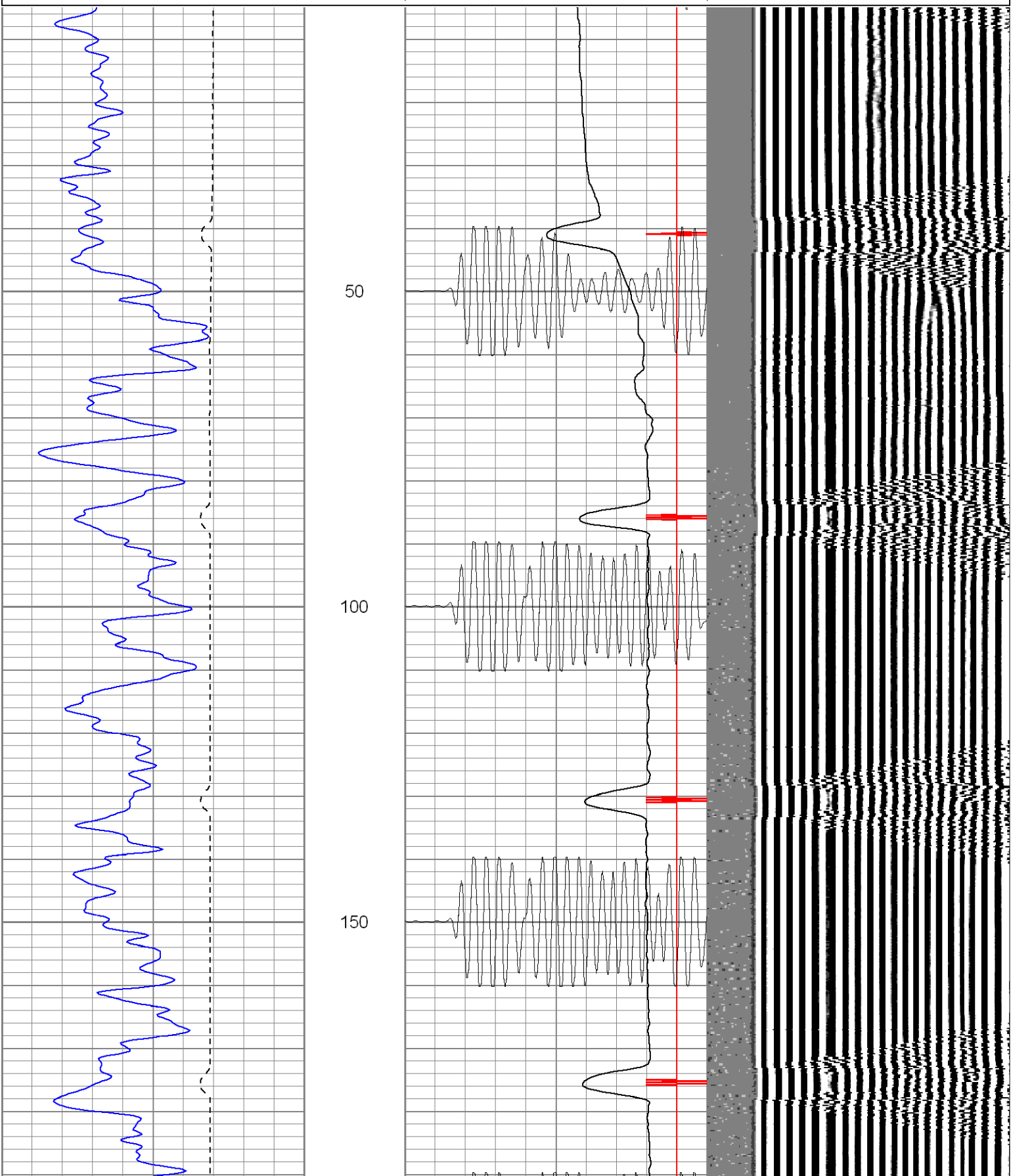
**SUPERIOR**

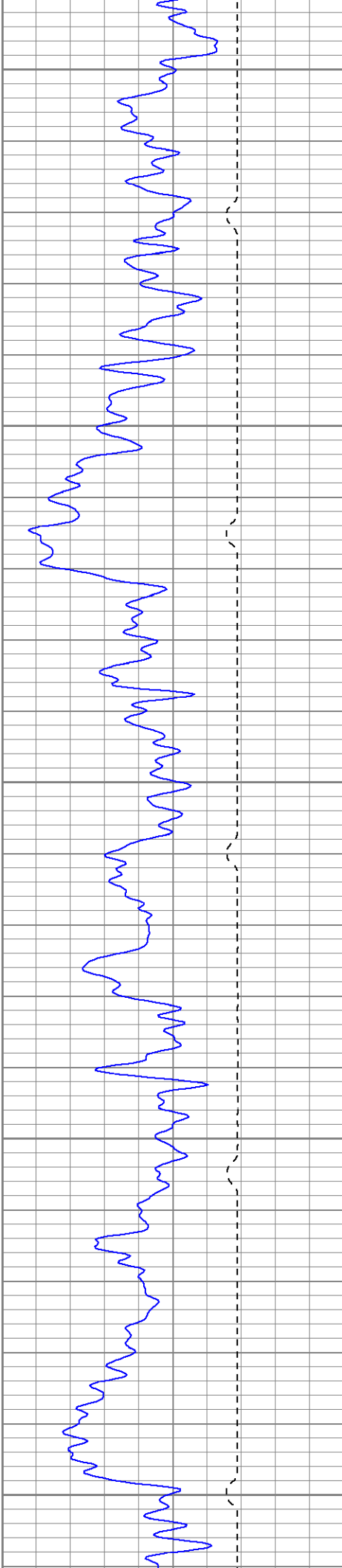
Black Lick, Pa.  
Mercer, Pa.  
Wooster, Oh.  
Cleveland, Ok.  
Trinidad, Co.

**Main Pass 1000 PSI**

Database File: ge32-08b61207.db  
Dataset Pathname: pass2.3  
Presentation Format: cblrt  
Dataset Creation: Tue Jun 12 10:44:28 2007 by Calc Std Casedhole 07051  
Charted by: Depth in Feet scaled 1:240

0	GR (GAPI)	200	0	AMP3 (mV)	100	200	Variable Density	1200
400	TT3 (usec)	200	18	CCL	-2			
			200	CBL5	1200			





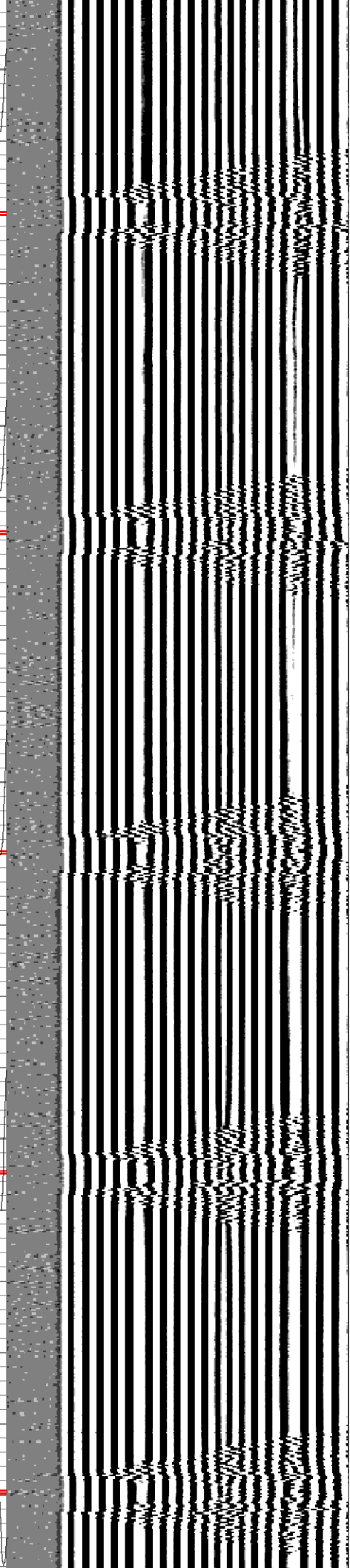
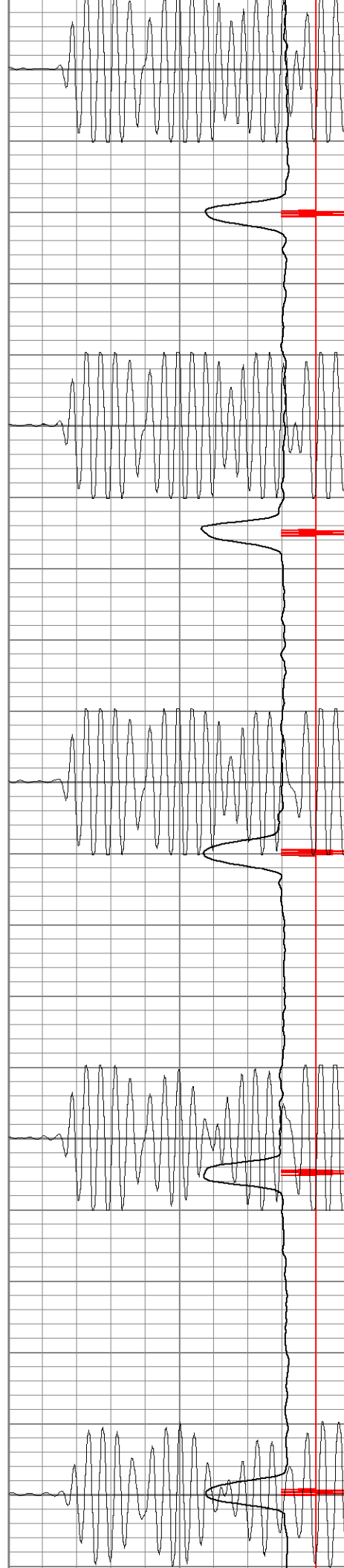
200

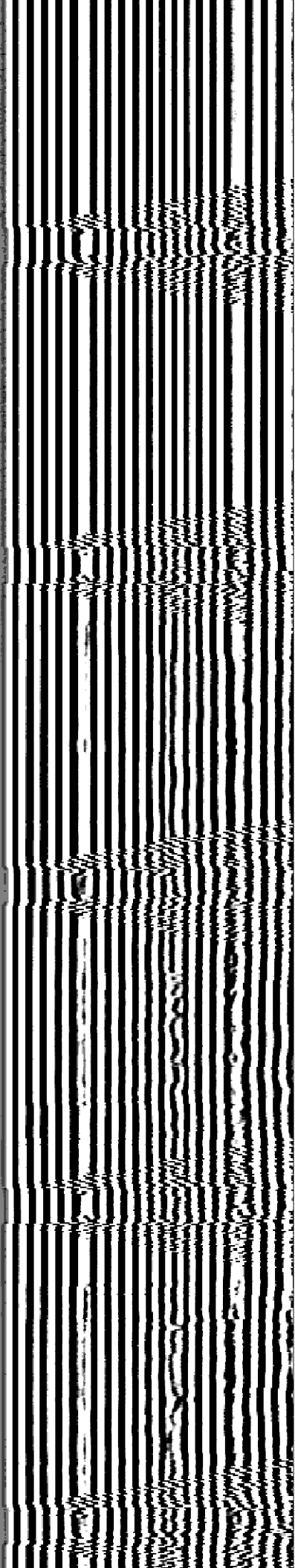
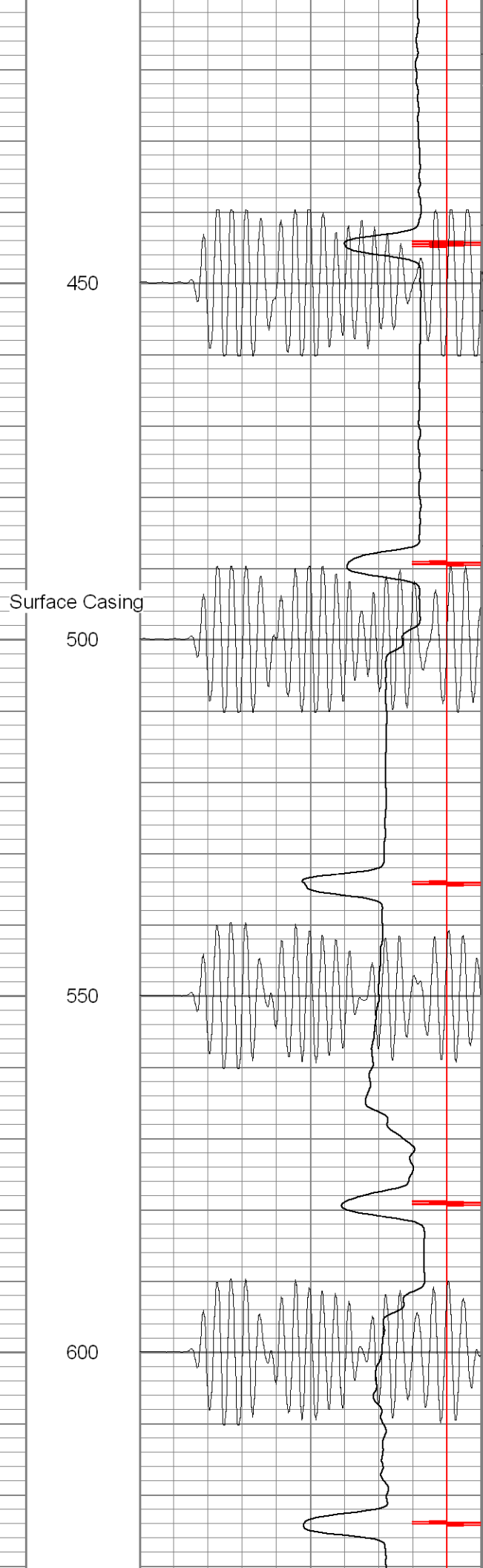
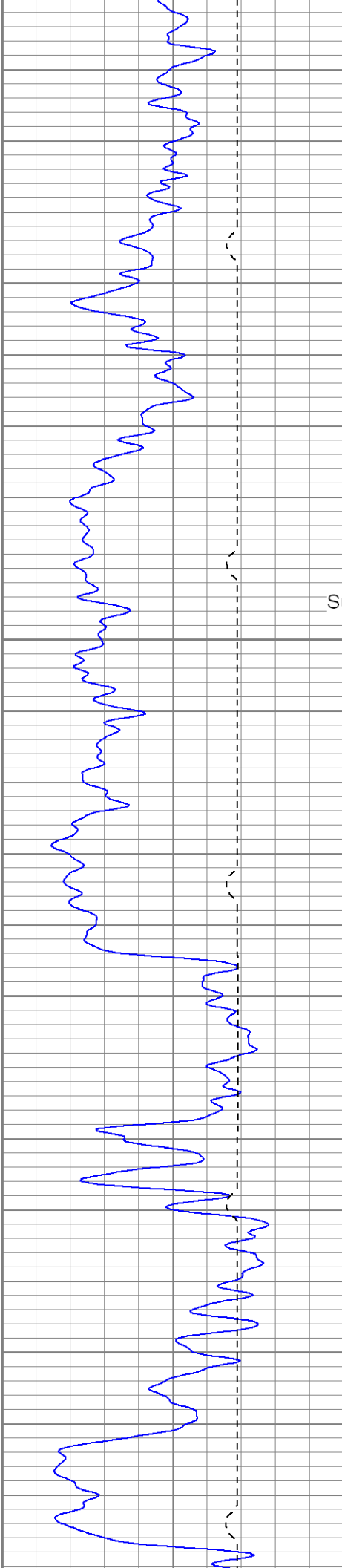
250

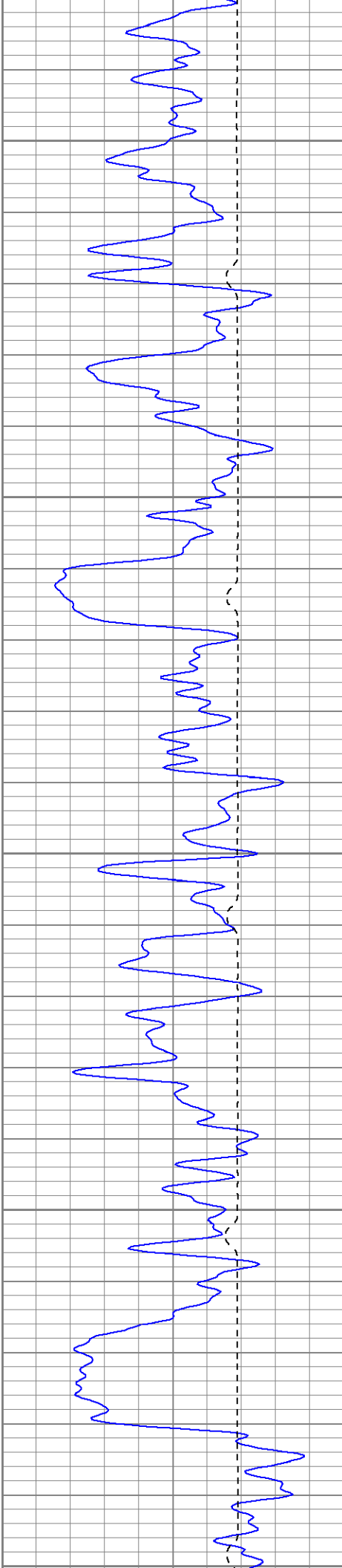
300

350

400







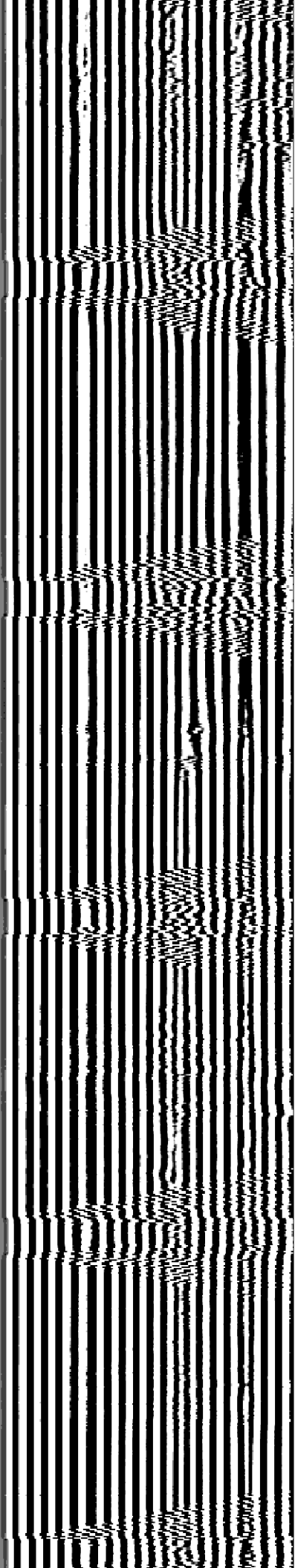
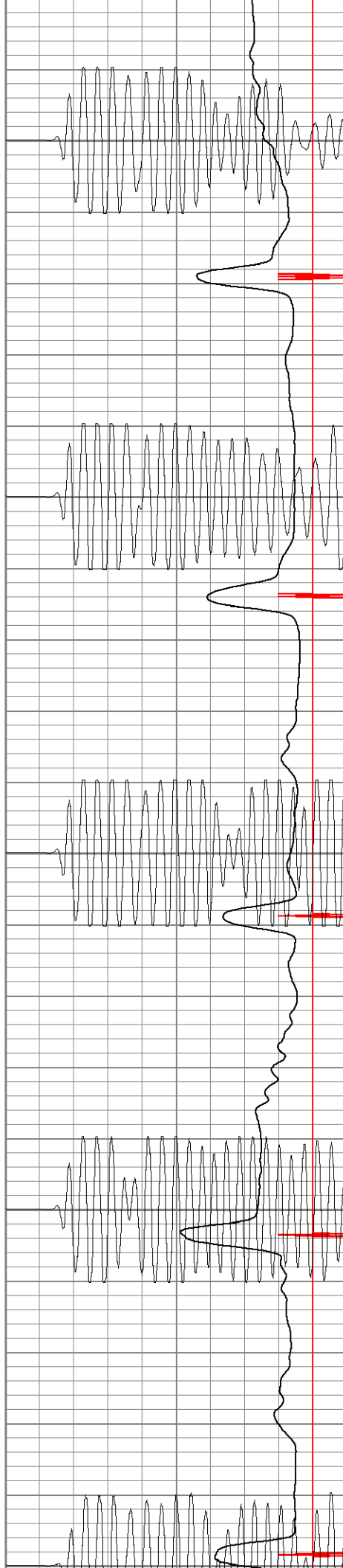
650

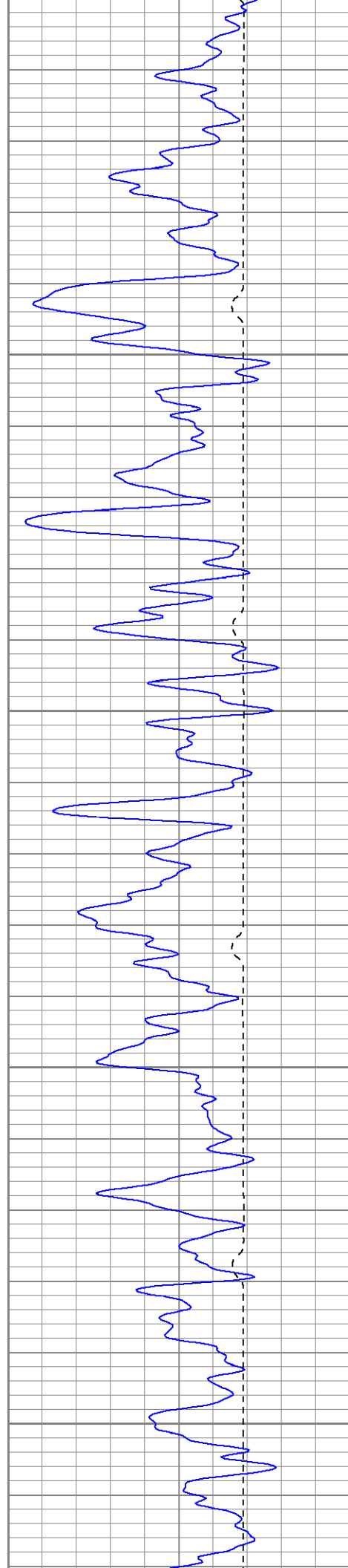
700

750

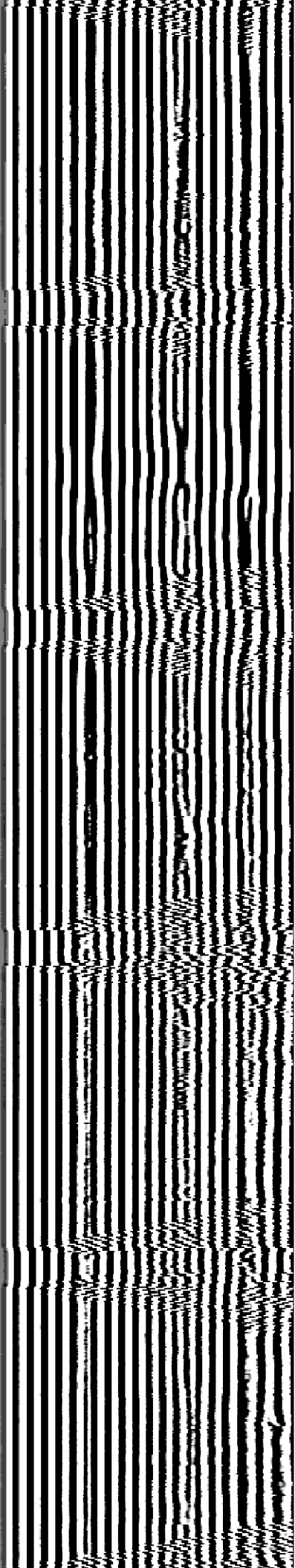
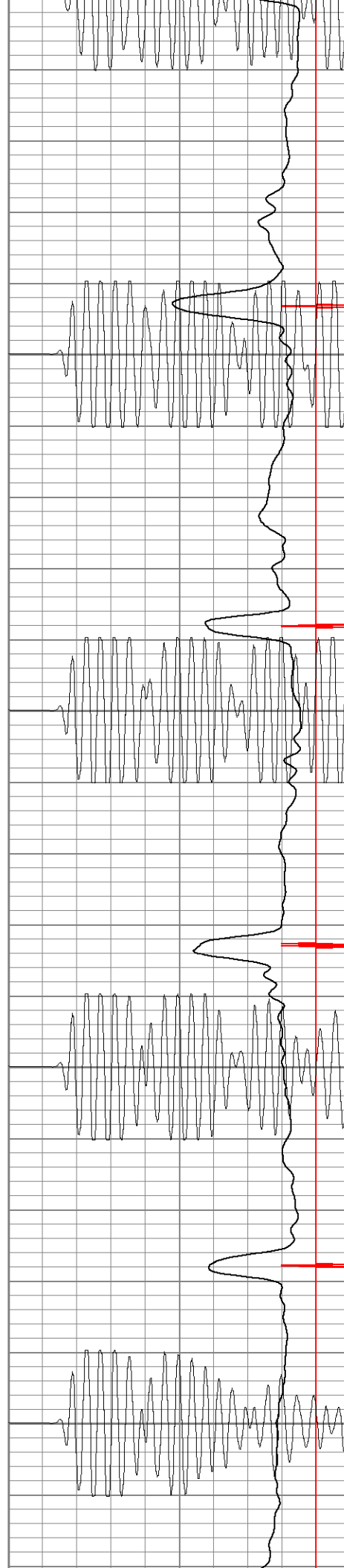
800

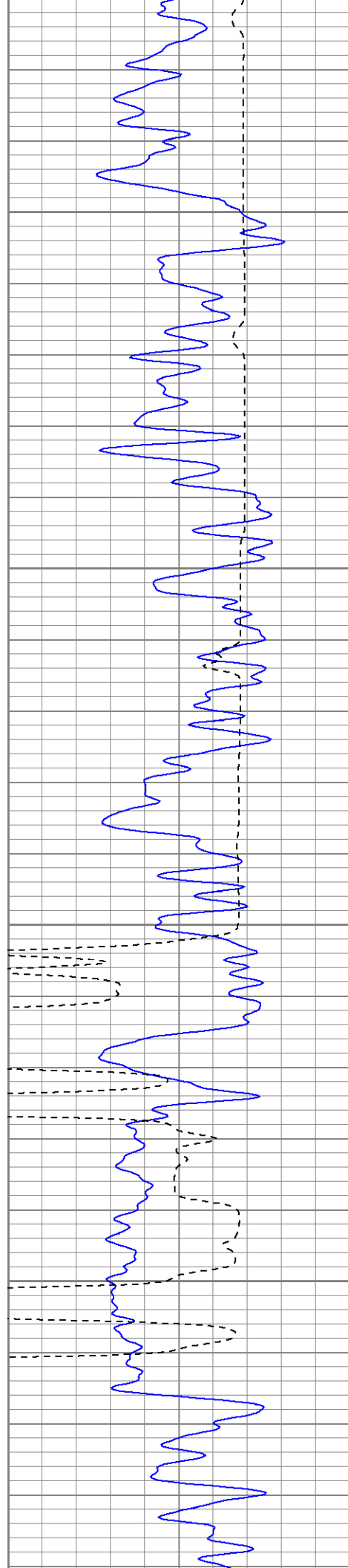
850





850  
900  
950  
1000  
1050





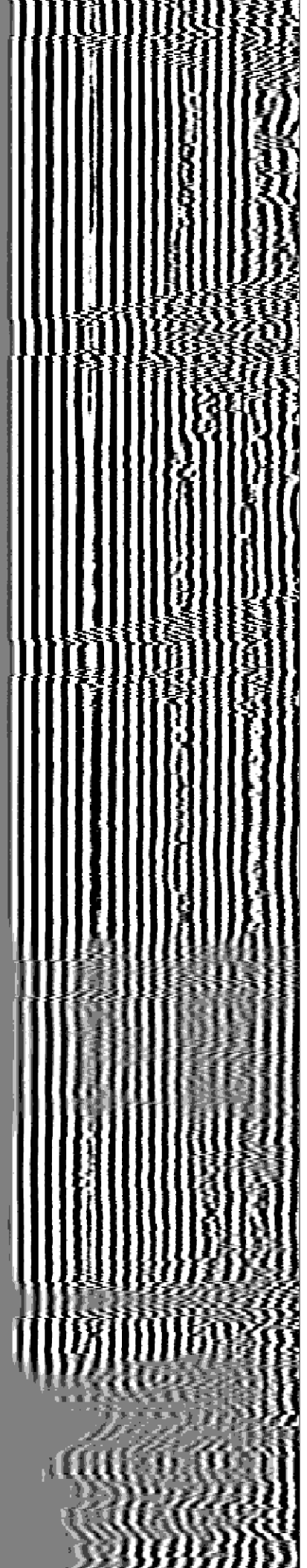
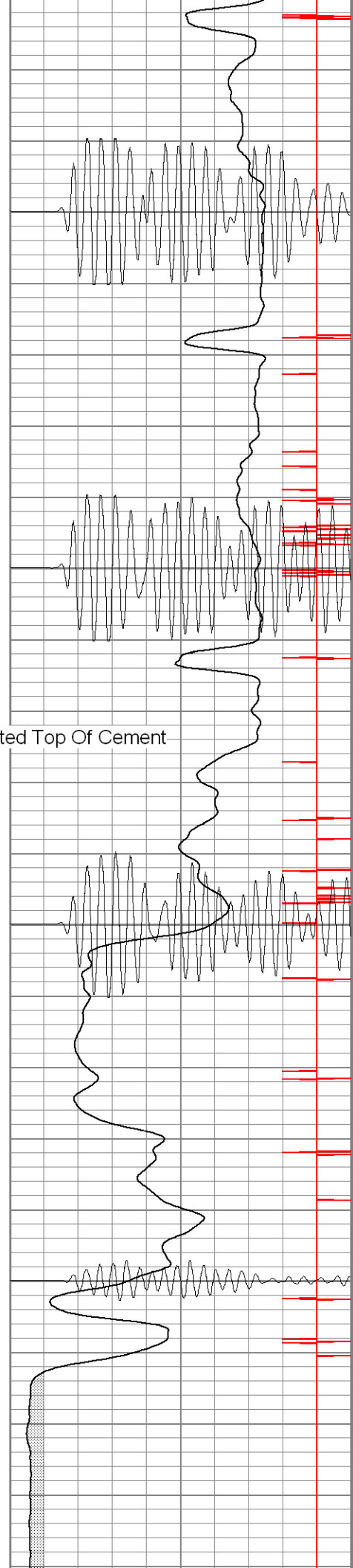
1100

1150

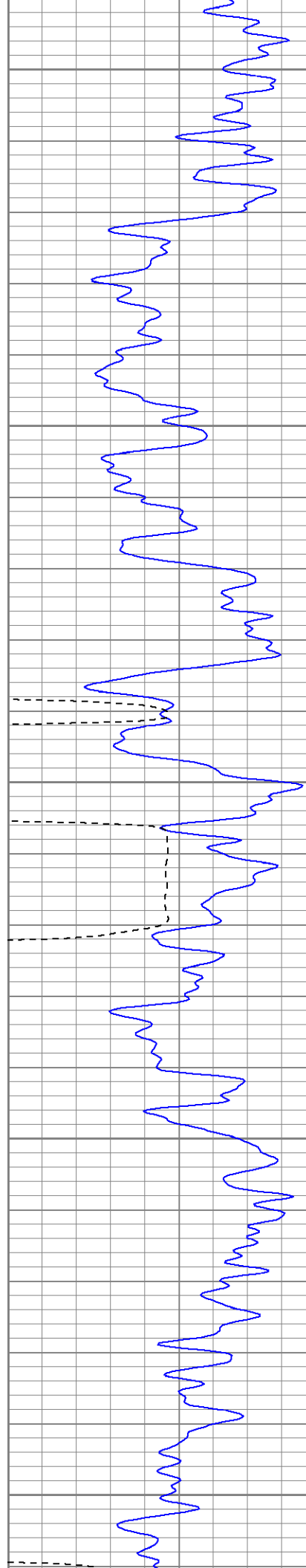
Estimated Top Of Cement

1200

1250







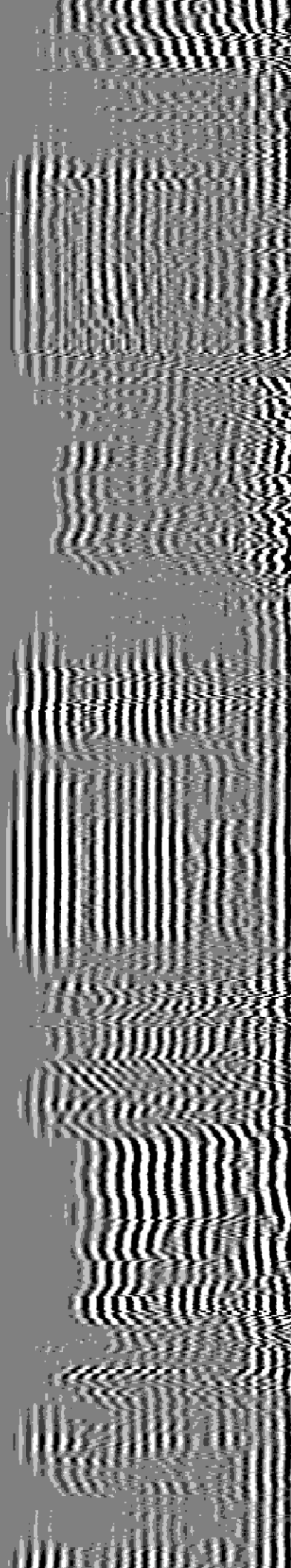
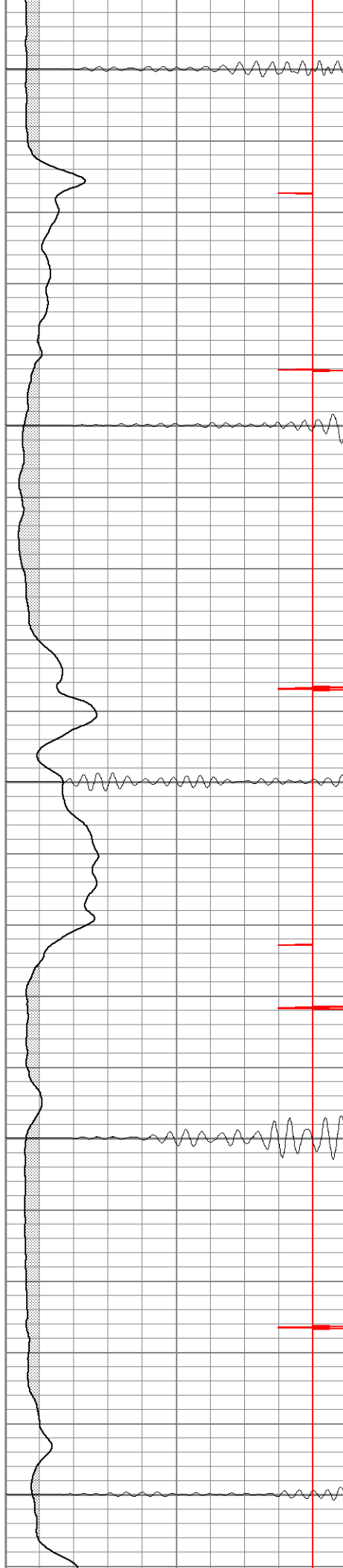
1300

1350

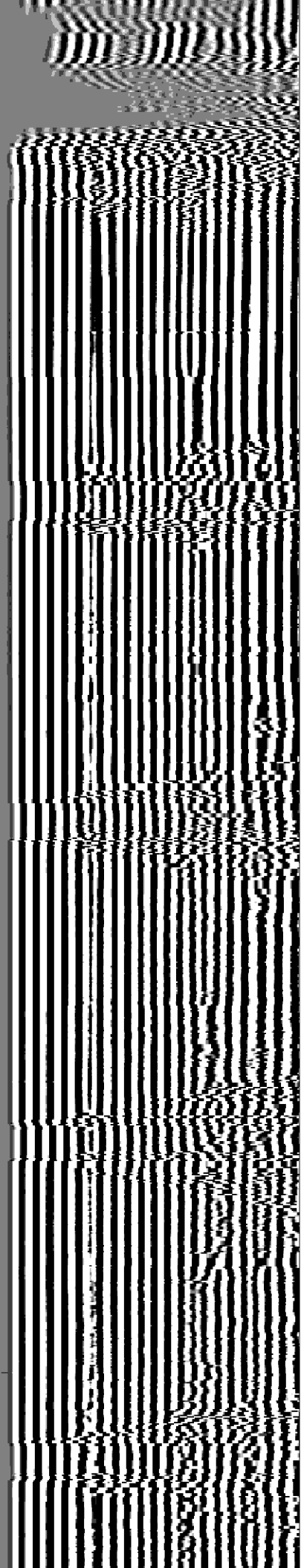
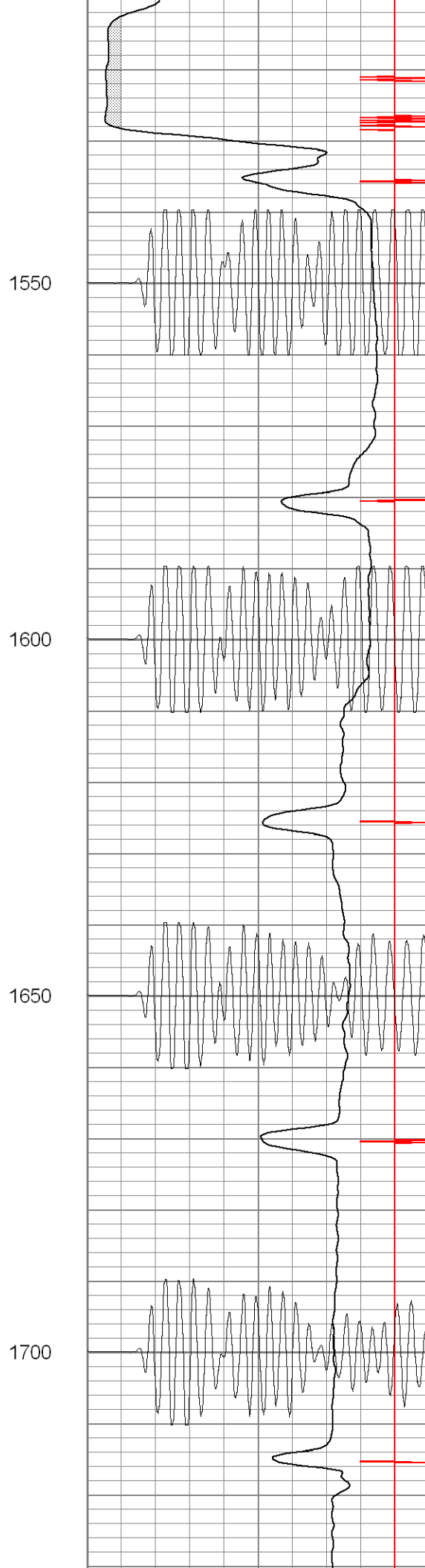
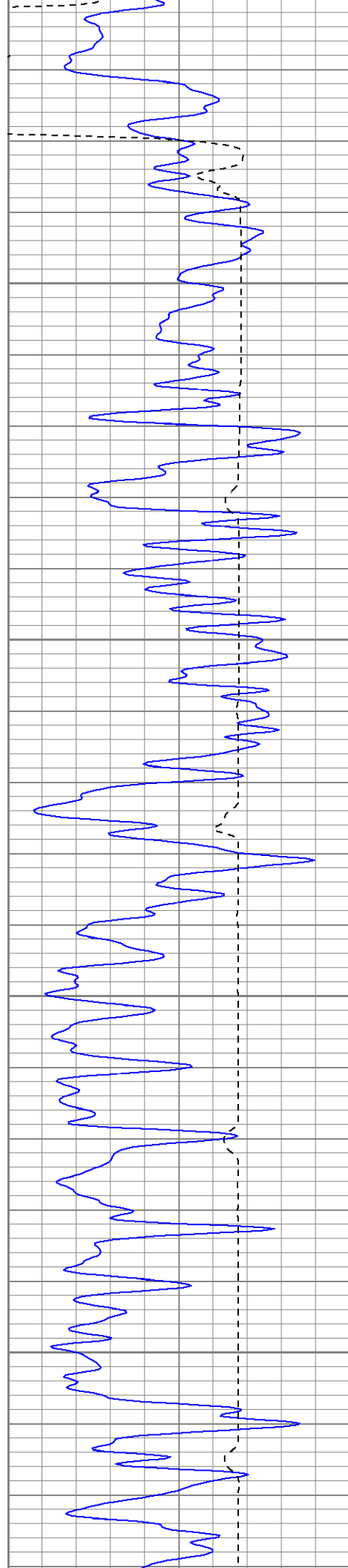
1400

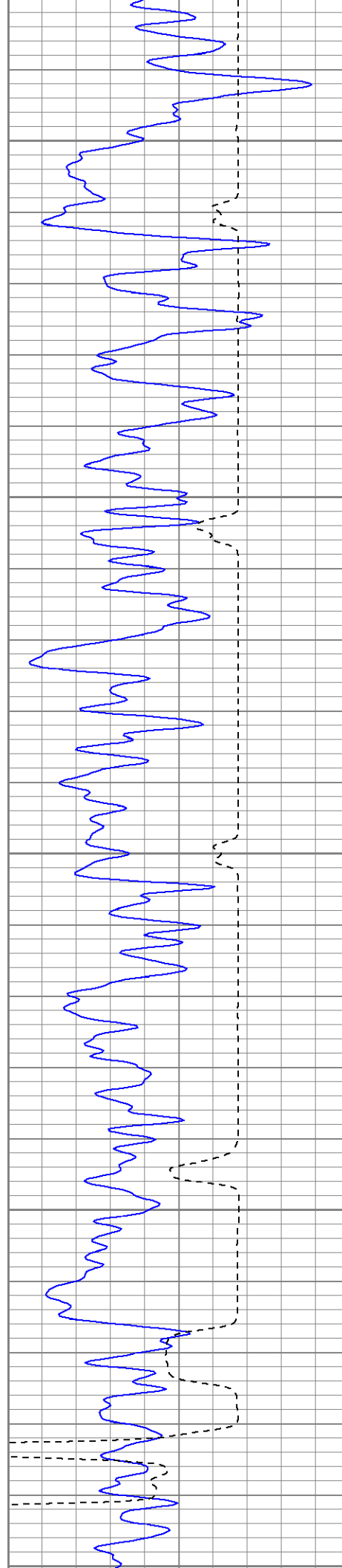
1450

1500









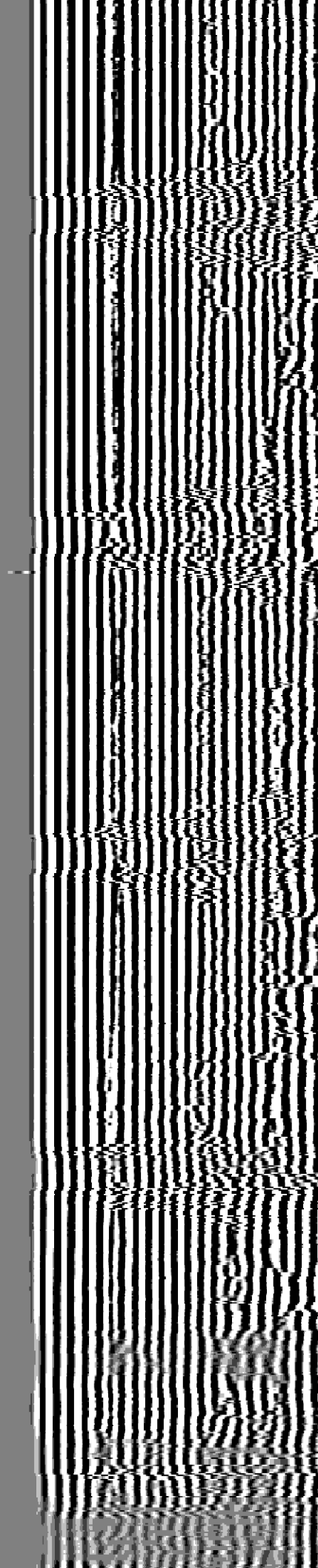
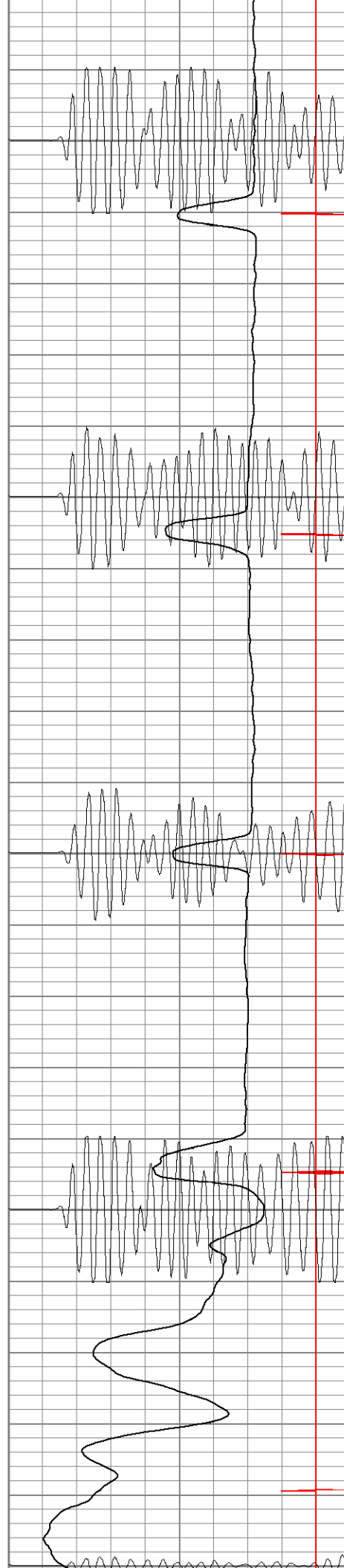
1750

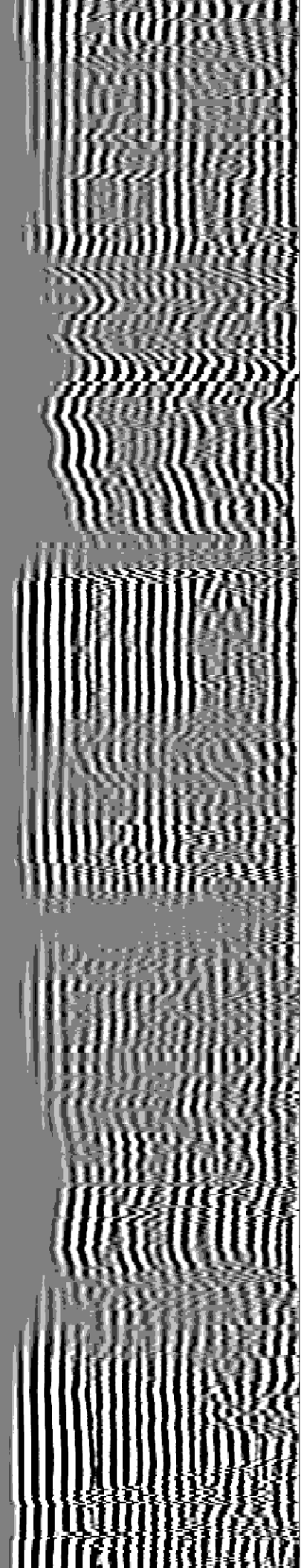
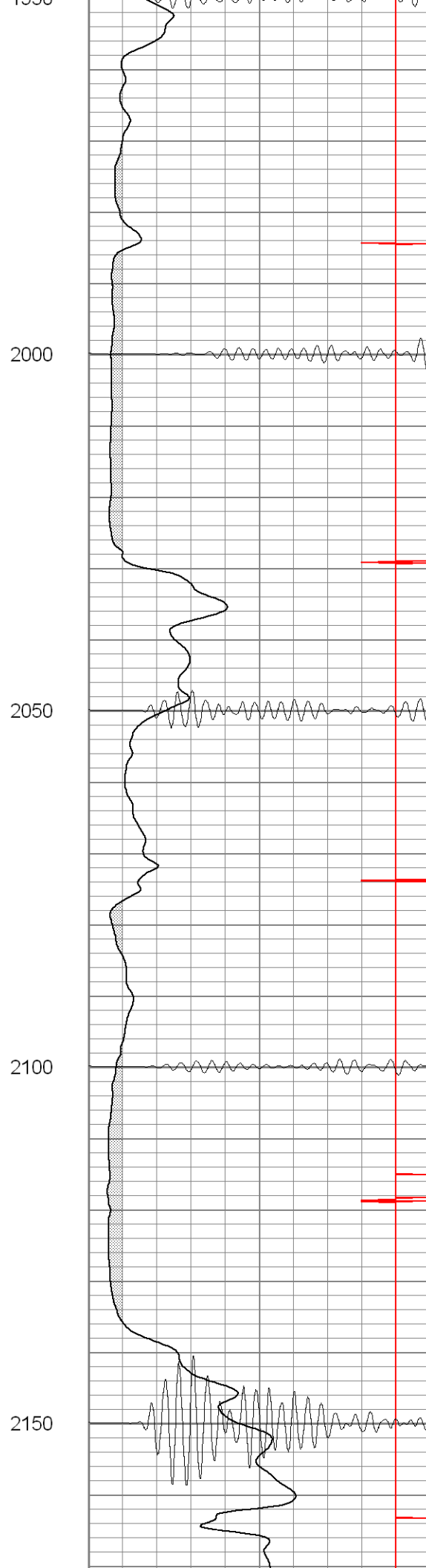
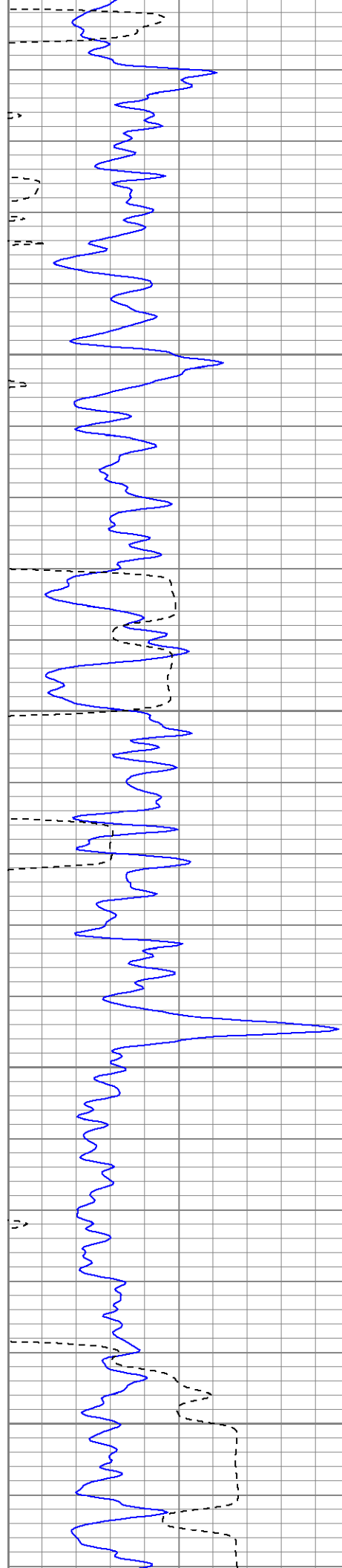
1800

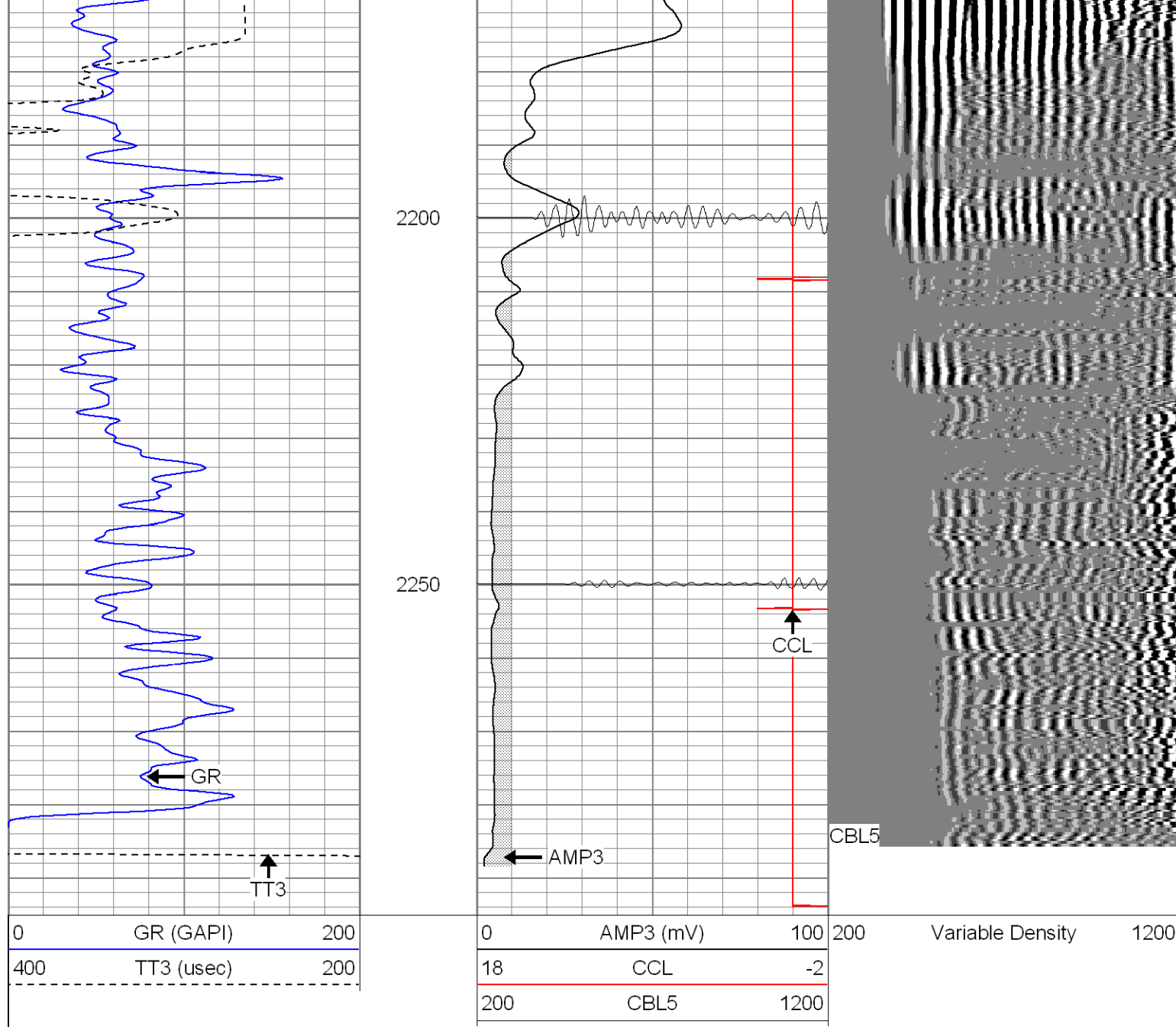
1850

1900

1950





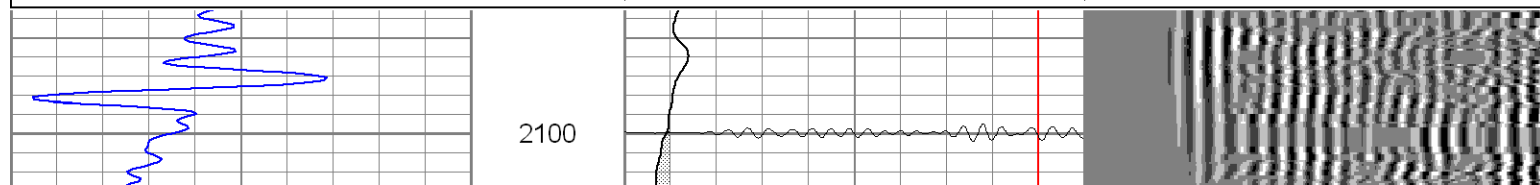
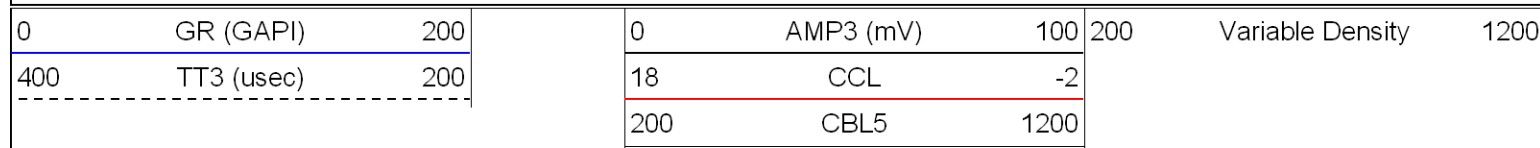


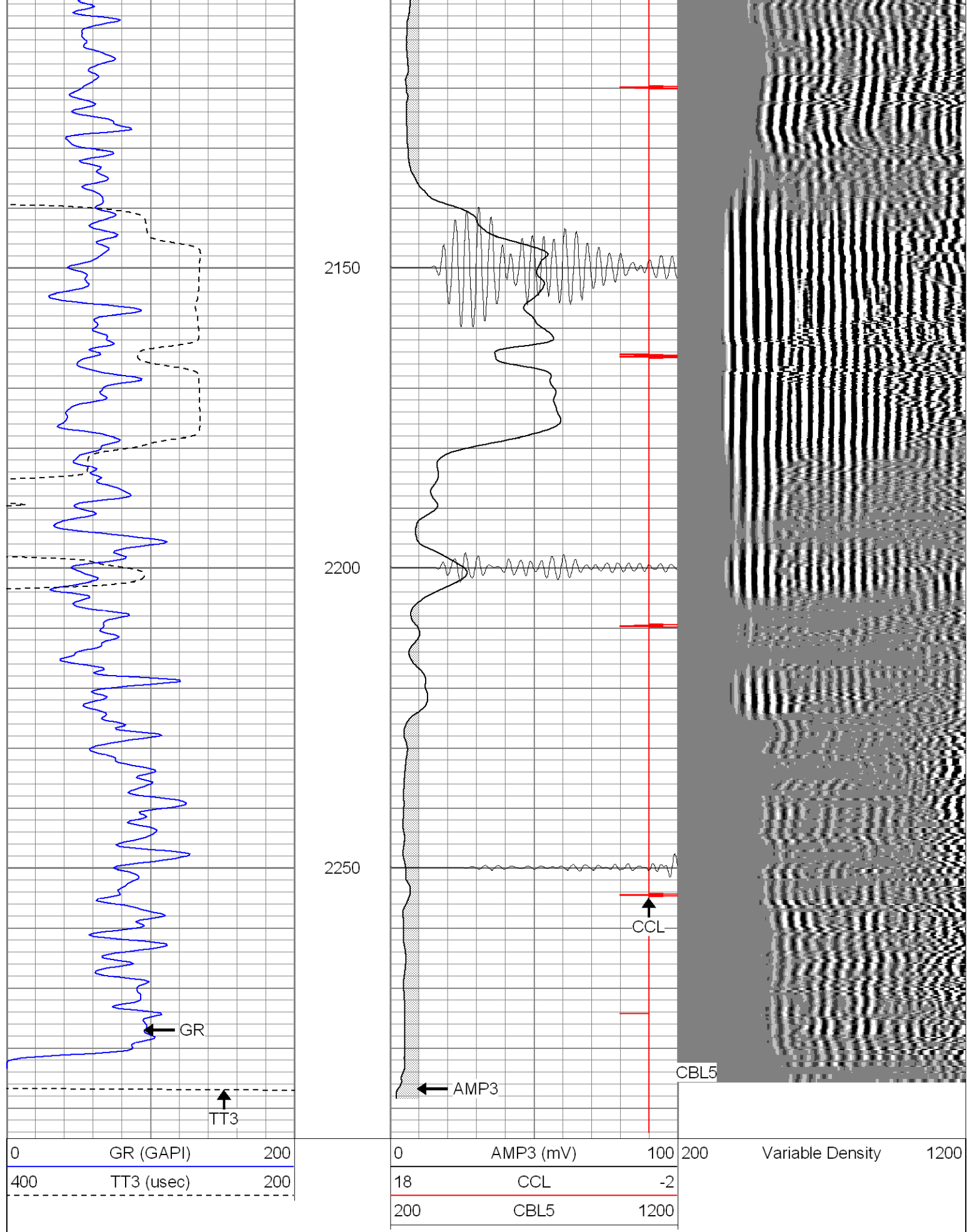
**SUPERIOR**

Black Lick, Pa.  
Mercer, Pa.  
Wooster, Oh.  
Cleveland, Ok.  
Trinidad, Co.

# Repeat Section 0 PSI

Database File: ge32-08b61207.db  
Dataset Pathname: pass1  
Presentation Format: cblrt  
Dataset Creation: Tue Jun 12 08:55:34 2007 by Log Std Casedhole 07051  
Charted by: Depth in Feet scaled 1:240





### Calibration Report

Database File: ge32-08b61207.db

Cement Bond Log Calibration Report

Serial Number:	Titan3		
Tool Model:	T3		
Performed:	Tue Jun 12 08:46:43 2007		
Depth:	0	ft	
Casing Diameter:	0	in	
	3' Spacing	5' Spacing	
Signal Zero:	1	1	mV
Calibrated Amplitude:	85	85	mV
Reading at Signal Zero:	-0.02	0.01	V
Reading in Free Pipe:	1.4	1.9	V
Gain:	59.1549	44.4444	
Offset:	2.1831	0.555556	

Gamma Ray Calibration Report

Serial Number:	Titan3	
Tool Model:	T2	
Performed:	Tue Jun 12 08:46:11 2007	
Calibrator Value:	1.0	GAPI
Background Reading:	0.0	cps
Calibrator Reading:	1.0	cps
Sensitivity:	1.1500	GAPI/cps