

Patterson

**SINGLE
INDUCTION
LOG**

Company	Pioneer Natural Resources		
Well	Le Mans 44-11 Tr		
Field	Purgatoire River		
County	Las Animas	State	Colorado
Location:	API # : 05 071 08643 00 483' FSL & 211' FEL		Other Services CDL
Permanent Datum	SEC 11 TWP 33S RGE 67W	Elevation	
Log Measured From	Ground Level	Elevation	K.B. 7577'
Drilling Measured From	Kelly Bushing 4' Above G.L.		D.F. -----
	Kelly Bushing		G.L. 7573'
Date	12-21-05		
Run Number	One		
Depth Driller	1385'		
Depth Logger	1385'		
Bottom Logged Interval	1383'		
Top Log Interval	Surface		
Casing Driller	8 5/8" @ 378'		
Casing Logger	378'		
Bit Size	7 7/8"		
Type Fluid in Hole	Water		
Density / Viscosity	///		
pH / Fluid Loss	///		
Source of Sample	///		
Rm @ Meas. Temp	///		
Rmf @ Meas. Temp	///		
Rmc @ Meas. Temp	///		
Source of Rmf / Rmc	///		
Rm @ BHT	///		
Time Circulation Stopped	6:00 A.M.		
Time Logger on Bottom	7:15 A.M.		
Maximum Recorded Temperature	78 DEG F		
Equipment Number	T720		
Location	Trinidad		
Recorded By	M. Norton		
Witnessed By	Mr. Ray Decker		

<<< Fold Here >>>

All interpretations are opinions based on inferences from electrical or other measurements and we cannot and do not guarantee the accuracy or correctness of any interpretation, and we shall not, except in the case of gross or willful negligence on our part, be liable or responsible for any loss, costs, damages, or expenses incurred or sustained by anyone resulting from any interpretation made by any of our officers, agents or employees. These interpretations are also subject to our general terms and conditions set out in our current Price Schedule.

Comments

Well Directions:
Sarcillio Left At Duck Pond, Main Road Thru Green Gate, Left At Y At Top Of Hill,
At Next Y Stay Right, First Right Thru Double Gates, First Right To Location.

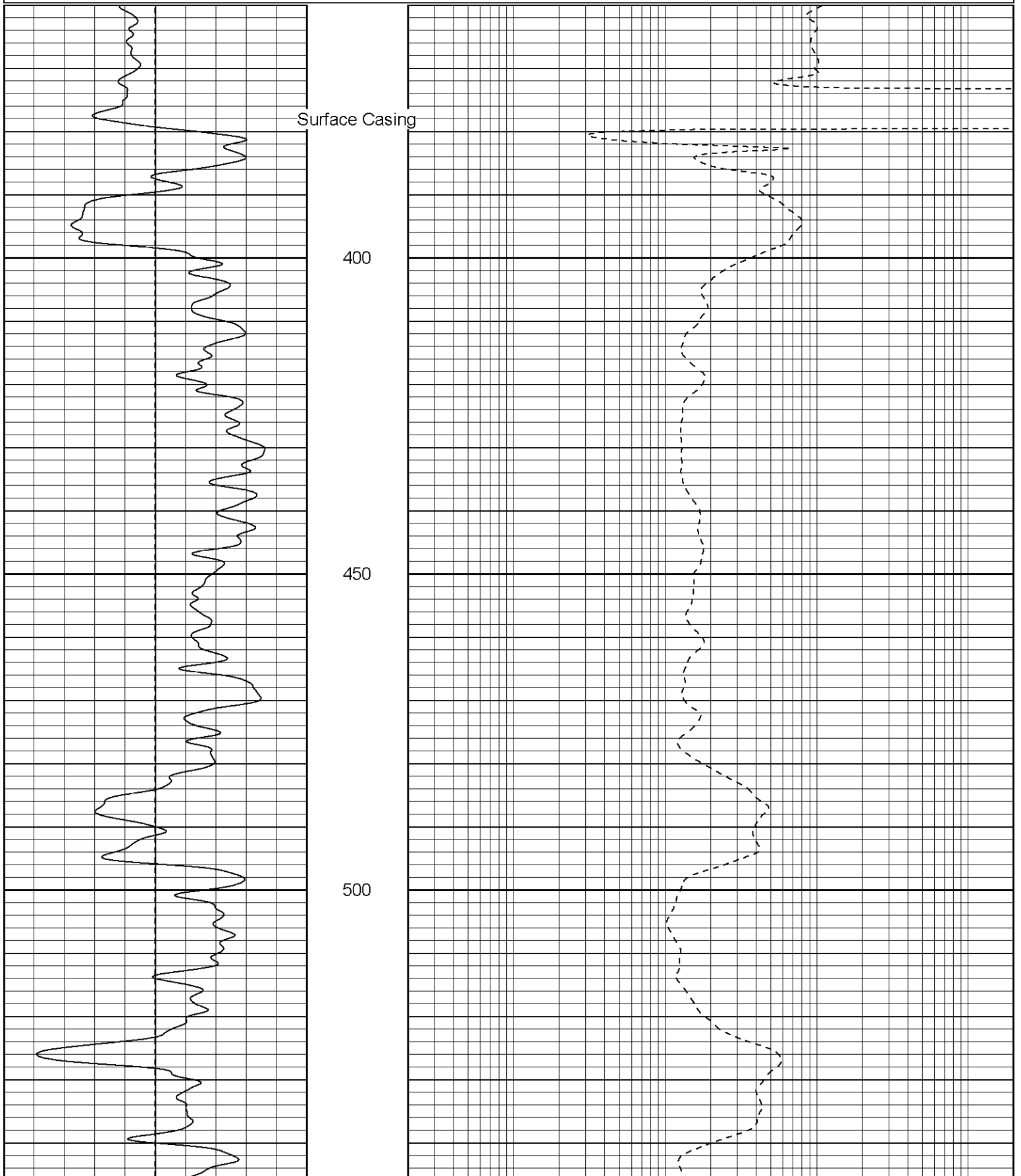
Patterson

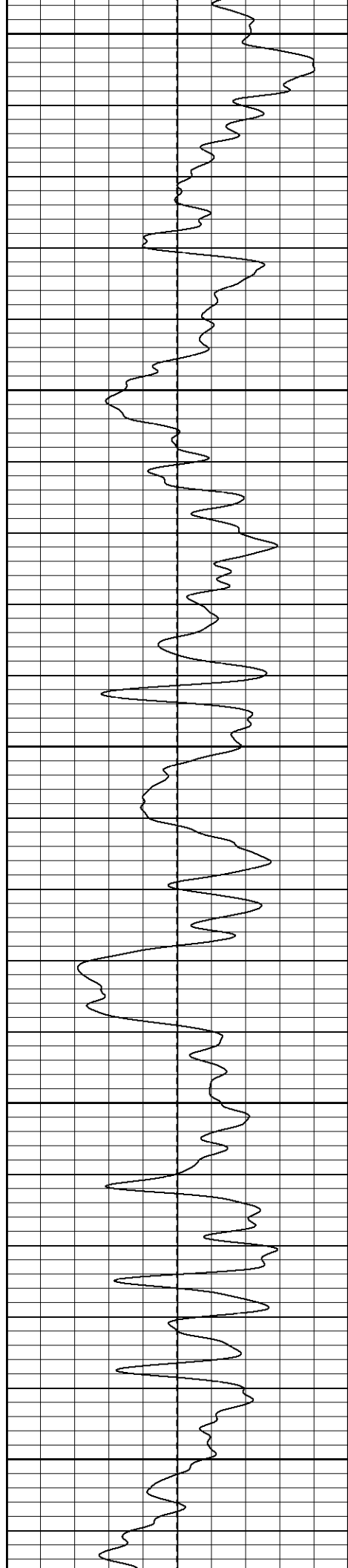
Main Pass

Database File: lemanstr.db
Dataset Pathname: pass2.1
Presentation Format: iel
Dataset Creation: Wed Dec 21 08:16:04 2005 by Calc Warrior 7.0 STD Ope
Charted by: Depth in Feet scaled 1:240

0	GR (GAPI)	200
-100	SP (mV)	100

0.2	DIR (Ohm-m)	2000
0.2	SN (Ohm-m)	2000





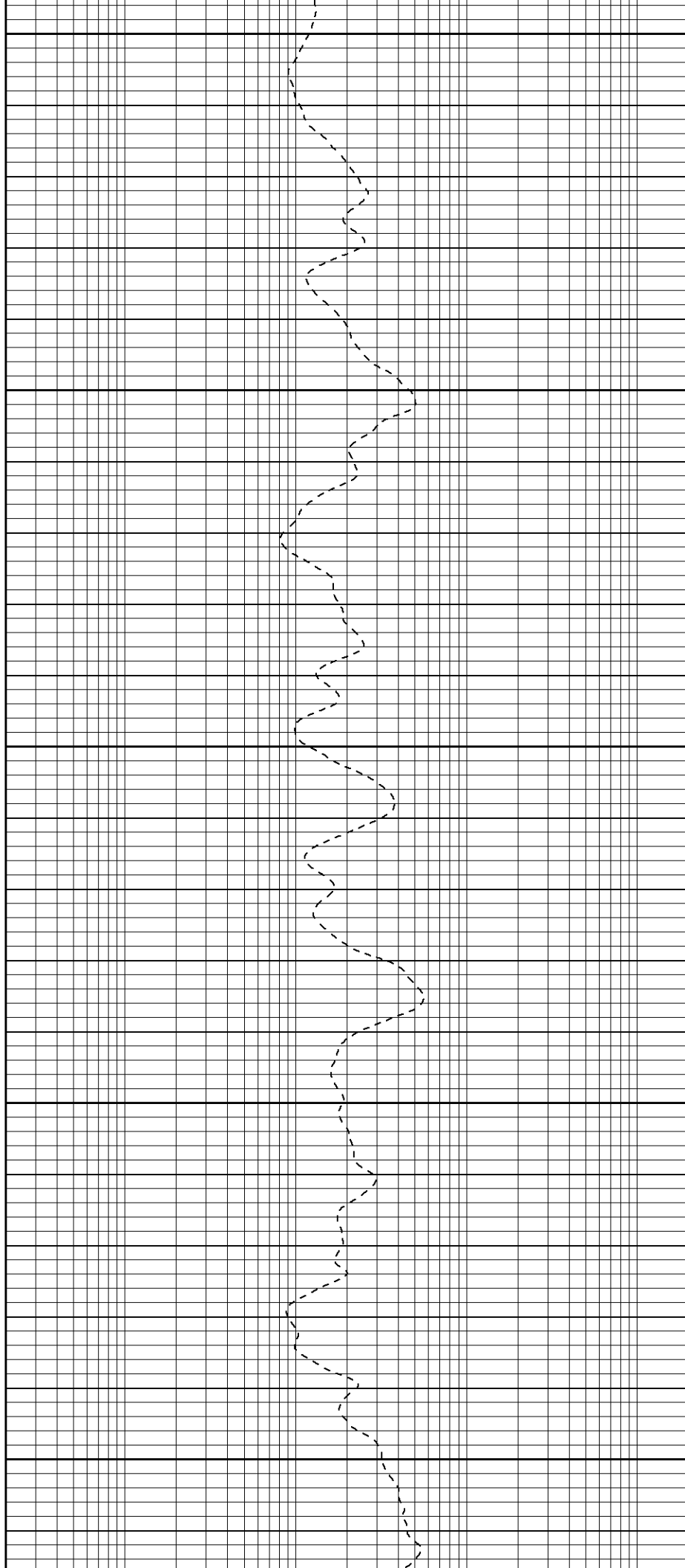
550

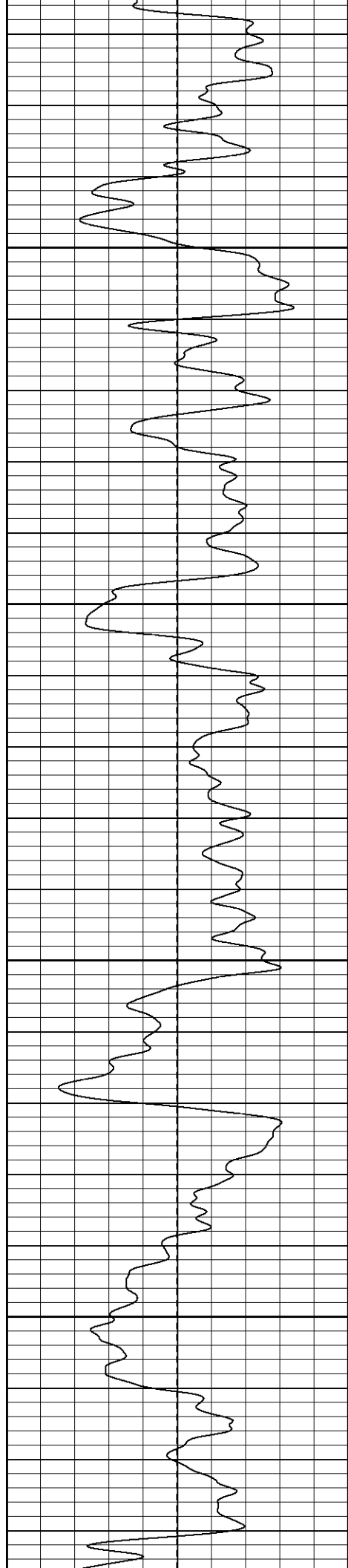
600

650

700

750



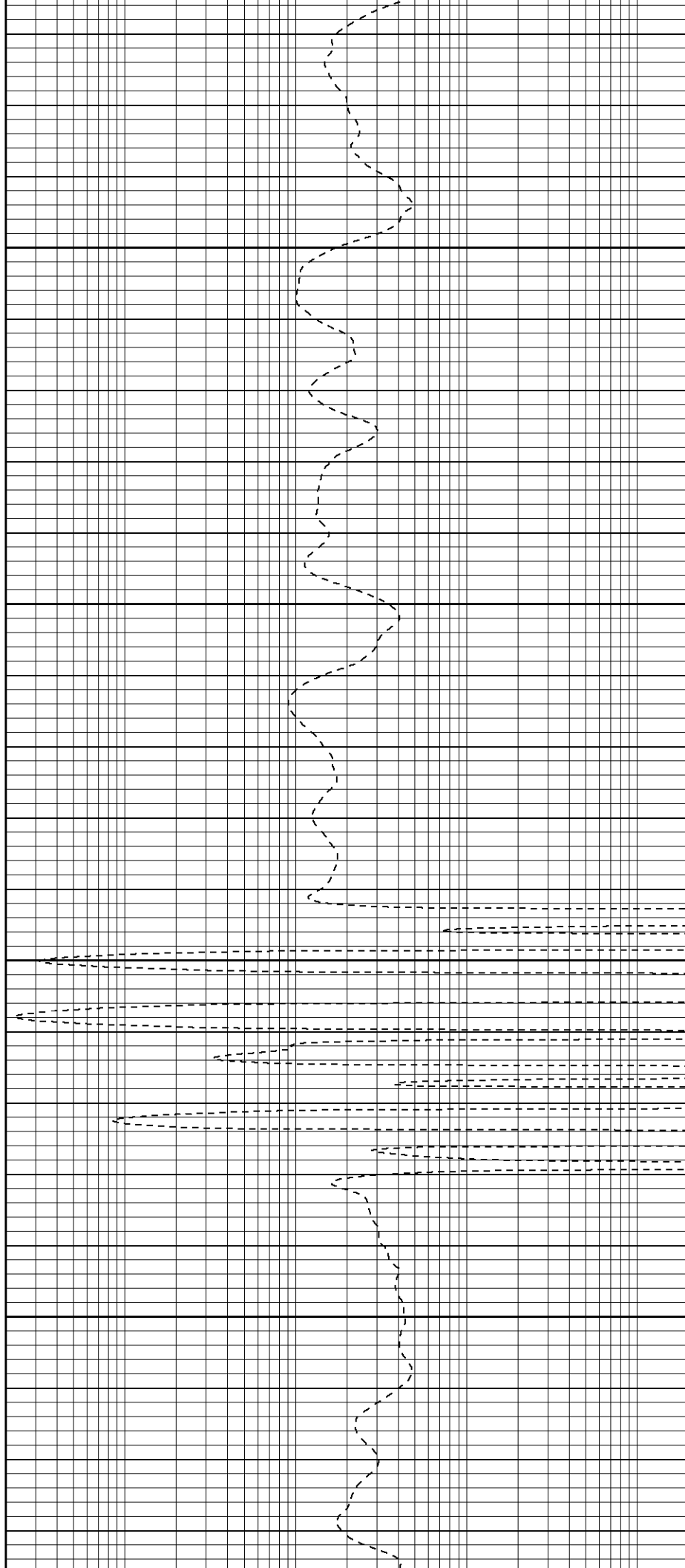


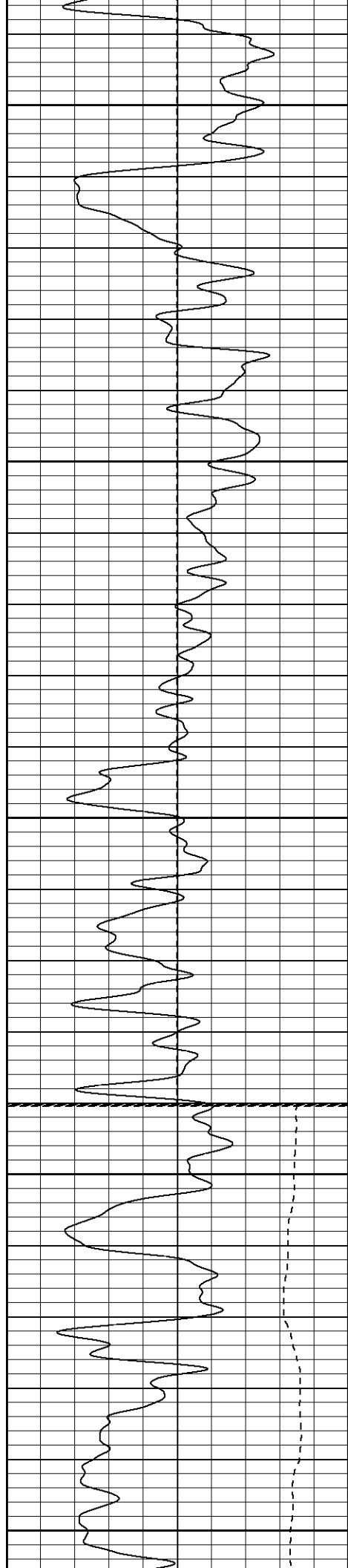
800

850

900

950





1000

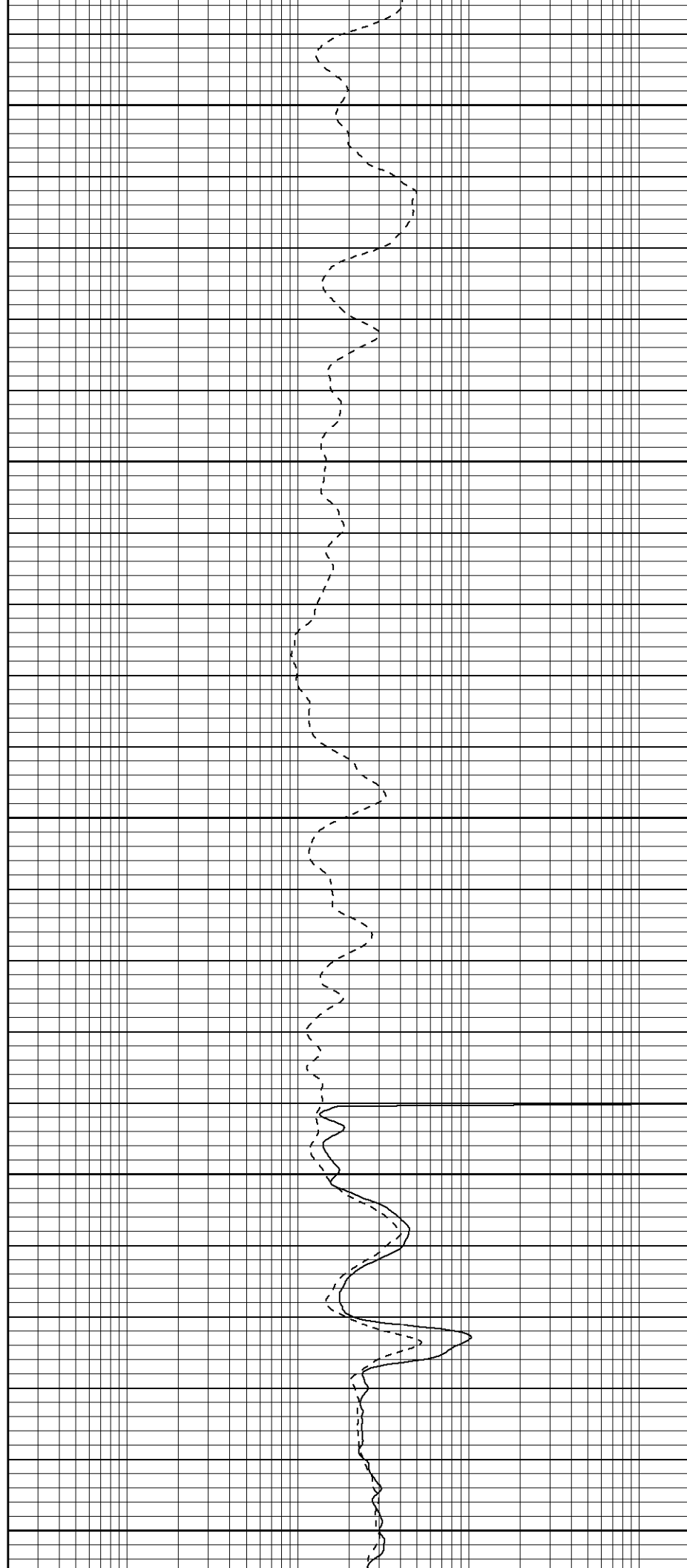
1050

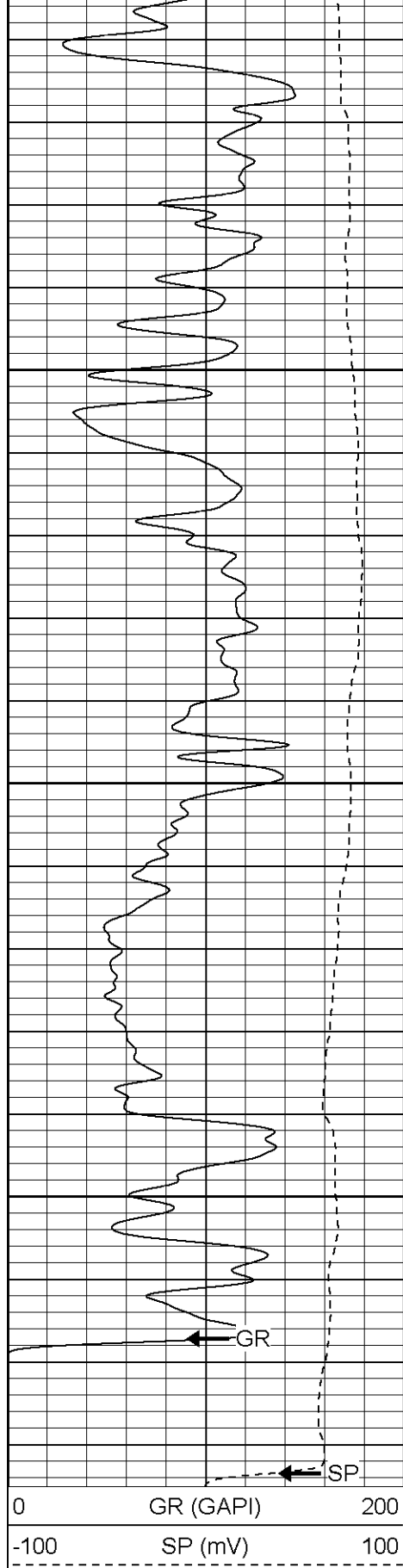
1100

Fluid Level

1150

1200





1250

1300

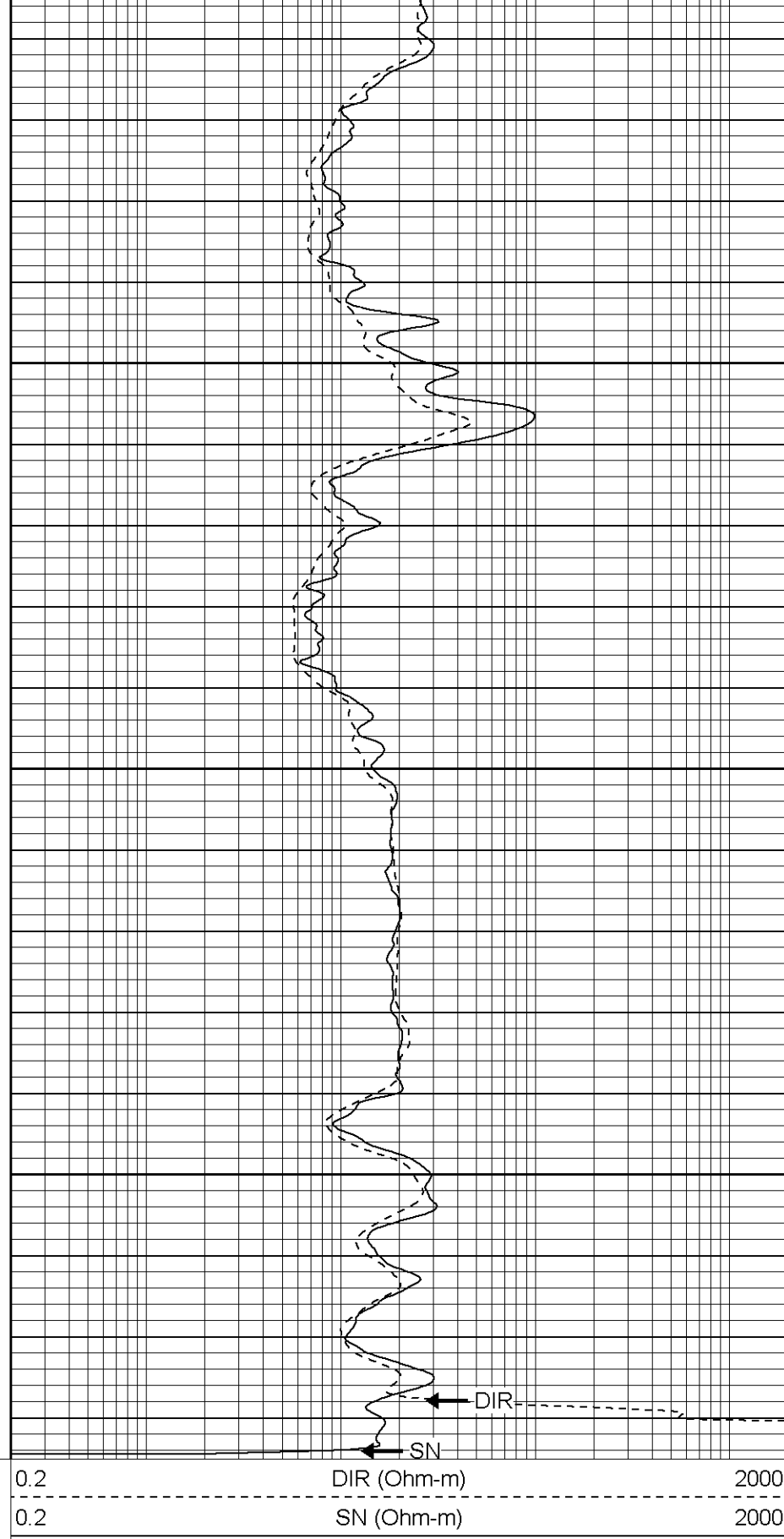
1350

GR

SP

0 GR (GAPI) 200

-100 SP (mV) 100



DIR (Ohm-m)

SN (Ohm-m)

2000

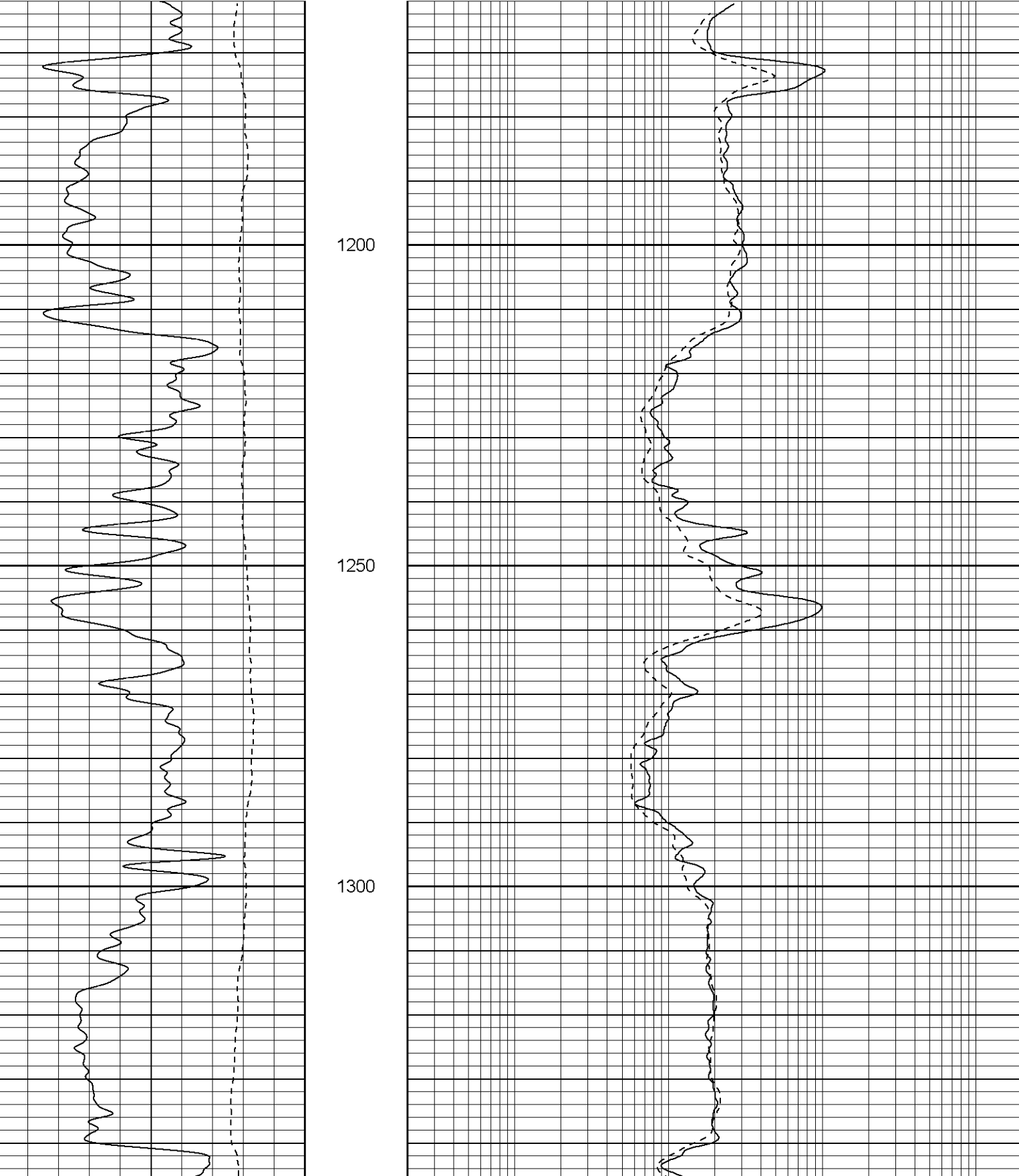
2000

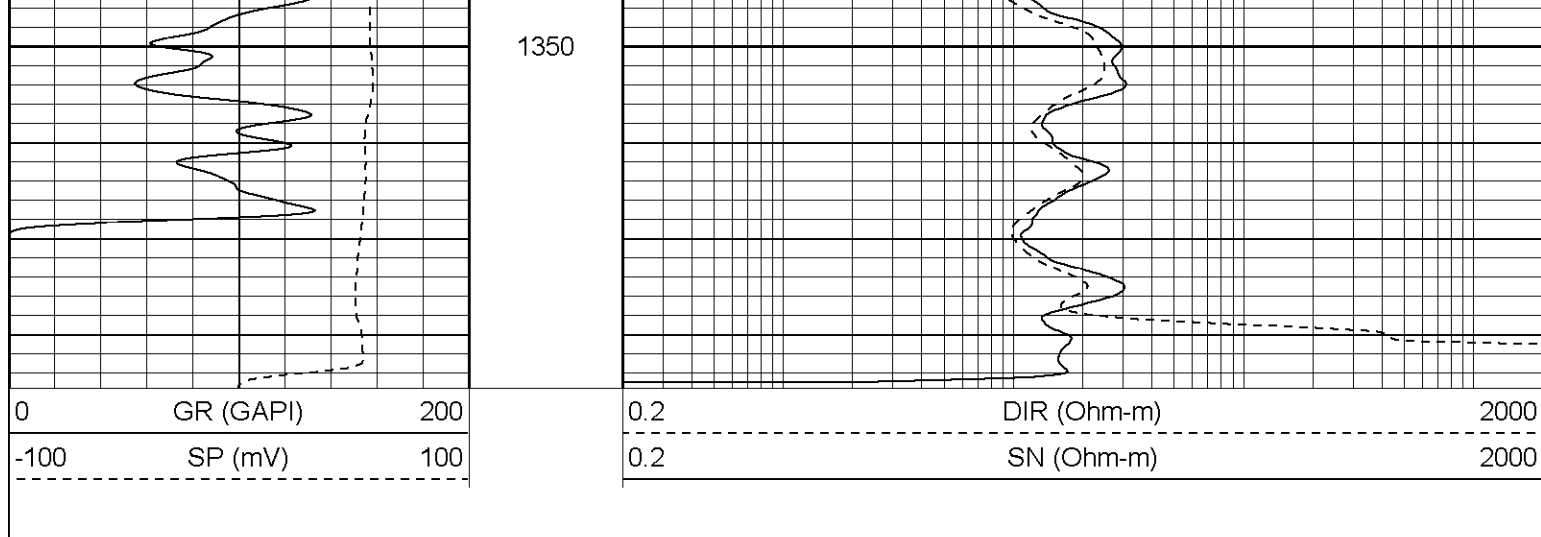
Patterson

Repeat Section

Database File: lemanstr.db
Dataset Pathname: pass1.1
Presentation Format: iel
Dataset Creation: Wed Dec 21 08:11:40 2005 by Calc Warrior 7.0 STD Ope
Charted by: Depth in Feet scaled 1:240

0	GR (GAPI)	200	0.2	DIR (Ohm-m)	2000
-100	SP (mV)	100	0.2	SN (Ohm-m)	2000





Induction Tool Calibration Report				
Serial Number:		902		
Tool Model:		G		
Downhole Cal Performed:		Fri Dec 02 18:01:44 2005		
Surface Cal Performed:		Tue Nov 29 14:01:16 2005		
Surface Calibration:		Air	Loop	
Conductivity Reference:		0.000	450.000	mmho
Conductivity Reading:		0.001	0.634	V
Internal Reference:		Zero	Cal	
Conductivity Reference:		0.000	500.000	mmho
Conductivity Reading:		0.002	0.633	V
Downhole Calibration:		Internal Zero	Internal Cal	
Conductivity Reference:		0.004	449.717	mmho
Conductivity Reading:		8.552	476.379	V
Short Normal Reference:		0.000	17.000	Ohm-m
Short Normal Reading:		0.011	0.207	V
Results:		Gain	Offset	
Loop Conductivity:		711.236	-0.730	
Downhole Correction:		0.961	-8.217	
Short Normal Resistivity:		95.000	-1.000	

Gamma Ray Calibration Report		
Serial Number:	2001	
Tool Model:	OH	
Performed:	Fri Dec 02 18:00:15 2005	
Calibrator Value:	1.0	GAPI
Background Reading:	0.0	cps
Calibrator Reading:	1.0	cps
Sensitivity:	0.2000	GAPI/cps

Sensor	Offset (ft)	Schematic	Description	Len (ft)	OD (in)	Wt (lb)
CHD	19.50		None	0.75	1.50	5.00
GR	17.25		GR-OH (2001) SIE	3.50	3.25	40.00

