



**SUPERIOR**  
Black Lick, Pa.  
Mercer, Pa.  
Wooster, Oh.  
Cleveland, Ok.  
Trinidad, Co.

## DUAL INDUCTION LOG

Company XTO Energy Inc.  
Well Golden Eagle 32-08  
Field Purgatoire River  
County Las Animas State Colorado

Location: API # : 05 071 09107 00

2857' FNL & 758' FEL

SEC 32 TWP 33S RGE 67W

Permanent Datum Ground Level Elevation 7743'  
Log Measured From Ground Level  
Drilling Measured From Ground Level

Other Services  
cdl  
neutron  
Elevation  
K.B. -----  
D.F. -----  
G.L. 7743'

Date 6-05-07

Run Number One

Depth Driller 2360'

Depth Logger 2356'

Bottom Logged Interval 2354'

Top Log Interval Surface Casing

Casing Driller 8 5/8" @ 494'

Casing Logger 495'

Bit Size 7 7/8"

Type Fluid in Hole Water

Density / Viscosity ///

pH / Fluid Loss ///

Source of Sample ///

Rm @ Meas. Temp ///

Rmf @ Meas. Temp ///

Rmc @ Meas. Temp ///

Source of Rmf / Rmc ///

Rm @ BHT ///

Time Circulation Stopped 6:00 A.M.

Time Logger on Bottom 8:30 A.M.

Maximum Recorded Temperature 114 DEG F

Equipment Number T697

Location Trinidad

Recorded By M. Norton

Witnessed By Mr. Don Johnson

<<< Fold Here >>>

All interpretations are opinions based on inferences from electrical or other measurements and we cannot and do not guarantee the accuracy or correctness of any interpretation, and we shall not, except in the case of gross or willful negligence on our part, be liable or responsible for any loss, costs, damages, or expenses incurred or sustained by anyone resulting from any interpretation made by any of our officers, agents or employees. These interpretations are also subject to our general terms and conditions set out in our current Price Schedule.

### Comments

#### Well Directions:

First Bosque entrance just before Weston, first right at Cherry Canyon, stay left at Y, stay on main road approx. four miles, first drive thru location on right.

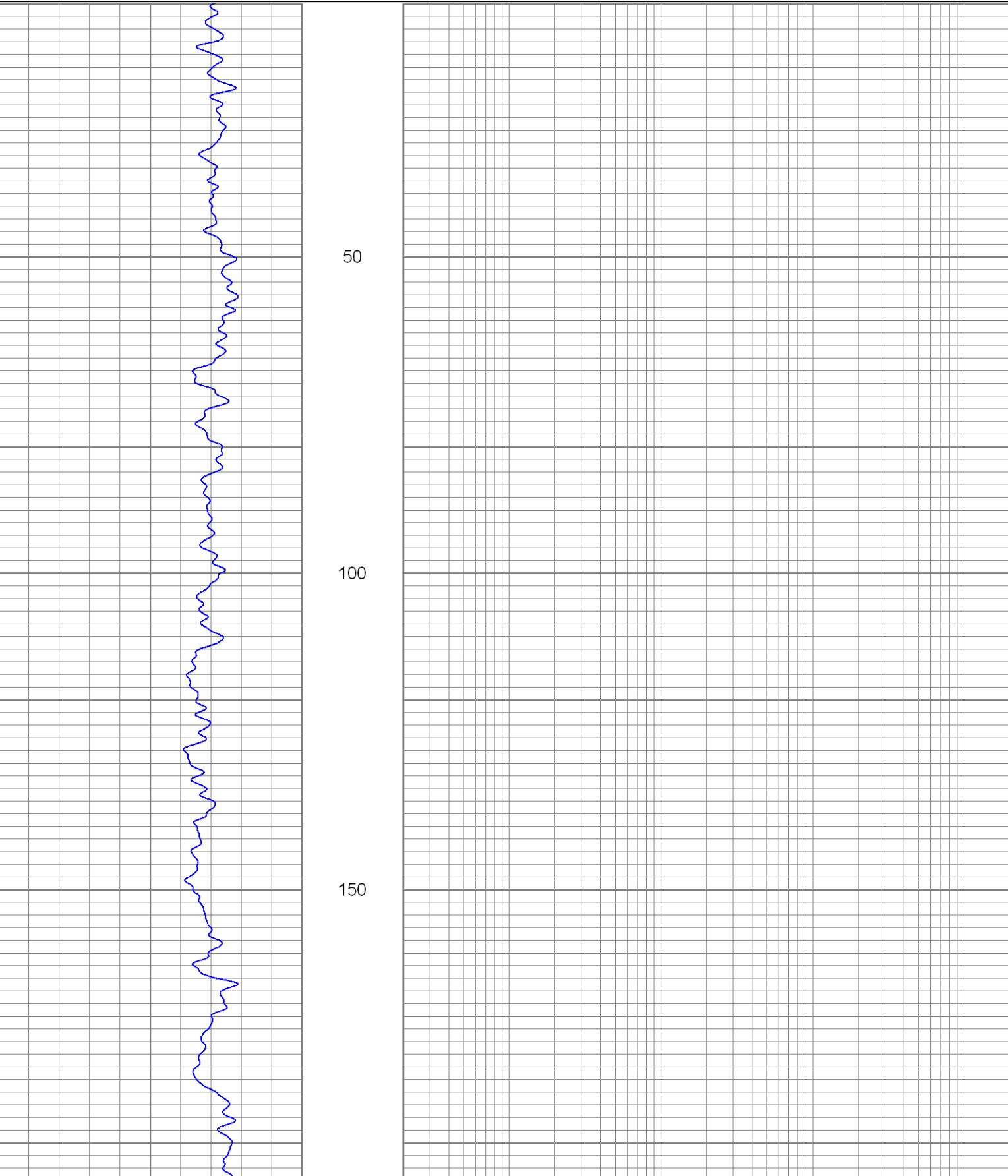


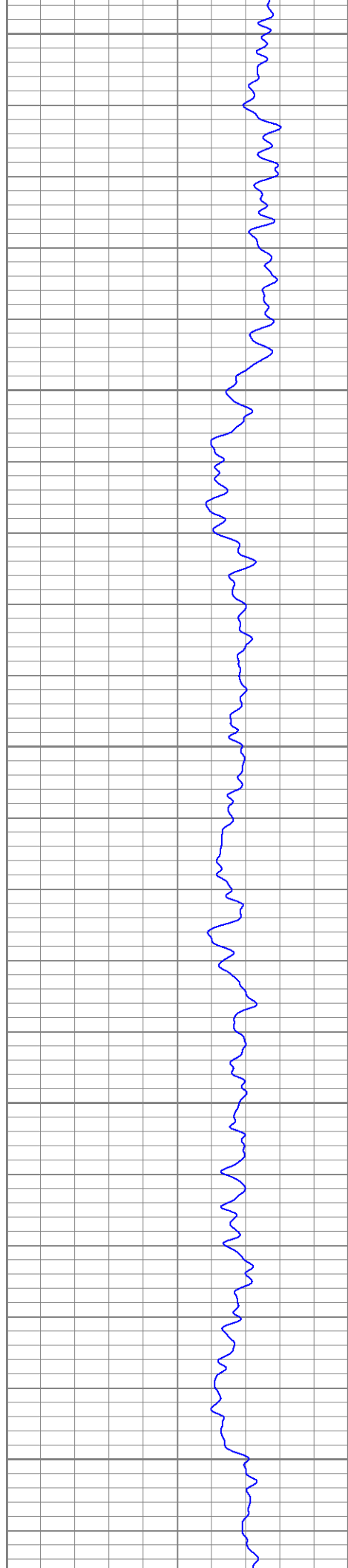
**SUPERIOR**  
Black Lick, Pa.  
Mercer, Pa.  
Wooster, Oh.  
Cleveland, Ok.  
Trinidad, Co.

# Main Pass

Database File: xtoge3208.db  
Dataset Pathname: pass2.1  
Presentation Format: dil  
Dataset Creation: Tue Jun 05 10:29:44 2007 by Calc Open-Cased 061129  
Charted by: Depth in Feet scaled 1:240

0	GR (GAPI)	200	0.2	RILM (Ohm-m)	2000
-100	SP (mV)	100	0.2	RILD (Ohm-m)	2000
			0.2	RLL3 (Ohm-m)	2000





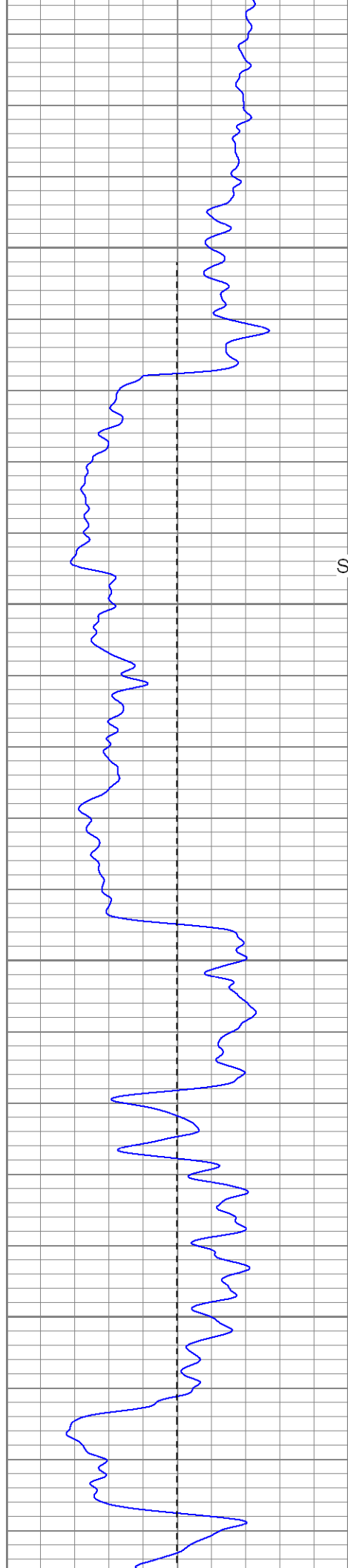
200

250

300

350

400



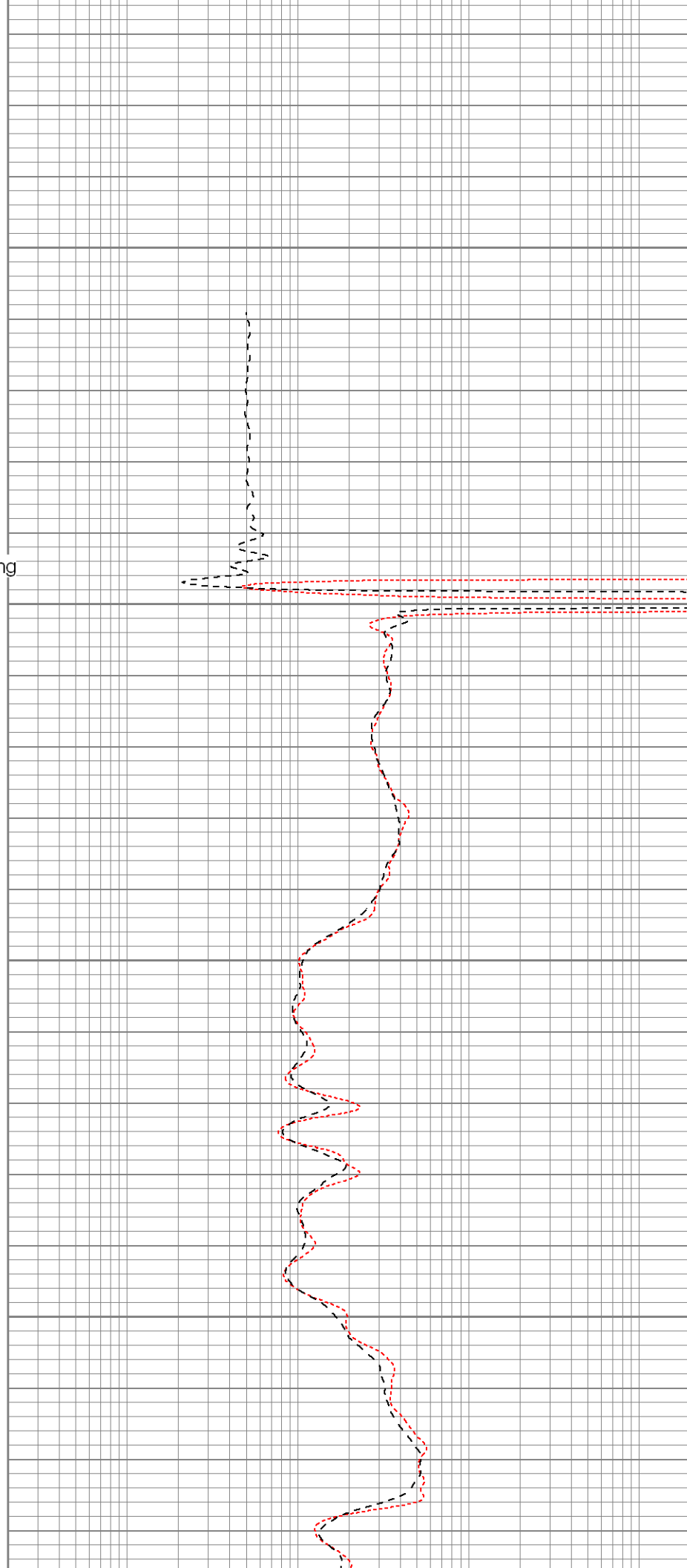
450

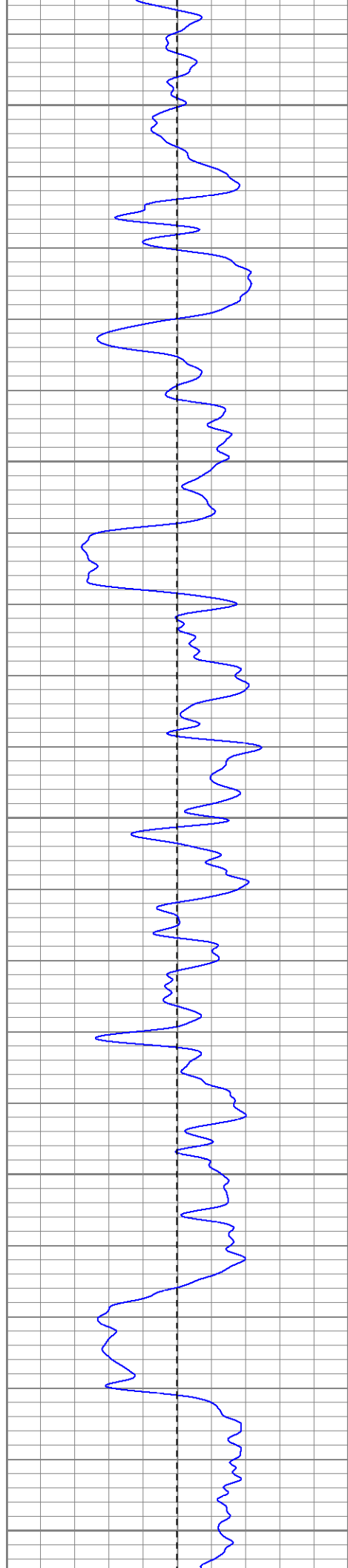
Surface Casing

500

550

600





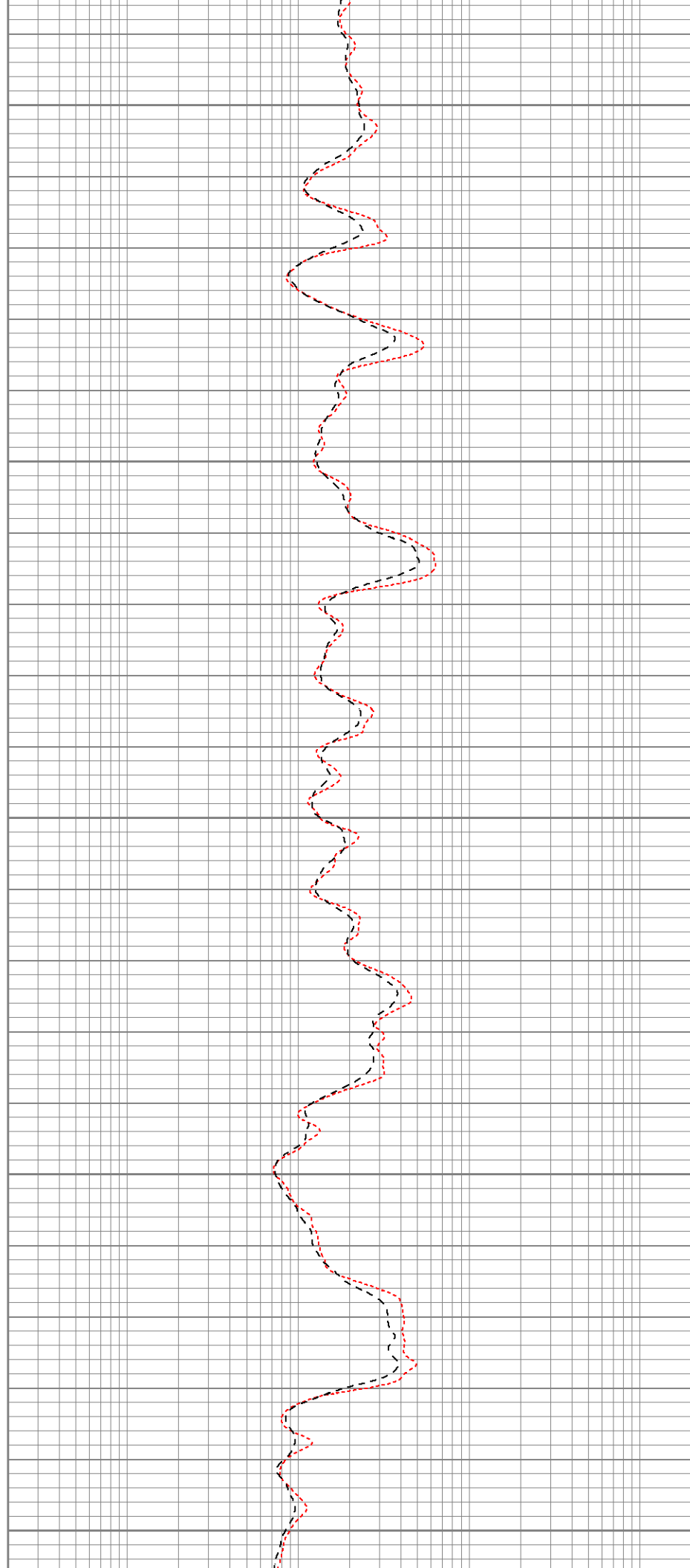
650

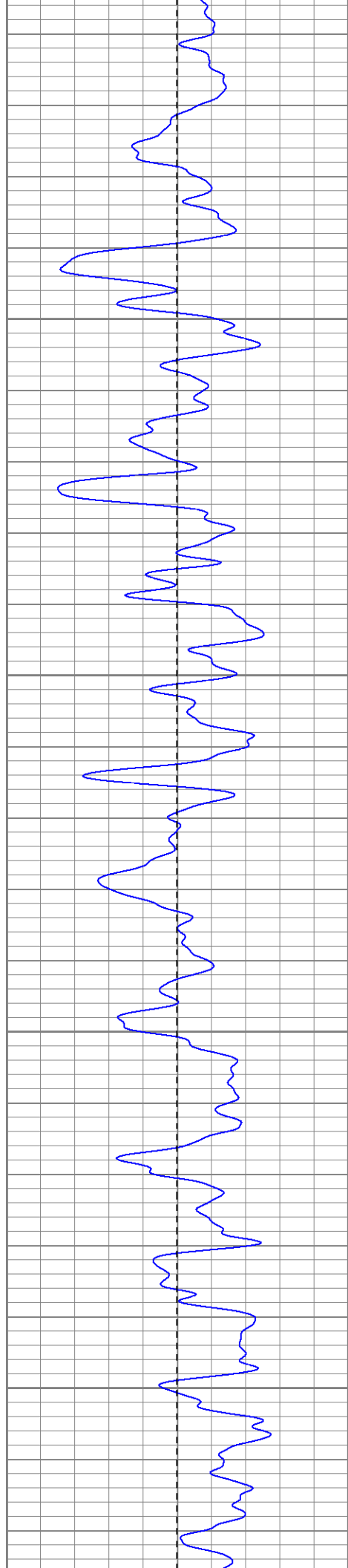
700

750

800

850



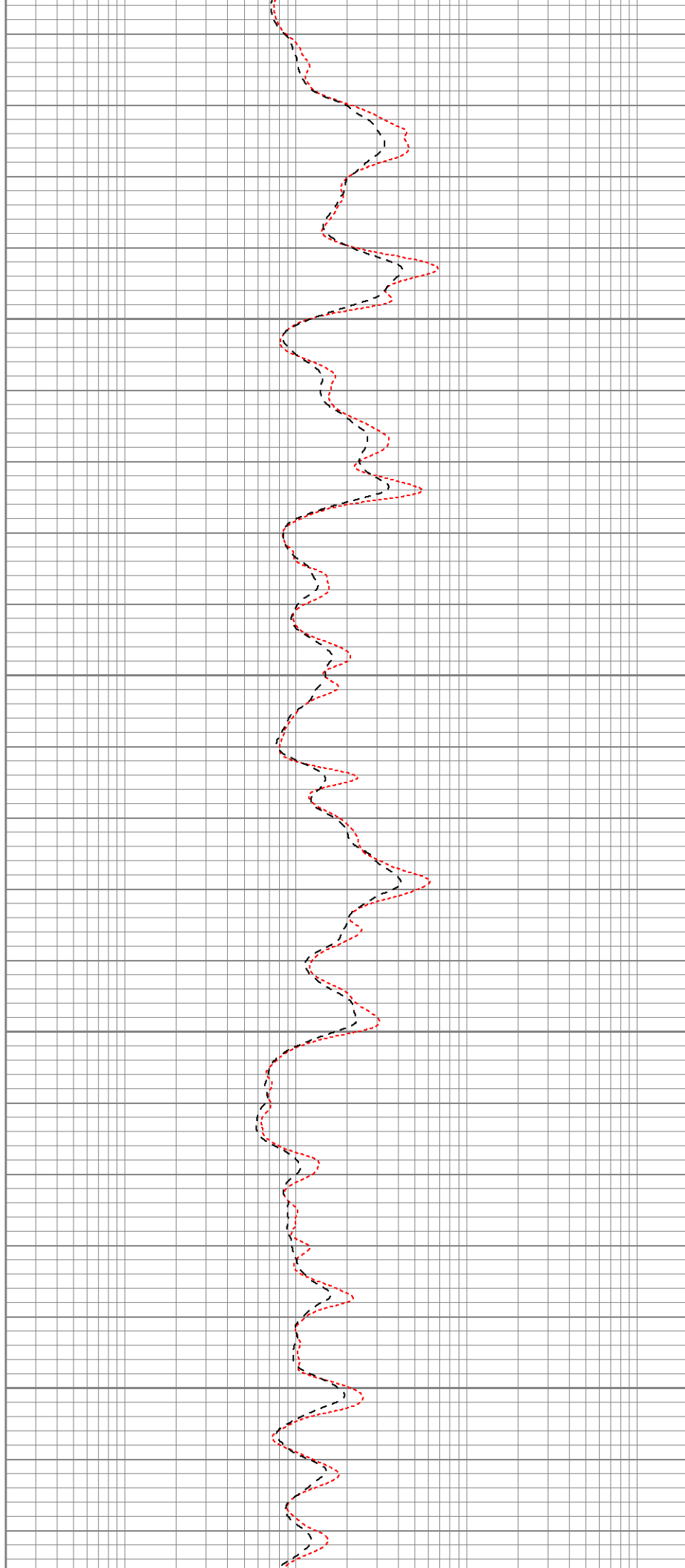


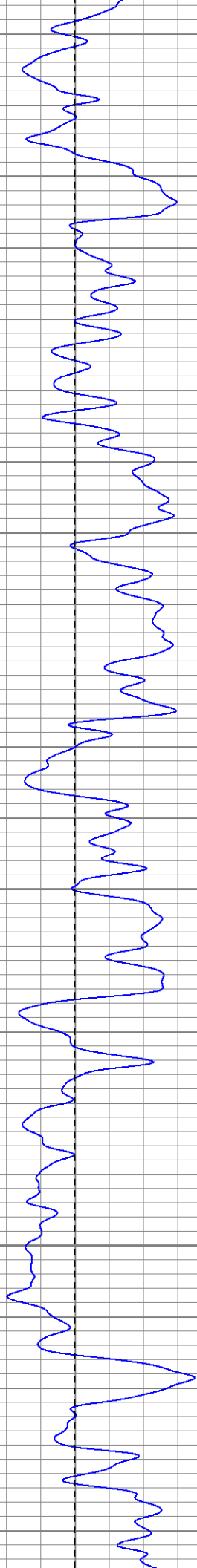
900

950

1000

1050



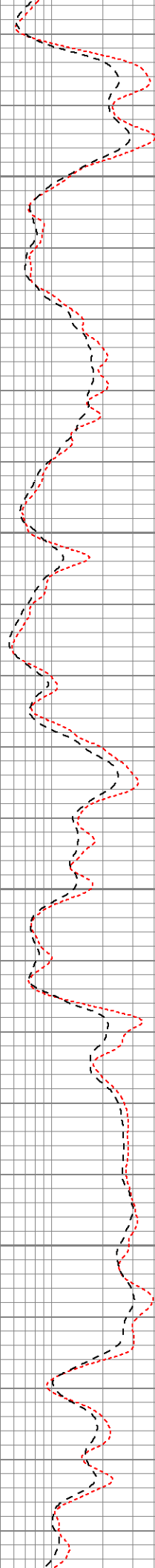


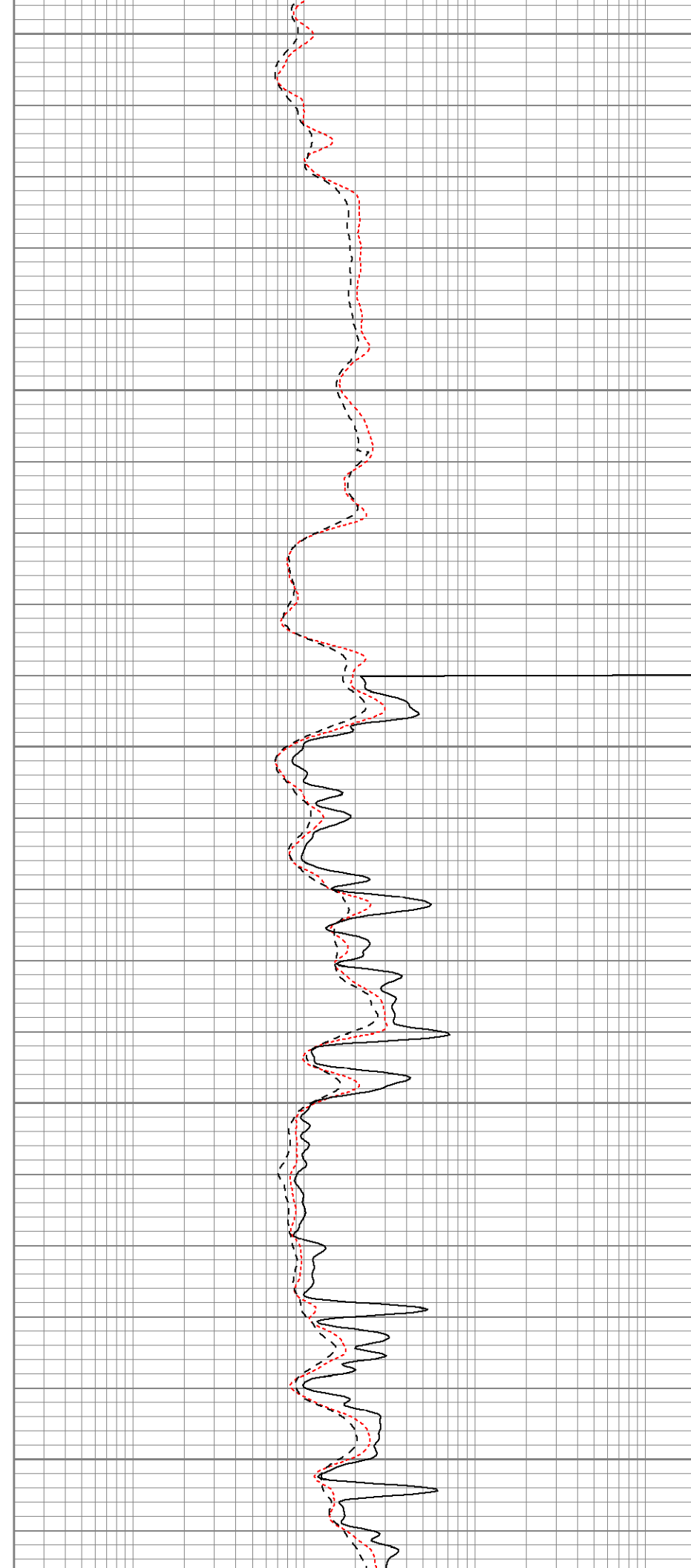
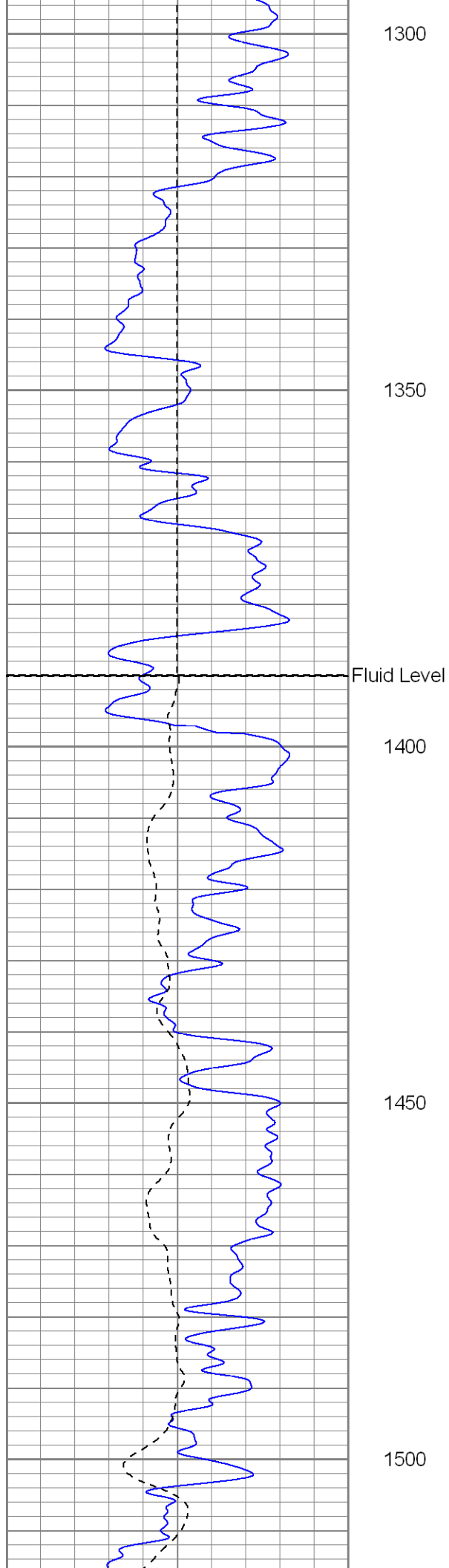
1100

1150

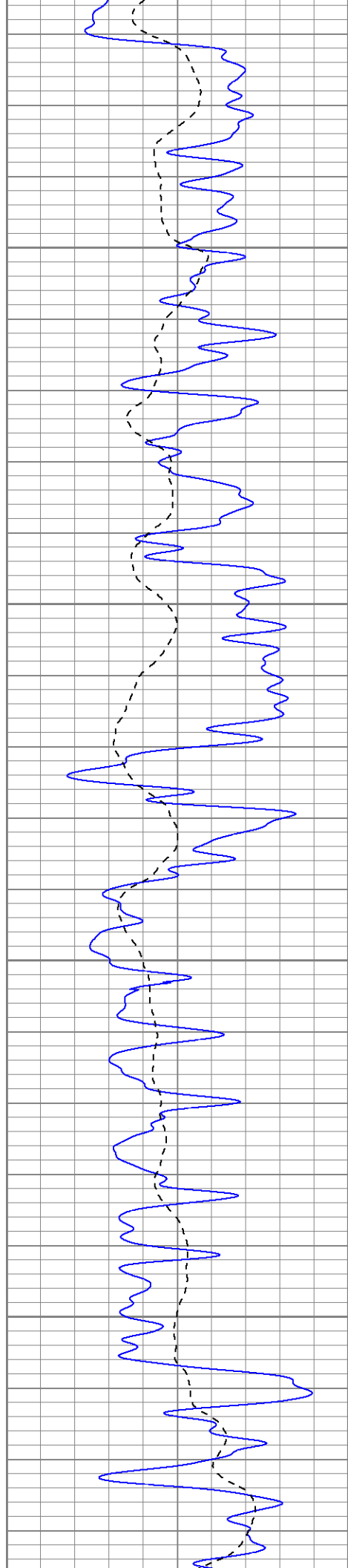
1200

1250







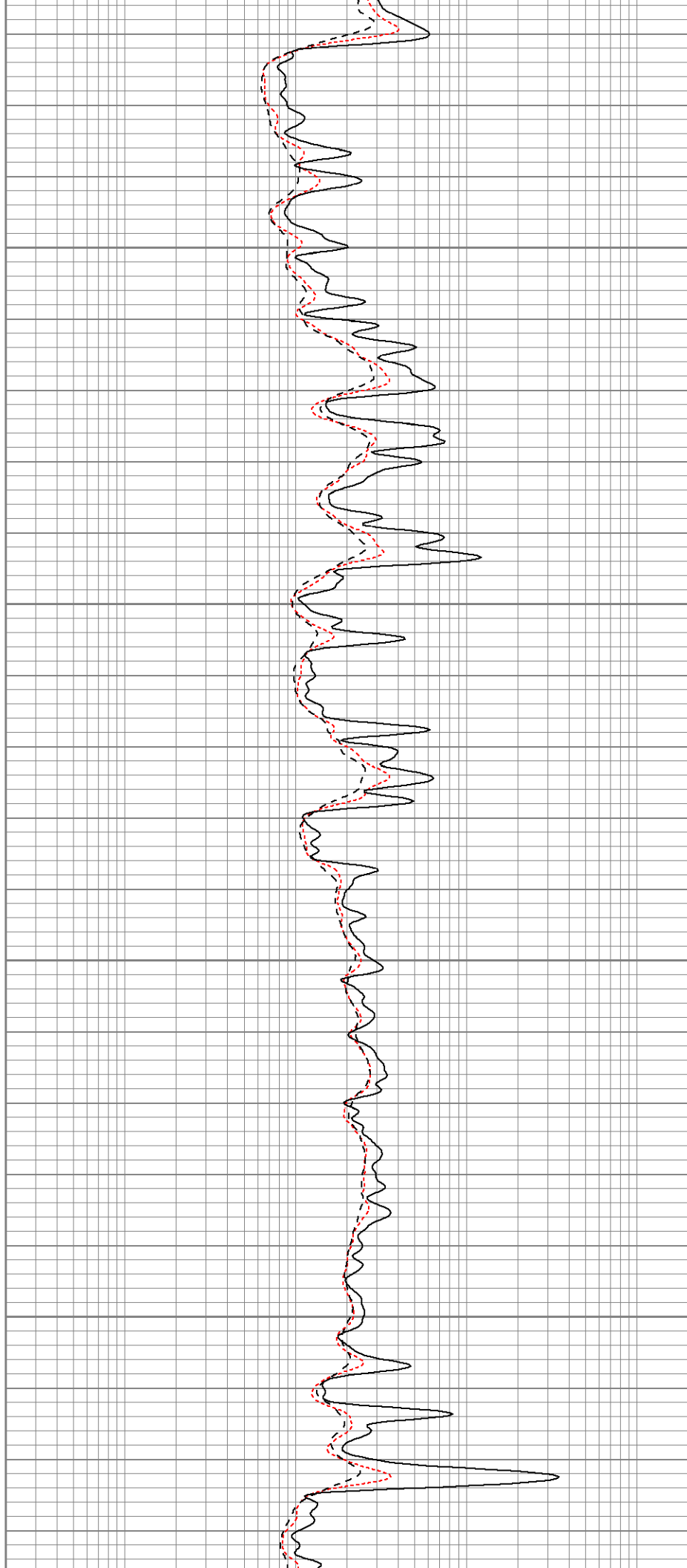


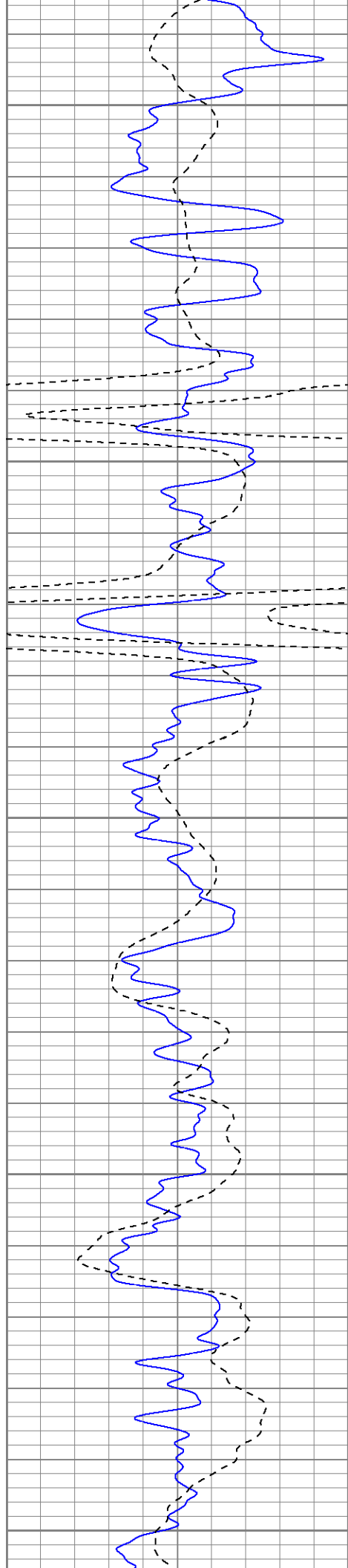
1550

1600

1650

1700





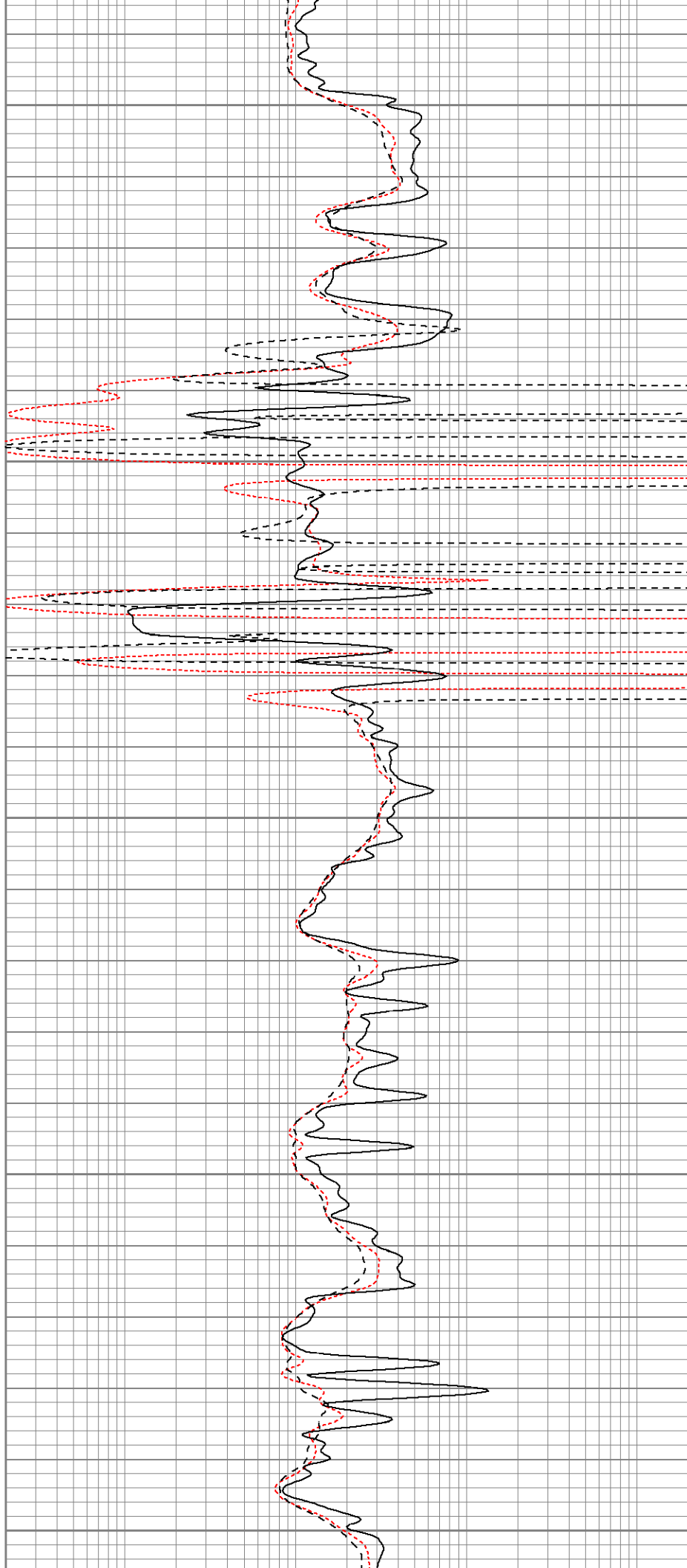
1750

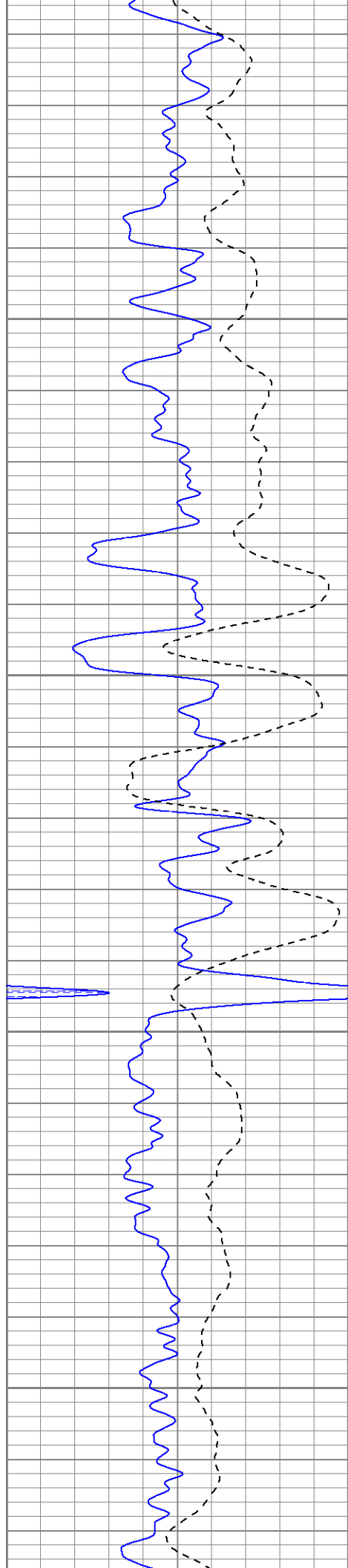
1800

1850

1900

1950



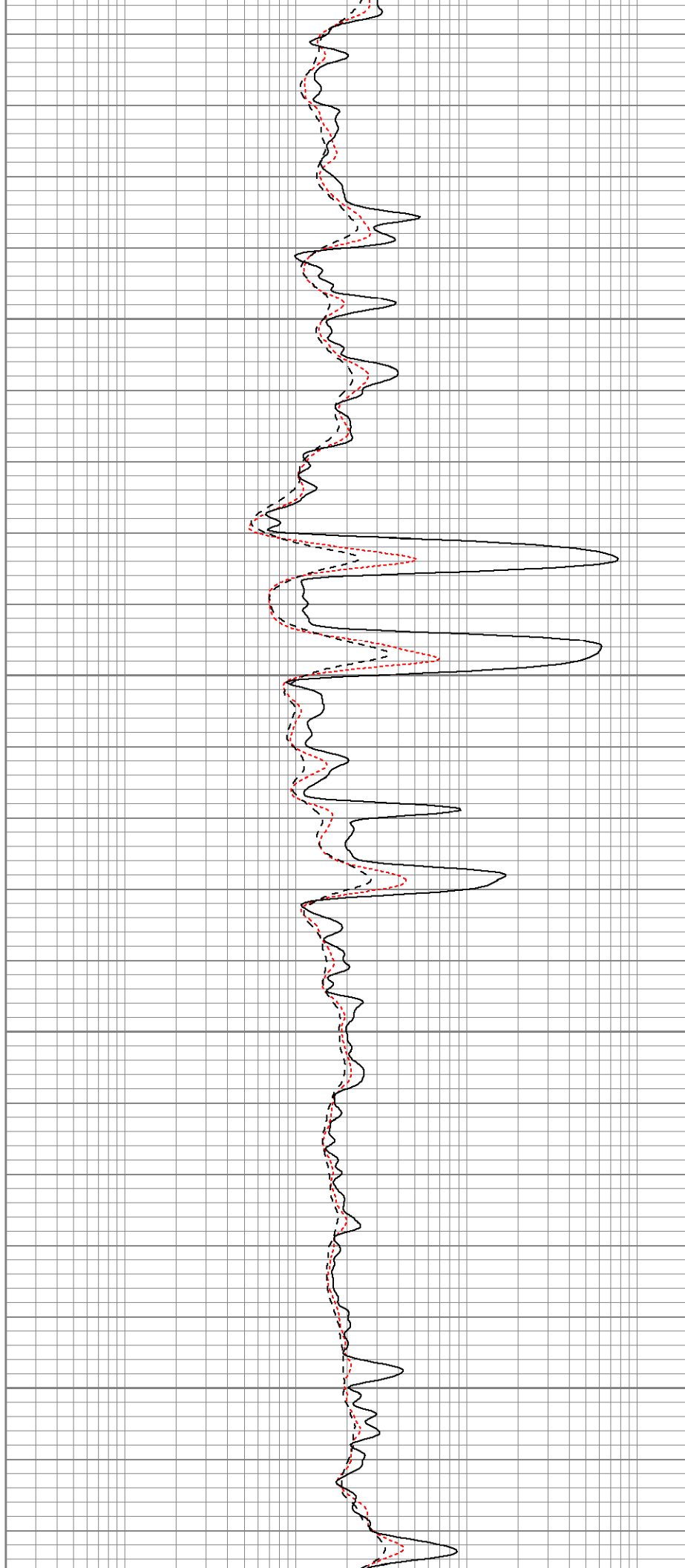


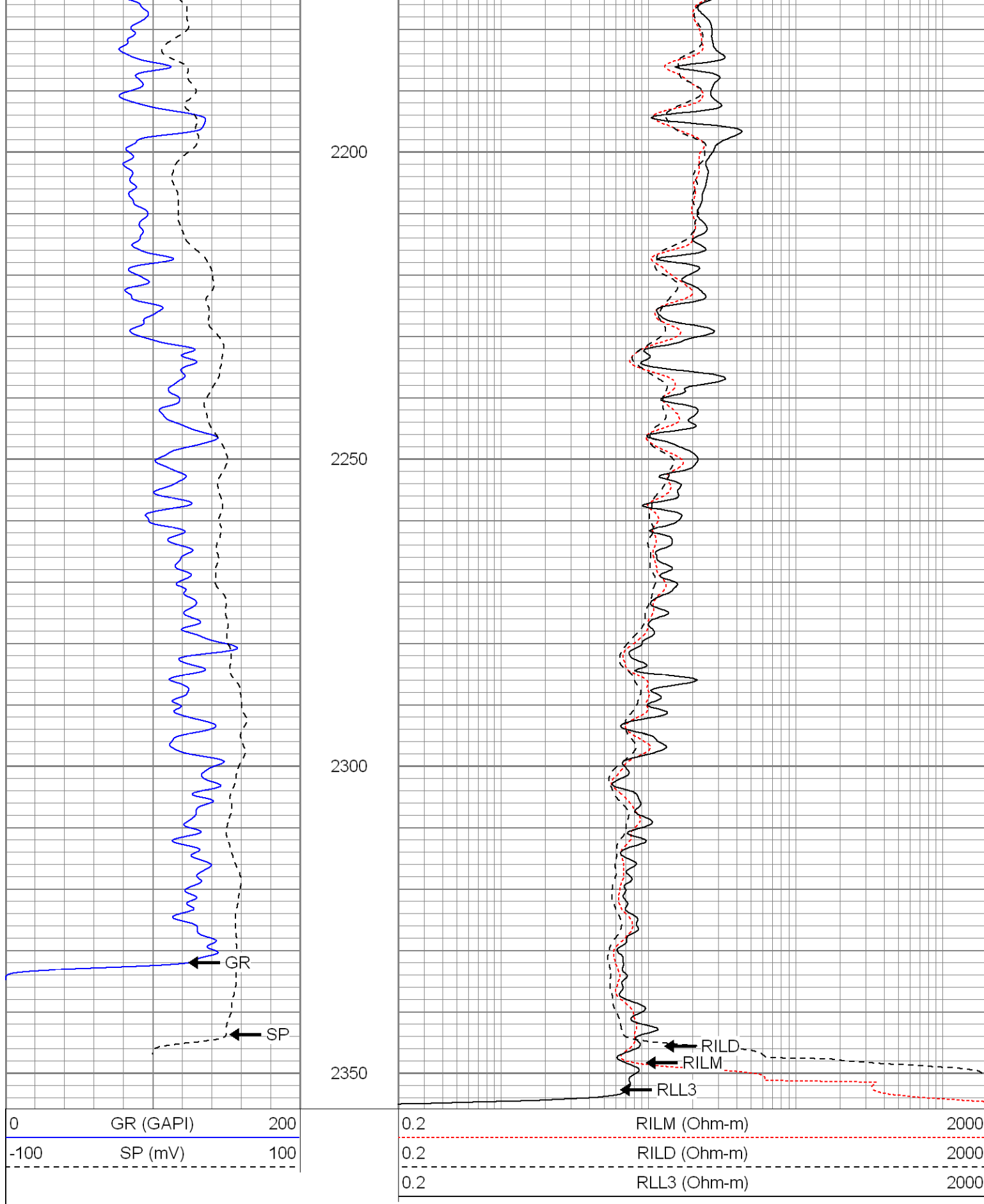
2000

2050

2100

2150





**SUPERIOR**

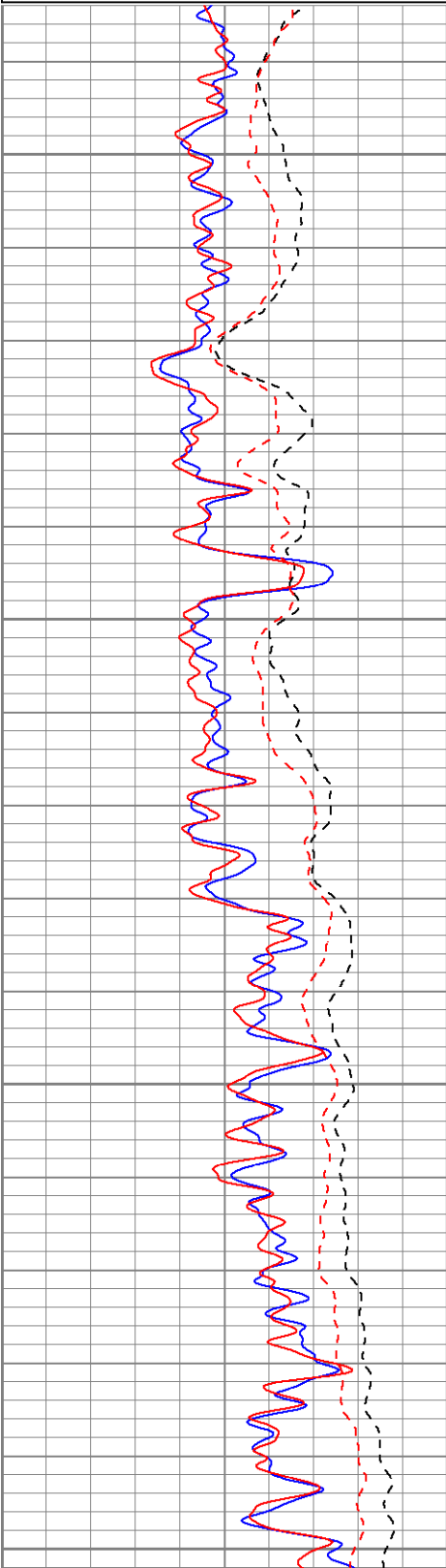
Black Lick, Pa.  
Meroer, Pa.  
Wooster, Oh.  
Cleveland, Ok.  
Trinidad, Co.

# Repeat Section

Database File: xtoge3208.db  
Dataset Pathname: pass1.1  
Presentation Format: dil  
Dataset Creation: Tue Jun 05 10:29:11 2007 by Calc Open-Cased 061129  
Charted by: Depth in Feet scaled 1:240

0	GR (GAPI)	200
-100	SP (mV)	100
0	GR-repeat (GAPI)	200
-100	SP-repeat (mV)	100

0.2	RILM (Ohm-m)	2000
0.2	RILD (Ohm-m)	2000
0.2	RLL3 (Ohm-m)	2000
0.2	RLL3-repeat (Ohm-m)	2000
0.2	RILM-repeat (Ohm-m)	2000
0.2	RILD-repeat (Ohm-m)	2000

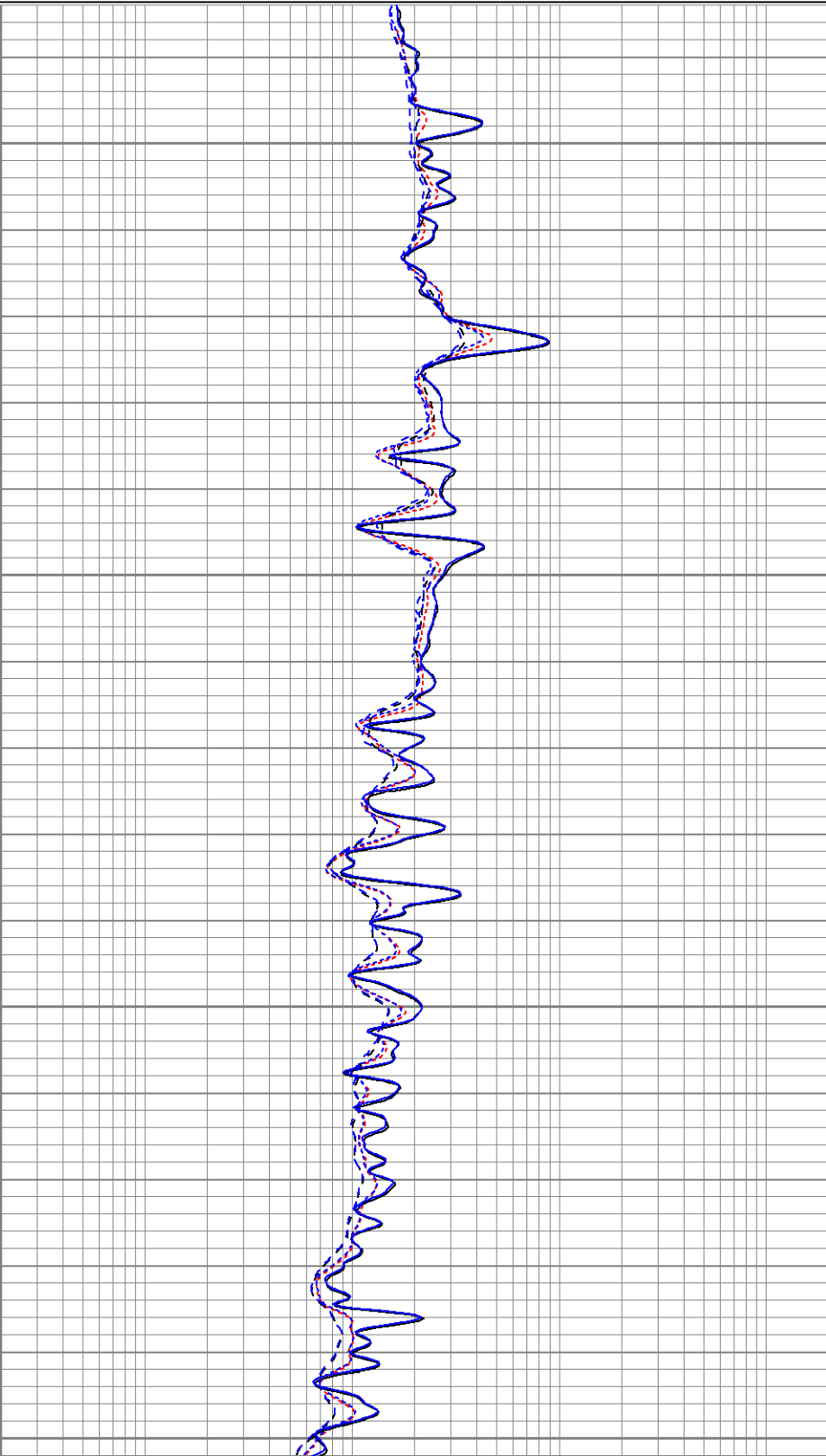


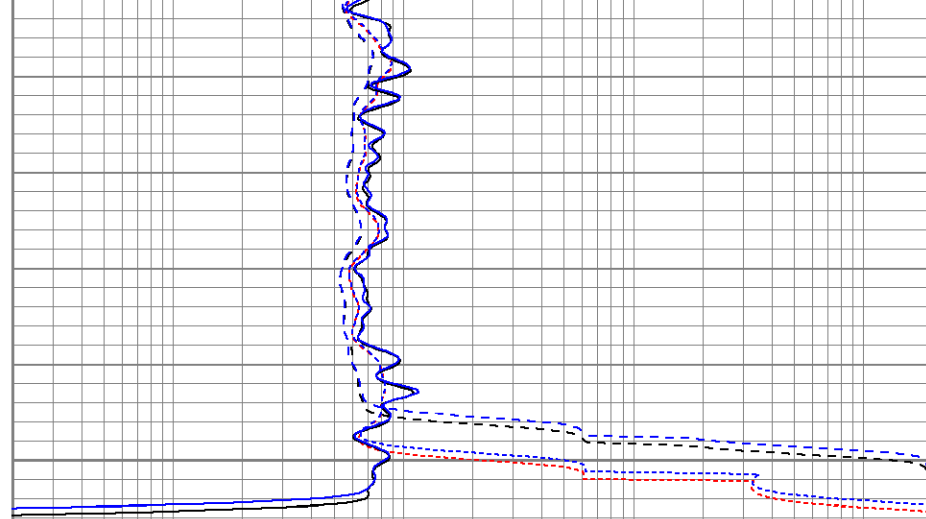
2150

2200

2250

2300





0.2	RILM (Ohm-m)	2000
0.2	RILD (Ohm-m)	2000
0.2	RLL3 (Ohm-m)	2000
0.2	RLL3-repeat (Ohm-m)	2000
0.2	RILM-repeat (Ohm-m)	2000
0.2	RILD-repeat (Ohm-m)	2000

Serial Number: 2001  
Tool Model: OH

Performed:	Tue May 29 19:51:06 2007	
Calibrator Value:	1.0	GAPI
Background Reading:	0.0	cps
Calibrator Reading:	1.0	cps
Sensitivity:	0.1700	GAPI/cps

[illegible]