

Patterson

DUAL
INDUCTION
LOG

Company XTO Energy, Inc.		Company XTO Energy, Inc.	
Well Golden Eagle 34-07		Well Golden Eagle 34-07	
Field Purgatoire River		Field Purgatoire River	
County Las Animas		County Las Animas	
State CO		State CO	
Location: API # : 05 071 08816 00		Other Services CDL NEUTRON	
SEC 34 TWP 33S RGE 67W		Elevation	
Permanent Datum	Ground Level	Elevation	7196'
Log Measured From	Ground Level		
Drilling Measured From	Ground Level		
Date 7-7-06			
Run Number	One		
Depth Driller	1885'		
Depth Logger	1885'		
Bottom Logged Interval	1883'		
Top Log Interval	Surface Casing		
Casing Driller	8 5/8" @ 218'		
Casing Logger	218'		
Bit Size	7 7/8"		
Type Fluid in Hole	Water		
Density / Viscosity	///		
pH / Fluid Loss	///		
Source of Sample	///		
Rm @ Meas. Temp	///		
Rmf @ Meas. Temp	///		
Rmc @ Meas. Temp	///		
Source of Rmf / Rmc	///		
Rm @ BHT	///		
Time Circulation Stopped	9:30 A.M.		
Time Logger on Bottom	11:30 P.M.		
Maximum Recorded Temperature	101 DEG F		
Equipment Number	T720		
Location	Trinidad		
Recorded By	M. Norton		
Witnessed By	Mr. Don Johnson		

<<< Fold Here >>>

All interpretations are opinions based on inferences from electrical or other measurements and we cannot and do not guarantee the accuracy or correctness of any interpretation, and we shall not, except in the case of gross or willful negligence on our part, be liable or responsible for any loss, costs, damages, or expenses incurred or sustained by anyone resulting from any interpretation made by any of our officers, agents or employees. These interpretations are also subject to our general terms and conditions set out in our current Price Schedule.

Comments

Well Directions:
First Bosque entrance, right on Cherry Canyon, at first Y stay right,
stay on main road end on location.

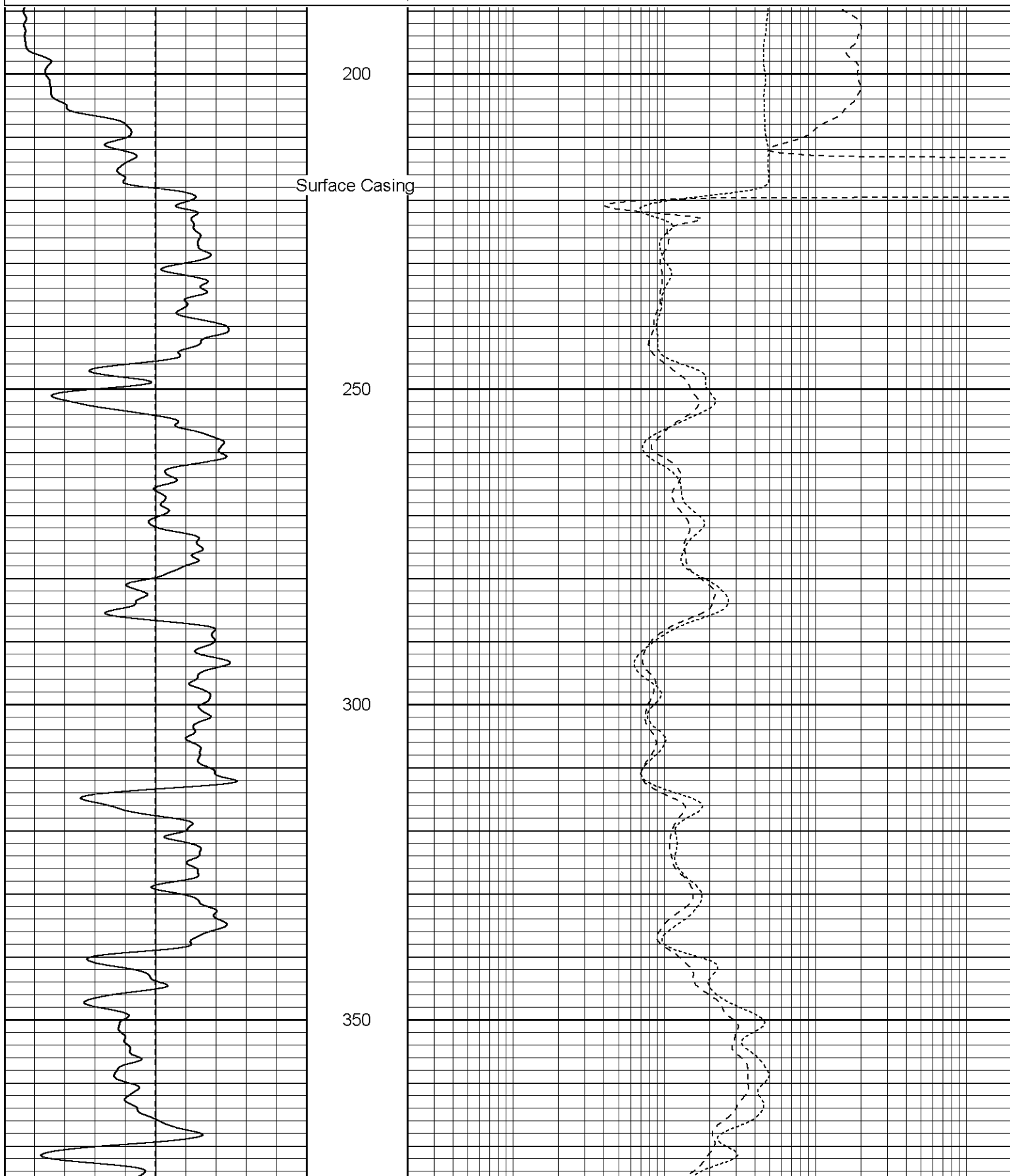
Patterson

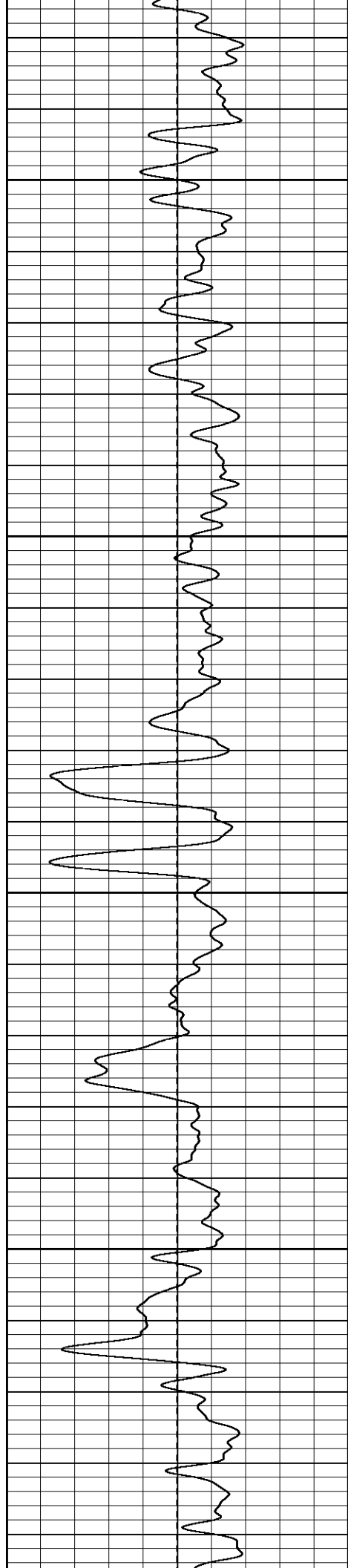
Main Pass

Database File: xtoge3407.db
Dataset Pathname: pass2.1
Presentation Format: dil
Dataset Creation: Fri Jul 07 13:26:10 2006 by Calc Warrior 7.0 STD Ope
Charted by: Depth in Feet scaled 1:240

0	GR (GAPI)	200
-100	SP (mV)	100

0.2	RILM (Ohm-m)	2000
0.2	RILD (Ohm-m)	2000
0.2	RLL3 (Ohm-m)	2000



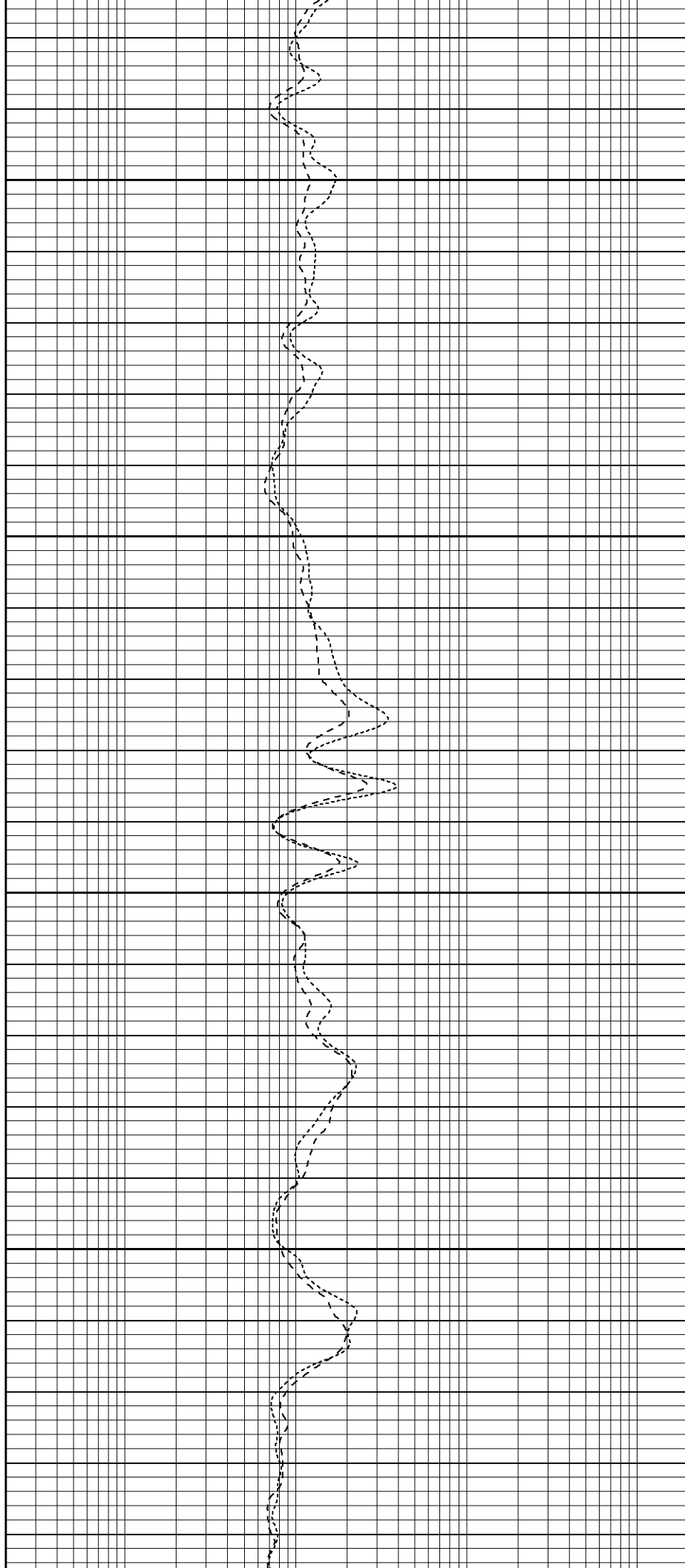


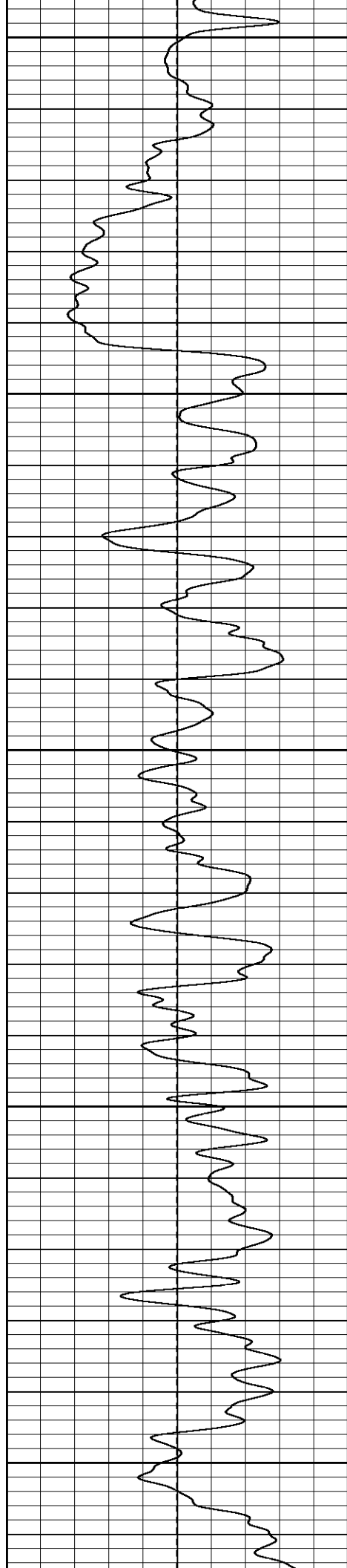
400

450

500

550





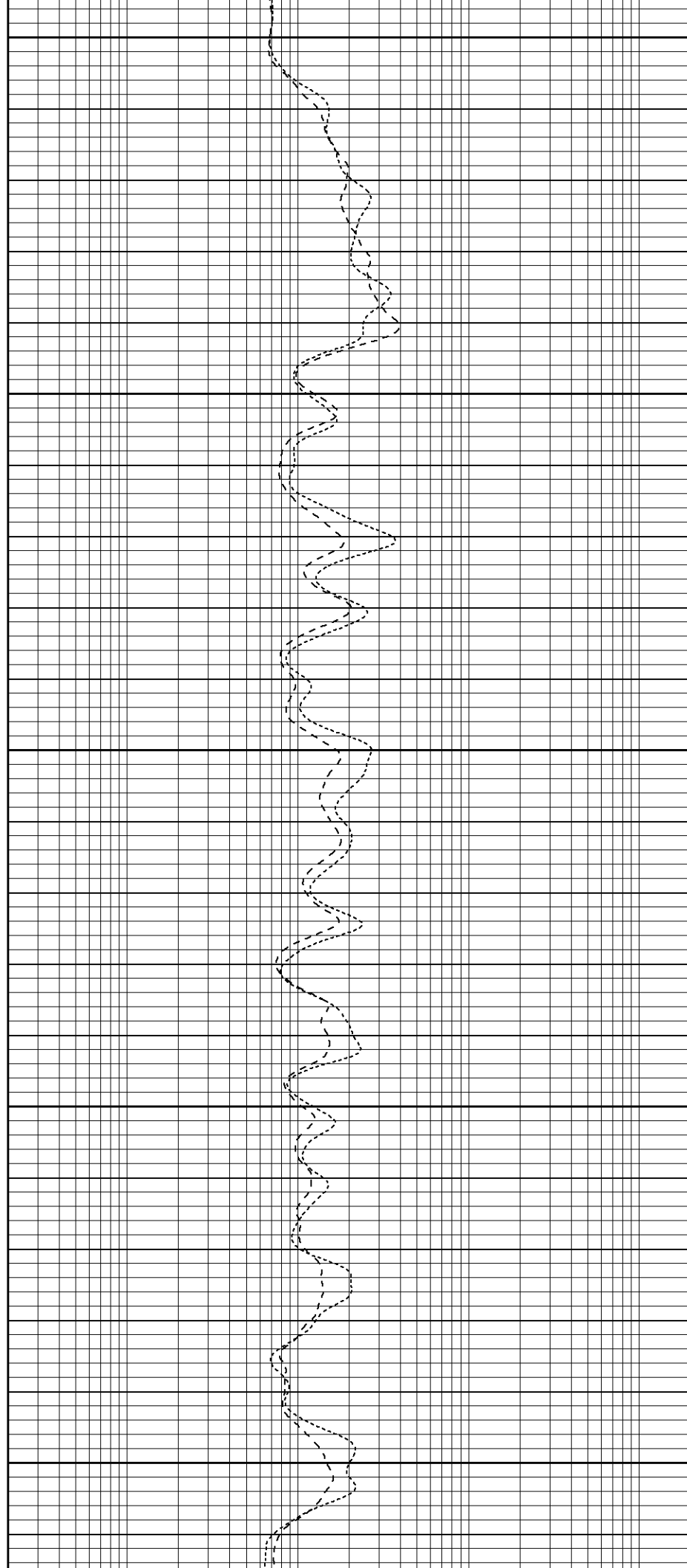
600

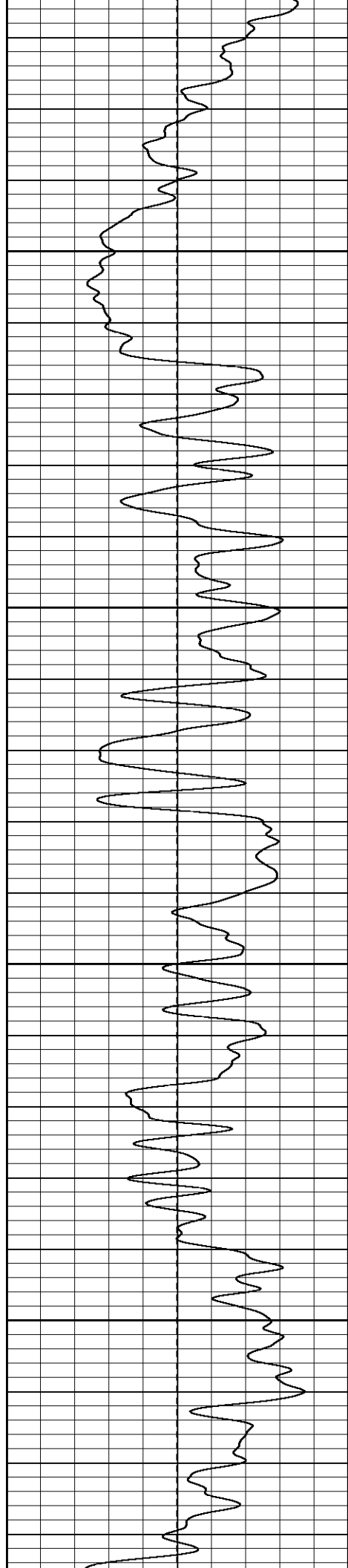
650

700

750

800



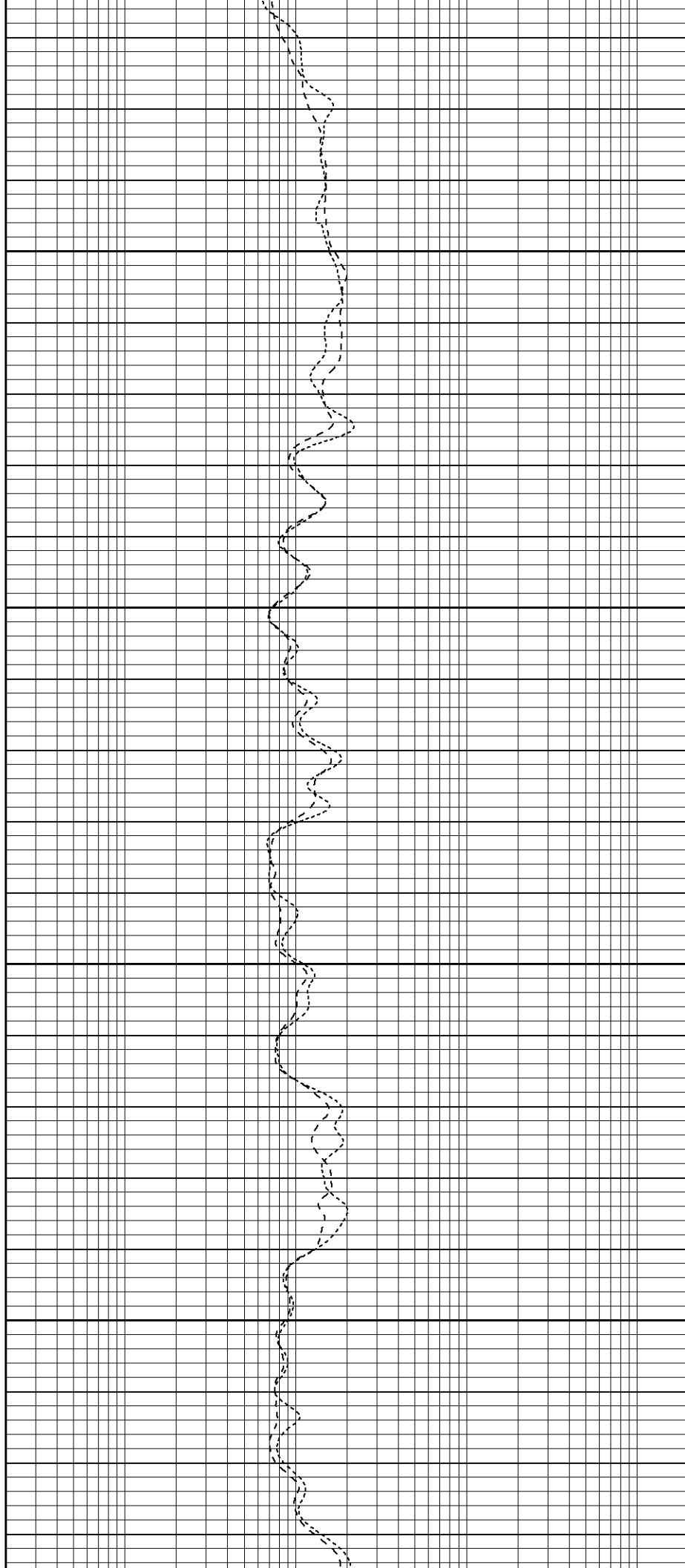


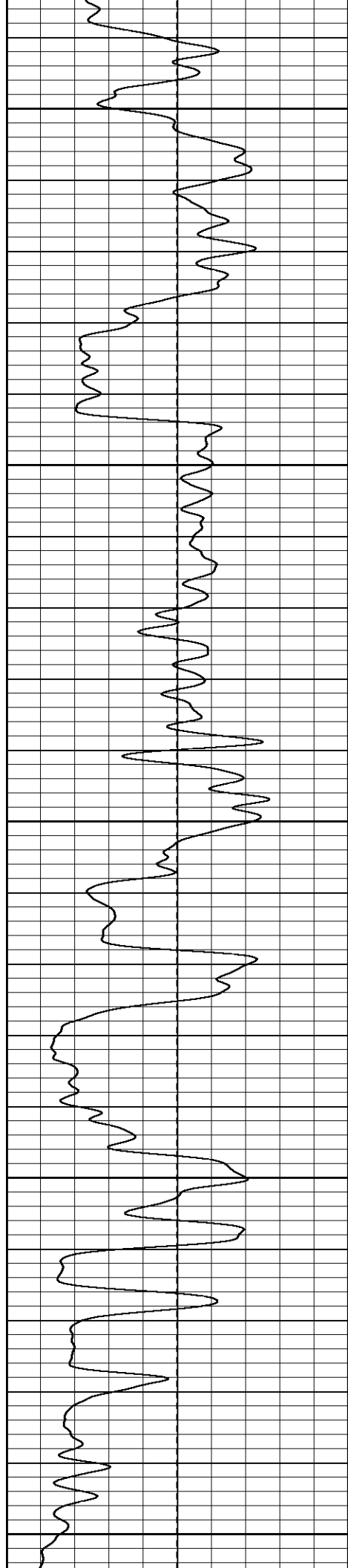
850

900

950

1000





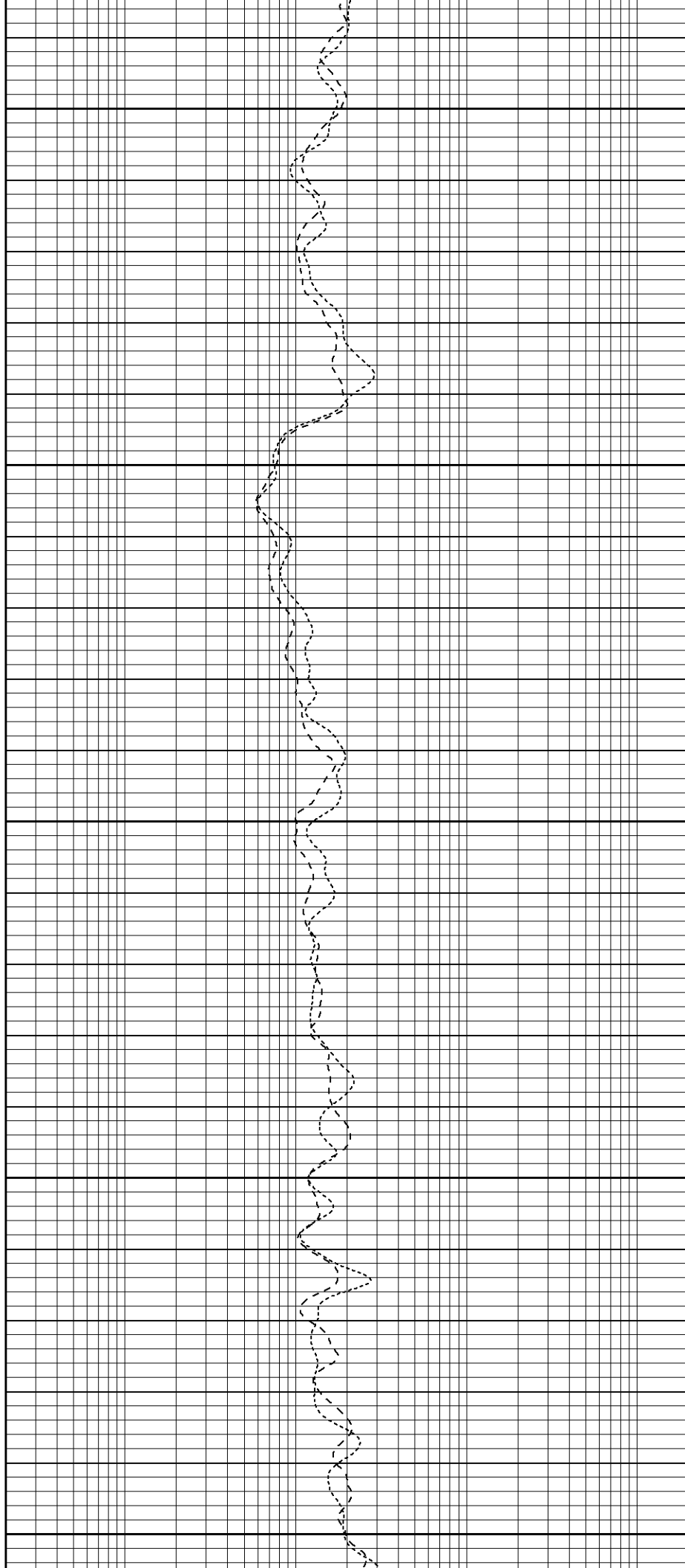
1050

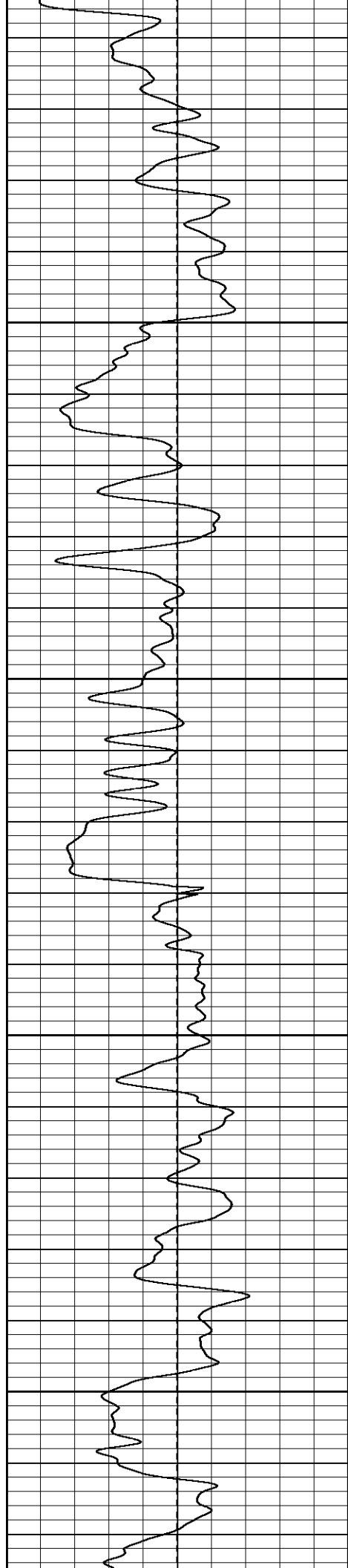
1100

1150

1200

1250



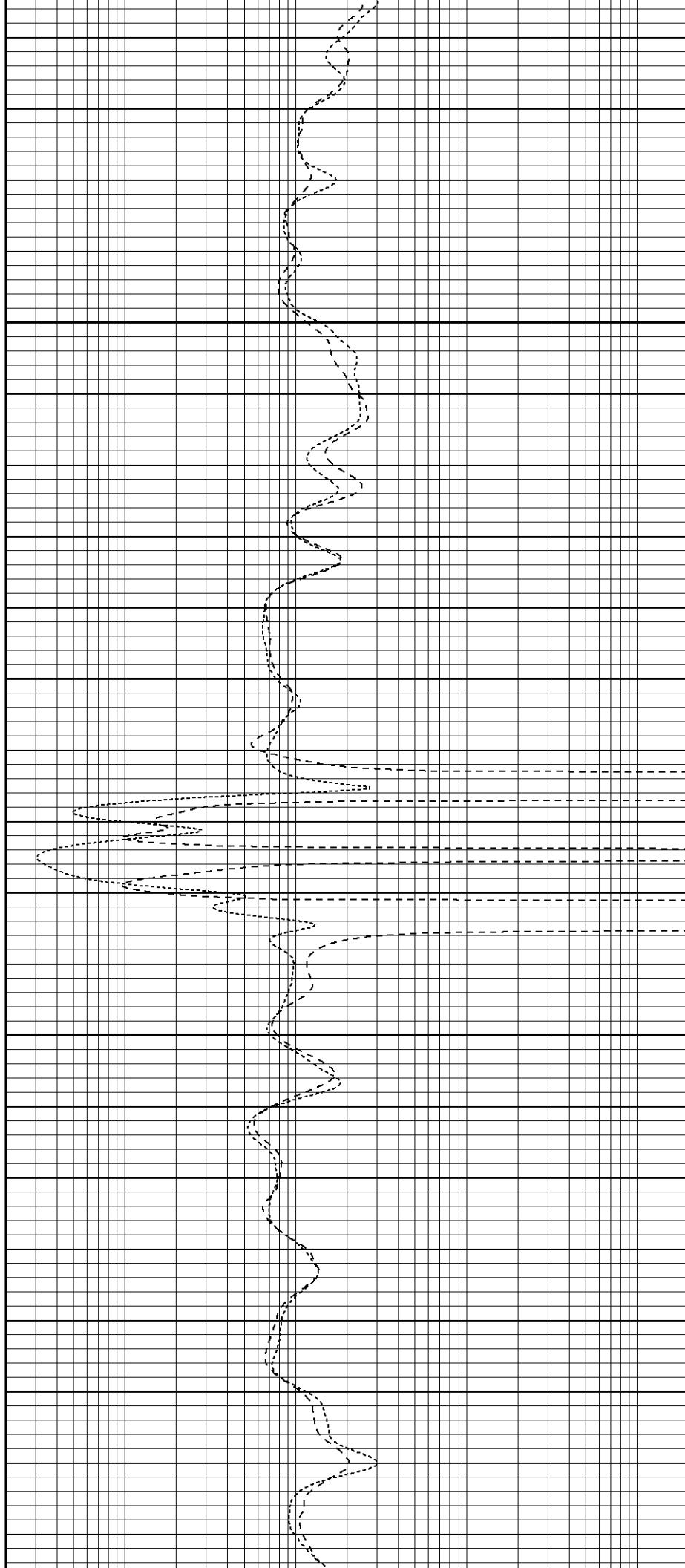


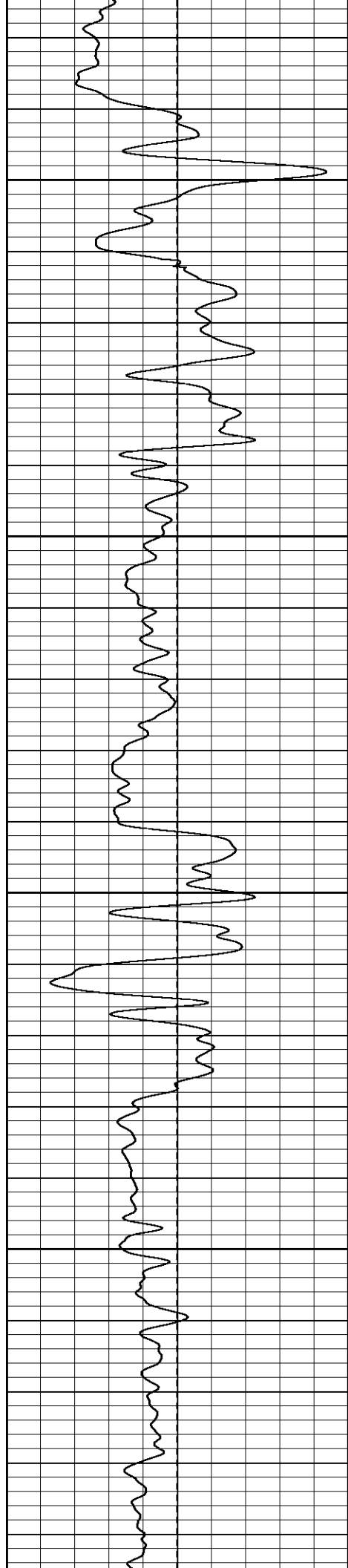
1300

1350

1400

1450



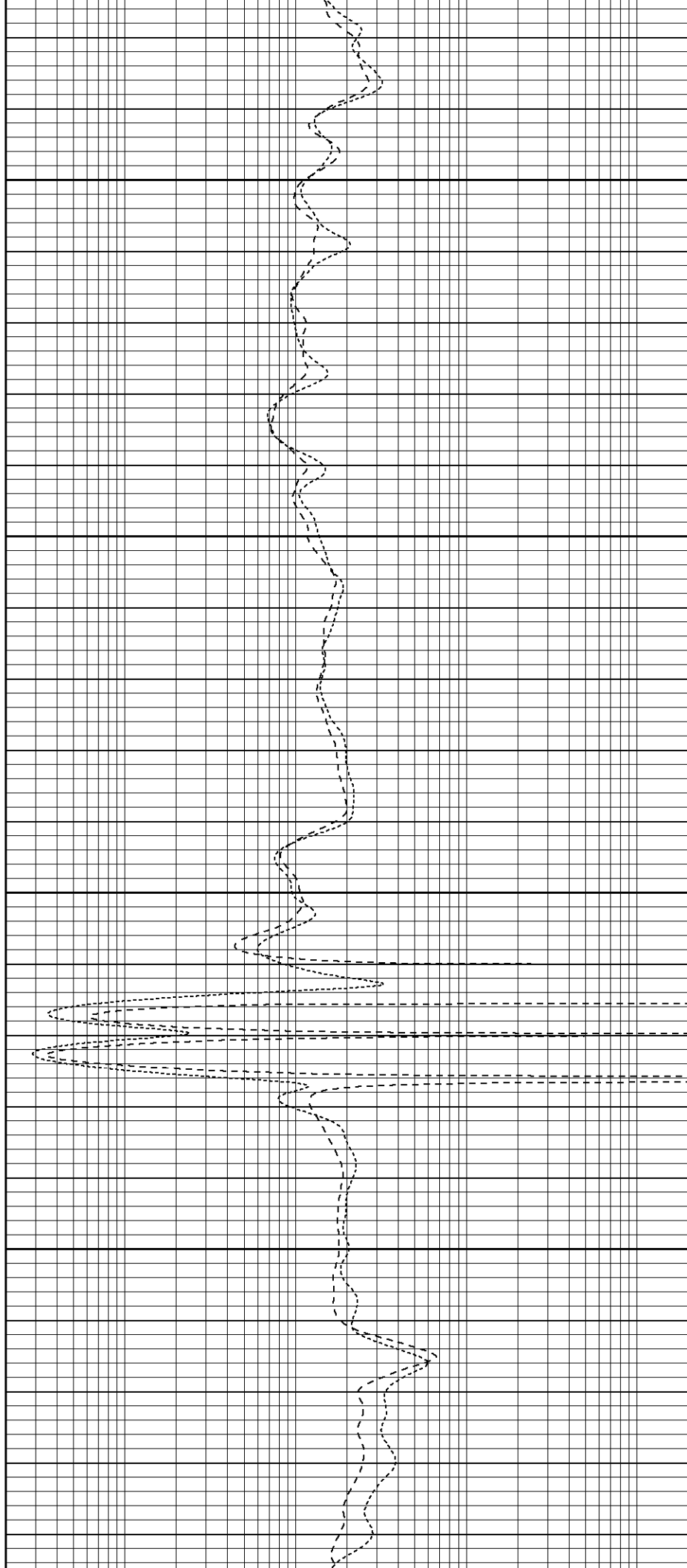


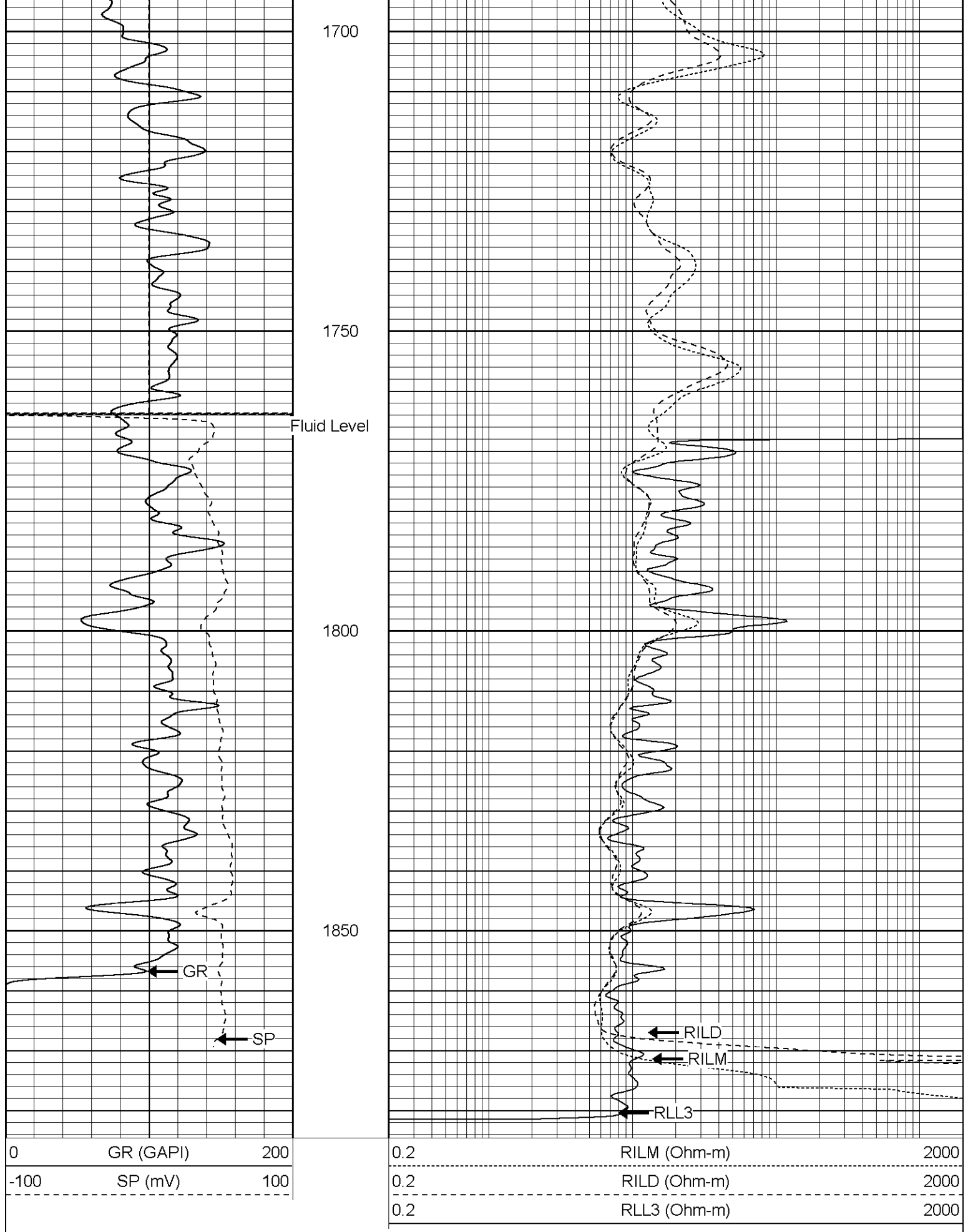
1500

1550

1600

1650

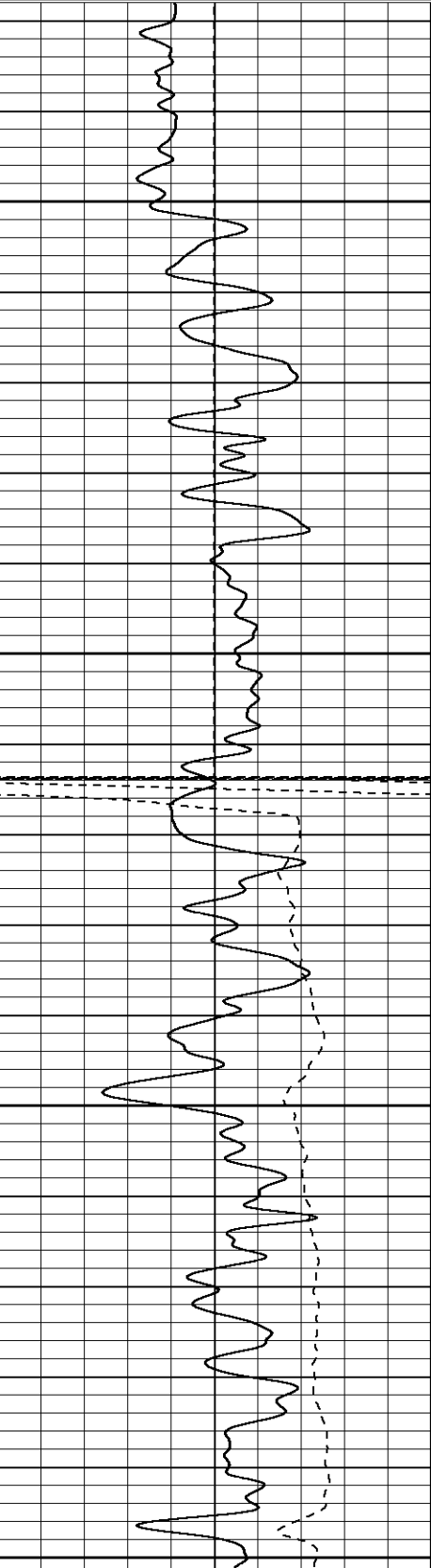




Database File: xtoge3407.db
Dataset Pathname: pass1.1
Presentation Format: dil
Dataset Creation: Fri Jul 07 13:28:23 2006 by Calc Warrior 7.0 STD Ope
Charted by: Depth in Feet scaled 1:240

0	GR (GAPI)	200
-100	SP (mV)	100

0.2	RILM (Ohm-m)	2000
0.2	RILD (Ohm-m)	2000
0.2	RLL3 (Ohm-m)	2000

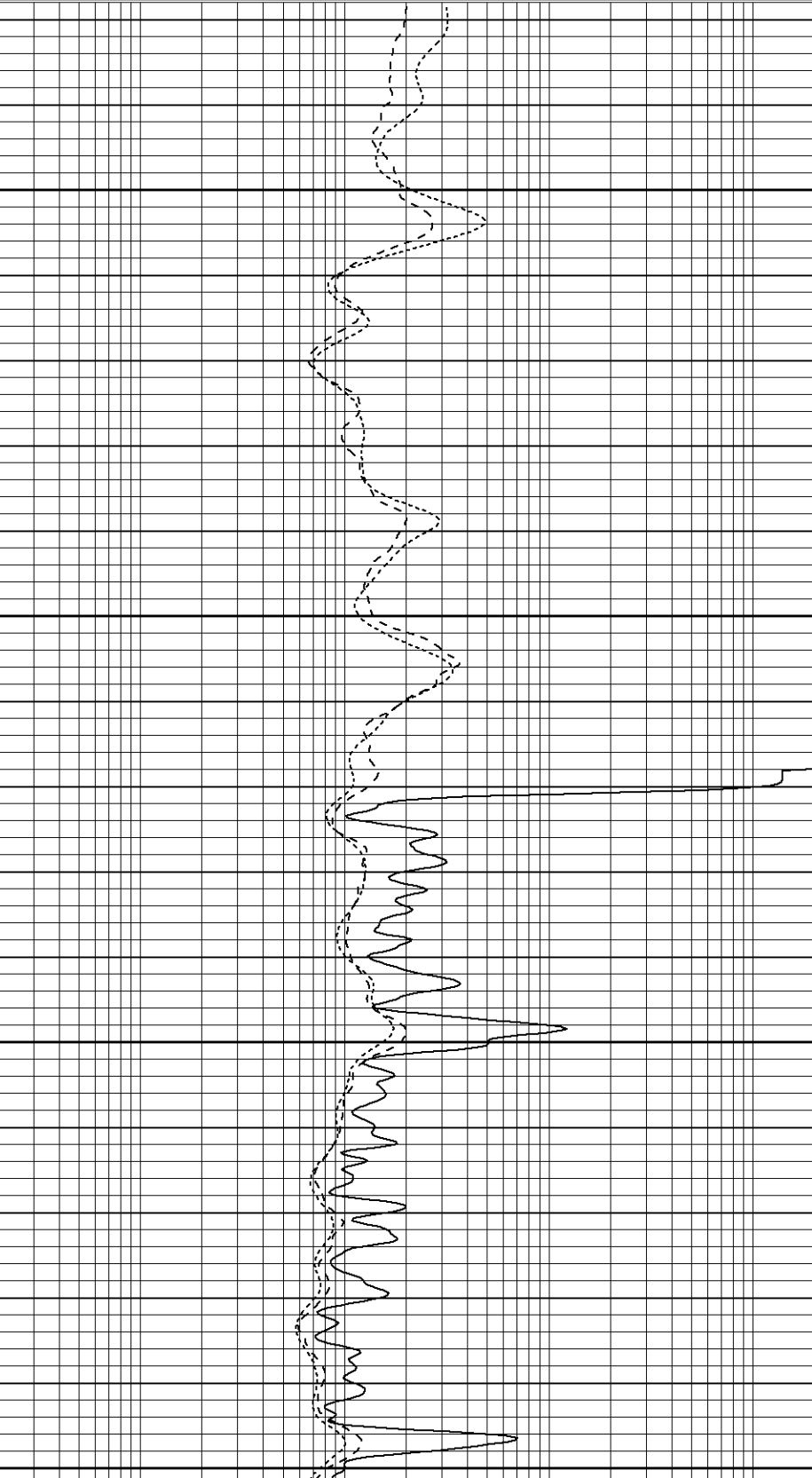


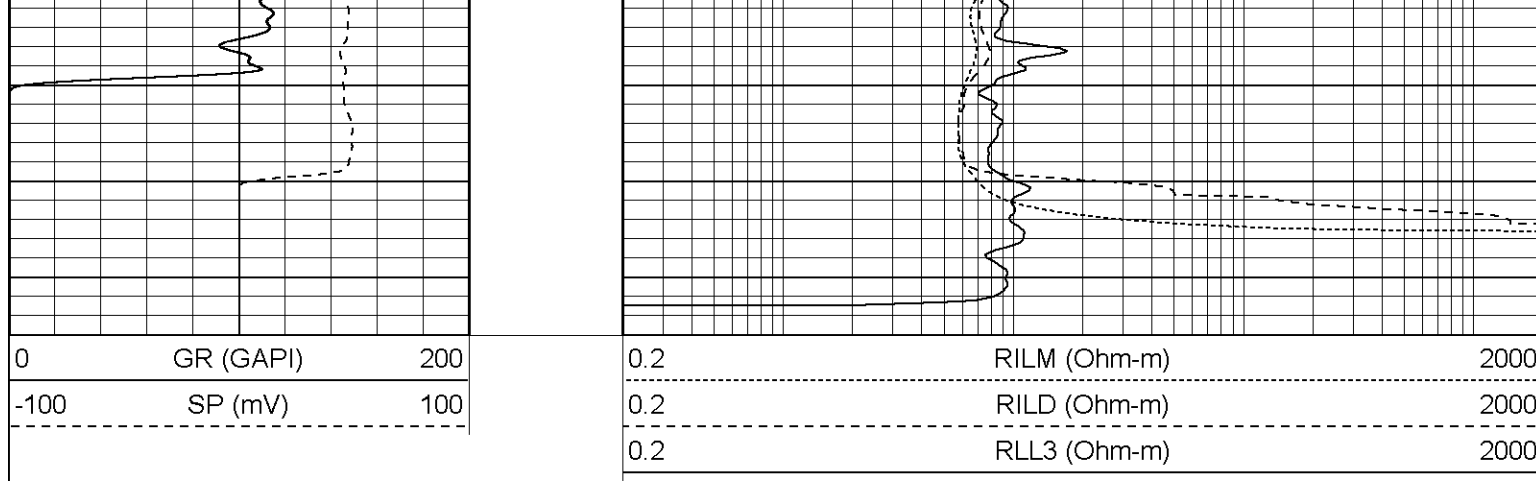
1700

1750

1800

1850





Dual Induction Calibration Report

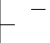
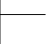
Serial-Model:	20017-P
Surface Cal Performed:	Fri Jul 07 08:54:45 2006
Downhole Cal Performed:	Fri Jul 07 11:49:00 2006

Surface Calibration								
Loop:	Readings				References		Results	
	Air	Loop			Air	Loop	m	b
Deep	0.007	0.669	V		0.000	550.000 mmho-m	830.901	-5.868
Medium	0.007	0.769	V		0.000	600.000 mmho-m	787.326	-5.252
Internal:	Zero	Cal			Zero	Cal	m	b
Deep	0.008	0.668	V		0.000	500.000 mmho-m	756.718	-5.676
Medium	0.007	0.769	V		0.000	625.000 mmho-m	820.408	-6.089

Downhole Calibration								
Internal:	Readings				References		Results	
	Zero	Cal			Zero	Cal	m	b
Deep	-0.682	468.483	mmho-m		0.332	499.438 mmho-m	1.064	1.058
Medium	0.123	545.639	mmho-m		0.542	550.357 mmho-m	1.008	0.418
Shallow	0.065	5.551	V		10.000	1000.000 Ohm-m	0.000	2000.000

Gamma Ray Calibration Report

Serial Number:	2001	
Tool Model:	OH	
Performed:	Tue Jul 04 08:55:06 2006	
Calibrator Value:	1.0	GAPI
Background Reading:	0.0	cps
Calibrator Reading:	1.0	cps
Sensitivity:	0.1800	GAPI/cps

Sensor	Offset (ft)	Schematic	Description	Len (ft)	OD (in)	Wt (lb)
CHD	28.88		None	0.75	1.50	5.00
GR	26.63		GR-OH (2001) PROBE	3.50	3.25	40.00

