

CEMENT BOND
GAMMA RAY
LOG

Company	Pioneer Natural Resources		
Well	Lorencito 7-19-34-66		
Field	Purgatoire River		
County	Las Animas	State	CO

Location: AP| #: 05 071 09036 00

1704' FNL & 1448' FEL

SEC 19 TWP 34S RGE 66W

Permanent Datum	Ground Level	Elevation	7165
Log Measured From	Kelly Bushing	4' Above G.L.	
Drilling Measured From	Kelly Bushing		

Elevation	
K.B. 7169'	
D.F. -----	
G.L. 7165'	

1-12-0

One

750'

598

092

71011

116
 Motor

III

17E

121	84'
-----	-----

ole

15P

875

ନିର୍ଦ୍ଦେଶ

Ray

1

[illegible]

0

1

11

1

1

1

11

<<< Fold Here >>>

All interpretations are opinions based on inferences from electrical or other measurements and we cannot and do not guarantee the accuracy or correctness of any interpretation, and we shall not, except in the case of gross or willful negligence on our part, be liable or responsible for any loss, costs, damages, or expenses incurred or sustained by anyone resulting from any interpretation made by any of our officers, agents or employees. These interpretations are also subject to our general terms and conditions set out in our current Price Schedule.

Comments

Up Lorencito Canyon, From Lorencito Compressor Station go 1.7 Miles and
Turn Right on New Rd., 1st Drive thru Location

2.25 Deg of Deviation

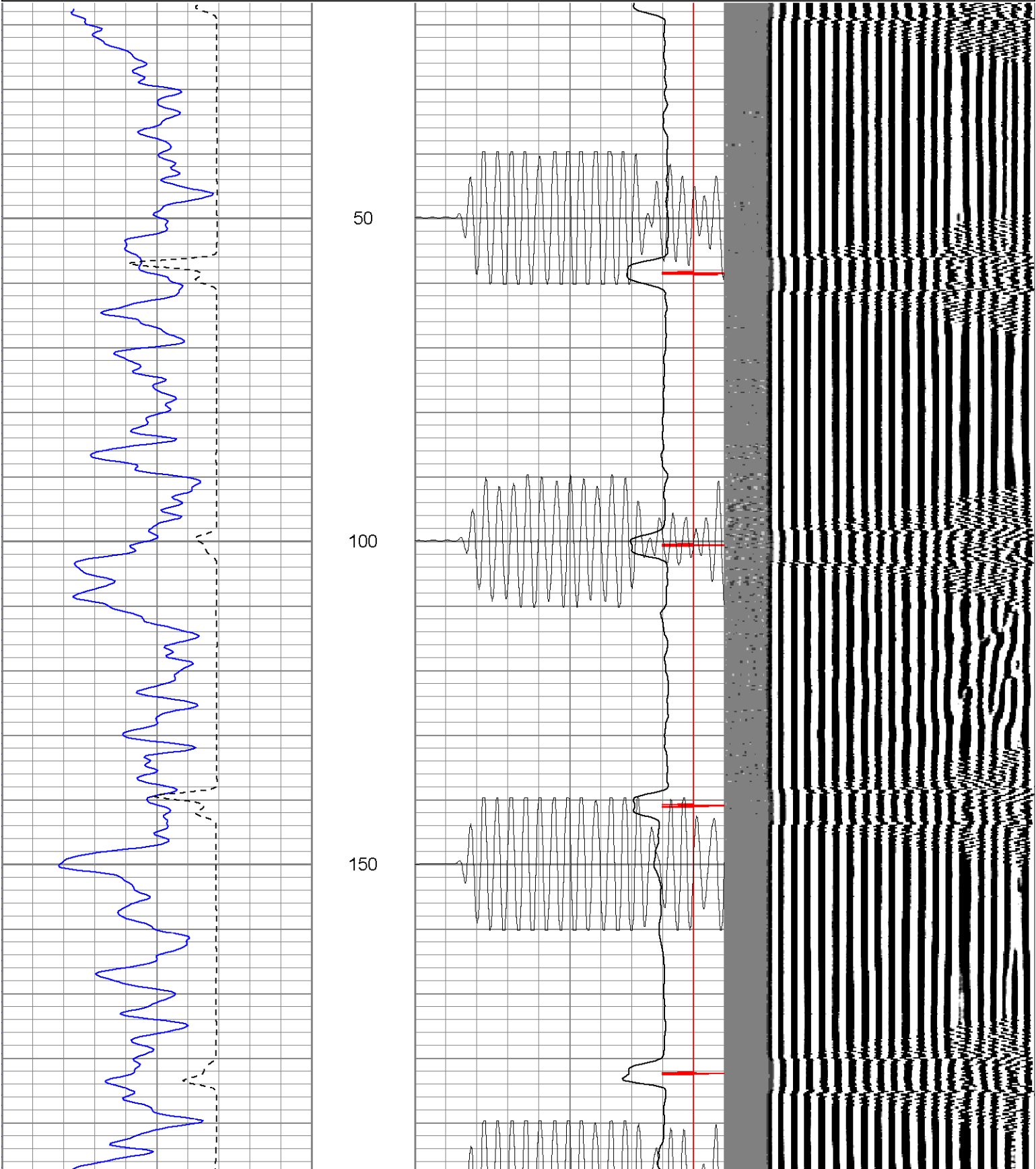


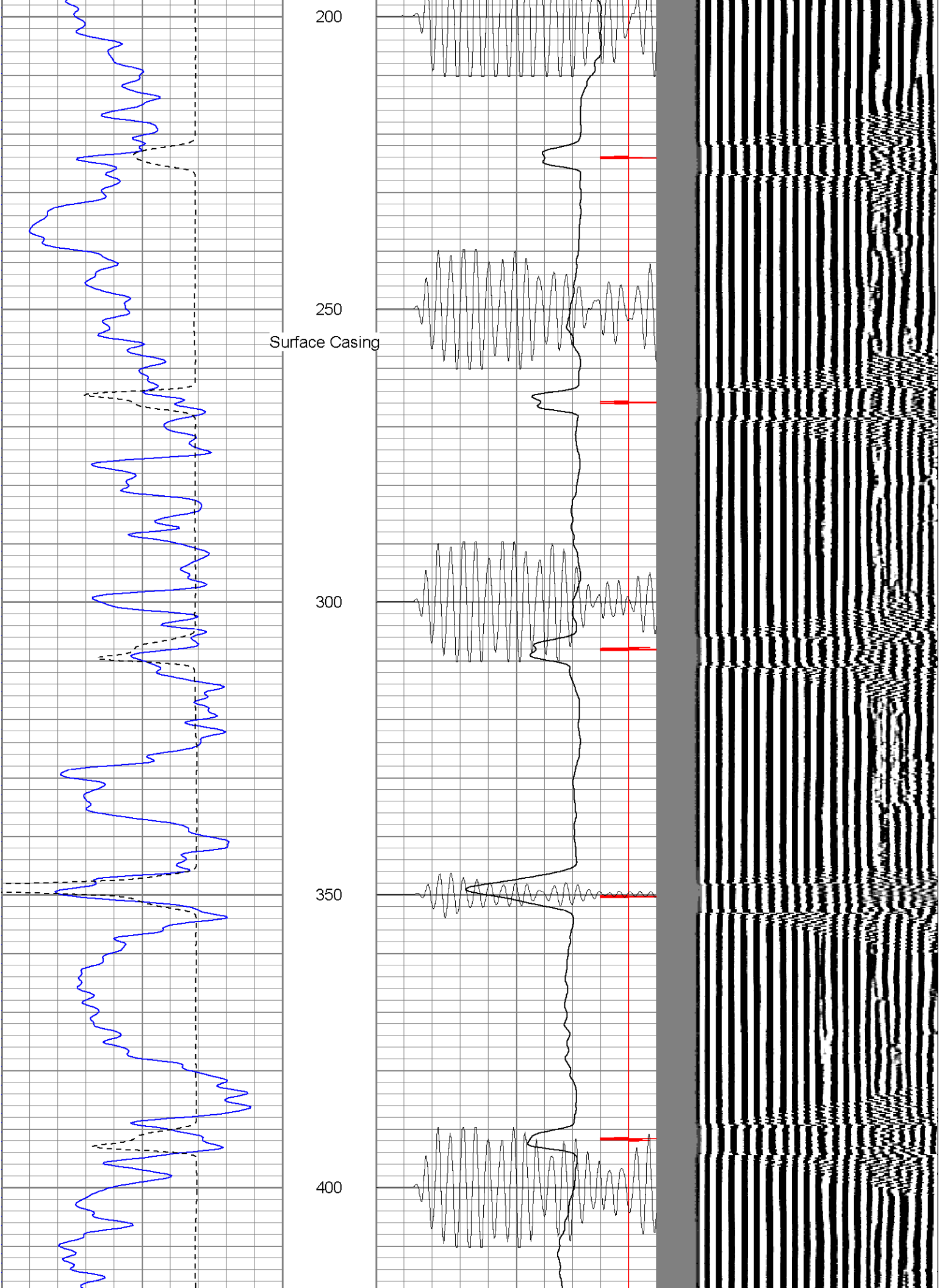
Black Lick, Pa.
Mercer, Pa.
Wooster, Oh.
Cleveland, Ok.
Trinidad, Co.

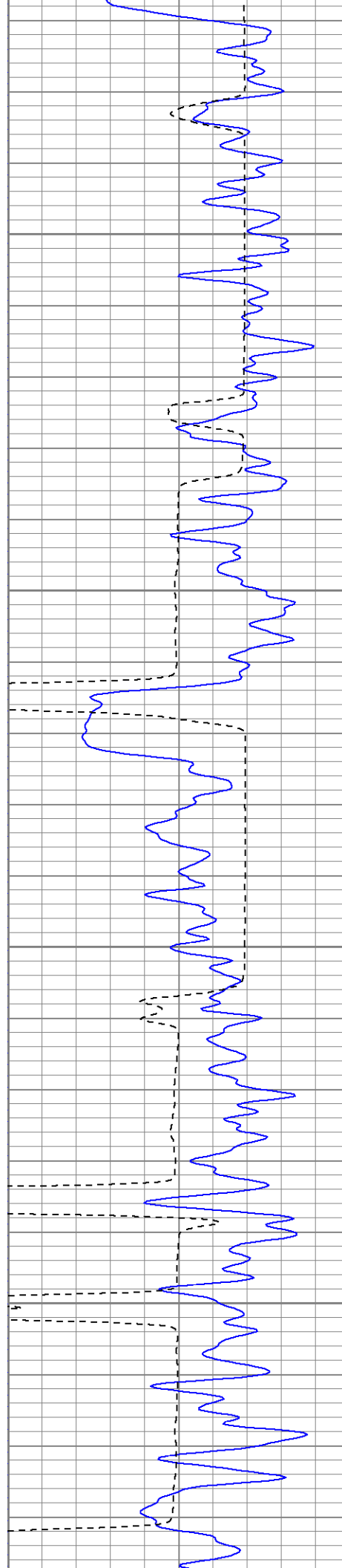
Main Pass

Database File: lorencito71911207b.db
Dataset Pathname: pass2
Presentation Format: cblrt
Dataset Creation: Fri Jan 12 12:37:49 2007 by Log Open-Cased 060407
Charted by: Depth in Feet scaled 1:240

0	GR (GAPI)	200	0	AMP3 (mV)	100	200	Variable Density	1200
200	GR (GAPI)	400	18	CCL	-2			
400	TT3 (usec)	200	200	CBL5	1200			







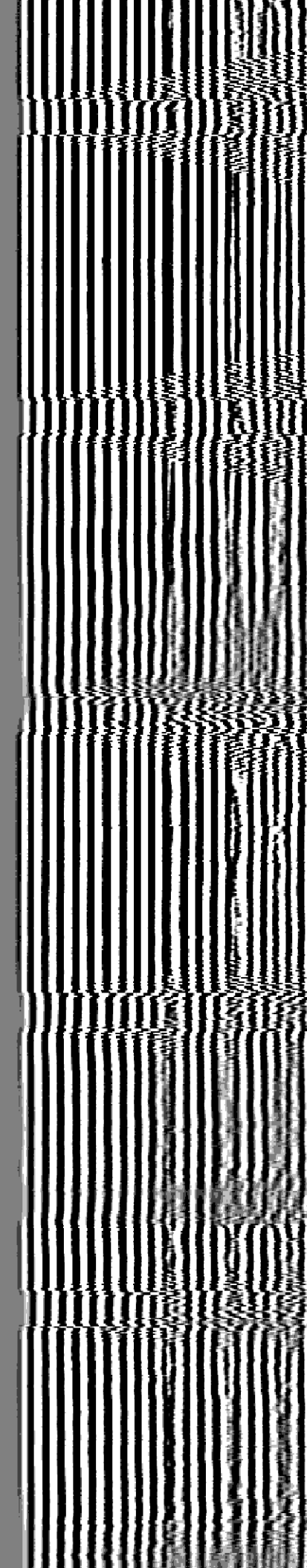
450

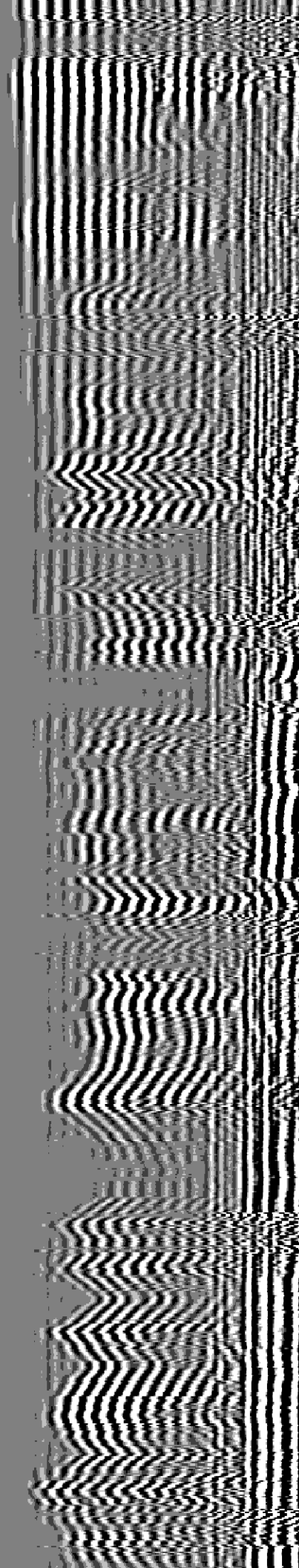
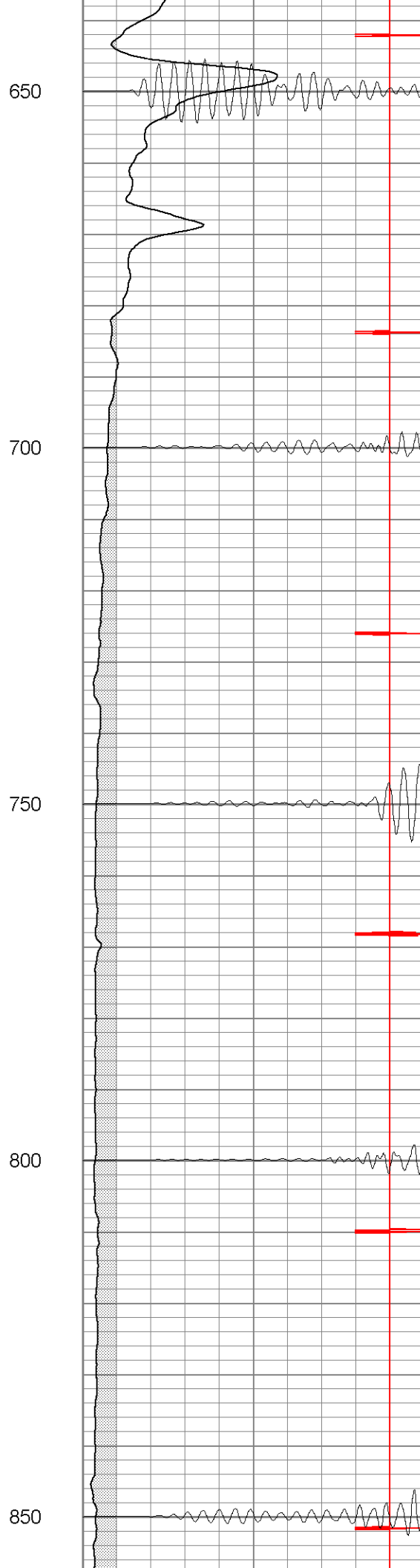
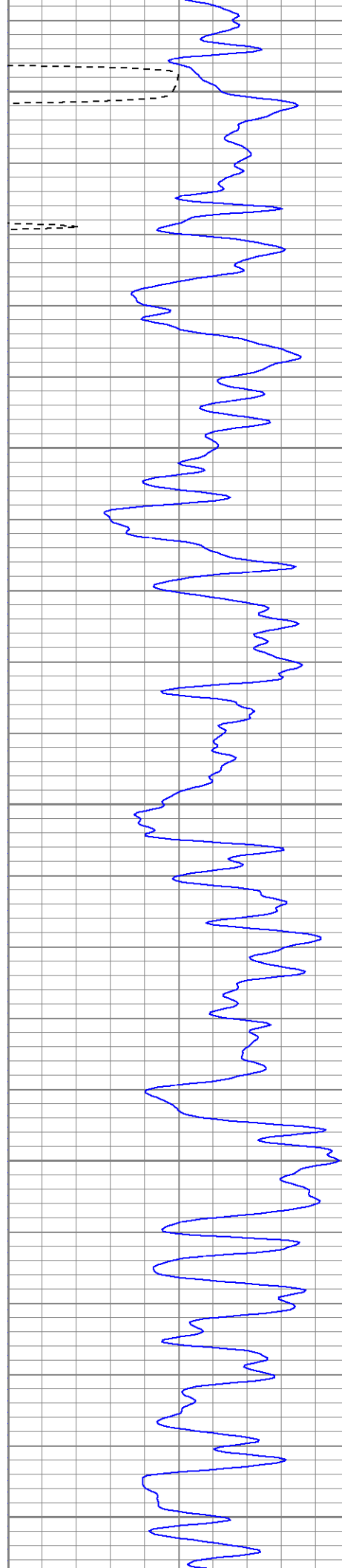
Estimated Cement Top

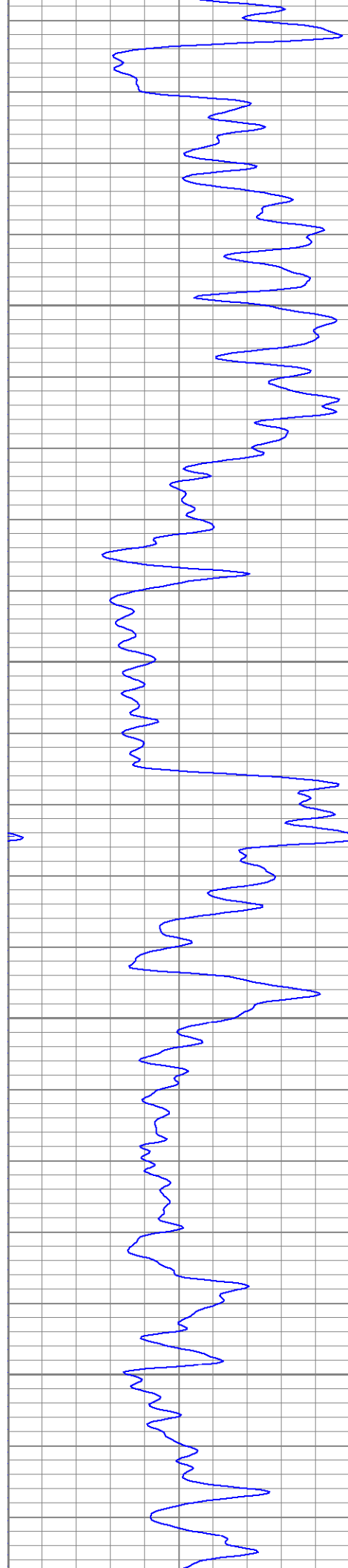
500

550

600





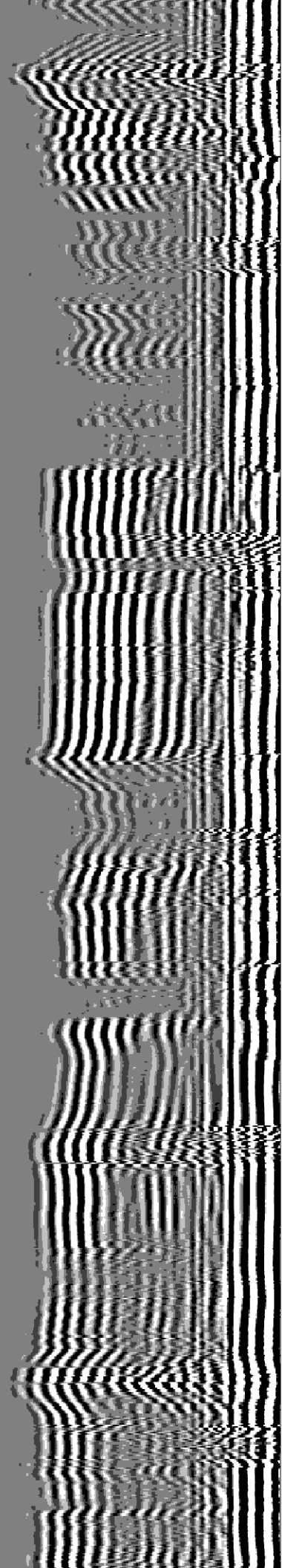


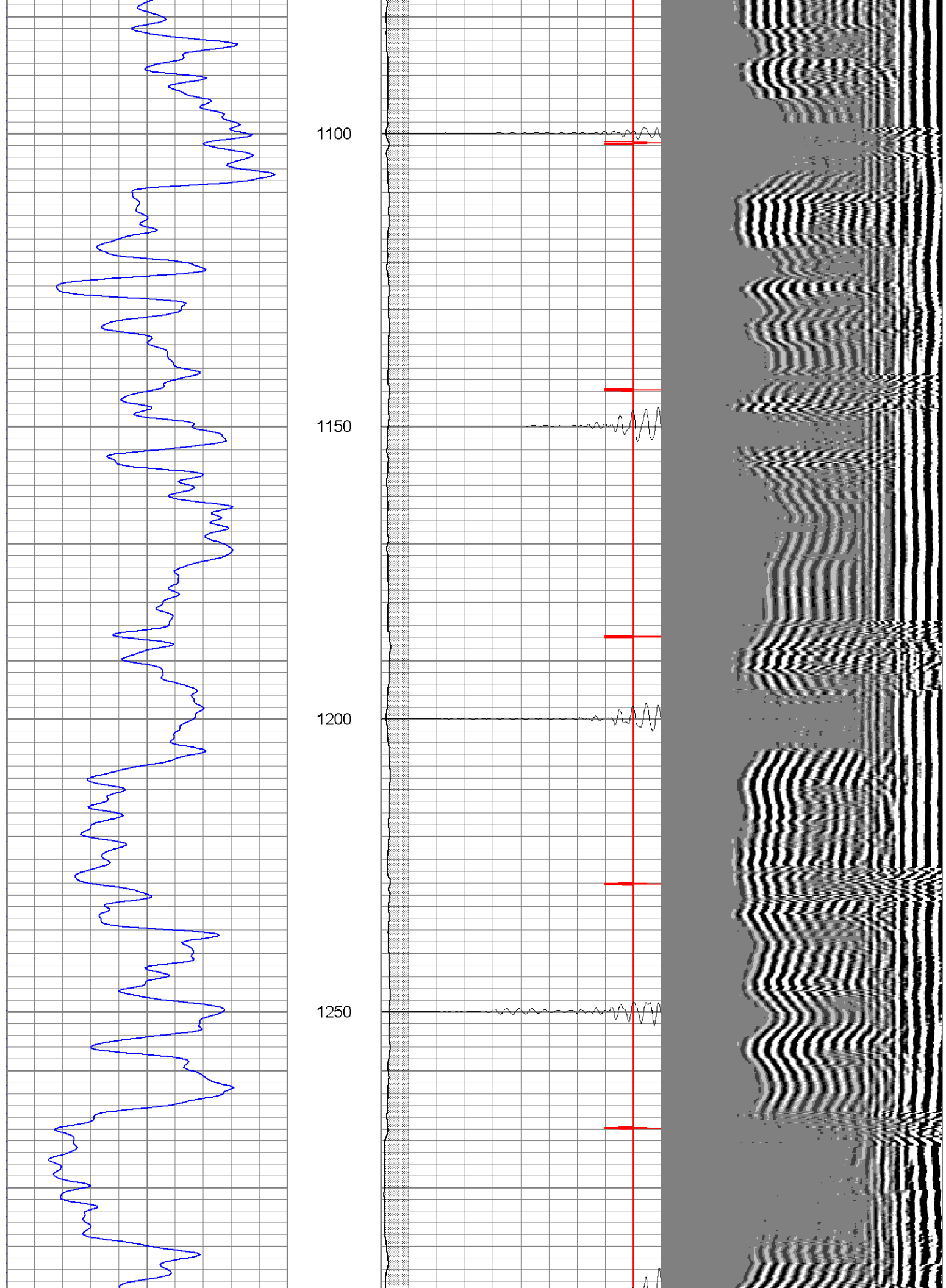
900

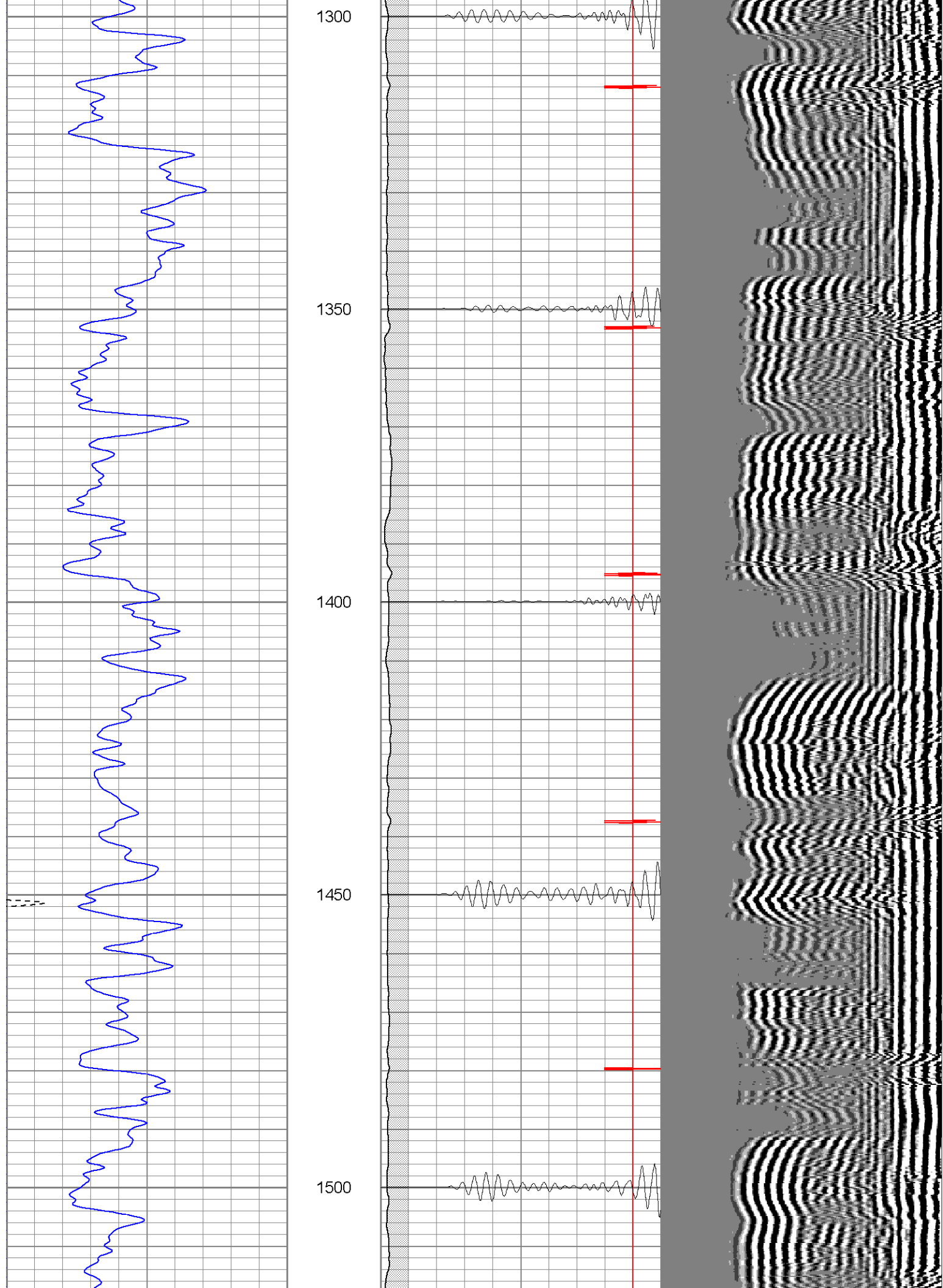
950

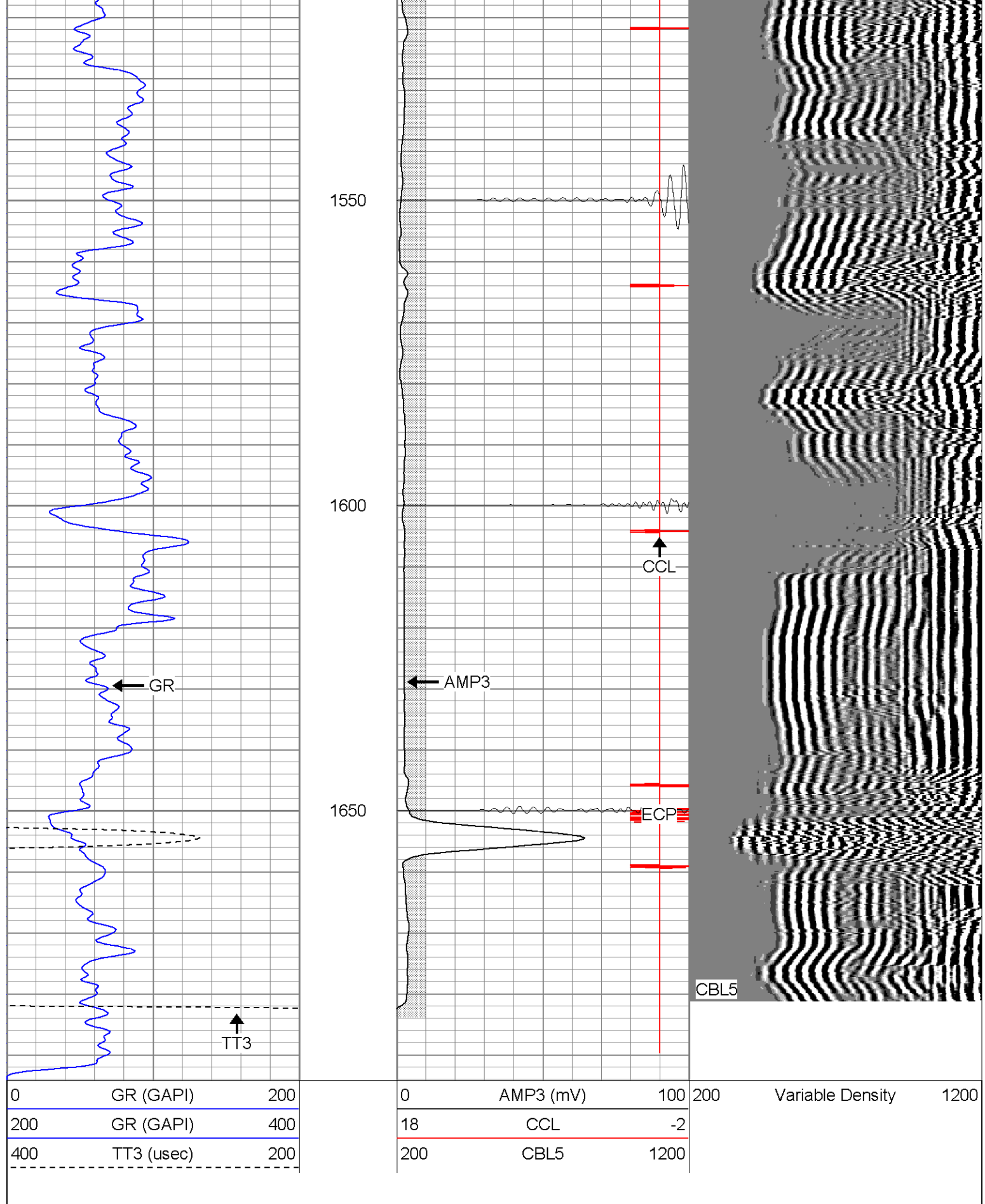
1000

1050



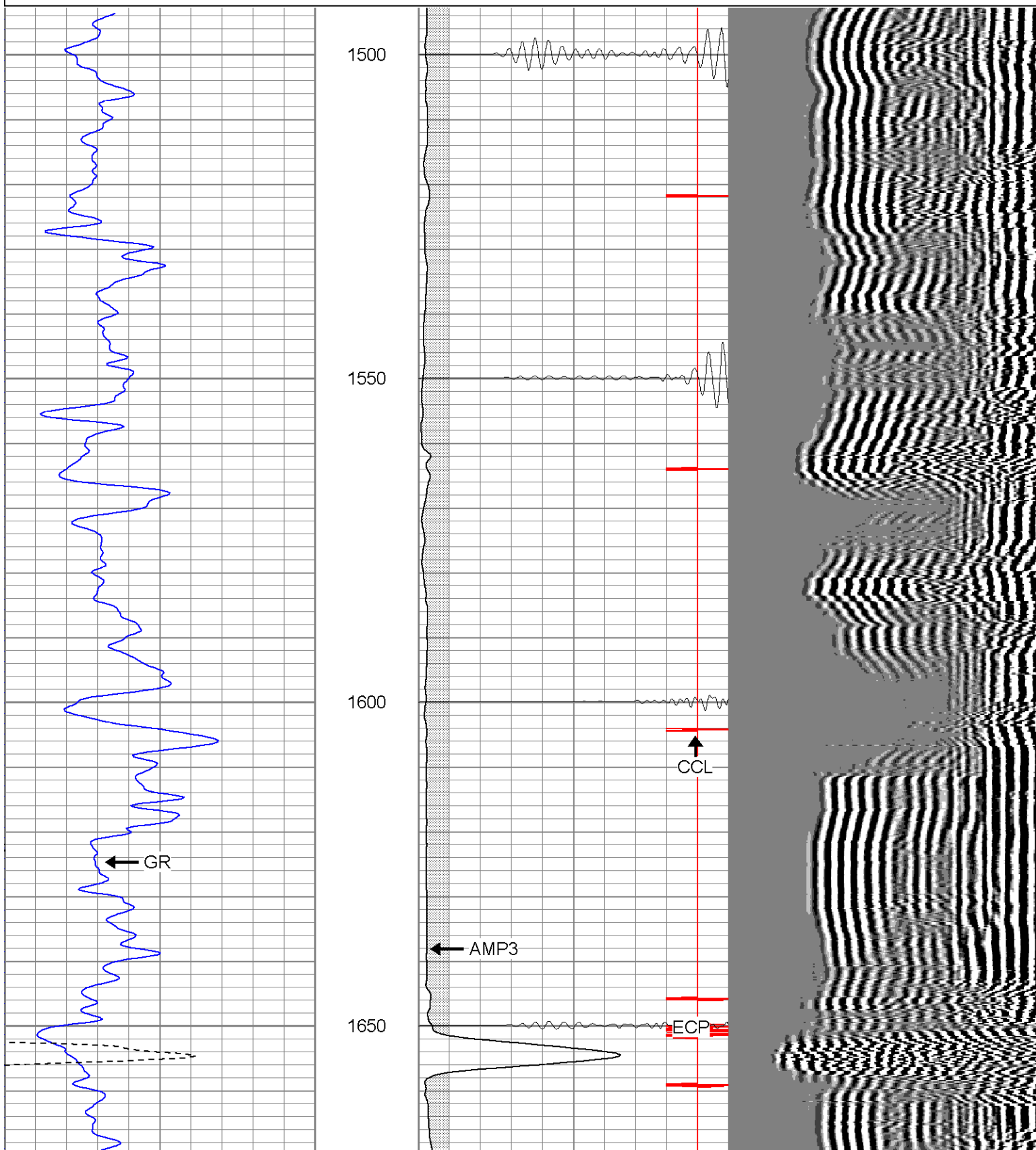


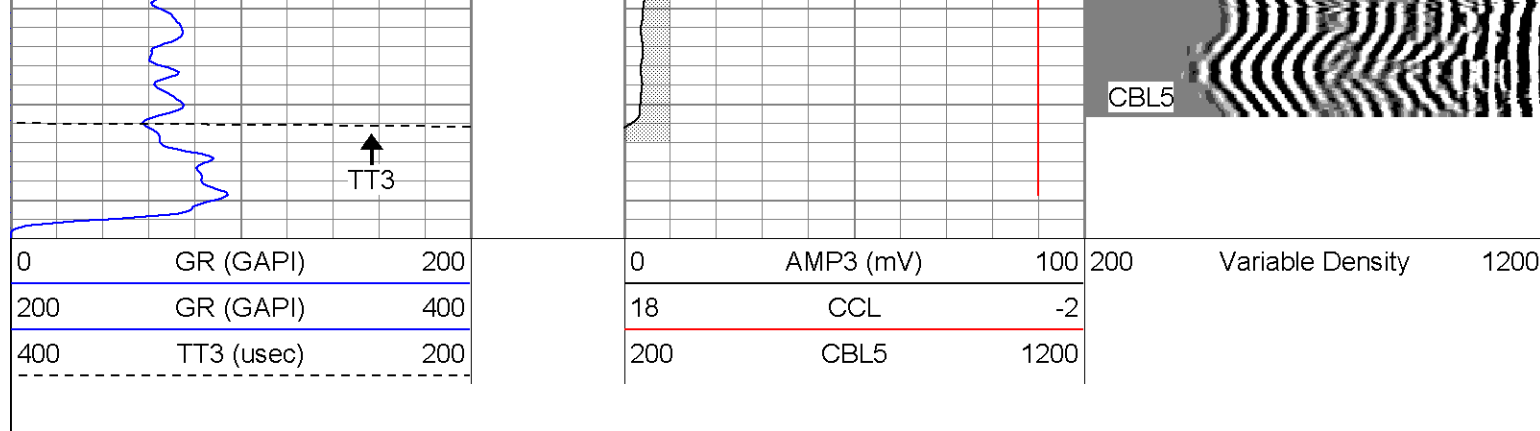




Database File: lorencito71911207b.db
Dataset Pathname: pass1
Presentation Format: cblrt
Dataset Creation: Fri Jan 12 12:29:33 2007 by Log Open-Cased 060407
Charted by: Depth in Feet scaled 1:240

0	GR (GAPI)	200	0	AMP3 (mV)	100	200	Variable Density	1200
200	GR (GAPI)	400	18	CCL	-2			
400	TT3 (usec)	200	200	CBL5	1200			





Calibration Report			
Database File:	lorencito71911207b.db		
Dataset Pathname:	pass1		
Dataset Creation:	Fri Jan 12 12:29:33 2007 by Log Open-Cased 060407		
Gamma Ray Calibration Report			
Serial Number:	Titan2.75		
Tool Model:	2.75		
Performed:	Fri Jan 12 08:54:24 2007		
Calibrator Value:	200.0	GAPI	
Background Reading:	40.0	cps	
Calibrator Reading:	240.0	cps	
Sensitivity:	1.1000	GAPI/cps	
Cement Bond Log Calibration Report			
Serial Number:	Titan4		
Tool Model:	4		
Performed:	Fri Jan 12 12:13:15 2007		
Depth:	1054.62	ft	
Casing Diameter:	5.5	in	
	3' Spacing	5' Spacing	
Signal Zero:	0	1	mV
Calibrated Amplitude:	85	85	mV
Reading at Signal Zero:	0.00161133	0.0143555	V
Reading in Free Pipe:	1.23	1.65081	V
Gain:	69.1963	51.3306	
Offset:	-1	0.263125	

Sensor	Offset (ft)	Schematic	Description	Len (ft)	OD (in)	Wt (lb)
CHD	20.38		CHD-None (0)	0.75	1.50	5.00
CENT	19.63		CENT-X (2)	3.00	1.69	25.00
WVF5	12.82		CBL-4 (Titan4)	8.15	2.25	110.00
WVF3	11.82					
CENT	8.48					

