

Patterson

DUAL
INDUCTION
LOG

Company XTO Energy, Inc.		Company XTO Energy, Inc.	
Well Golden Eagle 20-11		Well Golden Eagle 20-11	
Field Purgatoire River		Field Purgatoire River	
County Las Animas		County Las Animas	
State CO		State CO	
Location: API # : 05 071 08800 00		Other Services CDL NEUTRON	
SEC 20 TWP 33S RGE 67W		Elevation	
Permanent Datum	Ground Level	Elevation	7752'
Log Measured From	Ground Level		
Drilling Measured From	Ground Level		
Date 9-24-06			
Run Number	One		
Depth Driller	2500'		
Depth Logger	2494'		
Bottom Logged Interval	2492'		
Top Log Interval	Surface Casing		
Casing Driller	8 5/8" @ 1041'		
Casing Logger	1044'		
Bit Size	7 7/8"		
Type Fluid in Hole	Water		
Density / Viscosity	///		
pH / Fluid Loss	///		
Source of Sample	///		
Rm @ Meas. Temp	///		
Rmf @ Meas. Temp	///		
Rmc @ Meas. Temp	///		
Source of Rmf / Rmc	///		
Rm @ BHT	///		
Time Circulation Stopped	8:00 A.M.		
Time Logger on Bottom	10:00 A.M.		
Maximum Recorded Temperature	112 DEG F		
Equipment Number	T720		
Location	Trinidad		
Recorded By	M. Norton		
Witnessed By	Mr. Don Johnson		

<<< Fold Here >>>

All interpretations are opinions based on inferences from electrical or other measurements and we cannot and do not guarantee the accuracy or correctness of any interpretation, and we shall not, except in the case of gross or willful negligence on our part, be liable or responsible for any loss, costs, damages, or expenses incurred or sustained by anyone resulting from any interpretation made by any of our officers, agents or employees. These interpretations are also subject to our general terms and conditions set out in our current Price Schedule.

Comments

Well Directions:
Four miles past Weston right (next to Missy's house), to T, stay right,
up hill to Golden Eagle Compressor 1, stay right, at T stay right, at Y stay left to location.

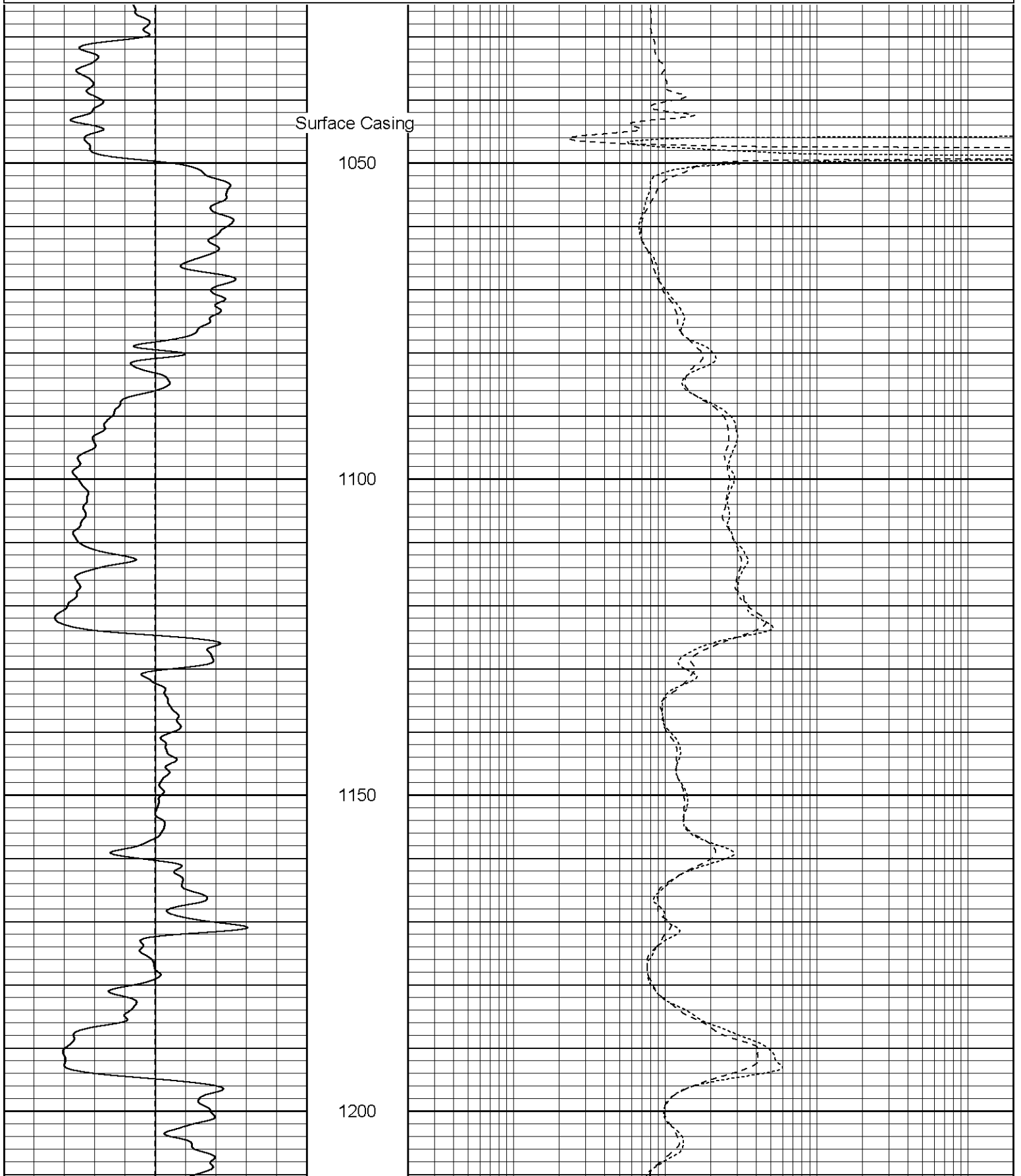
Patterson

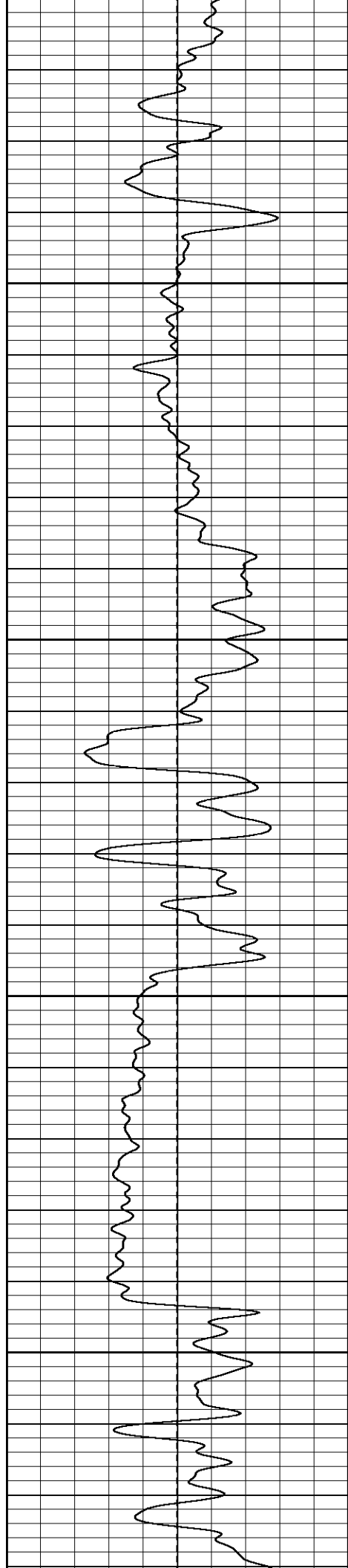
Main Pass

Database File: xtoge2011.db
Dataset Pathname: pass2.1
Presentation Format: dil
Dataset Creation: Sun Sep 24 12:06:03 2006 by Calc Warrior 7.0 STD Ope
Charted by: Depth in Feet scaled 1:240

0	GR (GAPI)	200
-100	SP (mV)	100

0.2	RILM (Ohm-m)	2000
0.2	RILD (Ohm-m)	2000
0.2	RLL3 (Ohm-m)	2000



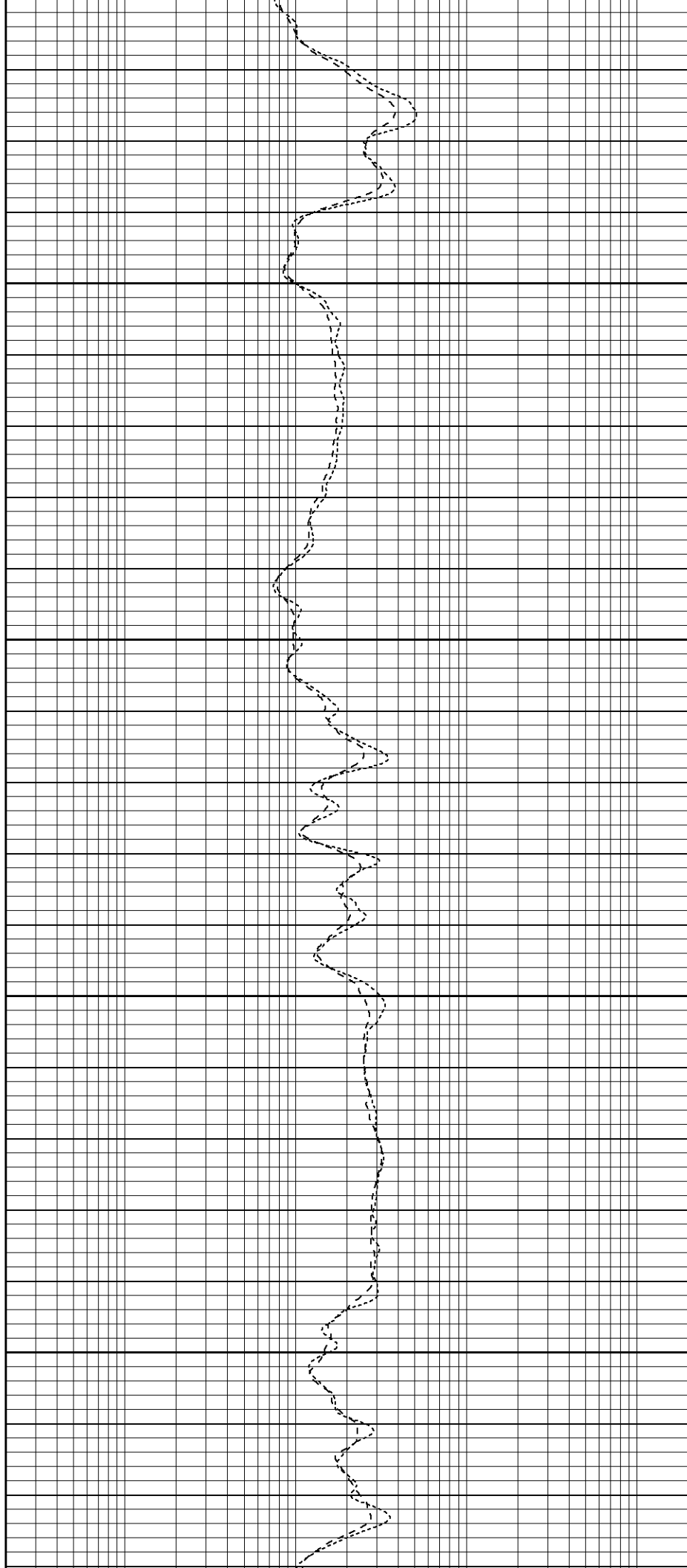


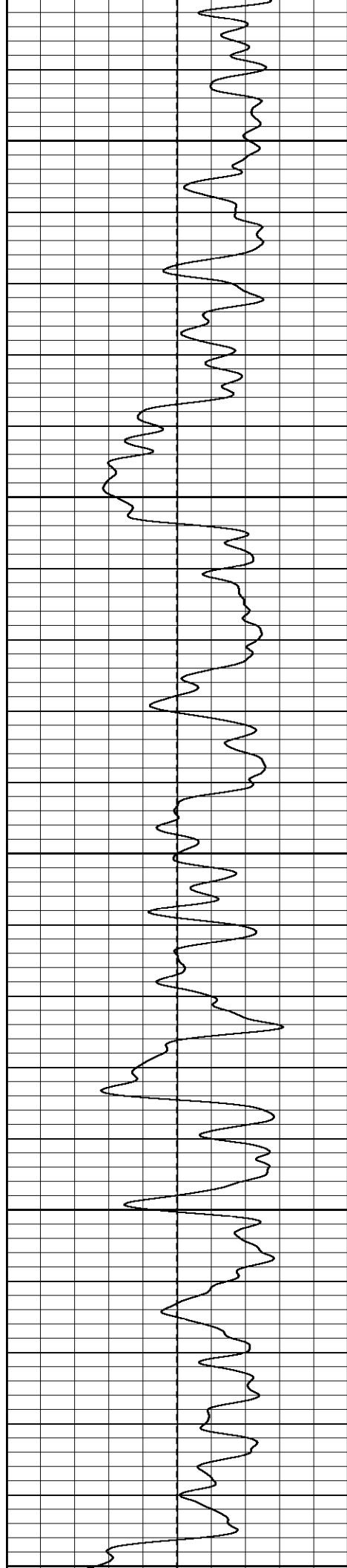
1250

1300

1350

1400





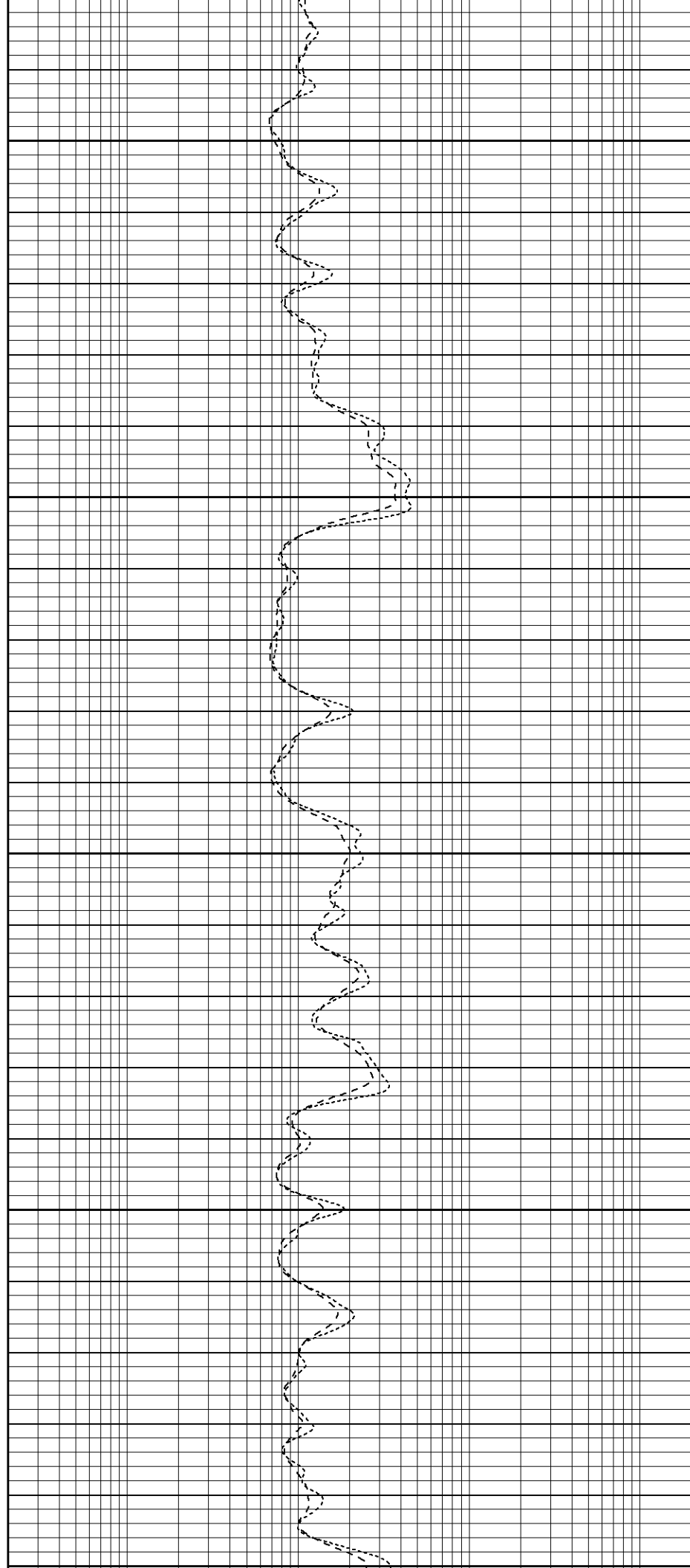
1450

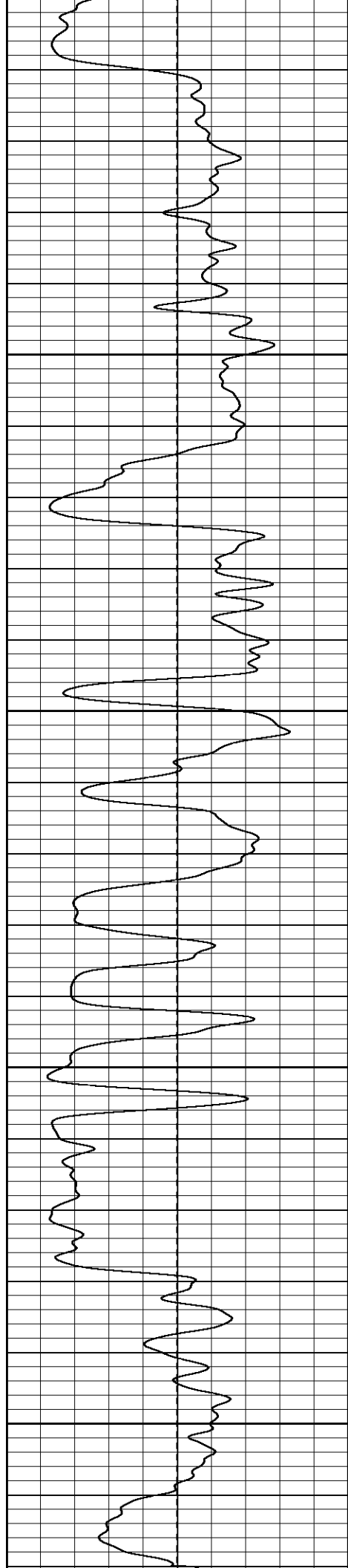
1500

1550

1600

1650





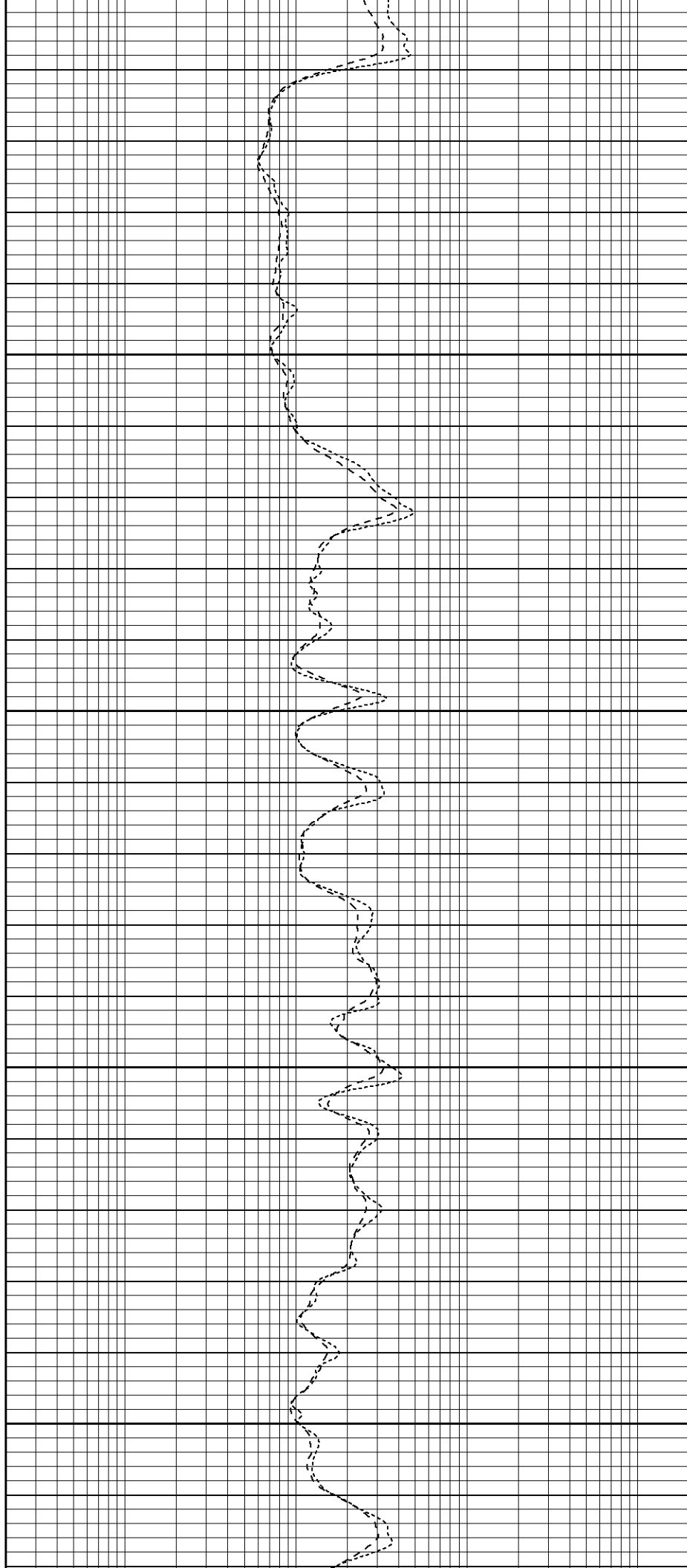
1650

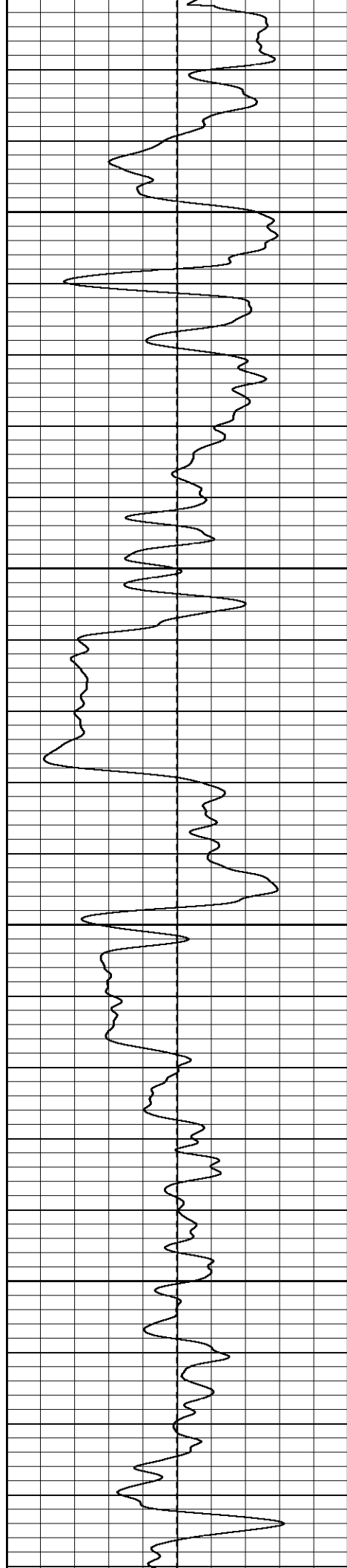
1700

1750

1800

1850



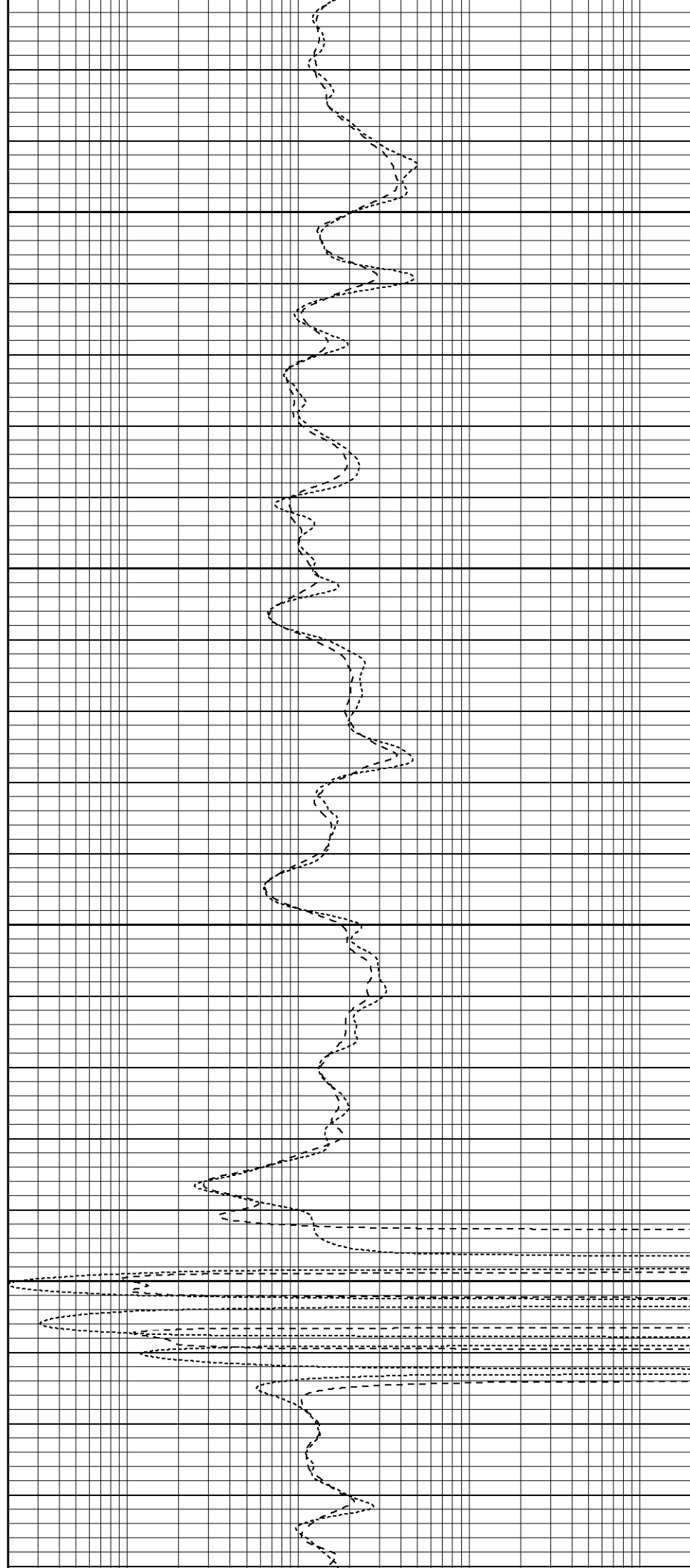


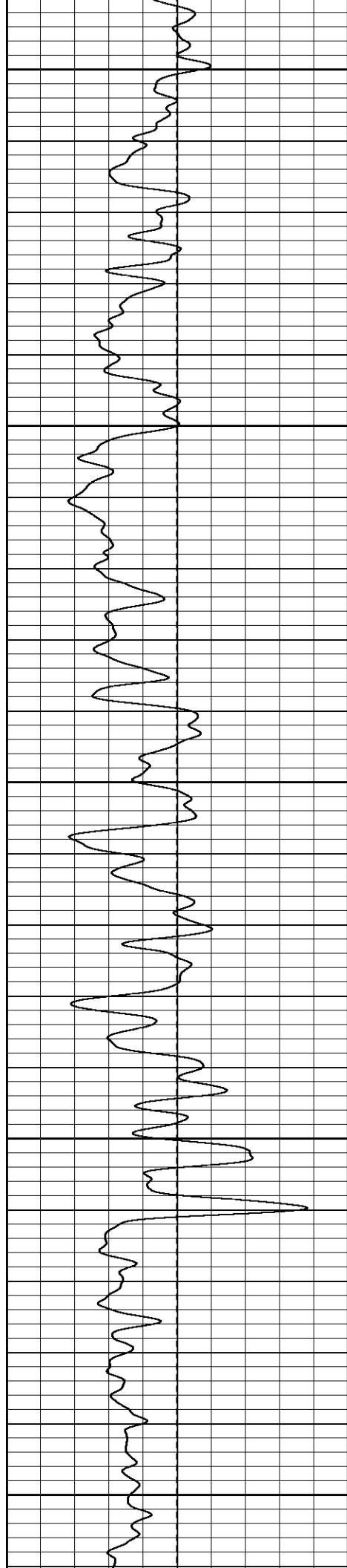
1900

1950

2000

2050





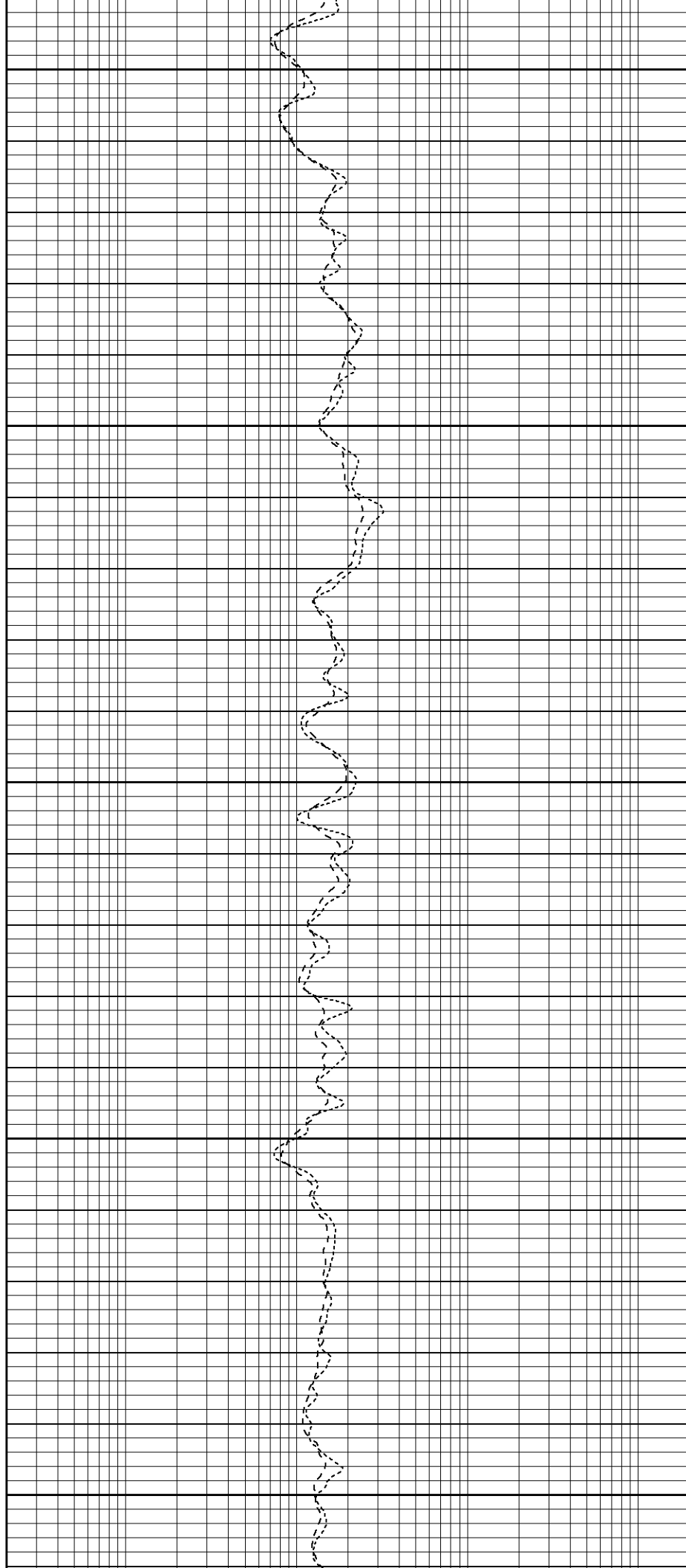
2100

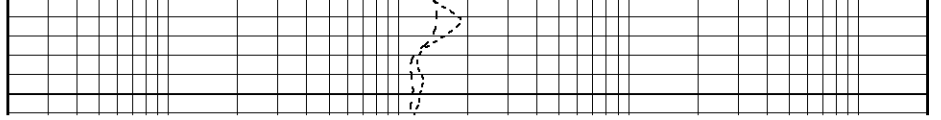
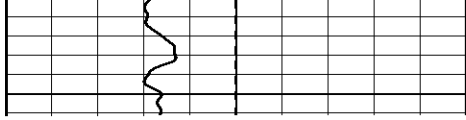
2150

2200

2250

2300

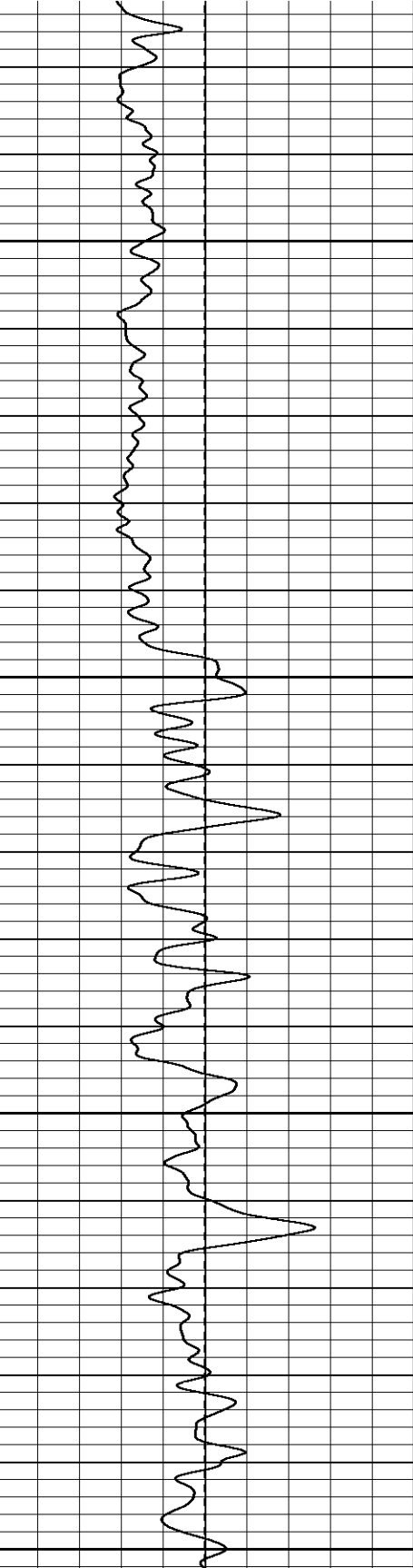




Database File: xtoge2011.db
Dataset Pathname: pass1.1
Presentation Format: dil
Dataset Creation: Sun Sep 24 12:05:23 2006 by Calc Warrior 7.0 STD Ope
Charted by: Depth in Feet scaled 1:240

0 GR (GAPI) 200
-100 SP (mV) 100

0.2 RILM (Ohm-m) 2000
0.2 RILD (Ohm-m) 2000
0.2 RLL3 (Ohm-m) 2000

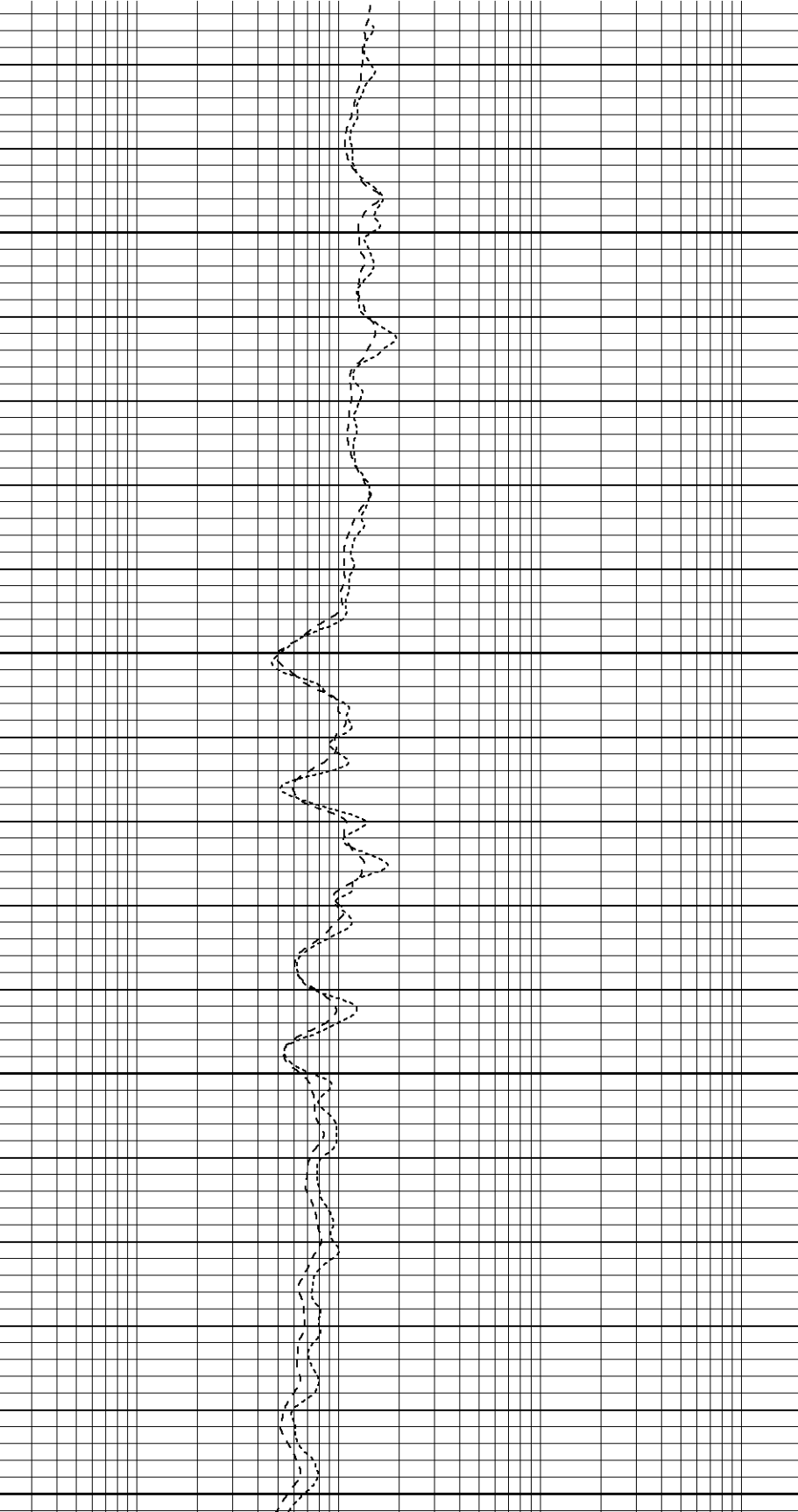


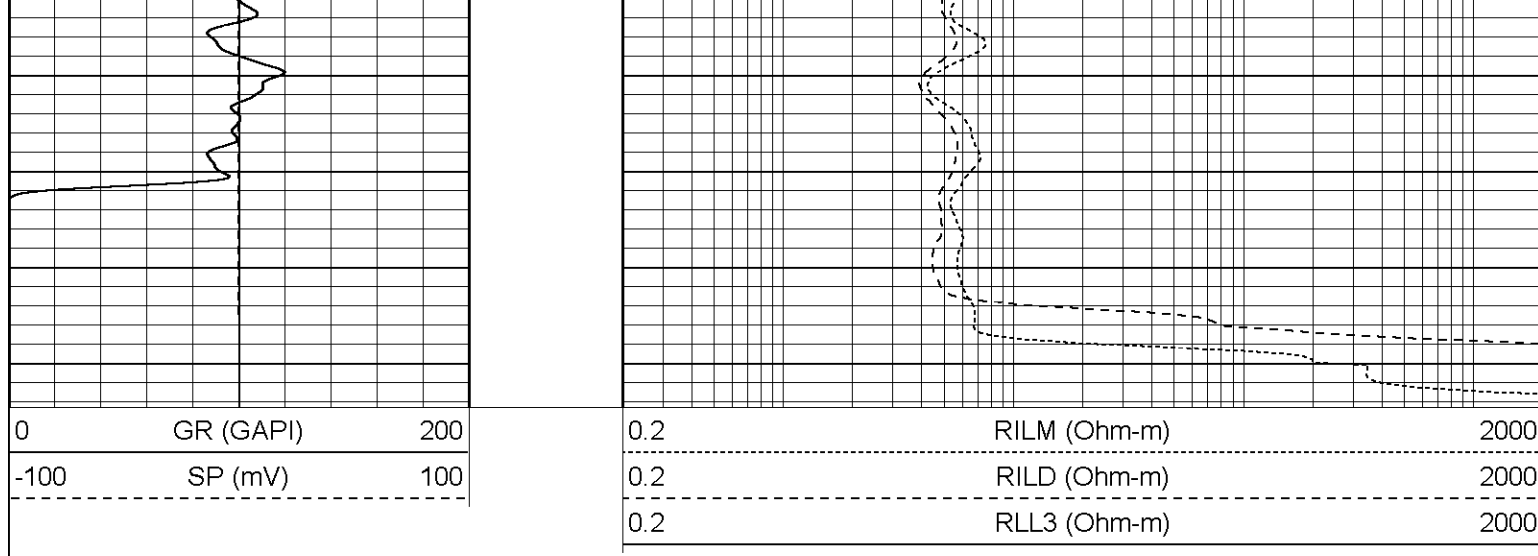
2300

2350

2400

2450





Dual Induction Calibration Report									
Serial-Model:				5375-G					
Surface Cal Performed:				Sat Sep 16 22:49:39 2006					
Downhole Cal Performed:				Sun Sep 24 09:41:39 2006					
Surface Calibration									
Readings				References			Results		
Loop:	Air	Loop		Air	Loop		m	b	
Deep	0.012	0.633	V	0.000	500.000	mmho-m	804.288	-9.342	
Medium	0.016	0.752	V	0.000	550.000	mmho-m	747.433	-11.697	
Internal:	Zero	Cal		Zero	Cal		m	b	
Deep	0.012	0.636	V	0.000	500.000	mmho-m	800.610	-9.578	
Medium	0.016	0.752	V	0.000	550.000	mmho-m	747.389	-12.066	
Downhole Calibration									
Readings				References			Results		
Internal:	Zero	Cal		Zero	Cal		m	b	
Deep	-0.172	503.323	mmho-m	0.280	500.000	mmho-m	0.993	0.450	
Medium	0.748	555.091	mmho-m	0.370	550.000	mmho-m	0.991	-0.372	
Shallow	2.511	0.024	V	500.000	2.000	Ohm-m	145.000	-1.500	

Gamma Ray Calibration Report									
Serial Number:		2001							
Tool Model:		OH							
Performed:		Thu Sep 21 09:41:27 2006							
Calibrator Value:		1.0	GAPI						
Background Reading:		0.0	cps						
Calibrator Reading:		1.0	cps						
Sensitivity:		0.1800	GAPI/cps						

Sensor	Offset (ft)	Schematic	Description	Len (ft)	OD (in)	Wt (lb)
CHD	25.08		None	0.75	1.50	5.00

[illegible]