

Patterson

**SINGLE
INDUCTION
LOG**

Company Pioneer Natural Resources
Well Lorencito 7-30-34-66
Field Purgatoire River
County Las Animas State Colorado

Location: API # : 05 071 08505 00
1832' FNL & 2212' FEL
Permanent Datum SEC 30 TWP 34S RGE 66W
Log Measured From Ground Level Elevation 7282'
Drilling Measured From Kelly Bushing 4' Above G.L.
Other Services
CDL
NEUTRON
Elevation
K.B. 7286'
D.F. -----
G.L. 7282'

Date	8-25-05		
Run Number	One		
Depth Driller	1500'		
Depth Logger	1498'		
Bottom Logged Interval	1496'		
Top Log Interval	Surface		
Casing Driller	8 5/8" @ 254'		
Casing Logger	254'		
Bit Size	7 7/8"		
Type Fluid in Hole	Water		
Density / Viscosity	///		
pH / Fluid Loss	///		
Source of Sample	///		
Rm @ Meas. Temp	///		
Rmf @ Meas. Temp	///		
Rmc @ Meas. Temp	///		
Source of Rmf / Rmc	///		
Rm @ BHT	///		
Time Circulation Stopped	6:30 A.M.		
Time Logger on Bottom	8:30 A.M.		
Maximum Recorded Temperature	N/R		
Equipment Number	T720		
Location	Trinidad		
Recorded By	M. Norton		
Witnessed By	Mr. Dave Martinez		

<<< Fold Here >>>

All interpretations are opinions based on inferences from electrical or other measurements and we cannot and do not guarantee the accuracy or correctness of any interpretation, and we shall not, except in the case of gross or willful negligence on our part, be liable or responsible for any loss, costs, damages, or expenses incurred or sustained by anyone resulting from any interpretation made by any of our officers, agents or employees. These interpretations are also subject to our general terms and conditions set out in our current Price Schedule.

Comments

Well Directions:
Lorencito Canyon Across Bridge, Right Towards XTO, First Right To Location.

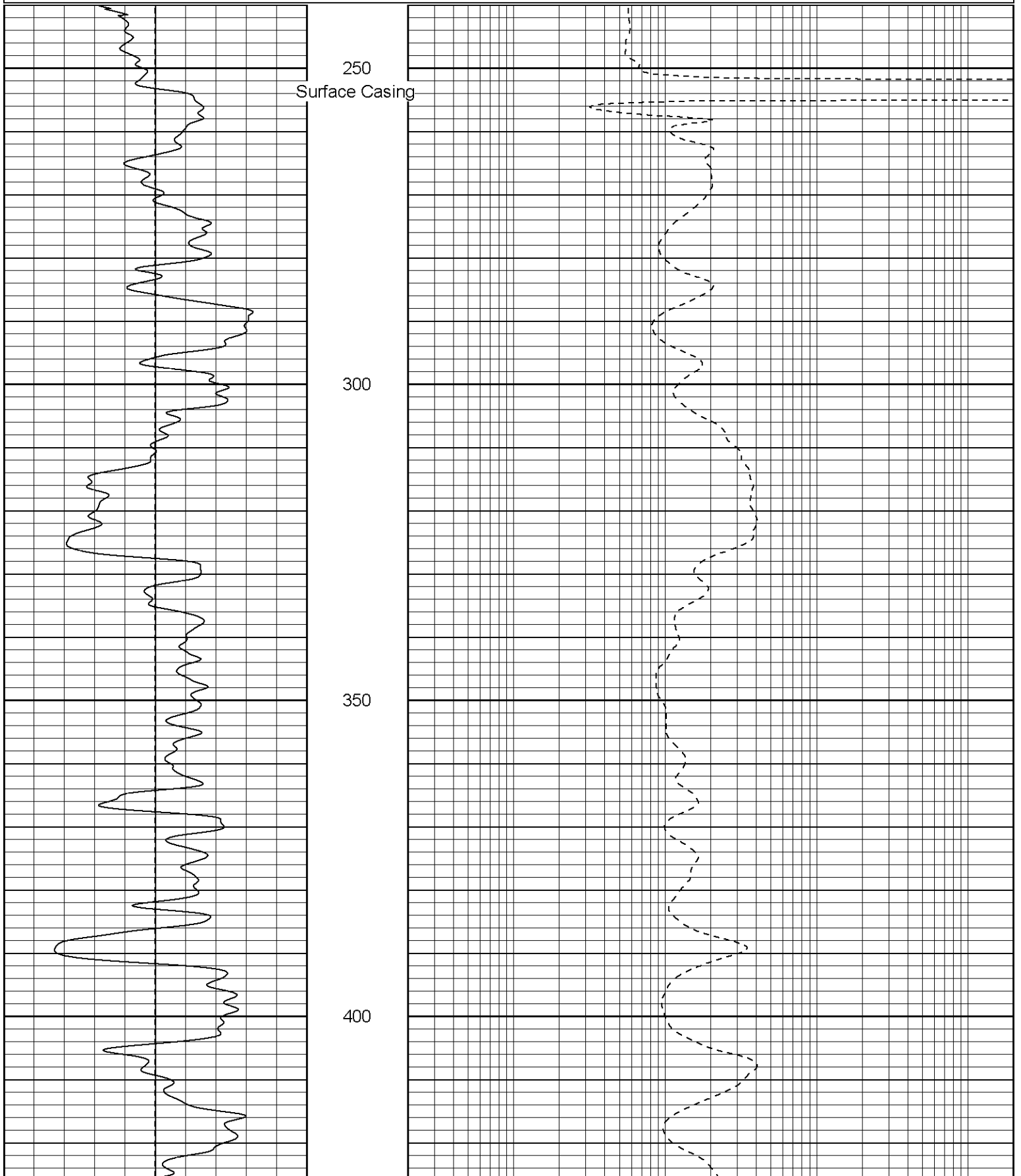
Patterson

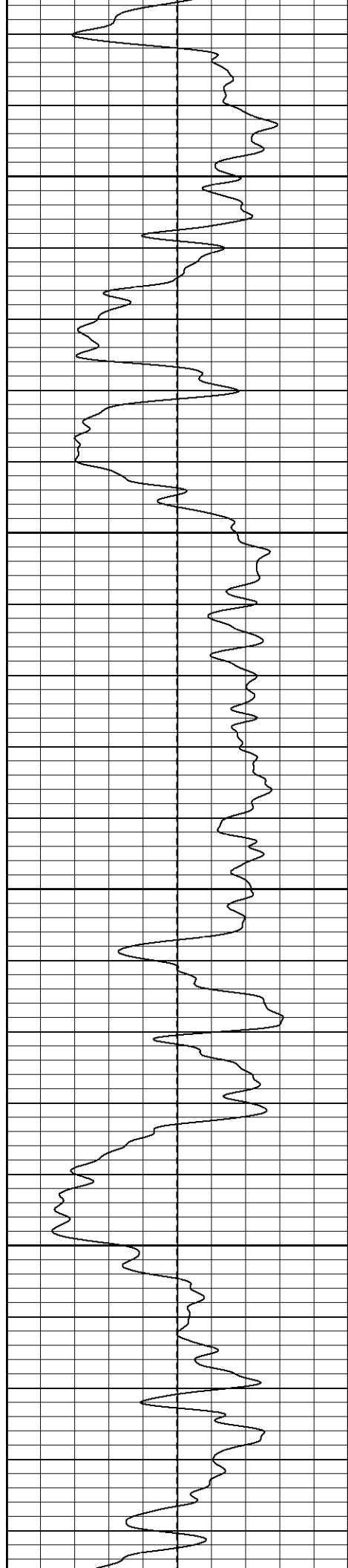
Main Pass

Database File: lorencito7303466.db
Dataset Pathname: pass2.1
Presentation Format: iel
Dataset Creation: Thu Aug 25 10:22:14 2005 by Calc Warrior 7.0 STD Ope
Charted by: Depth in Feet scaled 1:240

0	GR (GAPI)	200
-100	SP (mV)	100

0.2	DIR (Ohm-m)	2000
0.2	SN (Ohm-m)	2000



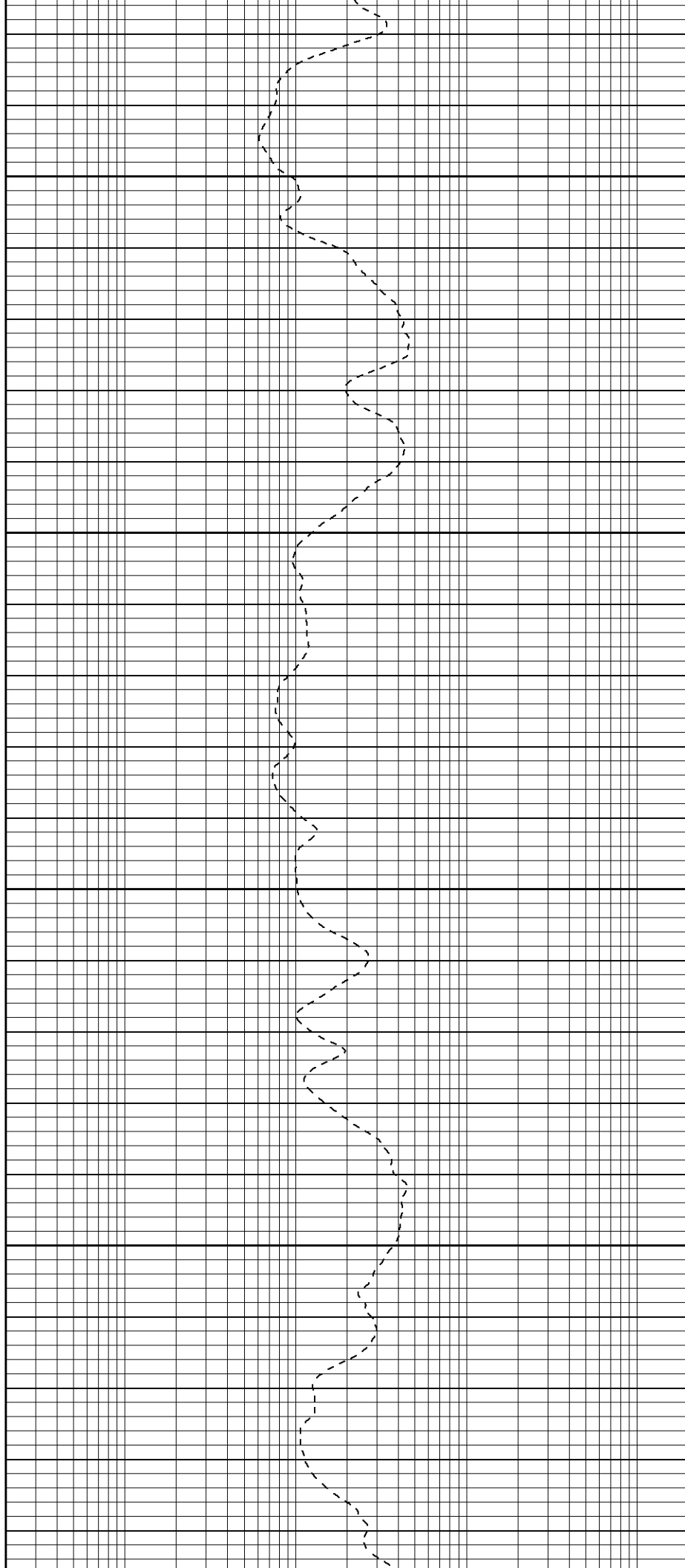


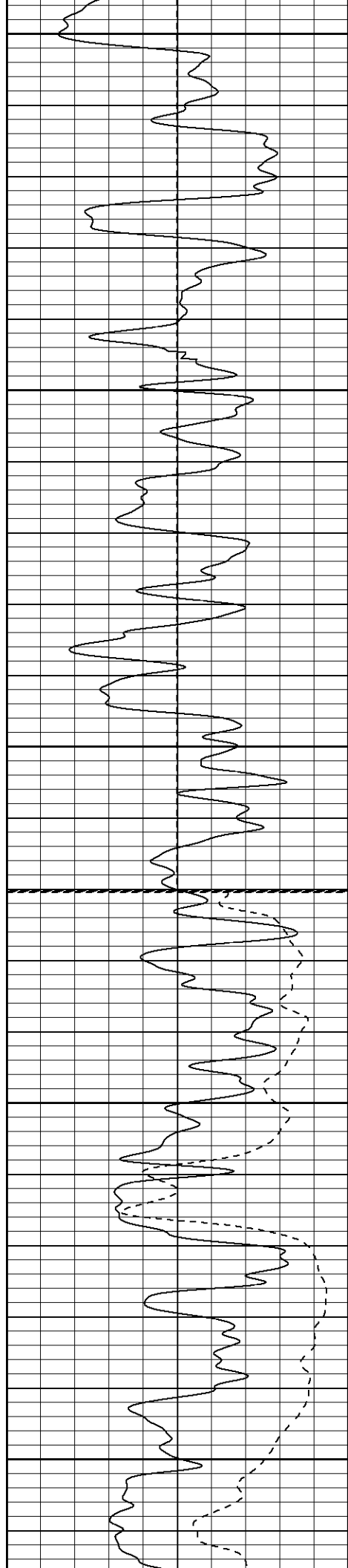
450

500

550

600





650

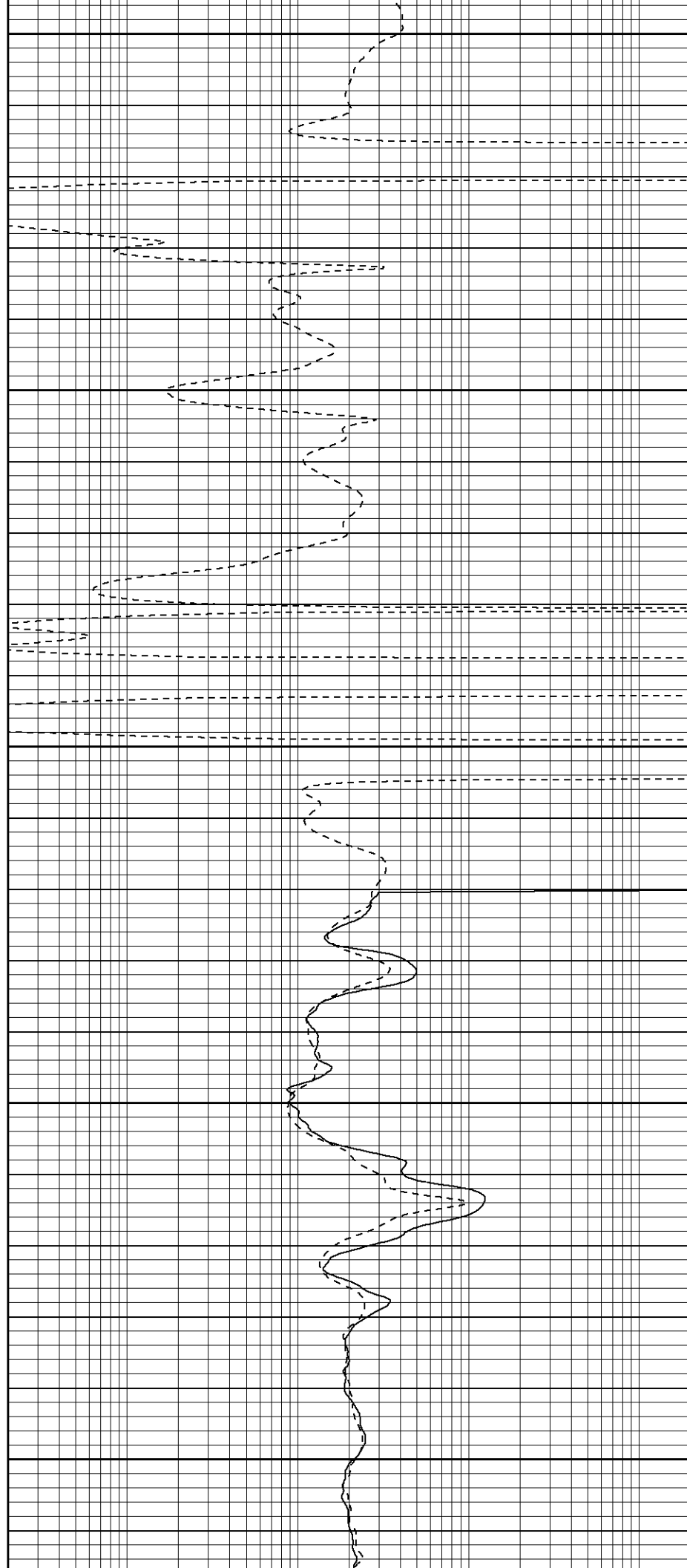
700

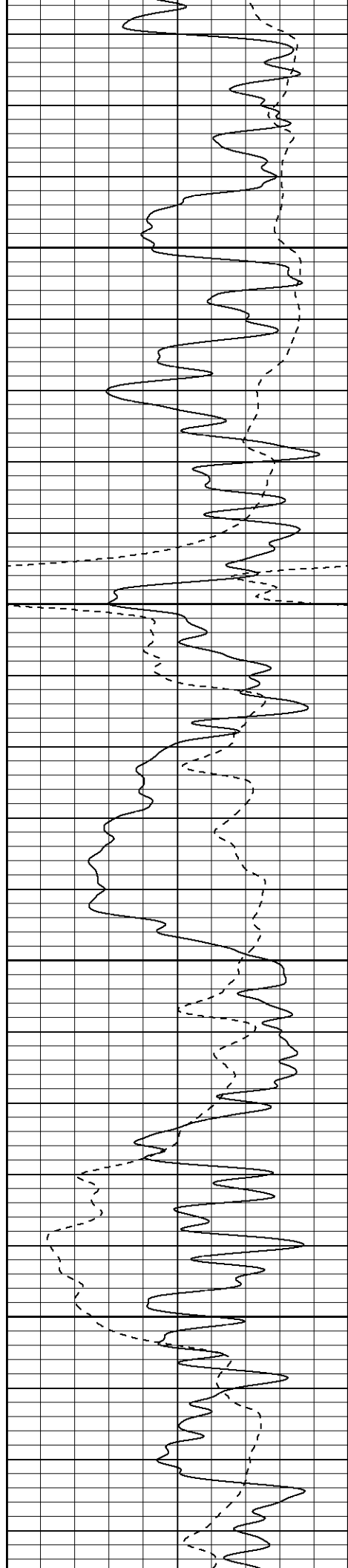
750

800

850

Fluid Level



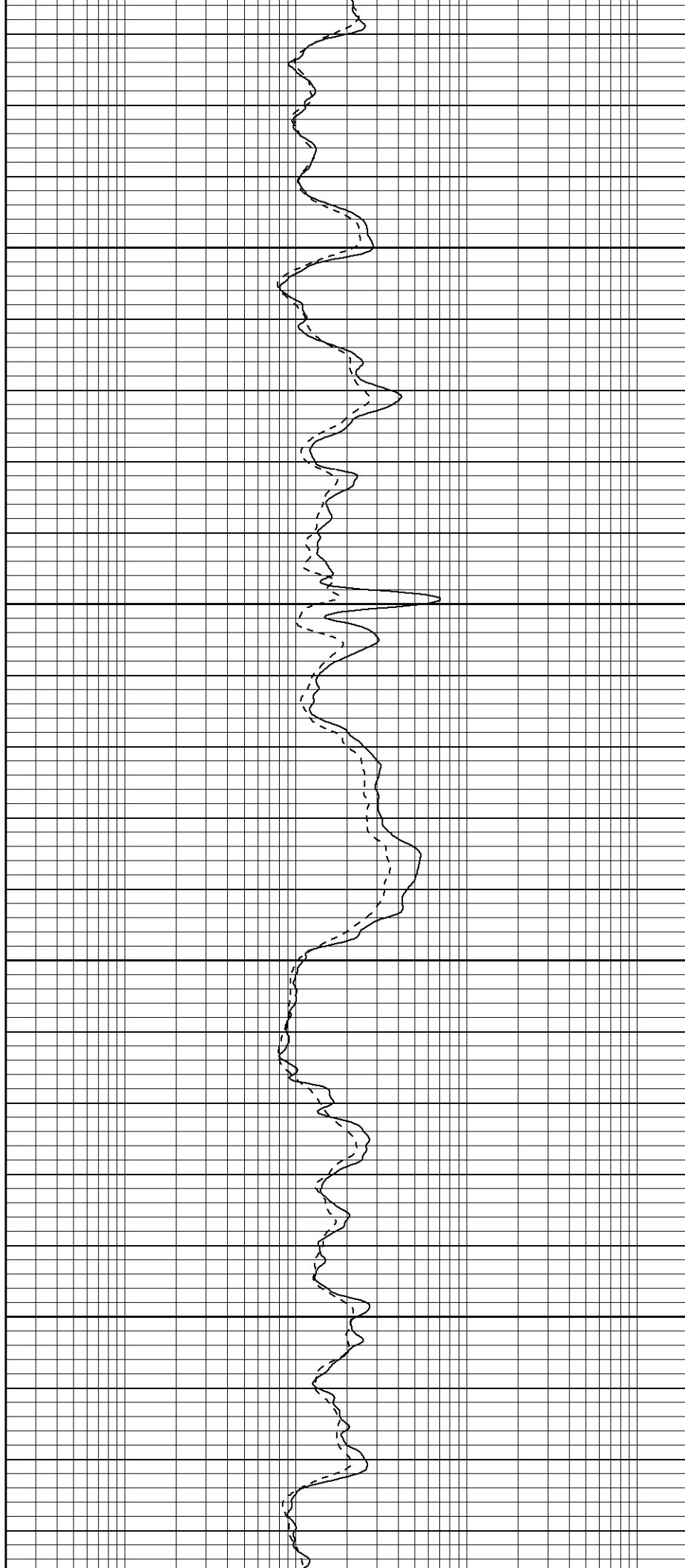


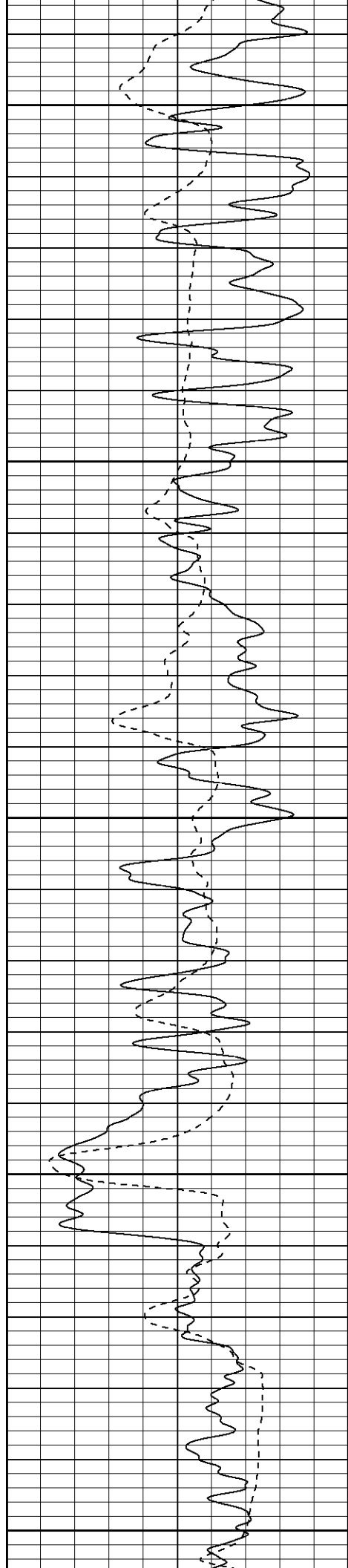
900

950

1000

1050





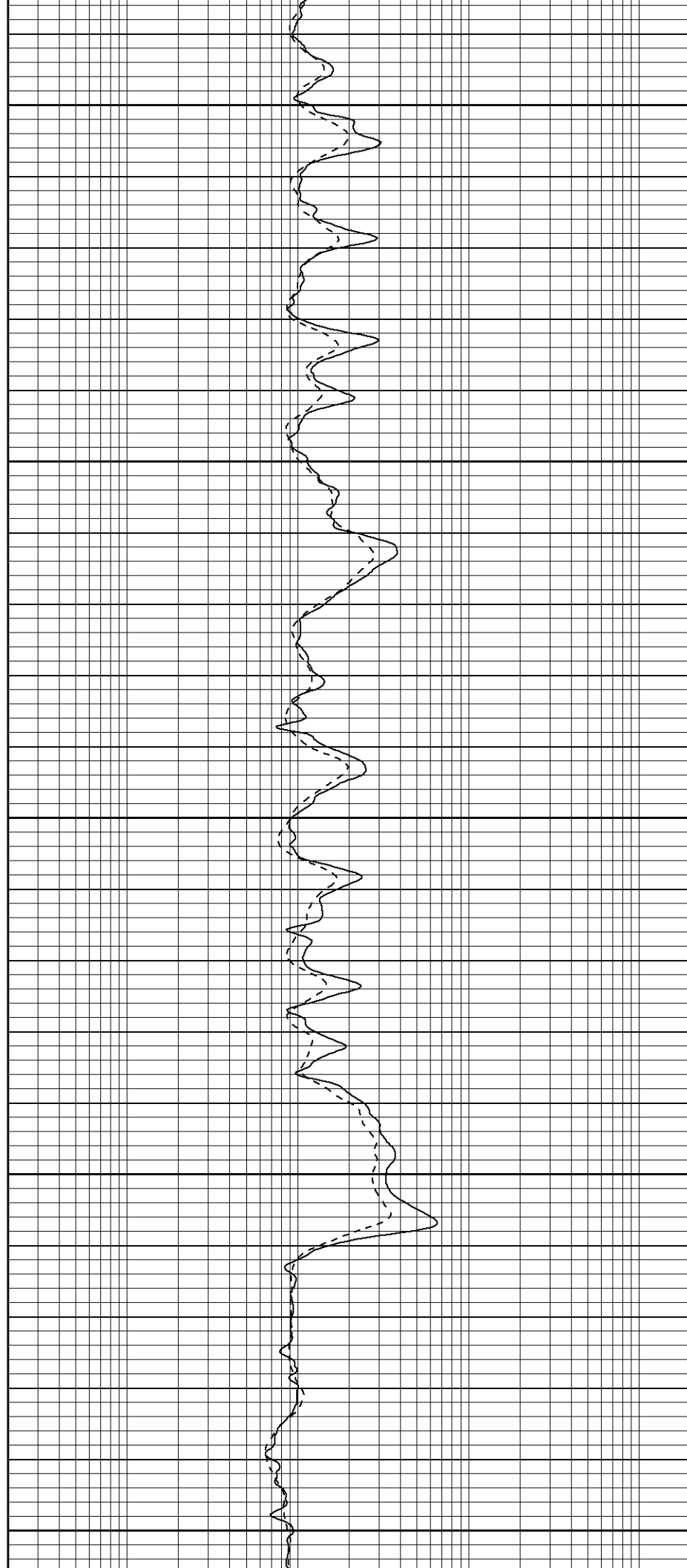
1100

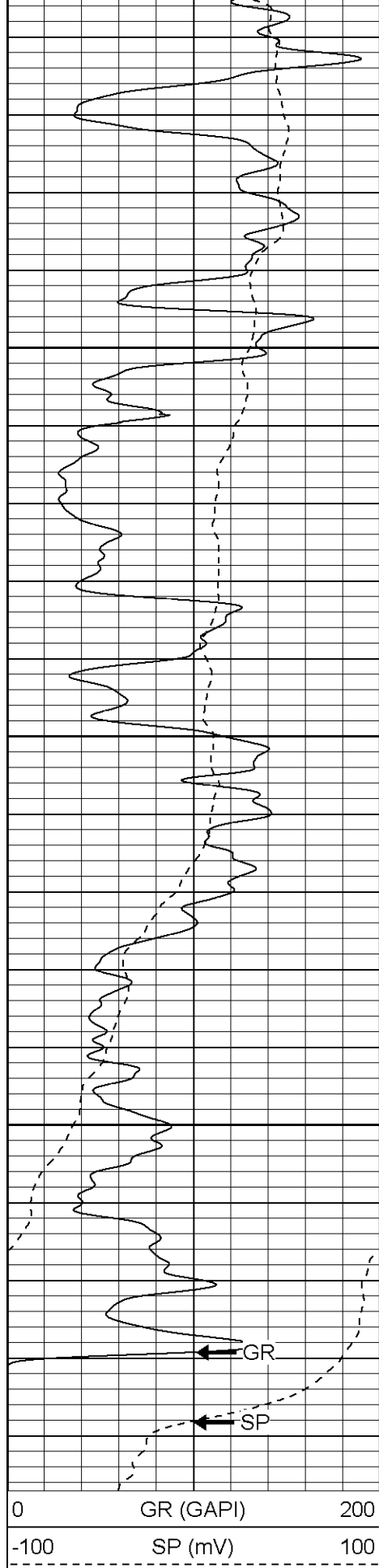
1150

1200

1250

1300

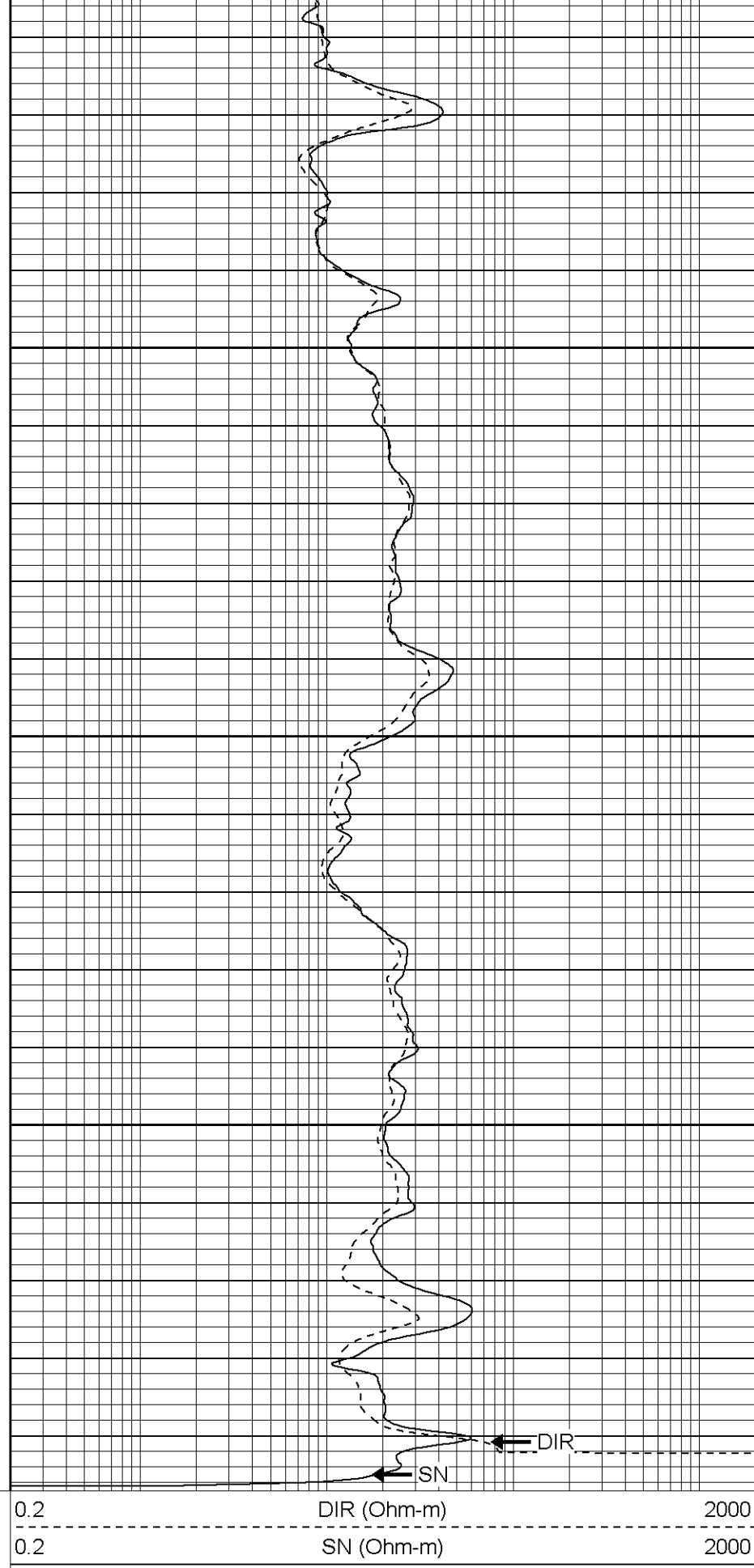




1350

1400

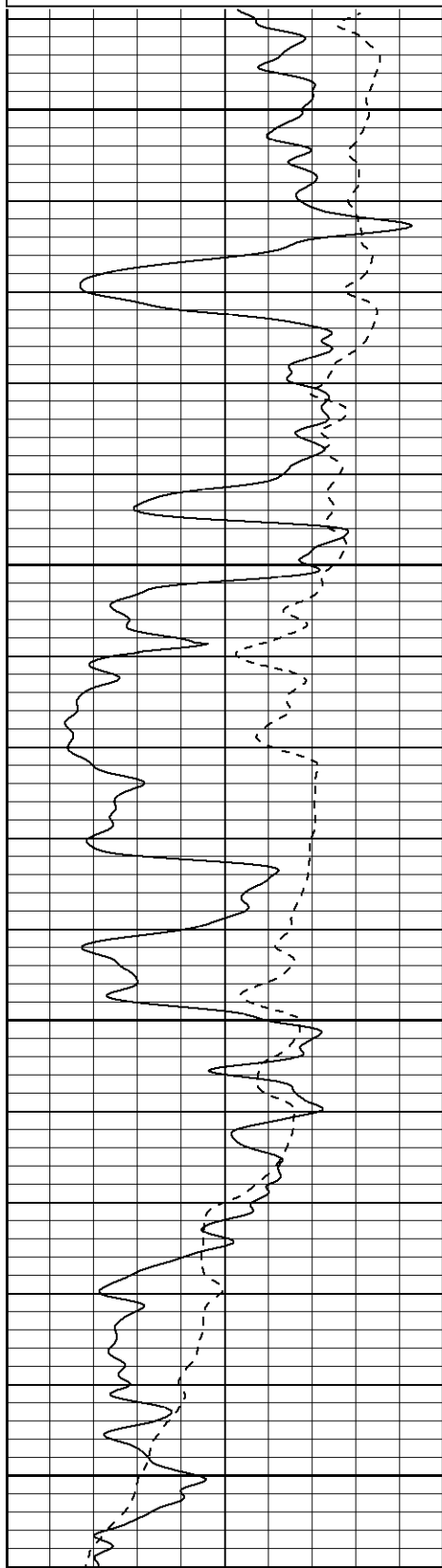
1450



Database File: lorencito7303466.db
 Dataset Pathname: pass1.1
 Presentation Format: iel
 Dataset Creation: Thu Aug 25 10:21:01 2005 by Calc Warrior 7.0 STD Ope
 Charted by: Depth in Feet scaled 1:240

0	GR (GAPI)	200
-100	SP (mV)	100

0.2	DIR (Ohm-m)	2000
0.2	SN (Ohm-m)	2000

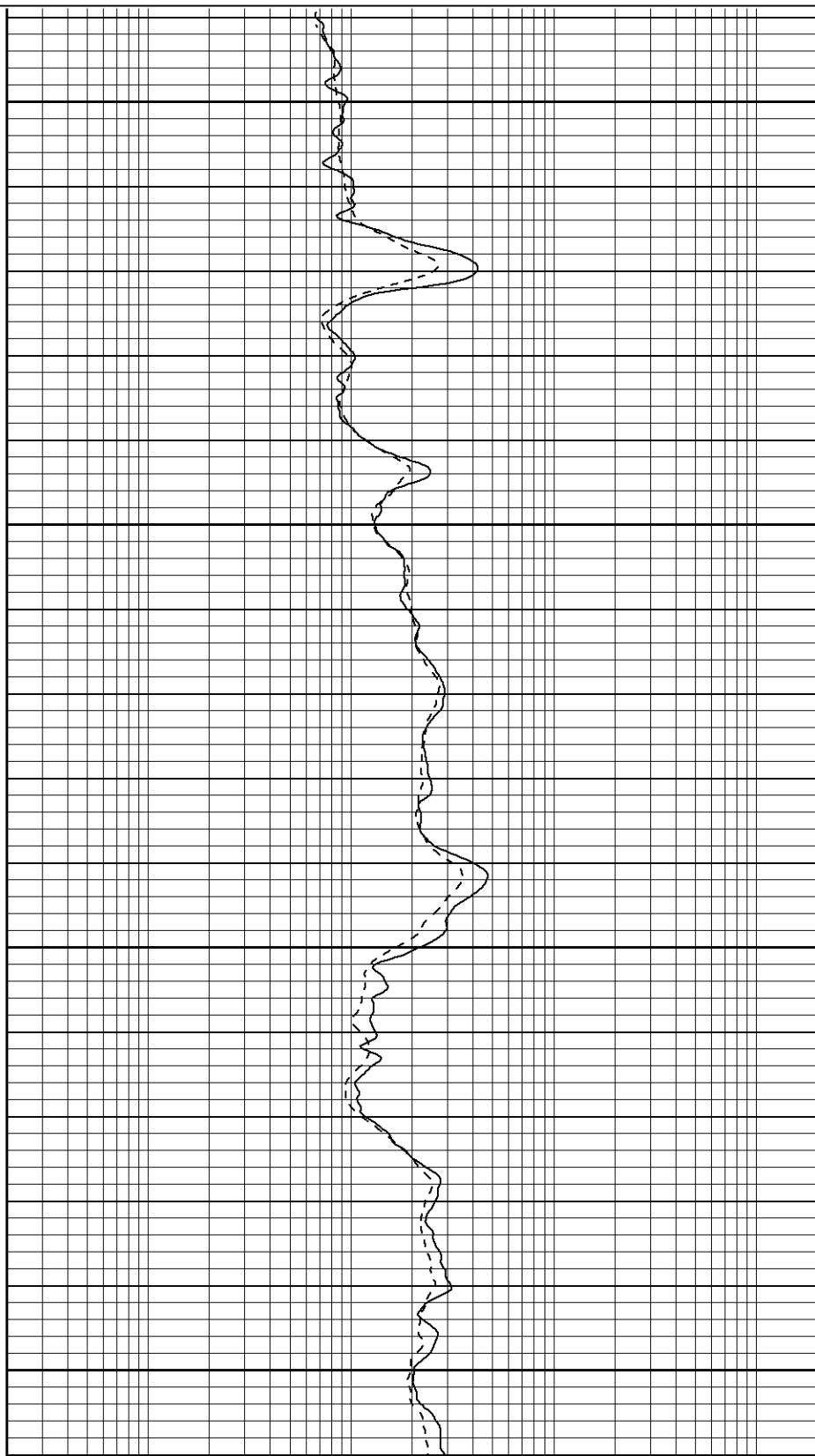


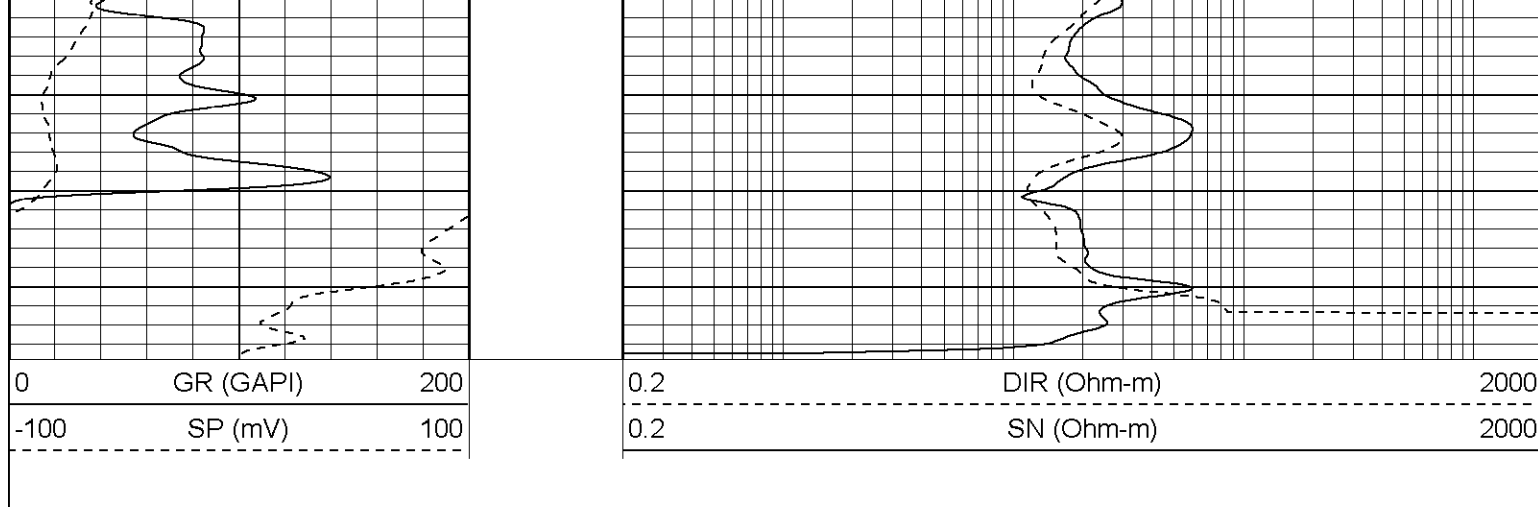
1300

1350

1400

1450





Induction Tool Calibration Report				
Serial Number:		106		
Tool Model:		G		
Downhole Cal Performed:		Fri Jul 08 13:00:01 2005		
Surface Cal Performed:		Wed Jul 06 15:00:32 2005		
Surface Calibration:	Air	Loop		
Conductivity Reference:	0.000	450.000	mmho	
Conductivity Reading:	-0.050	0.634	V	
Internal Reference:	Zero	Cal		
Conductivity Reference:	0.000	500.000	mmho	
Conductivity Reading:	0.002	0.633	V	
Downhole Calibration:	Internal Zero	Internal Cal		
Conductivity Reference:	0.004	449.717	mmho	
Conductivity Reading:	31.783	468.761	V	
Short Normal Reference:	0.000	17.000	Ohm-m	
Short Normal Reading:	0.008	0.213	V	
Results:	Gain	Offset		
Loop Conductivity:	658.156	32.908		
Downhole Correction:	1.029	-32.705		
Short Normal Resistivity:	95.000	-1.500		

Gamma Ray Calibration Report				
Serial Number:		2001		
Tool Model:		OH		
Performed:		Thu Aug 25 08:21:40 2005		
Calibrator Value:	1.0	GAPI		
Background Reading:	0.0	cps		
Calibrator Reading:	1.0	cps		
Sensitivity:	0.2400	GAPI/cps		

Sensor	Offset (ft)	Schematic	Description	Len (ft)	OD (in)	Wt (lb)
CHD	19.50	—	None	0.75	1.50	5.00
GR	17.25	—	GR-OH (2001) SIE	3.50	3.25	40.00

DIC	6.89		15.25	4.00	178.00
SP SN	1.50 1.00				

Dataset: /field/well/run/_plots/_jobs_/sil

Total Length: 19.50 ft

Total Weight: 223.00 lb

O.D. 4.00 in